



Record of Survey - LT 593241

Survey Number LT 593241
Surveyor Reference 13067 King
Surveyor Timothy Brian Ronke
Survey Firm Grant & Cooke Surveyors Ltd
Surveyor Declaration I Timothy Brian Ronke, being a licensed cadastral surveyor, certify that--
 (a) this dataset provided by me and its related survey are accurate, correct and in accordance with the Cadastral Survey Act 2002 and Cadastral Survey Rules 2021; and
 (b) the survey was undertaken by me or under my personal direction.
 Declared on 05 Jun 2024 08:07 AM

Survey Details

Dataset Description Lots 1 and 2 being a subdivision of Part Tokomaru B4A Block and easement over Section 1 SO 437345
Purpose LT Subdivision
Status Approved as to Survey **Type** Survey
Land District Gisborne **Survey Class** Class B
Meridional Circuit Poverty Bay 2000 **Vertical Datum** None

Survey Dates

Surveyed Date 28/06/2023 **Certified Date** 05/06/2024
Submitted Date 05/06/2024 08:07:08 **Survey Approval Date** 07/06/2024
Deposit Date

Referenced Surveys

Survey Number	Land District	Bearing Correction
DP 1380	Gisborne	0°01'00"
SO 7668	Gisborne	0°00'00"
ML 1208	Gisborne	0°01'00"
ML 1477	Gisborne	0°01'00"
SO 6108	Gisborne	0°00'00"
SO 7961	Gisborne	0°00'00"
SO 286	Gisborne	0°01'00"
SO 8562	Gisborne	0°00'00"
DP 9838	Gisborne	0°00'00"
SO 437345	Gisborne	0°00'00"
SO 285	Gisborne	0°01'00"

Territorial Authorities

Gisborne District

Comprised In

RT 957347
 RT 596350



Record of Survey - LT 593241

Created Parcels

Parcels	Parcel Intent	Area	RT Reference
Lot 1 Deposited Plan 593241	Fee Simple Title	13.6787 Ha	
Lot 2 Deposited Plan 593241	Fee Simple Title	29.7282 Ha	
Area A Deposited Plan 593241	Easement		
Area B Deposited Plan 593241	Easement		
Area C Deposited Plan 593241	Easement		
Area D Deposited Plan 593241	Easement		
Area E Deposited Plan 593241	Easement		
Area F Deposited Plan 593241	Easement		
Area G Deposited Plan 593241	Easement		
Area H Deposited Plan 593241	Easement		
Area I Deposited Plan 593241	Easement		
Area J Deposited Plan 593241	Easement		
Area K Deposited Plan 593241	Easement		
Area L Deposited Plan 593241	Easement		
Area M Deposited Plan 593241	Easement		
Area N Deposited Plan 593241	Easement		
Area O Deposited Plan 593241	Easement		
Area P Deposited Plan 593241	Easement		
Total Area		<hr/> 43.4069 Ha	

Mark and Vector

Survey Number DP 593241

Meridional Circuit Poverty Bay 2000

From	To	Code	Bearing	Adpt Surv	Bearing Correction	Distance	Adpt Surv	Class
RS 5 SO 7668	GF 47	ob0	54°35'34"	M		895.79 M		
RS 5 SO 7668	RS 6 SO 7668	ob1	216°18'32"	A SO 7668	0°00'00"	852.54 A	SO 7668	
IT VI SO 8562	IS VIA SO 8562	ob192	214°33'00"	M		69.72 M		
RS 5 SO 7668	IS I SO 8562	ob2	322°46'40"	A SO 8562	0°00'00"	93.13 A	SO 8562	
IS I SO 8562	IS II SO 8562	ob11	261°50'30"	A SO 8562	0°00'00"	65.35 A	SO 8562	
IS II SO 8562	IT III SO 8562	ob12	341°38'00"	A SO 8562	0°00'00"	68.62 A	SO 8562	
IT III SO 8562	IT IV SO 8562	ob13	331°41'20"	A SO 8562	0°00'00"	122.88 A	SO 8562	
IT IV SO 8562	IT V SO 8562	ob14	0°39'20"	A SO 8562	0°00'00"	253.30 A	SO 8562	
RS 5 SO 7668	IT I SO 7961	ob3	268°10'30"	A SO 7961	0°00'00"	260.52 A	SO 7961	
IT I SO 7961	IT II SO 7961	ob16	313°26'40"	A SO 7961	0°00'00"	102.92 A	SO 7961	
IT II SO 7961	IT III SO 7961	ob17	203°34'40"	A SO 7961	0°00'00"	29.75 A	SO 7961	
IT III SO 7961	IT IV SO 7961	ob19	180°40'50"	A SO 7961	0°00'00"	422.18 A	SO 7961	
IT IV SO 7961	RS 6 SO 7668	ob21	206°59'40"	A SO 7961	0°00'00"	336.76 A	SO 7961	
RS 5 SO 7668	IS XCIX SO 6108	ob4	47°09'00"	A SO 7668	0°00'00"	19.76 A	SO 7668	
IS XCIX SO 6108	PEG (45) SO 6108	ob22	195°46'00"	A SO 6108	0°00'00"	12.15 A	SO 6108	
PEG (45) SO 6108	PEG ML 1477	ob23	356°53'00"	A SO 6108	0°00'00"	0.80 A	SO 6108	
PEG ML 1477	PEG (36) SO 563	ob24	350°37'00"	A SO 7961	0°00'00"	21.18 A	SO 7961	
GF 47	IT CXVI SO 6108	ob8	219°14'30"	A SO 7668	0°00'00"	9.64 A	SO 7668	
IT CXVI SO 6108	IT CXV SO 6108	ob15	200°09'10"	A DP 9838	0°00'00"	101.19 A	SO 6108	
IT CXV SO 6108	IT CXIV SO 6108	ob27	210°38'40"	A SO 6108	0°00'00"	52.63 A	SO 6108	
IT CXIV SO 6108	PEG (54) SO 6108	ob28	243°58'00"	A SO 6108	0°00'00"	19.39 A	SO 6108	
PEG (54) SO 6108	PEG (9) SO 6108	ob30	212°16'00"	A SO 6108	0°00'00"	9.03 A	SO 6108	
PEG (9) SO 6108	PEG SO 1208	ob32	218°06'00"	A SO 6108	0°00'00"	4.73 A	SO 6108	
IT CXIV SO 6108	IS CXIII SO 6108	ob29	217°57'00"	A SO 6108	0°00'00"	70.43 A	SO 6108	
IS CXIII SO 6108	IT CXII SO 6108	ob34	215°06'00"	A SO 6108	0°00'00"	60.47 A	SO 6108	
IT CXII SO 6108	IS CXI SO 6108	ob35	220°59'20"	A SO 6108	0°00'00"	65.96 A	SO 6108	
IS CXI SO 6108	IT CVIII SO 6108	ob36	226°11'00"	A SO 6108	0°00'00"	63.61 A	SO 6108	
IT CVIII SO 6108	IT CVI SO 6108	ob37	223°43'50"	A SO 6108	0°00'00"	47.80 A	SO 6108	
IT CVI SO 6108	IS CV SO 6108	ob38	226°05'50"	A SO 6108	0°00'00"	90.87 A	SO 6108	
IS CV SO 6108	IT CIV SO 6108	ob39	269°19'10"	A SO 6108	0°00'00"	88.37 A	SO 6108	
IT CIV SO 6108	IS CIII SO 6108	ob40	278°46'30"	A SO 6108	0°00'00"	56.55 A	SO 6108	
IS CIII SO 6108	IT CI SO 6108	ob41	267°59'30"	A SO 6108	0°00'00"	85.23 A	SO 6108	
IT CI SO 6108	IS C SO 6108	ob42	253°17'10"	A SO 6108	0°00'00"	89.10 A	SO 6108	

Mark and Vector

Survey Number DP 593241

Meridional Circuit Poverty Bay 2000

From	To	Code	Bearing	Adpt Surv	Bearing Correction	Distance	Adpt Surv	Class
IS C SO 6108	IS XCIX SO 6108	ob43	239°01'30"	A SO 6108	0°00'00"	78.46 A	SO 6108	
IT V SO 8562	IS VC SO 8562	ob183	1°51'00"	A SO 8562	0°00'00"	96.36 A	SO 8562	
IS VC SO 8562	UNMK SO 8562	ob48	271°26'30"	C		5.34 C		
IS VC SO 8562	UNMK SO 8562	ob49	91°26'30"	C		5.34 C		
UNMK SO 8562	UNMK SO 8562	ob50	22°02'30"	A SO 8562	0°00'00"	57.34 A	SO 8562	Class B
UNMK SO 8562	UNMK SO 8562	ob52	109°34'00"	A ML 1208	0°01'00"	10.01 A	SO 8562	Class B
UNMK SO 8562	UNMK SO 8562	ob53	202°02'30"	A SO 8562	0°00'00"	54.01 A	SO 8562	Class B
PEG (54) SO 6108	PEG ML 1208	ob31	351°50'00"	A SO 8562	0°00'00"	498.62 A	SO 8562	
PEG ML 1208	PEG ML 1208	ob44	289°34'00"	A ML 1208	0°01'00"	657.82 A	ML 1208	
PEG ML 1208	PEG ML 1208	ob45	305°38'00"	A ML 1208	0°01'00"	147.52 A	ML 1208	
PEG ML 1208	PEG ML 1208	ob46	199°34'00"	A ML 1208	0°01'00"	495.88 A	ML 1208	
PEG ML 1208	PEG ML 1208	ob47	109°34'00"	A ML 1208	0°01'00"	126.39 A	ML 1208	
PEG ML 1208	PEG ML 1208	ob55	109°34'00"	A ML 1208	0°01'00"	20.68 A	ML 1208	
PEG ML 1208	UNMK SO 8562	ob56	109°34'00"	A ML 1208	0°01'00"	15.22 A	SO 8562	Class B
UNMK SO 8562	PEG 1M DP 593241	ob54	109°34'00"	A ML 1208	0°01'00"	11.07 C		Class B
PEG 1M DP 593241	UNMK DP 9838	ob168	109°34'00"	A ML 1208	0°01'00"	1.04 C		Class B
UNMK DP 9838	UNMK DP 9838	ob57	109°34'00"	A ML 1208	0°01'00"	3.00 A	DP 9838	Class B
UNMK DP 9838	PEG SO 1208	ob58	109°34'00"	A SO 8562	0°00'00"	840.61 A	SO 8562	Class B
PEG SO 1208	PEG ML 1477	ob33	218°06'00"	A SO 6108	0°00'00"	86.84 A	SO 6108	Class B
PEG ML 1477	PEG ML 1477	ob115	204°48'00"	A ML 1477	0°01'00"	34.80 A	ML 1477	Class B
PEG ML 1477	PEG (11) SO 6108	ob116	225°57'00"	A SO 6108	0°00'00"	99.14 A	SO 6108	Class B
PEG (11) SO 6108	PEG (50) SO 6108	ob117	222°26'00"	A SO 6108	0°00'00"	21.65 A	SO 6108	Class B
PEG (50) SO 6108	PEG (49) SO 6108	ob118	224°41'30"	A SO 6108	0°00'00"	44.94 A	SO 6108	Class B
PEG (49) SO 6108	PEG (28) SO 6108	ob119	251°48'00"	A SO 6108	0°00'00"	27.42 A	SO 6108	Class B
PEG (28) SO 6108	POST (16) SO 6108	ob120	258°33'00"	A SO 6108	0°00'00"	35.16 A	SO 6108	Class B
POST (16) SO 6108	PEG (33) SO 6108	ob121	247°40'00"	A SO 6108	0°00'00"	20.70 A	SO 6108	Class B
PEG (33) SO 6108	POST (13) SO 6108	ob122	254°47'00"	A SO 6108	0°00'00"	48.08 A	SO 6108	Class B
POST (13) SO 6108	POST (3) SO 6108	ob123	278°10'00"	A SO 6108	0°00'00"	35.10 A	SO 6108	Class B
POST (3) SO 6108	POST (14) SO 6108	ob124	295°02'00"	A SO 6108	0°00'00"	76.48 A	SO 6108	Class B
POST (14) SO 6108	UNMK SO 6108	ob125	274°00'00"	A SO 6108	0°00'00"	10.38 A	SO 6108	Class B
UNMK SO 6108	PEG ML 1477	ob126	297°31'00"	A SO 6108	0°00'00"	11.87 A	SO 6108	Class B
PEG ML 1477	UNMK SO 6108	ob127	232°20'00"	A SO 6108	0°00'00"	15.65 A	SO 6108	Class B

Mark and Vector

Survey Number DP 593241

Meridional Circuit Poverty Bay 2000

From	To	Code	Bearing	Adpt Surv	Bearing Correction	Distance	Adpt Surv	Class
UNMK SO 6108	PEG (30) SO 6108	ob128	244°55'30"	A SO 6108	0°00'00"	17.44	A SO 6108	Class B
PEG (30) SO 6108	PEG (36) SO 563	ob129	238°20'10"	A SO 6108	0°00'00"	193.44	A SO 6108	Class B
IT V SO 8562	IS VA SO 8562	ob184	179°25'00"	A SO 8562	0°00'00"	54.41	A SO 8562	
IS VA SO 8562	UNMK SO 8562	ob64	287°19'15"	C		5.13	C	
IS VA SO 8562	UNMK SO 8562	ob65	107°19'15"	C		5.13	C	
UNMK SO 8562	UNMK 7 DP 593241	ob69	184°16'30"	A SO 8562	0°00'00"	72.07	C	Class B
UNMK DP 9838	UNMK DP 9838	ob70	184°16'30"	A SO 8562	0°00'00"	24.65	A DP 9838	Class B
UNMK DP 9838	UNMK (5) SO 8562	ob72	184°16'30"	A SO 8562	0°00'00"	7.42	A DP 9838	Class B
UNMK (5) SO 8562	UNMK (10) SO 8562	ob74	268°12'00"	A SO 8562	0°00'00"	10.06	A SO 8562	Class B
UNMK (10) SO 8562	UNMK DP 9838	ob75	4°16'30"	A SO 8562	0°00'00"	90.05	A DP 9838	Class B
UNMK DP 9838	UNMK DP 9838	ob77	4°16'30"	A SO 8562	0°00'00"	24.65	A DP 9838	Class B
UNMK DP 9838	UNMK SO 8562	ob79	4°16'30"	A SO 8562	0°00'00"	52.16	C	Class B
PEG (36) SO 563	UNMK 13 DP 593241	ob25	302°55'00"	A DP 1380	0°01'00"	13.50	C	Class B
UNMK (17) SO 8562	PEG VII DP 1380	ob60	302°55'00"	A DP 1380	0°01'00"	1.27	A SO 8562	Class B
PEG VII DP 1380	UNMK (4) SO 8562	ob61	275°48'00"	A DP 1380	0°01'00"	32.26	A SO 8562	Class B
UNMK (4) SO 8562	PEG VI DP 1380	ob62	275°48'00"	A DP 1380	0°01'00"	22.20	A SO 8562	Class B
PEG VI DP 1380	PEG V DP 1380	ob66	357°39'00"	A DP 1380	0°01'00"	91.91	A DP 1380	Class B
PEG V DP 1380	PEG 1A DP 593241	ob67	325°30'00"	A DP 1380	0°01'00"	129.77	A DP 1380	Class B
PEG 1A DP 593241	UNMK (12) DP 9838	ob81	268°12'00"	A DP 1380	0°01'00"	7.40	A DP 9838	Class B
UNMK (12) DP 9838	UNMK (23) DP 9838	ob83	268°12'00"	A DP 1380	0°01'00"	3.00	A DP 9838	Class B
UNMK (23) DP 9838	UNMK (5) SO 8562	ob86	268°12'00"	A DP 1380	0°01'00"	0.94	A DP 9838	Class B
IT II SO 7961	PEG (7) SO 7961	ob18	293°25'00"	A SO 7961	0°00'00"	25.94	A SO 7961	
UNMK (10) SO 8562	PEG III DP 1380	ob76	268°12'00"	A DP 1380	0°01'00"	94.41	A SO 8562	Class B
PEG III DP 1380	PEG II DP 1380	ob88	199°26'00"	A DP 1380	0°01'00"	144.24	A DP 1380	Class B
PEG II DP 1380	UNMK 98 SO 437345	ob89	181°39'00"	A DP 1380	0°01'00"	51.12	A SO 437345	Class B
UNMK 98 SO 437345	UNMK 99 SO 437345	ob90	181°39'00"	A ML 1208	0°01'00"	5.83	A SO 437345	Class B
UNMK 99 SO 437345	PEG (7) SO 7961	ob94	181°39'00"	A DP 1380	0°01'00"	3.68	A SO 437345	Class B
IT III SO 7961	PEG (4) SO 7961	ob20	315°13'00"	A SO 7961	0°00'00"	17.92	A SO 7961	
PEG (7) SO 7961	PEG (4) SO 7961	ob84	181°39'00"	A SO 7961	0°00'00"	24.87	A SO 7961	Class B

Mark and Vector

Survey Number DP 593241

Meridional Circuit Poverty Bay 2000

From	To	Code	Bearing	Adpt Surv	Bearing Correction	Distance	Adpt Surv	Class
PEG (4) SO 7961	UNMK 101 SO 437345	ob85	273°01'00"	A ML 1208	0°01'00"	13.21	A SO 437345	Class B
UNMK 101 SO 437345	UNMK 102 SO 437345	ob91	273°01'00"	A ML 1208	0°01'00"	5.46	A SO 437345	Class B
UNMK 102 SO 437345	PEG ML 1208	ob92	273°01'00"	A ML 1208	0°01'00"	650.94	C	Class C
PEG ML 1208	PEG SO 286	ob96	28°19'00"	A ML 1208	0°01'00"	0.70	A ML 1208	Class C
PEG SO 286	PEG SO 286	ob97	61°26'00"	A SO 286	0°01'00"	24.60	A SO 286	Class C
PEG SO 286	PEG SO 286	ob98	87°25'00"	A SO 286	0°01'00"	107.91	A SO 286	Class C
PEG SO 286	PEG SO 286	ob99	31°28'00"	A SO 286	0°01'00"	61.64	A SO 286	Class C
PEG SO 286	PEG SO 286	ob100	90°07'00"	A SO 286	0°01'00"	48.14	A SO 286	Class C
PEG SO 286	PEG SO 286	ob101	48°19'00"	A SO 286	0°01'00"	62.62	A SO 286	Class C
PEG SO 286	PEG SO 286	ob102	106°31'00"	A SO 286	0°01'00"	32.15	A SO 286	Class C
PEG SO 286	PEG SO 286	ob103	152°29'00"	A SO 286	0°01'00"	49.19	A SO 286	Class C
PEG SO 286	PEG SO 286	ob104	135°08'00"	A SO 286	0°01'00"	56.67	A SO 286	Class C
PEG SO 286	PEG SO 285	ob105	91°39'00"	A SO 286	0°01'00"	60.43	A SO 286	Class C
PEG SO 285	PEG SO 285	ob106	38°14'00"	A SO 285	0°01'00"	171.84	A SO 285	Class C
PEG SO 285	PEG SO 285	ob107	59°36'00"	A SO 285	0°01'00"	73.65	A SO 285	Class C
PEG SO 285	PEG SO 285	ob108	36°47'00"	A SO 285	0°01'00"	62.60	A SO 285	Class C
PEG SO 285	PEG SO 285	ob109	336°23'00"	A SO 285	0°01'00"	129.15	A SO 285	Class C
PEG SO 285	PEG SO 285	ob110	54°50'00"	A SO 285	0°01'00"	71.52	A SO 285	Class C
PEG SO 285	PEG SO 285	ob111	109°25'00"	A SO 285	0°01'00"	57.69	A SO 285	Class C
PEG SO 285	PEG SO 285	ob112	18°50'00"	A SO 285	0°01'00"	81.71	A SO 285	Class C
PEG SO 285	PEG SO 285	ob113	83°21'00"	A SO 285	0°01'00"	71.37	A SO 285	Class C
PEG SO 285	PEG SO 285	ob114	34°47'00"	A SO 285	0°01'00"	99.64	A SO 285	Class C
PEG SO 285	PEG ML 1208	ob143	6°05'00"	A SO 285	0°01'00"	13.58	A ML 1208	Class B
IT V SO 8562	DISK 1G DP 593241	ob185	160°46'00"	M		47.28	M	
IT V SO 8562	POST 1H DP 593241	ob186	86°25'00"	M		38.03	M	
IT V SO 8562	POST 1I DP 593241	ob187	76°57'00"	M		39.71	M	
IT V SO 8562	POST 1J DP 593241	ob188	47°14'00"	M		46.57	M	
IT V SO 8562	DISK 1K DP 593241	ob189	10°19'20"	M		76.56	M	
IT V SO 8562	PEG 1L DP 593241	ob190	7°10'20"	M		78.30	M	
IT VI SO 8562	PEG 1M DP 593241	ob193	201°30'40"	M		103.25	M	
RS 5 SO 7668	PEG 66 SO 437345	ob5	312°46'00"	A SO 437345	0°00'00"	43.56	A SO 437345	
PEG (36) SO 563	UNMK 14 DP 593241	ob26	278°47'00"	A SO 6108	0°00'00"	11.50	C	Class B

Mark and Vector

Survey Number DP 593241

Meridional Circuit Poverty Bay 2000

From	To	Code	Bearing	Adpt Surv	Bearing Correction	Distance	Adpt Surv	Class
DISK 1D DP 593241	DISK 1E DP 593241	ob142	308°34'00"	C		3.91 C		Class B
DISK 1E DP 593241	POST 1F DP 593241	ob132	14°24'00"	C		48.70 C		Class B
POST 1F DP 593241	DISK 1G DP 593241	ob133	356°59'00"	C		21.94 C		Class B
POST 1C DP 593241	UNMK 7 DP 593241	ob131	33°07'00"	C		2.86 C		Class B
UNMK 7 DP 593241	DISK 1D DP 593241	ob162	33°07'00"	C		13.91 C		Class B
DISK 1G DP 593241	UNMK 9 DP 593241	ob134	25°27'20"	C		35.30 C		Class B
UNMK 9 DP 593241	POST 1H DP 593241	ob140	25°27'20"	C		16.77 C		Class B
POST 1H DP 593241	POST 1I DP 593241	ob135	6°19'00"	C		6.63 C		Class B
POST 1I DP 593241	UNMK 10 DP 593241	ob136	348°46'00"	C		0.41 C		Class B
UNMK 10 DP 593241	POST 1J DP 593241	ob144	348°46'00"	C		22.69 C		Class B
POST 1J DP 593241	UNMK 3 DP 593241	ob137	334°54'00"	C		30.23 C		Class B
UNMK 3 DP 593241	UNMK 4 DP 593241	ob146	334°54'00"	C		13.54 C		Class B
UNMK 4 DP 593241	UNMK 5 DP 593241	ob148	334°54'00"	C		4.14 C		Class B
UNMK 5 DP 593241	DISK 1K DP 593241	ob150	334°54'00"	C		0.35 C		Class B
DISK 1K DP 593241	PEG 1L DP 593241	ob138	300°58'00"	C		4.60 C		Class B
PEG 1L DP 593241	UNMK 6 DP 593241	ob139	24°22'20"	C		6.99 C		Class B
UNMK 6 DP 593241	PEG 1M DP 593241	ob152	24°22'20"	C		64.20 C		Class B
UNMK SO 8562	UNMK 6 DP 593241	ob51	160°50'30"	A	SO 8562	0°00'00"	12.83 C	Class B
UNMK 6 DP 593241	UNMK DP 9838	ob153	160°50'30"	A	SO 8562	0°00'00"	6.80 C	Class B
UNMK DP 9838	UNMK DP 9838	ob169	160°50'30"	A	SO 8562	0°00'00"	4.62 A DP 9838	Class B
UNMK DP 9838	UNMK 3 DP 593241	ob171	160°50'30"	A	SO 8562	0°00'00"	15.12 C	Class B
UNMK 3 DP 593241	UNMK 10 DP 593241	ob147	160°50'30"	A	DP 8562	0°00'00"	52.53 C	Class B
UNMK 10 DP 593241	UNMK SO 8562	ob145	160°50'30"	A	SO 8562	0°00'00"	5.80 C	Class B
UNMK SO 8562	UNMK 9 DP 593241	ob154	210°22'00"	A	SO 8562	0°00'00"	19.31 C	Class B

Mark and Vector

Survey Number DP 593241

Meridional Circuit Poverty Bay 2000

From	To	Code	Bearing	Adpt Surv	Bearing Correction	Distance	Adpt Surv	Class
UNMK 9 DP 593241	UNMK SO 8562	ob141	210°22'00"	A SO 8562	0°00'00"	50.03 C		Class B
UNMK SO 8562	UNMK SO 8562	ob68	30°22'00"	A SO 8562	0°00'00"	67.04 A	SO 8562	Class B
UNMK SO 8562	UNMK DP 9838	ob155	340°50'30"	A SO 8562	0°00'00"	57.13 A	DP 9838	Class B
UNMK DP 9838	UNMK DP 9838	ob156	340°50'30"	A SO 8562	0°00'00"	4.62 A	DP 9838	Class B
UNMK DP 9838	UNMK SO 8562	ob158	340°50'30"	A SO 8562	0°00'00"	35.09 A	DP 9838	Class B
UNMK DP 9838	UNMK DP 9838	ob59	201°21'20"	A DP 9838	0°00'00"	72.91 A	DP 9838	Class B
UNMK DP 9838	UNMK 4 DP 593241	ob172	201°21'20"	A DP 9838	0°00'00"	2.16 C		Class B
UNMK 4 DP 593241	UNMK DP 9838	ob149	201°21'20"	A DP 9838	0°00'00"	13.23 C		Class B
UNMK DP 9838	UNMK DP 9838	ob157	201°21'20"	A DP 9838	0°00'00"	65.65 A	DP 9838	Class B
UNMK DP 9838	UNMK DP 9838	ob160	177°17'00"	A DP 9838	0°00'00"	102.80 A	DP 9838	Class B
UNMK DP 9838	UNMK DP 9838	ob80	177°17'00"	A DP 9838	0°00'00"	82.17 A	DP 9838	Class B
UNMK DP 9838	UNMK (12) DP 9838	ob71	177°17'00"	A DP 9838	0°00'00"	31.90 A	DP 9838	Class B
UNMK (23) DP 9838	UNMK DP 9838	ob87	357°17'00"	A DP 9838	0°00'00"	7.38 A	DP 9838	Class B
UNMK DP 9838	UNMK DP 9838	ob73	357°17'00"	A DP 9838	0°00'00"	82.17 A	DP 9838	Class B
UNMK DP 9838	UNMK DP 9838	ob78	357°17'00"	A DP 9838	0°00'00"	127.91 A	DP 9838	Class B
UNMK DP 9838	UNMK DP 9838	ob161	21°21'20"	A DP 9838	0°00'00"	69.80 A	DP 9838	Class B
UNMK DP 9838	UNMK 5 DP 593241	ob159	21°21'20"	A DP 9838	0°00'00"	12.57 C		Class B
UNMK 5 DP 593241	UNMK DP 9838	ob151	21°21'20"	A DP 9838	0°00'00"	2.82 C		Class B
UNMK DP 9838	UNMK DP 9838	ob170	21°21'20"	A DP 9838	0°00'00"	69.31 A	DP 9838	Class B
UNMK 99 SO 437345	UNMK 101 SO 437345	ob95	206°43'00"	A SO 437345	0°00'00"	31.17 A	SO 437345	Class B
UNMK 102 SO 437345	UNMK 100 SO 437345	ob93	26°43'00"	A SO 437345	0°00'00"	37.41 A	SO 437345	Class B
UNMK 100 SO 437345	UNMK 98 SO 437345	ob167	90°45'00"	A SO 437345	0°00'00"	2.81 A	SO 437345	Class B
UNMK (4) SO 8562	UNMK (5) SO 8562	ob63	85°50'00"	A SO 8562	0°00'00"	31.34 A	SO 8562	Class B
UNMK (5) SO 8562	UNMK (17) SO 8562	ob166	163°01'00"	A SO 8562	0°00'00"	6.53 A	SO 8562	Class B
UNMK 13 DP 593241	UNMK (17) SO 8562	ob173	302°55'00"	A DP 1380	0°01'00"	68.27 C		Class B
UNMK 14 DP 593241	PEG 66 SO 437345	ob174	278°47'00"	A SO 6108	0°00'00"	28.53 C		
UNMK 14 DP 593241	UNMK 13 DP 593241	ob175	0°20'00"	C		5.58 C		Class B
RS 5 SO 7668	IT 2 DP 593241	ob6	332°46'00"	M		477.96 M		
IT 2 DP 593241	IT V SO 8562	ob176	17°19'00"	M		69.65 M		
IT V SO 8562	IT VI SO 8562	ob191	17°53'20"	M		250.72 M		
IT VI SO 8562	GF 47	ob194	103°55'35"	M		876.88 M		

Mark and Vector

Survey Number DP 593241

Meridional Circuit Poverty Bay 2000

From	To	Code	Bearing	Adpt Surv	Bearing Correction	Distance	Adpt Surv	Class
RS 5 SO 7668	IT 1 DP 593241	ob7	320°35'10" M			310.69 M		
IT 1 DP 593241	IT 2 DP 593241	ob10	353°23'00" M			186.19 M		
IT 2 DP 593241	POST 1F DP 593241	ob177	90°05'00" M			37.46 M		
IT 2 DP 593241	DISK 1E DP 593241	ob179	151°46'20" M			53.60 M		
IT 2 DP 593241	DISK 1D DP 593241	ob180	150°14'00" M			57.21 M		
IT 2 DP 593241	POST 1C DP 593241	ob181	163°11'20" M			66.55 M		
IT 2 DP 593241	POST 1B DP 593241	ob178	172°02'20" M			139.06 M		
IT 2 DP 593241	PEG 1A DP 593241	ob182	170°32'40" M			154.20 M		
PEG 1A DP 593241	POST 1B DP 593241	ob82	337°08'00" C			15.62 C		Class B
POST 1B DP 593241	UNMK 8 DP 593241	ob130	359°59'20" C			55.54 C		Class B
UNMK 8 DP 593241	POST 1C DP 593241	ob164	359°59'20" C			18.47 C		Class B
UNMK 7 DP 593241	UNMK 8 DP 593241	ob163	184°16'30" C			20.92 C		Class B
UNMK 8 DP 593241	UNMK DP 9838	ob165	184°16'30" C			38.41 C		Class B
IT 1 DP 593241	IT IV SO 8562	ob9	243°09'00" C			4.08 C		

Mark Name	Mark Condition	Description
IT 1 DP 593241		Formerly IT IV SO 8562 Disturbed
PEG 1A DP 593241		Reinstates Peg IV DP 1380

*** End of Report ***

LT 593241 Schedule/Memorandum

Land registration district
Gisborne

Territorial authority
Gisborne District

Memorandum of Easements

Parcels shown with a prefix of *HL*- include height-limited boundaries

PURPOSE	SHOWN	BURDENED LAND	BENEFITED LAND
Right of Way	P	Section 1 SO 437345	Lot 2

Schedule of Existing Easements in Gross

PURPOSE	SHOWN	BURDENED LAND	CREATING DOCUMENT
Right of Way	B, C, D, E, F	Lot 1	187222.1
" "	A, G, H, I, J, K	Lot 2	187222.1
" "	B, C, D, E, F	Lot 1	226751.1
" "	A, G, H, I, J, K	Lot 2	226751.1
" "	B, C, D, E, F	Lot 1	5218568.2
" "	A, G, H, I, J, K	Lot 2	5218568.2
Right to Transmit and Convey Electricity and Telecommunications	O	Lot 1	9662877.1
Right to convey electricity	C, E, L, M	Lot 1	5218568.2
" "	J, N	Lot 2	5218568.2

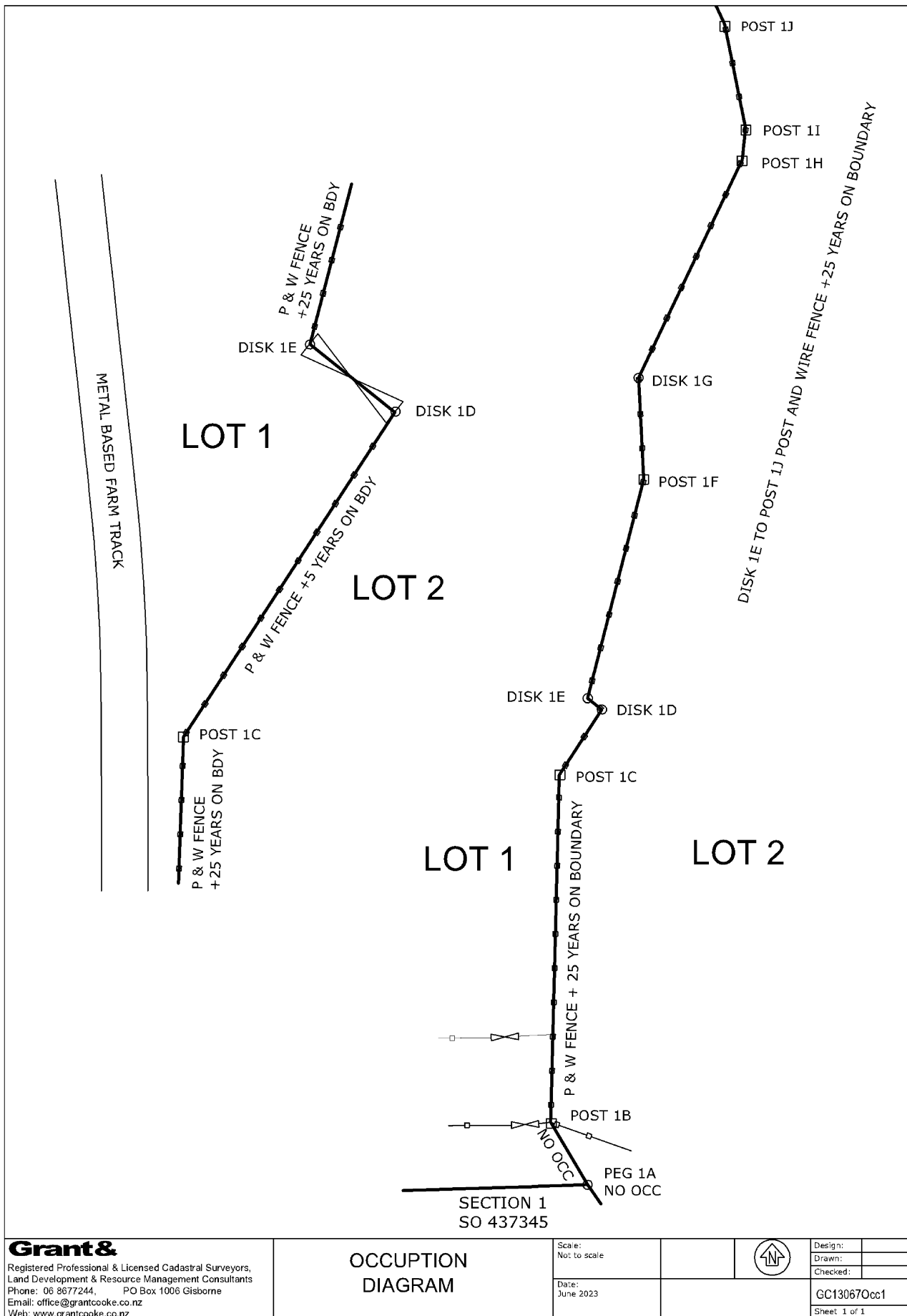
Schedule of Existing Easements

PURPOSE	SHOWN	BURDENED LAND	CREATING DOCUMENT
Right of Way	A	Lot 2	220528.14

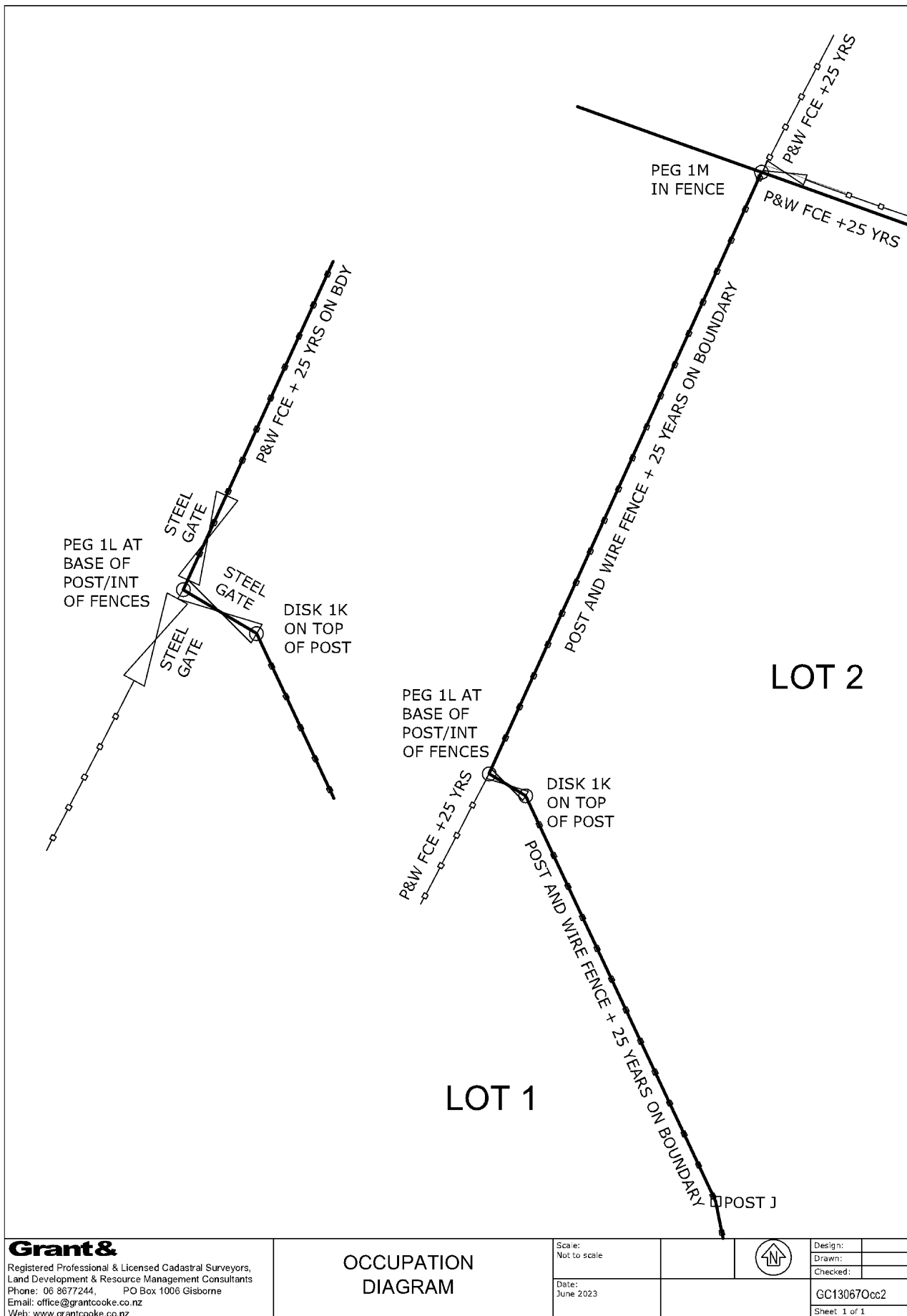
Amalgamation Conditions

That Lot 1 hereon be held with Lot 6 DP 9156 and Lot 4, 6, 9 DP 8873 and Tokomaru B3 Block and Tokomaru C Block and Tokomaru F Block and Part Tokomaru B4A Block and Part Tokomaru D Block and Part Tokomaru D Block and Part Tokomaru E Block and Part Tokomaru E Block and Part Tokomaru E Block and Lot 3 DP 2486 and Lot 6 DP 2485 and Part Lot 10-11 DP 2485 and Part Lot 2 DP 3070 and Section 7 SO 43734 and Part Lot 5 DP 2485 and one record of title be issued to include all parcels.⁸ (LINZ ref: 1890201)

Occupation Diagram



Occupation Diagram



Grant &

Registered Professional & Licensed Cadastral Surveyors,
 Land Development & Resource Management Consultants
 Phone: 06 8677244, PO Box 1006 Gisborne
 Email: office@grantcooke.co.nz
 Web: www.grantcooke.co.nz

OCCUPATION DIAGRAM

Scale:
 Not to scale

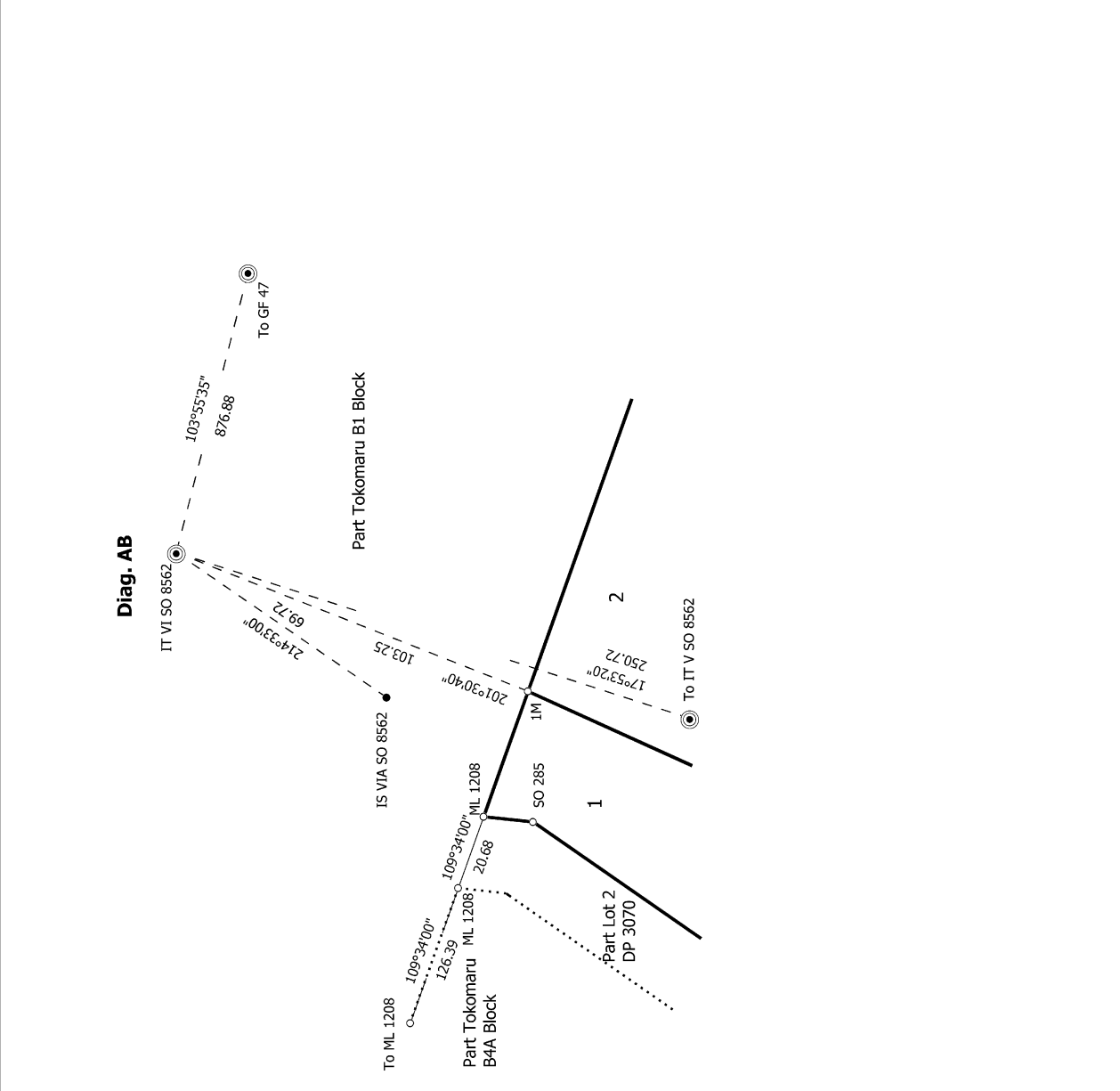
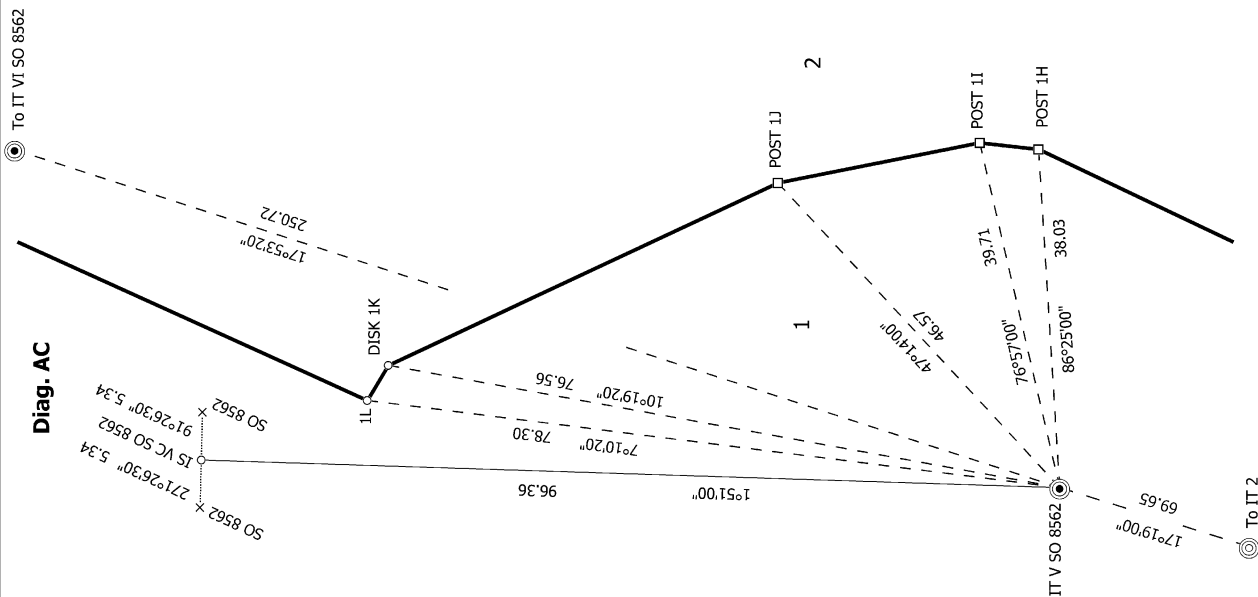
Date:
 June 2023



Design:
 Drawn:
 Checked:

GC130670cc2

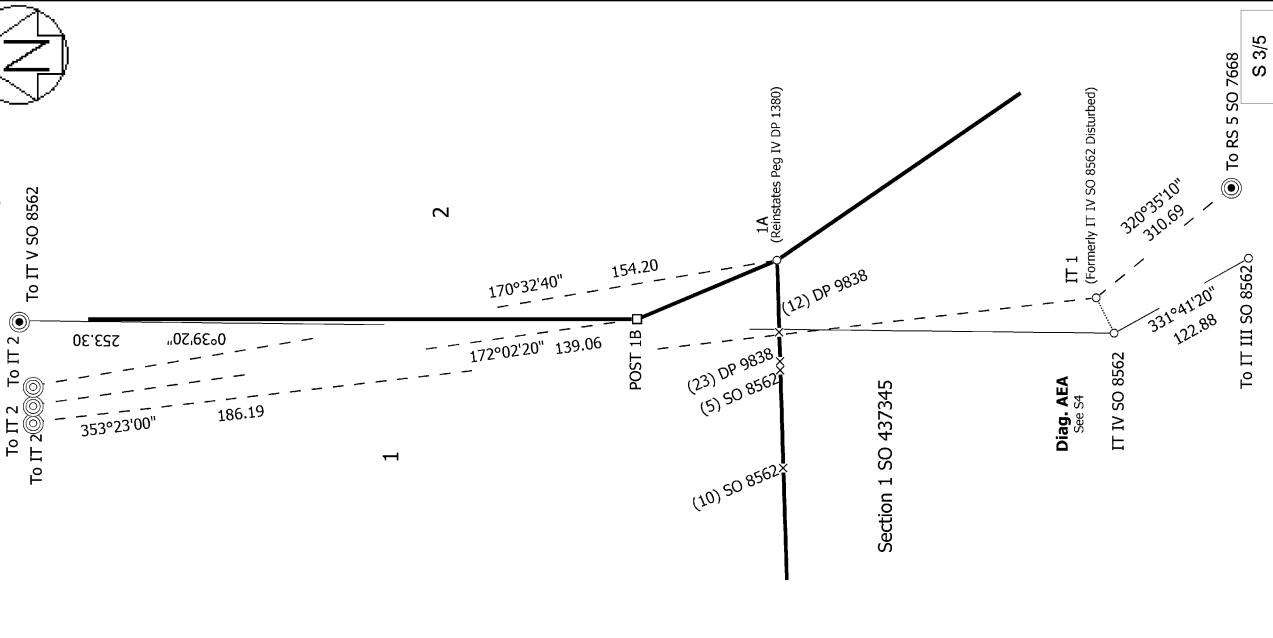
Sheet 1 of 1



S 2/5	Record of Survey LT 593241 Approved on: 7/06/2024
GC Ref: 13067 King Surveyor: Timothy Brian Ronke Firm: Grant & Cooke Surveyors Ltd Date of Survey: 28/06/2023	Lots 1 and 2 being a subdivision of Part Tokomaru B4A Block and easement over Section 1 SO 487345
Land District: Gisborne Digitally Generated Plan Generated on: 07/06/2024 06:21 am Page 14 of 25	



Diag. AE

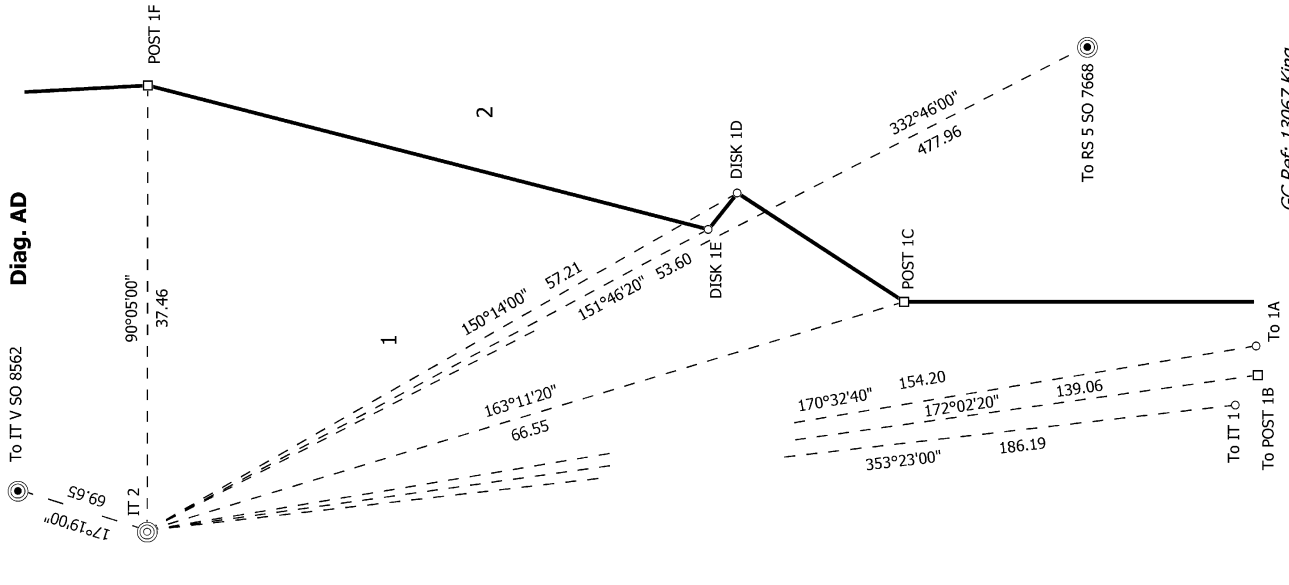


To RS 5 SO 7668
S 3/5

Record of Survey
LT 593241
Approved on: 7/06/2024

Surveyor: Timothy Brian Ronke
Firm: Grant & Cooke Surveyors Ltd
Date of Survey: 28/06/2023

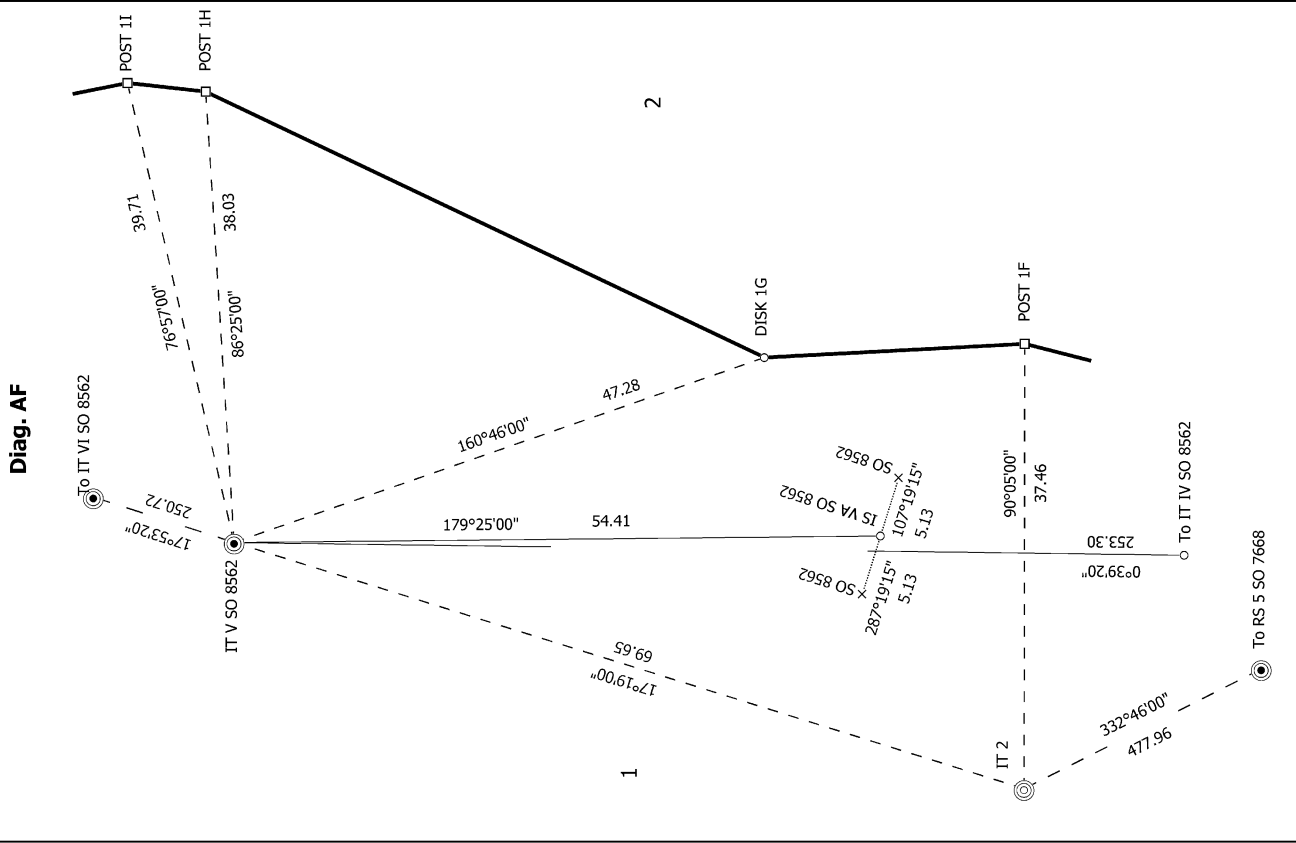
Diag. AD



GC Ref: 13067 King

Lots 1 and 2 being a subdivision of Part Tokomaru B4A Block and easement
over Section 1 SO 437345

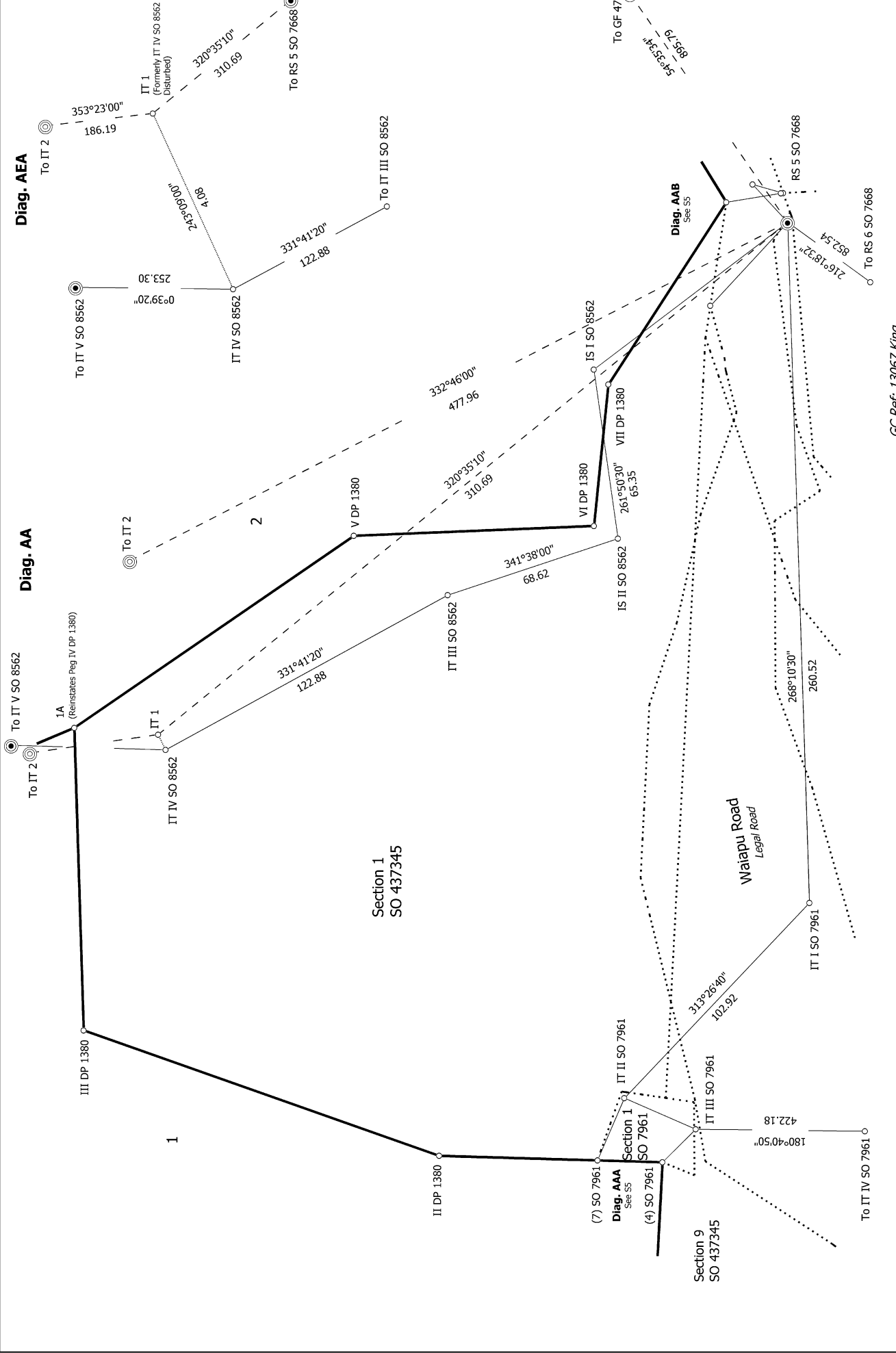
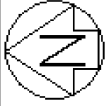
Diag. AF



Land District: Gisborne

Digitally Generated Plan

Generated on: 07/06/2024 06:21 am | Page 15 of 25



S 4/5

Record of Survey
 LT 593241
 Approved on: 7/06/2024

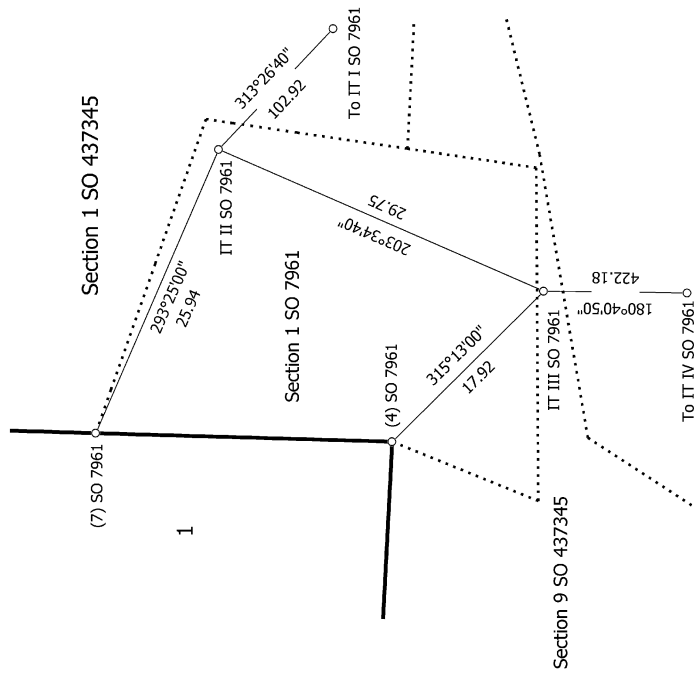
Surveyor: Timothy Brian Ronke
 Firm: Grant & Cooke Surveyors Ltd
 Date of Survey: 28/06/2023

Lots 1 and 2 being a subdivision of Part Tokomaru B4A Block and easement over Section 1 SO 437345

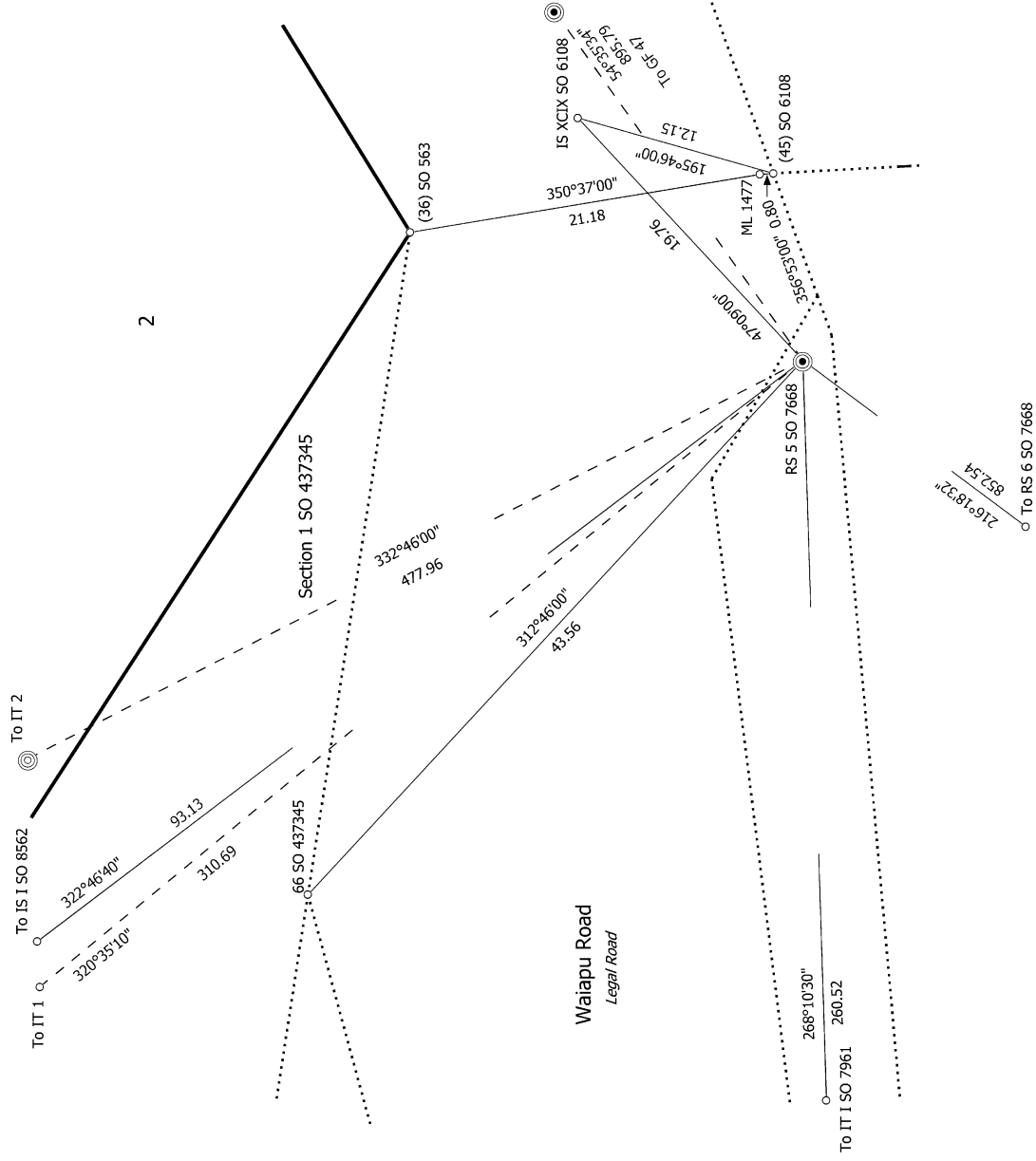
Land District: Gisborne
Digitally Generated Plan
 Generated on: 07/06/2024 06:21:00 Page 16 of 25



Diag. AAA



Diag. AAB



GC Ref: 13067 King

Land District: Gisborne

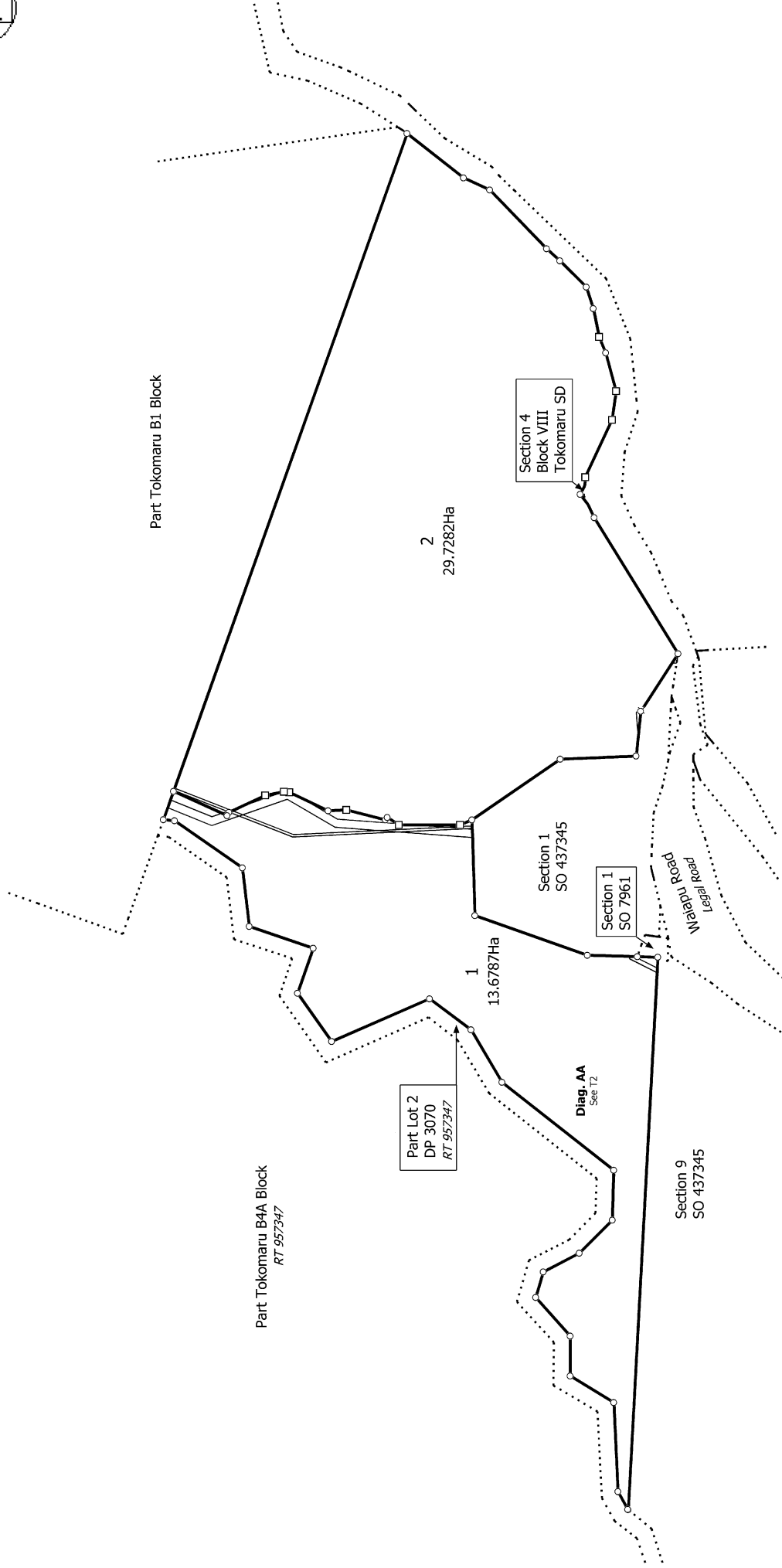
Lots 1 and 2 being a subdivision of Part Tokomaru B4A Block and easement over Section 1 SO 437345

Surveyor: Timothy Brian Ronke
Firm: Grant & Cooke Surveyors Ltd
Date of Survey: 28/06/2023

Record of Survey
LT 593241
Approved on: 7/06/2024



Diag. A



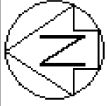
GC Ref: 13067 King

Land District: Gisborne

Lots 1 and 2 being a subdivision of Part Tokomaru B4A Block and easement over Section 1 SO 437345

Surveyor: Timothy Brian Ronke
Firm: Grant & Cooke Surveyors Ltd
Date of Survey: 28/06/2023

Record of Survey
LT 593241
Approved on: 7/06/2024



Part Tokomaru B4A BLK
RT 957347

Diag. B

Part Tokomaru B1 Block

2
29.7282Ha

109°34'00"
840.61

Diag. BA
See 14

Part Tokomaru
B4A Block
DP 3070
RT 957347

Part Lot 2
DP 3070
RT 957347

1
13.6787Ha

Diag. BB
See 18

325°30'00"
129.77

Section 1 SO 437345

V DP 1380

357°39'00"
91.91

Diag. BC
See 18

VI DP 1380

30°35'00"
68.27

Diag. BD
See 13

POST (14) SO 6108

ML 1477

295°02'00"
76.48

(30) SO 6108

238°21'01"

193.44

Waipatu Road
Legal Road

(36) SO 5638

278°10'00"
35.10

POST (13) SO 6108

254°47'00"
48.08

POST (9) SO 6108

247°40'00"
20.70

POST (16) SO 6108

258°33'00"
35.16

POST (28) SO 6108

251°48'00"
35.16

(49) SO 6108

224°41'30"
44.94

(50) SO 6108

222°26'00"
21.65

(11) SO 6108

229°57'00"
99.14

ML 1477

204°48'00"
34.80

ML 1477

218°06'00"
86.84

SO 1208

Diag. BD

2
29.7282Ha

ML 1477

297°31'00"

11.87

SO 6108

222°20'00"

15.63

Section 4
Block VIII
Tokomaru SD

274°00'00"

10.38

POST (14) SO 6108

295°02'00"

76.48

T 3/8

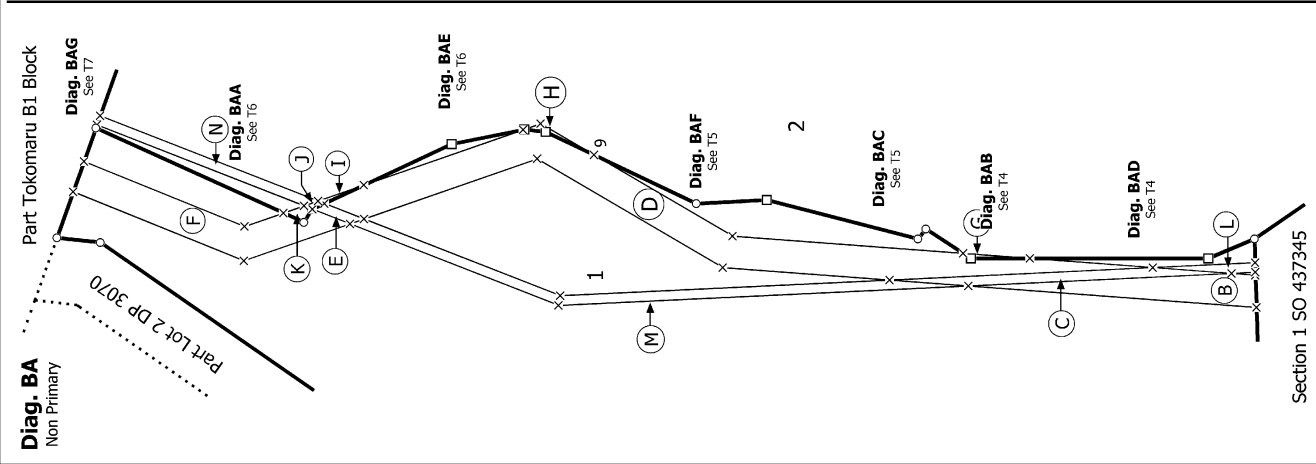
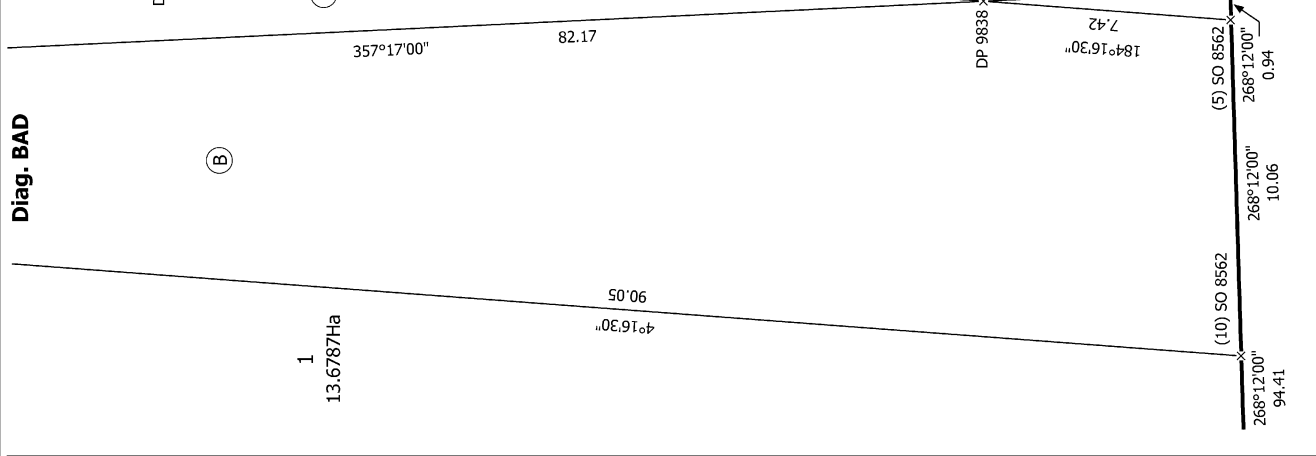
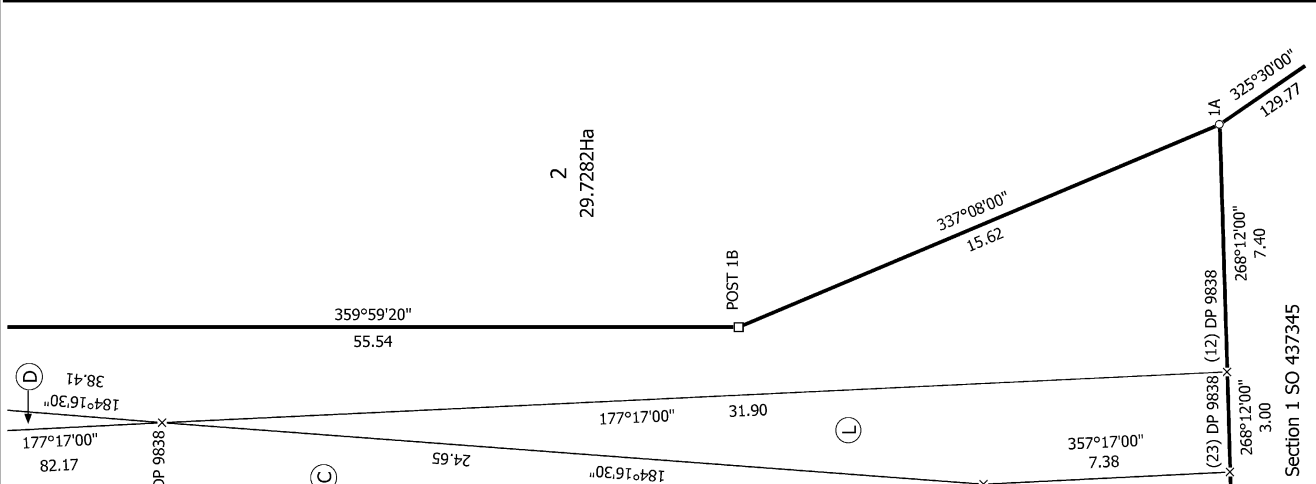
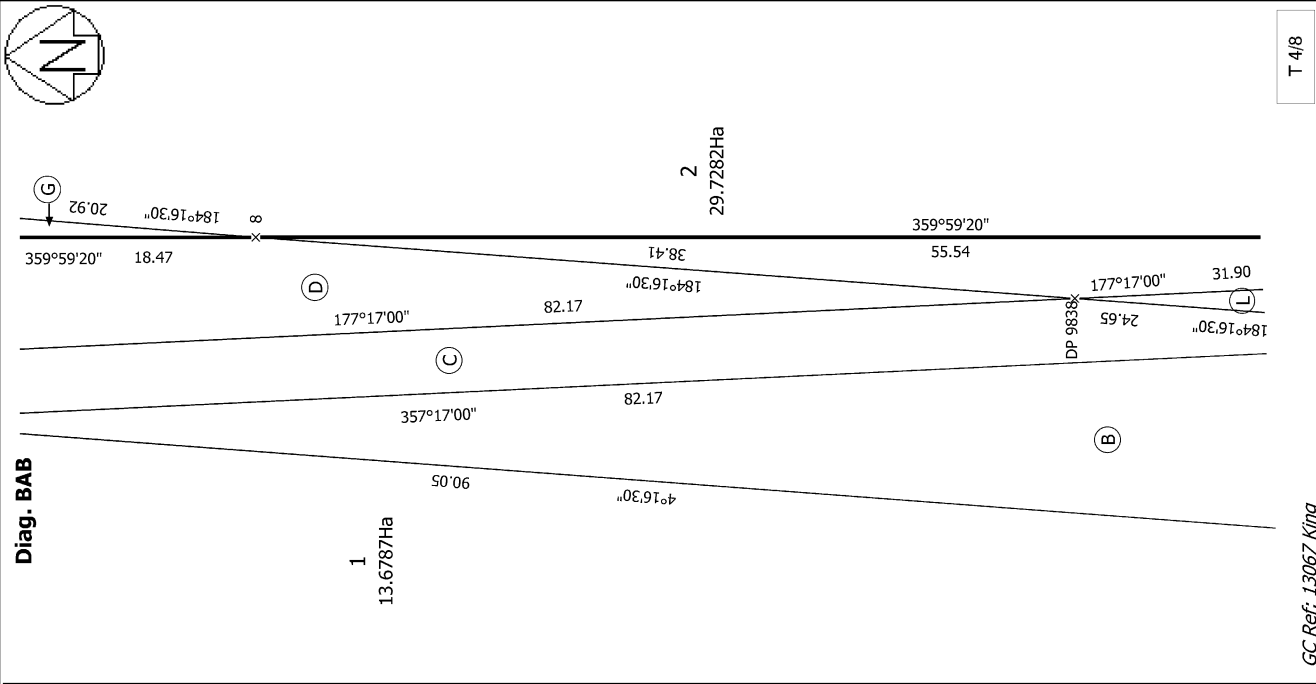
GC Ref: 13067 King

Surveyor: Timothy Brian Ronke
Firm: Grant & Cooke Surveyors Ltd
Date of Survey: 28/06/2023

Record of Survey
LT 593241
Approved on: 7/06/2024

Lots 1 and 2 being a subdivision of Part Tokomaru B4A Block and easement
over Section 1 SO 437345

Land District: Gisborne
Digitally Generated Plan
Generated on: 07/06/2024 10:21 am | Page 20 of 25



T 4/8

GC Ref: 13067 King

Record of Survey
 LT 593241
 Approved on: 7/06/2024

Surveyor: Timothy Brian Ronke
 Firm: Grant & Cooke Surveyors Ltd
 Date of Survey: 28/06/2023

Lots 1 and 2 being a subdivision of Part Tokomaru B4A Block and easement
 over Section 1 SO 437345

Land District: Gisborne
 Digitally Generated Plan
 Generated on: 07/06/2024 10:21:06:21 am | Page 21 of 25

