



# Record of Survey - SO 600971

---

**Survey Number** SO 600971  
**Surveyor Reference** 6387 Hadley  
**Surveyor** Guy Derek Panckhurst  
**Survey Firm** Surveying The Bay Ltd (Hastings)  
**Surveyor Declaration** I Guy Derek Panckhurst, being a licensed cadastral surveyor, certify that--  
 (a) this dataset provided by me and its related survey are accurate, correct and in accordance with the Cadastral Survey Act 2002 and Cadastral Survey Rules 2021; and  
 (b) the survey was undertaken by me or under my personal direction.  
 Declared on 16 Apr 2024 07:30 PM

---

## Survey Details

**Dataset Description** REINSTATEMENT OF LOT 134 DEEDS PLAN 579  
**Purpose** Complex Boundary Reinstatement  
**Status** Registered **Type** Survey  
**Land District** Hawkes Bay **Survey Class** Class A  
**Meridional Circuit** Hawkes Bay 2000 **Vertical Datum** None

---

## Survey Dates

**Surveyed Date** 17/01/2024 **Certified Date** 16/04/2024  
**Submitted Date** 16/04/2024 19:30:55 **Survey Approval Date** 17/04/2024  
**Deposit Date**

---

## Referenced Surveys

Survey Number	Land District	Bearing Correction
DP 6489	Hawkes Bay	0°00'00"
DP 26796	Hawkes Bay	0°00'00"
DEED 579	Hawkes Bay	0°00'00"
DP 12709	Hawkes Bay	0°00'00"
SO 8519	Hawkes Bay	0°00'00"
DP 352839	Hawkes Bay	0°00'00"
DP 533253	Hawkes Bay	0°00'00"
SO 535941	Hawkes Bay	0°00'00"
DP 556903	Hawkes Bay	0°00'00"

---

## Territorial Authorities

Napier City

---

## Comprised In

RT 148975

# Mark and Vector

Survey Number SO 600971  
 Meridional Circuit Hawkes Bay 2000

From	To	Code	Bearing	Adpt Surv	Bearing Correction	Distance	Adpt Surv	Class
SS 597 SO 4891	IS II DP 26796	ob0	320°21'50"	A SO 8519	0°00'00"	19.41	A DP 26796	
IS II DP 26796	NAIL 201 SO 600971	ob39	320°21'50"	A SO 8519	0°00'00"	73.94	C	
NAIL 201 SO 600971	NAIL 200 SO 600971	ob47	320°21'50"	M		14.28	M	
NAIL 200 SO 600971	IS III DP 6489	ob49	320°21'50"	A SO 8519	0°00'00"	55.51	C	
IS III DP 6489	SS 596 SO 4891	ob27	320°21'50"	A SO 8519	0°00'00"	107.95	A DP 6489	
SS 596 SO 4891	MA 1 DP 533253	ob2	176°43'00"	A DP 533253	0°00'00"	151.83	A DP 533253	
MA 1 DP 533253	SS 597 SO 4891	ob5	109°11'50"	A DP 533253	0°00'00"	173.89	A DP 533253	
SS 597 SO 4891	NAIL 201 SO 600971	ob1	320°21'50"	M		93.35	M	
NAIL 200 SO 600971	SS 596 SO 4891	ob50	320°21'50"	M		163.46	M	
SS 596 SO 4891	SS 600 SO 4891	ob3	230°17'15"	M		90.97	M	
SS 600 SO 4891	IS I DP 352839	ob8	140°20'23"	A DP 352839	0°00'00"	93.75	A DP 352839	
IS I DP 352839	SS 599 SO 4891	ob9	140°20'23"	A DP 352839	0°00'00"	17.49	A DP 352839	
SS 599 SO 4891	MA 1 DP 533253	ob10	135°29'00"	A SO 535941	0°00'00"	10.97	A SO 535941	
MA 1 DP 533253	SS 598 SO 4891	ob6	140°40'10"	A DP 533253	0°00'00"	160.44	A DP 533253	
SS 598 SO 4891	SS 597 SO 4891	ob12	43°03'20"	A DP 556903	0°00'00"	91.59	A DP 556903	
SS 599 SO 4891	IS I DP 12709	ob11	140°20'23"	A DP 12709	0°00'00"	25.08	A DP 12709	
IS I DP 12709	IS IV DP 12709	ob13	140°20'23"	A DP 12709	0°00'00"	91.04	A DP 12709	
IS IV DP 12709	SS 598 SO 4891	ob15	140°20'23"	A DP 12709	0°00'00"	55.25	A DP 12709	
IS I DP 12709	IT II DP 12709	ob14	54°39'30"	A DP 12709	0°00'00"	50.82	A DP 12709	
IT II DP 12709	IS VI DP 12709	ob16	142°02'00"	A DP 12709	0°00'00"	41.04	A DP 12709	
IS VI DP 12709	IS V DP 12709	ob62	142°02'00"	A DP 12709	0°00'00"	44.12	A DP 12709	
IS V DP 12709	IS IV DP 12709	ob17	227°51'20"	A DP 12709	0°00'00"	48.19	A DP 12709	
MA 1 DP 533253	BS 2 DP 533253	ob7	45°38'00"	A DP 533253	0°00'00"	15.65	A DP 533253	
BS 2 DP 533253	MA 3 DP 533253	ob19	54°30'00"	A DP 533253	0°00'00"	33.10	A DP 533253	
MA 3 DP 533253	MA 1 DP 533253	ob21	231°39'00"	A DP 533253	0°00'00"	48.62	A DP 533253	
BS 2 DP 533253	SS 598 SO 4891	ob20	146°10'20"	A DP 533253	0°00'00"	162.57	A DP 533253	
MA 3 DP 533253	DISK 3 DP 533253	ob22	117°20'00"	A DP 533253	0°00'00"	12.16	A DP 533253	
DISK 3 DP 533253	IT II DP 12709	ob24	172°52'00"	A DP 12709	0°00'00"	6.73	A DP 12709	
MA 3 DP 533253	UNMK 1 DP 533253	ob23	21°19'00"	A DP 533253	0°00'00"	5.45	A DP 533253	
IS III DP 6489	PEG (19) DP 6489	ob28	266°58'00"	A DP 6489	0°00'00"	1.75	A DP 6489	
PEG (19) DP 6489	PEG (23) DEED 579	ob29	230°22'04"	A DP 6489	0°00'00"	35.20	A DEED 579	
PEG (23) DEED 579	UNMK 1 DP 533253	ob30	140°23'00"	A DP 533253	0°00'00"	13.84	A DP 533253	
UNMK 1 DP 533253	DISK 3 DP 533253	ob26	140°23'00"	A DP 533253	0°00'00"	13.84	A DP 533253	

# Mark and Vector

Survey Number SO 600971

Meridional Circuit Hawkes Bay 2000

From	To	Code	Bearing	Adpt Surv	Bearing Correction	Distance	Adpt Surv	Class
IS V DP 12709	NAIL (24) DP 12709	ob18	92°07'00"	A DP 12709	0°00'00"	8.24 A	DP 12709	
DISK 3 DP 533253	UNMK 26 SO 600971	ob25	140°20'20"	A DP 12709	0°00'00"	27.50 C		
UNMK 26 SO 600971	NAIL (24) DP 12709	ob33	140°20'20"	A DP 12709	0°00'00"	68.79 C		
IS II DP 26796	PEG (32) DP 26796	ob40	309°04'00"	A DP 26796	0°00'00"	7.16 A	DP 26796	
IS II DP 26796	POST (33) DP 26796	ob41	241°18'00"	A DP 26796	0°00'00"	37.28 A	DP 26796	
POST (33) DP 26796	PEG (32) DP 26796	ob43	50°27'00"	A DP 26796	0°00'00"	35.20 A	DP 26796	
NAIL (24) DP 12709	POST (33) DP 26796	ob31	140°20'20"	C		13.74 C		
DISK 38 SO 600971	DISK 39 SO 600971	ob44	320°21'50"	R		13.78 A	DEED 579	Class A
DISK 39 SO 600971	PEG (19) DP 6489	ob45	320°21'50"	C		54.93 C		
DISK 39 SO 600971	UNMK 26 SO 600971	ob46	229°59'00"	R		35.21 R		Class A
SS 596 SO 4891	MA 203 SO 600971	ob4	134°48'20"	M		164.45 M		
MA 203 SO 600971	MA 202 SO 600971	ob51	136°43'40"	M		22.30 M		
MA 202 SO 600971	SS 597 SO 4891	ob57	151°53'00"	M		86.90 M		
MA 203 SO 600971	NAIL 200 SO 600971	ob52	231°08'20"	M		15.94 M		
MA 202 SO 600971	NAIL 201 SO 600971	ob58	255°39'30"	M		19.19 M		
NAIL 201 SO 600971	MA 204 SO 600971	ob48	231°08'00"	M		17.40 M		
MA 204 SO 600971	IS 205 SO 600971	ob56	262°34'00"	M		17.69 M		
IS 205 SO 600971	MA 206 SO 600971	ob59	30°21'00"	M		14.44 M		
MA 206 SO 600971	NAIL 200 SO 600971	ob61	51°21'00"	M		18.82 M		
MA 203 SO 600971	PEG (32) DP 26796	ob53	152°27'00"	M		82.81 M		
MA 203 SO 600971	DISK 39 SO 600971	ob54	236°27'00"	M		17.44 M		
MA 203 SO 600971	DISK 38 SO 600971	ob55	195°50'00"	M		21.05 M		
IS 205 SO 600971	UNMK 26 SO 600971	ob60	285°11'00"	C		7.35 C		

# Mark and Vector

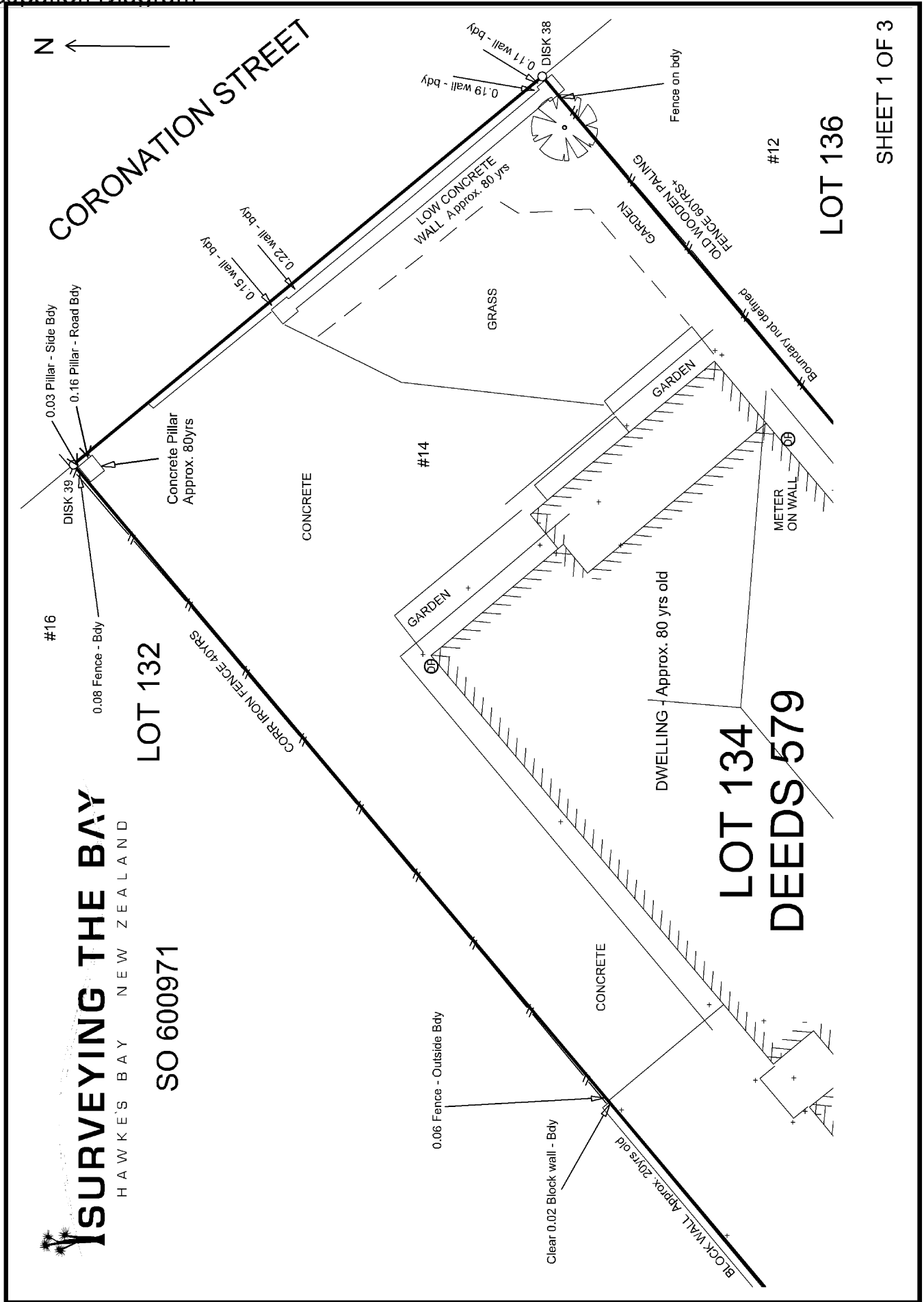
Survey Number SO 600971

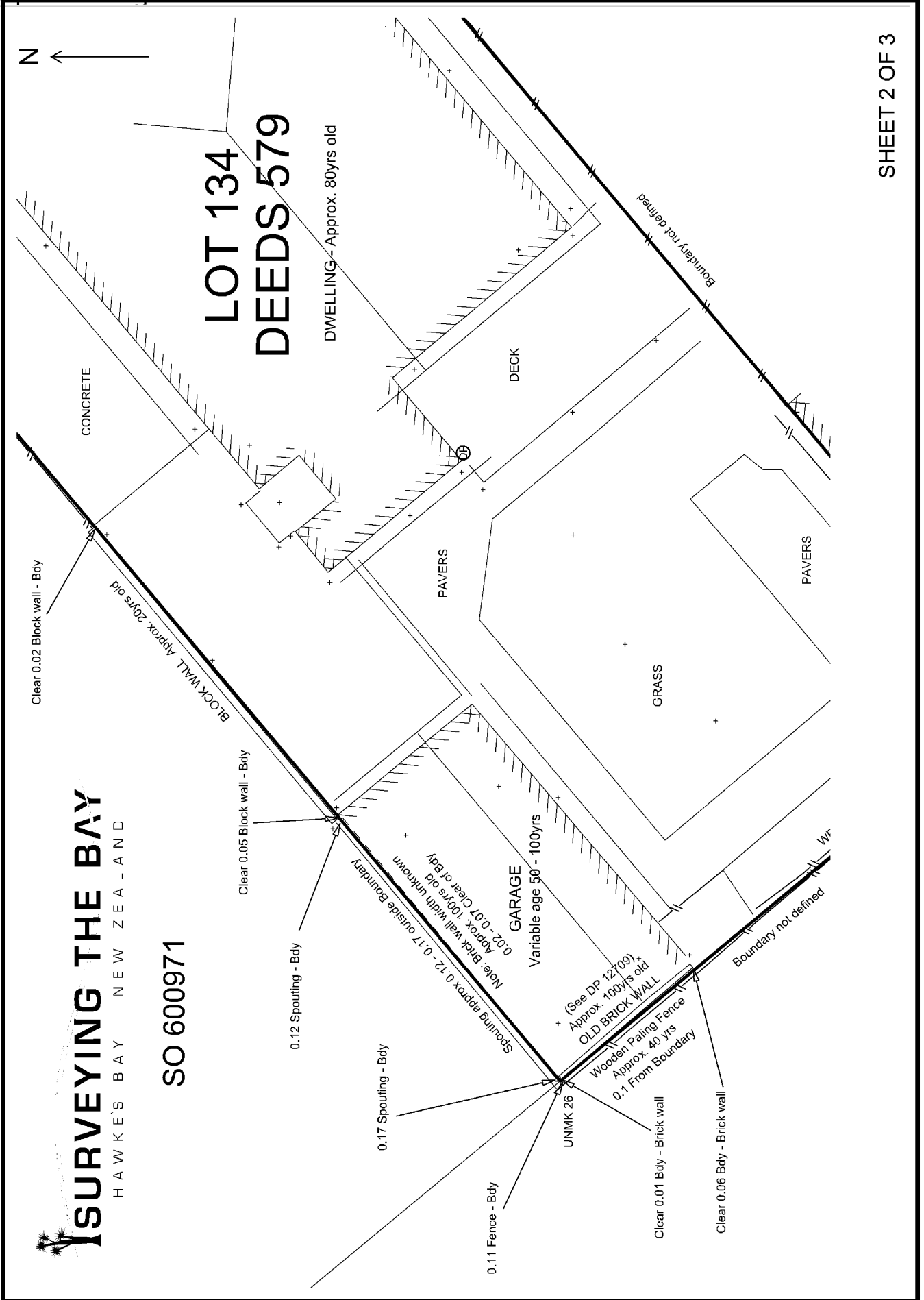
Meridional Circuit Hawkes Bay 2000

From	To	Code	Bearing	Adpt Surv	Bearing Correction	Distance	Adpt Surv	Class
PEG (32) DP 26796	DISK 38 SO 600971	ob42	320°21'50" C			69.04 C		

Mark Name	Mark Condition	Description
IS 205 SO 600971		-0.2 in grass
MA 202 SO 600971		Top of kerb
MA 203 SO 600971		Top of kerb
MA 204 SO 600971		In concrete driveway
MA 206 SO 600971		In concrete driveway
NAIL 200 SO 600971		In sealed footpath
NAIL 201 SO 600971		In sealed footpath
SS 596 SO 4891		CTBU; Under cast iron cover
SS 597 SO 4891		CTBV; Under cast iron cover
SS 598 SO 4891		CTC9
SS 600 SO 4891		CTCC; Under cast iron cover
UNMK 26 SO 600971		Inaccessible behind brick wall of shed

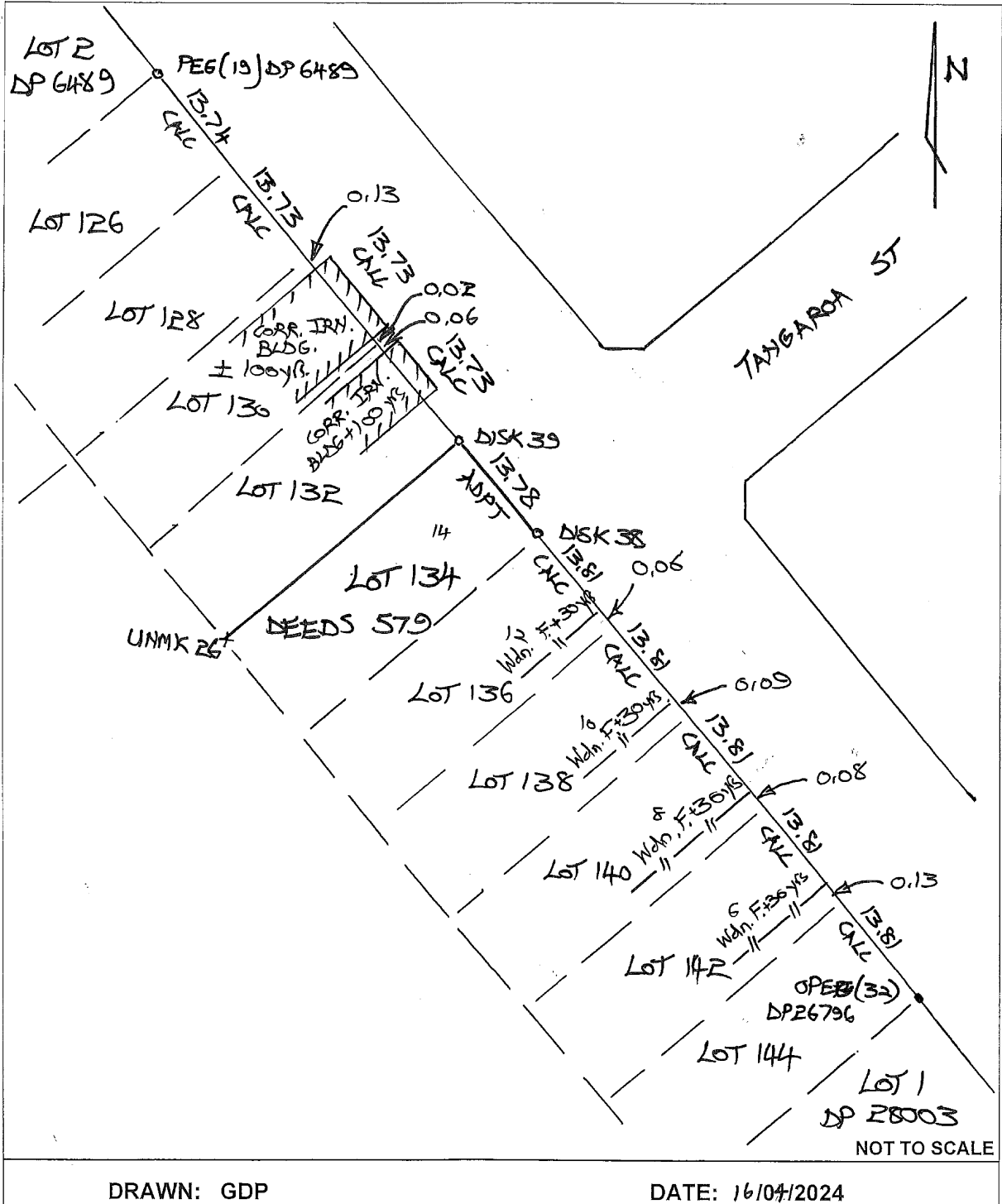
\*\*\* End of Report \*\*\*







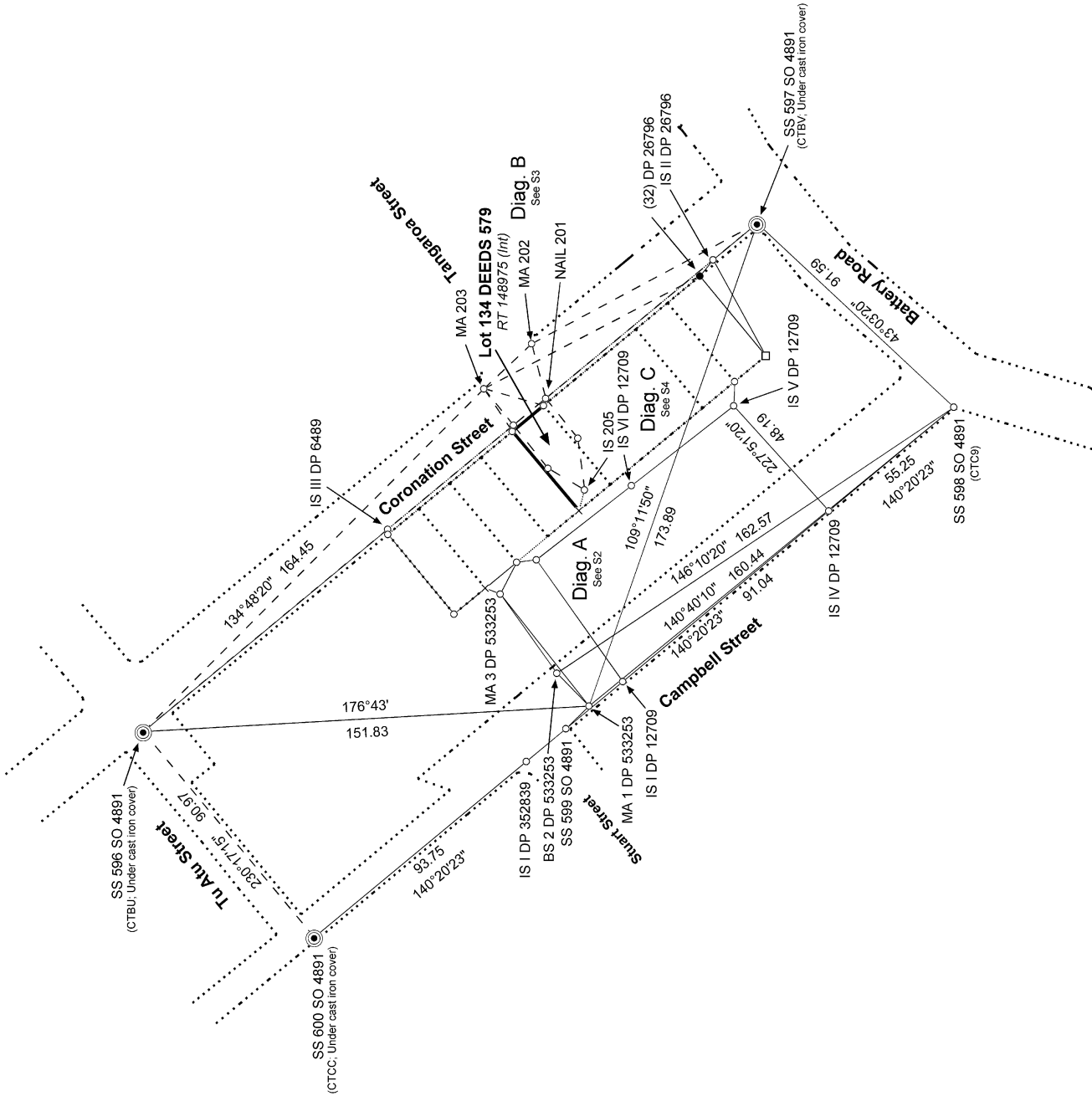
OCCUPATION DIAGRAM Plan No. SO 600971



DRAWN: GDP

DATE: 16/04/2024

SHEET 3 OF 3



6387 Hadley  
 Land District: Hawkes Bay  
**Digitally Generated Plan**  
 Generated on: 17/04/2024 10:17 am | Page 8 of 11

**REINSTATEMENT OF LOT 134 DEEDS PLAN 579**

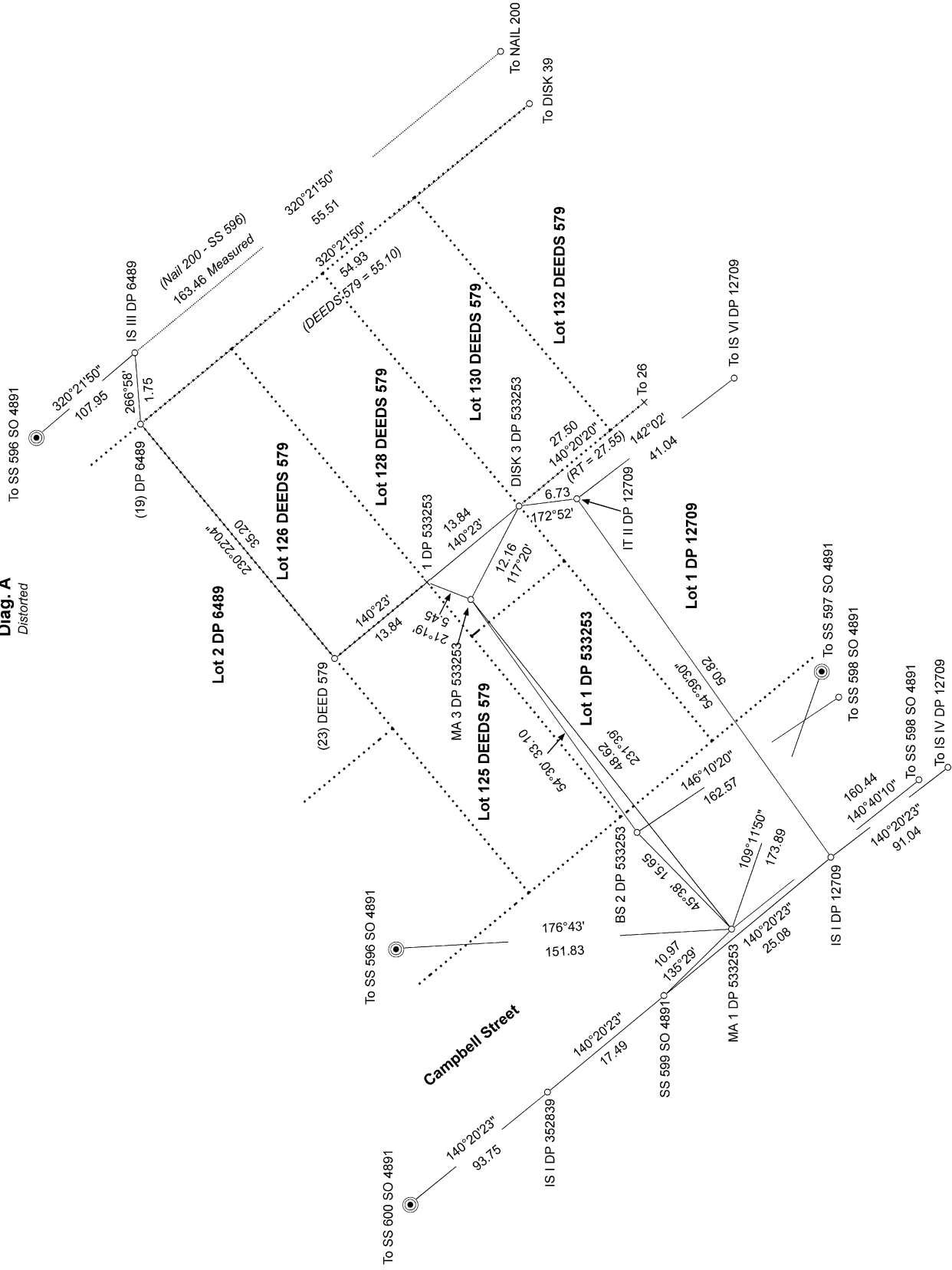
Surveyor: Guy Derek Panckhurst  
 Firm: Surveying The Bay Ltd (Hastings)  
 Date of Survey: 17/01/2024

Record of Survey  
 SO 600971  
 Approved on: 17/04/2024





Diag. A  
Distorted



6387 Hadley

Land District: Hawkes Bay

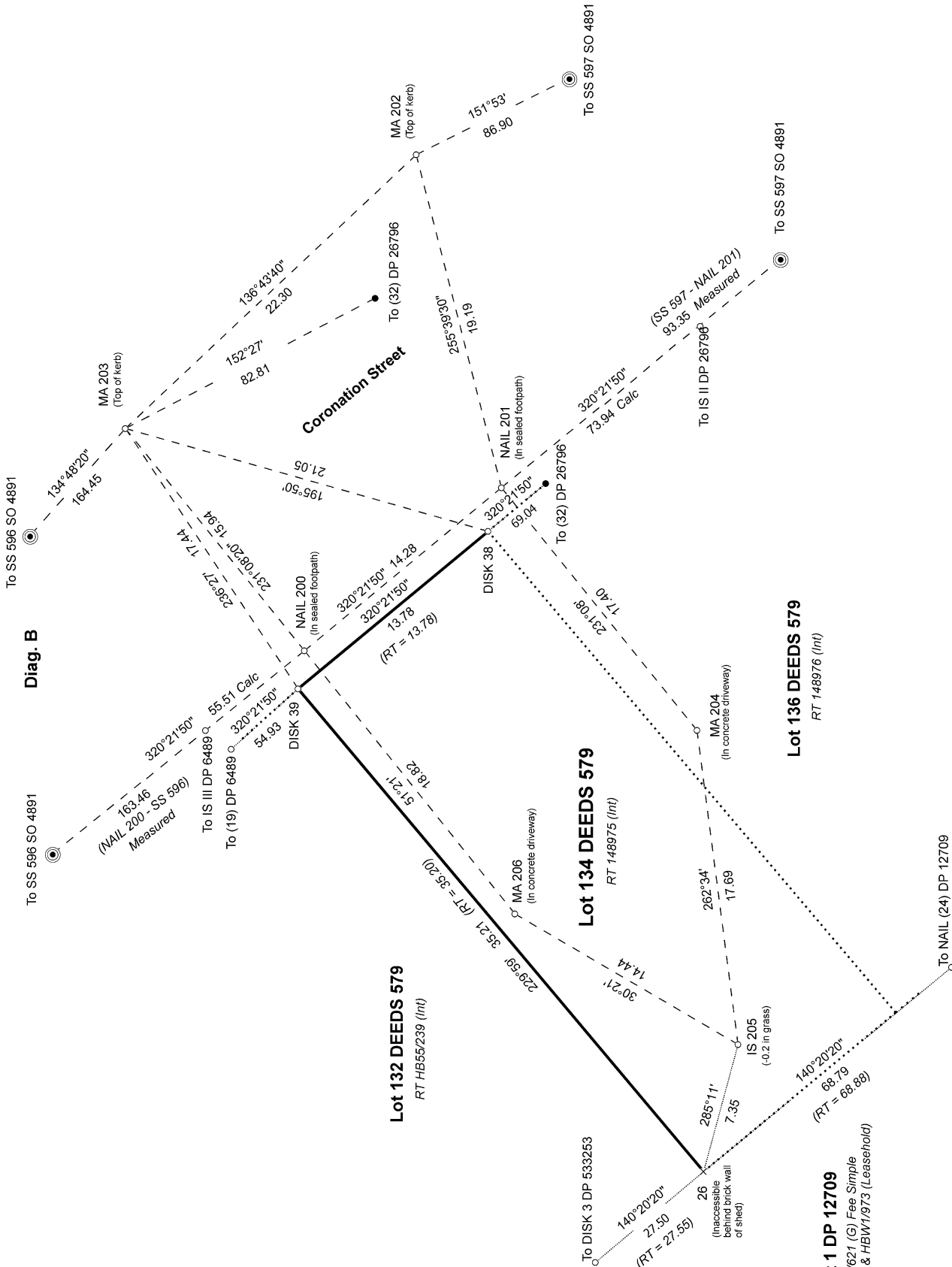
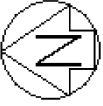
**Digitally Generated Plan**

Generated on: 17/04/2024 10:17 am | Page 9 of 11

**REINSTATEMENT OF LOT 134 DEEDS PLAN 579**

Surveyor: Guy Derek Panckhurst  
Firm: Surveying The Bay Ltd (Hastings)  
Date of Survey: 17/01/2024

Record of Survey  
SO 600971  
Approved on: 17/04/2024



Diag. B

6387 Hadley

S 3/4

Land District: Hawkes Bay

Digitally Generated Plan

Generated on: 17/04/2024 10:17 am Page 10 of 11

REINSTATEMENT OF LOT 134 DEEDS PLAN 579

Surveyor: Guy Derek Panckhurst  
Firm: Surveying The Bay Ltd (Hastings)  
Date of Survey: 17/01/2024

Record of Survey  
SO 600971  
Approved on: 17/04/2024

Lot 1 DP 12709  
RT HBE1621 (G) Fee Simple  
RTs HBW1972 & HBW1973 (Leasehold)

Lot 132 DEEDS 579  
RT HB55239 (Int)

Lot 134 DEEDS 579  
RT 148975 (Int)

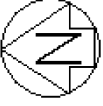
Lot 136 DEEDS 579  
RT 148976 (Int)

To DISK 3 DP 533253  
140°20'20"  
27.50  
(RT = 27.55)  
26  
(Inaccessible behind brick wall of shed)  
285°11'  
7.35  
140°20'20"  
68.79  
(RT = 68.89)  
To NAIL (24) DP 12709

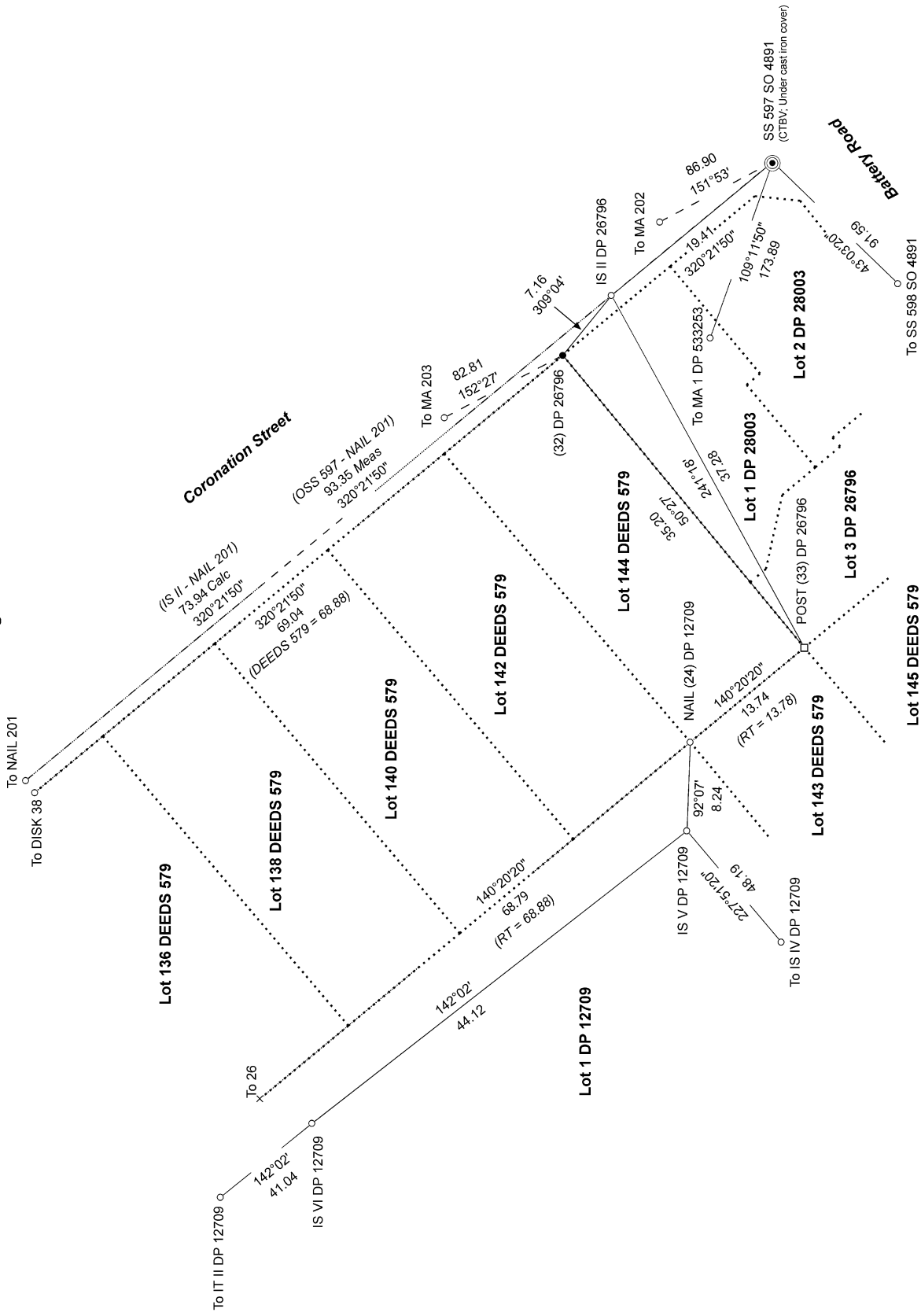
To DISK 3 DP 26796  
320°21'50"  
69.04  
To (32) DP 26796  
320°21'50"  
73.94 Calc  
To IS II DP 26796  
(SS 597 - NAIL 201)  
93.35 Measured  
To SS 597 SO 4891

Coronation Street  
To (32) DP 26796  
152°27'  
82.81  
136°43'40"  
22.20  
151°53'  
86.90  
To SS 597 SO 4891

To SS 596 SO 4891  
134°48'20"  
164.45  
MA 203 (Top of kerb)  
195°50'  
21.05  
To IS III DP 6489  
(NAIL 200 - SS 596)  
163.46 Measured  
To IS III DP 6489  
320°21'50"  
55.51 Calc  
To (19) DP 6489  
320°21'50"  
54.93  
To IS II DP 26796  
320°21'50"  
73.94 Calc  
To IS II DP 26796  
(SS 597 - NAIL 201)  
93.35 Measured  
To SS 597 SO 4891



Diag. C



6387 Hadley

S 4/4

Land District: Hawkes Bay

**Digitally Generated Plan**

Generated on: 17/04/2024 10:17:am | Page 11 of 11

**REINSTATEMENT OF LOT 134 DEEDS PLAN 579**

Surveyor: Guy Derek Panckhurst  
Firm: Surveying The Bay Ltd (Hastings)  
Date of Survey: 17/01/2024

Record of Survey  
SO 600971  
Approved on: 17/04/2024