



Record of Survey - SO 589817

Survey Number	SO 589817
Surveyor Reference	MacLean Road Stopping
Surveyor	Michael Philip Proude
Survey Firm	Foresight Surveying Limited
Surveyor Declaration	I Michael Philip Proude, being a licensed cadastral surveyor, certify that-- (a) this dataset provided by me and its related survey are accurate, correct and in accordance with the Cadastral Survey Act 2002 and Cadastral Survey Rules 2021; and (b) the survey was undertaken by me or under my personal direction. Declared on 02 Oct 2023 11:07 AM

Survey Details

Dataset Description	Sections 1 - 3		
Purpose	Legalisation		
Status	Approved as to Survey	Type	Survey
Land District	Wellington	Survey Class	Class B
Meridional Circuit	Wanganui 2000	Vertical Datum	None

Survey Dates

Surveyed Date	13/06/2023	Certified Date	02/10/2023
Submitted Date	02/10/2023 11:07:11	Survey Approval Date	02/10/2023
Deposit Date			

Referenced Surveys

Survey Number	Land District	Bearing Correction
DP 18718	Wellington	-0°00'30"
SO 14013	Wellington	-0°00'30"
SO 474816	Wellington	0°00'00"
DP 54597	Wellington	-0°00'30"
DP 578656	Wellington	0°00'00"

Territorial Authorities

Rangitikei District

Created Parcels

Parcels	Parcel Intent	Area	RT Reference
Section 1 Survey Office Plan 589817	Legalisation	0.0634 Ha	
Section 2 Survey Office Plan 589817	Legalisation	1.2090 Ha	
Section 3 Survey Office Plan 589817	Legalisation	0.0024 Ha	
	Road		
	Road		
Total Area		<hr/> 1.2748 Ha	

Mark and Vector

Survey Number SO 589817
 Meridional Circuit Wanganui 2000

From	To	Code	Bearing	Adpt Surv	Bearing Correction	Distance	Adpt Surv	Class
BP 3 SO 474816	IT (1) SO 13993	ob0	283°52'00"	M		316.99 M		
IT (1) SO 13993	IT I DP 54597	ob15	9°00'50"	M		852.01 M		
IT I DP 54597	IT I SO 589817	ob3	16°41'35"	M		717.13 M		
IT I SO 589817	BP 3 SO 474816	ob7	181°08'00"	M		1,604.69 M		
BP 3 SO 474816	IT SO 24947	ob1	59°03'40"	M		101.78 M		
IT SO 24947	IT (1) SO 13993	ob17	273°25'40"	M		395.71 M		
IT I DP 54597	IT II DP 18718	ob4	19°00'10"	M		412.51 M		
IT II DP 18718	IT I SO 589817	ob18	13°34'20"	M		305.40 M		
IT I SO 589817	IT X DP 54597	ob8	154°00'30"	M		293.03 M		
IT X DP 54597	IT SO 24947	ob24	183°14'10"	M		1,290.71 M		
IT I SO 589817	IT II SO 589817	ob9	53°46'20"	M		60.07 M		
IT II SO 589817	IT XI DP 54597	ob27	162°21'50"	M		98.90 M		
IT XI DP 54597	IT X DP 54597	ob34	166°16'10"	M		210.64 M		
IT I SO 589817	IT XI DP 54597	ob10	126°50'10"	M		97.99 M		
IT II DP 18718	IT X DP 54597	ob19	80°30'00"	M		202.87 M		
IT II DP 18718	IT III DP 54597	ob20	161°41'00"	M		250.58 M		
IT III DP 54597	IT X DP 54597	ob42	24°05'20"	M		297.25 M		
IT I DP 54597	IT VI DP 54597	ob5	121°18'30"	M		105.71 M		
IT VI DP 54597	IT III DP 54597	ob44	30°40'00"	M		240.74 M		
IT I DP 54597	BP 3 SO 474816	ob6	169°14'45"	M		933.87 M		
BP 3 SO 474816	IT III SO 34312	ob2	59°03'40"	M		105.70 M		
IT III SO 34312	IT SO 24947	ob45	238°55'20"	M		3.91 M		
IT (1) SO 13993	IT I SO 34312	ob16	94°58'20"	A	SO 474816	0°00'00"	64.92 A	SO 474816
IT I SO 34312	BP 3 SO 474816	ob46	106°08'50"	A	SO 474816	0°00'00"	253.04 A	SO 474816
IT X DP 54597	PEG (1) DP 54597	ob25	125°32'30"	A	DP 54597	-0°00'30"	7.71 A	DP 54597
IT XI DP 54597	IT XII DP 54597	ob35	51°14'30"	A	DP 54597	-0°00'30"	153.27 A	DP 54597
IT XII DP 54597	IR XIII DP 54597	ob48	132°10'20"	A	DP 54597	-0°00'30"	75.26 A	DP 54597
IR XIII DP 54597	IT XIV DP 54597	ob50	123°19'40"	A	DP 54597	-0°00'30"	90.91 A	DP 54597
IT XIV DP 54597	IT XV DP 54597	ob51	242°10'20"	A	DP 54597	-0°00'30"	152.85 A	DP 54597
IT XV DP 54597	IT XVI DP 54597	ob52	150°31'50"	A	DP 54597	-0°00'30"	155.34 A	DP 54597
IT XVI DP 54597	IT II DP 54597	ob53	214°16'10"	A	DP 54597	-0°00'30"	88.22 A	DP 54597
IT II DP 54597	IT X DP 54597	ob54	310°33'10"	A	DP 54597	-0°00'30"	122.15 A	DP 54597
IT II SO 589817	IT III SO 589817	ob28	92°33'50"	M		80.97 M		
IT III SO 589817	IT IV SO 589817	ob117	84°21'30"	M		54.91 M		
IT IV SO 589817	IT X DP 54597	ob124	190°28'10"	M		305.77 M		
IT IV SO 589817	IT XII DP 54597	ob125	90°17'00"	M		13.97 M		

Mark and Vector

Survey Number SO 589817

Meridional Circuit Wanganui 2000

From	To	Code	Bearing	Adpt Surv	Bearing Correction	Distance	Adpt Surv	Class
IT XII DP 54597	PEG (11) DP 54597	ob49	352°23'30"	A DP 54597	-0°00'30"	22.96 A	DP 54597	
IT IV SO 589817	PEG (11) DP 54597	ob126	25°43'00"	M		25.18 M		
PEG (1) DP 54597	PEG (3) SO 14013	ob47	311°44'30"	A DP 54597	-0°00'30"	11.14 A	DP 54597	
PEG (3) SO 14013	PEG XVI SO 14013	ob55	16°15'30"	A SO 14013	-0°00'30"	0.60 A	SO 14013	
PEG XVI SO 14013	PEG XVII SO 14013	ob56	348°32'30"	A SO 14013	-0°00'30"	53.29 A	SO 14013	
PEG XVII SO 14013	PEG XVIII SO 14013	ob57	342°13'30"	A SO 14013	-0°00'30"	45.38 A	SO 14013	
PEG XVIII SO 14013	PEG XIX SO 14013	ob60	352°26'30"	A SO 14013	-0°00'30"	67.71 A	SO 14013	
PEG XIX SO 14013	PEG XX SO 14013	ob63	347°24'30"	A SO 14013	-0°00'30"	57.76 A	SO 14013	
PEG XX SO 14013	PEG XXI SO 14013	ob66	352°01'30"	A SO 14013	-0°00'30"	53.21 A	SO 14013	
PEG XXI SO 14013	PEG XXII SO 14013	ob69	294°13'30"	A SO 14013	-0°00'30"	19.65 A	SO 14013	
PEG XXII SO 14013	PEG XXIII SO 14013	ob70	261°22'30"	A SO 14013	-0°00'30"	25.73 A	SO 14013	
PEG XXIII SO 14013	PEG XXIV SO 14013	ob71	350°10'30"	A SO 14013	-0°00'30"	15.25 A	SO 14013	
PEG XXIV SO 14013	PEG XXV SO 14013	ob73	66°57'30"	A SO 14013	-0°00'30"	61.84 A	SO 14013	
PEG XXV SO 14013	PEG XXVI SO 14013	ob74	76°16'30"	A SO 14013	-0°00'30"	67.23 A	SO 14013	
PEG XXVI SO 14013	UNMK (1) SO 14013	ob75	173°52'30"	A DP 54597	-0°00'30"	10.15 A	DP 54597	
UNMK (1) SO 14013	PEG (11) DP 54597	ob76	91°28'30"	A SO 14013	-0°00'30"	44.34 A	DP 54597	Class B
PEG XXIII SO 14013	PEG 15 SO 589817	ob72	215°46'30"	C		14.08 C		
PEG XX SO 14013	PEG 10 SO 589817	ob67	259°43'00"	C		10.07 C		
PEG XVII SO 14013	UNMK (7) SO 14013	ob58	255°23'00"	C		10.07 C		
PEG XVII SO 14013	UNMK (9) SO 14013	ob59	75°23'00"	C		10.07 C		
PEG 12 SO 589817	PEG 10 SO 589817	ob144	133°56'00"	C		42.52 C		Class B
PEG 9 SO 589817	PEG 6 SO 589817	ob137	167°24'30"	A SO 14013	-0°00'30"	34.97 C		Class B
PEG 6 SO 589817	PEG 4 SO 589817	ob92	172°26'30"	A SO 14013	-0°00'30"	68.16 C		Class B
PEG 4 SO 589817	PEG 1 SO 589817	ob93	162°13'30"	A SO 14013	-0°00'30"	37.34 C		Class B

Mark and Vector

Survey Number SO 589817

Meridional Circuit Wanganui 2000

From	To	Code	Bearing	Adpt Surv	Bearing Correction	Distance	Adpt Surv	Class
PEG 1 SO 589817	UNMK (7) SO 14013	ob94	162°13'30"	A SO 14013	-0°00'30"	8.39 C		Class B
PEG XVIII SO 14013	PEG 4 SO 589817	ob61	257°20'00"	C		10.10 C		
PEG XVIII SO 14013	PEG 5 SO 589817	ob62	77°20'00"	C		10.10 C		
PEG 15 SO 589817	PEG 16 SO 589817	ob88	350°10'30"	A SO 14013	-0°00'30"	58.92 C		Class B
IT II SO 589817	PEG 16 SO 589817	ob29	306°21'00"	M		45.77 M		
PEG 5 SO 589817	PEG 3 SO 589817	ob106	162°13'30"	A SO 14013	-0°00'30"	36.80 C		Class B
PEG 3 SO 589817	UNMK (9) SO 14013	ob80	162°13'30"	A SO 14013	-0°00'30"	8.24 C		Class B
IT XI DP 54597	PEG 10 SO 589817	ob36	334°20'00"	M		17.80 M		
IT I SO 589817	PEG 15 SO 589817	ob11	78°05'00"	M		22.13 M		
PEG 5 SO 589817	PEG 7 SO 589817	ob107	352°26'30"	A SO 14013	-0°00'30"	67.25 A DP 54597		Class B
PEG 7 SO 589817	PEG 11 SO 589817	ob81	347°24'30"	A SO 14013	-0°00'30"	57.80 A DP 54597		Class B
PEG 11 SO 589817	UNMK (3) SO 14013	ob82	352°01'30"	A SO 14013	-0°00'30"	82.07 A DP 54597		Class B
UNMK (3) SO 14013	UNMK (2) SO 14013	ob83	66°57'30"	A SO 14013	-0°00'30"	8.94 A DP 54597		Class B
UNMK (2) SO 14013	UNMK (1) SO 14013	ob84	76°16'30"	A SO 14013	-0°00'30"	65.07 A DP 54597		Class B
IT II SO 589817	PEG 17 SO 589817	ob31	301°38'00"	M		21.82 M		
IT II SO 589817	POST 18 SO 589817	ob32	51°08'00"	M		20.98 M		
PEG 16 SO 589817	PEG 17 SO 589817	ob108	130°38'00"	C		24.09 C		Class B
PEG 17 SO 589817	POST 18 SO 589817	ob85	87°11'00"	C		34.96 C		Class B
PEG 16 SO 589817	UNMK (4) SO 14013	ob109	350°10'30"	A SO 14013	-0°00'30"	27.58 C		Class BD
IT II SO 589817	UNMK (4) SO 14013	ob33	322°34'00"	C		68.38 C		
IT II DP 18718	IP III DP 18718	ob21	135°31'00"	A DP 18718	-0°00'30"	104.57 A DP 18718		
IP III DP 18718	IT IV DP 18718	ob91	135°31'00"	A DP 18718	-0°00'30"	103.48 A DP 18718		
IT IV DP 18718	IT V DP 18718	ob96	12°04'00"	A DP 18718	-0°00'30"	90.08 A DP 18718		
IT V DP 18718	IT X DP 54597	ob97	20°44'20"	A DP 54597	-0°00'30"	100.29 A DP 54597		
IT III DP 54597	IT IV DP 18718	ob43	36°49'00"	A DP 54597	-0°00'30"	111.77 A DP 54597		
IT II DP 18718	IP I DP 18718	ob22	312°11'00"	A DP 18718	-0°00'30"	197.20 A DP 18718		

Mark and Vector

Survey Number SO 589817

Meridional Circuit Wanganui 2000

From	To	Code	Bearing	Adpt Surv	Bearing Correction	Distance	Adpt Surv	Class
IP I DP 18718	PEG (8) SO 14013	ob98	312°26'00"	A DP 18718	-0°00'30"	136.13 A	DP 18718	
PEG (8) SO 14013	PEG XIII SO 14013	ob99	311°44'30"	A SO 14013	-0°00'30"	16.15 A	SO 14013	
PEG XIII SO 14013	PEG XIV SO 14013	ob100	57°58'30"	A SO 14013	-0°00'30"	78.80 A	SO 14013	
PEG XIV SO 14013	PEG XV SO 14013	ob101	130°47'30"	A SO 14013	-0°00'30"	55.22 A	SO 14013	
PEG XV SO 14013	PEG XVI SO 14013	ob102	70°46'30"	A SO 14013	-0°00'30"	55.74 A	SO 14013	
PEG XVI SO 14013	PEG XVII SO 14013	ob103	85°51'30"	A SO 14013	-0°00'30"	49.57 A	SO 14013	
PEG XVII SO 14013	PEG XVIII SO 14013	ob104	17°07'30"	A SO 14013	-0°00'30"	139.51 A	SO 14013	
PEG XVIII SO 14013	PEG XIX SO 14013	ob105	96°37'30"	A SO 14013	-0°00'30"	85.30 A	SO 14013	
PEG XIX SO 14013	PEG XX SO 14013	ob110	114°07'30"	A SO 14013	-0°00'30"	53.89 A	SO 14013	
PEG XX SO 14013	PEG XXI SO 14013	ob111	45°00'30"	A SO 14013	-0°00'30"	43.75 A	SO 14013	
PEG XXI SO 14013	PEG XXII SO 14013	ob112	14°46'30"	A SO 14013	-0°00'30"	51.16 A	SO 14013	
PEG XXII SO 14013	PEG XXIII SO 14013	ob113	101°17'30"	A SO 14013	-0°00'30"	43.67 A	SO 14013	
PEG XXIII SO 14013	PEG XXIV SO 14013	ob114	111°00'30"	A SO 14013	-0°00'30"	83.55 A	SO 14013	
PEG XXIV SO 14013	PEG XXVII SO 14013	ob115	166°20'30"	A SO 14013	-0°00'30"	40.48 A	SO 14013	
IT III SO 589817	POST 19 SO 589817	ob118	313°18'30"	M		60.25 M		
IT III SO 589817	POST 20 SO 589817	ob119	356°49'00"	M		77.81 M		
IT III SO 589817	POST 21 SO 589817	ob120	16°53'00"	M		80.77 M		
IT III SO 589817	POST 22 SO 589817	ob121	19°17'30"	M		82.79 M		
IT III SO 589817	POST 23 SO 589817	ob122	25°42'30"	M		83.15 M		
POST 18 SO 589817	POST 19 SO 589817	ob87	40°10'00"	C		32.11 C		Class B
POST 19 SO 589817	POST 20 SO 589817	ob131	47°23'00"	C		53.71 C		Class B
POST 20 SO 589817	POST 21 SO 589817	ob132	90°50'00"	C		27.79 C		Class B
POST 21 SO 589817	POST 22 SO 589817	ob133	77°39'00"	C		3.99 C		Class B
POST 22 SO 589817	POST 23 SO 589817	ob134	110°16'00"	C		9.29 C		Class B

Mark and Vector

Survey Number SO 589817

Meridional Circuit Wanganui 2000

From	To	Code	Bearing	Adpt Surv	Bearing Correction	Distance	Adpt Surv	Class
IT IV SO 589817	PEG 24 SO 589817	ob127	19°02'00"	M		30.02 M		
POST 23 SO 589817	PEG 24 SO 589817	ob135	145°25'00"	C		49.97 C		Class B
PEG 24 SO 589817	PEG (11) DP 54597	ob136	168°40'00"	C		5.80 C		Class B
IT XI DP 54597	PEG 9 SO 589817	ob37	203°59'00"	M		6.78 M		
IT XI DP 54597	POST 8 SO 589817	ob38	173°38'00"	M		18.40 M		
IT X DP 54597	PEG 2 SO 589817	ob26	341°59'30"	M		65.53 M		
PEG 9 SO 589817	POST 8 SO 589817	ob138	158°23'00"	C		13.02 C		Class B
POST 8 SO 589817	PEG 2 SO 589817	ob139	167°24'30"	C		127.10 C		Class B
PEG 1 SO 589817	PEG 2 SO 589817	ob95	75°49'00"	C		4.64 C		Class B
IT I SO 589817	PEG 14 SO 589817	ob12	88°48'00"	M		25.78 M		
IT I SO 589817	POST 13 SO 589817	ob13	87°45'00"	M		28.69 M		
IT I SO 589817	PEG 12 SO 589817	ob14	108°16'00"	M		42.20 M		
PEG 14 SO 589817	POST 13 SO 589817	ob141	78°31'00"	C		2.90 C		Class B
POST 13 SO 589817	PEG 12 SO 589817	ob143	141°27'00"	C		18.33 C		Class B
IT XI DP 54597	PEG 6 SO 589817	ob39	173°07'00"	M		40.61 M		
IT XI DP 54597	IT V SO 589817	ob40	159°32'20"	M		46.93 M		
IT V SO 589817	IT VI SO 589817	ob77	169°39'10"	M		58.55 M		
IT VI SO 589817	IT VII SO 589817	ob128	174°23'20"	M		38.84 M		
IT VII SO 589817	IT X DP 54597	ob145	163°19'40"	M		67.23 M		
IT XI DP 54597	PEG 11 SO 589817	ob41	31°40'00"	M		23.07 M		
IT V SO 589817	PEG 7 SO 589817	ob78	49°06'00"	M		10.98 M		
IT V SO 589817	PEG 6 SO 589817	ob79	287°40'00"	M		12.10 M		
IT VI SO 589817	PEG 4 SO 589817	ob129	244°15'00"	M		14.52 M		
IT VI SO 589817	PEG 5 SO 589817	ob130	105°50'00"	M		6.89 M		
IT VII SO 589817	PEG 1 SO 589817	ob146	239°35'00"	M		6.35 M		

Mark and Vector

Survey Number SO 589817

Meridional Circuit Wanganui 2000

From	To	Code	Bearing	Adpt Surv	Bearing Correction	Distance	Adpt Surv	Class
IT VII SO 589817	PEG 2 SO 589817	ob147	205°02'00"	M		2.30 M		
IT VII SO 589817	PEG 3 SO 589817	ob148	83°00'00"	M		14.17 M		
PEG 2 SO 589817	PEG 3 SO 589817	ob140	75°49'00"	C		15.51 C		Class B
PEG XIX SO 14013	PEG 6 SO 589817	ob64	259°55'30"	C		10.07 C		
PEG XIX SO 14013	PEG 7 SO 589817	ob65	79°55'30"	C		10.07 C		
PEG XX SO 14013	PEG 11 SO 589817	ob68	79°43'00"	C		10.07 C		
IT III SO 589817	PEG XXVI SO 589817	ob123	27°24'00"	M		44.22 M		
PEG XXVI SO 589817	PEG XXVI SO 14013	ob149	286°21'00"	C		0.19 C		
PEG 10 SO 589817	PEG 9 SO 589817	ob90	167°24'30"	A SO 14013	-0°00'30"	22.76 C		Class B
PEG 14 SO 589817	PEG 12 SO 589817	ob142	133°56'00"	C		19.82 C		Class B
PEG 15 SO 589817	PEG 14 SO 589817	ob89	133°56'00"	C		5.79 C		Class B
IT II DP 18718	IT II DP 54597	ob23	98°54'50"	A DP 54597	-0°00'30"	296.49 A DP 54597		
PEG XXVII SO 14013	PEG XXVI SO 14013	ob116	271°28'30"	A SO 14013	-0°00'30"	80.55 A SO 14013		

Mark Name	Mark Condition	Description
IT I SO 589817		Down 0.3
IT II SO 589817		Down 0.3
IT III SO 589817		Down 0.3
IT IV SO 589817		Down 0.3
IT VI SO 589817		Down 0.1
IT VII SO 589817		Down 0.2
IT XI DP 54597		Down 0.1
PEG XXVI SO 589817		Peg remains found up hill, possibly Peg XXVI SO 14013
PEG XIX SO 14013	Searched For and Not Found	
PEG XVIII SO 14013	Searched For and Not Found	
PEG XX SO 14013	Searched For and Not Found	
PEG XXI SO 14013	Searched For and Not Found	
PEG XXII SO 14013	Searched For and Not Found	
PEG XXIII SO 14013	Searched For and Not Found	Position in Dam
PEG XXIV SO 14013	Searched For and Not Found	



Mark and Vector

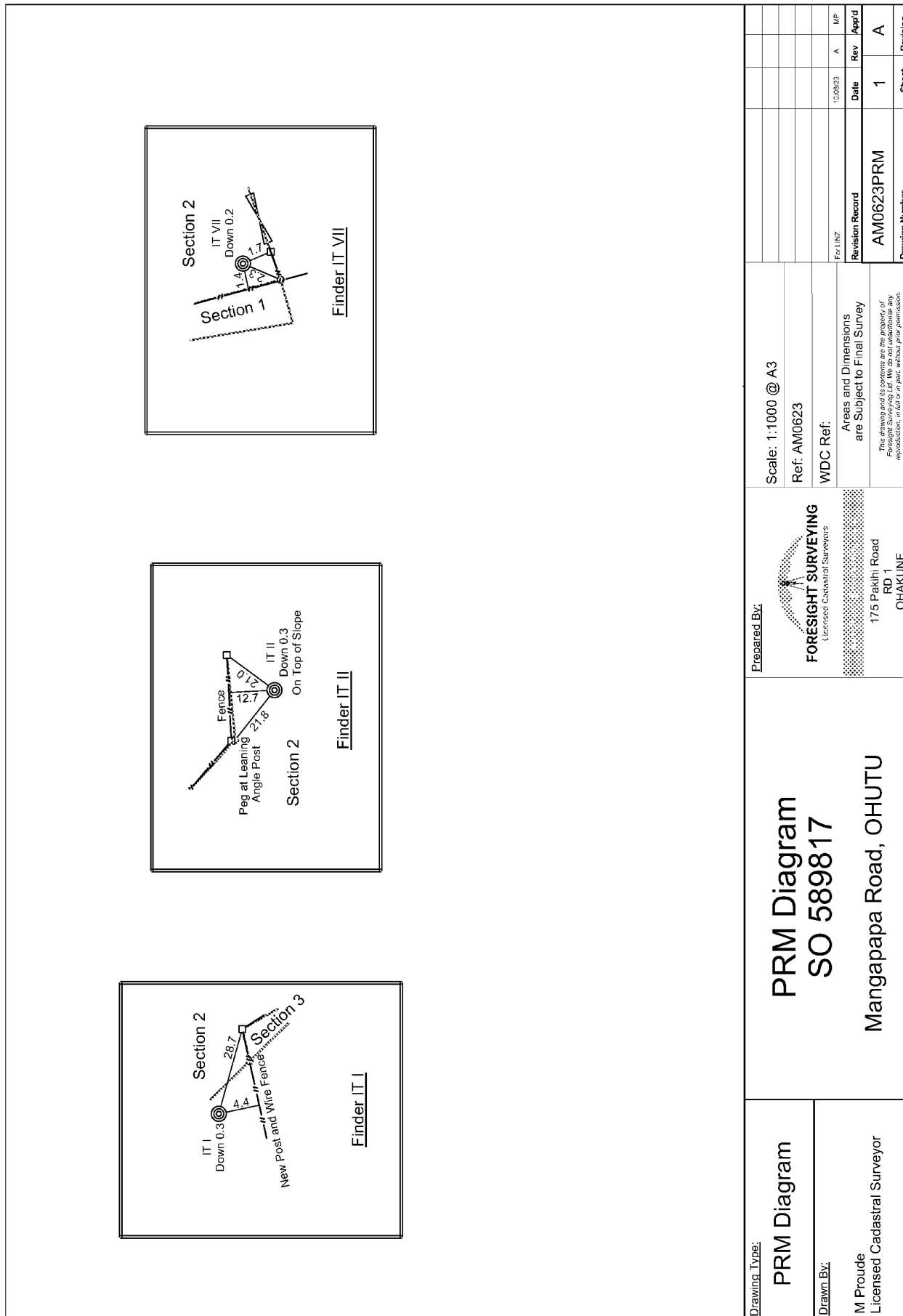
Survey Number SO 589817
Meridional Circuit Wanganui 2000

Mark Name	Mark Condition	Description
PEG XXV SO 14013	Searched For and Not Found	

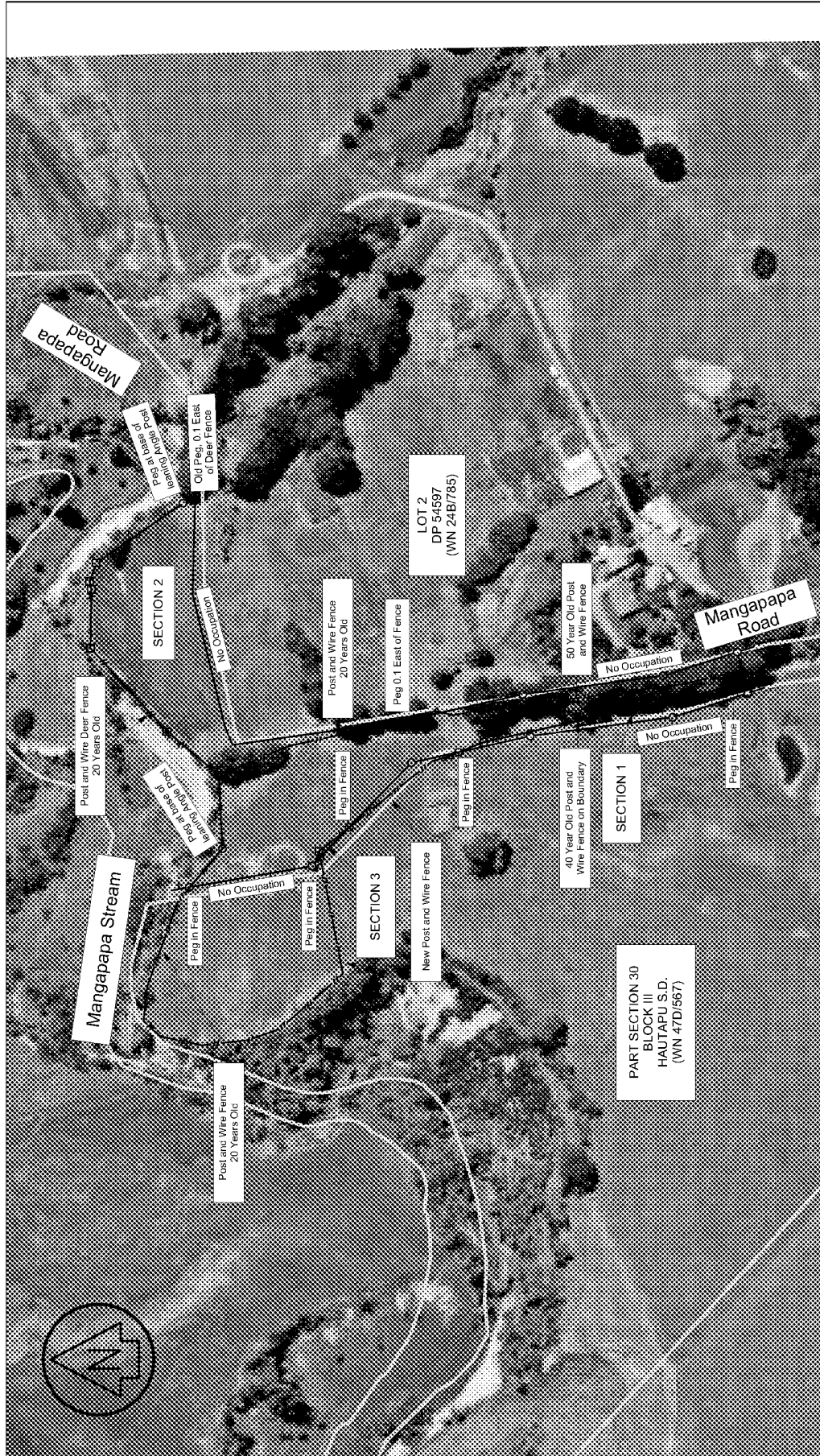
*** End of Report ***

LAND REGISTRATION DISTRICT: WELLINGTON
TERRITORIAL AUTHORITY: RANGITIKEI DISTRICT COUNCIL
PLAN NUMBER: SO 589817

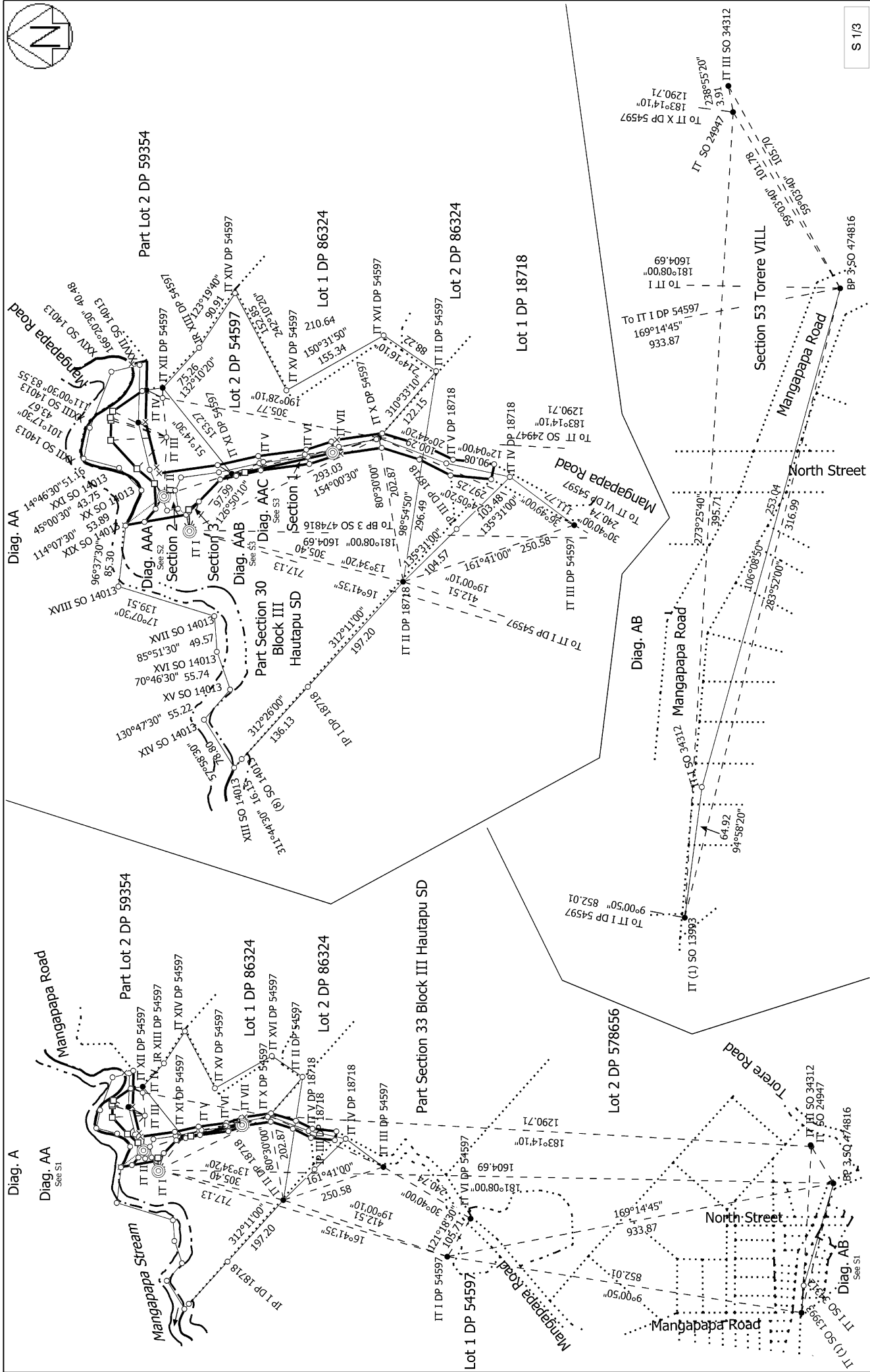
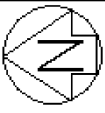
ROAD TO BE STOPPED			
SHOWN	ADJOINING	RECORD OF TITLE	AREA
Section 1	Part Section 30 Block III Hautapu S.D	WN 47D/567	0.0634Ha
Section 2	Lot 2 DP 54597	WN 24B/785	1.2090 Ha
Section 3	Part Section 30 Block III Hautapu S.D	WN 47D/567	0.0024Ha



Drawing Type: PRM Diagram	Scale: 1:1000 @ A3 Ref: AM0623 WDC Ref:		Prepared By: FORESIGHT SURVEYING Licensed Cadastral Surveyors 175 Pakihi Road RD 1 OHAKUNE	Date: 10/08/23	Rev: A	MP
	Areas and Dimensions are Subject to Final Survey			Revision Record AM0623PRM	Sheet: 1	Rev: A
Drawn By: M Proude Licensed Cadastral Surveyor	This drawing and its contents are the property of Foresight Surveying. No part may be reproduced, in full or in part, without prior permission.					



OCC Diagram Drawing Type	Prepared By: FORESIGHT SURVEYING Licensed Cadastral Surveyors 175 Pakihi Road RD 1 OHAKUNE		Scale: 1:1750 @ A3 Ref: AM0623 RDC Ref: Areas and Dimensions are Subject to Final Survey <small>This drawing and its contents are the property of Foresight Surveying and shall not be reproduced, in full or in part, without prior permission.</small>	For LINZ: 14/08/23 B, MP For Client: 15/08/23 A, MP Revision Record: AM0623OCC Date: 1 Rev: B App'd:
	Drawing Number:		Sheet:	Revision:



S 1/3

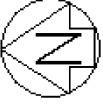
Land District: Wellington

Digitally Generated Plan
Generated on: 02/10/2023 2:17pm Page 12 of 15

Sections 1 - 3

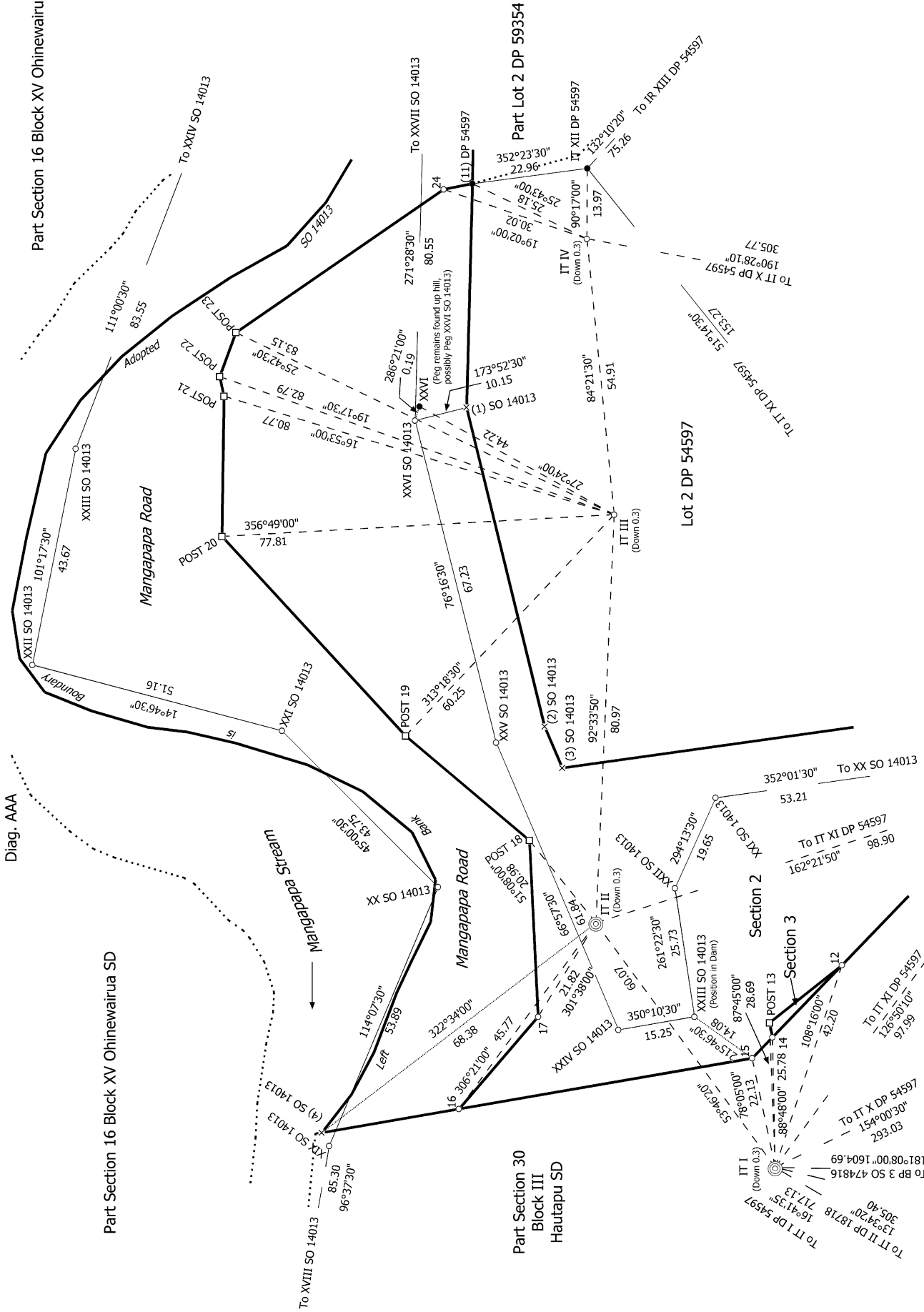
Surveyor: Michael Philip Proude
Firm: Foresight Surveying Limited
Date of Survey: 13/06/2023

Record of Survey
SO 589817
Approved on: 21/10/2023



Part Section 16 Block XV Ohinewairua SD

Part Section 16 Block XV Ohinewairua SD



Land District: Wellington

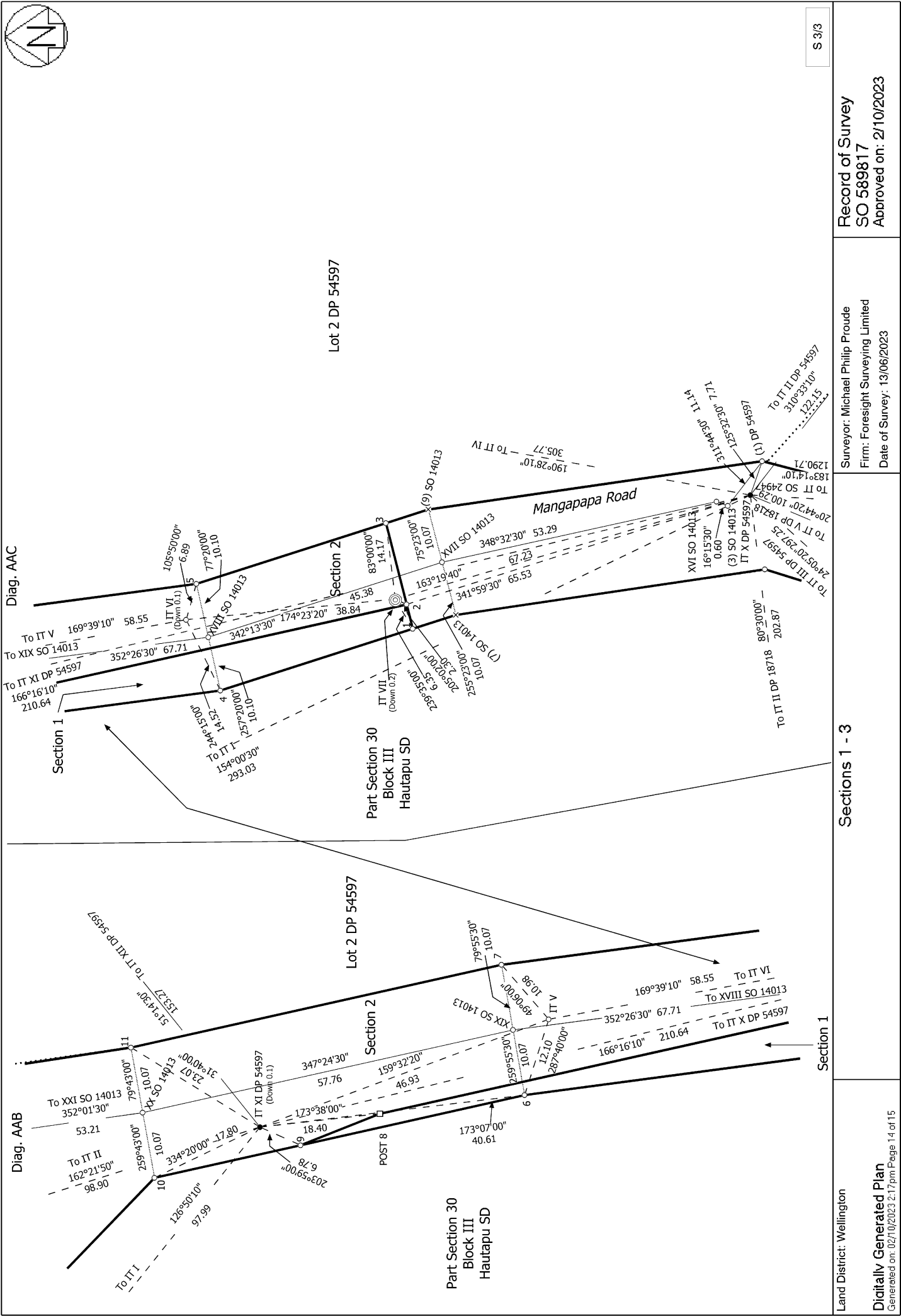
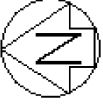
Digitally Generated Plan

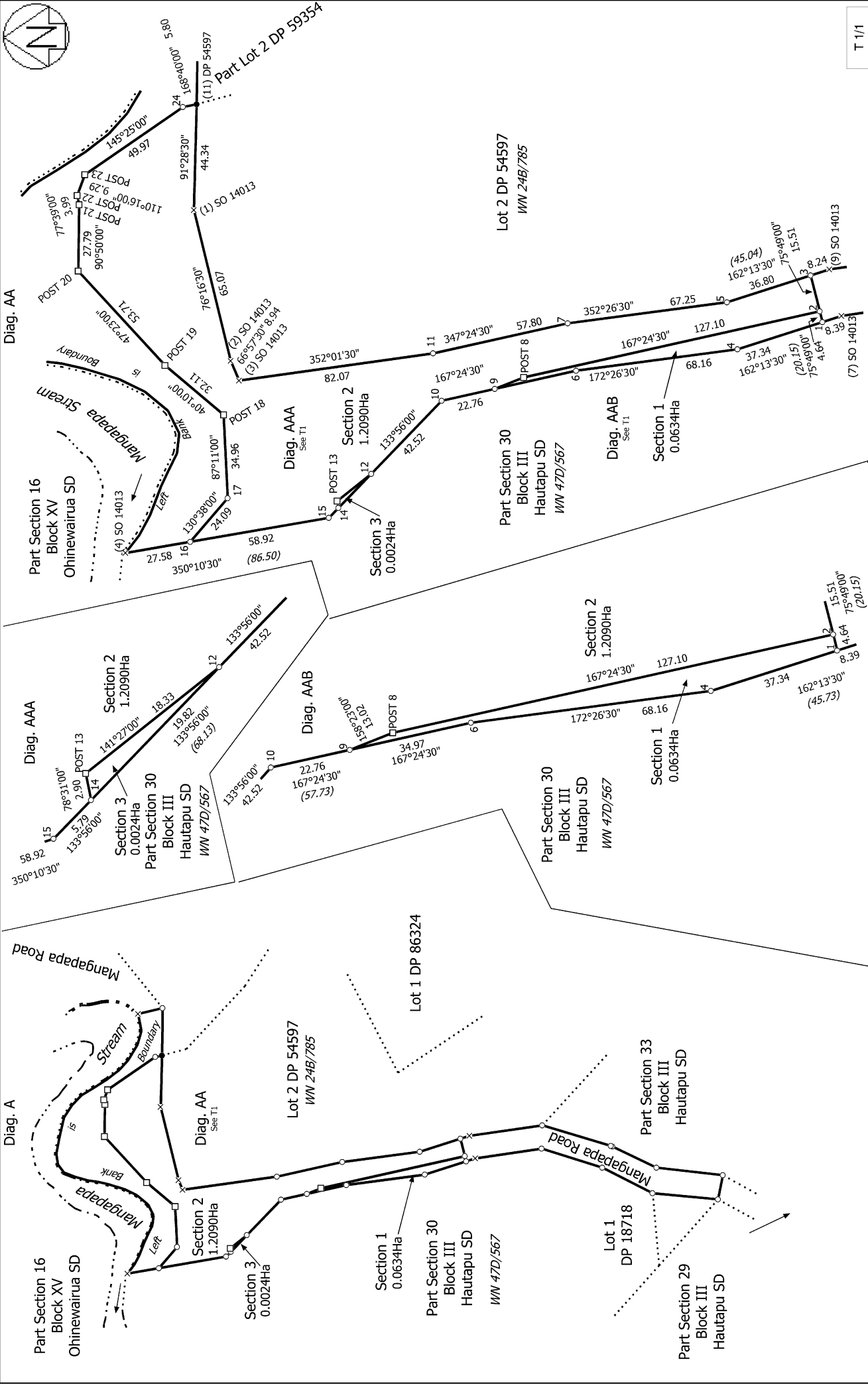
Generated on: 02/10/2023 2:17pm Page 13 of 15

Sections 1 - 3

Surveyor: Michael Philip Proude
Firm: Foresight Surveying Limited
Date of Survey: 13/06/2023

Record of Survey
SO 589817
Approved on: 21/10/2023





T 1/1

Record of Survey
SO 589817
Approved on: 21/10/2023

Surveyor: Michael Philip Proudle
Firm: Foresight Surveying Limited
Date of Survey: 13/06/2023

Sections 1 - 3

Land District: Wellington
Digitally Generated Plan
Generated on: 02/10/2023 2:17pm Page 15 of 15