



Record of Survey - SO 588048

Survey Number SO 588048
Surveyor Reference 3336760/200 Waipapa Bay
Surveyor Vicki Leigh Webster
Survey Firm Beca Limited
Surveyor Declaration I Vicki Leigh Webster, being a licensed cadastral surveyor, certify that--
 (a) this dataset provided by me and its related survey are accurate, correct and in accordance with the Cadastral Survey Act 2002 and Cadastral Survey Rules 2021; and
 (b) the survey was undertaken by me or under my personal direction.
 Declared on 20 Dec 2023 10:00 AM

Survey Details

Dataset Description	Sections 1 - 16		
Purpose	Legalisation		
Status	Approved as to Survey	Type	Survey
Land District	Marlborough	Survey Class	Class B
Meridional Circuit	Marlborough 2000	Vertical Datum	None

Survey Dates

Surveyed Date	23/03/2023	Certified Date	20/12/2023
Submitted Date	20/12/2023 10:00:06	Survey Approval Date	03/01/2024
Deposit Date			

Referenced Surveys

Survey Number	Land District	Bearing Correction
DP 9890	Marlborough	0°00'00"
SO 3706/E	Marlborough	0°00'00"
SO 425516	Marlborough	0°00'00"

Territorial Authorities

Kaikoura District

Comprised In

GN 1942 p2530
 GN 1951 p165
 RT MB5D/342
 RT 24332

Created Parcels

Parcels	Parcel Intent	Area	RT Reference
Section 1 Survey Office Plan 588048	Legalisation	0.7618 Ha	
Section 2 Survey Office Plan 588048	Legalisation	0.0053 Ha	
Section 3 Survey Office Plan 588048	Legalisation	0.0446 Ha	
Section 4 Survey Office Plan 588048	Legalisation	0.0075 Ha	
Section 5 Survey Office Plan 588048	Legalisation	0.0208 Ha	
Section 6 Survey Office Plan 588048	Legalisation	0.7262 Ha	



Record of Survey - SO 588048

Created Parcels

Parcels	Parcel Intent	Area	RT Reference
Section 7 Survey Office Plan 588048	Legalisation	0.1831 Ha	
Section 8 Survey Office Plan 588048	Legalisation	0.1194 Ha	
Section 9 Survey Office Plan 588048	Fee Simple Title	0.0088 Ha	
Section 10 Survey Office Plan 588048	Fee Simple Title	0.2126 Ha	
Section 11 Survey Office Plan 588048	Fee Simple Title	0.3893 Ha	
Section 12 Survey Office Plan 588048	Fee Simple Title	0.0020 Ha	
Section 13 Survey Office Plan 588048	Fee Simple Title	0.0977 Ha	
Section 14 Survey Office Plan 588048	Fee Simple Title	1.1788 Ha	
Crown Land	Residue Parcel		
Crown Land	Residue Parcel		
Crown Land	Residue Parcel		
	Railway		
	Railway		
	Railway		
	Road		
Crown Land	Residue Parcel		
	Railway		
Section 15 Survey Office Plan 588048	Legalisation	0.0442 Ha	
Section 16 Survey Office Plan 588048	Legalisation	0.0087 Ha	
Crown Land	Residue Parcel		
Crown Land	Residue Parcel		
Total Area		<hr/> 3.8108 Ha	

Mark and Vector

Survey Number SO 588048
 Meridional Circuit Marlborough 2000

From	To	Code	Bearing	Adpt Surv	Bearing Correction	Distance	Adpt Surv	Class
T (Puhipuhi SD)	IS 1 WAINUI	ob0	18°17'30" M			2,084.35 M		
T (Puhipuhi SD)	IT SO 3706/F	ob1	35°25'00" M			480.98 M		
IT SO 3706/F	IT 3 SO 425516	ob4	2°50'00" M			149.42 M		
IT 3 SO 425516	IT I SO 3706/E	ob5	13°33'00" M			1,363.07 M		
IT I SO 3706/E	IS 1 WAINUI	ob36	23°21'40" M			122.77 M		
T (Puhipuhi SD)	WAIPAPA BOAT COMPOUND	ob2	28°34'05" M			1,271.70 M		
WAIPAPA BOAT COMPOUND	IS 1 WAINUI	ob16	3°03'25" M			863.39 M		
T (Puhipuhi SD)	IS 1 WAIPAPA BAY	ob3	19°19'50" M			919.26 M		
IS 1 WAIPAPA BAY	WAIPAPA BOAT COMPOUND	ob96	50°37'00" M			393.10 M		
IT 3 SO 425516	IT 4 SO 425516	ob6	16°48'50" C			486.53 C		
IT 4 SO 425516	RA 77	ob76	22°50'40" C			94.39 C		
RA 77	IT XII SO 5551	ob78	81°18'20" C			156.58 C		
IT XII SO 5551	IT XI SO 5551	ob80	356°31'20" C			443.25 C		
IT XI SO 5551	IS XIX DP 9890	ob82	7°15'20" C			340.60 C		
IS XIX DP 9890	IT I SO 3706/E	ob85	222°29'00" C			42.82 C		
IT I SO 3706/E	IT II SO 3706/E	ob37	178°56'40" C			70.25 C		
IT II SO 3706/E	IS III SO 3706/E	ob207	178°56'40" C			213.12 C		
IS III SO 3706/E	IS IV SO 3706/E	ob208	178°56'40" C			162.28 C		
IS IV SO 3706/E	IT V SO 3706/E	ob209	178°56'40" C			75.45 C		
IT V SO 3706/E	IP SO 3706/E	ob210	178°56'40" C			104.05 C		
IP SO 3706/E	IS X SO 3706/E	ob136	220°36'50" C			314.66 C		
IS X SO 3706/E	IT XI SO 3706/E	ob145	220°36'50" C			208.45 C		
IT XI SO 3706/E	IT I SO 3706/F	ob137	179°42'50" C			416.18 C		
IT I SO 3706/F	IT SO 3706/F	ob139	179°43'00" C			36.01 C		
IT XI SO 3706/E	PEG (21) SO 3706/E	ob138	29°00'00" A	SO 3706/E	0°00'00"	160.39 A	SO 3706/E	Class B
PEG (21) SO 3706/E	IT SO 3706/E	ob141	145°47'00" A	SO 3706/E	0°00'00"	24.14 A	SO 3706/E	
IT SO 3706/E	CTP I SO 3706/E	ob142	145°47'00" A	SO 3706/E	0°00'00"	10.50 A	SO 3706/E	
CTP I SO 3706/E	PEG (22) SO 3706/E	ob143	16°08'00" A	SO 3706/E	0°00'00"	9.01 A	SO 3706/E	
PEG (22) SO 3706/E	UNMK 1000 SO 588048	ob144	37°47'00" A	SO 3706/E	0°00'00"	50.41 C		Class B
UNMK 1000 SO 588048	PEG (20) SO 3706/E	ob146	37°47'00" A	SO 3706/E	0°00'00"	5.33 C		Class B
PEG (20) SO 3706/E	IS X SO 3706/E	ob148	165°14'00" A	SO 3706/E	0°00'00"	6.25 A	SO 3706/E	

Mark and Vector

Survey Number SO 588048

Meridional Circuit Marlborough 2000

From	To	Code	Bearing	Adpt Surv	Bearing Correction	Distance	Adpt Surv	Class
PEG (20) SO 3706/E	PEG (19) SO 3706/E	ob149	40°45'20"	A SO 3706/E	0°00'00"	174.90 A	SO 3706/E	Class B
PEG (19) SO 3706/E	PEG (18) SO 3706/E	ob196	35°01'30"	A SO 3706/E	0°00'00"	40.23 A	SO 3706/E	Class B
PEG (18) SO 3706/E	PEG (17) SO 3706/E	ob197	29°41'00"	A SO 3706/E	0°00'00"	40.27 A	SO 3706/E	Class B
PEG (17) SO 3706/E	PEG (16) SO 3706/E	ob198	23°50'00"	A SO 3706/E	0°00'00"	40.27 A	SO 3706/E	Class B
PEG (16) SO 3706/E	PEG (15) SO 3706/E	ob199	17°47'00"	A SO 3706/E	0°00'00"	40.18 A	SO 3706/E	Class B
PEG (15) SO 3706/E	PEG (14) SO 3706/E	ob200	12°02'00"	A SO 3706/E	0°00'00"	40.25 A	SO 3706/E	Class B
PEG (14) SO 3706/E	PEG (11) SO 3706/E	ob201	6°14'00"	A SO 3706/E	0°00'00"	39.81 A	SO 3706/E	Class B
PEG (11) SO 3706/E	PEG (12) SO 3706/E	ob202	1°22'00"	A SO 3706/E	0°00'00"	41.23 A	SO 3706/E	Class B
PEG (12) SO 3706/E	PEG (13) SO 3706/E	ob203	358°33'00"	A SO 3706/E	0°00'00"	73.73 A	SO 3706/E	Class B
PEG (13) SO 3706/E	PEG (4) SO 3706/E	ob204	357°57'00"	A SO 3706/E	0°00'00"	108.70 A	SO 3706/E	Class B
PEG (4) SO 3706/E	IS III SO 3706/E	ob205	119°15'00"	A SO 3706/E	0°00'00"	6.63 A	SO 3706/E	
IT 4 SO 425516	PEG (3) DP 9890	ob77	60°54'00"	A SO 425516	0°00'00"	5.25 A	SO 425516	
PEG (3) DP 9890	RA 77	ob38	20°44'00"	A DP 9890	0°00'00"	90.31 A	DP 9890	
IT XII SO 5551	PEG (7) DP 9890	ob81	341°10'00"	A DP 9890	0°00'00"	90.80 A	DP 9890	
PEG (7) DP 9890	PEG 7 SO 588048	ob41	265°37'00"	A DP 9890	0°00'00"	2.15 C		Class B
PEG 7 SO 588048	PEG (6) DP 9890	ob123	265°37'00"	A DP 9890	0°00'00"	4.04 C		Class B
PEG (6) DP 9890	PEG 32 SO 588048	ob42	210°41'00"	A DP 9890	0°00'00"	42.21 C		Class B
PEG 32 SO 588048	PEG (8) DP 9890	ob134	210°41'00"	A DP 9890	0°00'00"	20.82 C		Class B
PEG (8) DP 9890	PEG 16 SO 588048	ob43	220°18'00"	A DP 9890	0°00'00"	61.70 C		Class B
PEG 16 SO 588048	PEG (4) DP 9890	ob128	220°18'00"	A DP 9890	0°00'00"	16.15 C		Class B
PEG (4) DP 9890	PEG (3) DP 9890	ob44	220°36'00"	A DP 9890	0°00'00"	105.44 A	DP 9890	Class B
PEG (3) DP 9890	PEG (2) DP 9890	ob39	137°48'00"	A DP 9890	0°00'00"	8.90 A	DP 9890	Class B
PEG (2) DP 9890	RA 77	ob45	15°56'00"	A DP 9890	0°00'00"	94.69 A	DP 9890	
PEG (2) DP 9890	UNMK (21) DP 9890	ob46	137°48'00"	A DP 9890	0°00'00"	8.90 A	DP 9890	Class B
UNMK (21) DP 9890	UNMK (33) DP 9890	ob47	35°45'50"	C		255.78 C		
UNMK (33) DP 9890	PEG (7) DP 9890	ob49	265°37'00"	A DP 9890	0°00'00"	4.00 A	DP 9890	Class B

Mark and Vector

Survey Number SO 588048

Meridional Circuit Marlborough 2000

From	To	Code	Bearing	Adpt Surv	Bearing Correction	Distance	Adpt Surv	Class
UNMK (33) DP 9890	UNMK (8) DP 9890	ob50	85°37'00"	A DP 9890	0°00'00"	8.00 A	DP 9890	Class B
UNMK (8) DP 9890	IT XII SO 5551	ob54	168°40'00"	C		88.60 C		
IT XI SO 5551	PEG (5) DP 9890	ob83	35°57'00"	A DP 9890	0°00'00"	69.74 A	DP 9890	
PEG (5) DP 9890	PEG (1) DP 9890	ob69	2°39'40"	A DP 9890	0°00'00"	191.19 A	DP 9890	
PEG (1) DP 9890	IS XIX DP 9890	ob71	355°31'00"	A DP 9890	0°00'00"	90.80 A	DP 9890	
PEG (5) DP 9890	UNMK (10) SO 3706/E	ob70	90°00'00"	A DP 9890	0°00'00"	22.13 A	SO 3706/E	
UNMK (10) SO 3706/E	UNMK 1008 SO 588048	ob72	90°00'00"	A DP 9890	0°00'00"	8.59 C		Class BD
UNMK (33) DP 9890	IS 34 SO 588048	ob51	179°47'00"	C		10.79 C		Class B
IS 34 SO 588048	UNMK 1050 SO 588048	ob129	179°47'00"	C		6.75 C		Class B
UNMK 1050 SO 588048	PEG 35 SO 588048	ob52	141°08'20"	C		10.97 C		Class B
PEG 35 SO 588048	UNMK 1049 SO 588048	ob126	141°08'20"	C		47.21 C		Class B
UNMK 1049 SO 588048	UNMK 1048 SO 588048	ob53	164°44'00"	C		19.23 C		Class B
UNMK 1048 SO 588048	UNMK 1047 SO 588048	ob55	178°51'00"	C		25.47 C		Class B
UNMK 1047 SO 588048	UNMK 1046 SO 588048	ob56	189°53'00"	C		12.77 C		Class B
UNMK 1046 SO 588048	UNMK 1059 SO 588048	ob57	209°55'00"	C		12.57 C		Class B
UNMK 1059 SO 588048	UNMK 1020 SO 588048	ob58	218°55'00"	C		10.97 C		Class BD
UNMK 1020 SO 588048	UNMK 1045 SO 588048	ob190	218°55'00"	C		0.88 C		Class BD
UNMK 1045 SO 588048	UNMK 1044 SO 588048	ob59	235°25'00"	C		3.34 C		Class B
UNMK 1044 SO 588048	UNMK 1043 SO 588048	ob60	259°23'00"	C		0.54 C		Class B
UNMK 1043 SO 588048	UNMK 1042 SO 588048	ob61	291°58'00"	C		0.91 C		Class BD
UNMK 1042 SO 588048	UNMK 1041 SO 588048	ob62	312°57'00"	C		10.76 C		Class BD
UNMK 1041 SO 588048	UNMK 1040 SO 588048	ob63	292°18'00"	C		19.81 C		Class B
UNMK 1040 SO 588048	UNMK 1039 SO 588048	ob64	260°13'00"	C		45.07 C		Class B
UNMK 1039 SO 588048	UNMK 1038 SO 588048	ob65	252°17'00"	C		21.96 C		Class B
UNMK 1038 SO 588048	UNMK 1037 SO 588048	ob66	243°40'00"	C		21.95 C		Class B

Mark and Vector

Survey Number SO 588048

Meridional Circuit Marlborough 2000

From	To	Code	Bearing	Adpt Surv	Bearing Correction	Distance	Adpt Surv	Class
UNMK 1037 SO 588048	UNMK 1036 SO 588048	ob67	232°53'00"	C		21.60 C		Class B
UNMK 1036 SO 588048	UNMK (21) DP 9890	ob68	224°15'40"	C		61.62 C		Class B
UNMK (10) SO 3706/E	UNMK 1014 SO 588048	ob73	174°57'00"	C		20.68 C		Class BD
UNMK 1014 SO 588048	UNMK 1051 SO 588048	ob187	174°57'00"	C		3.68 C		Class BD
UNMK 1051 SO 588048	UNMK 1052 SO 588048	ob74	179°07'00"	C		45.07 C		Class B
UNMK 1052 SO 588048	PEG 28 SO 588048	ob86	184°49'00"	C		36.16 C		Class B
PEG 28 SO 588048	UNMK 1053 SO 588048	ob100	184°49'00"	C		12.89 C		Class B
UNMK 1053 SO 588048	UNMK 1054 SO 588048	ob87	190°43'00"	C		11.87 C		Class B
UNMK 1054 SO 588048	UNMK 1015 SO 588048	ob88	198°17'40"	C		32.33 C		Class BD
UNMK 1015 SO 588048	UNMK 1061 SO 588048	ob188	198°17'40"	C		32.88 C		Class BD
UNMK 1061 SO 588048	PEG 26 SO 588048	ob89	181°49'00"	C		14.78 C		Class B
PEG 26 SO 588048	UNMK 1060 SO 588048	ob112	181°49'00"	C		17.05 C		Class B
UNMK 1060 SO 588048	UNMK 1055 SO 588048	ob90	177°22'00"	C		32.90 C		Class B
UNMK 1055 SO 588048	UNMK 1056 SO 588048	ob91	183°05'00"	C		25.40 C		Class B
UNMK 1056 SO 588048	UNMK 1057 SO 588048	ob92	194°14'00"	C		20.68 C		Class B
UNMK 1057 SO 588048	UNMK 1058 SO 588048	ob94	199°22'20"	C		68.82 C		Class B
UNMK 1058 SO 588048	PEG 33 SO 588048	ob95	181°08'00"	C		18.52 C		Class B
PEG 33 SO 588048	UNMK (8) DP 9890	ob115	181°08'00"	C		26.69 C		Class B
PEG 28 SO 588048	PEG 29 SO 588048	ob101	168°39'00"	C		23.97 C		Class BD
PEG 29 SO 588048	UNMK 1003 SO 588048	ob103	166°11'00"	C		11.34 C		Class BD
UNMK 1003 SO 588048	UNMK 1004 SO 588048	ob104	171°57'00"	C		49.26 C		Class B
UNMK 1004 SO 588048	UNMK 1005 SO 588048	ob105	179°23'40"	C		52.34 C		Class B
UNMK 1005 SO 588048	UNMK 1006 SO 588048	ob106	187°40'00"	C		76.74 C		Class B
UNMK 1006 SO 588048	UNMK 1007 SO 588048	ob107	200°01'20"	C		76.12 C		Class B

Mark and Vector

Survey Number SO 588048

Meridional Circuit Marlborough 2000

From	To	Code	Bearing	Adpt Surv	Bearing Correction	Distance	Adpt Surv	Class
UNMK 1007 SO 588048	PEG 11 SO 588048	ob108	206°20'00"	C		35.41 C		Class B
PEG 11 SO 588048	IS 30 SO 588048	ob109	233°35'00"	C		5.18 C		Class BD
IS 30 SO 588048	WAIPAPA BOAT COMPOUND	ob110	183°41'20"	M		76.39 M		
PEG 26 SO 588048	PEG 2 SO 588048	ob113	176°28'00"	C		6.22 C		Class B
PEG 2 SO 588048	PEG 3 SO 588048	ob117	178°16'00"	C		43.64 C		Class B
PEG 3 SO 588048	UNMK 1056 SO 588048	ob118	184°43'00"	C		25.54 C		Class B
UNMK 1056 SO 588048	PEG 4 SO 588048	ob93	186°54'00"	C		19.02 C		Class B
PEG 4 SO 588048	PEG 5 SO 588048	ob119	194°03'00"	C		45.17 C		Class B
PEG 5 SO 588048	PEG 6 SO 588048	ob120	199°21'00"	C		38.07 C		Class B
PEG 6 SO 588048	PEG 33 SO 588048	ob121	206°24'00"	C		5.44 C		Class B
PEG 33 SO 588048	PEG 25 SO 588048	ob116	206°27'00"	C		1.82 C		Class B
PEG 25 SO 588048	PEG 7 SO 588048	ob125	207°52'00"	C		29.56 C		Class B
IS 30 SO 588048	PEG 23 SO 588048	ob111	220°45'00"	C		16.41 C		Class BD
PEG 23 SO 588048	PEG 35 SO 588048	ob127	220°45'00"	C		3.81 C		Class B
IS 34 SO 588048	PEG 12 SO 588048	ob130	210°24'00"	C		15.30 C		Class B
PEG 12 SO 588048	PEG 13 SO 588048	ob131	196°33'00"	C		10.30 C		Class B
PEG 13 SO 588048	PEG 14 SO 588048	ob132	223°53'00"	C		98.50 C		Class B
PEG 14 SO 588048	PEG 16 SO 588048	ob133	309°54'00"	C		4.42 C		Class B
PEG 7 SO 588048	PEG 8 SO 588048	ob124	214°38'00"	C		43.09 C		Class B
PEG 8 SO 588048	PEG 32 SO 588048	ob135	224°02'00"	C		1.59 C		Class B
UNMK 1000 SO 588048	UNMK 1001 SO 588048	ob147	41°44'00"	C		85.66 C		Class B
UNMK 1001 SO 588048	PEG 10 SO 588048	ob150	43°19'00"	C		24.91 C		Class B
PEG 10 SO 588048	IS 9 SO 588048	ob151	45°26'40"	C		70.17 C		Class B
IS 9 SO 588048	IS 31 SO 588048	ob152	43°34'00"	C		41.43 C		Class B

Mark and Vector

Survey Number SO 588048

Meridional Circuit Marlborough 2000

From	To	Code	Bearing	Adpt Surv	Bearing Correction	Distance	Adpt Surv	Class
IS 31 SO 588048	PEG 32 SO 588048	ob153	43°53'00"	C		1.74 C		Class B
PEG 26 SO 588048	IS 1 SO 588048	ob114	351°52'20"	C		108.47 C		Class B
IS 1 SO 588048	IS 27 SO 588048	ob154	355°39'50"	C		72.03 C		Class B
IS 27 SO 588048	UNMK (10) SO 3706/E	ob155	58°49'30"	C		52.85 C		Class B
PEG (3) DP 9890	PEG 18 SO 588048	ob40	19°14'00"	C		7.37 C		
PEG 18 SO 588048	PEG 19 SO 588048	ob156	39°44'30"	C		78.84 C		
PEG 19 SO 588048	PEG 16 SO 588048	ob157	46°44'00"	C		36.13 C		
IT I SO 3706/F	IS XII SO 3706/E	ob140	359°42'50"	C		207.84 C		
IS XII SO 3706/E	IS V SO 3706/E	ob158	0°08'00"	C		39.08 C		
IS V SO 3706/E	PEG LXXIII SO 678	ob167	355°37'00"	C		50.21 C		
PEG LXXIII SO 678	UNMK 1009 SO 588048	ob159	271°35'30"	C		1.25 C		Class B
UNMK 1009 SO 588048	IT Ref SO 3706/E	ob162	271°35'30"	C		10.54 C		
IT Ref SO 3706/E	PEG LXXIIIB SO 678	ob182	271°35'30"	C		7.14 C		
PEG LXXIIIB SO 678	PEG (29) SO 3706/E	ob164	271°35'30"	C		5.26 C		
PEG (29) SO 3706/E	IT XI SO 3706/E	ob168	12°47'00"	C		121.55 C		Class B
PEG LXXIII SO 678	UNMK (2) SO 3706/E	ob160	91°36'30"	A	SO 3706/E	0°00'00"	18.11 A SO 3706/E	Class B
UNMK (2) SO 3706/E	UNMK 1027 SO 588048	ob176	91°36'30"	A	SO 3706/E	0°00'00"	18.28 C	Class BD
UNMK (21) DP 9890	UNMK 1035 SO 588048	ob48	231°10'00"	C		37.92 C		Class B
UNMK 1035 SO 588048	UNMK 1034 SO 588048	ob166	219°17'00"	C		35.19 C		Class B
UNMK 1034 SO 588048	UNMK 1023 SO 588048	ob170	185°20'00"	C		24.95 C		Class BD
UNMK 1023 SO 588048	UNMK 1033 SO 588048	ob191	185°20'00"	C		2.91 C		Class BD
UNMK 1033 SO 588048	UNMK 1024 SO 588048	ob171	189°46'00"	C		6.62 C		Class BD
UNMK 1024 SO 588048	UNMK 1025 SO 588048	ob192	189°46'00"	C		30.10 C		Class BD
UNMK 1025 SO 588048	UNMK 1032 SO 588048	ob193	189°46'00"	C		2.09 C		Class BD

Mark and Vector

Survey Number SO 588048

Meridional Circuit Marlborough 2000

From	To	Code	Bearing	Adpt Surv	Bearing Correction	Distance	Adpt Surv	Class
UNMK 1032 SO 588048	UNMK 1031 SO 588048	ob169	194°49'00"	C		32.96 C		Class B
UNMK 1031 SO 588048	UNMK 1029 SO 588048	ob172	215°26'00"	C		14.31 C		Class B
UNMK 1029 SO 588048	UNMK 1026 SO 588048	ob173	230°29'00"	C		11.09 C		Class BD
UNMK 1026 SO 588048	UNMK 1030 SO 588048	ob194	230°29'00"	C		27.64 C		Class BD
UNMK 1030 SO 588048	UNMK 1028 SO 588048	ob174	215°57'00"	C		40.29 C		Class B
UNMK 1028 SO 588048	UNMK (2) SO 3706/E	ob175	200°34'40"	C		57.75 C		Class B
PEG LXXIII SO 678	PEG (28) SO 3706/E	ob161	11°25'00"	A SO 3706/E	0°00'00"	47.54 A SO 3706/E		Class B
PEG (28) SO 3706/E	PEG (27) SO 3706/E	ob165	16°37'00"	A SO 3706/E	0°00'00"	48.18 A SO 3706/E		Class B
PEG (27) SO 3706/E	PEG (26) SO 3706/E	ob177	21°33'00"	A SO 3706/E	0°00'00"	38.77 A SO 3706/E		Class B
PEG (26) SO 3706/E	PEG (25) SO 3706/E	ob178	25°16'00"	A SO 3706/E	0°00'00"	38.80 A SO 3706/E		Class B
PEG (25) SO 3706/E	PEG (24) SO 3706/E	ob179	29°11'00"	A SO 3706/E	0°00'00"	25.46 A SO 3706/E		Class B
PEG (24) SO 3706/E	PEG (23) SO 3706/E	ob180	32°16'00"	A SO 3706/E	0°00'00"	35.30 A SO 3706/E		Class B
PEG (23) SO 3706/E	PEG (22) SO 3706/E	ob181	35°57'30"	A SO 3706/E	0°00'00"	29.05 A SO 3706/E		Class B
UNMK 1009 SO 588048	UNMK 1010 SO 588048	ob163	6°54'00"	C		14.31 C		Class B
UNMK 1010 SO 588048	UNMK 1011 SO 588048	ob183	10°34'00"	C		21.56 C		Class B
UNMK 1011 SO 588048	UNMK 1012 SO 588048	ob184	15°03'00"	C		24.60 C		Class B
UNMK 1012 SO 588048	UNMK 1013 SO 588048	ob185	19°03'00"	C		35.68 C		Class B
UNMK 1013 SO 588048	PEG (26) SO 3706/E	ob186	22°51'00"	C		38.94 C		Class B
PEG 28 SO 588048	UNMK 1016 SO 588048	ob102	348°39'00"	C		19.44 C		Class BD
UNMK 1016 SO 588048	IT XI SO 5551	ob189	296°48'20"	C		66.22 C		
PEG (4) SO 3706/E	IS 27 SO 588048	ob206	56°48'00"	C		5.25 C		Class B
IT XI SO 5551	UNMK 1017 SO 588048	ob84	160°23'00"	C		141.68 C		
RA 77	UNMK 1021 SO 588048	ob79	196°21'30"	C		137.37 C		
IT 3 SO 425516	UNMK 1022 SO 588048	ob7	7°03'00"	C		187.81 C		

Mark and Vector

Survey Number SO 588048

Meridional Circuit Marlborough 2000

From	To	Code	Bearing	Adpt Surv	Bearing Correction	Distance	Adpt Surv	Class
WAIPAPA BOAT COMPOUND	UNMK 1018 SO 588048	ob17	111°51'00"	C		47.05 C		
WAIPAPA BOAT COMPOUND	UNMK 1019 SO 588048	ob18	203°53'00"	C		61.43 C		
WAIPAPA BOAT COMPOUND	IS 31 SO 588048	ob19	315°18'00"	M		68.47 M		
WAIPAPA BOAT COMPOUND	PEG 32 SO 588048	ob20	316°45'20"	M		68.53 M		
WAIPAPA BOAT COMPOUND	PEG 8 SO 588048	ob21	318°04'40"	M		68.63 M		
WAIPAPA BOAT COMPOUND	PEG 12 SO 588048	ob22	340°00'00"	M		67.05 M		
WAIPAPA BOAT COMPOUND	PEG 7 SO 588048	ob23	346°08'00"	M		89.12 M		
WAIPAPA BOAT COMPOUND	IS 34 SO 588048	ob24	348°43'40"	M		77.70 M		
WAIPAPA BOAT COMPOUND	PEG 35 SO 588048	ob25	352°15'00"	M		61.47 M		
WAIPAPA BOAT COMPOUND	PEG 23 SO 588048	ob26	354°48'20"	M		64.06 M		
WAIPAPA BOAT COMPOUND	PEG 11 SO 588048	ob27	6°32'00"	M		79.82 M		
WAIPAPA BOAT COMPOUND	PEG 5 SO 588048	ob28	3°04'00"	M		155.30 M		
WAIPAPA BOAT COMPOUND	PEG 4 SO 588048	ob29	5°32'20"	M		199.82 M		
WAIPAPA BOAT COMPOUND	PEG 3 SO 588048	ob30	5°33'30"	M		244.37 M		
WAIPAPA BOAT COMPOUND	PEG 2 SO 588048	ob31	4°27'20"	M		287.70 M		
WAIPAPA BOAT COMPOUND	IS 1 SO 588048	ob32	0°56'50"	M		400.47 M		

Mark and Vector

Survey Number SO 588048

Meridional Circuit Marlborough 2000

From	To	Code	Bearing	Adpt Surv	Bearing Correction	Distance	Adpt Surv	Class
WAIPAPA BOAT COMPOUND	IS 27 SO 588048	ob33	0°08'40" M			472.24 M		
WAIPAPA BOAT COMPOUND	PEG 28 SO 588048	ob34	6°41'00" M			396.93 M		
WAIPAPA BOAT COMPOUND	PEG 29 SO 588048	ob35	7°49'10" M			374.21 M		
IS 1 WAIPAPA BAY	IS 15 SO 588048	ob99	41°56'10" M			319.34 M		
IS 15 SO 588048	WAIPAPA BOAT COMPOUND	ob218	82°31'00" M			91.21 M		
IS 15 SO 588048	IS 9 SO 588048	ob213	24°12'00" M			33.46 M		
IS 15 SO 588048	PEG 14 SO 588048	ob214	211°51'00" M			7.04 M		
IS 15 SO 588048	PEG 16 SO 588048	ob215	246°07'00" M			7.77 M		
IS 15 SO 588048	PEG 13 SO 588048	ob216	44°48'20" M			91.62 M		
IS 15 SO 588048	PEG 10 SO 588048	ob217	242°44'00" M			40.82 M		
WAIPAPA BOAT COMPOUND	PEG 26 SO 588048	ob11	4°17'10" M			293.86 M		
WAIPAPA BOAT COMPOUND	PEG 33 SO 588048	ob12	356°38'00" M			114.48 M		
WAIPAPA BOAT COMPOUND	PEG 6 SO 588048	ob13	357°56'00" M			119.24 M		
WAIPAPA BOAT COMPOUND	PEG 25 SO 588048	ob14	356°10'40" M			112.91 M		
WAIPAPA BOAT COMPOUND	PEG 18 SO 588048	ob15	240°02'50" M			201.11 M		
WAIPAPA BOAT COMPOUND	PEG 19 SO 588048	ob8	252°11'20" M			130.08 M		
IS 15 SO 588048	PEG 19 SO 588048	ob211	230°08'00" M			43.54 M		
IS 15 SO 588048	PEG 18 SO 588048	ob212	223°26'00" M			121.92 M		
IT 4 SO 425516	PEG 18 SO 588048	ob75	36°25'00" C			11.82 C		

Mark and Vector

Survey Number SO 588048
Meridional Circuit Marlborough 2000

From	To	Code	Bearing	Adpt Surv	Bearing Correction	Distance	Adpt Surv	Class
WAIPAPA BOAT COMPOUND	UNMK 1046 SO 588048	ob9	142°45'00"	C		40.75 C		
WAIPAPA BOAT COMPOUND	UNMK 1044 SO 588048	ob10	171°26'40"	C		55.05 C		
IS 1 WAIPAPA BAY	UNMK 1033 SO 588048	ob97	59°24'00"	C		98.42 C		
IS 1 WAIPAPA BAY	UNMK 1032 SO 588048	ob98	81°22'30"	C		79.03 C		
UNMK 1027 SO 588048	UNMK (9) DP 9890	ob195	91°36'30"	A DP 9890	0°00'00"	1.84 C		Class BD
UNMK (9) DP 9890	IS V SO 3706/E	ob219	215°03'40"	C		59.85 C		
UNMK 1008 SO 588048	UNMK (14) DP 9890	ob122	90°00'00"	A DP 9890	0°00'00"	3.41 C		Class BD
UNMK (14) DP 9890	IT XI SO 5551	ob220	233°05'00"	C		93.97 C		

Mark Name	Mark Condition	Description
IS 1 WAINUI		F6BJ - Iron Reinforcing rod driven into gravel. Alt.name BM1195F
IS 1 WAIPAPA BAY		EXL6 - IS set in concrete down 0.15m in grass berm
IS 15 SO 588048		flush in ground
IT 3 SO 425516		flush in ground
IT 4 SO 425516		IT 4 found lying flat and disturbed, no original location discernable, removed.
IT I SO 3706/E		down 0.1m set in concrete
IT SO 3706/F		down 0.2m set in concrete
T (Puhipuhi SD)		B240 - SS PIN grouted into 50mm Iron Pipe 0.20m above GL
UNMK 1000 SO 58804		SH1 edge of seal. Impracticable and unsafe to mark.
UNMK 1001 SO 58804		SH1 edge of seal, impracticable and unsafe to mark.
UNMK 1003 SO 58804		Bottom of wall.
UNMK 1004 SO 58804		Bottom of wall.
UNMK 1005 SO 58804		Bottom of wall.
UNMK 1006 SO 58804		Bottom of wall.
UNMK 1007 SO 58804		Bottom of wall.
UNMK 1009 SO 58804		SH1 edge of seal. Impracticable and unsafe to mark.
UNMK 1010 SO 58804		SH1 edge of seal. Impracticable and unsafe to mark.
UNMK 1011 SO 58804		SH1 edge of seal. Impracticable and unsafe to mark.
UNMK 1012 SO 58804		SH1 edge of seal. Impracticable and unsafe to mark.
UNMK 1013 SO 58804		SH1 edge of seal. Impracticable and unsafe to mark.

Mark and Vector

Survey Number SO 588048

Meridional Circuit Marlborough 2000

Mark Name	Mark Condition	Description
WAIPAPA BOAT COM		EX6E - set in low concrete pillar
IS IV SO 3706/E	Searched For and Not Found	
IT XII SO 5551	Searched For and Not Found	
RA 77	Searched For and Not Found	

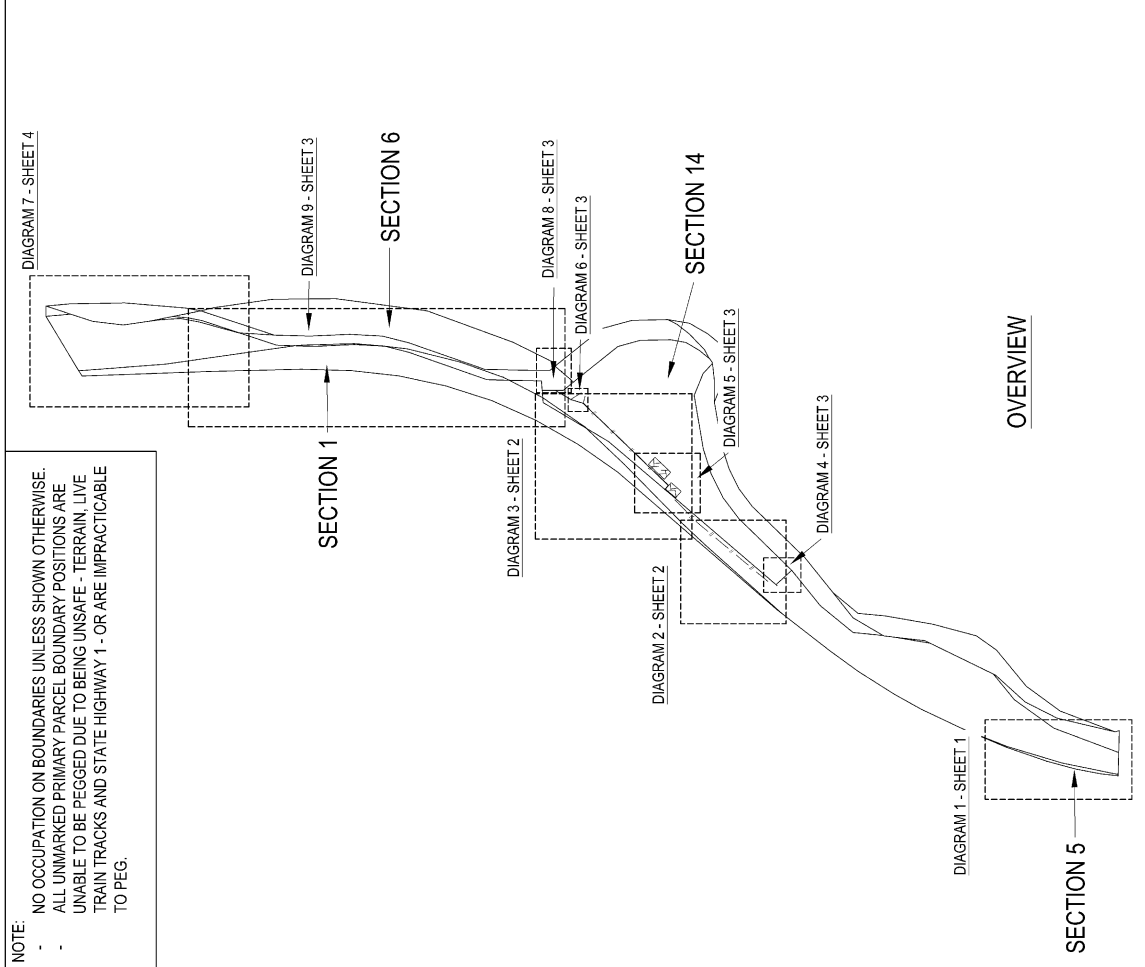
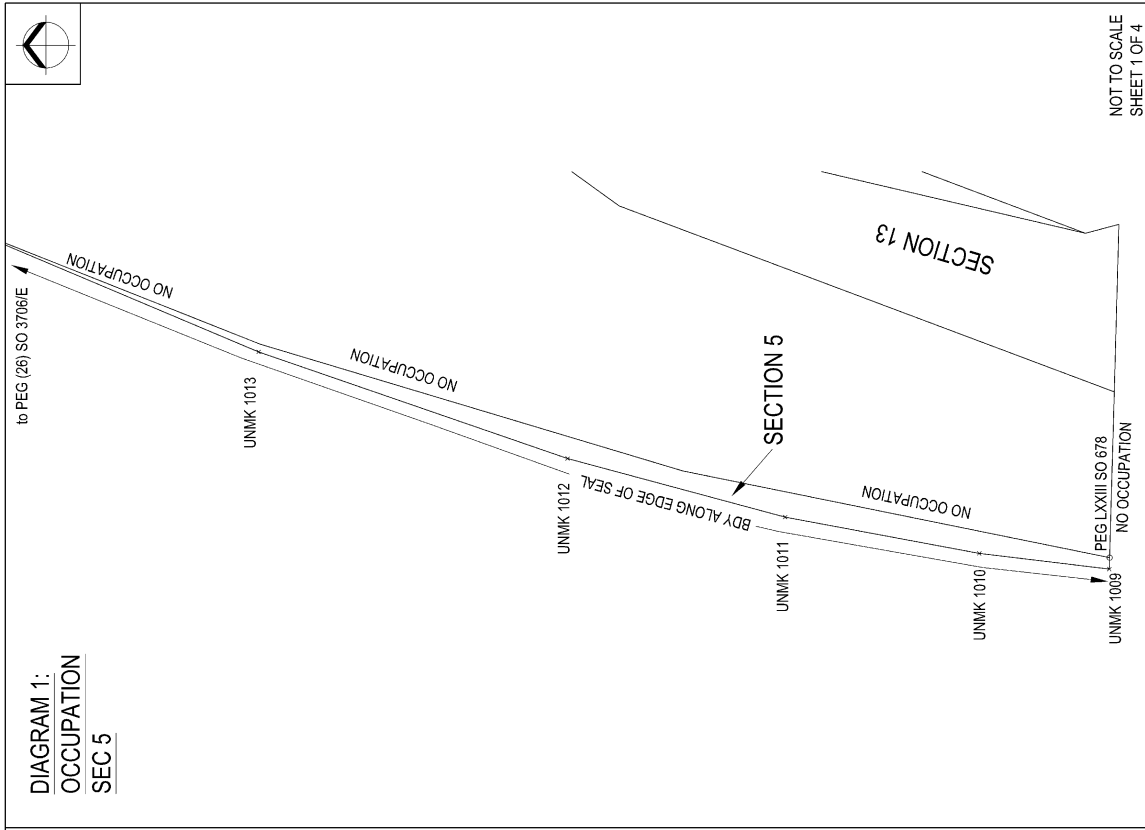
*** End of Report ***

SO 588048 Schedule of Areas

Land to be Declared State Highway				
Shown	Description	Comprised In	Area	Owner
Section 1	Railway	GN 1951, p165	0.7618Ha	His Majesty The King (New Zealand Railways Corporation)
Section 2	Lot 5 DP 9890	RT MB5D/342	0.0053Ha	Kaikōura District Council
Section 3			0.0446Ha	
Section 4	Lot 3 DP 9890	RT 24332	0.0075Ha	John Reader Trustees Limited

Land to be Set Apart for Railway				
Shown	Description	Comprised In	Area	Owner
Section 5	Road	GN 1942, p2530	0.0208Ha	His Majesty The King (Waka Kotahi NZ Transport Agency)
Section 6	Crown Land	No reference	0.7262Ha	His Majesty The King
Section 7	Lot 5 DP 9890	RT MB5D/342	0.1831Ha	Kaikōura District Council
Section 8	Lot 3 DP 9890	RT 24332	0.1194Ha	John Reader Trustees Limited
Section 15	Crown Land	No reference	0.0442Ha	His Majesty The King
Section 16	Crown Land	No reference	0.0087Ha	His Majesty The King

Land to Remain Fee Simple				
Shown	Description	Comprised In	Area	Owner
Section 9	Lot 5 DP 9890	RT MB5D/342	0.0088Ha	Kaikōura District Council
Section 10			0.2126Ha	
Section 11			0.3893Ha	
Section 12			0.0020Ha	
Section 13			0.0977Ha	
Section 14	Lot 3 DP 9890	RT 24332	1.1788Ha	John Reader Trustees Limited



NOTE:
 - NO OCCUPATION ON BOUNDARIES UNLESS SHOWN OTHERWISE.
 - ALL UNMARKED PRIMARY PARCEL BOUNDARY POSITIONS ARE UNABLE TO BE PEGGED DUE TO BEING UNSAFE - TERRAIN, LIVE TRAIN TRACKS AND STATE HIGHWAY 1 - OR ARE IMPRACTICABLE TO PEG.

NOT TO SCALE
 SHEET 1 OF 4

<p>SO 588048 LEGALISATION - SECTIONS 1 - 16</p>	<p>OCCUPATION DIAGRAM</p>	<p>DRAWN BY: MA SURVEYOR: MA LICENCED SURVEYOR: VW FIRM: BECA LTD</p>	<p>REF: 3336760/200</p>
---	----------------------------------	--	-------------------------



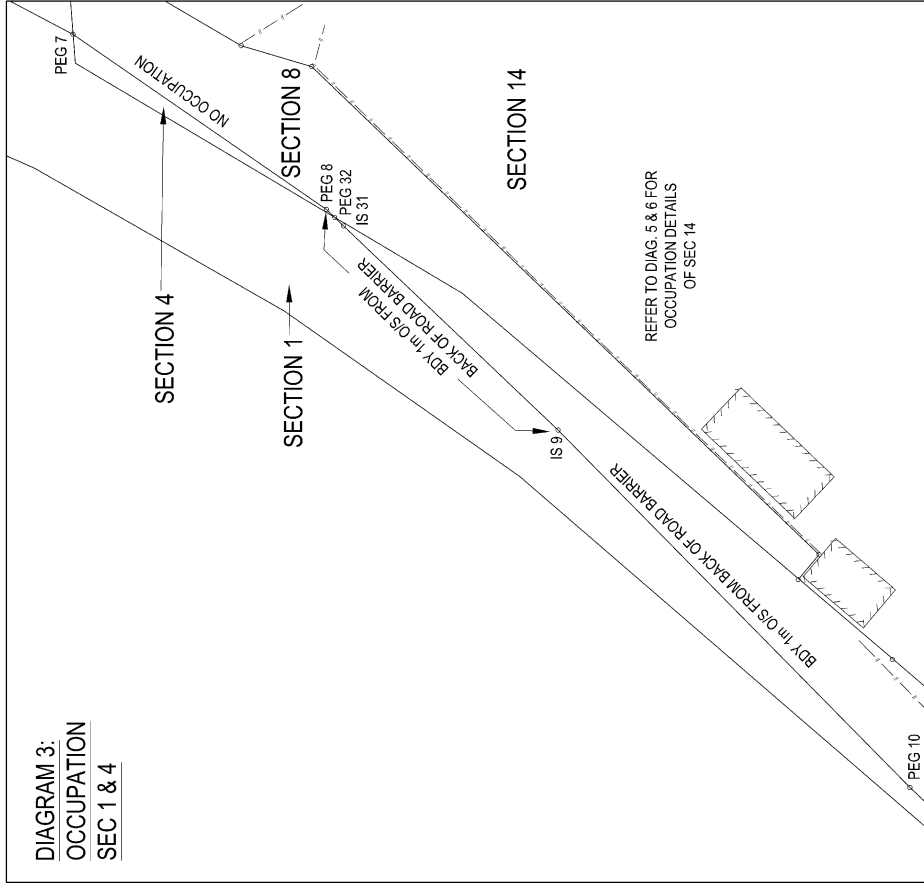


DIAGRAM 3:
OCCUPATION
SEC 1 & 4

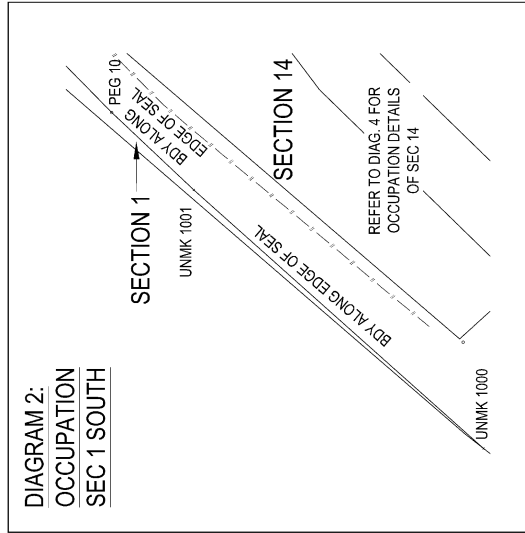


DIAGRAM 2:
OCCUPATION
SEC 1 SOUTH

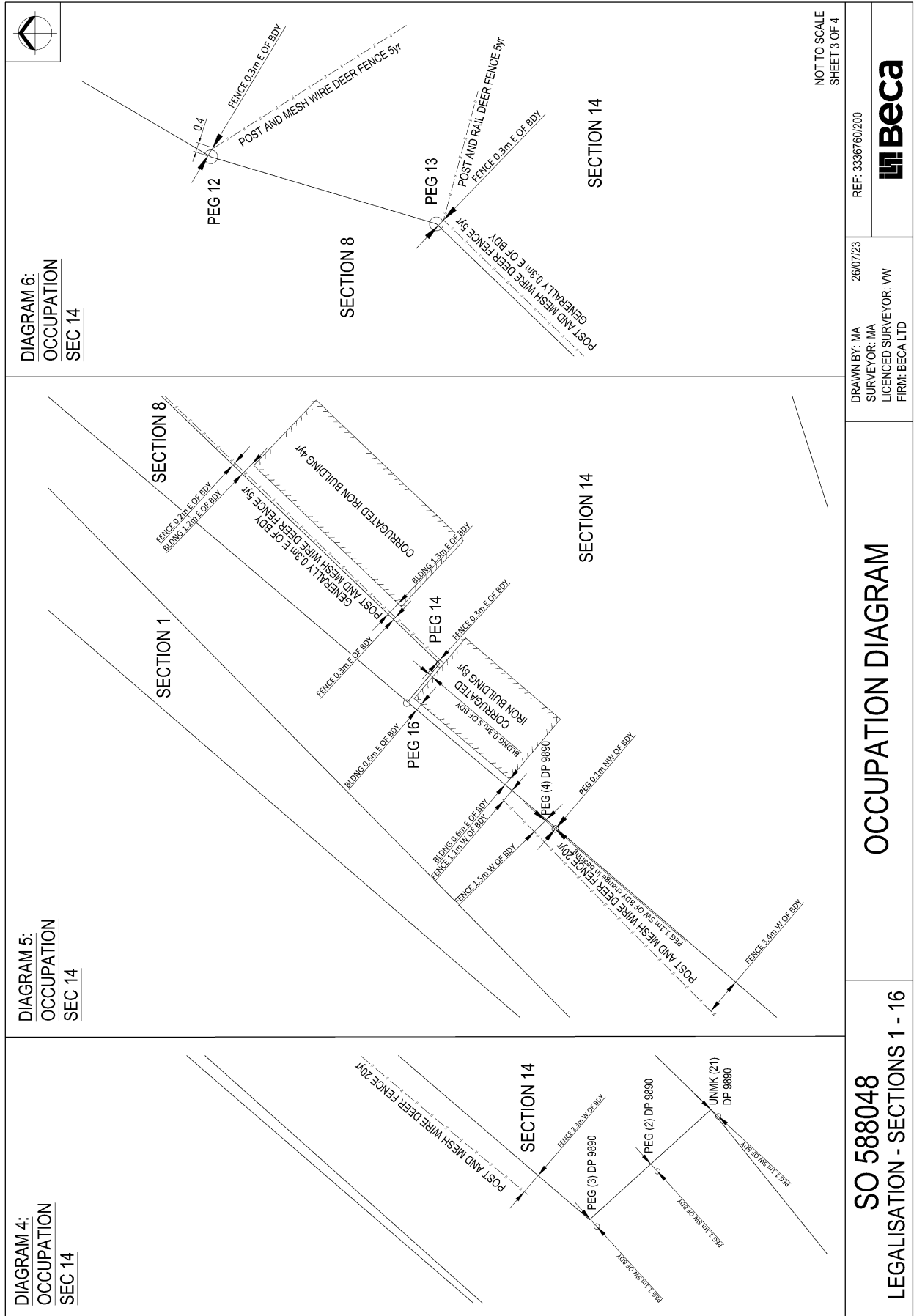
NOT TO SCALE
SHEET 2 OF 4

REF: 3336760/200
DRAWN BY: MA
SURVEYOR: MA
LICENCED SURVEYOR: VW
FIRM: BECA LTD



OCCUPATION DIAGRAM

SO 588048
LEGALISATION - SECTIONS 1 - 16



NOT TO SCALE
SHEET 3 OF 4

REF: 3336760/200

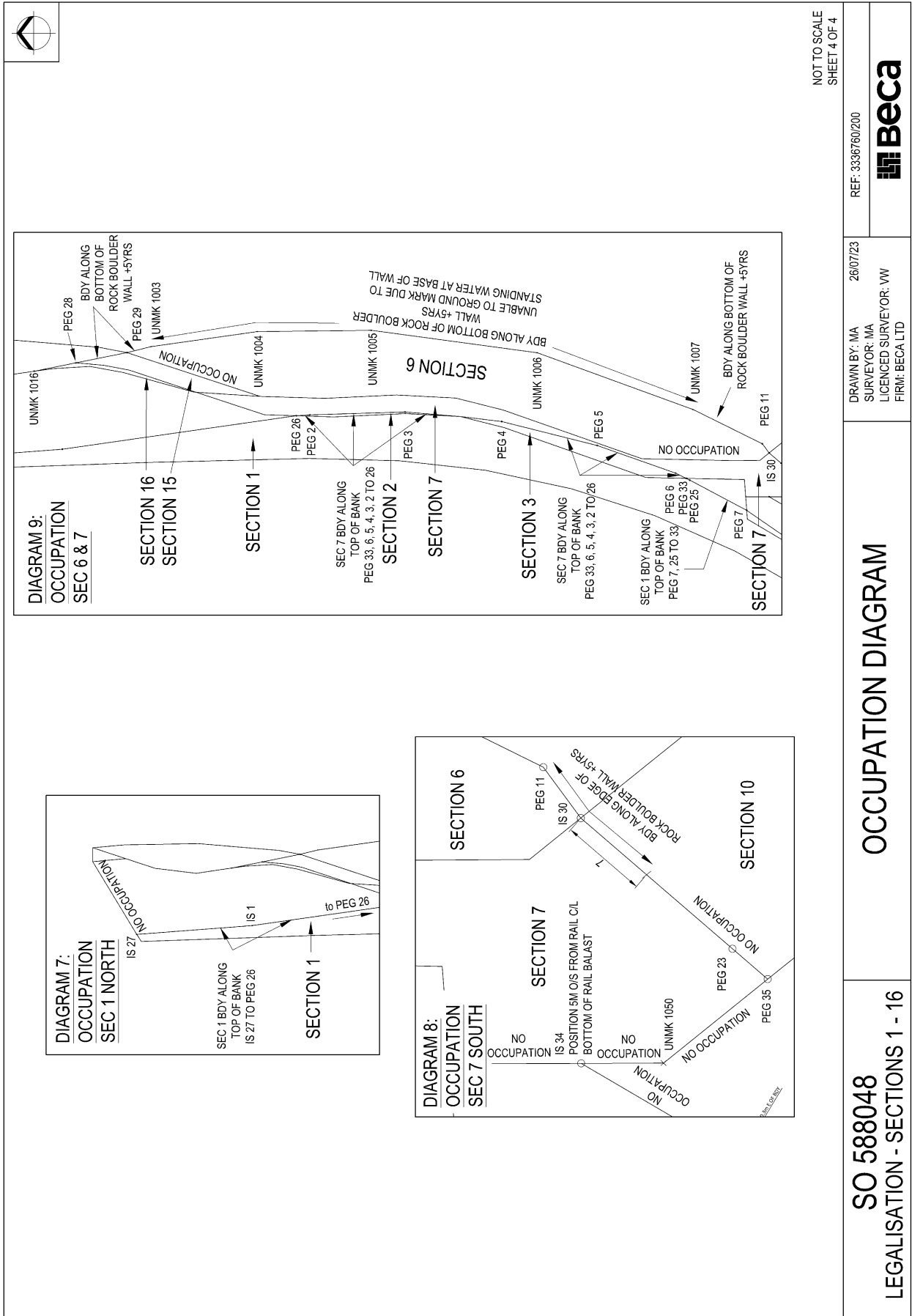
26/07/23

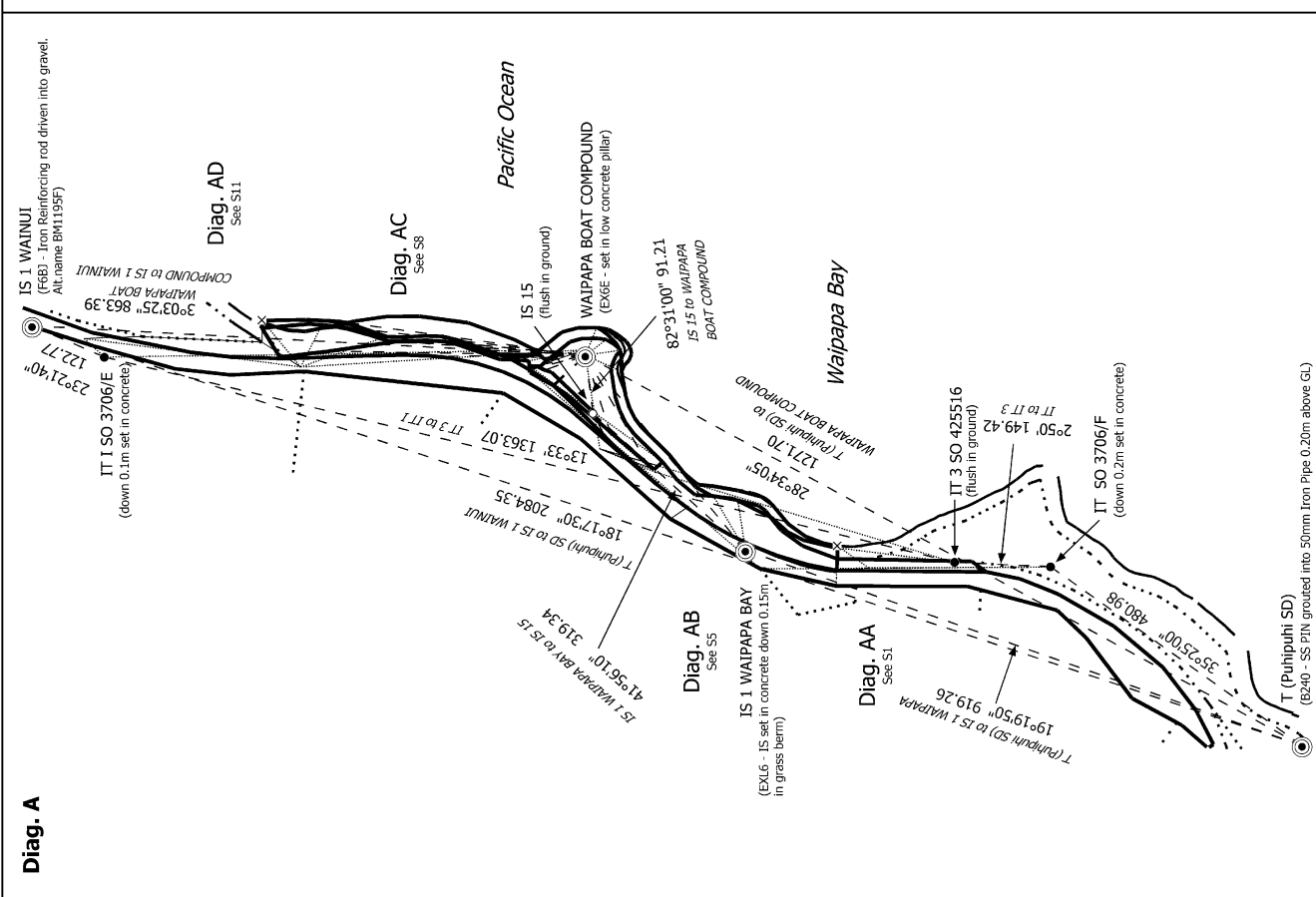
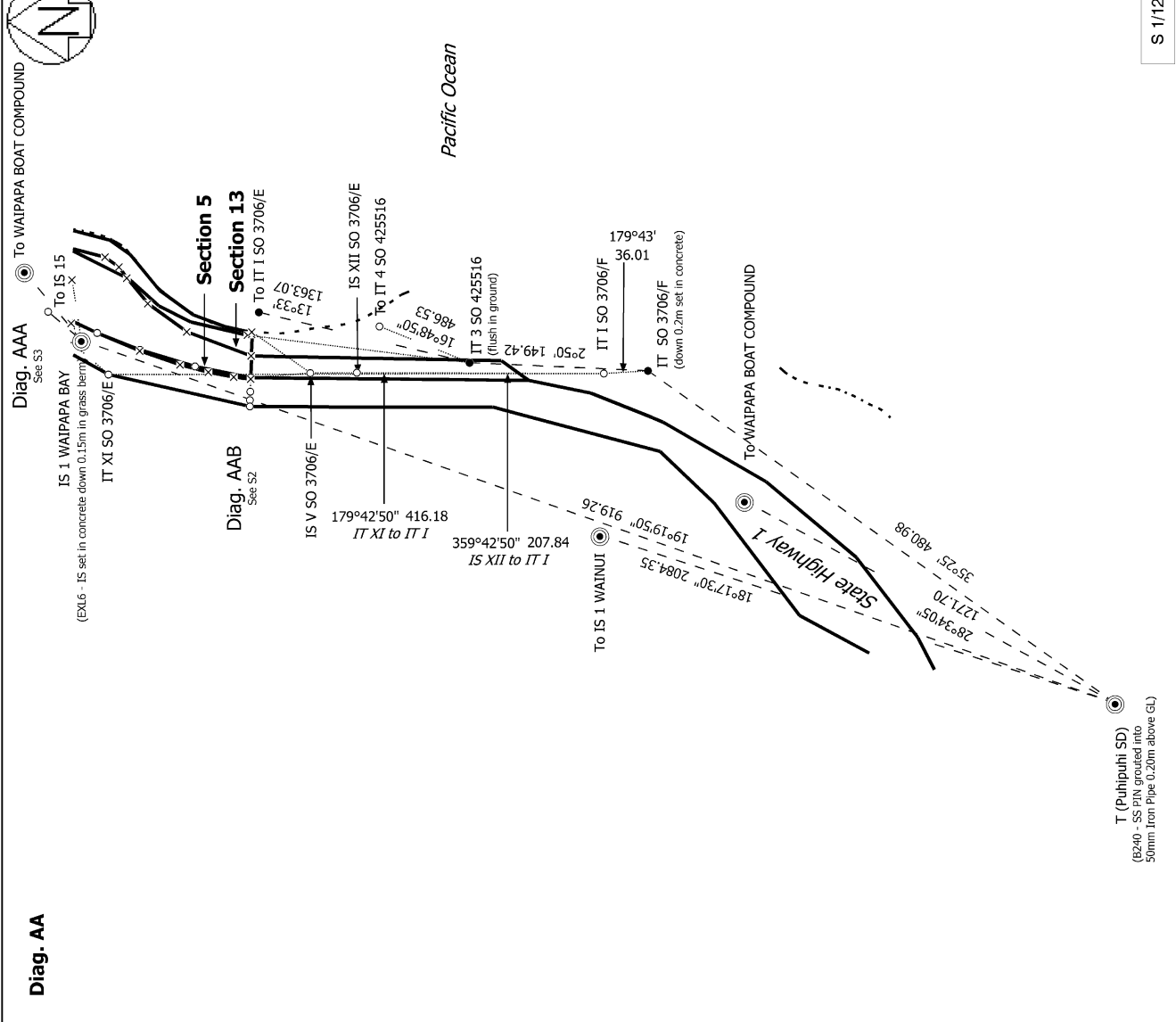
DRAWN BY: MA
SURVEYOR: MA
LICENCED SURVEYOR: VW
FIRM: BECA LTD



OCCUPATION DIAGRAM

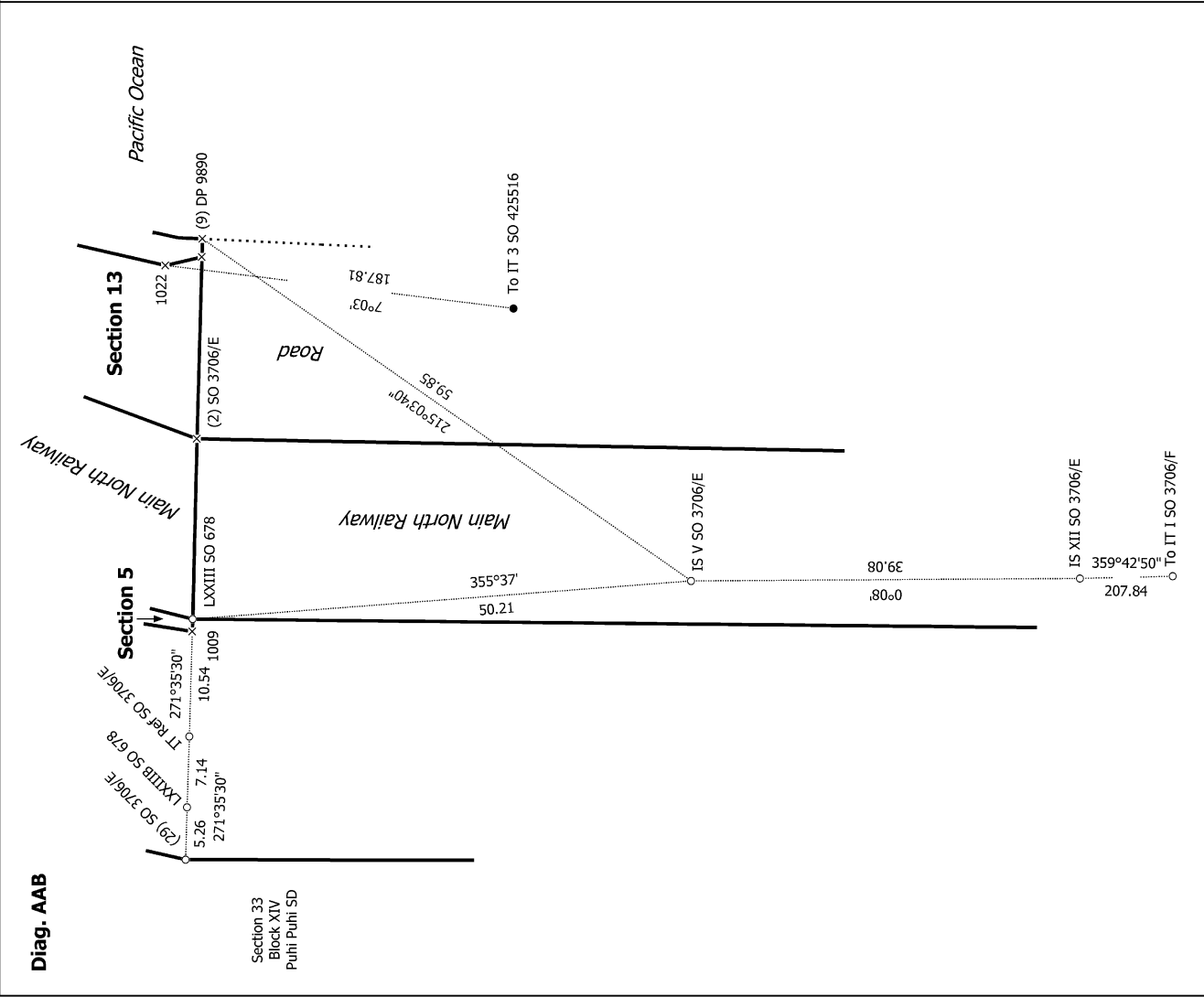
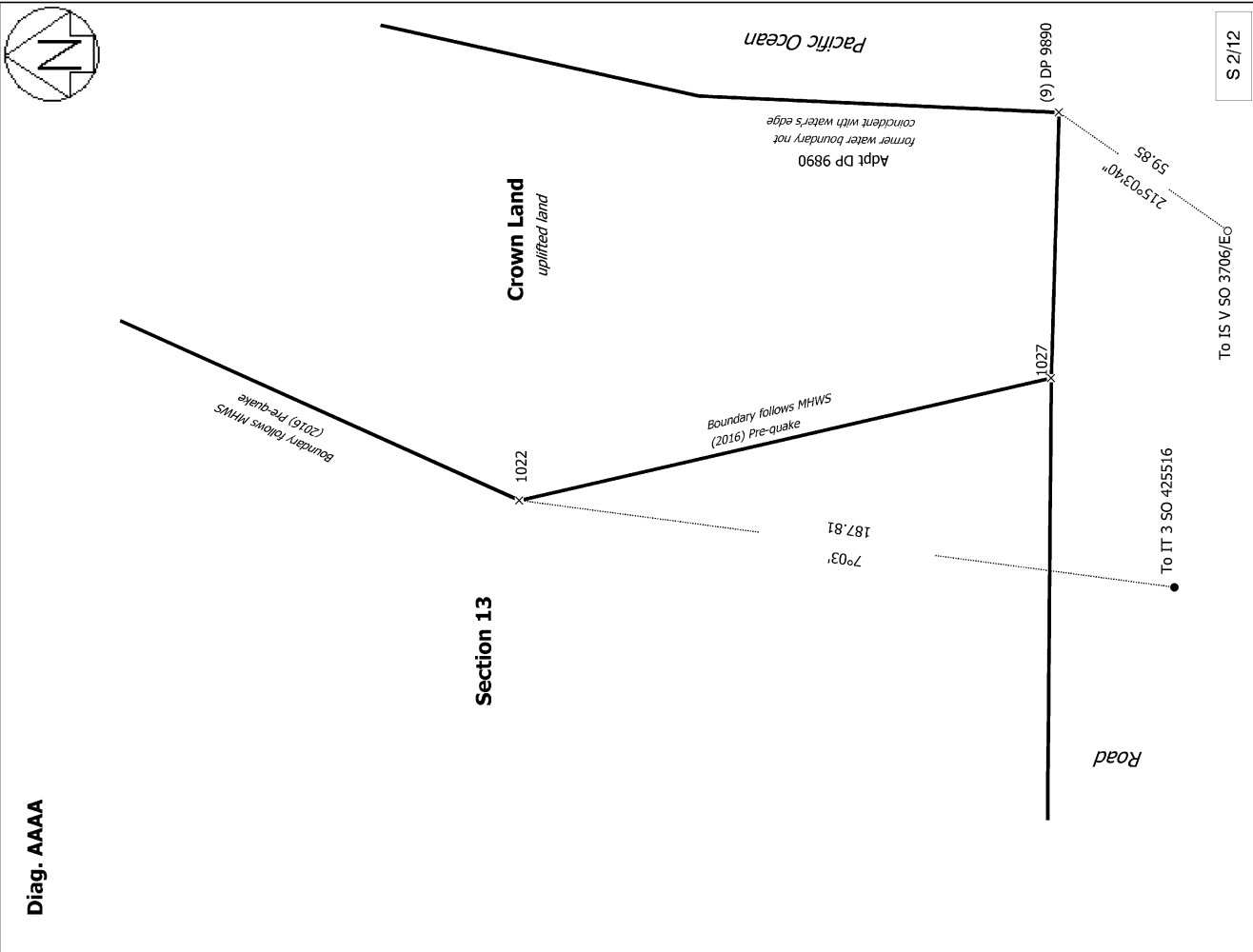
SO 588048
LEGALISATION - SECTIONS 1 - 16



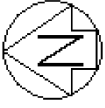


<p>Record of Survey SO 588048 Approved on: 3/01/2024</p>	<p>Surveyor: Vicki Leigh Webster Firm: Becca Limited Date of Survey: 23/03/2023</p>	<p>Sections 1 - 16</p>	<p>Land District: Marlborough Digitally Generated Plan Generated on: 03/07/2024 10:23am Page 20 of 36</p>
---	---	------------------------	---

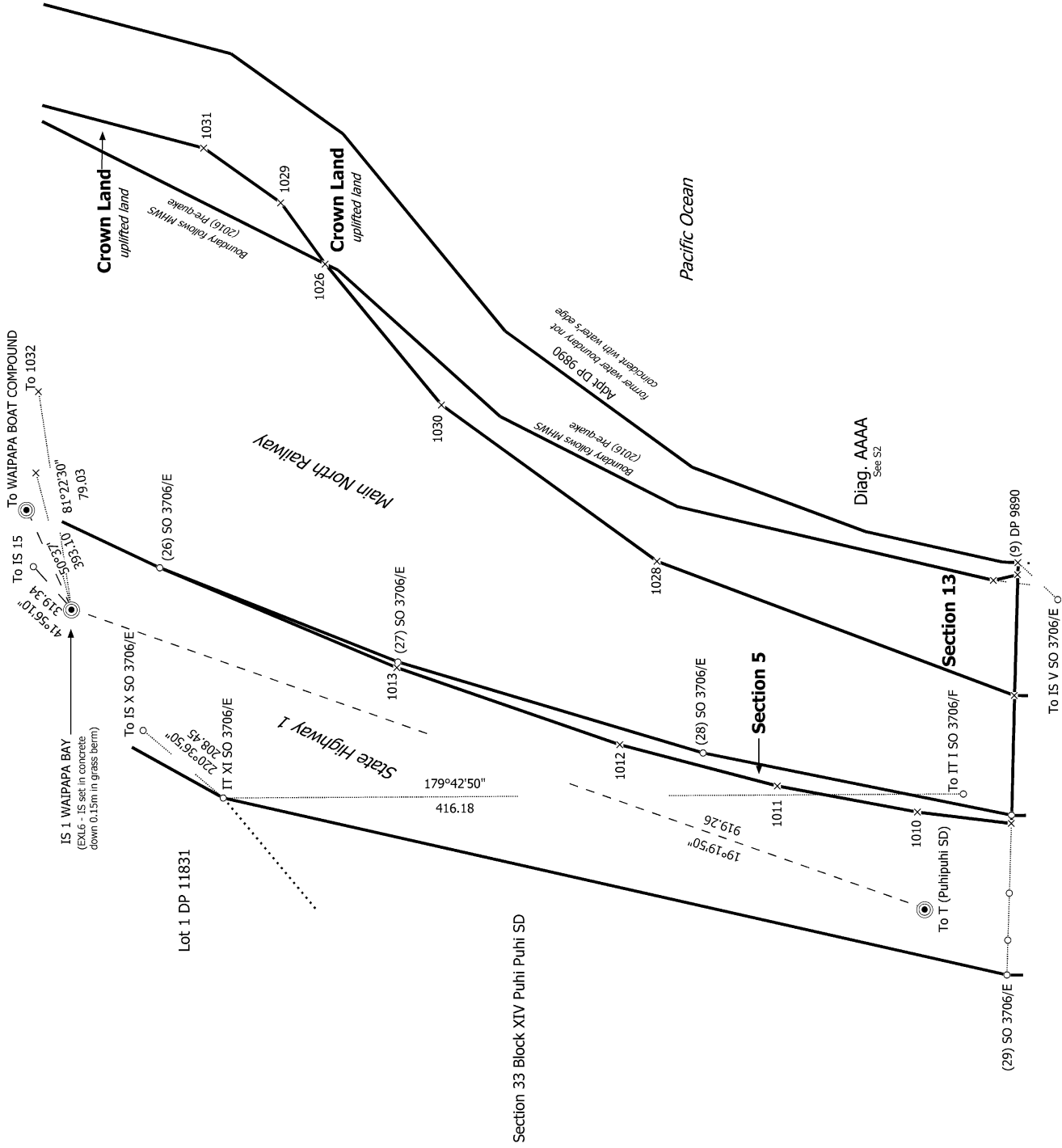
S 1/12



<p>Diag. A.AAB</p>	<p>Section 33 Block XIV Puni Puihi SD</p>	<p>Diag. A.AAA</p>	<p>Section 13</p>
<p>Land District: Marlborough</p>		<p>Sections 1 - 16</p>	
<p>Digitally Generated Plan Generated on: 03/01/2024 10:23am Page 21 of 36</p>		<p>Surveyor: Vicki Leigh Webster Firm: Beca Limited Date of Survey: 23/03/2023</p>	
<p>Record of Survey SO 588048 Approved on: 3/01/2024</p>		<p>S 2/12</p>	



Diag. AAA

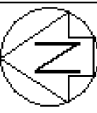


S 3/12

Sections 1 - 16

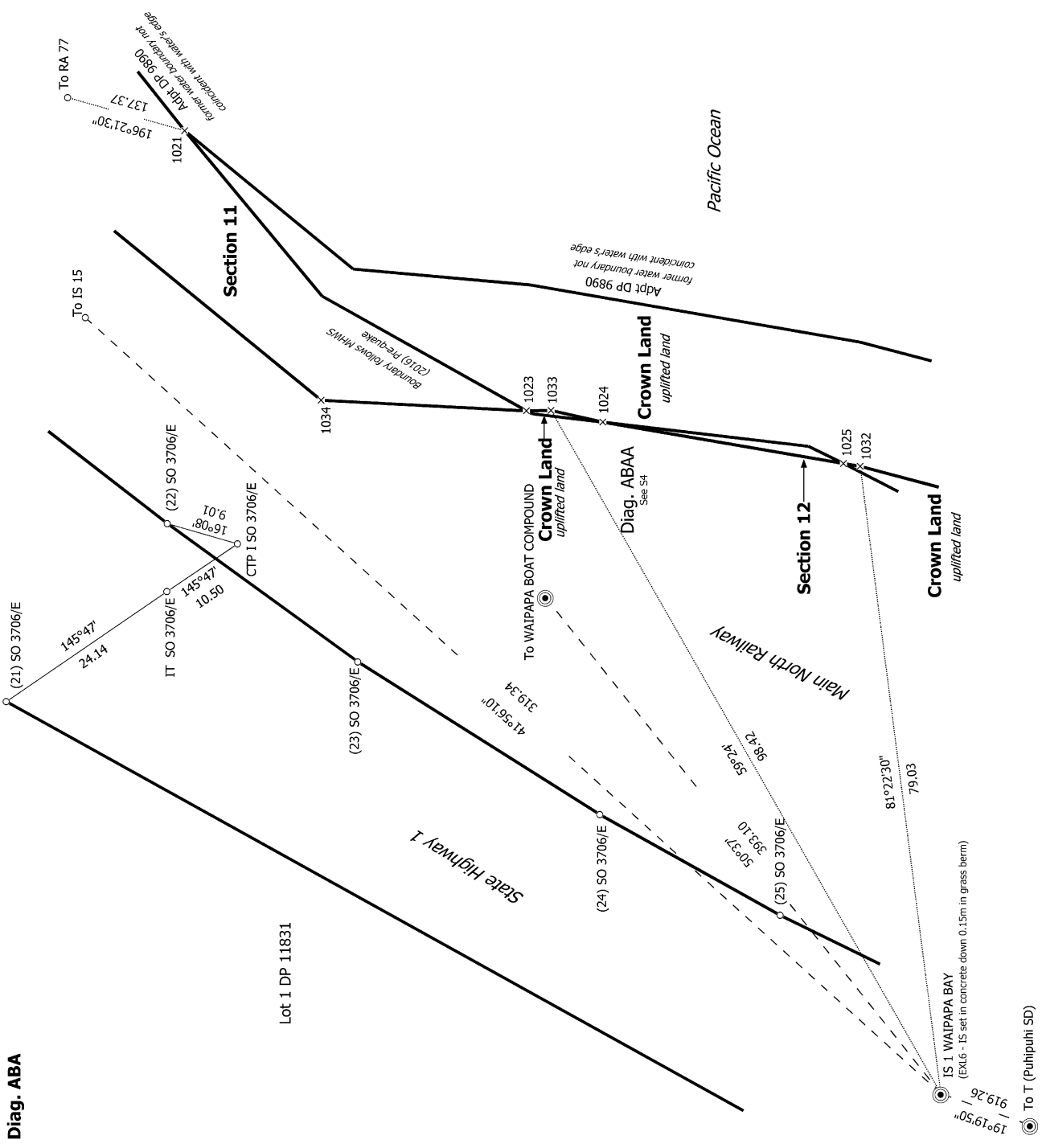
Surveyor: Vicki Leigh Webster
 Firm: Beca Limited
 Date of Survey: 23/03/2023

Record of Survey
 SO 588048
 Approved on: 3/01/2024



Diag. ABA

Lot 1 DP 11831



S 4/12

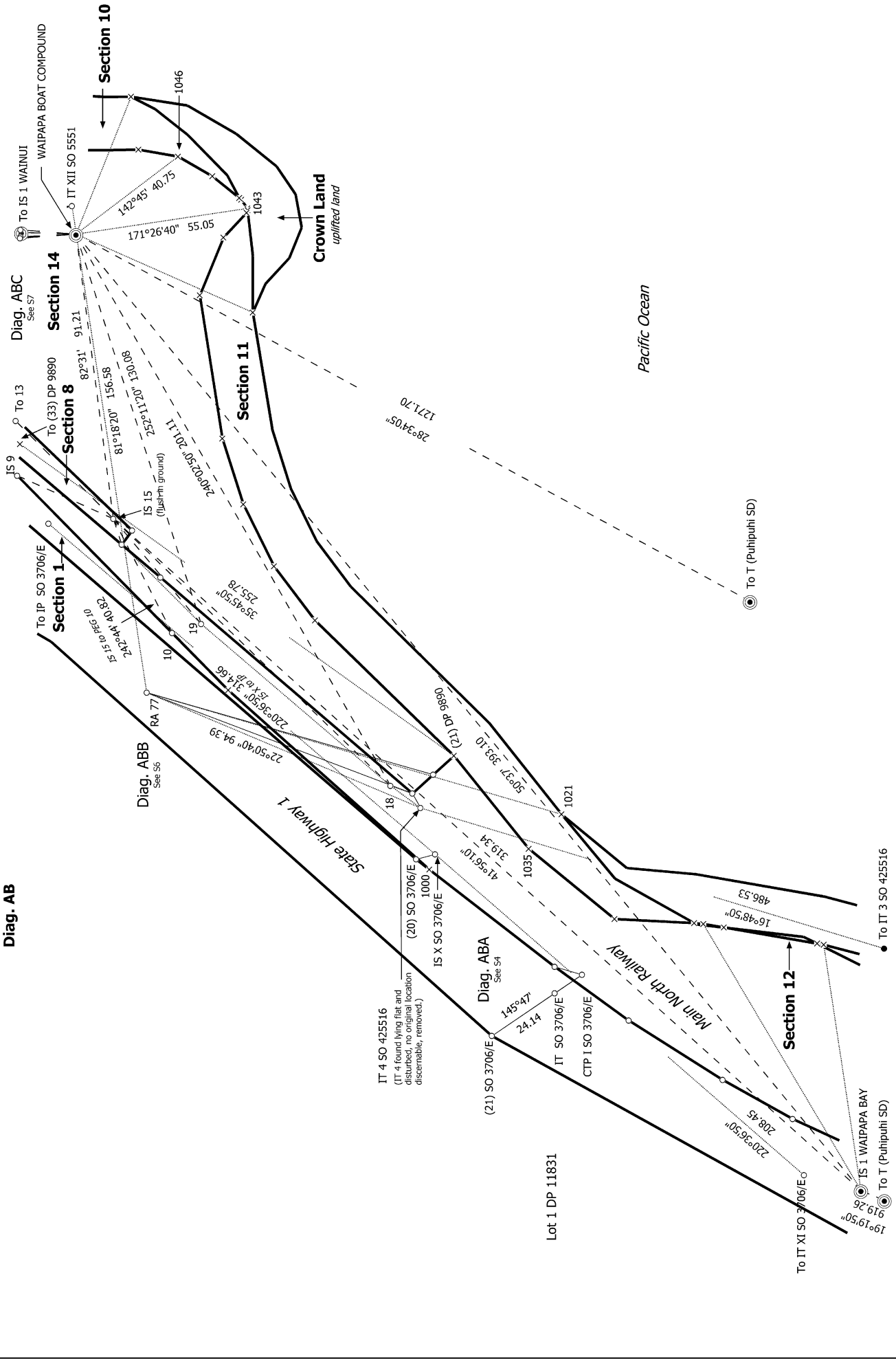
Land District: Marlborough

Digitally Generated Plan
Generated on: 03/01/2024 10:23am Page 23 of 36

Sections 1 - 16

Surveyor: Vicki Leigh Webster
Firm: Beca Limited
Date of Survey: 23/03/2023

Record of Survey
SO 588048
Approved on: 3/01/2024



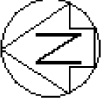
S 5/12

Record of Survey
SO 588048
Approved on: 3/01/2024

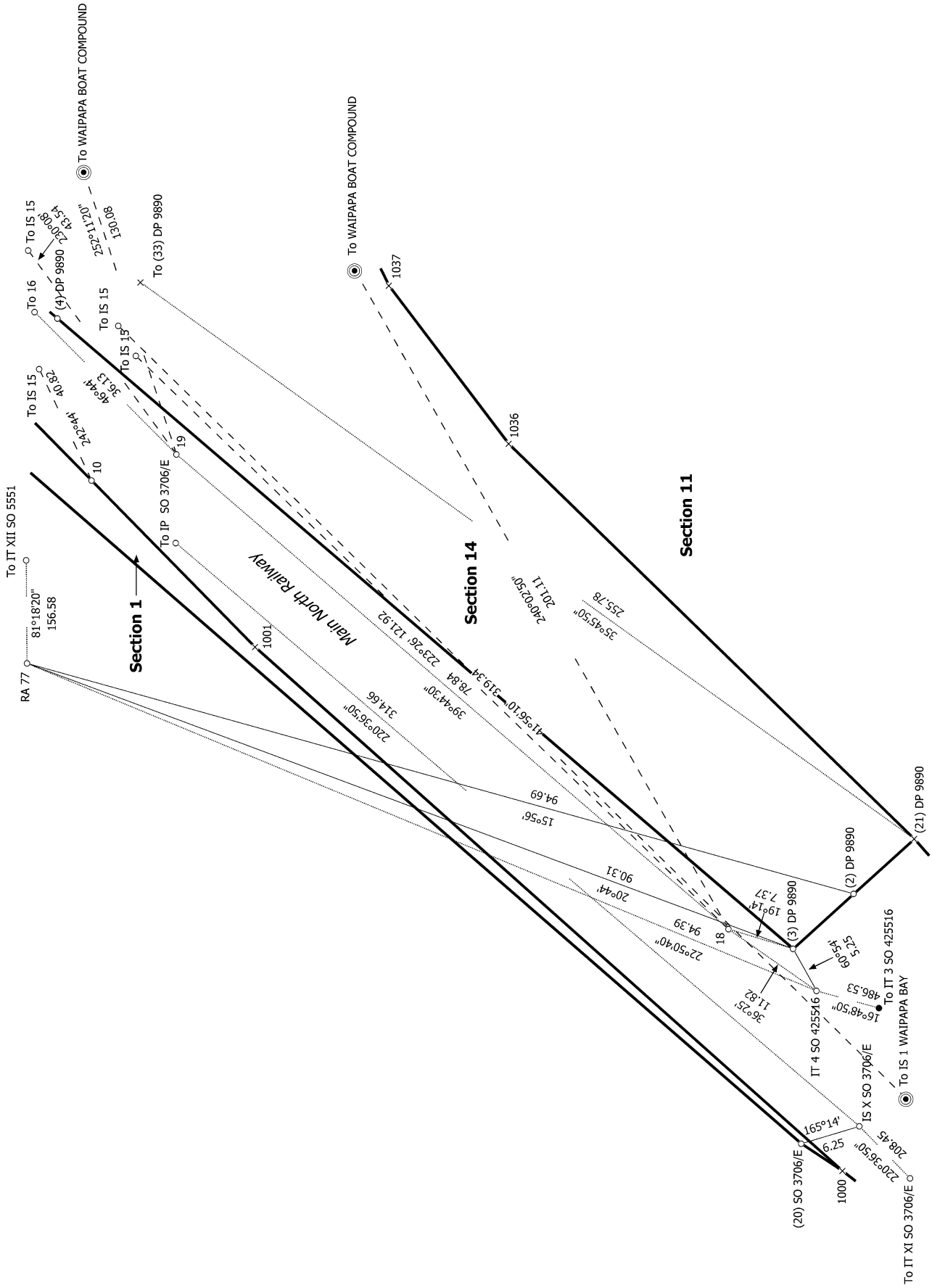
Surveyor: Vicki Leigh Webster
Firm: Becca Limited
Date of Survey: 23/03/2023

Sections 1 - 16

Land District: Marlborough
Digitally Generated Plan
Generated on: 03/01/2024 10:23am | Page 24 of 36



Diag. ABB



S 6/12

Land District: Marlborough

Digitally Generated Plan
Generated on: 03/07/2024 10:23am | Page 25 of 36

Sections 1 - 16

Surveyor: Vicki Leigh Webster

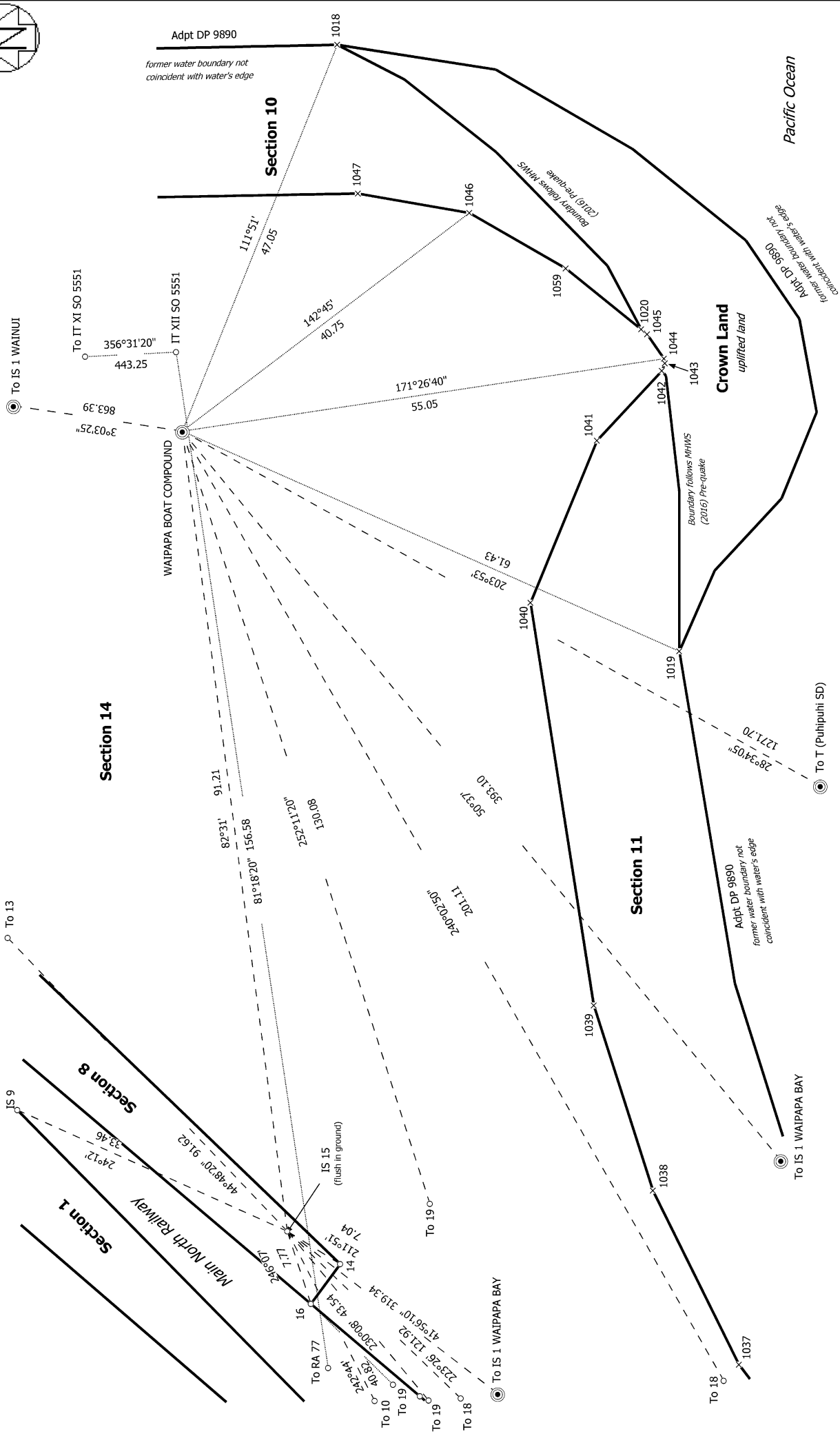
Firm: Beca Limited

Date of Survey: 23/03/2023

Record of Survey
SO 588048
 Approved on: 3/01/2024



Diag. ABC



S 7/12

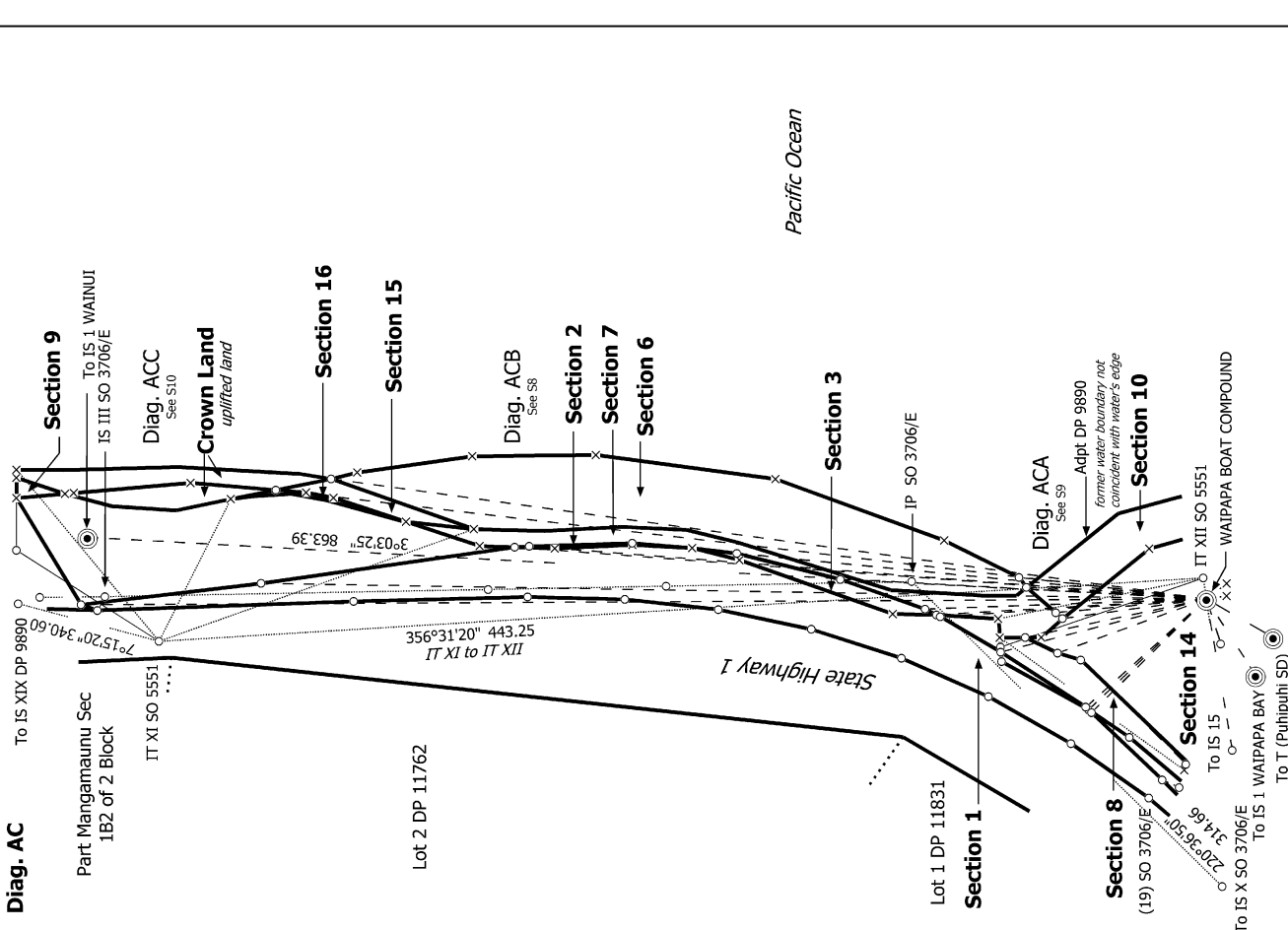
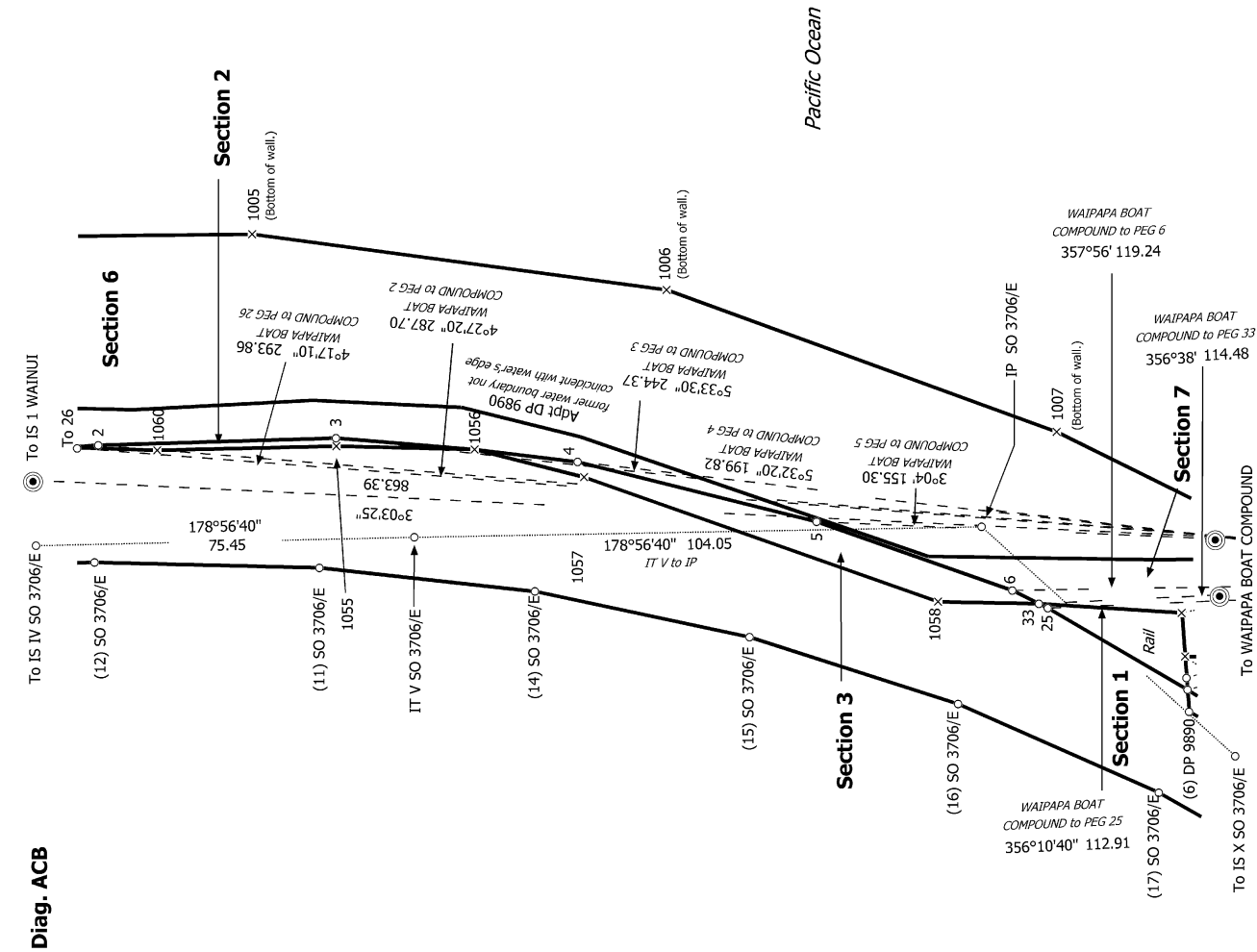
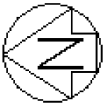
Land District: Marlborough

Digitally Generated Plan
Generated on: 03/01/2024 10:23am | Page 26 of 36

Sections 1 - 16

Surveyor: Vicki Leigh Webster
Firm: Becca Limited
Date of Survey: 23/03/2023

Record of Survey
SO 588048
Approved on: 3/01/2024



S 8/12

Record of Survey
 SO 588048
 Approved on: 3/01/2024

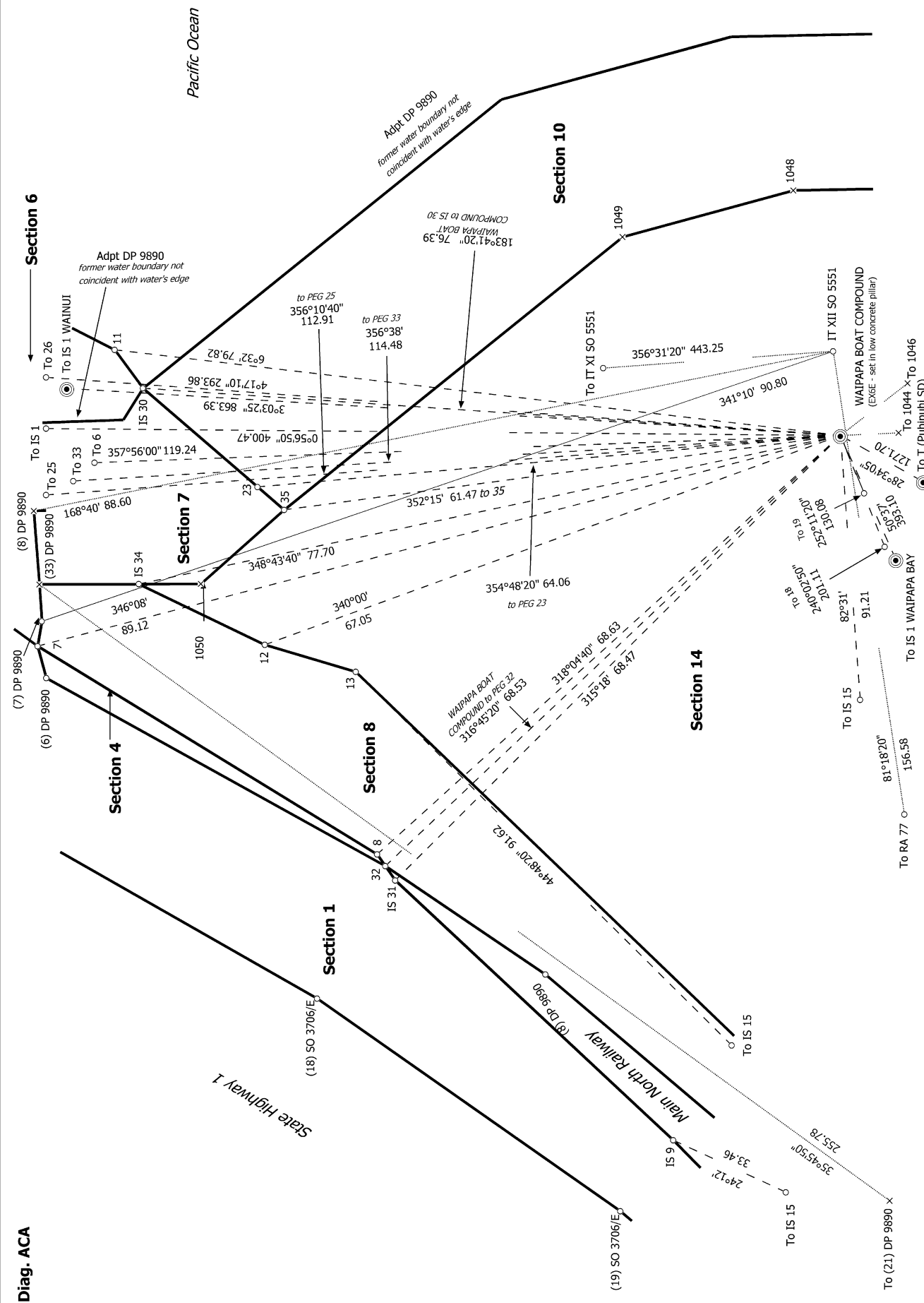
Surveyor: Vicki Leigh Webster
 Firm: Becca Limited
 Date of Survey: 23/03/2023

Sections 1 - 16

Land District: Marlborough



Diag. ACA



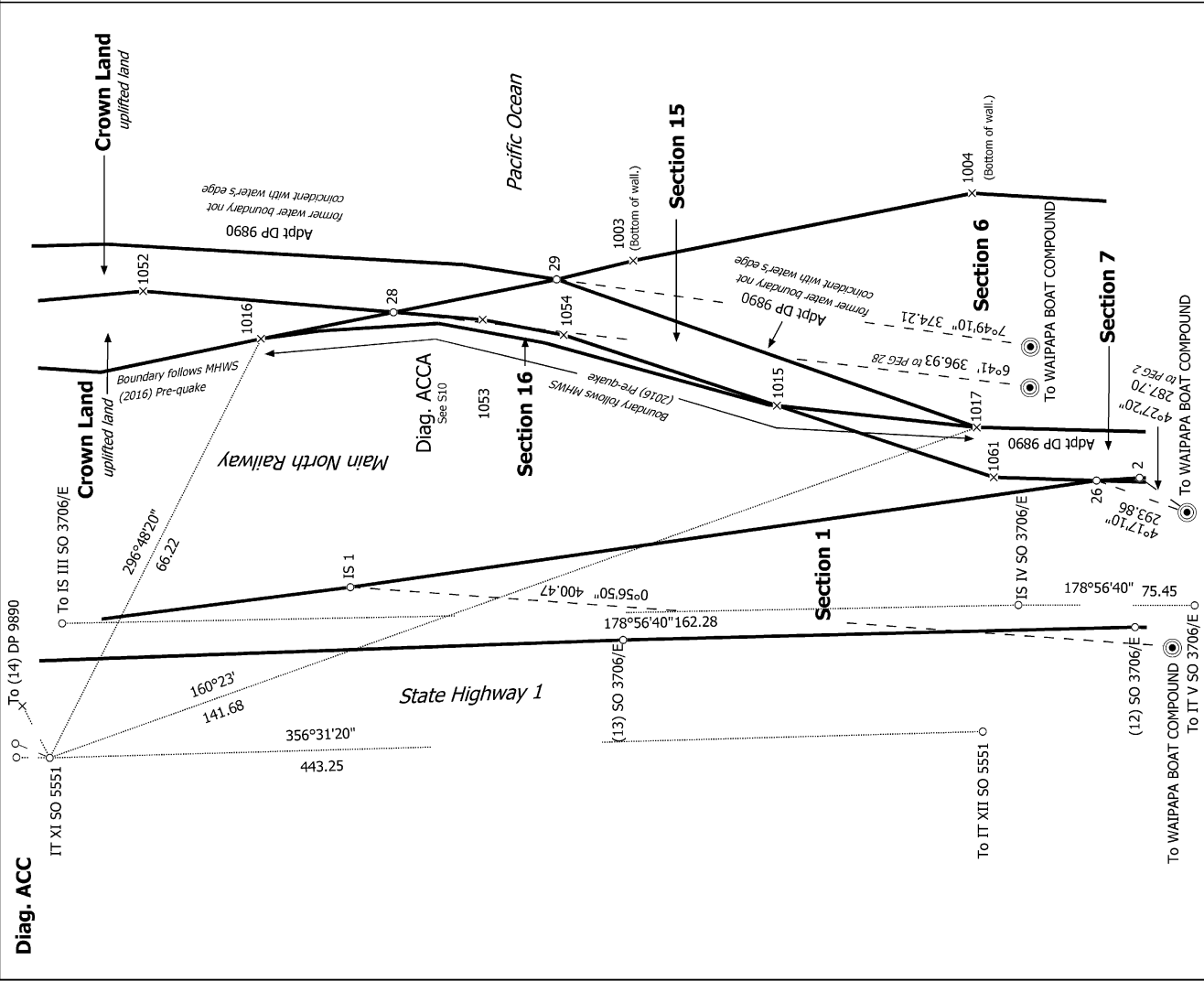
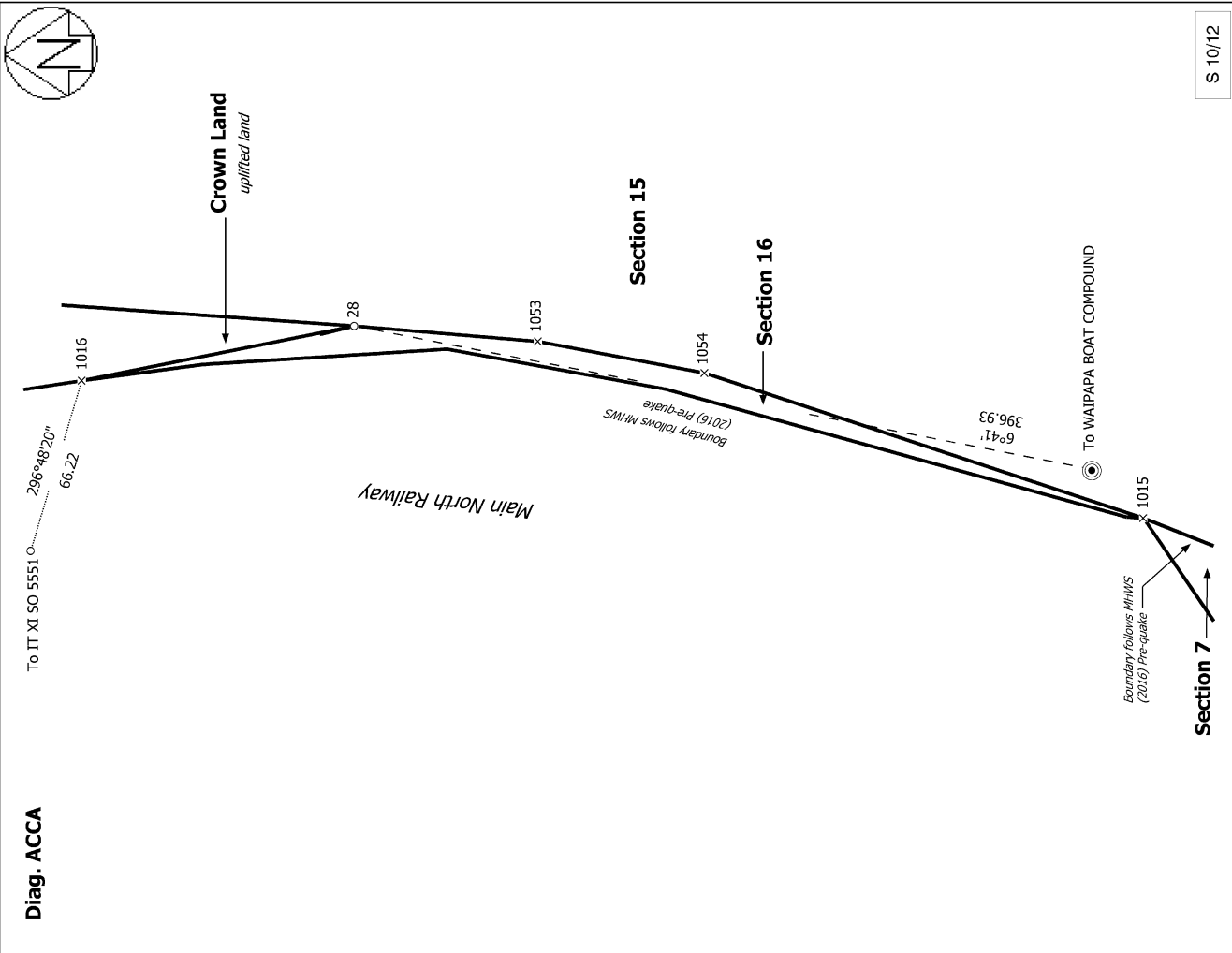
S 9/12

Record of Survey
SO 588048
Approved on: 3/01/2024

Surveyor: Vicki Leigh Webster
Firm: Beca Limited
Date of Survey: 23/03/2023

Sections 1 - 16

Land District: Marlborough
Digitally Generated Plan
Generated on: 03/01/2024 10:23:00 AM Page 28 of 36



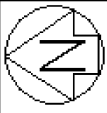
S 10/12

Record of Survey
SO 588048
Approved on: 3/01/2024

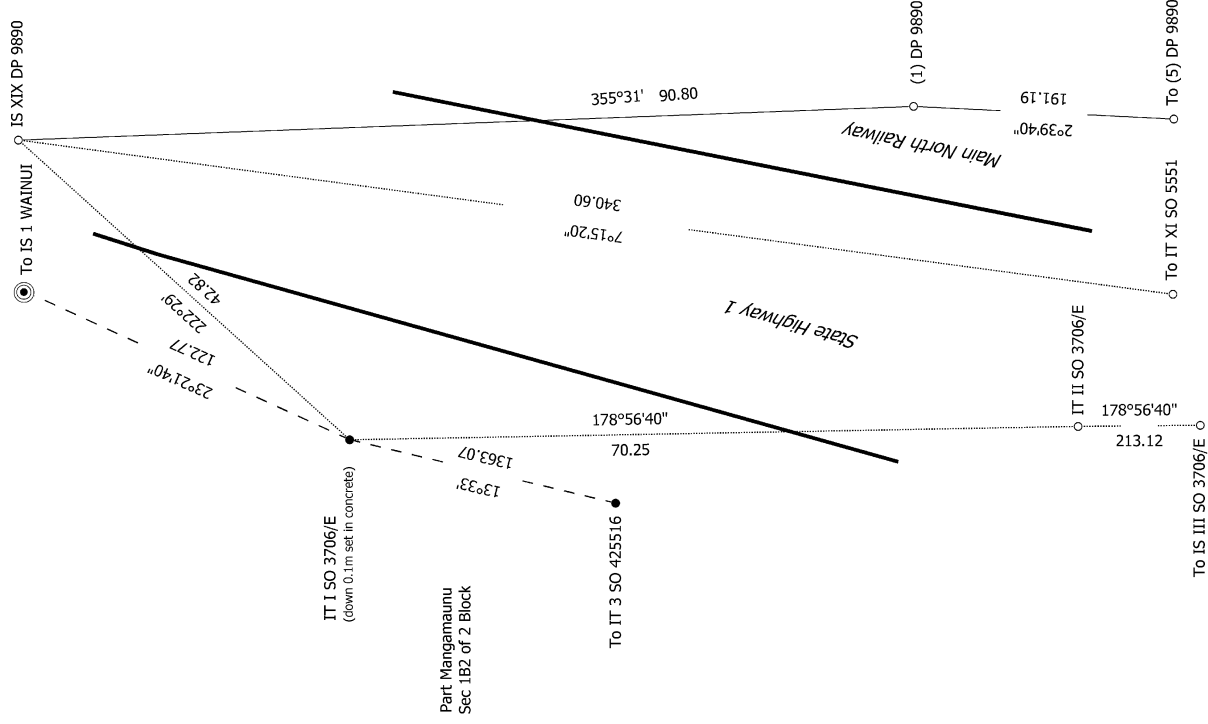
Surveyor: Vicki Leigh Webster
Firm: Beca Limited
Date of Survey: 23/03/2023

Sections 1 - 16

Land District: Marlborough
Digitally Generated Plan
Generated on: 03/07/2024 10:23am | Page 29 of 36



Diag. ADB

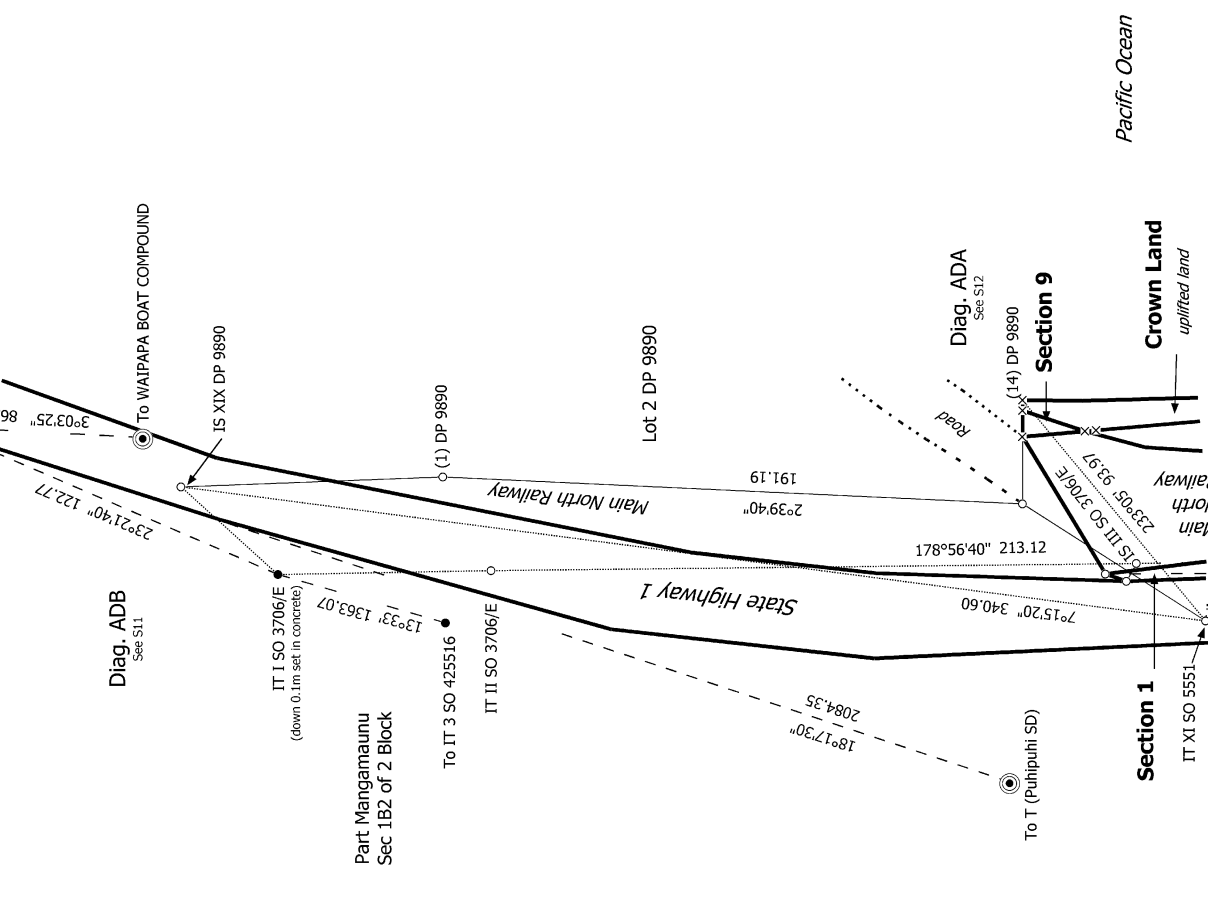


S 11/12

Record of Survey
SO 588048
Approved on: 3/01/2024

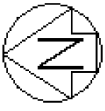
Surveyor: Vicki Leigh Webster
Firm: Beca Limited
Date of Survey: 23/03/2023

Diag. AD

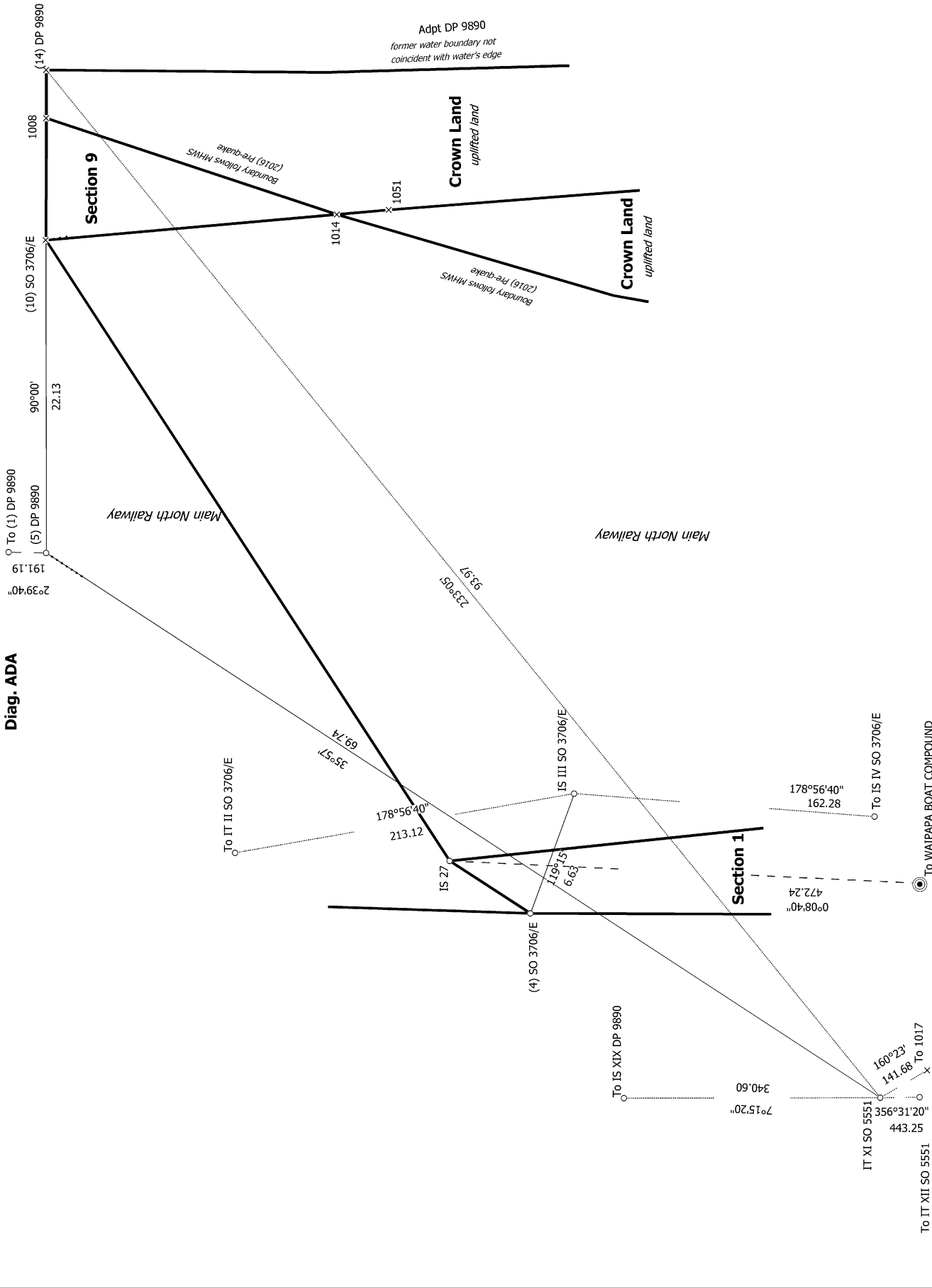


Sections 1 - 16

Land District: Marlborough
Digitally Generated Plan
Generated on: 03/01/2024 06:23am Page 30 of 36



Diag. ADA



S 12/12

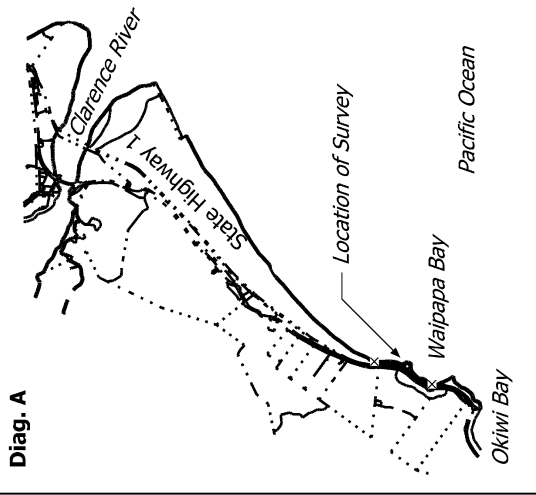
Record of Survey
 SO 588048
 Approved on: 3/01/2024

Surveyor: Vicki Leigh Webster
 Firm: Beca Limited
 Date of Survey: 23/03/2023

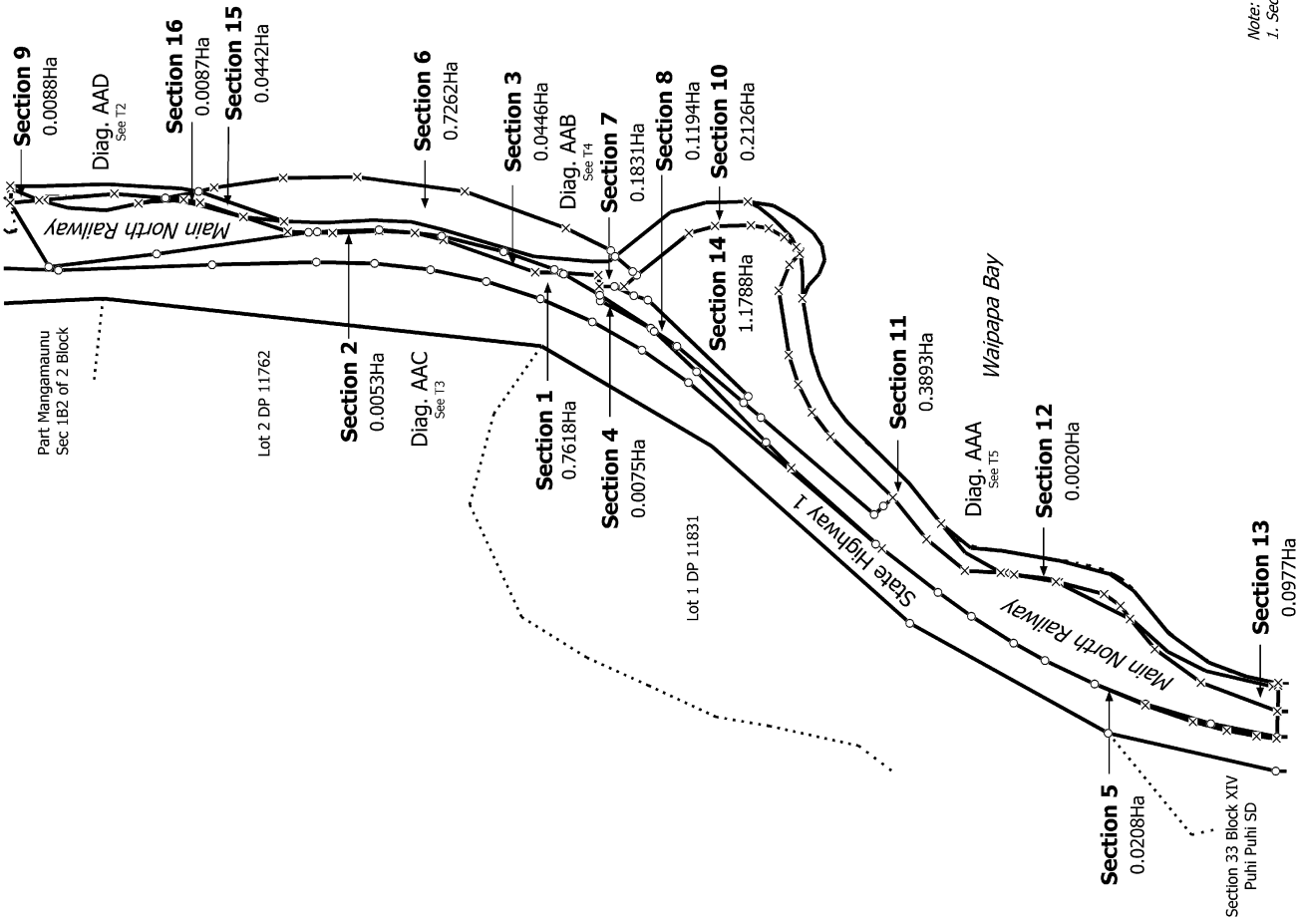
Sections 1 - 16

Land District: Marlborough

Digitally Generated Plan
 Generated on: 03/01/2024 10:23:01 Page 31 of 36



Diag. AA



Sections 1 - 16

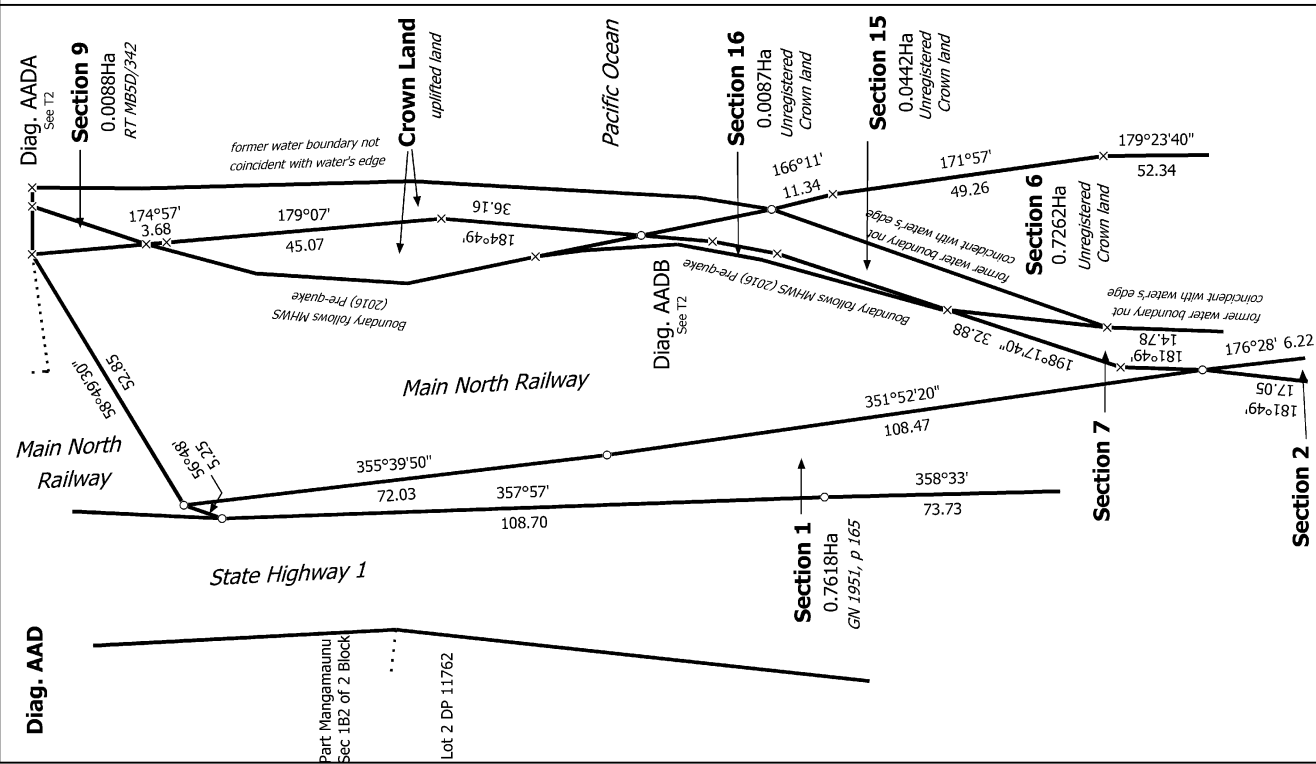
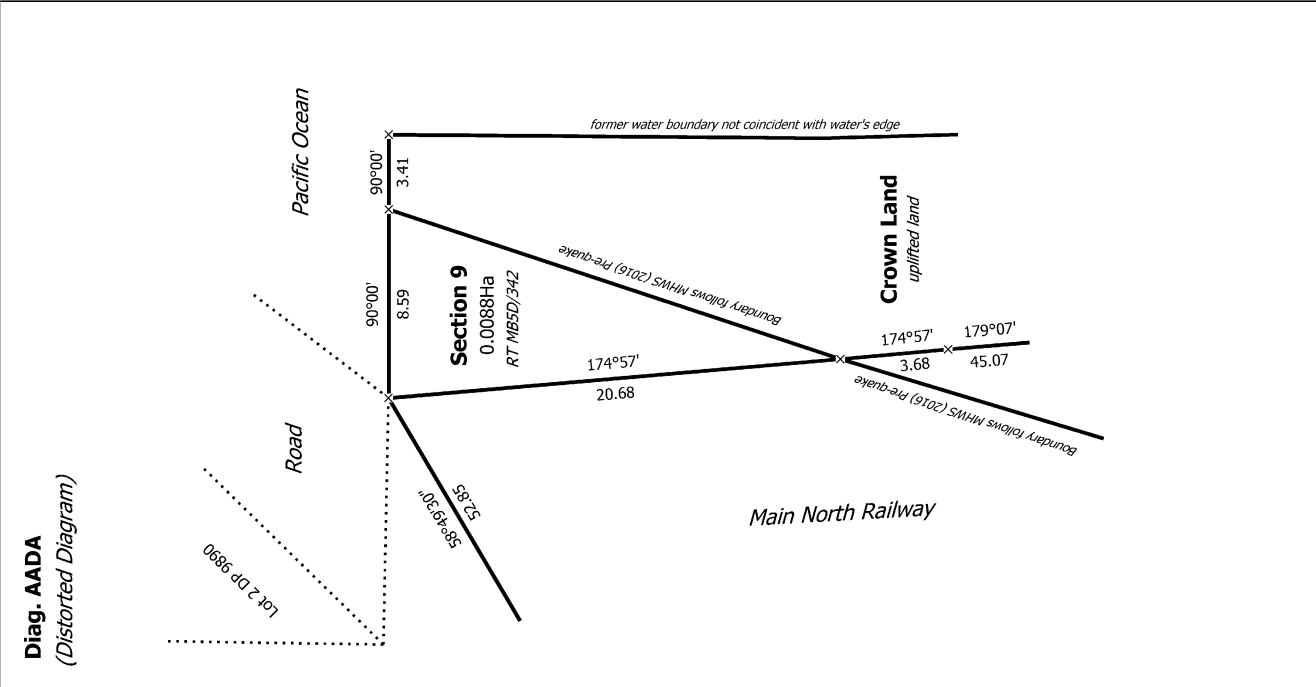
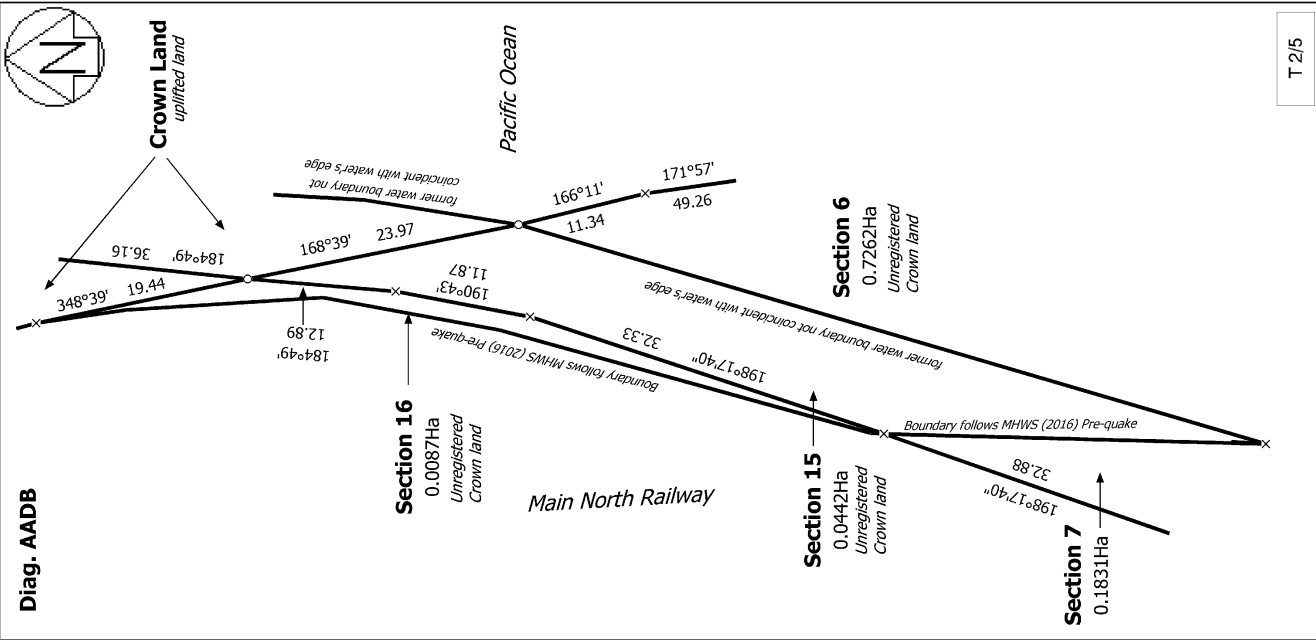
Note:
1. Section 14 is subject to Part 4A Conservation Act 1987

Land District: Marlborough

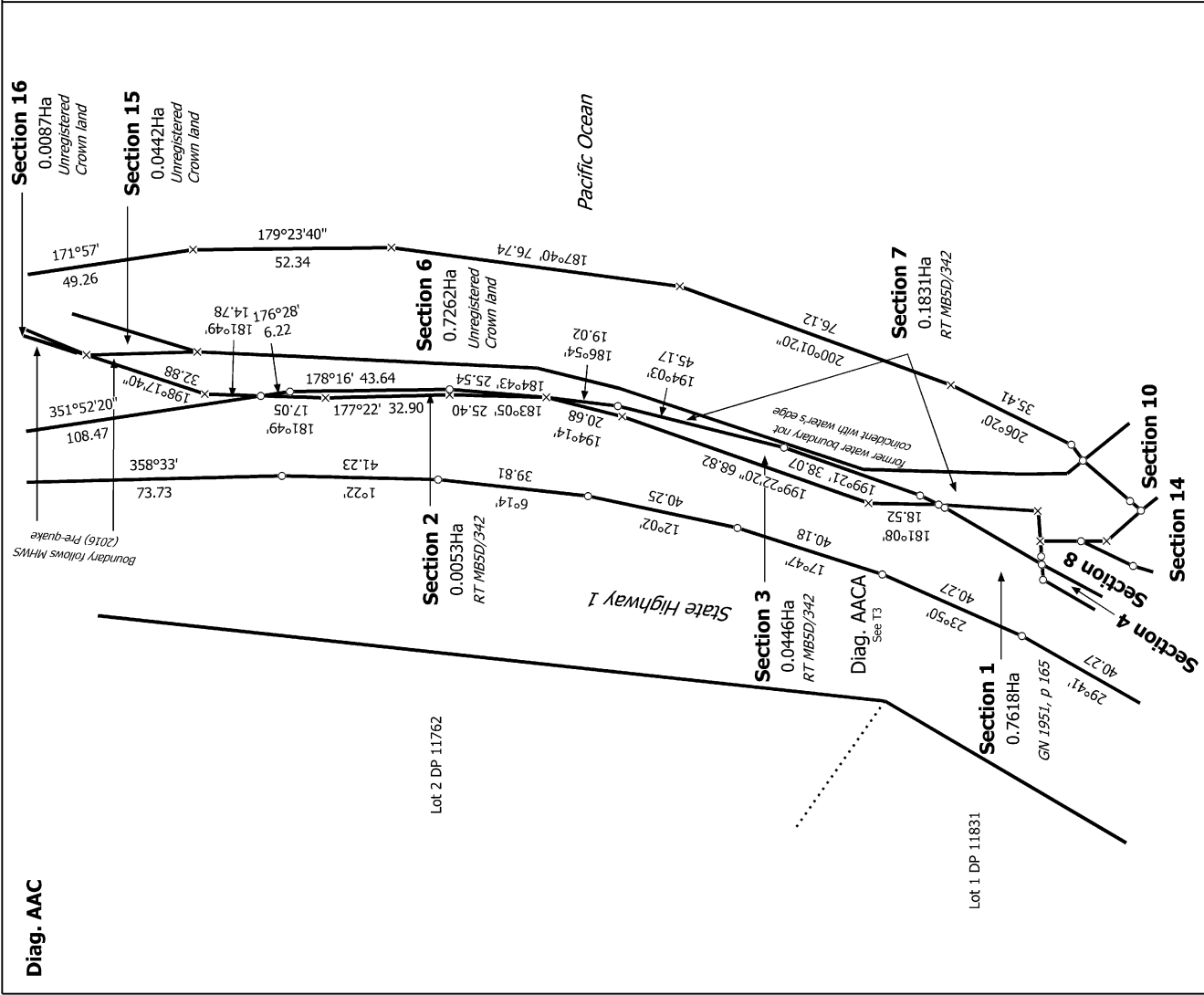
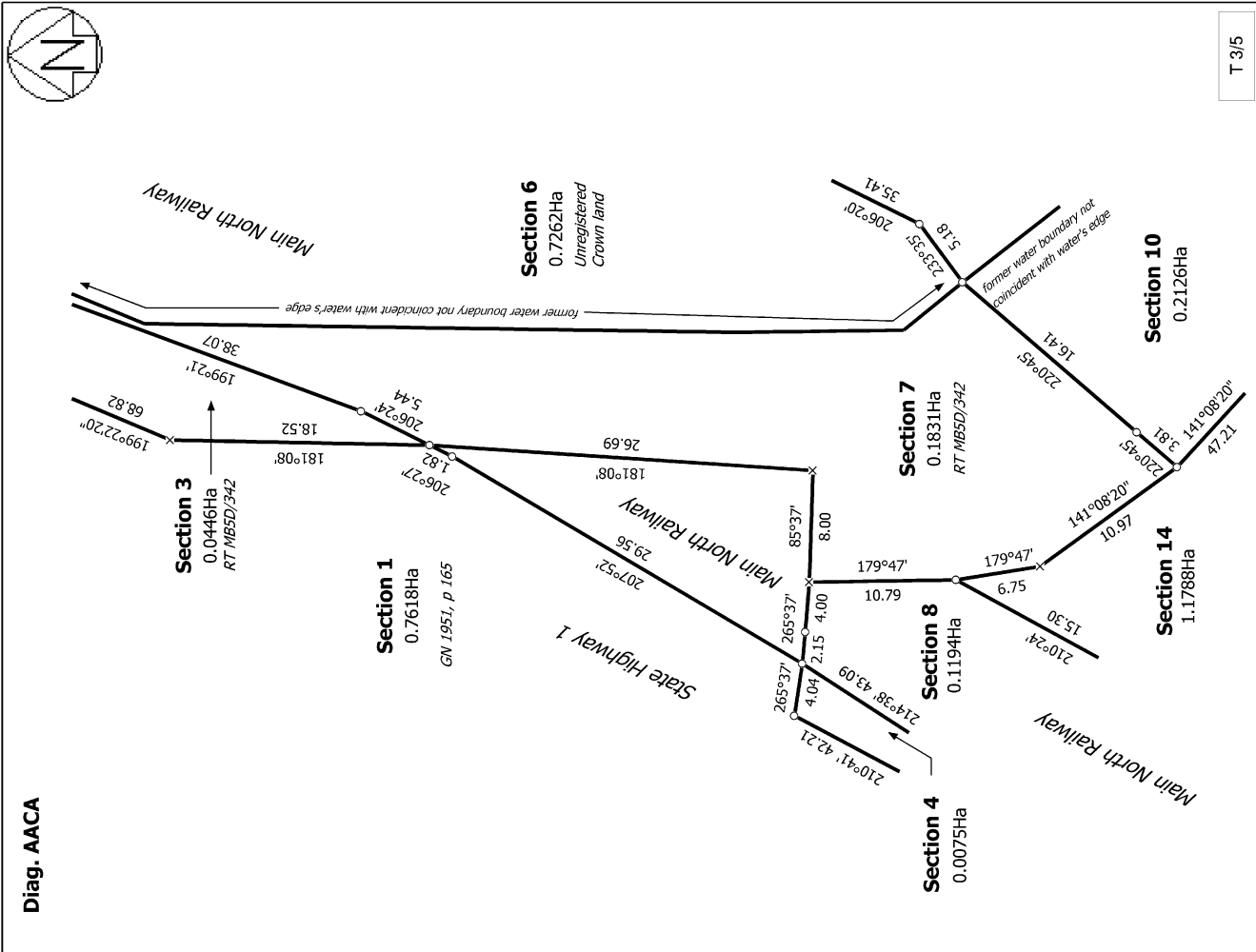
Digitally Generated Plan
Generated on: 03/01/2024 10:23am | Page 32 of 36

Surveyor: Vicki Leigh Webster
Firm: Becca Limited
Date of Survey: 23/03/2023

Record of Survey
SO 588048
Approved on: 3/01/2024

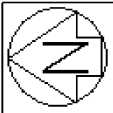


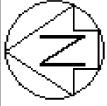
T 2/5	Record of Survey SO 588048 Approved on: 3/01/2024
Surveyor: Vicki Leigh Webster Firm: Beca Limited Date of Survey: 23/03/2023	Sections 1 - 16
Land District: Marlborough	Section 2
Digitally Generated Plan Generated on: 03/01/2024 06:23am Page 33 of 36	



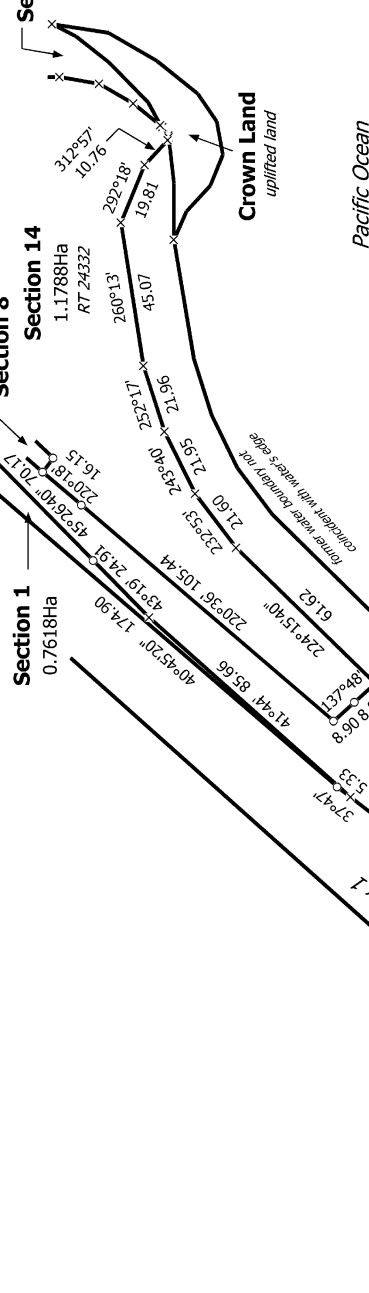
Diag. AAC **Diag. AACA**

<p>Land District: Marlborough</p> <p>Digitally Generated Plan</p> <p>Generated on: 03/07/2024 10:23am Page 34 of 36</p>	<p>Sections 1 - 16</p>	<p>Surveyor: Vicki Leigh Webster</p> <p>Firm: Becca Limited</p> <p>Date of Survey: 23/03/2023</p>	<p>Record of Survey</p> <p>SO 588048</p> <p>Approved on: 3/01/2024</p>
--	------------------------	---	---

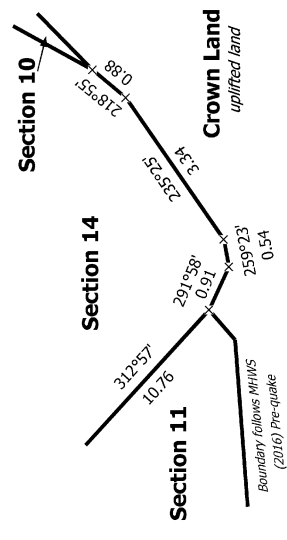




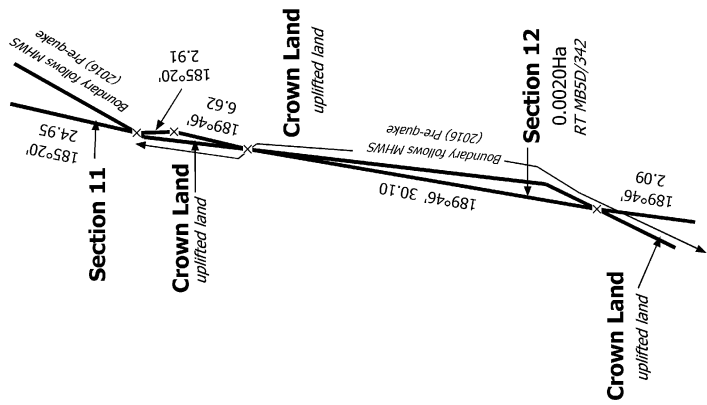
Diag. AAA



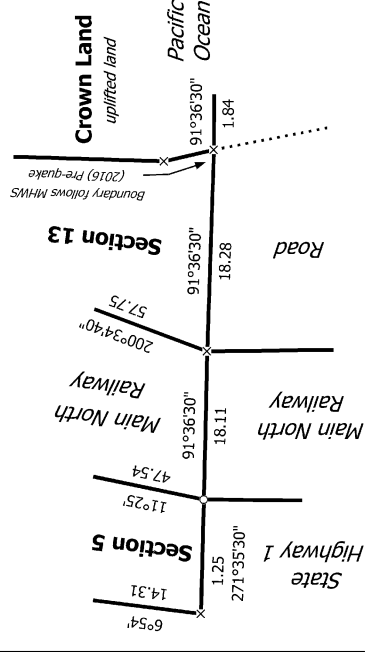
Diag. AABBB



Diag. AAAB



Diag. AAAAA



T 5/5

Land District: Marlborough

Digitally Generated Plan
Generated on: 03/01/2024 10:23am | Page 36 of 36

Sections 1 - 16

Surveyor: Vicki Leigh Webster
Firm: Beca Limited
Date of Survey: 23/03/2023

Record of Survey
SO 588048
Approved on: 3/01/2024