



Record of Survey - SO 585258

Survey Number SO 585258
Surveyor Reference N220107.00 North of Kotemaori
Surveyor Sheldon Grant McGuire
Survey Firm Definition Surveying Limited
Surveyor Declaration I Sheldon Grant McGuire, being a licensed cadastral surveyor, certify that--
(a) this dataset provided by me and its related survey are accurate, correct and in accordance with the Cadastral Survey Act 2002 and Cadastral Survey Rules 2021; and
(b) the survey was undertaken by me or under my personal direction.
Declared on 24 Mar 2023 10:02 AM

Survey Details

Dataset Description	Sections 1-3	Type	Survey
Purpose	Legalisation	Survey Class	Class B
Status	Approved as to Survey	Vertical Datum	None
Land District	Hawkes Bay		
Meridional Circuit	Hawkes Bay 2000		

Survey Dates

Surveyed Date	12/12/2022	Certified Date	24/03/2023
Submitted Date	24/03/2023 10:02:45	Survey Approval Date	28/03/2023
Deposit Date			

Referenced Surveys

Survey Number	Land District	Bearing Correction
SO 3481	Hawkes Bay	0°00'00"
SO 7962	Hawkes Bay	0°00'00"
SO 7629	Hawkes Bay	0°00'00"
SO 8455	Hawkes Bay	0°00'00"
LT 380793	Hawkes Bay	0°00'00"

Territorial Authorities

Wairoa District

Comprised In

RT HBP3/779

Created Parcels

Parcels	Parcel Intent	Area	RT Reference
Section 1 Survey Office Plan 585258	Legalisation	0.0278 Ha	
Section 2 Survey Office Plan 585258	Legalisation	0.1057 Ha	
Section 3 Survey Office Plan 585258	Fee Simple Title	301.4354 Ha	
Total Area		<u>301.5689 Ha</u>	

Mark and Vector

Survey Number SO 585258
Meridional Circuit Hawkes Bay 2000

From	To	Code	Bearing	Adpt Surv	Bearing Correction	Distance	Adpt Surv	Class
J 47	HA 70	ob0	54°36'42" M			3,442.12 M		
HA 70	J 52 SO 7962	ob1	116°42'26" M			2,310.27 M		
HA 70	J 49	ob2	214°13'50" M			825.83 M		
J 49	IT 1 SO 585258	ob3	59°36'20" M			281.29 M		
IT 1 SO 585258	IT 2 SO 585258	ob8	4°10'00" M			358.83 M		
IT 2 SO 585258	HA 70	ob21	47°00'30" M			267.76 M		
IT 1 SO 585258	PEG X SO 3481	ob9	213°59'30" M			213.86 M		
IT 1 SO 585258	DISK 6 SO 585258	ob10	171°24'50" M			196.06 M		
IT 1 SO 585258	DISK 7 SO 585258	ob11	169°54'10" M			140.95 M		
IT 1 SO 585258	DISK 8 SO 585258	ob12	154°48'30" M			56.91 M		
IT 1 SO 585258	DISK 9 SO 585258	ob13	97°33'00" M			20.50 M		
IT 1 SO 585258	DISK 10 SO 585258	ob14	77°36'00" M			20.44 M		
IT 1 SO 585258	DISK 11 SO 585258	ob15	21°40'00" M			51.43 M		
IT 1 SO 585258	DISK 12 SO 585258	ob16	11°52'00" M			84.44 M		
IT 2 SO 585258	DISK 15 SO 585258	ob22	178°07'20" M			79.71 M		
IT 2 SO 585258	IS 5 SO 7629	ob23	39°49'30" M			98.66 M		
IT 2 SO 585258	IS 6 SO 7629	ob24	41°27'00" M			187.16 M		
IT 2 SO 585258	IS 6A SO 7629	ob25	45°29'20" M			231.77 M		
IT 2 SO 585258	POST (16) SO 7629	ob26	121°11'00" M			19.44 M		
J 49	IS SO 2354	ob4	117°05'00" M	A SO 7962	0°00'00"	5.74 M	A SO 7962	
IS SO 2354	IS VII SO 3481	ob30	127°13'00" M	A SO 3481	0°00'00"	127.54 M	A SO 3481	
IS VII SO 3481	PEG X SO 3481	ob46	20°06'00" M	A SO 3481	0°00'00"	47.64 M	A SO 3481	
IT 1 SO 585258	IS SO 2354	ob17	238°36'30" M			278.27 M		
PEG X SO 3481	PEG 3 SO 585258	ob31	117°21'00" M	A SO 3481	0°00'00"	49.27 M	A SO 3481	
PEG 3 SO 585258	IB VIII SO 3481	ob32	114°01'00" M	A SO 3481	0°00'00"	109.09 M	A SO 3481	
IB VIII SO 3481	IS VI SO 3481	ob47	13°03'00" M	A SO 7629	0°00'00"	47.44 M	A SO 7629	
IS VI SO 3481	IS 1 SO 7629	ob49	358°42'40" M	A SO 7629	0°00'00"	71.30 M	A SO 7629	
IS 1 SO 7629	IS 2 SO 7629	ob51	0°15'20" M	A SO 7629	0°00'00"	177.61 M	A SO 7629	
IS 2 SO 7629	IT 3 SO 7629	ob53	359°03'10" M	A LT 380793	0°00'00"	142.92 M	A LT 380793	
IT 3 SO 7629	IT 4 SO 7629	ob56	2°09'10" M	A LT 380793	0°00'00"	117.03 M	A LT 380793	
IT 4 SO 7629	IS 5 SO 7629	ob58	23°30'00" M	A SO 7629	0°00'00"	134.16 M	A SO 7629	
IT 1 SO 585258	PEG 3 SO 585258	ob18	200°45'50" M			213.84 M		
IS 5 SO 7629	IS 5A SO 7629	ob42	43°15'50" M	A SO 7629	0°00'00"	44.64 M	A SO 7629	

Mark and Vector

Survey Number SO 585258

Meridional Circuit Hawkes Bay 2000

From	To	Code	Bearing	Adpt Surv	Bearing Correction	Distance	Adpt Surv	Class
IS 5A SO 7629	IS 6 SO 7629	ob64	43°15'50"	A SO 7629	0°00'00"	43.98 A	SO 7629	
IS 6 SO 7629	IS 6A SO 7629	ob43	61°48'30"	A SO 7629	0°00'00"	46.95 A	SO 7629	
IS 6A SO 7629	HA 70	ob44	56°40'00"	A SO 8455	0°00'00"	36.60 A	SO 8455	
IS 6A SO 7629	IT 7 SO 7629	ob45	61°48'30"	A SO 7629	0°00'00"	55.61 A	SO 7629	
IT 7 SO 7629	HA 70	ob65	251°32'00"	A SO 8455	0°00'00"	19.44 A	SO 8455	
J 49	IS 6 SO 7629	ob5	31°30'28"	A SO 7962	0°00'00"	751.25 A	SO 7962	
IB VIII SO 3481	PEG 4 SO 585258	ob48	16°16'00"	A SO 3481	0°00'00"	14.08 A	SO 3481	
IT 1 SO 585258	PEG 4 SO 585258	ob19	173°08'10"	M		232.50 M		
IS VI SO 3481	PEG (8) SO 7629	ob50	353°48'00"	A SO 7629	0°00'00"	28.01 A	SO 7629	
IS 1 SO 7629	POST (19) SO 7629	ob52	202°31'00"	A SO 7629	0°00'00"	2.00 A	SO 7629	
IS 2 SO 7629	POST (12) SO 7629	ob54	200°08'00"	A SO 7629	0°00'00"	39.69 A	SO 7629	
IS 2 SO 7629	POST (18) SO 7629	ob55	314°26'00"	A SO 7629	0°00'00"	17.91 A	SO 7629	
IT 3 SO 7629	POST (20) SO 7629	ob57	247°35'00"	A SO 7629	0°00'00"	1.13 A	SO 7629	
IT 4 SO 7629	POST (15) SO 7629	ob59	186°14'00"	A SO 7629	0°00'00"	38.81 A	SO 7629	
IT 4 SO 7629	POST (14) SO 7629	ob60	186°17'00"	A SO 7629	0°00'00"	21.52 A	SO 7629	
IT 4 SO 7629	POST (11) SO 7629	ob61	285°05'00"	A SO 7629	0°00'00"	26.60 A	SO 7629	
IT 4 SO 7629	POST (13) SO 7629	ob62	306°57'00"	A SO 7629	0°00'00"	29.01 A	SO 7629	
IT 4 SO 7629	POST (16) SO 7629	ob63	10°33'00"	A SO 7629	0°00'00"	37.90 A	SO 7629	
PEG 4 SO 585258	PEG 5 SO 585258	ob33	3°32'00"	A SO 7629	0°00'00"	31.54 C		Class B
PEG 5 SO 585258	PEG (8) SO 7629	ob66	3°32'00"	A SO 7629	0°00'00"	29.12 C		Class B
PEG (8) SO 7629	POST (19) SO 7629	ob76	0°54'00"	A SO 7629	0°00'00"	41.59 A	SO 7629	Class B
POST (19) SO 7629	POST (12) SO 7629	ob68	355°08'10"	A SO 7629	0°00'00"	142.70 A	SO 7629	Class B
POST (12) SO 7629	POST (18) SO 7629	ob69	1°00'00"	A SO 7629	0°00'00"	49.81 A	SO 7629	Class B
POST (18) SO 7629	PEG 13 SO 585258	ob70	4°07'50"	A SO 7629	0°00'00"	93.39 C		Class B
PEG 13 SO 585258	PEG 14 SO 585258	ob77	4°07'50"	A SO 7629	0°00'00"	7.55 C		Class B
PEG 14 SO 585258	POST (20) SO 7629	ob78	4°07'50"	A SO 7629	0°00'00"	29.33 C		Class B
POST (20) SO 7629	POST (15) SO 7629	ob71	0°54'00"	A SO 7629	0°00'00"	78.81 A	SO 7629	Class B

Mark and Vector

Survey Number SO 585258

Meridional Circuit Hawkes Bay 2000

From	To	Code	Bearing	Adpt Surv	Bearing Correction	Distance	Adpt Surv	Class
POST (15) SO 7629	POST (14) SO 7629	ob72	6°10'00"	A SO 7629	0°00'00"	17.29 A	SO 7629	Class B
POST (11) SO 7629	PEG 16 SO 585258	ob73	140°31'00"	A SO 7629	0°00'00"	33.23 C		Class B
PEG 16 SO 585258	POST (14) SO 7629	ob80	140°31'00"	A SO 7629	0°00'00"	3.46 C		Class B
POST (11) SO 7629	POST (13) SO 7629	ob74	13°22'00"	A SO 7629	0°00'00"	10.81 A	SO 7629	Class B
POST (13) SO 7629	POST (16) SO 7629	ob75	56°39'00"	A SO 7629	0°00'00"	36.06 A	SO 7629	Class B
IT 1 SO 585258	PEG 5 SO 585258	ob20	171°31'00"	M		201.55 M		
IT 2 SO 585258	PEG 13 SO 585258	ob27	179°32'50"	M		201.43 M		
IT 2 SO 585258	PEG 14 SO 585258	ob28	179°22'00"	M		193.90 M		
IT 2 SO 585258	PEG 16 SO 585258	ob29	175°33'40"	M		66.19 M		
PEG 5 SO 585258	DISK 6 SO 585258	ob67	355°16'00"	C		5.50 C		Class B
DISK 6 SO 585258	DISK 7 SO 585258	ob34	355°16'00"	C		55.29 C		Class B
DISK 7 SO 585258	DISK 8 SO 585258	ob35	359°41'00"	C		87.27 C		Class B
DISK 8 SO 585258	DISK 9 SO 585258	ob36	355°26'00"	C		48.96 C		Class B
DISK 9 SO 585258	DISK 10 SO 585258	ob37	357°03'00"	C		7.09 C		Class B
DISK 10 SO 585258	DISK 11 SO 585258	ob38	358°43'00"	C		43.42 C		Class B
DISK 11 SO 585258	DISK 12 SO 585258	ob39	357°20'00"	C		34.88 C		Class B
DISK 12 SO 585258	PEG 13 SO 585258	ob40	7°56'00"	C		74.52 C		Class B
PEG 14 SO 585258	DISK 15 SO 585258	ob79	0°14'00"	C		114.22 C		Class B
DISK 15 SO 585258	PEG 16 SO 585258	ob41	10°25'00"	C		13.91 C		Class B
J 49	PEG 3 SO 585258	ob6	109°03'40"	M		176.50 M		
J 49	PEG X SO 3481	ob7	105°52'30"	M		127.94 M		

Mark Name	Mark Condition	Description
IS 5 SO 7629		Down ~0.2m in grassed roadside drain, clear delineation in soil, rusted and weak
IS 6 SO 7629		Down ~0.3m in grassed verge, ~1.3m south-east of wooden post and wire fence

Mark and Vector

Survey Number SO 585258
Meridional Circuit Hawkes Bay 2000

Mark Name	Mark Condition	Description
IS 6A SO 7629		Down ~0.3m in grassed verge, clear delineation in soil, rusted and weak
IS SO 2354		Down ~0.1m in grassed verge behind gaurdail
IT 1 SO 585258		Down ~0.4m in grassed paddock atop knoll
IT 2 SO 585258		Down ~0.3m in grassed paddock
PEG 3 SO 585258		PEG IX SO 3481 Reinstated
PEG 4 SO 585258		PEG SO 3481 Reinstated
PEG X SO 3481		Proud in grassed embankment, nail in top
IT 3 SO 7629	Destroyed	
IT 7 SO 7629	Destroyed	
IB VIII SO 3481	Searched For and Not Found	
IS 1 SO 7629	Searched For and Not Found	
IS 2 SO 7629	Searched For and Not Found	
IS 5A SO 7629	Searched For and Not Found	
IS VI SO 3481	Searched For and Not Found	
IS VII SO 3481	Searched For and Not Found	
IT 4 SO 7629	Searched For and Not Found	
PEG (8) SO 7629	Searched For and Not Found	
POST (11) SO 7629	Searched For and Not Found	
POST (12) SO 7629	Searched For and Not Found	
POST (13) SO 7629	Searched For and Not Found	
POST (14) SO 7629	Searched For and Not Found	
POST (15) SO 7629	Searched For and Not Found	
POST (18) SO 7629	Searched For and Not Found	
POST (19) SO 7629	Searched For and Not Found	
POST (20) SO 7629	Searched For and Not Found	

***** End of Report *****



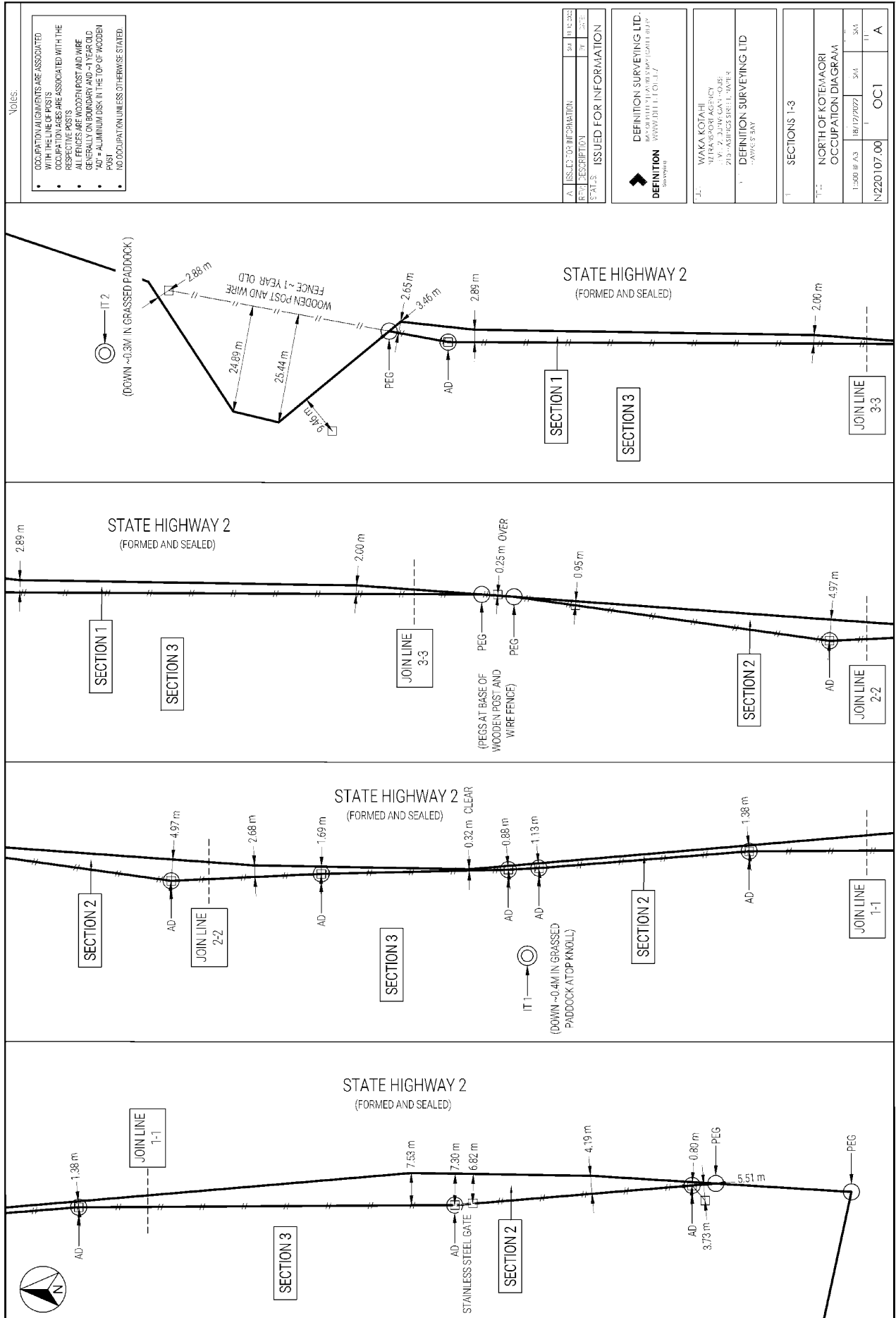
DEFINITION
Surveying

SO 585258

AREA SCHEDULE

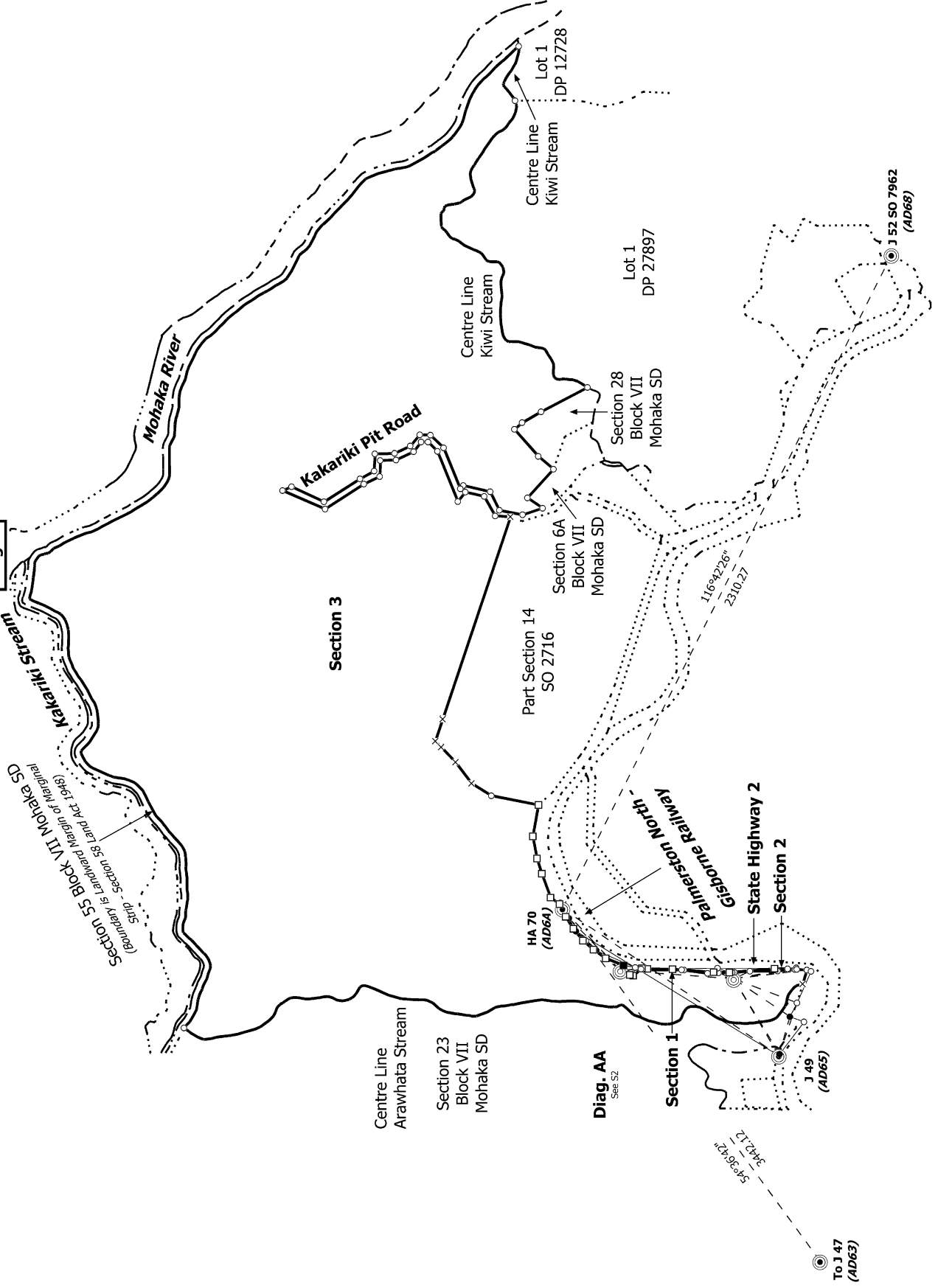
SCHEDULE OF AREAS			
LAND TO BE ACQUIRED FOR ROAD			
<u>SHOWN</u>	<u>DESCRIPTION</u>	<u>ESTATE RECORD</u>	<u>AREA</u>
SECTION 1	PART SECTION 26 SO 3481	HBP3/779	278m ²
SECTION 2	PART SECTION 26 SO 3481	HBP3/779	1057m ²

Occupation Diagram





Diag. A



S 1/3

Land District: Hawkes Bay

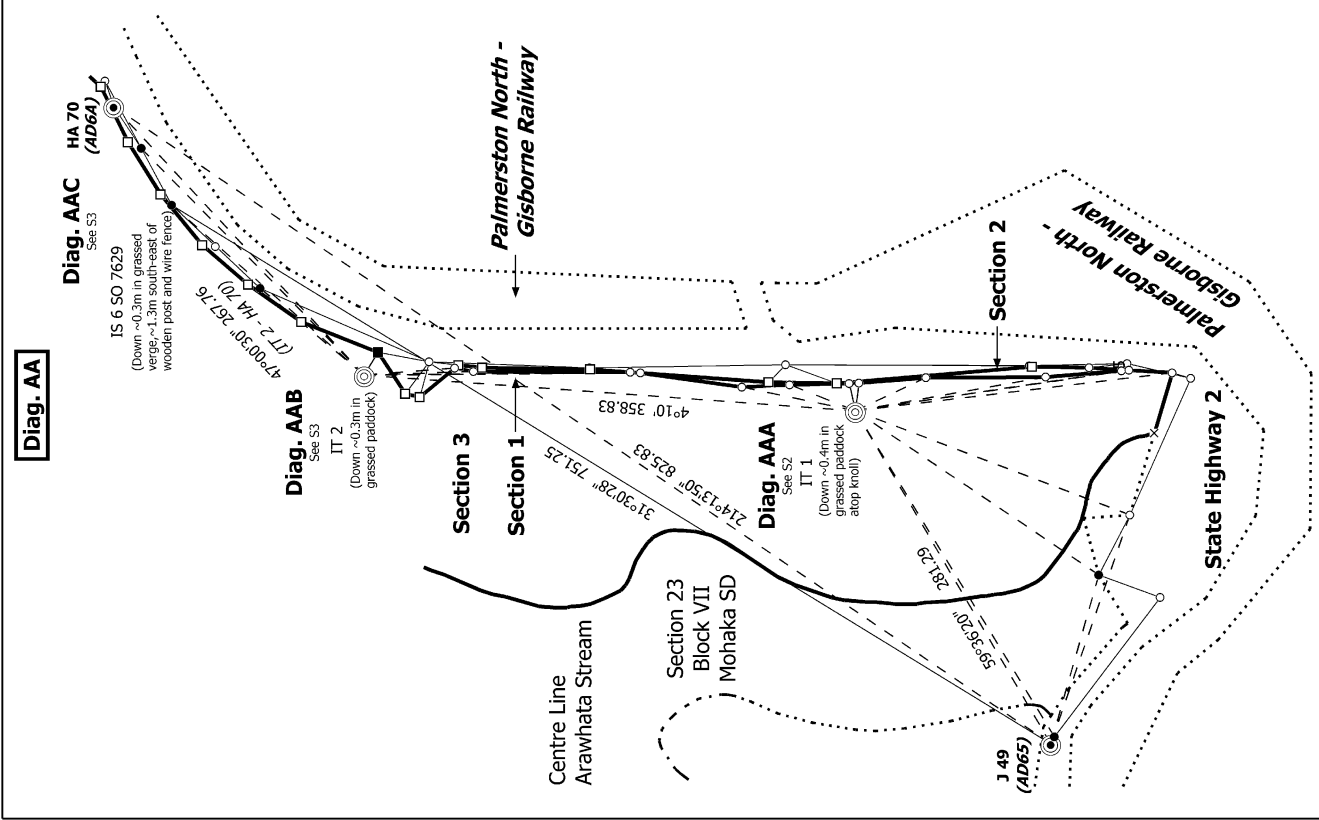
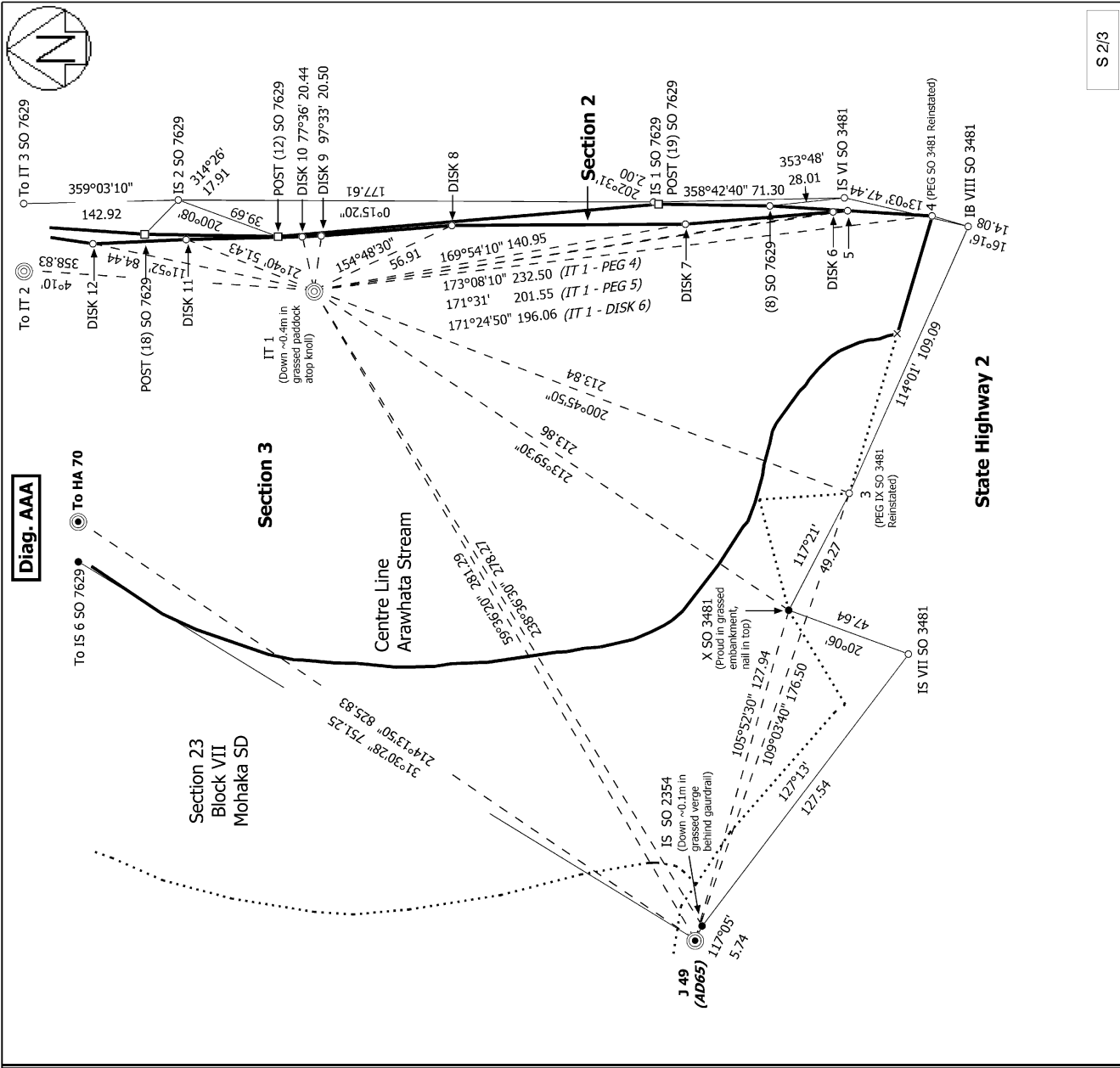
Digitally Generated Plan

Generated on: 28/03/2023 09:17am | Page 8 of 12

Sections 1-3

Surveyor: Sheldon Grant McGuire
 Firm: Definition Surveying Limited
 Date of Survey: 12/12/2022

Record of Survey
 SO 585258
 Approved on: 28/03/2023

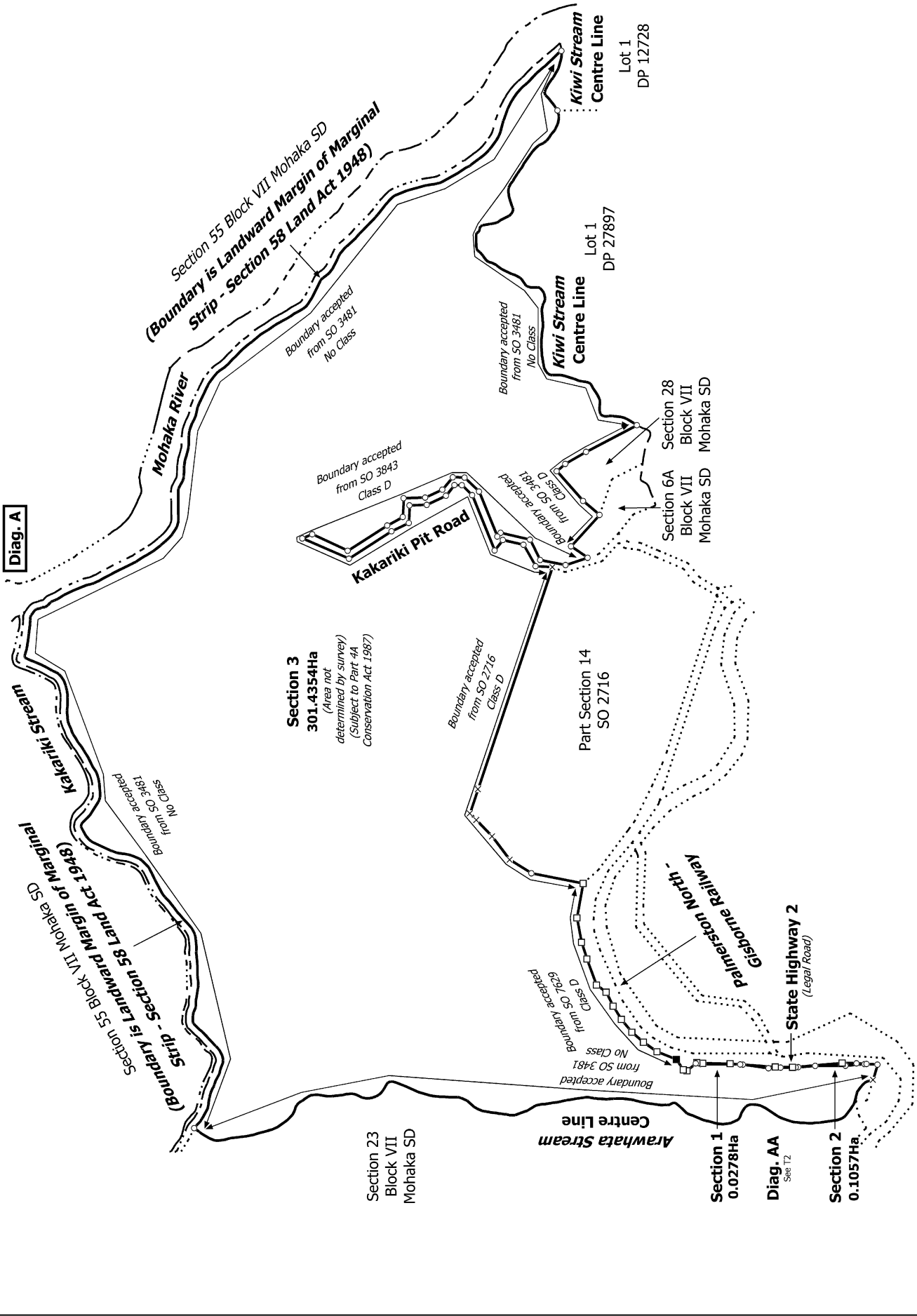
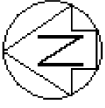


Record of Survey
SO 585258
Approved on: 28/03/2023

Surveyor: Sheldon Grant McGuire
Firm: Definition Surveying Limited
Date of Survey: 12/12/2022

Sections 1-3

Land District: Hawkes Bay
Digitally Generated Plan
Generated on: 28/03/2023 09:17:00 Page 9 of 12



Diag. A

T 1/2

Land District: Hawkes Bay

Digitally Generated Plan
Generated on: 28/03/2023 09:17am Page 11 of 12

Sections 1-3

Surveyor: Sheldon Grant McGuire
Firm: Definition Surveying Limited
Date of Survey: 12/12/2022

Record of Survey
SO 585258
Approved on: 28/03/2023

