



Record of Survey - SO 575662

Survey Number SO 575662
Surveyor Reference 3234282 Wolverton Culvert South
Surveyor Alexander Keith Harrington
Survey Firm Beca Limited
Surveyor Declaration I Alexander Keith Harrington, being a licensed cadastral surveyor, certify that--
(a) this dataset provided by me and its related survey are accurate, correct and in accordance with the Cadastral Survey Act 2002 and Cadastral Survey Rules 2021; and
(b) the survey was undertaken by me or under my personal direction.
Declared on 12 Sep 2023 11:02 AM

Survey Details

Dataset Description	Sections 1-4		
Purpose	Legalisation		
Status	Approved as to Survey	Type	Survey
Land District	North Auckland	Survey Class	Class A
Meridional Circuit	Mount Eden 2000	Vertical Datum	None

Survey Dates

Surveyed Date	22/04/2022	Certified Date	12/09/2023
Submitted Date	12/09/2023 11:02:51	Survey Approval Date	12/09/2023
Deposit Date			

Referenced Surveys

Survey Number	Land District	Bearing Correction
DP 113719	North Auckland	0°00'00"
DP 157720	North Auckland	0°00'00"
DP 124239	North Auckland	0°00'00"
DP 127599	North Auckland	0°00'00"
DP 344535	North Auckland	0°00'00"
DP 18989	North Auckland	0°00'00"

Territorial Authorities

Auckland Council

Comprised In

RT NA74B/891
RT NA74B/892
RT NA74B/894
RT NA94C/916
RT 182730

Created Parcels

Parcels	Parcel Intent	Area	RT Reference
Area F Survey Office Plan 575662	Easement		



Record of Survey - SO 575662

Created Parcels

Parcels	Parcel Intent	Area	RT Reference
Area X Survey Office Plan 575662	Covenants to be Revoked		
Area Y Survey Office Plan 575662	Covenants to be Revoked		
Area E Survey Office Plan 575662	Covenant - Land		
Area D Survey Office Plan 575662	Covenant - Land		
Section 1 Survey Office Plan 575662	Fee Simple Title	0.0646 Ha	
Section 2 Survey Office Plan 575662	Legalisation	0.0119 Ha	
Section 3 Survey Office Plan 575662	Legalisation	0.0138 Ha	
Section 4 Survey Office Plan 575662	Fee Simple Title	0.1405 Ha	
Total Area		<u>0.2308 Ha</u>	

Mark and Vector

Survey Number SO 575662
 Meridional Circuit Mount Eden 2000

From	To	Code	Bearing	Adpt Surv	Bearing Correction	Distance	Adpt Surv	Class
ALP II DP 397892	RM 5 SO 484994	ob0	348°20'30" M			96.48 M		
RM 5 SO 484994	ALP 2 SO 418187	ob1	273°18'30" M			188.93 M		
ALP 2 SO 418187	ALP 1 SO 418187	ob2	334°22'20" M			2.28 M		
ALP 1 SO 418187	LP DP 69284	ob3	282°00'00" M			43.52 M		
LP DP 69284	IS IV DP 344535	ob4	161°56'15" M			162.49 M		
IS IV DP 344535	ALMK C DP 127599	ob5	231°05'15" M			46.12 M		
ALMK C DP 127599	RM A DP 127599	ob18	216°58'00" M			19.93 M		
RM A DP 127599	RM D DP 127599	ob21	76°26'20" M			68.35 M		
RM D DP 127599	ALP II DP 397892	ob24	69°54'10" M			194.53 M		
RM A DP 127599	AP I SO 575662	ob22	23°50'30" M			61.46 M		
AP I SO 575662	IS IV DP 344535	ob98	116°11'30" M			25.65 M		
IS IV DP 344535	IS VI DP 344535	ob6	335°54'00" A	DP 344535	0°00'00"	22.94 A	DP 344535	
IS VI DP 344535	IS V DP 344535	ob25	61°38'20" A	DP 344535	0°00'00"	21.48 A	DP 344535	
IS V DP 344535	IS I DP 344535	ob29	61°38'20" A	DP 344535	0°00'00"	12.11 A	DP 344535	
IS I DP 344535	IT III DP 344535	ob26	188°41'20" A	DP 344535	0°00'00"	36.98 A	DP 344535	
IT III DP 344535	IS IV DP 344535	ob28	268°40'00" A	DP 344535	0°00'00"	14.62 A	DP 344535	
IS I DP 344535	SM 7120 SO 49300	ob27	45°51'00" A	DP 344535	0°00'00"	105.65 A	DP 344535	
SM 7120 SO 49300	IS VII DP 124239	ob30	230°29'12" A	DP 344535	0°00'00"	147.53 A	DP 344535	
IS VII DP 124239	IS DP 344535	ob31	240°25'00" A	DP 344535	0°00'00"	10.58 A	DP 344535	
IS DP 344535	IS VI DP 344535	ob34	61°38'20" A	DP 344535	0°00'00"	20.07 A	DP 344535	
IS VII DP 124239	PEG (1) DP 344535	ob32	198°37'00" A	DP 344535	0°00'00"	6.38 A	DP 344535	
PEG (1) DP 344535	PEG 7 SO 575662	ob35	57°54'00" A	DP 18989	0°00'00"	2.21 C		Class AD
PEG 7 SO 575662	PEG (2) DP 344535	ob87	57°54'00" A	DP 18989	0°00'00"	26.80 C		Class A
PEG (2) DP 344535	PEG (3) DP 344535	ob36	147°54'00" A	DP 344535	0°00'00"	15.50 A	DP 344535	Class A
PEG (3) DP 344535	PEG (4) DP 344535	ob37	237°54'00" A	DP 344535	0°00'00"	1.70 A	DP 344535	Class A
PEG (4) DP 344535	PEG (5) DP 344535	ob38	147°54'00" A	DP 344535	0°00'00"	2.70 A	DP 344535	Class A
PEG (5) DP 344535	PEG (6) DP 344535	ob39	237°54'00" A	DP 344535	0°00'00"	3.90 A	DP 344535	Class A

Mark and Vector

Survey Number SO 575662

Meridional Circuit Mount Eden 2000

From	To	Code	Bearing	Adpt Surv	Bearing Correction	Distance	Adpt Surv	Class
PEG (6) DP 344535	PEG (7) DP 344535	ob40	147°54'00"	A DP 344535	0°00'00"	10.40 A	DP 344535	Class A
PEG (7) DP 344535	IT III DP 344535	ob41	339°44'00"	A DP 344535	0°00'00"	1.65 A	DP 344535	
IS VII DP 124239	IS II DP 113719	ob33	237°06'30"	A DP 127599	0°00'00"	17.15 A	DP 127599	
IS II DP 113719	IS XII DP 127599	ob43	237°06'30"	A DP 127599	0°00'00"	16.59 A	DP 127599	
IS XII DP 127599	SS 2252 SO 48491	ob45	237°06'30"	A DP 127599	0°00'00"	40.44 A	DP 127599	
SS 2252 SO 48491	RM A DP 127599	ob46	123°22'20"	A DP 127599	0°00'00"	38.64 A	DP 127599	
IS II DP 113719	PEG (1) DP 124239	ob44	156°20'00"	A DP 124239	0°00'00"	4.07 A	DP 124239	
PEG (1) DP 124239	PEG (2) DP 127599	ob47	237°51'00"	A DP 127599	0°00'00"	16.43 A	DP 127599	Class A
PEG (2) DP 127599	PEG (3) DP 124239	ob49	237°51'00"	A DP 127599	0°00'00"	19.29 A	DP 127599	Class A
PEG (3) DP 124239	IT VII DP 113719	ob50	237°51'00"	A DP 113719	0°00'00"	3.66 A	DP 113719	
IT VII DP 113719	SS 2252 SO 48491	ob52	248°47'30"	A DP 113719	0°00'00"	17.36 A	DP 113719	
PEG (3) DP 124239	PEG (4) DP 124239	ob51	195°58'00"	A DP 127599	0°00'00"	5.45 A	DP 127599	Class A
PEG (4) DP 124239	PEG (5) DP 124399	ob53	154°05'15"	A DP 127599	0°00'00"	9.70 A	DP 127599	Class A
PEG (5) DP 124399	SS 2252 SO 48491	ob54	284°35'30"	A DP 127599	0°00'00"	22.76 A	DP 127599	
PEG (5) DP 124399	PEG (6) DP 124239	ob55	154°05'15"	A DP 127599	0°00'00"	13.76 A	DP 127599	Class A
PEG (6) DP 124239	RM A DP 127599	ob56	126°37'00"	A DP 127599	0°00'00"	5.27 A	DP 127599	
PEG (6) DP 124239	PEG (7) DP 124399	ob57	64°05'00"	A DP 127599	0°00'00"	14.63 A	DP 127599	Class A
PEG (7) DP 124399	ALMK C DP 127599	ob59	25°31'00"	A DP 127599	0°00'00"	7.07 A	DP 127599	
UNMK (4) DP 113719	PEG (8) DP 124399	ob102	64°05'00"	A DP 127599	0°00'00"	3.53 C		Class A
PEG (8) DP 124399	ALMK C DP 127599	ob60	270°03'30"	A DP 127599	0°00'00"	10.06 A	DP 127599	
RM A DP 127599	LP B DP 127599	ob23	59°32'20"	A DP 127599	0°00'00"	37.40 A	DP 127599	
LP B DP 127599	RM D DP 127599	ob62	94°55'30"	A DP 127599	0°00'00"	34.33 A	DP 127599	
PEG (8) DP 124399	PEG (9) DP 124239	ob61	64°05'00"	A DP 127599	0°00'00"	8.29 A	DP 127599	Class A
PEG (9) DP 124239	PEG (10) DP 124239	ob64	90°30'00"	A DP 127599	0°00'00"	8.26 A	DP 127599	Class A

Mark and Vector

Survey Number SO 575662

Meridional Circuit Mount Eden 2000

From	To	Code	Bearing	Adpt Surv	Bearing Correction	Distance	Adpt Surv	Class
PEG (10) DP 124239	PEG (11) DP 124239	ob65	90°47'00"	A DP 127599	0°00'00"	8.00 A	DP 127599	Class A
PEG (11) DP 124239	PEG (12) DP 124239	ob66	0°49'00"	A DP 127599	0°00'00"	5.71 A	DP 127599	Class A
PEG (12) DP 124239	LP B DP 127599	ob67	245°49'00"	A DP 124239	0°00'00"	14.91 A	DP 124239	
PEG (7) DP 344535	PEG 15 SO 575662	ob42	147°54'00"	A DP 344535	0°00'00"	0.80 A	DP 344535	Class AD
PEG 15 SO 575662	IS IV DP 344535	ob69	276°53'10"	M		15.72 M		
PEG (12) DP 124239	PEG 6 SO 575662	ob68	0°49'00"	A DP 127599	0°00'00"	1.16 A	DP 127599	Class A
PEG 6 SO 575662	IS IV DP 344535	ob71	6°09'00"	M		18.77 M		
PEG (1) DP 124239	PEG 1 SO 575662	ob48	57°51'00"	A DP 127599	0°00'00"	2.50 C		Class A
PEG 1 SO 575662	UNMK (16) DP 127599	ob83	57°51'00"	A DP 127599	0°00'00"	3.54 C		Class AD
UNMK (16) DP 127599	IS IV DP 344535	ob72	104°57'00"	C		26.37 C		
ALMK C DP 127599	ALMK (1) DP 127599	ob19	14°20'00"	A DP 127599	0°00'00"	7.34 A	DP 127599	
ALMK (1) DP 127599	ALMK (2) DP 127599	ob73	6°20'00"	A DP 127599	0°00'00"	3.71 A	DP 127599	Class A
ALMK (2) DP 127599	ALMK (3) DP 127599	ob74	309°14'00"	A DP 127599	0°00'00"	3.91 A	DP 127599	Class A
ALMK (3) DP 127599	ALMK (4) DP 127599	ob76	268°04'00"	A DP 127599	0°00'00"	2.75 A	DP 127599	Class A
ALMK (4) DP 127599	ALMK (5) DP127599	ob77	334°26'30"	A DP 127599	0°00'00"	3.31 A	DP 127599	Class A
ALMK (5) DP127599	PEG (2) DP 127599	ob78	334°26'30"	A DP 127599	0°00'00"	8.50 A	DP 127599	Class A
ALMK (2) DP 127599	PEG 3 SO 575662	ob75	64°05'00"	A DP 127599	0°00'00"	18.27 C		Class A
PEG 3 SO 575662	PEG 1 DP 127599	ob95	64°05'00"	A DP 127599	0°00'00"	0.83 C		Class A
PEG 1 DP 127599	IS II DP 113719	ob79	317°25'20"	A DP 127599	0°00'00"	23.30 A	DP 127599	
PEG 1 DP 127599	UNMK (17) DP 127599	ob80	64°05'00"	A DP 127599	0°00'00"	5.20 A	DP 127599	Class AD
UNMK (17) DP 127599	IS IV DP 344535	ob81	57°20'00"	C		14.01 C		
PEG 1 SO 575662	DISK 2 SO 575662	ob84	146°10'00"	C		14.81 C		Class A
DISK 2 SO 575662	PEG 3 SO 575662	ob85	133°00'00"	C		4.13 C		Class A
PEG 15 SO 575662	DISK 14 SO 575662	ob70	209°31'00"	C		1.39 C		Class AD

Mark and Vector

Survey Number SO 575662

Meridional Circuit Mount Eden 2000

From	To	Code	Bearing	Adpt Surv	Bearing Correction	Distance	Adpt Surv	Class
DISK 14 SO 575662	PEG 13 SO 575662	ob88	241°37'00"	C		5.22 C		Class A
PEG 13 SO 575662	PEG 12 SO 575662	ob89	256°34'00"	C		3.22 C		Class A
PEG 12 SO 575662	PEG 11 SO 575662	ob90	268°38'00"	C		5.02 C		Class A
PEG 11 SO 575662	PEG 10 SO 575662	ob91	286°55'00"	C		6.01 C		Class A
PEG 10 SO 575662	PEG 9 SO 575662	ob92	305°41'00"	C		5.17 C		Class A
PEG 9 SO 575662	PEG 8 SO 575662	ob93	315°43'00"	C		5.07 C		Class A
PEG 8 SO 575662	PEG 7 SO 575662	ob94	325°45'00"	C		11.87 C		Class A
ALMK C DP 127599	ALMK (6) DP 127599	ob20	65°22'00"	A	DP 127599	0°00'00"	4.75 A DP 127599	
ALMK (6) DP 127599	ALMK (1) DP 127599	ob97	334°05'00"	A	DP 127599	0°00'00"	5.70 A DP 127599	Class A
IS IV DP 344535	RM A DP 127599	ob7	226°50'00"	M		65.62 M		
PEG 3 SO 575662	PEG 4 SO 575662	ob96	130°15'00"	C		1.56 C		Class A
PEG 4 SO 575662	PEG 5 SO 575662	ob86	121°14'00"	C		12.91 C		Class AD
PEG 5 SO 575662	PEG 6 SO 575662	ob82	104°25'00"	C		3.07 C		Class AD
AP I SO 575662	PEG 1 SO 575662	ob99	220°27'00"	M		8.41 M		
AP I SO 575662	DISK 2 SO 575662	ob100	171°32'00"	M		18.91 M		
AP I SO 575662	PEG 7 SO 575662	ob101	85°04'00"	M		5.05 M		
IS IV DP 344535	PEG 8 SO 575662	ob8	279°46'00"	M		11.47 M		
IS IV DP 344535	PEG 9 SO 575662	ob9	257°46'00"	M		7.95 M		
IS IV DP 344535	PEG 10 SO 575662	ob10	217°12'00"	M		5.90 M		
IS IV DP 344535	PEG 11 SO 575662	ob11	161°17'00"	M		6.81 M		
IS IV DP 344535	PEG 12 SO 575662	ob12	131°18'00"	M		9.59 M		
IS IV DP 344535	PEG 13 SO 575662	ob13	118°21'00"	M		11.74 M		
IS IV DP 344535	DISK 14 SO 575662	ob14	101°43'00"	M		15.24 M		
IS IV DP 344535	PEG 5 SO 575662	ob15	195°34'00"	M		18.58 M		

Mark and Vector

Survey Number SO 575662

Meridional Circuit Mount Eden 2000

From	To	Code	Bearing	Adpt Surv	Bearing Correction	Distance	Adpt Surv	Class
IS IV DP 344535	PEG 4 SO 575662	ob16	235°02'00"	M		19.55 M		
IS IV DP 344535	PEG 3 SO 575662	ob17	239°22'00"	M		20.01 M		
PEG (7) DP 124399	UNMK (4) DP 113719	ob58	64°05'00"	A DP 127599	0°00'00"	11.04 C		Class A
PEG (9) DP 124239	UNMK (1) DP 113719	ob63	64°05'40"	A DP 113719	0°00'00"	6.59 C		Class A
UNMK (1) DP 113719	UNMK (2) DP 113719	ob103	333°52'00"	A DP 113719	0°00'00"	1.50 A	DP 113719	Class A
UNMK (2) DP 113719	UNMK (3) DP 113719	ob104	244°05'40"	A DP 113719	0°00'00"	18.41 A	DP 113719	Class A
UNMK (3) DP 113719	UNMK (4) DP 113719	ob105	153°51'30"	A DP 113719	0°00'00"	1.50 A	DP 113719	Class A



Mark and Vector

Survey Number SO 575662

Meridional Circuit Mount Eden 2000

From	To	Code	Chord Bearing	Arc Length	Radius	Adpt Surv
ALMK (6) DP 127599	PEG (8) DP 124399	ob106	109°08'00"	6.75	4.30 A	DP 127599

Mark Name	Mark Condition	Description
AP I SO 575662		Flush in Concrete

*** End of Report ***

SO 575662 Schedule of Easements

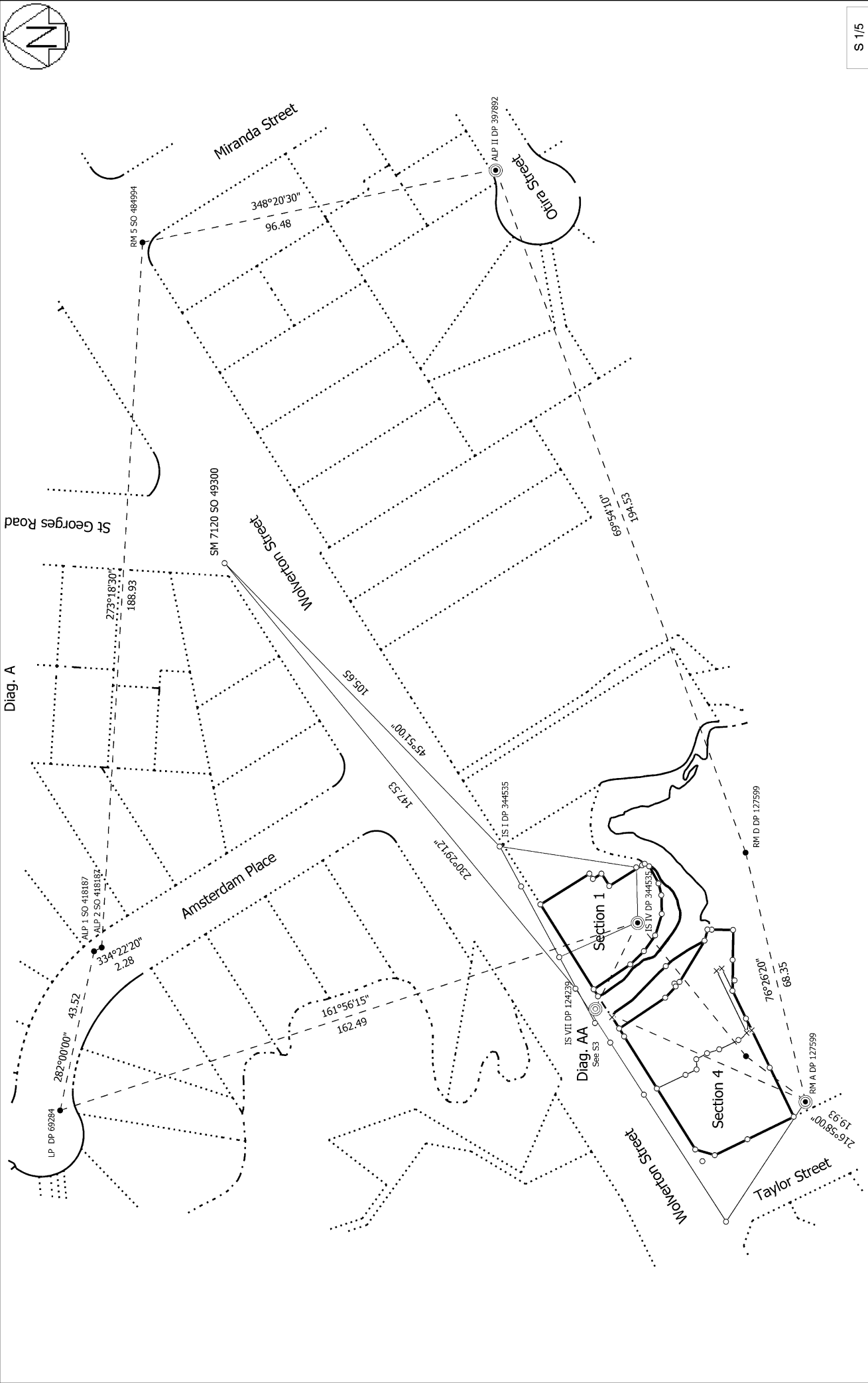
Schedule of Existing Easements			
Purpose	Shown (previously shown as)	Servient Tenement (Burdened Land)	Document ID
Right to Drain Water	F (B on DP 113719)	Section 4	B661394.4

Schedule of Existing Easements and Covenants to be Partially Extinguished			
Purpose	Shown (previously shown as)	Servient Tenement (Burdened Land)	Document ID
Land Covenant	X (E on DP 157720)	Lot 1 DP 127599	B910475.18 B910475.19 B910475.21 C520154.2
Land Covenant	Y (D on DP 127599)	Lot 1 DP 127599	B910475.18 B910475.19 B910475.21 C520154.2

NOTE: Areas D & E are subject to existing Land Covenants (Doc ID B910475.18, B910475.19, B910475.21 & C520154.2)

Schedule of Areas SO 575662

Land to be Set Apart for Use in Connection With a Road			
Shown	Description	Comprised in	Area
Section 2	Lot 1 DP 344535	182730	0.0119Ha
Section 3	Lot 1 DP 127599	NA74B/891 NA74B/892 NA74B/894 NA94C/916	0.0138Ha



S 1/5

Record of Survey
SO 575662
Approved on: 12/09/2023

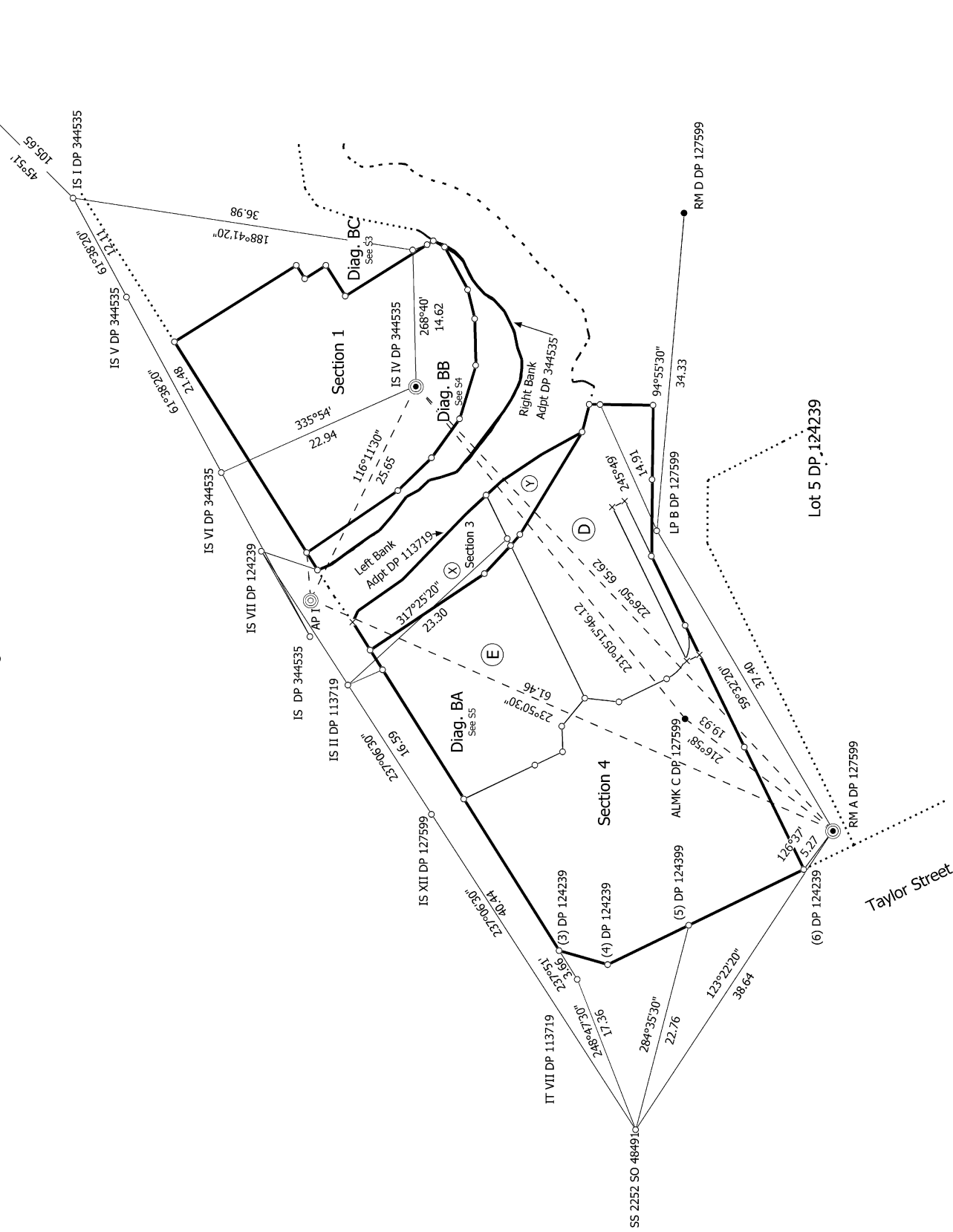
Surveyor: Alexander Keith Harrington
Firm: Beca Limited
Date of Survey: 22/04/2022

Sections 1-4

Land District: North Auckland
Digitally Generated Plan
Generated on: 12/09/2023 12:27:01 Page 12 of 13

Diag. B

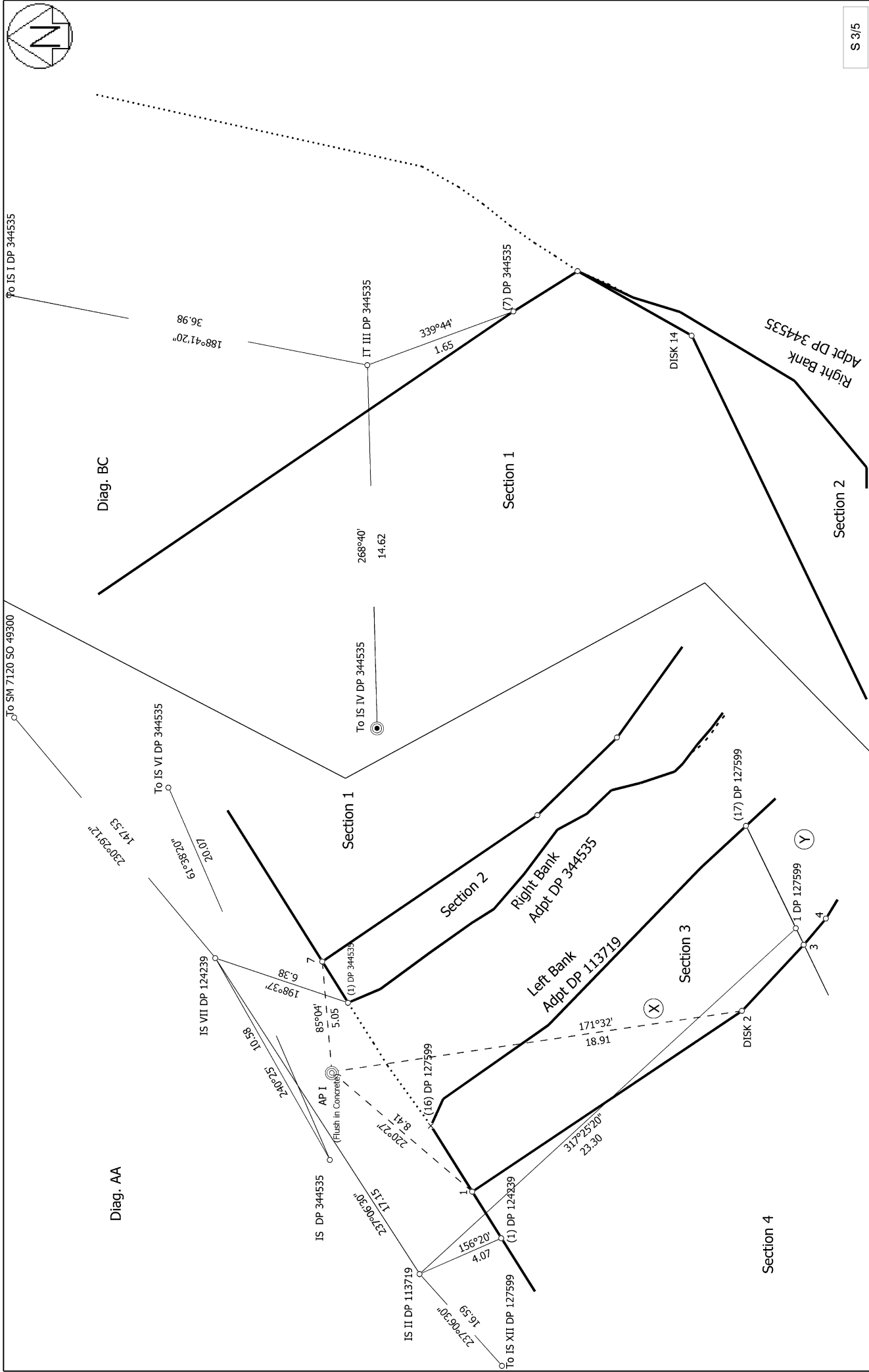
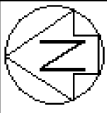
To SM 7120 SO 49300



Sections 1-4

Surveyor: Alexander Keith Harrington
 Firm: Becca Limited
 Date of Survey: 22/04/2022

Record of Survey
 SO 575662
 Approved on: 12/09/2023

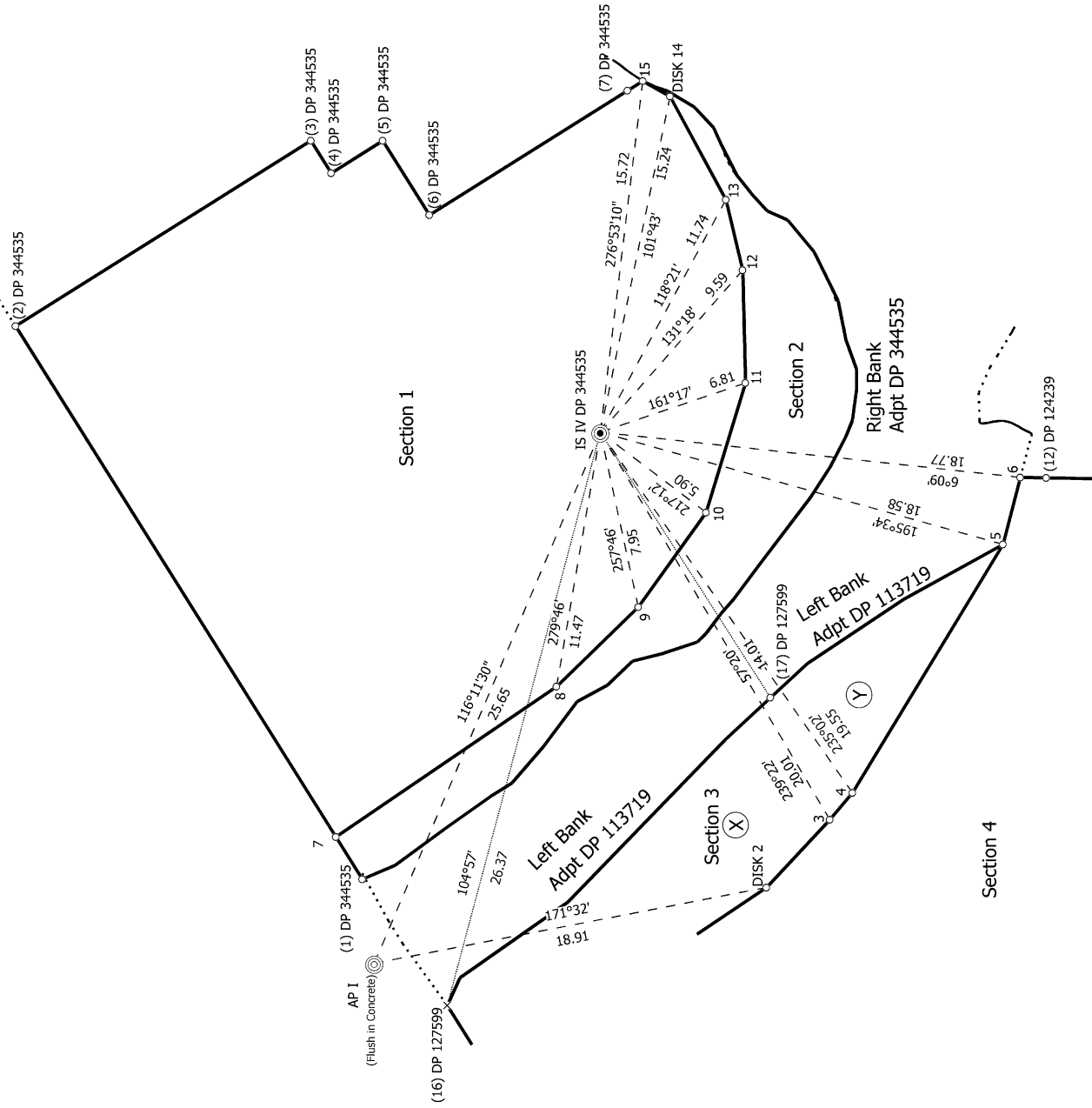


Record of Survey
 SO 575662
 Approved on: 12/09/2023

Surveyor: Alexander Keith Harrington
 Firm: Beca Limited
 Date of Survey: 22/04/2022

Sections 1-4

Diag. BB



S 4/5

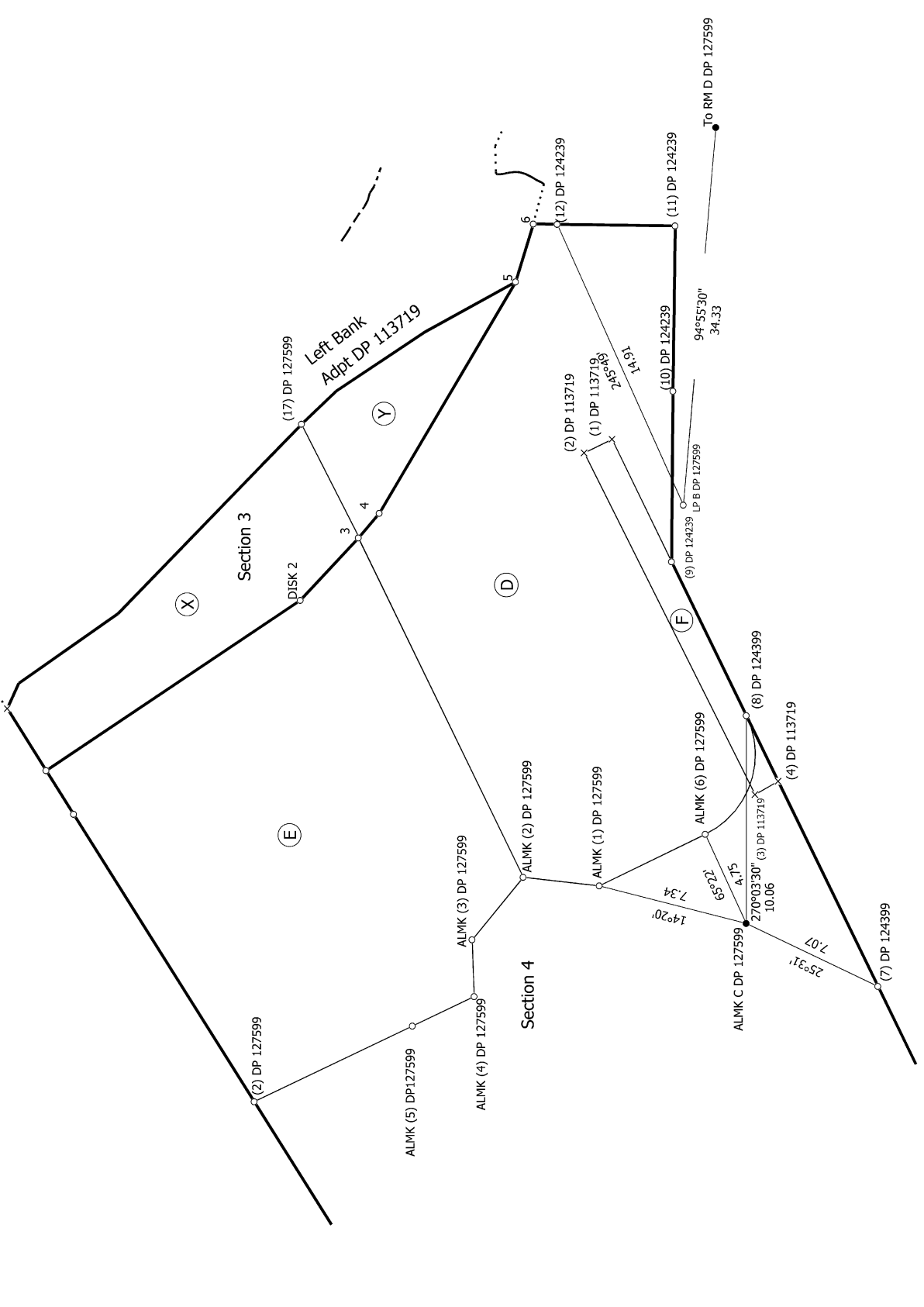
Sections 1-4

Surveyor: Alexander Keith Harrington
Firm: Beca Limited
Date of Survey: 22/04/2022

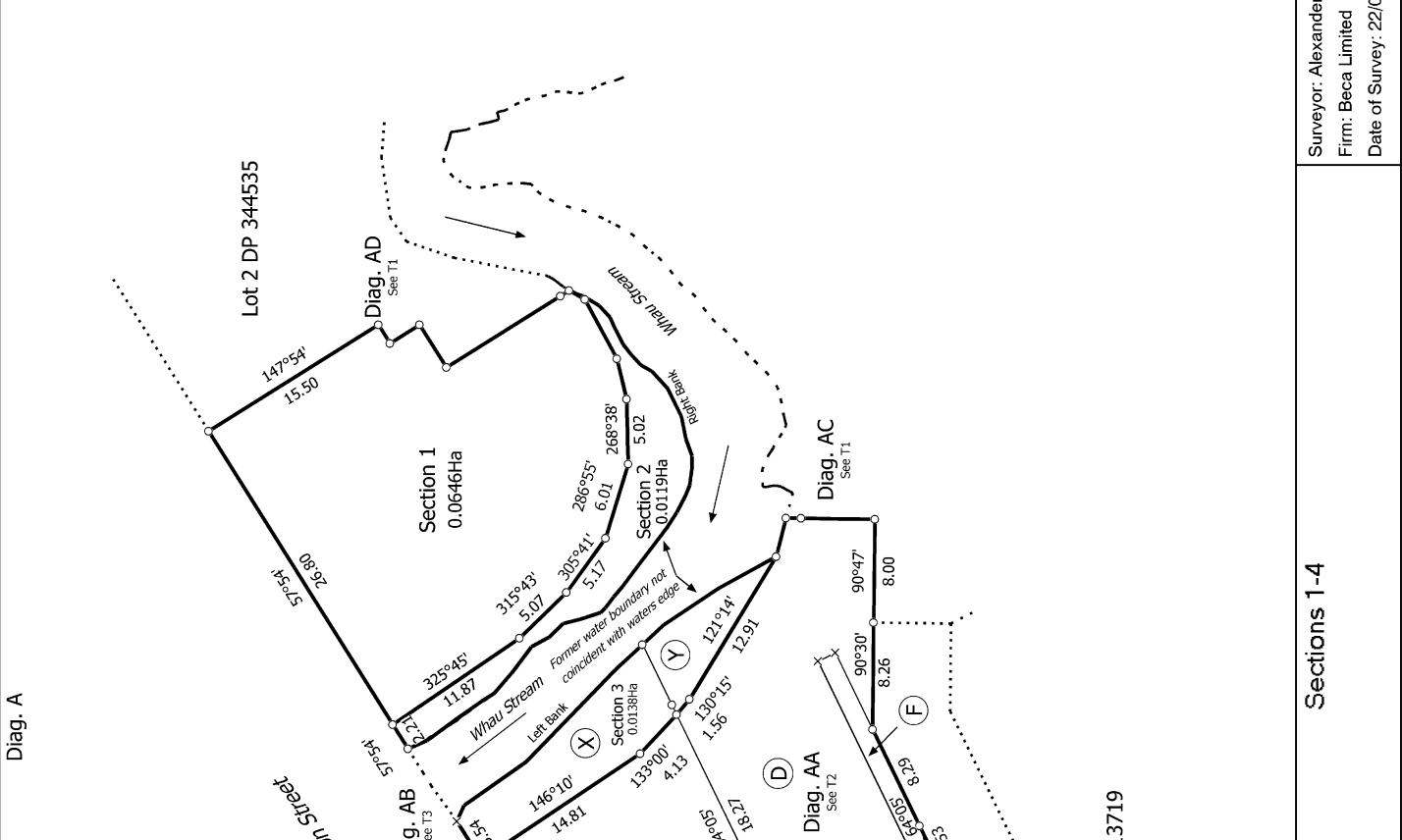
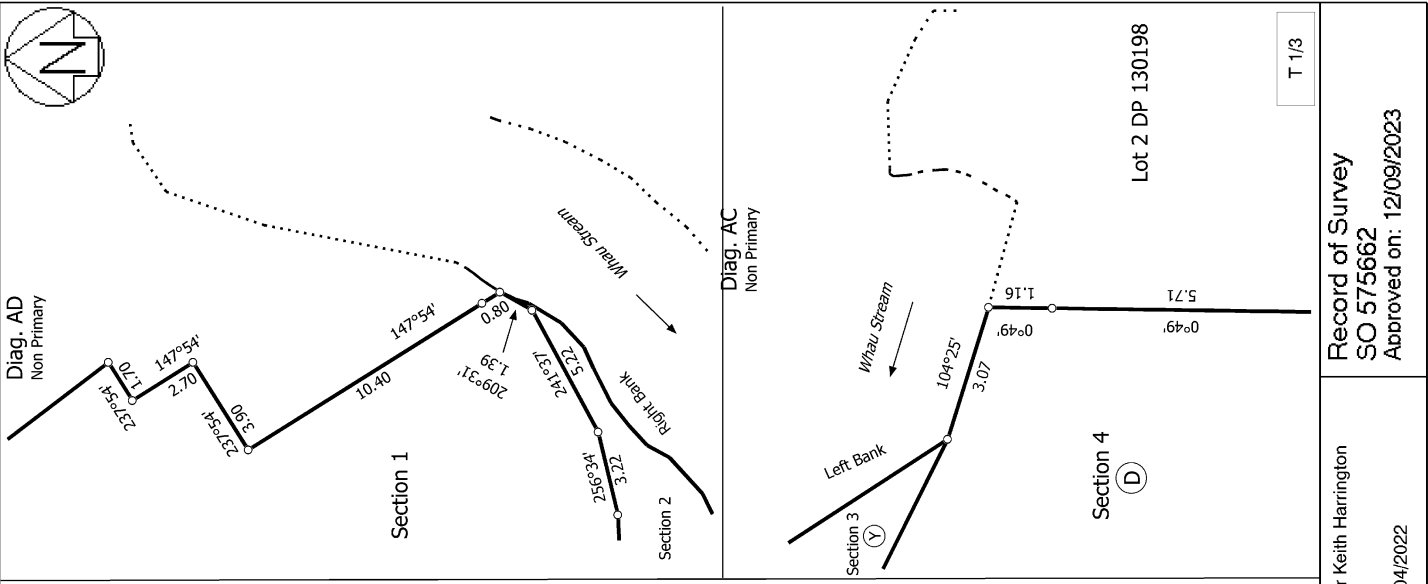
Record of Survey
SO 575662
Approved on: 12/09/2023



Diag. BA



<p>Land District: North Auckland</p> <p>Digitally Generated Plan</p> <p>Generated on: 12/09/2023 12:27:01 Page 16 of 19</p>	<p>Sections 1-4</p>	<p>Surveyor: Alexander Keith Harrington</p> <p>Firm: Beca Limited</p> <p>Date of Survey: 22/04/2022</p>	<p>Record of Survey</p> <p>SO 575662</p> <p>Approved on: 12/09/2023</p>
--	----------------------------	---	---



Notes:
Areas E, D, X and Y are land covenants in the secondary layer
Area F is an easement in the tertiary layer

Record of Survey
SO 575662
Approved on: 12/09/2023

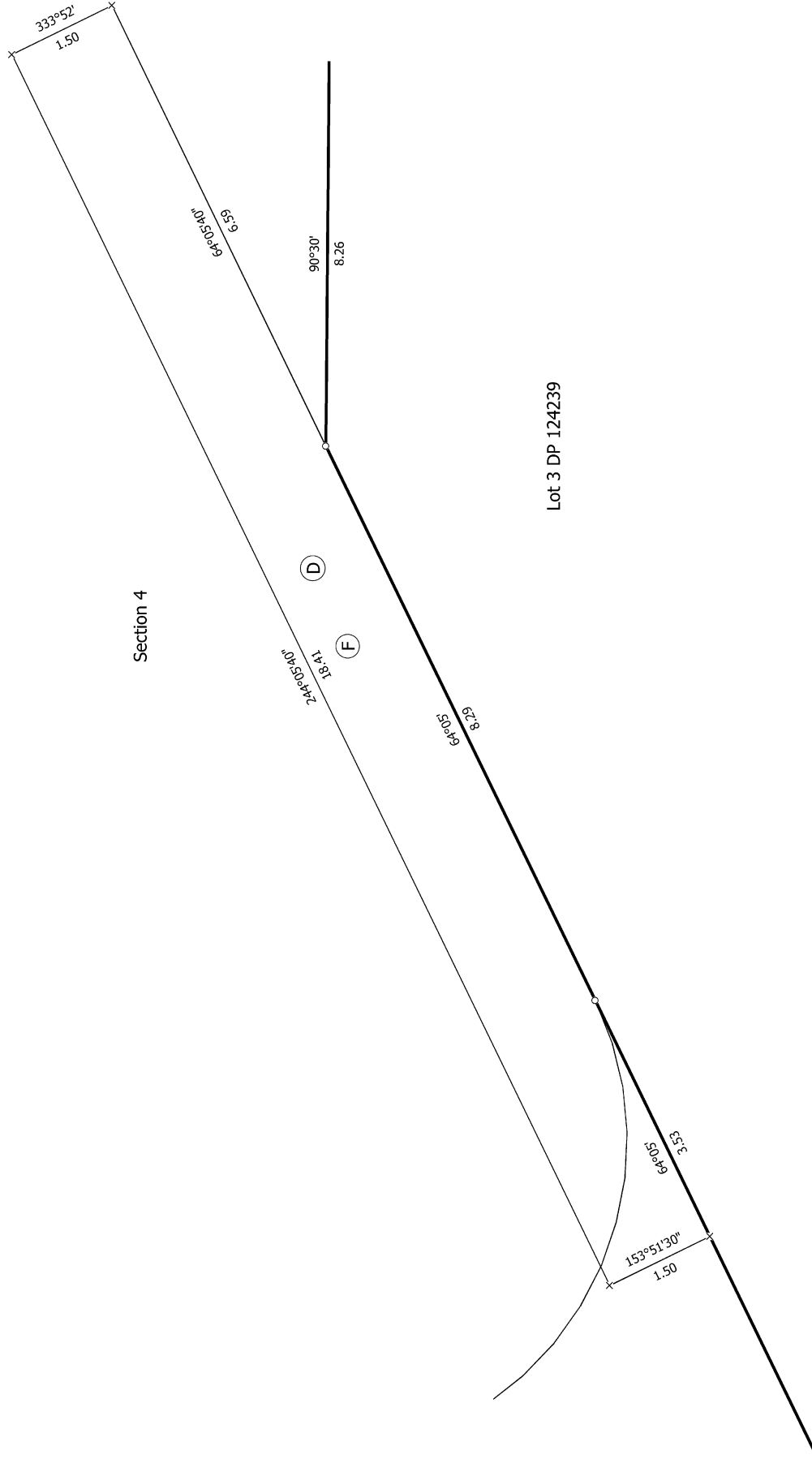
Surveyor: Alexander Keith Harrington
Firm: Becca Limited
Date of Survey: 22/04/2022

Sections 1-4

Land District: North Auckland
Digitally Generated Plan
Generated on: 12/09/2023 12:27:00 Page 17 of 19

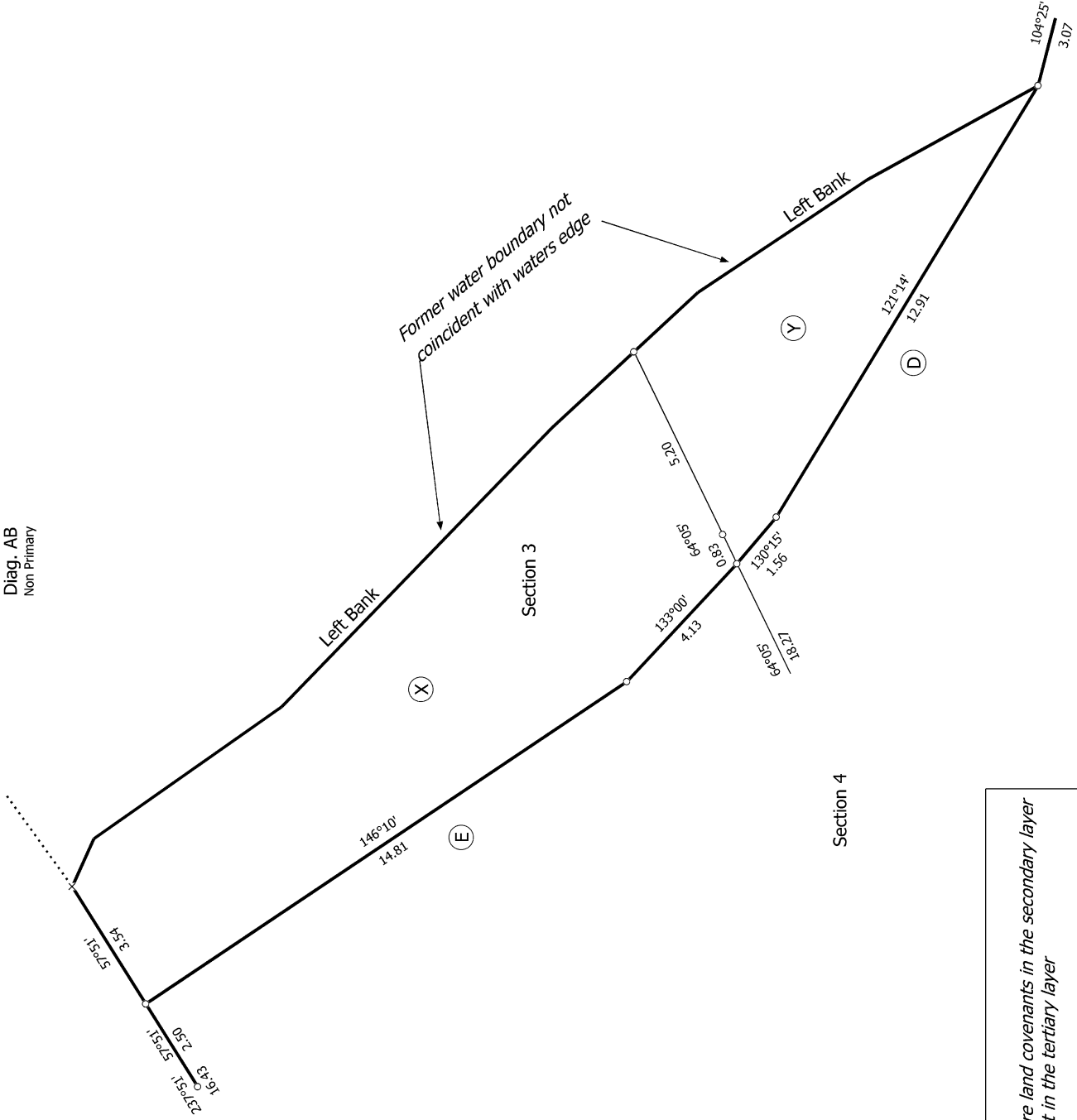
Diag. AA
Non Primary

Notes:
Areas E, D, X and Y are land covenants in the secondary layer
Area F is an easement in the tertiary layer





Diag. AB
Non Primary



Notes:
 Areas E, D, X and Y are land covenants in the secondary layer
 Area F is an easement in the tertiary layer

T 3/3

Land District: North Auckland

Digitally Generated Plan
Generated on: 12/09/2023 12:27:00 PM Page 19 of 19

Sections 1-4

Surveyor: Alexander Keith Harrington
Firm: Beca Limited
Date of Survey: 22/04/2022

Record of Survey
SO 575662
Approved on: 12/09/2023