



Record of Survey - LT 600165

Survey Number LT 600165
Surveyor Reference NRS265 Garrett & Bryant
Surveyor Nigel Hugh Ronald Ross
Survey Firm Nigel Ross Surveyor
Surveyor Declaration I Nigel Hugh Ronald Ross, being a licensed cadastral surveyor, certify that--
(a) this dataset provided by me and its related survey are accurate, correct and in accordance with the Cadastral Survey Act 2002 and Cadastral Survey Rules 2021; and
(b) the survey was undertaken by me or under my personal direction.
Declared on 23 Jan 2024 11:30 AM

Survey Details

Dataset Description Lots 1 & 2 Being a Subdivision of Allotment 1 and Pt Sec 2 Town of Rawene
Purpose LT Subdivision
Status Approved as to Survey
Land District North Auckland
Meridional Circuit Mount Eden 2000

Type	Survey
Survey Class	Class A
Vertical Datum	None

Survey Dates

Surveyed Date	20/12/2023	Certified Date	23/01/2024
Submitted Date	23/01/2024 11:30:07	Survey Approval Date	15/02/2024
Deposit Date			

Referenced Surveys

Survey Number	Land District	Bearing Correction
DP 42997	North Auckland	0°00'00"
SO 13535	North Auckland	0°00'00"
SO 55298	North Auckland	
SO 62315	North Auckland	0°00'00"
DP 456062	North Auckland	0°00'00"

Territorial Authorities

Far North District

Comprised In

RT NA1157/100
RT NA1196/58

Created Parcels

Parcels	Parcel Intent	Area	RT Reference
Lot 1 Deposited Plan 600165	Fee Simple Title	0.0719 Ha	1166939
Lot 2 Deposited Plan 600165	Fee Simple Title	0.0923 Ha	1166940
Total Area		0.1642 Ha	

Mark and Vector

Survey Number DP 600165

Meridional Circuit Mount Eden 2000

From	To	Code	Bearing	Adpt Surv	Bearing Correction	Distance	Adpt Surv	Class
SM 1006 SO 62316	SM 1007A DP 456062	ob0	12°02'25"	A DP 456062	0°00'00"	388.68 A	DP 456062	
SM 1007A DP 456062	SM 1008B SO 62315	ob2	15°57'20"	M		208.58 M		
SM 1008B SO 62315	SM 1009 SO 62315	ob6	164°27'40"	M		228.99 M		
SM 1007A DP 456062	IS 1 DP 600165	ob3	26°23'45"	M		50.50 M		
IS 1 DP 600165	IS 2 DP 600165	ob7	96°17'40"	M		38.00 M		
IS 2 DP 600165	IS 3 DP 600165	ob10	36°25'00"	M		37.97 M		
IS 3 DP 600165	IS 4 DP 600165	ob15	145°09'25"	M		37.23 M		
IS 4 DP 600165	SM 1009 SO 62315	ob19	166°32'10"	M		62.86 M		
SM 1007A DP 456062	AP 5 DP 600165	ob4	23°13'45"	M		71.67 M		
AP 5 DP 600165	IS 1 DP 600165	ob23	195°45'20"	M		21.43 M		
AP 5 DP 600165	IS 6 DP 600165	ob24	95°41'50"	M		35.06 M		
IS 6 DP 600165	IS 3 DP 600165	ob26	64°45'40"	M		21.68 M		
AP 5 DP 600165	AP 7 DP 600165	ob25	96°25'30"	M		20.29 M		
AP 7 DP 600165	IS 6 DP 600165	ob30	94°42'00"	M		14.77 M		
SM 1009 SO 62315	AL PLUG 5 DP 456062	ob1	344°22'25"	M		178.37 M		
AL PLUG 5 DP 456062	SM 1008B SO 62315	ob33	344°46'30"	A DP 456062	0°00'00"	50.63 A	DP 456062	
IS 4 DP 600165	AL PLUG 5 DP 456062	ob20	343°12'00"	M		115.57 M		
SM 1007A DP 456062	CP I SO 55298	ob5	27°06'45"	A DP 456062	0°00'00"	56.37 A	DP 456062	
CP I SO 55298	IT 2 DP 456062	ob34	13°14'20"	A DP 456062	0°00'00"	84.08 A	DP 456062	
IT 2 DP 456062	SM 1008B SO 62315	ob36	10°15'00"	A DP 456062	0°00'00"	69.63 A	DP 456062	
CP I SO 55298	IS IVA DP 42997	ob35	13°02'30"	A SO 62315	0°00'00"	11.43 A	SO 55298	
IS IVA DP 42997	IT V DP 42997	ob37	13°02'30"	A SO 62315	0°00'00"	42.97 A	DP 42997	
IT V DP 42997	PEG (1) DP 42997	ob39	97°11'00"	A DP 42997	0°00'00"	1.56 A	DP 42997	
PEG (1) DP 42997	PEG 1 DP 456062	ob40	13°02'30"	A SO 13535	0°00'00"	17.71 A	DP 456062	
PEG 1 DP 456062	IT 2 DP 456062	ob41	6°59'00"	A DP 456062	0°00'00"	11.88 A	DP 456062	
IS IVA DP 42997	PEG IV DP 42997	ob38	99°21'00"	A DP 42997	0°00'00"	1.56 A	DP 42997	
PEG IV DP 42997	PEG 11 DP 600165	ob42	103°02'20"	A DP 42997	0°00'00"	22.13 A	DP 42997	

Mark and Vector

Survey Number DP 600165

Meridional Circuit Mount Eden 2000

From	To	Code	Bearing	Adpt Surv	Bearing Correction	Distance	Adpt Surv	Class
PEG 11 DP 600165	DISK 12 DP 600165	ob43	193°02'20"	A DP 42997	0°00'00"	13.72 A	DP 42997	Class A
DISK 12 DP 600165	PEG III DP 42997	ob46	283°02'20"	A DP 42997	0°00'00"	22.13 A	DP 42997	
PEG III DP 42997	IT IIIA DP 42997	ob48	279°21'00"	A DP 42997	0°00'00"	1.56 A	DP 42997	
IT IIIA DP 42997	CP I SO 55298	ob49	13°02'20"	A DP 42997	0°00'00"	2.29 C		
PEG 11 DP 600165	PEG (1) SO 13535	ob44	13°02'30"	A SO 13535	0°00'00"	2.74 C		Class A
PEG (1) SO 13535	PEG 13 DP 600165	ob50	13°02'30"	A SO 13535	0°00'00"	20.12 A	SO 13535	Class A
PEG 13 DP 600165	PEG 14 DP 600165	ob51	103°02'30"	A SO 13535	0°00'00"	30.90 A	SO 13535	Class A
PEG 14 DP 600165	PEG 15 DP 600165	ob52	163°58'00"	A SO 13535	0°00'00"	20.87 C		Class A
PEG 15 DP 600165	PEG (2) SO 13535	ob53	163°58'00"	A SO 13535	0°00'00"	1.30 C		Class A
PEG (2) SO 13535	PEG 16 DP 600165	ob54	163°58'00"	A SO 13535	0°00'00"	22.18 A	SO 13535	Class A
PEG 16 DP 600165	PEG 17 DP 600165	ob55	281°26'00"	A SO 13535	0°00'00"	46.36 C		Class A
PEG 17 DP 600165	PEG (3) SO 13535	ob56	281°26'00"	M		6.10 C		
PEG (3) SO 13535	DISK 12 DP 600165	ob57	13°02'30"	A SO 13535	0°00'00"	3.66 A	DP 42997	
DISK 12 DP 600165	PEG 17 DP 600165	ob47	132°49'00"	C		7.03 C		Class A
PEG 11 DP 600165	PEG 18 DP 600165	ob45	103°02'30"	C		12.00 C		Class A
PEG 18 DP 600165	PEG 19 DP 600165	ob58	13°02'00"	C		4.10 C		Class A
PEG 19 DP 600165	PEG 15 DP 600165	ob59	102°02'00"	C		29.05 C		Class A
IS 2 DP 600165	PEG 11 DP 600165	ob11	329°28'00"	M		17.43 M		
AP 7 DP 600165	PEG 11 DP 600165	ob31	158°37'00"	M		8.07 M		
IS 1 DP 600165	DISK 12 DP 600165	ob8	95°36'00"	M		25.95 M		
IS 2 DP 600165	DISK 12 DP 600165	ob12	277°47'00"	M		12.06 M		
IS 3 DP 600165	PEG 13 DP 600165	ob16	284°21'30"	M		27.09 M		
IS 3 DP 600165	PEG 14 DP 600165	ob17	93°48'00"	M		3.87 M		
IS 4 DP 600165	PEG 14 DP 600165	ob21	330°07'30"	M		34.95 M		

Mark and Vector

Survey Number DP 600165

Meridional Circuit Mount Eden 2000

From	To	Code	Bearing	Adpt Surv	Bearing Correction	Distance	Adpt Surv	Class
IS 6 DP 600165	PEG 15 DP 600165	ob27	110°45'00" M			31.26 M		
AP 7 DP 600165	PEG 15 DP 600165	ob32	105°37'30" M			45.64 M		
IS 4 DP 600165	PEG 16 DP 600165	ob22	202°45'00" M			13.37 M		
IS 1 DP 600165	PEG 17 DP 600165	ob9	103°16'30" M			31.82 M		
IS 2 DP 600165	PEG 17 DP 600165	ob13	245°13'00" M			7.49 M		
IS 2 DP 600165	PEG 18 DP 600165	ob14	12°58'00" M			12.62 M		
IS 6 DP 600165	PEG 18 DP 600165	ob28	180°38'00" M			9.02 M		
IS 3 DP 600165	PEG 19 DP 600165	ob18	232°47'00" M			23.58 M		
IS 6 DP 600165	PEG 19 DP 600165	ob29	170°41'00" M			5.09 M		

Mark Name	Mark Condition	Description
IS 4 DP 600165		Flush at edge of seal, 1m West of large pohutukawa
SM 1007A DP 456062		Down 0.2 beside concrete edge strip
SM 1008B SO 62315		Bronze plaque in concrete footpath near NW corner of shop

*** End of Report ***

LT 600165 Schedule/Memorandum

Land registration district
North Auckland

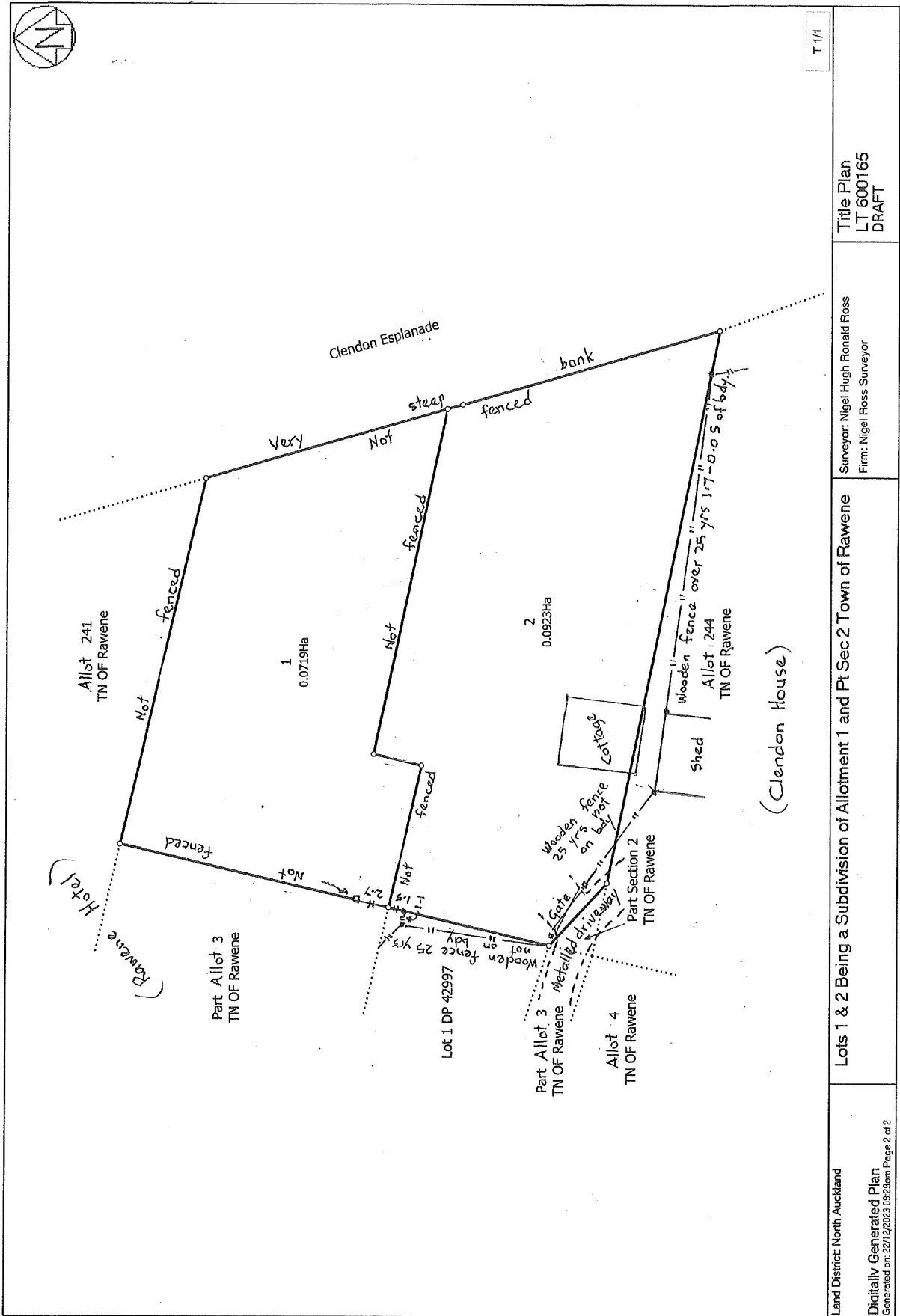
Territorial authority
Far North District

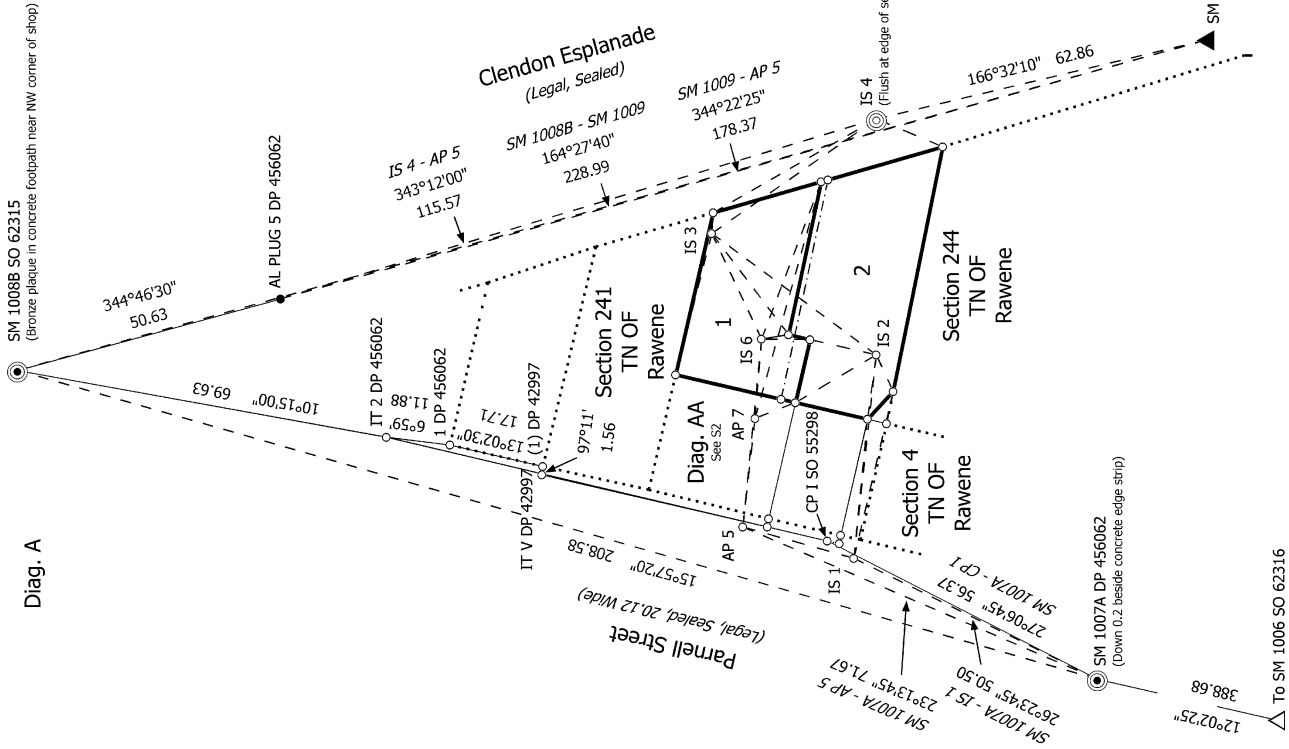
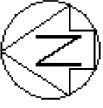
Amalgamation Conditions

Parcels shown with a prefix of *HL* include height-limited boundaries

That Lot 1 Plan 600168 (1166939) and Pt allot 3 and Allot 241 Town of Rawene be held in the same Record of Title.
See 1873523

Occupation Diagram

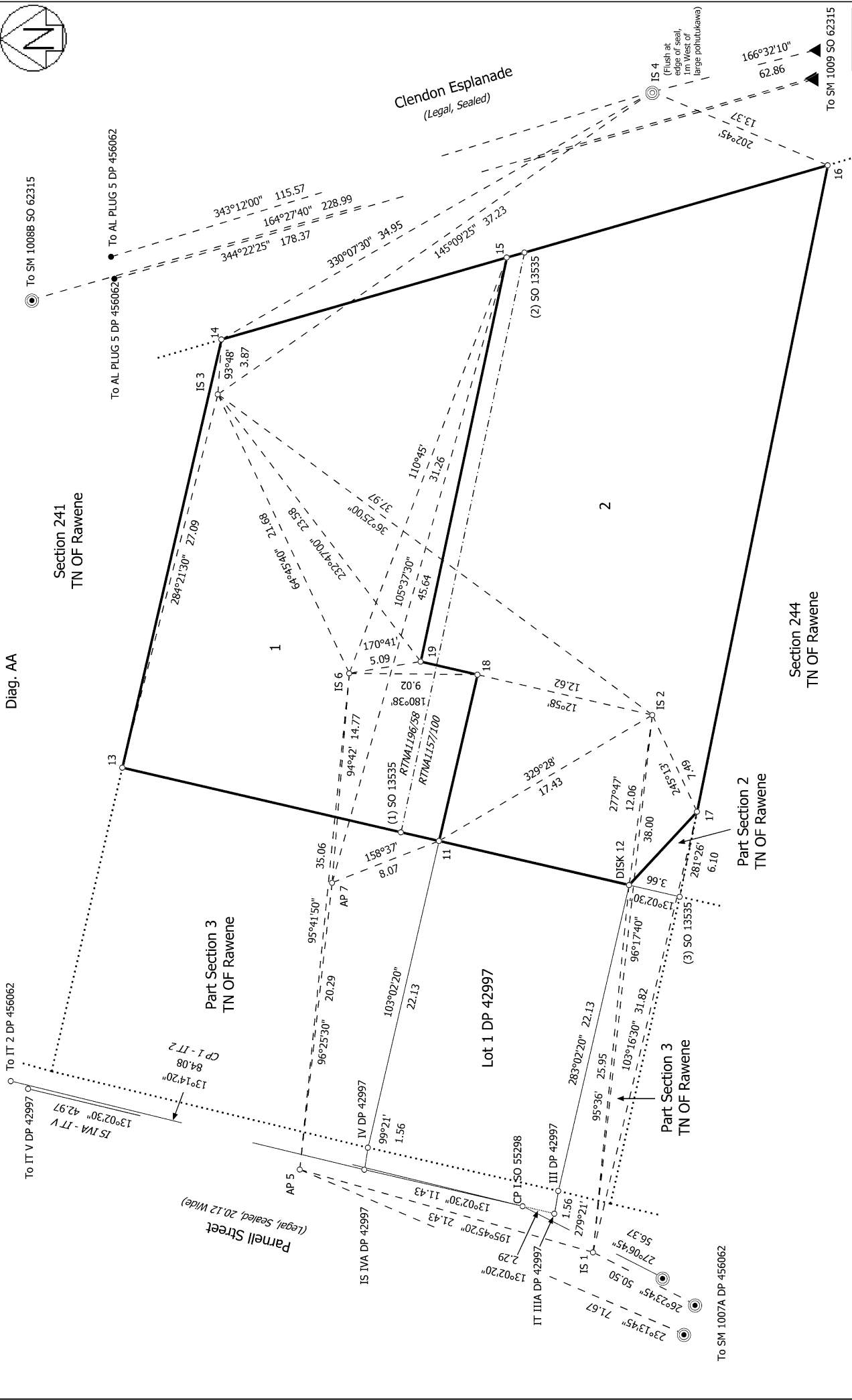




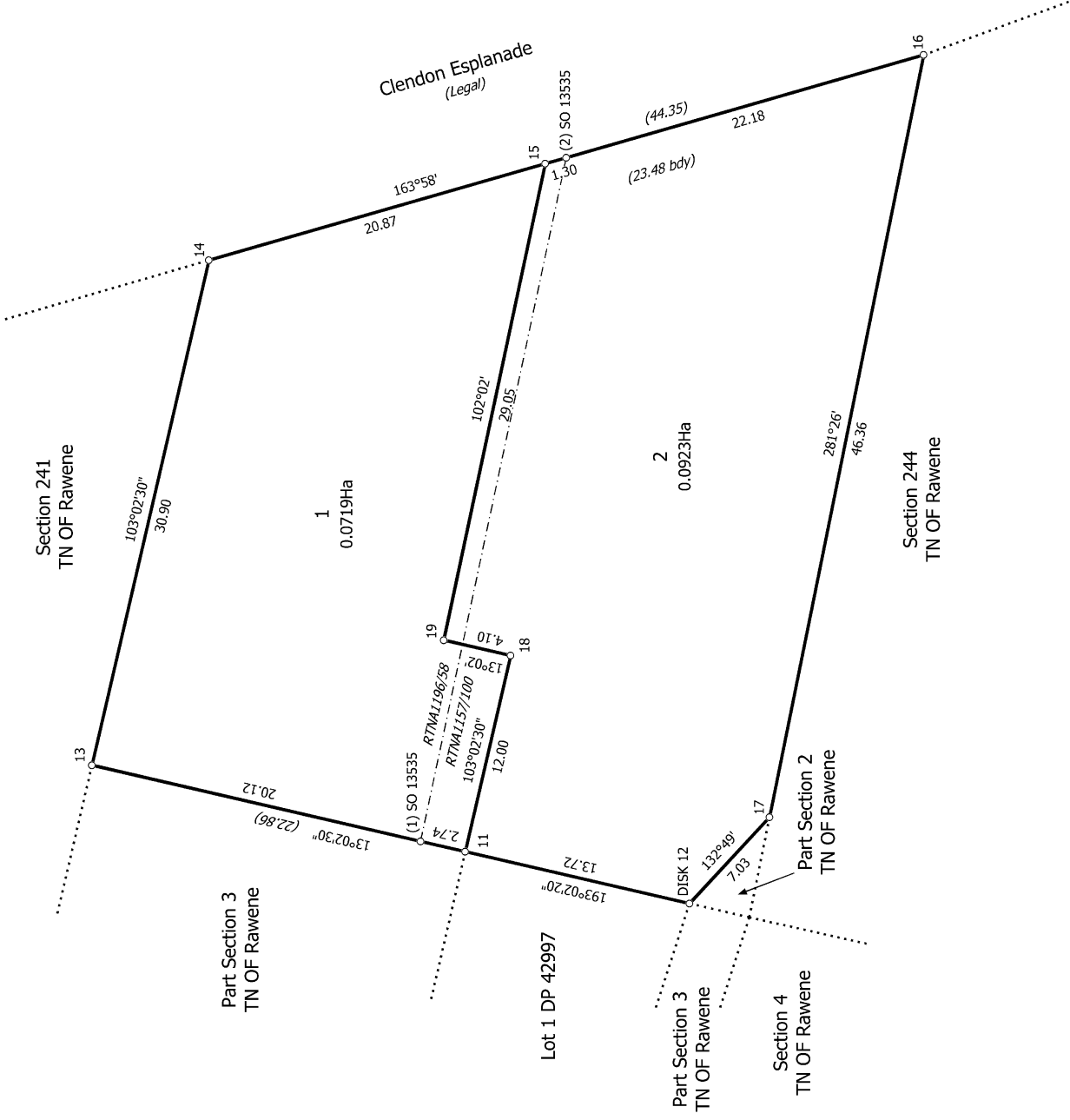
<p>Land District: North Auckland</p> <p>Digitally Generated Plan</p> <p>Generated on: 15/02/2024 10:15am Page 7 of 9</p>	<p>Lots 1 & 2 Being a Subdivision of Allotment 1 and Pt Sec 2 Town of Rawene</p> <p>Surveyor: Nigel Hugh Ronald Ross</p> <p>Firm: Nigel Ross Surveyor</p> <p>Date of Survey: 20/12/2023</p>	<p>Record of Survey</p> <p>LT 600165</p> <p>Approved on: 15/02/2024</p>
---	--	---



Diag. AA



<p>To SM 1008B SO 62315</p> <p>To AL PLUG 5 DP 456062</p> <p>To SM 1009 SO 62315</p> <p>S 2/2</p>	<p>Record of Survey LT 600165 Approved on: 15/02/2024</p>
<p>Surveyor: Nigel Hugh Ronald Ross Firm: Nigel Ross Surveyor Date of Survey: 20/12/2023</p>	<p>Section 241 TN OF Rawene</p> <p>Section 244 TN OF Rawene</p> <p>Part Section 2 TN OF Rawene</p> <p>Part Section 3 TN OF Rawene</p> <p>Lot 1 DP 42997</p> <p>Part Section 3 TN OF Rawene</p>
<p>Land District: North Auckland</p> <p>Digitally Generated Plan Generated on: 15/02/2024 10:15am Page 8 of 9</p>	<p>Lots 1 & 2 Being a Subdivision of Allotment 1 and Pt Sec 2 Town of Rawene</p>



T 1/1

Lots 1 & 2 Being a Subdivision of Allotment 1 and Pt Sec 2 Town of Rawene

Surveyor: Nigel Hugh Ronald Ross
Firm: Nigel Ross Surveyor
Date of Survey: 20/12/2023

Record of Survey
LT 600165
Approved on: 15/02/2024