



Record of Survey - LT 598484

Survey Number LT 598484
Surveyor Reference 4762 Haworth
Surveyor William Loudon Riordan
Survey Firm Truebridge Associates Ltd (Feilding)
Surveyor Declaration I William Loudon Riordan, being a licensed cadastral surveyor, certify that--
(a) this dataset provided by me and its related survey are accurate, correct and in accordance with the Cadastral Survey Act 2002 and Cadastral Survey Rules 2021; and
(b) the survey was undertaken by me or under my personal direction.
Declared on 12 Jun 2024 09:34 AM

Survey Details

Dataset Description Lots 1 - 6 Being Subdivision of Lot 29 DP 1159
Purpose LT Subdivision
Status Approved as to Survey **Type** Survey
Land District Wellington **Survey Class** Class B
Meridional Circuit Wanganui 2000 **Vertical Datum** None

Survey Dates

Surveyed Date 13/12/2023 **Certified Date** 12/06/2024
Submitted Date 12/06/2024 09:34:01 **Survey Approval Date** 14/06/2024
Deposit Date

Referenced Surveys

Survey Number	Land District	Bearing Correction
DP 420551	Wellington	0°00'00"
DP 569310	Wellington	0°00'00"
DP 1159	Wellington	-0°03'00"
DP 6057	Wellington	-0°00'30"
DP 72659	Wellington	-0°00'30"
DP 82692	Wellington	0°00'00"
SO 17846	Wellington	-0°00'20"
SO 21599	Wellington	-0°00'30"
DP 17008	Wellington	-0°00'30"
DP 57679	Wellington	0°00'00"
DP 27857	Wellington	-0°00'20"
DP 88091	Wellington	
DP 307349	Wellington	0°00'00"
DP 11569	Wellington	-0°00'20"

Territorial Authorities

Manawatu District

Comprised In

RT WN112/115



Record of Survey - LT 598484

Created Parcels

Parcels	Parcel Intent	Area	RT Reference
Lot 1 Deposited Plan 598484	Fee Simple Title	1.3500 Ha	1167971
Lot 2 Deposited Plan 598484	Fee Simple Title	1.3500 Ha	1167972
Lot 3 Deposited Plan 598484	Fee Simple Title	0.8145 Ha	1167973
Lot 4 Deposited Plan 598484	Fee Simple Title	0.8146 Ha	1167974
Lot 5 Deposited Plan 598484	Fee Simple Title	36.6644 Ha	1167975
Lot 6 Deposited Plan 598484	Fee Simple Title	12.4324 Ha	1167976
	Erosion		
	Erosion		
	Erosion		
	Hydro		
	Hydro		
	Hydro		
Total Area		53.4259 Ha	

Mark and Vector

Survey Number DP 598484

Meridional Circuit Wanganui 2000

From	To	Code	Bearing	Adpt Surv	Bearing Correction	Distance	Adpt Surv	Class
SS VII SO 17846	IT XXII DP 82692	ob40	29°10'20"	A DP 82692	0°00'00"	337.75 A	DP 82692	
IT XXII DP 82692	IT XII DP 82692	ob38	308°00'00"	A DP 82692	0°00'00"	1,018.68 A	DP 82692	
IT XII DP 82692	IT XIII DP 82692	ob36	139°59'30"	A DP 82692	0°00'00"	172.16 A	DP 82692	
IT XIII DP 82692	IT XIV DP 82692	ob35	253°20'30"	A DP 82692	0°00'00"	168.83 A	DP 82692	
IT XIV DP 82692	IT XV DP 82692	ob2	218°34'00"	A DP 82692	0°00'00"	129.47 A	DP 82692	
IT XV DP 82692	IT XVI DP 82692	ob3	182°17'00"	A DP 82692	0°00'00"	101.23 A	DP 82692	
IT XVI DP 82692	IT XVII DP 82692	ob0	250°41'00"	A DP 82692	0°00'00"	90.37 A	DP 82692	
IT XVII DP 82692	IT XXIII DP 82692	ob1	125°48'30"	A DP 82692	0°00'00"	1,008.90 A	DP 82692	
IT XXIII DP 82692	SS VII SO 17846	ob39	26°54'30"	A DP 82692	0°00'00"	90.58 A	DP 82692	
IT XII DP 82692	IT II DP 82692	ob37	357°04'00"	A DP 82692	0°00'00"	916.68 A	DP 82692	
IT II DP 82692	IT XXI DP 82692	ob43	195°47'30"	A DP 82692	0°00'00"	369.38 A	DP 82692	
IT XXI DP 82692	IT XX DP 82692	ob44	210°36'00"	A DP 82692	0°00'00"	579.11 A	DP 82692	
IT XX DP 82692	IT XIX DP 82692	ob45	209°31'00"	A DP 82692	0°00'00"	361.26 A	DP 82692	
IT XIX DP 82692	IT XVIII DP 82692	ob46	117°36'30"	A DP 82692	0°00'00"	239.06 A	DP 82692	
IT XVIII DP 82692	IT XVII DP 82692	ob48	104°38'30"	A DP 82692	0°00'00"	193.62 A	DP 82692	
IT XIX DP 82692	PEG (36) DP 17008	ob47	292°44'30"	A DP 82692	0°00'00"	286.97 A	DP 82692	
PEG (36) DP 17008	IB VA DP 17008	ob32	299°34'30"	A DP 17008	-0°00'30"	54.44 A	DP 17008	
IB VA DP 17008	IT I DP 72659	ob26	113°25'30"	A DP 72659	-0°00'30"	308.03 A	DP 72659	
IT I DP 72659	IT XIX DP 82692	ob28	117°36'30"	A DP 82692	0°00'00"	33.12 A	DP 82692	
IT I DP 72659	IT XVI DP 6057	ob29	202°15'00"	M		602.24 M		
IT XVI DP 6057	IT III DP 72659	ob50	15°45'30"	A DP 72659	-0°00'30"	126.90 A	DP 72659	
IT III DP 72659	IT II DP 72659	ob51	29°02'30"	A DP 72659	-0°00'30"	162.94 A	DP 72659	
IT II DP 72659	IT I DP 72659	ob59	21°21'30"	M		314.40 M		
IB VA DP 17008	IT VI DP 17008	ob27	115°04'25"	A DP 17008	-0°00'30"	310.24 A	DP 17008	
IT VI DP 17008	IT VII DP 17008	ob65	203°22'50"	A DP 17008	-0°00'30"	613.64 A	DP 17008	
IT VII DP 17008	IT XVI DP 6057	ob66	48°33'30"	A DP 17008	-0°00'30"	22.57 A	DP 17008	
IT I DP 72659	POST (3) DP 72659	ob30	226°12'30"	A DP 72659	-0°00'30"	18.52 A	DP 72659	

Mark and Vector

Survey Number DP 598484

Meridional Circuit Wanganui 2000

From	To	Code	Bearing	Adpt Surv	Bearing Correction	Distance	Adpt Surv	Class
POST (3) DP 72659	PEG (VI) DP 1159	ob14	115°05'00"	A DP 1159	-0°03'00"	20.12 A	DP 1159	
PEG (VI) DP 1159	PEG 1 DP 598484	ob20	203°23'10"	C		213.44 C		Class B
PEG 1 DP 598484	PEG 2 DP 598484	ob67	203°23'10"	C		90.50 C		Class B
PEG 2 DP 598484	PEG 3 DP 598484	ob69	203°23'10"	C		90.50 C		Class B
PEG 3 DP 598484	PEG 4 DP 598484	ob71	203°23'10"	C		90.50 C		Class B
PEG 4 DP 598484	PEG 5 DP 598484	ob73	203°23'10"	C		90.50 C		Class B
PEG 5 DP 598484	PEG 150 DP 598484	ob74	203°23'10"	C		8.05 C		Class B
PEG 150 DP 598484	IT XVI DP 6057	ob17	251°24'30"	M		1.35 M		
SS VII SO 17846	PEG (10) DP 1159	ob41	285°19'10"	A DP 11569	-0°00'20"	20.44 A	DP 11569	
PEG (10) DP 1159	PEG (XV) DP 1159	ob10	299°29'00"	A DP 1159	-0°03'00"	551.30 A	DP 1159	
PEG (XV) DP 1159	PEG (2) DP 1159	ob6	299°29'00"	A DP 1159	-0°03'00"	224.50 A	DP 1159	Class B
PEG (2) DP 1159	UNMK 6 DP 598484	ob13	295°09'15"	A DP 82692	0°00'00"	24.14 C		Class B
UNMK 6 DP 598484	UNMK 7 DP 598484	ob78	295°09'15"	A DP 82692	0°00'00"	21.77 C		Class B
UNMK 7 DP 598484	UNMK 8 DP 598484	ob79	295°09'15"	A DP 82692	0°00'00"	16.04 C		Class BD
UNMK 8 DP 598484	UNMK 9 DP 598484	ob80	295°09'15"	A DP 82692	0°00'00"	26.13 C		Class BD
UNMK 9 DP 598484	PEG (VI) DP 1159	ob81	295°09'15"	A DP 82692	0°00'00"	561.32 C		Class BD
SS VII SO 17846	IT I DP 27857	ob42	209°29'40"	A DP 82692	0°00'00"	165.09 A	DP 82692	
IT I DP 27857	IT VIII DP 6057	ob24	220°03'10"	A DP 420551	0°00'00"	104.35 A	DP 420551	
IT VIII DP 6057	IT VI DP 6057	ob23	209°28'00"	A DP 6057	-0°00'30"	330.50 A	DP 6057	
IT VI DP 6057	IT V DP 57679	ob25	296°50'50"	A DP 569310	0°00'00"	378.30 A	DP 569310	
IT V DP 57679	PEG (1) DP 6057	ob33	91°00'40"	A DP 57679	0°00'00"	2.23 A	DP 57679	
PEG (1) DP 6057	PEG (2) DP 6057	ob15	16°27'30"	A DP 6057	-0°00'30"	51.86 A	DP 6057	Class B
PEG (2) DP 6057	PEG (8) DP 6057	ob4	72°15'30"	A DP 6057	-0°00'30"	36.73 A	DP 6057	Class B
PEG (8) DP 6057	PEG (3) DP 6057	ob21	350°28'00"	A DP 6057	-0°00'30"	160.35 A	DP 6057	Class B
PEG (3) DP 6057	PEG (4) DP 88091	ob8	17°07'30"	A DP 6057	-0°00'30"	5.35 A	DP 88091	Class B
PEG (4) DP 88091	POST (7) DP 6057	ob7	17°07'30"	A DP 6057	-0°00'30"	144.42 A	DP 88091	Class B
POST (7) DP 6057	PEG (XV) DP 1159	ob11	17°17'00"	A DP 1159	-0°03'00"	267.43 A	DP 1159	Class B

Mark and Vector

Survey Number DP 598484

Meridional Circuit Wanganui 2000

From	To	Code	Bearing	Adpt Surv	Bearing Correction	Distance	Adpt Surv	Class
PEG 150 DP 598484	PEG (5) DP 1159	ob18	119°25'50"	A DP 6057	-0°00'30"	579.32 A	DP 6057	Class B
PEG (5) DP 1159	PEG (1) DP 1159	ob19	116°53'30"	A DP 6057	-0°00'30"	66.12 A	DP 6057	Class B
PEG (1) DP 1159	UNMK (7) SO 21599	ob5	116°46'00"	A DP 6057	-0°00'30"	182.76 A	SO 21599	Class B
UNMK (7) SO 21599	UNMK (10) SO 21599	ob22	116°46'00"	A DP 6057	-0°00'30"	3.92 A	SO 21599	Class B
UNMK (10) SO 21599	UNMK 11 DP 598484	ob9	116°46'00"	A DP 6057	-0°00'30"	18.50 C		Class BD
UNMK 11 DP 598484	UNMK (12) DP 1159	ob82	116°46'00"	A DP 6057	-0°00'30"	12.50 C		Class BD
UNMK (12) DP 1159	UNMK (8) SO 21599	ob83	116°46'00"	A DP 6057	-0°00'30"	15.57 C		Class BD
UNMK (8) SO 21599	UNMK (2) SO 21599	ob12	116°46'00"	A DP 6057	-0°00'30"	3.52 A	SO 21599	Class B
UNMK (2) SO 21599	UNMK 13 DP 598484	ob16	116°46'00"	A DP 6057	-0°00'30"	3.20 C		Class BD
UNMK 13 DP 598484	UNMK (9) DP 1159	ob85	116°46'00"	A DP 6057	-0°00'30"	7.00 C		Class BD
UNMK (9) DP 1159	PEG (7) SO 21599	ob86	116°46'00"	A DP 6057	-0°00'30"	10.42 C		Class B
PEG (7) SO 21599	PEG (1) DP 6057	ob34	116°46'00"	A DP 6057	-0°00'30"	83.36 A	SO 21599	Class B
PEG 5 DP 598484	PEG 14 DP 598484	ob75	119°26'00"	C		150.00 C		Class B
PEG 14 DP 598484	PEG 15 DP 598484	ob87	23°23'30"	C		90.50 C		Class B
PEG 15 DP 598484	PEG 4 DP 598484	ob88	299°26'20"	C		150.00 C		Class B
PEG 3 DP 598484	PEG 16 DP 598484	ob72	119°26'30"	C		90.50 C		Class B
PEG 16 DP 598484	PEG 17 DP 598484	ob90	119°26'30"	C		59.49 C		Class B
PEG 17 DP 598484	PEG 15 DP 598484	ob89	203°23'30"	C		90.50 C		Class B
PEG 2 DP 598484	PEG 18 DP 598484	ob70	119°27'00"	C		90.50 C		Class B
PEG 18 DP 598484	PEG 16 DP 598484	ob91	203°23'30"	C		90.50 C		Class B
PEG 1 DP 598484	PEG 19 DP 598484	ob68	119°27'00"	C		90.51 C		Class B
PEG 19 DP 598484	PEG 18 DP 598484	ob92	203°24'00"	C		90.51 C		Class B
IT I DP 72659	IT XVIII DP 82692	ob31	117°36'30"	M		272.17 M		
IT XVIII DP 82692	IT II DP 598484	ob49	147°51'00"	M		481.37 M		
IT II DP 598484	IT I DP 598484	ob76	211°18'45"	M		293.07 M		

Mark and Vector

Survey Number DP 598484

Meridional Circuit Wanganui 2000

From	To	Code	Bearing	Adpt Surv	Bearing Correction	Distance	Adpt Surv	Class
IT I DP 598484	IT XVI DP 6057	ob77	291°34'55"	M		616.26 M		
IT II DP 72659	IT XVI DP 6057	ob60	203°13'25"	M		287.92 M		
UNMK (12) DP 1159	UNMK 20 DP 598484	ob84	359°29'00"	C		45.51 C		
UNMK 20 DP 598484	UNMK 21 DP 598484	ob93	1°59'10"	C		268.85 C		
UNMK 21 DP 598484	UNMK 22 DP 598484	ob94	297°51'00"	C		31.60 C		
UNMK 22 DP 598484	UNMK 23 DP 598484	ob95	52°19'00"	C		26.40 C		
UNMK 23 DP 598484	UNMK 24 DP 598484	ob96	123°29'00"	C		28.54 C		
UNMK 24 DP 598484	UNMK 25 DP 598484	ob97	14°51'40"	C		164.94 C		
UNMK 25 DP 598484	UNMK 30 DP 598484	ob98	32°00'00"	C		34.83 C		
UNMK 30 DP 598484	UNMK 27 DP 598484	ob99	257°43'00"	C		34.70 C		
UNMK 27 DP 598484	UNMK 28 DP 598484	ob100	330°45'40"	C		177.16 C		
UNMK 28 DP 598484	UNMK 8 DP 598484	ob101	49°50'30"	C		51.44 C		
IT II DP 72659	PEG 3 DP 598484	ob52	202°20'00"	M		97.97 M		
IT XVI DP 6057	PEG 15 DP 598484	ob53	84°16'00"	M		171.89 M		
IT II DP 72659	PEG 16 DP 598484	ob54	162°53'20"	M		141.36 M		
IT II DP 72659	PEG 17 DP 598484	ob55	150°23'20"	M		189.04 M		
IT XVI DP 6057	PEG 4 DP 598484	ob56	23°57'30"	M		99.47 M		
IT XVI DP 6057	PEG 5 DP 598484	ob57	29°46'00"	M		9.01 M		
IT XVI DP 6057	PEG 14 DP 598484	ob58	116°00'00"	M		150.32 M		
IT II DP 72659	PEG 1 DP 598484	ob61	24°37'30"	M		83.09 M		
IT II DP 72659	PEG 18 DP 598484	ob62	123°52'30"	M		93.36 M		
IT II DP 72659	PEG 19 DP 598484	ob63	74°42'20"	M		117.61 M		
IT II DP 72659	PEG 2 DP 598484	ob64	189°48'00"	M		7.66 M		

Mark Name	Mark Condition	Description
IT I DP 598484		IT Buried 0.3



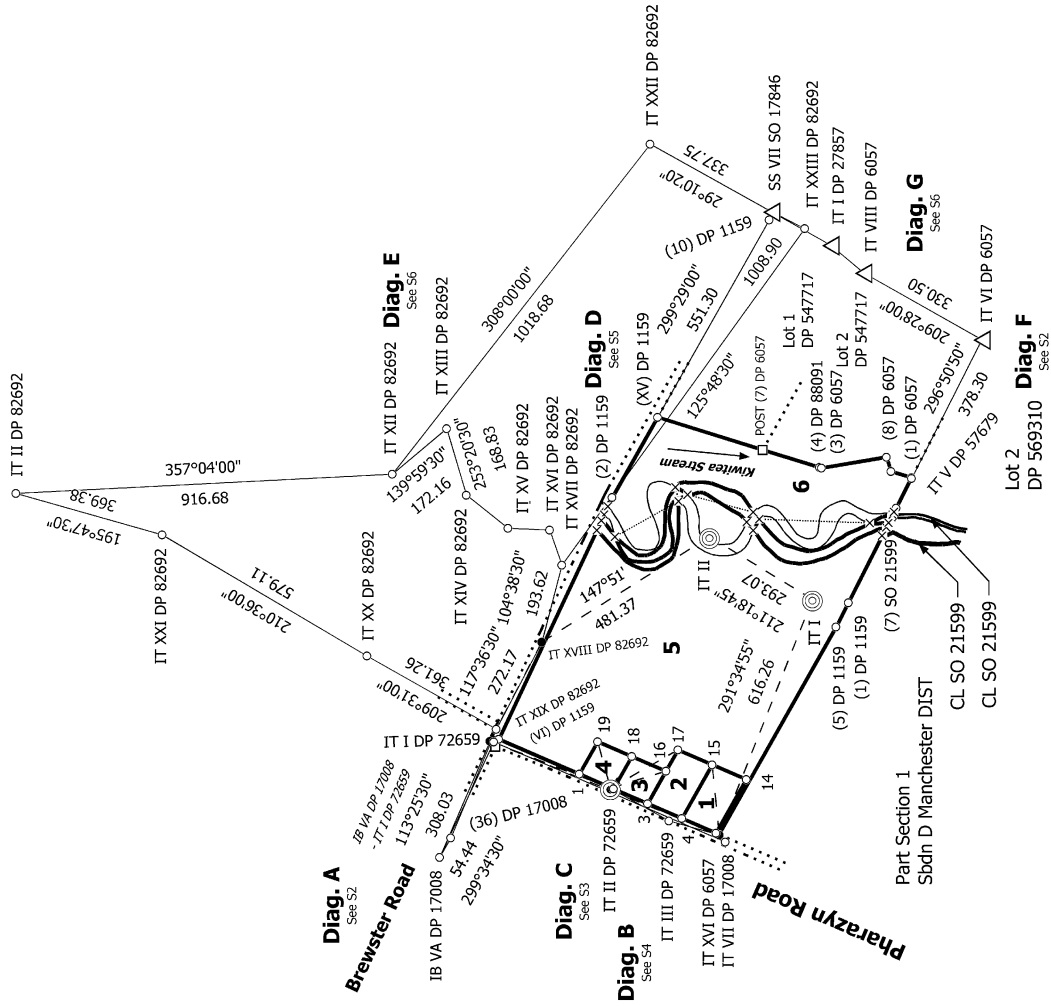
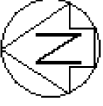
Mark and Vector

Survey Number DP 598484

Meridional Circuit Wanganui 2000

Mark Name	Mark Condition	Description
IT II DP 598484		IT Buried 0.3 in farm access
IT II DP 72659		IT Buried 0.3 in road berm

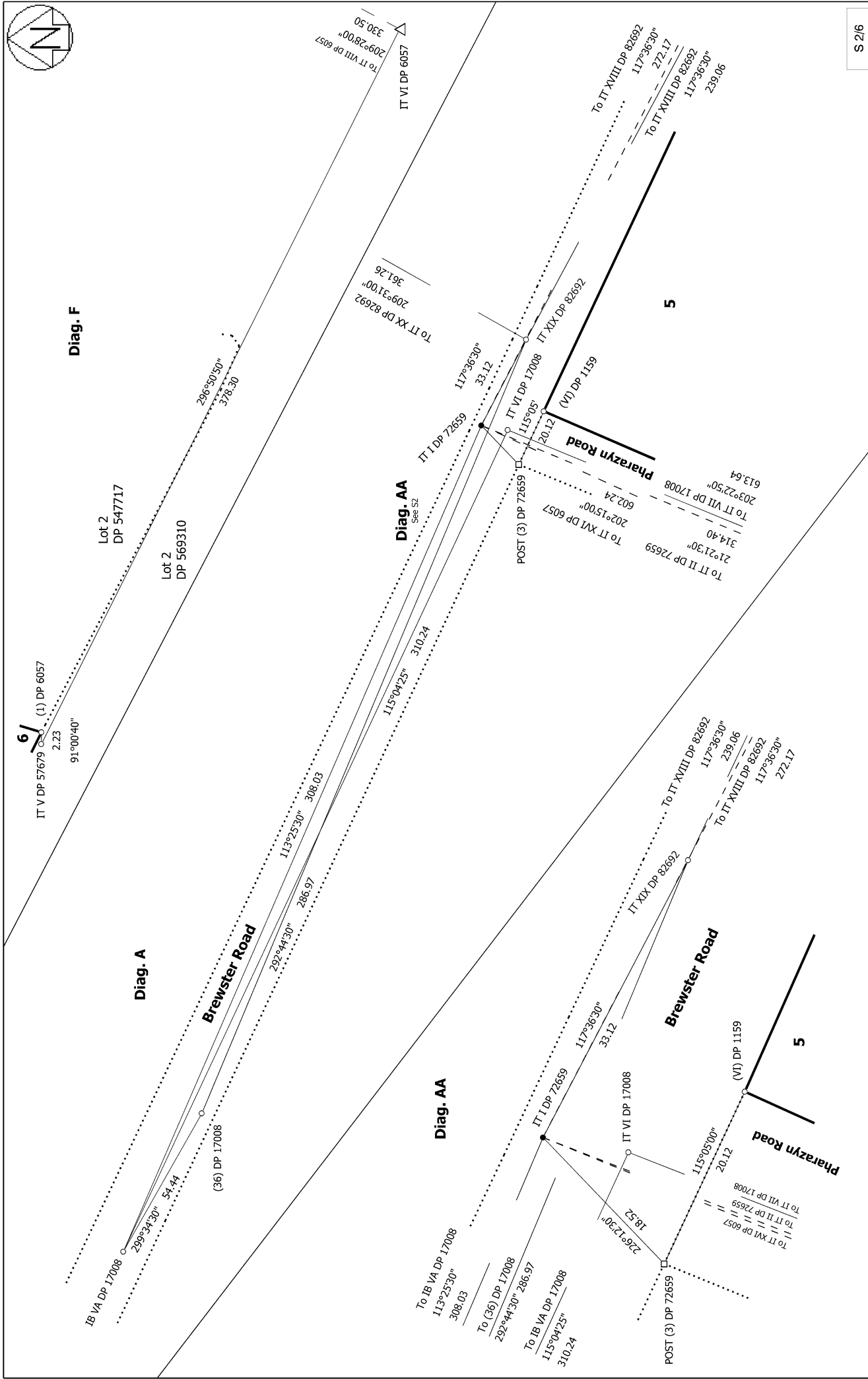
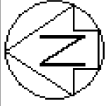
*** End of Report ***



Lots 1 - 6 Being Subdivision of Lot 29 DP 1159

Surveyor: William Loudon Flordan
Firm: Truebridge Associates Ltd (Feilding)
Date of Survey: 13/12/2023

Record of Survey
LT 598484
Approved on: 14/06/2024



S 2/6

<p>Land District: Wellington</p> <p>Digitally Generated Plan</p> <p>Generated on: 14/06/2024 11:00am Page 10 of 16</p>	<p>Lots 1 - 6 Being Subdivision of Lot 29 DP 1159</p>	<p>Surveyor: William Loudon Flordan Firm: Truebridge Associates Ltd (Feilding) Date of Survey: 13/12/2023</p> <p>Record of Survey LT 598484 Approved on: 14/06/2024</p>
---	--	---



Diag. CA

4

3

IT II DP 72659
(IT Buried 0.3
in road berm)

Pharazyn Road

S 3/6

Record of Survey
LT 598484
Approved on: 14/06/2024

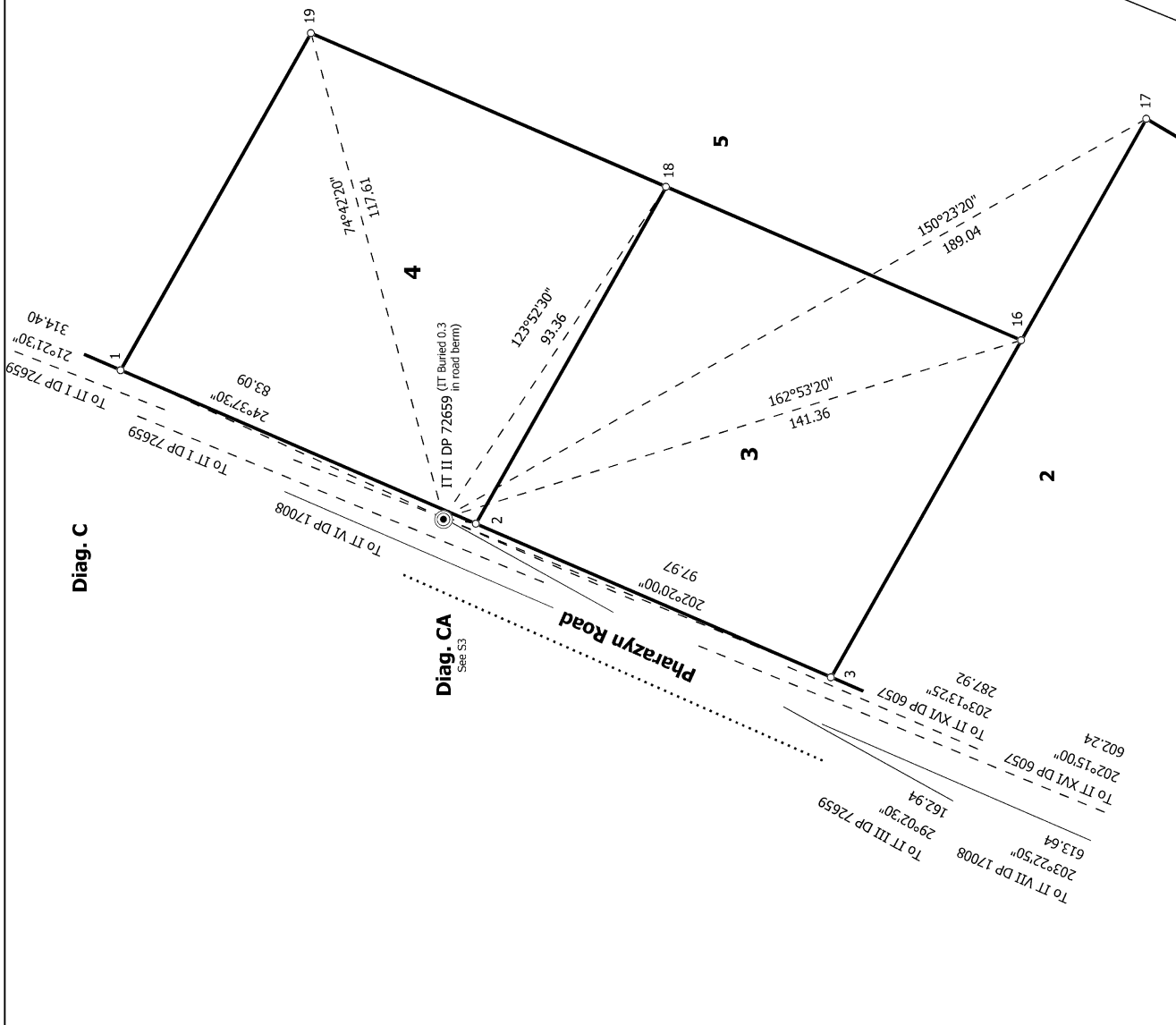
Surveyor: William Loudon Flordan
Firm: Truebridge Associates Ltd (Feilding)
Date of Survey: 13/12/2023

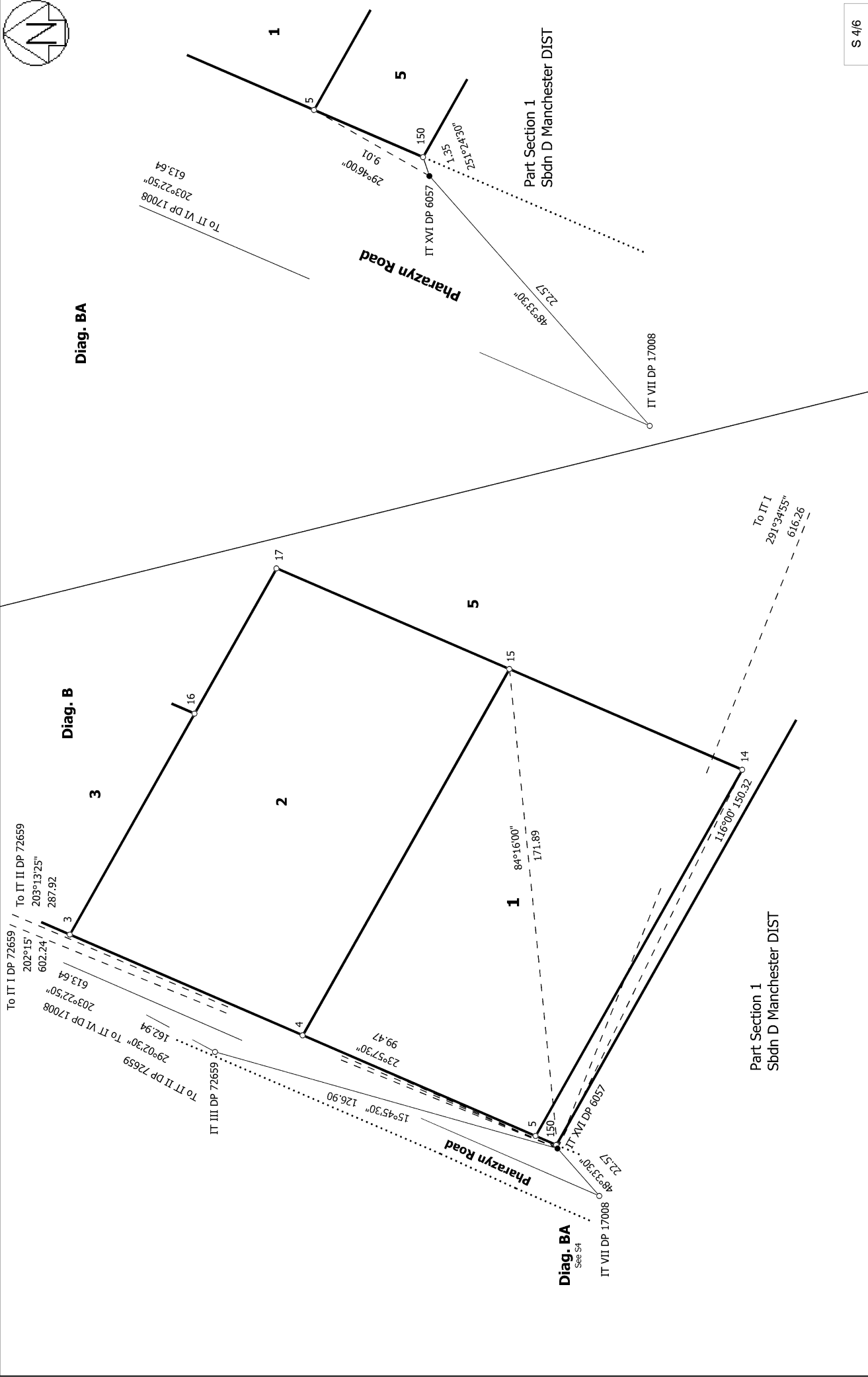
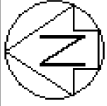
Lots 1 - 6 Being Subdivision of Lot 29 DP 1159

Land District: Wellington

Digitally Generated Plan

Generated on: 14/06/2024 11:00am Page 11 of 16





S 4/6

Record of Survey
 LT 598484
 Approved on: 14/06/2024

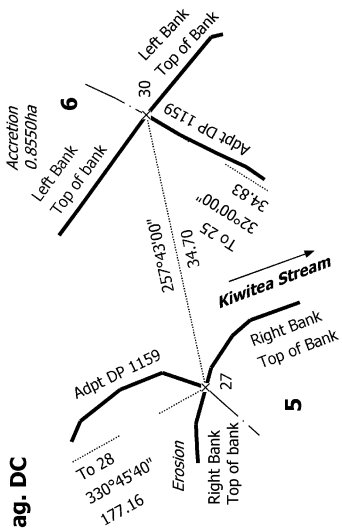
Surveyor: William Loudon Flordan
 Firm: Truebridge Associates Ltd (Feilding)
 Date of Survey: 13/12/2023

Lots 1 - 6 Being Subdivision of Lot 29 DP 1159

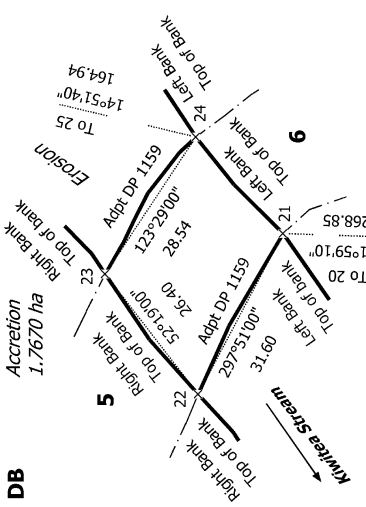
Land District: Wellington
 Digitally Generated Plan
 Generated on: 14/06/2024 11:00am | Page 12 of 16



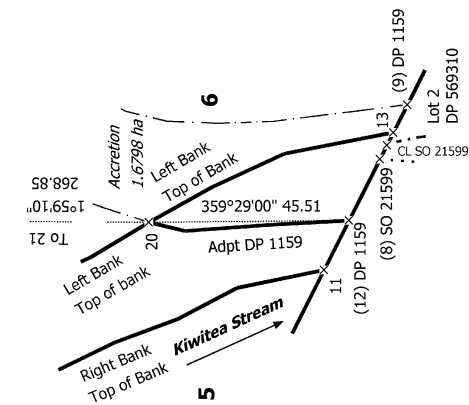
Diag. DC



Diag. DB



Diag. DA

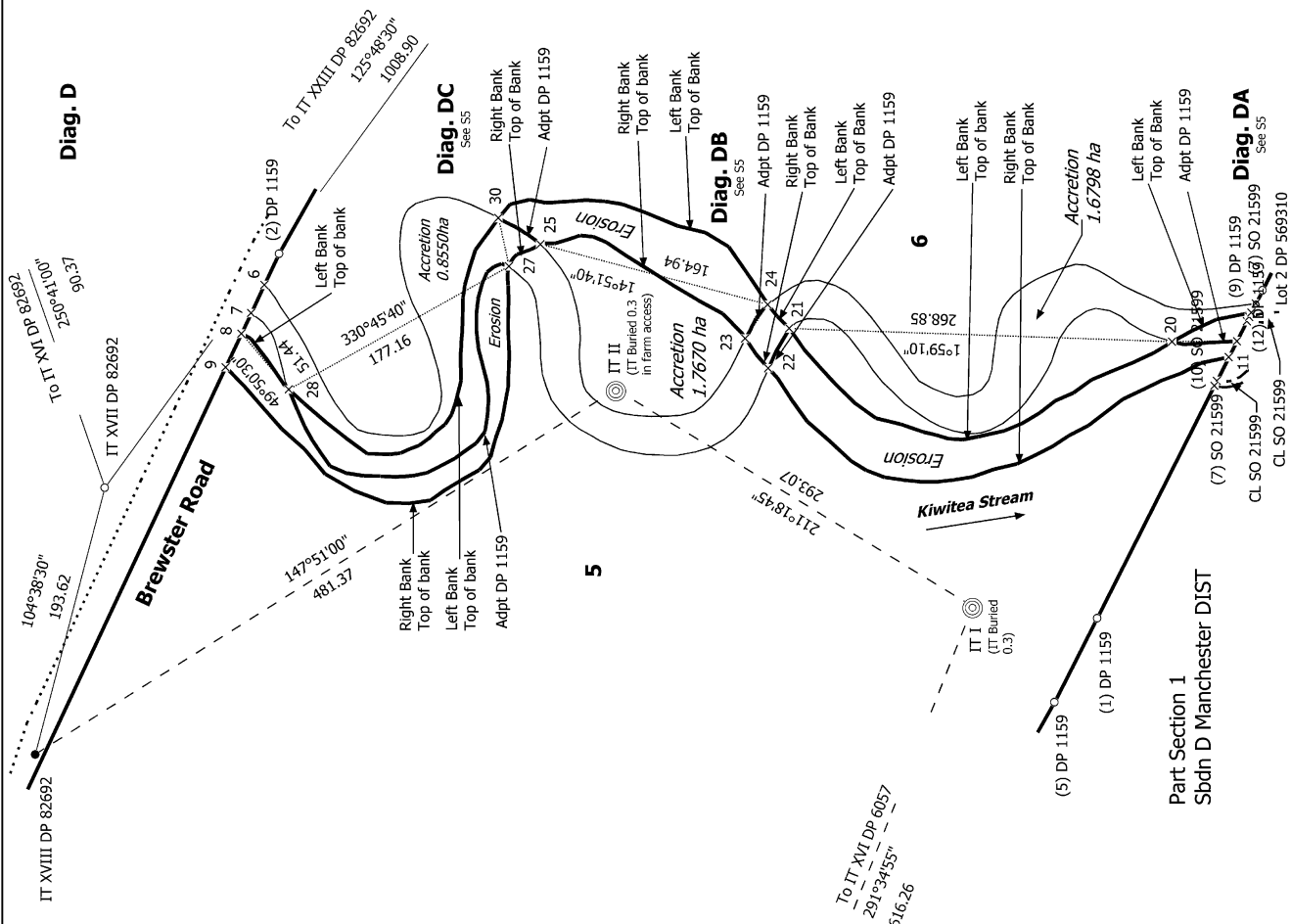


S 5/6

Record of Survey
LT 598484
Approved on: 14/06/2024

Surveyor: William Loudon Flordan
Firm: Truebridge Associates Ltd (Feilding)
Date of Survey: 13/12/2023

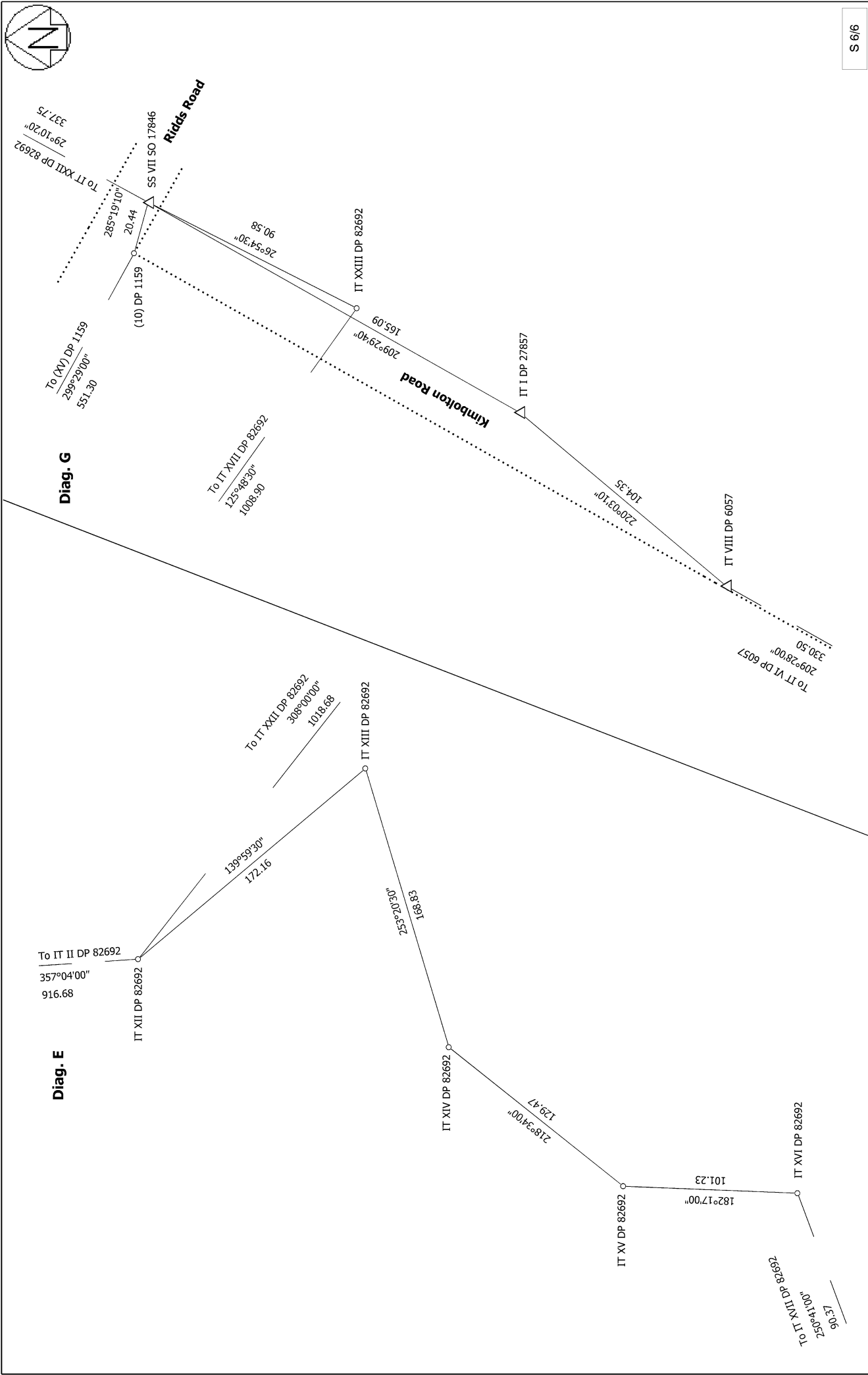
Diag. D

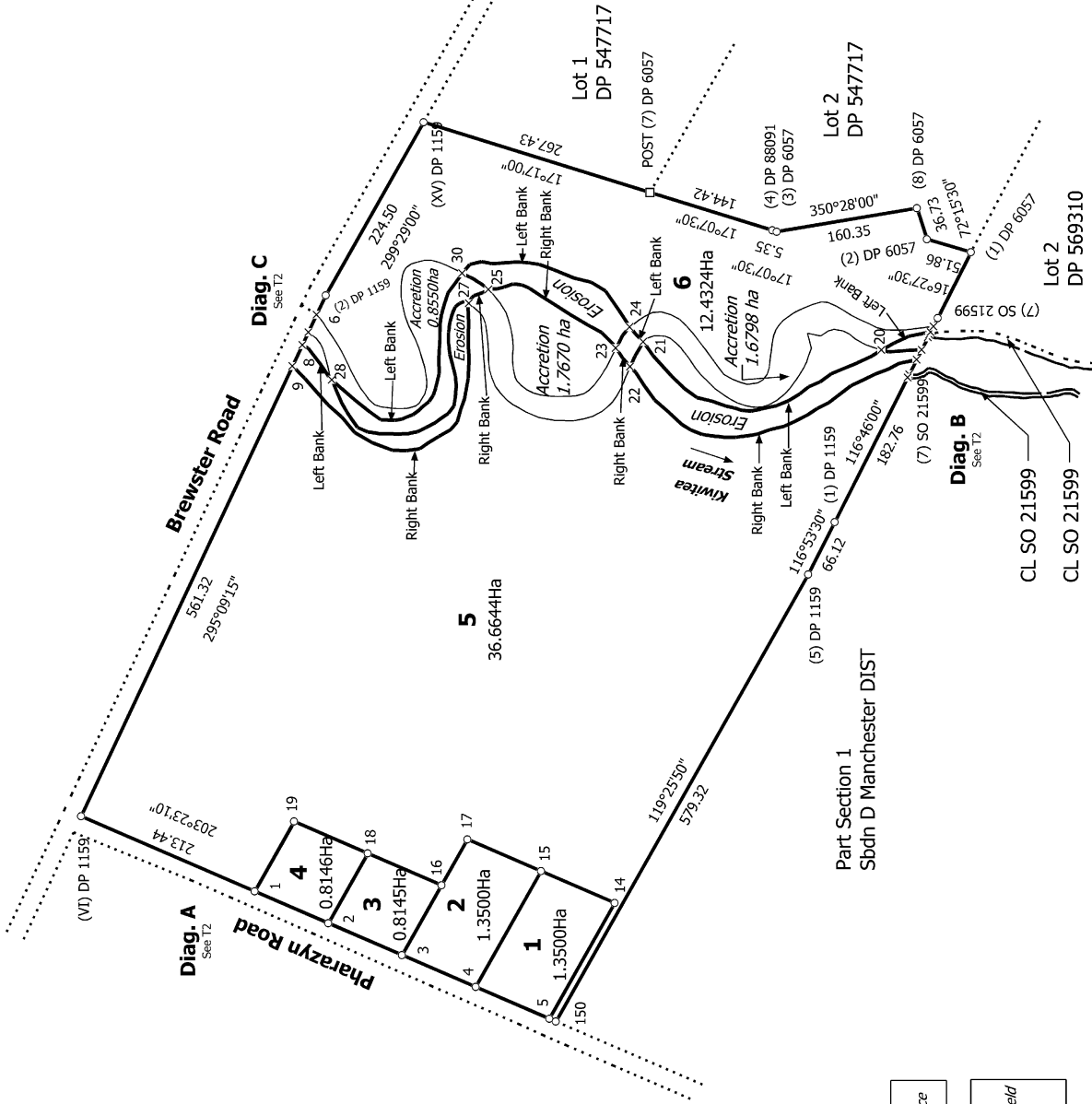
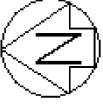


Lots 1 - 6 Being Subdivision of Lot 29 DP 1159

Land District: Wellington

Digitally Generated Plan
Generated on: 14/06/2024 11:00am Page 13 of 16





Lots 1 - 4 are to be subject to a consent notice

Amalgamation Condition
 That Lot 5 and 6 hereon be amalgamated and held on the same Record of Title.
 LINZ Reference: 1885747

T 1/2

Land District: Wellington

Lots 1 - 6 Being Subdivision of Lot 29 DP 1159

Surveyor: William Loudon Flordan
 Firm: Truebridge Associates Ltd (Feilding)
 Date of Survey: 13/12/2023

Record of Survey
 LT 598484
 Approved on: 14/06/2024

Digitally Generated Plan

Generated on: 14/06/2024 11:00am Page 15 of 16

