



# Record of Survey - LT 597877

---

**Survey Number** LT 597877  
**Surveyor Reference** 2419 - 5 Bluewater Place  
**Surveyor** Campbell Lloyd Harvey  
**Survey Firm** Civilplan Consultants Limited  
**Surveyor Declaration** I Campbell Lloyd Harvey, being a licensed cadastral surveyor, certify that--  
(a) this dataset provided by me and its related survey are accurate, correct and in accordance with the Cadastral Survey Act 2002 and Cadastral Survey Rules 2021; and  
(b) the survey was undertaken by me or under my personal direction.  
Declared on 25 Jan 2024 04:17 PM

---

## Survey Details

**Dataset Description** Lot 1 Being Lot 3 DP 80629 and Accretion thereto  
**Purpose** LT Subdivision  
**Status** Approved as to Survey  
**Land District** North Auckland  
**Meridional Circuit** Mount Eden 2000

Type	Survey
<b>Survey Class</b>	Class A
<b>Vertical Datum</b>	None

---

## Survey Dates

<b>Surveyed Date</b>	24/10/2023	<b>Certified Date</b>	25/01/2024
<b>Submitted Date</b>	25/01/2024 16:17:37	<b>Survey Approval Date</b>	26/01/2024
<b>Deposit Date</b>			

---

## Referenced Surveys

Survey Number	Land District	Bearing Correction
DP 80629	North Auckland	0°00'00"
DP 76864	North Auckland	0°00'00"
DP 80676	North Auckland	0°00'00"

---

## Territorial Authorities

Auckland Council

---

## Comprised In

RT NA9B/1172  
RT NA37B/372

---

## Created Parcels

Parcels	Parcel Intent	Area	RT Reference
Part Tidal Lands of Manukau Harbour Survey Office Plan 67474	Fee Simple Title	9.4324 Ha	
Lot 1 Deposited Plan 597877	Fee Simple Title	0.0890 Ha	1160164
<b>Total Area</b>		<u>9.5214 Ha</u>	

---

# Mark and Vector

Survey Number DP 597877

Meridional Circuit Mount Eden 2000

From	To	Code	Bearing	Adpt Surv	Bearing Correction	Distance	Adpt Surv	Class
SS 132 SO 48647	TERRIER PIN G DP 80629	ob0	264°17'50"	M		57.75 M		
TERRIER PIN G DP 80629	TERRIER PIN F DP 80629	ob2	244°58'40"	M		34.24 M		
TERRIER PIN F DP 80629	RM E DP 80629	ob4	231°18'50"	M		50.00 M		
RM E DP 80629	RM D DP 80629	ob5	231°18'50"	M		60.46 M		
RM D DP 80629	RM C DP 80676	ob6	231°18'50"	A DP 80676	0°00'00"	49.96 A DP 80676		
RM C DP 80676	RM B DP 80676	ob7	231°18'50"	A DP 80676	0°00'00"	41.01 A DP 80676		
RM B DP 80676	RM A DP 80676	ob8	229°52'10"	A DP 80676	0°00'00"	46.15 A DP 80676		
RM A DP 80676	IT X DP 76864	ob9	115°50'40"	A DP 80676	0°00'00"	35.87 A DP 80676		
IT X DP 76864	IT IX DP 76864	ob10	270°42'50"	A DP 80676	0°00'00"	86.79 A DP 80676		
IT IX DP 76864	IT XXVI DP 80676	ob11	42°32'50"	A DP 80676	0°00'00"	98.91 A DP 80676		
IT XXVI DP 80676	IT XXVII DP 80676	ob12	48°04'10"	A DP 80676	0°00'00"	40.58 A DP 80676		
IT XXVII DP 80676	IT XXVIII DP 80629	ob13	48°04'10"	A DP 80676	0°00'00"	40.28 A DP 80676		
IT XXVIII DP 80629	IT XXIX DP 80629	ob14	48°04'10"	A DP 80629	0°00'00"	32.22 A DP 80629		
IT XXIX DP 80629	IT XXX DP 80629	ob15	45°34'10"	A DP 80629	0°00'00"	57.95 A DP 80629		
IT XXX DP 80629	IT XXXI DP 80629	ob16	45°34'10"	A DP 80629	0°00'00"	16.26 A DP 80629		
IT XXXI DP 80629	IT III DP 80629	ob17	107°12'20"	A DP 80629	0°00'00"	45.81 A DP 80629		
IT III DP 80629	IT VI DP 80629	ob18	324°21'40"	A DP 80629	0°00'00"	45.46 A DP 80629		
IT VI DP 80629	IT V DP 80629	ob20	79°59'00"	A DP 80629	0°00'00"	38.09 A DP 80629		
IT V DP 80629	IT IV DP 80629	ob23	79°59'00"	A DP 80629	0°00'00"	43.12 A DP 80629		
IT IV DP 80629	SS 132 SO 48647	ob24	144°12'40"	A DP 80629	0°00'00"	58.56 A DP 80629		
IT III DP 80629	IT II DP 80629	ob19	65°28'40"	A DP 80629	0°00'00"	22.64 A DP 80629		
IT II DP 80629	IT I DP 80629	ob26	85°19'20"	M		41.55 M		
IT I DP 80629	SS 132 SO 48647	ob28	109°43'10"	M		27.32 M		
IT VI DP 80629	PEG 24 DP 80629	ob21	92°16'00"	A DP 80629	0°00'00"	29.84 A DP 80629		
PEG 24 DP 80629	PEG 25 DP 80629	ob29	162°03'50"	A DP 80629	0°00'00"	32.29 A DP 80629		Class A
PEG 25 DP 80629	TERRIER PIN G DP 80629	ob31	112°59'00"	A DP 80629	0°00'00"	18.49 A DP 80629		
IT IV DP 80629	PEG 26 DP 80629	ob25	250°38'00"	A DP 80629	0°00'00"	32.35 A DP 80629		
PEG 26 DP 80629	PEG 27 DP 80629	ob32	169°46'10"	A DP 80629	0°00'00"	30.57 A DP 80629		Class A
PEG 27 DP 80629	TERRIER PIN G DP 80629	ob34	171°19'00"	A DP 80629	0°00'00"	12.58 A DP 80629		

# Mark and Vector

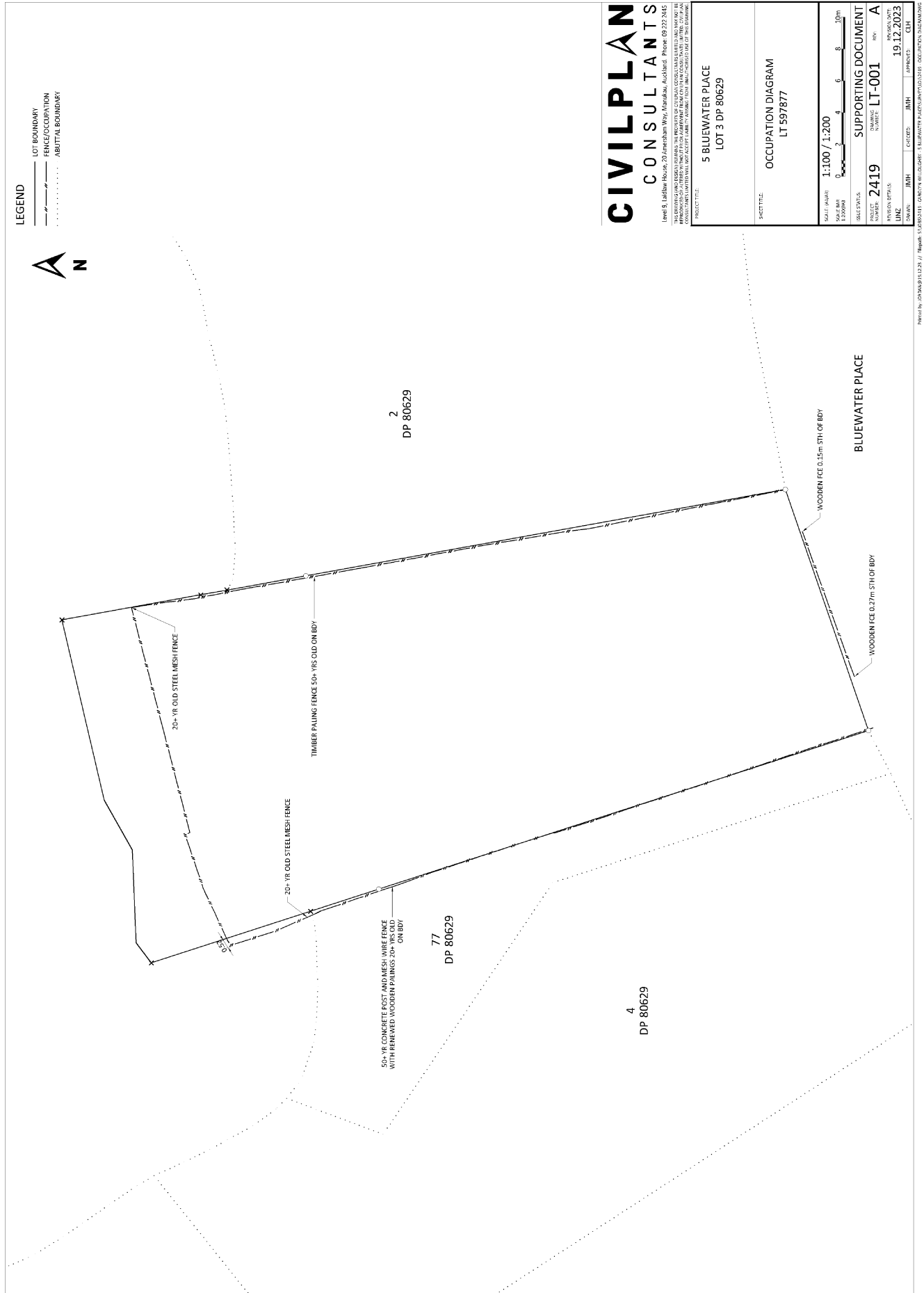
Survey Number DP 597877

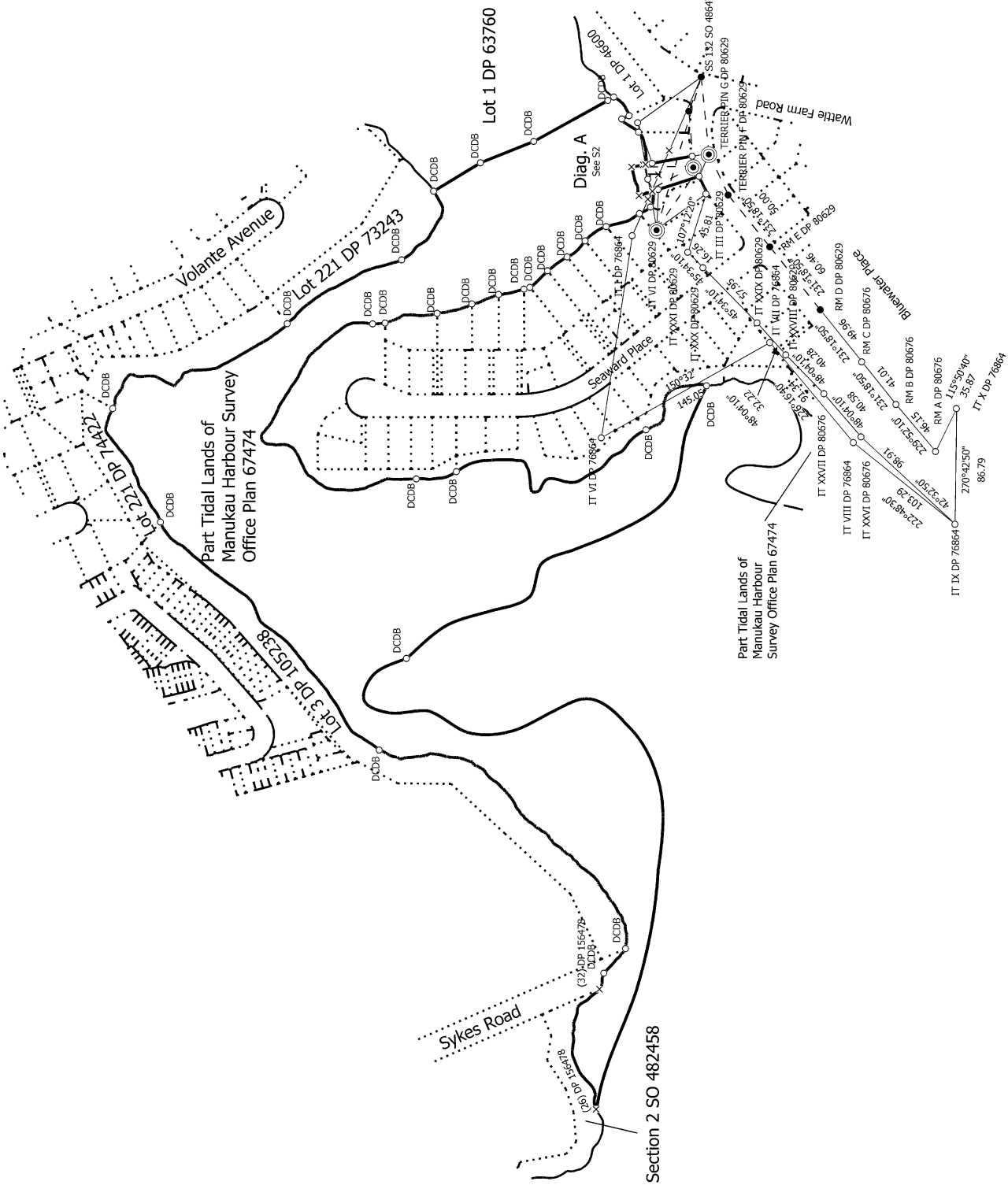
Meridional Circuit Mount Eden 2000

From	To	Code	Bearing	Adpt Surv	Bearing Correction	Distance	Adpt Surv	Class
PEG 27 DP 80629	PEG 25 DP 80629	ob35	250°56'45"	A DP 80629	0°00'00"	16.00 A	DP 80629	Class A
PEG 24 DP 80629	UNMK 28 DP 80629	ob30	342°03'50"	A DP 80629	0°00'00"	4.50 A	DP 80629	Class AD
UNMK 28 DP 80629	IT V DP 80629	ob36	68°49'00"	C		9.75 C		
PEG 26 DP 80629	UNMK 36 DP 80629	ob33	349°46'10"	A DP 80629	0°00'00"	5.00 A	DP 80629	Class AD
UNMK 29 DP 80629	IT V DP 80629	ob38	252°32'00"	C		11.26 C		
SS 132 SO 48647	UNMK 33 DP 76864	ob1	293°30'20"	A DP 76864	0°00'00"	60.00 A	DP 76864	
UNMK 33 DP 76864	UNMK 34 DP 76864	ob44	293°30'20"	A DP 76864	0°00'00"	20.00 A	DP 76864	
UNMK 34 DP 76864	UNMK 35 DP 76864	ob45	293°30'20"	A DP 76864	0°00'00"	20.00 A	DP 76864	
UNMK 35 DP 76864	IT I DP 76864	ob46	293°30'20"	A DP 76864	0°00'00"	29.79 A	DP 76864	
IT I DP 76864	IT VI DP 76864	ob40	278°37'50"	A DP 76864	0°00'00"	153.32 A	DP 76864	
IT VI DP 76864	IT VII DP 76864	ob41	150°32'00"	A DP 76864	0°00'00"	145.05 A	DP 76864	
IT VII DP 76864	IT VIII DP 76864	ob42	226°16'40"	A DP 76864	0°00'00"	91.34 A	DP 76864	
IT VIII DP 76864	IT IX DP 76864	ob43	222°48'30"	A DP 76864	0°00'00"	103.29 A	DP 76864	
TERRIER PIN G DP 80629	IT VI DP 80629	ob3	304°34'00"	M		68.92 M		
IT VI DP 80629	SS 132 SO 48647	ob22	106°17'20"	M		118.99 M		
IT II DP 80629	UNMK 39 DP 597877	ob27	331°41'00"	M		46.18 M		
UNMK 39 DP 597877	UNMK 44 DP 597877	ob47	75°24'00"	C		22.22 C		
UNMK 44 DP 597877	IT II DP 80629	ob48	179°30'00"	M		46.26 M		
UNMK 28 DP 80629	UNMK 39 DP 597877	ob37	342°03'50"	A DP 80676	0°00'00"	10.51 C		Class AD
UNMK 29 DP 80629	UNMK 44 DP 597877	ob39	349°46'10"	A DP 80629	0°00'00"	8.84 C		Class AD
UNMK 36 DP 80629	UNMK 29 DP 80629	ob49	349°46'10"	A DP 80629	0°00'00"	1.71 C		Class AD

\*\*\* End of Report \*\*\*

# Occupation Diagram

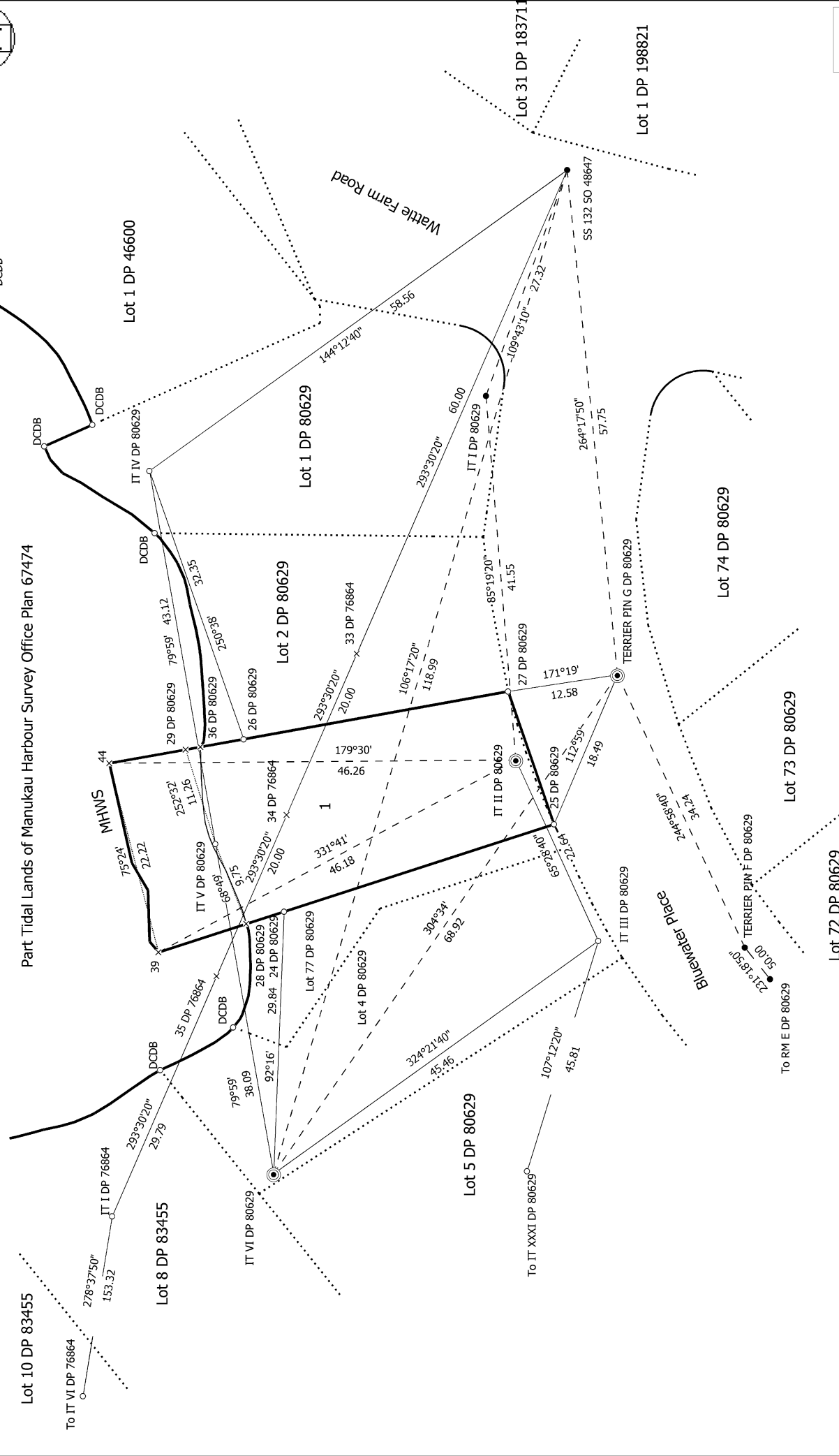




Land District: North Auckland <b>Digitally Generated Plan</b> Generated on: 26/01/2024 10:23:36am Page 5 of 8	<b>Lot 1 Being Lot 3 DP 80629 and Accretion thereto</b>	Surveyor: Campbell Lloyd Harvey Firm: Civilplan Consultants Limited Date of Survey: 24/10/2023	Record of Survey LT 597877 Approved on: 26/01/2024
---	---	--	--

Diag. A

Part Tidal Lands of Manukau Harbour Survey Office Plan 67474



S 2/2

Land District: North Auckland

Lot 1 Being Lot 3 DP 80629 and Accretion thereto

Surveyor: Campbell Lloyd Harvey

Firm: Civilplan Consultants Limited

Date of Survey: 24/10/2023

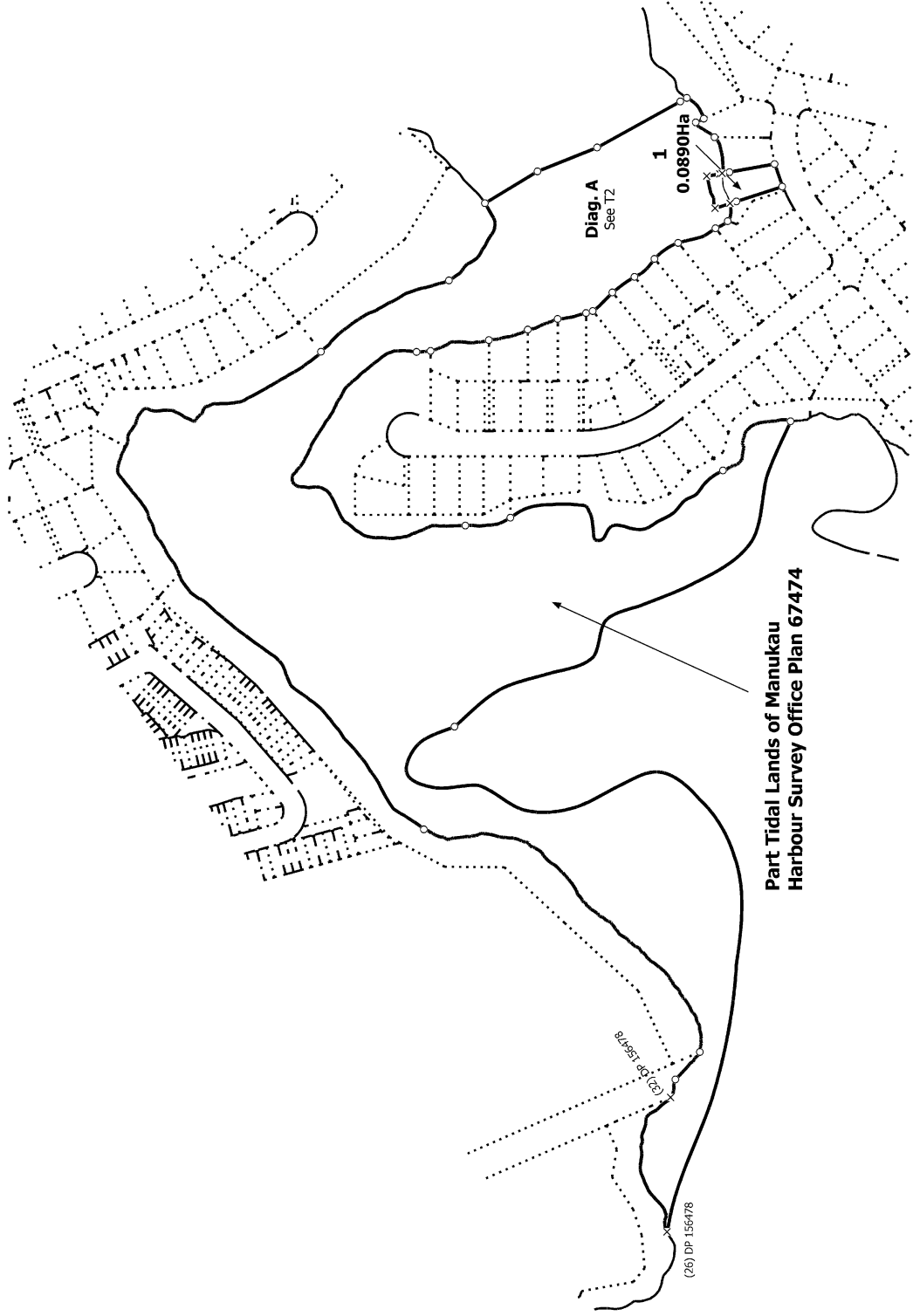
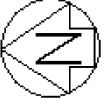
Record of Survey

LT 597877

Approved on: 26/01/2024

Digitally Generated Plan

Generated on: 26/01/2024 10:23:30am | Page 6 of 8



T 1/2

Land District: North Auckland

Digitally Generated Plan

Generated on: 26/01/2024 10:23:30am Page 7 of 8

Lot 1 Being Lot 3 DP 80629 and Accretion thereto

Surveyor: Campbell Lloyd Harvey  
Firm: Civilplan Consultants Limited  
Date of Survey: 24/10/2023

Record of Survey  
LT 597877  
Approved on: 26/01/2024



**Diag. A**

Part Tidal Lands of Manukau Harbour Survey Office Plan 67474

