

Record of Survey - LT 595824

Survey Number LT 595824
Surveyor Reference 220538-Ribbonwood Kirton
Surveyor Dean Sherrit
Survey Firm Cheal Consultants Limited
Surveyor Declaration I Dean Sherrit, being a licensed cadastral surveyor, certify that--
 (a) this dataset provided by me and its related survey are accurate, correct and in accordance with the Cadastral Survey Act 2002 and Cadastral Survey Rules 2021; and
 (b) the survey was undertaken by me or under my personal direction.
 Declared on 04 Apr 2024 02:14 PM

Survey Details

Dataset Description Lots 1 to 4 being a Subdivision of Part Lot 5 DPS 6004, Lot 1 DP 23480 & Part Lot 10 DP 17392
Purpose LT Subdivision
Status Approved as to Survey **Type** Survey
Land District South Auckland **Survey Class** Class B
Meridional Circuit Mount Eden 2000 **Vertical Datum** None

Survey Dates

Surveyed Date 02/10/2023 **Certified Date** 04/04/2024
Submitted Date 04/04/2024 14:14:18 **Survey Approval Date** 16/04/2024
Deposit Date

Referenced Surveys

Survey Number	Land District	Bearing Correction
ML 7383	South Auckland	0°00'00"
DPS 1528	South Auckland	0°00'00"
DPS 6004	South Auckland	0°00'00"
DPS 62781	South Auckland	0°00'00"
SO 43218	South Auckland	0°00'00"
DP 10800	South Auckland	0°00'00"
DP 17392	South Auckland	0°00'00"
DP 23480	South Auckland	0°00'00"
ML 7816	South Auckland	0°00'00"
SO 13840	South Auckland	0°00'00"
SO 40784	South Auckland	0°00'00"
DPS 8156	South Auckland	0°00'00"
SO 37732	South Auckland	0°00'00"
DPS 61894	South Auckland	0°00'00"

Territorial Authorities

Ruapehu District

Comprised In

RT SA1751/6



Record of Survey - LT 595824

Comprised In

RT SA2D/194
RT SA3A/184

Created Parcels

Parcels	Parcel Intent	Area	RT Reference
Lot 1 Deposited Plan 595824	Fee Simple Title	6.7632 Ha	1150825
Lot 2 Deposited Plan 595824	Fee Simple Title	1.9140 Ha	1150826
Lot 3 Deposited Plan 595824	Fee Simple Title	0.6785 Ha	1150825
Lot 4 Deposited Plan 595824	Fee Simple Title	0.6951 Ha	1150827
Total Area		<u>10.0508 Ha</u>	

Mark and Vector

Survey Number DP 595824

Meridional Circuit Mount Eden 2000

From	To	Code	Bearing	Adpt Surv	Bearing Correction	Distance	Adpt Surv	Class
IT DP 10371	IT 1 DP 595824	ob0	78°27'30" M			453.82 M		
IT 1 DP 595824	IS II SO 31270	ob2	191°33'43" M			667.68 M		
IT 1 DP 595824	IR II DPS 8156	ob3	97°14'40" M			324.09 M		
IT 1 DP 595824	IT II DPS 62781	ob4	97°36'18" M			327.58 M		
IT 1 DP 595824	IR 2 DP 595824	ob5	88°54'05" M			375.36 M		
IT 1 DP 595824	IS I DPS 8156	ob6	96°47'45" M			282.51 M		
IT 1 DP 595824	IT I DPS 61894	ob7	6°17'28" M			272.22 M		
IT 1 DP 595824	IT III DPS 61894	ob8	350°41'30" M			166.25 M		
IT 1 DP 595824	IS IV DPS 62871	ob9	93°46'10" M			190.30 M		
IT 1 DP 595824	IB I DPS 1528	ob10	160°58'16" M			352.65 M		
IT 1 DP 595824	PEG XX DPS 1528	ob11	95°32'30" M			269.96 M		
IT 1 DP 595824	PEG 102 DP 595824	ob12	50°12'20" M			239.74 M		
IS II SO 31270	IB I DPS 1528	ob1	37°48'00" M			405.94 M		
IB I DPS 1528	IT II DPS 62781	ob24	35°52'15" M			357.91 M		
IR II DPS 8156	IR IV DPS 8156	ob15	48°12'00" A	DPS 8156	0°00'00"	72.10 A	DPS 8156	
IR IV DPS 8156	PEG (19) DPS 8156	ob36	43°58'00" A	DPS 8156	0°00'00"	19.51 A	DPS 8156	
PEG (19) DPS 8156	PEG (20) SO 13840	ob39	36°23'30" A	DPS 8156	0°00'00"	75.84 A	DPS 8156	
PEG (20) SO 13840	PEG (21) SO 13840	ob40	313°07'00" A	SO 13840	0°00'00"	20.26 A	SO 13840	
PEG (21) SO 13840	PEG (22) ML 7816	ob41	216°23'30" A	DPS 8156	0°00'00"	54.01 A	ML 7816	Class B
PEG (22) ML 7816	PEG 101 DP 595824	ob43	216°23'30" A	DPS 8156	0°00'00"	39.11 C		Class B
PEG 101 DP 595824	PEG (83) DPS 8156	ob44	216°23'30" A	DPS 8156	0°00'00"	69.84 C		Class B
PEG (83) DPS 8156	IR II DPS 8156	ob116	187°57'00" A	DPS 8156	0°00'00"	5.89 A	DPS 8156	
IR IV DPS 8156	IR 2 DP 595824	ob37	82°32'00" C			0.04 C		
IT II DPS 62781	IR 2 DP 595824	ob17	45°01'30" M			71.52 M		
IR II DPS 8156	IT II DPS 62781	ob16	127°58'00" A	DPS 62781	0°00'00"	4.05 A	DPS 62781	
IS I DPS 8156	PEG IX DPS 1528	ob19	136°55'00" A	DPS 8156	0°00'00"	38.58 A	DPS 8156	
PEG IX DPS 1528	IT II DPS 62781	ob30	44°21'00" A	DPS 62781	0°00'00"	25.52 A	DPS 62781	
PEG IX DPS 1528	IR II DPS 8156	ob31	35°13'30" A	DPS 8156	0°00'00"	25.39 A	DPS 8156	
IS IV DPS 62871	PEG V DPS 1528	ob23	308°00'45" A	DPS 62781	0°00'00"	2.03 A	DPS 62781	
PEG V DPS 1528	PEG III DPS 1528	ob32	139°08'30" A	DPS 1528	0°00'00"	84.78 A	DPS 1528	

Mark and Vector

Survey Number DP 595824

Meridional Circuit Mount Eden 2000

From	To	Code	Bearing	Adpt Surv	Bearing Correction	Distance	Adpt Surv	Class
PEG III DPS 1528	IB II DPS 1528	ob33	130°27'30"	A DPS 1528	0°00'00"	43.79 A	DPS 1528	
IB II DPS 1528	PEG IX DPS 1528	ob34	35°13'30"	A DPS 1528	0°00'00"	51.63 A	DPS 1528	
IT I DPS 61894	IT VI DPS 61894	ob20	269°05'50"	A DPS 61894	0°00'00"	191.60 A	DPS 61894	
IT VI DPS 61894	IT III DPS 61894	ob55	127°30'30"	A DPS 61894	0°00'00"	169.99 A	DPS 61894	
IT III DPS 61894	IT I DPS 61894	ob21	28°02'00"	M		120.68 M		
PEG XX DPS 1528	IS I DPS 8156	ob26	121°55'00"	A DPS 8156	0°00'00"	13.93 A	DPS 8156	
PEG XX DPS 1528	PEG (24) DPS 8156	ob27	130°07'00"	A DPS 8156	0°00'00"	18.31 A	DPS 8156	Class B
PEG (24) DPS 8156	PEG (25) DPS 8156	ob45	36°15'00"	A DPS 8156	0°00'00"	25.80 A	DPS 8156	Class B
PEG (25) DPS 8156	PEG (83) DPS 8156	ob46	126°23'30"	A DPS 8156	0°00'00"	30.28 A	DPS 8156	Class B
IT III DPS 61894	PEG (26) DP 17392	ob22	179°17'00"	A DPS 61894	0°00'00"	68.04 A	DPS 61894	
PEG (26) DP 17392	PEG III DP 17392	ob47	81°41'00"	A DP 17392	0°00'00"	20.12 A	DP 17392	
PEG III DP 17392	PEG (28) ML 7816	ob48	52°27'00"	A DP 17392	0°00'00"	90.97 A	DP 17392	
PEG (28) ML 7816	PEG XXVIII DP 17392	ob49	107°35'00"	A DP 17392	0°00'00"	56.71 A	DP 17392	Class B
PEG XXVIII DP 17392	PEG (22) ML 7816	ob51	107°35'00"	A DP 17392	0°00'00"	279.97 A	DP 17392	
PEG XX DPS 1528	PEG 103 DP 595824	ob28	310°07'00"	A DP 17392	0°00'00"	170.38 C		Class B
PEG 103 DP 595824	PEG XXVII DP 17392	ob52	310°07'00"	A DP 17392	0°00'00"	36.46 C		Class B
PEG XXVII DP 17392	PEG XXVIII DP 17392	ob54	17°35'00"	A DP 17392	0°00'00"	31.50 A	DP 17392	Class B
IT 1 DP 595824	PEG 101 DP 595824	ob13	86°40'00"	M		364.38 M		
IR 2 DP 595824	PEG 101 DP 595824	ob18	320°29'00"	M		18.13 M		
IT 1 DP 595824	PEG 103 DP 595824	ob14	58°50'00"	M		161.78 M		
PEG (21) SO 13840	PEG I DP 10800	ob42	49°51'00"	A DP 10800	0°00'00"	2.01 A	DP 10800	Class B
PEG I DP 10800	PEG IA DP 10800	ob56	49°51'00"	A DP 10800	0°00'00"	62.36 A	DP 10800	Class B
PEG IA DP 10800	PEG IB DP 10800	ob58	49°51'00"	A DP 10800	0°00'00"	18.21 A	DP 10800	
PEG IB DP 10800	UNMK (36) DP 23480	ob59	147°09'30"	A DP 23480	0°00'00"	20.28 A	DP 23480	
UNMK (36) DP 23480	PEG (20) SO 13840	ob60	229°51'00"	A DP 23480	0°00'00"	77.63 A	DP 23480	

Mark and Vector

Survey Number DP 595824

Meridional Circuit Mount Eden 2000

From	To	Code	Bearing	Adpt Surv	Bearing Correction	Distance	Adpt Surv	Class
PEG I DP 10800	PEG VIA DP 10800	ob57	327°09'30"	A DP 10800	0°00'00"	235.86 A	DP 10800	
PEG VIA DP 10800	PEG II DP 10800	ob61	327°09'30"	A DP 10800	0°00'00"	20.04 A	DP 10800	
PEG II DP 10800	PEG VII DP 10800	ob62	305°47'30"	A DP 10800	0°00'00"	75.58 A	DP 10800	
PEG VII DP 10800	PEG VI DP 10800	ob63	142°25'00"	A DP 10800	0°00'00"	90.73 A	DP 10800	Class B
PEG VI DP 10800	PEG IA DP 10800	ob64	127°23'20"	A DP 10800	0°00'00"	242.19 A	DP 10800	Class B
PEG VI DP 10800	PEG V DP 10800	ob65	286°04'00"	A DP 10800	0°00'00"	166.61 A	DP 10800	
PEG V DP 10800	PEG VA DP 10800	ob66	7°56'20"	A DP 10800	0°00'00"	19.53 A	DP 10800	
PEG VA DP 10800	PEG VII DP 10800	ob67	86°23'30"	A DP 10800	0°00'00"	102.29 A	DP 10800	Class B
PEG (28) ML 7816	UNMK (43) ML 7816	ob50	287°35'00"	A ML 7816	0°00'00"	4.12 A	ML 7816	Class BD
PEG VA DP 10800	UNMK (44) DP 10800	ob68	266°23'30"	A DP 10800	0°00'00"	3.02 A	DP 10800	Class BD
PEG 103 DP 595824	PEG 102 DP 595824	ob53	33°17'00"	C		83.41 C		Class B
PEG 102 DP 595824	PEG 101 DP 595824	ob29	126°22'30"	C		223.01 C		Class B
IB II DPS 1528	PEG VIII DPS 1528	ob35	215°13'30"	A DPS 1528	0°00'00"	54.96 A	DPS 1528	
PEG VIII DPS 1528	PEG I DP 23480	ob69	217°27'30"	A DPS 1528	0°00'00"	150.58 A	DPS 1528	
PEG I DP 23480	IB I DPS 1528	ob70	210°45'30"	A DPS 1528	0°00'00"	75.85 A	DPS 1528	
IR IV DPS 8156	IR V DPS 8156	ob38	126°11'40"	A DPS 8156	0°00'00"	112.19 A	DPS 8156	
IR V DPS 8156	IS IX DPS 8156	ob72	130°51'40"	A DPS 8156	0°00'00"	113.84 A	DPS 8156	
IS IX DPS 8156	IR X DPS 8156	ob73	158°07'40"	A DPS 8156	0°00'00"	130.94 A	DPS 8156	
IR X DPS 8156	IS I SO 40784	ob74	155°33'00"	A DPS 8156	0°00'00"	71.05 A	DPS 8156	
IS I SO 40784	IS IA SO 40784	ob75	245°22'00"	A SO 40784	0°00'00"	40.23 A	SO 40784	
IS IA SO 40784	IS I SO 43218	ob76	245°22'00"	A SO 43218	0°00'00"	126.63 A	SO 43218	
IS I SO 43218	IT VII DPS 6004	ob77	245°22'00"	A SO 43218	0°00'00"	37.64 A	SO 43218	
IT VII DPS 6004	IT VIII DPS 6004	ob78	245°22'00"	A SO 43218	0°00'00"	47.46 A	SO 43218	
IT VIII DPS 6004	IT IX DPS 6004	ob79	245°22'00"	A DPS 6004	0°00'00"	32.03 A	DPS 6004	
IT IX DPS 6004	IT X DPS 6004	ob80	245°22'00"	A DPS 6004	0°00'00"	162.87 A	DPS 6004	
IT X DPS 6004	IT XI DPS 6004	ob81	245°22'00"	A DPS 6004	0°00'00"	67.63 A	DPS 6004	
IT XI DPS 6004	IT XII DPS 6004	ob82	245°22'00"	A DPS 6004	0°00'00"	41.52 A	DPS 6004	
IT XII DPS 6004	IB I DPS 1528	ob83	357°27'00"	A DPS 6004	0°00'00"	218.33 A	DPS 6004	
IT XII DPS 6004	IR V SO 43218	ob84	326°02'30"	A SO 43218	0°00'00"	124.68 A	SO 43218	
IR V SO 43218	IR IV SO 43218	ob89	81°21'10"	A SO 43218	0°00'00"	122.13 A	SO 43218	

Mark and Vector

Survey Number DP 595824

Meridional Circuit Mount Eden 2000

From	To	Code	Bearing	Adpt Surv	Bearing Correction	Distance	Adpt Surv	Class
IR IV SO 43218	IR VI SO 43218	ob91	81°07'40"	A SO 43218	0°00'00"	226.41	A SO 43218	
IR VI SO 43218	PEG (65) SO 43218	ob94	69°24'00"	A SO 43218	0°00'00"	42.29	A SO 43218	
PEG (65) SO 43218	IS I SO 43218	ob96	103°23'00"	A SO 43218	0°00'00"	40.41	A SO 43218	
IR V SO 43218	IR III SO 43218	ob90	326°02'30"	A SO 43218	0°00'00"	64.88	A SO 43218	
IR III SO 43218	IT VII SO 43218	ob97	80°38'00"	A SO 43218	0°00'00"	122.87	A SO 43218	
IT VII SO 43218	IS VIII SO 43218	ob98	80°38'00"	A SO 43218	0°00'00"	193.38	A SO 43218	
IS VIII SO 43218	IR II SO 43218	ob100	80°38'00"	A SO 43218	0°00'00"	118.55	A SO 43218	
IR II SO 43218	IS I SO 43218	ob101	155°05'00"	A SO 43218	0°00'00"	72.54	A SO 43218	
IT VII SO 43218	IB I DPS 1528	ob99	328°30'00"	A SO 43218	0°00'00"	48.00	A SO 43218	
IR IV SO 43218	IT XVIII DPS 6004	ob92	147°44'40"	A SO 43218	0°00'00"	14.67	A SO 43218	
IT XVIII DPS 6004	IT X DPS 6004	ob102	147°44'40"	A SO 43218	0°00'00"	75.48	A SO 43218	
PEG I DP 23480	PEG II DP 23480	ob71	121°38'00"	A DP 23480	0°00'00"	17.58	A DP 23480	
PEG II DP 23480	PEG III DP 23480	ob103	121°38'00"	A DP 23480	0°00'00"	90.36	A DP 23480	Class B
PEG III DP 23480	PEG (75) SO 43218	ob104	100°41'00"	A DP 23480	0°00'00"	62.84	A SO 43218	Class B
PEG (75) SO 43218	IS VIII SO 43218	ob105	105°04'00"	A SO 43218	0°00'00"	24.30	A SO 43218	
IB I DPS 1528	PEG Ia DPS 6004	ob25	81°19'00"	A DPS 6004	0°00'00"	14.24	A DPS 6004	
PEG Ia DPS 6004	PEG II DP 23480	ob85	36°23'30"	A DPS 6004	0°00'00"	66.81	A DPS 6004	Class B
PEG Ia DPS 6004	PEG Ib SO 43218	ob86	180°21'00"	A DPS 6004	0°00'00"	9.86	A DPS 6004	Class B
PEG Ib SO 43218	PEG (61) SO 43218	ob87	144°17'00"	A DPS 6004	0°00'00"	27.42	A SO 43218	Class B
PEG (61) SO 43218	PEG (75) SO 43218	ob88	80°38'00"	A SO 43218	0°00'00"	164.62	A SO 43218	Class B
IR IV SO 43218	PEG (73) SO 43218	ob93	103°33'00"	A SO 43218	0°00'00"	21.20	A SO 43218	
PEG (73) SO 43218	PEG IV SO 37732	ob106	144°17'00"	A SO 43218	0°00'00"	0.08	A SO 43218	Class B
PEG IV SO 37732	IT XVIII DPS 6004	ob110	240°10'00"	A DPS 6004	0°00'00"	14.79	A DPS 6004	
PEG IV SO 37732	PEG (1) SO 37732	ob111	156°04'00"	A SO 37732	0°00'00"	52.59	A SO 37732	Class B
PEG (1) SO 37732	PEG (2) SO 37732	ob112	111°00'00"	A SO 37732	0°00'00"	14.20	A SO 37732	Class B
PEG (2) SO 37732	IT X DPS 6004	ob113	201°37'00"	A DPS 6004	0°00'00"	19.33	A DPS 6004	
IR VI SO 43218	PEG (76) SO 43218	ob95	177°05'00"	A SO 43218	0°00'00"	0.82	A SO 43218	

Mark and Vector

Survey Number DP 595824

Meridional Circuit Mount Eden 2000

From	To	Code	Bearing	Adpt Surv	Bearing Correction	Distance	Adpt Surv	Class
PEG (76) SO 43218	PEG (77) SO 43218	ob108	177°05'00"	A SO 43218	0°00'00"	8.11 A	SO 43218	
PEG (77) SO 43218	PEG VIIIa DPS 6004	ob109	177°05'00"	A SO 43218	0°00'00"	8.47 A	SO 43218	Class B
PEG VIIIa DPS 6004	IT VIII DPS 6004	ob115	177°05'00"	A SO 43218	0°00'00"	12.57 A	SO 43218	
PEG (73) SO 43218	PEG (77) SO 43218	ob107	81°21'10"	A SO 43218	0°00'00"	205.86 A	SO 43218	Class B
PEG (2) SO 37732	PEG VIIIa DPS 6004	ob114	65°53'00"	A DPS 6004	0°00'00"	185.58 A	DPS 6004	Class B

Mark Name	Mark Condition	Description
IB I DPS 1528		d0.50m in seal
IR 2 DP 595824		IR IV DPS 8156 disturbed, d0.20m in paddock, 2.8m to fence
IR II DPS 8156		d0.05m in berm
IS I DPS 8156		d0.15m in paddock, 3.1m to east fence, 3.8m to south fence corner
IS IV DPS 62871		d0.20m in paddock
IT 1 DP 595824		d0.15m in berm, 1m to edge of gravel
IT I DPS 61894		d0.20m in paddock
IT II DPS 62781		d0.02m at edge of seal
IT III DPS 61894		d0.25m in garden
PEG (22) ML 7816	Searched For and Not Found	
PEG (24) DPS 8156	Searched For and Not Found	
PEG (83) DPS 8156	Searched For and Not Found	
PEG XXVIII DP 17392	Searched For and Not Found	

*** End of Report ***

LT 595824 Schedule/Memorandum

Land registration district
South Auckland

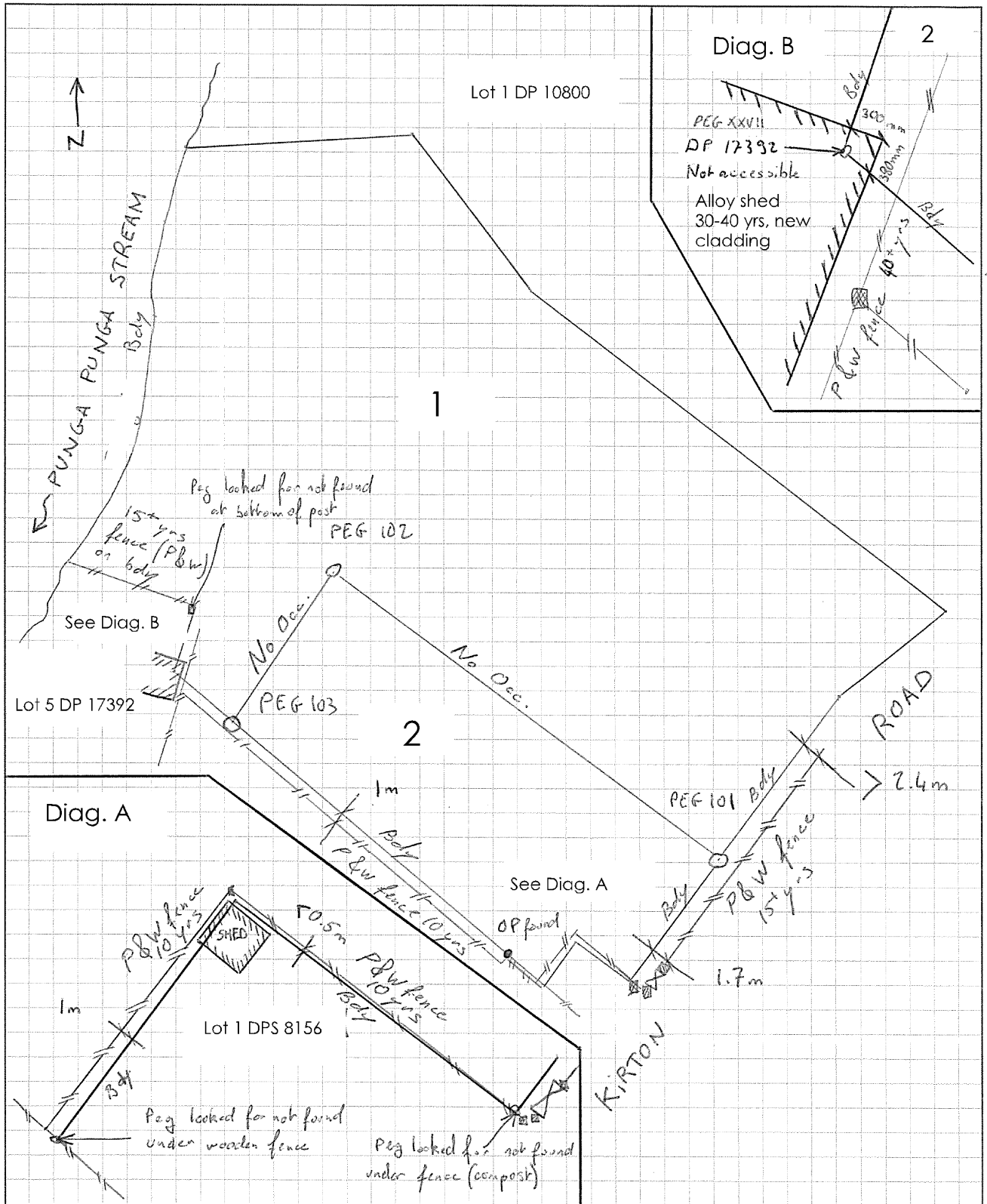
Territorial authority
Ruapehu District

Amalgamation Conditions

Parcels shown with a prefix of *HL* include height-limited boundaries

That Lots 1 and 3 hereon and Part Lot 2 DP 23480 be held in the same Record of Title.
LINZ Reference: 1857224

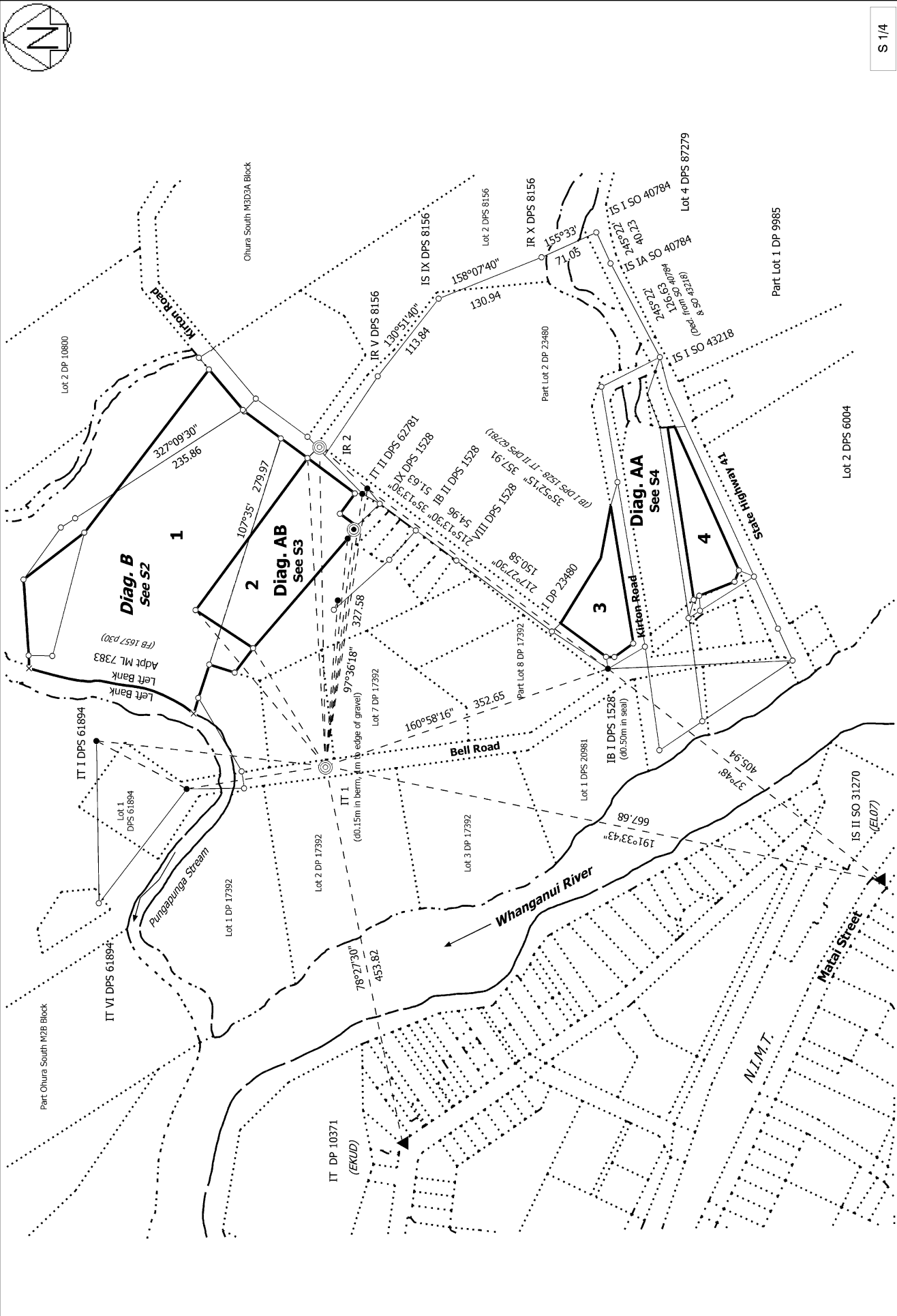
Occupation Diagram



	Notes					Drawing Title			
	Not to Scale					Occupation Diagram			
	Designed					Drawing Number			
CSO		Checked		Approved DS		Date 31/03/23		Scale	
					220538-SK002				

Taupo (Head Office) T: +64 7 378 6405 | Level 1, 4 Horomatangi Street | PO Box 165, Taupo 3351

Diag. A



S 1/4

Land District: South Auckland

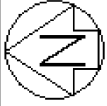
Digitally Generated Plan

Generated on: 16/04/2024 09:06am Page 10 of 15

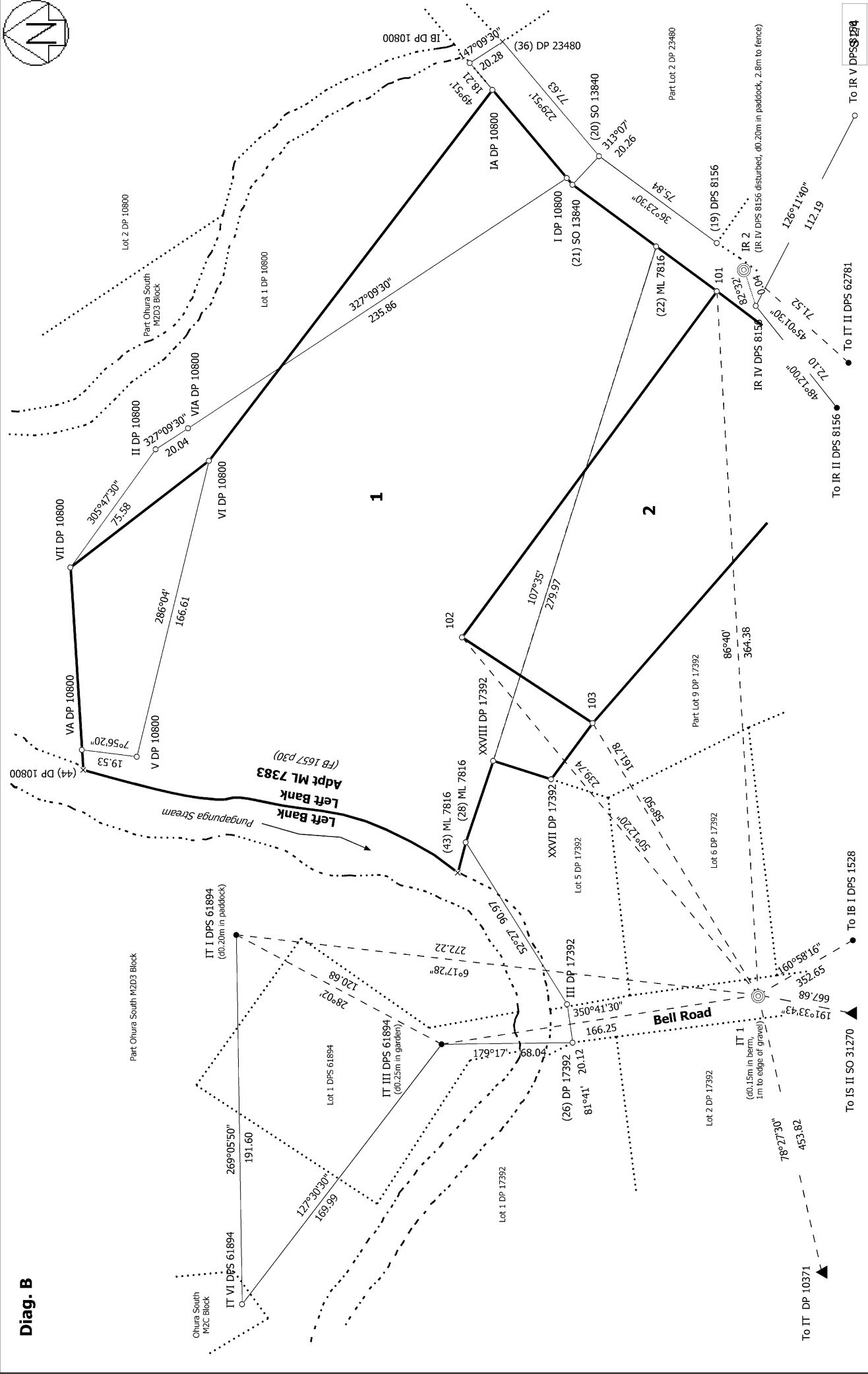
Lots 1 to 4 being a Subdivision of Part Lot 5 DPS 6004, Lot 1 DP 23480 & Part Lot 10 DP 17392

Surveyor: Dean Sherritt
Firm: Cheal Consultants Limited
Date of Survey: 2/10/2023

Record of Survey
LT 595824
Approved on: 16/04/2024

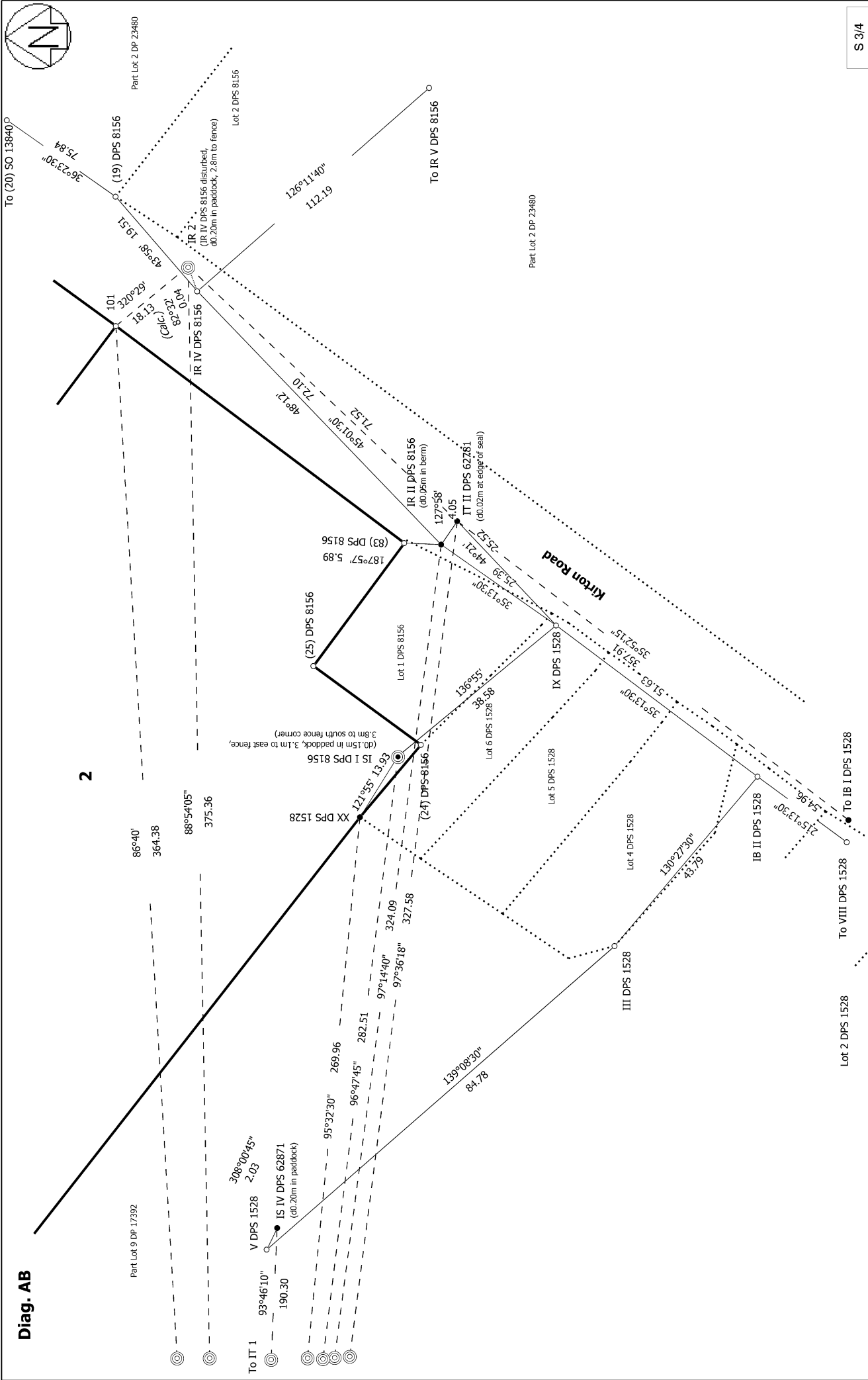


Diag. B



<p>Land District: South Auckland</p> <p>Digitally Generated Plan</p> <p>Generated on: 16/04/2024 05:06am Page 11 of 15</p>	<p>Lots 1 to 4 being a Subdivision of Part Lot 5 DPS 6004, Lot 1 DP 23480 & Part Lot 10 DP 17392</p> <p>Surveyor: Dean Sherritt Firm: Cheal Consultants Limited Date of Survey: 2/10/2023</p>	<p>Record of Survey LT 595824 Approved on: 16/04/2024</p>
---	--	--

Diag. AB



Land District: South Auckland
Digitally Generated Plan
Generated on: 16/04/2024 09:06am | Page 12 of 15

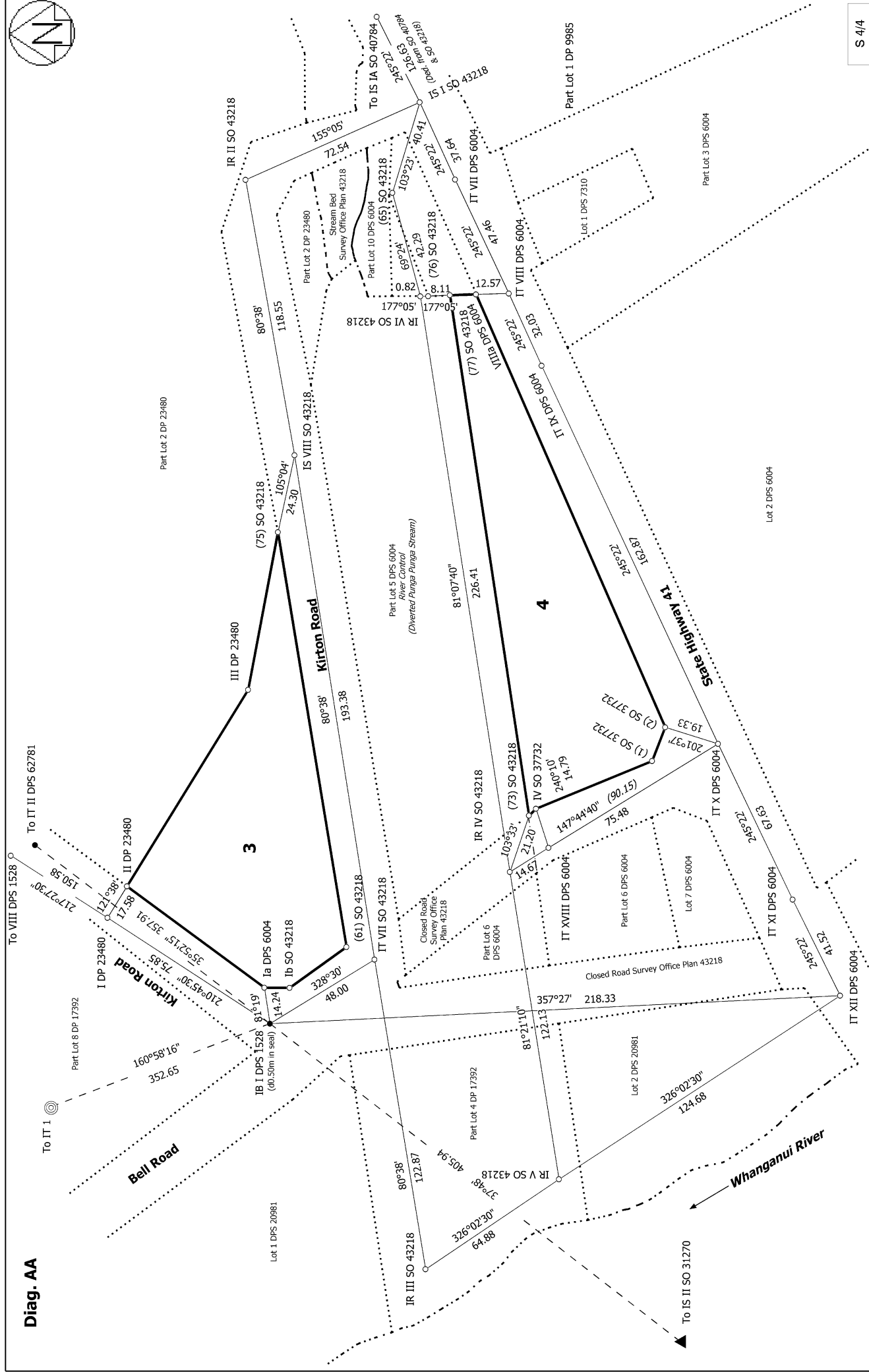
Lots 1 to 4 being a Subdivision of Part Lot 5 DPS 6004, Lot 1 DP 23480 & Part Lot 10 DP 17392

Surveyor: Dean Sherritt
Firm: Cheal Consultants Limited
Date of Survey: 2/10/2023

Record of Survey
LT 595824
Approved on: 16/04/2024



Diag. AA



S 4/4

Land District: South Auckland
Digitally Generated Plan
 Generated on: 16/04/2024 05:06am Page 13 of 15

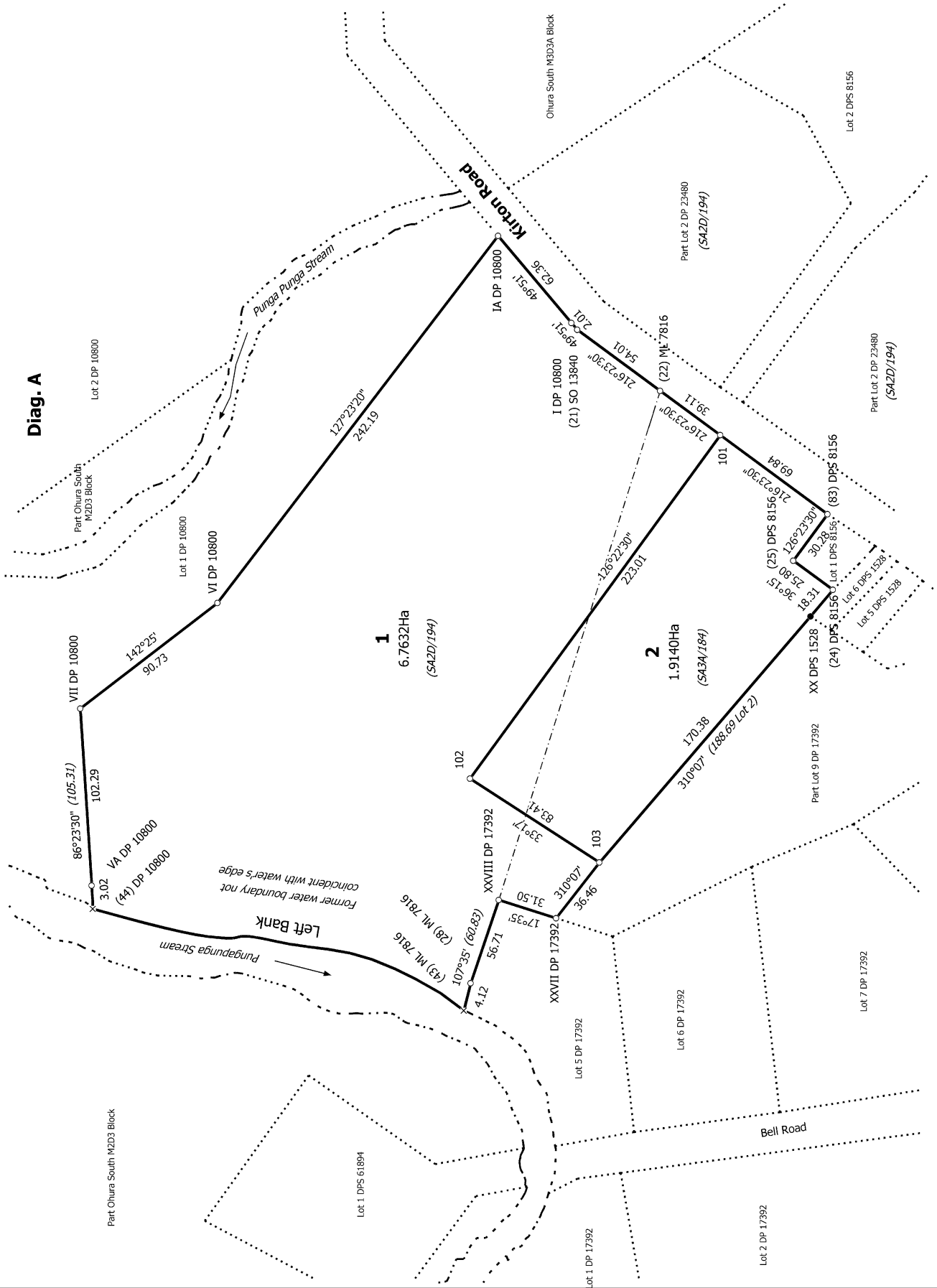
Lots 1 to 4 being a Subdivision of Part Lot 5 DPS 6004, Lot 1 DP 23480 & Part Lot 10 DP 17392

Surveyor: Dean Sherritt
 Firm: Cheal Consultants Limited
 Date of Survey: 2/10/2023

Record of Survey
 LT 595824
 Approved on: 16/04/2024



Diag. A

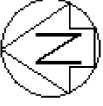


T 1/2

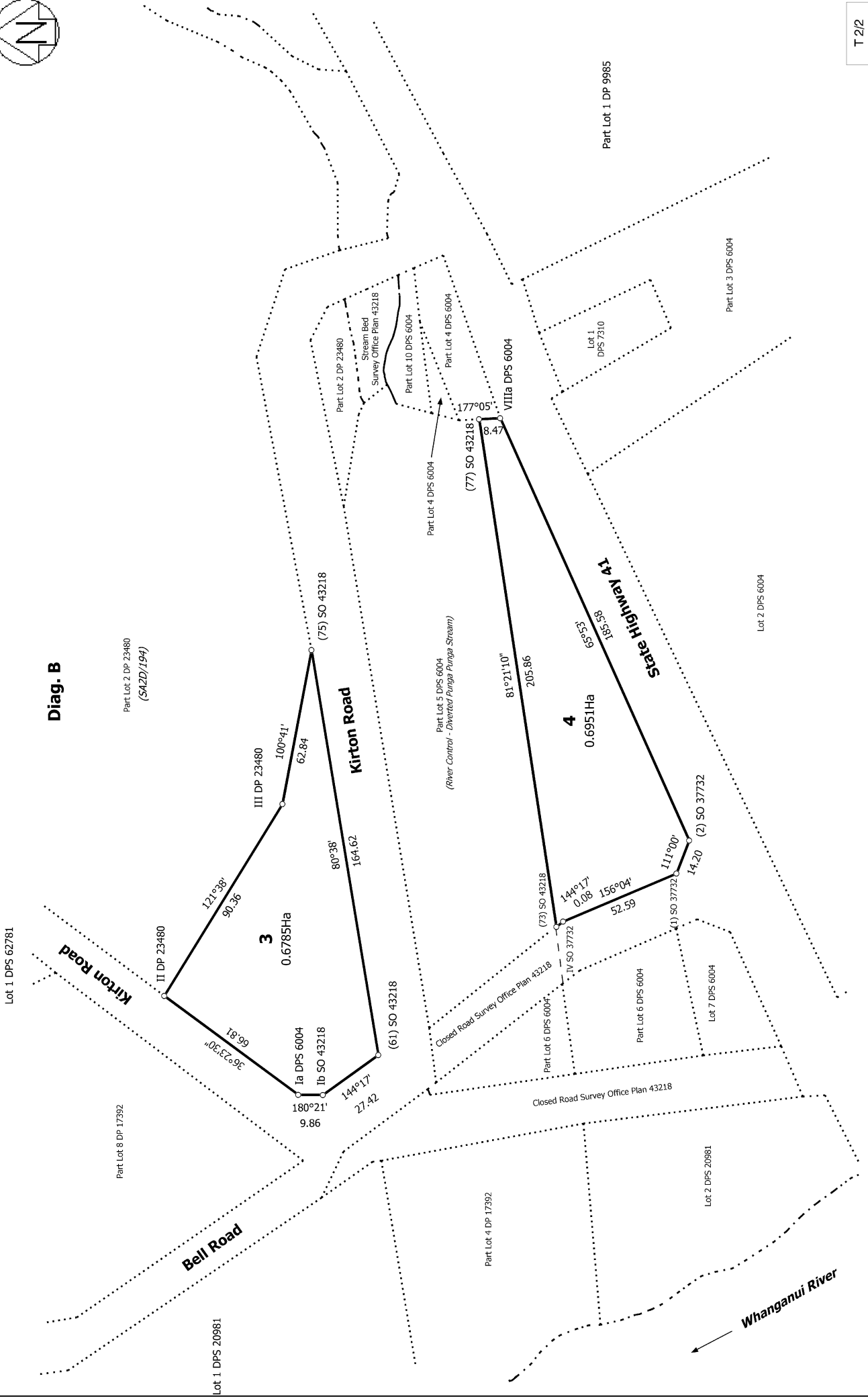
Lots 1 to 4 being a Subdivision of Part Lot 5 DPS 6004, Lot 1 DP 23480 & Part Lot 1 DP 17392

Surveyor: Dean Sherritt
 Firm: Cheal Consultants Limited
 Date of Survey: 2/10/2023

Record of Survey
 LT 595824
 Approved on: 16/04/2024



Diag. B



T 2/2

Record of Survey
 LT 595824
 Approved on: 16/04/2024

Surveyor: Dean Sherritt
 Firm: Cheal Consultants Limited
 Date of Survey: 2/10/2023

Lots 1 to 4 being a Subdivision of Part Lot 5 DPS 6004, Lot 1 DP 23480 & Part Lot 10 DP 17392

Land District: South Auckland
Digitally Generated Plan
 Generated on: 16/04/2024 09:06am | Page 15 of 15