

Record of Survey - LT 594733

Survey Number LT 594733
Surveyor Reference 22146 Kane
Surveyor Stuart John Taylor
Survey Firm Measured Land Surveys Limited
Surveyor Declaration I Stuart John Taylor, being a licensed cadastral surveyor, certify that--
 (a) this dataset provided by me and its related survey are accurate, correct and in accordance with the Cadastral Survey Act 2002 and Cadastral Survey Rules 2021; and
 (b) the survey was undertaken by me or under my personal direction.
 Declared on 21 Sep 2023 10:59 AM

Survey Details

Dataset Description Lots 1-4 being a Subdivision of Lot 1 & 4 DP 405266 and Section 1 & Part Section 2 SO 23635
Purpose LT Subdivision
Status Approved as to Survey **Type** Survey
Land District Otago **Survey Class** Class B
Meridional Circuit Lindis Peak 2000 **Vertical Datum** None

Survey Dates

Surveyed Date 07/08/2023 **Certified Date** 21/09/2023
Submitted Date 21/09/2023 10:59:37 **Survey Approval Date** 23/09/2023
Deposit Date

Referenced Surveys

Survey Number	Land District	Bearing Correction
SO 1185	Otago	0°00'00"
SO 21849	Otago	0°00'00"
SO 21851	Otago	0°00'00"
SO 24810	Otago	0°00'00"
SO 21850	Otago	0°00'00"
DP 309152	Otago	0°00'00"
SO 377210	Otago	0°00'00"
DP 389023	Otago	0°00'00"
DP 405266	Otago	0°00'00"
DP 425677	Otago	0°00'00"

Territorial Authorities

Queenstown-Lakes District

Comprised In

RT 418320
 RT 418315
 RT 418318
 RT OT14B/775

Record of Survey - LT 594733

Created Parcels

Parcels	Parcel Intent	Area	RT Reference
Lot 1 Deposited Plan 594733	Fee Simple Title	29.6224 Ha	1146798
Lot 2 Deposited Plan 594733	Fee Simple Title	31.4980 Ha	1146799
Lot 3 Deposited Plan 594733	Fee Simple Title	23.5523 Ha	1146800
Lot 4 Deposited Plan 594733	Fee Simple Title	0.5166 Ha	1146801
Area BB Deposited Plan 594733	Easement		
Area AA Deposited Plan 594733	Easement		
Area C Deposited Plan 594733	Easement		
Area D Deposited Plan 594733	Easement		
Area E Deposited Plan 594733	Easement		
Area G Deposited Plan 594733	Easement		
Area I Deposited Plan 594733	Easement		
Area J Deposited Plan 594733	Easement		
Area EE Deposited Plan 594733	Easement		
Area DD Deposited Plan 594733	Easement		
Area H Deposited Plan 594733	Easement		
Area Z Deposited Plan 594733	Covenant - Land		
Total Area		85.1893 Ha	

Mark and Vector

Survey Number DP 594733
Meridional Circuit Lindis Peak 2000

From	To	Code	Bearing	Adpt Surv	Bearing Correction	Distance	Adpt Surv	Class
IT VII SO 24810	IT III SO 24810	ob17	291°56'10" M			514.60 M		
IT VII SO 24810	IT 3 DP 594733	ob18	285°51'20" M			411.67 M		
IT VII SO 24810	IT 2 DP 594733	ob19	214°40'30" M			291.21 M		
IT VII SO 24810	IT XI SO 24810	ob20	197°49'10" M			221.65 M		
IT VII SO 24810	IT I SO 377210	ob21	183°32'20" M			275.93 M		
IT VII SO 24810	IT 4 DP 594733	ob22	162°46'00" M			459.05 M		
IT VII SO 24810	IT VI SO 21849	ob23	130°24'50" M			360.30 M		
IT VII SO 24810	IT VII SO 21849	ob24	104°57'20" M			212.00 M		
IT VII SO 24810	IT VIII SO 21850	ob25	72°57'20" M			246.95 M		
IT VII SO 24810	IT 1 DP 594733	ob26	174°36'30" M			226.79 M		
IT III SO 24810	IT 3 DP 594733	ob0	134°26'30" M			113.91 M		
IT 3 DP 594733	IT XI SO 24810	ob1	134°35'00" M			460.83 M		
IT XI SO 24810	IT I SO 377210	ob8	141°43'50" M			82.01 M		
IT I SO 377210	IT 4 DP 594733	ob9	136°49'10" M			223.62 M		
IT 2 DP 594733	IT XI SO 24810	ob3	73°46'50" M			101.90 M		
IT 3 DP 594733	IT 2 DP 594733	ob2	146°47'50" M			420.63 M		
IT 1 DP 594733	IT I SO 377210	ob28	217°42'00" M			62.71 M		
IT 4 DP 594733	IT VI SO 21849	ob12	34°01'40" M			247.18 M		
IT VI SO 21849	IT VII SO 21849	ob13	338°45'20" M			191.91 M		
IT VII SO 21849	IT VIII SO 21850	ob14	13°49'30" M			130.89 M		
IT 1 DP 594733	IT XI SO 24810	ob29	279°24'30" M			90.36 M		
IT I SO 377210	PEG 12 SO 377210	ob10	178°41'00" A	SO 377210	0°00'00"	46.87 A	SO 377210	
IT I SO 377210	PEG 13 SO 377210	ob11	278°44'20" A	SO 377210	0°00'00"	135.39 A	SO 377210	
IT VII SO 21849	POST (10) SO 21849	ob15	186°47'00" M			18.97 M		
IT VII SO 21849	POST 15 DP 594733	ob16	245°47'00" M			85.35 M		
IT 1 DP 594733	PEG 16 DP 594733	ob30	74°27'00" M			17.95 M		
IT 1 DP 594733	PEG 17 DP 594733	ob31	340°01'00" M			41.18 M		
IT 2 DP 594733	PEG 18 DP 594733	ob4	73°50'40" M			80.15 M		
IT 2 DP 594733	DISK 19 DP 594733	ob5	105°35'30" M			82.63 M		
PEG 13 SO 377210	PEG 20 DP 594733	ob33	116°33'20" A	SO 377210	0°00'00"	63.39 C		Class B
PEG 20 DP 594733	PEG 12 SO 377210	ob42	116°33'20" A	SO 377210	0°00'00"	87.42 C		Class B
IT 2 DP 594733	PEG 20 DP 594733	ob6	121°24'30" M			83.81 M		

Mark and Vector

Survey Number DP 594733

Meridional Circuit Lindis Peak 2000

From	To	Code	Bearing	Adpt Surv	Bearing Correction	Distance	Adpt Surv	Class
IT 2 DP 594733	PEG 13 SO 377210	ob7	135°59'00"	M		21.34 M		
IT 1 DP 594733	PEG 12 SO 377210	ob32	201°07'20"	M		103.42 M		
POST (10) SO 21849	POST 15 DP 594733	ob35	257°55'40"	C		77.31 C		Class B
POST 15 DP 594733	PEG 16 DP 594733	ob37	213°57'20"	C		158.23 C		Class B
PEG 16 DP 594733	PEG 17 DP 594733	ob38	317°13'00"	C		46.18 C		Class B
PEG 17 DP 594733	PEG 18 DP 594733	ob39	252°34'40"	C		100.54 C		Class B
PEG 18 DP 594733	DISK 19 DP 594733	ob40	176°39'00"	C		44.59 C		Class B
DISK 19 DP 594733	PEG 20 DP 594733	ob41	200°35'00"	C		22.94 C		Class B
IT VII SO 24810	IT VIII SO 24810	ob27	338°04'00"	A SO 24810	0°00'00"	224.31 A SO 24810		
IT VIII SO 24810	IT I SO 24810	ob43	303°30'15"	A SO 24810	0°00'00"	175.92 A SO 24810		
IT I SO 24810	IT A SO 377210	ob44	322°45'07"	A SO 377210	0°00'00"	1,393.97 A SO 377210		
IT A SO 377210	IT IX SO 21850	ob48	131°07'27"	A SO 377210	0°00'00"	1,759.31 A SO 377210		
IT IX SO 21850	IT VIII SO 21850	ob56	184°37'10"	A SO 21850	0°00'00"	185.96 A SO 21850		
IT I SO 24810	PEG 49 DP 405266	ob45	89°58'20"	A DP 405266	0°00'00"	188.25 A DP 405266		
IT I SO 24810	PEG 48 DP 405266	ob46	89°58'40"	A DP 405266	0°00'00"	133.12 A DP 405266		
IT I SO 24810	POST 77 DP 405266	ob47	88°05'00"	A DP 405266	0°00'00"	3.15 A DP 405266		
PEG 48 DP 405266	PEG 49 DP 405266	ob58	89°57'40"	C		55.13 C		Class B
PEG 49 DP 405266	POST 76 DP 405266	ob57	89°57'00"	A DP 405266	0°00'00"	165.39 A DP 405266		Class B
POST 76 DP 405266	POST (5) SO 21850	ob59	75°42'00"	A DP 405266	0°00'00"	86.45 A DP 405266		Class B
POST (5) SO 21850	PEG (2) SO 21850	ob60	155°40'00"	A SO 21850	0°00'00"	11.67 A SO 21850		Class B
PEG (2) SO 21850	POST (4) SO 21850	ob61	155°40'00"	A SO 21850	0°00'00"	22.23 A SO 21850		Class B
POST (4) SO 21850	POST (12) SO 21850	ob62	164°57'00"	A SO 21850	0°00'00"	46.79 A SO 21850		Class B
POST (12) SO 21850	POST (1) SO 21850	ob63	177°32'00"	A SO 21850	0°00'00"	62.08 A SO 21850		Class B
POST (1) SO 21850	POST (6) SO 21849	ob64	189°38'00"	A SO 21850	0°00'00"	213.56 A SO 21850		Class B
POST (6) SO 21849	POST (10) SO 21849	ob65	177°08'00"	A SO 21849	0°00'00"	51.87 A SO 21849		Class B

Mark and Vector

Survey Number DP 594733

Meridional Circuit Lindis Peak 2000

From	To	Code	Bearing	Adpt Surv	Bearing Correction	Distance	Adpt Surv	Class
IT A SO 377210	POST 14 SO 377210	ob49	151°47'52"	A SO 377210	0°00'00"	1,890.66	A SO 377210	
IT A SO 377210	UNMK 450 SO 377210	ob50	152°24'04"	A SO 377210	0°00'00"	1,823.79	A SO 377210	
IT A SO 377210	UNMK 451 SO 377210	ob51	155°17'07"	A SO 377210	0°00'00"	1,668.98	A SO 377210	
IT A SO 377210	UNMK 452 SO 377210	ob52	155°45'20"	A SO 377210	0°00'00"	1,662.11	A SO 377210	
IT A SO 377210	UNMK 453 SO 377210	ob53	157°18'03"	A SO 377210	0°00'00"	1,622.49	A SO 377210	
IT A SO 377210	UNMK 454 SO 377210	ob54	158°12'01"	A SO 377210	0°00'00"	1,596.41	A SO 377210	
IT A SO 377210	IT 1 DP 389023	ob55	161°53'53"	A DP 389023	0°00'00"	1,453.67	A DP 389023	
IT 1 DP 389023	IT 8 DP 405266	ob74	26°11'20"	A DP 405266	0°00'00"	471.13	A DP 405266	
IT 8 DP 405266	IT I SO 24810	ob79	129°18'00"	A DP 405266	0°00'00"	237.89	A DP 405266	
IT 1 DP 389023	PEG 78 DP 405266	ob75	129°16'00"	A DP 405266	0°00'00"	98.61	A DP 405266	
IT 1 DP 389023	Peg 133 DP 389023	ob76	141°05'00"	A DP 389023	0°00'00"	9.30	A DP 389023	
IT 1 DP 389023	PEG 131 DP 389023	ob77	255°44'00"	A DP 389023	0°00'00"	2.55	A DP 389023	
IT 1 DP 389023	PEG 74 DP 405266	ob78	7°50'00"	A DP 405266	0°00'00"	26.34	A DP 405266	
POST 77 DP 405266	PEG 48 DP 405266	ob88	90°01'20"	A DP 405266	0°00'00"	129.97	A DP 405266	Class B
PEG 13 SO 377210	POST 14 SO 377210	ob34	276°32'00"	A SO 377210	0°00'00"	30.03	A SO 377210	Class B
PEG 78 DP 405266	UNMK 79 DP 405266	ob80	223°37'00"	A DP 405266	0°00'00"	1.95	A DP 405266	Class B
PEG 74 DP 405266	UNMK 1 DP 405266	ob86	251°11'00"	A DP 405266	0°00'00"	11.57	A DP 405266	Class B
UNMK 1 DP 405266	UNMK 75 DP 405266	ob92	251°11'00"	A DP 405266	0°00'00"	17.32	A DP 405266	Class B
PEG 74 DP 405266	UNMK 73 DP 405266	ob87	71°11'00"	A DP 405266	0°00'00"	0.29	A DP 405266	Class B
UNMK 73 DP 405266	POST 72 DP 405266	ob90	71°11'00"	A DP 405266	0°00'00"	121.48	A DP 405266	Class B
POST 72 DP 405266	POST 71 DP 405266	ob93	22°34'00"	A DP 405266	0°00'00"	4.40	A DP 405266	Class B
POST 71 DP 405266	UNMK 31 DP 425677	ob94	14°23'20"	A DP 405266	0°00'00"	359.79	A DP 425677	Class B
UNMK 31 DP 425677	POST 70 DP 405266	ob241	14°23'20"	A DP 405266	0°00'00"	19.60	A DP 425677	Class B
POST 70 DP 405266	UNMK 27 DP 425677	ob243	80°47'00"	A DP 405266	0°00'00"	3.33	A DP 425677	Class B
UNMK 27 DP 425677	POST 69 DP 405266	ob95	80°47'00"	A DP 405266	0°00'00"	1.15	A DP 425677	Class B

Mark and Vector

Survey Number DP 594733

Meridional Circuit Lindis Peak 2000

From	To	Code	Bearing	Adpt Surv	Bearing Correction	Distance	Adpt Surv	Class
POST 69 DP 405266	POST 68 DP 405266	ob244	61°54'00"	A DP 405266	0°00'00"	24.33 A	DP 405266	Class B
POST 68 DP 405266	POST 67 DP 405266	ob98	0°12'40"	A DP 405266	0°00'00"	337.88 A	DP 405266	Class B
POST 67 DP 405266	POST 66 DP 405266	ob99	28°57'00"	A DP 405266	0°00'00"	35.98 A	DP 405266	Class B
POST 66 DP 405266	UNMK 24 DP 425677	ob100	274°42'40"	A DP 405266	0°00'00"	61.24 A	DP 425677	Class B
UNMK 24 DP 425677	UNMK 13 DP 425677	ob101	274°42'40"	A DP 405266	0°00'00"	8.62 A	DP 425677	Class B
UNMK 13 DP 425677	PEG 64 DP 405266	ob103	274°42'40"	A DP 405266	0°00'00"	236.11 A	DP 425677	Class B
PEG 64 DP 405266	POST 65 DP 405266	ob105	275°11'00"	A DP 405266	0°00'00"	13.80 A	DP 405266	Class B
POST 65 DP 405266	POST (2) DP 309152	ob107	267°31'00"	A DP 405266	0°00'00"	23.91 A	DP 405266	Class B
POST (2) DP 309152	POST (7) DP 309152	ob108	43°58'00"	A DP 309152	0°00'00"	6.26 A	DP 309152	Class B
POST (7) DP 309152	PEG (2) DP 309152	ob109	359°25'00"	A DP 309152	0°00'00"	32.82 A	DP 309152	Class B
PEG (2) DP 309152	POST (5) DP 309152	ob111	28°00'00"	A DP 309152	0°00'00"	53.93 A	DP 309152	Class B
POST (5) DP 309152	POST (1) DP 309152	ob112	113°24'00"	A DP 309152	0°00'00"	24.23 A	DP 309152	Class B
POST (1) DP 309152	UNMK 4 DP 425677	ob113	70°20'00"	A DP 309152	0°00'00"	31.83 A	DP 425677	Class B
UNMK 4 DP 425677	UNMK 3 DP 425677	ob114	70°20'00"	A DP 309152	0°00'00"	3.00 A	DP 425677	Class B
UNMK 3 DP 425677	UNMK 2 DP 425677	ob115	70°20'00"	A DP 309152	0°00'00"	4.28 A	DP 425677	Class B
UNMK 2 DP 425677	UNMK 1 DP 425677	ob116	70°20'00"	A DP 309152	0°00'00"	12.01 A	DP 425677	Class B
UNMK 1 DP 425677	POST (6) DP 309152	ob117	70°20'00"	A DP 309152	0°00'00"	11.79 A	DP 425677	Class B
POST (6) DP 309152	POST (3) DP 309152	ob118	70°41'00"	A DP 309152	0°00'00"	106.65 A	DP 309152	Class B
POST (3) DP 309152	UNMK (11) DP 309152	ob119	24°09'00"	A DP 309152	0°00'00"	11.84 A	DP 309152	Class B
UNMK (11) DP 309152	PEG (1) DP 309152	ob120	24°09'00"	A DP 309152	0°00'00"	12.05 A	DP 309152	Class B
PEG (1) DP 309152	PEG 1 DP 405266	ob121	119°42'00"	A SO 21850	0°00'00"	32.65 A	DP 309152	Class B
PEG 1 DP 405266	PEG 2 DP 405266	ob122	119°42'00"	A SO 21850	0°00'00"	20.00 A	DP 405266	Class B
PEG 2 DP 405266	POST (9) SO 21850	ob123	119°42'00"	A SO 21850	0°00'00"	152.71 A	DP 309152	Class B
POST (9) SO 21850	POST SO 21851	ob124	64°37'00"	A SO 21851	0°00'00"	8.37 A	SO 21851	Class B

Mark and Vector

Survey Number DP 594733

Meridional Circuit Lindis Peak 2000

From	To	Code	Bearing	Adpt Surv	Bearing Correction	Distance	Adpt Surv	Class
POST SO 21851	PEG (1) SO 21850	ob125	130°15'00"	A SO 21850	0°00'00"	104.32	A SO 21850	Class B
PEG (1) SO 21850	PEG (1) SO 21851	ob126	141°02'30"	A SO 21850	0°00'00"	174.05	A SO 21850	Class B
PEG (1) SO 21851	POST (11) SO 21850	ob127	141°02'30"	A SO 21850	0°00'00"	395.06	A SO 21850	Class B
POST (11) SO 21850	POST (5) SO 21850	ob128	144°32'30"	A SO 21850	0°00'00"	117.31	A SO 21850	Class B
POST (10) SO 21849	PEG (1) SO 21849	ob36	162°18'00"	A SO 21849	0°00'00"	159.36	A SO 21849	Class B
PEG (1) SO 21849	POST (5) SO 21849	ob129	158°27'00"	A SO 21849	0°00'00"	199.98	A SO 21849	Class B
POST (5) SO 21849	PEG 45 SO 377210	ob130	161°05'30"	A SO 21849	0°00'00"	151.21	A SO 21849	Class B
PEG 45 SO 377210	POST (3) SO 21849	ob131	161°05'30"	A SO 21849	0°00'00"	48.00	A SO 21849	Class B
POST (3) SO 21849	UNMK SO 21849	ob133	172°26'00"	A SO 21849	0°00'00"	57.22	A SO 21849	Class B
UNMK SO 21849	PEG (2) SO 21849	ob134	172°26'00"	A SO 21849	0°00'00"	17.00	A SO 21849	Class B
PEG (2) SO 21849	POST (1) SO 21849	ob135	172°26'00"	A SO 21849	0°00'00"	45.53	A SO 21849	Class B
POST (1) SO 21849	PEG 5 SO 377210	ob136	181°07'00"	A SO 21849	0°00'00"	95.09	A SO 377210	Class B
PEG 5 SO 377210	PEG 4 SO 377210	ob137	269°59'10"	A SO 377210	0°00'00"	25.50	A SO 377210	Class B
PEG 4 SO 377210	UNMK 447 SO 377210	ob138	179°59'10"	A SO 377210	0°00'00"	15.00	A SO 377210	Class B
UNMK 447 SO 377210	PEG (71) SO 377210	ob139	179°59'10"	A SO 377210	0°00'00"	10.00	A SO 377210	Class B
PEG (71) SO 377210	PEG SO 24114	ob141	269°59'10"	A SO 24810	0°00'00"	427.57	A SO 377210	Class B
PEG SO 24114	PEG (72) SO 377210	ob142	269°59'10"	A SO 24810	0°00'00"	15.95	A SO 377210	Class B
PEG (72) SO 377210	UNMK 448 SO 377210	ob143	29°42'40"	A SO 377210	0°00'00"	11.51	A SO 377210	Class B
UNMK 448 SO 377210	PEG 15 SO 377210	ob144	29°42'40"	A SO 377210	0°00'00"	182.08	A SO 377210	Class B
PEG 15 SO 377210	PEG (1) SO 24810	ob145	24°45'50"	A SO 377210	0°00'00"	96.63	A SO 377210	Class B
PEG (1) SO 24810	PEG 9 SO 377210	ob146	350°13'00"	A SO 377210	0°00'00"	75.09	A SO 377210	Class B
PEG 9 SO 377210	PEG 10 SO 377210	ob147	347°22'20"	A SO 377210	0°00'00"	64.33	A SO 377210	Class B
PEG 10 SO 377210	PEG 11 SO 377210	ob148	335°16'40"	A SO 377210	0°00'00"	122.94	A SO 377210	Class B
PEG 11 SO 377210	PEG 12 SO 377210	ob149	326°49'00"	A SO 377210	0°00'00"	14.53	A SO 377210	Class B

Mark and Vector

Survey Number DP 594733

Meridional Circuit Lindis Peak 2000

From	To	Code	Bearing	Adpt Surv	Bearing Correction	Distance	Adpt Surv	Class
POST 14 SO 377210	UNMK 90 DP 594733	ob66	315°53'00"	C		33.66 C		Class B
UNMK 90 DP 594733	UNMK 450 SO 377210	ob150	315°42'00"	C		36.01 C		Class B
UNMK 450 SO 377210	UNMK 102 DP 594733	ob68	317°52'00"	C		8.28 C		Class B
UNMK 102 DP 594733	UNMK 103 DP 594733	ob151	316°08'00"	C		9.79 C		Class B
UNMK 103 DP 594733	UNMK 104 DP 594733	ob152	316°59'00"	C		11.76 C		Class B
UNMK 104 DP 594733	UNMK 105 DP 594733	ob153	317°47'00"	C		12.85 C		Class B
UNMK 105 DP 594733	UNMK 106 DP 594733	ob154	318°43'00"	C		9.81 C		Class B
UNMK 106 DP 594733	UNMK 107 DP 594733	ob155	318°44'00"	C		9.81 C		Class B
UNMK 107 DP 594733	UNMK 108 DP 594733	ob156	316°39'00"	C		7.18 C		Class B
UNMK 108 DP 594733	UNMK 109 DP 594733	ob157	308°35'00"	C		7.88 C		Class B
UNMK 109 DP 594733	UNMK 110 DP 594733	ob158	311°49'00"	C		11.98 C		Class B
UNMK 110 DP 594733	UNMK 111 DP 594733	ob159	309°31'00"	C		9.18 C		Class B
UNMK 111 DP 594733	UNMK 112 DP 594733	ob160	306°26'00"	C		8.80 C		Class B
UNMK 112 DP 594733	UNMK 113 DP 594733	ob161	312°15'00"	C		9.14 C		Class B
UNMK 113 DP 594733	UNMK 114 DP 594733	ob162	307°52'00"	C		10.52 C		Class B
UNMK 114 DP 594733	UNMK 115 DP 594733	ob163	310°49'00"	C		8.94 C		Class B
UNMK 115 DP 594733	UNMK 116 DP 594733	ob164	304°49'00"	C		8.61 C		Class B
UNMK 116 DP 594733	UNMK 117 DP 594733	ob165	273°01'00"	C		11.69 C		Class B
UNMK 117 DP 594733	UNMK 118 DP 594733	ob166	274°55'00"	C		10.80 C		Class B
UNMK 118 DP 594733	UNMK 119 DP 594733	ob167	270°01'00"	C		11.68 C		Class B
UNMK 119 DP 594733	UNMK 451 SO 377210	ob168	270°02'00"	C		7.99 C		Class B
UNMK 451 SO 377210	UNMK 120 DP 594733	ob70	270°09'00"	C		11.55 C		Class B
UNMK 120 DP 594733	UNMK 452 SO 377210	ob169	278°30'00"	C		3.78 C		Class B
UNMK 452 SO 377210	UNMK 121 DP 594733	ob71	277°48'00"	C		6.90 C		Class B

Mark and Vector

Survey Number DP 594733

Meridional Circuit Lindis Peak 2000

From	To	Code	Bearing	Adpt Surv	Bearing Correction	Distance	Adpt Surv	Class
UNMK 121 DP 594733	UNMK 122 DP 594733	ob170	278°12'00"	C		10.21 C		Class B
UNMK 122 DP 594733	UNMK 123 DP 594733	ob171	278°59'00"	C		4.65 C		Class B
UNMK 123 DP 594733	UNMK 124 DP 594733	ob172	283°32'00"	C		2.20 C		Class B
UNMK 124 DP 594733	UNMK 125 DP 594733	ob173	295°33'00"	C		15.93 C		Class B
UNMK 125 DP 594733	UNMK 126 DP 594733	ob174	295°04'00"	C		6.53 C		Class B
UNMK 126 DP 594733	UNMK 127 DP 594733	ob175	294°41'00"	C		9.32 C		Class B
UNMK 127 DP 594733	UNMK 453 SO 377210	ob176	291°06'00"	C		4.27 C		Class B
UNMK 453 SO 377210	UNMK 128 DP 594733	ob72	293°13'00"	C		9.91 C		Class B
UNMK 128 DP 594733	UNMK 129 DP 594733	ob177	293°35'00"	C		7.14 C		Class B
UNMK 129 DP 594733	UNMK 130 DP 594733	ob178	293°45'00"	C		6.45 C		Class B
UNMK 130 DP 594733	UNMK 131 DP 594733	ob179	293°23'00"	C		7.36 C		Class B
UNMK 131 DP 594733	UNMK 454 SO 377210	ob180	294°50'00"	C		5.44 C		Class B
UNMK 454 SO 377210	UNMK 132 DP 594733	ob73	291°23'00"	C		2.44 C		Class B
UNMK 132 DP 594733	UNMK 133 DP 594733	ob181	295°08'00"	C		2.82 C		Class B
UNMK 133 DP 594733	UNMK 134 DP 594733	ob182	293°37'00"	C		5.48 C		Class B
UNMK 134 DP 594733	UNMK 135 DP 594733	ob183	294°40'00"	C		4.98 C		Class B
UNMK 135 DP 594733	UNMK 136 DP 594733	ob184	292°46'00"	C		3.42 C		Class B
UNMK 136 DP 594733	UNMK 137 DP 594733	ob185	298°47'00"	C		3.80 C		Class B
UNMK 137 DP 594733	UNMK 138 DP 594733	ob186	298°04'00"	C		3.67 C		Class B
UNMK 138 DP 594733	UNMK 139 DP 594733	ob187	299°58'00"	C		4.30 C		Class B
UNMK 139 DP 594733	UNMK 140 DP 594733	ob188	299°21'00"	C		4.61 C		Class B
UNMK 140 DP 594733	UNMK 141 DP 594733	ob189	296°47'00"	C		3.85 C		Class B
UNMK 141 DP 594733	UNMK 142 DP 594733	ob190	296°16'00"	C		6.14 C		Class B
UNMK 142 DP 594733	UNMK 143 DP 594733	ob191	296°33'00"	C		4.61 C		Class B

Mark and Vector

Survey Number DP 594733

Meridional Circuit Lindis Peak 2000

From	To	Code	Bearing	Adpt Surv	Bearing Correction	Distance	Adpt Surv	Class
UNMK 143 DP 594733	UNMK 144 DP 594733	ob192	304°11'00"	C		1.89 C		Class B
UNMK 144 DP 594733	UNMK 145 DP 594733	ob193	302°09'00"	C		3.81 C		Class B
UNMK 145 DP 594733	UNMK 146 DP 594733	ob194	300°42'00"	C		3.98 C		Class B
UNMK 146 DP 594733	UNMK 147 DP 594733	ob195	304°04'00"	C		4.36 C		Class B
UNMK 147 DP 594733	UNMK 148 DP 594733	ob196	303°43'00"	C		3.64 C		Class B
UNMK 148 DP 594733	UNMK 149 DP 594733	ob197	312°28'00"	C		3.41 C		Class B
UNMK 149 DP 594733	UNMK 150 DP 594733	ob198	300°47'00"	C		2.51 C		Class B
UNMK 150 DP 594733	UNMK 79 DP 405266	ob199	308°03'00"	C		2.22 C		Class B
UNMK 79 DP 405266	UNMK 151 DP 594733	ob91	307°12'00"	C		4.81 C		Class B
UNMK 151 DP 594733	UNMK 152 DP 594733	ob200	308°02'00"	C		17.84 C		Class B
UNMK 152 DP 594733	UNMK 153 DP 594733	ob201	304°59'00"	C		15.21 C		Class B
UNMK 153 DP 594733	UNMK 154 DP 594733	ob202	309°55'00"	C		16.18 C		Class B
UNMK 154 DP 594733	UNMK 155 DP 594733	ob203	310°31'00"	C		14.19 C		Class B
UNMK 155 DP 594733	UNMK 156 DP 594733	ob204	315°01'00"	C		12.15 C		Class B
UNMK 156 DP 594733	Peg 133 DP 389023	ob205	309°26'00"	C		9.09 C		Class B
Peg 133 DP 389023	UNMK 157 DP 594733	ob82	309°51'00"	C		3.92 C		Class B
UNMK 157 DP 594733	UNMK 158 DP 594733	ob206	309°35'00"	C		4.22 C		Class B
UNMK 158 DP 594733	PEG 131 DP 389023	ob207	304°14'00"	C		2.50 C		Class B
PEG 131 DP 389023	UNMK 159 DP 594733	ob84	310°28'00"	C		10.14 C		Class B
UNMK 159 DP 594733	UNMK 160 DP 594733	ob208	309°11'00"	C		11.39 C		Class B
UNMK 160 DP 594733	UNMK 75 DP 405266	ob209	307°22'00"	C		5.99 C		Class B
PEG 45 SO 377210	IT IV SO 21849	ob132	166°23'00"	A SO 377210	0°00'00"	114.14 A SO 377210		
IT IV SO 21849	PEG (73) SO 377210	ob210	10°18'00"	A SO 377210	0°00'00"	64.00 A SO 377210		
PEG (73) SO 377210	PEG 8 SO 377210	ob211	157°10'30"	A SO 377210	0°00'00"	72.10 A SO 377210		Class B

Mark and Vector

Survey Number DP 594733

Meridional Circuit Lindis Peak 2000

From	To	Code	Bearing	Adpt Surv	Bearing Correction	Distance	Adpt Surv	Class
PEG 8 SO 377210	PEG 7 SO 377210	ob212	165°19'20"	A SO 377210	0°00'00"	63.95 A	SO 377210	Class B
PEG 7 SO 377210	PEG 6 SO 377210	ob213	175°35'00"	A SO 377210	0°00'00"	62.53 A	SO 377210	Class B
PEG 6 SO 377210	PEG (2) SO 1185	ob214	161°03'00"	A SO 377210	0°00'00"	48.11 A	SO 377210	Class B
PEG (2) SO 1185	PEG (1) SO 1185	ob215	269°59'10"	A SO 377210	0°00'00"	32.69 A	SO 1185	Class B
PEG (1) SO 1185	PEG (70) SO 377210	ob216	269°59'10"	A SO 377210	0°00'00"	41.28 A	SO 1185	
PEG (70) SO 377210	PEG (71) SO 377210	ob218	269°59'10"	A SO 24810	0°00'00"	25.00 A	SO 377210	
PEG (1) SO 1185	POST (1) SO 21849	ob217	350°57'00"	A SO 21849	0°00'00"	101.75 A	SO 21849	Class B
POST (1) SO 21849	PEG (73) SO 377210	ob219	353°18'00"	A SO 21849	0°00'00"	136.72 A	SO 21849	Class B
UNMK 447 SO 377210	UNMK 448 SO 377210	ob140	269°59'10"	A SO 377210	0°00'00"	437.85 A	SO 377210	Class B
POST 14 SO 377210	UNMK 462 SO 377210	ob67	324°03'20"	A SO 377210	0°00'00"	75.97 A	SO 377210	Class B
UNMK 462 SO 377210	UNMK 463 SO 377210	ob220	332°20'20"	A SO 377210	0°00'00"	100.41 A	SO 377210	Class B
UNMK 463 SO 377210	UNMK 464 SO 377210	ob221	313°55'00"	A SO 377210	0°00'00"	49.66 A	SO 377210	Class B
UNMK 464 SO 377210	UNMK 465 SO 377210	ob222	257°25'00"	A SO 377210	0°00'00"	58.60 A	SO 377210	Class B
UNMK 465 SO 377210	UNMK 452 SO 377210	ob223	231°22'00"	A SO 377210	0°00'00"	34.32 A	SO 377210	Class B
UNMK 450 SO 377210	UNMK 466 SO 377210	ob69	324°03'20"	A SO 377210	0°00'00"	7.74 A	SO 377210	Class B
UNMK 466 SO 377210	UNMK 467 SO 377210	ob224	332°20'20"	A SO 377210	0°00'00"	99.52 A	SO 377210	Class B
UNMK 467 SO 377210	UNMK 468 SO 377210	ob225	313°55'00"	A SO 377210	0°00'00"	42.67 A	SO 377210	Class B
UNMK 468 SO 377210	UNMK 469 SO 377210	ob226	257°25'00"	A SO 377210	0°00'00"	50.91 A	SO 377210	Class B
UNMK 469 SO 377210	UNMK 451 SO 377210	ob227	231°22'00"	A SO 377210	0°00'00"	20.43 A	SO 377210	Class B
Peg 133 DP 389023	PEG 132 DP 389023	ob83	18°53'00"	A DP 389023	0°00'00"	26.18 A	DP 389023	Class B
PEG 132 DP 389023	UNMK 73 DP 405266	ob228	309°38'20"	A DP 389023	0°00'00"	13.57 A	DP 405266	Class B
PEG 131 DP 389023	PEG 130 DP 389023	ob85	18°53'00"	A DP 389023	0°00'00"	15.76 A	DP 389023	Class B
PEG 130 DP 389023	UNMK 472 SO 377210	ob229	309°38'20"	A DP 389023	0°00'00"	6.72 A	DP 389023	Class B
UNMK 472 SO 377210	UNMK 1 DP 405266	ob230	308°17'00"	A SO 377210	0°00'00"	6.13 A	DP 405266	Class B

Mark and Vector

Survey Number DP 594733

Meridional Circuit Lindis Peak 2000

From	To	Code	Bearing	Adpt Surv	Bearing Correction	Distance	Adpt Surv	Class
POST 77 DP 405266	UNMK 211 DP 405266	ob89	142°17'50"	A DP 405266	0°00'00"	227.43	A DP 405266	
UNMK 211 DP 405266	UNMK 210 DP 405266	ob231	70°20'00"	A DP 405266	0°00'00"	30.00	A DP 405266	Class B
UNMK 210 DP 405266	PEG 48 DP 405266	ob233	347°35'20"	A DP 405266	0°00'00"	173.86	A DP 405266	
UNMK 211 DP 405266	UNMK 213 DP 405266	ob232	160°20'00"	A DP 405266	0°00'00"	24.33	A DP 405266	Class B
UNMK 213 DP 405266	UNMK 212 DP 405266	ob234	70°20'00"	A DP 405266	0°00'00"	30.00	A DP 405266	Class B
UNMK 212 DP 405266	UNMK 210 DP 405266	ob235	340°20'00"	A DP 405266	0°00'00"	24.33	A DP 405266	Class B
PEG 78 DP 405266	UNMK 38 DP 425677	ob81	43°37'00"	A DP 405266	0°00'00"	389.23	A DP 425677	Class B
UNMK 38 DP 425677	UNMK 33 DP 425677	ob236	43°37'00"	A DP 405266	0°00'00"	6.72	A DP 425677	Class B
UNMK 33 DP 425677	POST 77 DP 405266	ob238	43°37'00"	A DP 405266	0°00'00"	66.25	A DP 425677	Class B
UNMK 38 DP 425677	UNMK 42 DP 425677	ob237	160°20'00"	A DP 425677	0°00'00"	98.81	A DP 425677	Class B
UNMK 42 DP 425677	UNMK 43 DP 425677	ob239	70°20'00"	A DP 425677	0°00'00"	6.00	A DP 425677	Class B
UNMK 43 DP 425677	UNMK 33 DP 425677	ob240	340°20'00"	A DP 425677	0°00'00"	101.83	A DP 425677	Class B
UNMK 31 DP 425677	UNMK 30 DP 425677	ob242	128°59'00"	A DP 425677	0°00'00"	65.71	A DP 425677	Class B
UNMK 30 DP 425677	UNMK 40 DP 425677	ob245	142°38'00"	A DP 425677	0°00'00"	85.98	A DP 425677	Class B
UNMK 40 DP 425677	UNMK 41 DP 425677	ob246	160°26'00"	A DP 425677	0°00'00"	75.95	A DP 425677	Class B
UNMK 41 DP 425677	UNMK 38 DP 425677	ob247	160°20'00"	A DP 425677	0°00'00"	18.41	A DP 425677	Class B
UNMK 27 DP 425677	UNMK 44 DP 425677	ob96	196°25'00"	A DP 425677	0°00'00"	15.49	A DP 425677	Class B
UNMK 44 DP 425677	UNMK 45 DP 425677	ob97	128°59'00"	A DP 425677	0°00'00"	66.43	A DP 425677	Class B
UNMK 45 DP 425677	UNMK 49 DP 425677	ob248	142°38'00"	A DP 425677	0°00'00"	87.64	A DP 425677	Class B
UNMK 49 DP 425677	UNMK 47 DP 425677	ob249	160°26'00"	A DP 425677	0°00'00"	76.89	A DP 425677	Class B
UNMK 47 DP 425677	UNMK 33 DP 425677	ob250	160°20'00"	A DP 425677	0°00'00"	15.37	A DP 425677	Class B
UNMK 13 DP 425677	UNMK 29 DP 425677	ob104	318°49'00"	A DP 425677	0°00'00"	19.61	A DP 425677	Class B
UNMK 29 DP 425677	UNMK 28 DP 425677	ob251	321°35'20"	A DP 425677	0°00'00"	90.07	A DP 425677	Class B
UNMK 28 DP 425677	UNMK 39 DP 425677	ob252	281°45'30"	A DP 425677	0°00'00"	62.49	A DP 425677	Class B

Mark and Vector

Survey Number DP 594733

Meridional Circuit Lindis Peak 2000

From	To	Code	Bearing	Adpt Surv	Bearing Correction	Distance	Adpt Surv	Class
UNMK 39 DP 425677	UNMK DP 425677	ob253	281°45'30"	A DP 425677	0°00'00"	5.21 A	DP 425677	Class B
UNMK DP 425677	UNMK 51 DP 425677	ob255	280°18'00"	A DP 425677	0°00'00"	33.54 A	DP 425677	Class B
UNMK 51 DP 425677	UNMK 2 DP 425677	ob256	280°18'00"	A DP 425677	0°00'00"	16.66 A	DP 425677	Class B
UNMK 24 DP 425677	UNMK 20 DP 425677	ob102	318°49'00"	A DP 425677	0°00'00"	25.66 A	DP 425677	Class B
UNMK 20 DP 425677	UNMK 25 DP 425677	ob258	321°35'20"	A DP 425677	0°00'00"	92.10 A	DP 425677	Class B
UNMK 25 DP 425677	UNMK 48 DP 425677	ob259	281°45'30"	A DP 425677	0°00'00"	50.23 A	DP 425677	Class B
UNMK 48 DP 425677	UNMK 46 DP 425677	ob260	281°45'30"	A DP 425677	0°00'00"	19.71 A	DP 425677	Class B
UNMK 46 DP 425677	UNMK 50 DP 425677	ob262	280°18'00"	A DP 425677	0°00'00"	31.22 A	DP 425677	Class B
UNMK 50 DP 425677	UNMK 1 DP 425677	ob263	280°18'00"	A DP 425677	0°00'00"	8.65 A	DP 425677	Class B
PEG 64 DP 405266	PEG 63 DP 405266	ob106	61°59'00"	A DP 405266	0°00'00"	31.92 A	DP 405266	Class B
PEG 63 DP 405266	PEG 62 DP 405266	ob265	56°37'00"	A DP 405266	0°00'00"	45.24 A	DP 405266	Class B
PEG 62 DP 405266	PEG 61 DP 405266	ob266	21°10'00"	A DP 405266	0°00'00"	17.63 A	DP 405266	Class B
PEG 61 DP 405266	POST 60 DP 405266	ob267	32°05'00"	A DP 405266	0°00'00"	21.49 A	DP 405266	Class B
POST 60 DP 405266	UNMK 39 DP 425677	ob268	79°10'30"	A DP 405266	0°00'00"	21.90 A	DP 425677	Class B
UNMK 39 DP 425677	UNMK 48 DP 425677	ob254	79°10'30"	A DP 405266	0°00'00"	15.62 A	DP 425677	Class B
UNMK 48 DP 425677	PEG 59 DP 405266	ob261	79°10'30"	A DP 405266	0°00'00"	60.30 A	DP 425677	Class B
PEG 59 DP 405266	PEG 58 DP 405266	ob269	66°24'00"	A DP 405266	0°00'00"	38.43 A	DP 405266	Class B
PEG 58 DP 405266	PEG 57 DP 405266	ob270	48°06'00"	A DP 405266	0°00'00"	12.55 A	DP 405266	Class B
PEG 57 DP 405266	PEG 2 DP 405266	ob271	24°09'00"	A DP 405266	0°00'00"	12.06 A	DP 405266	Class B
POST (7) DP 309152	UNMK 80 DP 405266	ob110	61°59'00"	A DP 405266	0°00'00"	56.03 A	DP 405266	Class B
UNMK 80 DP 405266	UNMK 81 DP 405266	ob272	56°37'00"	A DP 405266	0°00'00"	40.04 A	DP 405266	Class B
UNMK 81 DP 405266	UNMK 82 DP 405266	ob273	21°10'00"	A DP 405266	0°00'00"	13.15 A	DP 405266	Class B
UNMK 82 DP 405266	UNMK 51 DP 425677	ob274	32°05'00"	A DP 405266	0°00'00"	24.06 A	DP 425677	Class B
UNMK 51 DP 425677	UNMK 50 DP 425677	ob257	32°05'00"	A DP 405266	0°00'00"	6.46 A	DP 425677	Class B

Mark and Vector

Survey Number DP 594733

Meridional Circuit Lindis Peak 2000

From	To	Code	Bearing	Adpt Surv	Bearing Correction	Distance	Adpt Surv	Class
UNMK 50 DP 425677	UNMK 83 DP 405266	ob264	32°05'00"	A DP 405266	0°00'00"	1.60 A	DP 425677	Class B
UNMK 83 DP 405266	UNMK 84 DP 405266	ob275	79°10'30"	A DP 405266	0°00'00"	104.30 A	DP 405266	Class B
UNMK 84 DP 405266	PEG 47 DP 405266	ob276	66°24'00"	A DP 405266	0°00'00"	36.16 A	DP 405266	Class B
PEG 47 DP 405266	PEG 1 DP 405266	ob277	24°09'00"	A DP 309152	0°00'00"	12.05 A	DP 309152	Class B
PEG 47 DP 405266	UNMK (11) DP 309152	ob278	299°42'00"	A DP 309152	0°00'00"	32.65 A	DP 309152	Class B

Mark Name	Mark Condition	Description
IT 1 DP 594733		dn 0.3m on top of bank
IT 2 DP 594733		dn 0.3m in centre of track
IT 3 DP 594733		Renews IT X SO 24810, dn 0.2m in paddock
IT 4 DP 594733		Renews IT C SO 377210, dn 0.2m in paddock
IT I SO 377210		dn 0.05m
IT III SO 24810		dn 0.5m in paddock
IT VI SO 21849		dn 0.2m in berm
IT VII SO 21849		dn 0.3m in berm
IT VII SO 24810		dn 0.3 in paddock
IT VIII SO 21850		dn 0.3m in berm
IT XI SO 24810		dn 0.05m

*** End of Report ***

Schedule / Memorandum

Land Registration District

Otago

Survey Number

LT 594733

Territorial Authority (the Council)

Queenstown-Lakes District

Schedule of Existing Easements

Last Edited: 09 Aug 2023 08:19:06

<u>Purpose</u>	<u>Shown</u>	<u>Burdened Land</u> (<u>Servient Tenement</u>)	<u>Creating Document Reference</u>
Right to convey and store water	BB	Lot 2	EI 5378045.4
Right of Way	I, D, J	Lot 2	EI 8512465.9

Schedule of Existing Easements in Gross

Last Edited: 09 Aug 2023 08:22:32

<u>Purpose</u>	<u>Shown</u>	<u>Burdened Land</u> (<u>Servient Tenement</u>)	<u>Creating Document Reference</u>
Right of Way	AA	Lot 2	EI 7641670.4
Right to convey electricity	C, D, E, G	Lot 2	EI 8628552.4
Right of Way	DD	Lot 3	EI 7216949.3
	EE	Lot 1	EI 7216949.3
Right to convey electricity and to operate a transformer	H	Lot 1	EI 8628552.4

Notes

Last Edited: 09 Aug 2023 08:48:59

Area Z (building platform) is subject to existing Land Covenant 8512465.11

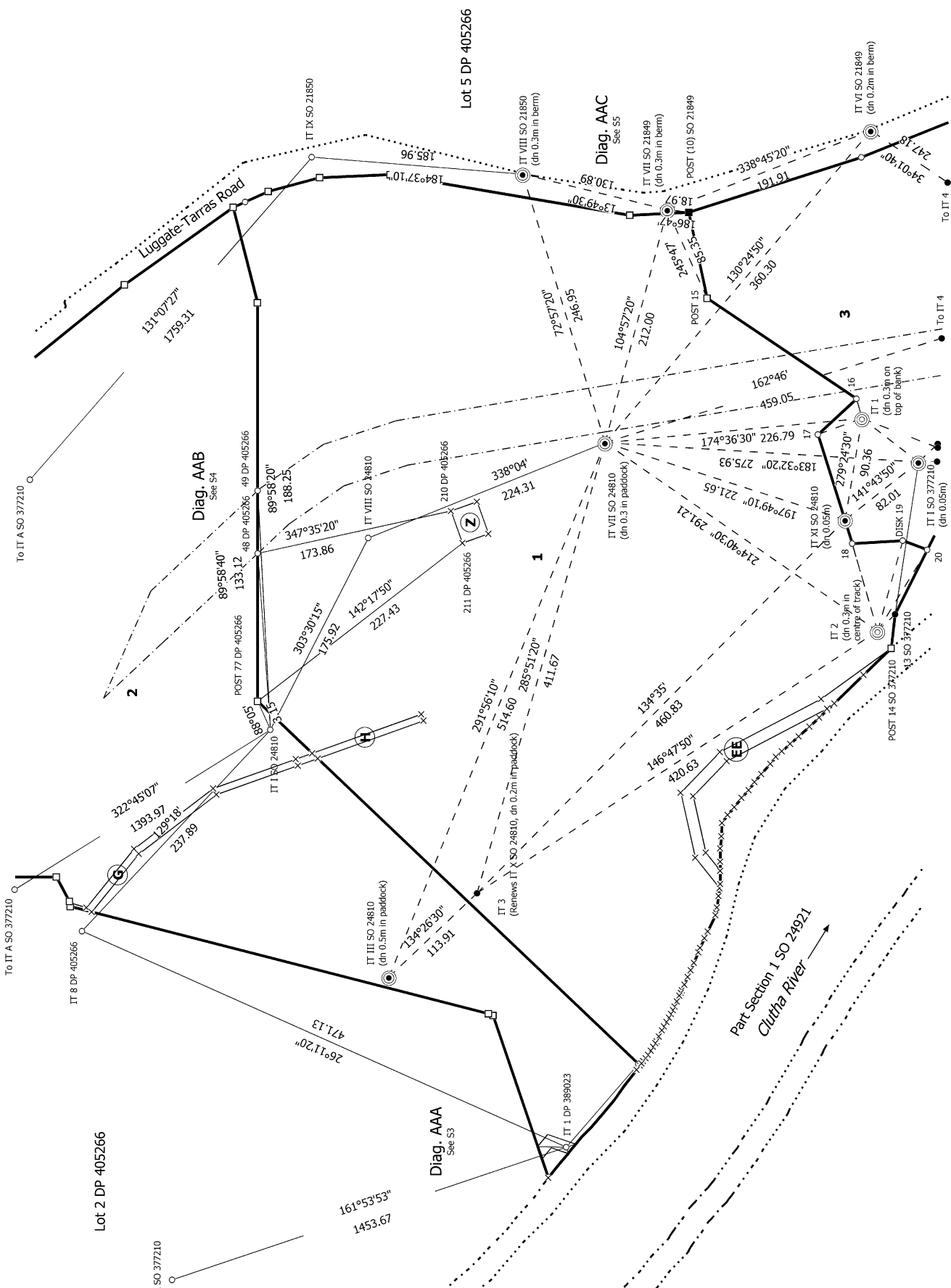
Amalgamation Conditions

Last Edited: 14 Aug 2023 08:43:09

That Lot 4 hereon be transferred to the owners of Lot 5 DP 405266 and Sections 5-9 SO 357262 (RT418320) and that one record of title be issued to include all parcels. (CSN 1852474)



Diag. AA



S 27

Land District: Otago

Digitally Generated Plan
Generated on: 23/09/2023 07:43am | Page 18 of 34

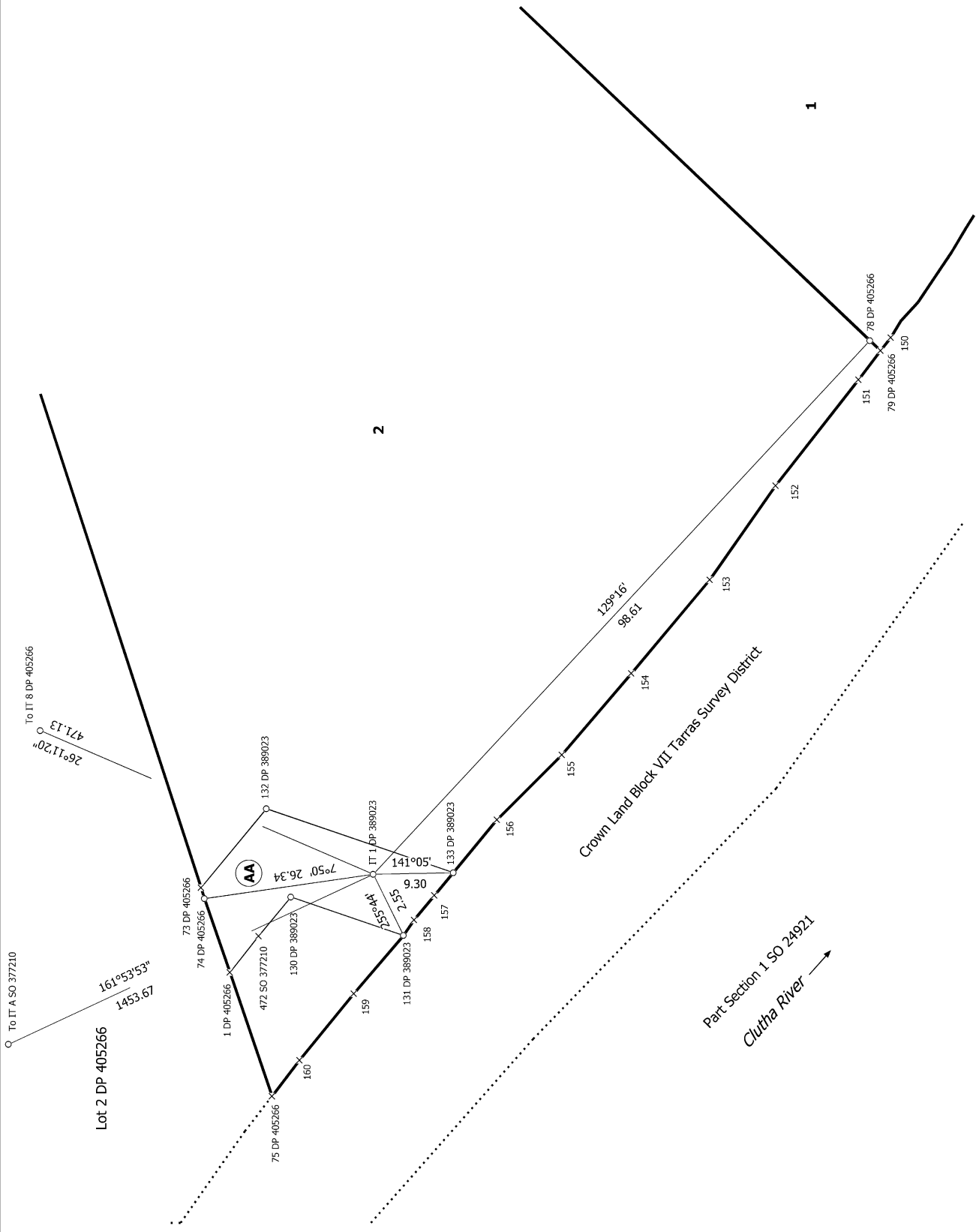
Lots 1-4 being a Subdivision of Lot 1 & 4 DP 405266 and Section 1 & Part Section 2 SO 23635

Surveyor: Stuart John Taylor
Firm: Measured Land Surveys Limited
Date of Survey: 7/08/2023

Record of Survey
LT 594733
Approved on: 23/09/2023

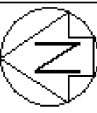


Diag. AAA

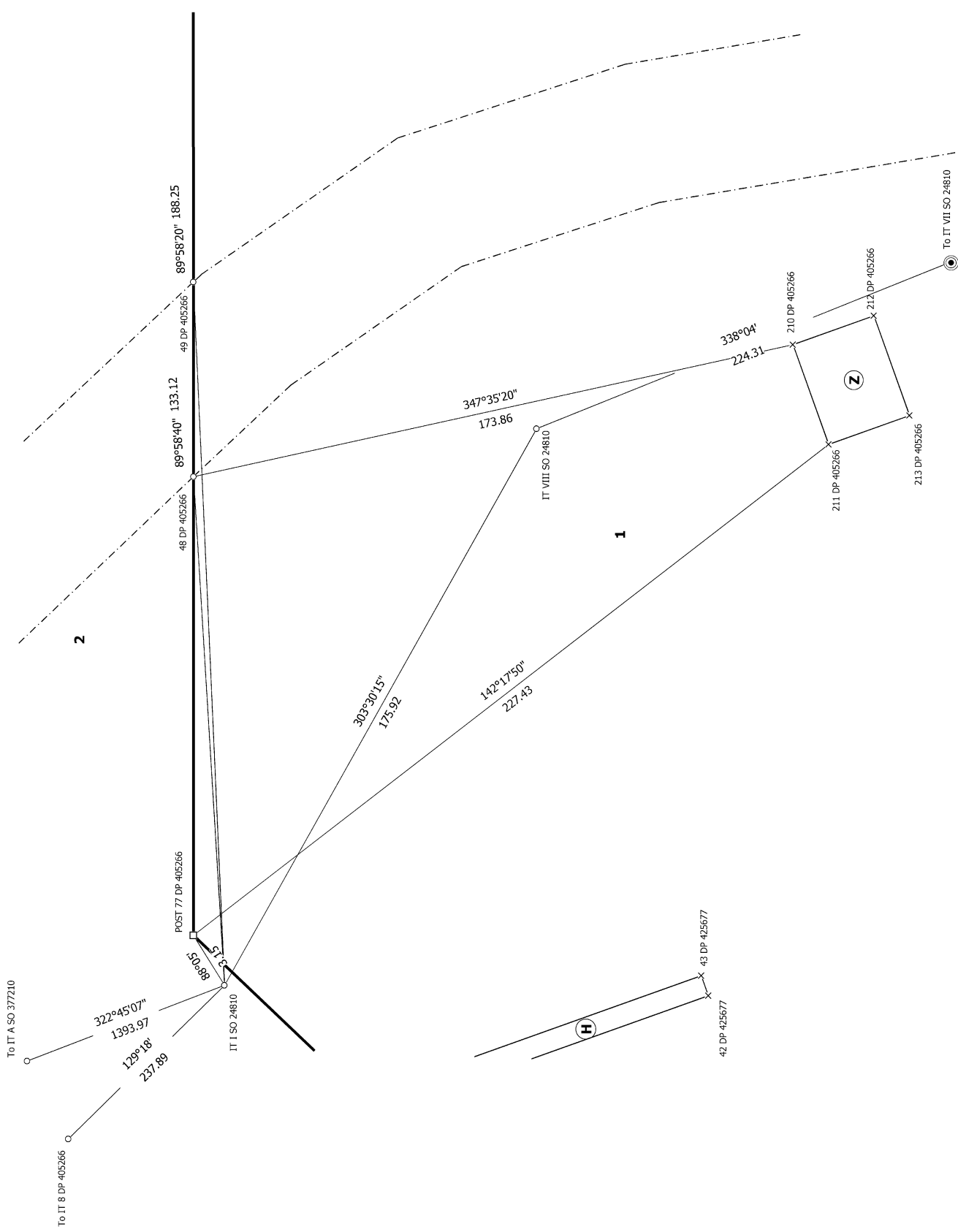


S 3/7

<p>Land District: Otago</p> <p>Digitally Generated Plan</p> <p>Generated on: 23/09/2023 07:43am Page 19 of 34</p>	<p>Lots 1-4 being a Subdivision of Lot 1 & 4 DP 405266 and Section 1 & Part Section 2 SO 23635</p>	<p>Surveyor: Stuart John Taylor Firm: Measured Land Surveys Limited Date of Survey: 7/08/2023</p>	<p>Record of Survey LT 594733 Approved on: 23/09/2023</p>
--	---	---	---



Diag. AAB



S 4/7

Land District: Otago

Digitally Generated Plan

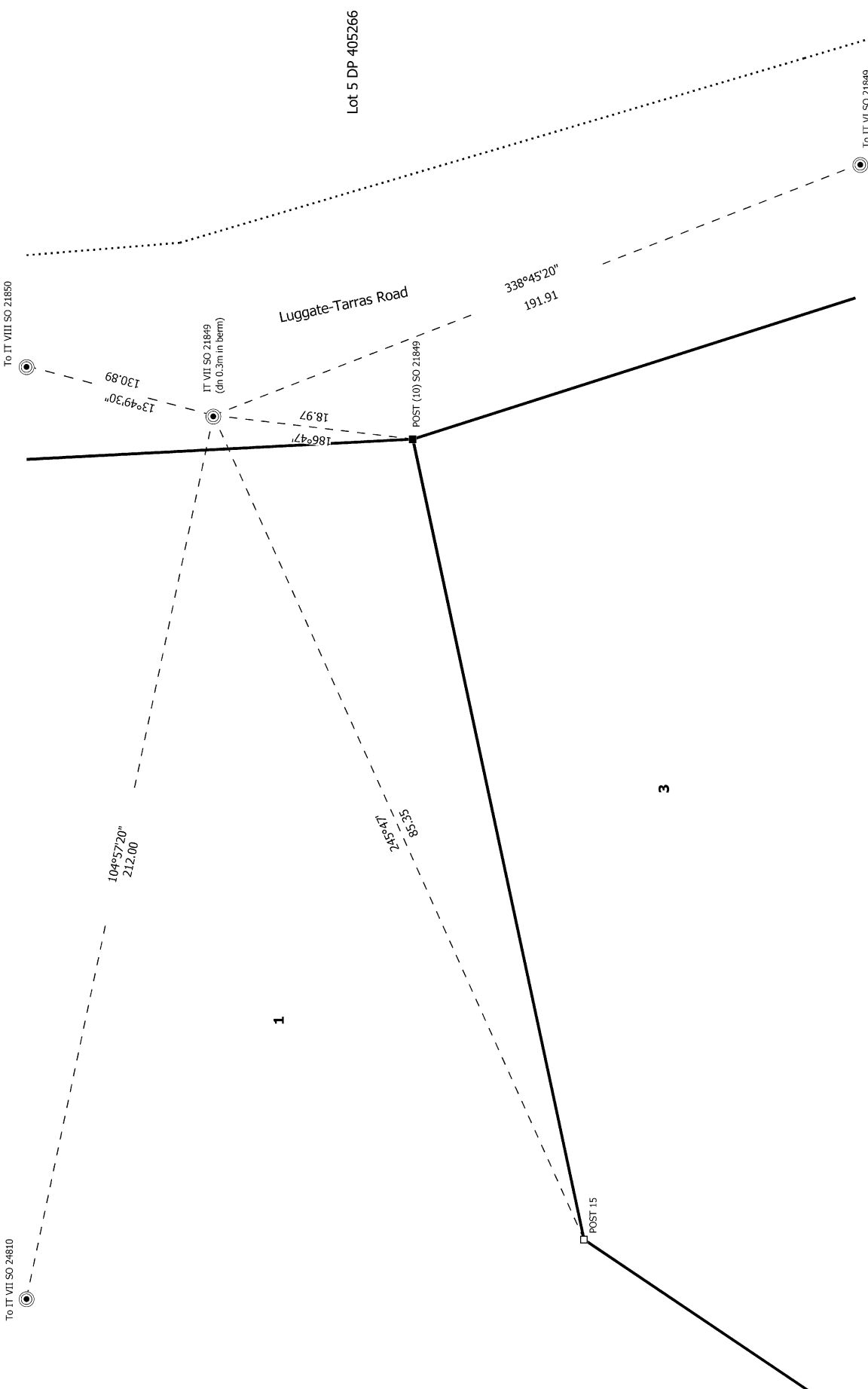
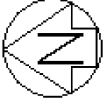
Generated on: 23/09/2023 07:43am | Page 20 of 34

Lots 1-4 being a Subdivision of Lot 1 & 4 DP 405266 and Section 1 & Part Section 2 SO 23635

Surveyor: Stuart John Taylor
Firm: Measured Land Surveys Limited
Date of Survey: 7/08/2023

Record of Survey
LT 594733
Approved on: 23/09/2023

Diag. AAC



S 5/7

Land District: Otago

Digitally Generated Plan
Generated on: 23/09/2023 07:43am | Page 21 of 34

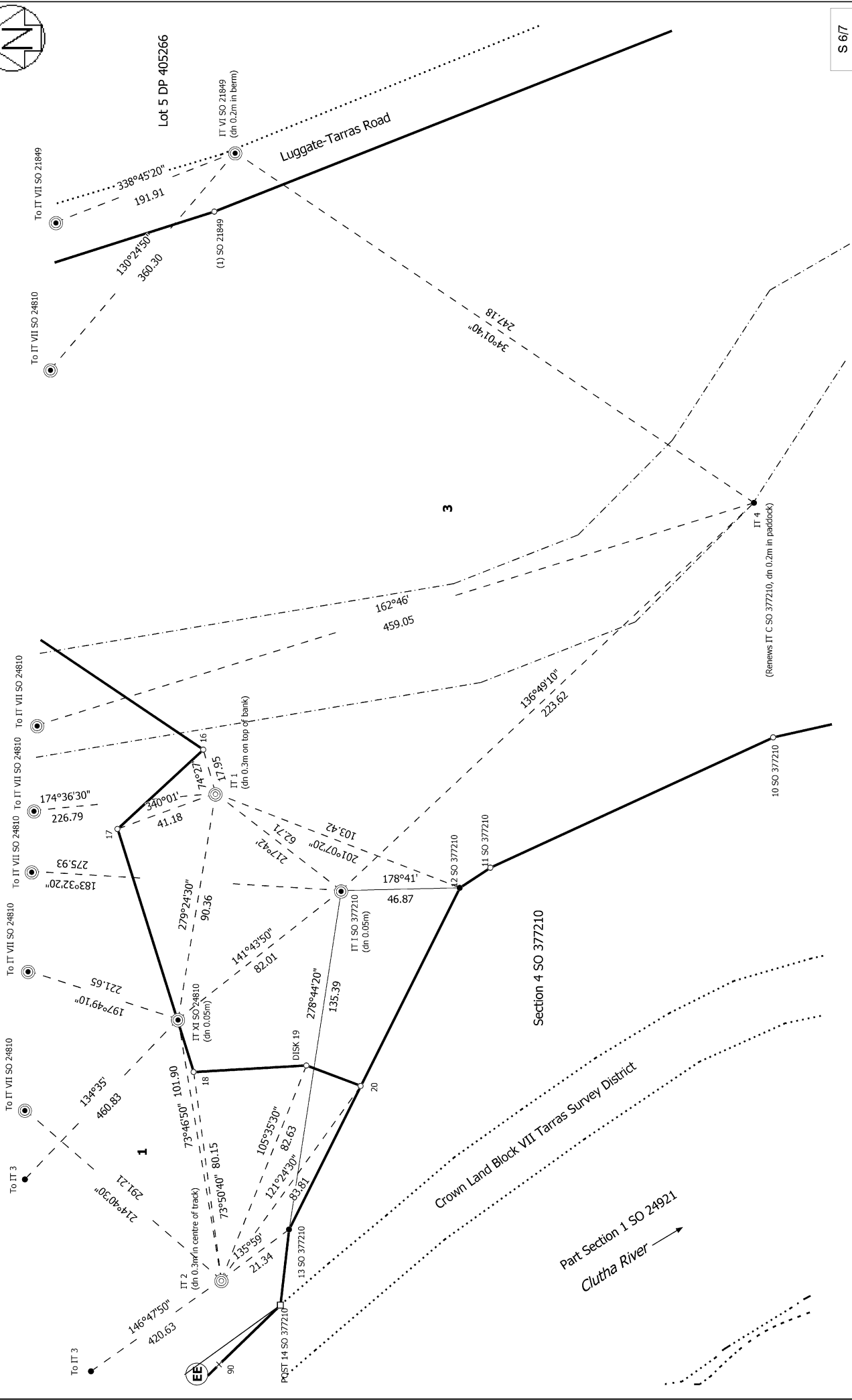
Lots 1-4 being a Subdivision of Lot 1 & 4 DP 405266 and Section 1 & Part Section 2 SO 23635

Surveyor: Stuart John Taylor
Firm: Measured Land Surveys Limited
Date of Survey: 7/08/2023

Record of Survey
LT 594733
Approved on: 23/09/2023

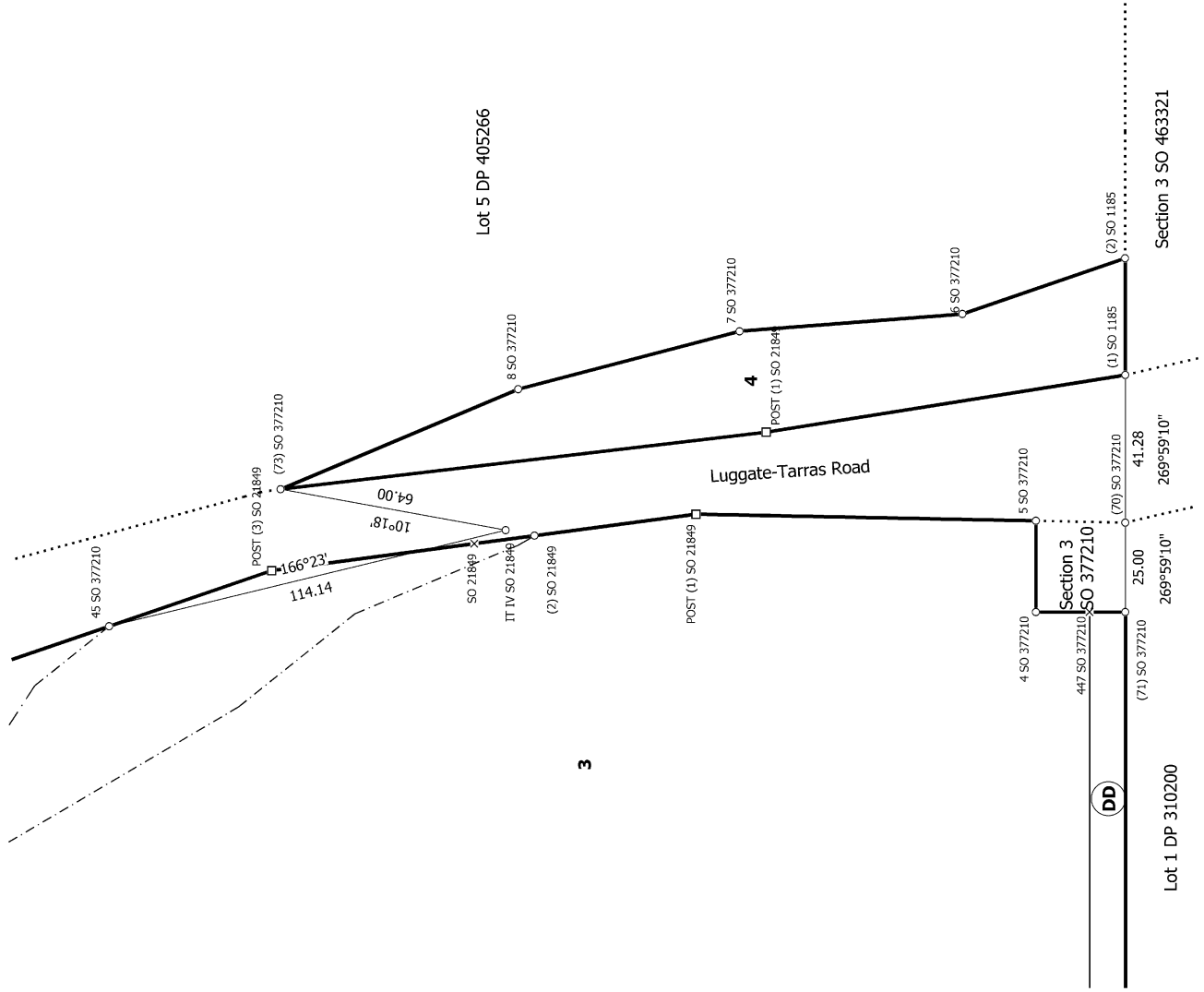


Diag. AB



S 617

<p>Land District: Otago</p> <p>Digitally Generated Plan</p> <p>Generated on: 23/09/2023 07:43am Page 22 of 34</p>	<p>Lots 1-4 being a Subdivision of Lot 1 & 4 DP 405266 and Section 1 & Part Section 2 SO 23635</p>	<p>Surveyor: Stuart John Taylor Firm: Measured Land Surveys Limited Date of Survey: 7/08/2023</p>	<p>Record of Survey LT 594733 Approved on: 23/09/2023</p>
--	---	---	---



S 7/7

Land District: Otago

Digitally Generated Plan

Generated on: 23/09/2023 07:43am | Page 23 of 34

Lots 1-4 being a Subdivision of Lot 1 & 4 DP 405266 and Section 1 & Part Section 2 SO 23635

Surveyor: Stuart John Taylor
Firm: Measured Land Surveys Limited
Date of Survey: 7/08/2023

Record of Survey
LT 594733
Approved on: 23/09/2023

Diag. A

Lot 1 DP 309152
BB C
D I
E J

Lot 6 DP 405266

Diag. AF
See T10

Lot 2 DP 405266
Crown Land Block VII Tarras Survey District

2
31.4980Ha

Lot 5 DP 405266
(RT 418320)

1
29.6224Ha

Section 6 SO 23929

Clutha River

Lot 1 DP 466676

Part Section 1 SO 24921

Section 4 SO 37210

3
23.5523Ha

4
0.5166Ha

Lot 1 DP 310200

Section 3 SO 463321

T 1/11



Subject to Part 4A Conservation Act 1987

Land District: Otago

Digitally Generated Plan

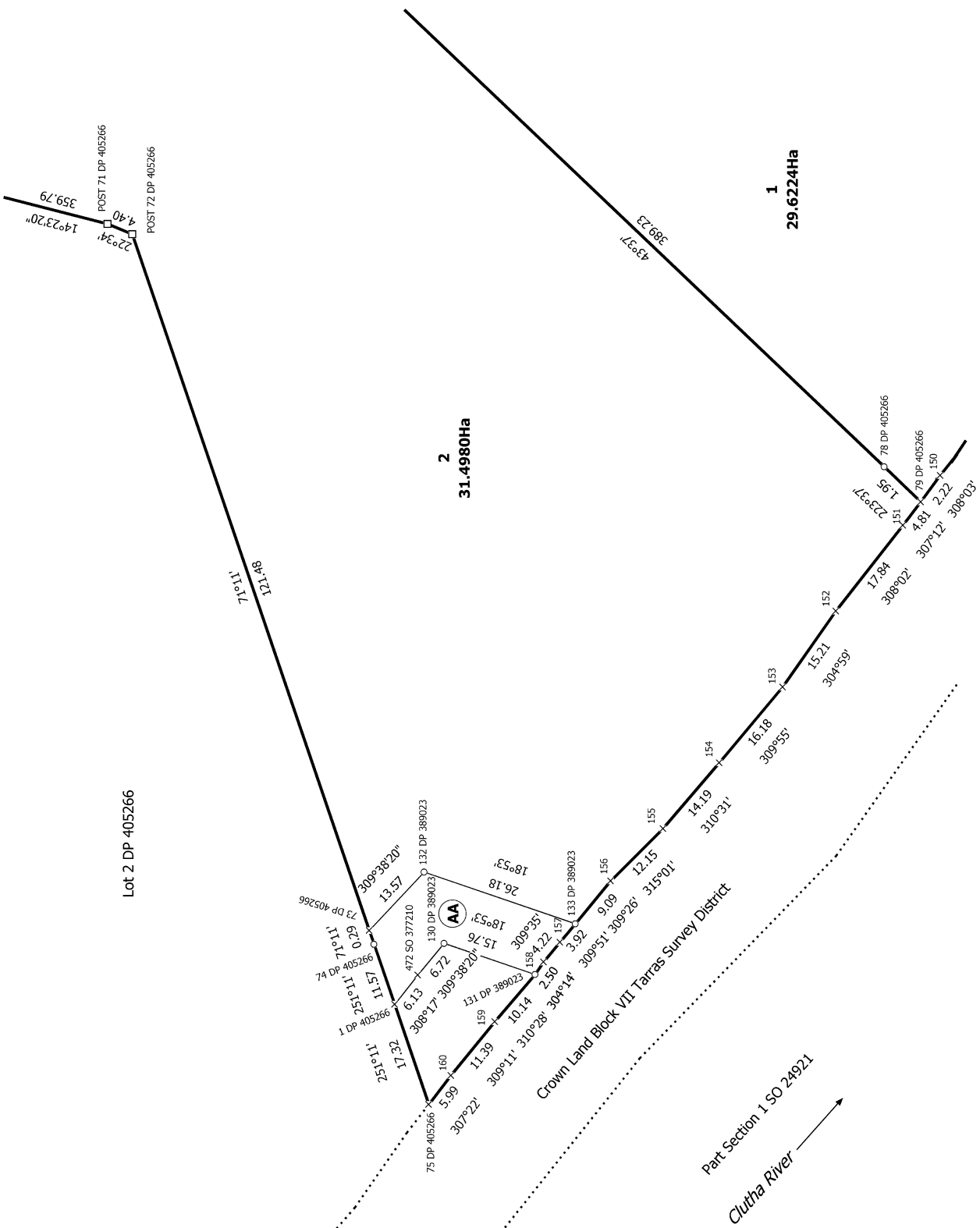
Generated on: 23/09/2023 07:43am | Page 24 of 34

Lots 1-4 being a Subdivision of Lot 1 & 4 DP 405266 and Section 1 & Part Section 2 SO 23635

Surveyor: Stuart John Taylor
Firm: Measured Land Surveys Limited
Date of Survey: 7/08/2023

Record of Survey
LT 594733
Approved on: 23/09/2023

Diag. AB



Lot 2 DP 405266

2
31.4980Ha

1
29.6224Ha

Crown Land Block VII Tairas Survey District

Part Section 1 SO 24921
Clutha River

T 3/11

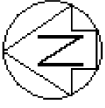
Land District: Otago

Digitally Generated Plan
Generated on: 23/09/2023 07:43am | Page 26 of 34

Lots 1-4 being a Subdivision of Lot 1 & 4 DP 405266 and Section 1 & Part Section 2 SO 23635

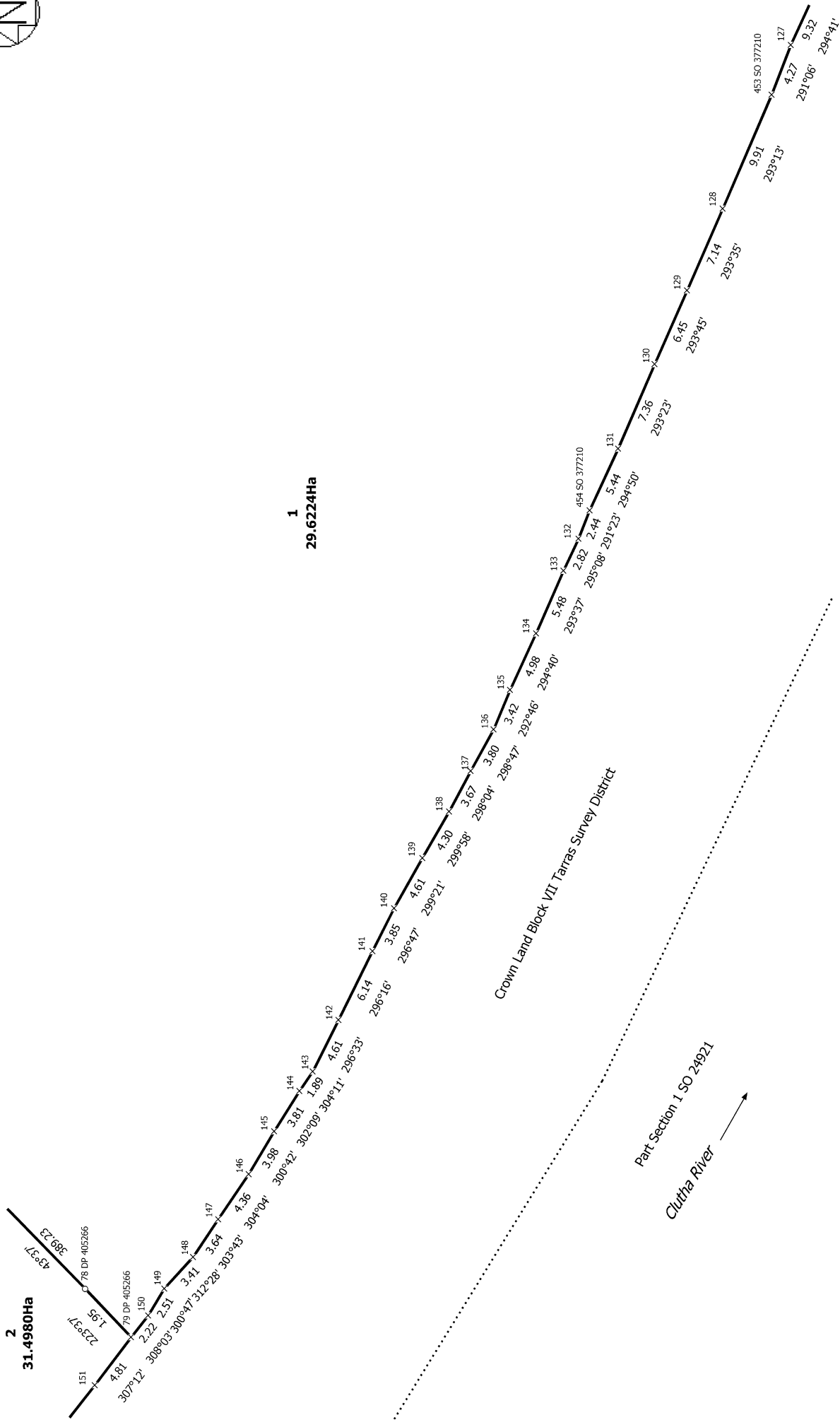
Surveyor: Stuart John Taylor
Firm: Measured Land Surveys Limited
Date of Survey: 7/08/2023

Record of Survey
LT 594733
Approved on: 23/09/2023



Diag. AC

2
31.4980Ha



1
29.6224Ha

T 4/11

Land District: Otago

Digitally Generated Plan

Generated on: 23/09/2023 07:43am | Page 27 of 34

Lots 1-4 being a Subdivision of Lot 1 & 4 DP 405266 and Section 1 & Part Section 2 SO 23635

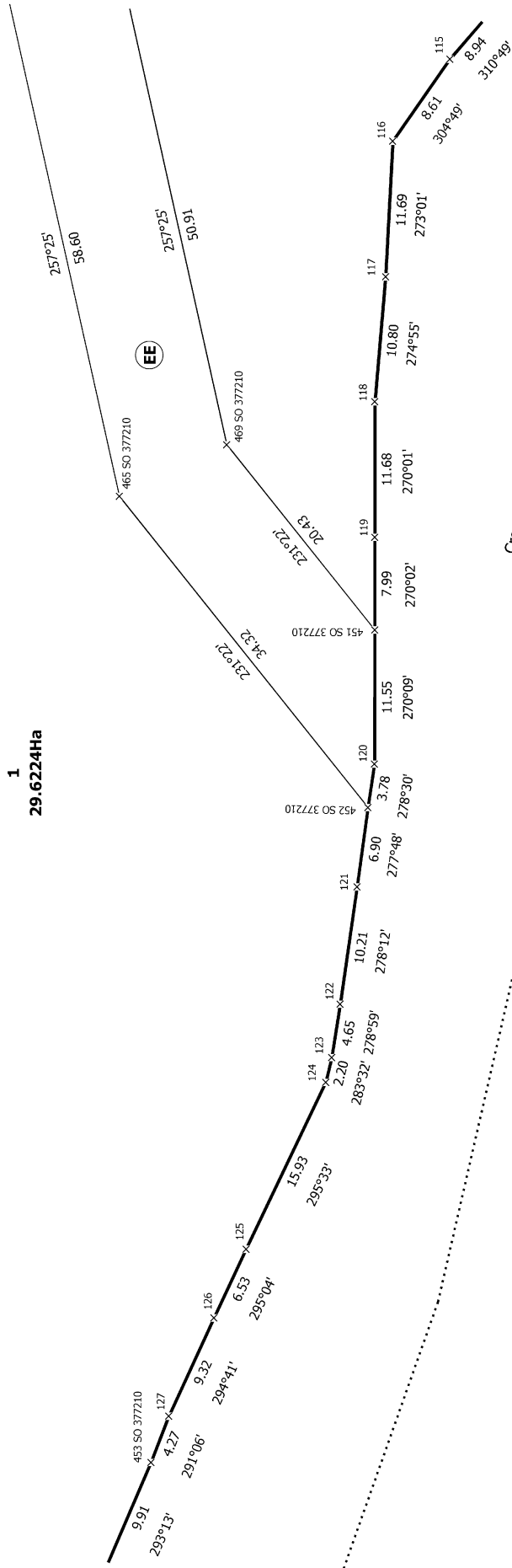
Surveyor: Stuart John Taylor
Firm: Measured Land Surveys Limited
Date of Survey: 7/08/2023

Record of Survey
LT 594733
Approved on: 23/09/2023

Diag. AD



1
29.6224Ha



Crown Land Block VII Tarras Survey District

Part Section 1 SO 24921

Clutha River

T 5/11

Land District: Otago

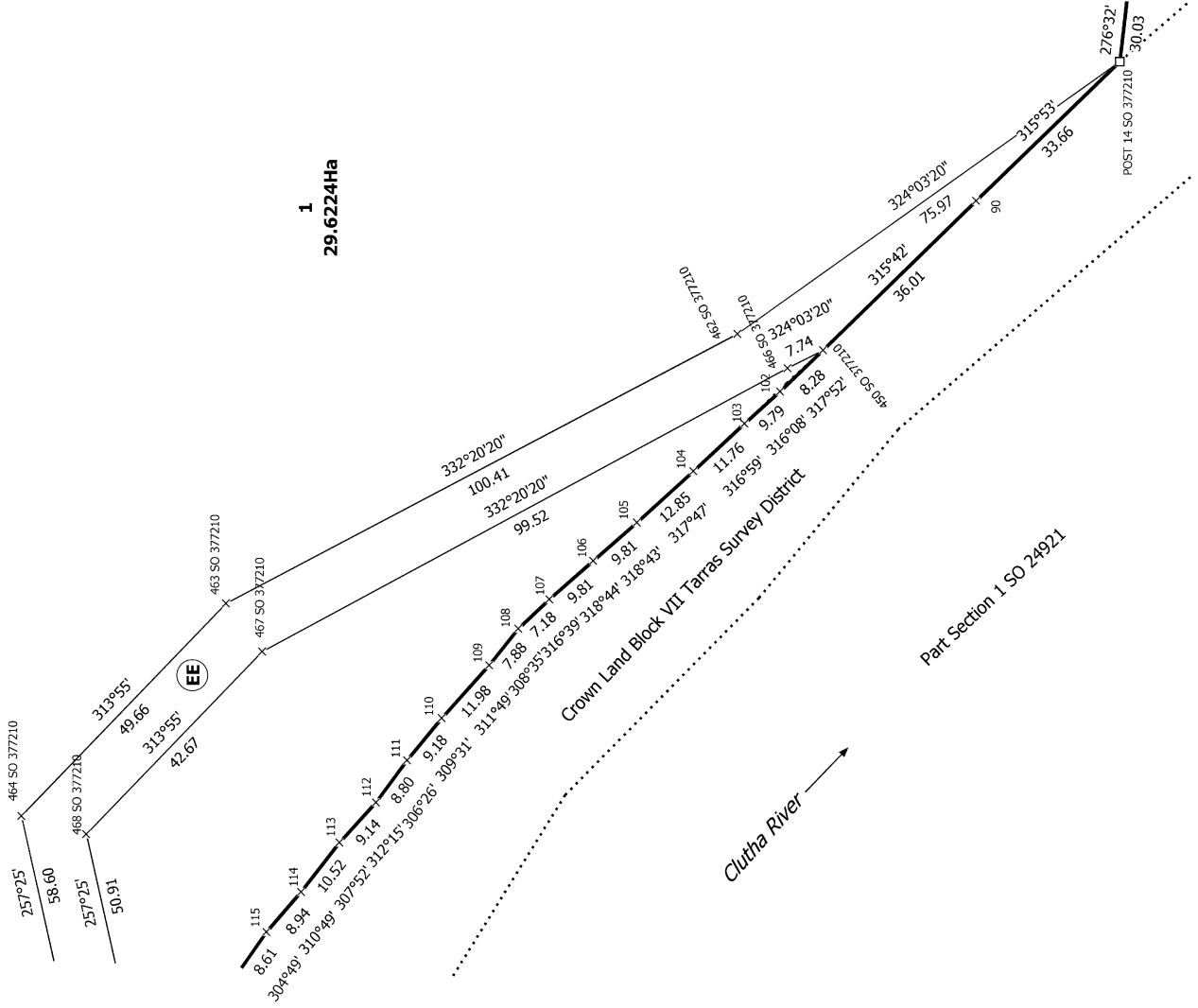
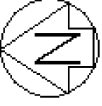
Digitally Generated Plan

Generated on: 23/09/2023 07:43am | Page 28 of 34

Lots 1-4 being a Subdivision of Lot 1 & 4 DP 405266 and Section 1 & Part
Section 2 SO 23635

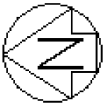
Surveyor: Stuart John Taylor
Firm: Measured Land Surveys Limited
Date of Survey: 7/08/2023

Record of Survey
LT 594733
Approved on: 23/09/2023



T 6/11

<p>Land District: Otago</p> <p>Digitally Generated Plan</p> <p>Generated on: 23/09/2023 07:43am Page 29 of 34</p>	<p>Lots 1-4 being a Subdivision of Lot 1 & 4 DP 405266 and Section 1 & Part Section 2 SO 23635</p>	<p>Surveyor: Stuart John Taylor Firm: Measured Land Surveys Limited Date of Survey: 7/08/2023</p>	<p>Record of Survey LT 594733 Approved on: 23/09/2023</p>
--	---	---	---



Lot 5 DP 405266
(RT 418320)

Luggate-Tarras Road

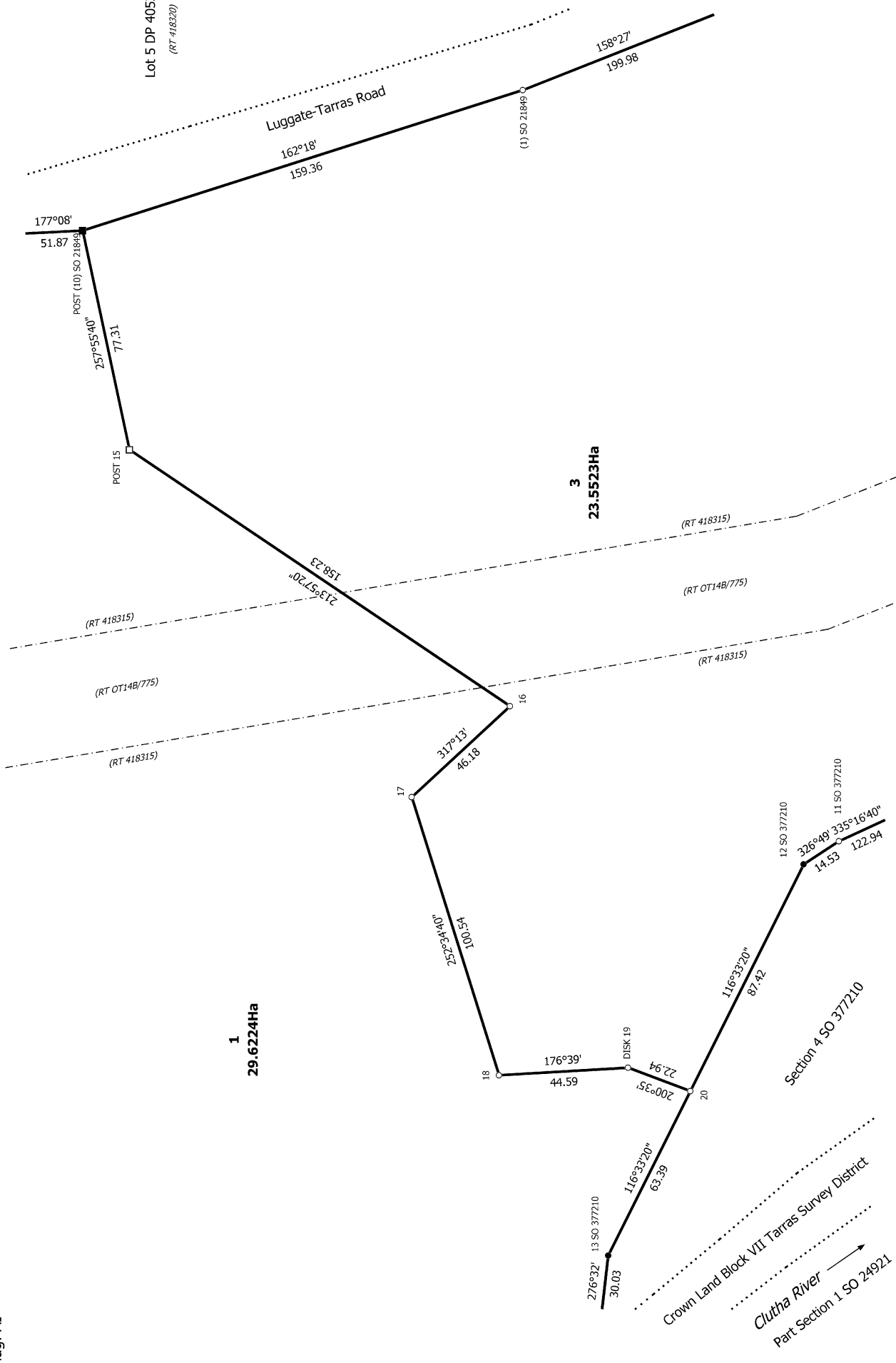
T 7/11

Record of Survey
LT 594733
Approved on: 23/09/2023

Surveyor: Stuart John Taylor
Firm: Measured Land Surveys Limited
Date of Survey: 7/08/2023

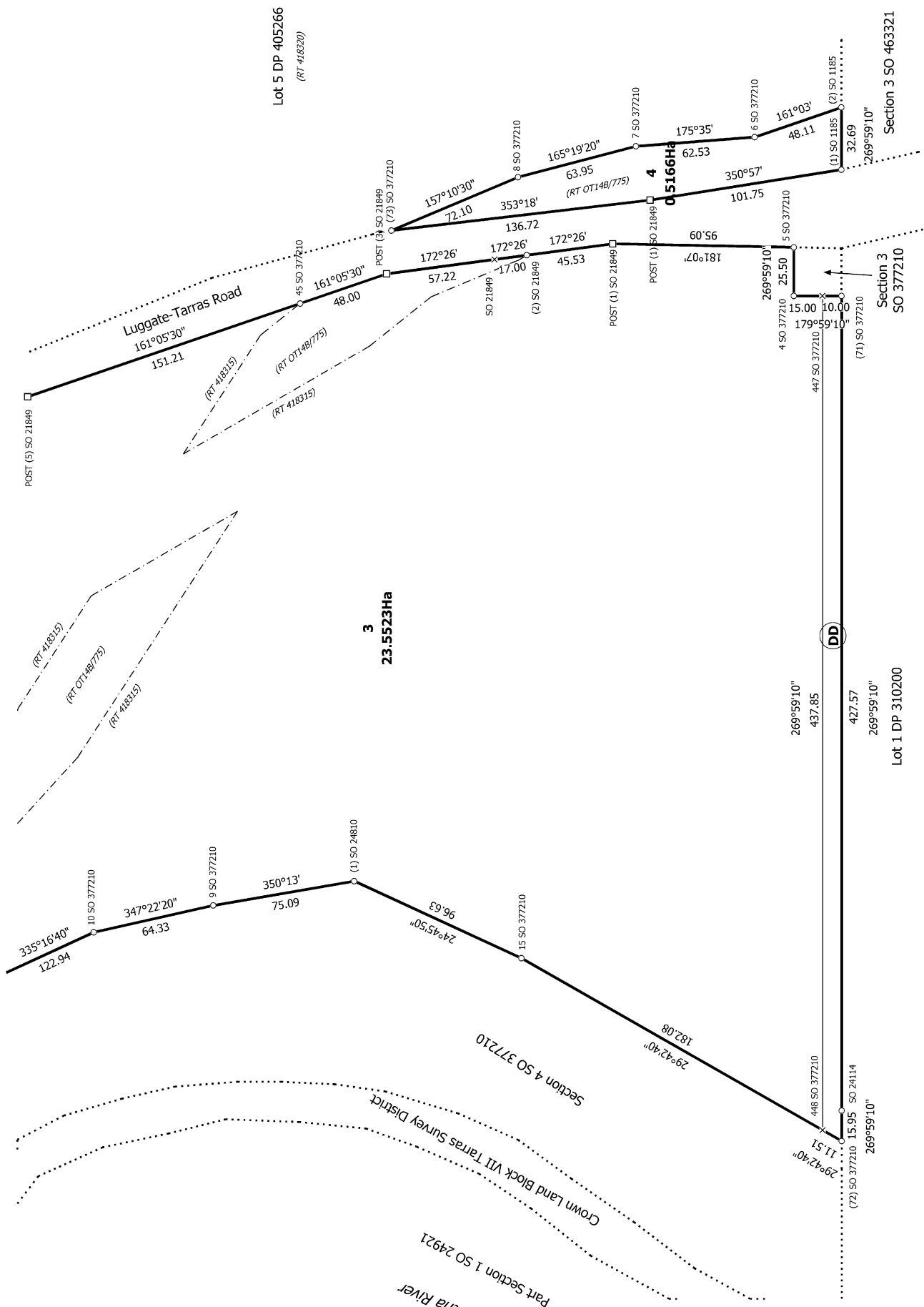
Lots 1-4 being a Subdivision of Lot 1 & 4 DP 405266 and Section 1 & Part
Section 2 SO 23635

Land District: Otago
Digitally Generated Plan
Generated on: 23/09/2023 07:43am | Page 30 of 34





Diag. A/J



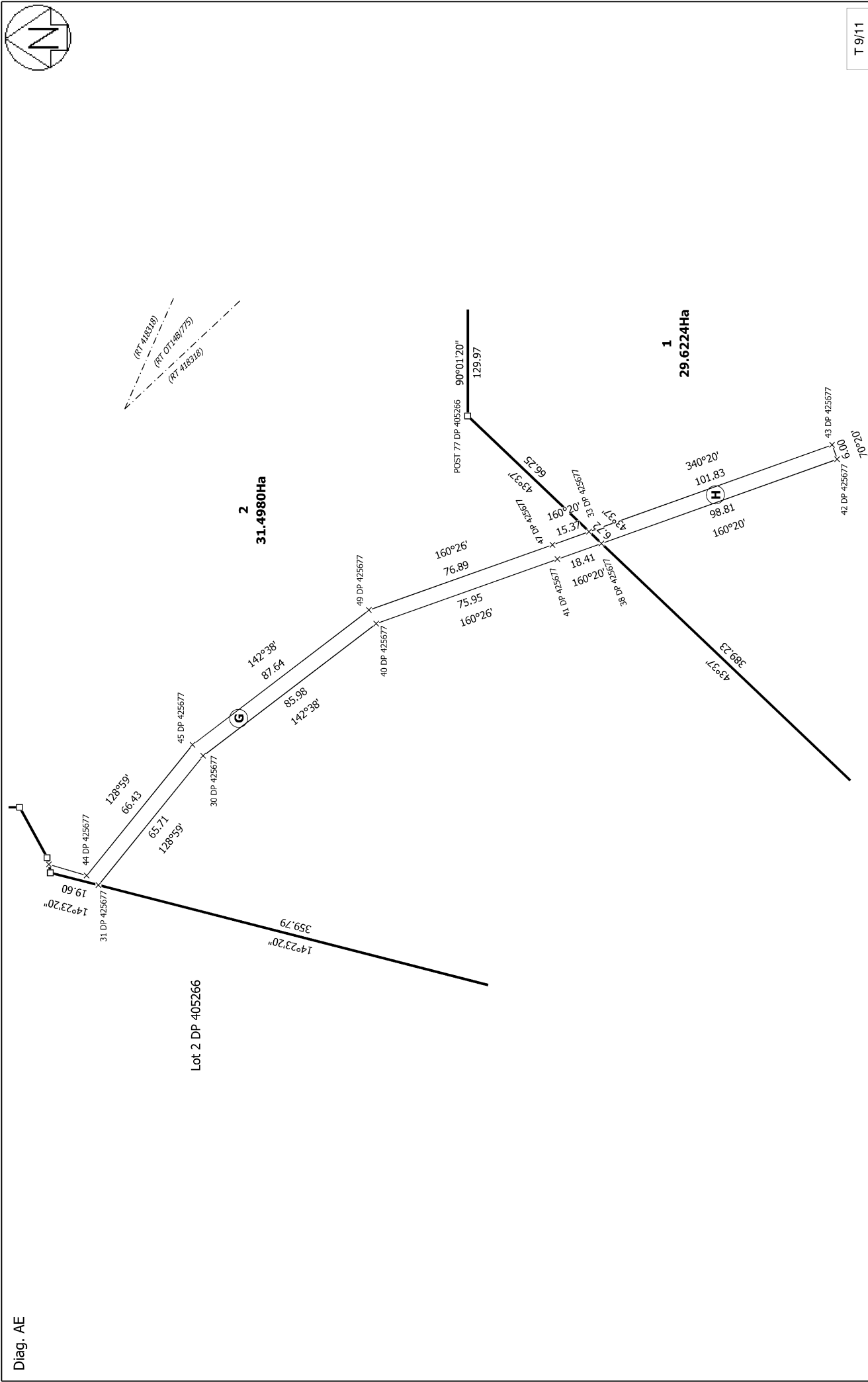
T 8/11

Land District: Otago
 Digitally Generated Plan
 Generated on: 23/09/2023 07:43am | Page 31 of 34

Lots 1-4 being a Subdivision of Lot 1 & 4 DP 405266 and Section 1 & Part Section 2 SO 23635

Surveyor: Stuart John Taylor
 Firm: Measured Land Surveys Limited
 Date of Survey: 7/08/2023

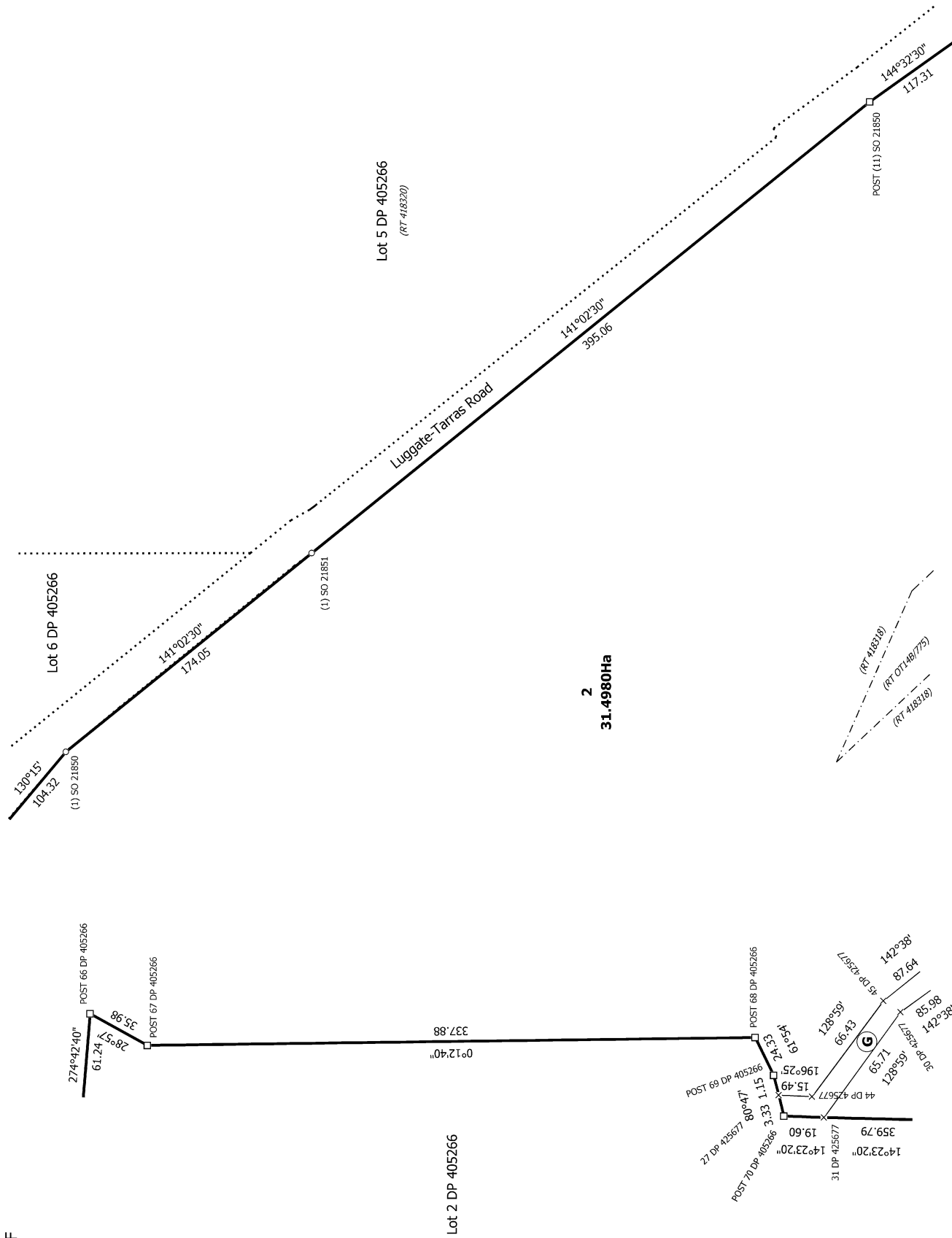
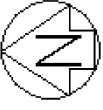
Record of Survey
 LT 594733
 Approved on: 23/09/2023



Diag. AE

T 9/11

<p>Land District: Otago</p> <p>Digitally Generated Plan</p> <p>Generated on: 23/09/2023 07:43am Page 32 of 34</p>	<p>Lots 1-4 being a Subdivision of Lot 1 & 4 DP 405266 and Section 1 & Part Section 2 SO 23635</p> <p>Surveyor: Stuart John Taylor Firm: Measured Land Surveys Limited Date of Survey: 7/08/2023</p>	<p>Record of Survey LT 594733 Approved on: 23/09/2023</p>
--	---	--

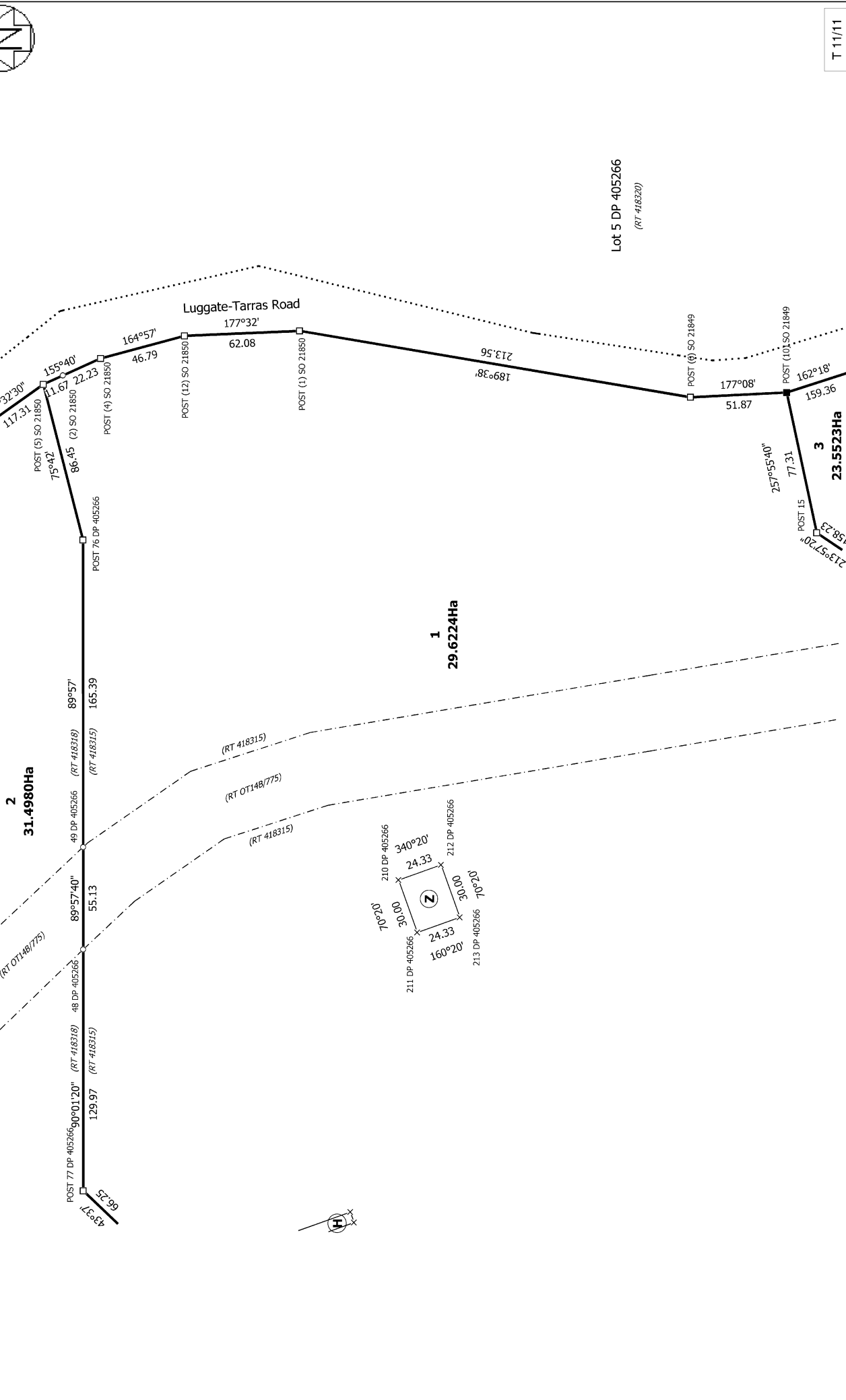
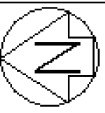


Record of Survey
 LT 594733
 Approved on: 23/09/2023

Surveyor: Stuart John Taylor
 Firm: Measured Land Surveys Limited
 Date of Survey: 7/08/2023

Lots 1-4 being a Subdivision of Lot 1 & 4 DP 405266 and Section 1 & Part
 Section 2 SO 23635

Diag. AH



T 11/11

Land District: Otago

Digitally Generated Plan
Generated on: 23/09/2023 07:43am | Page 34 of 34

Lots 1-4 being a Subdivision of Lot 1 & 4 DP 405266 and Section 1 & Part Section 2 SO 23635

Surveyor: Stuart John Taylor
Firm: Measured Land Surveys Limited
Date of Survey: 7/08/2023

Record of Survey
LT 594733
Approved on: 23/09/2023