



Record of Survey - LT 594096

Survey Number LT 594096
Surveyor Reference 8255 Stage 1 Ponsonby
Surveyor Grant John Wackrow
Survey Firm Yeomans Survey Solutions Ltd (Auckland)
Surveyor Declaration I Grant John Wackrow, being a licensed cadastral surveyor, certify that--
(a) this dataset provided by me and its related survey are accurate, correct and in accordance with the Cadastral Survey Act 2002 and Cadastral Survey Rules 2021; and
(b) the survey was undertaken by me or under my personal direction.
Declared on 19 Sep 2023 12:52 PM

Survey Details

Dataset Description Height Limited Lots 1 and 2 and Lot 4 being a subdivision of Lot 1 DP 48986, Lots 1 and 2 DP 56733 and Lot 1 DP 580798

Purpose LT Subdivision

Status Approved as to Survey **Type** Survey

Land District North Auckland **Survey Class** Class A

Meridional Circuit Mount Eden 2000 **Vertical Datum** Auckland 1946

Survey Dates

Surveyed Date 21/07/2023 **Certified Date** 19/09/2023
Submitted Date 19/09/2023 12:52:26 **Survey Approval Date** 24/10/2023
Deposit Date

Referenced Surveys

Survey Number	Land District	Bearing Correction
DP 48986	North Auckland	0°00'00"
DP 56733	North Auckland	0°00'00"
DP 58986	North Auckland	0°00'00"
SO 50677	North Auckland	0°00'00"
SO 55063	North Auckland	0°00'00"
DP 98784	North Auckland	0°00'00"
DP 580798	North Auckland	0°00'00"

Territorial Authorities

Auckland Council

Comprised In

RT 1082127
RT NA10C/402
RT NA10C/403
RT NA1991/54

Created Parcels

Parcels	Parcel Intent	Area	RT Reference
Height-Limited Lot 1 Deposited Plan 594096	Fee Simple Title	0.1217 Ha	1144751



Record of Survey - LT 594096

Created Parcels

Parcels	Parcel Intent	Area	RT Reference
Height-Limited Lot 2 Deposited Plan 594096	Fee Simple Title	0.3424 Ha	1144752
Lot 4 Deposited Plan 594096	Fee Simple Title	0.1015 Ha	1144753
Height-Limited Area A Deposited Plan 594096	Easement		
Height-Limited Area B Deposited Plan 594096	Easement		
Height-Limited Area C Deposited Plan 594096	Easement		
Height-Limited Area C Deposited Plan 594096	Easement		
Height-Limited Area E Deposited Plan 594096	Easement		
Height-Limited Area F Deposited Plan 594096	Easement		
Height-Limited Area F Deposited Plan 594096	Easement		
Area G Deposited Plan 594096	Easement		
Area H Deposited Plan 594096	Easement		
Height-Limited Area R Deposited Plan 594096	Easement		
Height-Limited Area S Deposited Plan 594096	Easement		
Height-Limited Area D Deposited Plan 594096	Easement		
Total Area		<hr/> 0.5656 Ha	

Mark and Vector

Survey Number DP 594096

Meridional Circuit Mount Eden 2000

From	To	Code	Bearing	Adpt Surv	Bearing Correction	Distance	Adpt Surv	Class
555 SO 50677	554 SO 50677	ob0	345°29'30"	A DP 580798	0°00'00"	16.20 A	DP 580798	
554 SO 50677	560 SO 50677	ob1	345°29'30"	A DP 580798	0°00'00"	43.135 A	DP 580798	
560 SO 50677	NAIL 3 DP 580798	ob2	297°59'40"	A DP 580798	0°00'00"	34.53 A	DP 580798	
NAIL 3 DP 580798	NAIL 4 DP 580798	ob4	287°44'00"	M		41.56 M		
NAIL 4 DP 580798	AP 6 DP 580798	ob5	192°10'30"	M		38.76 M		
AP 6 DP 580798	NAIL 5 DP 580798	ob11	105°48'00"	M		30.14 M		
NAIL 5 DP 580798	AP 1 DP 580798	ob24	175°06'00"	M		45.51 M		
AP 1 DP 580798	555 SO 50677	ob26	85°07'40"	M		60.46 M		
NAIL 4 DP 580798	779 SO 50677	ob6	263°31'30"	M		39.22 M		
779 SO 50677	772 SO 48163	ob31	264°10'35"	M		39.50 M		
772 SO 48163	IS IV DP 56733	ob29	173°46'20"	A DP 56733	0°00'00"	16.26 A	DP 56733	
IS IV DP 56733	IS III DP 56733	ob33	84°12'00"	A DP 56733	0°00'00"	54.93 A	DP 56733	
IS III DP 56733	IS II DP 56733	ob34	84°12'00"	A DP 56733	0°00'00"	26.26 A	DP 56733	
IS II DP 56733	IS I DP 56733	ob36	84°12'00"	A DP 56733	0°00'00"	35.37 A	DP 56733	
IS I DP 56733	IS IV DP 48986	ob38	166°06'00"	A DP 56733	0°00'00"	39.65 A	DP 56733	
IS IV DP 48986	IS III DP 48986	ob39	165°34'00"	A DP 48986	0°00'00"	26.02 A	DP 48986	
IS III DP 48986	555 SO 50677	ob40	108°23'20"	A DP 48986	0°00'00"	31.08 A	DP 48986	
779 SO 50677	IB I DP 98784	ob32	133°42'30"	A DP 98784	0°00'00"	21.47 A	DP 98784	
IB I DP 98784	IB IV DP 98784	ob41	84°34'00"	A DP 98784	0°00'00"	23.16 A	DP 98784	
IB IV DP 98784	IB V DP 98784	ob42	84°34'00"	A DP 98784	0°00'00"	41.33 A	DP 98784	
IB V DP 98784	562 SO 50677	ob43	55°20'20"	A DP 98784	0°00'00"	32.88 A	DP 98784	
562 SO 50677	453 SO 50677	ob44	192°52'00"	A SO 50677	0°00'00"	13.945 A	SO 50677	
453 SO 50677	IS 453B SO 50677	ob45	192°51'20"	A SO 50677	0°00'00"	2.895 A	SO 50677	
IS 453B SO 50677	560 SO 50677	ob46	161°27'10"	A SO 50677	0°00'00"	18.955 A	SO 50677	
560 SO 50677	NAIL 2 DP 580798	ob3	221°39'00"	A DP 580798	0°00'00"	30.35 A	DP 580798	
NAIL 2 DP 580798	NAIL 3 DP 580798	ob47	345°08'40"	A DP 580798	0°00'00"	40.24 A	DP 580798	
NAIL 4 DP 580798	NAIL 5 DP 580798	ob7	155°41'00"	A DP 580798	0°00'00"	50.59 A	DP 580798	
NAIL 4 DP 580798	NAIL 7 DP 580798	ob8	158°40'20"	A DP 580798	0°00'00"	68.47 A	DP 580798	
NAIL 7 DP 580798	AP 1 DP 580798	ob50	180°23'00"	A DP 580798	0°00'00"	27.66 A	DP 580798	
NAIL 5 DP 580798	NAIL 7 DP 580798	ob25	167°03'00"	A DP 580798	0°00'00"	18.14 A	DP 580798	
IS II DP 56733	IS VI DP 48986	ob37	154°37'00"	A DP 56733	0°00'00"	26.84 A	DP 56733	

Mark and Vector

Survey Number DP 594096

Meridional Circuit Mount Eden 2000

From	To	Code	Bearing	Adpt Surv	Bearing Correction	Distance	Adpt Surv	Class
IS VI DP 48986	IS VII DP 48986	ob51	210°32'00"	A DP 48986	0°00'00"	21.34 A	DP 48986	
IS VII DP 48986	IT VIII DP 48986	ob53	265°24'30"	A DP 48986	0°00'00"	14.76 A	DP 48986	
IT VIII DP 48986	IS I DP 48986	ob54	173°33'00"	A DP 48986	0°00'00"	22.66 A	DP 48986	
IS I DP 48986	IS II DP 48986	ob55	84°19'50"	A SO 55063	0°00'00"	30.02 A	DP 56733	
IS II DP 48986	IS III DP 48986	ob57	84°19'50"	A SO 55063	0°00'00"	32.98 A	DP 56733	
IS III DP 56733	IS VI DP 56733	ob35	172°56'00"	A DP 56733	0°00'00"	39.73 A	DP 56733	
IS VI DP 56733	IS VI DP 48986	ob58	61°25'00"	A DP 56733	0°00'00"	37.29 A	DP 56733	
IS VI DP 48986	PEG (51) DP 56733	ob52	168°53'30"	A DP 56733	0°00'00"	15.56 A	DP 56733	
PEG (51) DP 56733	ABD 36 DP 594096	ob59	173°06'20"	A DP 56733	0°00'00"	22.81 A	DP 56733	
ABD 36 DP 594096	IS II DP 48986	ob60	136°43'20"	A DP 56733	0°00'00"	1.66 A	DP 56733	
ABD 36 DP 594096	UNMK 84 DP 594096	ob61	84°06'00"	A DP 48986	0°00'00"	0.71 C		Class A
UNMK 84 DP 594096	IS DP 48986	ob127	84°06'00"	A DP 48986	0°00'00"	30.47 C		Class A
IS DP 48986	UNMK (52) DP 48986	ob62	31°13'00"	A DP 58986	0°00'00"	2.78 A	DP 58986	Class A
UNMK (52) DP 48986	BS 20 DP 580798	ob63	345°21'30"	A DP 48986	0°00'00"	21.63 A	DP 48986	Class A
BS 20 DP 580798	IS IV DP 48986	ob64	34°58'00"	A DP 48986	0°00'00"	0.90 A	DP 48986	
IS I DP 48986	UNMK (37) DP 56733	ob56	268°20'00"	A DP 56733	0°00'00"	16.06 A	DP 56733	
UNMK (37) DP 56733	ABD 44 DP 594096	ob65	353°59'40"	A DP 56733	0°00'00"	22.55 C		Class A
ABD 44 DP 594096	PEG (42) DP 56733	ob81	353°59'40"	A DP 56733	0°00'00"	4.88 C		Class A
PEG (42) DP 56733	TACK DP 56733	ob67	353°59'40"	A DP 56733	0°00'00"	3.62 A	DP 56733	Class A
TACK DP 56733	IS VI DP 56733	ob68	122°52'00"	A DP 56733	0°00'00"	11.37 A	DP 56733	
TACK DP 56733	PEG (45) DP 56733	ob69	86°10'00"	A DP 56733	0°00'00"	1.65 A	DP 56733	Class A
PEG (45) DP 56733	ABD 46 DP 594096	ob70	353°17'00"	A DP 56733	0°00'00"	30.13 A	DP 56733	Class A
ABD 46 DP 594096	IS III DP 56733	ob72	63°41'00"	A DP 56733	0°00'00"	7.29 A	DP 56733	
ABD 46 DP 594096	ABD 49 DP 594096	ob73	84°08'00"	A DP 56733	0°00'00"	3.32 C		Class A
ABD 49 DP 594096	UNMK 77 DP 594096	ob78	84°08'00"	A DP 56733	0°00'00"	1.20 C		Class A
UNMK 77 DP 594096	UNMK 79 DP 594096	ob118	84°08'00"	A DP 56733	0°00'00"	1.99 C		Class A

Mark and Vector

Survey Number DP 594096

Meridional Circuit Mount Eden 2000

From	To	Code	Bearing	Adpt Surv	Bearing Correction	Distance	Adpt Surv	Class
UNMK 79 DP 594096	UNMK 64 DP 594096	ob120	84°08'00"	A DP 56733	0°00'00"	1.37 C		Class A
UNMK 64 DP 594096	UNMK 68 DP 594096	ob102	84°08'00"	A DP 56733	0°00'00"	5.95 C		Class A
UNMK 68 DP 594096	ABD 51 DP 594096	ob104	84°08'00"	A DP 56733	0°00'00"	4.82 C		Class A
ABD 51 DP 594096	UNMK 60 DP 594096	ob79	84°08'00"	A DP 56733	0°00'00"	0.58 C		Class A
UNMK 60 DP 594096	PEG (47) DP 56733	ob96	84°08'00"	A DP 56733	0°00'00"	9.68 C		Class A
PEG (47) DP 56733	BS 21 DP 580798	ob74	84°39'50"	A DP 56733	0°00'00"	10.79 A	DP 56733	Class A
BS 21 DP 580798	ABD 27 DP 580798	ob75	84°39'50"	A DP 56733	0°00'00"	27.98 A	DP 56733	Class A
ABD 27 DP 580798	NAIL 3 DP 580798	ob76	11°25'00"	A DP 580798	0°00'00"	3.12 A	DP 580798	
ABD 27 DP 580798	BS 20 DP 580798	ob77	165°21'30"	A DP 56733	0°00'00"	37.54 A	DP 56733	Class A
UNMK (37) DP 56733	UNMK 82 DP 594096	ob66	84°06'00"	A DP 56733	0°00'00"	44.63 C		Class A
UNMK 82 DP 594096	ABD 36 DP 594096	ob126	84°06'00"	A DP 56733	0°00'00"	0.40 C		Class A
NAIL 2 DP 580798	555 SO 50677	ob48	134°46'30"	A DP 580798	0°00'00"	49.36 A	DP 580798	
NAIL 2 DP 580798	BS 20 DP 580798	ob49	251°00'00"	A DP 580798	0°00'00"	1.53 A	DP 580798	
NAIL 4 DP 580798	BS 21 DP 580798	ob9	148°46'00"	A DP 580798	0°00'00"	21.43 A	DP 580798	
ABD 51 DP 594096	UNMK 52 DP 594096	ob80	174°06'00"	C		4.42 C		Class A
UNMK 52 DP 594096	UNMK 53 DP 594096	ob83	84°06'00"	C		0.18 C		Class A
UNMK 53 DP 594096	UNMK 54 DP 594096	ob84	174°06'00"	C		1.42 C		Class A
UNMK 54 DP 594096	UNMK 55 DP 594096	ob85	84°06'00"	C		17.50 C		Class A
UNMK 55 DP 594096	UNMK 71 DP 594096	ob86	174°06'00"	C		25.50 C		Class A
UNMK 71 DP 594096	UNMK 56 DP 594096	ob110	174°06'00"	C		6.70 C		Class A
UNMK 56 DP 594096	UNMK 70 DP 594096	ob87	264°06'00"	C		22.50 C		Class A
UNMK 70 DP 594096	UNMK 69 DP 594096	ob108	264°06'00"	C		7.31 C		Class A
UNMK 69 DP 594096	UNMK 57 DP 594096	ob106	264°06'00"	C		5.19 C		Class A
UNMK 57 DP 594096	UNMK 58 DP 594096	ob88	354°06'00"	C		32.41 C		Class A

Mark and Vector

Survey Number DP 594096

Meridional Circuit Mount Eden 2000

From	To	Code	Bearing	Adpt Surv	Bearing Correction	Distance	Adpt Surv	Class
UNMK 58 DP 594096	UNMK 59 DP 594096	ob90	84°06'00"	C		2.00 C		Class A
UNMK 59 DP 594096	UNMK 81 DP 594096	ob91	354°06'00"	C		0.19 C		Class A
UNMK 81 DP 594096	ABD 49 DP 594096	ob123	354°06'00"	C		5.45 C		Class A
ABD 44 DP 594096	UNMK 63 DP 594096	ob82	84°06'00"	C		1.75 C		Class A
UNMK 63 DP 594096	UNMK 72 DP 594096	ob95	84°06'00"	C		5.98 C		Class A
UNMK 72 DP 594096	UNMK 73 DP 594096	ob111	84°06'00"	C		7.31 C		Class A
UNMK 73 DP 594096	UNMK 62 DP 594096	ob112	84°06'00"	C		22.90 C		Class A
UNMK 62 DP 594096	UNMK 85 DP 594096	ob94	84°06'00"	C		6.72 C		Class A
UNMK 85 DP 594096	ABD 61 DP 594096	ob128	84°06'00"	C		0.40 C		Class A
ABD 61 DP 594096	ABD 36 DP 594096	ob92	174°06'00"	C		22.53 C		Class A
PEG (45) DP 56733	UNMK 86 DP 594096	ob71	173°17'00"	C		7.94 C		Class A
UNMK 86 DP 594096	UNMK 63 DP 594096	ob131	173°17'00"	C		0.51 C		Class A
UNMK 60 DP 594096	UNMK 65 DP 594096	ob97	174°06'00"	C		5.44 C		Class A
UNMK 65 DP 594096	UNMK 66 DP 594096	ob98	84°06'00"	C		17.50 C		Class A
UNMK 66 DP 594096	UNMK 67 DP 594096	ob99	174°06'00"	C		32.60 C		Class A
UNMK 67 DP 594096	UNMK 62 DP 594096	ob100	174°06'00"	C		0.51 C		Class A
UNMK 67 DP 594096	UNMK 56 DP 594096	ob101	264°06'00"	C		0.40 C		Class A
UNMK 64 DP 594096	UNMK 75 DP 594096	ob103	174°06'00"	C		4.43 C		Class A
UNMK 75 DP 594096	UNMK 76 DP 594096	ob113	264°06'00"	C		1.37 C		Class A
UNMK 76 DP 594096	UNMK 80 DP 594096	ob114	174°06'00"	C		1.02 C		Class A
UNMK 80 DP 594096	UNMK 69 DP 594096	ob122	174°06'00"	C		32.60 C		Class A
UNMK 69 DP 594096	UNMK 72 DP 594096	ob107	174°06'00"	C		0.51 C		Class A
UNMK 68 DP 594096	UNMK 74 DP 594096	ob105	174°06'00"	C		30.35 C		Class A
UNMK 74 DP 594096	UNMK 70 DP 594096	ob115	174°06'00"	C		7.70 C		Class A

Mark and Vector

Survey Number DP 594096

Meridional Circuit Mount Eden 2000

From	To	Code	Bearing	Adpt Surv	Bearing Correction	Distance	Adpt Surv	Class
UNMK 70 DP 594096	UNMK 73 DP 594096	ob109	174°06'00"	C		0.51 C		Class A
UNMK 74 DP 594096	UNMK 78 DP 594096	ob116	110°40'00"	C		2.24 C		Class A
UNMK 78 DP 594096	UNMK 71 DP 594096	ob117	84°06'00"	C		20.50 C		Class A
UNMK 77 DP 594096	UNMK 83 DP 594096	ob119	174°06'00"	C		4.43 C		Class A
UNMK 83 DP 594096	UNMK 76 DP 594096	ob125	84°06'00"	C		1.99 C		Class A
UNMK 79 DP 594096	UNMK 76 DP 594096	ob121	174°06'00"	C		4.43 C		Class A
UNMK 81 DP 594096	UNMK 80 DP 594096	ob124	84°06'00"	C		3.19 C		Class A
UNMK 85 DP 594096	UNMK 82 DP 594096	ob129	174°06'00"	C		22.53 C		Class A
ABD 61 DP 594096	UNMK 87 DP 594096	ob93	84°06'00"	C		0.71 C		Class A
UNMK 87 DP 594096	UNMK 84 DP 594096	ob130	174°06'00"	C		22.53 C		Class A
UNMK 57 DP 594096	UNMK 86 DP 594096	ob89	264°06'00"	C		0.79 C		Class A
AP 6 DP 580798	ABD 49 DP 594096	ob12	313°18'00"	M		23.25 M		
AP 6 DP 580798	ABD 51 DP 594096	ob13	354°33'40"	M		17.59 M		
AP 6 DP 580798	UNMK 59 DP 594096	ob14	302°18'20"	C		19.33 C		
AP 6 DP 580798	UNMK 58 DP 594096	ob15	298°55'20"	C		20.94 C		
AP 6 DP 580798	UNMK 57 DP 594096	ob16	214°08'20"	C		26.71 C		
AP 6 DP 580798	UNMK 56 DP 594096	ob17	133°02'20"	C		27.12 C		
AP 6 DP 580798	UNMK 55 DP 594096	ob18	50°42'20"	C		21.34 C		
AP 6 DP 580798	UNMK 54 DP 594096	ob19	355°40'00"	C		11.75 C		
AP 6 DP 580798	UNMK 53 DP 594096	ob20	355°30'00"	C		13.17 C		
AP 6 DP 580798	UNMK 52 DP 594096	ob21	354°43'00"	C		13.17 C		
AP 1 DP 580798	ABD 36 DP 594096	ob27	346°00'40"	M		13.28 M		
AP 1 DP 580798	UNMK (37) DP 56733	ob28	279°45'00"	C		48.70 C		
NAIL 5 DP 580798	ABD 44 DP 594096	ob22	252°28'20"	M		48.73 M		

Mark and Vector

Survey Number DP 594096

Meridional Circuit Mount Eden 2000

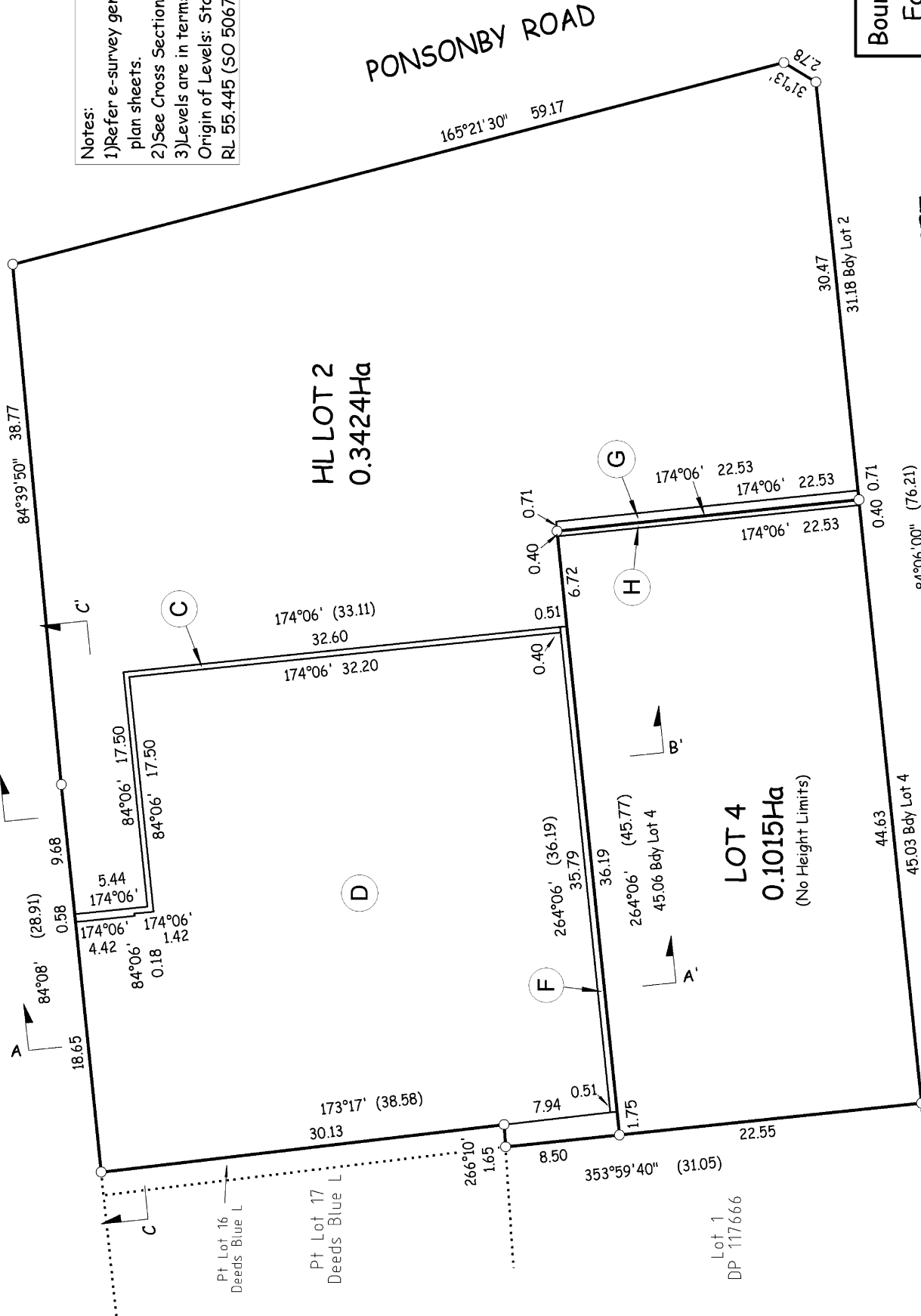
From	To	Code	Bearing	Adpt Surv	Bearing Correction	Distance	Adpt Surv	Class
NAIL 5 DP 580798	ABD 61 DP 594096	ob23	189°17'00" M			10.18 M		
779 SO 50677	ABD 46 DP 594096	ob30	149°22'00" M			20.76 M		
AP 6 DP 580798	779 SO 50677	ob10	317°23'00" M			45.48 M		

Mark Name	Mark Condition	Description
453 SO 50677		N/A
554 SO 50677		N/A
555 SO 50677		N/A
560 SO 50677		N/A
562 SO 50677		N/A
772 SO 48163		N/A
779 SO 50677		This mark was deemed unreliable (disturbed) on SO 50677.
ABD 44 DP 594096		Disk in top of conc ret. wall
AP 1 DP 580798		AP in conc fpath
AP 6 DP 580798		AP in conc island
IS 453B SO 50677		N/A
IS I DP 48986		Gone.
NAIL 2 DP 580798		Nail in seal fpath
NAIL 3 DP 580798		Nail in seal fpath
NAIL 4 DP 580798		Nail in seal fpath
NAIL 5 DP 580798		Nail in seal carpark
NAIL 7 DP 580798		Nail in seal carpark
UNMK (37) DP 56733		Bdy Corner 0.03m North of SW Corner of top cap of metal Post

*** End of Report ***



POMPALLIER TERRACE





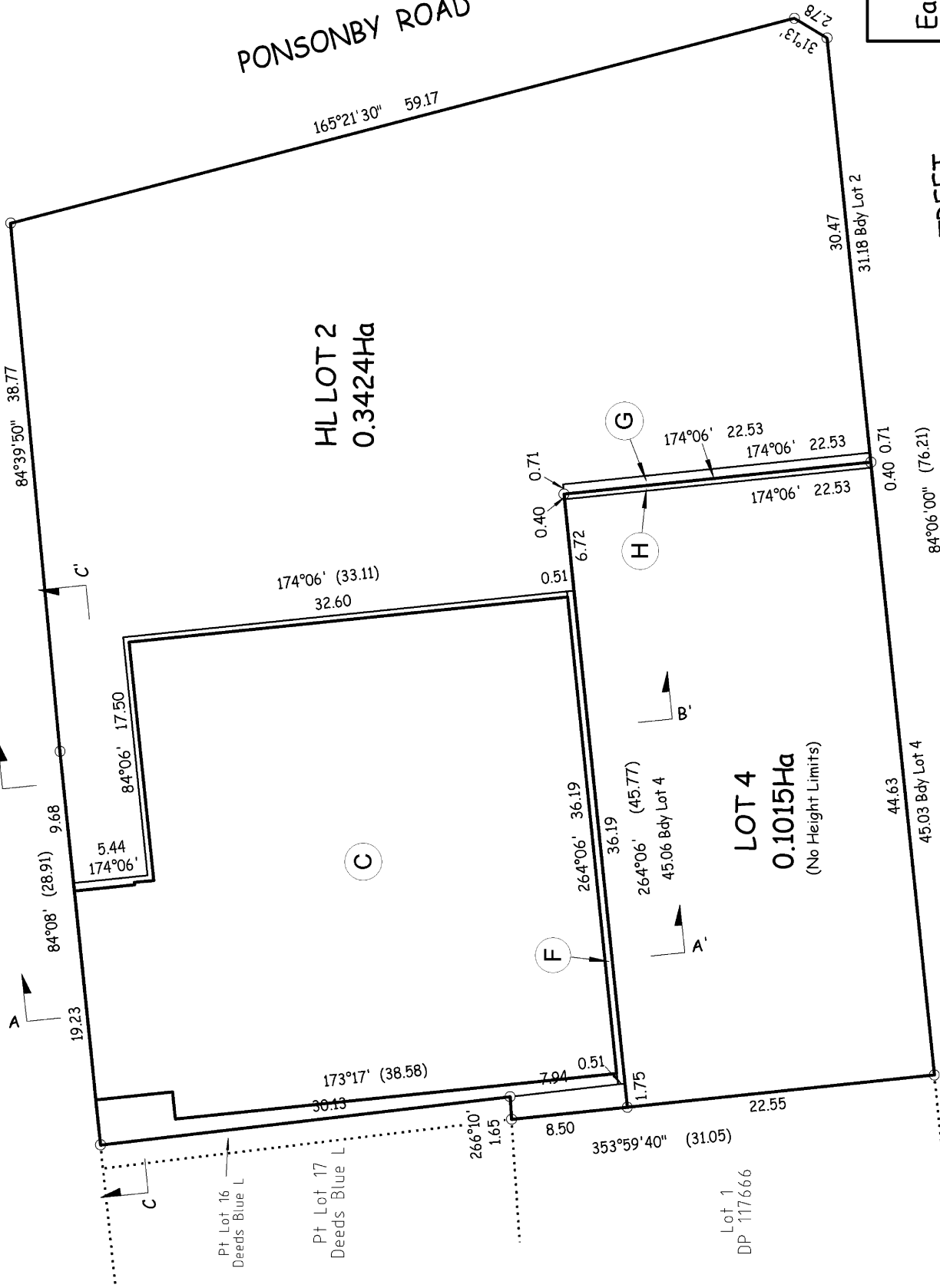
POMPALLIER TERRACE

PONSONBY ROAD

COWAN STREET

HL LOT 2
0.3424Ha

LOT 4
0.1015Ha
(No Height Limits)

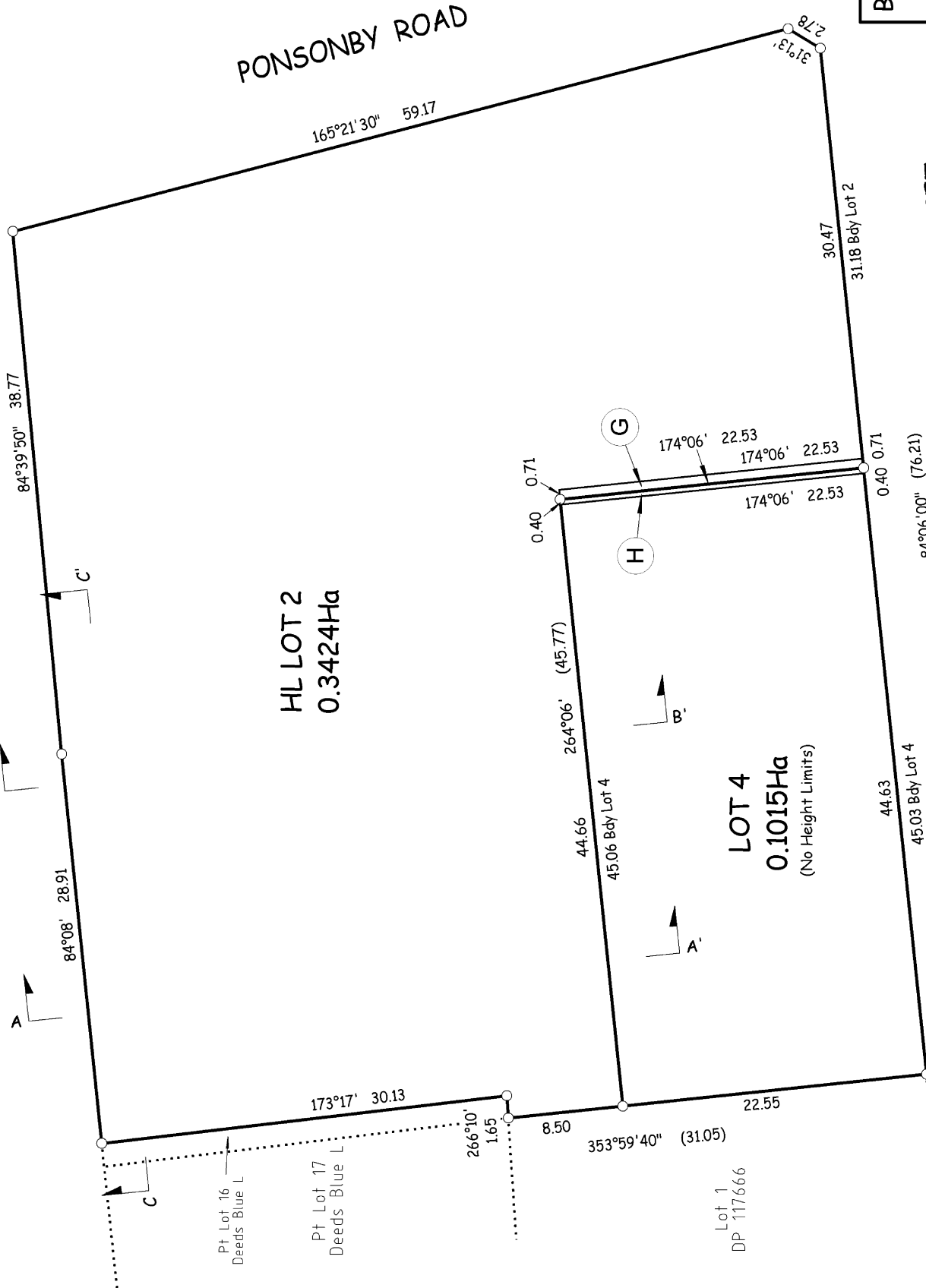


Boundaries, Allotments and
Easement Areas shown between
RL 55.15m and RL 55.45m

<p>Land District: North Auckland Firm: Yeomans Survey Solutions Limited Surveyor: Grant John Wackrow</p>		<p>HEIGHT LIMITED LOTS 1 AND 2 AND LOT 4 BEING A SUBDIVISION OF LOT 1 DP 48986, LOTS 1 AND 2 DP 56733 AND LOT 1 DP 580798</p>	<p>Territorial Authority: Auckland Council File: 8255-Stage 1 LT</p>	<p>Supporting Document Title Plan Graphic Sheet 2 of 5 DP 594096</p>
--	--	---	--	--



POMPALLIER TERRACE



HL LOT 2
0.3424Ha

LOT 4
0.1015Ha
(No Height Limits)

Boundaries, Allotments and
Easement Areas shown
above RL 55.45m

<p>Land District: North Auckland Firm: Yeomans Survey Solutions Limited Surveyor: Grant John Wackrow</p>		<p>HEIGHT LIMITED LOTS 1 AND 2 AND LOT 4 BEING A SUBDIVISION OF LOT 1 DP 48986, LOTS 1 AND 2 DP 56733 AND LOT 1 DP 580798</p>	<p>Territorial Authority: Auckland Council File: 8255-Stage 1 LT</p>	<p>Supporting Document Title Plan Graphic Sheet 3 of 5 DP 594096</p>
--	--	---	--	--

POMPALLIER
TERRACE

Indicative
Ground Level

HL LOT 2

HL LOT 1

HL LOT 2

LOT 4

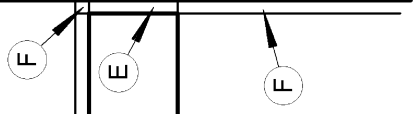
RL 55.45

RL 55.15

RL 51.85

Level 1

Level B01



CROSS SECTION A - A'

Note:
HL LOT 1 Upper Limit RL 55.15
Lower Limit RL 51.85
HL LOT 2 No Upper and Lower Limits
except in relation to HL LOT 1
LOT 4 No Height Limits

POMPALLIER
TERRACE

Indicative
Ground Level

HL LOT 2

(C)

HL LOT 1

(B)

HL LOT 2

(D)

(F)

LOT 4

RL 55.45

Level 1

RL 55.15

RL 51.85

Level B01

CROSS SECTION B - B'

HL LOT 2

(C)

(R)

(S)

(A)

HL LOT 1

(D)

HL LOT 2

(C)

RL 55.45

Level 1

RL 55.15

RL 51.85

Level B01

Pt Lot 16
Deeds Blue L

Indicative
Ground Level

CROSS SECTION C - C'

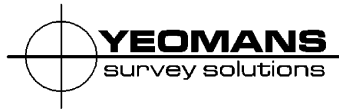
Land District: North Auckland
Firm: Yeomans Survey Solutions Limited
Surveyor: Grant John Wackrow



HEIGHT LIMITED LOTS 1 AND 2 AND LOT 4 BEING A
SUBDIVISION OF LOT 1 DP 48986, LOTS 1 AND 2 DP 56733
AND LOT 1 DP 580798

Territorial Authority: Auckland Council
File: 8255-Stage 1 LT

Supporting Document Title
Plan Graphic Sheet 5 of 5
DP 594096



DP 594096

Our Ref: 8255 Stage 1 Ponsonby Road

Land Registration District: North Auckland

Territorial Authority: Auckland Council

Notes:

Areas and Allotments shown with a prefix of "HL-" are Height-Limited.

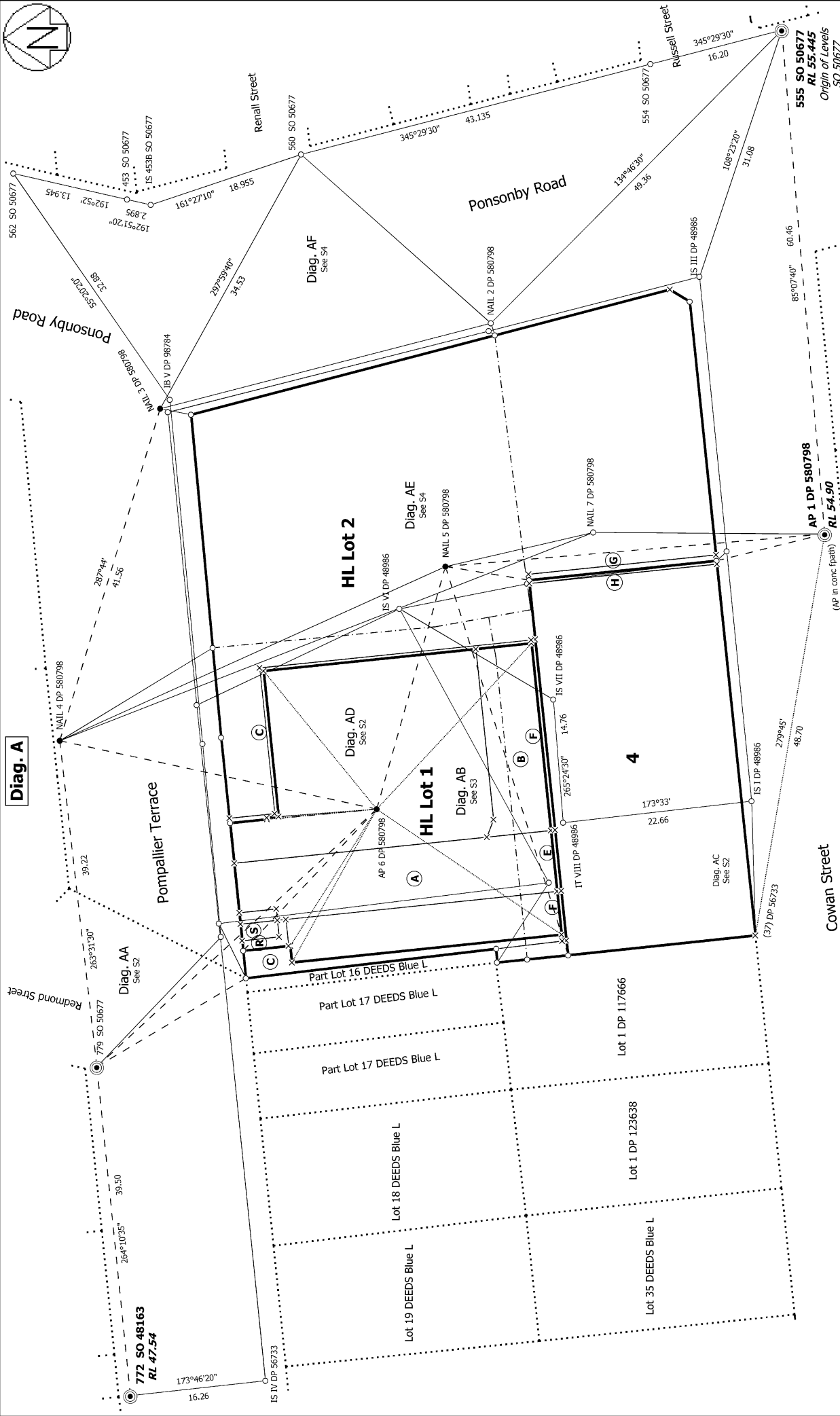
All heights are on Auckland Vertical Datum 1946. "RL" denotes "Reduced Level"

Memorandum of Easements					
Purpose	Shown	Servient Tenement (Burdened Land)	Dominant Tenement (Benefited Land)	Upper Limit (RL)	Lower Limit (RL)
Right of Way	HL-A & HL-B	HL-Lot 1	HL-Lot 2 & Lot 4	55.15	51.85
Right of Way	HL-E	HL-Lot 2	HL-Lot 1 & Lot 4	55.15	51.85
Right of Way (Pedestrian)	HL-R	HL-Lot 1	HL-Lot 2 & Lot 4	55.15	51.85
Right to Convey Water, Electricity, Telecommunications and Gas. Right to Drain Water and Sewage	HL-Lot 1	HL-Lot 1	HL-Lot 2 & Lot 4	55.15	51.85
	HL-E	HL-Lot 2	HL-Lot 1 & Lot 4	55.15	51.85
	HL-C & HL-F	HL-Lot 2	HL-Lot 1 & Lot 4	55.45	-
	HL-D	HL-Lot 2	HL-Lot 1 & Lot 4	51.85	-
	G	HL-Lot 2	Lot 4	-	-
Right of Support and Maintenance	HL-Lot 1	HL-Lot 1	HL-Lot 2 & Lot 4	55.15	51.85
	HL-E	HL-Lot 2	HL-Lot 1 & Lot 4	55.15	51.85
	HL-C & HL-F	HL-Lot 2	HL-Lot 1 & Lot 4	55.45	-
	HL-D	HL-Lot 2	HL-Lot 1 & Lot 4	51.85	-
	G	HL-Lot 2	Lot 4	-	-
	H	Lot 4	HL-Lot 2	-	-
Ventilation and Fire Safety	HL-Lot 1	HL-Lot 1	HL-Lot 2 & Lot 4	55.15	51.85
Fire Systems	HL-S	HL-Lot 1	HL-Lot 2 & Lot 4	55.15	51.85

R:\#Jobs\8255-URBAN COLLECTIVE-PONSONBY ROAD-PONSONBY\Data & Traverse Diagram\LT 594096 Stage 1\Easement Schedule Strata Scheme 2023-09-11.doc



Schedule of Existing Easements to be Surrendered			
Purpose	Shown	Servient Tenement (Burdened Land)	Created By
Right of Way	Shown Blue on DP 56733	Lot 1 DP 56733	Conveyance 325593 (R.416/596)
Right of Way	Shown Blue on DP 56733	Lot 1 DP 56733	EC A221519
Right of Way	A on DP 98784	Lot 1 DP 56733	Transfer B236987.2



Diag. A

S 1/4

Levels are in terms of Auckland Vertical Datum 1946, VCM CIOV 555 SO 50677, RL 55.445

<p>Land District: North Auckland</p> <p>Digitally Generated Plan</p> <p>Generated on: 24/10/2023 1:23pm Page 17 of 24</p>	<p>Height Limited Lots 1 and 2 and Lot 4 being a subdivision of Lot 1 DP 48986, Lots 1 and 2 DP 56733 and Lot 1 DP 580798</p> <p>Surveyor: Grant John Wackrow Firm: Yeomans Survey Solutions Ltd (Auct Date of Survey: 21/07/2023</p>	<p>Record of Survey LT 594096 Approved on: 24/10/2023</p>
--	--	---



Lot 1 DP 122208

Diag. AA

(Diagram distorted to facilitate drafting)

Part Allot 21 Sec 8 SBRS OF Auckland

Redmond Street

Pompallier Terrace

Lot 129 DP 2262

Lot 1 DP 197500

Lot 19 DEEDS Blue L

Lot 18 DEEDS Blue L

Lot 17 DEEDS Blue L

Part Lot 17 DEEDS Blue L

Part Lot 16 DEEDS Blue L

Part Lot 17 DEEDS Blue L

Part Lot 17 DEEDS Blue L

Part Lot 17 DEEDS Blue L

Part Lot 17 DEEDS Blue L

Part Lot 17 DEEDS Blue L

Part Lot 17 DEEDS Blue L

Part Lot 17 DEEDS Blue L

Part Lot 17 DEEDS Blue L

Part Lot 17 DEEDS Blue L

HL Lot 2

HL Lot 1

HL Lot 2

Diag. AD

(Diagram distorted to facilitate drafting)

Diag. AC

4

Lot 1
DP 117666

(8th Corner 0.03m North
of SW Corner of top cap of metal Post)
(37) DP 56733

Cowan Street

Land District: North Auckland

Digitally Generated Plan

Generated on: 24/10/2023 1:23pm Page 18 of 24

Height Limited Lots 1 and 2 and Lot 4 being a subdivision of Lot 1 DP 48986,

Lots 1 and 2 DP 56733 and Lot 1 DP 580798

Surveyor: Grant John Wackrow

Firm: Yeomans Survey Solutions Ltd (Auct

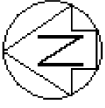
Date of Survey: 21/07/2023

Record of Survey

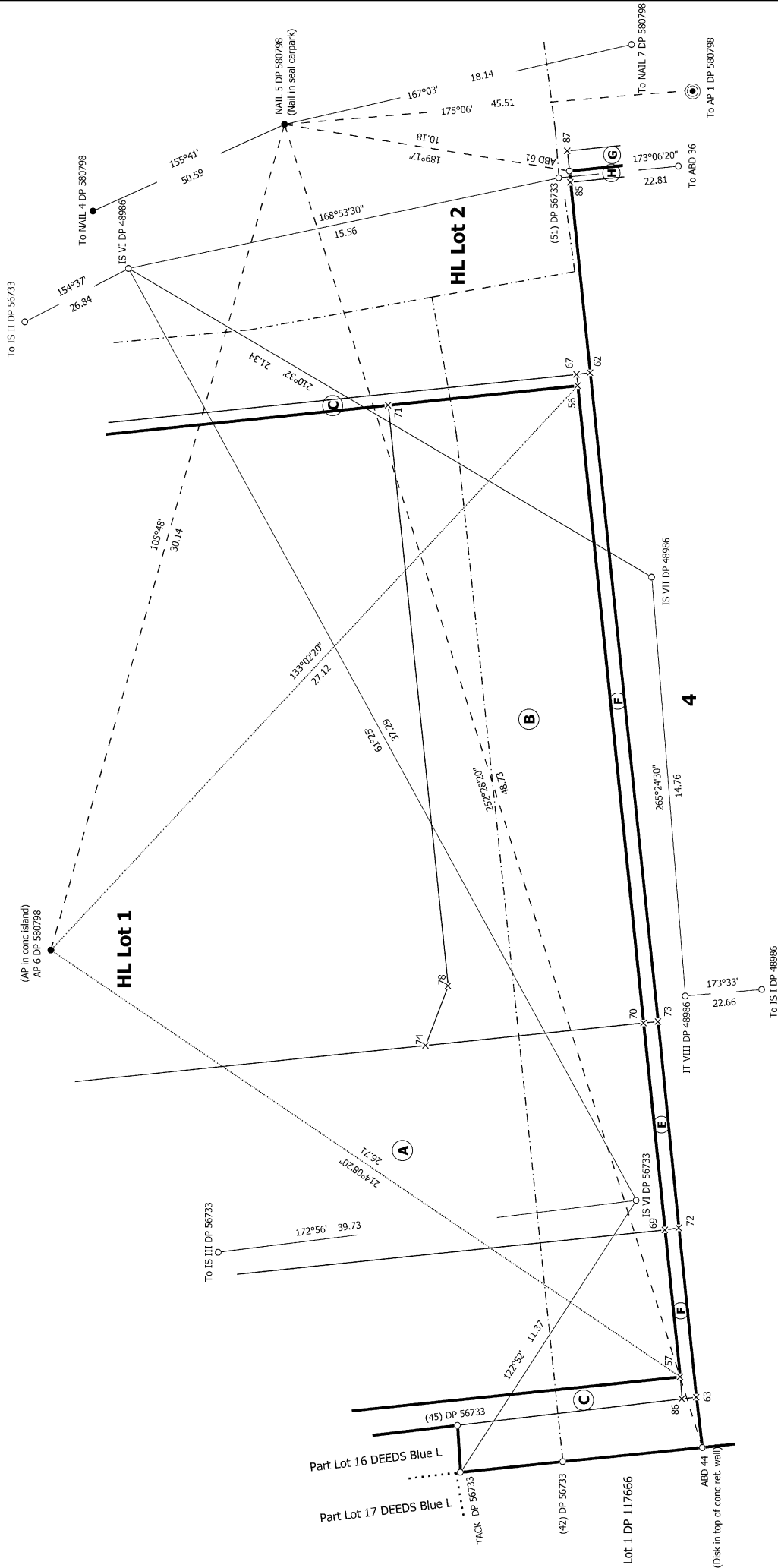
LT 594096

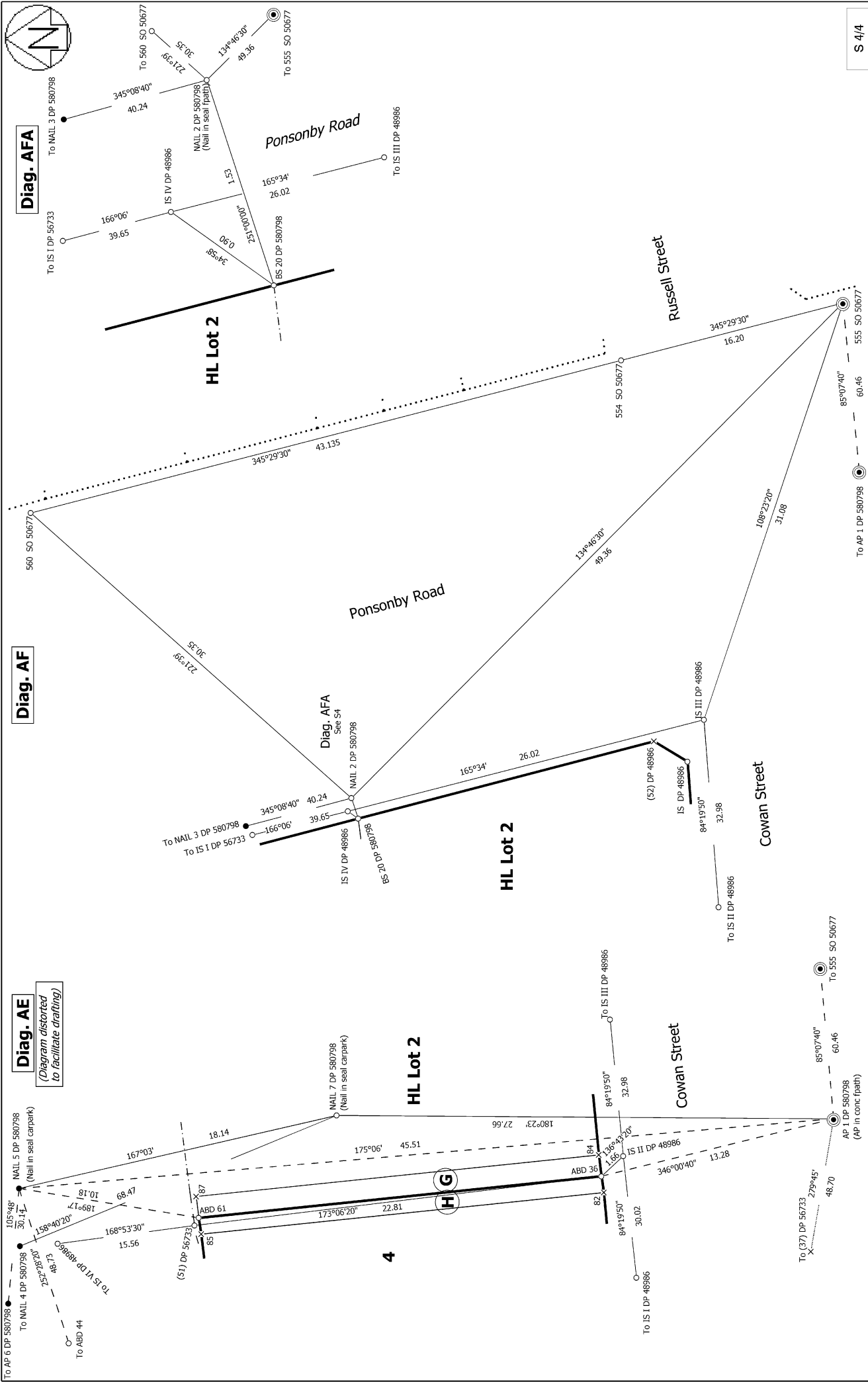
Approved on: 24/10/2023

S 2/4



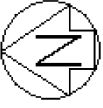
Diag. AB



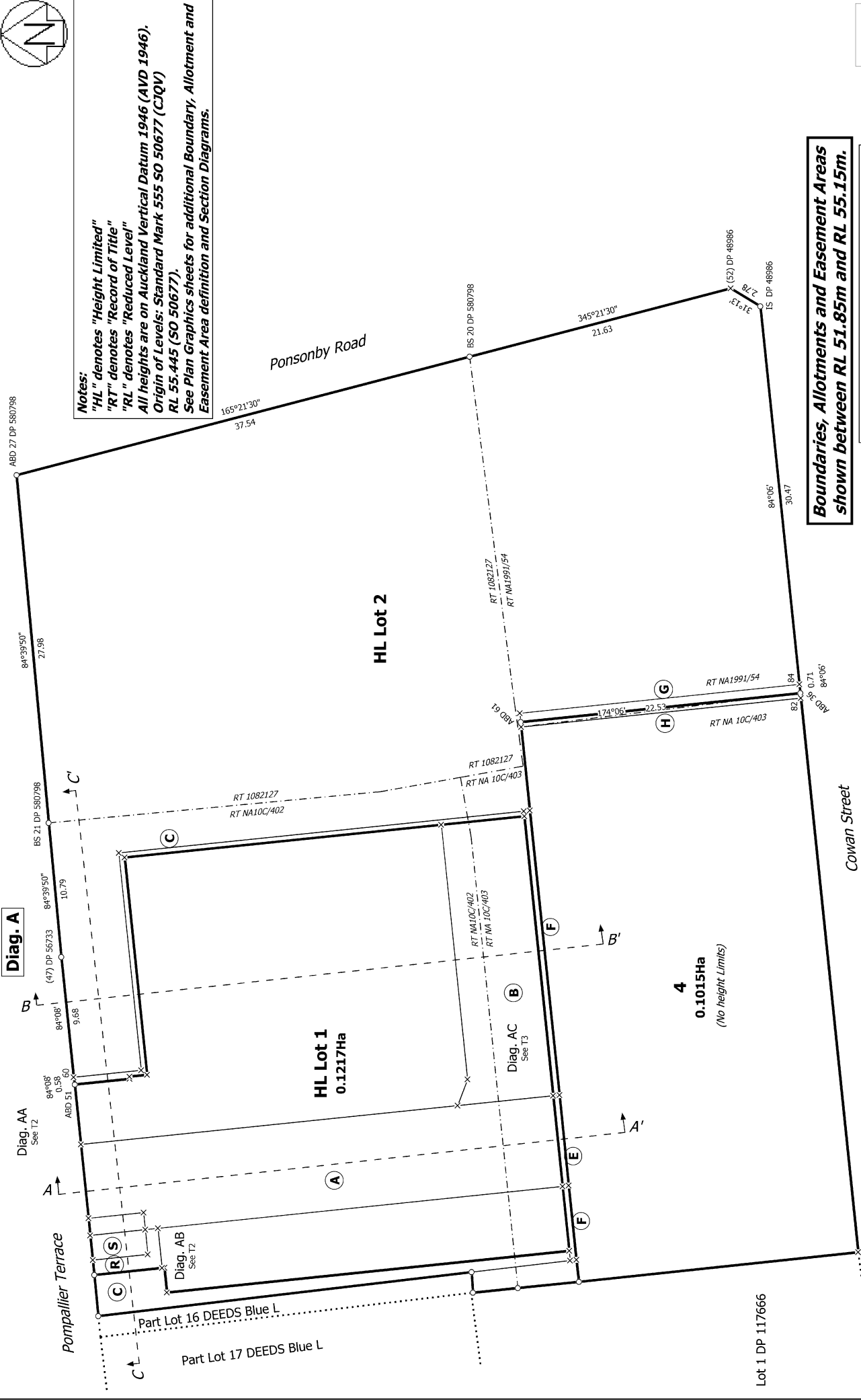


S 4/4

<p>Land District: North Auckland</p> <p>Digitally Generated Plan</p> <p>Generated on: 24/10/2023 1:23pm Page 20 of 24</p>	<p>Height Limited Lots 1 and 2 and Lot 4 being a subdivision of Lot 1 DP 48986, Lots 1 and 2 DP 56733 and Lot 1 DP 580798</p>	<p>Surveyor: Grant John Wackrow</p> <p>Firm: Yeomans Survey Solutions Ltd (Auct)</p> <p>Date of Survey: 21/07/2023</p>	<p>Record of Survey</p> <p>LT 594096</p> <p>Approved on: 24/10/2023</p>
--	--	--	---



Notes:
 "HL" denotes "Height Limited"
 "RT" denotes "Record of Title"
 "RL" denotes "Reduced Level"
 All heights are on Auckland Vertical Datum 1946 (AVD 1946).
 RL 55.445 (SO 50677).
 See Plan Graphics sheets for additional Boundary, Allotment and Easement Area definition and Section Diagrams.



Boundaries, Allotments and Easement Areas shown between RL 51.85m and RL 55.15m.

T 1/4

Parcels shown here are at ground level

Record of Survey
 LT 594096
 Approved on: 24/10/2023

Surveyor: Grant John Wackrow
 Firm: Yeomans Survey Solutions Ltd (Auch)
 Date of Survey: 21/07/2023

Height Limited Lots 1 and 2 and Lot 4 being a subdivision of Lot 1 DP 48986,
 Lots 1 and 2 DP 56733 and Lot 1 DP 580798

Land District: North Auckland
 Digitally Generated Plan
 Generated on: 24/10/2023 1:23pm Page 21 of 24

File: 8255 Stage 1



Diag. ACA
(Diagram distorted to facilitate drafting)

Diag. AC

HL Lot 2

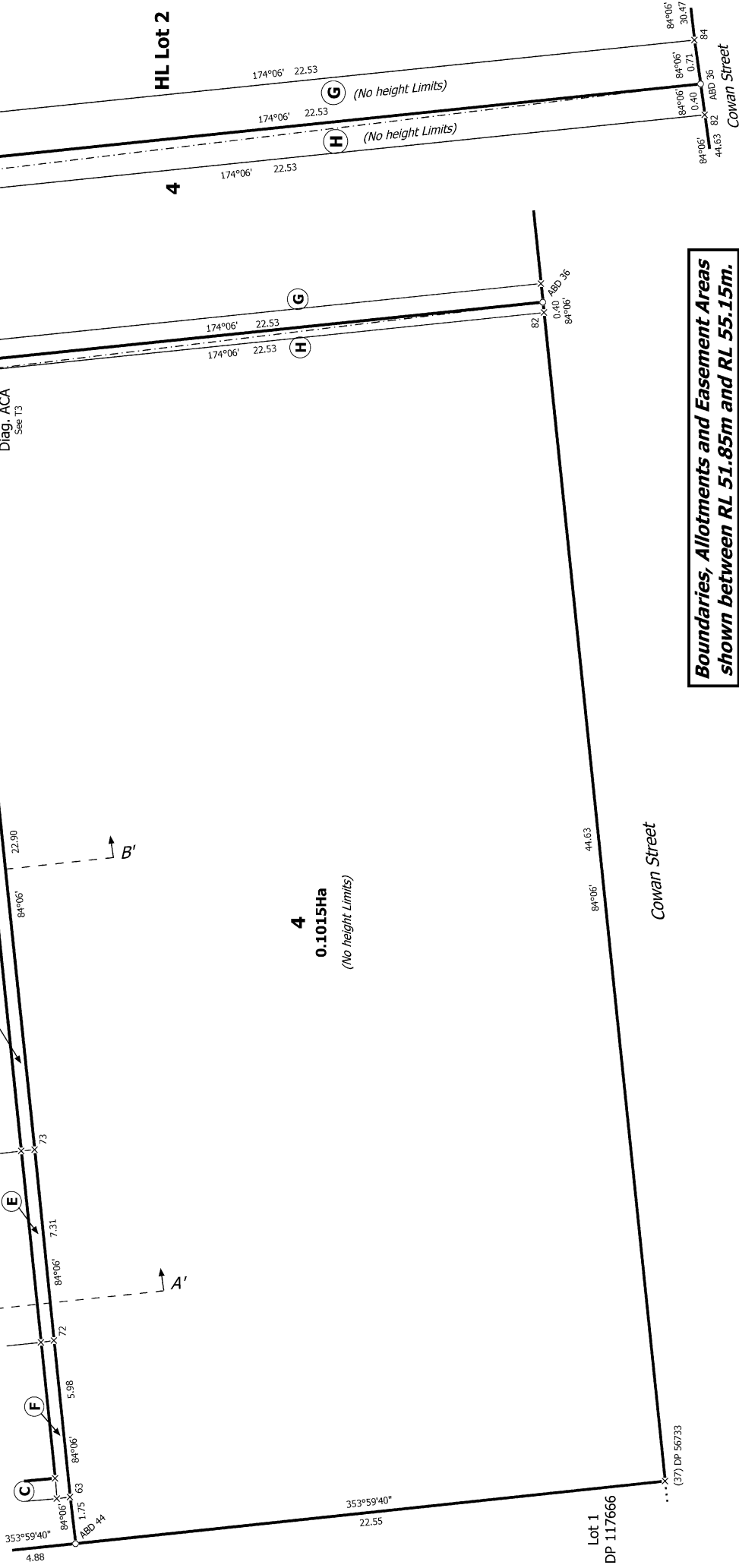
HL Lot 1

HL Lot 2

HL Lot 2

4

4
0.1015Ha
(No height Limits)



T 3/4

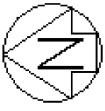
Land District: North Auckland

Digitally Generated Plan
Generated on: 24/10/2023 1:23pm Page 23 of 24

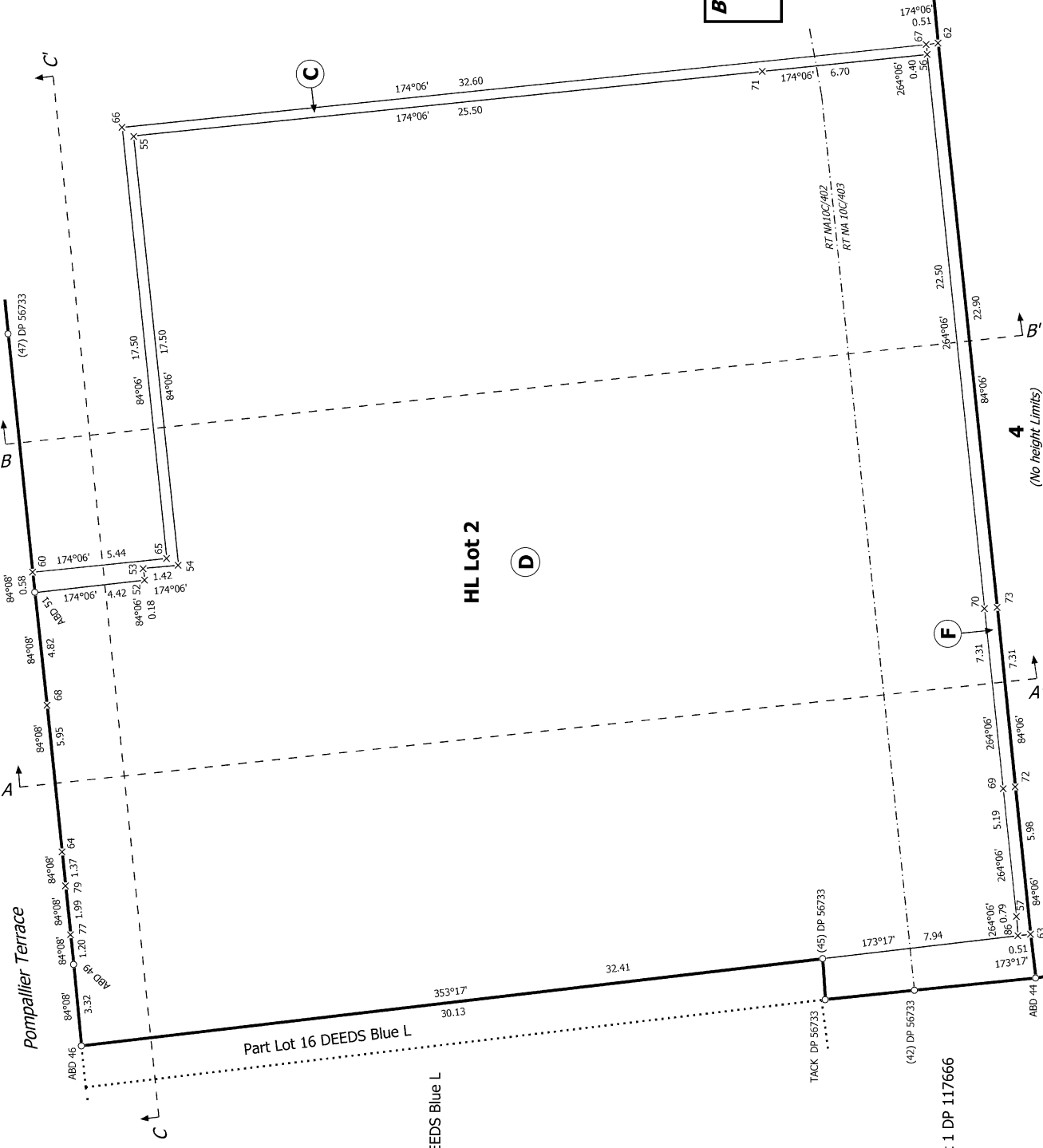
Height Limited Lots 1 and 2 and Lot 4 being a subdivision of Lot 1 DP 48986,
Lots 1 and 2 DP 56733 and Lot 1 DP 580798

Surveyor: Grant John Wackrow
Firm: Yeomans Survey Solutions Ltd (Auch
Date of Survey: 21/07/2023

Record of Survey
LT 594096
Approved on: 24/10/2023



Diag. AAA



Boundaries, Allotments and Easement Areas shown below RL 51.85m.

T 4/4

Land District: North Auckland

Digitally Generated Plan
Generated on: 24/10/2023 1:23pm Page 24 of 24

Height Limited Lots 1 and 2 and Lot 4 being a subdivision of Lot 1 DP 48986, Lots 1 and 2 DP 56733 and Lot 1 DP 580798

Surveyor: Grant John Wackrow
Firm: Yeomans Survey Solutions Ltd (Auct)
Date of Survey: 21/07/2023

Record of Survey
LT 594096
Approved on: 24/10/2023