



Record of Survey - LT 592722

Survey Number LT 592722
Surveyor Reference 2976 - Long Bay - Unit title buildings 1-3
Surveyor Diane Alison Moriarty
Survey Firm Mckenzie & Co Consultants Ltd
Surveyor Declaration I Diane Alison Moriarty, being a licensed cadastral surveyor, certify that--
(a) this dataset provided by me and its related survey are accurate, correct and in accordance with the Cadastral Survey Act 2002 and Cadastral Survey Rules 2021; and
(b) the survey was undertaken by me or under my personal direction.
Declared on 07 Feb 2024 12:00 PM

Survey Details

Dataset Description Subsidiary Unit Development of PU 02 and PU 03 DP 518132
Purpose Subsidiary Standard Unit Plan
Status Approved as to Survey **Type** Survey
Land District North Auckland **Survey Class** Class A
Meridional Circuit Mount Eden 2000 **Vertical Datum** None

Survey Dates

Surveyed Date 07/03/2002 **Certified Date** 07/02/2024
Submitted Date 07/02/2024 12:00:41 **Survey Approval Date** 08/02/2024
Deposit Date

Referenced Surveys

Survey Number	Land District	Bearing Correction
DP 510319	North Auckland	0°00'00"
DP 518132	North Auckland	0°00'00"
DP 518133	North Auckland	0°00'00"
DP 523595	North Auckland	0°00'00"
DP 536467	North Auckland	0°00'00"

Territorial Authorities

Auckland Council

Comprised In

RT 902346
RT 811237
RT 811238

Created Parcels

Parcels	Parcel Intent	Area	RT Reference
Principal Unit 312 Deposited Plan 592722	Principal Unit		1160139
Principal Unit 201 Deposited Plan 592722	Principal Unit		1159387
Principal Unit 202 Deposited Plan 592722	Principal Unit		1159388
Principal Unit 203 Deposited Plan 592722	Principal Unit		1159389
Principal Unit 204 Deposited Plan 592722	Principal Unit		1159390



Record of Survey - LT 592722

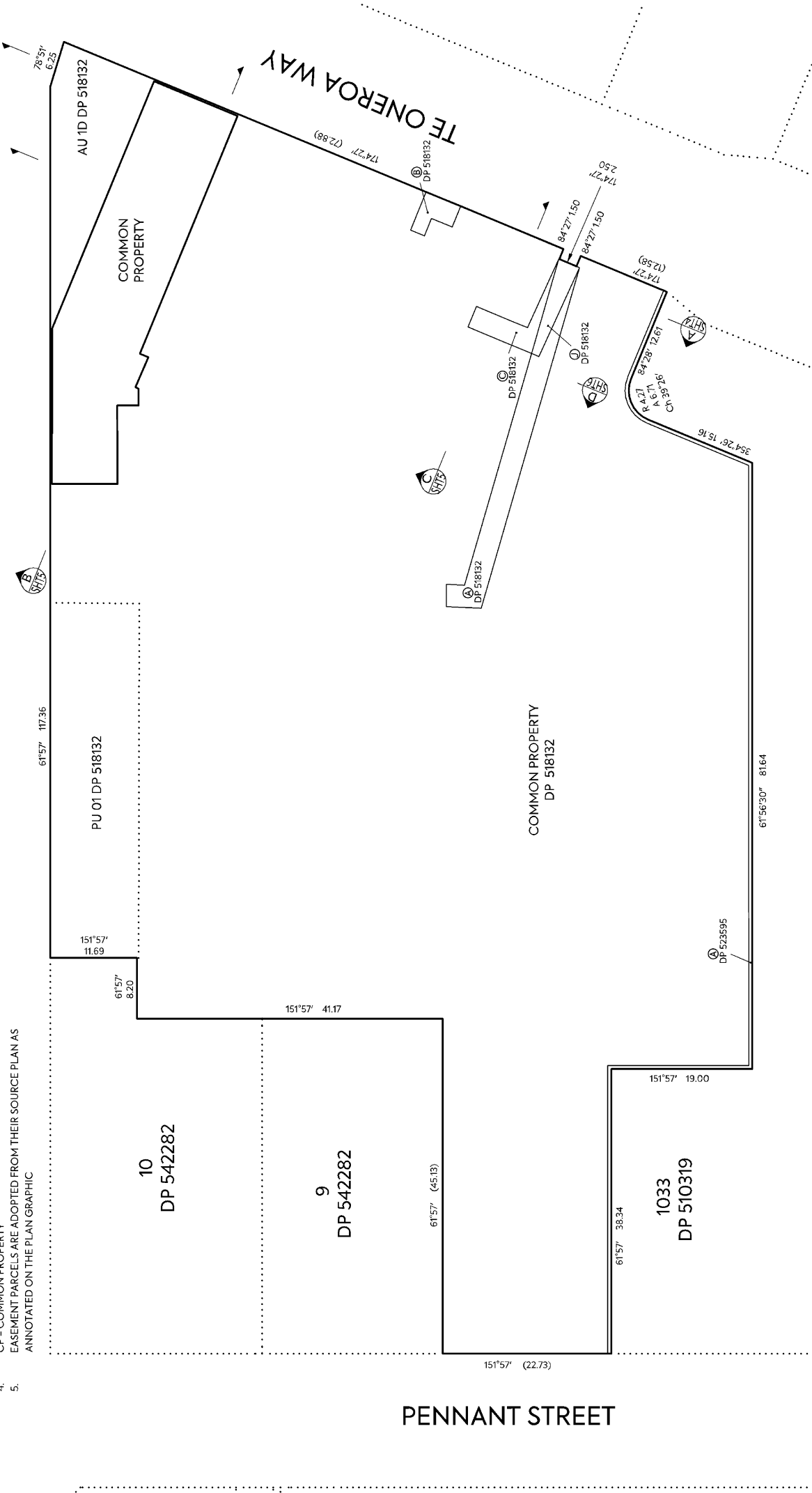
Created Parcels

Parcels	Parcel Intent	Area	RT Reference
Principal Unit 301 Deposited Plan 592722	Principal Unit		1159391
Principal Unit 302 Deposited Plan 592722	Principal Unit		1159392
Principal Unit 303 Deposited Plan 592722	Principal Unit		1159393
Principal Unit 304 Deposited Plan 592722	Principal Unit		1159394
Principal Unit 305 Deposited Plan 592722	Principal Unit		1159395
Principal Unit 306 Deposited Plan 592722	Principal Unit		1159396
Principal Unit 307 Deposited Plan 592722	Principal Unit		1159397
Principal Unit 308 Deposited Plan 592722	Principal Unit		1159398
Principal Unit 309 Deposited Plan 592722	Principal Unit		1159399
Principal Unit 310 Deposited Plan 592722	Principal Unit		1159400
Principal Unit 311 Deposited Plan 592722	Principal Unit		1159401
Total Area		<hr/> 0.0000 Ha	

NOTES

1. THE BOUNDARIES OF PRINCIPAL UNITS ARE THE CENTRELINES OF WALLS AND FLOOR SLABS AND THE PROJECTION THEREOF WHERE APPLICABLE, UNLESS NOTED OTHERWISE
2. PU - PRINCIPAL UNIT
4. CP - COMMON PROPERTY
5. EASEMENT PARCELS ARE ADOPTED FROM THEIR SOURCE PLAN AS ANNOTATED ON THE PLAN GRAPHIC

GLENVAR RIDGE ROAD



PENNANT STREET



MCKENZIE & CO.

CLIENT
AMBENTOM HOLDINGS LIMITED

PROJECT
LONG BAY VILLAGE RETAIL AND COMMERCIAL CENTRE AUCKLAND

TITLE
SUBSIDIARY UNIT DEVELOPMENT OF PU 02 & PU 03 DP 518132 BELOW LEVEL 2

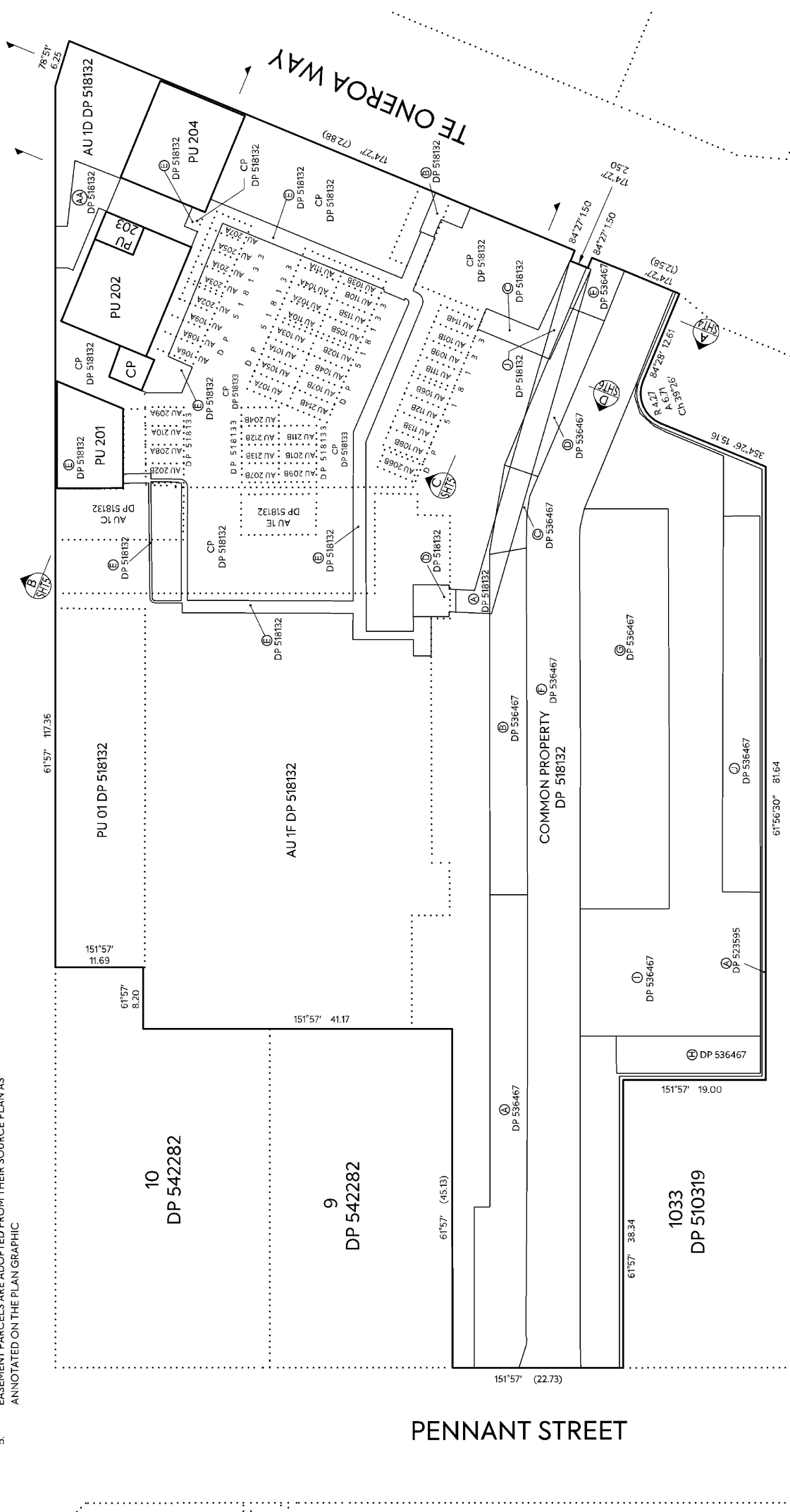
PURPOSE OF ISSUE
LT 592722 - SHEET 1 OF 6
 SCALE
1:500
 DO NOT SCALE
 DRAWING NO.
2976-PLAN GRAPHIC 1 B

REV	DESCRIPTION	DATE	APP'D BY	CHK'D BY	DATE
B	EDITED FOR REQUIREMENT	3/19/24			
A	FIRST ISSUE	30/07/23			

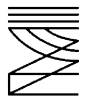
NOTES

1. THE BOUNDARIES OF PRINCIPAL UNITS ARE THE CENTRELINES OF WALLS AND FLOOR SLABS AND THE PROJECTION THEREOF WHERE APPLICABLE, UNLESS NOTED OTHERWISE
2. PU - PRINCIPAL UNIT
4. CP - COMMON PROPERTY
5. EASEMENT PARCELS ARE ADOPTED FROM THEIR SOURCE PLAN AS ANNOTATED ON THE PLAN GRAPHIC

GLENVAR RIDGE ROAD



PENNANT STREET



MCKENZIE & CO.

CLIENT:
AMBENTON HOLDINGS LIMITED

PROJECT:
LONG BAY VILLAGE RETAIL AND COMMERCIAL CENTRE AUCKLAND

TITLE:
SUBSIDIARY UNIT DEVELOPMENT OF PU 02 & PU 03 DP 518132 LEVEL 2

PURPOSE OF ISSUE:
LT 592722 - SHEET 2 OF 6

SCALE:
1:500

DO NOT SCALE

DRAWING NO:
2976-PLAN GRAPHIC 2 B

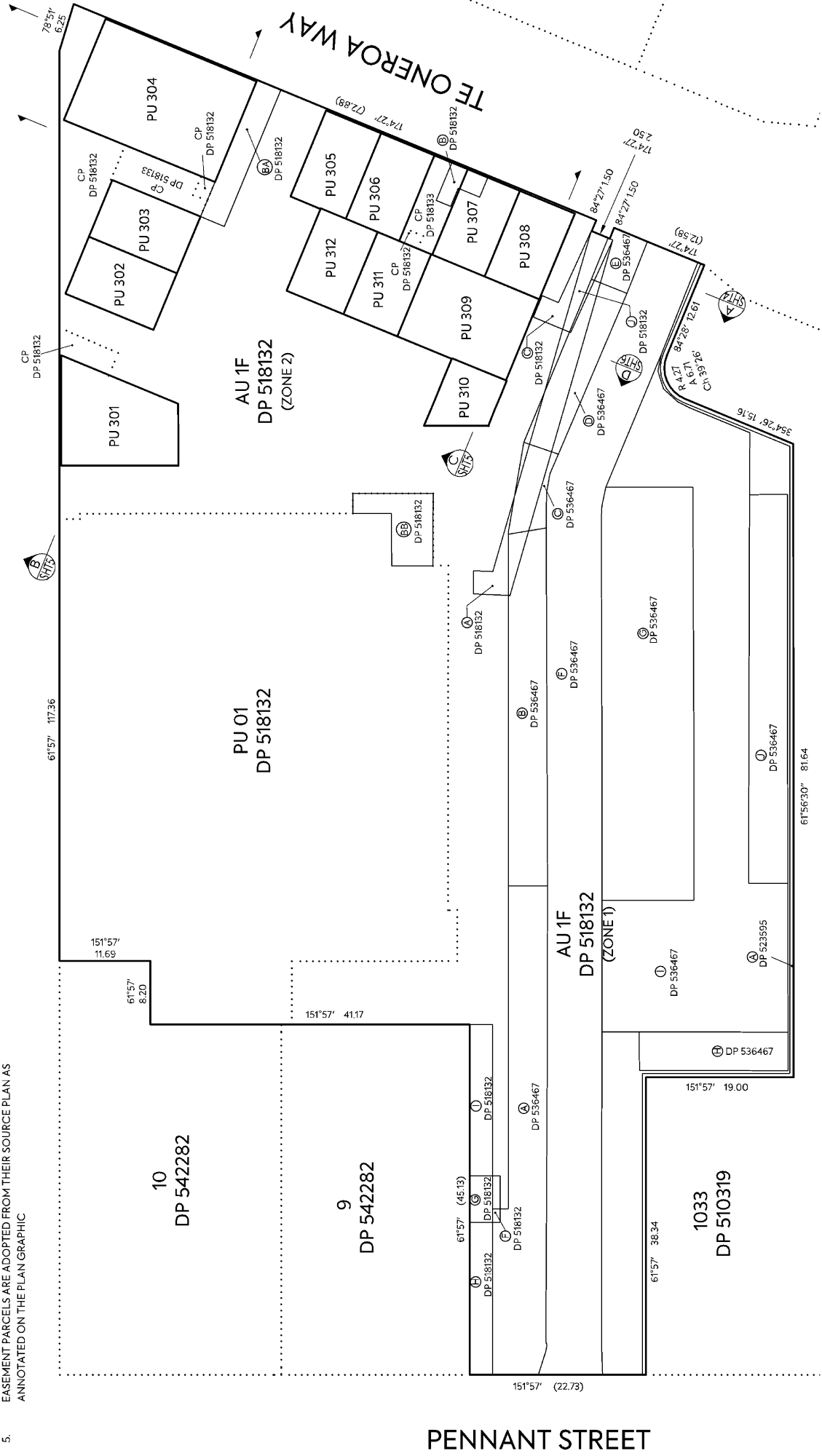
REV: _____

REV	DESCRIPTION	DATE
B	ENTERED FOR REGISTRATION	31/01/24
A	FIRST ISSUE	30/10/23
DRN BY	CHK BY	APP BY

NOTES

1. THE BOUNDARIES OF PRINCIPAL UNITS ARE THE CENTRELINES OF WALLS AND FLOOR SLABS AND THE PROJECTION THEREOF WHERE APPLICABLE, UNLESS NOTED OTHERWISE
2. PU - PRINCIPAL UNIT
4. CP - COMMON PROPERTY
5. EASEMENT PARCELS ARE ADOPTED FROM THEIR SOURCE PLAN AS ANNOTATED ON THE PLAN GRAPHIC

GLENVAR RIDGE ROAD



PENNANT STREET



MCKENZIE & CO.

CLIENT
AMBENTOM HOLDINGS LIMITED

PROJECT
LONG BAY VILLAGE RETAIL AND COMMERCIAL CENTRE AUCKLAND

TITLE
SUBSIDIARY UNIT DEVELOPMENT OF PU 02 & PU 03 DP 518132 LEVEL 3

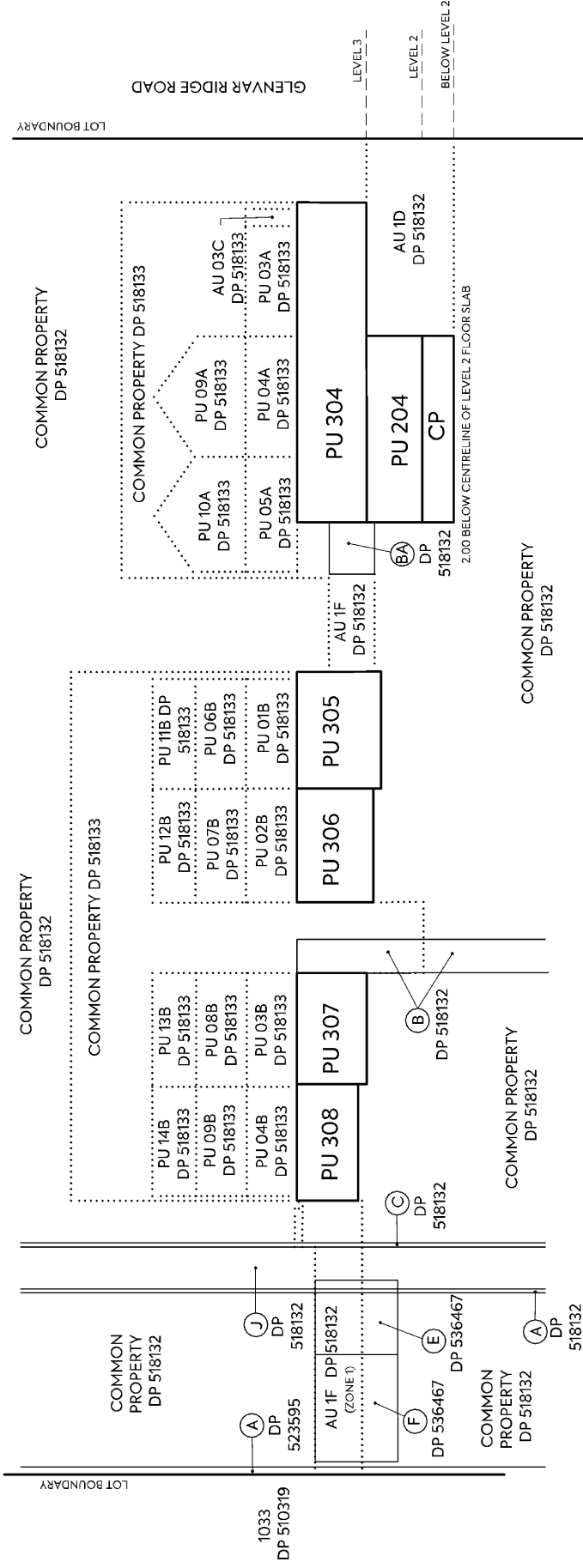
PURPOSE OF ISSUE
LT 592722 - SHEET 3 OF 6

SCALE
1:500

DO NOT SCALE

DRAWING NO.
2976-PLAN GRAPHIC 3 B

REV	DESCRIPTION	DN	RE	DN	DATE
B	EDITED FOR REVISION 4				3/19/24
A	FIRST ISSUE				30/07/23

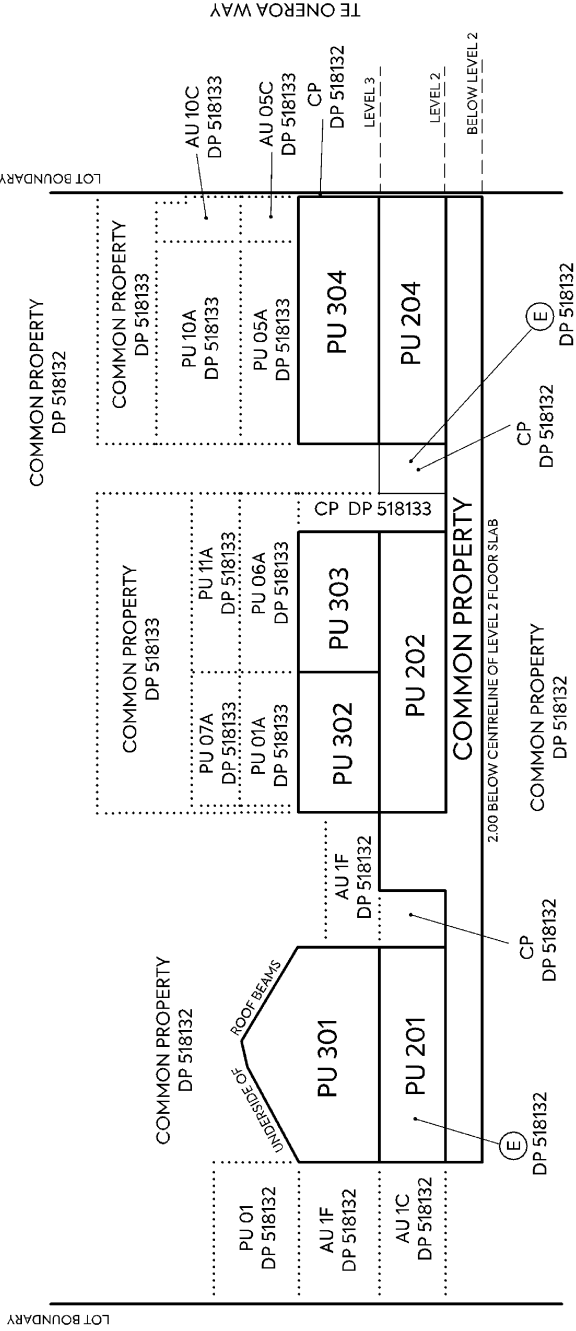


SECTION A

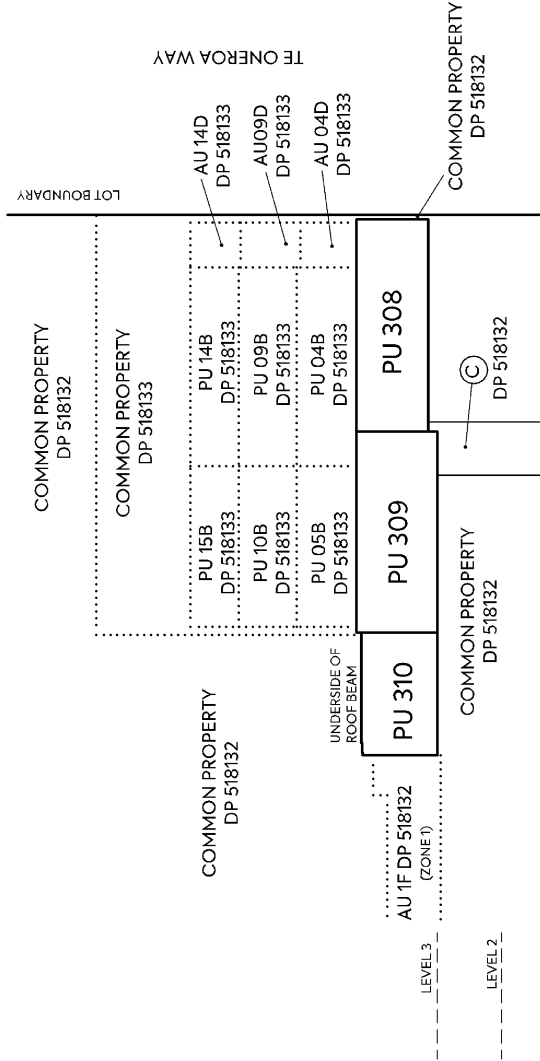
NOTES

1. THE BOUNDARIES OF PRINCIPAL UNITS ARE THE CENTRELINES OF WALLS AND FLOOR SLABS AND THE PROJECTION THEREOF WHERE APPLICABLE, UNLESS NOTED OTHERWISE
2. PU - PRINCIPAL UNIT
4. CP - COMMON PROPERTY
5. EASEMENT PARCELS ARE ADOPTED FROM THEIR SOURCE PLAN AS ANNOTATED ON THE PLAN GRAPHIC

	CLIENT	AMBENTOM HOLDINGS LIMITED	PROJECT	LONG BAY VILLAGE RETAIL AND COMMERCIAL CENTRE AUCKLAND	TITLE	SUBSIDIARY UNIT DEVELOPMENT OF PU 02 & PU 03 DP 518132 SECTION A	PURPOSE OF ISSUE	LT 592722 - SHEET 4 OF 6
	B EDITED FOR REVISION A FIRST ISSUE REV DESCRIPTION	DN RE DRN BY CHK BY APP BY DATE	3/15/24 20/02/25	1033 DP 510319	518132 DP 536467 AU 1F (ZONE 1) DP 518132	518132 DP 536467 AU 1F (ZONE 1) DP 518132	518132 DP 536467 AU 1F (ZONE 1) DP 518132	1:300 DO NOT SCALE DRAWING NO: 2976-PLAN GRAPHIC 4 B REV:



SECTION B



SECTION C

NOTES

1. THE BOUNDARIES OF PRINCIPAL UNITS ARE THE CENTRELINES OF WALLS AND FLOOR SLABS AND THE PROJECTION THEREOF WHERE APPLICABLE, UNLESS NOTED OTHERWISE
2. PU - PRINCIPAL UNIT
4. CP - COMMON PROPERTY
5. EASEMENT PARCELS ARE ADOPTED FROM THEIR SOURCE PLAN AS ANNOTATED ON THE PLAN GRAPHIC



MCKENZIE & CO.

CLIENT
AMBENTOM
HOLDINGS LIMITED

PROJECT
LONG BAY VILLAGE
RETAIL AND COMMERCIAL CENTRE
AUCKLAND

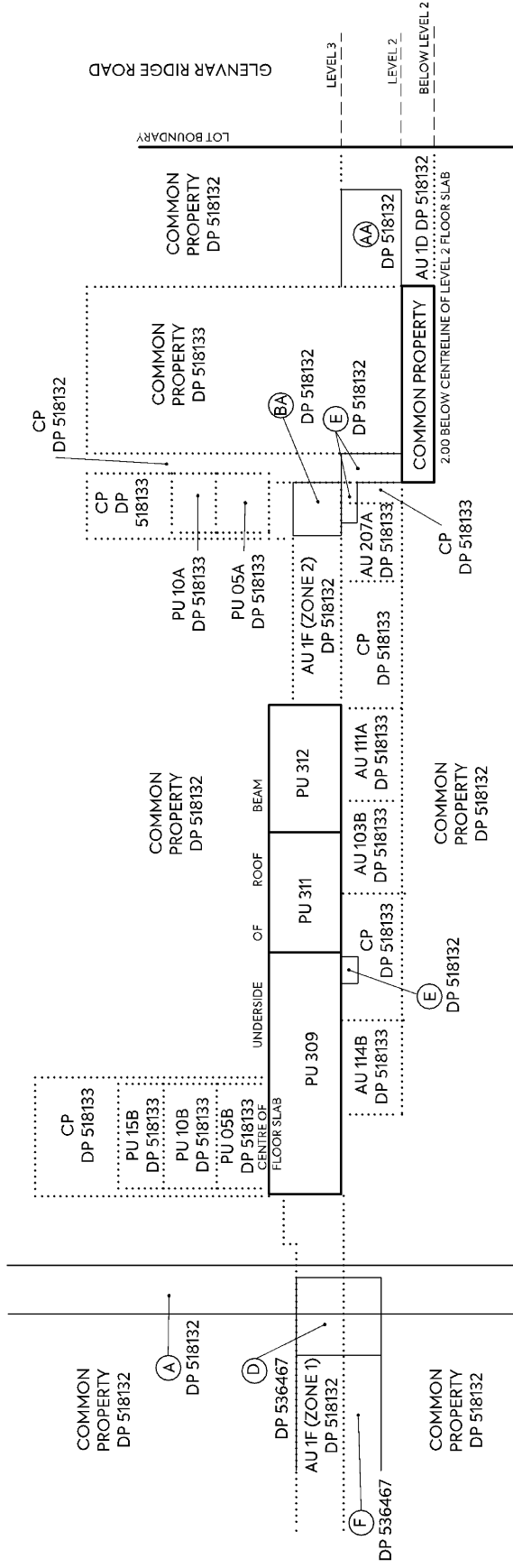
TITLE
SUBSIDIARY UNIT DEVELOPMENT
OF PU 02 & PU 03 DP 518132
SECTIONS B & C

PURPOSE OF ISSUE
LT 592722 - SHEET 5 OF 6

SCALE
1:300
DO NOT SCALE

DRAWING NO.
2976-PLAN GRAPHIC 5 B

REV	DESCRIPTION	DATE	APP BY	CHK BY	DRN BY
B	EDITED FOR REQUISITION	3/19/24			
A	FIRST ISSUE	20/02/23			



SECTION D

NOTES

1. THE BOUNDARIES OF PRINCIPAL UNITS ARE THE CENTRELINES OF WALLS AND FLOOR SLABS AND THE PROJECTION THEREOF WHERE APPLICABLE, UNLESS NOTED OTHERWISE
2. PU - PRINCIPAL UNIT
4. CP - COMMON PROPERTY
5. EASEMENT PARCELS ARE ADOPTED FROM THEIR SOURCE PLAN AS ANNOTATED ON THE PLAN GRAPHIC



MCKENZIE & CO.

CLIENT
AMBENTOM
HOLDINGS LIMITED

PROJECT
LONG BAY VILLAGE
RETAIL AND COMMERCIAL CENTRE
AUCKLAND

TITLE
SUBSIDIARY UNIT DEVELOPMENT
OF PU 02 & PU 03 DP 518132

PURPOSE OF ISSUE
LT 592722 - SHEET 6 OF 6
SCALE
1:300
DO NOT SCALE
DRAWING NO.
2976-PLAN GRAPHIC 6
REV.
A

SCHEDULE OF EXISTING SUBJECT EASEMENTS				
PURPOSE	SHOWN	BURDENED LAND/ SERVIENT TENEMENT	CREATED BY	DEFINED ON
PARKING	A,B,C,D,E,G,H,J on DP 536467	LOT 1031 DP 510319	11505565.1	DP 536467
RIGHT OF WAY	F,I on DP 536467			
RIGHT OF SUPPORT AND MAINTENANCE	A on DP 523595	LOT 1031 DP 510319	11262403.1	DP 523595
PEDESTRIAN RIGHT OF WAY	AA on DP 518132	AU 1D DP518132	11505565.13	DP 518132
	BA on DP 518132	AU 1F DP 518132		
	G,H,I on DP 518132	LOT 1031 DP 510319	11505565.4	
RIGHT TO DRAIN WATER, OVERHANGING EAVES & MAINTENANCE	F on DP 518132	LOT 1031 DP 510319		

*NOTE - SOME EASEMENT AREAS ARE SUBJECT TO HEIGHT RESTRICTIONS, REFER ELEVATIONS (SHEETS 4 & 5 OF PLAN GRAPHIC) AND UNDERLYING PLANS

SCHEDULE OF EXISTING SUBJECT EASEMENTS IN GROSS				
PURPOSE	SHOWN	BURDENED LAND/ SERVIENT TENEMENT	CREATED BY	DEFINED ON
RIGHT TO CONVEY ELECTRICITY	A, D & J on DP 518132	LOT 1031 DP 510319	11505565.5	DP 518132
RIGHT TO CONVEY TELECOMMUNICATIONS	B on DP 518132		11505565.7	
RIGHT TO CONVEY GAS	C & J on DP 518132		11505565.6	
EMBEDDED NETWORK AND RIGHT TO CONVEY ELECTRICITY	E on DP 518132		11505565.8	
RIGHT TO DRAIN WATER	F on DP 536467		11505565.3	DP 536467

*NOTE - SOME EASEMENT AREAS ARE SUBJECT TO HEIGHT RESTRICTIONS, REFER ELEVATIONS (SHEETS 4 & 5 OF PLAN GRAPHIC) AND UNDERLYING PLANS

SCHEDULE OF EXISTING APPURTENANT EASEMENTS				
PURPOSE	SHOWN	BURDENED LAND/ SERVIENT TENEMENT	CREATED BY	DEFINED ON
PEDESTRIAN RIGHT OF WAY	BB on DP 518132	PU 01 DP 518132	11505565.14	DP 518132
RIGHT OF SUPPORT AND MAINTENANCE	B on DP 523595	LOT 1033 DP 510319	11262403.1	DP 523595
RIGHT OF WAY	COLOURED BLUE on DP 51084	LOTS 1 & 2 DP 54616	TE 690708	DP 51084
	O on DP 536467		11505565.1	DP 536467
PARKING	M,N,P on DP 536467	LOT 1035 DP 510319		

*NOTE - SOME EASEMENT AREAS ARE SUBJECT TO HEIGHT RESTRICTIONS, REFER ELEVATIONS (SHEETS 4 & 5 OF PLAN GRAPHIC) AND UNDERLYING PLANS

Layered Unit Title Development Diagram
pursuant to s21(1)(c) Unit Titles Act 2010

