



Record of Survey - LT 592650

Survey Number LT 592650
Surveyor Reference 4110 Ernest Brothers Limited
Surveyor Ross James Overington
Survey Firm Overington Surveyors
Surveyor Declaration I Ross James Overington, being a licensed cadastral surveyor, certify that--
(a) this dataset provided by me and its related survey are accurate, correct and in accordance with the Cadastral Survey Act 2002 and Cadastral Survey Rules 2021; and
(b) the survey was undertaken by me or under my personal direction.
Declared on 05 Oct 2023 12:05 PM

Survey Details

Dataset Description Lots 1 - 3 Being Subdivision of Lot 1 DP 9470, Lot 2 DP 9417, Lots 1 & 2 & Pt Lot 3 DP 16669AK & Pt Allot 162 Waioeka PSH
Purpose LT Subdivision
Status Approved as to Survey
Land District Gisborne
Meridional Circuit Poverty Bay 2000

Type	Survey
Survey Class	Class B
Vertical Datum	None

Survey Dates

Surveyed Date	04/07/2023	Certified Date	05/10/2023
Submitted Date	05/10/2023 12:05:24	Survey Approval Date	06/10/2023
Deposit Date			

Referenced Surveys

Survey Number	Land District	Bearing Correction
DP 436650	Gisborne	0°00'00"
DP 321869	Gisborne	0°00'00"
DP 7079	Gisborne	0°00'00"
DP 7461	Gisborne	0°00'00"
DP 7884	Gisborne	0°00'00"
SO 6954	Gisborne	0°00'00"
DP 9417	Gisborne	0°00'00"
DP 16669/AK	Gisborne	-0°52'30"
DP 1951/AK	Gisborne	-0°52'30"

Territorial Authorities

Ōpōtiki District

Comprised In

RT GS6C/671
RT GS5A/1347

Created Parcels

Parcels	Parcel Intent	Area	RT Reference
Area EA Deposited Plan 592650	Easement		



Record of Survey - LT 592650

Created Parcels

Parcels	Parcel Intent	Area	RT Reference
Lot 1 Deposited Plan 592650	Fee Simple Title	0.4893 Ha	1142234
Lot 2 Deposited Plan 592650	Fee Simple Title	1.8497 Ha	1142235
Lot 3 Deposited Plan 592650	Fee Simple Title	35.1420 Ha	1142236
Area A Deposited Plan 592650	Easement		
Area B Deposited Plan 592650	Easement		
Area C Deposited Plan 592650	Easement		
Area D Deposited Plan 592650	Easement		
Area E Deposited Plan 592650	Easement		
Total Area		<hr/> 37.4810 Ha	

Mark and Vector

Survey Number DP 592650

Meridional Circuit Poverty Bay 2000

From	To	Code	Bearing	Adpt Surv	Bearing Correction	Distance	Adpt Surv	Class
EDM BASE MARK 7 SO 7817	IS I DP 7461	ob2	139°06'35" M			2,895.38 M		
IS I DP 7461	IT I SO 6954	ob3	42°42'35" M			544.25 M		
IT I SO 6954	EDM BASE MARK 7 SO 7817	ob8	308°18'25" M			2,885.85 M		
IT I SO 6954	IT VIII DP 7884	ob9	250°26'45" M			571.46 M		
IT VIII DP 7884	IS I DP 7461	ob16	140°56'10" M			268.73 M		
IT VIII DP 7884	IT VII SO 6954	ob17	140°57'30" A	DP 7884	0°00'00"	198.44 A	DP 7884	
IT VII SO 6954	IS I DP 7461	ob18	140°52'30" A	DP 7884	0°00'00"	70.30 A	DP 7884	
IS I DP 7461	IT III DP 7079	ob4	140°52'55" M			607.19 M		
IT III DP 7079	IT IV DP 7079	ob21	140°53'20" M			93.35 M		
IT IV DP 7079	IT X DP 7079	ob23	51°03'40" M			172.01 M		
IT X DP 7079	IT VII DP 7079	ob26	321°44'00" M			326.36 M		
IT VII DP 7079	IT 10 DP 592650	ob31	316°36'30" M			388.63 M		
IT 10 DP 592650	IS I DP 7461	ob33	225°56'20" M			148.45 M		
IT X DP 7079	IT I SO 6954	ob27	346°06'25" M			860.50 M		
IT I SO 6954	IS XXIII DP 16669AK	ob10	229°13'00" A	DP 7884	0°00'00"	320.24 A	DP 7884	
IS XXIII DP 16669AK	IT VII SO 6954	ob40	231°28'20" A	DP 7884	0°00'00"	218.64 A	DP 7884	
IS I DP 7461	IS IV DP 7461	ob5	140°52'40" A	DP 7461	0°00'00"	73.21 A	DP 7461	
IS IV DP 7461	IS I DP 7079	ob43	140°52'40" A	DP 7461	0°00'00"	44.74 A	DP 7461	
IS I DP 7079	IT II DP 7079	ob44	140°52'40" A	DP 9417	0°00'00"	181.20 A	DP 9417	
IT II DP 7079	IB I DP 9417	ob45	140°52'40" A	DP 9417	0°00'00"	226.65 A	DP 9417	
IB I DP 9417	IT III DP 7079	ob93	140°52'40" A	DP 9417	0°00'00"	81.39 A	DP 9417	
IT IV DP 7079	IT IV SO 6954	ob24	140°52'40" A	DP 7079	0°00'00"	241.99 A	DP 7079	
IT IV SO 6954	IT III SO 6740	ob48	140°42'20" A	DP 7079	0°00'00"	231.89 A	DP 7079	
IT III SO 6740	PEG VIA SO 6954	ob49	318°54'20" A	DP 7079	0°00'00"	231.30 A	DP 7079	
PEG VIA SO 6954	IT VIIA SO 6954	ob50	320°53'20" A	SO 6954	0°00'00"	1,011.72 A	SO 6954	
IT VIIA SO 6954	IT VII SO 6954	ob51	36°15'00" A	SO 6954	0°00'00"	7.24 A	SO 6954	
IT II DP 7079	IT V DP 7079	ob46	45°20'30" A	DP 9417	0°00'00"	133.20 A	DP 9417	
IT V DP 7079	IS VI DP 7079	ob52	71°58'25" A	DP 9417	0°00'00"	42.51 A	DP 9417	
IS VI DP 7079	IT VII DP 7079	ob53	137°16'30" A	DP 9417	0°00'00"	73.32 A	DP 9417	
IS I DP 7461	PEG IA DP 7461	ob6	99°53'00" A	DP 7461	0°00'00"	8.79 A	DP 7461	
PEG IA DP 7461	PEG IVA DP 7461	ob55	140°52'30" A	DP 7461	0°00'00"	66.00 A	DP 7461	
PEG IVA DP 7461	IS IV DP 7461	ob56	225°08'00" A	DP 7461	0°00'00"	5.80 A	DP 7461	
IS I DP 7461	IT II DP 7461	ob7	53°47'10" A	DP 7461	0°00'00"	75.81 A	DP 7461	
IT II DP 7461	IS III DP 7461	ob58	144°21'30" A	DP 7461	0°00'00"	74.45 A	DP 7461	

Mark and Vector

Survey Number DP 592650

Meridional Circuit Poverty Bay 2000

From	To	Code	Bearing	Adpt Surv	Bearing Correction	Distance	Adpt Surv	Class
IS III DP 7461	IS IV DP 7461	ob60	234°51'10"	A DP 7461	0°00'00"	71.36 A	DP 7461	
IT II DP 7461	PEG IIA DP 7461	ob59	233°07'00"	A DP 7461	0°00'00"	9.88 A	DP 7461	
PEG IIA DP 7461	PEG IIIA DP 7461	ob61	140°18'10"	A DP 7461	0°00'00"	68.70 A	DP 7461	Class B
PEG IIIA DP 7461	IS III DP 7461	ob63	102°58'00"	A DP 7461	0°00'00"	7.60 A	DP 7461	
PEG IIA DP 7461	PEG IA DP 7461	ob62	227°51'25"	A DP 7461	0°00'00"	60.15 A	DP 7461	Class B
PEG IIIA DP 7461	PEG IVA DP 7461	ob64	230°25'50"	A DP 7461	0°00'00"	60.75 A	DP 7461	Class B
IT VII SO 6954	IS (27) DP 7079	ob19	107°58'10"	A DP 7079	0°00'00"	215.89 A	DP 7079	
IS (27) DP 7079	IS I DP 7079	ob65	227°27'50"	A DP 7079	0°00'00"	117.50 A	DP 7079	
IT II DP 7079	PEG IIA DP 7079	ob47	89°42'00"	A DP 7079	0°00'00"	7.51 A	DP 7079	
PEG IIA DP 7079	PEG IIB DP 7079	ob67	140°51'20"	A DP 7079	0°00'00"	4.20 A	DP 7079	
PEG IIB DP 7079	IT II DP 7079	ob68	287°35'00"	A DP 7079	0°00'00"	10.66 A	DP 7079	
IT IV DP 7079	PEG IVA DP 7079	ob25	30°50'00"	A DP 7079	0°00'00"	6.36 A	DP 7079	
PEG IVA DP 7079	PEG IVB DP 7079	ob70	140°51'20"	A DP 7079	0°00'00"	8.00 A	DP 7079	Class B
PEG IVB DP 7079	IT IV DP 7079	ob71	275°05'00"	A DP 7079	0°00'00"	8.34 A	DP 7079	
IS VI DP 7079	PEG VIA DP 7079	ob54	184°27'00"	A DP 7079	0°00'00"	6.86 A	DP 7079	
PEG VIA DP 7079	PEG VIB DP 7079	ob73	140°34'00"	A DP 7079	0°00'00"	1.42 A	DP 7079	Class B
PEG VIB DP 7079	IS VI DP 7079	ob76	357°20'00"	A DP 7079	0°00'00"	7.95 A	DP 7079	
PEG VIA DP 7079	PEG IIA DP 7079	ob74	231°50'30"	A DP 7079	0°00'00"	161.68 A	DP 7079	Class B
IT X DP 7079	PEG XA DP 7079	ob28	271°17'00"	A DP 7079	0°00'00"	4.33 A	DP 7079	
PEG XA DP 7079	PEG IVA DP 7079	ob78	230°51'20"	A DP 7079	0°00'00"	162.73 A	DP 7079	
PEG VIB DP 7079	UNMK 75 DP 592650	ob77	140°34'00"	A DP 7079	0°00'00"	195.19 C		Class B
UNMK 75 DP 592650	PEG VIIIB DP 7079	ob129	140°34'00"	A DP 7079	0°00'00"	13.88 C		Class B
PEG VIIIB DP 7079	PEG 42 DP 592650	ob79	50°42'00"	A DP 7079	0°00'00"	13.88 C		Class B
PEG 42 DP 592650	UNMK 81 DP 592650	ob88	50°42'00"	A DP 7079	0°00'00"	3.01 C		
UNMK 81 DP 592650	PEG VIIIA DP 7079	ob138	50°42'00"	A DP 7079	0°00'00"	5.10 C		

Mark and Vector

Survey Number DP 592650

Meridional Circuit Poverty Bay 2000

From	To	Code	Bearing	Adpt Surv	Bearing Correction	Distance	Adpt Surv	Class
PEG VIIIA DP 7079	UNMK (45) DP 9417	ob81	140°34'00"	A DP 7079	0°00'00"	9.89 A	DP 9417	
UNMK (45) DP 9417	UNMK (52) DP 9417	ob92	140°34'00"	A DP 7079	0°00'00"	9.05 A	DP 9417	Class B
UNMK (52) DP 9417	PEG IXA DP 7079	ob99	140°34'00"	A DP 7079	0°00'00"	81.19 A	DP 9417	
PEG IXA DP 7079	PEG IXB DP 7079	ob82	230°20'00"	A DP 7079	0°00'00"	22.51 A	DP 7079	
PEG IXB DP 7079	PEG XA DP 7079	ob83	140°51'20"	A DP 7079	0°00'00"	80.95 A	DP 7079	
IT 10 DP 592650	PEG 39 DP 592650	ob34	72°57'40"	M		60.17 M		
PEG 39 DP 592650	UNMK 40 DP 592650	ob84	235°34'20"	C		22.52 C		Class B
UNMK 40 DP 592650	PEG 64 DP 592650	ob85	235°34'20"	C		3.00 C		Class B
PEG 64 DP 592650	UNMK 85 DP 592650	ob115	235°34'20"	C		29.81 C		Class B
UNMK 85 DP 592650	PEG 41 DP 592650	ob143	235°34'20"	C		9.11 C		Class B
PEG 41 DP 592650	IT 10 DP 592650	ob87	346°55'00"	M		19.30 M		
IB I DP 9417	PEG (50) DP 9417	ob94	359°47'00"	A DP 9417	0°00'00"	9.43 A	DP 9417	
PEG (50) DP 9417	UNMK (51) DP 9417	ob95	50°23'00"	A DP 9417	0°00'00"	156.94 A	DP 9417	Class B
UNMK (51) DP 9417	PEG VIIIB DP 7079	ob97	50°23'00"	A DP 9417	0°00'00"	5.79 A	DP 9417	Class B
PEG IIB DP 7079	PEG (50) DP 9417	ob69	140°51'20"	A DP 9417	0°00'00"	210.41 C		
PEG (50) DP 9417	UNMK 53 DP 592650	ob96	140°51'20"	A DP 7079	0°00'00"	35.76 C		Class B
UNMK 53 DP 592650	UNMK 54 DP 592650	ob100	140°51'20"	A DP 7079	0°00'00"	3.01 C		Class B
UNMK 54 DP 592650	PEG 55 DP 592650	ob102	140°51'20"	A DP 7079	0°00'00"	63.20 C		Class B
PEG 55 DP 592650	PEG IVA DP 7079	ob104	140°53'00"	A DP 7079	0°00'00"	77.93 C		Class B
IT X DP 7079	PEG 56 DP 592650	ob29	334°06'20"	M		83.92 M		
PEG 56 DP 592650	PEG 57 DP 592650	ob105	230°33'40"	C		16.60 C		Class B
PEG 57 DP 592650	PEG 55 DP 592650	ob106	230°33'40"	C		168.63 C		Class B
IT III DP 7079	PEG 55 DP 592650	ob22	116°37'00"	M		14.52 M		
PEG 42 DP 592650	UNMK 65 DP 592650	ob89	136°02'40"	C		8.77 C		Class B

Mark and Vector

Survey Number DP 592650

Meridional Circuit Poverty Bay 2000

From	To	Code	Bearing	Adpt Surv	Bearing Correction	Distance	Adpt Surv	Class
UNMK 65 DP 592650	UNMK 66 DP 592650	ob116	136°02'40"	C		3.69 C		Class B
UNMK 66 DP 592650	UNMK 43 DP 592650	ob118	136°02'40"	C		1.84 C		Class B
UNMK 43 DP 592650	UNMK 44 DP 592650	ob90	136°02'40"	C		3.01 C		Class B
UNMK 44 DP 592650	UNMK 62 DP 592650	ob91	136°02'40"	C		1.71 C		Class B
UNMK 62 DP 592650	PEG 56 DP 592650	ob111	136°02'40"	C		83.74 C		Class B
UNMK 53 DP 592650	UNMK 58 DP 592650	ob101	46°01'20"	C		133.98 C		Class B
UNMK 58 DP 592650	UNMK 59 DP 592650	ob107	337°13'00"	C		10.85 C		Class B
UNMK 59 DP 592650	UNMK 71 DP 592650	ob108	49°12'00"	C		40.76 C		Class B
UNMK 71 DP 592650	UNMK 43 DP 592650	ob123	49°12'00"	C		0.51 C		
UNMK 54 DP 592650	UNMK 60 DP 592650	ob103	46°01'20"	C		136.29 C		Class B
UNMK 60 DP 592650	UNMK 61 DP 592650	ob109	337°13'00"	C		10.72 C		Class B
UNMK 61 DP 592650	UNMK 72 DP 592650	ob110	49°12'00"	C		38.51 C		Class B
UNMK 72 DP 592650	UNMK 44 DP 592650	ob125	49°12'00"	C		0.75 C		
UNMK (51) DP 9417	UNMK (63) DP 9417	ob98	81°36'00"	A DP 9417	0°00'00"	23.67 A DP 9417		Class B
UNMK (63) DP 9417	UNMK 71 DP 592650	ob113	140°34'00"	A DP 9417	0°00'00"	2.07 C		Class B
UNMK 65 DP 592650	UNMK (62) DP 9417	ob117	81°36'00"	A DP 9417	0°00'00"	2.27 C		Class B
UNMK (62) DP 9417	UNMK 74 DP 592650	ob119	50°34'00"	A DP 9417	0°00'00"	1.16 C		Class B
UNMK 74 DP 592650	UNMK (45) DP 9417	ob128	50°34'00"	A DP 9417	0°00'00"	4.31 C		Class B
PEG VIII B DP 7079	UNMK 65 DP 592650	ob80	81°36'00"	A DP 9417	0°00'00"	17.01 C		Class B
UNMK 62 DP 592650	UNMK (52) DP 9417	ob112	50°34'00"	A DP 9417	0°00'00"	6.61 C		Class B
PEG IV A DP 7461	PEG (68) DP 7461	ob57	140°52'30"	A DP 7461	0°00'00"	51.00 A DP 7461		Class B
PEG (68) DP 7461	PEG IIA DP 7079	ob120	140°51'20"	A DP 7079	0°00'00"	180.23 A DP 7079		Class B
IT 10 DP 592650	POST 69 DP 592650	ob35	59°11'00"	M		65.17 M		
IT 10 DP 592650	POST 70 DP 592650	ob36	302°29'00"	M		39.33 M		

Mark and Vector

Survey Number DP 592650

Meridional Circuit Poverty Bay 2000

From	To	Code	Bearing	Adpt Surv	Bearing Correction	Distance	Adpt Surv	Class
POST 69 DP 592650	PEG 39 DP 592650	ob121	174°21'00"	C		15.83 C		Class B
POST 70 DP 592650	PEG 41 DP 592650	ob122	136°45'20"	C		54.80 C		Class B
IT VII SO 6954	PEG (76) DP 7461	ob20	115°40'00"	A DP 7461	0°00'00"	13.56 A DP 7461		
PEG (76) DP 7461	PEG IA DP 7461	ob131	140°52'30"	A DP 7461	0°00'00"	64.68 A DP 7461		Class B
IS XXIII DP 16669AK	PEG (77) DP 16669AK	ob41	142°38'30"	A DP 16669/A	-0°52'30"	10.06 A DP 16669/A		
PEG (77) DP 16669AK	PEG 80 DP 592650	ob132	230°52'30"	A DP 16669/A	-0°52'30"	5.31 C		Class B
PEG 80 DP 592650	UNMK 86 DP 592650	ob136	230°52'30"	A DP 16669/A	-0°52'30"	69.05 C		Class B
UNMK 86 DP 592650	PEG 78 DP 592650	ob145	230°52'30"	A DP 16669/A	-0°52'30"	12.65 C		Class B
PEG 78 DP 592650	PEG IV DP 16669AK	ob134	230°52'30"	A DP 16669/A	-0°52'30"	25.85 C		Class B
PEG IV DP 16669AK	PEG (76) DP 7461	ob133	230°52'30"	A DP 16669/A	-0°52'30"	99.66 A DP 16669/A		Class B
PEG 80 DP 592650	POST 69 DP 592650	ob137	141°31'40"	C		54.62 C		Class B
IT 10 DP 592650	PEG 80 DP 592650	ob37	16°06'20"	M		79.26 M		
IT 10 DP 592650	PEG 78 DP 592650	ob38	300°43'00"	M		48.17 M		
IT 10 DP 592650	PEG 64 DP 592650	ob39	84°59'00"	M		36.62 M		
PEG 78 DP 592650	POST 70 DP 592650	ob135	112°56'00"	C		8.94 C		Class B
UNMK 71 DP 592650	UNMK 72 DP 592650	ob124	140°34'00"	A DP 9417	0°00'00"	3.01 C		Class B
UNMK 72 DP 592650	UNMK 73 DP 592650	ob126	140°34'00"	A DP 9417	0°00'00"	1.68 C		Class B
UNMK 73 DP 592650	UNMK 62 DP 592650	ob127	50°34'00"	A DP 9417	0°00'00"	0.88 C		Class B
UNMK (63) DP 9417	UNMK 66 DP 592650	ob114	82°08'00"	C		0.43 C		Class B
PEG VIA DP 7079	PEG 64 DP 592650	ob75	322°56'00"	C		299.01 C		Class B
UNMK 75 DP 592650	PEG 42 DP 592650	ob130	95°38'00"	C		19.65 C		Class B
UNMK 40 DP 592650	UNMK 82 DP 592650	ob86	142°56'00"	C		298.81 C		Class B
UNMK 82 DP 592650	UNMK 83 DP 592650	ob140	140°34'00"	C		195.31 C		Class B
UNMK 83 DP 592650	UNMK 84 DP 592650	ob141	95°38'00"	C		19.51 C		Class B

Mark and Vector

Survey Number DP 592650

Meridional Circuit Poverty Bay 2000

From	To	Code	Bearing	Adpt Surv	Bearing Correction	Distance	Adpt Surv	Class
UNMK 84 DP 592650	UNMK 81 DP 592650	ob142	136°02'40"	C		1.35 C		Class B
UNMK 81 DP 592650	UNMK 74 DP 592650	ob139	136°02'40"	C		9.94 C		Class B
UNMK 85 DP 592650	UNMK 86 DP 592650	ob144	316°45'20"	C		63.47 C		Class B
IS XXIII DP 16669AK	PEG (87) DP 2973	ob42	50°52'30"	A DP 16669/A	-0°52'30"	313.12 A DP 16669/A		
PEG (87) DP 2973	PEG X DP 16669AK	ob146	50°52'30"	A DP 16669/A	-0°52'30"	87.63 A DP 16669/A		
PEG X DP 16669AK	PEG XI DP 16669AK	ob147	140°52'30"	A DP 16669/A	-0°52'30"	10.06 A DP 16669/A		
PEG XI DP 16669AK	PEG XII DP 16669AK	ob148	157°27'30"	A DP 16669/A	-0°52'30"	136.51 A DP 16669/A		
PEG XII DP 16669AK	PEG XIII DP 16669AK	ob151	140°39'30"	A DP 16669/A	-0°52'30"	59.28 A DP 16669/A		
UNMK (108) DP 16669AK	PEG XV DP 16669AK	ob173	170°22'30"	A DP 16669/A	-0°52'30"	63.98 A DP 16669/A		
PEG XV DP 16669AK	PEG XVI DP 16669AK	ob154	146°30'30"	A DP 16669/A	-0°52'30"	54.07 A DP 16669/A		
PEG XVI DP 16669AK	PEG IIB DP 7079	ob155	230°52'30"	A DP 16669/A	-0°52'30"	500.39 A DP 16669/A		
IS (27) DP 7079	PEG VI DP 16696AK	ob66	58°13'30"	A DP 16669/A	-0°52'30"	100.58 A DP 16669/A		
PEG VI DP 16696AK	IS XXIII DP 16669AK	ob157	321°20'30"	A DP 16669/A	-0°52'30"	191.87 A DP 16669/A		
PEG VI DP 16696AK	PEG XVII DP 16669AK	ob158	49°32'30"	A DP 16669/A	-0°52'30"	153.09 A DP 16669/A		
PEG XVII DP 16669AK	PEG XIII DP 16669AK	ob159	54°07'30"	A DP 16669/A	-0°52'30"	210.92 A DP 16669/A		
PEG XVI DP 16669AK	PEG (96) DP 1951AK	ob156	50°52'30"	A DP 16669/A	-0°52'30"	34.72 A DP 16669/A		
PEG XIII DP 16669AK	PEG XIV DP 16669AK	ob153	231°57'30"	A DP 16669/A	-0°52'30"	33.17 A DP 16669/A		
PEG XIV DP 16669AK	PEG (68) DP 7461	ob161	231°42'30"	A DP 16669/A	-0°52'30"	541.79 A DP 16669/A		
PEG XIV DP 16669AK	UNMK (107) DP 16669AK	ob162	51°42'30"	A DP 16669/A	-0°52'30"	1.01 A DP 16669/A		
PEG XI DP 16669AK	UNMK (98) DP 16669AK	ob149	174°10'30"	A DP 16669/A	-0°52'30"	21.00 A DP 16669/A		Class B
UNMK (98) DP 16669AK	UNMK (99) DP 16669AK	ob163	165°58'30"	A DP 16669/A	-0°52'30"	20.34 A DP 16669/A		Class B
UNMK (99) DP 16669AK	UNMK (100) DP 16669AK	ob164	157°27'30"	A DP 16669/A	-0°52'30"	20.12 A DP 16669/A		Class B
UNMK (100) DP 16669AK	UNMK (101) DP 16669AK	ob165	160°21'30"	A DP 16669/A	-0°52'30"	20.14 A DP 16669/A		Class B
UNMK (101) DP 16669AK	UNMK (102) DP 16669AK	ob166	168°46'30"	A DP 16669/A	-0°52'30"	20.50 A DP 16669/A		Class B

Mark and Vector

Survey Number DP 592650

Meridional Circuit Poverty Bay 2000

From	To	Code	Bearing	Adpt Surv	Bearing Correction	Distance	Adpt Surv	Class
UNMK (102) DP 16669AK	UNMK (103) DP 16669AK	ob167	171°29'30"	A DP 16669/A	-0°52'30"	20.74 A	DP 16669/A	Class B
UNMK (103) DP 16669AK	UNMK (104) DP 16669AK	ob168	153°43'30"	A DP 16669/A	-0°52'30"	18.49 A	DP 16669/A	Class B
UNMK (104) DP 16669AK	UNMK (105) DP 16669AK	ob169	143°40'30"	A DP 16669/A	-0°52'30"	22.79 A	DP 16669/A	Class B
UNMK (105) DP 16669AK	UNMK (106) DP 16669AK	ob170	150°18'30"	A DP 16669/A	-0°52'30"	20.42 A	DP 16669/A	Class B
UNMK (106) DP 16669AK	UNMK (107) DP 16669AK	ob171	168°21'30"	A DP 16669/A	-0°52'30"	20.68 A	DP 16669/A	Class B
UNMK (107) DP 16669AK	UNMK (108) DP 16669AK	ob172	145°32'50"	C		67.37 C		Class B
UNMK (108) DP 16669AK	UNMK 109 DP 592650	ob174	145°32'50"	C		21.63 C		Class B
UNMK 109 DP 592650	PEG (96) DP 1951AK	ob175	141°05'30"	C		87.92 C		Class B
PEG XI DP 16669AK	PEG (77) DP 16669AK	ob150	230°52'30"	A DP 16669/A	-0°52'30"	401.05 A	DP 16669/A	Class B
PEG IVB DP 7079	PEG (110) DP 1951AK	ob72	50°52'30"	A DP 1951/AK	-0°52'30"	529.07 A	DP 1951/AK	Class B
UNMK 115 DP 592650	UNMK 116 DP 592650	ob176	150°48'00"	C		29.80 C		
UNMK 116 DP 592650	UNMK 117 DP 592650	ob177	150°58'00"	C		16.60 C		
UNMK 117 DP 592650	UNMK 118 DP 592650	ob178	143°43'00"	C		25.09 C		
UNMK 118 DP 592650	UNMK 119 DP 592650	ob179	130°43'00"	C		31.07 C		
UNMK 119 DP 592650	UNMK 120 DP 592650	ob180	140°53'00"	C		11.91 C		
UNMK 120 DP 592650	IT I SO 6954	ob181	315°38'30"	M		365.92 M		
IT I SO 6954	UNMK 115 DP 592650	ob11	132°27'10"	M		253.88 M		
IT I SO 6954	UNMK 116 DP 592650	ob12	134°21'20"	M		282.32 M		
IT I SO 6954	UNMK 117 DP 592650	ob13	135°16'10"	M		298.26 M		
IT I SO 6954	UNMK 118 DP 592650	ob14	135°55'20"	M		323.10 M		
IT I SO 6954	UNMK 119 DP 592650	ob15	135°28'00"	M		354.06 M		
IT X DP 7079	PEG 57 DP 592650	ob30	322°42'20"	M		81.64 M		
IT VII DP 7079	PEG 42 DP 592650	ob32	138°35'40"	M		142.36 M		
PEG (96) DP 1951AK	UNMK 123 DP 592650	ob160	141°33'00"	C		89.81 C		Class A

Mark and Vector

Survey Number DP 592650

Meridional Circuit Poverty Bay 2000

From	To	Code	Bearing	Adpt Surv	Bearing Correction	Distance	Adpt Surv	Class
UNMK 123 DP 592650	UNMK 124 DP 592650	ob182	109°16'20"	C		31.50 C		Class B
UNMK 124 DP 592650	UNMK 125 DP 592650	ob183	140°33'20"	C		67.36 C		Class B
UNMK 125 DP 592650	UNMK 126 DP 592650	ob184	183°36'20"	C		27.89 C		Class B
UNMK 126 DP 592650	UNMK 127 DP 592650	ob185	166°39'00"	C		19.41 C		Class B
UNMK 127 DP 592650	UNMK 128 DP 592650	ob186	186°10'00"	C		23.56 C		Class B
UNMK 128 DP 592650	UNMK 129 DP 592650	ob187	157°05'50"	C		23.32 C		Class B
UNMK 129 DP 592650	UNMK 130 DP 592650	ob188	124°01'00"	C		24.58 C		Class B
UNMK 130 DP 592650	UNMK 131 DP 592650	ob189	161°16'00"	C		15.30 C		Class B
UNMK 131 DP 592650	UNMK 132 DP 592650	ob190	138°06'10"	C		22.16 C		Class B
UNMK 132 DP 592650	UNMK 133 DP 592650	ob191	117°17'30"	C		23.65 C		Class B
UNMK 133 DP 592650	UNMK 134 DP 592650	ob192	135°54'20"	C		33.49 C		Class B
UNMK 134 DP 592650	PEG (110) DP 1951AK	ob193	109°41'00"	C		26.13 C		Class B
EDM BASE MARK 7 SO 7817	EDM BASE MARK 5 SO 7817	ob0	320°50'00"	M		767.51 M		
EDM BASE MARK 7 SO 7817	TABLELANDS ROAD	ob1	105°05'02"	A DP 436650	0°00'00"	3,652.90 A DP 436650		
TABLELANDS ROAD	IT 1 DP 436650	ob195	200°47'35"	A DP 436650	0°00'00"	1,018.44 A DP 436650		
IT 1 DP 436650	EDM BASE MARK 7 SO 7817	ob196	301°00'33"	A DP 436650	0°00'00"	3,693.34 A DP 436650		
EDM BASE MARK 5 SO 7817	IT 10 DP 592650	ob194	137°08'55"	M		3,656.46 M		
IT 1 DP 436650	IT I DP 321869	ob197	114°00'00"	A DP 436650	0°00'00"	407.84 A DP 436650		
IT V DP 321869	IT I DP 321869	ob199	46°24'30"	A DP 321869	0°00'00"	567.45 A DP 321869		
IT IV DP 321869	IT V DP 321869	ob200	148°50'20"	A DP 321869	0°00'00"	131.03 A DP 321869		
IT III DP 321869	IT IV DP 321869	ob201	133°01'40"	A DP 321869	0°00'00"	135.31 A DP 321869		
IT III DP 321869	IS II DP 321869	ob202	77°22'00"	A DP 321869	0°00'00"	168.02 A DP 321869		
IT IC DP 321869	IT VIII SO 5615	ob204	250°18'30"	A DP 321869	0°00'00"	9.96 A DP 321869		
IT IC DP 436650	IT IC DP 321869	ob205	265°01'00"	A DP 436650	0°00'00"	0.07 A DP 436650		
IT 1 DP 436650	IT IC DP 436650	ob198	154°22'15"	A DP 436650	0°00'00"	283.28 A DP 436650		
IS II DP 321869	IT VIII SO 5615	ob203	69°39'00"	A DP 321869	0°00'00"	164.53 A DP 321869		

Mark and Vector

Survey Number DP 592650

Meridional Circuit Poverty Bay 2000

From	To	Code	Bearing	Adpt Surv	Bearing Correction	Distance	Adpt Surv	Class
PEG XIII DP 16669AK	UNMK (108) DP 16669AK	ob152	170°22'30" A	DP 16669/A	-0°52'30"	76.44 A	DP 16669/A	

Mark Name	Mark Condition	Description
EDM BASE MARK 5 S		In Berm 2.1 off seal D0.45
EDM BASE MARK 7 S		In berm SW side road 1.4 off seal D0.5
IT 10 DP 592650		1.0 NW fce 2.2 from post D0.3
IT I SO 6954		2.2 NW fce 4.0 from trough D0.3
IT III DP 7079		1.4 NE seal D0.2
IT IV DP 7079		1.3 NE seal D0.3
IT VII DP 7079		8.5 NE fce D0.3
IT VIII DP 7884		1.5 NE seal D0.2
IT X DP 7079		In paddock D0.2
PEG 39 DP 592650		SW side fce
PEG 41 DP 592650		E side fce
PEG 42 DP 592650		6.8 N post
PEG 55 DP 592650		0.6 SW Fce IP
PEG 56 DP 592650		2.3 SE ang post
PEG 57 DP 592650		2.5 SE fce
PEG 78 DP 592650		0.1 SW Fce
PEG 80 DP 592650		In Fce
POST 69 DP 592650		Disc on post
POST 70 DP 592650		Disc on post

*** End of Report ***

Schedule / Memorandum

Land Registration District

Gisborne

Plan Number

DP 592650

Territorial Authority (the Council)

Opotiki District Council

TA Reference

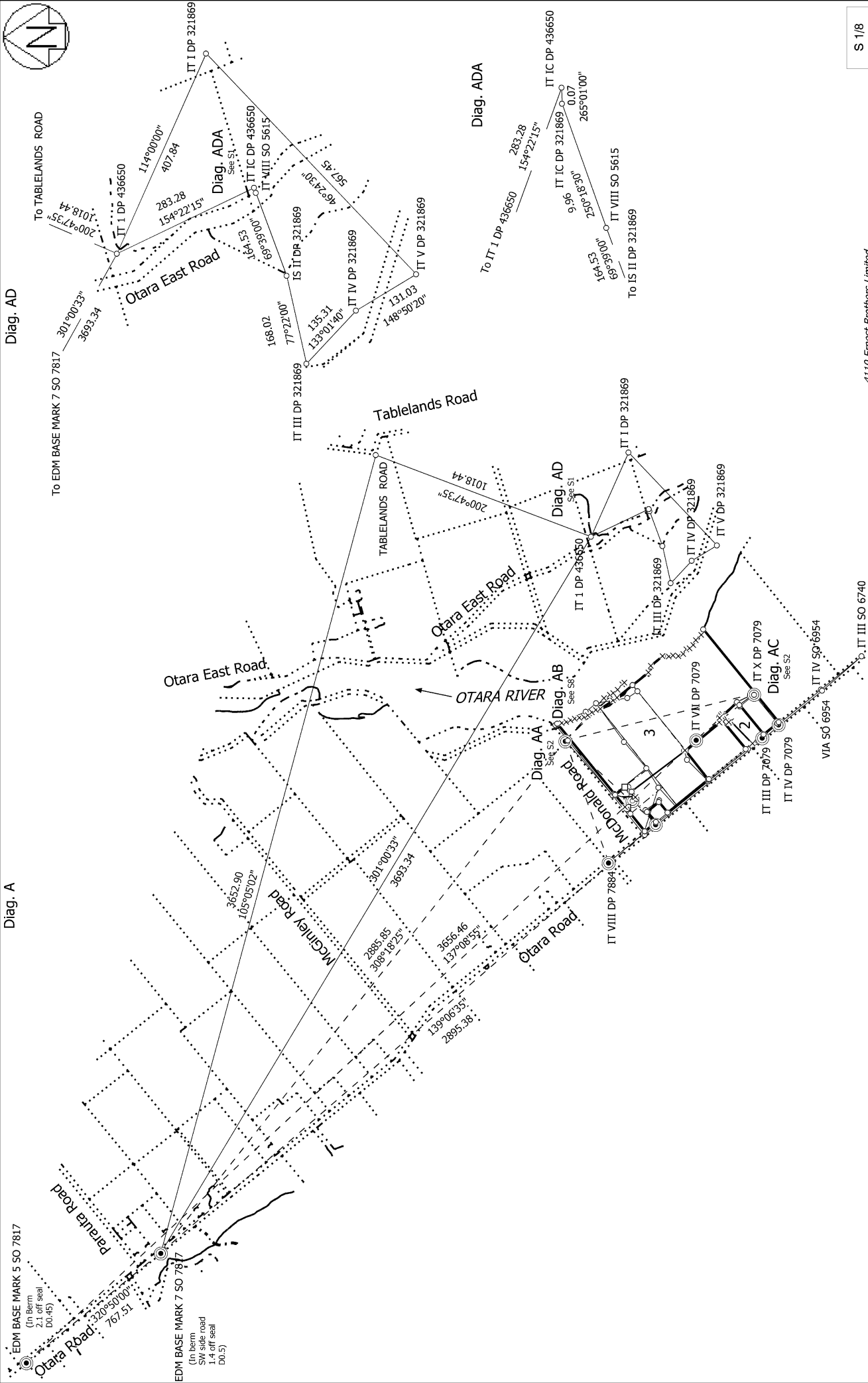
RC2023-07/A304653 (4110 Ernest)

Memorandum of Easements (Pursuant to Section 243 Resource Management Act 1991)			
Purpose	Shown	Burdened Land (Servient Tenement)	Benefited Land (Dominant Tenement)
Right of Way Right to Convey: Electricity & Telecommunications	A on DP 592650	Lot 1 on DP 592650	Lot 3 on DP 592650
Right to Convey: Water	B, C & on DP 592650	Lot 3 on DP 592650	Lot 1 on DP 592650
	C on DP 592650	Lot 3 on DP 592650	Lot 2 on DP 592650
Right to Convey Electricity	D & EA on DP 592650	Lot 2 on DP 592650	Lots 1 & 3 on DP 592650
	C on DP 592650	Lot 3 on DP 592650	Lots 1 & 2 on DP 592650

Schedule of Existing Easements			
Purpose	Shown	Burdened Land (Servient Tenement)	Document
Right to Take & Convey Water	C on DP 592650	Lot 3 on DP 592650	EC 223232.3
	E & EA on DP 592650	Lot 2 on DP 592650	EC 223232.3

Notes:

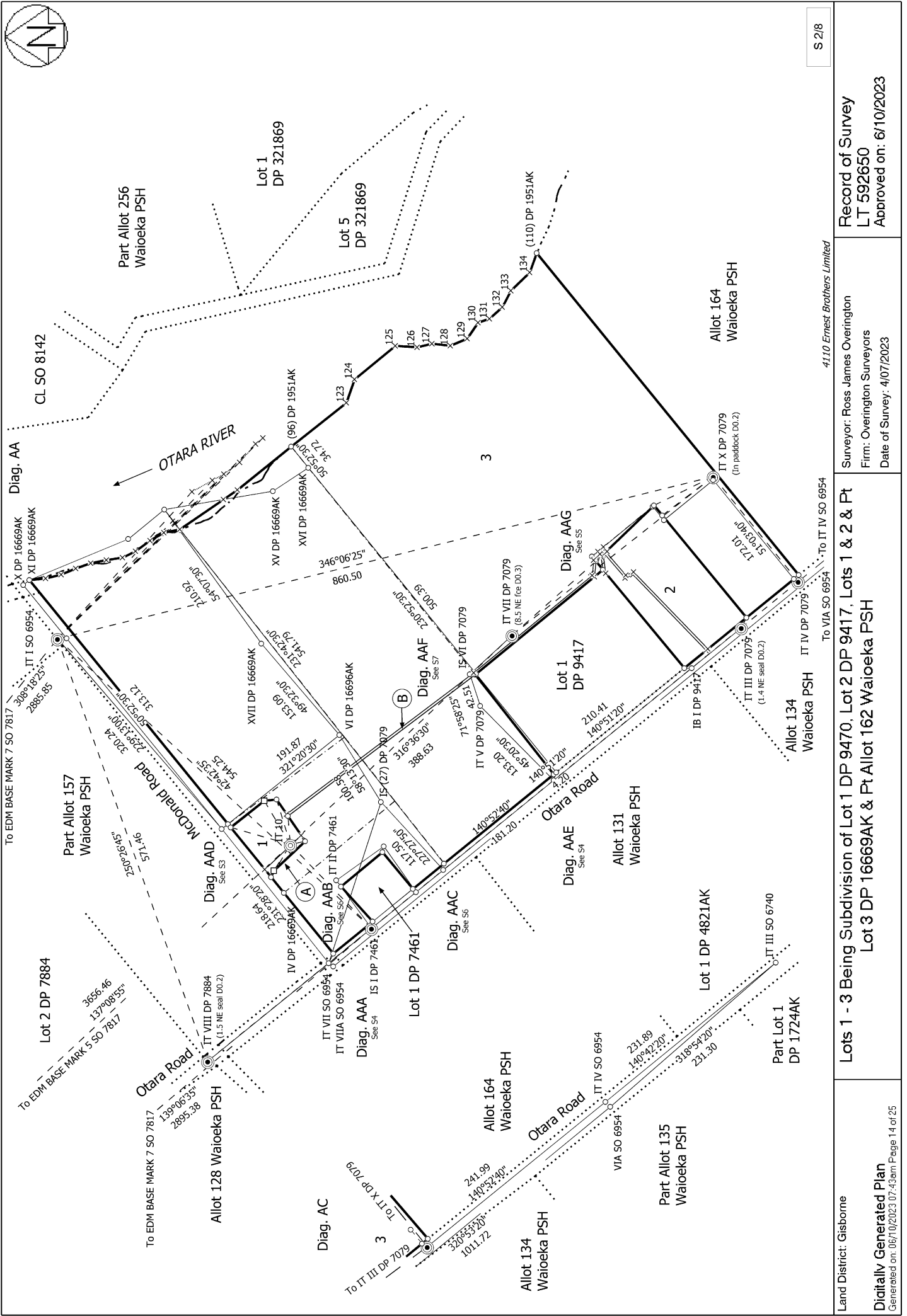
- Allotment 431 Wairoeka Parish (RT GS5A/1016) and Allotment 161 Wairoeka Parish (RT GS4A/1481) are to be held in the same record of title (see LINZ Request 1811103).
- Lots 1 & 2 DP 592650 are to be subject to a consent notice addressing reverse sensitivity.



S 1/8

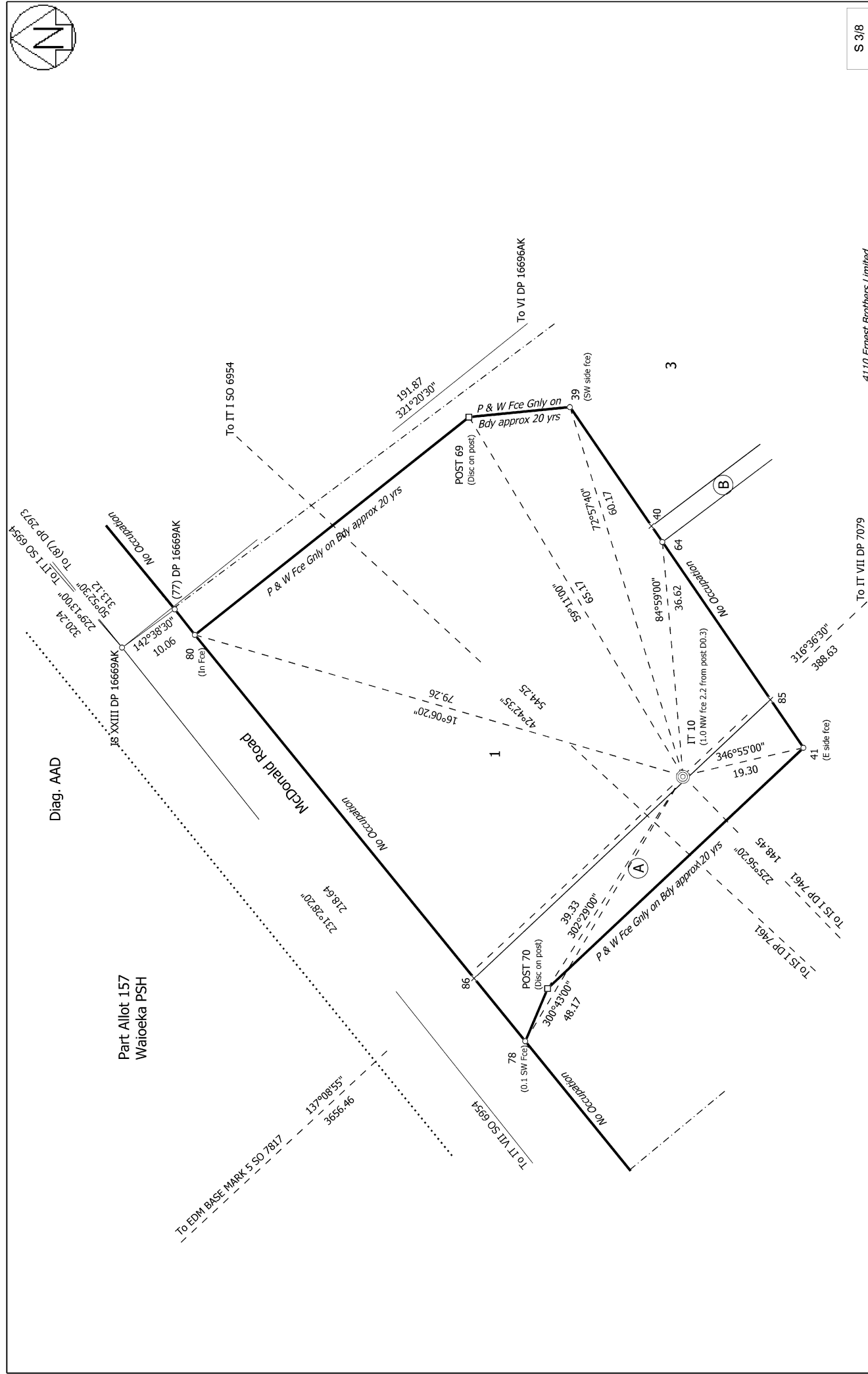
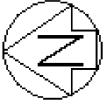
<p>Land District: Gisborne</p> <p>Digitally Generated Plan</p> <p><small>Generated on: 06/10/2023 07:43am Page 13 of 25</small></p>	<p>Lots 1 - 3 Being Subdivision of Lot 1 DP 9470, Lot 2 DP 9417, Lots 1 & 2 & Pt Lot 3 DP 16669AK & Pt Allot 162 Waioeka PSH</p>	<p>Surveyor: Ross James Overington</p> <p>Firm: Overington Surveyors</p> <p>Date of Survey: 4/07/2023</p>	<p>Record of Survey</p> <p>LT 592650</p> <p>Approved on: 6/10/2023</p>
--	---	---	---

4110 Ernest Brothers Limited



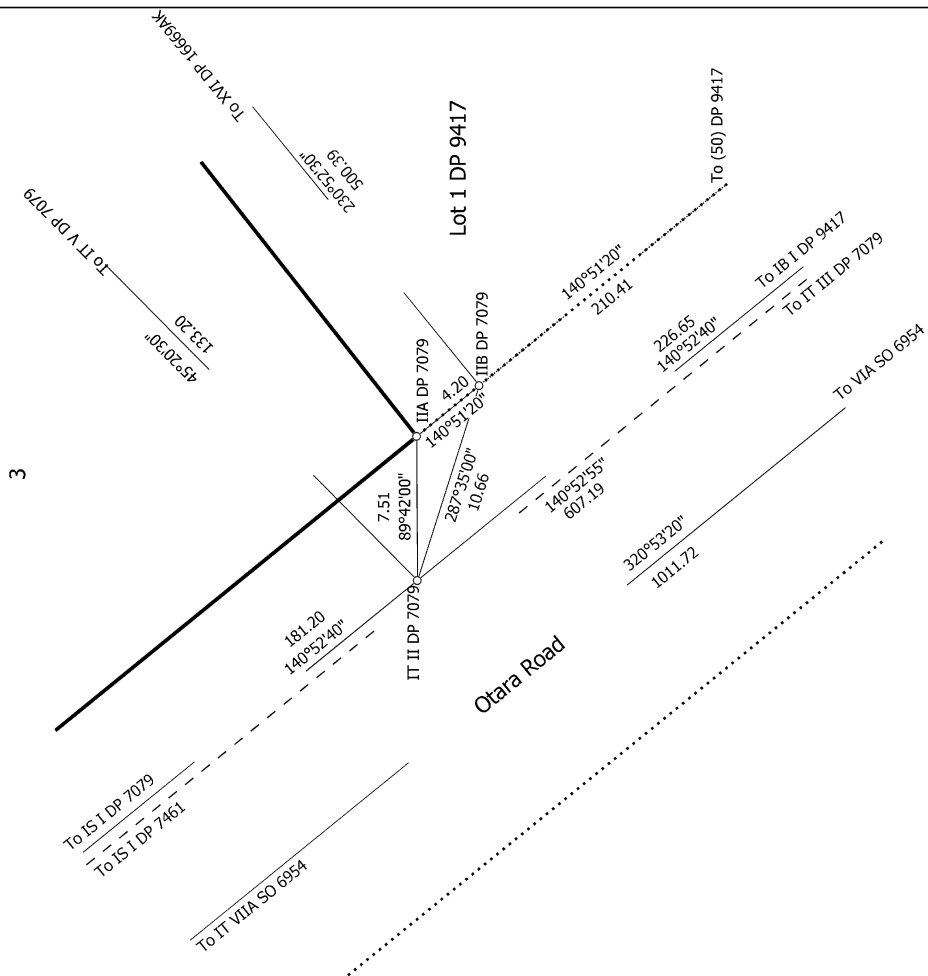
<p>Land District: Gisborne</p> <p>Digitally Generated Plan</p> <p>Generated on: 06/10/2023 07:43am Page 14 of 25</p>	<p>Lots 1 - 3 Being Subdivision of Lot 1 DP 9470, Lot 2 DP 9417, Lots 1 & 2 & Pt Lot 3 DP 16669AK & Pt Allot 162 Waioeka PSH</p>	<p>Surveyor: Ross James Overington</p> <p>Firm: Overington Surveyors</p> <p>Date of Survey: 4/07/2023</p>	<p>Record of Survey</p> <p>LT 592650</p> <p>Approved on: 6/10/2023</p>
---	---	---	--

4110 Ernest Brothers Limited

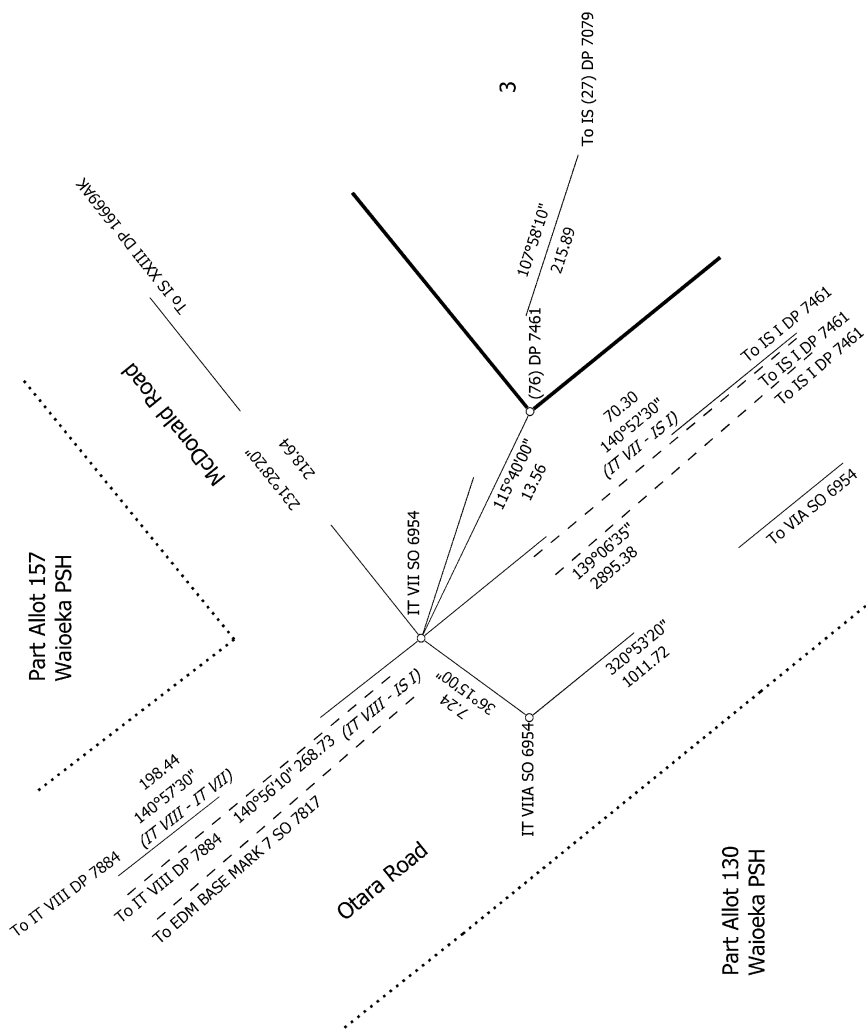




Diag. AAE



Diag. AAA



Part Allot 157
Waioeka PSH

Otara Road

Part Allot 130
Waioeka PSH

S 4/8

4110 Ernest Brothers Limited

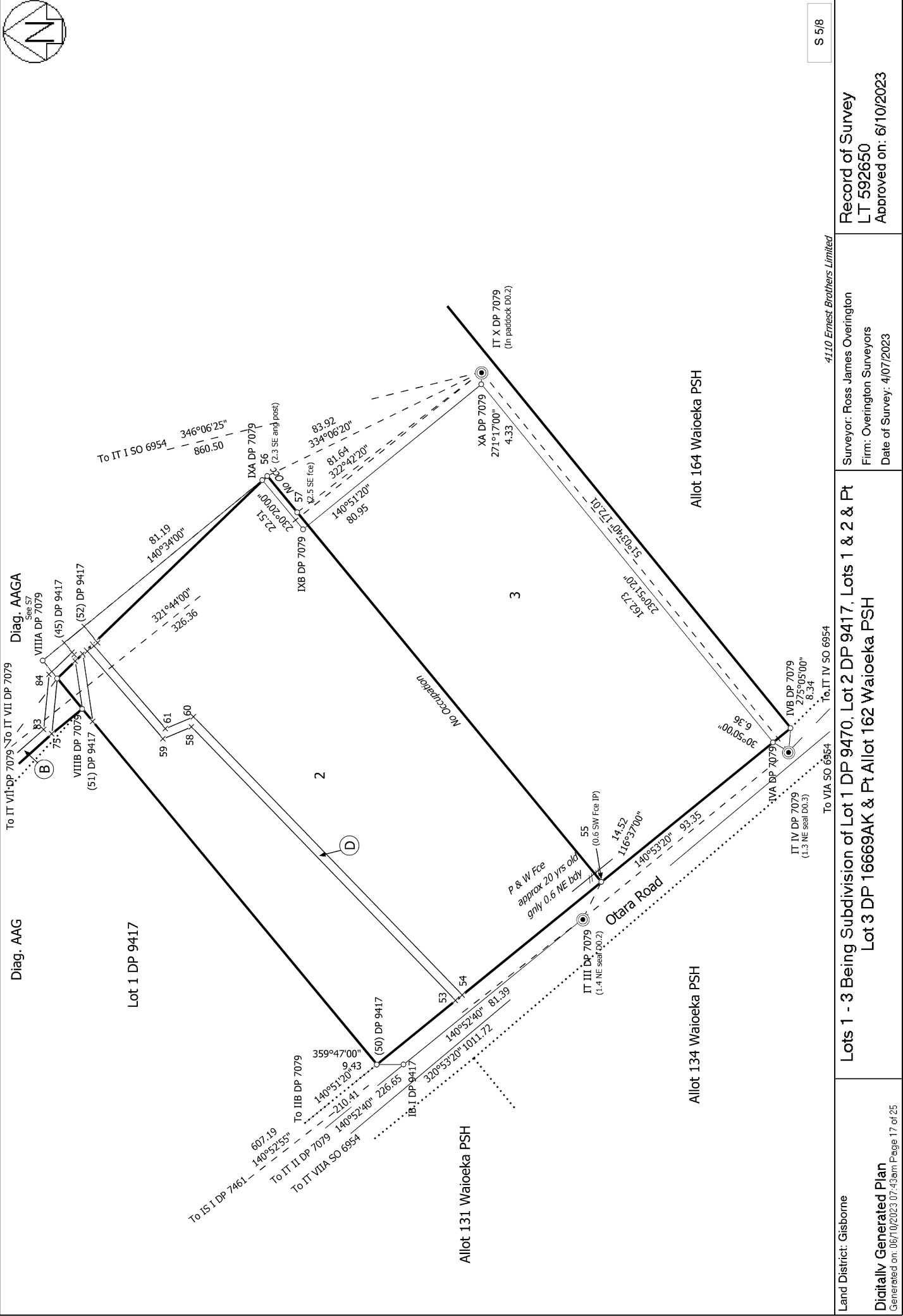
Land District: Gisborne

Lots 1 - 3 Being Subdivision of Lot 1 DP 9470, Lot 2 DP 9417, Lots 1 & 2 & Pt Lot 3 DP 16669AK & Pt Allot 162 Waioeka PSH

Surveyor: Ross James Overington
Firm: Overington Surveyors
Date of Survey: 4/07/2023

Record of Survey
LT 592650
Approved on: 6/10/2023

Digitally Generated Plan
Generated on: 06/10/2023 07:43am | Page 16 of 25



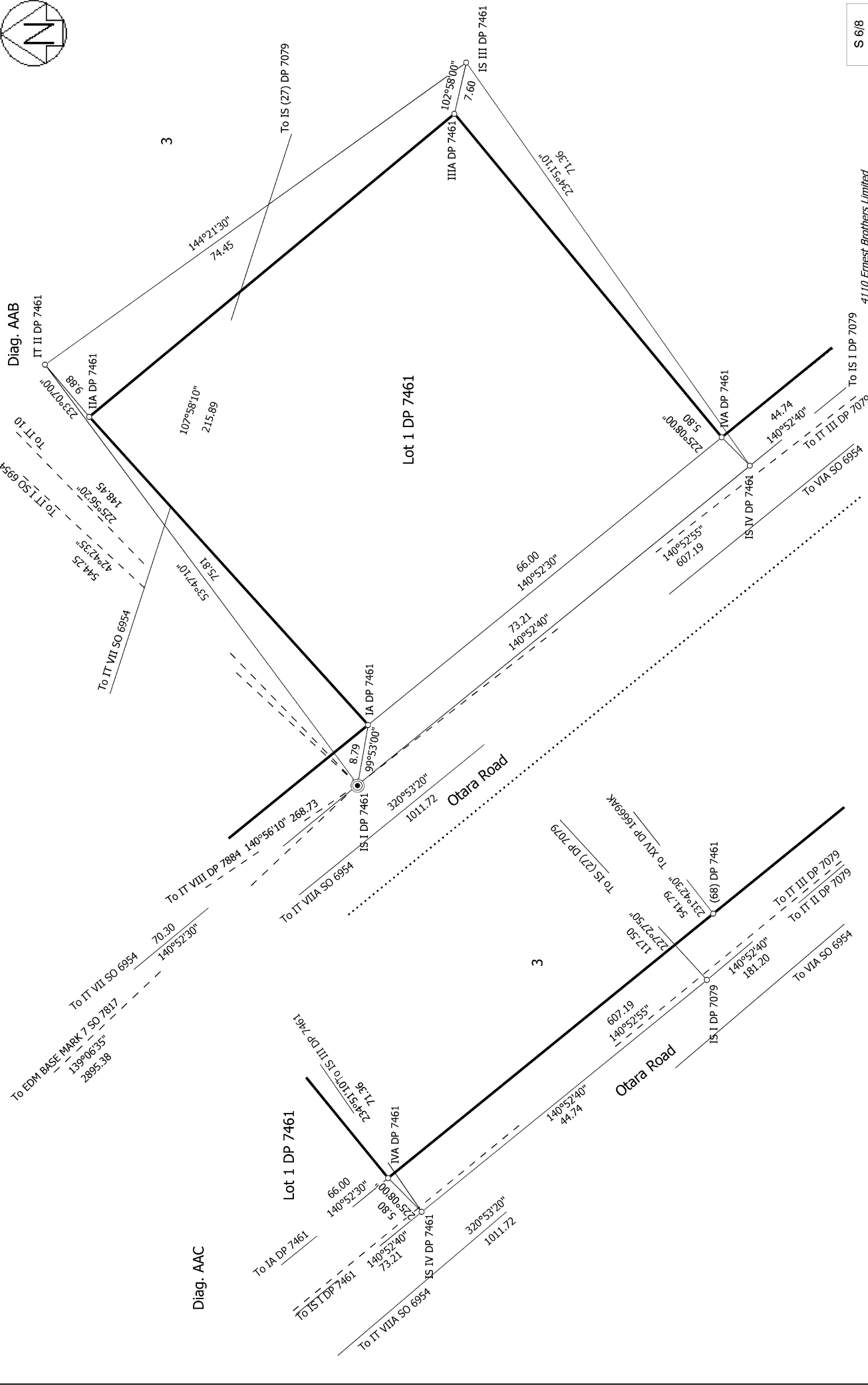
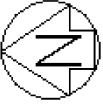
S 5/8

Land District: Gisborne
Digitally Generated Plan
Generated on: 06/10/2023 07:43am Page 17 of 25

Lots 1 - 3 Being Subdivision of Lot 1 DP 9470, Lot 2 DP 9417, Lots 1 & 2 & Pt Lot 3 DP 16669AK & Pt Allot 162 Waioeka PSH

4110 Ernest Brothers Limited
Surveyor: Ross James Overington
Firm: Overington Surveyors
Date of Survey: 4/07/2023

Record of Survey
LT 592650
Approved on: 6/10/2023



S 6/8

Record of Survey
 LT 592650
 Approved on: 6/10/2023

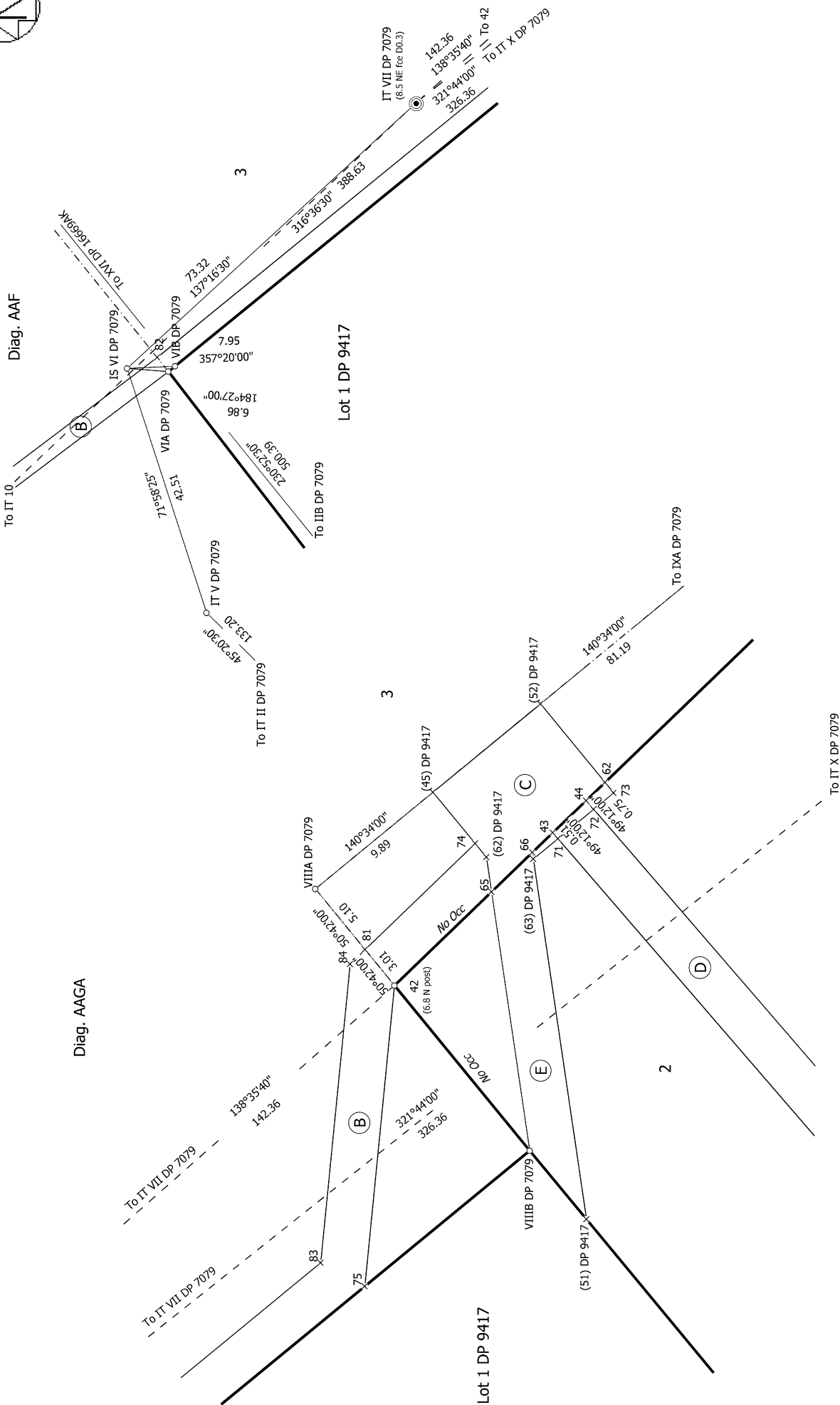
Surveyor: Ross James Overington
 Firm: Overington Surveyors
 Date of Survey: 4/07/2023

4110 Ernest Brothers Limited

Lots 1 - 3 Being Subdivision of Lot 1 DP 9470, Lot 2 DP 9417, Lots 1 & 2 & Pt Lot 3 DP 16669AK & Pt Allot 162 Waioeka PSH

Land District: Gisborne

Digitally Generated Plan
 Generated on: 06/10/2023 07:43am Page 18 of 25



S 7/8

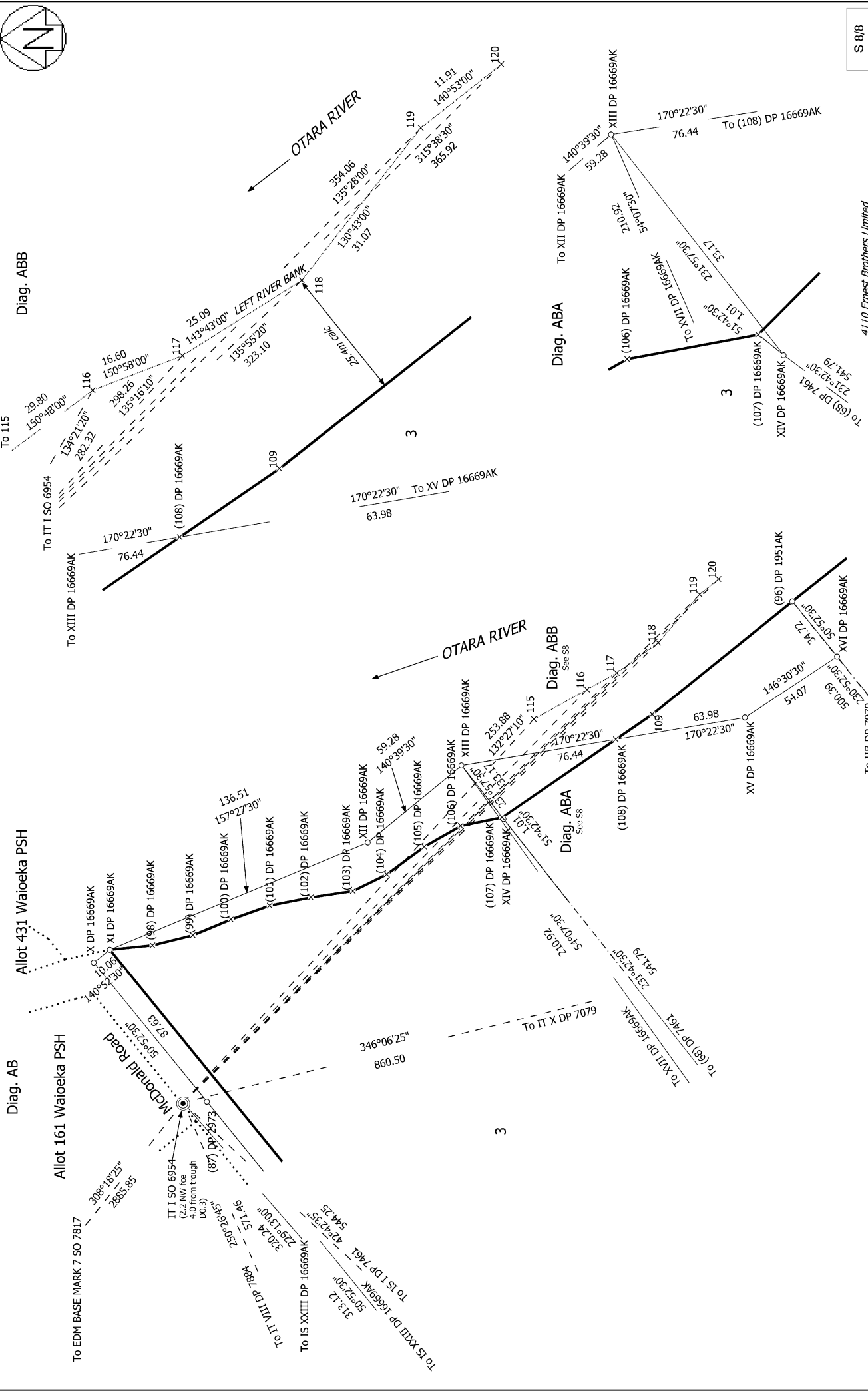
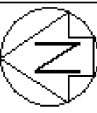
4110 Ernest Brothers Limited

Record of Survey
 LT 592650
 Approved on: 6/10/2023

Surveyor: Ross James Overington
 Firm: Overington Surveyors
 Date of Survey: 4/07/2023

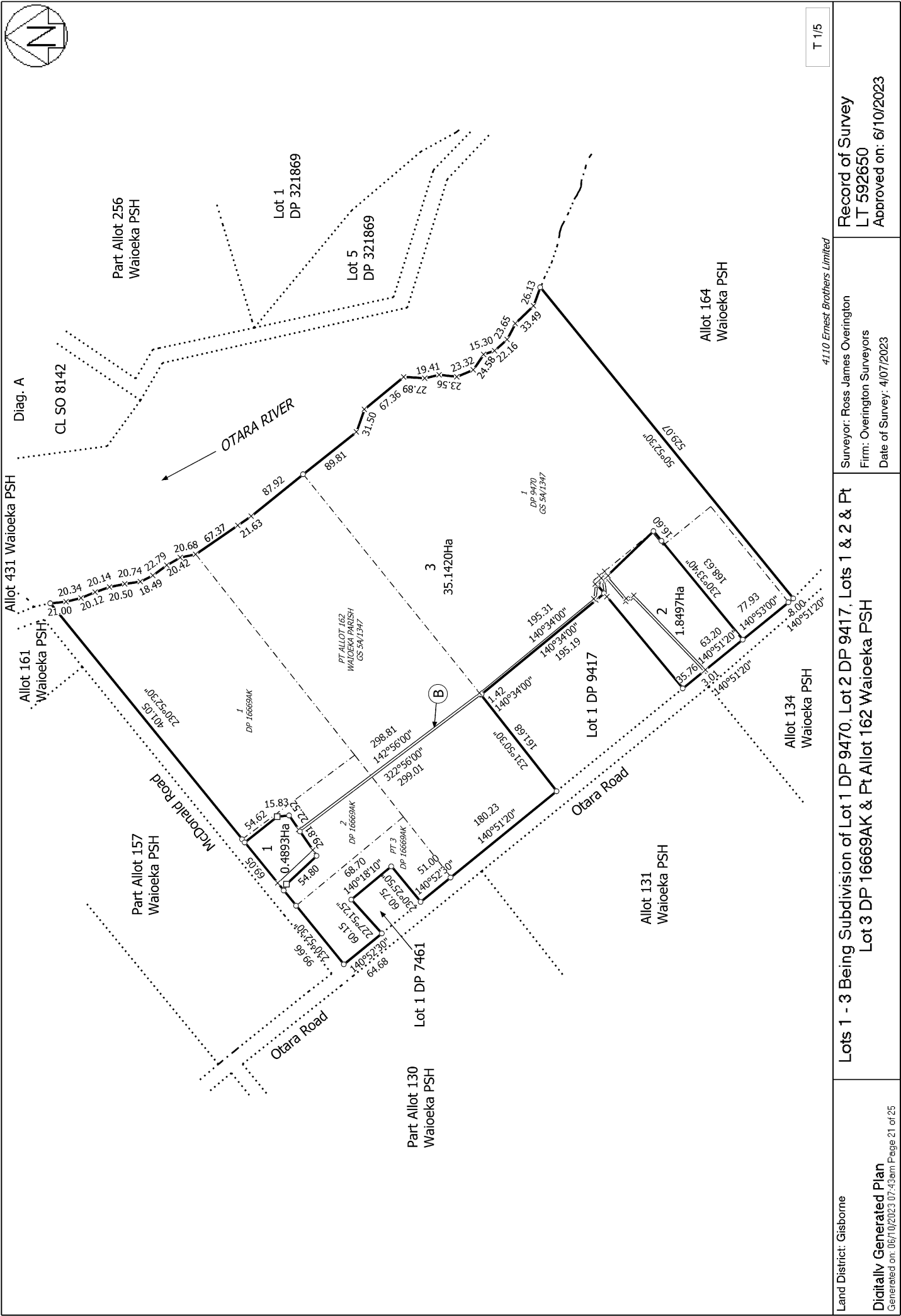
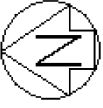
Lots 1 - 3 Being Subdivision of Lot 1 DP 9470, Lot 2 DP 9417, Lots 1 & 2 & Pt
 Lot 3 DP 16669AK & Pt Allot 162 Waioeka PSH

Land District: Gisborne
 Digitally Generated Plan
 Generated on: 06/10/2023 07:43am Page 19 of 25



41.10 Ernest Brothers Limited

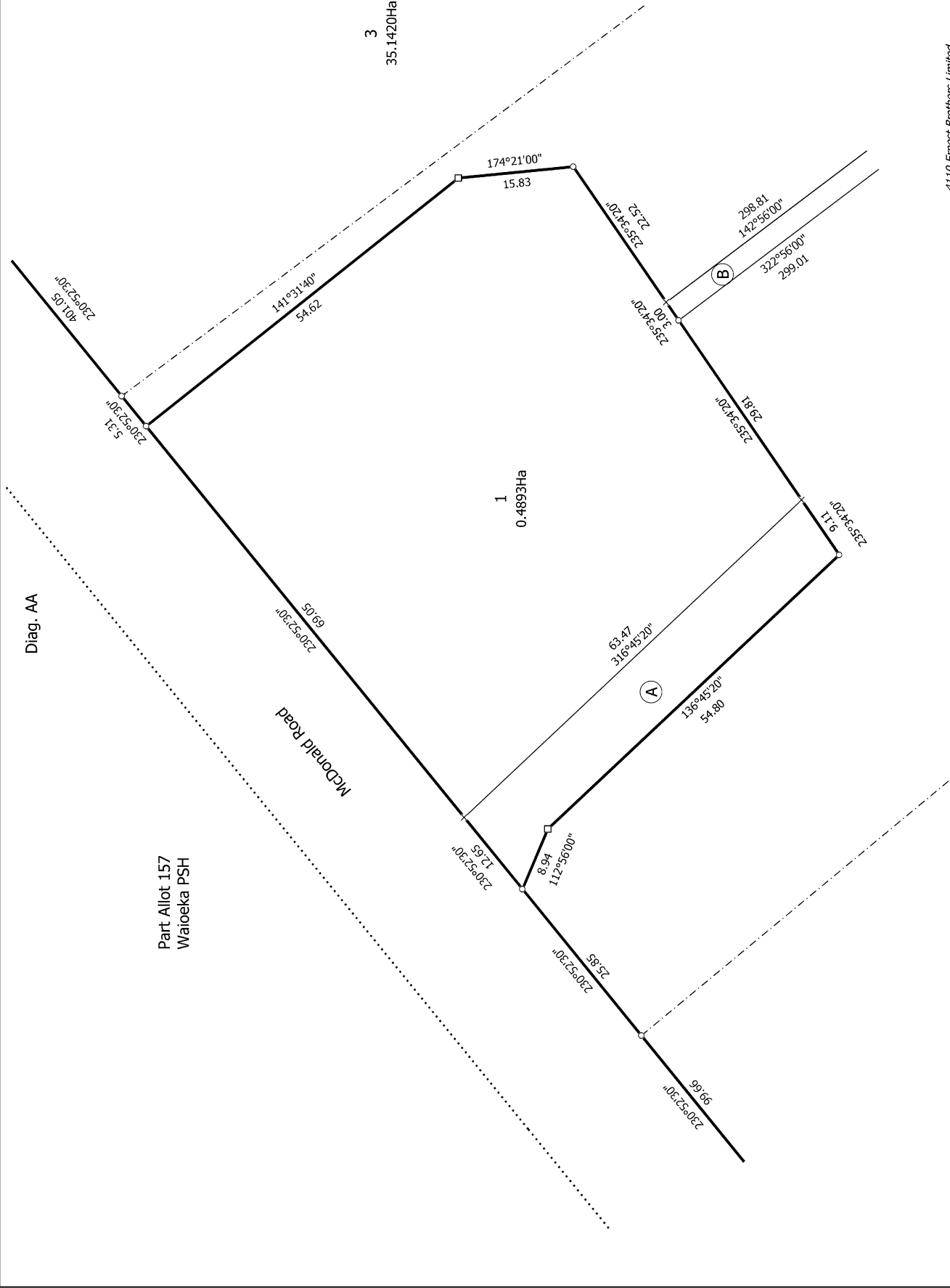
<p>Land District: Gisborne</p> <p>Digitally Generated Plan</p> <p>Generated on: 06/10/2023 07:43am Page 20 of 25</p>	<p>Lots 1 - 3 Being Subdivision of Lot 1 DP 9470, Lot 2 DP 9417, Lots 1 & 2 & Pt Lot 3 DP 16669AK & Pt Allot 162 Waioeka PSH</p>	<p>Surveyor: Ross James Overington</p> <p>Firm: Overington Surveyors</p> <p>Date of Survey: 4/07/2023</p>	<p>Record of Survey</p> <p>LT 592650</p> <p>Approved on: 6/10/2023</p>
---	---	---	--



T 1/5

4110 Ernest Brothers Limited

<p>Land District: Gisborne</p> <p>Digitally Generated Plan</p> <p>Generated on: 06/10/2023 07:43am Page 21 of 25</p>	<p>Lots 1 - 3 Being Subdivision of Lot 1 DP 9470, Lot 2 DP 9417, Lots 1 & 2 & Pt Lot 3 DP 16669AK & Pt Allot 162 Waioeka PSH</p>	<p>Record of Survey LT 592650 Approved on: 6/10/2023</p>
<p>Surveyor: Ross James Overington Firm: Overington Surveyors Date of Survey: 4/07/2023</p>		



T 2/5

4110 Ernest Brothers Limited

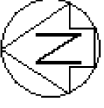
Record of Survey
 LT 592650
 Approved on: 6/10/2023

Surveyor: Ross James Overington
 Firm: Overington Surveyors
 Date of Survey: 4/07/2023

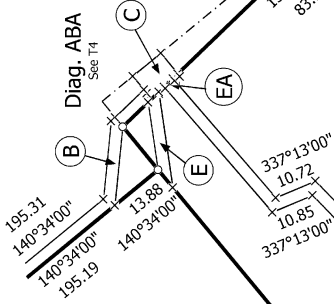
Land District: Gisborne

Digitally Generated Plan
 Generated on: 06/10/2023 07:43am | Page 22 of 25

**Lots 1 - 3 Being Subdivision of Lot 1 DP 9470, Lot 2 DP 9417, Lots 1 & 2 & Pt
 Lot 3 DP 16669AK & Pt Allot 162 Waioteka PSH**



Diag. AB



Lot 1
DP 9417

3
35.1420Ha

1
DP 9470
GS 54/1347

16.00
230°33'40"

2
1.8497Ha

2
DP 9417
GS 60/671

Allot 131
Waioteka PSH

140°51'20"
35.76
3.01
140°51'20"

230°33'40"
158.63

Otara Road

Allot 164
Waioteka PSH

50°23'00"
559.07

140°53'00"
77.93

Allot 134
Waioteka PSH

8.00
140°51'20"

T 3/5

4110 Ernest Brothers Limited

Land District: Gisborne

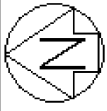
Digitally Generated Plan

Generated on: 06/10/2023 07:43am | Page 23 of 25

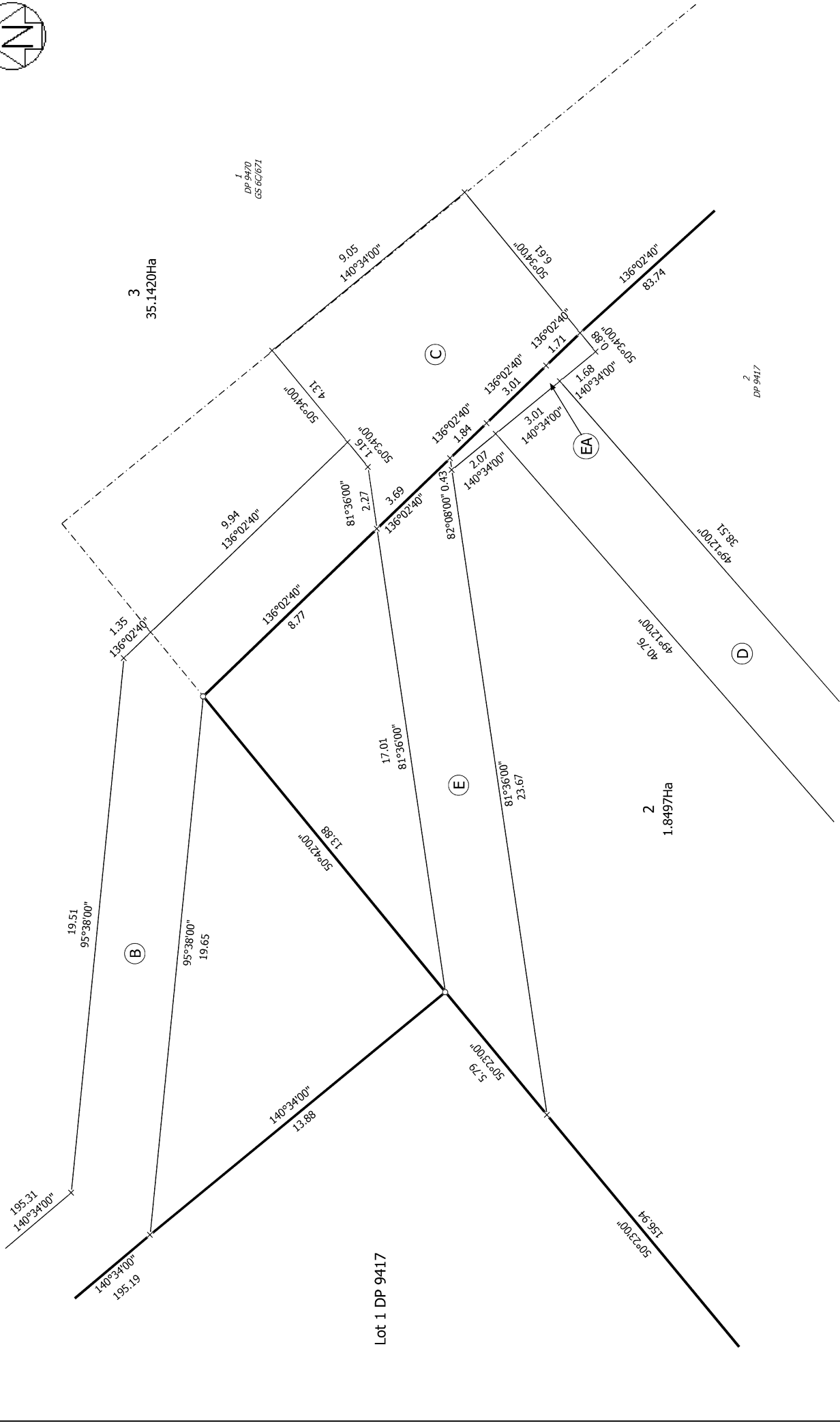
**Lots 1 - 3 Being Subdivision of Lot 1 DP 9470, Lot 2 DP 9417, Lots 1 & 2 & Pt
Lot 3 DP 16669AK & Pt Allot 162 Waioteka PSH**

Surveyor: Ross James Overington
Firm: Overington Surveyors
Date of Survey: 4/07/2023

Record of Survey
LT 592650
Approved on: 6/10/2023



Diag. ABA



T 4/5

4110 Ernest Brothers Limited

Record of Survey
 LT 592650
 Approved on: 6/10/2023

Surveyor: Ross James Overington
 Firm: Overington Surveyors
 Date of Survey: 4/07/2023

Lots 1 - 3 Being Subdivision of Lot 1 DP 9470, Lot 2 DP 9417, Lots 1 & 2 & Pt
 Lot 3 DP 16669AK & Pt Allot 162 Waioeka PSH

Land District: Gisborne
 Digitally Generated Plan
 Generated on: 06/10/2023 07:43am | Page 24 of 25

