



Record of Survey - LT 588859

Survey Number LT 588859
Surveyor Reference 40550 Orton Downs
Surveyor Christopher Paul Hopper
Survey Firm Davis Ogilvie & Partners Ltd (Christchurch)
Surveyor Declaration I Christopher Paul Hopper, being a licensed cadastral surveyor, certify that--
(a) this dataset provided by me and its related survey are accurate, correct and in accordance with the Cadastral Survey Act 2002 and Cadastral Survey Rules 2021; and
(b) the survey was undertaken by me or under my personal direction.
Declared on 18 Dec 2023 10:29 AM

Survey Details

Dataset Description LOTS 1 - 3 BEING A DEFINITION OF LOTS 1 - 4 DP 306673, LOTS 4 - 7 DP 518796, PART RURAL SECTION 23972, PART RURAL SECTION 24041, PART RURAL SECTION 24043 AND DRY RIVER BED

Purpose LT Subdivision

Status Approved as to Survey **Type** Parcels without Survey Information

Land District Canterbury **Survey Class** Class B

Meridional Circuit Timaru 2000 **Vertical Datum** None

Survey Dates

Surveyed Date 07/03/2023 **Certified Date** 18/12/2023
Submitted Date 18/12/2023 10:29:29 **Survey Approval Date** 18/12/2023
Deposit Date

Referenced Surveys

Survey Number	Land District	Bearing Correction
DP 17971	Canterbury	0°00'25"
SO 17039	Canterbury	0°00'00"
DP 1204	Canterbury	0°00'00"
TP 23015	Canterbury	0°00'00"
DP 37397	Canterbury	0°00'25"
SO 17046	Canterbury	0°00'00"
SO 2188	Canterbury	0°00'00"
DP 65627	Canterbury	0°00'00"
DP 306673	Canterbury	0°00'00"
DP 518796	Canterbury	0°00'00"

Territorial Authorities

Timaru District

Comprised In

RT 26077
RT 813427
RT 813426



Record of Survey - LT 588859

Created Parcels

Parcels	Parcel Intent	Area	RT Reference
Lot 1 Deposited Plan 588859	Fee Simple Title	20.5940 Ha	1120855
Lot 2 Deposited Plan 588859	Fee Simple Title	141.1400 Ha	1120856
Lot 3 Deposited Plan 588859	Fee Simple Title	190.3700 Ha	1120857
Area B Deposited Plan 588859	Easement		
Area D Deposited Plan 588859	Easement		
Area A Deposited Plan 588859	Easement		
Area G Deposited Plan 588859	Easement		
Area H Deposited Plan 588859	Easement		
Area J Deposited Plan 588859	Easement		
Area K Deposited Plan 588859	Easement		
Area N Deposited Plan 588859	Easement		
Area P Deposited Plan 588859	Easement		
Area M Deposited Plan 588859	Easement		
Total Area		<hr/> 352.1040 Ha	

Mark and Vector

Survey Number DP 588859

Meridional Circuit Timaru 2000

From	To	Code	Bearing	Adpt Surv	Bearing Correction	Distance	Adpt Surv	Class
PEG (1) TP 23015	PEG (4) DP 306673	ob39	143°54'35"	A DP 306673	0°00'00"	29.37 A	DP 306673	Class B
PEG (4) DP 306673	PEG (11) DP 306673	ob38	143°54'35"	C		28.70 C		Class B
PEG (11) DP 306673	PEG (10) DP 306673	ob37	143°54'35"	A DP 306673	0°00'00"	195.56 A	DP 306673	Class B
PEG (10) DP 306673	PEG (14) DP 306673	ob35	143°54'35"	A DP 306673	0°00'00"	310.56 A	DP 306673	Class B
PEG (14) DP 306673	PEG (2) TP 23015	ob21	133°27'50"	A DP 306673	0°00'00"	365.28 A	DP 306673	Class B
PEG (2) TP 23015	PEG (1) DP 306673	ob43	133°27'50"	A DP 306673	0°00'00"	234.72 A	DP 306673	Class B
PEG (1) DP 306673	PEG (3) DP 306673	ob44	133°27'50"	A DP 306673	0°00'00"	497.78 A	DP 306673	Class B
PEG (3) DP 306673	PEG (12) DP 306673	ob42	182°00'00"	A DP 306673	0°00'00"	19.85 A	DP 306673	Class B
PEG (12) DP 306673	PEG (2) DP 306673	ob41	230°36'25"	A DP 306673	0°00'00"	564.11 A	DP 306673	Class B
PEG (2) DP 306673	PEG (5) DP 37397	ob45	230°36'25"	A DP 306673	0°00'00"	490.71 A	DP 306673	Class B
PEG (5) DP 37397	POST (2) DP 37397	ob46	320°33'55"	A DP 37397	0°00'00"	164.69 A	DP 37397	Class B
POST (2) DP 37397	POST (4) DP 37397	ob47	232°06'05"	A DP 37397	0°00'00"	131.49 A	DP 37397	Class B
POST (4) DP 37397	PEG (1) DP 37397	ob48	140°44'45"	A DP 37397	0°00'00"	168.13 A	DP 37397	Class B
PEG (1) DP 37397	PEG 820 DP 518796	ob20	230°36'25"	A DP 518796	0°00'00"	115.77 A	DP 518796	Class B
PEG 820 DP 518796	POST 819 DP 518796	ob8	323°25'00"	A DP 518796	0°00'00"	1.94 A	DP 518796	Class B
POST 819 DP 518796	POST 818 DP 518796	ob9	339°11'00"	A DP 518796	0°00'00"	24.02 A	DP 518796	Class B
POST 818 DP 518796	POST 817 DP 518796	ob10	346°50'00"	A DP 518796	0°00'00"	6.01 A	DP 518796	Class B
POST 817 DP 518796	POST 816 DP 518796	ob11	358°27'00"	A DP 518796	0°00'00"	7.95 A	DP 518796	Class B
POST 816 DP 518796	POST 815 DP 518796	ob12	2°03'00"	A DP 518796	0°00'00"	6.09 A	DP 518796	Class B
POST 815 DP 518796	POST 814 DP 518796	ob13	8°09'30"	A DP 518796	0°00'00"	27.92 A	DP 518796	Class B
POST 814 DP 518796	POST 813 DP 518796	ob16	2°45'00"	A DP 518796	0°00'00"	5.92 A	DP 518796	Class B
POST 813 DP 518796	POST 812 DP 518796	ob18	355°00'00"	A DP 518796	0°00'00"	8.54 A	DP 518796	Class B
POST 812 DP 518796	UNMK aq DP 518796	ob19	348°05'00"	A DP 518796	0°00'00"	15.21 A	DP 518796	Class B

Mark and Vector

Survey Number DP 588859

Meridional Circuit Timaru 2000

From	To	Code	Bearing	Adpt Surv	Bearing Correction	Distance	Adpt Surv	Class
UNMK aq DP 518796	UNMK ap DP 518796	ob49	348°05'00"	A DP 518796	0°00'00"	1.08 A	DP 518796	Class B
UNMK ap DP 518796	POST 811 DP 518796	ob50	348°05'00"	A DP 518796	0°00'00"	1.92 A	DP 518796	Class B
POST 811 DP 518796	POST 810 DP 518796	ob17	332°01'00"	A DP 518796	0°00'00"	17.14 A	DP 518796	Class B
POST 810 DP 518796	POST 809 DP 518796	ob15	276°32'00"	A DP 518796	0°00'00"	14.58 A	DP 518796	Class B
POST 809 DP 518796	POST 808 DP 518796	ob14	227°40'00"	A DP 518796	0°00'00"	38.61 A	DP 518796	Class B
POST 808 DP 518796	POST 807 DP 518796	ob5	148°33'00"	A DP 518796	0°00'00"	28.66 A	DP 518796	Class B
POST 807 DP 518796	POST 806 DP 518796	ob4	125°48'00"	A DP 518796	0°00'00"	4.07 A	DP 518796	Class B
POST 806 DP 518796	POST 805 DP 518796	ob6	143°43'00"	A DP 518796	0°00'00"	4.08 A	DP 518796	Class B
POST 805 DP 518796	POST 804 DP 518796	ob7	162°34'00"	A DP 518796	0°00'00"	13.97 A	DP 518796	Class B
POST 804 DP 518796	POST 803 DP 518796	ob3	145°29'00"	A DP 518796	0°00'00"	26.57 A	DP 518796	Class B
POST 803 DP 518796	POST 802 DP 518796	ob2	154°28'00"	A DP 518796	0°00'00"	35.52 A	DP 518796	Class B
POST 802 DP 518796	PEG 801 DP 518796	ob1	163°58'00"	A DP 518796	0°00'00"	2.58 A	DP 518796	Class B
PEG 801 DP 518796	PEG (15) DP 306673	ob0	230°36'25"	A DP 518796	0°00'00"	366.14 A	DP 518796	Class B
PEG (2) SO 2188	PEG (15) DP 306673	ob52	50°36'25"	A DP 518796	0°00'00"	382.06 C		Class B
PEG (1) TP 23015	POST 409 DP 518796	ob40	233°55'00"	A DP 518796	0°00'00"	804.67 A	DP 518796	Class B
POST 409 DP 518796	PEG 408 DP 518796	ob31	241°16'00"	A DP 518796	0°00'00"	6.92 A	DP 518796	Class B
PEG 408 DP 518796	PEG 407 DP 518796	ob30	255°54'30"	A DP 518796	0°00'00"	49.17 A	DP 518796	Class B
PEG 407 DP 518796	PEG 406 DP 518796	ob29	276°17'00"	A DP 518796	0°00'00"	229.35 A	DP 518796	Class B
PEG 406 DP 518796	PEG 405 DP 518796	ob28	272°52'30"	A DP 518796	0°00'00"	211.79 A	DP 518796	Class B
PEG 405 DP 518796	PEG 404 DP 518796	ob24	255°17'00"	A DP 518796	0°00'00"	157.98 A	DP 518796	Class B
PEG 404 DP 518796	PEG 403 DP 518796	ob22	323°19'00"	A DP 518796	0°00'00"	137.04 A	DP 518796	Class B
PEG 403 DP 518796	PEG 401 DP 518796	ob23	233°56'00"	A DP 518796	0°00'00"	805.00 A	DP 518796	Class B
PEG 401 DP 518796	PEG 402 DP 518796	ob26	143°53'10"	A DP 518796	0°00'00"	759.88 A	DP 518796	Class B
PEG 402 DP 518796	PEG (5) SO 2188	ob27	54°00'00"	A DP 518796	0°00'00"	804.67 A	DP 518796	Class B

Mark and Vector

Survey Number DP 588859

Meridional Circuit Timaru 2000

From	To	Code	Bearing	Adpt Surv	Bearing Correction	Distance	Adpt Surv	Class
PEG (2) SO 2188	PEG (8) SO 2188	ob53	323°07'00"	A SO 2188	0°00'00"	805.68 A	SO 2188	Class C
PEG (8) SO 2188	PEG (7) SO 2188	ob69	50°36'00"	A SO 2188	0°00'00"	540.14 A	SO 2188	Class C
PEG (7) SO 2188	PEG (5) SO 2188	ob70	323°55'00"	A SO 2188	0°00'00"	681.76 A	SO 2188	Class C
PEG 410 DP 518796	UNMK 1 DP 518796	ob33	53°57'00"	A DP 518796	0°00'00"	83.55 A	DP 518796	Class B
UNMK 1 DP 518796	PEG TP 23015	ob54	53°57'00"	A DP 518796	0°00'00"	24.26 A	DP 518796	Class B
PEG TP 23015	PEG (9) DP 306673	ob56	53°16'00"	A DP 518796	0°00'00"	155.70 A	DP 518796	Class B
PEG (6) DP 306673	PEG (9) DP 306673	ob58	233°30'30"	A DP 306673	0°00'00"	419.07 A	DP 306673	Class B
PEG (16) DP 306673	PEG (6) DP 306673	ob57	222°33'00"	C		20.79 C		Class B
PEG (10) DP 306673	PEG (16) DP 306673	ob36	234°36'30"	A DP 306673	0°00'00"	210.03 A	DP 306673	Class B
POST 409 DP 518796	PEG TP 23015	ob32	144°03'00"	A DP 518796	0°00'00"	259.81 A	DP 518796	Class B
UNMK ba DP 518796	UNMK bc DP 518796	ob82	140°34'30"	A DP 518796	0°00'00"	3.05 A	DP 518796	Class B
UNMK ad DP 518796	PEG (2) DP 306673	ob84	140°34'30"	A DP 518796	0°00'00"	29.87 A	DP 518796	Class B
PEG (2) DP 306673	POST DP 306673	ob59	155°32'00"	A DP 306673	0°00'00"	14.10 A	DP 306673	Class B
PEG (8) DP 306673	PEG (7) DP 306673	ob60	140°38'00"	A DP 306673	0°00'00"	388.80 A	DP 306673	Class B
PEG (7) DP 306673	PEG (5) DP 306673	ob61	140°43'00"	C		17.24 C		Class B
PEG (5) DP 306673	POST (2) DP 37397	ob62	140°40'00"	A DP 306673	0°00'00"	458.82 A	DP 306673	Class B
PEG TP 23015	PEG (4) SO 2188	ob63	106°00'00"	A SO 2188	0°00'00"	45.46 A	SO 2188	Class B
PEG (4) SO 2188	PEG (13) SO 2188	ob64	196°00'00"	A SO 2188	0°00'00"	63.77 A	SO 2188	Class B
PEG (13) SO 2188	PEG (12) TP 23015	ob65	286°00'00"	A SO 2188	0°00'00"	20.24 A	SO 2188	Class B
PEG (12) TP 23015	PEG (10) SO 2188	ob66	286°00'00"	A SO 2188	0°00'00"	43.53 A	SO 2188	Class B
PEG (10) SO 2188	PEG (9) SO 2188	ob67	16°00'00"	A SO 2188	0°00'00"	63.77 A	SO 2188	Class B
PEG (9) SO 2188	PEG TP 23015	ob68	106°00'00"	A SO 2188	0°00'00"	18.31 A	SO 2188	Class B
PEG 410 DP 518796	UNMK ak DP 518796	ob34	145°42'00"	A DP 518796	0°00'00"	173.16 A	DP 518796	Class B
UNMK ak DP 518796	UNMK al DP 518796	ob71	145°42'00"	A DP 518796	0°00'00"	1.00 A	DP 518796	Class B
UNMK al DP 518796	UNMK m DP 518796	ob73	145°42'00"	A DP 518796	0°00'00"	149.80 A	DP 518796	Class B
UNMK m DP 518796	UNMK ac DP 518796	ob75	145°42'00"	A DP 518796	0°00'00"	72.55 A	DP 518796	Class B

Mark and Vector

Survey Number DP 588859

Meridional Circuit Timaru 2000

From	To	Code	Bearing	Adpt Surv	Bearing Correction	Distance	Adpt Surv	Class
UNMK ac DP 518796	PEG (13) DP 306673	ob76	145°42'00"	A DP 518796	0°00'00"	22.28 A	DP 518796	Class B
PEG (13) DP 306673	PEG (8) DP 306673	ob78	140°10'00"	A DP 306673	0°00'00"	13.86 A	DP 306673	Class B
PEG 405 DP 518796	UNMK e DP 518796	ob25	182°52'30"	A DP 518796	0°00'00"	8.00 A	DP 518796	Class B
UNMK e DP 518796	UNMK d DP 518796	ob80	92°52'30"	A DP 518796	0°00'00"	211.79 A	DP 518796	Class B
UNMK d DP 518796	PEG 406 DP 518796	ob81	2°52'30"	A DP 518796	0°00'00"	8.00 A	DP 518796	Class B
UNMK ac DP 518796	UNMK ad DP 518796	ob77	51°04'00"	A DP 518796	0°00'00"	298.51 A	DP 518796	Class B
PEG (13) DP 306673	PEG (2) DP 306673	ob79	52°32'00"	A DP 518796	0°00'00"	300.65 A	DP 518796	Class B
UNMK ak DP 518796	UNMK u DP 518796	ob72	55°42'00"	A DP 518796	0°00'00"	63.15 A	DP 518796	Class B
UNMK u DP 518796	UNMK w DP 518796	ob86	55°42'00"	A DP 518796	0°00'00"	155.81 A	DP 518796	Class B
UNMK w DP 518796	UNMK x DP 518796	ob88	327°24'00"	A DP 518796	0°00'00"	1.87 A	DP 518796	Class B
UNMK x DP 518796	UNMK y DP 518796	ob89	57°24'00"	A DP 518796	0°00'00"	4.05 A	DP 518796	Class B
UNMK y DP 518796	UNMK ba DP 518796	ob90	41°43'00"	A DP 518796	0°00'00"	57.02 A	DP 518796	Class B
UNMK al DP 518796	UNMK v DP 518796	ob74	55°42'00"	A DP 518796	0°00'00"	62.90 A	DP 518796	Class B
UNMK v DP 518796	UNMK ab DP 518796	ob92	55°42'00"	A DP 518796	0°00'00"	156.03 A	DP 518796	Class B
UNMK ab DP 518796	UNMK aa DP 518796	ob94	147°24'00"	A DP 518796	0°00'00"	1.87 A	DP 518796	Class B
UNMK aa DP 518796	UNMK z DP 518796	ob95	51°45'00"	A DP 518796	0°00'00"	4.50 A	DP 518796	Class B
UNMK z DP 518796	UNMK be DP 518796	ob96	321°45'00"	A DP 518796	0°00'00"	1.25 A	DP 518796	Class B
UNMK be DP 518796	UNMK bc DP 518796	ob97	41°43'00"	A DP 518796	0°00'00"	57.08 A	DP 518796	Class B
UNMK y DP 518796	UNMK be DP 518796	ob91	141°45'00"	A DP 518796	0°00'00"	3.05 A	DP 518796	Class B
UNMK l DP 518796	UNMK n DP 518796	ob55	146°06'00"	A DP 518796	0°00'00"	50.00 A	DP 518796	Class B
UNMK n DP 518796	UNMK p DP 518796	ob98	150°53'00"	A DP 518796	0°00'00"	50.00 A	DP 518796	Class B
UNMK p DP 518796	UNMK q DP 518796	ob99	155°40'00"	A DP 518796	0°00'00"	50.00 A	DP 518796	Class B
UNMK q DP 518796	UNMK u DP 518796	ob100	160°02'30"	A DP 518796	0°00'00"	27.52 A	DP 518796	Class B
UNMK u DP 518796	UNMK v DP 518796	ob87	160°02'30"	A DP 518796	0°00'00"	1.03 A	DP 518796	Class B

Mark and Vector

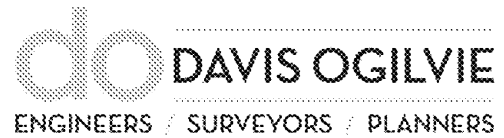
Survey Number DP 588859

Meridional Circuit Timaru 2000

From	To	Code	Bearing	Adpt Surv	Bearing Correction	Distance	Adpt Surv	Class
UNMK v DP 518796	UNMK r DP 518796	ob93	160°02'30"	A DP 518796	0°00'00"	12.97 A	DP 518796	Class B
UNMK r DP 518796	UNMK s DP 518796	ob101	164°25'00"	A DP 518796	0°00'00"	50.00 A	DP 518796	Class B
UNMK s DP 518796	UNMK t DP 518796	ob102	169°12'00"	A DP 518796	0°00'00"	50.00 A	DP 518796	Class B
UNMK t DP 518796	UNMK m DP 518796	ob103	173°59'00"	A DP 518796	0°00'00"	50.00 A	DP 518796	Class B
UNMK ba DP 518796	UNMK bb DP 518796	ob83	41°43'00"	A DP 518796	0°00'00"	73.70 A	DP 518796	Class B
UNMK bb DP 518796	UNMK bd DP 518796	ob104	131°43'00"	A DP 518796	0°00'00"	3.00 A	DP 518796	Class B
UNMK bd DP 518796	UNMK bc DP 518796	ob105	221°43'00"	A DP 518796	0°00'00"	74.20 A	DP 518796	Class B
UNMK ad DP 518796	UNMK ae DP 518796	ob85	51°04'00"	A DP 518796	0°00'00"	89.70 A	DP 518796	Class B
UNMK af DP 518796	UNMK ag DP 518796	ob107	51°04'00"	A DP 518796	0°00'00"	100.83 A	DP 518796	Class B
UNMK ag DP 518796	UNMK ah DP 518796	ob108	141°04'00"	A DP 518796	0°00'00"	43.53 A	DP 518796	Class B
UNMK ah DP 518796	UNMK ai DP 518796	ob109	231°04'00"	A DP 518796	0°00'00"	118.91 A	DP 518796	Class B
UNMK aj DP 518796	POST DP 306673	ob111	231°04'00"	A DP 518796	0°00'00"	69.77 A	DP 518796	Class B
UNMK ap DP 518796	UNMK ar DP 518796	ob51	56°06'00"	A DP 518796	0°00'00"	54.84 A	DP 518796	Class B
UNMK ar DP 518796	UNMK as DP 518796	ob112	87°31'00"	A DP 518796	0°00'00"	1.43 A	DP 518796	Class B
UNMK as DP 518796	UNMK at DP 518796	ob113	177°31'00"	A DP 518796	0°00'00"	1.00 A	DP 518796	Class B
UNMK at DP 518796	UNMK au DP 518796	ob114	267°31'00"	A DP 518796	0°00'00"	1.15 A	DP 518796	Class B
UNMK au DP 518796	UNMK aq DP 518796	ob115	236°06'00"	A DP 518796	0°00'00"	54.97 A	DP 518796	Class B
UNMK ae DP 518796	UNMK af DP 518796	ob106	51°04'00"	A DP 518796	0°00'00"	16.98 A	DP 518796	Class B
UNMK ai DP 518796	UNMK aj DP 518796	ob110	231°04'00"	A DP 518796	0°00'00"	22.09 A	DP 518796	Class B

*** End of Report ***

DAVIS OGILVIE & PARTNERS LIMITED
 Level 1, 24 Moorhouse Avenue, Addington
 PO Box 589, Christchurch 8140
 0800 999 333 / 03 366 1653 / hello@do.nz
 Offices in Christchurch, Timaru, Nelson & Greymouth. www.do.nz



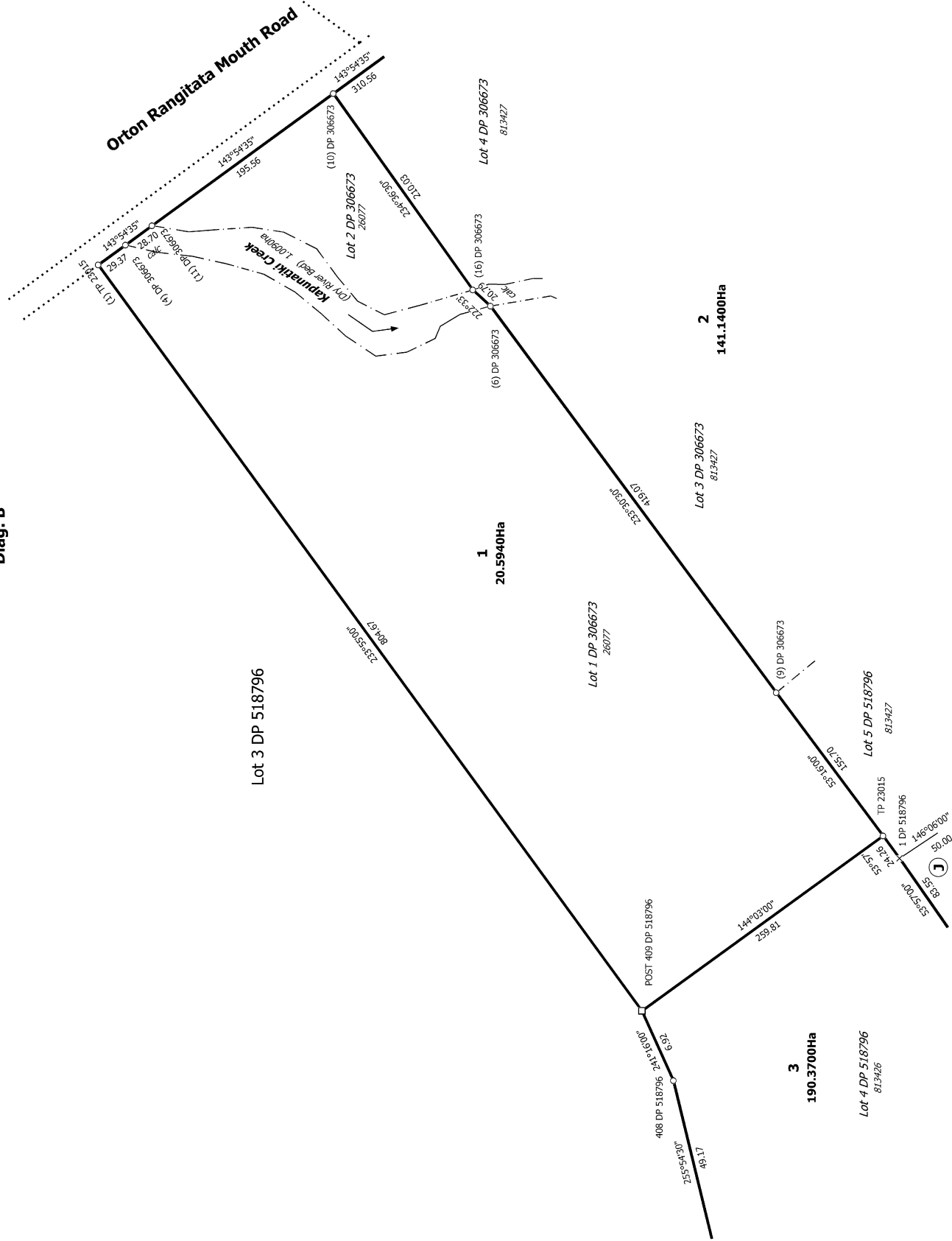
DP 588859

Schedule of Existing Easements			
Purpose	Shown	Burdened Land	Document No.
Right to Convey Water and Electricity	D, G, H	Lot 2	E.I. 11102941.6
Right to Convey Electricity	N & P		
Right to Discharge Water (Pivot Irrigation)	J, K, H	Lot 2	E.I. 11102941.7
	B	Lot 3	
Right to Convey Water and Electricity	M	Lot 3	E.I. 11102941.6

Schedule of Easements			
Purpose	Shown	Burdened Land	Benefited
Right to Convey Water and Electricity	A	Lot 2	Lot 3

Note:
 Easement Instrument 11102941.6 is to be partially cancelled as Areas E & F DP 518796 are to be extinguished and Area A created.

Diag. B



T 2/4

Land District: Canterbury
 Dataset Type: Parcels without Survey Information
Digitally Generated Plan
 Generated on: 18/12/2023 12:39pm Page 10 of 12

LOTS 1 - 3 BEING A DEFINITION OF LOTS 1 - 4 DP 306673, LOTS 4 - 7 DP 518796, PART RURAL SECTION 23972, PART RURAL SECTION 24041, PART RURAL SECTION 24043 AND DRY RIVER RFD

Surveyor: Christopher Paul Hopper
 Firm: Davis Ogilvie & Partners Ltd (Christch)
 Date of Survey: 7/03/2023

Record of Survey
 LT 588859
 Approved on: 18/12/2023



2
141.1400Ha

Lot 4 DP 306673
81.3427

Lot 1 DP 37397

Lot 7 DP 518796
81.3426

3
190.3700Ha

Lot 8 DP 518796

3
190.3700Ha

Rolliston Road

Rolliston Road

Diag. E

Diag. EB

Diag. EA

Diag. EB
See T4

Diag. EA
See T4

T 4/4

Land District: Canterbury
Dataset Type: Parcels without Survey Information
Digitally Generated Plan
Generated on: 18/12/2023 12:39pm Page 12 of 12

LOTS 1 - 3 BEING A DEFINITION OF LOTS 1 - 4 DP 306673, LOTS 4 - 7 DP 518796, PART RURAL SECTION 23972, PART RURAL SECTION 24041, PART RURAL SECTION 24043 AND DRY RIVER RFD

Surveyor: Christopher Paul Hopper
Firm: Davis Ogilvie & Partners Ltd (Christcl)
Date of Survey: 7/03/2023

Record of Survey
LT 588859
Approved on: 18/12/2023