

Record of Survey - LT 586892

Survey Number LT 586892
Surveyor Reference 1318 Lee
Surveyor Lynda Maree Watson
Survey Firm Coastwide Surveys Ltd
Surveyor Declaration I Lynda Maree Watson, being a licensed cadastral surveyor, certify that--
 (a) this dataset provided by me and its related survey are accurate, correct and in accordance with the Cadastral Survey Act 2002 and Cadastral Survey Rules 2021; and
 (b) the survey was undertaken by me or under my personal direction.
 Declared on 26 Oct 2023 09:23 AM

Survey Details

Dataset Description Lots 1 to 7 being Subdivision of Lot 4 DP 411672, Section 1 SO 413150, Lot 8 DP 380239, Lot 6 DP 380239, and Pt RS 1918
Purpose LT Subdivision
Status Approved as to Survey **Type** Survey
Land District Westland **Survey Class** Class B
Meridional Circuit Hokitika 2000 **Vertical Datum** None

Survey Dates

Surveyed Date 13/01/2023 **Certified Date** 26/10/2023
Submitted Date 26/10/2023 09:23:03 **Survey Approval Date** 27/10/2023
Deposit Date

Referenced Surveys

Survey Number	Land District	Bearing Correction
SO 1303	Westland	0°00'00"
SO 5160	Westland	0°00'00"
SO 7516	Westland	0°00'00"
SO 7693	Westland	0°00'00"
SO 7504	Westland	0°00'00"
DP 2775	Westland	0°00'00"
SO 7503	Westland	0°00'00"
DP 380239	Westland	0°00'00"
DP 411672	Westland	0°00'00"
SO 413150	Westland	0°00'00"
DP 532918	Westland	0°00'00"

Territorial Authorities

Westland District

Comprised In

RT 483681
 RT 321560
 RT 598052

Record of Survey - LT 586892

Comprised In

RT 815993

Created Parcels

Parcels	Parcel Intent	Area	RT Reference
Lot 1 Deposited Plan 586892	Fee Simple Title	0.5502 Ha	1111642
Lot 2 Deposited Plan 586892	Fee Simple Title	1.4280 Ha	1111643
Lot 3 Deposited Plan 586892	Vesting on Deposit for Road	0.5401 Ha	
Lot 4 Deposited Plan 586892	Vesting on Deposit for Road	1.3195 Ha	
Lot 5 Deposited Plan 586892	Fee Simple Title	1.2530 Ha	1111644
Lot 6 Deposited Plan 586892	Vesting on Deposit for Road	0.1274 Ha	
Lot 7 Deposited Plan 586892	Fee Simple Title	3.1680 Ha	1111645
Area A Deposited Plan 586892	Easement		
Area B Deposited Plan 586892	Easement		
Area C Deposited Plan 586892	Easement		
Area D Deposited Plan 586892	Easement		
Area E Deposited Plan 586892	Easement		
Area F Deposited Plan 586892	Easement		
Area G Deposited Plan 586892	Easement		
Area H Deposited Plan 586892	Easement		
Area I Deposited Plan 586892	Easement		
Total Area		8.3862 Ha	

Mark and Vector

Survey Number DP 586892
Meridional Circuit Hokitika 2000

From	To	Code	Bearing	Adpt Surv	Bearing Correction	Distance	Adpt Surv	Class
5111	IT II SO 9691	ob0	111°17'35" M			336.31 M		
5111	IT 32 DP 380239	ob1	55°58'12" M			843.51 M		
IT 32 DP 380239	IT II SO 9691	ob7	212°59'23" M			708.42 M		
IT II SO 9691	PEG IIa DP 380239	ob4	78°29'00" A	DP 380239	0°00'00"	30.10 A	DP 380239	
IT II SO 9691	PEG IIb DP 380239	ob5	50°27'00" M			56.72 M		
IT 32 DP 380239	PEG 32a DP 380239	ob8	190°38'00" M			47.80 M		
PEG IIa DP 380239	PEG IIb DP 380239	ob18	25°19'00" A	DP 380239	0°00'00"	33.31 A	DP 380239	Class B
5111	IT 3 DP 532918	ob2	60°27'33" M			1,085.48 M		
IT 3 DP 532918	IT II SO 9691	ob23	223°49'52" M			911.22 M		
IT 3 DP 532918	IT 4 DP 532918	ob24	32°44'30" M			49.42 M		
IT 3 DP 532918	PEG 3a DP 532918	ob25	344°35'00" A	DP 532918	0°00'00"	8.40 A	DP 532918	
IT 3 DP 532918	IT 2 DP 532918	ob26	118°03'20" A	DP 532918	0°00'00"	151.17 A	DP 532918	
IT II SO 9691	IT 41 DP 380239	ob6	35°12'40" M			239.05 M		
IT 41 DP 380239	IT I LT 2775	ob9	35°18'20" M			104.80 M		
IT I LT 2775	IT 1 DP 586892	ob11	40°12'00" M			255.50 M		
IT 1 DP 586892	IT 32 DP 380239	ob15	10°44'30" M			120.31 M		
5111	IT 1 DP 586892	ob3	62°23'30" M			763.56 M		
IT 3 DP 532918	IT 4 DP 586892	ob27	184°56'00" M			47.26 M		
IT 4 DP 586892	IT 3 DP 586892	ob32	248°12'30" M			60.62 M		
IT 3 DP 586892	IT 3 DP 411672	ob37	230°44'30" M			71.99 M		
IT 3 DP 411672	IS 2a DP 586892	ob40	203°21'00" M			73.57 M		
IS 2a DP 586892	IT 2 DP 586892	ob56	203°21'00" M			23.76 M		
IT 2 DP 586892	IT 1 DP 586892	ob46	281°34'00" M			115.39 M		
IT 4 DP 586892	PEG 4a DP 586892	ob33	33°22'00" M			10.24 M		
IT 4 DP 586892	PEG 4b DP 586892	ob34	158°14'00" M			2.97 M		
IT 4 DP 586892	PEG 4c DP 586892	ob35	217°10'00" M			16.74 M		
IT 4 DP 586892	PEG 4d DP 586892	ob36	231°02'30" M			31.32 M		
IT 3 DP 586892	PEG 3a DP 586892	ob38	132°41'00" M			7.27 M		
IT 3 DP 586892	PEG 3b DP 586892	ob39	220°03'30" M			29.02 M		
IT 3 DP 411672	PEG 3a DP 411672	ob41	297°19'00" M			4.35 M		
IT 3 DP 411672	PEG B DP 586892	ob42	45°40'30" M			45.92 M		
IS 2a DP 586892	IT 7 DP 380239	ob57	107°47'00" M			13.27 M		

Mark and Vector

Survey Number DP 586892

Meridional Circuit Hokitika 2000

From	To	Code	Bearing	Adpt Surv	Bearing Correction	Distance	Adpt Surv	Class
IS 2a DP 586892	PEG 7c DP 380239	ob58	102°57'00"	M		17.80 M		
IT I LT 2775	IT 10 DP 380239	ob12	8°23'00"	A DP 380239	0°00'00"	104.01 A	DP 380239	
IT 10 DP 380239	IT 33 DP 380239	ob61	59°18'00"	A DP 380239	0°00'00"	174.14 A	DP 380239	
IT 33 DP 380239	IT 32 DP 380239	ob62	10°27'40"	A DP 380239	0°00'00"	123.59 A	DP 380239	
IT 33 DP 380239	PEG 33a DP 380239	ob63	29°54'00"	A DP 380239	0°00'00"	23.97 A	DP 380239	
IT 1 DP 586892	PEG 33a DP 380239	ob16	34°23'00"	M		21.14 M		
IT 33 DP 380239	IT 1 DP 411672	ob64	107°23'47"	A DP 411672	0°00'00"	74.90 A	DP 411672	
IT 1 DP 411672	IT 2 DP 411672	ob66	72°25'30"	A DP 411672	0°00'00"	53.55 A	DP 411672	
IT 2 DP 411672	IT 3 DP 411672	ob67	21°00'40"	A DP 411672	0°00'00"	81.22 A	DP 411672	
IT 2 DP 411672	PEG 7a DP 380239	ob68	82°01'00"	A DP 411672	0°00'00"	13.80 A	DP 411672	
IT 7 DP 380239	PEG 7a DP 380239	ob59	154°56'00"	A DP 380239	0°00'00"	2.53 A	DP 380239	
IT 7 DP 380239	PEG 7c DP 380239	ob60	89°06'00"	A DP 380239	0°00'00"	4.71 A	DP 380239	
PEG B DP 586892	UNMK 16 DP 586892	ob54	154°15'00"	C		1.15 C		Class B
UNMK 16 DP 586892	UNMK 5 DP 586892	ob164	154°15'00"	C		6.02 C		Class B
UNMK 5 DP 586892	PEG 3b DP 586892	ob165	154°15'00"	C		2.54 C		Class B
PEG 3b DP 586892	PEG 3a DP 586892	ob51	54°16'00"	C		29.59 C		Class B
PEG 3a DP 586892	PEG 4d DP 586892	ob50	73°47'00"	C		27.70 C		Class B
PEG 4d DP 586892	PEG 4c DP 586892	ob49	65°58'00"	C		15.59 C		Class B
PEG 4c DP 586892	PEG 4b DP 586892	ob48	46°40'00"	C		15.42 C		Class B
PEG 4b DP 586892	PEG 4a DP 586892	ob47	21°50'00"	C		12.18 C		Class B
IT I LT 2775	UNMK 32 DP 380239	ob13	282°50'00"	A DP 380239	0°00'00"	5.76 A	DP 380239	
IT I LT 2775	PEG G DP 586892	ob14	217°40'20"	A DP 380239	0°00'00"	105.95 A	DP 380239	
IT 41 DP 380239	PEG G DP 586892	ob10	291°41'00"	M		4.50 M		
PEG IIb DP 380239	PEG G DP 586892	ob21	29°12'00"	A DP 380239	0°00'00"	184.28 A	DP 380239	Class B
PEG G DP 586892	UNMK 32 DP 380239	ob73	34°47'00"	A SO 5160	0°00'00"	103.66 A	SO 5160	Class B
UNMK 32 DP 380239	PEG 1a DP 586892	ob72	34°47'00"	A SO 7693	0°00'00"	271.44 C		Class B

Mark and Vector

Survey Number DP 586892

Meridional Circuit Hokitika 2000

From	To	Code	Bearing	Adpt Surv	Bearing Correction	Distance	Adpt Surv	Class
PEG 1a DP 586892	PEG 32a DP 380239	ob102	34°47'00"	A SO 7693	0°00'00"	51.30 C		Class B
IT 4 DP 532918	IT 5 DP 532918	ob29	27°03'30"	M		59.77 M		
IT 2 DP 532918	PEG 15a DP 380239	ob74	336°19'30"	A DP 532918	0°00'00"	25.73 A	DP 532918	
PEG 3a DP 532918	UNMK 10 DP 532918	ob30	113°57'00"	A SO 7693	0°00'00"	9.00 A	DP 532918	Class B
UNMK 10 DP 532918	PEG A DP 586892	ob75	113°57'00"	A SO 7693	0°00'00"	3.50 C		Class B
PEG A DP 586892	PEG 15a DP 380239	ob77	113°57'00"	A SO 7693	0°00'00"	124.60 C		Class B
IT 3 DP 532918	PEG A DP 586892	ob28	71°47'00"	M		9.68 M		
IT 3 DP 411672	IT 5 DP 411672	ob43	36°39'00"	M		50.68 M		
IT 5 DP 411672	IT 11 DP 411672	ob80	328°47'00"	A DP 411672	0°00'00"	22.38 A	DP 411672	
IT 11 DP 411672	IT 12 DP 411672	ob85	300°04'30"	A DP 411672	0°00'00"	58.73 A	DP 411672	
IT 12 DP 411672	IT 32 DP 380239	ob86	248°59'20"	A DP 411672	0°00'00"	103.92 A	DP 411672	
IT 5 DP 411672	PEG 5a DP 411672	ob81	340°30'00"	M		14.99 M		
IT 5 DP 411672	PEG C DP 586892	ob82	230°50'00"	M		6.37 M		
PEG 3a DP 411672	PEG D DP 586892	ob53	28°52'42"	A DP 411672	0°00'00"	41.81 C		Class B
PEG D DP 586892	PEG 5a DP 411672	ob89	28°52'42"	A DP 411672	0°00'00"	18.48 C		Class B
IT 5 DP 411672	PEG D DP 586892	ob83	261°37'00"	M		14.08 M		
PEG C DP 586892	UNMK 13 DP 586892	ob88	282°22'00"	C		0.81 C		Class B
UNMK 13 DP 586892	PEG D DP 586892	ob162	282°22'00"	C		8.39 C		Class B
IT 3 DP 411672	PEG E DP 586892	ob44	65°55'00"	M		16.59 M		
PEG 3b DP 586892	PEG E DP 586892	ob52	232°55'00"	C		27.48 C		Class B
PEG A DP 586892	UNMK 6 DP 586892	ob78	190°24'00"	C		8.53 C		Class B
UNMK 6 DP 586892	PEG 4a DP 586892	ob170	190°24'00"	C		33.72 C		Class B
PEG 7a DP 380239	PEG 7b DP 380239	ob69	51°56'00"	A SO 1303	0°00'00"	0.91 A	DP 380239	Class B
PEG 7b DP 380239	PEG 7c DP 380239	ob90	58°18'30"	A SO 1303	0°00'00"	3.43 A	DP 380239	Class B
PEG 7c DP 380239	UNMK 12 DP 380239	ob70	356°52'00"	A DP 380239	0°00'00"	12.68 A	DP 380239	Class B
UNMK 12 DP 380239	UNMK 11 DP 380239	ob91	14°14'00"	A DP 380239	0°00'00"	28.52 A	DP 380239	Class B

Mark and Vector

Survey Number DP 586892

Meridional Circuit Hokitika 2000

From	To	Code	Bearing	Adpt Surv	Bearing Correction	Distance	Adpt Surv	Class
UNMK 11 DP 380239	PEG F DP 586892	ob92	25°19'00"	A DP 380239	0°00'00"	27.56 A	DP 380239	Class B
PEG F DP 586892	UNMK 17 DP 532918	ob93	32°04'00"	A DP 380239	0°00'00"	16.00 A	DP 532918	
UNMK 17 DP 532918	UNMK 25 DP 532918	ob95	45°46'00"	A DP 532918	0°00'00"	20.22 A	DP 532918	
UNMK 25 DP 532918	UNMK 14 DP 532918	ob96	11°35'00"	A DP 532918	0°00'00"	8.32 A	DP 532918	
UNMK 14 DP 532918	UNMK 15 DP 586892	ob97	11°35'00"	A DP 532918	0°00'00"	3.40 C		
UNMK 15 DP 586892	UNMK 7 DP 380239	ob168	11°35'00"	A DP 532918	0°00'00"	18.18 C		Class B
UNMK 7 DP 380239	UNMK 4 DP 532918	ob98	10°33'00"	A DP 532918	0°00'00"	8.90 A	DP 532918	Class B
UNMK 4 DP 532918	PEG 5b DP 411672	ob100	208°50'00"	A DP 411672	0°00'00"	10.44 A	DP 532918	Class B
IT 3 DP 411672	PEG F DP 586892	ob45	135°07'00"	M		8.90 M		
PEG F DP 586892	PEG E DP 586892	ob94	34°08'00"	C		15.80 C		Class B
IT 1 DP 586892	PEG 1a DP 586892	ob17	331°42'00"	M		33.04 M		
PEG 1a DP 586892	PEG 33a DP 380239	ob103	112°53'00"	C		29.95 C		Class B
PEG IIa DP 380239	PEG (4) SO 7516	ob19	114°04'00"	A SO 7516	0°00'00"	9.84 A	DP 380239	Class B
PEG (4) SO 7516	PEG 2A DP 458375	ob104	39°57'00"	A SO 5160	0°00'00"	81.17 A	SO 5160	Class B
PEG 2A DP 458375	PEG 41a DP 380239	ob106	26°15'00"	A SO 5160	0°00'00"	136.67 A	SO 5160	Class B
PEG 41a DP 380239	PEG X LT 2775	ob107	34°47'00"	A SO 5160	0°00'00"	105.96 A	SO 5160	Class B
PEG X LT 2775	PEG VIII LT 2775	ob108	38°02'00"	A DP 2775	0°00'00"	129.76 A	DP 2775	Class B
PEG VIII LT 2775	PEG 10a DP 380239	ob109	44°17'00"	A DP 380239	0°00'00"	41.80 A	DP 380239	Class B
PEG 10a DP 380239	PEG 33g DP 380239	ob110	32°13'00"	A DP 380239	0°00'00"	63.78 A	DP 380239	Class B
PEG 33g DP 380239	PEG 33a DP 380239	ob111	31°34'00"	A DP 380239	0°00'00"	39.33 A	DP 380239	Class B
PEG (4) SO 7516	PEG G DP 586892	ob105	26°01'00"	A SO 5160	0°00'00"	216.96 A	SO 5160	Class B
UNMK 4 DP 532918	PEG 10a DP 411672	ob101	28°50'00"	A DP 411672	0°00'00"	16.76 A	DP 532918	Class B
PEG 10a DP 411672	PEG 10b DP 411672	ob113	38°51'00"	A DP 411672	0°00'00"	16.54 A	DP 411672	Class B
PEG 10b DP 411672	PEG 14a DP 411672	ob114	39°37'00"	A DP 411672	0°00'00"	27.15 A	DP 411672	Class B

Mark and Vector

Survey Number DP 586892

Meridional Circuit Hokitika 2000

From	To	Code	Bearing	Adpt Surv	Bearing Correction	Distance	Adpt Surv	Class
PEG 14a DP 411672	PEG 13a DP 411672	ob115	34°02'00"	A DP 411672	0°00'00"	31.23 A	DP 411672	Class B
PEG 13a DP 411672	UNMK A SO 413150	ob116	113°57'00"	A SO 7693	0°00'00"	0.79 A	SO 413150	Class BD
UNMK A SO 413150	UNMK 1 DP 380239	ob117	113°57'00"	A SO 7693	0°00'00"	2.00 A	SO 413150	
UNMK 1 DP 380239	UNMK 61 DP 532918	ob118	113°57'00"	A SO 7693	0°00'00"	1.04 A	DP 532918	Class B
UNMK 61 DP 532918	PEG 40a DP 380239	ob120	113°57'00"	A SO 7693	0°00'00"	2.67 A	DP 532918	Class B
PEG 40a DP 380239	PEG 3a DP 532918	ob121	113°57'00"	A SO 7693	0°00'00"	19.46 A	DP 532918	Class B
UNMK 1 DP 380239	UNMK b SO 413150	ob119	212°47'00"	A DP 380239	0°00'00"	2.50 A	SO 413150	Class BD
PEG 33g DP 380239	PEG 33f DP 380239	ob112	52°56'00"	A DP 380239	0°00'00"	7.86 A	DP 380239	Class B
PEG 33f DP 380239	PEG 2d DP 380239	ob122	93°01'00"	A DP 380239	0°00'00"	18.52 A	DP 380239	Class B
PEG 2d DP 380239	PEG 1a DP 380239	ob123	123°33'30"	A DP 380239	0°00'00"	74.14 A	DP 380239	Class B
PEG 1a DP 380239	PEG 7a DP 380239	ob124	51°56'00"	A SO 1303	0°00'00"	74.02 A	DP 380239	Class B
PEG 33a DP 380239	PEG 33b DP 380239	ob65	112°53'00"	A DP 380239	0°00'00"	16.23 A	DP 380239	Class B
PEG 33b DP 380239	PEG 33c DP 380239	ob125	137°39'00"	A DP 380239	0°00'00"	6.79 A	DP 380239	Class B
PEG 33c DP 380239	PEG 33d DP 380239	ob126	156°02'00"	A DP 380239	0°00'00"	12.47 A	DP 380239	Class B
PEG 33d DP 380239	PEG 33e DP 380239	ob127	142°30'00"	A DP 380239	0°00'00"	7.55 A	DP 380239	Class B
PEG 33e DP 380239	PEG 2a DP 380239	ob128	110°20'00"	A DP 380239	0°00'00"	24.38 A	DP 380239	Class B
PEG 2a DP 380239	PEG 2b DP 380239	ob129	90°07'00"	A DP 380239	0°00'00"	13.02 A	DP 380239	Class B
PEG 2b DP 380239	PEG 7d DP 380239	ob130	55°37'30"	A DP 380239	0°00'00"	50.21 A	DP 380239	Class B
PEG 7d DP 380239	PEG 3a DP 411672	ob131	26°11'12"	A DP 411672	0°00'00"	66.47 A	DP 411672	Class B
PEG 7c DP 380239	PEG 7e DP 380239	ob71	58°18'30"	A SO 1303	0°00'00"	115.12 A	DP 380239	Class B
PEG 7e DP 380239	PEG 9a DP 380239	ob132	60°35'30"	A SO 1303	0°00'00"	82.94 A	DP 380239	Class B
PEG 9a DP 380239	UNMK 11 DP 586892	ob133	64°53'00"	A SO 1303	0°00'00"	65.83 C		Class B
UNMK 11 DP 586892	UNMK 12 DP 586892	ob172	64°53'00"	A SO 1303	0°00'00"	7.27 C		Class B
UNMK 12 DP 586892	PEG 15a DP 380239	ob173	64°53'00"	A SO 1303	0°00'00"	16.21 C		Class B

Mark and Vector

Survey Number DP 586892

Meridional Circuit Hokitika 2000

From	To	Code	Bearing	Adpt Surv	Bearing Correction	Distance	Adpt Surv	Class
PEG 32a DP 380239	PEG A DP 532918	ob22	34°28'00"	A SO 7503	0°00'00"	213.89 A	DP 532918	Class B
PEG A DP 532918	PEG 27b DP 380239	ob134	34°28'00"	A SO 7503	0°00'00"	26.75 A	DP 532918	Class B
PEG 28a DP 380239	PEG 30b DP 380239	ob136	45°01'00"	A SO 7504	0°00'00"	103.50 A	DP 380239	Class B
PEG 30b DP 380239	PEG 31b DP 380239	ob137	55°13'00"	A SO 5160	0°00'00"	54.26 A	DP 380239	Class B
PEG 31b DP 380239	PEG 31a DP 380239	ob138	156°39'00"	A DP 380239	0°00'00"	20.55 A	DP 380239	Class B
PEG 31a DP 380239	PEG 30a DP 380239	ob139	235°13'00"	A SO 5160	0°00'00"	48.38 A	DP 380239	Class B
PEG 30a DP 380239	PEG 29a DP 380239	ob140	225°01'00"	A SO 7504	0°00'00"	100.22 A	DP 380239	Class B
PEG 27a DP 380239	PEG 27c DP 380239	ob142	214°28'00"	A SO 7503	0°00'00"	22.65 A	DP 380239	Class B
PEG 27c DP 380239	PEG 32b DP 380239	ob143	214°28'00"	A SO 7503	0°00'00"	170.56 A	DP 380239	Class B
PEG 32b DP 380239	PEG 32c DP 380239	ob144	207°51'00"	A DP 380239	0°00'00"	33.60 A	DP 380239	Class B
PEG 32c DP 380239	PEG 33a DP 380239	ob145	209°34'30"	A DP 380239	0°00'00"	59.17 A	DP 380239	Class B
PEG IIa DP 380239	PEG (5) SO 7516	ob20	294°04'00"	A SO 7516	0°00'00"	84.91 A	DP 380239	Class B
PEG (5) SO 7516	PEG (6) SO 7516	ob147	23°46'00"	A SO 7516	0°00'00"	318.45 A	SO 7516	Class B
PEG (6) SO 7516	UNMK 32 DP 380239	ob148	113°57'00"	A SO 7516	0°00'00"	122.91 A	SO 7516	Class B
PEG 3a DP 532918	UNMK 32 DP 532918	ob31	173°10'00"	A DP 532918	0°00'00"	11.09 A	DP 532918	Class B
UNMK 32 DP 532918	UNMK 33 DP 532918	ob149	186°42'00"	A DP 532918	0°00'00"	29.15 A	DP 532918	Class B
UNMK 33 DP 532918	UNMK 31 DP 532918	ob150	203°44'00"	A DP 532918	0°00'00"	17.07 A	DP 532918	Class B
UNMK 31 DP 532918	UNMK 12 DP 532918	ob151	241°46'00"	A DP 532918	0°00'00"	3.99 A	DP 532918	Class B
UNMK 12 DP 532918	UNMK 24 DP 532918	ob152	247°56'30"	A DP 532918	0°00'00"	53.44 A	DP 532918	Class B
UNMK 24 DP 532918	UNMK 40 DP 532918	ob153	238°28'00"	A DP 532918	0°00'00"	11.95 A	DP 532918	Class B
UNMK 40 DP 532918	UNMK 13 DP 532918	ob154	217°43'00"	A DP 532918	0°00'00"	7.55 A	DP 532918	Class B
UNMK 13 DP 532918	UNMK 16 DP 586892	ob155	237°31'00"	A DP 532918	0°00'00"	4.44 C		Class B
UNMK 29 DP 532918	UNMK 26 DP 532918	ob156	203°44'00"	A DP 532918	0°00'00"	20.04 A	DP 532918	Class B
UNMK 26 DP 532918	UNMK 35 DP 532918	ob157	241°46'00"	A DP 532918	0°00'00"	6.38 A	DP 532918	Class B

Mark and Vector

Survey Number DP 586892

Meridional Circuit Hokitika 2000

From	To	Code	Bearing	Adpt Surv	Bearing Correction	Distance	Adpt Surv	Class
UNMK 35 DP 532918	UNMK 30 DP 532918	ob158	247°56'30"	A DP 532918	0°00'00"	53.27 A	DP 532918	Class B
UNMK 30 DP 532918	UNMK 34 DP 532918	ob159	238°28'00"	A DP 532918	0°00'00"	10.36 A	DP 532918	Class B
UNMK 34 DP 532918	UNMK 27 DP 532918	ob160	217°43'00"	A DP 532918	0°00'00"	7.50 A	DP 532918	Class B
UNMK 27 DP 532918	UNMK 5 DP 586892	ob161	237°31'00"	A DP 532918	0°00'00"	6.17 C		Class B
IT 5 DP 411672	PEG 5b DP 411672	ob84	9°32'00"	A DP 411672	0°00'00"	9.72 A	DP 411672	
PEG 5a DP 411672	PEG 5b DP 411672	ob87	124°28'00"	A DP 411672	0°00'00"	8.02 A	DP 411672	Class B
PEG 5b DP 411672	IS 5d DP 411672	ob166	208°50'00"	A DP 411672	0°00'00"	14.90 A	DP 411672	Class B
IS 5d DP 411672	UNMK 13 DP 586892	ob167	202°30'00"	A DP 411672	0°00'00"	0.41 C		Class B
PEG A DP 586892	UNMK 8 DP 586892	ob79	126°17'00"	C		37.95 C		Class B
UNMK 8 DP 586892	UNMK 10 DP 586892	ob174	112°47'00"	C		34.65 C		Class B
UNMK 10 DP 586892	UNMK 12 DP 586892	ob175	120°26'30"	C		42.56 C		Class B
UNMK 7 DP 586892	UNMK 9 DP 586892	ob176	112°47'00"	C		34.92 C		Class B
UNMK 9 DP 586892	UNMK 11 DP 586892	ob177	120°26'30"	C		38.04 C		Class B
PEG B DP 586892	UNMK 15 DP 586892	ob55	301°08'00"	C		1.45 C		Class B
UNMK 15 DP 586892	UNMK 14 DP 586892	ob169	301°08'00"	C		4.50 C		Class B
UNMK 14 DP 586892	PEG C DP 586892	ob163	301°08'00"	C		2.86 C		Class B
UNMK 7 DP 380239	UNMK 14 DP 586892	ob99	205°51'00"	A DP 380239	0°00'00"	17.21 C		Class B
PEG 32c DP 380239	PEG 32a DP 380239	ob146	274°48'00"	A DP 380239	0°00'00"	27.63 A	DP 380239	Class B
UNMK 10 DP 532918	UNMK 17 DP 586892	ob76	186°42'00"	A DP 532918	0°00'00"	12.64 C		Class B
UNMK 17 DP 586892	UNMK 29 DP 532918	ob178	186°42'00"	A DP 532918	0°00'00"	25.53 C		Class B
UNMK 17 DP 586892	UNMK 6 DP 586892	ob179	48°47'00"	C		4.17 C		Class B
PEG 27b DP 380239	UNMK 22 DP 532918	ob135	36°34'00"	A SO 7503	0°00'00"	54.49 A	DP 532918	Class B
UNMK 22 DP 532918	PEG 28a DP 380239	ob180	36°34'00"	A SO 7503	0°00'00"	103.14 A	DP 532918	Class B
PEG 29a DP 380239	UNMK 16 DP 532918	ob141	216°34'00"	A SO 7503	0°00'00"	100.95 A	DP 532918	Class B

Mark and Vector

Survey Number DP 586892

Meridional Circuit Hokitika 2000

From	To	Code	Bearing	Adpt Surv	Bearing Correction	Distance	Adpt Surv	Class
UNMK 16 DP 532918	PEG 27a DP 380239	ob182	216°34'00"	A SO 7503	0°00'00"	54.82 A	DP 532918	Class B
UNMK 22 DP 532918	UNMK 16 DP 532918	ob181	124°34'00"	A DP 532918	0°00'00"	20.13 A	DP 532918	Class B
UNMK 6 DP 586892	UNMK 18 DP 586892	ob171	78°09'00"	C		1.68 C		Class B
UNMK 18 DP 586892	UNMK 7 DP 586892	ob183	125°33'30"	C		33.85 C		Class B

Mark Name	Mark Condition	Description
IS 2a DP 586892		flush in seal
IT 1 DP 586892		down 0.45 in grass berm
IT 2 DP 586892		down 0.35, 3.5m from edge of formation
IT 3 DP 411672		down 0.3 on edge of sealed formation
IT 3 DP 532918		down 0.5m on edge of gravel formation
IT 3 DP 586892		down 0.3 on edge of gravel formation
IT 32 DP 380239		down 0.35 in paddock
IT 4 DP 532918		down 0.4 in gravel formation
IT 4 DP 586892		down 0.3 on edge of gravel formation
IT 41 DP 380239		down 0.3 on edge of sealed formation, 1m to fence
IT 5 DP 411672		down 0.3 in sealed formation
IT 5 DP 532918		down 0.5 in gravel formation
IT I LT 2775		down 0.3 on edge of sealed formation
IT II SO 9691		down 0.4, 0.7 to edge of gravel formation
PEG F DP 586892		In posn UNMK 10 DP 380239
PEG G DP 586892		In posn UNMK 33 DP 380239
IT 2 DP 411672	Searched For and Not Found	
IT 2 DP 532918	Searched For and Not Found	
IT 33 DP 380239	Searched For and Not Found	
PEG 3a DP 532918	Searched For and Not Found	
PEG 5b DP 411672	Searched For and Not Found	
PEG IIa DP 380239	Searched For and Not Found	

*** End of Report ***

Schedule / Memorandum

Land Registration District

Westland

Survey Number

LT 586892

Territorial Authority (the Council)

Westland District

Memorandum of Easements

Last Edited: 24 Mar 2023 08:19:46

<u>Purpose</u>	<u>Shown</u>	<u>Burdened Land</u> (<u>Servient Tenement</u>)	<u>Benefited Land</u> (<u>Dominant Tenement</u>)
Right of Way	A	Lot 2	Lot 2 DP 519431
	B	Lot 1	Lot 2 DP 519431
	G	Lot 1	Lot 2 DP 519431
	B	Lot 1	Lot 2
	G	Lot 1	Lot 2

Memorandum of Easements in Gross

Last Edited: 06 Jul 2023 10:31:33

<u>Purpose</u>	<u>Shown</u>	<u>Burdened Land</u> (<u>Servient Tenement</u>)	<u>Grantee</u>
Right to convey electricity	B	Lot 1	Westpower Limited

Schedule of Existing Easements

Last Edited: 23 Mar 2023 16:40:16

<u>Purpose</u>	<u>Shown</u>	<u>Burdened Land</u> (<u>Servient Tenement</u>)	<u>Creating Document Reference</u>
Right of Way	C	Lot 1	EI 11711824.3
	D	Lot 1	EI 11711824.3
	E	Lot 1	EI 8016341.2
	F	Lot 5	EI 7502942.10
	H, I	Lot 5	EI 7502942.10
	B	Lot 1	EI 11711824.3

Schedule of Existing Easements in Gross

Last Edited: 23 Mar 2023 16:40:09

<u>Purpose</u>	<u>Shown</u>	<u>Burdened Land</u> (<u>Servient Tenement</u>)	<u>Creating Document Reference</u>
Right to convey electricity	F	Lot 5	EI 7502942.11
	I	Lot 5	EI 11711824.4
	E	Lot 1	EI 8016341.3
Right to convey telecommunications and computer media	F	Lot 5	EI 7502942.12
	E	Lot 1	EI 8016341.4
Right to convey telecommunications	B, C, D	Lot 1	EI 11711824.5

Land Registration District

WESTLAND

Plan Number

LT 586892

Territorial Authority

Westland District Council

Schedule of Existing Easements to be Extinguished.

Purpose	Shown	Servient Tenement (Burdened Land)	Creating Document Reference
Right of Way	Marked A DP 380239	Part RS 1918	EI 7502942.10
Right of Way	Marked B DP 380239	Lot 6 DP 380239	EI 7502942.10
Right to Convey Electricity	Marked B DP 380239	Lot 6 DP 380239	EI 7502942.11
Right to Convey Telecommunications and computer media	Marked B DP 380239	Lot 6 DP 380239	EI 7502942.12
Right of Way	Area N DP 532918	Lot 4 DP 411672	EI 11711824.3
Right of Way	Marked F & G DP 411672	Lot 4 DP 411672	EI 7502942.10
Right to Convey Electricity	Marked F & G DP 411672	Lot 4 DP 411672	EI 7502942.11
Right to Convey Telecommunications and computer media	Marked F & G DP 411672	Lot 4 DP 411672	EI 7502942.12
Right of Way	Marked B, F & G DP 411672	Lot 4 DP 411672	EI 8016341.2
Right to Convey Electricity	Marked B DP 411672	Lot 4 DP 411672	EI 8016341.3
Right to Convey Telecommunications and computer media	Marked B DP 411672	Lot 4 DP 411672	EI 8016341.4

Land Registration District
WESTLAND

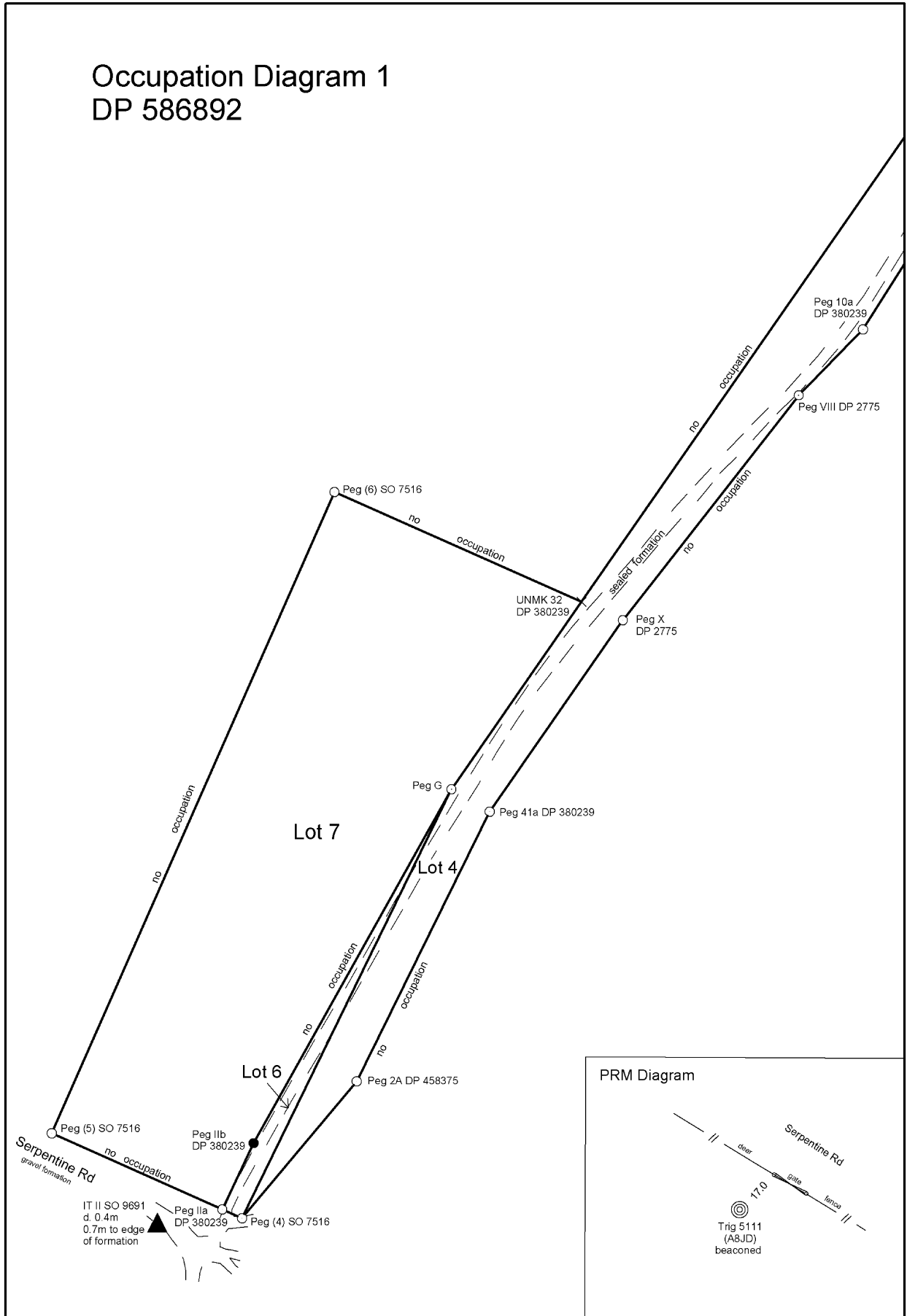
Plan Number
LT 586892

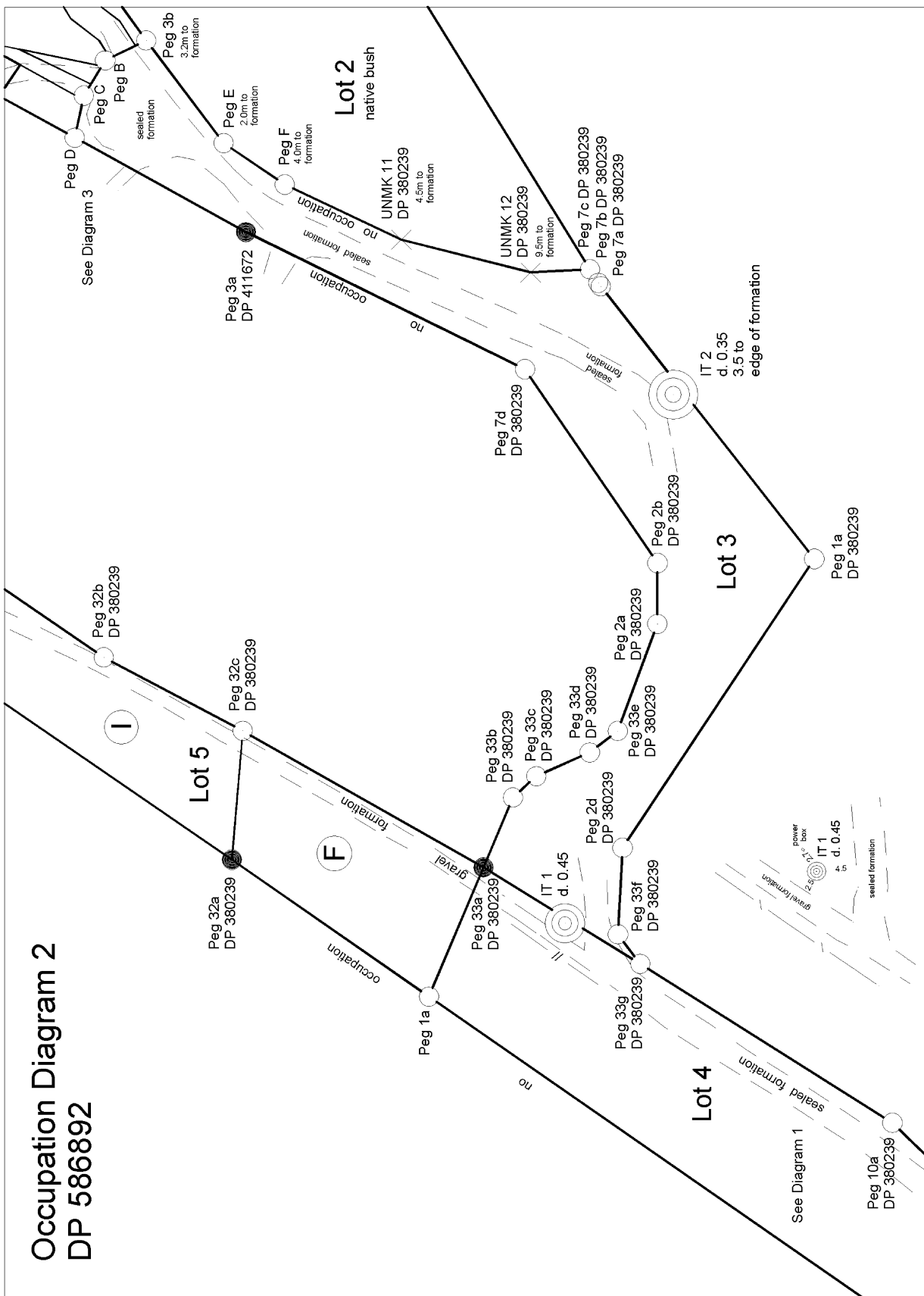
Territorial Authority
 Westland District Council

Schedule of Existing Easements to be Extinguished.			
Purpose	Shown	Servient Tenement (Burdened Land)	Creating Document Reference
Right of Way	Marked G DP 411672	Lot 4 DP 411672	EI 10624533.2
Right to Convey Electricity	Marked A DP 380239	Part RS 1918	EI 7502942.11
Right to Convey Telecommunications and computer media	Marked A DP 380239	Part RS 1918	EI 7502942.12

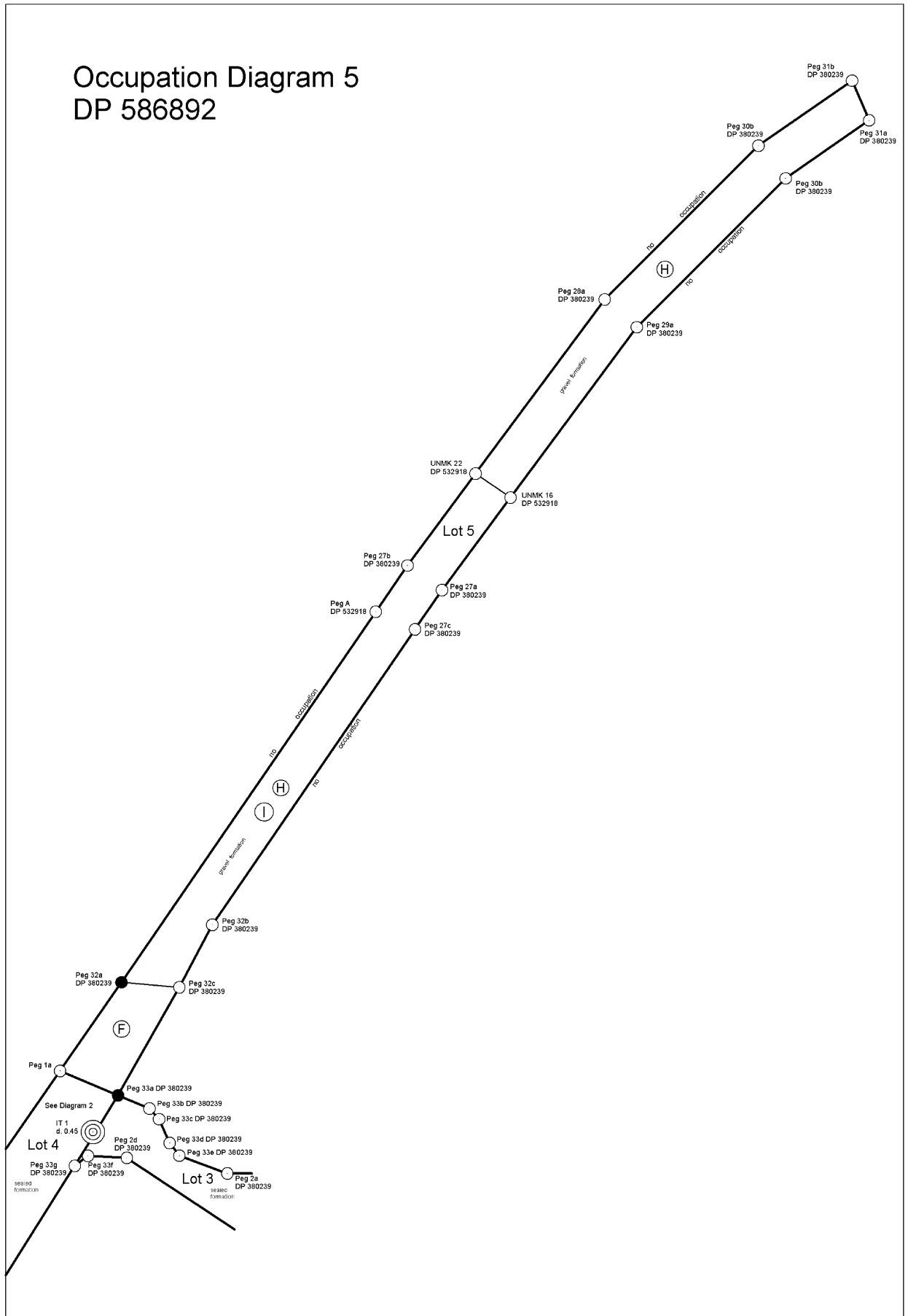
Occupation Diagram 1

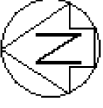
DP 586892



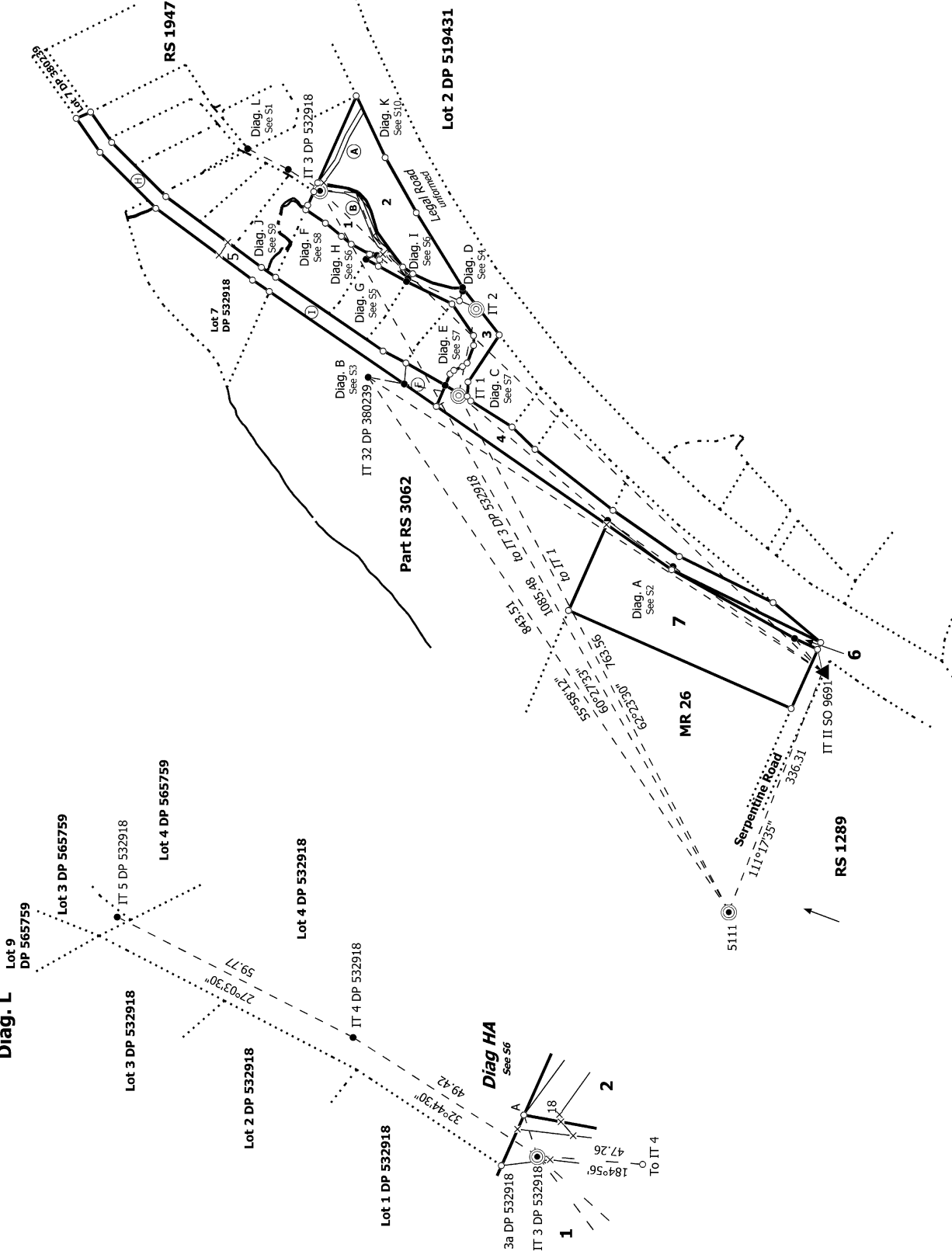


Occupation Diagram 5 DP 586892





Diag. L



S 1/10

Land District: Westland

Digitally Generated Plan

Generated on: 27/10/2023 11:24:46am Page 19 of 30

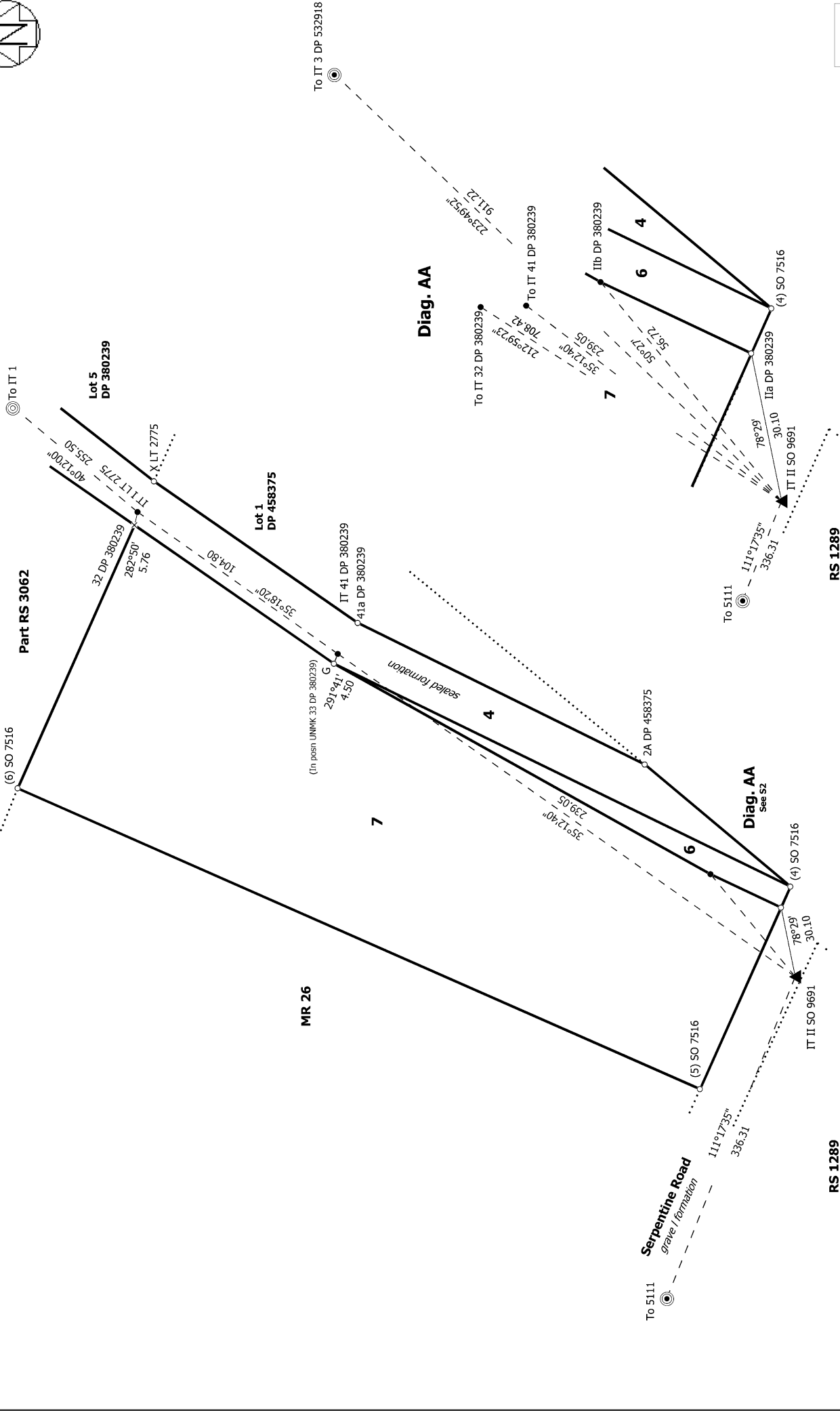
Lots 1 to 7 being Subdivision of Lot 4 DP 411672, Section 1 SO 413150, Lot 8 DP 380239, Lot 6 DP 380239, and Pt RS 1918

Surveyor: Lynda Maree Watson
Firm: Coastwide Surveys Ltd
Date of Survey: 13/01/2023

Record of Survey
LT 586892
Approved on: 27/10/2023



Diag. A
Part RS 3062



S 2/10

Land District: Westland
Digitally Generated Plan
 Generated on: 27/10/2023 11:24:46am Page 20 of 30

Lots 1 to 7 being Subdivision of Lot 4 DP 411672, Section 1 SO 413150, Lot 8 DP 380239, Lot 6 DP 380239, and Pt RS 1918

Surveyor: Lynda Maree Watson
 Firm: Coastwide Surveys Ltd
 Date of Survey: 13/01/2023

Record of Survey
 LT 586892
 Approved on: 27/10/2023

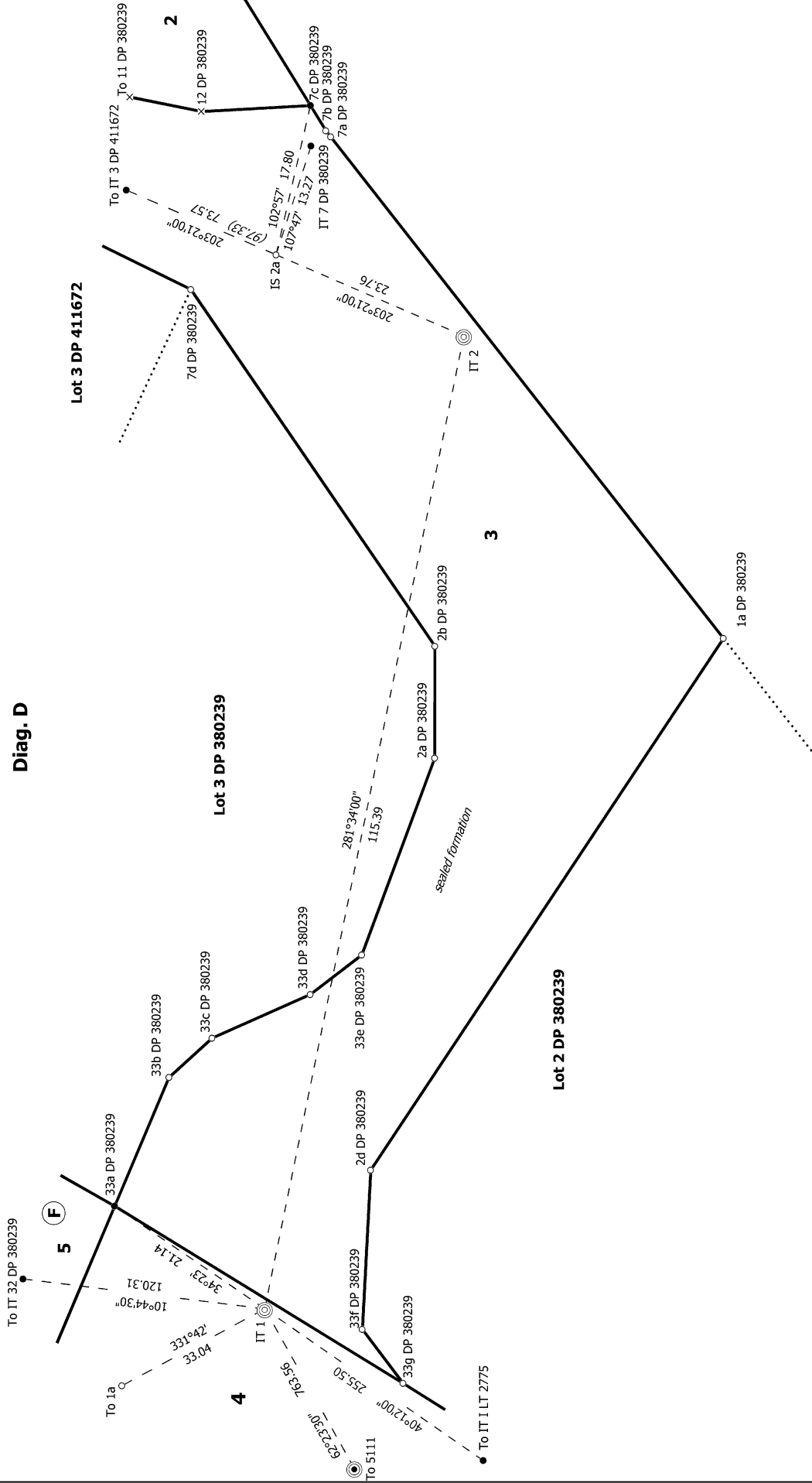


Diag. D

Lot 3 DP 411672

Lot 3 DP 380239

Lot 2 DP 380239



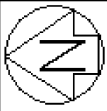
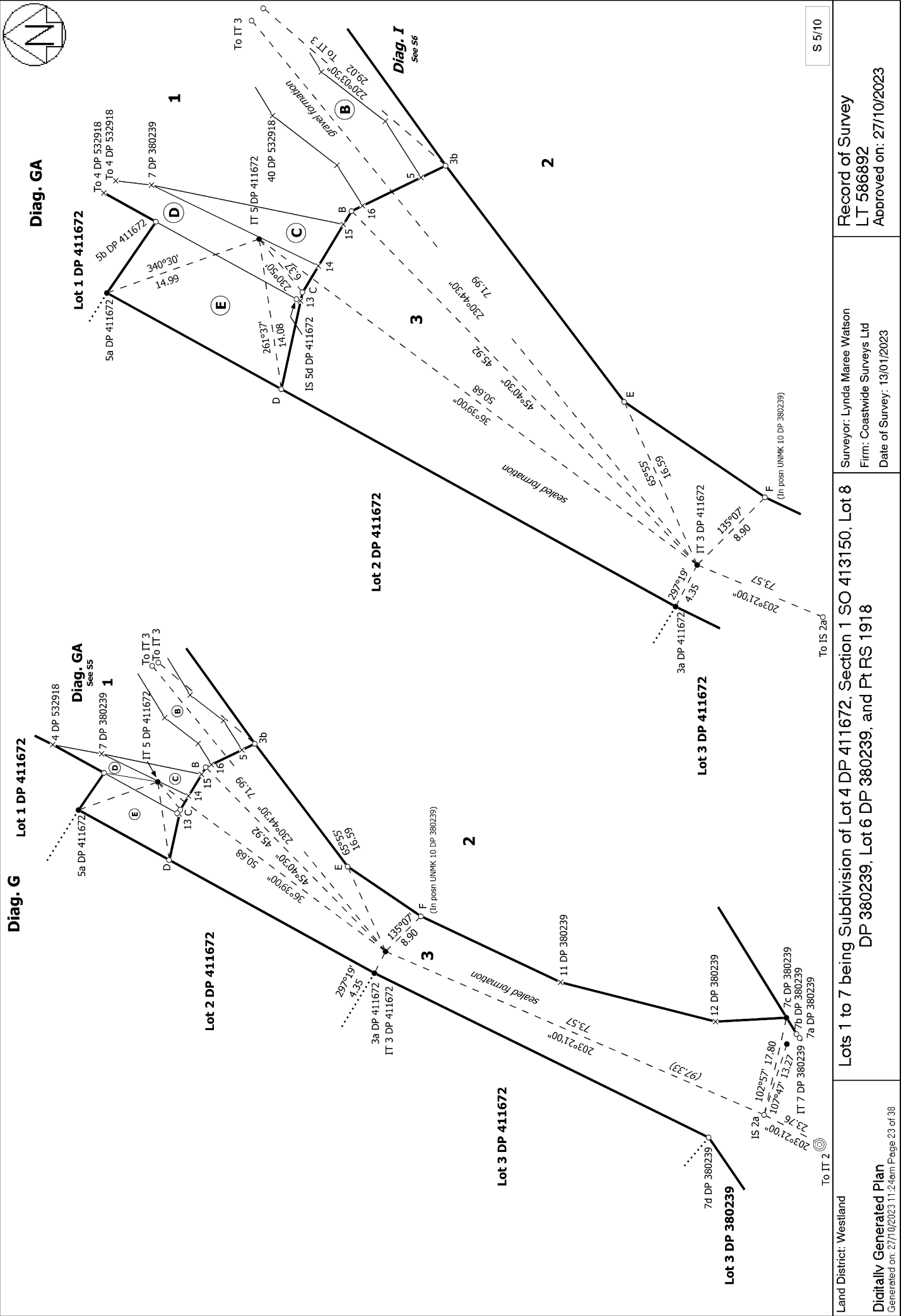
S 4/10

Record of Survey
LT 586892
Approved on: 27/10/2023

Surveyor: Lynda Maree Watson
Firm: Coastwide Surveys Ltd
Date of Survey: 13/01/2023

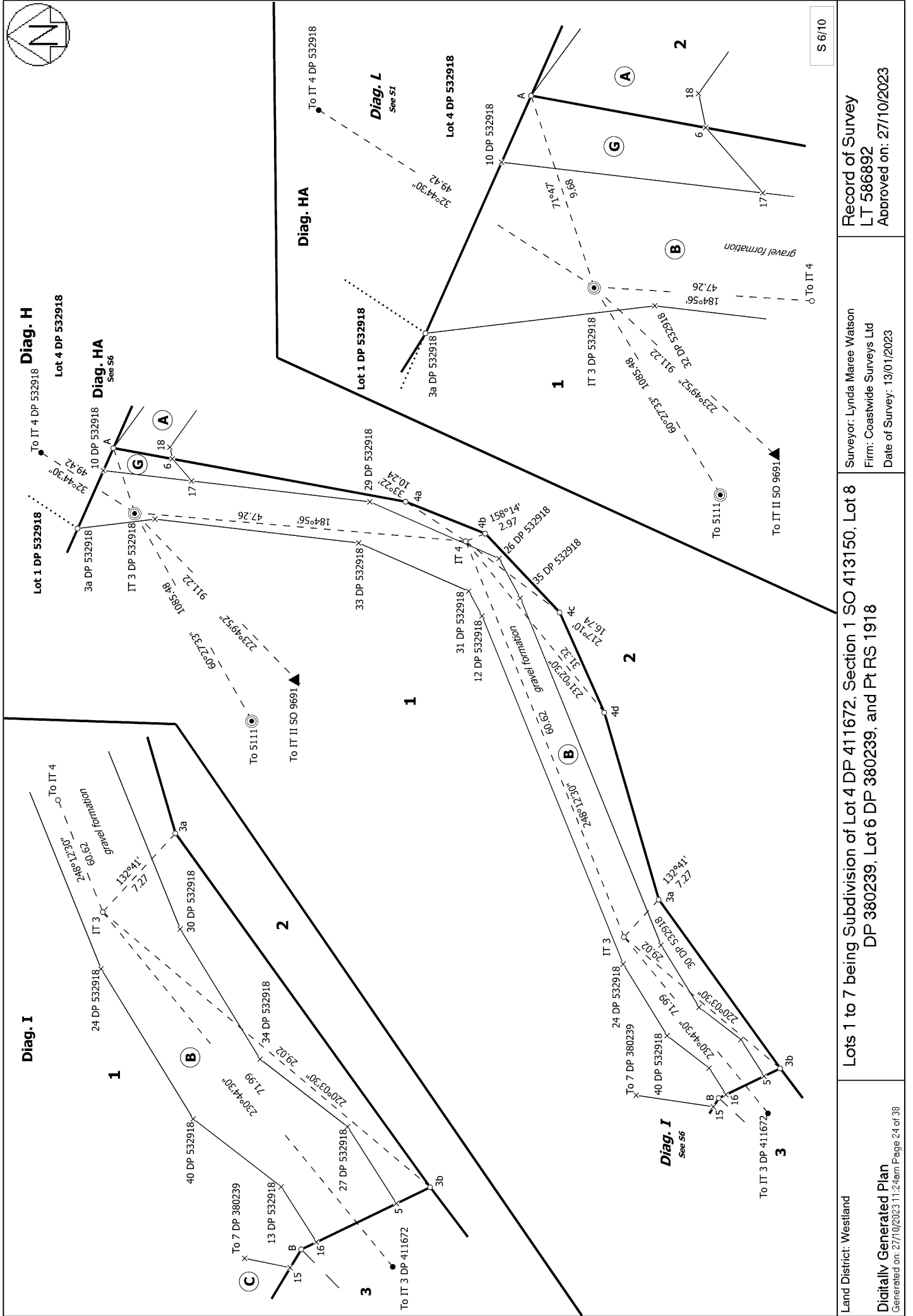
Lots 1 to 7 being Subdivision of Lot 4 DP 411672, Section 1 SO 413150, Lot 8
DP 380239, Lot 6 DP 380239, and Pt RS 1918

Land District: Westland
Digitally Generated Plan
Generated on: 27/10/2023 11:24:46am Page 22 of 38



S 5/10

<p>Record of Survey LT 586892 Approved on: 27/10/2023</p>	<p>Surveyor: Lynda Maree Watson Firm: Coastwide Surveys Ltd Date of Survey: 13/01/2023</p>	<p>Lots 1 to 7 being Subdivision of Lot 4 DP 411672, Section 1 SO 413150, Lot 8 DP 380239, Lot 6 DP 380239, and Pt RS 1918</p>	<p>Land District: Westland Digitally Generated Plan Generated on: 27/10/2023 11:24am Page 23 of 38</p>
---	--	--	---



S 6/10

Land District: Westland
 Digitally Generated Plan
 Generated on: 27/10/2023 11:24:46 AM Page 24 of 30

Lots 1 to 7 being Subdivision of Lot 4 DP 411672, Section 1 SO 413150, Lot 8 DP 380239, Lot 6 DP 380239, and Pt RS 1918

Surveyor: Lynda Maree Watson
 Firm: Coastwide Surveys Ltd
 Date of Survey: 13/01/2023

Record of Survey
 LT 586892
 Approved on: 27/10/2023



**Adoptions
Diag. J**

Lot 5 DP 532918

Diag. JA
Sec 9

Lot 1 DP 532918

40a DP 380239
b SO 413150

Lot 4 DP 532918

3a DP 532918

To IT 3 DP 532918

Diag K
See S10

Lot 1 DP 411672

14a DP 411672

39°37'
27.15

10b DP 411672

38°31'
16.54

10a DP 411672

28°50'
16.76

4 DP 532918

Diag F
See S8

1

Diag. JA

Lot 5 DP 532918

13a DP 411672

A SO 413150

Lot 1 DP 411672

1 DP 380239

Lot 1 DP 532918

34°02'
31.23

To 14a DP 411672

b SO 413150

1

true left bank of stream
Adpt SO 413150

113°57'
2.00

113°57'
1.04

113°57'
2.67

40a DP 380239

113°57'
19.46

To 3a DP 532918

Land District: Westland

Digitally Generated Plan

Generated on: 27/10/2023 11:24am | Page 27 of 30

**Lots 1 to 7 being Subdivision of Lot 4 DP 411672, Section 1 SO 413150, Lot 8
DP 380239, Lot 6 DP 380239, and Pt RS 1918**

Surveyor: Lynda Maree Watson
Firm: Coastwide Surveys Ltd
Date of Survey: 13/01/2023

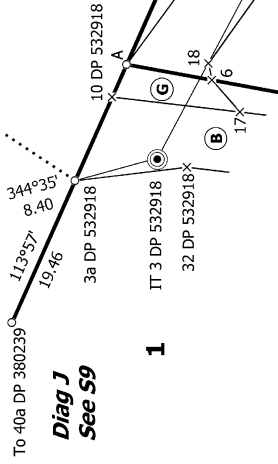
**Record of Survey
LT 586892
Approved on: 27/10/2023**

S 9/10



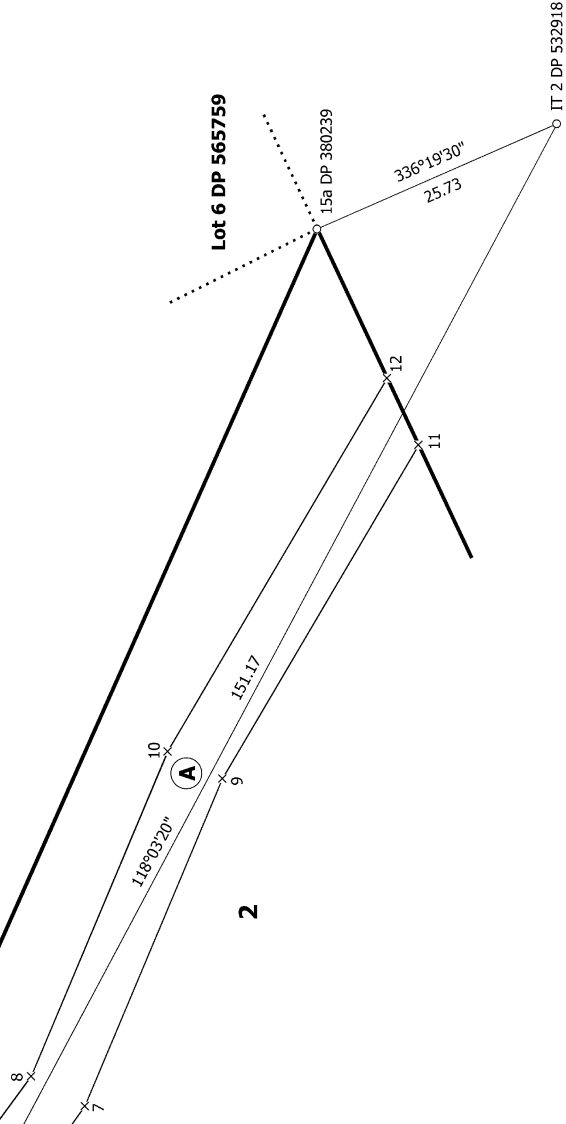
Adoptions
Diag. K

Lot 1 DP 532918



1

Lot 4 DP 532918



2

Lot 6 DP 565759

15a DP 380239

IT 2 DP 532918

Land District: Westland

Digitally Generated Plan

Generated on: 27/10/2023 11:24:46am Page 28 of 38

Lots 1 to 7 being Subdivision of Lot 4 DP 411672, Section 1 SO 413150, Lot 8 DP 380239, Lot 6 DP 380239, and Pt RS 1918

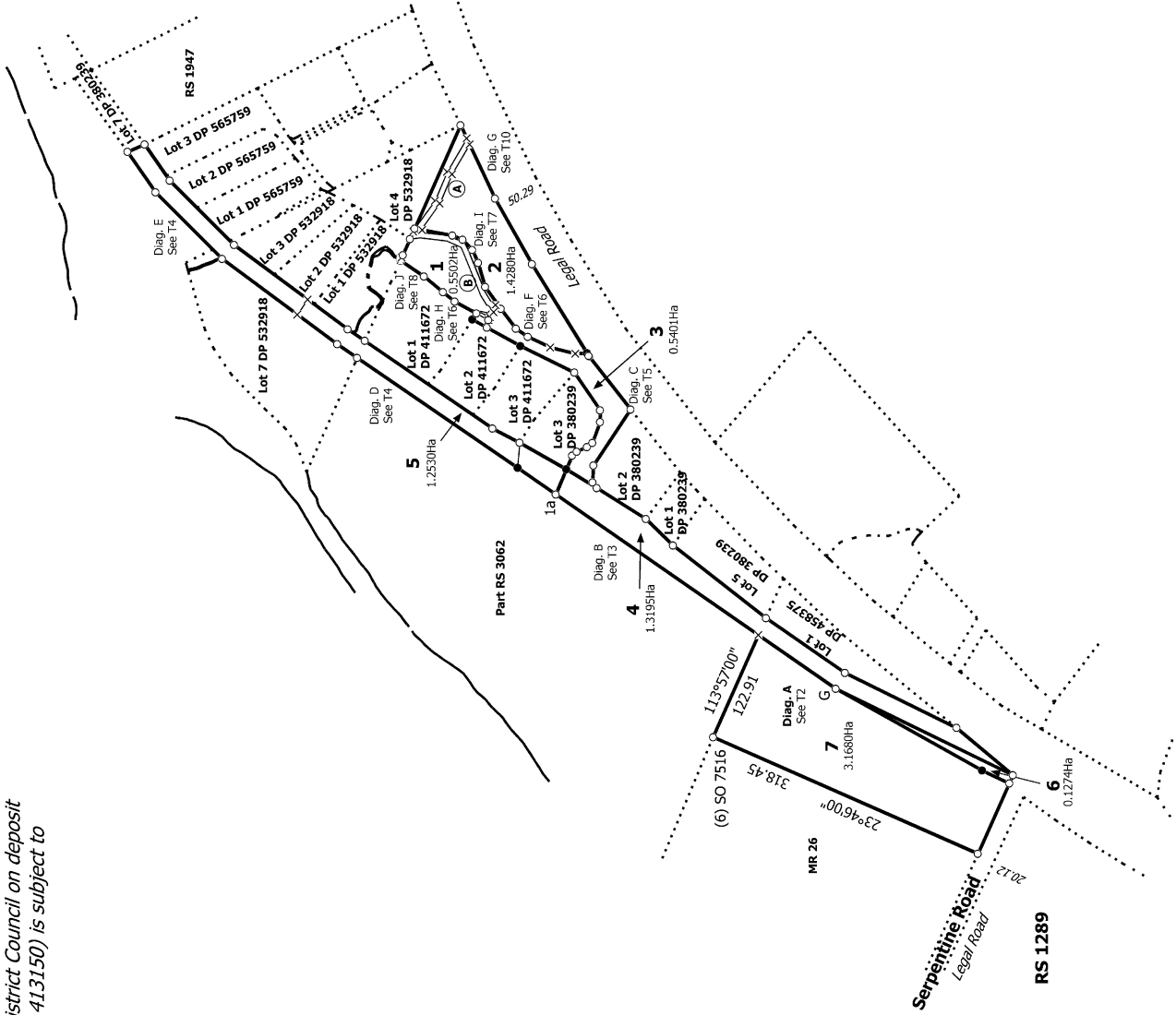
Surveyor: Lynda Maree Watson
Firm: Coastwide Surveys Ltd
Date of Survey: 13/01/2023

Record of Survey
LT 586892
Approved on: 27/10/2023

S 10/10



Notes:
 1. Lots 3, 4 & 6 to vest as Road in Westland District Council on deposit
 2. Part of Lot 1 hereon (formerly Section 1 SO 413150) is subject to Pt IVA Conservation Act 1987



T 1/10

Land District: Westland
 Digitally Generated Plan
 Generated on: 27/10/2023 11:24am Page 29 of 30

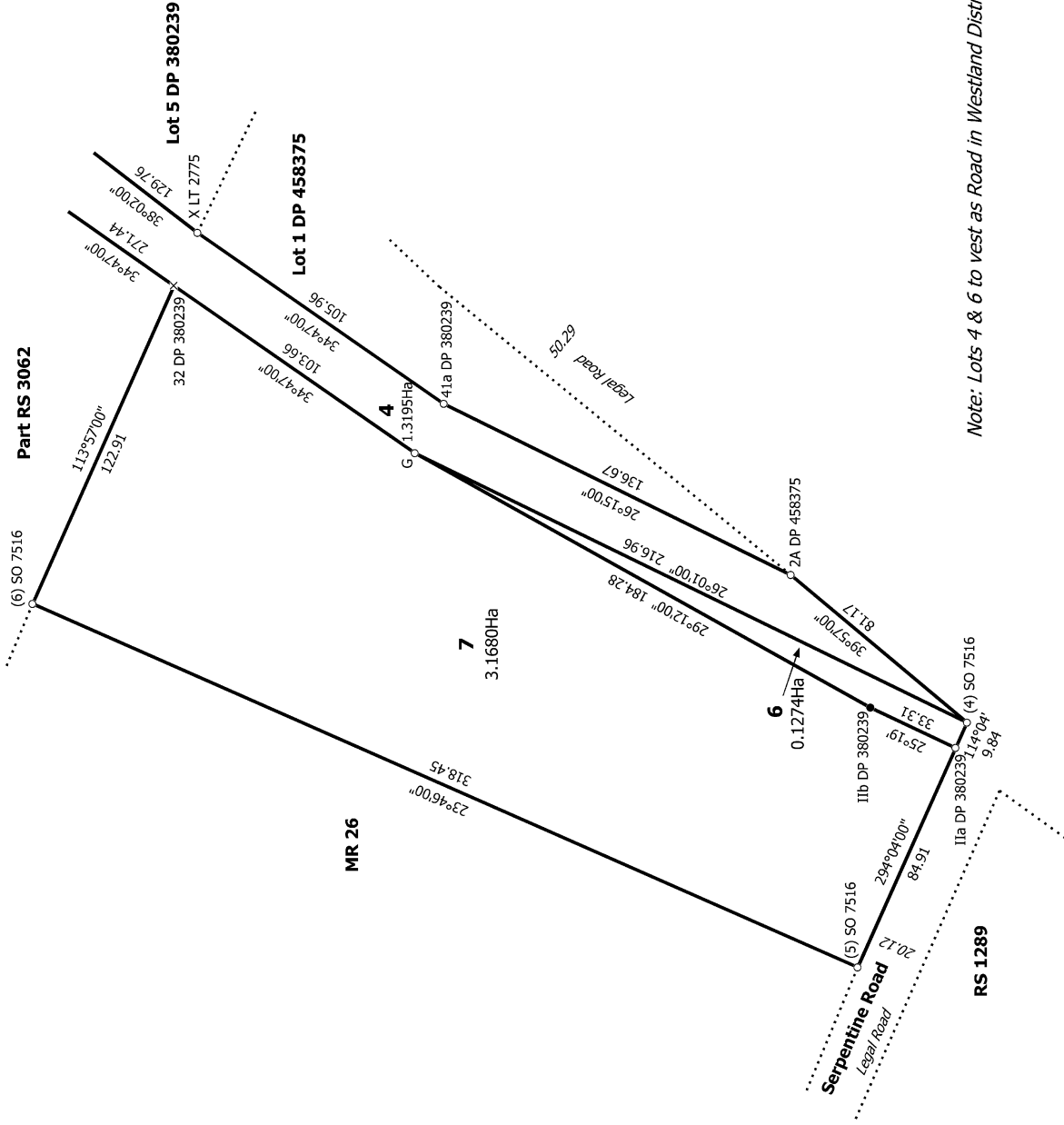
Lots 1 to 7 being Subdivision of Lot 4 DP 411672, Section 1 SO 413150, Lot 8 DP 380239, Lot 6 DP 380239, and Pt RS 1918

Surveyor: Lynda Maree Watson
 Firm: Coastwide Surveys Ltd
 Date of Survey: 13/01/2023

Record of Survey
 LT 586892
 Approved on: 27/10/2023



Diag. A



Note: Lots 4 & 6 to vest as Road in Westland District Council on deposit

T 2/10

Land District: Westland

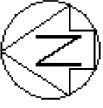
Digitally Generated Plan

Generated on: 27/10/2023 11:24am Page 30 of 30

Lots 1 to 7 being Subdivision of Lot 4 DP 411672, Section 1 SO 413150, Lot 8 DP 380239, Lot 6 DP 380239, and Pt RS 1918

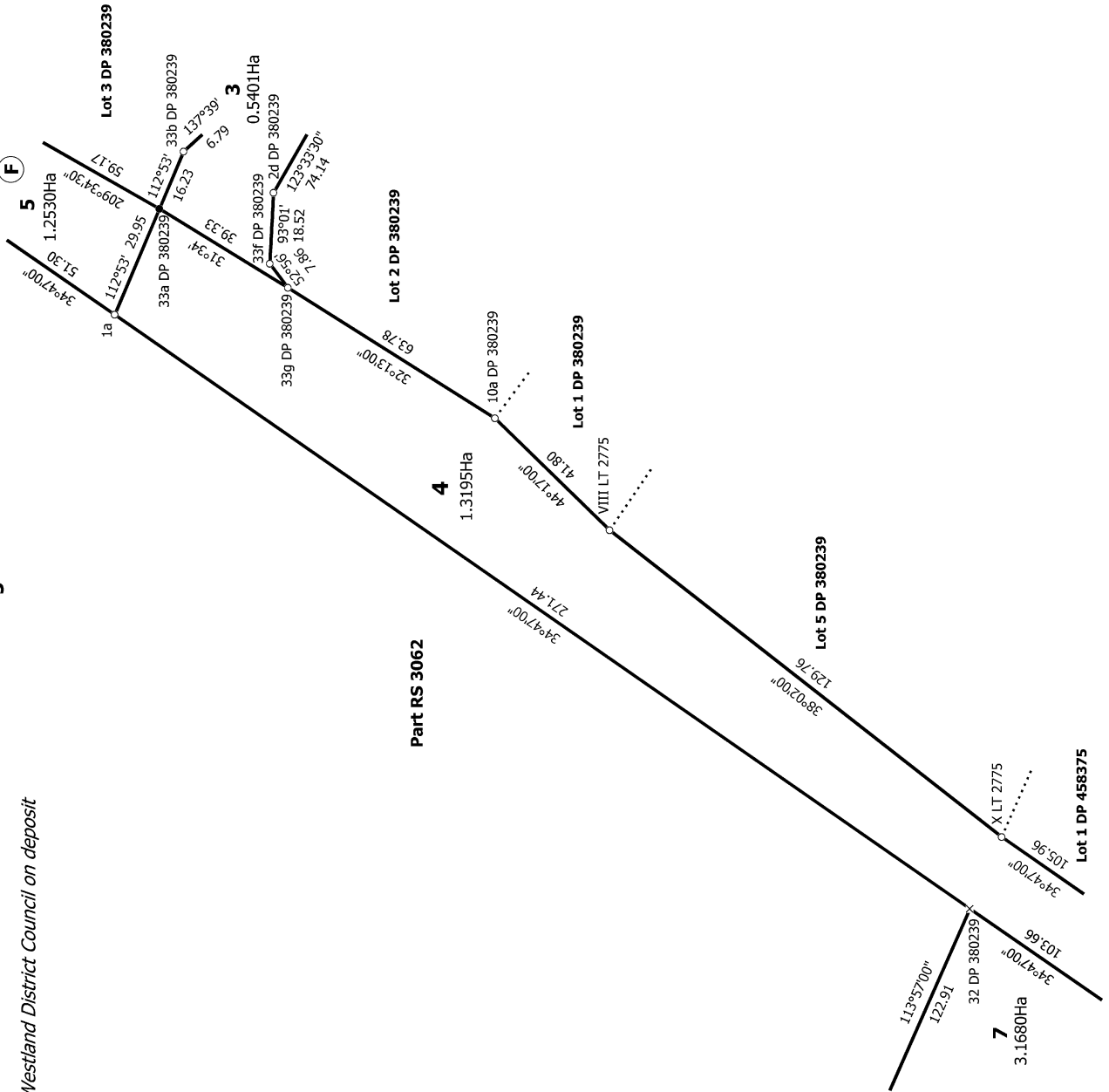
Surveyor: Lynda Maree Watson
Firm: Coastwide Surveys Ltd
Date of Survey: 13/01/2023

Record of Survey
LT 586892
Approved on: 27/10/2023



Note: Lot 4 to vest as Road in Westland District Council on deposit

Diag. B



T 3/10

Land District: Westland

Digitally Generated Plan
Generated on: 27/10/2023 11:24am Page 31 of 38

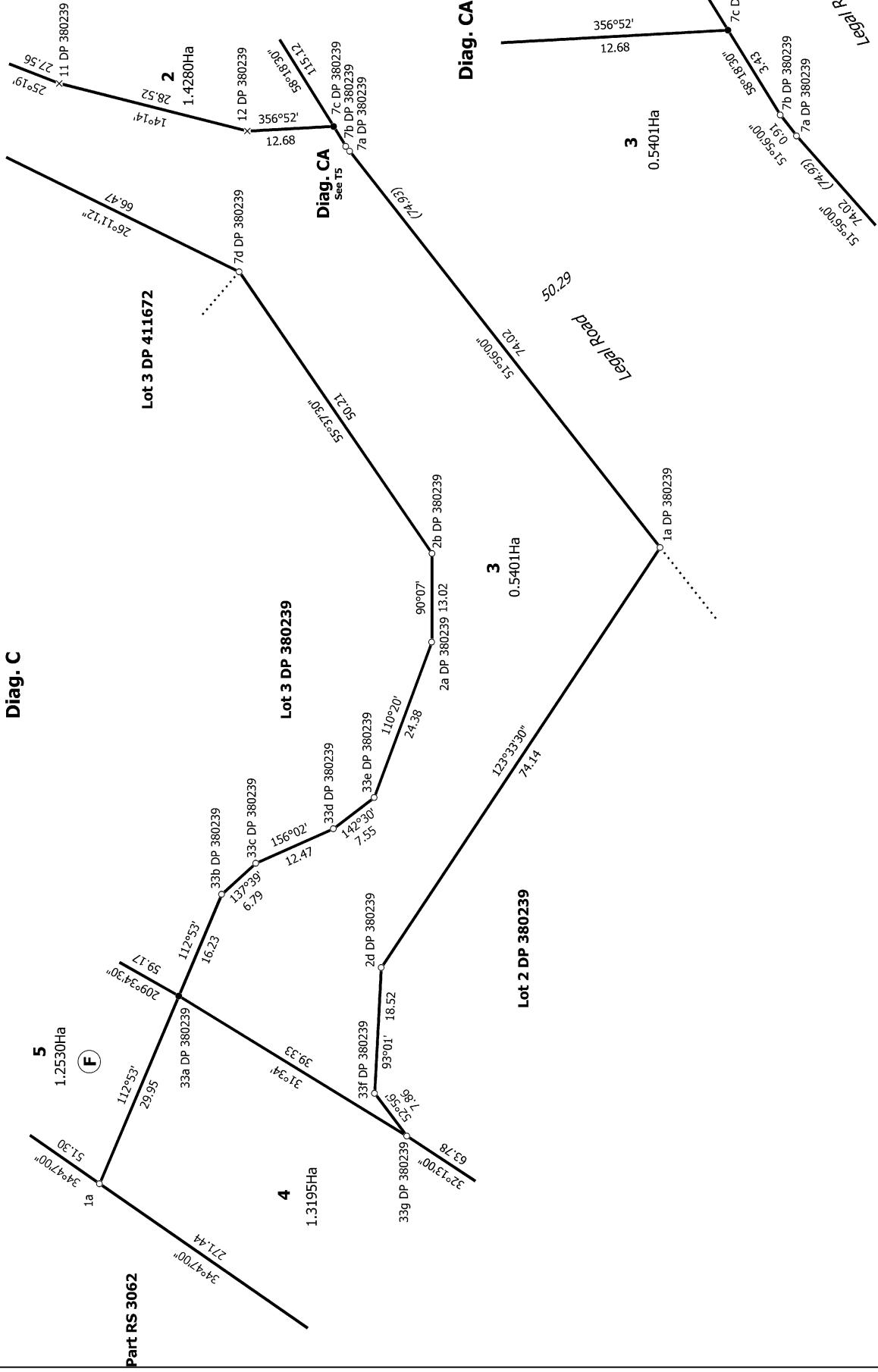
Lots 1 to 7 being Subdivision of Lot 4 DP 411672, Section 1 SO 413150, Lot 8 DP 380239, Lot 6 DP 380239, and Pt RS 1918

Surveyor: Lynda Maree Watson
Firm: Coastwide Surveys Ltd
Date of Survey: 13/01/2023

Record of Survey
LT 586892
Approved on: 27/10/2023



Diag. C



Note: Lot 3 to vest as Road in Westland District Council on deposit

T 5/10

Land District: Westland

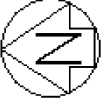
Digitally Generated Plan

Generated on: 27/10/2023 11:24:46am | Page 33 of 38

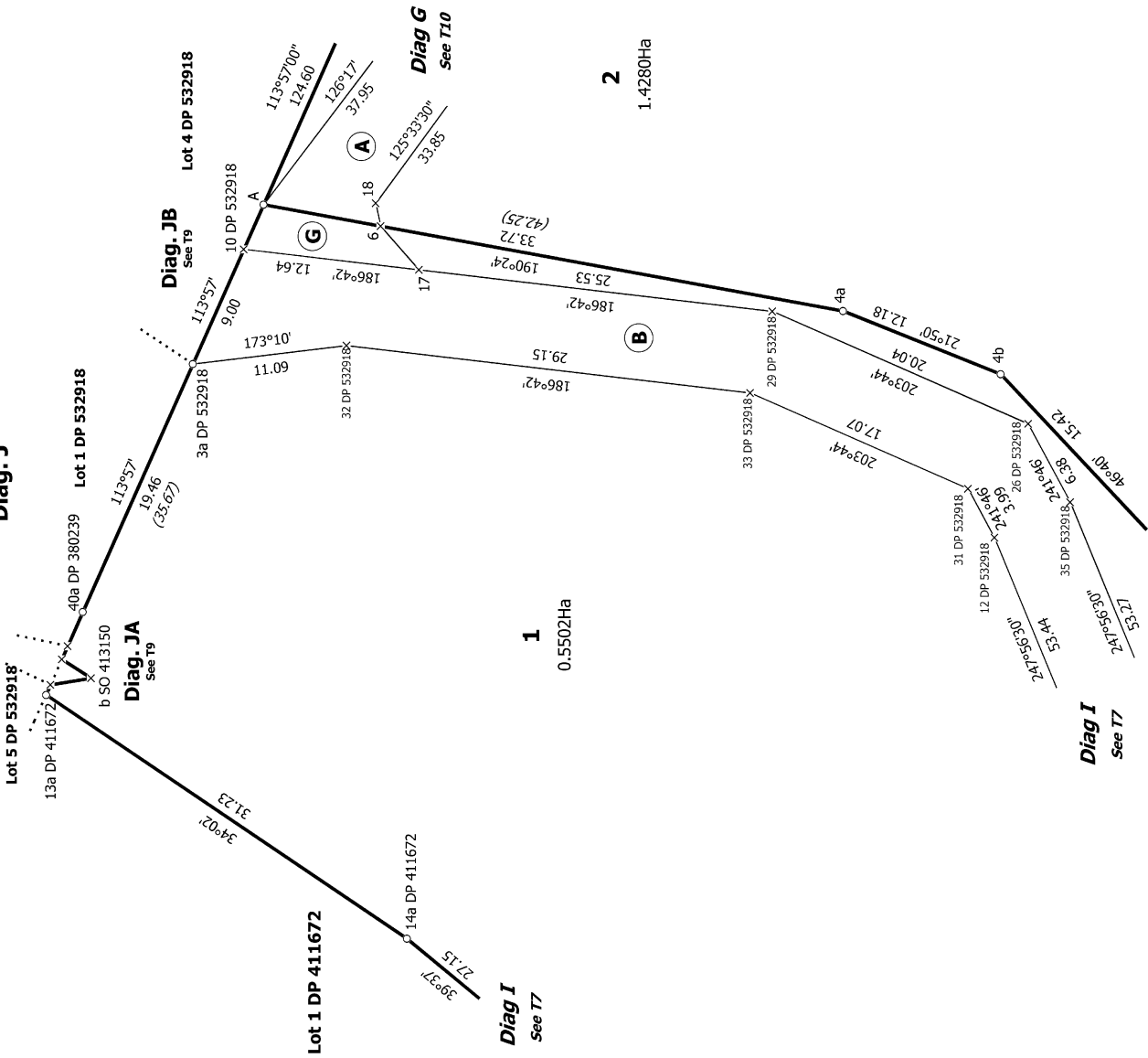
Lots 1 to 7 being Subdivision of Lot 4 DP 411672, Section 1 SO 413150, Lot 8 DP 380239, Lot 6 DP 380239, and Pt RS 1918

Surveyor: Lynda Maree Watson
Firm: Coastwide Surveys Ltd
Date of Survey: 13/01/2023

Record of Survey
LT 586892
Approved on: 27/10/2023



Diag. J

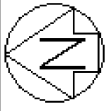


T 8/10

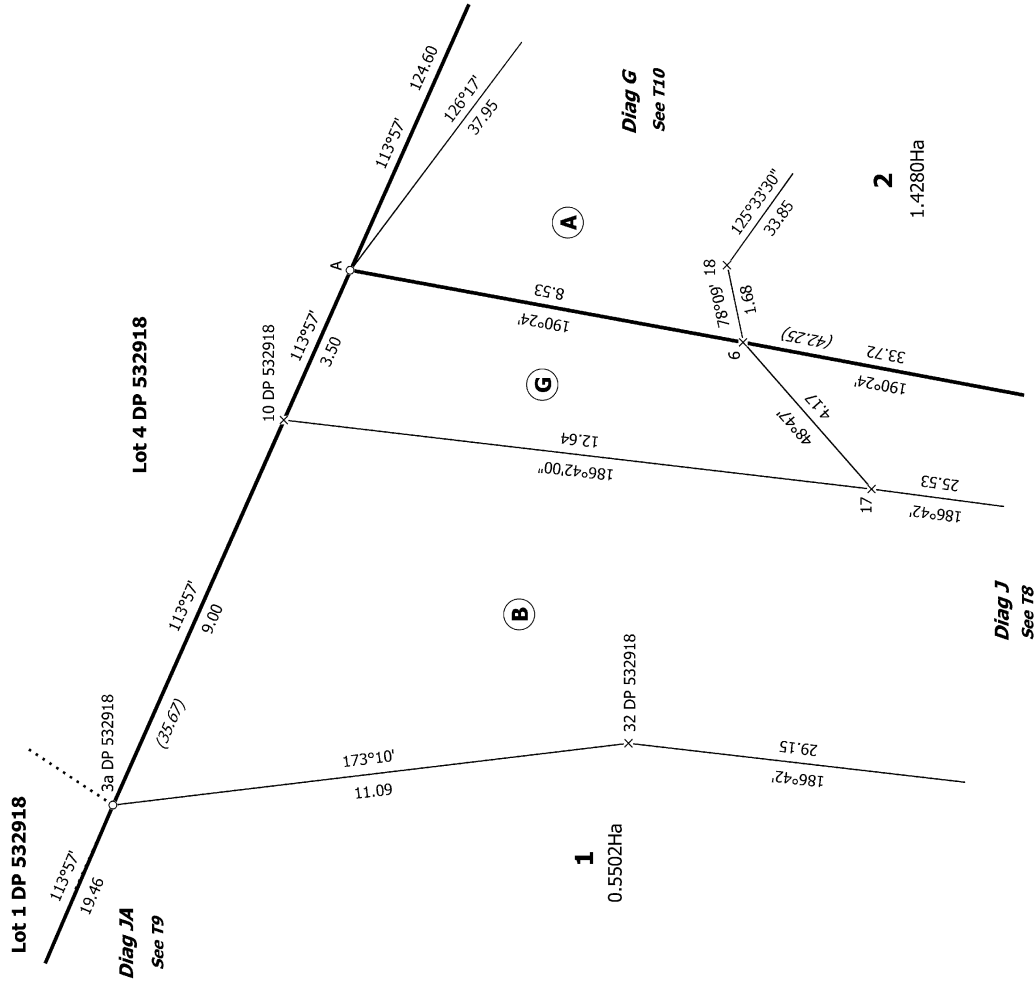
Lots 1 to 7 being Subdivision of Lot 4 DP 411672, Section 1 SO 413150, Lot 8 DP 380239, Lot 6 DP 380239, and Pt RS 1918

Surveyor: Lynda Maree Watson
 Firm: Coastwide Surveys Ltd
 Date of Survey: 13/01/2023

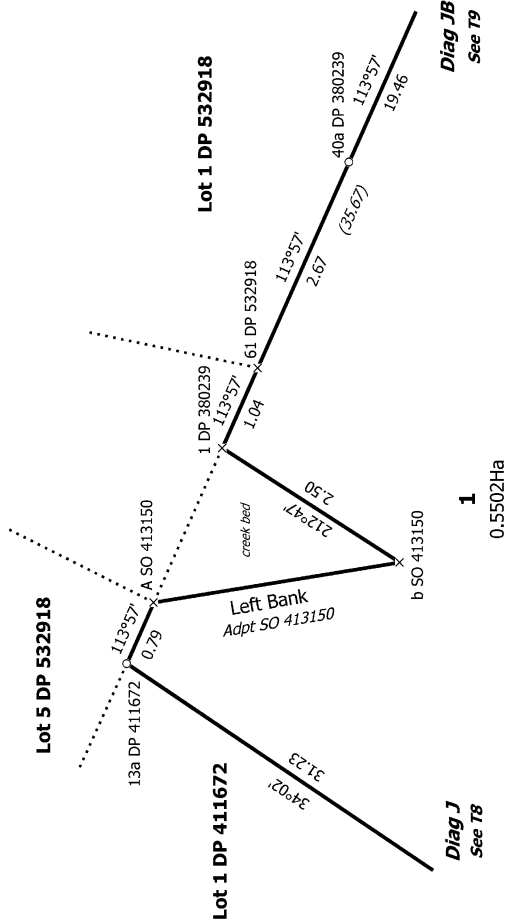
Record of Survey
 LT 586892
 Approved on: 27/10/2023



Diag. JB



Diag. JA



T 9/10

Land District: Westland

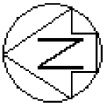
Digitally Generated Plan

Generated on: 27/10/2023 11:24am Page 37 of 38

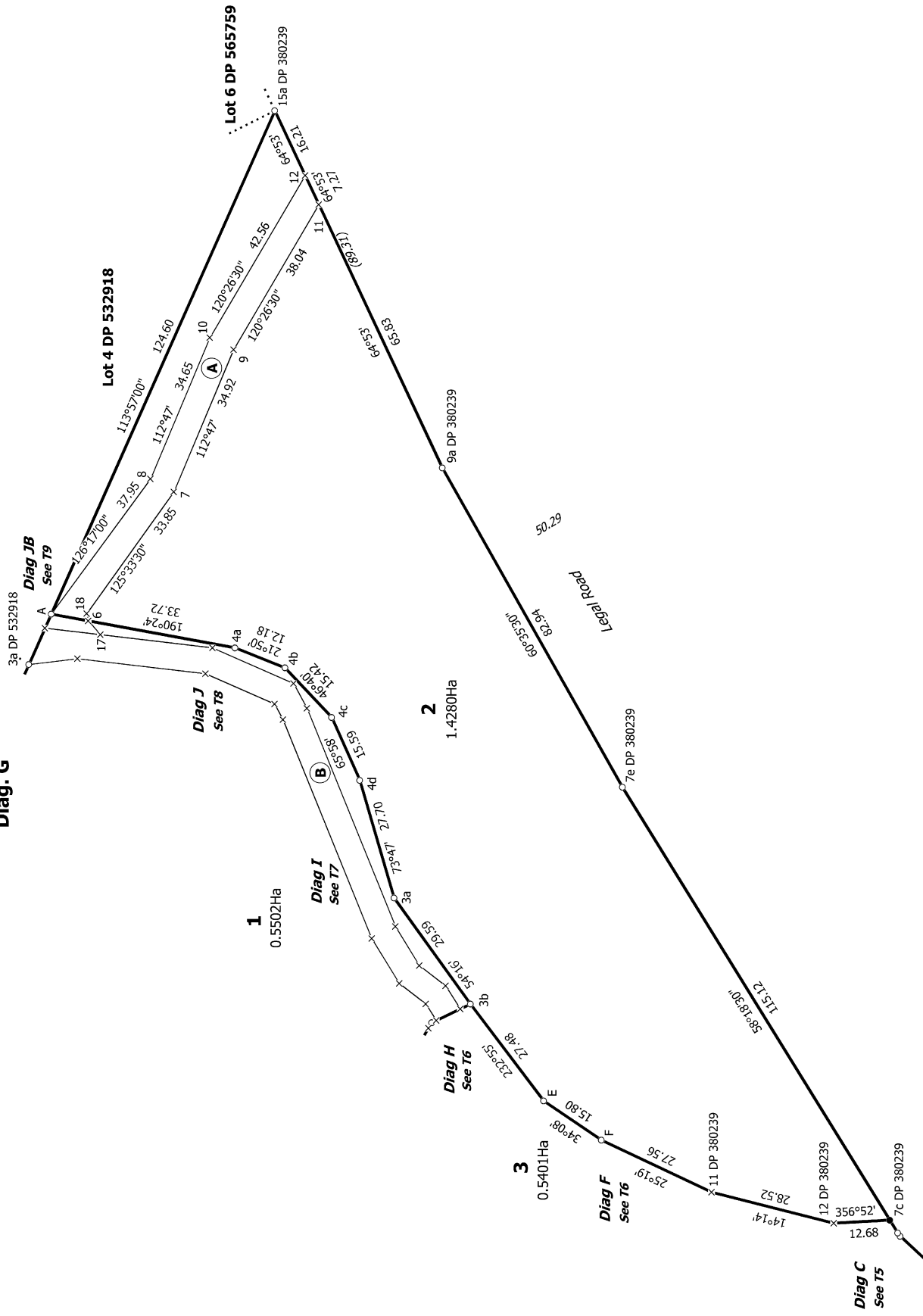
Lots 1 to 7 being Subdivision of Lot 4 DP 411672, Section 1 SO 413150, Lot 8 DP 380239, Lot 6 DP 380239, and Pt RS 1918

Surveyor: Lynda Maree Watson
Firm: Coastwide Surveys Ltd
Date of Survey: 13/01/2023

Record of Survey
LT 586892
Approved on: 27/10/2023



Diag. G



T 10/10

Land District: Westland

Digitally Generated Plan
Generated on: 27/10/2023 11:24am Page 38 of 38

Lots 1 to 7 being Subdivision of Lot 4 DP 411672, Section 1 SO 413150, Lot 8 DP 380239, Lot 6 DP 380239, and Pt RS 1918

Surveyor: Lynda Maree Watson
Firm: Coastwide Surveys Ltd
Date of Survey: 13/01/2023

Record of Survey
LT 586892
Approved on: 27/10/2023