



# Record of Survey - LT 586220

---

**Survey Number** LT 586220  
**Surveyor Reference** N1025B REM Farming Ltd  
**Surveyor** Ben Antonie Smith  
**Survey Firm** Newton & Associates Ltd  
**Surveyor Declaration** I Ben Antonie Smith, being a licensed cadastral surveyor, certify that--  
(a) this dataset provided by me and its related survey are accurate, correct and in accordance with the Cadastral Survey Act 2002 and Cadastral Survey Rules 2021; and  
(b) the survey was undertaken by me or under my personal direction.  
Declared on 28 Feb 2024 08:33 AM

---

## Survey Details

**Dataset Description** Lot 1 Being Accretion to Lot 10 DP 572823  
**Purpose** Application  
**Status** Approved as to Survey **Type** Survey  
**Land District** Nelson **Survey Class** Class B  
**Meridional Circuit** Grey 2000 **Vertical Datum** None

---

## Survey Dates

**Surveyed Date** 13/12/2022 **Certified Date** 28/02/2024  
**Submitted Date** 28/02/2024 08:33:36 **Survey Approval Date** 28/03/2024  
**Deposit Date**

---

## Referenced Surveys

Survey Number	Land District	Bearing Correction
DP 13807	Nelson	0°00'00"
SO 8125	Nelson	0°00'00"
DP 572823	Nelson	0°00'00"

---

## Territorial Authorities

Tasman District

---

## Comprised In

RT 1056399

---

## Created Parcels

Parcels	Parcel Intent	Area	RT Reference
Area V Deposited Plan 586220	Easement		
Lot 1 Deposited Plan 586220	Fee Simple Title	119.1700 Ha	1125656
<b>Total Area</b>		119.1700 Ha	

---

# Mark and Vector

Survey Number DP 586220

Meridional Circuit Grey 2000

From	To	Code	Bearing	Adpt Surv	Bearing Correction	Distance	Adpt Surv	Class
4011	IT 26 DP 572823	ob1	55°43'45" M			291.25 M		
IT 26 DP 572823	IT 27 DP 572823	ob6	31°57'20" M			560.87 M		
IT 27 DP 572823	IT 28 DP 572823	ob12	34°51'00" M			389.15 M		
IT 28 DP 572823	IT 29 DP 572823	ob47	341°18'05" M			809.73 M		
IT 29 DP 572823	IT XXII DP 13807	ob44	9°22'13" M			862.69 M		
IT XXII DP 13807	IT 7 DP 572823	ob61	206°59'25" M			740.20 M		
IT 7 DP 572823	IT 6 DP 572823	ob48	209°42'20" M			758.24 M		
IT 6 DP 572823	IT 5 DP 572823	ob30	176°25'33" M			1,078.72 M		
IT 5 DP 572823	IT 4 DP 572823	ob9	195°49'00" M			295.69 M		
IT 4 DP 572823	4011	ob29	39°35'10" M			132.21 M		
IT 26 DP 572823	UNMK 175 DP 572823	ob7	106°15'50" A	DP 572823	0°00'00"	225.93 A	DP 572823	
IT 29 DP 572823	UNMK 179 DP 572823	ob45	114°31'00" A	DP 572823	0°00'00"	331.58 A	DP 572823	
4011	IT 3 DP 572823	ob2	18°23'03" M			442.62 M		
IT 3 DP 572823	IT XXIV DP 13807	ob4	53°13'50" M			319.21 M		
IT XXIV DP 13807	IT 27 DP 572823	ob10	78°34'00" M			145.10 M		
IT XXIV DP 13807	IT XXIII DP 13807	ob11	27°56'00" M			355.02 M		
IT XXIII DP 13807	IT XXII DP 13807	ob42	2°44'29" M			1,654.56 M		
IT XXIII DP 13807	IT PIPE SO 8125	ob43	118°46'30" A	DP 13807	0°00'00"	92.94 A	DP 13807	
IT PIPE SO 8125	PEG XIV SO 8125	ob5	109°14'30" A	SO 8125	0°00'00"	64.94 A	SO 8125	
PEG XIV SO 8125	PEG XV SO 8125	ob17	221°43'30" A	SO 8125	0°00'00"	195.25 A	SO 8125	
PEG XV SO 8125	PEG XVI SO 8125	ob19	211°16'00" A	SO 8125	0°00'00"	300.67 A	SO 8125	
PEG XVI SO 8125	PEG XVII SO 8125	ob20	167°27'30" A	SO 8125	0°00'00"	296.68 A	SO 8125	
PEG XVII SO 8125	PEG XVIII SO 8125	ob22	201°13'00" A	SO 8125	0°00'00"	224.46 A	SO 8125	
PEG XVIII SO 8125	PEG XIX SO 8125	ob21	220°25'00" A	SO 8125	0°00'00"	211.15 A	SO 8125	
PEG XIX SO 8125	PEG XX SO 8125	ob14	240°08'00" A	SO 8125	0°00'00"	94.79 A	SO 8125	
PEG XX SO 8125	PEG XXI SO 8125	ob15	251°29'30" A	SO 8125	0°00'00"	360.94 A	SO 8125	
PEG XXI SO 8125	UNMK 166 DP 572823	ob27	19°38'00" A	SO 8125	0°00'00"	33.36 A	DP 572823	

# Mark and Vector

Survey Number DP 586220

Meridional Circuit Grey 2000

From	To	Code	Bearing	Adpt Surv	Bearing Correction	Distance	Adpt Surv	Class
UNMK 166 DP 572823	PEG SO 8125	ob28	19°38'00"	A SO 8125	0°00'00"	90.00 A	DP 572823	Class BD
PEG SO 8125	PEG SO 8125	ob25	305°36'00"	A SO 8125	0°00'00"	36.79 A	SO 8125	Class B
PEG SO 8125	PEG SO 8125	ob23	305°36'00"	A SO 8125	0°00'00"	20.12 A	SO 8125	
PEG SO 8125	POST 78 DP 572823	ob24	11°53'40"	A DP 572823	0°00'00"	36.19 A	DP 572823	
POST 78 DP 572823	IT 4 DP 572823	ob26	42°36'50"	A DP 572823	0°00'00"	106.92 A	DP 572823	
PEG XIV SO 8125	PEG XIII SO 8125	ob18	14°54'00"	A SO 8125	0°00'00"	392.84 A	SO 8125	
PEG XIII SO 8125	PEG XII SO 8125	ob32	10°14'00"	A SO 8125	0°00'00"	353.15 A	SO 8125	
PEG XII SO 8125	PEG XI SO 8125	ob31	330°49'00"	A SO 8125	0°00'00"	198.21 A	SO 8125	
PEG XI SO 8125	PEG X SO 8125	ob41	328°15'00"	A SO 8125	0°00'00"	124.76 A	SO 8125	
PEG X SO 8125	PEG IX SO 8125	ob40	336°07'00"	A SO 8125	0°00'00"	105.87 A	SO 8125	
PEG IX SO 8125	PEG VIII SO 8125	ob39	344°22'00"	A SO 8125	0°00'00"	116.72 A	SO 8125	
PEG VIII SO 8125	PEG VII SO 8125	ob49	354°38'00"	A SO 8125	0°00'00"	114.34 A	SO 8125	
PEG VII SO 8125	PEG VI SO 8125	ob50	3°30'00"	A SO 8125	0°00'00"	142.02 A	SO 8125	
PEG VI SO 8125	PEG 939 DP 572823	ob51	10°14'00"	A SO 8125	0°00'00"	267.33 A	SO 8125	
PEG 939 DP 572823	IT XXII DP 13807	ob52	247°35'30"	A DP 13807	0°00'00"	38.67 A	DP 13807	
4011	IT XXIV DP 13807	ob3	32°53'50"	M		727.83 M		
IT 26 DP 572823	UNMK 1 DP 586220	ob8	86°01'30"	C		337.70 C		
IT 27 DP 572823	UNMK 2 DP 586220	ob13	118°58'00"	C		183.39 C		
UNMK 175 DP 572823	UNMK 1 DP 586220	ob16	54°09'20"	C		148.03 C		
UNMK 1 DP 586220	UNMK 2 DP 586220	ob64	18°19'10"	C		383.06 C		
UNMK 2 DP 586220	UNMK 179 DP 572823	ob65	5°43'29"	C		1,042.77 C		
PEG 939 DP 572823	PEG 938 DP 572823	ob53	327°48'40"	A DP 572823	0°00'00"	86.34 A	DP 572823	Class B
PEG 938 DP 572823	UNMK 170 DP 572823	ob55	198°00'00"	A SO 8125	0°00'00"	43.81 A	DP 572823	Class B
UNMK 170 DP 572823	UNMK 171 DP 572823	ob56	198°00'00"	A SO 8125	0°00'00"	10.71 A	DP 572823	Class B
UNMK 171 DP 572823	PEG SO 8125	ob57	198°00'00"	A SO 8125	0°00'00"	579.52 A	SO 8125	Class B

# Mark and Vector

Survey Number DP 586220

Meridional Circuit Grey 2000

From	To	Code	Bearing	Adpt Surv	Bearing Correction	Distance	Adpt Surv	Class
PEG SO 8125	PEG 156 DP 572823	ob58	201°04'00"	A SO 8125	0°00'00"	103.14 A	DP 572823	Class B
PEG 156 DP 572823	POST 151 DP 572823	ob36	151°18'30"	A DP 572823	0°00'00"	12.98 A	DP 572823	Class B
POST 151 DP 572823	POST 150 DP 572823	ob35	185°33'00"	A DP 572823	0°00'00"	62.90 A	DP 572823	Class B
POST 150 DP 572823	POST 149 DP 572823	ob34	178°24'00"	A DP 572823	0°00'00"	17.73 A	DP 572823	Class B
POST 149 DP 572823	PEG 157 DP 572823	ob33	298°15'10"	A DP 572823	0°00'00"	25.75 A	DP 572823	Class B
PEG 157 DP 572823	UNMK 172 DP 572823	ob37	191°41'00"	A SO 8125	0°00'00"	7.31 A	DP 572823	Class B
UNMK 172 DP 572823	PEG SO 8125	ob38	191°41'00"	A SO 8125	0°00'00"	1,992.07 A	DP 572823	Class B
PEG SO 8125	PEG SO 8125	ob0	217°03'30"	A SO 8125	0°00'00"	195.84 A	SO 8125	Class B
PEG 939 DP 572823	UNMK SO 8125	ob54	147°48'40"	A DP 572823	0°00'00"	6.70 A	SO 8125	Class B
UNMK SO 8125	UNMK 3 DP 586220	ob59	147°48'40"	A SO 8125	0°00'00"	29.00 C		Class BD
IT XXII DP 13807	UNMK 3 DP 586220	ob62	105°45'30"	C		56.92 C		
IT 29 DP 572823	UNMK 180 DP 572823	ob46	56°16'10"	A DP 572823	0°00'00"	253.76 A	DP 572823	
IT XXII DP 13807	UNMK 182 DP 572823	ob63	181°45'30"	A DP 572823	0°00'00"	255.30 A	DP 572823	
UNMK 3 DP 586220	UNMK 180 DP 572823	ob60	178°41'50"	C		694.99 C		

Mark Name	Mark Condition	Description
4011		2 INCH DIAM IRON TUBE, BRANDED '4011', OVER BURIED INVERTED BOTTLE. FIXED ONLY BY HANGING TRAVERSE.
IT 26 DP 572823		0.05d in Paddock
IT 27 DP 572823		0.02d in Paddock (Rock Cairn)
IT 29 DP 572823		0.3d ~0.5m west of road, ~8m south of bend in road
IT 3 DP 572823		0.2d in on north side of track (15m west of track intersection)
IT 4 DP 572823		0.3d in paddock ~52m east of PW Fence (30+)
IT 5 DP 572823		0.2d in on north side of track (15m west of track intersection)
IT 6 DP 572823		0.3d ~0.8m south of fence, ~59m east of fence corner
IT 7 DP 572823		1.1m north of fence (south side of road)
IT XXIII DP 13807		Bent Tube (Base Surveyed)
IT XXIV DP 13807		0.02 deep in paddock
IT PIPE SO 8125	Destroyed	IT fd on Side



# Mark and Vector

Survey Number DP 586220

Meridional Circuit Grey 2000

Mark Name	Mark Condition	Description
PEG SO 8125	Searched For and Not Found	

**\*\*\* End of Report \*\*\***

## LT 586220 Schedule/Memorandum

Land registration district  
Nelson

Territorial authority  
Tasman District

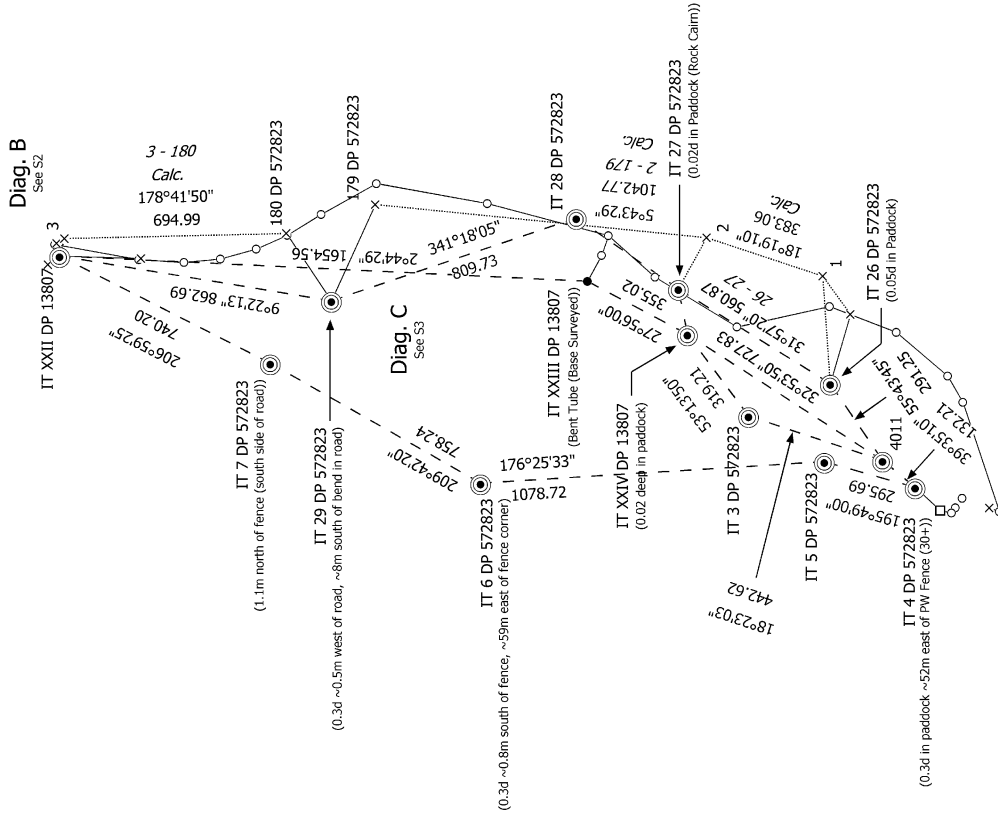
### Schedule of Existing Easements

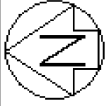
Parcels shown with a prefix of *HL*- include height-limited boundaries

PURPOSE	SHOWN	BURDENED LAND	CREATING DOCUMENT
Right of Way	V	Lot 1	EI 12468287.3

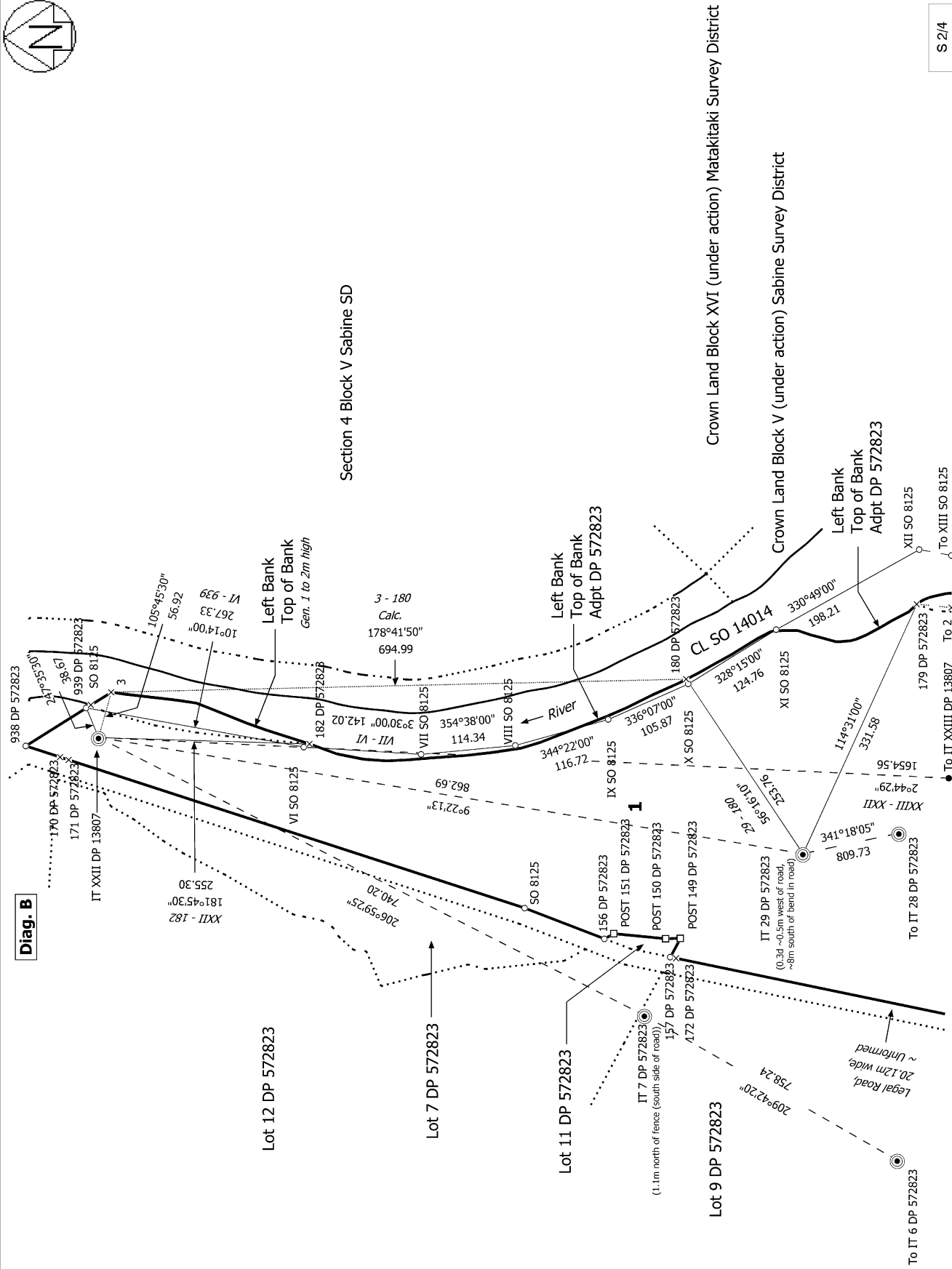


**Diagram of Origin**





Diag. B



Section 4 Block V Sabine SD

Crown Land Block XVI (under action) Matakitaki Survey District

Crown Land Block V (under action) Sabine Survey District

S 2/4

Land District: Nelson

Digitally Generated Plan

Generated on: 28/03/2024 3:11 pm Page 8 of 13

Lot 1 Being Accretion to Lot 10 DP 572823

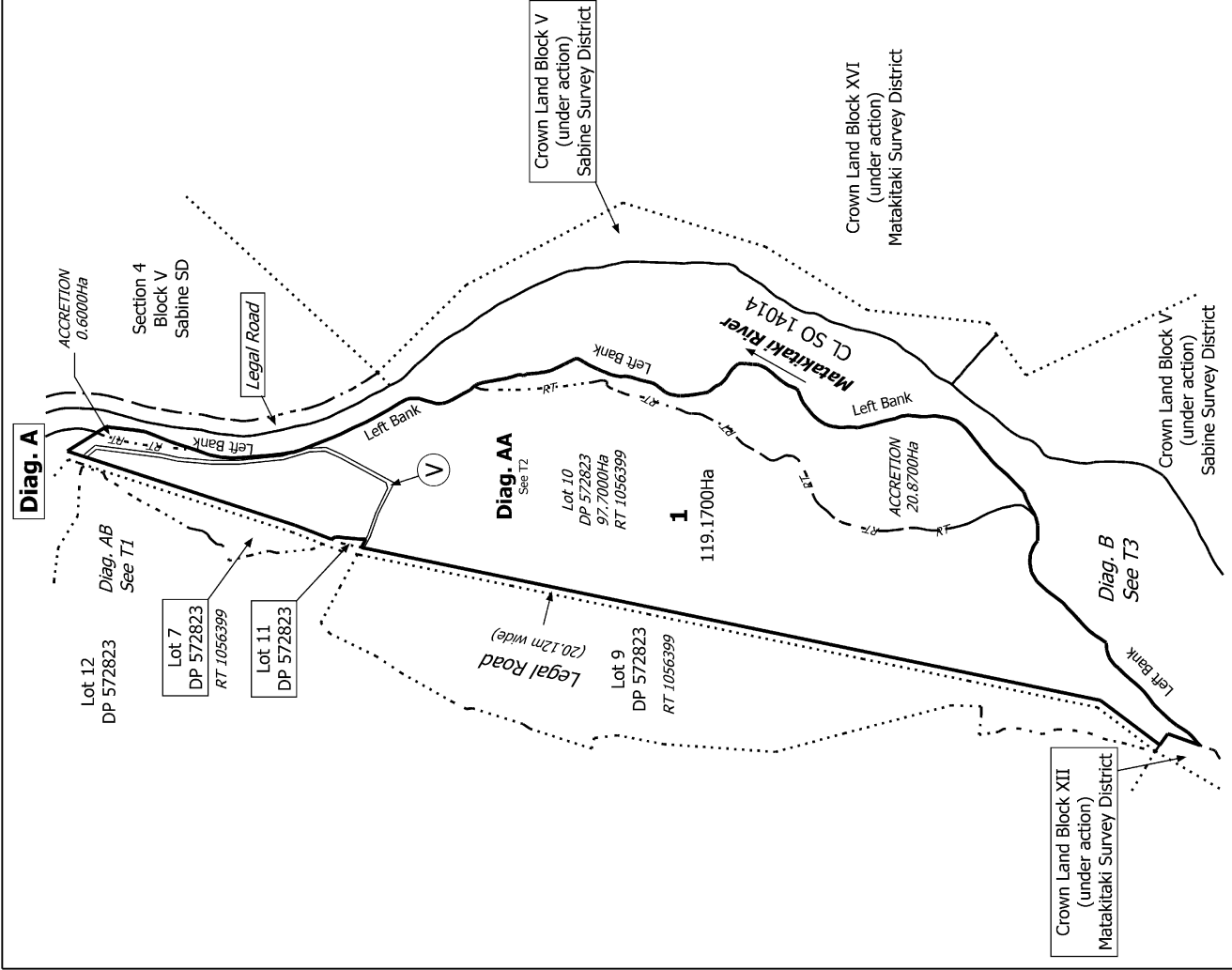
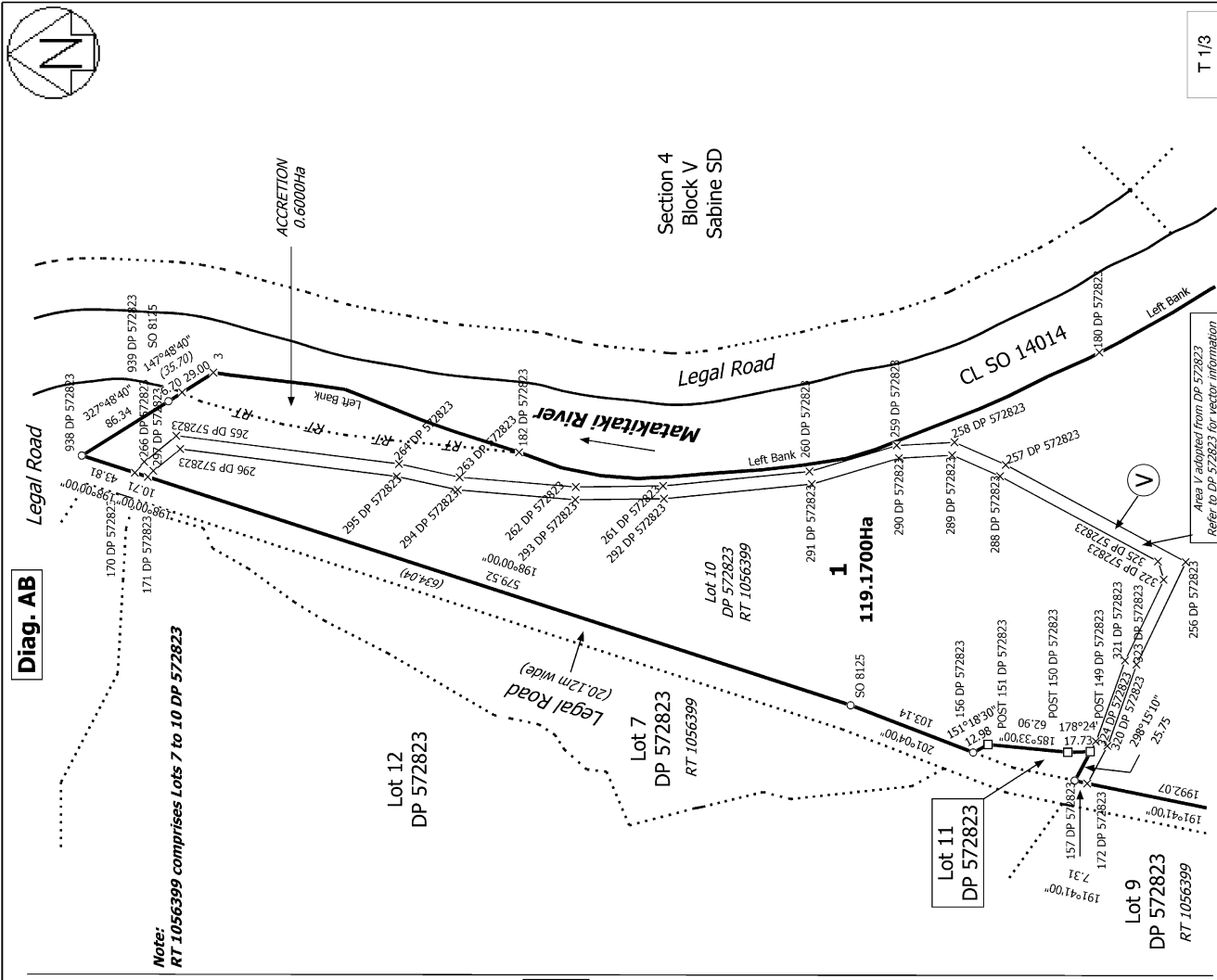
Surveyor: Ben Antonie Smith  
Firm: Newton & Associates Ltd  
Date of Survey: 13/12/2022

Record of Survey  
LT 586220  
Approved on: 28/03/2024









T 1/3

Record of Survey  
LT 586220  
Approved on: 28/03/2024

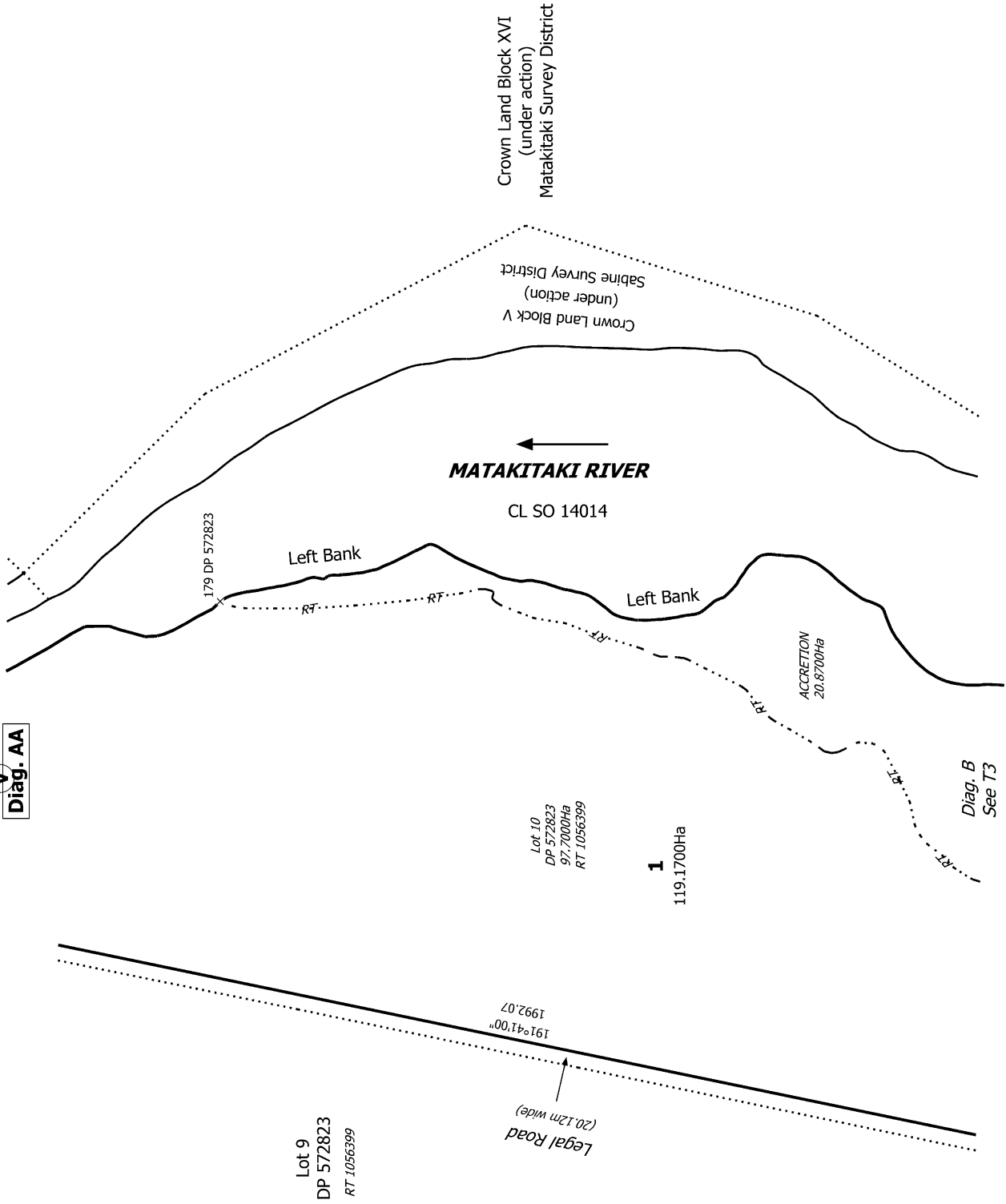
Surveyor: Ben Antonio Smith  
Firm: Newton & Associates Ltd  
Date of Survey: 13/12/2022

Land District: Nelson  
Digitally Generated Plan  
Generated on: 28/03/2024 3:11pm Page 11 of 13

Lot 1 Being Accretion to Lot 10 DP 572823



V  
Diag. AA



T 2/3

Land District: Nelson

**Digitally Generated Plan**

Generated on: 28/03/2024 3:11pm Page 12 of 13

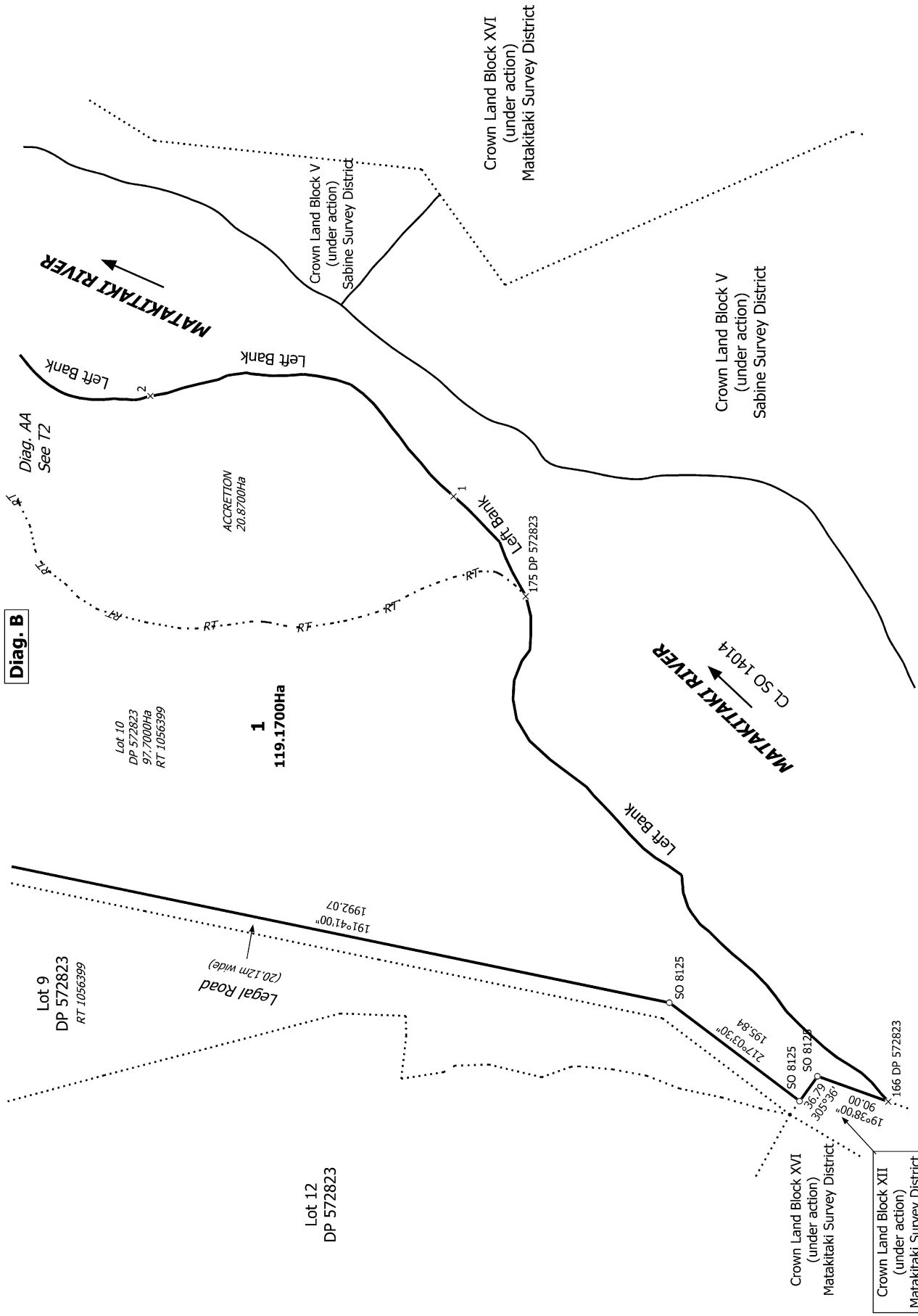
Lot 1 Being Accretion to Lot 10 DP 572823

Surveyor: Ben Antonie Smith  
Firm: Newton & Associates Ltd  
Date of Survey: 13/12/2022

Record of Survey  
LT 586220  
Approved on: 28/03/2024



Diag. B



T 3/3

Land District: Nelson

Lot 1 Being Accretion to Lot 10 DP 572823

Record of Survey  
LT 586220  
Approved on: 28/03/2024

Surveyor: Ben Antonie Smith  
Firm: Newton & Associates Ltd  
Date of Survey: 13/12/2022

Digitally Generated Plan  
Generated on: 28/03/2024 3:11 pm Page 13 of 13