

# Record of Survey - LT 585317

**Survey Number** LT 585317  
**Surveyor Reference** 5647 Davidson  
**Surveyor** Guy Derek Panckhurst  
**Survey Firm** Surveying The Bay Ltd (Hastings)  
**Surveyor Declaration** I Guy Derek Panckhurst, being a licensed cadastral surveyor, certify that--  
 (a) this dataset provided by me and its related survey are accurate, correct and in accordance with the Cadastral Survey Act 2002 and Cadastral Survey Rules 2021; and  
 (b) the survey was undertaken by me or under my personal direction.  
 Declared on 08 Sep 2023 08:42 AM

## Survey Details

**Dataset Description** LOTS 1 & 2 BEING A SUBDIVISION OF LOT 1 DEEDS PLAN 735  
**Purpose** LT Subdivision  
**Status** Approved as to Survey **Type** Survey  
**Land District** Hawkes Bay **Survey Class** Class A  
**Meridional Circuit** Hawkes Bay 2000 **Vertical Datum** None

## Survey Dates

**Surveyed Date** 20/11/2022 **Certified Date** 08/09/2023  
**Submitted Date** 08/09/2023 08:42:14 **Survey Approval Date** 27/09/2023  
**Deposit Date**

## Referenced Surveys

Survey Number	Land District	Bearing Correction
DP 1042	Hawkes Bay	0°01'30"
DP 19663	Hawkes Bay	0°00'00"
DP 316	Hawkes Bay	0°01'00"
DP 27284	Hawkes Bay	0°00'00"
SO 4880	Hawkes Bay	0°00'00"
DP 6677	Hawkes Bay	0°00'00"
SO 10913	Hawkes Bay	0°00'00"
DP 359101	Hawkes Bay	0°00'00"
LT 494973	Hawkes Bay	0°00'00"
DP 529257	Hawkes Bay	0°00'00"
SO 532850	Hawkes Bay	0°00'00"
DP 533487	Hawkes Bay	0°00'00"
DP 590566	Hawkes Bay	0°00'00"

## Territorial Authorities

Napier City

## Comprised In

RT HBC2/1313



# Record of Survey - LT 585317

---

## Created Parcels

Parcels	Parcel Intent	Area	RT Reference
Lot 1 Deposited Plan 585317	Fee Simple Title	0.0237 Ha	1103388
Lot 2 Deposited Plan 585317	Fee Simple Title	0.1022 Ha	1103389
<b>Total Area</b>		<u>0.1259 Ha</u>	

# Mark and Vector

Survey Number DP 585317

Meridional Circuit Hawkes Bay 2000

From	To	Code	Bearing	Adpt Surv	Bearing Correction	Distance	Adpt Surv	Class
SS 579 SO 4880	IB 1 DP 529257	ob0	52°00'20"	M		98.20 M		
IB 1 DP 529257	NAIL 2 DP 529257	ob6	232°02'30"	A DP 529257	0°00'00"	1.39 A	DP 529257	
NAIL 2 DP 529257	SS 579 SO 4880	ob11	232°00'00"	M		96.81 M		
SS 579 SO 4880	SS 144 SO 4880	ob1	232°06'30"	M		53.92 M		
SS 579 SO 4880	IT 3 DP 585317	ob2	54°52'00"	M		14.50 M		
IT 3 DP 585317	IB 1 DP 529257	ob12	51°30'50"	M		83.72 M		
IB 1 DP 529257	IT III DP 19663	ob7	67°01'00"	M		23.23 M		
IB 1 DP 529257	NAIL 3 DP 529257	ob8	212°37'10"	M		55.92 M		
NAIL 3 DP 529257	IT VI DP 19663	ob16	119°21'00"	M		42.34 M		
IT VI DP 19663	NAIL 2 LT 590566	ob17	72°09'30"	M		39.02 M		
NAIL 2 LT 590566	IS I SO 10913	ob23	44°38'40"	M		52.91 M		
IS I SO 10913	IT III DP 19663	ob24	294°35'20"	M		65.67 M		
IT III DP 19663	BS 2 DP 19663	ob15	234°51'50"	A DP 19663	0°00'00"	26.60 A	DP 19663	
BS 2 DP 19663	BS 1 DP 19663	ob26	234°51'50"	A DP 19663	0°00'00"	39.03 A	DP 19663	
BS 1 DP 19663	BS 1a DP 19663	ob28	234°51'50"	A DP 19663	0°00'00"	15.25 A	DP 19663	
BS 1a DP 19663	SS 579 SO 4880	ob30	234°51'50"	A DP 19663	0°00'00"	39.90 A	DP 19663	
BS 1 DP 19663	IT IV DP 19663	ob29	189°26'00"	A DP 19663	0°00'00"	15.24 A	DP 19663	
IT IV DP 19663	IT VI DP 19663	ob32	120°07'40"	A DP 19663	0°00'00"	48.06 A	DP 19663	
IS I SO 10913	MA 5778 SO 10913	ob25	157°05'00"	A SO 10913	0°00'00"	9.86 A	SO 10913	
MA 5778 SO 10913	SS 577 SO 4880	ob36	318°12'00"	A SO 10913	0°00'00"	8.31 A	SO 10913	
SS 577 SO 4880	IT III DP 19663	ob37	297°30'50"	A SO 10913	0°00'00"	65.41 A	SO 10913	
IT VI DP 19663	BS 5 DP 19663	ob18	71°26'20"	A DP 19663	0°00'00"	47.56 A	DP 19663	
BS 5 DP 19663	SS 577 SO 4880	ob38	41°05'33"	A DP 19663	0°00'00"	41.87 A	DP 19663	
IT VI DP 19663	IS 1 DP 585317	ob19	266°43'40"	M		37.55 M		
IS 1 DP 585317	MA 5 DP 533487	ob39	226°12'00"	M		22.19 M		
MA 5 DP 533487	IS 1 DP 533487	ob41	140°07'00"	M		46.63 M		
IS 1 DP 533487	IT IV DP 21525	ob43	137°40'00"	A DP 533487	0°00'00"	16.90 A	DP 533487	
IT IV DP 21525	IT I DP 494973	ob45	119°55'30"	A LT 494973	0°00'00"	54.24 A	LT 494973	
IT I DP 494973	IT V DP 494973	ob47	110°12'30"	A LT 494973	0°00'00"	11.48 A	LT 494973	
IT V DP 494973	IS IV DP 494973	ob48	159°51'30"	A LT 494973	0°00'00"	45.91 A	LT 494973	
IS IV DP 494973	SS 570 SO 4880	ob49	55°44'10"	A LT 494973	0°00'00"	66.66 A	LT 494973	
SS 570 SO 4880	IT I DP 27284	ob50	46°55'00"	A DP 27284	0°00'00"	60.66 A	DP 27284	
IT I DP 27284	IS V DP 359101	ob52	58°56'20"	A DP 359101	0°00'00"	4.43 A	DP 359101	
IS V DP 359101	CU PLUG IV DP 359101	ob53	339°13'30"	A DP 359101	0°00'00"	20.81 A	DP 359101	

# Mark and Vector

Survey Number DP 585317

Meridional Circuit Hawkes Bay 2000

From	To	Code	Bearing	Adpt Surv	Bearing Correction	Distance	Adpt Surv	Class
CU PLUG IV DP 359101	IS III DP 359101	ob54	357°05'00"	A DP 359101	0°00'00"	27.43 A	DP 359101	
IS III DP 359101	IS I DP 359101	ob55	340°23'00"	A DP 359101	0°00'00"	31.38 A	DP 359101	
IS I DP 359101	SS 574 SO 4880	ob56	218°10'57"	A DP 359101	0°00'00"	24.30 A	DP 359101	
SS 574 SO 4880	SS 575 SO 4880	ob57	283°46'31"	A DP 359101	0°00'00"	36.91 A	DP 359101	
SS 575 SO 4880	SS 576 SO 4880	ob58	269°20'49"	A SO 4880	0°00'00"	56.57 A	SO 4880	
SS 576 SO 4880	BS 5 DP 19663	ob59	41°05'33"	A DP 19663	0°00'00"	11.12 A	DP 19663	
SS 570 SO 4880	SS 571 SO 4880	ob51	51°12'08"	A SO 4880	0°00'00"	93.77 A	SO 4880	
SS 571 SO 4880	SS 632 SO 4880	ob60	303°13'10"	A SO 4880	0°00'00"	4.29 A	SO 4880	
SS 632 SO 4880	SS 572 SO 4880	ob61	51°02'56"	A SO 4880	0°00'00"	44.15 A	SO 4880	
SS 572 SO 4880	SS 573 SO 4880	ob62	326°54'48"	A SO 532850	0°00'00"	82.70 A	SO 532850	
SS 573 SO 4880	IS I DP 359101	ob63	218°10'57"	A DP 359101	0°00'00"	48.37 A	DP 359101	
MA 5 DP 533487	IT IV DP 21525	ob42	139°28'00"	A DP 533487	0°00'00"	63.51 A	DP 533487	
IS 1 DP 533487	IS II DP 6677	ob44	317°40'00"	A DP 533487	0°00'00"	29.97 A	DP 533487	
IS II DP 6677	MA 5 DP 533487	ob64	324°28'00"	A DP 533487	0°00'00"	16.73 A	DP 533487	
IS II DP 6677	IP III DP 6677	ob65	320°24'30"	A DP 19663	0°00'00"	13.23 A	DP 19663	
IP III DP 6677	IT VII DP 19663	ob66	24°56'30"	A DP 19663	0°00'00"	22.03 A	DP 19663	
IT VII DP 19663	IT VI DP 19663	ob67	88°44'50"	A DP 19663	0°00'00"	42.94 A	DP 19663	
IT IV DP 21525	IT 6 DP 533487	ob46	68°25'10"	A DP 533487	0°00'00"	43.71 A	DP 533487	
IT 6 DP 533487	IT 3 DP 533487	ob69	331°16'40"	A DP 533487	0°00'00"	31.97 A	DP 533487	
IT 3 DP 533487	MA 4 DP 533487	ob70	213°11'00"	A DP 533487	0°00'00"	20.49 A	DP 533487	
MA 4 DP 533487	IS 1 DP 533487	ob74	240°21'30"	A DP 533487	0°00'00"	29.27 A	DP 533487	
IT 3 DP 533487	PEG 47 DP 533487	ob71	57°06'00"	A DP 533487	0°00'00"	5.33 A	DP 533487	
IT 3 DP 533487	DISK 72 DP 533487	ob72	336°07'00"	A DP 533487	0°00'00"	5.34 A	DP 533487	
IT 3 DP 533487	UNMK 46 DP 533487	ob73	335°04'00"	A DP 533487	0°00'00"	5.42 A	DP 533487	
SS 579 SO 4880	PEG 202 DP 585317	ob3	69°40'00"	M		7.34 M		
BS 1a DP 19663	PEG (4) DP 19663	ob31	217°35'00"	A DP 19663	0°00'00"	6.54 A	DP 19663	
IT IV DP 19663	PEG (5) DP 19663	ob33	225°53'00"	A DP 19663	0°00'00"	11.34 A	DP 19663	
IT IV DP 19663	PEG (6) DP 19663	ob34	223°21'00"	A DP 19663	0°00'00"	14.37 A	DP 19663	
IT IV DP 19663	PEG (10) DP 19663	ob35	78°05'00"	A DP 19663	0°00'00"	38.81 A	DP 19663	
IT VII DP 19663	PEG (7) DP 19663	ob68	29°24'00"	A DP 19663	0°00'00"	4.98 A	DP 19663	
IT VI DP 19663	PEG (8) DP 19663	ob20	265°27'00"	A DP 19663	0°00'00"	18.33 A	DP 19663	
IT VI DP 19663	PEG (9) DP 19663	ob21	308°10'00"	A DP 19663	0°00'00"	4.04 A	DP 19663	
BS 2 DP 19663	BS (1) DP 19663	ob27	225°22'00"	A DP 19663	0°00'00"	7.62 A	DP 19663	

# Mark and Vector

Survey Number DP 585317

Meridional Circuit Hawkes Bay 2000

From	To	Code	Bearing	Adpt Surv	Bearing Correction	Distance	Adpt Surv	Class
PEG 202 DP 585317	UNMK 63 DP 585317	ob78	55°00'00"	C		18.80 C		Class A
UNMK 63 DP 585317	PEG (4) DP 19663	ob93	55°00'00"	C		7.76 C		Class A
PEG (4) DP 19663	PEG (5) DP 19663	ob80	147°00'00"	A DP 19663	0°00'00"	10.69 A DP 19663		Class A
PEG (6) DP 19663	PEG (5) DP 19663	ob82	33°57'00"	A DP 19663	0°00'00"	3.08 A DP 19663		Class A
PEG (6) DP 19663	PEG (7) DP 19663	ob83	133°10'00"	A DP 19663	0°00'00"	15.01 A DP 19663		Class A
PEG (7) DP 19663	PEG (8) DP 19663	ob84	102°20'00"	A DP 19663	0°00'00"	22.73 A DP 19663		Class A
PEG (8) DP 19663	PEG (9) DP 19663	ob85	75°20'00"	A DP 19663	0°00'00"	15.61 A DP 19663		Class A
PEG (9) DP 19663	PEG (10) DP 19663	ob86	359°10'00"	A DP 19663	0°00'00"	29.65 A DP 19663		Class A
PEG (10) DP 19663	BS (1) DP 19663	ob87	339°34'30"	A DP 19663	0°00'00"	25.74 A DP 19663		Class A
PEG 202 DP 585317	PEG (57) DP 1042	ob79	107°20'40"	A DP 19663	0°00'00"	31.89 A DP 19663		Class A
PEG (57) DP 1042	PEG (58) DP 1042	ob88	210°54'30"	A DP 1042	0°01'30"	23.15 A DP 1042		
PEG (58) DP 1042	IP III DP 6677	ob90	102°55'30"	A DP 6677	0°00'00"	6.69 A DP 6677		
PEG (57) DP 1042	UNMK 46 DP 533487	ob89	106°37'00"	C		60.11 C		Class A
UNMK 46 DP 533487	DISK 72 DP 533487	ob77	106°39'30"	A DP 533487	0°00'00"	0.13 A DP 533487		Class A
DISK 72 DP 533487	PEG 47 DP 533487	ob76	106°39'30"	A DP 533487	0°00'00"	6.93 A DP 533487		Class A
PEG 47 DP 533487	IS 204 DP 585317	ob75	339°03'00"	A DP 19663	0°00'00"	20.44 A DP 19663		Class A
IS 204 DP 585317	IS 203 DP 585317	ob91	339°35'30"	A DP 316	0°01'00"	60.87 A DP 316		Class A
IS 203 DP 585317	BS (1) DP 19663	ob92	235°00'00"	A DP 19663	0°00'00"	1.89 A DP 19663		Class A
IT VI DP 19663	IS 204 DP 585317	ob22	88°15'00"	M		10.22 M		
IB 1 DP 529257	BS (1) DP 19663	ob9	206°32'00"	M		12.96 M		
IB 1 DP 529257	IS 203 DP 585317	ob10	201°59'00"	M		11.33 M		
IS 1 DP 585317	PEG (57) DP 1042	ob40	285°27'00"	C		9.70 C		
UNMK 63 DP 585317	MA 200 DP 585317	ob94	323°29'00"	C		0.80 C		
PEG (4) DP 19663	MA 201 DP 585317	ob81	327°00'00"	C		1.50 C		

# Mark and Vector

Survey Number DP 585317

Meridional Circuit Hawkes Bay 2000

From	To	Code	Bearing	Adpt Surv	Bearing Correction	Distance	Adpt Surv	Class
SS 579 SO 4880	MA 200 DP 585317	ob4	57°21'00" M			25.90 M		
SS 579 SO 4880	MA 201 DP 585317	ob5	55°37'00" M			33.72 M		
IT 3 DP 585317	MA 200 DP 585317	ob13	60°30'00" M			11.43 M		
IT 3 DP 585317	MA 201 DP 585317	ob14	56°11'00" M			19.22 M		
UNMK 63 DP 585317	PEG (57) DP 1042	ob95	143°29'00" C			25.26 C		Class A

Mark Name	Mark Condition	Description
BS (1) DP 19663		Flush in old seal
IB 1 DP 529257		Flush in seal near channel
IS 1 DP 533487		Flush in seal
IS 1 DP 585317		-0.3 in garden
IS 203 DP 585317		0.2 from edge of seal
IS 204 DP 585317		In raised garden bed
IS I SO 10913		Flush in seal
IT 3 DP 585317		Old tube no record; flush in seal
IT III DP 19663		-0.1 at edge of seal
IT VI DP 19663		Flush in seal near end of retained area
MA 200 DP 585317		Flush in seal
MA 201 DP 585317		Flush in seal
MA 5 DP 533487		Flush in concrete drive
NAIL 2 DP 529257		Flush in seal
NAIL 2 LT 590566		Flush in seal
NAIL 3 DP 529257		Flush in sealed drive
PEG (10) DP 19663		Unable to be pegged; on steep slope with dense vegetation
PEG (4) DP 19663		Unable to be pegged; on bank with dense vegetation
PEG (5) DP 19663		Unable to be pegged; on unstable ground
PEG (57) DP 1042		Unable to be pegged; on unstable bank
PEG (6) DP 19663		Unable to be pegged; on slope with dense vegetation
PEG (7) DP 19663		Unable to be pegged; on steep slope with dense vegetation
PEG (8) DP 19663		Unable to be pegged; on steep slope with dense vegetation
PEG (9) DP 19663		Unable to be pegged; on steep slope with dense vegetation
SS 144 SO 4880		IT under cast iron cover in seal; -0.35
SS 579 SO 4880		IT under cast iron cover in seal



# Mark and Vector

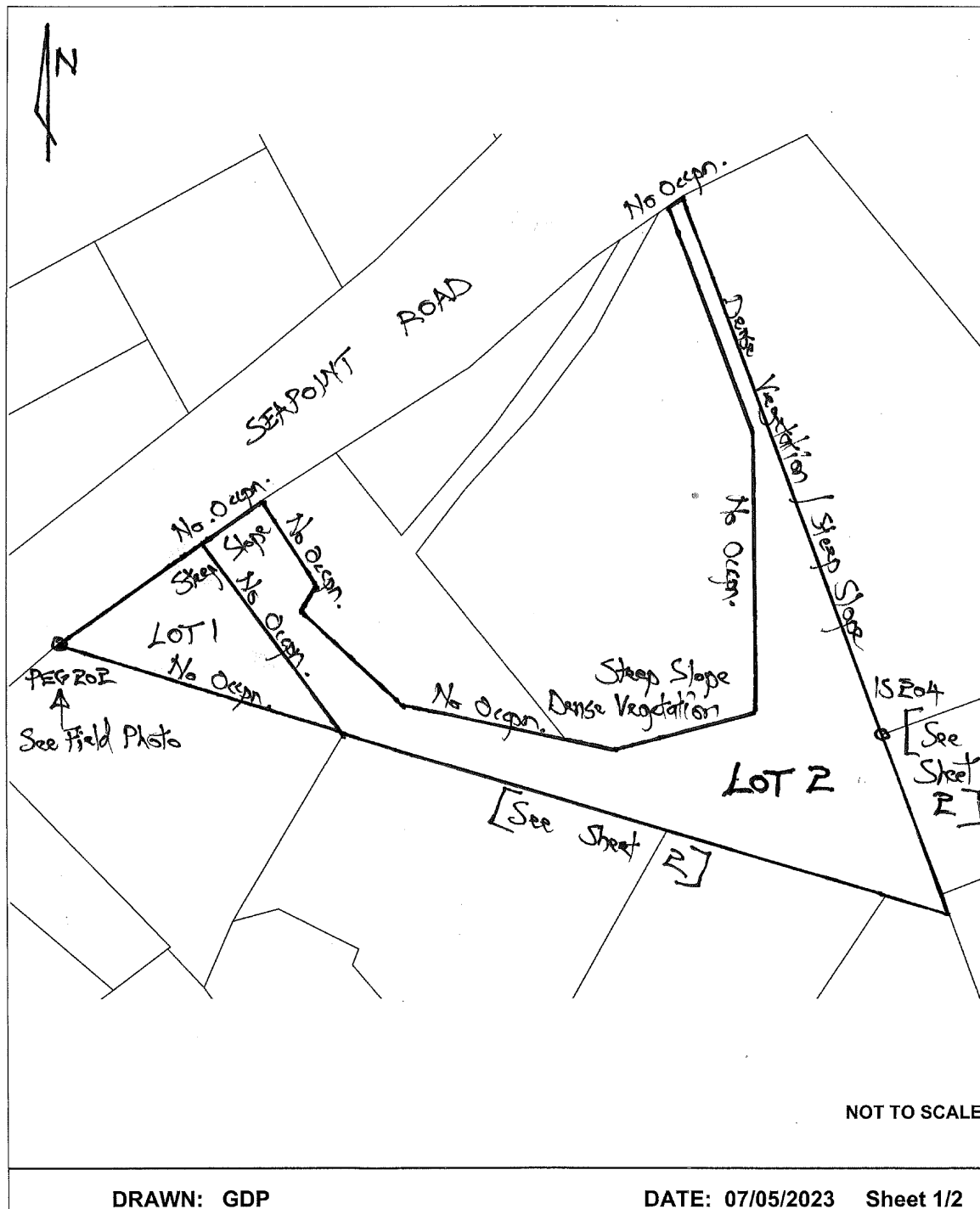
**Survey Number** DP 585317  
**Meridional Circuit** Hawkes Bay 2000

Mark Name	Mark Condition	Description
BS 1 DP 19663	Searched For and Not Found	
BS 1a DP 19663	Searched For and Not Found	
BS 2 DP 19663	Searched For and Not Found	

**\*\*\* End of Report \*\*\***

**SURVEYING THE BAY**  
HAWKE'S BAY | NEW ZEALAND

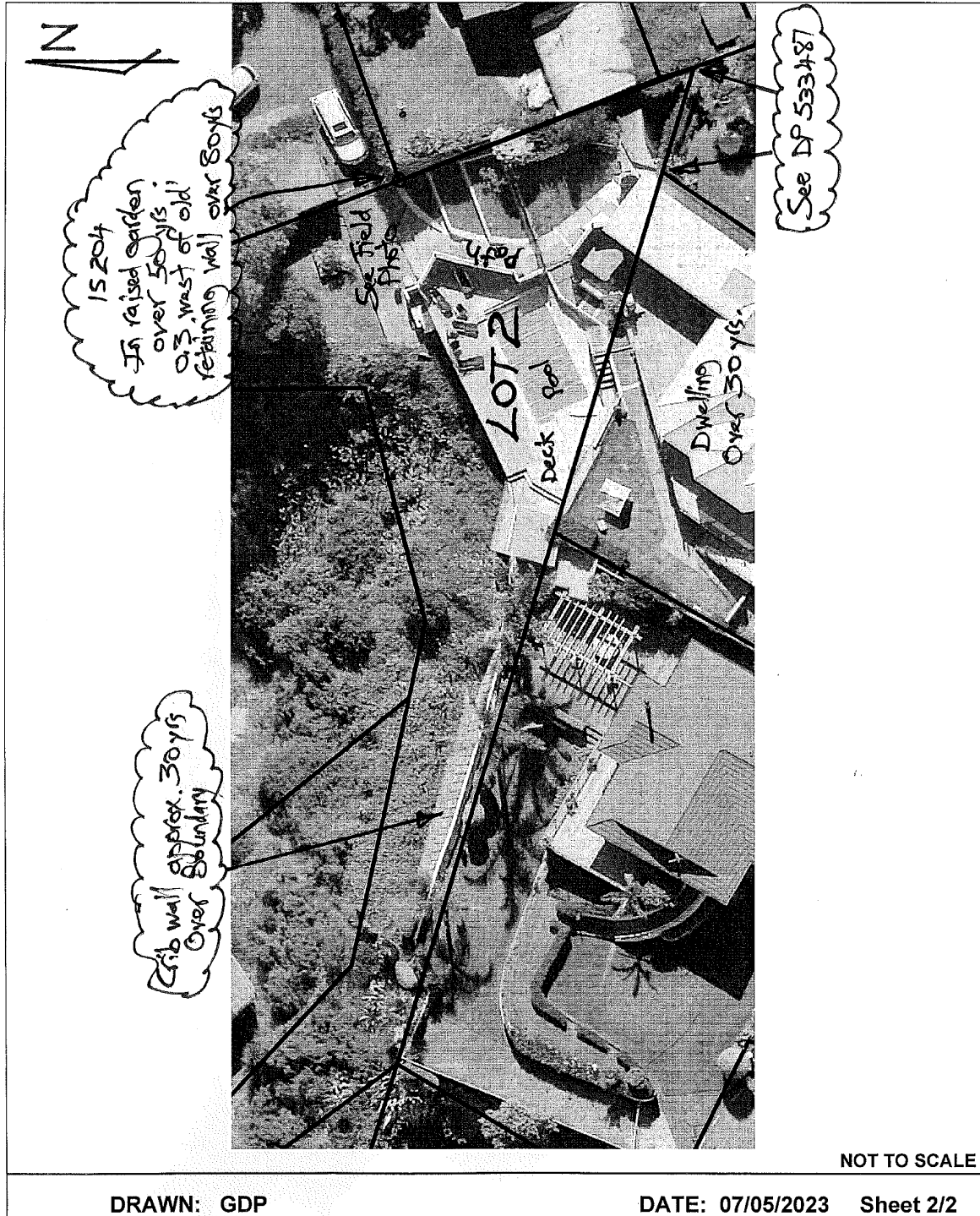
OCCUPATION DIAGRAM Plan No. DP 585317

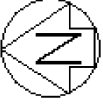




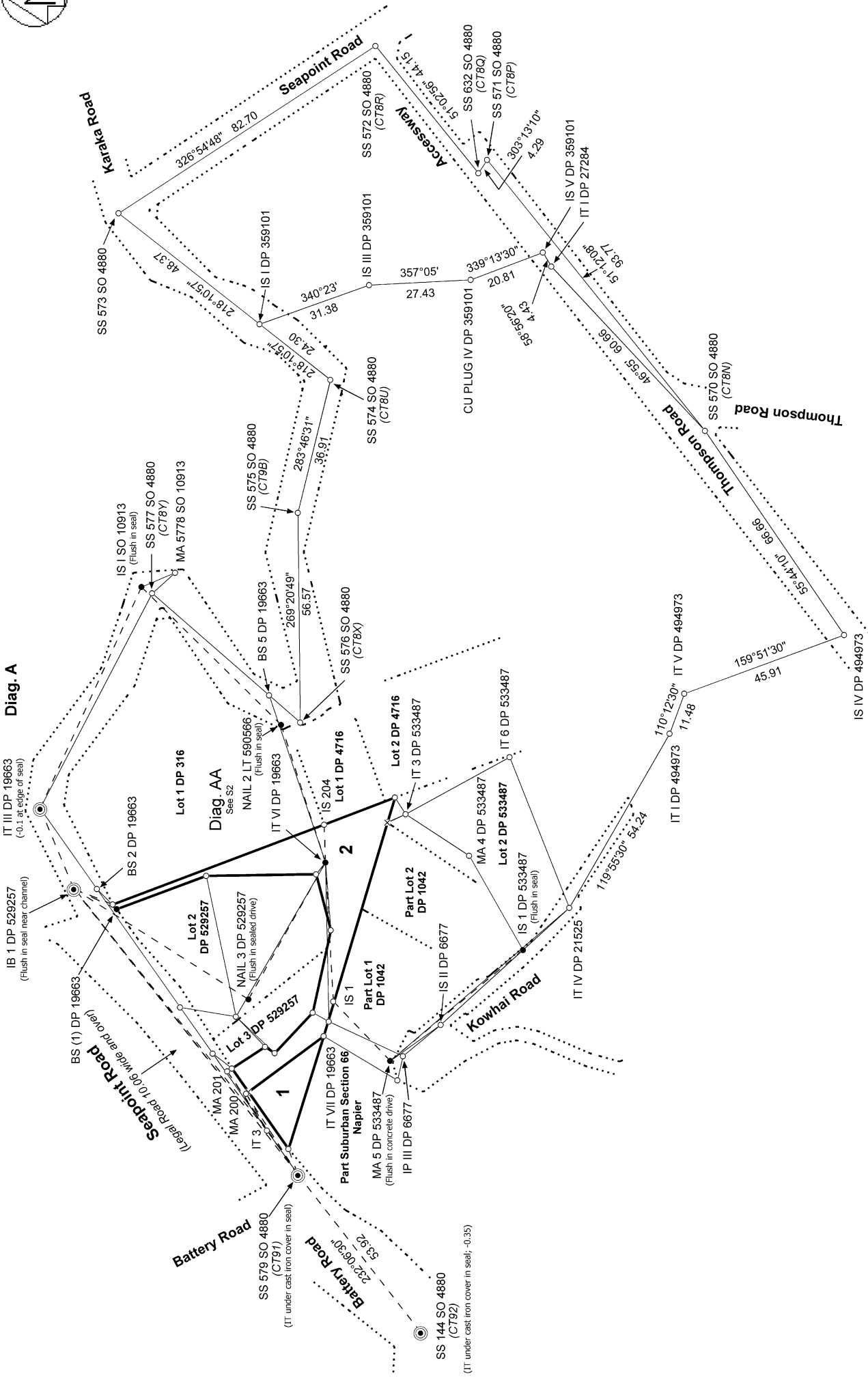
**SURVEYING THE BAY**  
HAWKE'S BAY | NEW ZEALAND

OCCUPATION DIAGRAM Plan No. DP 585317





Diag. A



5647 Davidson

Record of Survey  
 LT 585317  
 Approved on: 27/09/2023

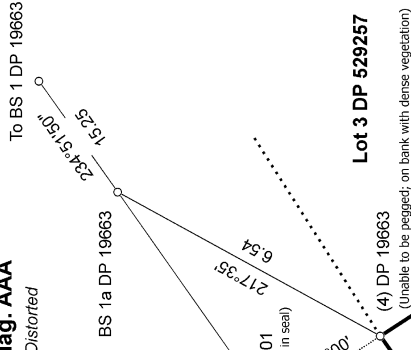
Surveyor: Guy Derek Panckhurst  
 Firm: Surveying The Bay Ltd (Hastings)  
 Date of Survey: 20/11/2022

LOTS 1 & 2 BEING A SUBDIVISION OF LOT 1 DEEDS PLAN 735

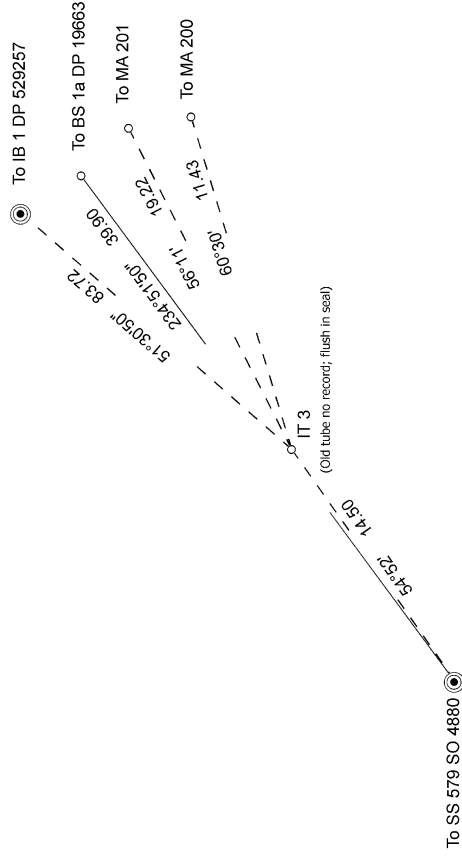




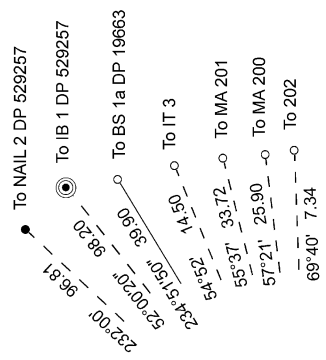
**Diag. AAA**  
*Distorted*



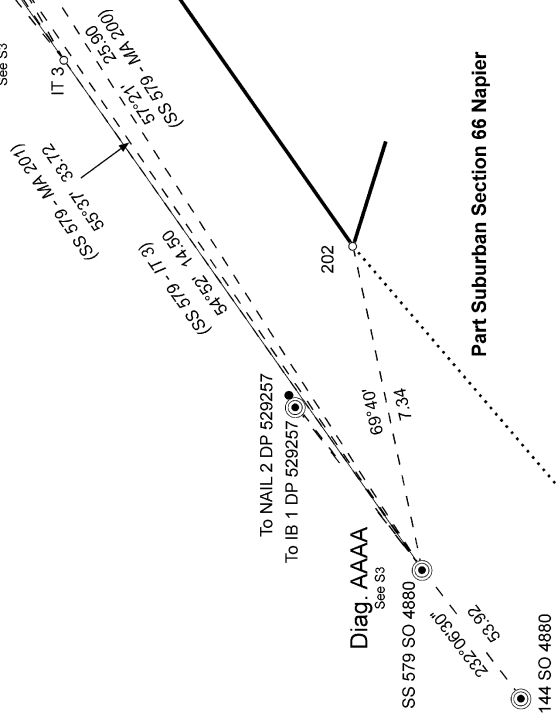
**Diag. AAAB**  
*Distorted*



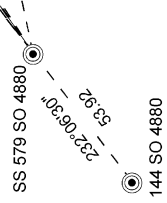
**Diag. AAAAA**  
*Distorted*



**Diag. AAAB**  
*See S 63*



**Diag. AAAAA**  
*See S 63*



**Sepoirt Road**

**2**

**1**

**LOTS 1 & 2 BEING A SUBDIVISION OF LOT 1 DEEDS PLAN 735**

Record of Survey  
LT 585317  
Approved on: 27/09/2023

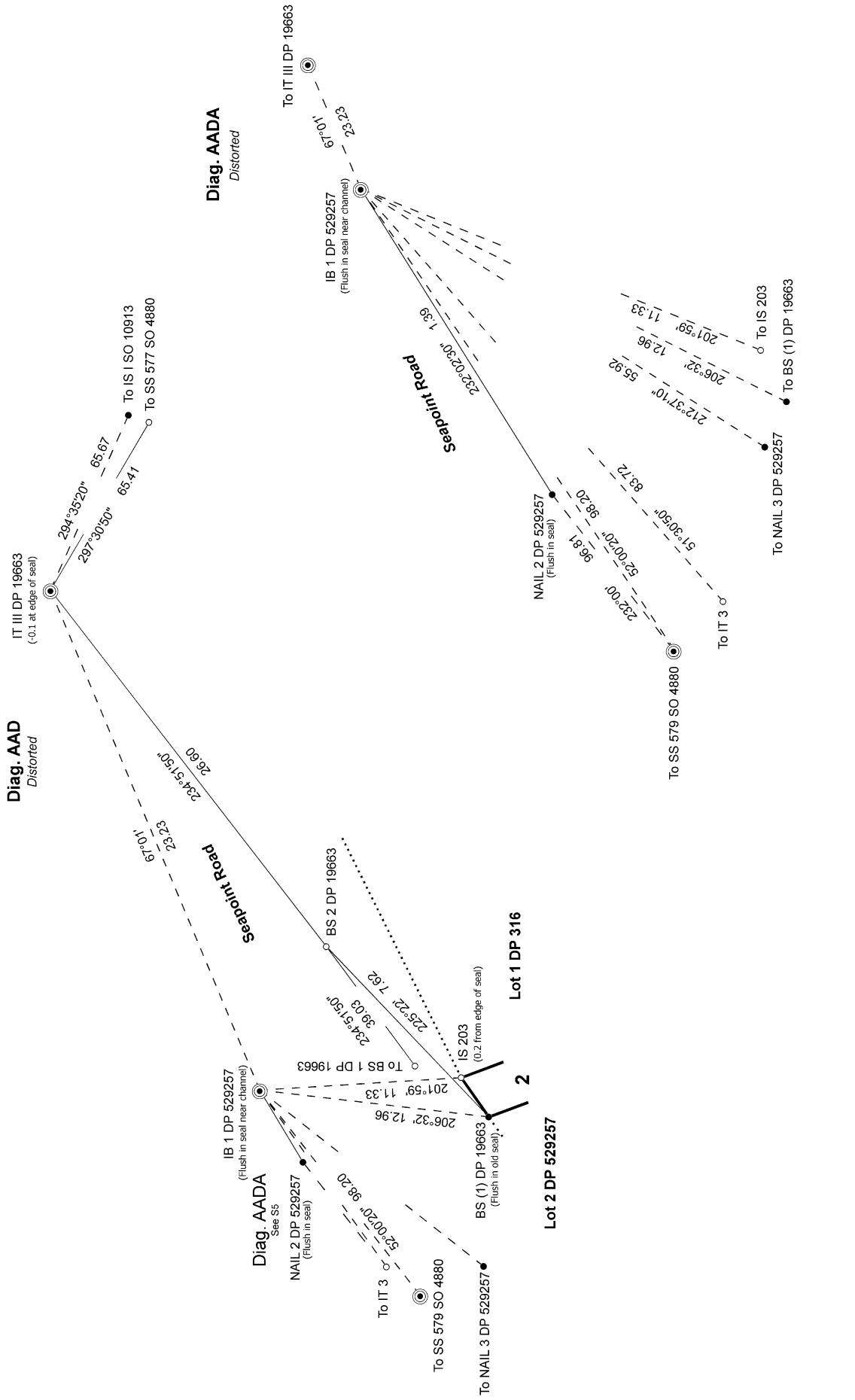
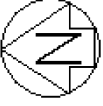
Surveyor: Guy Derek Panckhurst  
Firm: Surveying The Bay Ltd (Hastings)  
Date of Survey: 20/11/2022

Land District: Hawkes Bay

**Digitally Generated Plan**

5647 Davidson





5647 Davidson

S 5/6

Land District: Hawkes Bay

Digitally Generated Plan

Generated on: 27/09/2023 12:37:00 Page 14 of 16

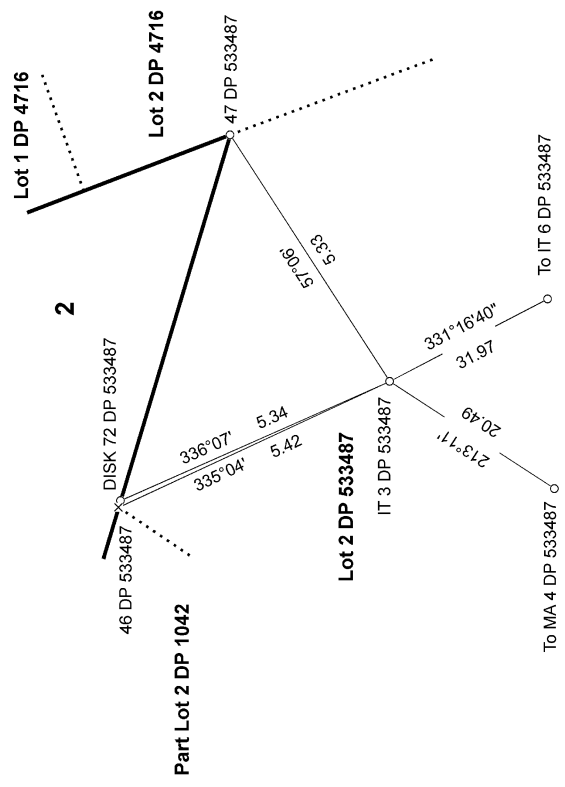
LOTS 1 & 2 BEING A SUBDIVISION OF LOT 1 DEEDS PLAN 735

Surveyor: Guy Derek Panckhurst  
Firm: Surveying The Bay Ltd (Hastings)  
Date of Survey: 20/11/2022

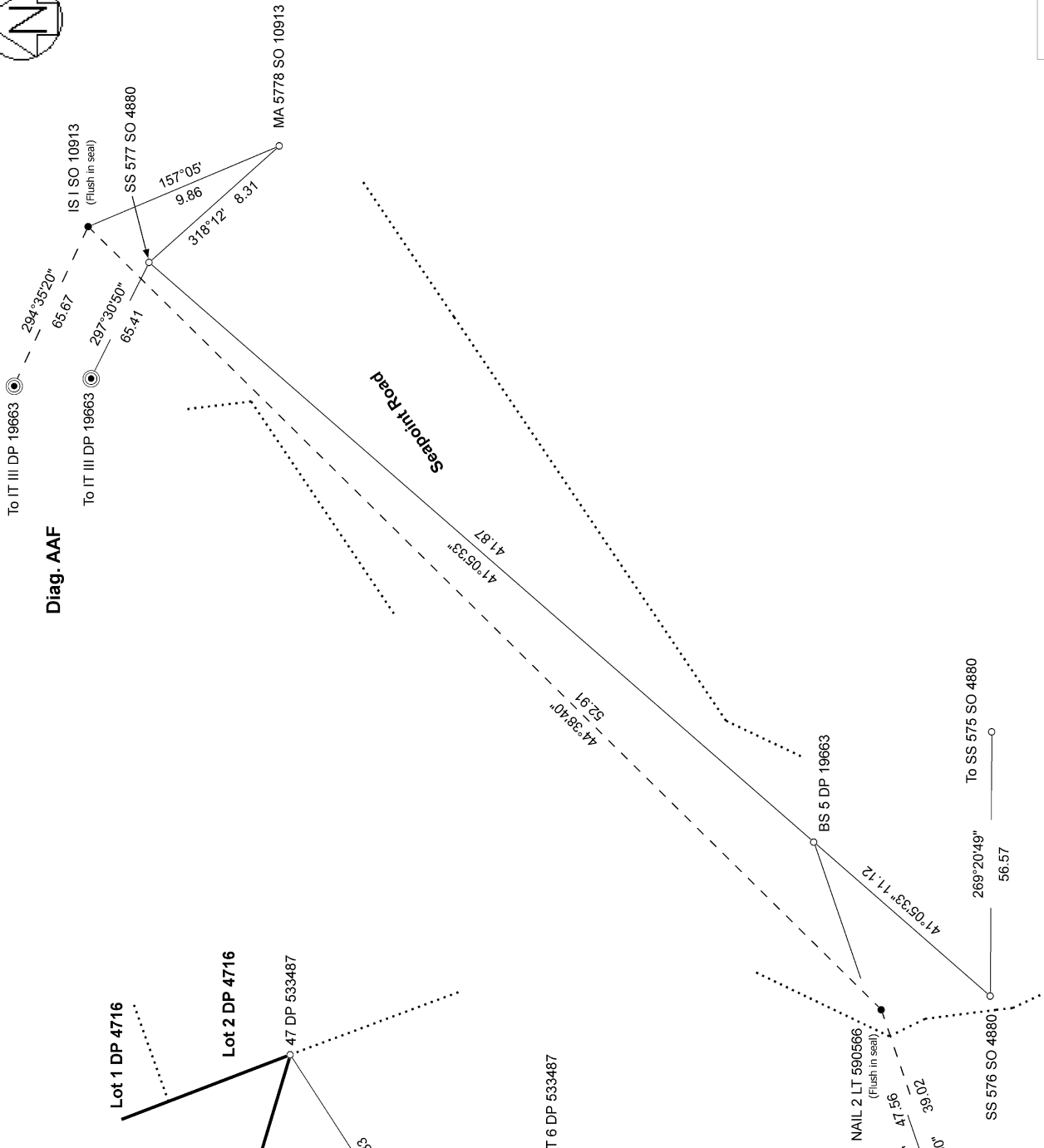
Record of Survey  
LT 585317  
Approved on: 27/09/2023



Diag. AAE



Diag. AAF



5647 Davidson

Land District: Hawkes Bay

Digitally Generated Plan

Generated on: 27/09/2023 12:37:01 Page 15 of 16

LOTS 1 & 2 BEING A SUBDIVISION OF LOT 1 DEEDS PLAN 735

Surveyor: Guy Derek Panckhurst  
Firm: Surveying The Bay Ltd (Hastings)  
Date of Survey: 20/11/2022

Record of Survey  
LT 585317  
Approved on: 27/09/2023

