



Record of Survey - LT 583994

Survey Number LT 583994
Surveyor Reference 221261 - 27 - 29 ROSE ROAD
Surveyor Barry Michael Rogers
Survey Firm Kiwi Vision Consultants Limited
Surveyor Declaration I Barry Michael Rogers, being a licensed cadastral surveyor, certify that--
(a) this dataset provided by me and its related survey are accurate, correct and in accordance with the Cadastral Survey Act 2002 and Cadastral Survey Rules 2021; and
(b) the survey was undertaken by me or under my personal direction.
Declared on 28 Sep 2023 02:02 PM

Survey Details

Dataset Description LOTS 1 - 2 BEING A SUBDIVISION OF PART LOT 18 SECTION 68 DP 242
Purpose LT Subdivision
Status Approved as to Survey
Land District North Auckland
Meridional Circuit Mount Eden 2000

Type	Survey
Survey Class	Class A
Vertical Datum	None

Survey Dates

Surveyed Date	20/12/2022	Certified Date	28/09/2023
Submitted Date	28/09/2023 14:02:57	Survey Approval Date	02/10/2023
Deposit Date			

Referenced Surveys

Survey Number	Land District	Bearing Correction
SO 479150	North Auckland	0°00'00"
DP 242	North Auckland	0°00'00"
SO 48355	North Auckland	0°00'00"
LT 355924	North Auckland	0°00'00"
DP 539253	North Auckland	0°00'00"

Territorial Authorities

Auckland Council

Comprised In

RT NA323/86
RT NA322/34

Created Parcels

Parcels	Parcel Intent	Area	RT Reference
Lot 1 Deposited Plan 583994	Fee Simple Title	0.0279 Ha	1097079
Lot 2 Deposited Plan 583994	Fee Simple Title	0.0279 Ha	1097080
Area A Deposited Plan 583994	Easement		
Area B Deposited Plan 583994	Easement		
Area C Deposited Plan 583994	Easement		
Total Area		0.0558 Ha	

Mark and Vector

Survey Number DP 583994

Meridional Circuit Mount Eden 2000

From	To	Code	Bearing	Adpt Surv	Bearing Correction	Distance	Adpt Surv	Class
SS 1187 SO 48355	SS 1185 SO 48355	ob0	84°48'30"	M		100.60 M		
SS 1187 SO 48355	UNMK 2 DP 355924	ob1	354°47'50"	A	LT 355924	0°00'00"	1.01 A	LT 355924
SS 1187 SO 48355	AP 1 DP 583994	ob2	354°47'50"	M		19.53 M		
AP 1 DP 583994	AP 2 DP 583994	ob9	354°47'50"	M		11.41 M		
AP 2 DP 583994	AP 3 DP 583994	ob11	354°47'50"	M		4.72 M		
AP 3 DP 583994	AP 4 DP 583994	ob54	354°47'50"	M		2.10 M		
AP 2 SO 479150	SS 1202 SO 48355	ob24	354°47'50"	A	SO 479150	0°00'00"	61.76 A	SO 479150
UNMK 2 DP 355924	SSBD 6 DP 583994	ob8	84°48'27"	A	LT 355924	0°00'00"	1.01 A	LT 355924
SSBD 6 DP 583994	BS 7 DP 583994	ob14	84°48'00"	A	DP 242	0°00'00"	7.91 C	Class A
BS 7 DP 583994	SSBD 8 DP 583994	ob16	84°48'00"	A	DP 242	0°00'00"	7.94 C	Class A
SSBD 8 DP 583994	PEG (20/R/21) DP 242	ob18	84°48'00"	C		24.38 C		
PEG (20/R/21) DP 242	PEG (23/R) DP 242	ob19	84°48'00"	A	DP 242	0°00'00"	40.23 A	DP 242
PEG (23/R) DP 242	ABD (1185A) DP 202358	ob21	84°48'00"	A	DP 242	0°00'00"	20.12 A	DP 242
ABD (1185A) DP 202358	SS 1185 SO 48355	ob23	219°49'00"	A	LT 183492	0°00'00"	1.42 A	LT 183492
SSBD 6 DP 583994	SSBD 9 DP 583994	ob15	354°47'50"	A	SO 479150	0°00'00"	35.16 C	Class A
SSBD 9 DP 583994	UNMK 1 DP 539253	ob25	354°47'50"	A	SO 479150	0°00'00"	12.18 C	
UNMK 1 DP 539253	ABD 4 SO 479150	ob52	354°47'50"	A	SO 479150	0°00'00"	60.88 A	SO 479150
ABD 4 SO 479150	AP 2 SO 479150	ob27	194°01'00"	A	SO 479150	0°00'00"	3.07 A	SO 479150
SSBD 9 DP 583994	SSBD 10 DP 583994	ob26	84°46'30"	C		7.84 C		Class A
SSBD 10 DP 583994	SSBD 11 DP 583994	ob28	84°46'30"	C		8.01 C		Class A
SSBD 11 DP 583994	PEG 12 DP 583994	ob29	174°47'30"	C		31.23 C		Class A
PEG 12 DP 583994	SSBD 8 DP 583994	ob31	174°47'30"	C		3.94 C		Class A
SSBD 11 DP 583994	PEG (13) DP 242	ob30	84°46'30"	A	DP 242	0°00'00"	24.38 A	DP 242
PEG (13) DP 242	PEG VA DP 539253	ob32	354°48'00"	A	DP 242	0°00'00"	12.19 A	DP 242
PEG VA DP 539253	ABD IA DP 539253	ob33	84°48'00"	A	DP 242	0°00'00"	40.23 A	DP 242

Mark and Vector

Survey Number DP 583994

Meridional Circuit Mount Eden 2000

From	To	Code	Bearing	Adpt Surv	Bearing Correction	Distance	Adpt Surv	Class
ABD IA DP 539253	MA I DP 539253	ob34	85°46'00"	A DP 539253	0°00'00"	19.12 A	DP 539253	
MA I DP 539253	SS 1185 SO 48355	ob35	174°48'10"	A DP 539253	0°00'00"	48.09 A	DP 539253	
BS 7 DP 583994	UNMK 14 DP 583994	ob17	354°58'00"	C		3.77 C		Class A
UNMK 14 DP 583994	UNMK 15 DP 583994	ob36	354°58'00"	C		9.52 C		Class A
UNMK 15 DP 583994	PEG 16 DP 583994	ob37	354°58'00"	C		8.04 C		Class A
PEG 16 DP 583994	UNMK 17 DP 583994	ob39	354°16'30"	C		2.75 C		Class A
UNMK 17 DP 583994	SSBD 18 DP 583994	ob40	354°16'30"	C		5.09 C		Class A
SSBD 18 DP 583994	SSBD 10 DP 583994	ob41	354°12'00"	C		6.00 C		Class A
UNMK 15 DP 583994	UNMK 19 DP 583994	ob38	84°58'00"	C		0.42 C		Class A
UNMK 19 DP 583994	UNMK 20 DP 583994	ob44	174°58'00"	C		8.19 C		Class A
UNMK 20 DP 583994	UNMK 21 DP 583994	ob45	264°58'00"	C		0.12 C		Class A
UNMK 21 DP 583994	UNMK 22 DP 583994	ob46	174°58'00"	C		1.33 C		Class A
UNMK 22 DP 583994	UNMK 14 DP 583994	ob47	264°58'00"	C		0.30 C		Class A
SSBD 18 DP 583994	UNMK 23 DP 583994	ob42	84°16'30"	C		0.10 C		Class A
UNMK 23 DP 583994	UNMK 24 DP 583994	ob48	174°16'30"	C		5.09 C		Class A
UNMK 24 DP 583994	UNMK 17 DP 583994	ob49	264°16'30"	C		0.10 C		Class A
SSBD 18 DP 583994	UNMK 25 DP 583994	ob43	264°16'30"	C		0.10 C		Class A
UNMK 25 DP 583994	UNMK 26 DP 583994	ob50	174°16'30"	C		5.09 C		Class A
UNMK 26 DP 583994	UNMK 17 DP 583994	ob51	84°16'30"	C		0.10 C		Class A
AP 2 DP 583994	SSBD 9 DP 583994	ob12	5°44'00"	M		5.33 M		
AP 2 DP 583994	SSBD 18 DP 583994	ob13	89°43'00"	M		8.95 M		
SS 1187 SO 48355	SSBD 6 DP 583994	ob3	39°49'00"	M		1.43 M		
SS 1187 SO 48355	BS 7 DP 583994	ob4	78°21'00"	M		8.98 M		
SS 1187 SO 48355	SSBD 8 DP 583994	ob5	81°23'00"	M		16.89 M		

Mark and Vector

Survey Number DP 583994

Meridional Circuit Mount Eden 2000

From	To	Code	Bearing	Adpt Surv	Bearing Correction	Distance	Adpt Surv	Class
SS 1187 SO 48355	PEG 12 DP 583994	ob6	68°27'00" M			17.57 M		
AP 1 DP 583994	PEG 16 DP 583994	ob10	67°27'00" M			9.41 M		
UNMK 1 DP 539253	PEG VA DP 539253	ob53	84°44'00" A	DP 539253	0°00'00"	40.24 A	DP 539253	
PEG (20/R/21) DP 242	PEG (13) DP 242	ob20	354°48'00" A	DP 539253	0°00'00"	35.20 C		
PEG (23/R) DP 242	ABD IA DP 539253	ob22	354°48'00" A	DP 539253	0°00'00"	47.39 A	DP 539253	
AP 3 DP 583994	IS 5 DP 583994	ob55	85°54'20" M			7.52 M		
IS 5 DP 583994	AP 4 DP 583994	ob56	281°22'20" M			7.85 M		
IS 5 DP 583994	SSBD 10 DP 583994	ob57	58°34'00" M			1.48 M		
IS 5 DP 583994	SSBD 11 DP 583994	ob58	80°46'00" M			9.36 M		
AP 4 DP 583994	SS 1202 SO 48355	ob7	354°47'50" M			130.36 M		

Mark Name	Mark Condition	Description
AP 1 DP 583994		in conc footpath
AP 2 DP 583994		in conc footpath
AP 3 DP 583994		in conc footpath
AP 4 DP 583994		in conc footpath
BS 7 DP 583994		top of RW 0.50 AGL
IS 5 DP 583994		in grass 0.20 deep
PEG 16 DP 583994		Plastic Peg
SS 1185 SO 48355		Under cast iron lid with cast iron cover
SS 1187 SO 48355		Under cast iron lid with cast iron cover
SSBD 10 DP 583994		StStl bdy disk on top of fence rail 1.57 AGL
SSBD 11 DP 583994		St Stl bdy disk on top of fence rail 1.3 AGL
SSBD 18 DP 583994		StStl bdy disk on top of the fence rail 1.80 AGL
SSBD 6 DP 583994		StStl bdy disk in conc path
SSBD 8 DP 583994		StStl bdy disk on top of RW 0.50 AGL
SSBD 9 DP 583994		StStl bdy disk on top of RW 0.67 AGL

*** End of Report ***

Schedule / Memorandum

Land Registration District

North Auckland

Survey Number

LT 583994

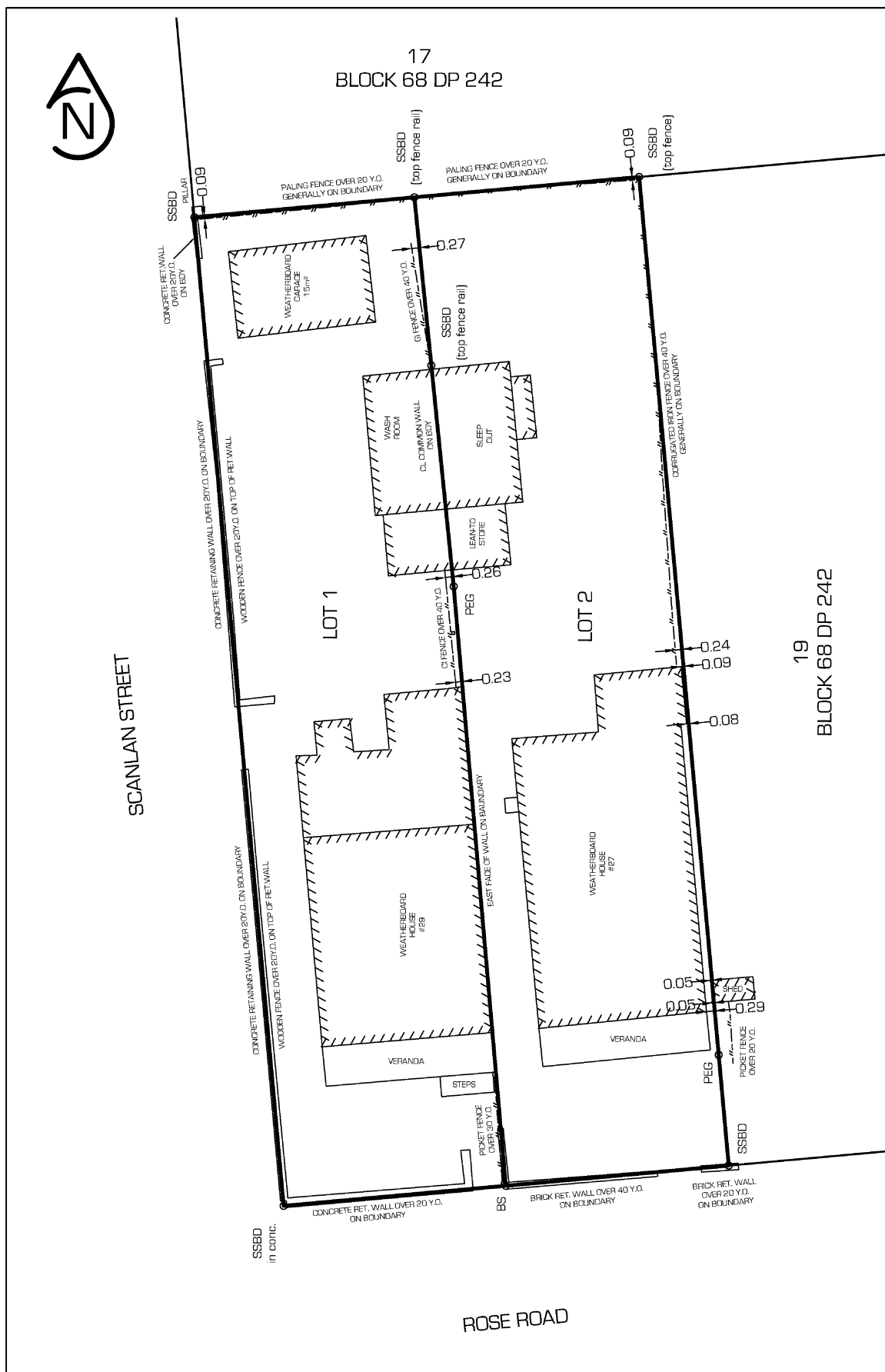
Territorial Authority (the Council)

Auckland Council

Memorandum of Easements

Last Edited: 21 Dec 2022 08:54:29

<u>Purpose</u>	<u>Shown</u>	<u>Burdened Land</u> (<u>Servient Tenement</u>)	<u>Benefited Land</u> (<u>Dominant Tenement</u>)
Overhanging Eaves	A	Lot 2	Lot 1
Party wall	B	Lot 2	Lot 1
	C	Lot 1	Lot 2

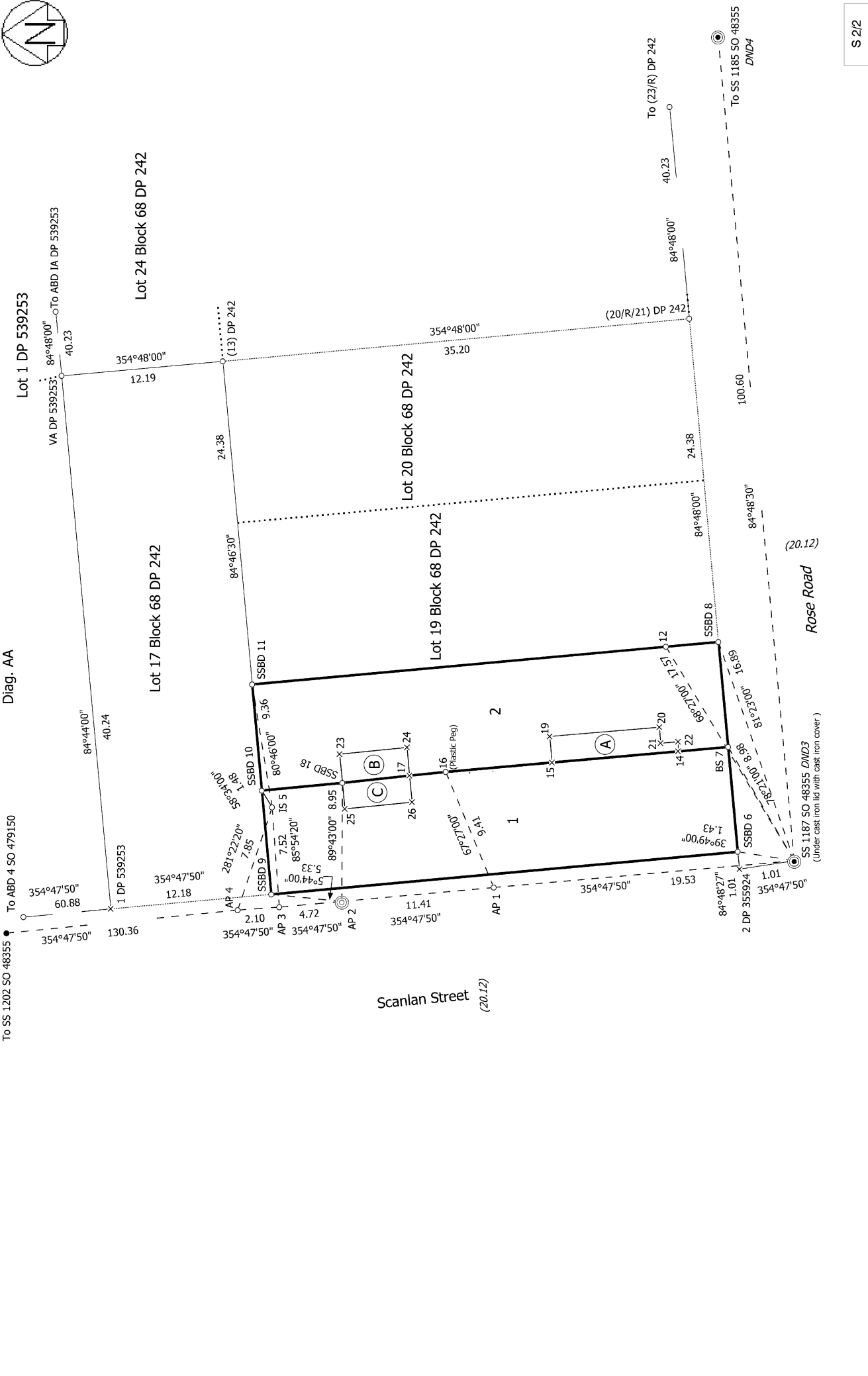


Plan Graphic
DP 583994
 JOB NUMBER: 221261

Surveyor: BARRY M. ROGERS
 Firm: Kiwi Vision Consultants Ltd.
 Survey Date: 16/12/2022

OCCUPATION DIAGRAM

Land District: North Auckland

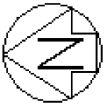


S 2/2

LOTS 1 - 2 BEING A SUBDIVISION OF PART LOT 18 SECTION 68 DP 242

Surveyor: Barry Michael Rogers
 Firm: Kiwi Vision Consultants Limited
 Date of Survey: 20/12/2022

Record of Survey
 LT 583994
 Approved on: 2/10/2023

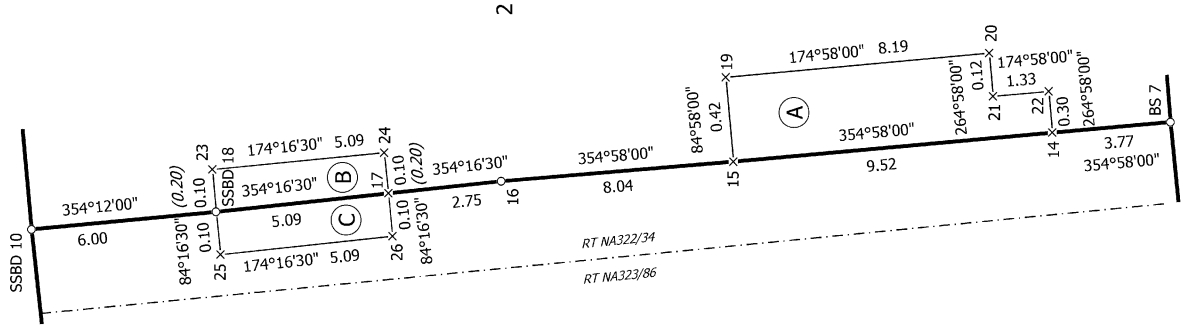


Diag. AA

Diag. A

Lot 17 Block 68 DP 242

Lot 19 Block 68 DP 242



Rose Road
Legal Road

Scanlan Street
Legal Road

T 1/1

Record of Survey
LT 583994
Approved on: 21/10/2023

Surveyor: Barry Michael Rogers
Firm: Kiwi Vision Consultants Limited
Date of Survey: 20/12/2022

LOTS 1 - 2 BEING A SUBDIVISION OF PART LOT 18 SECTION 68 DP 242