



Record of Survey - LT 576342

Survey Number LT 576342
Surveyor Reference D12396-230266
Surveyor Maaike Louise Duncan
Survey Firm Terramark Ltd
Surveyor Declaration I Maaike Louise Duncan, being a licensed cadastral surveyor, certify that--
(a) this dataset provided by me and its related survey are accurate, correct and in accordance with the Cadastral Survey Act 2002 and Cadastral Survey Rules 2021; and
(b) the survey was undertaken by me or under my personal direction.
Declared on 08 Nov 2023 12:26 PM

Survey Details

Dataset Description Lots 1-6 being a Subdivision of Lot 3 DP 337908 & Lot 2 DP 307474
Purpose LT Subdivision
Status Approved as to Survey
Land District Otago
Meridional Circuit North Taieri 2000

Type	Survey
Survey Class	Class B
Vertical Datum	None

Survey Dates

Surveyed Date	23/11/2022	Certified Date	08/11/2023
Submitted Date	08/11/2023 12:26:10	Survey Approval Date	08/11/2023
Deposit Date			

Referenced Surveys

Survey Number	Land District	Bearing Correction
DP 341794	Otago	0°00'00"
DP 25204	Otago	0°00'00"
DP 307474	Otago	0°00'00"
DP 337908	Otago	0°00'00"
DP 375228	Otago	0°00'00"
DP 407048	Otago	0°00'00"
DP 550691	Otago	0°00'00"

Territorial Authorities

Clutha District

Comprised In

RT 155883
RT 28959

Created Parcels

Parcels	Parcel Intent	Area	RT Reference
Lot 1 Deposited Plan 576342	Fee Simple Title	2.0703 Ha	1141827
Lot 2 Deposited Plan 576342	Fee Simple Title	0.8267 Ha	1141828
Lot 3 Deposited Plan 576342	Fee Simple Title	2.1203 Ha	1141829
Lot 4 Deposited Plan 576342	Fee Simple Title	0.5399 Ha	1141830



Record of Survey - LT 576342

Created Parcels

Parcels	Parcel Intent	Area	RT Reference
Lot 5 Deposited Plan 576342	Fee Simple Title	0.7900 Ha	1141831
Lot 6 Deposited Plan 576342	Fee Simple Title	6.8596 Ha	1141832
Area A Deposited Plan 576342	Easement		
Total Area		<hr/> 13.2068 Ha	

Mark and Vector

Survey Number DP 576342

Meridional Circuit North Taieri 2000

From	To	Code	Bearing	Adpt Surv	Bearing Correction	Distance	Adpt Surv	Class
IT II DP 25204	IS IV DP 25204	ob117	197°30'00"	A DP 25204	0°00'00"	172.32	A DP 25204	
IS IV DP 25204	IT III DP 25204	ob70	198°05'20"	M		353.13	M	
IT III DP 25204	IS 100 DP 576342	ob73	199°21'35"	M		171.56	M	
IS 100 DP 576342	IT XXI DP 25204	ob75	90°03'20"	M		278.24	M	
IT XXI DP 25204	IS III DP 307474	ob84	94°54'30"	M		267.40	M	
IS III DP 307474	IT II DP 307474	ob88	77°41'10"	A DP 307474	0°00'00"	137.51	A DP 307474	
IT II DP 307474	IT XI DP 25204	ob90	132°08'50"	A DP 307474	0°00'00"	73.03	A DP 307474	
IT XI DP 25204	IT XVII DP 25204	ob94	251°11'20"	A DP 307474	0°00'00"	578.31	A DP 307474	
IT XVII DP 25204	IT I DP 307474	ob96	297°10'20"	A DP 307474	0°00'00"	135.54	A DP 307474	
IT I DP 307474	IT XV DP 25204	ob97	251°12'00"	A DP 307474	0°00'00"	333.20	A DP 307474	
IT XV DP 25204	IT V DP 25204	ob98	26°49'30"	A DP 25204	0°00'00"	247.43	A DP 25204	
IT V DP 25204	IT I DP 337908	ob99	211°52'00"	A DP 337908	0°00'00"	160.85	A DP 337908	
IT I DP 337908	IT VI DP 337908	ob103	215°44'40"	A DP 337908	0°00'00"	130.40	A DP 337908	
IT VI DP 337908	IT VII DP 337908	ob106	196°26'40"	M		152.39	M	
IT VII DP 337908	IT XI DP 337908	ob0	290°00'10"	M		174.52	M	
IT XI DP 337908	IT IV DP 337908	ob108	186°30'30"	A DP 337908	0°00'00"	122.55	A DP 337908	
IT IV DP 337908	IT V DP 337908	ob110	194°49'35"	A DP 337908	0°00'00"	392.19	A DP 337908	
IT I DP 337908	IT II DP 337908	ob104	276°06'00"	A DP 337908	0°00'00"	156.71	A DP 337908	
IT II DP 337908	IT X DP 337908	ob13	245°52'20"	A DP 337908	0°00'00"	55.33	A DP 337908	
IT X DP 337908	IT VIII DP 337908	ob14	236°55'20"	M		56.99	M	
IT VIII DP 337908	IT IX DP 337908	ob15	261°23'00"	M		136.08	M	
IT IX DP 337908	IT III DP 337908	ob21	298°58'00"	M		22.11	M	
IT III DP 337908	IT IV DP 337908	ob27	157°29'20"	A DP 337908	0°00'00"	289.35	A DP 337908	
IT I DP 337908	PEG 1 DP 337908	ob105	229°19'10"	A DP 337908	0°00'00"	83.60	A DP 337908	
IT VIII DP 337908	PEG 30 DP 337908	ob16	146°28'00"	A DP 337908	0°00'00"	12.91	A DP 337908	
IT VIII DP 337908	PEG 28 DP 576342	ob17	218°43'20"	M		54.42	M	
IT III DP 337908	POST (30) DP 15967	ob28	194°43'00"	A DP 337908	0°00'00"	12.65	A DP 337908	
IT XI DP 337908	PEG 35 DP 337908	ob109	129°30'00"	A DP 337908	0°00'00"	3.98	A DP 337908	
IT VII DP 337908	DISK 29 DP 576342	ob1	280°13'00"	M		50.26	M	
IT VII DP 337908	PEG 27 DP 337908	ob2	338°57'00"	M		20.95	M	

Mark and Vector

Survey Number DP 576342

Meridional Circuit North Taieri 2000

From	To	Code	Bearing	Adpt Surv	Bearing Correction	Distance	Adpt Surv	Class
IT V DP 25204	PEG T DP 576342	ob100	46°25'20"	A DP 307474	0°00'00"	111.08 A	DP 307474	
IT V DP 25204	PEG IVB DP 307474	ob101	88°58'00"	A DP 307474	0°00'00"	16.17 A	DP 307474	
IT V DP 25204	PEG IVa DP 307474	ob102	186°04'00"	A DP 307474	0°00'00"	25.76 A	DP 307474	
IT XI DP 25204	PEG P4/5/R DP 25204	ob95	339°09'30"	A DP 25204	0°00'00"	77.20 A	DP 25204	
IS III DP 307474	PEG IIIA DP 307474	ob89	120°46'20"	A DP 307474	0°00'00"	97.15 A	DP 307474	
PEG 30 DP 337908	PEG R DP 576342	ob30	232°24'40"	A DP 337908	0°00'00"	30.99 A	DP 337908	Class B
PEG R DP 576342	PEG 28 DP 576342	ob57	232°24'40"	A DP 337908	0°00'00"	20.97 A	DP 337908	Class B
PEG 28 DP 576342	PEG 14 DP 337908	ob32	279°15'50"	A DP 337908	0°00'00"	75.12 A	DP 337908	Class B
PEG 14 DP 337908	POST (30) DP 15967	ob33	279°47'50"	A DP 337908	0°00'00"	49.65 A	DP 337908	Class B
POST (30) DP 15967	POST (51) DP 15967	ob34	180°16'20"	A DP 337908	0°00'00"	55.70 A	DP 337908	Class B
POST (51) DP 15967	PEG 35 DP 337908	ob68	121°25'20"	A DP 337908	0°00'00"	153.75 A	DP 337908	Class B
PEG 35 DP 337908	PEG G DP 576342	ob35	113°24'30"	A DP 337908	0°00'00"	60.07 A	DP 337908	Class B
PEG G DP 576342	DISK 29 DP 576342	ob53	113°24'30"	A DP 337908	0°00'00"	61.41 A	DP 337908	Class B
DISK 29 DP 576342	PEG 28 DP 337908	ob36	97°35'00"	A DP 337908	0°00'00"	19.52 A	DP 337908	Class B
PEG 28 DP 337908	PEG 27 DP 337908	ob38	59°40'20"	A DP 337908	0°00'00"	26.17 A	DP 337908	Class B
PEG 27 DP 337908	PEG J DP 576342	ob37	19°37'50"	A DP 337908	0°00'00"	73.43 A	DP 337908	Class B
PEG J DP 576342	PEG K DP 576342	ob54	19°37'50"	A DP 337908	0°00'00"	14.75 A	DP 337908	Class B
PEG K DP 576342	PEG 1 DP 337908	ob56	19°37'50"	A DP 337908	0°00'00"	100.74 A	DP 337908	Class B
PEG T DP 576342	PEG P4/5 DP 25204	ob39	89°30'00"	A DP 25204	0°00'00"	299.65 A	DP 25204	Class B
PEG IVa DP 307474	PEG E DP 576342	ob42	89°30'00"	A DP 307474	0°00'00"	167.03 C		Class B
PEG E DP 576342	PEG F DP 576342	ob47	89°30'00"	A DP 307474	0°00'00"	56.73 C		Class B
PEG F DP 576342	PEG VA DP 307474	ob48	89°30'00"	A DP 307474	0°00'00"	165.19 C		Class B
PEG VA DP 307474	PEG IIIA DP 307474	ob69	89°30'00"	A DP 307474	0°00'00"	380.57 A	DP 307474	Class B
PEG IIIA DP 307474	UNMARKED IIIB DP 307474	ob44	89°30'00"	A DP 307474	0°00'00"	37.10 A	DP 307474	Class B

Mark and Vector

Survey Number DP 576342

Meridional Circuit North Taieri 2000

From	To	Code	Bearing	Adpt Surv	Bearing Correction	Distance	Adpt Surv	Class
PEG T DP 576342	PEG A DP 576342	ob40	220°07'20"	A DP 25204	0°00'00"	20.84 C		Class B
PEG A DP 576342	PEG B DP 576342	ob51	220°07'20"	A DP 25204	0°00'00"	55.49 C		Class B
PEG B DP 576342	PEG IVB DP 307474	ob49	220°07'20"	A DP 25204	0°00'00"	23.43 C		Class B
PEG IVB DP 307474	PEG IVa DP 307474	ob41	216°06'20"	A DP 307474	0°00'00"	32.07 A DP 307474		Class B
IT VIII DP 337908	PEG R DP 576342	ob18	210°26'00"	M		34.40 M		
IT VIII DP 337908	PEG Q DP 576342	ob19	200°15'00"	M		39.29 M		
IT VIII DP 337908	PEG P DP 576342	ob20	203°22'00"	M		52.62 M		
IT XXI DP 25204	IT XVII DP 25204	ob85	201°59'50"	M		246.99 M		
IT XXI DP 25204	PEG P4/5 DP 25204	ob86	304°43'30"	A DP 25204	0°00'00"	44.73 A DP 25204		
PEG P4/5 DP 25204	PEG P4/5/R DP 25204	ob67	89°30'00"	A DP 25204	0°00'00"	464.25 C		Class B
IT VII DP 337908	PEG J DP 576342	ob3	10°55'50"	M		90.36 M		
IT VII DP 337908	PEG K DP 576342	ob4	12°08'50"	M		104.96 M		
IT VII DP 337908	PEG L DP 576342	ob5	9°44'50"	M		110.73 M		
IT VII DP 337908	PEG M DP 576342	ob6	0°07'40"	M		103.26 M		
IT VII DP 337908	PEG S DP 576342	ob7	338°28'50"	M		126.00 M		
IT VII DP 337908	PEG H DP 576342	ob8	335°10'40"	M		126.63 M		
IT VII DP 337908	PEG O DP 576342	ob9	332°36'00"	M		141.92 M		
IT VII DP 337908	PEG N DP 576342	ob10	337°08'50"	M		138.43 M		
IT VII DP 337908	PEG G DP 576342	ob11	287°28'20"	M		110.92 M		
PEG 30 DP 337908	PEG 34 DP 337908	ob31	58°40'00"	A DP 337908	0°00'00"	74.63 A DP 337908		Class B
PEG 34 DP 337908	PEG 11 DP 337908	ob29	71°19'00"	A DP 337908	0°00'00"	35.50 A DP 337908		Class B
PEG 11 DP 337908	PEG 5 DP 337908	ob26	84°19'00"	A DP 337908	0°00'00"	20.01 A DP 337908		Class B
PEG 5 DP 337908	PEG 4 DP 337908	ob25	115°29'00"	A DP 337908	0°00'00"	38.85 A DP 337908		Class B
PEG 4 DP 337908	PEG 3 DP 337908	ob24	121°47'40"	A DP 337908	0°00'00"	44.00 A DP 337908		Class B

Mark and Vector

Survey Number DP 576342

Meridional Circuit North Taieri 2000

From	To	Code	Bearing	Adpt Surv	Bearing Correction	Distance	Adpt Surv	Class
PEG 3 DP 337908	PEG 2 DP 337908	ob23	179°42'40"	A DP 337908	0°00'00"	10.33	A DP 337908	Class B
PEG 2 DP 337908	PEG 1 DP 337908	ob22	216°06'20"	A DP 337908	0°00'00"	10.66	A DP 337908	Class B
PEG Q DP 576342	PEG R DP 576342	ob64	332°00'00"			8.15	C	Class B
PEG O DP 576342	PEG N DP 576342	ob58	82°17'00"			11.66	C	Class B
PEG N DP 576342	PEG M DP 576342	ob59	114°14'10"			59.21	C	Class B
PEG M DP 576342	PEG L DP 576342	ob60	72°24'00"			19.43	C	Class B
PEG L DP 576342	PEG K DP 576342	ob63	152°54'00"			7.32	C	Class B
PEG J DP 576342	UNMK 69 DP 576342	ob55	294°13'20"			21.38	C	Class B
UNMK 69 DP 576342	PEG S DP 576342	ob45	294°13'20"			48.08	C	Class B
PEG S DP 576342	PEG H DP 576342	ob62	251°46'00"			7.31	C	Class B
PEG H DP 576342	PEG G DP 576342	ob61	212°49'10"			97.13	C	Class B
PEG P DP 576342	PEG Q DP 576342	ob65	32°26'00"			13.56	C	Class B
PEG P DP 576342	PEG O DP 576342	ob66	114°12'50"			99.04	C	Class B
IS 100 DP 576342	PEG F DP 576342	ob76	133°17'20"	M		113.23	M	
IS 100 DP 576342	PEG E DP 576342	ob77	161°47'50"	M		82.26	M	
IS 100 DP 576342	PEG IVa DP 307474	ob78	240°36'30"	M		162.20	M	
IS 100 DP 576342	PEG B DP 576342	ob79	251°33'40"	M		113.14	M	
IS 100 DP 576342	PEG A DP 576342	ob80	275°18'20"	M		71.87	M	
IS 100 DP 576342	PEG T DP 576342	ob81	291°13'50"	M		62.36	M	
IS 100 DP 576342	PEG C DP 576342	ob82	61°02'00"	M		15.18	M	
IS 100 DP 576342	PEG D DP 576342	ob83	218°05'30"	M		44.57	M	
PEG A DP 576342	PEG C DP 576342	ob52	89°31'30"			84.85	C	Class B
PEG B DP 576342	PEG D DP 576342	ob50	89°29'40"			79.84	C	Class B
PEG D DP 576342	PEG E DP 576342	ob107	129°00'00"			68.44	C	Class B

Mark and Vector

Survey Number DP 576342

Meridional Circuit North Taieri 2000

From	To	Code	Bearing	Adpt Surv	Bearing Correction	Distance	Adpt Surv	Class
IT XXI DP 25204	IS XX DP 576342	ob87	22°37'45" M			191.23 M		
IT III DP 25204	IS XX DP 576342	ob74	87°12'35" M			295.30 M		
PEG C DP 576342	PEG F DP 576342	ob118	140°52'30" C			109.56 C		Class B
PEG P4/5/R DP 25204	UNMK 70 DP 576342	ob43	160°24'00" C			27.04 C		Class B
UNMK 70 DP 576342	UNMK 102 DP 576342	ob111	168°05'00" C			22.28 C		Class B
UNMK 102 DP 576342	UNMK 103 DP 576342	ob112	191°08'00" C			20.39 C		Class B
UNMK 103 DP 576342	UNMK R2 DP 25204	ob113	223°16'00" C			10.70 C		Class B
UNMK R2 DP 25204	UNMK 97 DP 576342	ob114	246°27'00" C			19.00 C		Class B
UNMK 97 DP 576342	UNMK 55 DP 576342	ob115	237°05'00" C			17.86 C		Class B
UNMK 55 DP 576342	UNMARKED IIIB DP 307474	ob116	227°47'00" C			14.11 C		Class B
UNMK 69 DP 576342	PEG M DP 576342	ob46	24°14'00" C			6.33 C		Class B
IT VII DP 337908	PEG 28 DP 337908	ob12	281°53'20" M			30.78 M		
IT III DP 25204	IS XXIII DP 25204	ob72	16°34'05" M			153.11 M		
IS XXIII DP 25204	IS IV DP 25204	ob71	19°15'00" A	DP 25204	0°00'00"	200.09 A	DP 25204	
IT XI DP 25204	UNMARKED IIIB DP 307474	ob91	246°23'00" A	DP 25204	0°00'00"	74.14 A	DP 25204	
IT XI DP 25204	UNMK R2 DP 25204	ob92	263°21'20" A	DP 25204	0°00'00"	25.24 A	DP 25204	

Mark Name	Mark Condition	Description
IS 100 DP 576342		Down 0.3m in grass
IS XX DP 576342		IT XX DP 25204 renewed with IS
IT VII DP 337908		Down 0.3m in grass
IT VIII DP 337908		Down 0.2m on grass berm
UNMK 102 DP 576342		No occupation
UNMK 103 DP 576342		No occupation
UNMK 55 DP 576342		No occupation
UNMK 70 DP 576342		No occupation
UNMK 97 DP 576342		No occupation
UNMK R2 DP 25204		No occupation



Mark and Vector

Survey Number DP 576342
Meridional Circuit North Taieri 2000

Mark Name	Mark Condition	Description
IT I DP 337908	Destroyed	
IT II DP 307474	Destroyed	

*** End of Report ***

LT 576342 Schedule/Memorandum

Land registration district

Otago

Territorial authority

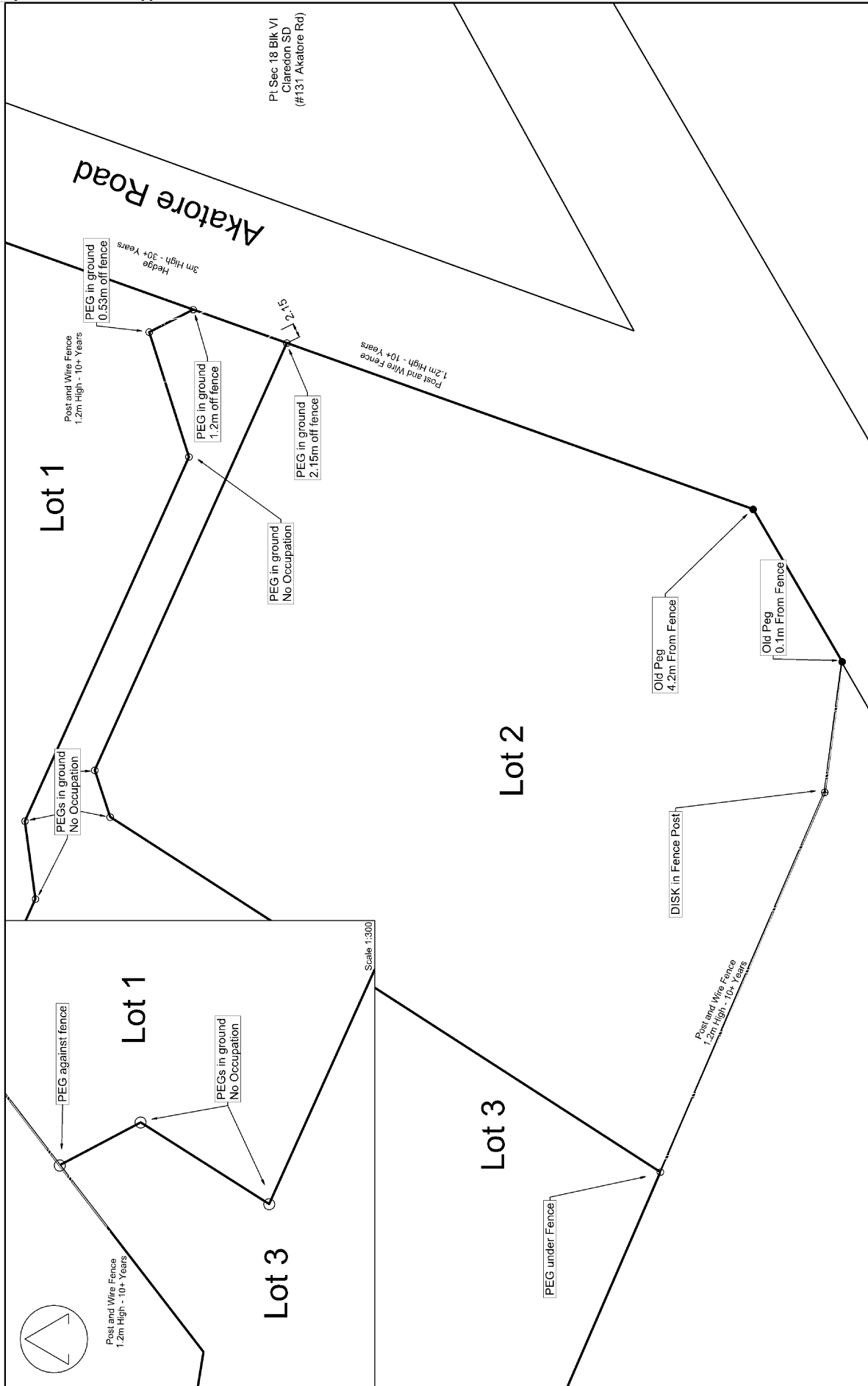
Clutha District

Memorandum of Easements

Parcels shown with a prefix of *HL*- include height-limited boundaries

PURPOSE	SHOWN	BURDENED LAND	BENEFITED LAND
Right of way Right to convey electricity, telecommunications	A	Lot 3	Lot 1, Lot 2

Occupation Diagram



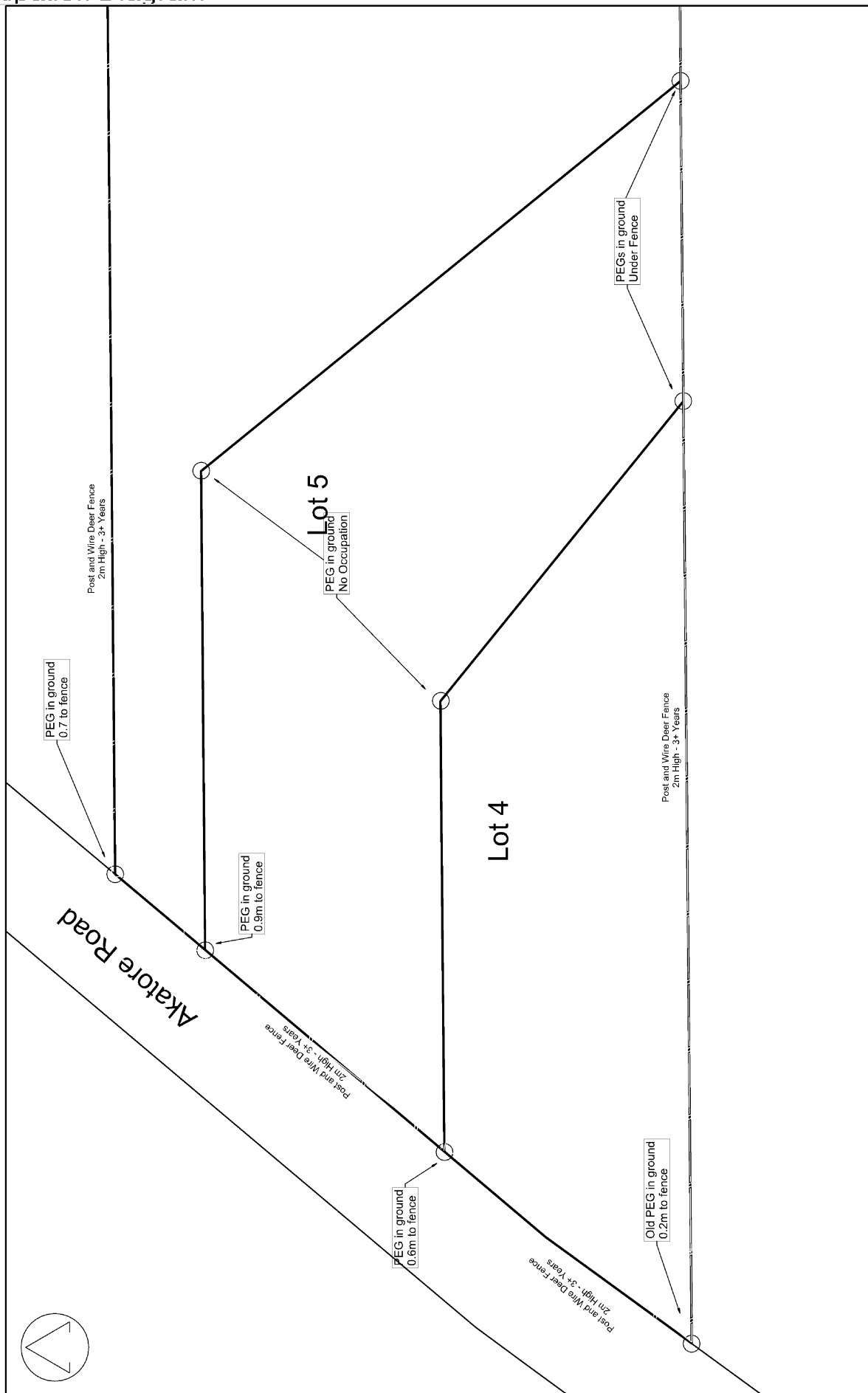
<p>Scale (A3)</p> <p>1:500</p>		Reference <p>DP 576342</p>
		Client Reference <p>D12396-B</p>
<p>Date</p> <p>23/06/2022</p>		

Lots 1-6 being Subdivision of
Lot 2 DP 307474 & Lot 3 DP 337908
Occupation Diagram

terrarmark
setting new boundaries

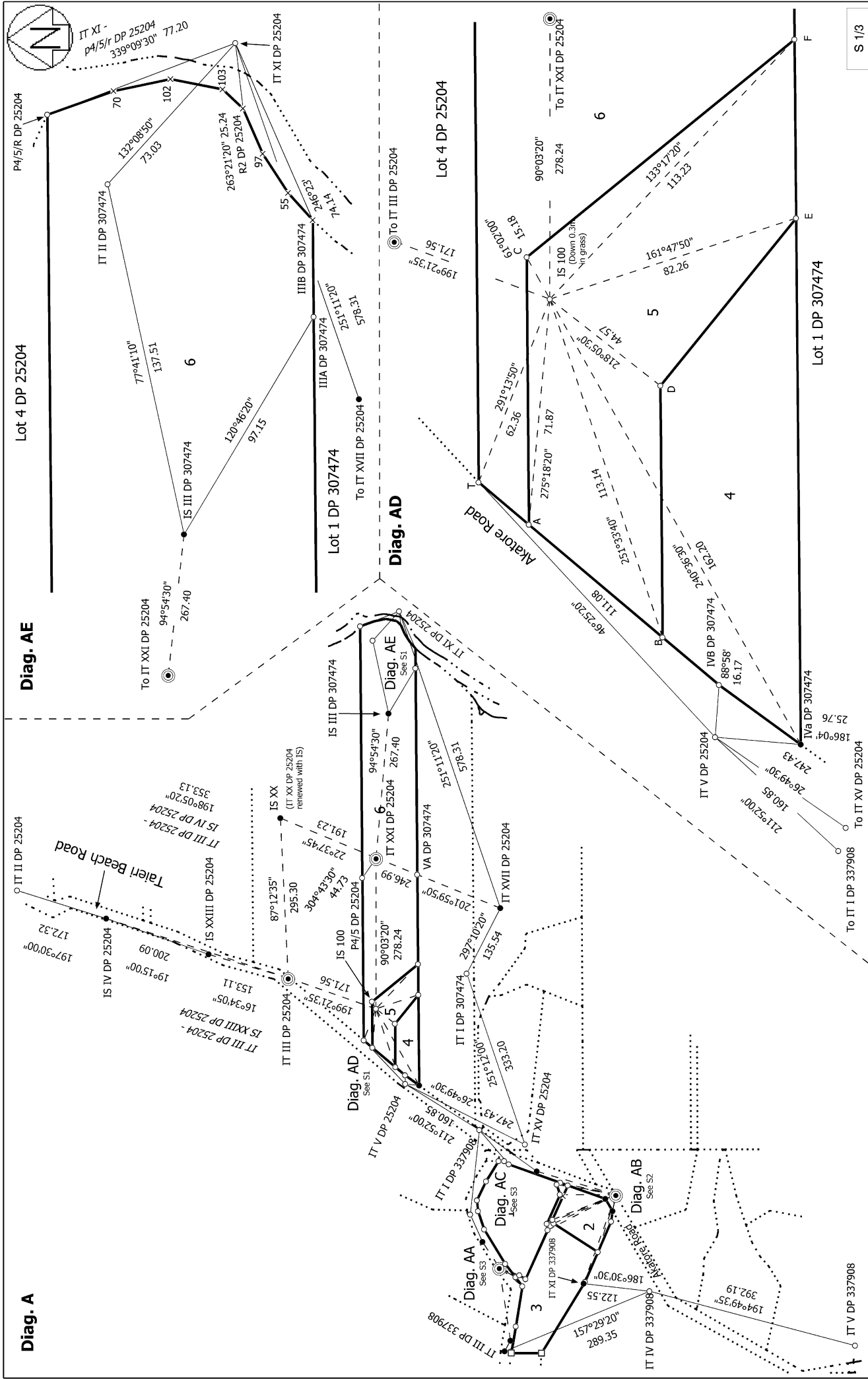
Surveying, Resource Management, & Engineering Consultants

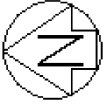
Occupation Diagram



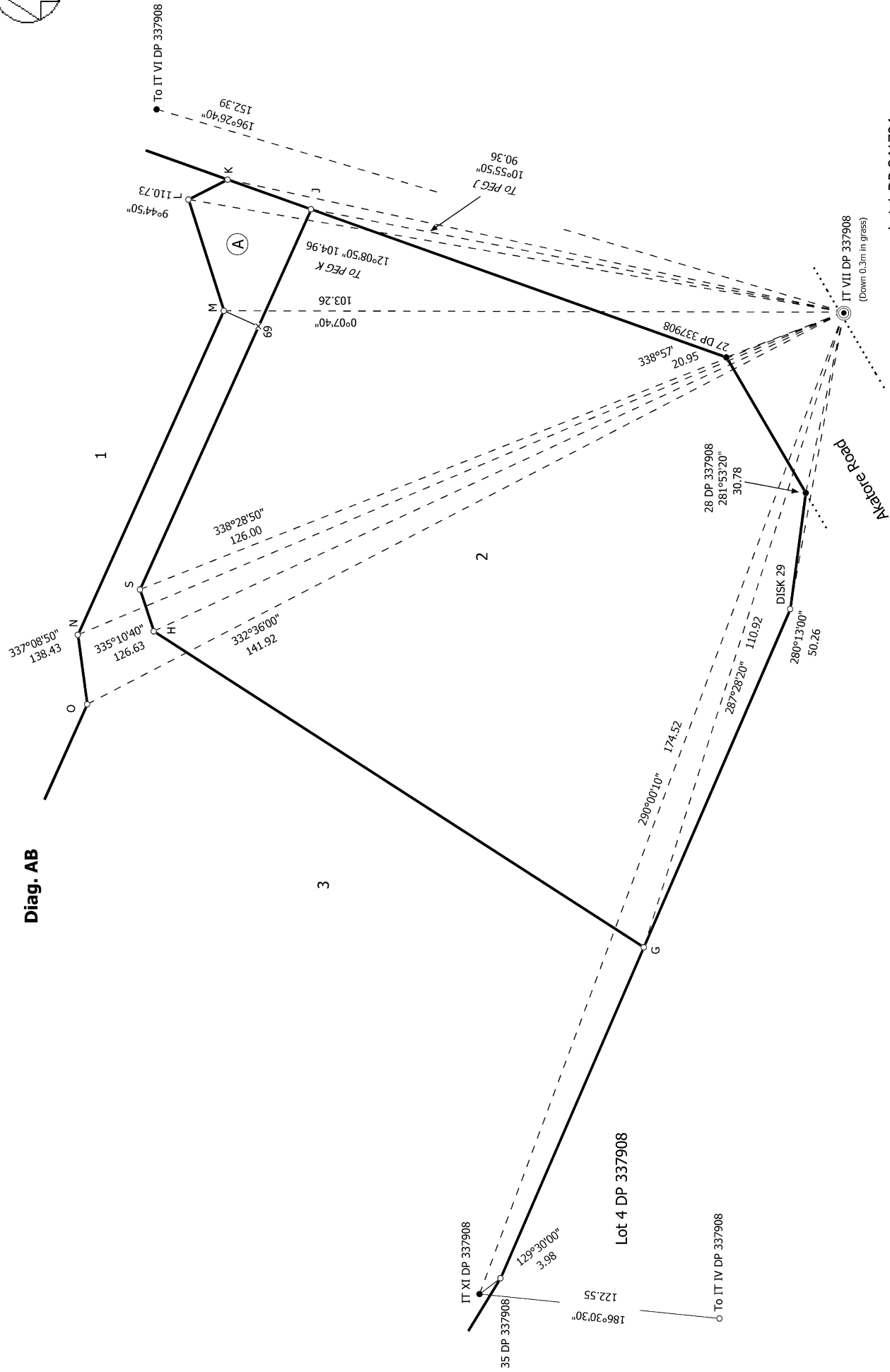
<p>Lots 1-6 being Subdivision of Lot 2 DP 307474 & Lot 3 DP 337908 Occupation Diagram</p>		Scale (A3)	1:600	Reference	DP 576342
		Client Reference	D12396-B		
		Date	23/06/2022		

terramark
setting new boundaries
 Surveying, Resource Management, & Engineering Consultants





Diag. AB



S 2/3

Lot 1 DP 341794

Land District: Otago

Lots 1-6 being a Subdivision of Lot 3 DP 337908 & Lot 2 DP 307474

Surveyor: Maaike Louise Duncan

Firm: Terremark Ltd

Date of Survey: 23/11/2022

Record of Survey

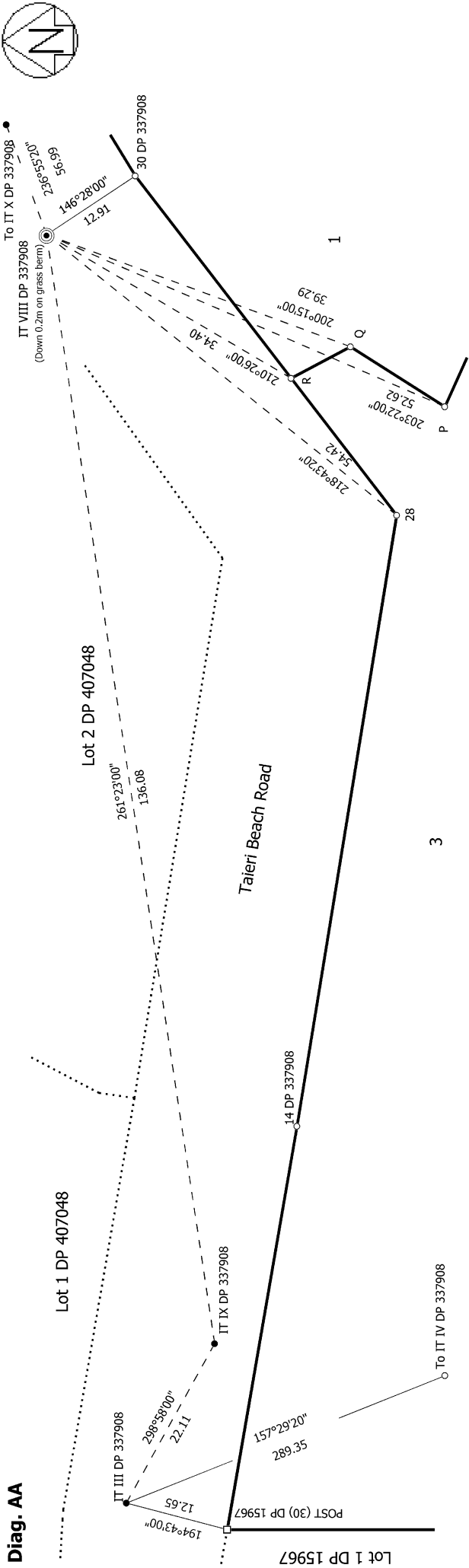
LT 576342

Approved on: 8/11/2023

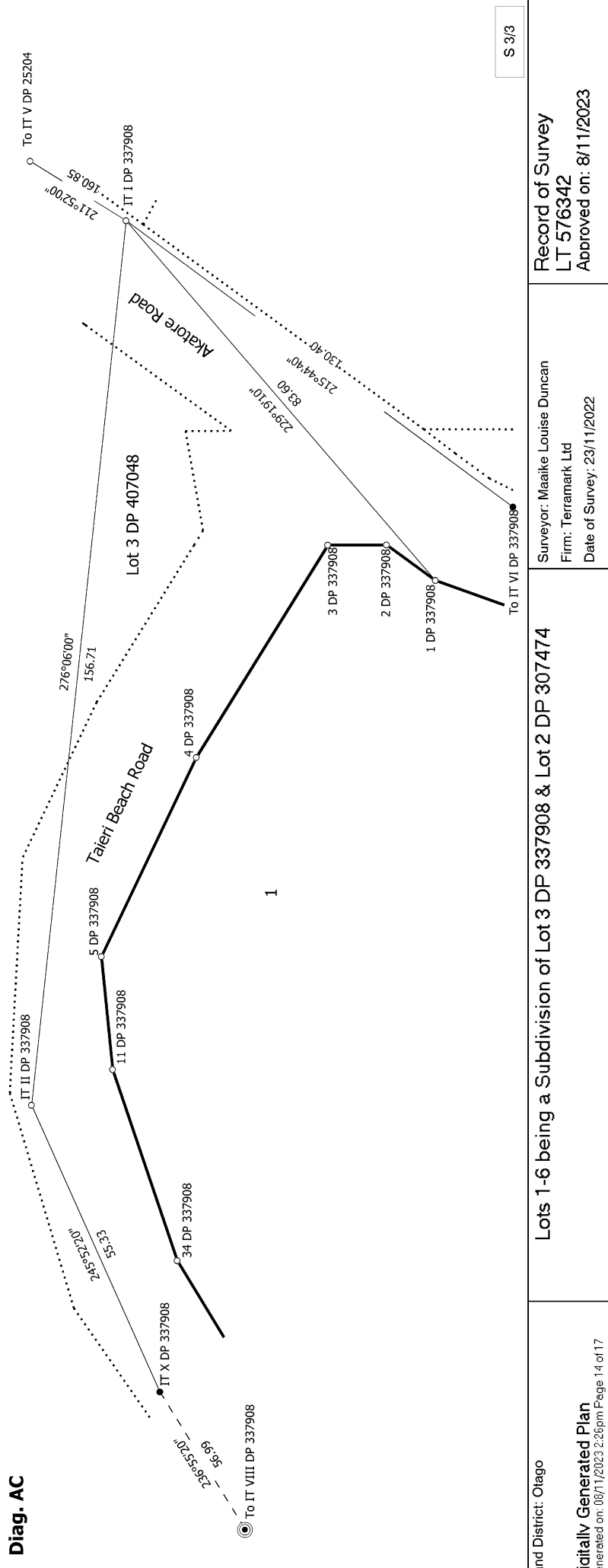
Digitally Generated Plan

Generated on: 08/11/2023 2:26pm Page 13 of 17

Diag. AA



Diag. AC



S 3/3

Land District: Otago

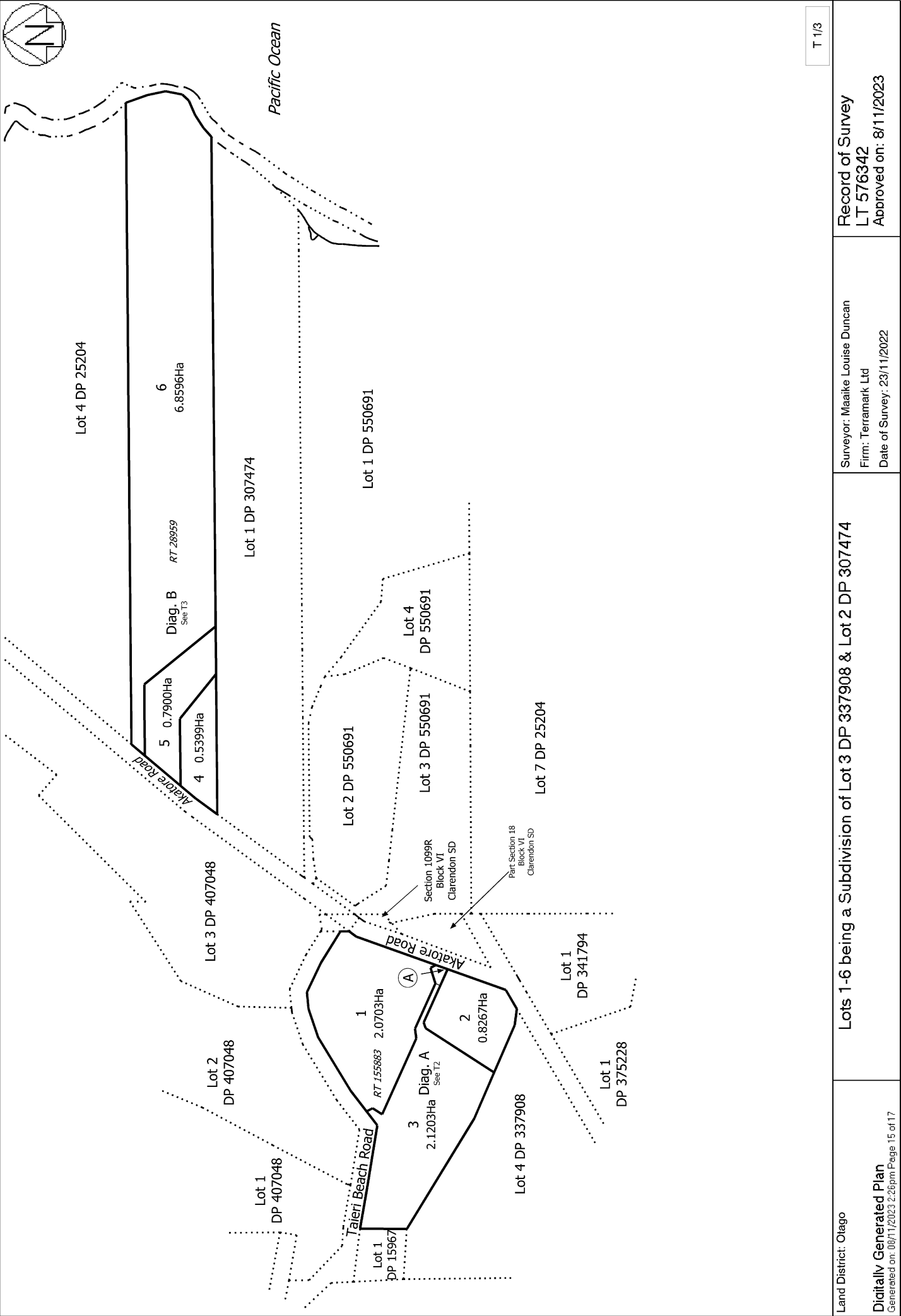
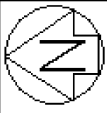
Digitally Generated Plan

Generated on: 08/11/2023 2:26pm Page 14 of 17

Lots 1-6 being a Subdivision of Lot 3 DP 337908 & Lot 2 DP 307474

Surveyor: Maaikie Louise Duncan
Firm: Terramark Ltd
Date of Survey: 23/11/2022

Record of Survey
LT 576342
Approved on: 8/11/2023



Record of Survey
 LT 576342
 Approved on: 8/11/2023

Surveyor: Maaikie Louise Duncan
 Firm: Terremark Ltd
 Date of Survey: 23/11/2022

Lots 1-6 being a Subdivision of Lot 3 DP 337908 & Lot 2 DP 307474



Diag. A

Lot 3 DP 407048

Lot 2 DP 407048

Lot 1 DP 407048

Lot 1
DP 15967

1
2.0703Ha

3
2.1203Ha

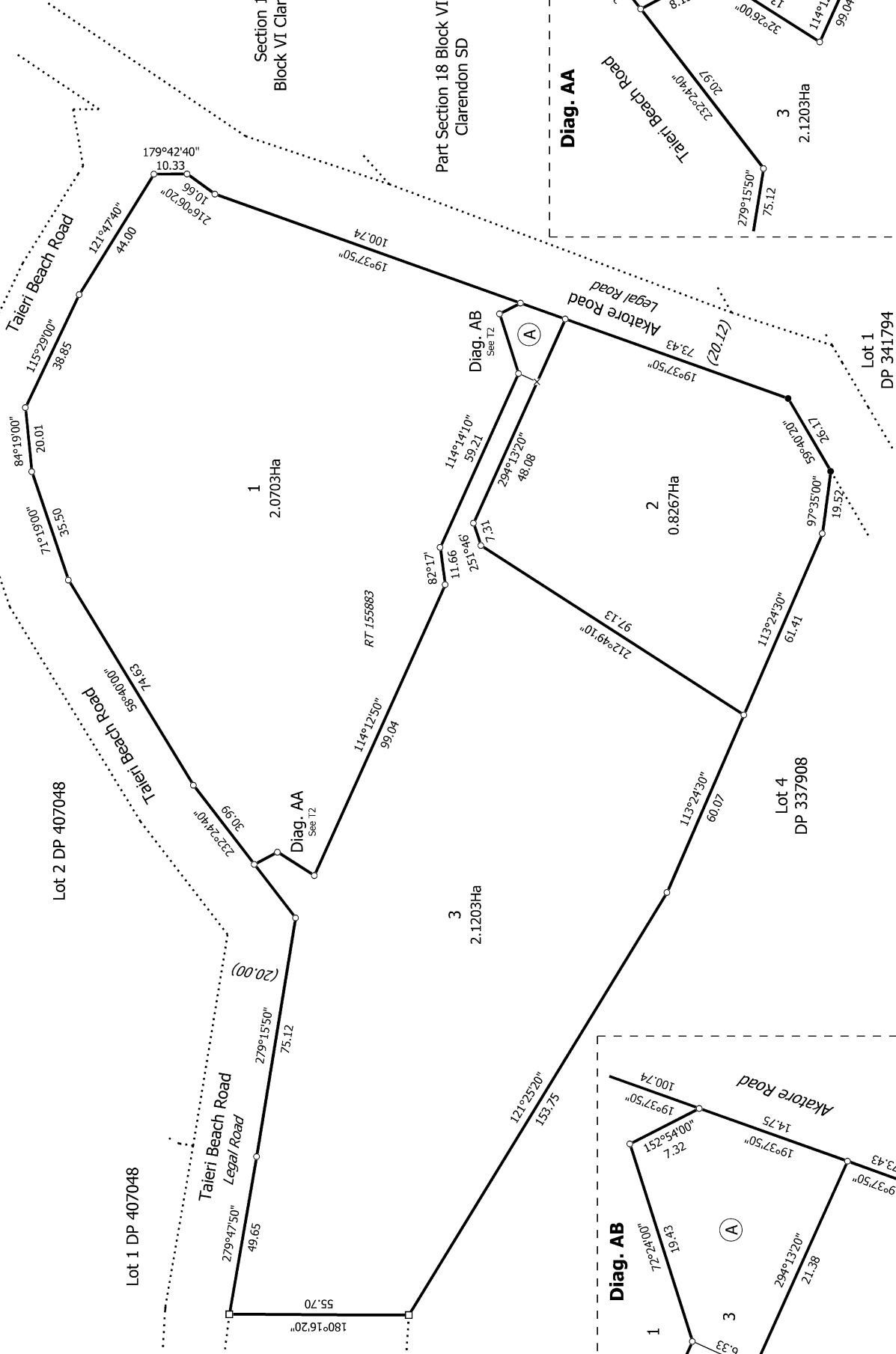
Lot 4
DP 337908

2
0.8267Ha

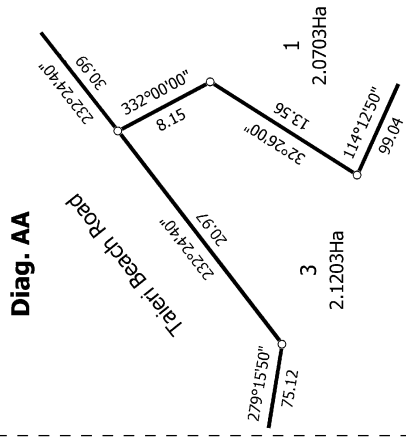
Lot 1
DP 341794

Section 1099R
Block VI Clarendon SD

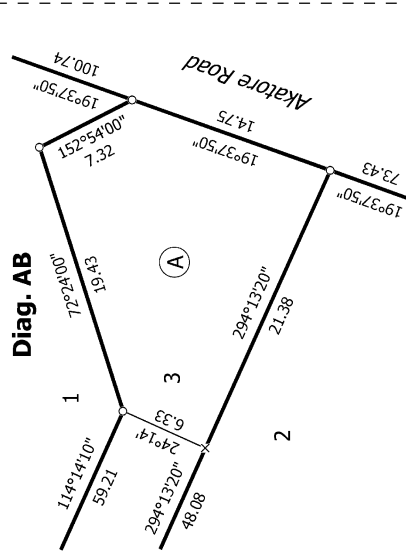
Part Section 18 Block VI
Clarendon SD



Diag. AA



Diag. AB



T 2/3

Land District: Otago

Digitally Generated Plan

Generated on: 08/11/2023 2:26pm Page 16 of 17

Lots 1-6 being a Subdivision of Lot 3 DP 337908 & Lot 2 DP 307474

Surveyor: Maaikie Louise Duncan

Firm: Terramark Ltd

Date of Survey: 23/11/2022

Record of Survey

LT 576342

Approved on: 8/11/2023

