

# Record of Survey - LT 573386

<b>Survey Number</b>	LT 573386		
<b>Surveyor Reference</b>	13874 Palmer CB SB		
<b>Surveyor</b>	Phillip John Lash		
<b>Survey Firm</b>	Reyburn & Bryant 1999 Ltd		
<b>Surveyor Declaration</b>	I Phillip John Lash, being a licensed cadastral surveyor, certify that-- (a) this dataset provided by me and its related survey are accurate, correct and in accordance with the Cadastral Survey Act 2002 and Cadastral Survey Rules 2021; and (b) the survey was undertaken by me or under my personal direction. Declared on 13 Mar 2024 03:27 PM		

## Survey Details

<b>Dataset Description</b>	Lots 1 - 6 being a subdivision of Lot 2 DP 391076, Lot 1 DP 322506 and Lot 1 DP 204980		
<b>Purpose</b>	LT Subdivision		
<b>Status</b>	Approved as to Survey	<b>Type</b>	Survey
<b>Land District</b>	North Auckland	<b>Survey Class</b>	Class B
<b>Meridional Circuit</b>	Mount Eden 2000	<b>Vertical Datum</b>	None

## Survey Dates

<b>Surveyed Date</b>	22/02/2022	<b>Certified Date</b>	13/03/2024
<b>Submitted Date</b>	13/03/2024 15:27:38	<b>Survey Approval Date</b>	14/03/2024
<b>Deposit Date</b>			

## Referenced Surveys

Survey Number	Land District	Bearing Correction
SO 1560	North Auckland	0°00'00"
DP 50149	North Auckland	0°02'00"
DP 91523	North Auckland	0°02'00"
DP 48582	North Auckland	0°02'00"
DP 322506	North Auckland	0°00'00"
DP 391076	North Auckland	0°00'00"
DP 410481	North Auckland	0°00'00"

## Territorial Authorities

Far North District

## Comprised In

RT NA134D/248  
 RT 365563  
 RT 89829  
 RT NA134D/247 Ltd

## Created Parcels

Parcels	Parcel Intent	Area	RT Reference
Lot 1 Deposited Plan 573386	Fee Simple Title	3.4110 Ha	1044493
Lot 2 Deposited Plan 573386	Fee Simple Title	2.8460 Ha	1044493



# Record of Survey - LT 573386

---

## Created Parcels

Parcels	Parcel Intent	Area	RT Reference
Lot 3 Deposited Plan 573386	Fee Simple Title	3.5030 Ha	1044494
Lot 4 Deposited Plan 573386	Fee Simple Title	2.9730 Ha	1044494
Lot 5 Deposited Plan 573386	Fee Simple Title	3.0150 Ha	1044495
Lot 6 Deposited Plan 573386	Fee Simple Title	0.6226 Ha	1044495
Lot 7 Deposited Plan 573386	Common Marine and Coastal Area (Sec 237A(1)(b) RM Act)	0.0115 Ha	
Area A Deposited Plan 573386	Easement		
Area B Deposited Plan 573386	Easement		
Area C Deposited Plan 573386	Easement		
Area D Deposited Plan 573386	Covenant - Land		
Area E Deposited Plan 573386	Covenant - Land		
Area F Deposited Plan 573386	Covenant - Land		
Area G Deposited Plan 573386	Covenant - Land		
Lot 8 Deposited Plan 573386	Common Marine and Coastal Area (Sec 237A(1)(b) RM Act)	0.0154 Ha	
<b>Total Area</b>		<hr/> 16.3975 Ha	

# Mark and Vector

Survey Number DP 573386

Meridional Circuit Mount Eden 2000

From	To	Code	Bearing	Adpt Surv	Bearing Correction	Distance	Adpt Surv	Class
IB 1 DP 391076	IT VI DP 91523	ob0	343°25'00" M			267.40 M		
IT VI DP 91523	IT 8 DP 573386	ob14	234°13'30" M			221.81 M		
IT 8 DP 573386	IS XXIII DP 322506	ob15	184°24'30" M			429.36 M		
IS XXIII DP 322506	IB 1 DP 391076	ob26	43°49'10" M			417.81 M		
IB 1 DP 391076	IT IV DP 48582	ob1	241°03'10" M			208.09 M		
IT IV DP 48582	IT II DP 48582	ob30	226°43'30" M			3.58 M		
IT II DP 48582	IB 1 DP 573386	ob32	158°47'30" M			63.57 M		
IB 1 DP 573386	IB IX DP 322506	ob42	150°49'10" M			182.80 M		
IB IX DP 322506	IB 1 DP 391076	ob43	12°41'55" M			330.10 M		
IT II DP 48582	IB 5 DP 573386	ob33	327°05'30" M			28.89 M		
IB 5 DP 573386	IB 4 DP 573386	ob53	226°13'00" M			55.59 M		
IB 4 DP 573386	IT II DP 48582	ob56	75°43'10" M			57.61 M		
IB IX DP 322506	IB XXVII DP 322506	ob44	216°15'40" M			150.45 M		
IB XXVII DP 322506	IB 3 DP 573386	ob58	288°56'50" M			40.02 M		
IB 3 DP 573386	IB 2 DP 573386	ob59	358°14'10" M			72.24 M		
IB 2 DP 573386	IB IX DP 322506	ob61	74°22'00" M			134.03 M		
IS XXIII DP 322506	SS NAIL XXIV DP 322506	ob27	169°11'10" A	DP 322506	0°00'00"	141.81 A	DP 322506	
SS NAIL XXIV DP 322506	SS NAIL XXV DP 322506	ob64	133°56'40" A	DP 322506	0°00'00"	67.79 A	DP 322506	
SS NAIL XXV DP 322506	IT IV DP 50149	ob68	71°55'30" A	DP 322506	0°00'00"	72.01 A	DP 322506	
IT IV DP 50149	IB XXVI DP 322506	ob69	33°49'30" A	DP 322506	0°00'00"	54.63 A	DP 322506	
IB XXVI DP 322506	IB XXVII DP 322506	ob70	243°31'00" A	DP 322506	0°00'00"	52.04 A	DP 322506	
IT II DP 48582	IS XX DP 322506	ob34	273°39'20" A	DP 322506	0°00'00"	119.43 A	DP 322506	
IS XX DP 322506	IB XXI DP 322506	ob71	221°00'30" A	DP 322506	0°00'00"	39.07 A	DP 322506	
IB XXI DP 322506	IS XXII DP 322506	ob72	276°29'00" A	DP 322506	0°00'00"	53.94 A	DP 322506	
IS XXII DP 322506	IS XXIII DP 322506	ob73	152°48'10" A	DP 322506	0°00'00"	205.29 A	DP 322506	
IB 1 DP 391076	IB 3 DP 391076	ob2	53°04'00" M			73.14 M		
IB 3 DP 391076	IS 4 DP 391076	ob74	204°53'00" A	DP 391076	0°00'00"	42.17 A	DP 391076	
IS 4 DP 391076	IB 1 DP 391076	ob76	262°03'00" A	DP 391076	0°00'00"	41.12 A	DP 391076	
IB 3 DP 391076	PEG DP 102870	ob75	10°07'30" A	DP 391076	0°00'00"	51.25 A	DP 391076	
PEG DP 102870	PEG 2 DP 391076	ob77	214°56'00" A	DP 391076	0°00'00"	8.73 A	DP 391076	Class B

# Mark and Vector

Survey Number DP 573386

Meridional Circuit Mount Eden 2000

From	To	Code	Bearing	Adpt Surv	Bearing Correction	Distance	Adpt Surv	Class
PEG 2 DP 391076	PEG P1 DP 573386	ob79	214°56'00"	A DP 391076	0°00'00"	51.13 C		Class B
PEG P1 DP 573386	PEG 1 DP 391076	ob81	214°56'00"	A DP 391076	0°00'00"	32.49 C		Class B
PEG 1 DP 391076	IB 1 DP 391076	ob83	217°59'00"	A DP 391076	0°00'00"	23.70 A DP 391076		
PEG DP 102870	PEG 4 DP 391076	ob78	148°36'00"	A DP 391076	0°00'00"	45.41 A DP 391076		Class B
PEG 4 DP 391076	PEG XIII A DP 48582	ob86	148°12'00"	A DP 391076	0°00'00"	85.98 A DP 391076		Class B
PEG XIII A DP 48582	PEG XIX DP 48582	ob88	150°00'00"	A DP 391076	0°00'00"	17.56 A DP 48582		Class B
PEG XIX DP 48582	PEG 21 DP 391076	ob89	228°55'00"	A DP 391076	0°00'00"	117.64 A DP 391076		Class B
PEG 21 DP 391076	PEG 3 DP 391076	ob90	228°55'00"	A DP 391076	0°00'00"	23.80 A DP 391076		Class B
PEG 3 DP 391076	PEG XXVII DP 48582	ob91	193°24'30"	A DP 391076	0°00'00"	71.31 A DP 391076		Class B
PEG XXVII DP 48582	PEG 16 DP 391076	ob92	151°05'00"	A DP 391076	0°00'00"	86.22 A DP 391076		Class B
PEG 16 DP 391076	PEG 13 DP 391076	ob93	246°37'00"	A DP 391076	0°00'00"	8.47 A DP 391076		Class B
PEG 13 DP 391076	POST 14 DP 391076	ob94	246°37'00"	A DP 391076	0°00'00"	88.73 A DP 391076		Class B
POST 14 DP 391076	UNMK DP 391076	ob95	228°47'00"	A DP 391076	0°00'00"	25.95 A DP 391076		Class B
UNMK DP 391076	PEG 15 DP 391076	ob96	228°47'00"	A DP 391076	0°00'00"	0.20 A DP 391076		Class B
PEG 15 DP 391076	IB IX DP 322506	ob97	278°51'00"	A DP 391076	0°00'00"	27.81 A DP 391076		
IB 1 DP 391076	PEG P1 DP 573386	ob3	36°13'00"	M		56.18 M		
IB 4 DP 573386	PEG P30 DP 573386	ob57	347°26'30"	M		172.49 M		
PEG P30 DP 573386	PEG P29 DP 573386	ob98	148°18'30"	A DP 48582	0°02'00"	134.46 C		Class B
PEG P29 DP 573386	PEG VII DP 48582	ob100	148°18'30"	A DP 322506	0°00'00"	4.67 C		Class B
PEG VII DP 48582	PEG P21 DP 573386	ob101	148°18'30"	A DP 322506	0°00'00"	12.45 C		Class B
PEG P21 DP 573386	PEG III DP 48582	ob102	148°18'30"	A DP 322506	0°00'00"	28.31 C		Class B
PEG III DP 48582	PEG LXVI DP 48582	ob103	148°18'30"	A DP 322506	0°00'00"	50.65 A DP 48582		Class B
PEG LXVI DP 48582	POST P9 DP 573386	ob104	148°18'30"	A DP 322506	0°00'00"	130.88 C		Class B
POST P9 DP 573386	PEG 4 DP 410481	ob105	148°18'30"	A DP 322506	0°00'00"	75.95 C		Class B

# Mark and Vector

Survey Number DP 573386

Meridional Circuit Mount Eden 2000

From	To	Code	Bearing	Adpt Surv	Bearing Correction	Distance	Adpt Surv	Class
PEG 4 DP 410481	PEG 15 DP 391076	ob106	148°18'30"	A DP 322506	0°00'00"	6.00 A	DP 410481	Class B
IB 5 DP 573386	PEG P29 DP 573386	ob54	335°29'00"	M		16.99 M		
IT II DP 48582	PEG P21 DP 573386	ob35	331°20'00"	M		28.66 M		
IB IX DP 322506	POST P9 DP 573386	ob45	346°36'00"	M		67.29 M		
IB 1 DP 391076	PEG (1) DP 91523	ob4	356°34'00"	A DP 391076	0°00'00"	30.18 A	DP 391076	
PEG (1) DP 91523	UNMK DP 91523	ob107	314°32'00"	A DP 91523	0°02'00"	74.37 A	DP 91523	Class B
UNMK DP 91523	UNMK U1 DP 573386	ob108	314°32'00"	A DP 91523	0°02'00"	8.24 C		Class B
UNMK U1 DP 573386	PEG (2) DP 91523	ob109	314°32'00"	A DP 91523	0°02'00"	59.09 C		Class B
PEG (2) DP 91523	IB 1 DP 391076	ob111	141°32'30"	M		165.39 M		
PEG (2) DP 91523	IS IIA DP 91523	ob112	316°46'00"	A DP 91523	0°02'00"	10.64 A	DP 91523	
IS IIA DP 91523	IT III DP 91523	ob113	314°39'00"	A DP 91523	0°02'00"	41.47 A	DP 91523	
IT III DP 91523	IT VI DP 91523	ob114	35°12'30"	A DP 91523	0°02'00"	109.99 A	DP 91523	
PEG 1 DP 391076	PEG (1) DP 91523	ob84	304°56'00"	A DP 391076	0°00'00"	20.00 A	DP 391076	Class B
IB IX DP 322506	IT L DP 48582	ob46	122°58'00"	A DP 322506	0°00'00"	31.76 A	DP 322506	
IT L DP 48582	PEG XLIX DP 48582	ob115	206°16'00"	A DP 322506	0°00'00"	14.83 A	DP 48582	
PEG XLIX DP 48582	UNMK 1 DP 410481	ob116	328°18'30"	A DP 322506	0°00'00"	14.31 A	DP 410481	Class B
UNMK 1 DP 410481	PEG 5 DP 410481	ob118	328°18'30"	A DP 322506	0°00'00"	6.79 A	DP 410481	Class B
PEG 5 DP 410481	PEG P10 DP 573386	ob120	328°18'30"	A DP 322506	0°00'00"	79.27 C		Class B
PEG P10 DP 573386	UNMK U19 DP 573386	ob122	328°18'30"	A DP 322506	0°00'00"	58.28 C		Class B
UNMK U19 DP 573386	PEG (11) DP 322506	ob123	328°18'30"	A DP 322506	0°00'00"	147.53 C		Class B
PEG (11) DP 322506	IS XX DP 322506	ob124	267°47'30"	A DP 322506	0°00'00"	90.54 A	DP 322506	
IT II DP 48582	PEG (11) DP 322506	ob36	291°08'30"	M		30.78 M		
PEG XLIX DP 48582	PEG XI DP 50149	ob117	146°36'00"	A DP 322506	0°00'00"	3.30 A	DP 50149	Class B
PEG XI DP 50149	PEG XII DP 50149	ob127	210°25'00"	A DP 322506	0°00'00"	53.80 A	DP 50149	Class B
PEG XII DP 50149	PEG (10) DP 322506	ob128	210°26'00"	A DP 322506	0°00'00"	21.38 A	DP 322506	Class B

# Mark and Vector

Survey Number DP 573386

Meridional Circuit Mount Eden 2000

From	To	Code	Bearing	Adpt Surv	Bearing Correction	Distance	Adpt Surv	Class
PEG (10) DP 322506	PEG (9) DP 322506	ob129	240°52'00"	A DP 322506	0°00'00"	1.29 A	DP 322506	Class B
PEG (9) DP 322506	PEG (8) DP 322506	ob130	204°41'00"	A DP 322506	0°00'00"	4.24 A	DP 322506	Class B
PEG (8) DP 322506	PEG (7) DP 322506	ob131	239°12'00"	A DP 322506	0°00'00"	8.07 A	DP 322506	Class B
PEG (7) DP 322506	PEG (6) DP 322506	ob132	244°53'00"	A DP 322506	0°00'00"	8.13 A	DP 322506	Class B
PEG (6) DP 322506	PEG (5) DP 322506	ob133	236°34'00"	A DP 322506	0°00'00"	14.81 A	DP 322506	Class B
PEG (5) DP 322506	PEG (4) DP 322506	ob134	214°38'00"	A DP 322506	0°00'00"	8.06 A	DP 322506	Class B
PEG (4) DP 322506	PEG (3) DP 322506	ob135	237°01'00"	A DP 322506	0°00'00"	8.80 A	DP 322506	Class B
PEG (3) DP 322506	IB XXVI DP 322506	ob136	25°43'00"	A DP 322506	0°00'00"	35.19 A	DP 322506	
IB IX DP 322506	PEG P10 DP 573386	ob47	329°12'30"	M		63.80 M		
PEG (11) DP 322506	PEG (14) DP 322506	ob125	281°41'00"	A DP 322506	0°00'00"	108.33 A	DP 322506	Class B
PEG (14) DP 322506	UNMK U3 DP 573386	ob138	224°59'30"	A DP 322506	0°00'00"	8.38 C		Class B
UNMK U3 DP 573386	PEG XVIII DP 322506	ob139	224°59'30"	A DP 322506	0°00'00"	21.33 C		Class B
PEG XVIII DP 322506	PEG (13) DP 322506	ob141	224°59'30"	A DP 322506	0°00'00"	24.20 A	DP 322506	Class B
PEG (13) DP 322506	PEG (12) DP 322506	ob142	185°55'00"	A DP 322506	0°00'00"	18.36 A	DP 322506	Class B
PEG (12) DP 322506	IS XXII DP 322506	ob143	287°50'00"	A DP 322506	0°00'00"	24.79 A	DP 322506	
PEG P1 DP 573386	POST P2 DP 573386	ob82	155°56'00"	C		21.10 C		Class B
POST P2 DP 573386	POST P3 DP 573386	ob146	186°53'00"	C		12.95 C		Class B
POST P3 DP 573386	POST P4 DP 573386	ob147	187°25'00"	C		29.97 C		Class B
POST P4 DP 573386	POST P5 DP 573386	ob148	264°26'00"	C		4.72 C		Class B
POST P5 DP 573386	POST P28 DP 573386	ob149	212°40'00"	C		93.59 C		Class B
POST P28 DP 573386	POST P6 DP 573386	ob150	208°26'00"	C		45.54 C		Class B
POST P6 DP 573386	POST P7 DP 573386	ob151	193°53'00"	C		76.77 C		Class B
POST P7 DP 573386	POST P8 DP 573386	ob152	208°05'00"	C		37.81 C		Class B
POST P8 DP 573386	POST P9 DP 573386	ob153	221°36'00"	C		17.19 C		Class B

# Mark and Vector

Survey Number DP 573386

Meridional Circuit Mount Eden 2000

From	To	Code	Bearing	Adpt Surv	Bearing Correction	Distance	Adpt Surv	Class
IB 1 DP 391076	POST P2 DP 573386	ob5	58°06'30"	M		49.24 M		
IB 1 DP 391076	POST P3 DP 573386	ob6	71°54'00"	M		42.35 M		
PEG 1 DP 391076	POST P17 DP 573386	ob85	260°04'00"	C		75.29 C		Class B
POST P17 DP 573386	POST P18 DP 573386	ob145	272°48'00"	C		67.56 C		Class B
POST P18 DP 573386	POST P19 DP 573386	ob154	241°41'00"	C		4.61 C		Class B
POST P19 DP 573386	POST P20 DP 573386	ob155	221°21'00"	C		84.04 C		Class B
POST P20 DP 573386	PEG P21 DP 573386	ob156	208°25'00"	C		24.73 C		Class B
PEG (3) DP 322506	PEG (2) DP 322506	ob137	217°07'00"	A	DP 322506	0°00'00"	10.06 A DP 322506	Class B
PEG (2) DP 322506	PEG (1) DP 322506	ob159	207°52'00"	A	DP 322506	0°00'00"	5.11 A DP 322506	Class B
PEG (1) DP 322506	IT IV DP 50149	ob160	260°18'00"	A	DP 322506	0°00'00"	6.77 A DP 322506	
PEG (1) DP 322506	UNMK (3) DP 322506	ob161	207°52'00"	A	DP 322506	0°00'00"	2.80 A DP 322506	Class BD
UNMK (3) DP 322506	IT IV DP 50149	ob162	284°00'00"	C		5.53 C		
IB 2 DP 573386	POST P14 DP 573386	ob62	324°31'30"	M		54.56 M		
POST P14 DP 573386	POST P15 DP 573386	ob163	82°57'00"	C		19.18 C		Class B
POST P15 DP 573386	POST P13 DP 573386	ob165	94°14'00"	C		52.42 C		Class B
POST P13 DP 573386	POST P12 DP 573386	ob166	56°41'00"	C		50.19 C		Class B
POST P12 DP 573386	POST P11 DP 573386	ob167	11°15'00"	C		9.25 C		Class B
POST P11 DP 573386	PEG P10 DP 573386	ob168	48°48'00"	C		17.29 C		Class B
IB 2 DP 573386	POST P15 DP 573386	ob63	344°53'30"	M		48.46 M		
IS XXIII DP 322506	DISK D2 DP 573386	ob28	12°05'00"	M		25.45 M		
DISK D2 DP 573386	UNMK U35 DP 573386	ob239	126°14'00"	C		1.03 C		
UNMK U35 DP 573386	POST P14 DP 573386	ob241	126°14'00"	C		61.74 C		Class BD
PEG (11) DP 322506	POST P22 DP 573386	ob126	244°52'00"	C		24.95 C		Class B
POST P22 DP 573386	POST P23 DP 573386	ob169	259°14'00"	C		10.23 C		Class B

# Mark and Vector

Survey Number DP 573386

Meridional Circuit Mount Eden 2000

From	To	Code	Bearing	Adpt Surv	Bearing Correction	Distance	Adpt Surv	Class	
POST P23 DP 573386	POST P24 DP 573386	ob170	290°22'00"	C		47.17 C		Class B	
POST P24 DP 573386	POST P25 DP 573386	ob171	195°17'00"	C		4.59 C		Class B	
POST P25 DP 573386	POST P26 DP 573386	ob172	187°50'00"	C		10.67 C		Class B	
POST P26 DP 573386	IT II DP 48582	ob173	90°00'30"	M		108.23 M			
IT II DP 48582	POST P25 DP 573386	ob37	275°39'50"	M		107.30 M			
IT II DP 48582	POST P24 DP 573386	ob38	278°05'40"	M		106.63 M			
IT II DP 48582	POST P23 DP 573386	ob39	268°41'20"	M		61.36 M			
IT II DP 48582	POST P22 DP 573386	ob40	270°34'00"	M		51.30 M			
POST P26 DP 573386	UNMK U36 DP 573386	ob174	184°20'00"	C		80.72 C		Class BD	
UNMK U36 DP 573386	DISK D1 DP 573386	ob242	184°20'00"	C		4.46 C			
DISK D1 DP 573386	IB 4 DP 573386	ob176	39°44'20"	M		92.01 M			
PEG (12) DP 322506	UNMK (2) DP 322506	ob144	185°55'00"	A	DP 322506	0°00'00"	7.00 A	DP 322506	Class BD
UNMK (2) DP 322506	IS XXII DP 322506	ob177	302°28'00"	C		27.12 C			
UNMK U3 DP 573386	UNMK U4 DP 573386	ob140	147°22'00"	C		29.18 C		Class B	
UNMK U4 DP 573386	POST P26 DP 573386	ob158	98°34'00"	C		16.95 C		Class B	
POST P26 DP 573386	UNMK U5 DP 573386	ob175	119°46'00"	C		25.84 C		Class B	
UNMK U5 DP 573386	UNMK U6 DP 573386	ob178	153°25'00"	C		22.12 C		Class B	
UNMK U6 DP 573386	UNMK U7 DP 573386	ob179	128°27'00"	C		12.13 C		Class B	
UNMK U7 DP 573386	UNMK U8 DP 573386	ob180	100°38'00"	C		14.47 C		Class B	
UNMK U8 DP 573386	UNMK U9 DP 573386	ob181	27°47'00"	C		10.93 C		Class B	
UNMK U9 DP 573386	UNMK U10 DP 573386	ob182	117°30'00"	C		15.51 C		Class B	
UNMK U10 DP 573386	UNMK U11 DP 573386	ob183	98°36'00"	C		18.09 C		Class B	
UNMK U11 DP 573386	UNMK U12 DP 573386	ob184	146°14'00"	C		6.66 C		Class B	
UNMK U12 DP 573386	UNMK U13 DP 573386	ob185	168°33'00"	C		28.12 C		Class B	



# Mark and Vector

Survey Number DP 573386

Meridional Circuit Mount Eden 2000

From	To	Code	Bearing	Adpt Surv	Bearing Correction	Distance	Adpt Surv	Class
UNMK U13 DP 573386	UNMK U14 DP 573386	ob186	194°58'00"	C		21.16 C		Class B
UNMK U14 DP 573386	UNMK U15 DP 573386	ob187	222°11'00"	C		8.27 C		Class B
UNMK U15 DP 573386	UNMK U16 DP 573386	ob188	147°00'00"	C		4.40 C		Class B
UNMK U16 DP 573386	UNMK U17 DP 573386	ob189	171°18'00"	C		17.15 C		Class B
UNMK U17 DP 573386	UNMK U18 DP 573386	ob190	92°52'00"	C		56.08 C		Class B
UNMK U18 DP 573386	UNMK U19 DP 573386	ob191	23°10'00"	C		12.70 C		Class B
PEG 2 DP 391076	PEG 17 DP 391076	ob80	152°25'00"	A DP 391076	0°00'00"	40.55 A DP 391076		Class B
PEG 17 DP 391076	PEG 18 DP 391076	ob192	177°48'00"	A DP 391076	0°00'00"	18.47 A DP 391076		Class B
PEG 18 DP 391076	PEG 5 DP 391076	ob193	211°22'00"	A DP 391076	0°00'00"	28.56 A DP 391076		Class B
PEG 5 DP 391076	PEG 6 DP 391076	ob194	188°48'00"	A DP 391076	0°00'00"	24.20 A DP 391076		Class B
PEG 6 DP 391076	PEG 7 DP 391076	ob195	165°05'00"	A DP 391076	0°00'00"	23.26 A DP 391076		Class B
PEG 7 DP 391076	PEG 8 DP 391076	ob196	208°28'00"	A DP 391076	0°00'00"	33.88 A DP 391076		Class B
PEG 8 DP 391076	PEG 9 DP 391076	ob197	183°46'00"	A DP 391076	0°00'00"	26.37 A DP 391076		Class B
PEG 9 DP 391076	PEG 10 DP 391076	ob198	196°45'00"	A DP 391076	0°00'00"	11.31 A DP 391076		Class B
PEG 10 DP 391076	PEG 11 DP 391076	ob199	226°50'00"	A DP 391076	0°00'00"	23.66 A DP 391076		Class B
PEG 11 DP 391076	PEG 12 DP 391076	ob200	193°24'30"	A DP 391076	0°00'00"	77.29 A DP 391076		Class B
PEG 12 DP 391076	PEG 13 DP 391076	ob201	151°03'00"	A DP 391076	0°00'00"	88.71 A DP 391076		Class B
PEG 12 DP 391076	PEG 1 DP 410481	ob202	151°06'30"	A DP 410481	0°00'00"	77.69 A DP 410481		Class B
PEG 1 DP 410481	PEG 2 DP 410481	ob203	219°01'00"	A DP 410481	0°00'00"	10.75 A DP 410481		Class B
PEG 2 DP 410481	PEG 3 DP 410481	ob204	246°39'00"	A DP 410481	0°00'00"	79.11 A DP 410481		Class B
PEG 3 DP 410481	PEG 4 DP 410481	ob205	228°29'00"	A DP 410481	0°00'00"	26.00 A DP 410481		Class B
PEG 4 DP 391076	PEG 19 DP 391076	ob87	177°53'00"	A DP 391076	0°00'00"	25.53 A DP 391076		Class B
PEG 19 DP 391076	PEG 20 DP 391076	ob206	189°49'00"	A DP 391076	0°00'00"	70.37 A DP 391076		Class B
PEG 20 DP 391076	PEG 21 DP 391076	ob207	198°22'30"	A DP 391076	0°00'00"	74.59 A DP 391076		Class B

# Mark and Vector

Survey Number DP 573386

Meridional Circuit Mount Eden 2000

From	To	Code	Bearing	Adpt Surv	Bearing Correction	Distance	Adpt Surv	Class
UNMK 1 DP 410481	UNMK 2 DP 410481	ob119	210°28'00"	A DP 410481	0°00'00"	3.46 A	DP 410481	Class B
UNMK 2 DP 410481	UNMK 3 DP 410481	ob208	188°17'00"	A DP 410481	0°00'00"	14.12 A	DP 410481	Class B
UNMK 3 DP 410481	UNMK 4 DP 410481	ob209	196°48'00"	A DP 410481	0°00'00"	15.68 A	DP 410481	Class B
UNMK 4 DP 410481	UNMK 5 DP 410481	ob210	229°51'00"	A DP 410481	0°00'00"	23.46 A	DP 410481	Class B
UNMK 5 DP 410481	UNMK 6 DP 410481	ob211	223°12'00"	A DP 410481	0°00'00"	17.13 A	DP 410481	Class B
UNMK 6 DP 410481	UNMK 7 DP 410481	ob212	216°35'00"	A DP 410481	0°00'00"	41.08 A	DP 410481	Class B
UNMK 7 DP 410481	PEG (3) DP 322506	ob213	202°28'00"	A DP 410481	0°00'00"	20.39 A	DP 410481	Class B
PEG 5 DP 410481	PEG 6 DP 410481	ob121	210°28'00"	A DP 410481	0°00'00"	7.81 A	DP 410481	Class B
PEG 6 DP 410481	PEG 7 DP 410481	ob214	188°17'00"	A DP 410481	0°00'00"	14.85 A	DP 410481	Class B
PEG 7 DP 410481	PEG 8 DP 410481	ob215	196°48'00"	A DP 410481	0°00'00"	13.45 A	DP 410481	Class B
PEG 8 DP 410481	PEG 9 DP 410481	ob216	229°51'00"	A DP 410481	0°00'00"	22.03 A	DP 410481	Class B
PEG 9 DP 410481	PEG 10 DP 410481	ob217	223°12'00"	A DP 410481	0°00'00"	17.82 A	DP 410481	Class B
PEG 10 DP 410481	PEG 11 DP 410481	ob218	216°35'00"	A DP 410481	0°00'00"	41.91 A	DP 410481	Class B
PEG 11 DP 410481	UNMK U31 DP 573386	ob219	207°17'00"	A DP 410481	0°00'00"	30.17 C		Class B
UNMK U31 DP 573386	UNMK 8 DP 410481	ob220	207°17'00"	A DP 410481	0°00'00"	8.00 C		Class BD
UNMK 8 DP 410481	IT IV DP 50149	ob221	190°20'00"	A DP 410481	0°00'00"	1.81 A	DP 410481	
POST P14 DP 573386	UNMK U20 DP 573386	ob164	179°41'00"	C		26.09 C		Class B
UNMK U20 DP 573386	UNMK U21 DP 573386	ob223	188°59'00"	C		51.39 C		Class B
UNMK U21 DP 573386	UNMK U22 DP 573386	ob224	158°45'00"	C		11.74 C		Class B
UNMK U22 DP 573386	UNMK U23 DP 573386	ob225	174°35'00"	C		16.29 C		Class B
UNMK U23 DP 573386	UNMK U24 DP 573386	ob226	127°48'00"	C		14.64 C		Class B
UNMK U24 DP 573386	UNMK U25 DP 573386	ob227	143°41'00"	C		14.08 C		Class B
UNMK U25 DP 573386	UNMK U26 DP 573386	ob228	133°38'00"	C		12.88 C		Class B
UNMK U26 DP 573386	UNMK U27 DP 573386	ob229	103°05'00"	C		5.63 C		Class B

# Mark and Vector

Survey Number DP 573386

Meridional Circuit Mount Eden 2000

From	To	Code	Bearing	Adpt Surv	Bearing Correction	Distance	Adpt Surv	Class
UNMK U27 DP 573386	UNMK U28 DP 573386	ob230	146°57'00"	C		18.49 C		Class B
UNMK U28 DP 573386	UNMK U29 DP 573386	ob231	43°30'00"	C		12.97 C		Class B
UNMK U29 DP 573386	UNMK U30 DP 573386	ob232	74°48'00"	C		27.02 C		Class B
UNMK U30 DP 573386	UNMK U31 DP 573386	ob233	123°35'00"	C		17.03 C		Class B
UNMK U1 DP 573386	UNMK U2 DP 573386	ob110	229°21'00"	C		138.79 C		Class B
UNMK U2 DP 573386	PEG P29 DP 573386	ob157	214°06'00"	C		73.79 C		Class B
PEG P30 DP 573386	UNMK U38 DP 573386	ob99	328°18'30"	A	DP 48582	0°02'00"	16.02 C	Class BD
UNMK U38 DP 573386	IT 8 DP 573386	ob234	25°56'00"	C		68.95 C		
IT 8 DP 573386	UNMK U39 DP 573386	ob16	187°36'00"	C		46.55 C		
UNMK U39 DP 573386	IT VI DP 91523	ob235	46°37'50"	C		256.02 C		
IT 8 DP 573386	UNMK U40 DP 573386	ob17	122°18'00"	C		31.49 C		
UNMK U40 DP 573386	IT VI DP 91523	ob236	46°18'30"	C		212.07 C		
IT 8 DP 573386	UNMK U42 DP 573386	ob18	82°20'30"	C		138.89 C		
UNMK U42 DP 573386	PEG (2) DP 91523	ob237	134°32'00"	C		22.21 C		Class BD
IT 8 DP 573386	UNMK U41 DP 573386	ob19	121°06'00"	C		52.26 C		
UNMK U41 DP 573386	IT VI DP 91523	ob238	40°48'00"	C		206.94 C		
IB IX DP 322506	POST P13 DP 573386	ob48	274°20'50"	M		89.68 M		
IB IX DP 322506	POST P12 DP 573386	ob49	305°53'40"	M		58.62 M		
IB IX DP 322506	POST P11 DP 573386	ob50	313°33'30"	M		63.04 M		
IB IX DP 322506	POST P8 DP 573386	ob51	356°57'00"	M		78.42 M		
IB IX DP 322506	POST P7 DP 573386	ob52	6°57'30"	M		112.50 M		
IB 1 DP 391076	POST P6 DP 573386	ob7	196°36'20"	M		141.75 M		
IB 1 DP 391076	POST P28 DP 573386	ob8	191°07'00"	M		97.63 M		
IB 1 DP 391076	POST P5 DP 573386	ob9	118°14'00"	M		35.97 M		

# Mark and Vector

Survey Number DP 573386

Meridional Circuit Mount Eden 2000

From	To	Code	Bearing	Adpt Surv	Bearing Correction	Distance	Adpt Surv	Class
IB 1 DP 391076	POST P4 DP 573386	ob10	114°28'00"	M		39.98 M		
IB 1 DP 391076	POST P17 DP 573386	ob11	275°28'00"	M		59.85 M		
IB 1 DP 391076	POST P18 DP 573386	ob12	274°03'10"	M		127.38 M		
IB 1 DP 391076	POST P19 DP 573386	ob13	272°58'30"	M		131.30 M		
IT II DP 48582	POST P20 DP 573386	ob41	357°37'00"	M		46.95 M		
SS NAIL XXIV DP 322506	UNMK U33 DP 573386	ob65	2°11'00"	C		69.27 C		
UNMK U33 DP 573386	IS XXIII DP 322506	ob240	337°21'00"	C		75.95 C		
IS XXIII DP 322506	UNMK U34 DP 573386	ob29	148°14'00"	C		45.86 C		
UNMK U34 DP 573386	SS NAIL XXIV DP 322506	ob222	178°35'30"	C		100.35 C		
SS NAIL XXIV DP 322506	UNMK (38) DP 322506	ob66	1°36'00"	M		90.27 M		
UNMK (38) DP 322506	IS XXIII DP 322506	ob243	329°18'00"	C		57.08 C		
SS NAIL XXIV DP 322506	UNMK U43 DP 573386	ob67	5°15'00"	C		92.27 C		
UNMK U43 DP 573386	IS XXIII DP 322506	ob244	323°32'00"	C		58.98 C		
IB 4 DP 573386	UNMK (46) DP 322506	ob55	196°24'30"	C		130.16 C		
IB 2 DP 573386	UNMK (47) DP 322506	ob60	262°43'30"	C		57.62 C		
IS XXIII DP 322506	UNMK U50 DP 322506	ob20	358°12'00"	C		2.00 C		
IS XXIII DP 322506	UNMK U51 DP 322506	ob21	358°12'00"	C		5.09 C		
IS XXIII DP 322506	UNMK U52 DP 322506	ob22	358°12'00"	C		27.82 C		
IS XXIII DP 322506	UNMK U53 DP 322506	ob23	15°59'00"	C		44.34 C		
IS XXIII DP 322506	UNMK U54 DP 322506	ob24	243°12'00"	C		2.48 C		
IS XXIII DP 322506	UNMK U35 DP 573386	ob25	14°15'00"	C		25.04 C		
IT II DP 48582	IB (8) DP 322506	ob31	285°30'30"	A DP 322506	0°00'00"	151.01 A DP 322506		
IB (8) DP 322506	PEG II SO 1560	ob245	12°18'30"	A DP 48582	0°02'00"	120.90 A DP 48582		
PEG II SO 1560	UNMK U60 DP 573386	ob246	148°18'30"	A DP 48582	0°02'00"	17.57 C		

# Mark and Vector

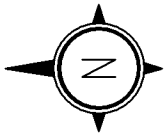
Survey Number DP 573386

Meridional Circuit Mount Eden 2000

From	To	Code	Bearing	Adpt Surv	Bearing Correction	Distance	Adpt Surv	Class
UNMK U60 DP 573386	UNMK U61 DP 573386	ob247	148°18'30"	A DP 48582	0°02'00"	134.46 C		
UNMK U61 DP 573386	PEG (11) DP 322506	ob249	148°18'30"	A DP 48582	0°02'00"	21.18 A DP 48582		
UNMK U60 DP 573386	PEG P30 DP 573386	ob248	58°18'30"	C		20.16 C		

Mark Name	Mark Condition	Description
DISK D1 DP 573386		Disk in drilled in rock
DISK D2 DP 573386		Disk drilled in rock
IB 1 DP 391076		0.20m down. In grass paddock
IB 2 DP 573386		0.30m down. In grass paddock
IB 4 DP 573386		0.20m down. In grass paddock
IT 8 DP 573386		Tube concreted in rock headland
PEG P29 DP 573386		PEG VIIA DP 48582 Reinst

\*\*\* End of Report \*\*\*



Lot 1  
DP 91523  
RT NA48A/271

TITLE: 163.70  
PLAN: 163.91m

NATURAL BOUNDARY FIXED TO TREES

HIHI BEACH

LOT 5

RT NA134D/247 LTD

RT 365563

LOT 1

TITLE: NO DISTANCE  
PLAN: 150.46m

UNFORMED ROAD

Allotment 79  
PSH OF Mangonui East

DP 573386  
PLAN GRAPHIC FOR REMOVAL OF  
LIMITATIONS

DATE: OCTOBER 2023 SCALE: NOT TO SCALE

SHEET 01 OF 01

# Schedule / Memorandum

**Land Registration District**

**North Auckland**

**Plan Number**

**DP 573386**

**Territorial Authority (the Council)**

**Far North District Council**

**Council Reference**

**2160461-RMA**

**Cancellation of Amalgamation Condition**

Pursuant to s241(3) Resource Management Act 1991

The Far North District Council hereby cancels the amalgamation condition requiring that Lots 1 & 2 DP 391076 (RT 365563) be held in the same record of title.

**Schedule of Existing Easements to be Surrendered**

(Non-Conditional)

Purpose	Shown – Created by	Burdened Land (Servient Tenement)	Benefitted Land (Dominant Tenement)
The Right of Way, Right to Transmit Electricity, Telecommunications and Computer Media	'A' DP 391076 & 'A' DP 410481 8145101.4	Lot 2 DP 391076 (RT 365563)	Lot 1 DP 322506 (RT 89829) & Allotment 79 PSH of Mangonui East (RT 134D/248)

**Amalgamation Conditions**

Pursuant to s220 Resource Management Act 1991

That Lots 1 & 2 DP 573386 (RT 1044493) and Lot 1 DP 391076 (Res. RT 365563) be held in the same Record of Title. **LINZ reference 1376234**

That Lots 3 & 4 DP 573386 (RT 1044494) be held in the same record of title. **LINZ reference 1376234**

That Lots 5 & 6 DP 573386 (RT 1044495) and Allotment 79 PSH of Mangonui East (RT NA134D/248) be held in the same record of title. **LINZ reference 1376234**

**Memorandum of Easements**

Pursuant to s243 Resource Management Act 1991

Purpose	Shown	Burdened Land (Servient Tenement)	Benefitted Land (Dominant Tenement)
Right of Way, Right to Convey Electricity & Telecommunications	A & B	Lot 3 DP 573386	Lots 1, 2, 4 – 6 DP 573386 & Allot. 79 PSH of Mangonui East
Right of Way	C	Lot 4 DP 573386	Lots 1 – 3, 5 & 6 DP 573386 & Allot. 79 PSH of Mangonui East

Land Registration District

North Auckland

Plan Number

Change File, Properties, Title  
to your DP number

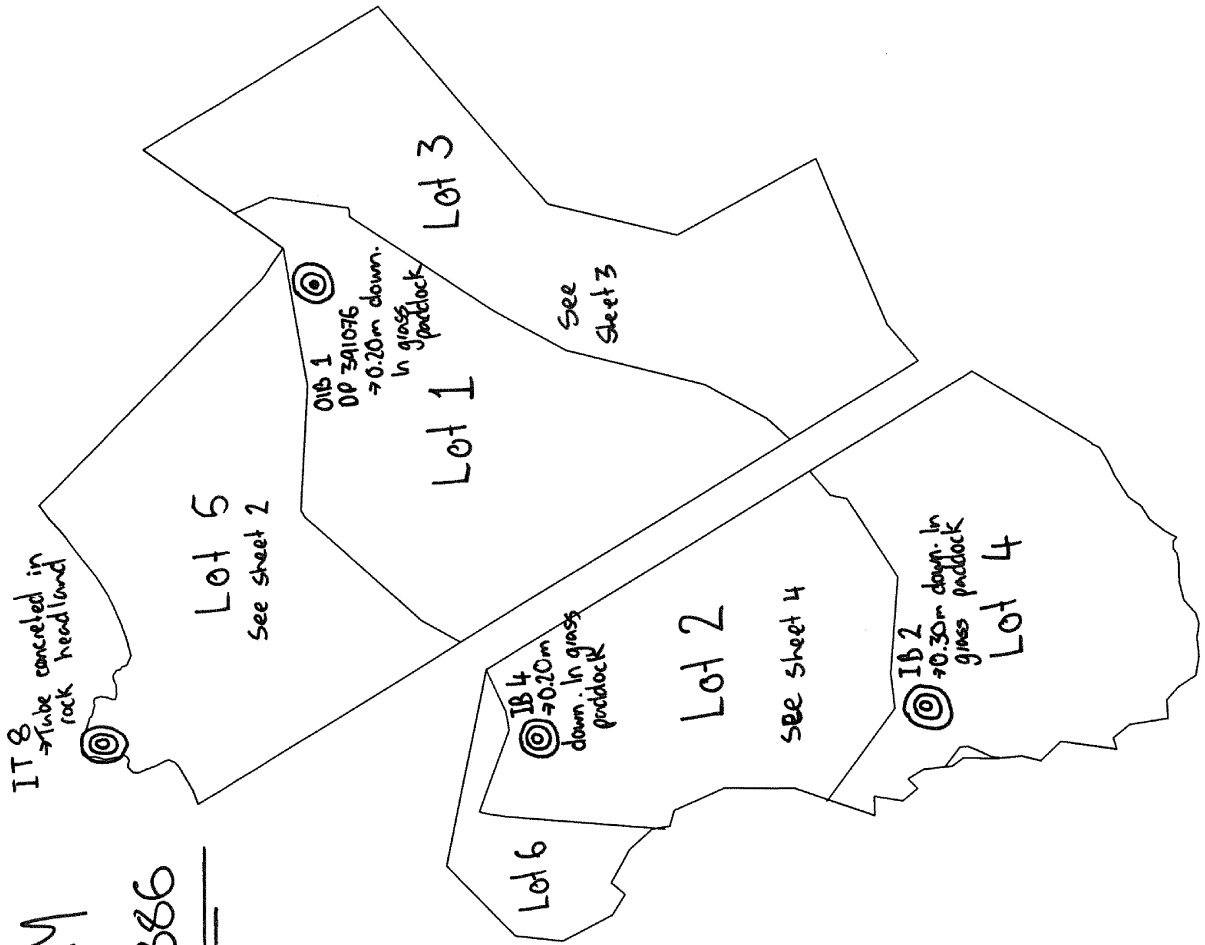
Schedule of Existing Easements			
Purpose	Shown	Burdened Land (Servient Tenement)	Created by
Right of Way, Right to Convey Electricity, Telecommunications & Computer Media	A	Lot 3 DP 573386	7683722.4 & 8837044.2
	B	Lot 3 DP 573386	8837044.2
Right of Way	B	Lot 3 DP 573386	8145101.2
	C	Lot 4 DP 573386	

Proposed Conservation Covenant Schedule Pursuant to s77 Reserves Act 1977		
Shown	Description	Area
D	Lot 4 DP 573386	0.6404 Ha
E	Lot 6 DP 573386	0.4410 Ha
F	Lot 2 DP 573386	2.1644 Ha
G	Lot 5 DP 573386	2.2750 Ha

**Existing Land Covenant:**

The existing Land Covenant described in T 7683722.5 is to remain.





Occupation and PRM  
 diagram for DP573386  
 SHEET 1 OF 4

Diagram not to scale!



Occupation and PRM  
diagram for

DP 573386

SHEET 3 OF 4

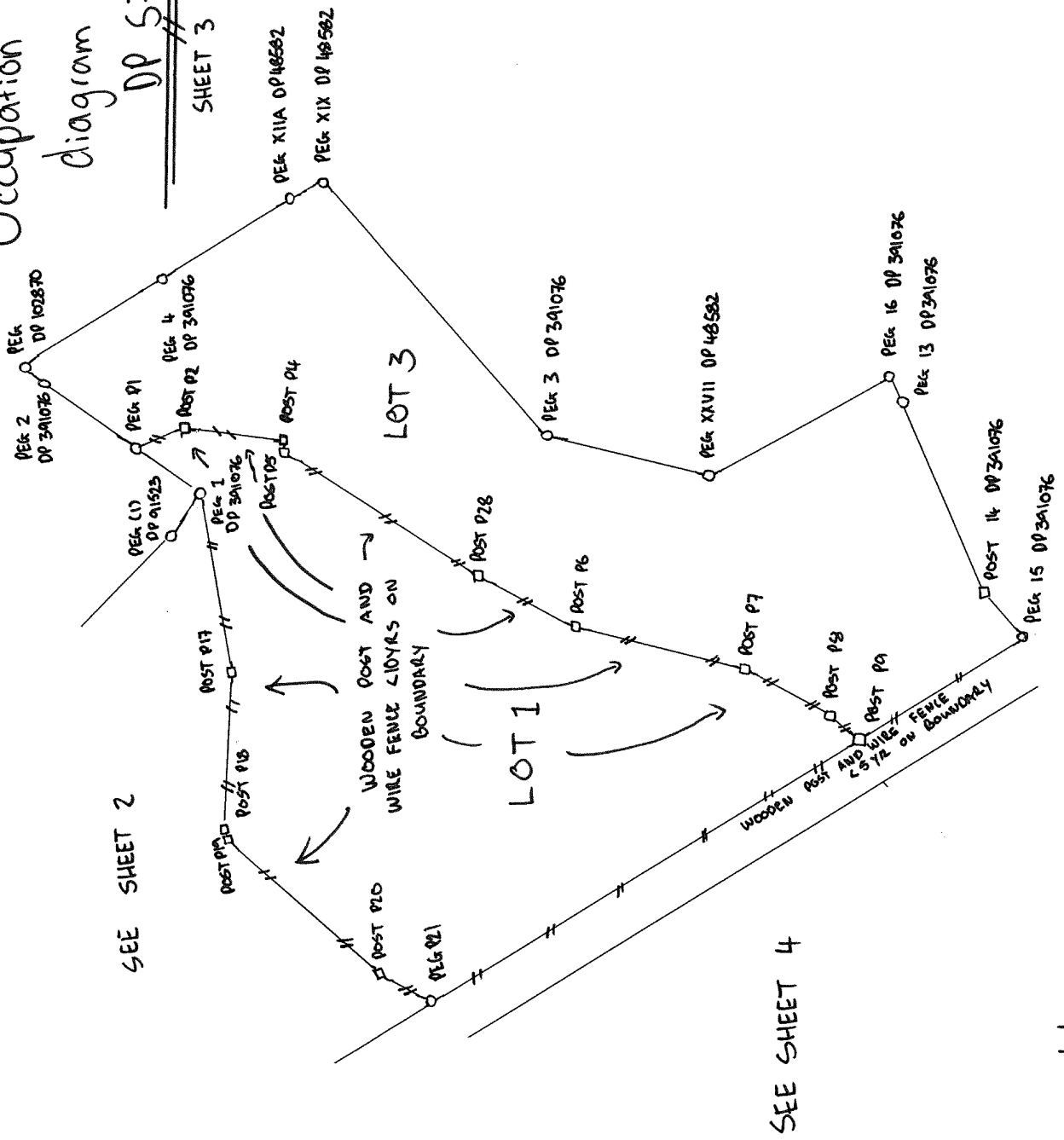
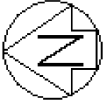


Diagram not to scale!





**Diag. AC**

**Diag. AD**

**Diag. A**

**Diag. AE**

**Diag. AB**

**Diag. AA**

**Diag. AH**

**Diag. AF**

**Diag. AC**

13874 Palmer CB 56

SS NAIL XXIV DP 322506

SS NAIL XXV DP 322506

SS NAIL XXIV DP 322506

RT 89829

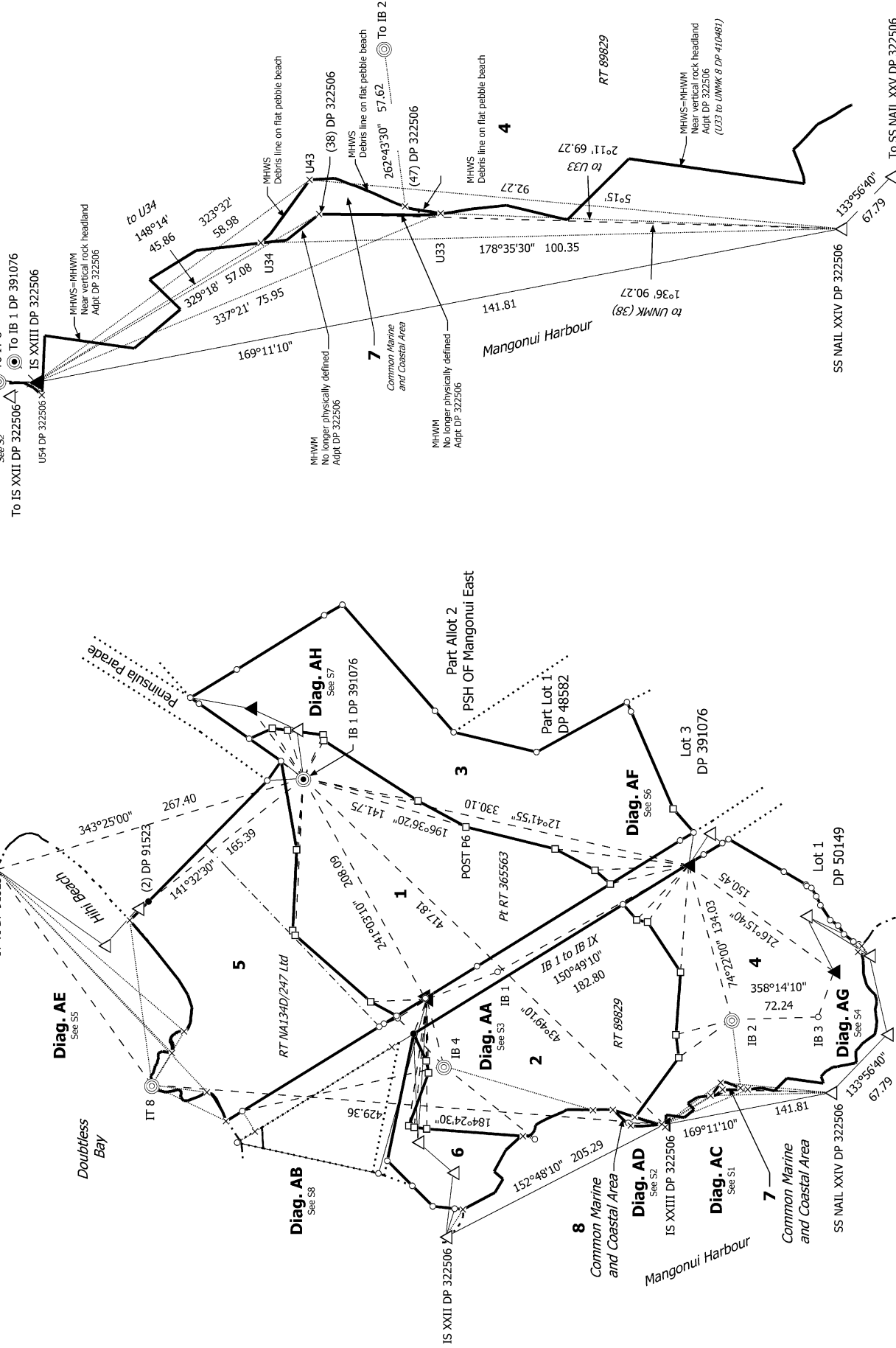
RT 89829

RT 89829

RT 89829

RT 89829

SS NAIL XXV DP 322506



Land District: North Auckland  
 Digitally Generated Plan  
 Generated on: 14/03/2024 3:35pm Page 21 of 33

Lots 1 - 6 being a subdivision of Lot 2 DP 391076, Lot 1 DP 322506 and Lot 1 DP 204980

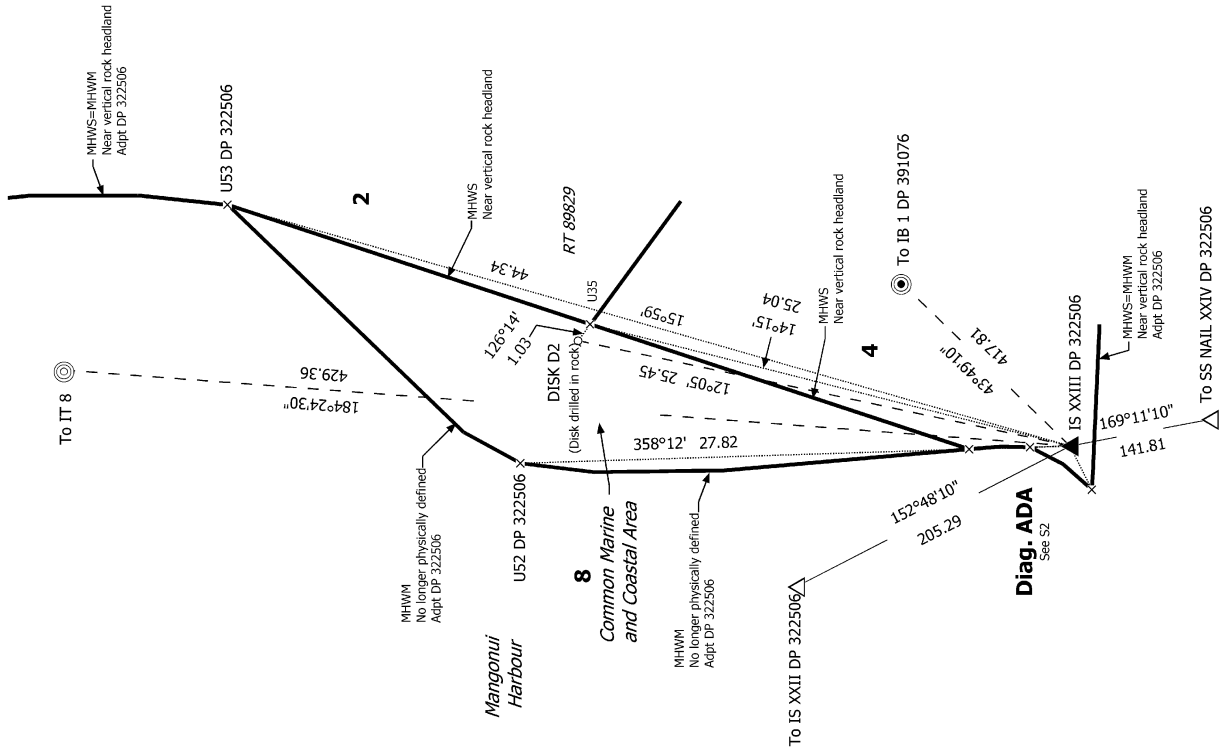
Surveyor: Phillip John Lash  
 Firm: Reyburn & Bryant 1999 Ltd  
 Date of Survey: 22/02/2022

Record of Survey  
 LT 573386  
 Approved on: 14/03/2024

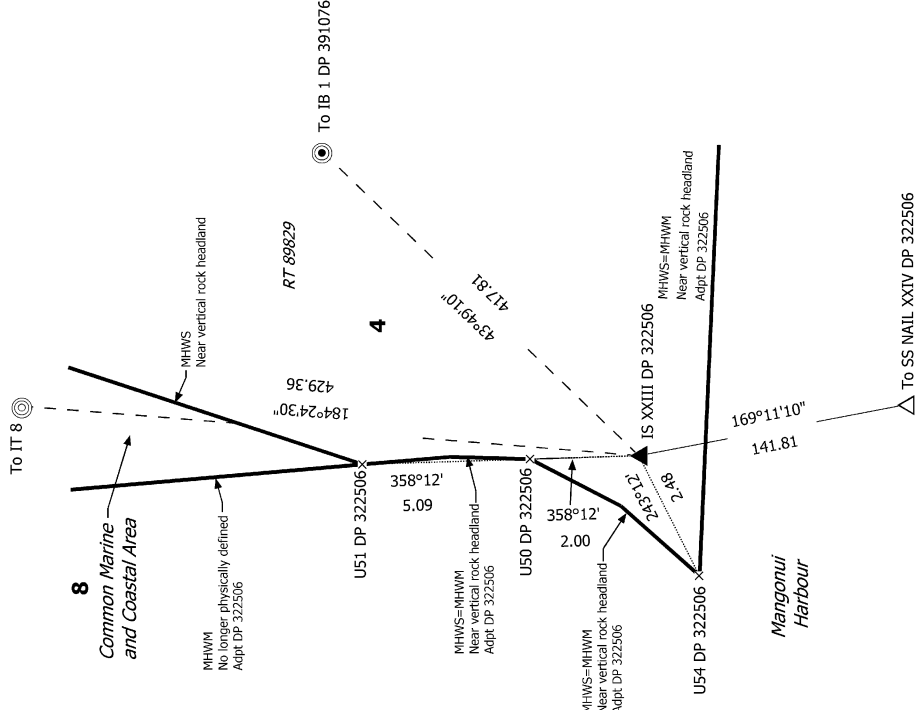
S 1/8



Diag. AD



Diag. ADA



13874 Palmer CB SB

S 2/8

Land District: North Auckland

Digitally Generated Plan

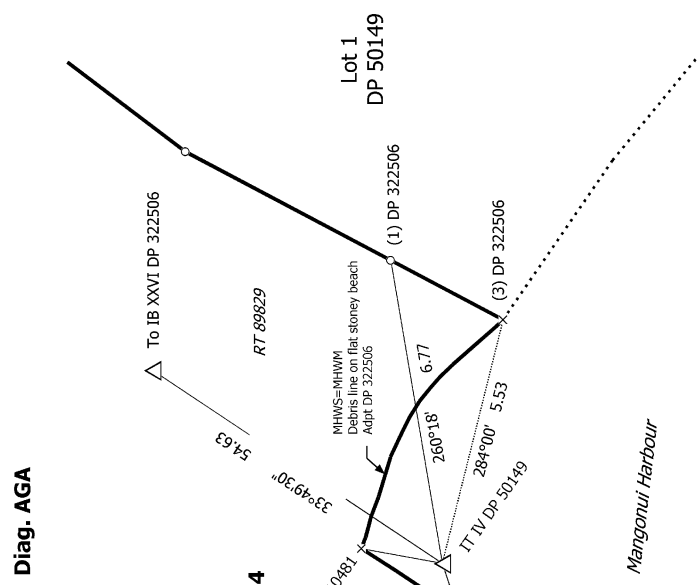
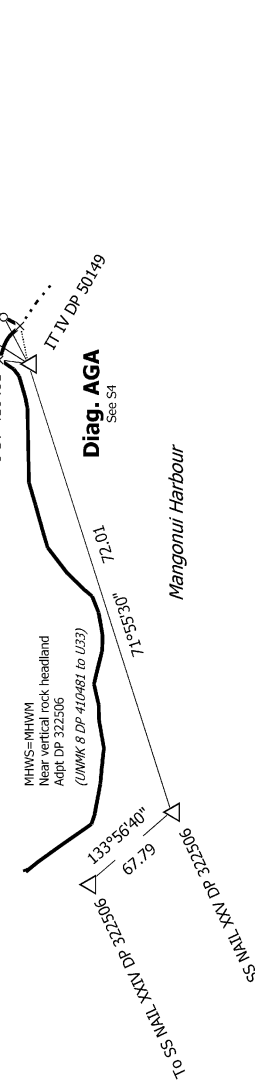
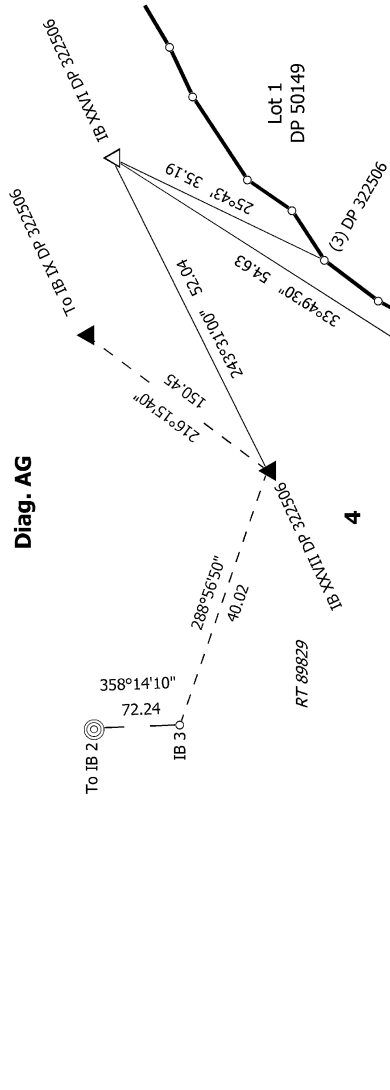
Generated on: 14/03/2024 3:35pm Page 22 of 33

Lots 1 - 6 being a subdivision of Lot 2 DP 391076, Lot 1 DP 322506 and Lot 1 DP 204980

Surveyor: Phillip John Lash  
Firm: Reyburn & Bryant 1999 Ltd  
Date of Survey: 22/02/2022

Record of Survey  
LT 573386  
Approved on: 14/03/2024





13874 Palmer CB SB

Land District: North Auckland

**Digitally Generated Plan**

Generated on: 14/03/2024 3:35pm Page 24 of 33

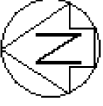
**Lots 1 - 6 being a subdivision of Lot 2 DP 391076, Lot 1 DP 322506 and Lot 1 DP 204980**

Surveyor: Phillip John Lash  
 Firm: Reyburn & Bryant 1999 Ltd  
 Date of Survey: 22/02/2022

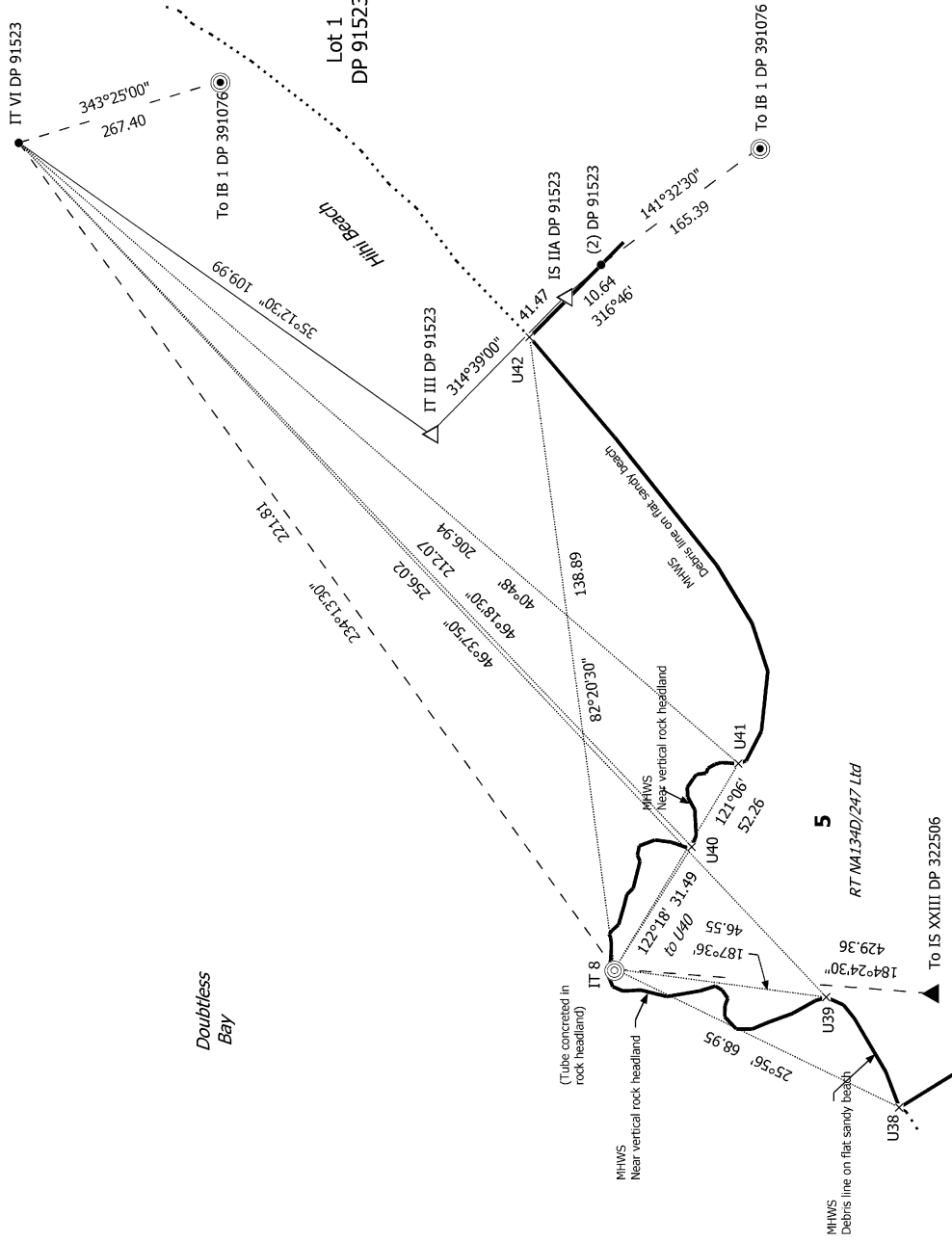
S 4/8

Record of Survey  
 LT 573386  
 Approved on: 14/03/2024





Diag. AE



13874 Palmer CB SB

S 5/8

Land District: North Auckland

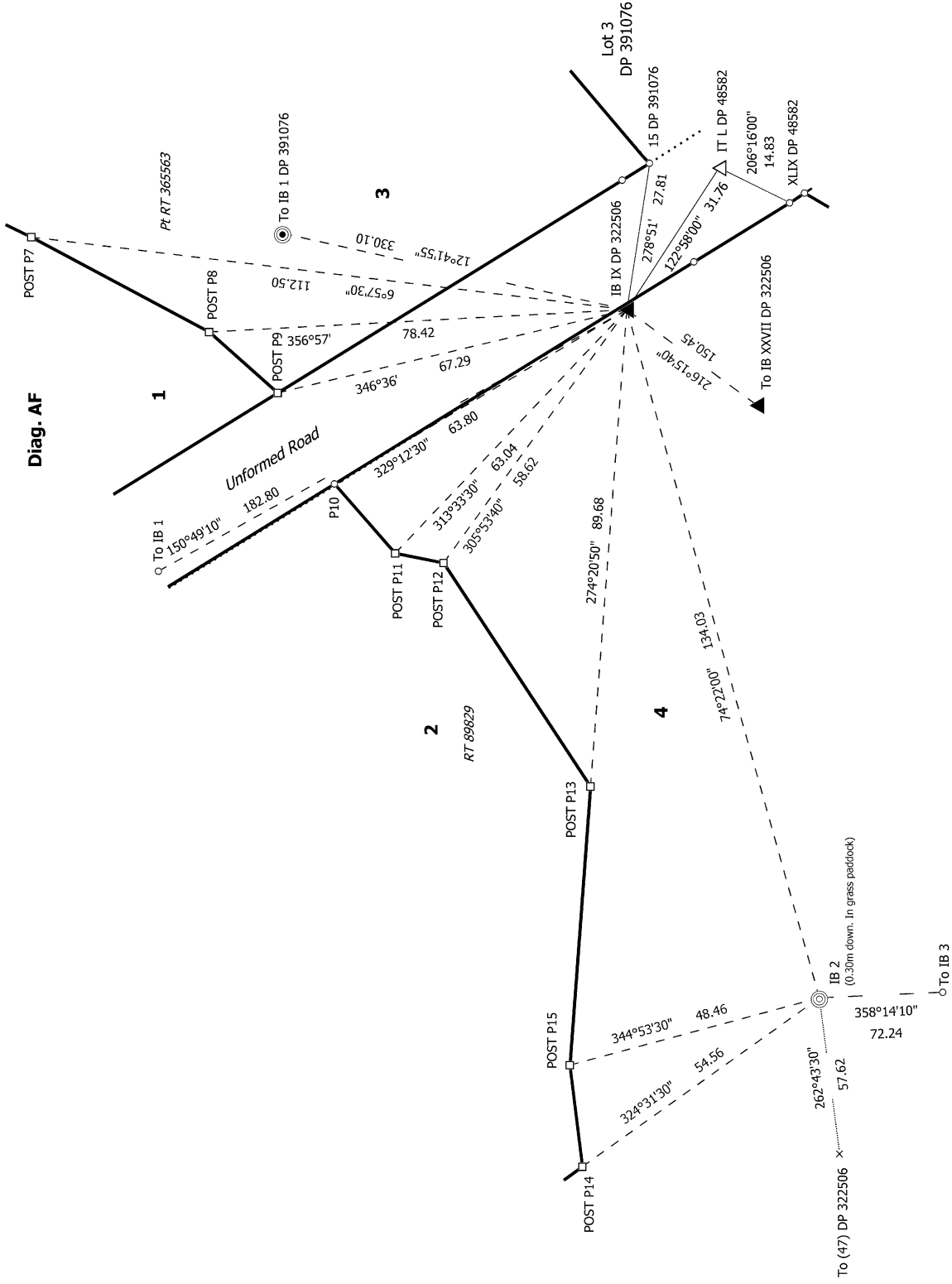
Lots 1 - 6 being a subdivision of Lot 2 DP 391076, Lot 1 DP 322506 and Lot 1 DP 204980

Surveyor: Phillip John Lash  
Firm: Reyburn & Bryant 1999 Ltd  
Date of Survey: 22/02/2022

Record of Survey  
LT 573386  
Approved on: 14/03/2024



Diag. AF



1.3874 Palmer CB SB

Land District: North Auckland

Digitally Generated Plan

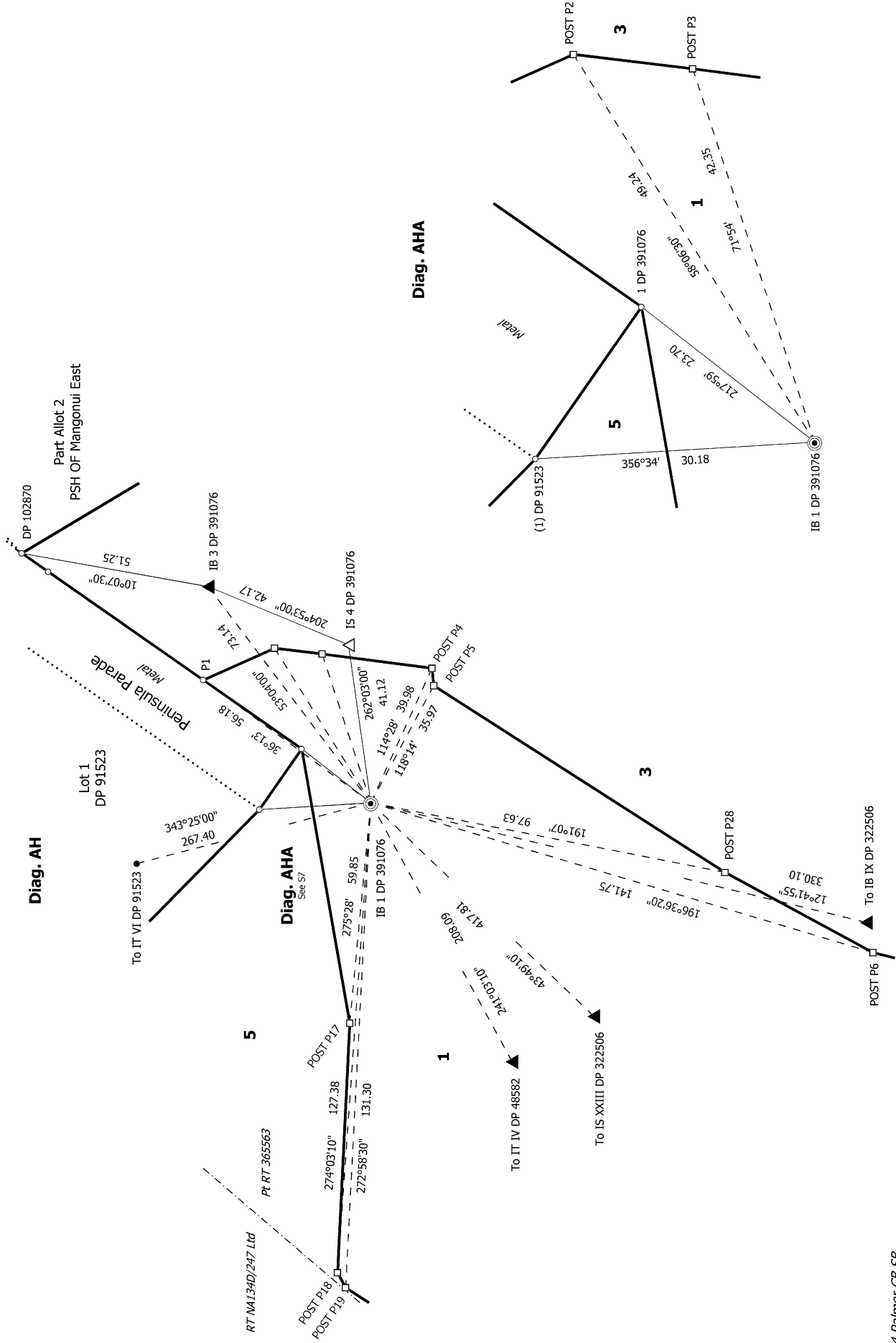
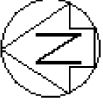
Generated on: 14/03/2024 3:35pm Page 26 of 33

Lots 1 - 6 being a subdivision of Lot 2 DP 391076, Lot 1 DP 322506 and Lot 1 DP 204980

Surveyor: Phillip John Lash  
Firm: Reyburn & Bryant 1999 Ltd  
Date of Survey: 22/02/2022

Record of Survey  
LT 573386  
Approved on: 14/03/2024

S 6/8



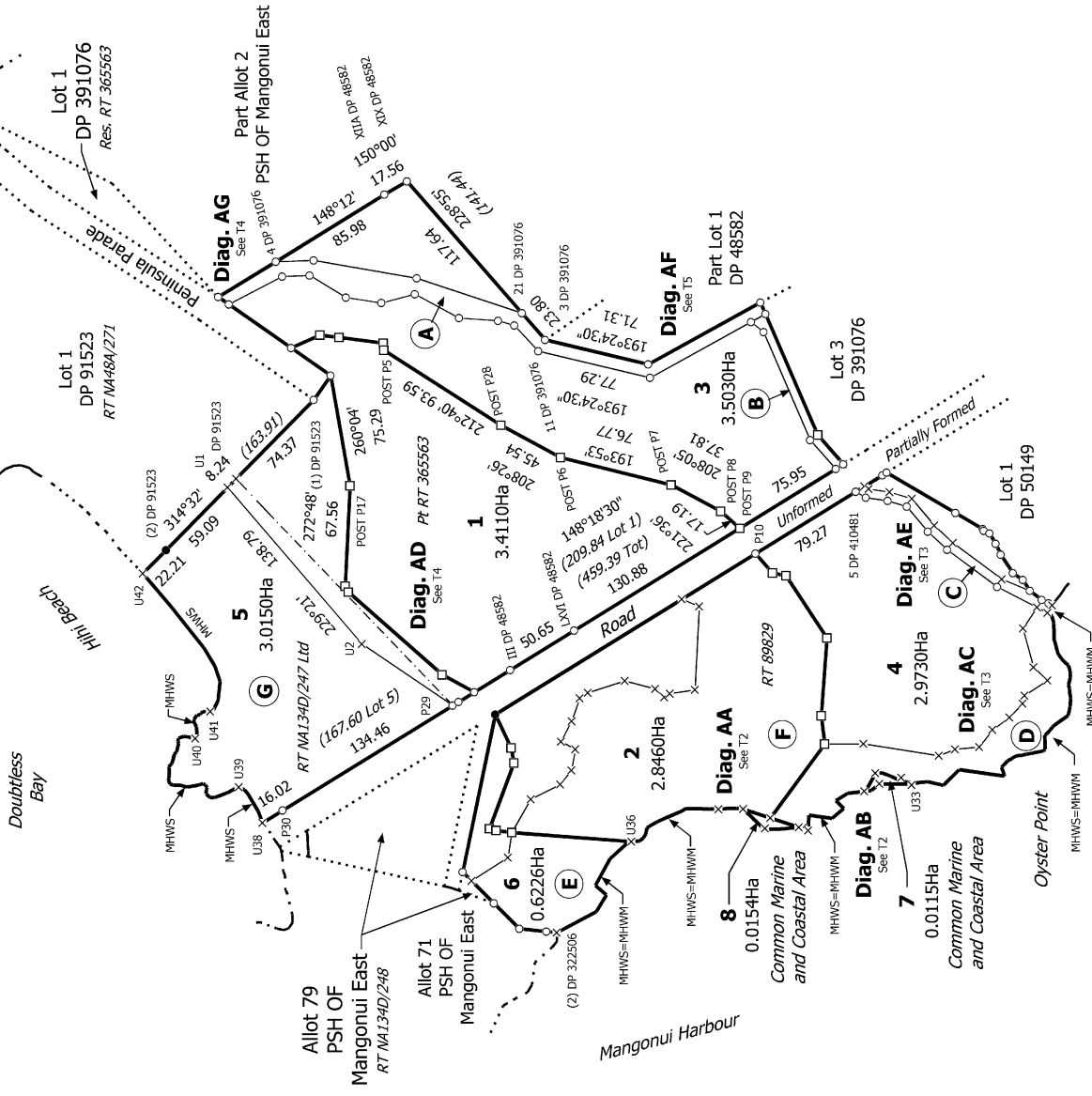
13874 Palmer CB 5B

S 7/8





Diag. A



13874 Palmer CB SB

Land District: North Auckland

Digitally Generated Plan

Generated on: 14/03/2024 3:35pm Page 29 of 33

Lots 1 - 6 being a subdivision of Lot 2 DP 391076, Lot 1 DP 322506 and Lot 1 DP 204980

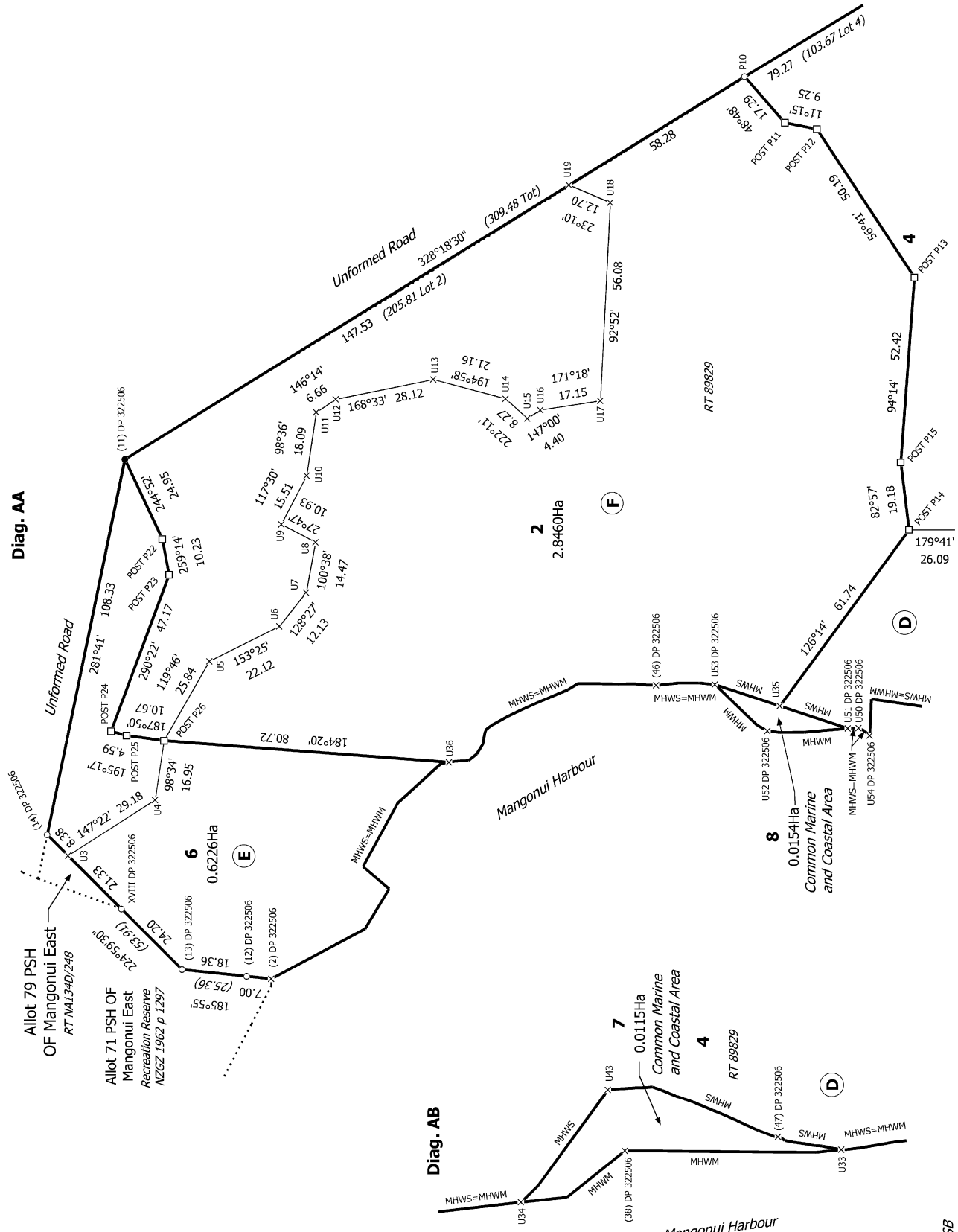
Surveyor: Phillip John Lash  
Firm: Reyburn & Bryant 1999 Ltd  
Date of Survey: 22/02/2022

Record of Survey  
LT 573386  
Approved on: 14/03/2024

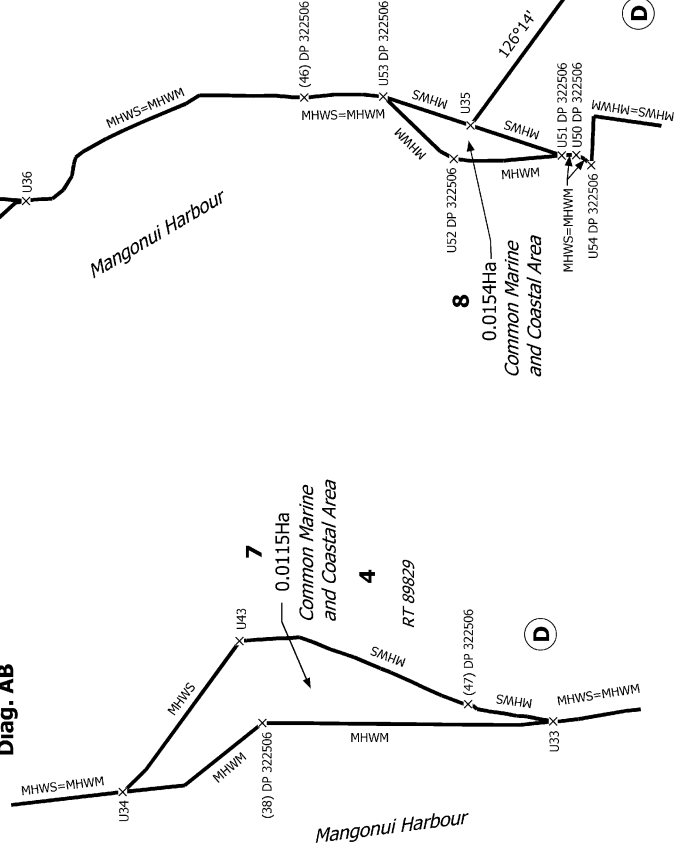
T 1/5



Diag. AA



Diag. AB



13874 Palmer CB SB

T 2/5

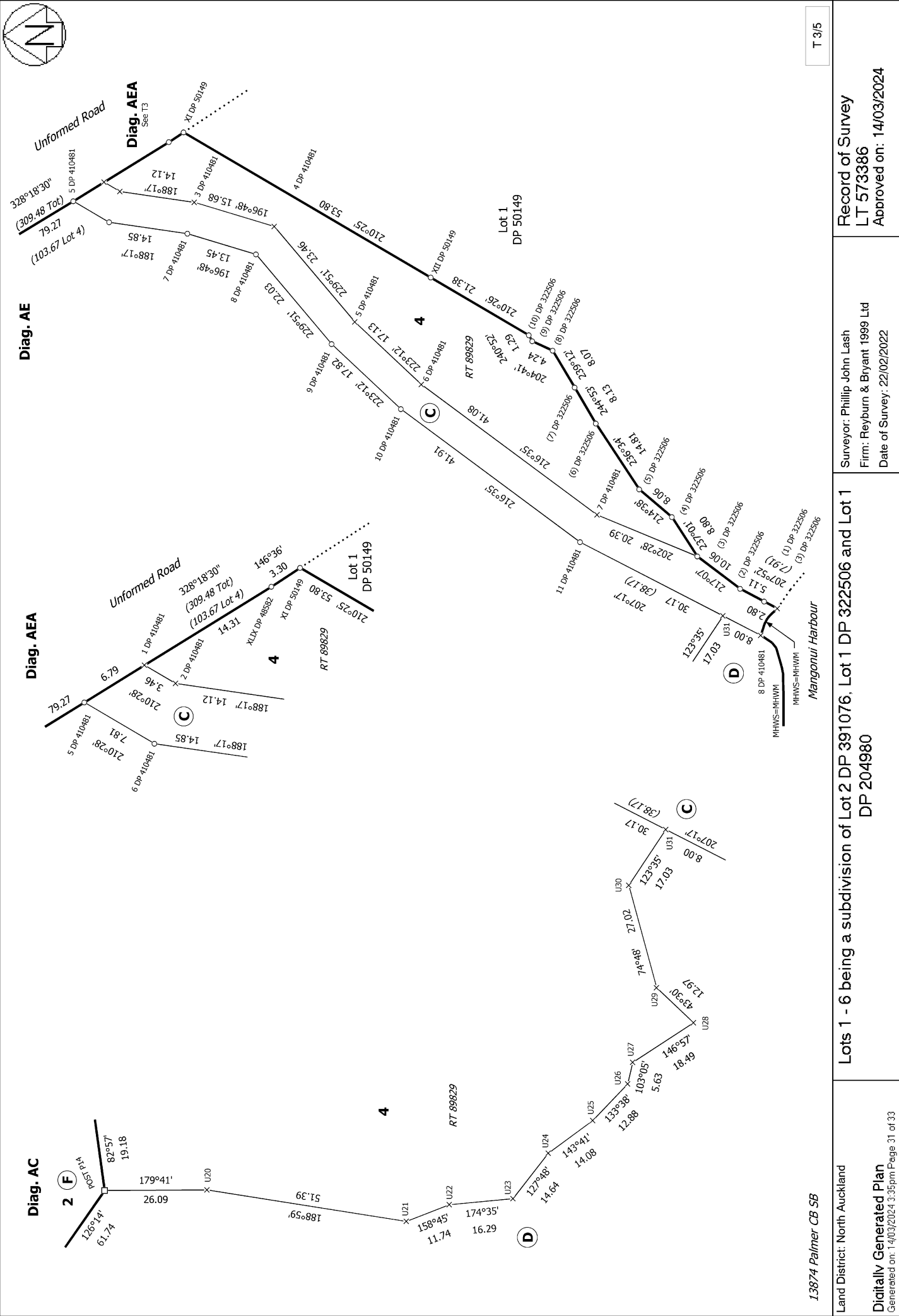
Land District: North Auckland

Digitally Generated Plan  
Generated on: 14/03/2024 3:35pm Page 30 of 33

Lots 1 - 6 being a subdivision of Lot 2 DP 391076, Lot 1 DP 322506 and Lot 1 DP 204980

Surveyor: Phillip John Lash  
Firm: Reyburn & Bryant 1999 Ltd  
Date of Survey: 22/02/2022

Record of Survey  
LT 573386  
Approved on: 14/03/2024



13874 Palmer CB SB

T 3/5

Land District: North Auckland  
 Digitally Generated Plan  
 Generated on: 14/03/2024 3:35pm Page 31 of 33

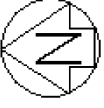
Lots 1 - 6 being a subdivision of Lot 2 DP 391076, Lot 1 DP 322506 and Lot 1 DP 204980

Surveyor: Phillip John Lash  
 Firm: Reyburn & Bryant 1999 Ltd  
 Date of Survey: 22/02/2022

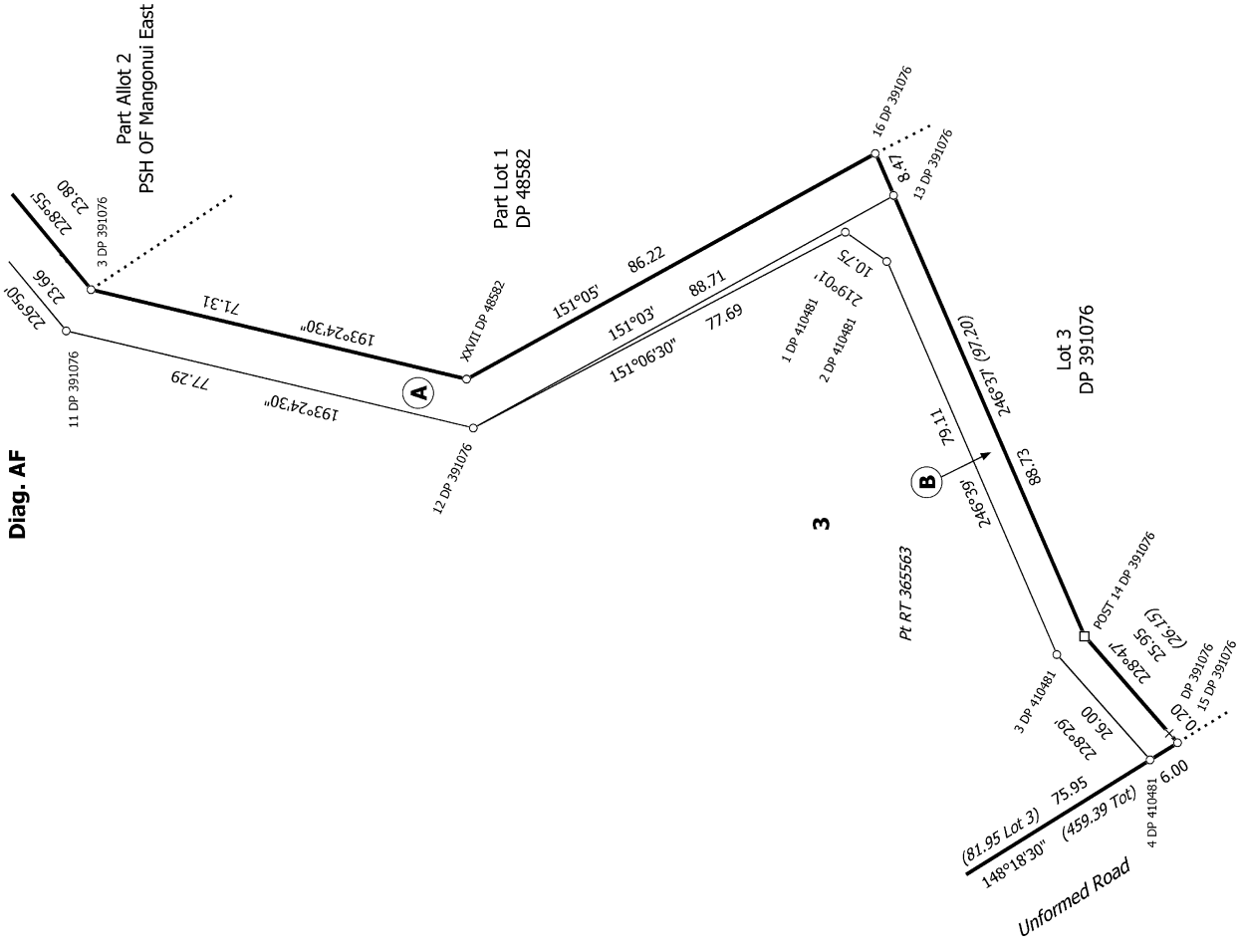
Record of Survey  
 LT 573386  
 Approved on: 14/03/2024







Diag. AF



13874 Palmer CB 5B

Land District: North Auckland

Digitally Generated Plan

Generated on: 14/03/2024 3:35pm Page 33 of 33

Lots 1 - 6 being a subdivision of Lot 2 DP 391076, Lot 1 DP 322506 and Lot 1 DP 204980

Surveyor: Phillip John Lash  
Firm: Reyburn & Bryant 1999 Ltd  
Date of Survey: 22/02/2022

Record of Survey  
LT 573386  
Approved on: 14/03/2024