



# Record of Survey - LT 570184

---

**Survey Number** LT 570184  
**Surveyor Reference** Z5050 - Longwood  
**Surveyor** Stephen James Fox  
**Survey Firm** Southern Land Limited  
**Surveyor Declaration** I Stephen James Fox, being a licensed cadastral surveyor, certify that--  
 (a) this dataset provided by me and its related survey are accurate, correct and in accordance with the Cadastral Survey Act 2002 and Cadastral Survey Rules 2021; and  
 (b) the survey was undertaken by me or under my personal direction.  
 Declared on 06 Nov 2023 01:15 PM

---

## Survey Details

**Dataset Description** Lots 1 to 6 being Subdivision of Parts Lot 1 DP 14937, Part Section 4, Parts Section 5, Parts Section 6A, Section 52, 53, 69 & Closed Road between Part Section 4 & Section 10 & intersecting Part Section 5 Block I Longwood Survey District and easements over Part Section 5, Part Section 9 & Section 57 Block I Longwood Survey District

**Purpose** LT Subdivision

<b>Status</b>	Approved as to Survey	<b>Type</b>	Survey
<b>Land District</b>	Southland	<b>Survey Class</b>	Class B
<b>Meridional Circuit</b>	Bluff 2000	<b>Vertical Datum</b>	None

---

## Survey Dates

<b>Surveyed Date</b>	05/07/2022	<b>Certified Date</b>	06/11/2023
<b>Submitted Date</b>	06/11/2023 13:15:11	<b>Survey Approval Date</b>	07/11/2023
<b>Deposit Date</b>			

---

## Referenced Surveys

Survey Number	Land District	Bearing Correction
DP 6700	Southland	0°00'00"
LT 524	Southland	-0°01'00"
SO 2794	Southland	-0°01'00"
SO 6477	Southland	0°00'00"
SO 7326	Southland	0°00'00"
SO 12031	Southland	0°00'00"
SO 2007	Southland	-0°01'00"
SO 2734	Southland	-0°01'00"
SO 3075	Southland	-0°01'00"
SO 6518	Southland	0°00'00"
SO 7227	Southland	0°00'00"
SO 7903	Southland	0°00'00"
DP 13123	Southland	0°00'00"
SO 10620	Southland	0°00'00"
SO 7236	Southland	0°00'00"
SO 3689	Southland	-0°01'00"
DP 418284	Southland	0°00'00"

# Record of Survey - LT 570184

---

## Territorial Authorities

Southland District

---

## Comprised In

RT SL12A/341  
 RT SL9C/938  
 RT SL8C/388  
 RT SLA4/542  
 RT SL8D/49  
 RT SL190/41  
 RT SL108/202

---

## Created Parcels

Parcels	Parcel Intent	Area	RT Reference
Lot 1 Deposited Plan 570184	Fee Simple Title	79.7965 Ha	1075211
Lot 3 Deposited Plan 570184	Fee Simple Title	6.8040 Ha	1075211
Lot 4 Deposited Plan 570184	Fee Simple Title	1.0204 Ha	1075213
Lot 5 Deposited Plan 570184	Fee Simple Title	11.0107 Ha	1075213
Lot 6 Deposited Plan 570184	Fee Simple Title	14.4150 Ha	1075214
Area A Deposited Plan 570184	Easement		
Area B Deposited Plan 570184	Easement		
Area C Deposited Plan 570184	Easement		
Area D Deposited Plan 570184	Easement		
Area E Deposited Plan 570184	Easement		
Area F Deposited Plan 570184	Easement		
Area G Deposited Plan 570184	Easement		
Area H Deposited Plan 570184	Easement		
Area I Deposited Plan 570184	Easement		
Area J Deposited Plan 570184	Easement		
Area K Deposited Plan 570184	Easement		
Area L Deposited Plan 570184	Easement		
Area M Deposited Plan 570184	Easement		
Area X Deposited Plan 570184	Easement		
Area Y Deposited Plan 570184	Easement		
Area Z Deposited Plan 570184	Easement		
Lot 2 Deposited Plan 570184	Fee Simple Title	110.2000 Ha	1075212
<b>Total Area</b>		<u>223.2466 Ha</u>	

# Mark and Vector

Survey Number DP 570184

Meridional Circuit Bluff 2000

From	To	Code	Bearing	Adpt Surv	Bearing Correction	Distance	Adpt Surv	Class
E TE TUMUTU	17561	ob0	314°07'07" M			1,568.44 M		
17561	IT II DP 570184	ob2	14°54'46" M			1,913.04 M		
IT II DP 570184	E TE TUMUTU	ob208	167°50'20" M			3,007.99 M		
17561	IT IV DP 570184	ob3	34°54'35" M			724.96 M		
IT IV DP 570184	E TE TUMUTU	ob217	157°08'10" M			1,830.18 M		
IT IV DP 570184	IT V DP 570184	ob218	357°30'20" M			514.78 M		
IT V DP 570184	IT II DP 570184	ob242	7°41'10" M			746.51 M		
IT II DP 570184	IT I DP 570184	ob209	114°04'50" M			248.12 M		
IT I DP 570184	IT III DP 570184	ob308	159°06'18" M			1,052.08 M		
IT III DP 570184	IT IV DP 570184	ob372	255°57'00" M			700.14 M		
IT III DP 570184	E TE TUMUTU	ob373	179°00'56" M			1,856.63 M		
IT IV DP 570184	IT L DP 6700	ob219	304°57'00" M			568.56 M		
IT L DP 6700	IT VII SO 7236	ob87	207°49'15" M			585.56 M		
IT VII SO 7236	17561	ob16	141°07'20" M			516.83 M		
17561	IT SO 6518	ob4	239°36'00" M			22.41 M		
IT SO 6518	IT X SO 7236	ob168	343°46'40" M			282.15 M		
IT X SO 7236	IT VII SO 7236	ob17	302°15'10" M			267.55 M		
IT L DP 6700	IT X DP 6700	ob88	2°38'08" M			1,081.83 M		
IT X DP 6700	IT II DP 570184	ob192	107°08'40" M			516.67 M		
IT II DP 570184	IT VIII DP 6700	ob210	287°18'40" M			516.35 M		
IT VIII DP 6700	IT X DP 6700	ob193	208°51'35" M			1.53 M		
17561	IT XV SO 7236	ob5	120°09'10" M			778.56 M		
IT XV SO 7236	E TE TUMUTU	ob335	147°08'05" M			834.32 M		
17561	THE DOWNS	ob6	312°42'11" A	SO 7227	0°00'00"	1,844.35 A	SO 7227	
THE DOWNS	IT II SO 6477	ob1	71°27'05" A	SO 6477	0°00'00"	161.24 A	SO 6477	
IT II SO 6477	IT XII SO 6518	ob10	122°53'00" A	SO 6518	0°00'00"	486.69 A	SO 6518	
IT XII SO 6518	IT IV SO 7236	ob11	146°28'20" A	SO 12031	0°00'00"	90.96 A	SO 12031	
IT IV SO 7236	IT V SO 7236	ob12	146°28'00" A	SO 7236	0°00'00"	513.88 A	SO 7236	
IT V SO 7236	IT VI SO 7236	ob14	134°07'00" A	DP 13123	0°00'00"	128.67 A	DP 13123	
IT VI SO 7236	IT VII SO 7236	ob15	134°07'00" A	SO 12031	0°00'00"	59.75 A	SO 12031	
IT X SO 7236	IT II SO 6518	ob18	122°15'20" A	SO 7236	0°00'00"	396.30 A	SO 7236	
IT II SO 6518	IT XI SO 7236	ob44	145°30'30" A	SO 7236	0°00'00"	86.68 A	SO 7236	
IT XI SO 7236	IT I SO 6518	ob47	145°30'30" A	SO 7236	0°00'00"	197.04 A	SO 7236	
IT I SO 6518	17561	ob48	295°02'20" A	SO 7236	0°00'00"	438.91 A	SO 7236	
IT II SO 6518	IT IIA SO 6518	ob45	300°13'40" A	SO 6518	0°00'00"	124.68 A	SO 6518	
IT IIA SO 6518	IT III SO 6518	ob91	302°45'50" A	SO 6518	0°00'00"	2.05 A	SO 6518	
IT III SO 6518	IT IIIA SO 6518	ob84	229°58'50" A	SO 6518	0°00'00"	59.67 A	SO 6518	
IT IIIA SO 6518	IT SO 6518	ob166	229°58'50" A	SO 6518	0°00'00"	132.11 A	SO 6518	
IT IV SO 7236	IT IV SO 12031	ob13	149°21'20" A	SO 12031	0°00'00"	203.69 A	SO 12031	
IT IV SO 12031	IT III SO 12031	ob50	135°59'00" A	SO 12031	0°00'00"	88.74 A	SO 12031	
IT III SO 12031	IT II SO 12031	ob51	147°41'40" A	SO 12031	0°00'00"	122.61 A	SO 12031	
IT II SO 12031	IT I SO 12031	ob52	144°47'00" A	SO 12031	0°00'00"	129.77 A	SO 12031	

# Mark and Vector

Survey Number DP 570184

Meridional Circuit Bluff 2000

From	To	Code	Bearing	Adpt Surv	Bearing Correction	Distance	Adpt Surv	Class
IT I SO 12031	IT VI SO 7236	ob55	134°33'30"	A SO 12031	0°00'00"	98.72 A	SO 12031	
IT II SO 12031	IT IV DP 6700	ob53	53°02'30"	A SO 12031	0°00'00"	283.25 A	SO 12031	
IT IV DP 6700	IT L DP 6700	ob56	60°54'50"	A DP 6700	0°00'00"	268.92 A	DP 6700	
IT II SO 12031	PEG (1) SO 12031	ob54	102°35'00"	A SO 12031	0°00'00"	18.95 A	SO 12031	
PEG (1) SO 12031	POST (2) SO 12031	ob57	144°05'50"	A SO 12031	0°00'00"	112.72 A	SO 12031	Class B
POST (2) SO 12031	PEG (1) SO 13123	ob71	133°21'50"	A SO 7236	0°00'00"	37.71 A	SO 12031	Class B
PEG (1) SO 13123	IT V SO 7236	ob60	301°01'30"	A DP 13123	0°00'00"	69.09 A	DP 13123	
PEG (1) SO 13123	PEG (2) DP 13123	ob61	50°00'00"	A DP 13123	0°00'00"	66.48 A	DP 13123	Class B
PEG (2) DP 13123	PEG (3) DP 13123	ob62	133°21'50"	A DP 13123	0°00'00"	56.73 A	DP 13123	Class B
PEG (3) DP 13123	PEG (4) DP 13123	ob72	223°21'50"	A DP 13123	0°00'00"	66.03 A	DP 13123	Class B
PEG (4) DP 13123	UNMK BH DP 418284	ob64	133°21'50"	A SO 7236	0°00'00"	8.06 A	DP 418284	Class B
UNMK BH DP 418284	UNMK BI DP 418284	ob65	133°21'50"	A SO 7236	0°00'00"	4.04 A	DP 418284	Class B
UNMK BI DP 418284	PEG (14) SO 7236	ob67	133°21'50"	A SO 7236	0°00'00"	1.02 A	DP 418284	Class B
PEG (14) SO 7236	IT VI SO 7236	ob69	268°13'00"	A SO 7236	0°00'00"	23.21 A	SO 7236	
PEG (14) SO 7236	PEG (11) SO 7236	ob70	123°16'40"	A SO 7236	0°00'00"	24.20 A	SO 7236	Class B
PEG (11) SO 7236	UNMK BJ DP 418284	ob73	49°59'00"	A SO 2007	-0°01'00"	18.18 A	DP 418284	Class B
UNMK BJ DP 418284	UNMK BK DP 418284	ob74	49°59'00"	A SO 2007	-0°01'00"	4.16 A	DP 418284	Class B
UNMK BK DP 418284	UNMK 125 DP 570184	ob75	49°59'00"	A SO 2007	-0°01'00"	39.86 C		Class B
UNMK 125 DP 570184	UNMK 131 DP 570184	ob457	49°59'00"	A SO 2007	-0°01'00"	3.02 C		Class B
UNMK 131 DP 570184	PEG (24) SO 2007	ob459	49°59'00"	A SO 2007	-0°01'00"	134.48 C		Class B
PEG (24) SO 2007	PEG (20) SO 2007	ob76	139°59'00"	A SO 2007	-0°01'00"	171.38 A	SO 2007	Class B
PEG (20) SO 2007	UNMK BO DP 418284	ob77	229°59'00"	A SO 2007	-0°01'00"	102.49 A	DP 418284	Class B
UNMK BO DP 418284	UNMK BN DP 418284	ob78	229°59'00"	A SO 2007	-0°01'00"	3.01 A	DP 418284	Class B
UNMK BN DP 418284	UNMK 124 DP 570184	ob80	229°59'00"	A SO 2007	-0°01'00"	9.15 C		Class B
UNMK 124 DP 570184	UNMK 123 DP 570184	ob461	229°59'00"	A SO 2007	-0°01'00"	3.02 C		Class B

# Mark and Vector

Survey Number DP 570184

Meridional Circuit Bluff 2000

From	To	Code	Bearing	Adpt Surv	Bearing Correction	Distance	Adpt Surv	Class
UNMK 123 DP 570184	PEG (8) SO 7236	ob463	229°59'00"	A SO 2007	-0°01'00"	37.07 C		Class B
PEG (8) SO 7236	PEG (13) SO 7236	ob82	130°37'30"	A SO 7236	0°00'00"	47.56 A SO 7236		Class B
PEG (13) SO 7236	IT X SO 7236	ob83	130°37'30"	A SO 7236	0°00'00"	59.24 A SO 7236		
PEG (1) SO 12031	UNMK 127 DP 570184	ob58	49°59'50"	A SO 12031	0°00'00"	70.41 C		Class B
UNMK 127 DP 570184	UNMK 128 DP 570184	ob455	49°59'50"	A SO 12031	0°00'00"	3.01 C		Class B
UNMK 128 DP 570184	POST DP 6700	ob456	49°59'50"	A SO 12031	0°00'00"	195.95 C		Class B
POST DP 6700	IT IV DP 6700	ob85	49°59'00"	A DP 6700	0°00'00"	1.97 A DP 6700		
IT L DP 6700	IT LI DP 6700	ob89	301°41'00"	A DP 6700	0°00'00"	156.25 A DP 6700		
IT LI DP 6700	IT XV DP 6700	ob92	277°46'20"	A DP 6700	0°00'00"	221.91 A DP 6700		
IT XV DP 6700	IT XII SO 6518	ob93	270°47'35"	A DP 6700	0°00'00"	389.78 A DP 6700		
IT L DP 6700	IT V DP 6700	ob90	60°54'50"	A DP 6700	0°00'00"	70.29 A DP 6700		
IT V DP 6700	IT VI DP 6700	ob186	13°38'10"	A DP 6700	0°00'00"	503.54 A DP 6700		
IT VI DP 6700	IT VII DP 6700	ob187	13°55'20"	A DP 6700	0°00'00"	237.24 A DP 6700		
IT VII DP 6700	IT XXII DP 6700	ob188	306°32'00"	A DP 6700	0°00'00"	137.72 A DP 6700		
IT XXII DP 6700	IT XXII DP 6700	ob189	232°23'10"	A DP 6700	0°00'00"	159.67 A DP 6700		
IT XXII DP 6700	IT XX DP 6700	ob190	275°37'30"	A DP 6700	0°00'00"	132.63 A DP 6700		
IT XX DP 6700	IT X DP 6700	ob191	28°51'35"	A DP 6700	0°00'00"	376.12 A DP 6700		
IT VIII DP 6700	IT IX DP 6700	ob194	91°33'00"	A DP 6700	0°00'00"	188.70 A DP 6700		
IT IX DP 6700	IT X DP 6700	ob104	271°07'50"	A DP 6700	0°00'00"	189.42 A DP 6700		
POST DP 6700	PEG LVI DP 6700	ob86	57°08'20"	A DP 6700	0°00'00"	268.32 A DP 6700		Class B
PEG LVI DP 6700	IT L DP 6700	ob94	140°40'30"	A DP 6700	0°00'00"	17.56 A DP 6700		
PEG LVI DP 6700	PEG LV DP 6700	ob95	57°08'20"	A DP 6700	0°00'00"	35.30 A DP 6700		Class B
PEG LV DP 6700	POST Va DP 6700	ob96	57°08'20"	A DP 6700	0°00'00"	36.91 A DP 6700		Class B
POST Va DP 6700	UNMK DP 6700	ob97	12°56'50"	A DP 6700	0°00'00"	59.75 A DP 6700		Class B
UNMK DP 6700	POST VIa DP 6700	ob207	12°56'50"	A DP 6700	0°00'00"	354.08 A DP 6700		Class B
POST VIa DP 6700	POST VIIa DP 6700	ob98	26°21'30"	A DP 6700	0°00'00"	323.28 A DP 6700		Class B
POST VIIa DP 6700	UNMK 175 DP 570184	ob99	303°07'20"	A DP 6700	0°00'00"	43.37 C		Class B
UNMK 175 DP 570184	PEG VIIb DP 6700	ob487	303°07'20"	A DP 6700	0°00'00"	3.42 C		Class B
PEG VIIb DP 6700	PEG XXIIa DP 6700	ob100	304°25'00"	A DP 6700	0°00'00"	158.78 A DP 6700		Class B

# Mark and Vector

Survey Number DP 570184

Meridional Circuit Bluff 2000

From	To	Code	Bearing	Adpt Surv	Bearing Correction	Distance	Adpt Surv	Class
PEG XXIIa DP 6700	PEG XIa DP 6700	ob101	28°50'10"	A DP 6700	0°00'00"	255.74 A	DP 6700	Class B
PEG XIa DP 6700	IT IX DP 6700	ob102	180°00'00"	A DP 6700	0°00'00"	7.85 A	DP 6700	
PEG (1) SO 12031	PEG (1) DP 6700	ob59	229°59'50"	A SO 12031	0°00'00"	12.55 A	SO 12031	
PEG (1) DP 6700	PEG LXa DP 6700	ob105	229°50'30"	A DP 6700	0°00'00"	20.26 A	DP 6700	
PEG LXa DP 6700	PEG LX DP 6700	ob106	229°50'30"	A DP 6700	0°00'00"	23.86 A	DP 6700	Class B
PEG LX DP 6700	IT V SO 7236	ob108	120°09'30"	A DP 6700	0°00'00"	89.90 A	DP 6700	
PEG LXa DP 6700	POST SO 7236	ob107	146°25'30"	A SO 7236	0°00'00"	37.64 C		Class B
POST SO 7236	IT V SO 7236	ob110	127°02'00"	A SO 7236	0°00'00"	48.40 A	SO 7236	
POST SO 7236	PEG (6) SO 7236	ob111	133°21'50"	A SO 7236	0°00'00"	188.68 A	SO 7236	Class B
PEG (6) SO 7236	IT VI SO 7236	ob112	330°28'00"	A SO 7236	0°00'00"	12.47 A	SO 7236	
PEG (6) SO 7236	PEG (3) SO 7236	ob113	150°28'00"	A SO 7236	0°00'00"	19.13 A	SO 7236	Class B
PEG (3) SO 7236	PEG (4) SO 7236	ob114	129°02'00"	A SO 7236	0°00'00"	33.05 A	SO 7236	Class B
PEG (4) SO 7236	IT VII SO 7236	ob115	13°47'00"	A SO 7236	0°00'00"	6.92 A	SO 7236	
PEG (4) SO 7236	PEG (15) SO 7236	ob116	133°21'20"	A SO 7236	0°00'00"	71.33 A	SO 7236	Class B
PEG (15) SO 7236	PEG 9 DP 570184	ob118	123°22'30"	A SO 7236	0°00'00"	124.67 C		Class B
PEG 9 DP 570184	PEG (12) SO 7236	ob403	123°22'30"	A SO 7236	0°00'00"	11.96 C		Class B
PEG (12) SO 7236	PEG (18) SO 7236	ob119	110°07'20"	A SO 7236	0°00'00"	18.93 A	SO 7236	Class B
PEG (18) SO 7236	PEG (16) SO 7236	ob120	110°07'20"	A SO 7236	0°00'00"	24.20 A	SO 7236	
PEG (16) SO 7236	PEG (17) SO 7236	ob121	110°07'20"	A SO 7236	0°00'00"	9.15 A	SO 7236	Class B
PEG (17) SO 7236	IT X SO 7236	ob122	64°55'00"	A SO 7236	0°00'00"	14.18 A	SO 7236	
PEG (17) SO 7236	UNMK 114 DP 570184	ob123	122°45'50"	A SO 7236	0°00'00"	2.72 C		Class B
UNMK 114 DP 570184	UNMK 112 DP 570184	ob480	122°45'50"	A SO 7236	0°00'00"	8.78 C		Class B
UNMK 112 DP 570184	PEG IVA SO 6518	ob481	122°45'50"	A SO 7236	0°00'00"	240.52 C		Class B
PEG IVA SO 6518	PEG IVB SO 6518	ob124	229°58'50"	A SO 6518	0°00'00"	5.27 A	SO 6518	Class B
PEG IVB SO 6518	PEG (3) SO 6518	ob125	122°45'50"	A SO 6518	0°00'00"	24.14 A	SO 6518	
PEG (3) SO 6518	PEG (2) SO 6518	ob126	49°58'50"	A SO 6518	0°00'00"	5.27 A	SO 6518	Class B
PEG (2) SO 6518	IT IIA SO 6518	ob128	49°58'50"	A SO 6518	0°00'00"	10.52 A	SO 6518	

# Mark and Vector

Survey Number DP 570184

Meridional Circuit Bluff 2000

From	To	Code	Bearing	Adpt Surv	Bearing Correction	Distance	Adpt Surv	Class
PEG (2) SO 6518	UNMK (1) SO 2007	ob129	122°45'50"	A SO 7326	0°00'00"	121.75	A SO 2007	Class B
UNMK (1) SO 2007	PEG (10) SO 7236	ob137	122°45'50"	A SO 7326	0°00'00"	1.35	C	Class B
PEG (10) SO 7236	IT II SO 6518	ob139	49°10'00"	A SO 7236	0°00'00"	16.23	A SO 7236	
UNMK (1) SO 2007	PEG (5) SO 2007	ob138	49°59'00"	A SO 2007	-0°01'00"	21.08	A SO 2007	
PEG (5) SO 2007	UNMK (2) SO 2007	ob132	302°45'50"	A SO 7236	0°00'00"	407.67	C	Class B
UNMK (2) SO 2007	UNMK CA DP 418284	ob134	302°45'50"	A SO 7236	0°00'00"	15.84	A DP 418284	Class B
UNMK CA DP 418284	UNMK BZ DP 418284	ob135	302°45'50"	A SO 7236	0°00'00"	3.14	A DP 418284	Class B
UNMK BZ DP 418284	UNMK 115 DP 570184	ob136	302°45'50"	A SO 7236	0°00'00"	2.80	C	Class B
UNMK 115 DP 570184	UNMK 116 DP 570184	ob272	302°45'50"	A SO 7236	0°00'00"	18.35	C	Class B
UNMK 116 DP 570184	UNMK 117 DP 570184	ob470	302°45'50"	A SO 7236	0°00'00"	3.65	C	Class B
UNMK 117 DP 570184	PEG (13) SO 7236	ob472	302°45'50"	A SO 7236	0°00'00"	3.84	C	Class B
PEG (10) SO 7236	PEG (6) SO 2007	ob140	122°45'50"	A SO 7236	0°00'00"	29.91	A SO 7236	
PEG (6) SO 2007	PEG (9) SO 7236	ob142	145°37'00"	A SO 7236	0°00'00"	32.93	A SO 7236	
PEG (9) SO 7236	IT XI SO 7236	ob143	134°45'00"	A SO 7236	0°00'00"	24.80	A SO 7236	
UNMK BH DP 418284	UNMK BL DP 418284	ob66	85°29'30"	A DP 418284	0°00'00"	10.80	A DP 418284	Class B
UNMK BL DP 418284	UNMK BK DP 418284	ob149	96°07'10"	A DP 418284	0°00'00"	30.43	A DP 418284	Class B
UNMK BI DP 418284	UNMK BM DP 418284	ob68	85°29'30"	A DP 418284	0°00'00"	7.80	A DP 418284	Class B
UNMK BM DP 418284	UNMK BJ DP 418284	ob150	96°07'10"	A DP 418284	0°00'00"	27.27	A DP 418284	Class B
UNMK BO DP 418284	UNMK CI DP 418284	ob79	145°41'10"	A DP 418284	0°00'00"	32.57	A DP 418284	Class B
UNMK CI DP 418284	UNMK CJ DP 418284	ob151	156°53'00"	A DP 418284	0°00'00"	10.23	A DP 418284	Class B
UNMK CJ DP 418284	UNMK CK DP 418284	ob152	177°09'00"	A DP 418284	0°00'00"	15.35	A DP 418284	Class B
UNMK CK DP 418284	UNMK CL DP 418284	ob153	193°36'00"	A DP 418284	0°00'00"	9.22	A DP 418284	Class B
UNMK CL DP 418284	UNMK CM DP 418284	ob154	177°05'00"	A DP 418284	0°00'00"	6.83	A DP 418284	Class B
UNMK CM DP 418284	UNMK 193 DP 570184	ob155	145°09'00"	A DP 418284	0°00'00"	6.82	C	Class B
UNMK 193 DP 570184	UNMK CN DP 418284	ob437	145°09'00"	A DP 418284	0°00'00"	1.97	C	Class B

# Mark and Vector

Survey Number DP 570184

Meridional Circuit Bluff 2000

From	To	Code	Bearing	Adpt Surv	Bearing Correction	Distance	Adpt Surv	Class
UNMK CN DP 418284	UNMK CO DP 418284	ob156	189°16'00"	A DP 418284	0°00'00"	4.87 A	DP 418284	Class B
UNMK CO DP 418284	UNMK CA DP 418284	ob157	229°52'00"	A DP 418284	0°00'00"	3.61 A	DP 418284	Class B
UNMK BN DP 418284	UNMK CB DP 418284	ob81	145°41'10"	A DP 418284	0°00'00"	31.97 A	DP 418284	Class B
UNMK CB DP 418284	UNMK CC DP 418284	ob158	156°53'00"	A DP 418284	0°00'00"	9.40 A	DP 418284	Class B
UNMK CC DP 418284	UNMK CD DP 418284	ob159	177°09'00"	A DP 418284	0°00'00"	14.38 A	DP 418284	Class B
UNMK CD DP 418284	UNMK CE DP 418284	ob160	193°36'00"	A DP 418284	0°00'00"	9.22 A	DP 418284	Class B
UNMK CE DP 418284	UNMK CF DP 418284	ob161	177°05'00"	A DP 418284	0°00'00"	8.12 A	DP 418284	Class B
UNMK CF DP 418284	UNMK 192 DP 570184	ob162	145°09'00"	A DP 418284	0°00'00"	7.79 C		Class B
UNMK 192 DP 570184	UNMK CG DP 418284	ob435	145°09'00"	A DP 418284	0°00'00"	0.65 C		Class B
UNMK CG DP 418284	UNMK CH DP 418284	ob163	189°16'00"	A DP 418284	0°00'00"	2.55 A	DP 418284	Class B
UNMK CH DP 418284	UNMK BZ DP 418284	ob164	229°52'00"	A DP 418284	0°00'00"	3.42 A	DP 418284	Class B
PEG (3) SO 6518	PEG (1) SO 6518	ob127	229°58'50"	A SO 6518	0°00'00"	43.87 A	SO 6518	Class B
PEG (1) SO 6518	IT IIIA SO 6518	ob165	302°45'50"	A SO 6518	0°00'00"	2.05 A	SO 6518	Class B
IT IIIA SO 6518	PEG IIIb SO 6518	ob167	302°45'50"	A SO 6518	0°00'00"	22.09 A	SO 6518	Class B
PEG IIIb SO 6518	PEG IVB SO 6518	ob374	49°58'50"	A SO 6518	0°00'00"	43.87 A	SO 6518	Class B
PEG (4) SO 7236	PEG (17) SO 2007	ob117	229°58'50"	A SO 7903	0°00'00"	158.24 A	SO 7903	
PEG (17) SO 2007	UNMK (1) SO 2007	ob130	229°58'50"	A SO 7903	0°00'00"	38.22 A	SO 7903	
UNMK (1) SO 2007	UNMK (3) SO 2007	ob172	134°56'50"	A SO 7903	0°00'00"	124.86 A	SO 7903	
UNMK (3) SO 2007	PEG (26) SO 2007	ob145	86°52'20"	A SO 7903	0°00'00"	41.14 A	SO 7903	
PEG (26) SO 2007	PEG (27) SO 2007	ob178	86°52'20"	A SO 7903	0°00'00"	100.58 A	SO 7903	Class B
PEG (27) SO 2007	UNMK 109 DP 570184	ob177	53°55'20"	A SO 7903	0°00'00"	118.28 C		Class B
UNMK 109 DP 570184	UNMK 110 DP 570184	ob474	53°55'20"	A SO 7903	0°00'00"	3.98 C		Class B
UNMK 110 DP 570184	PEG (18) SO 7236	ob475	53°55'20"	A SO 7903	0°00'00"	6.87 C		Class B
PEG (26) SO 2007	PEG (19) SO 2007	ob179	135°58'50"	A SO 7903	0°00'00"	26.72 A	SO 7903	
PEG (19) SO 2007	PEG (21) SO 2007	ob181	86°52'20"	A SO 7903	0°00'00"	89.12 A	SO 7903	Class B



# Mark and Vector

Survey Number DP 570184

Meridional Circuit Bluff 2000

From	To	Code	Bearing	Adpt Surv	Bearing Correction	Distance	Adpt Surv	Class
PEG (21) SO 2007	UNMK 111 DP 570184	ob183	53°55'20"	A SO 7903	0°00'00"	141.78 C		Class B
UNMK 111 DP 570184	UNMK 113 DP 570184	ob476	53°55'20"	A SO 7903	0°00'00"	3.98 C		Class B
UNMK 113 DP 570184	PEG (16) SO 7236	ob478	53°53'20"	A SO 7903	0°00'00"	2.78 C		Class B
PEG (17) SO 2007	PEG (26) SO 2007	ob131	137°48'00"	C		149.17 A SO 7903		Class B
IT SO 6518	POST SO 6518	ob169	192°30'00"	A SO 6518	0°00'00"	3.22 A SO 6518		
PEG (19) SO 2007	PEG (22) SO 2007	ob182	133°18'10"	A SO 7903	0°00'00"	337.74 A SO 7903		Class B
PEG (22) SO 2007	POST SO 6518	ob184	49°58'50"	A SO 7903	0°00'00"	82.02 C		
POST SO 6518	PEG (1) SO 6518	ob185	49°58'50"	A SO 6518	0°00'00"	135.26 C		
UNMK (3) SO 2007	UNMK SO 2007	ob146	133°51'50"	A SO 7903	0°00'00"	389.02 A SO 7903		
UNMK SO 2007	PEG (22) SO 2007	ob147	49°58'50"	A SO 7903	0°00'00"	32.59 A SO 7903		
PEG LX DP 6700	IT LXI DP 6700	ob109	233°24'40"	A DP 6700	0°00'00"	170.49 A DP 6700		
IT LXI DP 6700	PEG (2) DP 6700	ob170	313°59'10"	A DP 6700	0°00'00"	751.12 A DP 6700		
PEG (2) DP 6700	IT XVI DP 6700	ob173	73°25'30"	A DP 6700	0°00'00"	122.01 A DP 6700		
IT XVI DP 6700	IT XII SO 6518	ob174	89°12'40"	A DP 6700	0°00'00"	304.07 A DP 6700		
IT LXI DP 6700	PEG LXIa DP 6700	ob171	69°53'30"	A DP 6700	0°00'00"	30.96 A DP 6700		
PEG LXIa DP 6700	PEG LX DP 6700	ob175	49°50'30"	A DP 6700	0°00'00"	141.10 A DP 6700		Class B
PEG LXIa DP 6700	UNMK 194 DP 570184	ob176	125°57'00"	C		32.90 C		Class B
PEG (5) SO 2007	PEG (1) SO 3689	ob133	49°59'00"	A SO 2007	-0°01'00"	438.43 A SO 3689		Class B
PEG (1) SO 3689	PEG (3) SO 3689	ob445	49°59'00"	A SO 2007	-0°01'00"	15.09 A SO 3689		Class B
PEG (3) SO 3689	UNMK 134 DP 570184	ob446	49°59'00"	A SO 2007	-0°01'00"	4.43 C		Class B
UNMK 134 DP 570184	PEG (1) SO 3689	ob482	49°59'00"	A SO 2007	-0°01'00"	10.66 C		Class B
PEG (1) SO 3689	UNMK 152 DP 570184	ob447	49°59'00"	A SO 2007	-0°01'00"	685.18 C		Class B
UNMK 152 DP 570184	UNMK (9) SO 2007	ob485	49°59'00"	A SO 2007	-0°01'00"	3.00 C		Class B
UNMK (9) SO 2007	UNMK (4) SO 2007	ob448	319°59'00"	A SO 2007	-0°01'00"	211.97 A SO 2007		Class B
UNMK (4) SO 2007	UNMK (6) SO 2007	ob449	319°59'00"	A SO 2007	-0°01'00"	80.47 A SO 2007		Class B
UNMK (6) SO 2007	PEG (7) SO 2007	ob450	319°59'00"	A SO 2007	-0°01'00"	15.09 A SO 2007		Class B
PEG (7) SO 2007	UNMK DP 6700	ob451	269°59'00"	A SO 2007	-0°01'00"	916.12 C		
IT I SO 6518	IT XIII SO 7236	ob49	126°41'40"	A SO 7236	0°00'00"	241.06 A SO 7236		

# Mark and Vector

Survey Number DP 570184

Meridional Circuit Bluff 2000

From	To	Code	Bearing	Adpt Surv	Bearing Correction	Distance	Adpt Surv	Class
IT XIII SO 7236	IT XV SO 7236	ob333	126°41'40"	A SO 7236	0°00'00"	102.60	A SO 7236	
PEG XIa DP 6700	PEG (4) SO 2734	ob103	89°59'00"	A SO 2734	-0°01'00"	797.91	A DP 6700	Class B
PEG (4) SO 2734	PEG 16 SO 2734	ob148	89°59'00"	A SO 2734	-0°01'00"	10.06	A SO 2734	
PEG 16 SO 2734	PEG 15 SO 2734	ob195	154°57'00"	A SO 2734	-0°01'00"	38.20	A SO 2734	
PEG 15 SO 2734	PEG 14 SO 2734	ob196	115°57'00"	A SO 2734	-0°01'00"	62.42	A SO 2734	
PEG 14 SO 2734	PEG 13 SO 2734	ob197	178°33'00"	A SO 2734	-0°01'00"	70.53	A SO 2734	
PEG 13 SO 2734	PEG 12 SO 2734	ob198	185°39'00"	A SO 2734	-0°01'00"	81.90	A SO 2734	
PEG 12 SO 2734	PEG 11 SO 2734	ob199	186°44'00"	A SO 2734	-0°01'00"	108.21	A SO 2734	
PEG 11 SO 2734	PEG 10 SO 2734	ob206	156°54'00"	A SO 2734	-0°01'00"	112.21	A SO 2734	
PEG 10 SO 2734	PEG 9 SO 2734	ob200	146°44'00"	A SO 2734	-0°01'00"	116.11	A SO 2734	
PEG 9 SO 2734	PEG 8 SO 2734	ob201	145°56'30"	A SO 2734	-0°01'00"	205.19	A SO 2734	
PEG 8 SO 2734	PEG 7 SO 2734	ob202	187°08'30"	A SO 2734	-0°01'00"	203.98	A SO 2734	
PEG 7 SO 2734	PEG 6 SO 2734	ob203	150°53'00"	A SO 2734	-0°01'00"	75.14	A SO 2734	
PEG 6 SO 2734	PEG (16) SO 2007	ob204	185°10'30"	A SO 2734	-0°01'00"	14.18	A SO 2734	
PEG (16) SO 2007	PEG (3) LT 524	ob205	185°10'30"	A SO 2734	-0°01'00"	16.29	A SO 2734	
PEG (3) LT 524	PEG (2) LT 524	ob263	217°04'00"	A LT 524	-0°01'00"	72.34	A LT 524	
PEG (2) LT 524	PEG (4) LT 524	ob264	187°03'30"	A LT 524	-0°01'00"	92.56	A LT 524	
PEG (4) LT 524	PEG (1) LT 524	ob265	229°59'00"	A LT 524	-0°01'00"	120.96	A LT 524	
PEG (1) LT 524	UNMK (9) SO 2007	ob266	319°59'00"	A SO 2007	-0°01'00"	10.06	C	
IT XV SO 7236	IT XVII SO 7236	ob336	91°19'40"	A SO 7236	0°00'00"	364.56	A SO 7236	
IT XVII SO 7236	IT XIX SO 7236	ob337	106°35'00"	A SO 7236	0°00'00"	168.36	A SO 7236	
IT XIX SO 7236	IT XXI SO 7236	ob338	124°58'00"	A SO 7236	0°00'00"	105.25	A SO 7236	
IT XXI SO 7236	IT XXVI SO 7236	ob339	146°29'40"	A SO 7236	0°00'00"	511.61	A SO 7236	
IT XXVI SO 7236	IT XXVII SO 7236	ob340	138°07'10"	A SO 7236	0°00'00"	61.56	A SO 7236	
IT XXVII SO 7236	E TE TUMUTU	ob341	256°59'20"	A SO 7236	0°00'00"	495.50	A SO 7236	
PEG (9) SO 7236	PEG (11) SO 2007	ob144	145°37'00"	A SO 7236	0°00'00"	222.63	A SO 7236	Class B
PEG (11) SO 2007	IT (1) SO 6518	ob342	46°11'00"	A SO 2007	-0°01'00"	10.19	A SO 2007	
IT (1) SO 6518	IT I SO 6518	ob343	230°19'00"	A SO 6518	0°00'00"	5.03	A SO 6518	
IT XIII SO 7236	PEG (19) SO 7236	ob334	214°58'00"	A SO 7236	0°00'00"	3.58	A SO 7236	
PEG (19) SO 7236	PEG (7) SO 7236	ob344	129°39'00"	A SO 7236	0°00'00"	68.42	A SO 7236	Class B
PEG (7) SO 7236	PEG (2) SO 7236	ob345	129°39'00"	A SO 7236	0°00'00"	11.55	A SO 7236	Class B
PEG (2) SO 7236	PEG (5) SO 7236	ob346	112°37'40"	A SO 7236	0°00'00"	40.50	A SO 7236	Class B
PEG (5) SO 7236	IT XV SO 7236	ob347	299°21'00"	A SO 7236	0°00'00"	16.82	A SO 7236	

# Mark and Vector

Survey Number DP 570184

Meridional Circuit Bluff 2000

From	To	Code	Bearing	Adpt Surv	Bearing Correction	Distance	Adpt Surv	Class
PEG (5) SO 7236	PEG (12) SO 2007	ob348	257°38'00"	A SO 3075	-0°01'00"	25.35	A SO 3075	
PEG (12) SO 2007	PEG (10) SO 2007	ob350	292°59'00"	A SO 2007	-0°01'00"	39.77	A SO 2007	
PEG (10) SO 2007	PEG (1) SO 2007	ob351	320°22'00"	A SO 2007	-0°01'00"	93.34	A SO 2007	
PEG (1) SO 2007	PEG (19) SO 7236	ob352	124°57'00"	A SO 3075	-0°01'00"	26.96	C	Class B
PEG (5) SO 7236	UNMK (1) SO 3075	ob349	120°29'00"	A SO 3075	-0°01'00"	29.57	A SO 3075	Class B
UNMK (1) SO 3075	PEG (14) SO 2007	ob354	77°38'00"	A SO 2007	-0°01'00"	9.19	A SO 3075	
PEG (14) SO 2007	PEG (15) SO 2007	ob356	103°02'00"	A SO 2007	-0°01'00"	28.08	A SO 3075	
PEG (15) SO 2007	PEG (23) SO 2007	ob357	81°26'00"	A SO 2007	-0°01'00"	49.04	A SO 3075	
PEG (23) SO 2007	PEG (1) SO 7236	ob358	90°40'30"	A SO 2007	-0°01'00"	237.52	A SO 7236	
PEG (1) SO 7236	IT XVII SO 7236	ob359	7°00'00"	A SO 7236	0°00'00"	15.01	A SO 7236	
UNMK (1) SO 3075	PEG (25) SO 2007	ob355	257°38'00"	A SO 2007	-0°01'00"	53.45	A SO 3075	Class B
PEG (25) SO 2007	PEG (4) SO 2007	ob360	292°59'00"	A SO 2007	-0°01'00"	51.12	A SO 2007	Class B
PEG (4) SO 2007	PEG (2) SO 2007	ob361	320°22'00"	A SO 2007	-0°01'00"	4.79	A SO 2007	Class B
PEG (2) SO 2007	PEG (10) SO 2007	ob362	49°59'00"	A SO 2007	-0°01'00"	20.12	A SO 2007	
PEG (2) SO 2007	UNMK (2) SO 3075	ob363	320°22'00"	A SO 2007	-0°01'00"	166.39	A SO 3075	
UNMK (2) SO 3075	PEG (4) SO 2007	ob366	320°22'00"	A SO 2007	-0°01'00"	5.65	A SO 3075	Class B
PEG (4) SO 2007	PEG (11) SO 2007	ob365	306°45'00"	A SO 2007	-0°01'00"	133.62	A SO 2007	Class B
PEG (1) SO 2007	UNMK (2) SO 3075	ob353	304°57'00"	A SO 3075	-0°01'00"	75.68	A SO 3075	Class B
PEG (2) SO 2007	PEG (18) SO 2007	ob364	229°59'00"	A SO 2007	-0°01'00"	226.41	A SO 2007	Class B
PEG (10) SO 7236	PEG 1 DP 570184	ob141	134°45'00"	A SO 7236	0°00'00"	28.72	C	Class B
PEG 1 DP 570184	PEG (9) SO 7236	ob370	134°45'00"	A SO 7236	0°00'00"	32.88	C	Class B
PEG 1 DP 570184	PEG 2 DP 570184	ob371	227°24'40"	C		215.19	C	Class B
PEG 2 DP 570184	UNMK 188 DP 570184	ob369	227°24'40"	C		70.71	C	Class B
17561	PEG 1 DP 570184	ob7	85°58'20"	M		245.73	M	
17561	PEG 2 DP 570184	ob8	145°58'20"	M		154.91	M	

# Mark and Vector

Survey Number DP 570184

Meridional Circuit Bluff 2000

From	To	Code	Bearing	Adpt Surv	Bearing Correction	Distance	Adpt Surv	Class
IT X SO 7236	POST 3 DP 570184	ob19	259°50'00" M			202.55 M		
IT X SO 7236	POST 4 DP 570184	ob20	269°48'00" M			167.11 M		
IT X SO 7236	POST 5 DP 570184	ob21	279°22'00" M			169.35 M		
IT X SO 7236	POST 6 DP 570184	ob22	279°23'00" M			133.78 M		
IT X SO 7236	PEG 7 DP 570184	ob23	285°09'00" M			138.22 M		
IT X SO 7236	POST 8 DP 570184	ob24	284°00'00" M			74.52 M		
IT X SO 7236	PEG 9 DP 570184	ob25	284°27'20" M			74.27 M		
IT X SO 7236	POST 10 DP 570184	ob26	315°57'00" M			33.87 M		
IT X SO 7236	POST 11 DP 570184	ob27	8°16'00" M			47.55 M		
IT X SO 7236	POST 12 DP 570184	ob28	18°09'00" M			81.09 M		
IT X SO 7236	POST 13 DP 570184	ob29	14°38'00" M			93.63 M		
IT X SO 7236	POST 14 DP 570184	ob30	15°18'00" M			102.77 M		
IT X SO 7236	POST 15 DP 570184	ob31	21°17'00" M			108.03 M		
IT X SO 7236	POST 16 DP 570184	ob32	22°44'00" M			117.50 M		
IT X SO 7236	POST 17 DP 570184	ob33	27°00'00" M			122.91 M		
IT X SO 7236	POST 18 DP 570184	ob34	29°09'00" M			134.48 M		
IT X SO 7236	POST 19 DP 570184	ob35	58°33'00" M			126.87 M		
IT X SO 7236	POST 20 DP 570184	ob36	63°40'00" M			154.22 M		
IT X SO 7236	POST 21 DP 570184	ob37	63°15'00" M			170.86 M		
IT X SO 7236	POST 22 DP 570184	ob38	59°36'00" M			184.56 M		
IT X SO 7236	POST 23 DP 570184	ob39	54°24'00" M			217.45 M		
IT X SO 7236	POST 24 DP 570184	ob40	49°37'00" M			241.63 M		
IT X SO 7236	POST 25 DP 570184	ob41	46°23'00" M			257.20 M		
IT X SO 7236	POST 26 DP 570184	ob42	43°58'00" M			277.79 M		

# Mark and Vector

Survey Number DP 570184

Meridional Circuit Bluff 2000

From	To	Code	Bearing	Adpt Surv	Bearing Correction	Distance	Adpt Surv	Class
IT X SO 7236	POST 27 DP 570184	ob43	47°02'00" M			295.73 M		
IT IV DP 570184	POST 28 DP 570184	ob220	248°26'00" M			318.62 M		
IT IV DP 570184	POST 29 DP 570184	ob221	249°10'00" M			295.09 M		
IT IV DP 570184	POST 30 DP 570184	ob222	250°24'00" M			280.74 M		
IT IV DP 570184	POST 31 DP 570184	ob223	254°28'00" M			271.21 M		
IT IV DP 570184	POST 32 DP 570184	ob224	253°40'00" M			263.00 M		
IT IV DP 570184	POST 33 DP 570184	ob225	254°15'00" M			239.20 M		
IT IV DP 570184	POST 34 DP 570184	ob226	262°19'00" M			204.93 M		
IT IV DP 570184	POST 35 DP 570184	ob227	262°51'00" M			176.45 M		
IT IV DP 570184	POST 36 DP 570184	ob228	264°57'00" M			149.78 M		
IT IV DP 570184	POST 37 DP 570184	ob229	266°51'00" M			137.54 M		
IT IV DP 570184	POST 38 DP 570184	ob230	267°04'00" M			118.74 M		
IT IV DP 570184	POST 39 DP 570184	ob231	271°29'00" M			114.09 M		
IT IV DP 570184	POST 40 DP 570184	ob232	295°25'00" M			96.93 M		
IT IV DP 570184	POST 41 DP 570184	ob233	299°47'00" M			93.53 M		
IT IV DP 570184	POST 42 DP 570184	ob234	303°32'00" M			113.74 M		
IT IV DP 570184	POST 43 DP 570184	ob235	311°21'00" M			112.86 M		
IT IV DP 570184	POST 44 DP 570184	ob236	339°08'00" M			142.30 M		
IT IV DP 570184	POST 45 DP 570184	ob237	344°46'00" M			167.54 M		
IT IV DP 570184	POST 46 DP 570184	ob238	348°54'00" M			199.06 M		
IT IV DP 570184	POST 47 DP 570184	ob239	349°13'00" M			213.17 M		
IT IV DP 570184	POST 48 DP 570184	ob240	347°55'00" M			239.82 M		
IT IV DP 570184	POST 49 DP 570184	ob241	348°20'00" M			254.16 M		
IT V DP 570184	POST 50 DP 570184	ob243	185°45'00" M			236.06 M		

# Mark and Vector

Survey Number DP 570184

Meridional Circuit Bluff 2000

From	To	Code	Bearing	Adpt Surv	Bearing Correction	Distance	Adpt Surv	Class
IT V DP 570184	POST 51 DP 570184	ob244	183°34'00" M			199.37 M		
IT V DP 570184	POST 52 DP 570184	ob245	180°37'00" M			175.82 M		
IT V DP 570184	POST 53 DP 570184	ob246	181°04'00" M			165.00 M		
IT V DP 570184	POST 54 DP 570184	ob247	182°17'00" M			154.59 M		
IT V DP 570184	POST 55 DP 570184	ob248	182°46'00" M			140.95 M		
IT V DP 570184	POST 56 DP 570184	ob249	191°11'00" M			91.29 M		
IT V DP 570184	POST 57 DP 570184	ob250	210°11'00" M			73.55 M		
IT V DP 570184	POST 58 DP 570184	ob251	248°38'00" M			61.12 M		
IT V DP 570184	POST 59 DP 570184	ob252	262°01'00" M			59.42 M		
IT V DP 570184	POST 60 DP 570184	ob253	308°55'00" M			69.23 M		
IT V DP 570184	POST 61 DP 570184	ob254	325°42'00" M			82.06 M		
IT V DP 570184	POST 62 DP 570184	ob255	340°29'00" M			97.68 M		
IT V DP 570184	POST 63 DP 570184	ob256	349°06'00" M			121.09 M		
IT V DP 570184	POST 64 DP 570184	ob257	11°58'00" M			150.44 M		
IT V DP 570184	POST 65 DP 570184	ob258	25°01'00" M			202.30 M		
IT V DP 570184	POST 66 DP 570184	ob259	19°36'00" M			217.10 M		
IT V DP 570184	POST 67 DP 570184	ob260	14°40'00" M			265.58 M		
IT V DP 570184	POST 68 DP 570184	ob261	14°31'00" M			344.60 M		
IT V DP 570184	POST 69 DP 570184	ob262	16°19'00" M			380.66 M		
IT II DP 570184	POST 70 DP 570184	ob211	177°05'00" M			342.09 M		
IT II DP 570184	POST 71 DP 570184	ob212	176°28'00" M			323.23 M		
IT II DP 570184	POST 72 DP 570184	ob213	170°04'00" M			290.32 M		
IT II DP 570184	POST 73 DP 570184	ob214	167°20'00" M			264.58 M		
IT II DP 570184	POST 74 DP 570184	ob215	163°05'00" M			232.35 M		

# Mark and Vector

Survey Number DP 570184

Meridional Circuit Bluff 2000

From	To	Code	Bearing	Adpt Surv	Bearing Correction	Distance	Adpt Surv	Class
IT II DP 570184	POST 75 DP 570184	ob216	147°12'00" M			165.45 M		
IT I DP 570184	POST 76 DP 570184	ob309	257°02'00" M			139.50 M		
IT I DP 570184	POST 77 DP 570184	ob310	256°31'00" M			130.03 M		
IT I DP 570184	POST 78 DP 570184	ob311	265°12'00" M			101.35 M		
IT I DP 570184	POST 79 DP 570184	ob312	274°15'00" M			83.60 M		
IT I DP 570184	POST 80 DP 570184	ob313	263°07'00" M			72.65 M		
IT I DP 570184	POST 81 DP 570184	ob314	263°48'00" M			66.05 M		
IT I DP 570184	POST 82 DP 570184	ob315	290°20'00" M			59.18 M		
IT I DP 570184	POST 83 DP 570184	ob316	304°24'00" M			52.43 M		
IT I DP 570184	POST 84 DP 570184	ob317	316°39'00" M			47.26 M		
IT I DP 570184	POST 85 DP 570184	ob318	332°36'00" M			42.77 M		
IT I DP 570184	POST 86 DP 570184	ob319	340°38'00" M			42.96 M		
IT I DP 570184	POST 87 DP 570184	ob320	350°21'00" M			46.23 M		
IT I DP 570184	POST 88 DP 570184	ob321	11°25'00" M			71.93 M		
IT I DP 570184	POST 89 DP 570184	ob322	21°49'00" M			106.51 M		
IT I DP 570184	POST 90 DP 570184	ob323	26°42'00" M			125.83 M		
IT I DP 570184	POST 91 DP 570184	ob324	28°31'00" M			169.80 M		
IT I DP 570184	POST 92 DP 570184	ob325	34°29'00" M			189.04 M		
IT I DP 570184	POST 93 DP 570184	ob326	39°09'00" M			204.00 M		
IT I DP 570184	POST 94 DP 570184	ob327	55°55'00" M			242.30 M		
IT I DP 570184	POST 95 DP 570184	ob328	56°44'00" M			259.67 M		
IT I DP 570184	POST 96 DP 570184	ob329	60°06'00" M			279.99 M		
IT I DP 570184	POST 97 DP 570184	ob330	64°12'00" M			293.19 M		
IT I DP 570184	POST 98 DP 570184	ob331	65°22'00" M			299.98 M		

# Mark and Vector

Survey Number DP 570184

Meridional Circuit Bluff 2000

From	To	Code	Bearing	Adpt Surv	Bearing Correction	Distance	Adpt Surv	Class
IT I DP 570184	POST 99 DP 570184	ob332	65°56'00"	M		349.85 M		
PEG (26) SO 2007	POST 3 DP 570184	ob180	50°50'00"	C		63.94 C		Class B
POST 3 DP 570184	POST 4 DP 570184	ob268	42°32'00"	C		47.72 C		Class B
POST 4 DP 570184	POST 5 DP 570184	ob269	0°02'00"	C		28.15 C		Class B
POST 5 DP 570184	POST 6 DP 570184	ob270	99°18'00"	C		35.57 C		Class B
POST 6 DP 570184	PEG 7 DP 570184	ob271	354°19'00"	C		14.38 C		Class B
PEG 7 DP 570184	POST 8 DP 570184	ob400	106°29'40"	C		63.73 C		Class B
POST 8 DP 570184	PEG 9 DP 570184	ob401	36°52'00"	C		0.64 C		Class B
POST 10 DP 570184	UNMK 115 DP 570184	ob267	53°13'00"	C		0.40 C		
UNMK 115 DP 570184	UNMK 192 DP 570184	ob273	53°13'00"	C		6.25 C		Class B
UNMK 192 DP 570184	UNMK 193 DP 570184	ob436	53°13'00"	C		3.00 C		Class B
UNMK 193 DP 570184	POST 11 DP 570184	ob438	53°13'00"	C		28.28 C		Class B
POST 11 DP 570184	UNMK 119 DP 570184	ob307	31°33'00"	C		3.04 C		Class B
UNMK 119 DP 570184	UNMK 120 DP 570184	ob465	31°33'00"	C		3.71 C		Class B
UNMK 120 DP 570184	POST 12 DP 570184	ob467	31°33'00"	C		28.46 C		Class B
POST 12 DP 570184	POST 13 DP 570184	ob274	353°14'00"	C		13.63 C		Class B
POST 13 DP 570184	POST 14 DP 570184	ob275	22°06'00"	C		9.21 C		Class B
POST 14 DP 570184	POST 15 DP 570184	ob276	82°46'00"	C		12.19 C		Class B
POST 15 DP 570184	POST 16 DP 570184	ob277	38°47'00"	C		9.89 C		Class B
POST 16 DP 570184	POST 17 DP 570184	ob278	83°44'00"	C		10.46 C		Class B
POST 17 DP 570184	POST 18 DP 570184	ob279	50°44'00"	C		12.54 C		Class B
POST 18 DP 570184	POST 19 DP 570184	ob280	140°11'00"	C		66.73 C		Class B
POST 19 DP 570184	POST 20 DP 570184	ob281	85°46'00"	C		30.07 C		Class B
POST 20 DP 570184	POST 21 DP 570184	ob282	59°24'00"	C		16.68 C		Class B



# Mark and Vector

Survey Number DP 570184

Meridional Circuit Bluff 2000

From	To	Code	Bearing	Adpt Surv	Bearing Correction	Distance	Adpt Surv	Class
POST 21 DP 570184	POST 22 DP 570184	ob283	21°51'00"	C		17.77 C		Class B
POST 22 DP 570184	POST 23 DP 570184	ob284	27°58'00"	C		37.58 C		Class B
POST 23 DP 570184	POST 24 DP 570184	ob285	13°36'00"	C		30.83 C		Class B
POST 24 DP 570184	POST 25 DP 570184	ob286	5°53'00"	C		20.98 C		Class B
POST 25 DP 570184	POST 26 DP 570184	ob287	16°27'00"	C		23.47 C		Class B
POST 26 DP 570184	POST 27 DP 570184	ob288	86°03'00"	C		23.60 C		Class B
POST 27 DP 570184	POST 28 DP 570184	ob289	1°07'00"	C		16.26 C		Class B
POST 28 DP 570184	POST 29 DP 570184	ob290	59°19'00"	C		23.86 C		Class B
POST 29 DP 570184	POST 30 DP 570184	ob291	46°25'00"	C		15.63 C		Class B
POST 30 DP 570184	POST 31 DP 570184	ob292	8°22'00"	C		21.78 C		Class B
POST 31 DP 570184	POST 32 DP 570184	ob293	98°30'00"	C		9.02 C		Class B
POST 32 DP 570184	POST 33 DP 570184	ob294	67°50'00"	C		23.94 C		Class B
POST 33 DP 570184	POST 34 DP 570184	ob295	35°52'00"	C		46.31 C		Class B
POST 34 DP 570184	POST 35 DP 570184	ob296	79°01'00"	C		28.53 C		Class B
POST 35 DP 570184	POST 36 DP 570184	ob297	71°16'00"	C		27.33 C		Class B
POST 36 DP 570184	POST 37 DP 570184	ob298	64°38'00"	C		13.13 C		Class B
POST 37 DP 570184	POST 38 DP 570184	ob299	85°29'00"	C		18.81 C		Class B
POST 38 DP 570184	POST 39 DP 570184	ob300	26°39'00"	C		10.10 C		Class B
POST 39 DP 570184	POST 40 DP 570184	ob375	34°26'00"	C		46.86 C		Class B
POST 40 DP 570184	POST 41 DP 570184	ob376	52°41'00"	C		8.01 C		Class B
POST 41 DP 570184	POST 42 DP 570184	ob377	320°13'00"	C		21.31 C		Class B
POST 42 DP 570184	POST 43 DP 570184	ob378	40°42'00"	C		15.47 C		Class B
POST 43 DP 570184	POST 44 DP 570184	ob379	30°14'00"	C		67.60 C		Class B
POST 44 DP 570184	POST 45 DP 570184	ob380	13°05'00"	C		29.45 C		Class B

# Mark and Vector

Survey Number DP 570184

Meridional Circuit Bluff 2000

From	To	Code	Bearing	Adpt Surv	Bearing Correction	Distance	Adpt Surv	Class
POST 45 DP 570184	POST 46 DP 570184	ob381	9°36'00"	C		34.16 C		Class B
POST 46 DP 570184	POST 47 DP 570184	ob382	353°40'00"	C		14.16 C		Class B
POST 47 DP 570184	POST 48 DP 570184	ob383	337°39'00"	C		27.14 C		Class B
POST 48 DP 570184	POST 49 DP 570184	ob384	355°16'00"	C		14.45 C		Class B
POST 49 DP 570184	POST 50 DP 570184	ob385	9°56'00"	C		30.98 C		Class B
POST 50 DP 570184	POST 51 DP 570184	ob386	17°24'00"	C		37.61 C		Class B
POST 51 DP 570184	POST 52 DP 570184	ob387	24°24'00"	C		25.45 C		Class B
POST 52 DP 570184	POST 53 DP 570184	ob388	353°47'00"	C		10.90 C		Class B
POST 53 DP 570184	POST 54 DP 570184	ob389	343°37'00"	C		10.95 C		Class B
POST 54 DP 570184	POST 55 DP 570184	ob390	357°18'00"	C		13.70 C		Class B
POST 55 DP 570184	POST 56 DP 570184	ob391	347°59'00"	C		52.38 C		Class B
POST 56 DP 570184	POST 57 DP 570184	ob392	323°26'00"	C		32.35 C		Class B
POST 57 DP 570184	POST 58 DP 570184	ob393	334°14'00"	C		45.87 C		Class B
POST 58 DP 570184	POST 59 DP 570184	ob394	352°11'00"	C		14.15 C		Class B
POST 59 DP 570184	POST 60 DP 570184	ob395	5°30'00"	C		51.98 C		Class B
POST 60 DP 570184	POST 61 DP 570184	ob396	17°25'00"	C		25.47 C		Class B
POST 61 DP 570184	POST 62 DP 570184	ob397	29°16'00"	C		27.83 C		Class B
POST 62 DP 570184	POST 63 DP 570184	ob398	19°56'00"	C		28.55 C		Class B
POST 63 DP 570184	POST 64 DP 570184	ob399	62°25'00"	C		61.03 C		Class B
POST 64 DP 570184	POST 65 DP 570184	ob301	56°22'20"	C		65.28 C		Class B
POST 65 DP 570184	POST 66 DP 570184	ob302	329°02'00"	C		24.72 C		Class B
POST 66 DP 570184	POST 67 DP 570184	ob303	353°55'00"	C		52.70 C		Class B
POST 67 DP 570184	POST 68 DP 570184	ob304	14°00'40"	C		79.02 C		Class B
POST 68 DP 570184	POST 69 DP 570184	ob305	32°57'00"	C		37.81 C		Class B

# Mark and Vector

Survey Number DP 570184

Meridional Circuit Bluff 2000

From	To	Code	Bearing	Adpt Surv	Bearing Correction	Distance	Adpt Surv	Class
POST 69 DP 570184	POST 70 DP 570184	ob306	17°25'00"	C		34.41 C		Class B
POST 70 DP 570184	POST 71 DP 570184	ob404	7°31'00"	C		19.20 C		Class B
POST 71 DP 570184	POST 72 DP 570184	ob405	39°27'00"	C		47.46 C		Class B
POST 72 DP 570184	POST 73 DP 570184	ob406	15°55'00"	C		28.94 C		Class B
POST 73 DP 570184	POST 74 DP 570184	ob407	14°59'00"	C		37.11 C		Class B
POST 74 DP 570184	POST 75 DP 570184	ob408	14°49'00"	C		86.09 C		Class B
POST 75 DP 570184	UNMK 161 DP 570184	ob409	8°21'00"	C		3.33 C		Class B
UNMK 161 DP 570184	POST 76 DP 570184	ob488	8°21'00"	C		3.27 C		Class B
POST 76 DP 570184	POST 77 DP 570184	ob411	84°05'00"	C		9.55 C		Class B
POST 77 DP 570184	POST 78 DP 570184	ob412	49°22'00"	C		33.54 C		Class B
POST 78 DP 570184	POST 79 DP 570184	ob413	50°13'00"	C		22.93 C		Class B
POST 79 DP 570184	POST 80 DP 570184	ob414	142°58'00"	C		18.67 C		Class B
POST 80 DP 570184	POST 81 DP 570184	ob415	76°19'00"	C		6.65 C		Class B
POST 81 DP 570184	POST 82 DP 570184	ob416	20°10'00"	C		29.51 C		Class B
POST 82 DP 570184	POST 83 DP 570184	ob417	53°29'00"	C		15.22 C		Class B
POST 83 DP 570184	POST 84 DP 570184	ob418	66°19'00"	C		11.81 C		Class B
POST 84 DP 570184	POST 85 DP 570184	ob419	74°13'00"	C		13.26 C		Class B
POST 85 DP 570184	POST 86 DP 570184	ob420	64°49'00"	C		6.01 C		Class B
POST 86 DP 570184	POST 87 DP 570184	ob421	52°10'00"	C		8.23 C		Class B
POST 87 DP 570184	POST 88 DP 570184	ob422	41°25'00"	C		33.24 C		Class B
POST 88 DP 570184	POST 89 DP 570184	ob423	41°46'00"	C		38.05 C		Class B
POST 89 DP 570184	POST 90 DP 570184	ob424	51°24'00"	C		21.69 C		Class B
POST 90 DP 570184	POST 91 DP 570184	ob425	33°42'00"	C		44.21 C		Class B
POST 91 DP 570184	POST 92 DP 570184	ob426	75°41'00"	C		26.79 C		Class B

# Mark and Vector

Survey Number DP 570184

Meridional Circuit Bluff 2000

From	To	Code	Bearing	Adpt Surv	Bearing Correction	Distance	Adpt Surv	Class
POST 92 DP 570184	POST 93 DP 570184	ob427	83°46'00"	C		21.90 C		Class B
POST 93 DP 570184	POST 94 DP 570184	ob428	107°19'20"	C		75.30 C		Class B
POST 94 DP 570184	POST 95 DP 570184	ob429	67°58'00"	C		17.73 C		Class B
POST 95 DP 570184	POST 96 DP 570184	ob430	96°23'00"	C		25.77 C		Class B
POST 96 DP 570184	POST 97 DP 570184	ob431	119°24'00"	C		24.38 C		Class B
POST 97 DP 570184	POST 98 DP 570184	ob432	106°26'00"	C		9.09 C		Class B
POST 98 DP 570184	POST 99 DP 570184	ob433	69°20'00"	C		49.97 C		Class BD
POST 99 DP 570184	UNMK 100 DP 570184	ob434	337°50'00"	C		11.07 C		Class BD
UNMK 100 DP 570184	UNMK 101 DP 570184	ob453	334°12'00"	C		80.16 C		Class B
UNMK 101 DP 570184	PEG (4) SO 2734	ob454	337°35'00"	C		35.59 C		Class B
IT II SO 6518	IT (1) SO 6518	ob46	134°09'30"	A SO 6518	0°00'00"	27.92 A SO 6518		
IT (1) SO 6518	IT IIA SO 6518	ob439	302°46'00"	A SO 2007	-0°01'00"	151.92 A SO 2007		
IT (1) SO 6518	PEG (9) SO 2007	ob440	44°11'30"	A SO 2007	-0°01'00"	10.26 A SO 2007		
PEG (9) SO 2007	PEG (3) SO 2007	ob441	302°46'00"	A SO 2007	-0°01'00"	8.03 A SO 2007		
PEG (3) SO 2007	PEG (5) SO 2007	ob442	302°46'00"	A SO 2007	-0°01'00"	21.06 C		
PEG (3) SO 2007	PEG (3) SO 2794	ob443	49°59'00"	A SO 2007	-0°01'00"	412.07 A SO 2794		
PEG (3) SO 2794	UNMK 137 DP 570184	ob548	49°59'00"	A SO 2007	-0°01'00"	52.15 C		
UNMK 137 DP 570184	UNMK 144 DP 570184	ob490	49°59'00"	A SO 2007	-0°01'00"	3.24 C		Class B
UNMK 144 DP 570184	PEG (1) SO 2794	ob492	49°59'00"	A SO 2007	-0°01'00"	80.92 C		
PEG (1) SO 2794	UNMK 151 DP 570184	ob483	49°59'00"	A SO 2007	-0°01'00"	599.14 C		
UNMK 151 DP 570184	UNMK (5) SO 2007	ob549	49°59'00"	A SO 2007	-0°01'00"	3.00 C		Class B
UNMK (5) SO 2007	PEG (1) LT 524	ob444	319°59'00"	A SO 2007	-0°01'00"	10.06 A LT 524		
PEG (1) SO 2794	UNMK 141 DP 570184	ob484	117°16'00"	A SO 2794	-0°01'00"	359.66 C		
UNMK 141 DP 570184	UNMK 140 DP 570184	ob552	117°16'00"	A SO 2794	-0°01'00"	3.42 C		Class B
UNMK 140 DP 570184	PEG (2) SO 2794	ob554	117°16'00"	A SO 2794	-0°01'00"	1.74 C		
UNMK SO 3688	UNMK 147 DP 570184	ob559	319°59'00"	A SO 2007	-0°01'00"	276.84 C		

# Mark and Vector

Survey Number DP 570184

Meridional Circuit Bluff 2000

From	To	Code	Bearing	Adpt Surv	Bearing Correction	Distance	Adpt Surv	Class
UNMK 147 DP 570184	UNMK (5) SO 2007	ob551	319°59'00"	A SO 2007	-0°01'00"	289.21 C		Class B
POST 8 DP 570184	UNMK 104 DP 570184	ob402	216°52'00"	C		19.55 C		Class B
UNMK 104 DP 570184	UNMK 105 DP 570184	ob494	164°45'00"	C		6.53 C		Class B
UNMK 105 DP 570184	UNMK 106 DP 570184	ob495	74°45'00"	C		17.44 C		Class B
UNMK 106 DP 570184	UNMK 107 DP 570184	ob496	17°29'00"	C		1.21 C		Class B
UNMK 107 DP 570184	UNMK 108 DP 570184	ob497	17°29'00"	C		3.00 C		Class B
UNMK 108 DP 570184	PEG (12) SO 7236	ob499	17°29'00"	C		7.62 C		Class B
UNMK 107 DP 570184	UNMK 109 DP 570184	ob498	102°47'00"	C		12.51 C		Class B
UNMK 108 DP 570184	UNMK 110 DP 570184	ob500	102°47'00"	C		14.88 C		Class B
UNMK 111 DP 570184	UNMK 112 DP 570184	ob477	102°47'00"	C		24.33 C		Class B
UNMK 113 DP 570184	UNMK 114 DP 570184	ob479	102°47'00"	C		13.46 C		Class B
UNMK 117 DP 570184	UNMK 122 DP 570184	ob473	67°25'00"	C		37.05 C		Class B
UNMK 122 DP 570184	UNMK 123 DP 570184	ob501	313°21'50"	C		62.10 C		Class B
UNMK 116 DP 570184	UNMK 118 DP 570184	ob471	67°25'00"	C		36.69 C		Class B
UNMK 118 DP 570184	UNMK 119 DP 570184	ob502	85°32'00"	C		13.27 C		Class B
UNMK 120 DP 570184	UNMK 121 DP 570184	ob468	265°32'00"	C		14.58 C		Class B
UNMK 121 DP 570184	UNMK 124 DP 570184	ob503	313°21'50"	C		63.55 C		Class B
UNMK 123 DP 570184	UNMK 125 DP 570184	ob464	313°21'50"	C		172.51 C		Class B
UNMK 124 DP 570184	UNMK 131 DP 570184	ob462	313°21'50"	C		172.51 C		Class B
UNMK 125 DP 570184	PEG (3) DP 13123	ob458	313°21'50"	C		44.11 C		Class B
PEG (2) DP 13123	UNMK 126 DP 570184	ob63	308°14'00"	C		22.50 C		Class B
UNMK 126 DP 570184	UNMK 127 DP 570184	ob504	325°27'00"	C		128.44 C		Class B
UNMK 131 DP 570184	UNMK 130 DP 570184	ob460	313°21'50"	C		101.24 C		Class B
UNMK 130 DP 570184	UNMK 129 DP 570184	ob505	308°14'00"	C		22.27 C		Class B

# Mark and Vector

Survey Number DP 570184

Meridional Circuit Bluff 2000

From	To	Code	Bearing	Adpt Surv	Bearing Correction	Distance	Adpt Surv	Class
UNMK 129 DP 570184	UNMK 128 DP 570184	ob506	325°27'00"	C		128.27 C		Class B
UNMK 119 DP 570184	UNMK 132 DP 570184	ob466	85°32'00"	C		205.21 C		Class B
UNMK 132 DP 570184	UNMK 133 DP 570184	ob507	72°26'00"	C		128.55 C		Class B
UNMK 133 DP 570184	PEG (3) SO 3689	ob508	93°21'30"	C		350.23 C		Class B
UNMK 120 DP 570184	UNMK 136 DP 570184	ob469	85°32'00"	C		202.68 C		Class B
UNMK 136 DP 570184	UNMK 135 DP 570184	ob509	72°26'00"	C		128.76 C		Class B
UNMK 135 DP 570184	UNMK 134 DP 570184	ob510	93°21'30"	C		354.01 C		Class B
UNMK 137 DP 570184	UNMK 138 DP 570184	ob491	117°45'50"	C		296.72 C		Class B
UNMK 138 DP 570184	UNMK 139 DP 570184	ob511	83°38'00"	C		104.45 C		Class B
UNMK 139 DP 570184	UNMK 140 DP 570184	ob512	55°16'00"	C		25.35 C		Class B
UNMK 144 DP 570184	UNMK 143 DP 570184	ob493	117°45'50"	C		294.57 C		Class B
UNMK 143 DP 570184	UNMK 142 DP 570184	ob514	83°38'00"	C		102.77 C		Class B
UNMK 142 DP 570184	UNMK 141 DP 570184	ob515	55°16'00"	C		22.99 C		Class B
UNMK 140 DP 570184	UNMK 145 DP 570184	ob555	55°16'00"	C		31.32 C		Class B
UNMK 145 DP 570184	UNMK 146 DP 570184	ob560	0°13'00"	C		92.96 C		Class B
UNMK 146 DP 570184	UNMK 147 DP 570184	ob513	53°25'30"	C		371.46 C		Class B
UNMK 141 DP 570184	UNMK 148 DP 570184	ob553	55°16'00"	C		31.35 C		Class B
UNMK 148 DP 570184	UNMK 149 DP 570184	ob556	0°13'00"	C		92.90 C		Class B
UNMK 149 DP 570184	UNMK 150 DP 570184	ob557	53°25'30"	C		369.78 C		Class B
UNMK 150 DP 570184	UNMK 151 DP 570184	ob558	319°59'00"	C		286.21 C		Class B
UNMK 152 DP 570184	UNMK 153 DP 570184	ob486	319°59'00"	C		308.05 C		Class B
UNMK 153 DP 570184	UNMK 154 DP 570184	ob516	338°14'00"	C		75.67 C		Class B
UNMK 154 DP 570184	UNMK 155 DP 570184	ob517	349°45'00"	C		79.55 C		Class B
UNMK 155 DP 570184	UNMK 156 DP 570184	ob518	339°11'00"	C		81.02 C		Class B

# Mark and Vector

Survey Number DP 570184

Meridional Circuit Bluff 2000

From	To	Code	Bearing	Adpt Surv	Bearing Correction	Distance	Adpt Surv	Class
UNMK 156 DP 570184	UNMK 157 DP 570184	ob519	330°02'00"	C		105.09 C		Class B
UNMK 157 DP 570184	UNMK 158 DP 570184	ob520	346°32'00"	C		74.66 C		Class B
UNMK 158 DP 570184	UNMK 159 DP 570184	ob521	343°32'00"	C		69.29 C		Class B
UNMK 159 DP 570184	UNMK 160 DP 570184	ob522	339°09'00"	C		146.25 C		Class B
UNMK 160 DP 570184	POST 75 DP 570184	ob523	304°09'00"	C		158.04 C		Class B
PEG (7) SO 2007	UNMK 168 DP 570184	ob452	338°14'00"	C		74.89 C		Class B
UNMK 168 DP 570184	UNMK 167 DP 570184	ob524	349°45'00"	C		79.53 C		Class B
UNMK 167 DP 570184	UNMK 166 DP 570184	ob525	339°11'00"	C		81.54 C		Class B
UNMK 166 DP 570184	UNMK 165 DP 570184	ob526	330°02'00"	C		104.90 C		Class B
UNMK 165 DP 570184	UNMK 164 DP 570184	ob527	346°32'00"	C		74.30 C		Class B
UNMK 164 DP 570184	UNMK 163 DP 570184	ob528	343°32'00"	C		69.48 C		Class B
UNMK 163 DP 570184	UNMK 162 DP 570184	ob529	339°09'00"	C		147.31 C		Class B
UNMK 162 DP 570184	UNMK 161 DP 570184	ob530	304°09'00"	C		160.44 C		Class B
POST 75 DP 570184	UNMK 169 DP 570184	ob410	304°09'00"	C		5.77 C		Class B
UNMK 169 DP 570184	UNMK 170 DP 570184	ob531	298°25'00"	C		129.33 C		Class B
UNMK 170 DP 570184	UNMK 171 DP 570184	ob532	0°00'00"	C		23.69 C		Class B
UNMK 171 DP 570184	UNMK 172 DP 570184	ob533	338°00'00"	C		1.24 C		Class B
UNMK 172 DP 570184	UNMK 173 DP 570184	ob534	225°31'00"	C		22.10 C		Class B
UNMK 173 DP 570184	UNMK 174 DP 570184	ob536	260°39'00"	C		106.09 C		Class B
UNMK 174 DP 570184	UNMK 175 DP 570184	ob537	241°52'40"	C		163.34 C		Class B
UNMK 161 DP 570184	UNMK 184 DP 570184	ob489	304°09'00"	C		4.47 C		Class B
UNMK 184 DP 570184	UNMK 183 DP 570184	ob538	298°25'00"	C		127.69 C		Class B
UNMK 183 DP 570184	UNMK 182 DP 570184	ob539	0°00'00"	C		23.13 C		Class B
UNMK 182 DP 570184	UNMK 171 DP 570184	ob540	248°00'00"	C		3.24 C		Class B

# Mark and Vector

Survey Number DP 570184

Meridional Circuit Bluff 2000

From	To	Code	Bearing	Adpt Surv	Bearing Correction	Distance	Adpt Surv	Class
UNMK 172 DP 570184	UNMK 178 DP 570184	ob535	338°00'00"	C		3.25 C		Class B
UNMK 178 DP 570184	UNMK 177 DP 570184	ob541	225°31'00"	C		22.39 C		Class B
UNMK 177 DP 570184	UNMK 176 DP 570184	ob543	260°39'00"	C		105.64 C		Class B
UNMK 176 DP 570184	PEG VIIb DP 6700	ob544	241°52'40"	C		165.49 C		Class B
UNMK 178 DP 570184	UNMK 179 DP 570184	ob542	338°00'00"	C		2.01 C		Class B
UNMK 179 DP 570184	UNMK 180 DP 570184	ob545	68°00'00"	C		11.80 C		Class B
UNMK 180 DP 570184	UNMK 181 DP 570184	ob546	158°00'00"	C		6.50 C		Class B
UNMK 181 DP 570184	UNMK 182 DP 570184	ob547	248°00'00"	C		8.56 C		Class B
PEG (18) SO 2007	UNMK 185 DP 570184	ob368	313°00'00"	C		92.60 C		Class B
UNMK 185 DP 570184	UNMK 186 DP 570184	ob562	310°00'00"	C		44.70 C		Class B
UNMK 186 DP 570184	UNMK 187 DP 570184	ob563	313°00'00"	C		273.70 C		Class B
UNMK 187 DP 570184	UNMK 188 DP 570184	ob564	312°39'00"	C		137.17 C		Class B
UNMK 188 DP 570184	UNMK 189 DP 570184	ob561	312°39'00"	C		26.50 C		Class B
UNMK 189 DP 570184	UNMK 190 DP 570184	ob565	307°30'00"	C		14.60 C		Class B
UNMK 190 DP 570184	UNMK 191 DP 570184	ob566	312°00'00"	C		17.90 C		Class B
UNMK 191 DP 570184	PEG (22) SO 2007	ob567	313°49'00"	C		101.30 C		Class B
PEG (2) SO 2794	UNMK SO 3688	ob550	76°25'40"	C		515.26 C		
UNMK 194 DP 570184	UNMK 195 DP 570184	ob568	136°40'00"	C		87.40 C		Class B
UNMK 195 DP 570184	UNMK 196 DP 570184	ob569	135°44'00"	C		77.70 C		Class B
UNMK 196 DP 570184	PEG (17) SO 2007	ob570	134°02'00"	C		79.50 C		Class B
PEG (18) SO 2007	UNMK SO 2007	ob367	229°59'00"	A SO 2007	-0°01'00"	36.21 A SO 2007		
UNMK SO 2007	PEG SO 2007	ob571	312°51'00"	A SO 2007	-0°01'00"	614.05 A SO 2007		
PEG SO 2007	UNMK SO 2007	ob573	313°52'00"	A SO 2007	-0°01'00"	93.99 A SO 2007		
UNMK SO 2007	PEG SO 2007	ob572	132°51'00"	A SO 2007	-0°01'00"	540.26 A SO 2007		
PEG SO 2007	PEG SO 2007	ob574	120°41'00"	A SO 2007	-0°01'00"	315.01 A SO 2007		
PEG SO 2007	E TE TUMUTU	ob575	81°32'00"	A SO 2007	-0°01'00"	49.89 A SO 2007		



# Mark and Vector

Survey Number DP 570184

Meridional Circuit Bluff 2000

From	To	Code	Bearing	Adpt Surv	Bearing Correction	Distance	Adpt Surv	Class
17561	POST 10 DP 570184	ob9	336°47'30" M			308.89 M		

Mark Name	Mark Condition	Description
17561		Brass rod set in top of 23cm square concrete pillar.
E TE TUMUTU		Brass rod with 3/8 Whitworth threaded hole in centre of top of 0.23 m square concrete pillar, 1.35 m above ground level.
IT I DP 570184		d0.3
IT II DP 570184		d0.3
IT III DP 570184		d0.3 in berm
IT IV DP 570184		d0.3
IT L DP 6700		d0.3
IT V DP 570184		d0.3
IT VIII DP 6700		d0.2 under fence line
IT X DP 6700		d0.4
IT X SO 7236		d0.3, 0.3m from eos
IT XV SO 7236		IT in conc d0.1 top of bank above road
PEG 1 DP 570184		d0.1 disk in conc. 0.1m NE of fence
PEG 2 DP 570184		Corner post marked with disk
PEG 7 DP 570184		Peg south side of 1/4 post
POST 10 DP 570184		Concrete Post

\*\*\* End of Report \*\*\*

Land Registration District

**Southland**

Plan Number

**570184**

Territorial Authority (the Council)

**Southland District**

Schedule of Easements			
Purpose	Shown	Servient Tenement (Burdened Land)	Dominant Tenement (Benefited Land)
Right to convey water	A	Lot 4 hereon	Lots 1 to 3, 5 & 6 hereon
			Pt Sec 9 Blk I Longwood SD (SL190/41)
			Sec 57 Blk I Longwood SD (SL8C/388)
			Pts Sec 5 Blk I Longwood SD (SL8D/49)
			Pts Sec 4 Blk I Longwood SD (SL108/202)
			Sec 56 Blk I Longwood SD (SL6D/827)
			Sec 51 Blk I Longwood SD (SLA3/927)
			Pt Sec 10 Blk I Longwood SD (SLA3/730)
			Sec 16 Blk I Longwood SD (SL9C/939)
			Lot 1 Sec 15 Blk I Longwood (Lot 1 DP Red524) (SL8A/782)
			Sec 50 Blk I Longwood SD (SLB1/571)
			Lot 1 DP 6700, Pt Lot 2 DP 6700, Sec 15 Blk XVI Longwood SD & Sec 68 Blk I Longwood SD (399715)
			Pt's Sec 1, Sec 28 & Sec 32 Blk XV Longwood SD (399713)
Lot 2 DP 463719 (614233)			

Schedule of Easements			
Purpose	Shown	Servient Tenement (Burdened Land)	Dominant Tenement (Benefited Land)
Right to convey water	B & I	Lot 1 hereon	Lots 2 to 6 hereon,
			Pt Sec 9 Blk I Longwood SD (SL190/41)
			Sec 57 Blk I Longwood SD (SL8C/388)
			Pts Sec 5 Blk I Longwood SD (SL8D/49)
			Pts Sec 4 Blk I Longwood SD (SL108/202)
			Sec 56 Blk I Longwood SD (SL6D/827)
			Sec 51 Blk I Longwood SD (SLA3/927)
			Pt Sec 10 Blk I Longwood SD (SLA3/730)
			Sec 16 Blk I Longwood SD (SL9C/939)
			Lot 1 DP Red524 (SL8A/782)
			Lot 1 Sec 15 Blk I Longwood (Lot 1 DP Red524) (SL8A/782)
			Lot 1 DP 6700, Pt Lot 2 DP 6700, Sec 15 Blk XVI Longwood SD & Sec 68 Blk I Longwood SD (399715)
Pt's Sec 1, Sec 28 & Sec 32 Blk XV Longwood SD (399713)			
Lot 2 DP 463719 (614233)			
Right to convey water	C	Pt Sec 9 Blk I Longwood SD	Lot 1 & 3 hereon
			Lot 1 DP 6700, Pt Lot 2 DP 6700, Sec 15 Blk XVI Longwood SD & Sec 68 Blk I Longwood SD (399715)
			Pt's Sec 1, Sec 28 & Sec 32 Blk XV Longwood SD (399713)
			Lot 2 DP 463719 (614233)

Schedule of Easements			
Purpose	Shown	Servient Tenement (Burdened Land)	Dominant Tenement (Benefited Land)
Right to convey water	D	Lot 1 hereon	3 hereon
			Lot 1 DP 6700, Pt Lot 2 DP 6700, Sec 15 Blk XVI Longwood SD & Sec 68 Blk I Longwood SD (399715)
			Pt's Sec 1, Sec 28 & Sec 32 Blk XV Longwood SD (399713)
			Lot 2 DP 463719 (614233)
Right to convey water	E & H	Lot 2 hereon	Lots 1 & 3 to 6 hereon
			Sec 57 Blk I Longwood SD (SL8C/388)
			Pts Sec 5 Blk I Longwood SD (SL8D/49)
			Pts Sec 4 Blk I Longwood SD (SL108/202)
			Sec 56 Blk I Longwood SD (SL6D/827)
			Sec 51 Blk I Longwood SD (SLA3/927)
			Pt Sec 10 Blk I Longwood SD (SLA3/730)
			Sec 16 Blk I Longwood SD (SL9C/939)
			Lot 1 Sec 15 Blk I Longwood (Lot 1 DP Red524) (SL8A/782)
			Sec 50 Blk I Longwood SD (SLB1/571)
			Lot 1 DP 6700, Pt Lot 2 DP 6700, Sec 15 Blk XVI Longwood SD & Sec 68 Blk I Longwood SD (399715)
			Pt's Sec 1, Sec 28 & Sec 32 Blk XV Longwood SD (399713)
			Lot 2 DP 463719 (614233)

Schedule of Easements			
Purpose	Shown	Servient Tenement (Burdened Land)	Dominant Tenement (Benefited Land)
Right to convey water	F	Sec 57 Blk I Longwood SD (SL8C/388)	Lots 1 to 6 hereon,
			Pts Sec 5 Blk I Longwood SD (SL8D/49)
			Pts Sec 4 Blk I Longwood SD (SL108/202)
			Sec 56 Blk I Longwood SD (SL6D/827)
			Sec 51 Blk I Longwood SD (SLA3/927)
			Pt Sec 10 Blk I Longwood SD (SLA3/730)
			Sec 16 Blk I Longwood SD (SL9C/939)
			Lot 1 Sec 15 Blk I Longwood (Lot 1 DP Red524) (SL8A/782)
			Sec 50 Blk I Longwood SD (SLB1/571)
			Lot 1 DP 6700, Pt Lot 2 DP 6700, Sec 15 Blk XVI Longwood SD & Sec 68 Blk I Longwood SD (399715)
			Pt's Sec 1, Sec 28 & Sec 32 Blk XV Longwood SD (399713)
Lot 2 DP 463719 (614233)			

Schedule of Easements			
Purpose	Shown	Servient Tenement (Burdened Land)	Dominant Tenement (Benefited Land)
Right to convey water	G	Pt Sec 5 Blk I Longwood SD (SL8D/49)	Lots 1 to 6 hereon,
			Pts Sec 5 Blk I Longwood SD (SL8D/49)
			Pts Sec 4 Blk I Longwood SD (SL108/202)
			Sec 56 Blk I Longwood SD (SL6D/827)
			Sec 51 Blk I Longwood SD (SLA3/927)
			Pt Sec 10 Blk I Longwood SD (SLA3/730)
			Sec 16 Blk I Longwood SD (SL9C/939)
			Lot 1 Sec 15 Blk I Longwood (Lot 1 DP Red524) (SL8A/782)
			Sec 50 Blk I Longwood SD (SLB1/571)
			Lot 1 DP 6700, Pt Lot 2 DP 6700, Sec 15 Blk XVI Longwood SD & Sec 68 Blk I Longwood SD (399715)
			Pt's Sec 1, Sec 28 & Sec 32 Blk XV Longwood SD (399713)
Lot 2 DP 463719 (614233)			

Schedule of Easements			
Purpose	Shown	Servient Tenement (Burdened Land)	Dominant Tenement (Benefited Land)
Right to convey water	K	Lot 1 hereon	Lot 1 DP 6700, Pt Lot 2 DP 6700, Sec 15 Blk XVI Longwood SD & Sec 68 Blk I Longwood SD (399715),
			Pt's Sec 1, Sec 28 & Sec 32 Blk XV Longwood SD (399713),
			Lot 2 DP 463719 (614233)
Right to store water and right to convey water	J	Lot 1 hereon	Lots 2 to 6 hereon,
			Pt Sec 9 Blk I Longwood SD (SL190/41)
			Sec 57 Blk I Longwood SD (SL8C/388)
			Pts Sec 5 Blk I Longwood SD (SL8D/49)
			Pts Sec 4 Blk I Longwood SD (SL108/202)
			Sec 56 Blk I Longwood SD (SL6D/827)
			Sec 51 Blk I Longwood SD (SLA3/927)
			Pt Sec 10 Blk I Longwood SD (SLA3/730)
			Sec 16 Blk I Longwood SD (SL9C/939)
			Lot 1 DP Red524 (SL8A/782)
			Lot 1 Sec 15 Blk I Longwood (Lot 1 DP Red524) (SL8A/782)
			Lot 1 DP 6700, Pt Lot 2 DP 6700, Sec 15 Blk XVI Longwood SD & Sec 68 Blk I Longwood SD (399715)
			Pt's Sec 1, Sec 28 & Sec 32 Blk XV Longwood SD (399713)
Lot 2 DP 463719 (614233)			

Schedule of Easements			
Purpose	Shown	Servient Tenement (Burdened Land)	Dominant Tenement (Benefited Land)
Right to convey electricity	L	Lot 4 hereon	Lots 1 to 4, 5 & 6 hereon,
			Pt Sec 9 Blk I Longwood SD (SL190/41)
			Sec 57 Blk I Longwood SD (SL8C/388)
			Pts Sec 5 Blk I Longwood SD (SL8D/49)
			Pts Sec 4 Blk I Longwood SD (SL108/202)
			Sec 56 Blk I Longwood SD (SL6D/827)
			Sec 51 Blk I Longwood SD (SLA3/927)
			Pt Sec 10 Blk I Longwood SD (SLA3/730)
			Sec 16 Blk I Longwood SD (SL9C/939)
			Lot 1 Sec 15 Blk I Longwood (Lot 1 DP Red524) (SL8A/782)
			Sec 50 Blk I Longwood SD (SLB1/571)
			Lot 1 DP 6700, Pt Lot 2 DP 6700, Sec 15 Blk XVI Longwood SD & Sec 68 Blk I Longwood SD (399715)
			Pt's Sec 1, Sec 28 & Sec 32 Blk XV Longwood SD (399713)
Lot 2 DP 463719 (614233)			



Schedule of Easements			
Purpose	Shown	Servient Tenement (Burdened Land)	Dominant Tenement (Benefited Land)
Right to convey electricity	M	Lot 5 hereon	Lots 1 to 3, 5 & 6 hereon,
			Pt Sec 9 Blk I Longwood SD (SL190/41)
			Sec 57 Blk I Longwood SD (SL8C/388)
			Pts Sec 5 Blk I Longwood SD (SL8D/49)
			Pts Sec 4 Blk I Longwood SD (SL108/202)
			Sec 56 Blk I Longwood SD (SL6D/827)
			Sec 51 Blk I Longwood SD (SLA3/927)
			Pt Sec 10 Blk I Longwood SD (SLA3/730)
			Sec 16 Blk I Longwood SD (SL9C/939)
			Lot 1 Sec 15 Blk I Longwood (Lot 1 DP Red524) (SL8A/782)
			Sec 50 Blk I Longwood SD (SLB1/571)
			Lot 1 DP 6700, Pt Lot 2 DP 6700, Sec 15 Blk XVI Longwood SD & Sec 68 Blk I Longwood SD (399715)
			Pt's Sec 1, Sec 28 & Sec 32 Blk XV Longwood SD (399713)
Lot 2 DP 463719 (614233)			

Schedule of Existing Easements in Gross			
Purpose	Shown	Servient Tenement (Burdened Land)	Created by
Right to telecommunications	X & Y	Lot 1 hereon	E.I. 8396686.2
	Z	Lot 2 hereon	

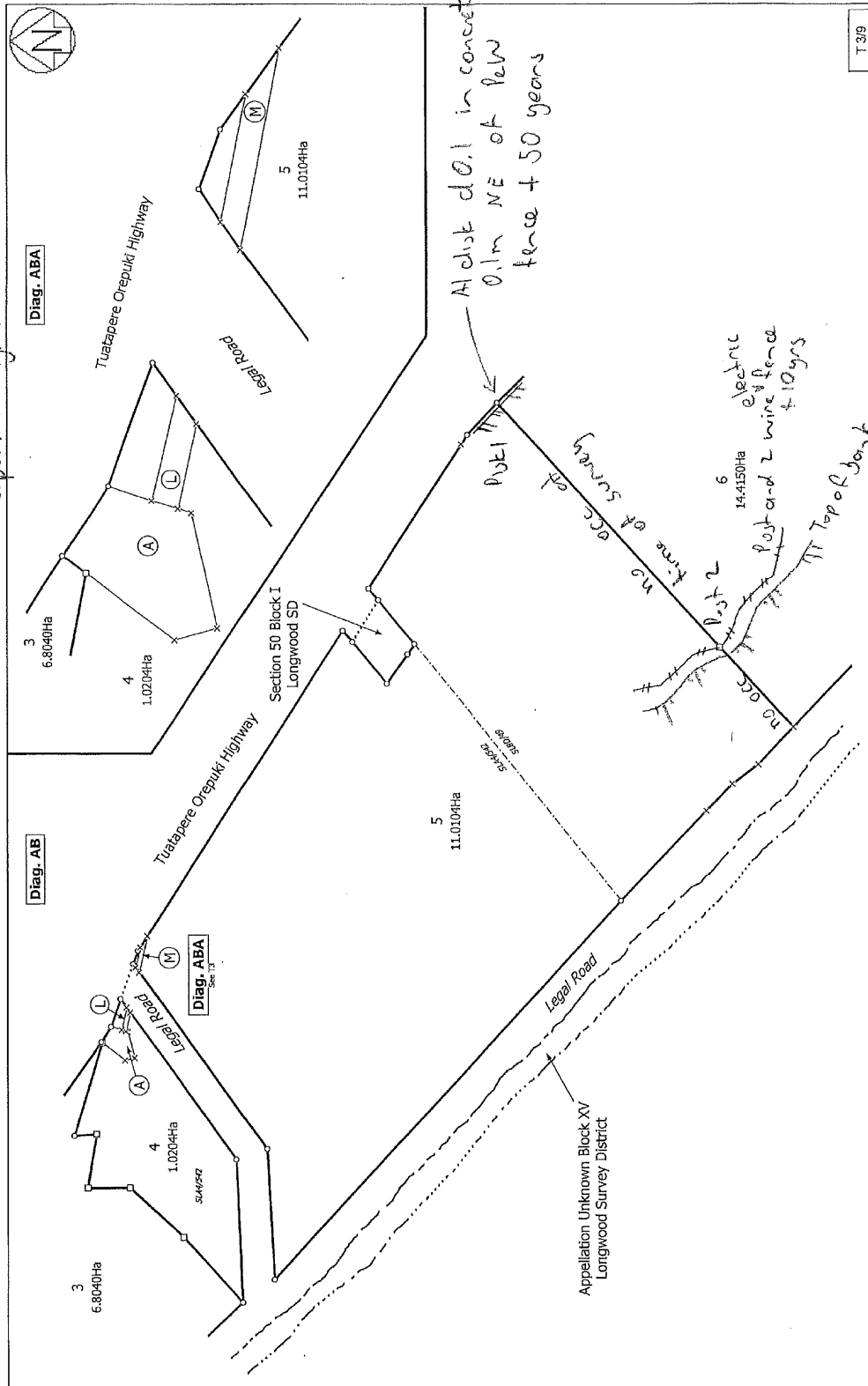
**Amalgamation Condition:**

Lot 1 & 3 hereon to be held in one Record of Title  
 Lot 4 & 5 hereon be held in one Record of Title  
 (see CSN Request #1754738)

**Consent Notice:**

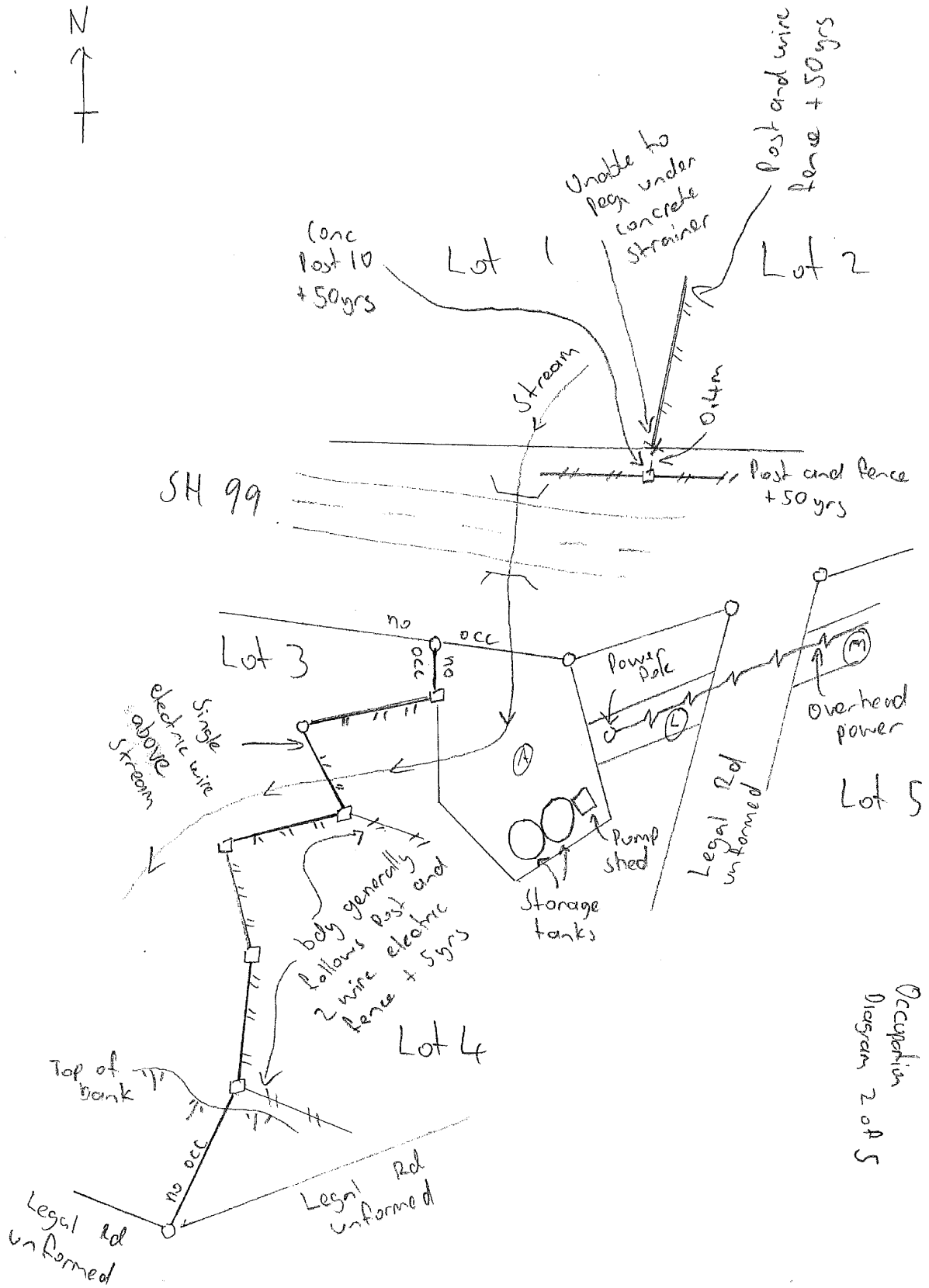
Lots 1 to 6 are subject to a consent notice

Occupation Diagram 1 of 5



T 3/9

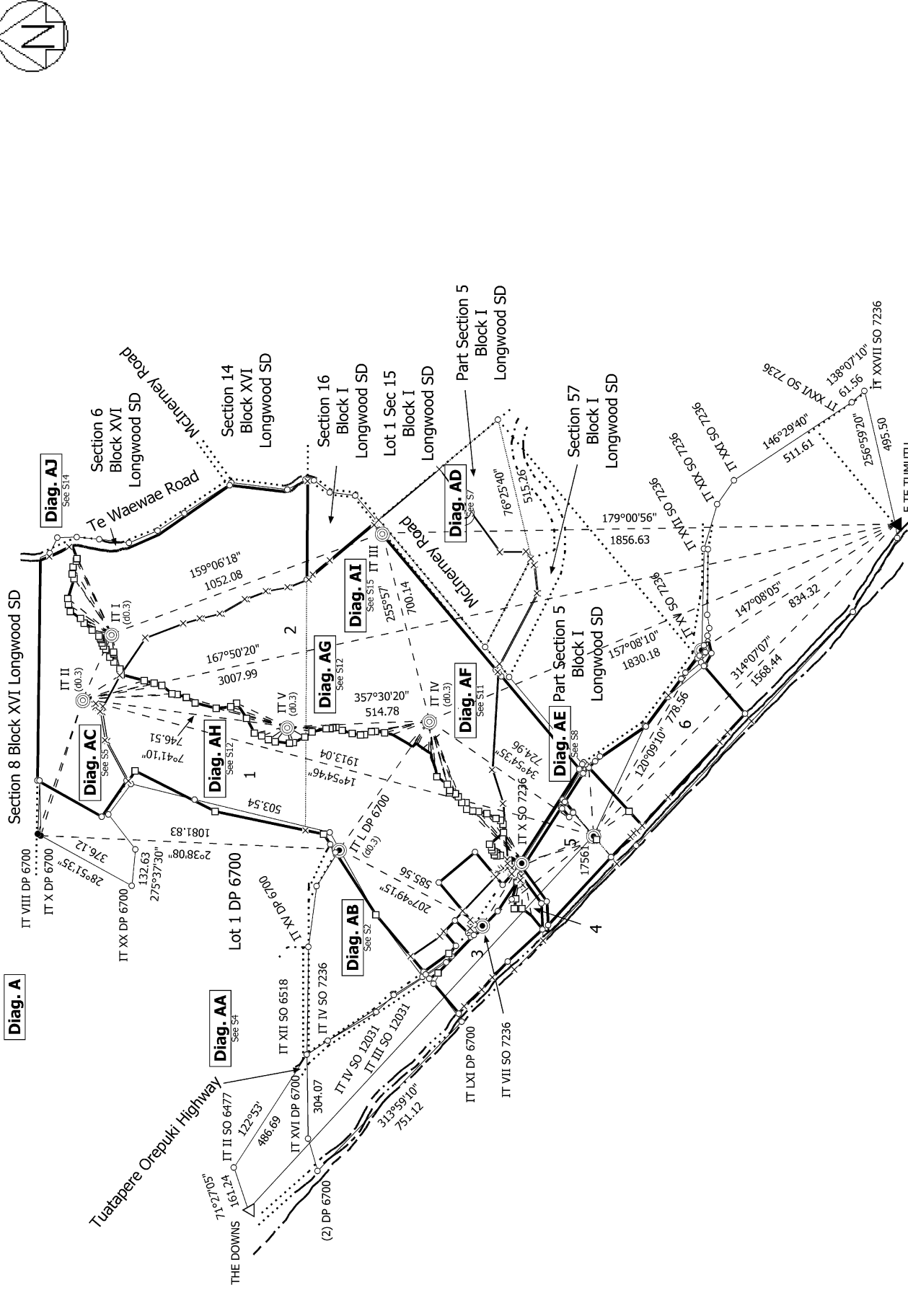
Occupation Diagram









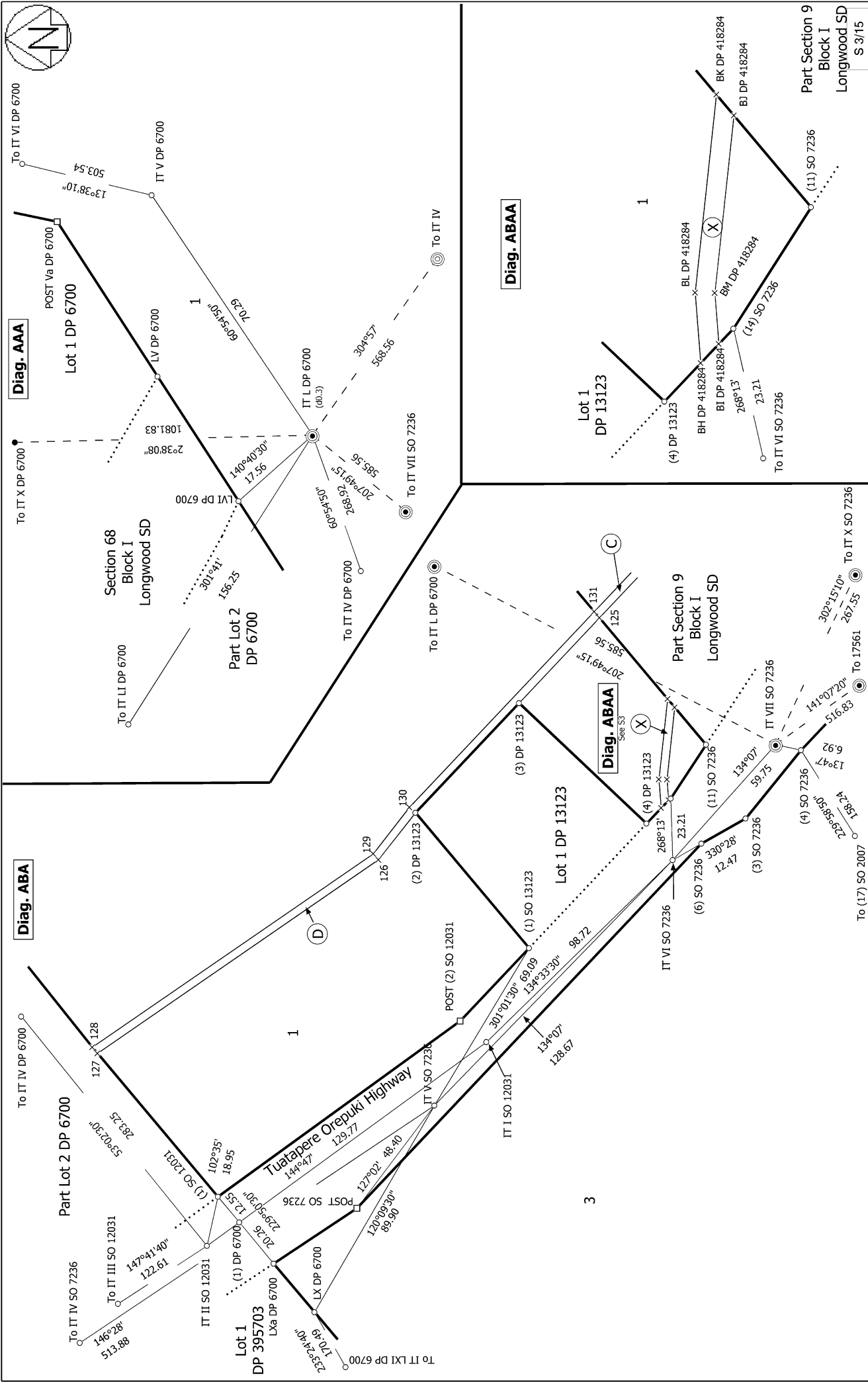


E T E TUMUTU  
 (grass rod with 3/8 Whitworth threaded hole in centre  
 of top of 0.23 m square concrete pillar, 1.35 m above ground level.)

<p>Land District: Southland</p> <p><b>Digitally Generated Plan</b></p> <p>Generated on: 07/11/2023 12:03pm Page 40 of 63</p>	<p>Lots 1 to 6 being Subdivision of Parts Lot 1 DP 14937, Part Section 4, Parts Section 5, Parts Section 6A, Section 52, 53, 69 &amp; Closed Road between Part Section 4 &amp; Section 10 &amp; intersecting Part Section 5 Block I Longwood Survey</p>	<p>Surveyor: Stephen James Fox          Firm: Southern Land Limited          Date of Survey: 5/07/2022</p>	<p>Record of Survey          LT 570184          Approved on: 7/11/2023</p>
--	---	--	--

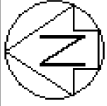






<p>Land District: Southland</p> <p><b>Digitally Generated Plan</b></p> <p>Generated on: 07/11/2023 12:03pm Page 42 of 63</p>	<p>Lots 1 to 6 being Subdivision of Parts Lot 1 DP 14937, Part Section 4, Parts Section 5, Parts Section 6A, Section 52, 53, 69 &amp; Closed Road between Part Section 4 &amp; Section 10 &amp; intersecting Part Section 5 Block I Longwood Survey</p>	<p>Surveyor: Stephen James Fox</p> <p>Firm: Southern Land Limited</p> <p>Date of Survey: 5/07/2022</p>	<p>Record of Survey</p> <p>LT 570184</p> <p>Approved on: 7/11/2023</p>
--	---	--	--

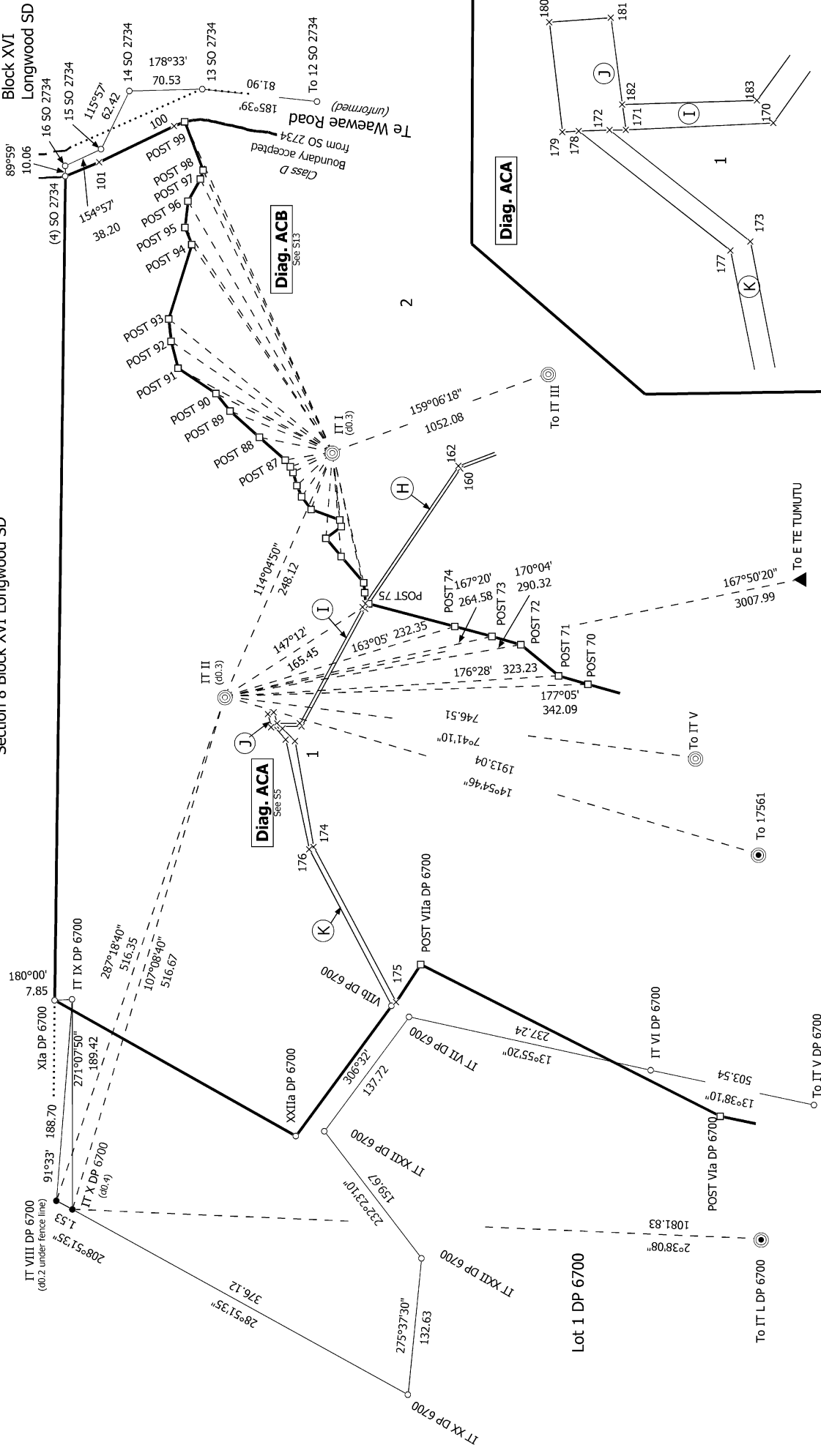




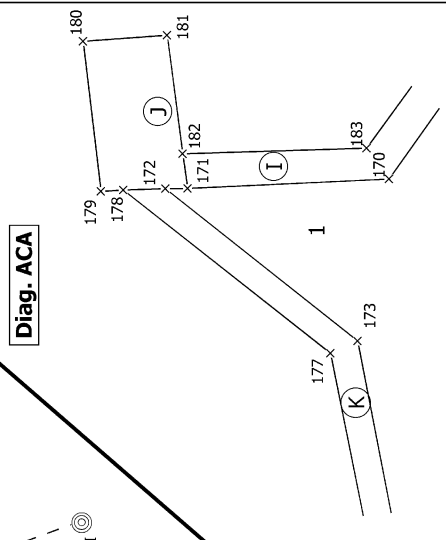
Section 8 Block XVI Longwood SD

Section 6 Block XVI Longwood SD

Diag. AC



Diag. ACA



S 5/15

Land District: Southland

Digitally Generated Plan  
Generated on: 07/11/2023 12:03:00 PM Page 44 of 63

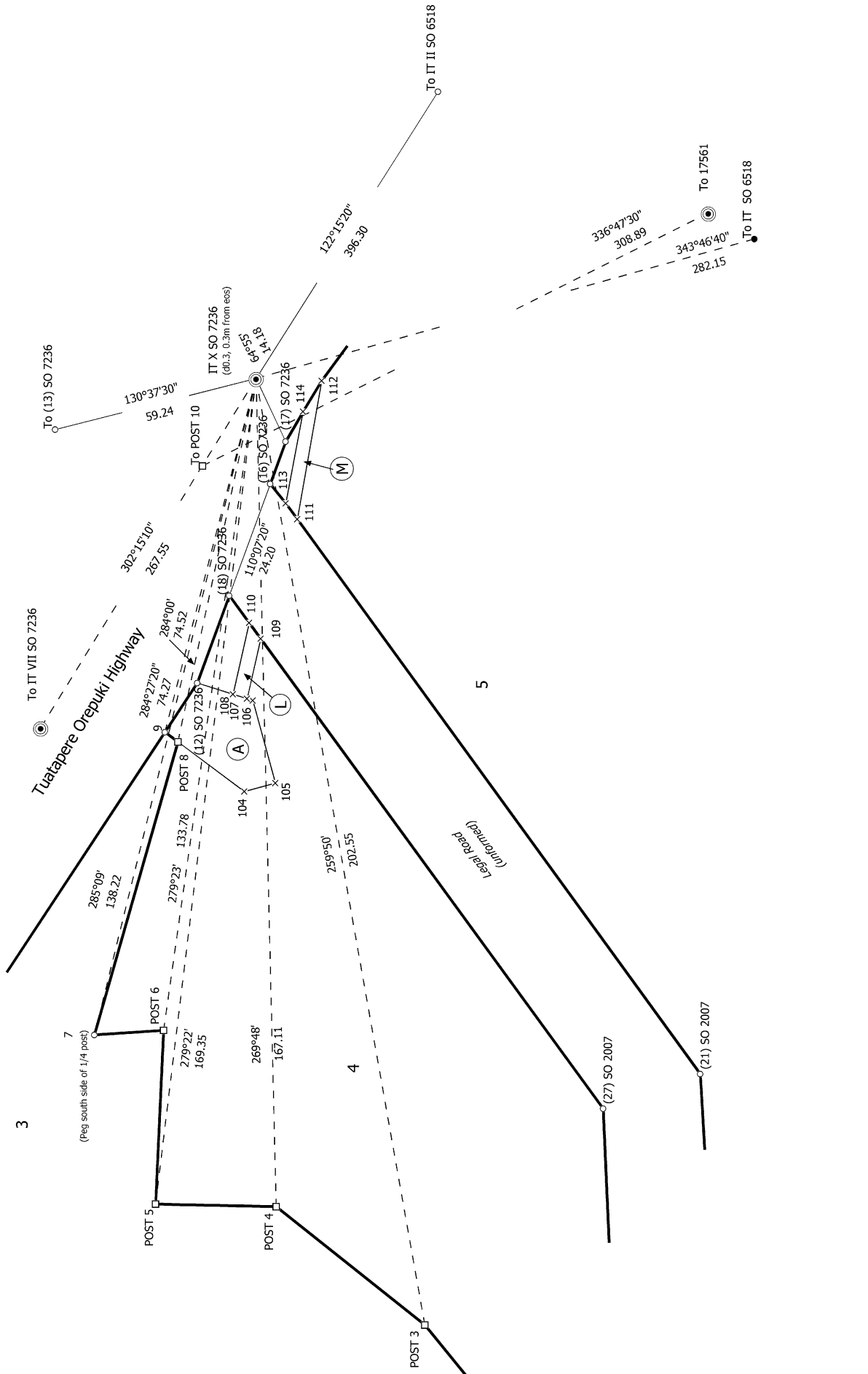
Lots 1 to 6 being Subdivision of Parts Lot 1 DP 14937, Part Section 4, Parts Section 5, Parts Section 6A, Section 52, 53, 69 & Closed Road between Part Section 4 & Section 10 & intersecting Part Section 5 Block I Longwood Survey

Surveyor: Stephen James Fox  
Firm: Southern Land Limited  
Date of Survey: 5/07/2022

Record of Survey  
LT 570184  
Approved on: 7/11/2023



Diag. ABB



S 6/15

Land District: Southland

Digitally Generated Plan  
Generated on: 07/11/2023 12:03pm Page 45 of 63

Lots 1 to 6 being Subdivision of Parts Lot 1 DP 14937, Part Section 4, Parts Section 5, Parts Section 6A, Section 52, 53, 69 & Closed Road between Part Section 4 & Section 10 & intersecting Part Section 5 Block I on road Survey

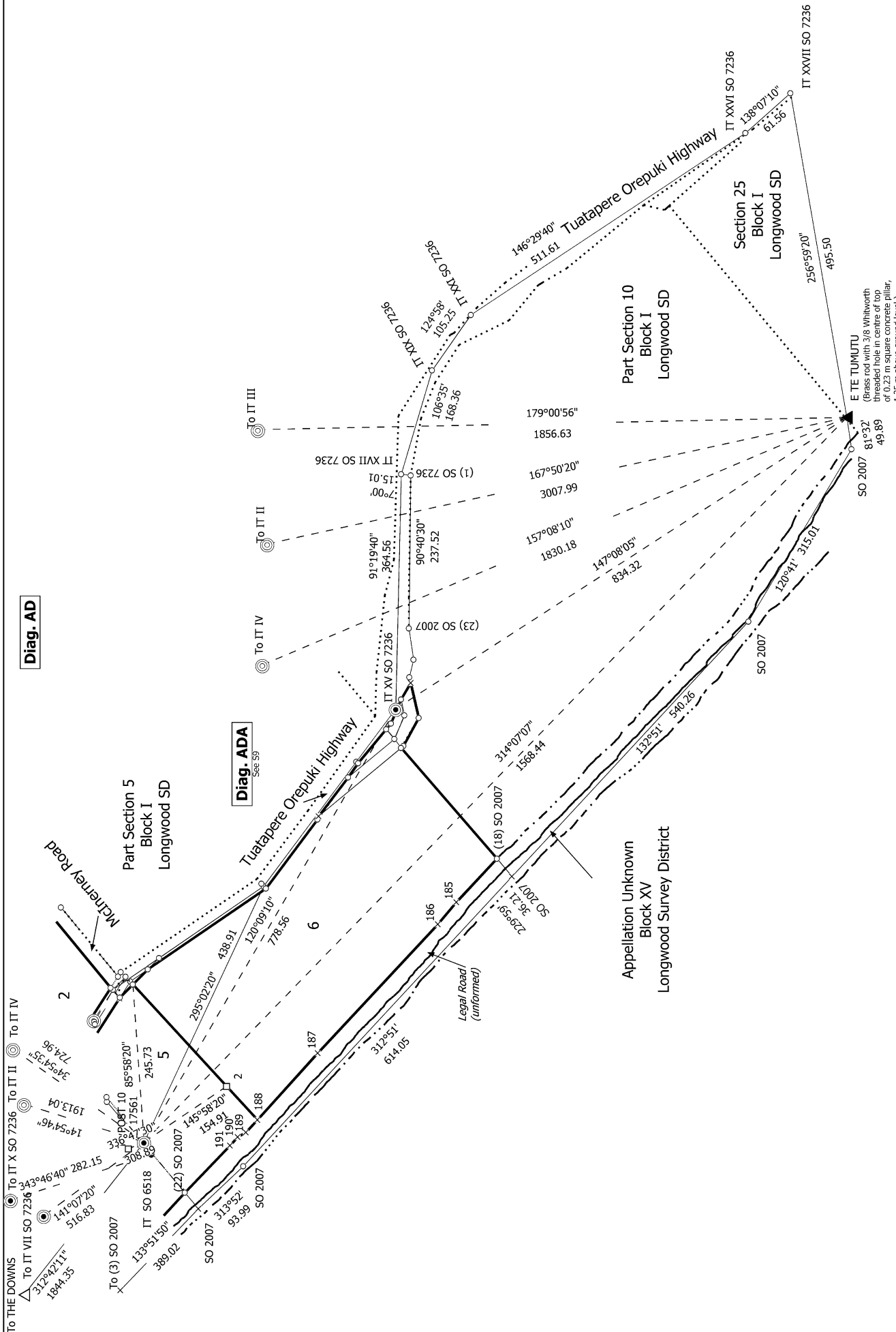
Surveyor: Stephen James Fox  
Firm: Southern Land Limited  
Date of Survey: 5/07/2022

Record of Survey  
LT 570184  
Approved on: 7/11/2023



Diag. AD

Diag. ADA  
See S9



S 7/15

Record of Survey  
LT 570184  
Approved on: 7/11/2023

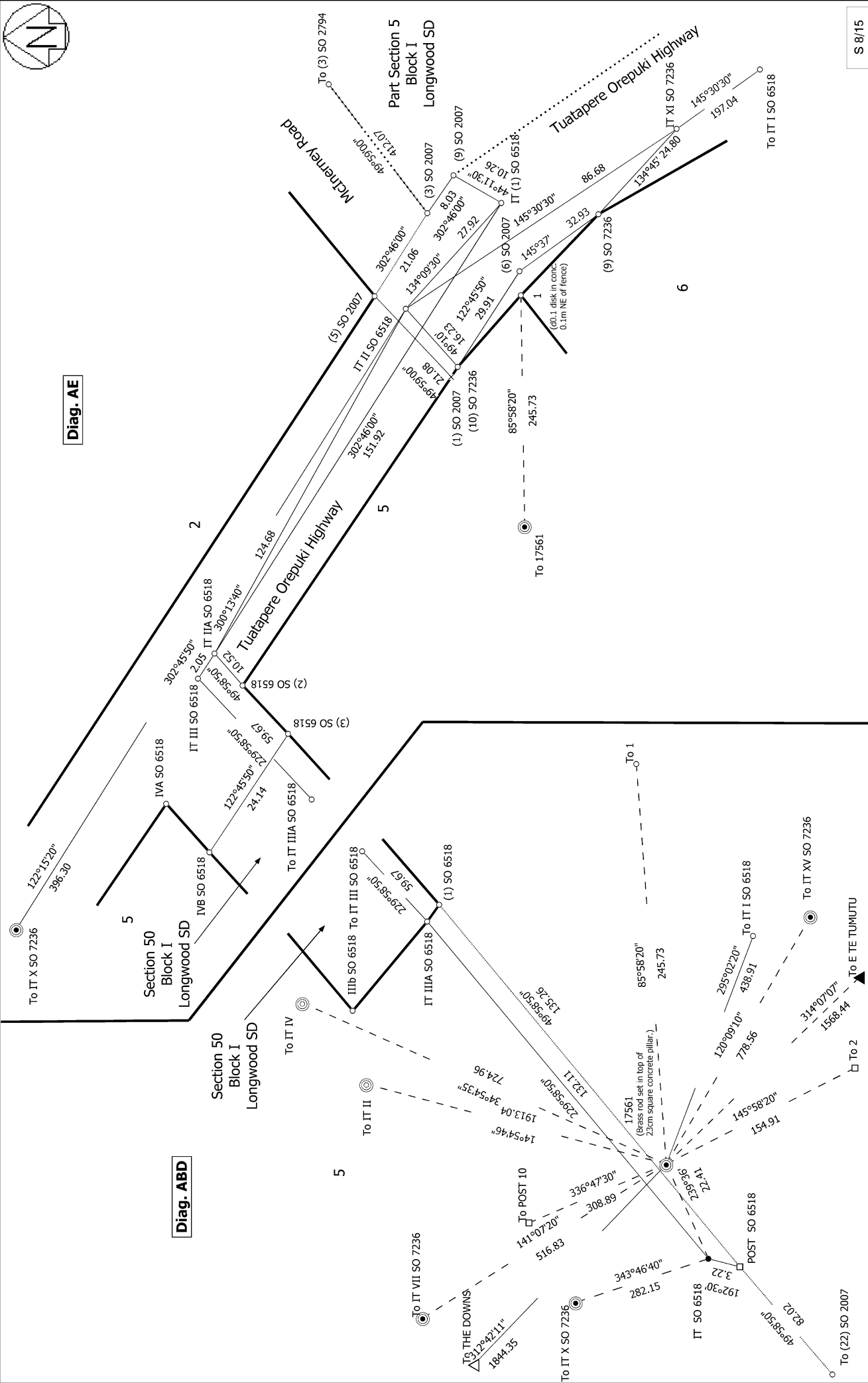
Surveyor: Stephen James Fox  
Firm: Southern Land Limited  
Date of Survey: 5/07/2022

Lots 1 to 6 being Subdivision of Parts Lot 1 DP 14937, Part Section 4, Parts Section 5, Parts Section 6A, Section 52, 53, 69 & Closed Road between Part Section 4 & Section 10 & intersecting Part Section 5 Block I Longwood Survey

Land District: Southland  
Digitally Generated Plan  
Generated on: 07/11/2023 12:03:00 PM Page 46 of 63



Diag. AE



Diag. ABD

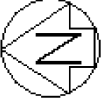
S 8/15

Record of Survey  
 LT 570184  
 Approved on: 7/11/2023

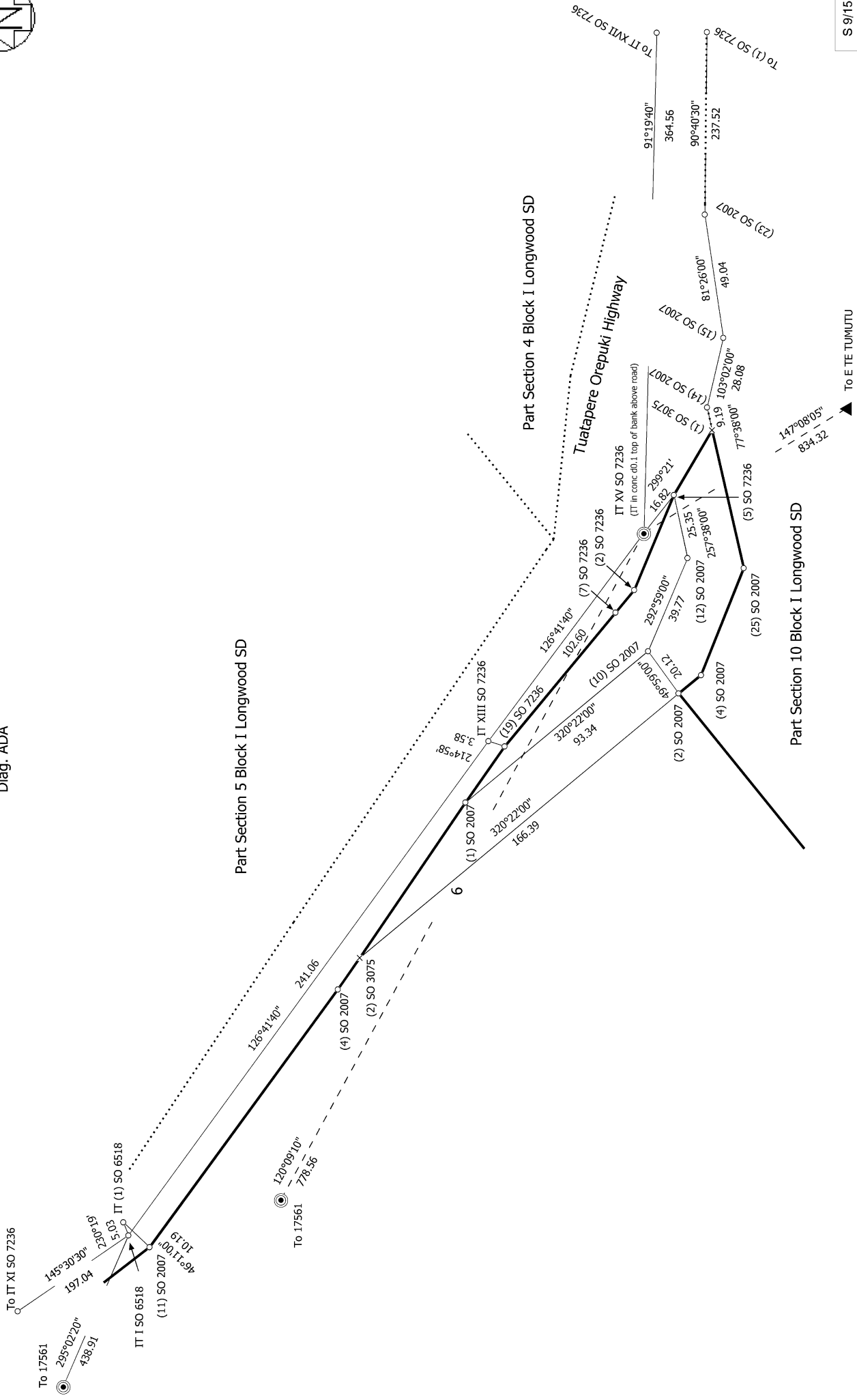
Surveyor: Stephen James Fox  
 Firm: Southern Land Limited  
 Date of Survey: 5/07/2022

Lots 1 to 6 being Subdivision of Parts Lot 1 DP 14937, Part Section 4, Parts Section 5, Parts Section 6A, Section 52, 53, 69 & Closed Road between Part Section 4 & Section 10 & intersecting Part Section 5 Block I Longwood Survey

Land District: Southland  
 Digitally Generated Plan  
 Generated on: 07/11/2023 12:03:00 Page 47 of 63



Diag. ADA



S 9/15

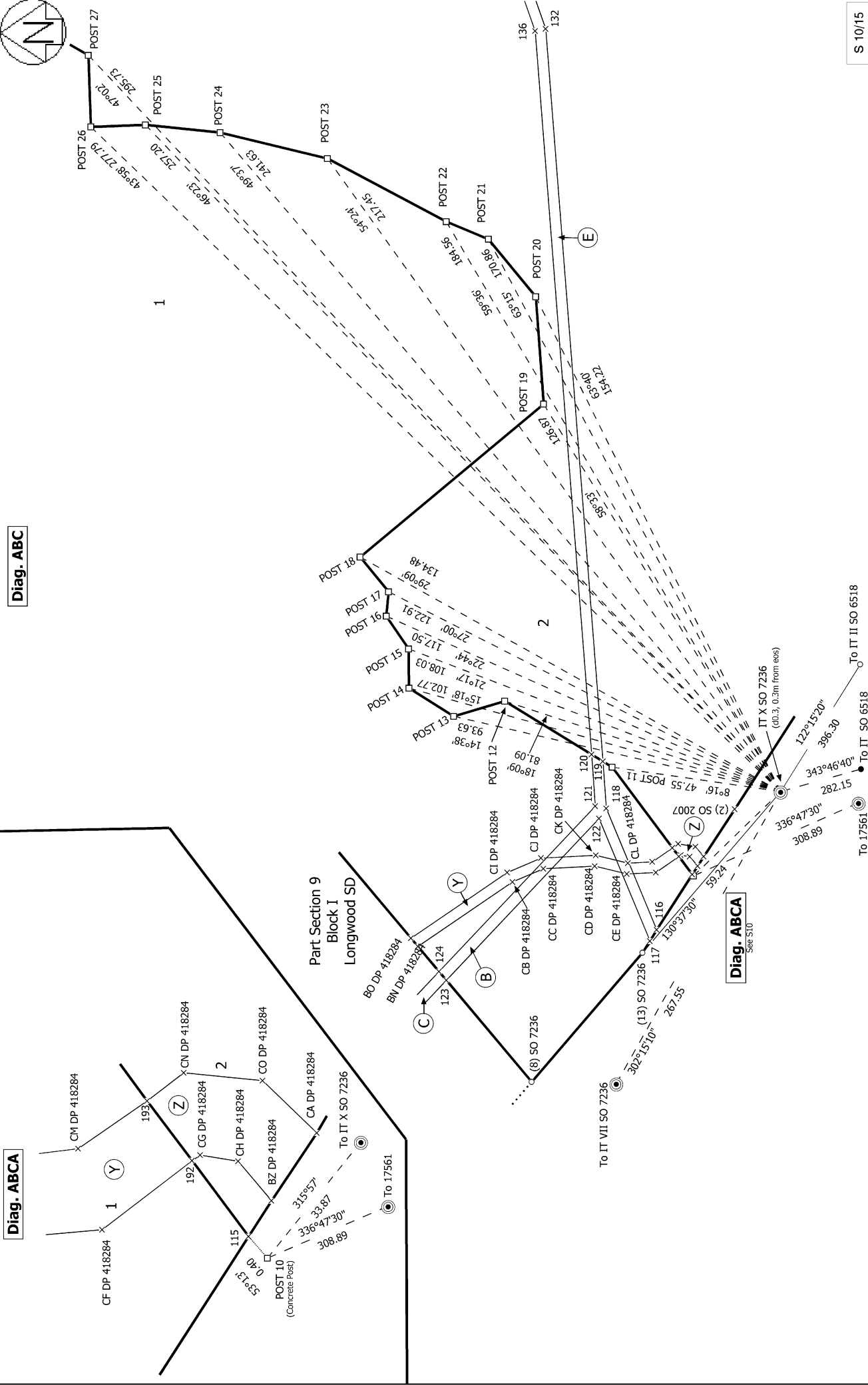
Land District: Southland  
 Digitally Generated Plan  
 Generated on: 07/11/2023 12:03:36 PM Page 48 of 63

Lots 1 to 6 being Subdivision of Parts Lot 1 DP 14937, Part Section 4, Parts Section 5, Parts Section 6A, Section 52, 53, 69 & Closed Road between Part Section 4 & Section 10 & intersecting Part Section 5 Block I Longwood Survey

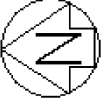
Surveyor: Stephen James Fox  
 Firm: Southern Land Limited  
 Date of Survey: 5/07/2022

Record of Survey  
 LT 570184  
 Approved on: 7/11/2023





S 10/15



S 11/15

Record of Survey  
LT 570184  
Approved on: 7/11/2023

Surveyor: Stephen James Fox  
Firm: Southern Land Limited  
Date of Survey: 5/07/2022

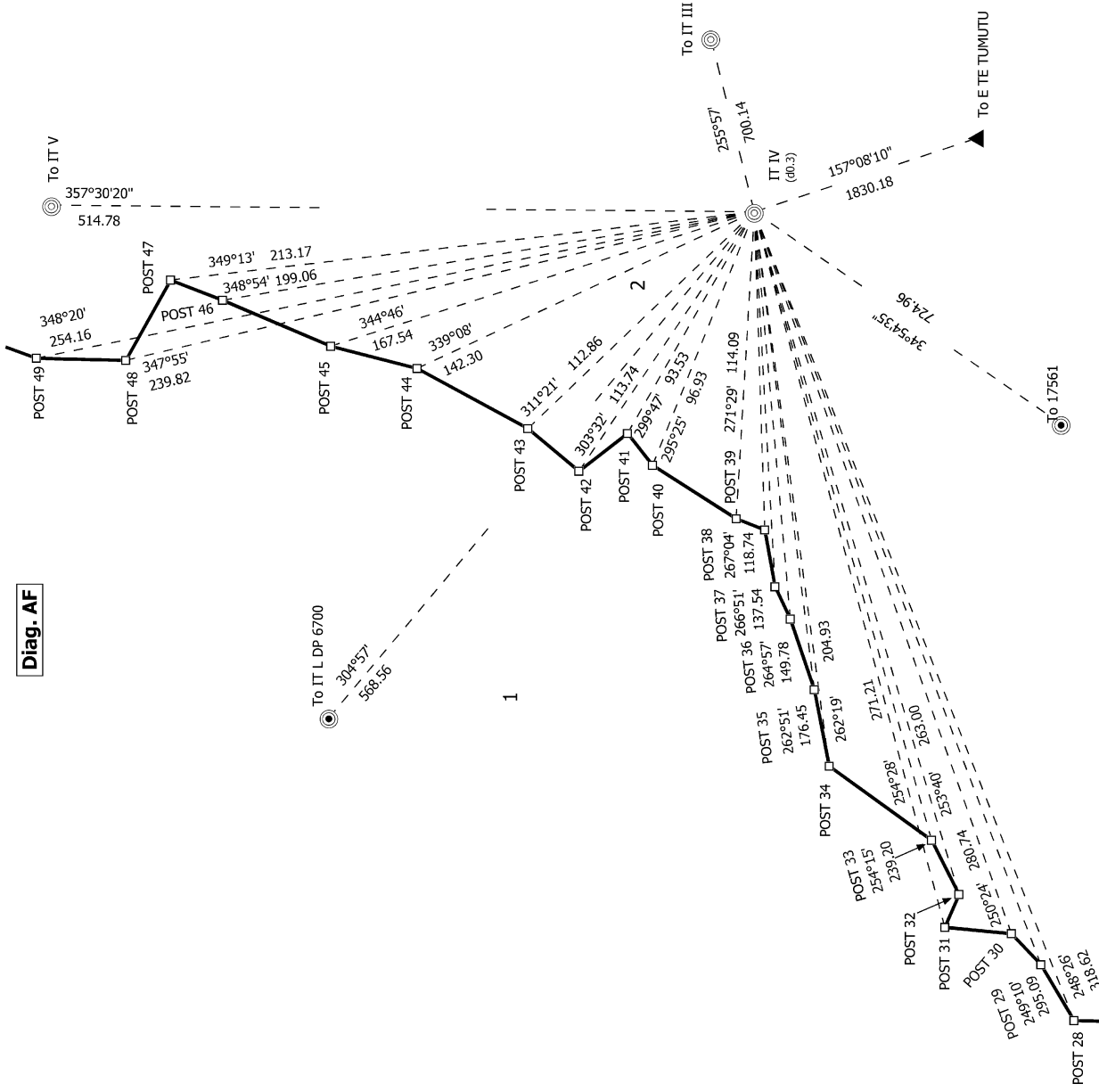
Lots 1 to 6 being Subdivision of Parts Lot 1 DP 14937, Part Section 4, Parts  
Section 5, Parts Section 6A, Section 52, 53, 69 & Closed Road between Part  
Section 4 & Section 10 & intersecting Part Section 5 Block 11 on wood Survey

Land District: Southland

Digitally Generated Plan

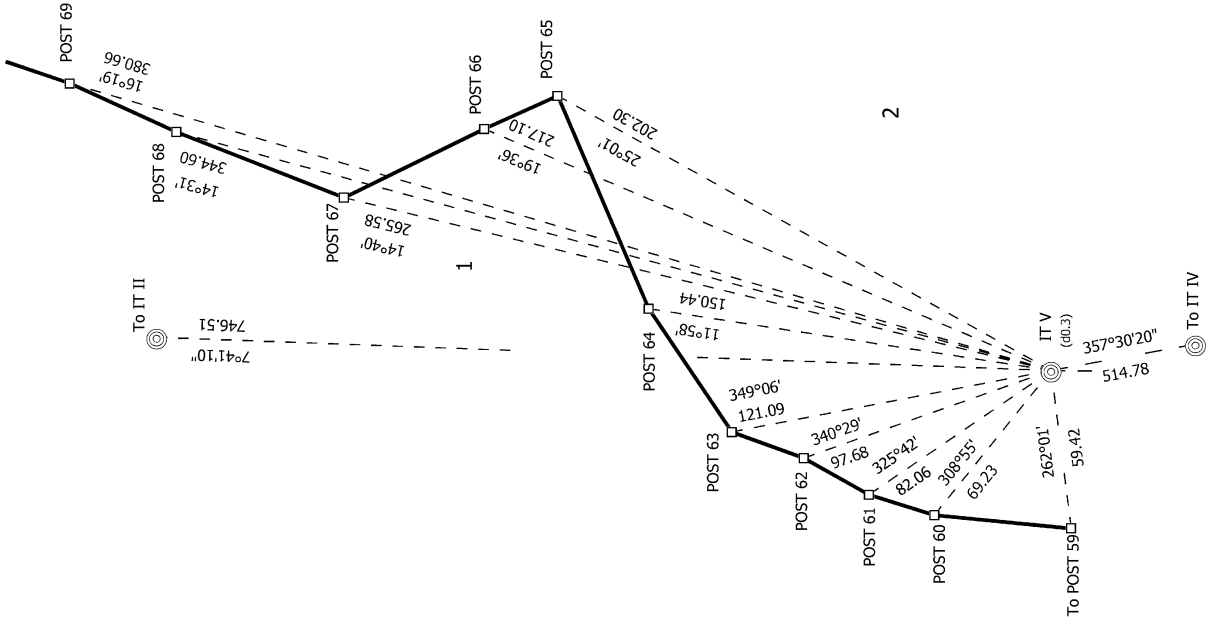
Generated on: 07/11/2023 12:03pm Page 50 of 63

Diag. AF

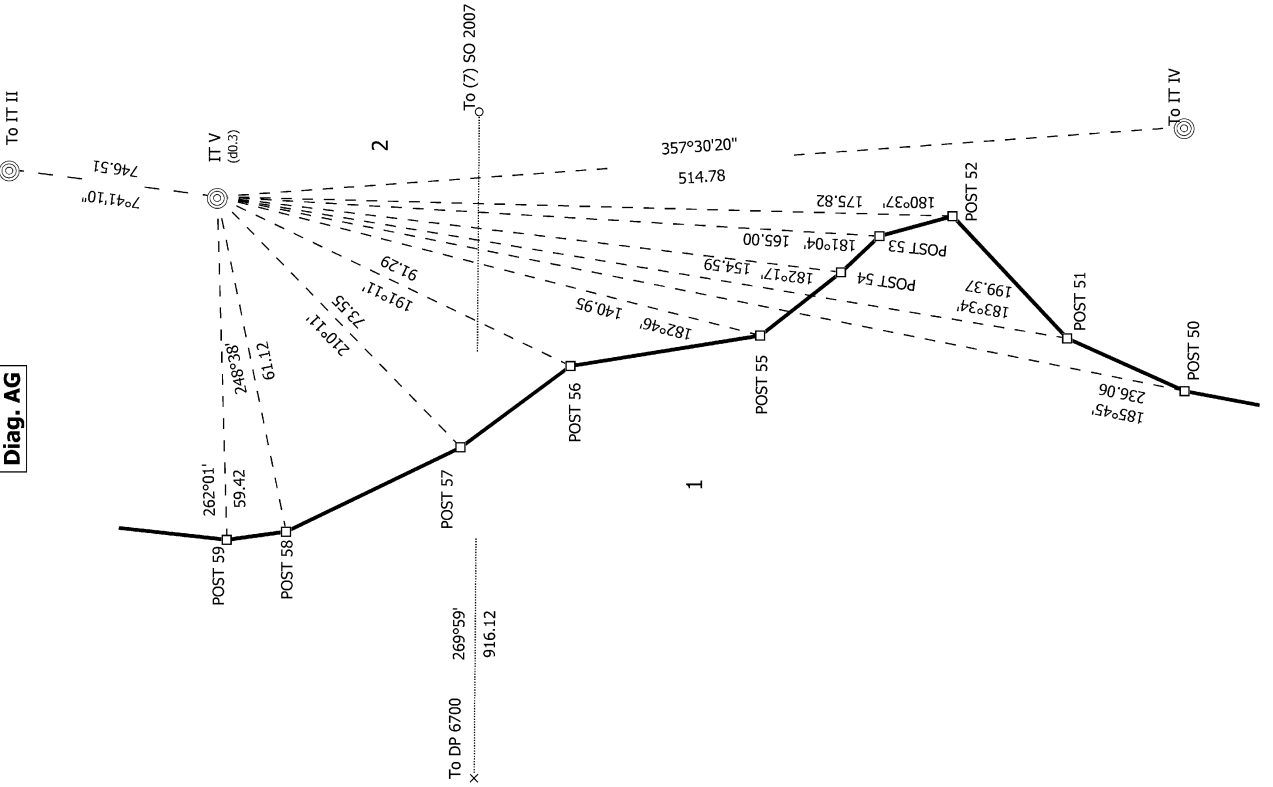




Diag. AH



Diag. AG



S 12/15

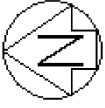
Land District: Southland

Digitally Generated Plan  
Generated on: 07/11/2023 12:03pm Page 51 of 63

Lots 1 to 6 being Subdivision of Parts Lot 1 DP 14937, Part Section 4, Parts Section 5, Parts Section 6A, Section 52, 53, 69 & Closed Road between Part Section 4 & Section 10 & intersecting Part Section 5 Block II onwood Survey

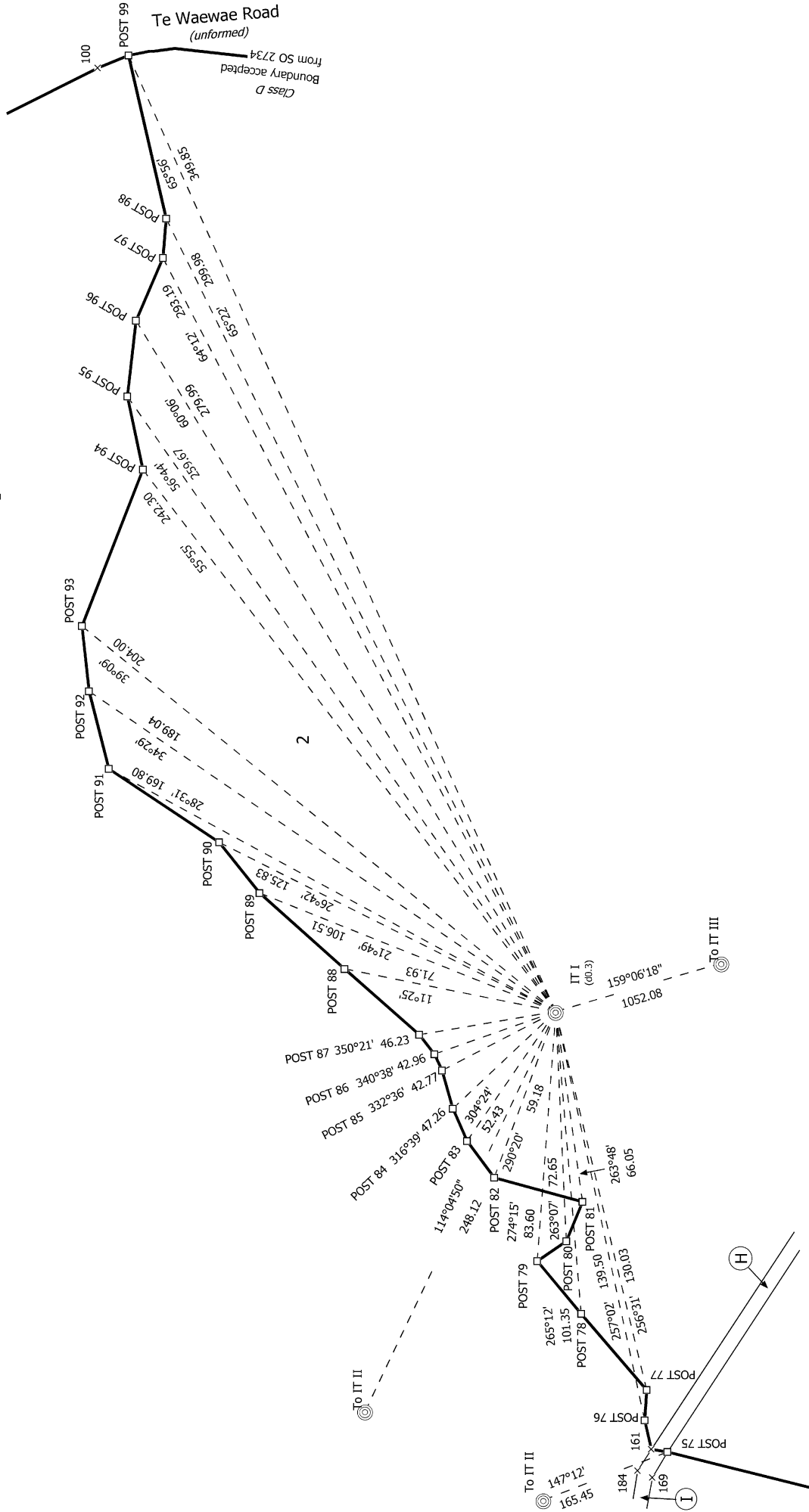
Surveyor: Stephen James Fox  
Firm: Southern Land Limited  
Date of Survey: 5/07/2022

Record of Survey  
LT 570184  
Approved on: 7/11/2023



1

Diag. ACB



S 13/15

Land District: Southland

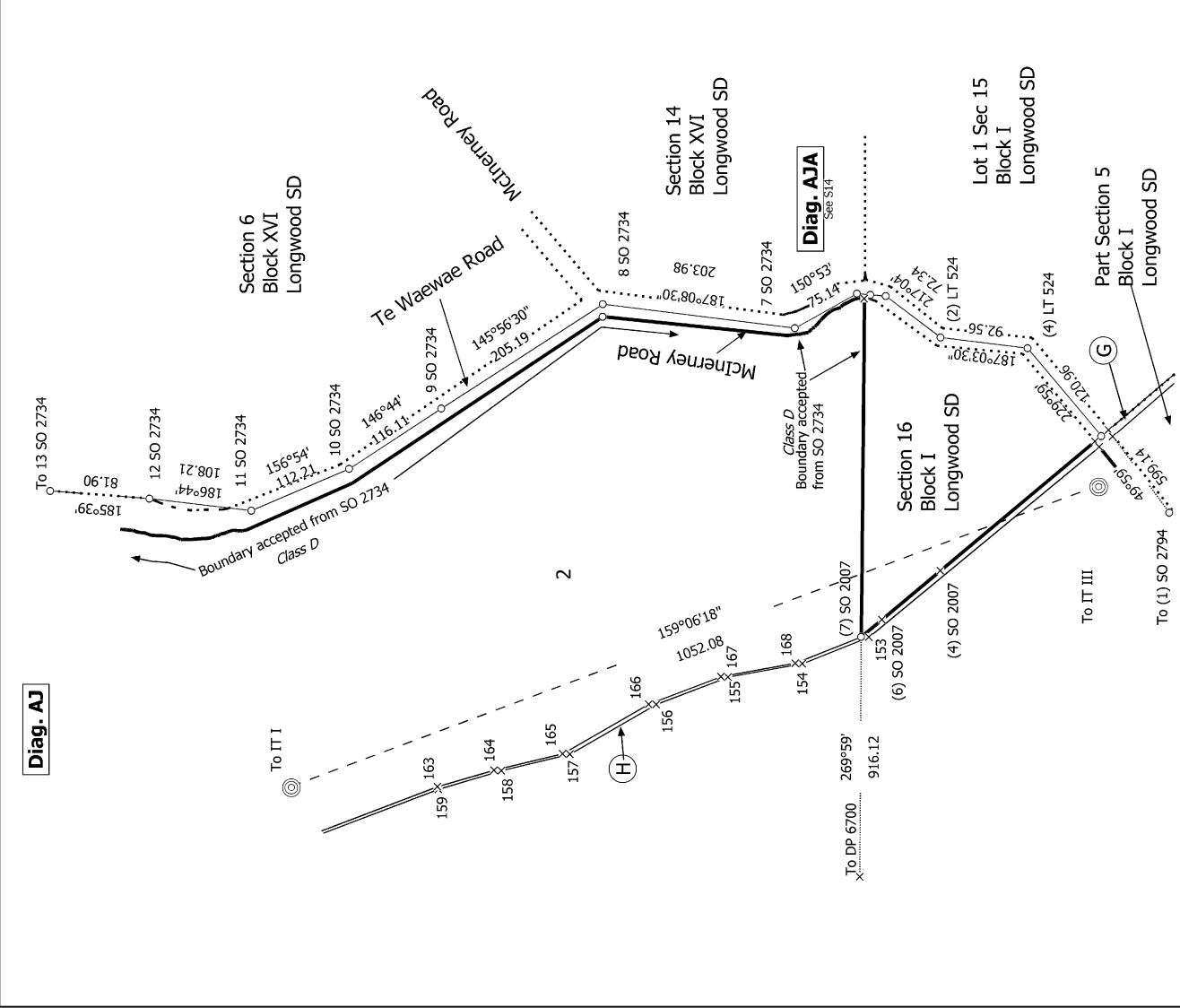
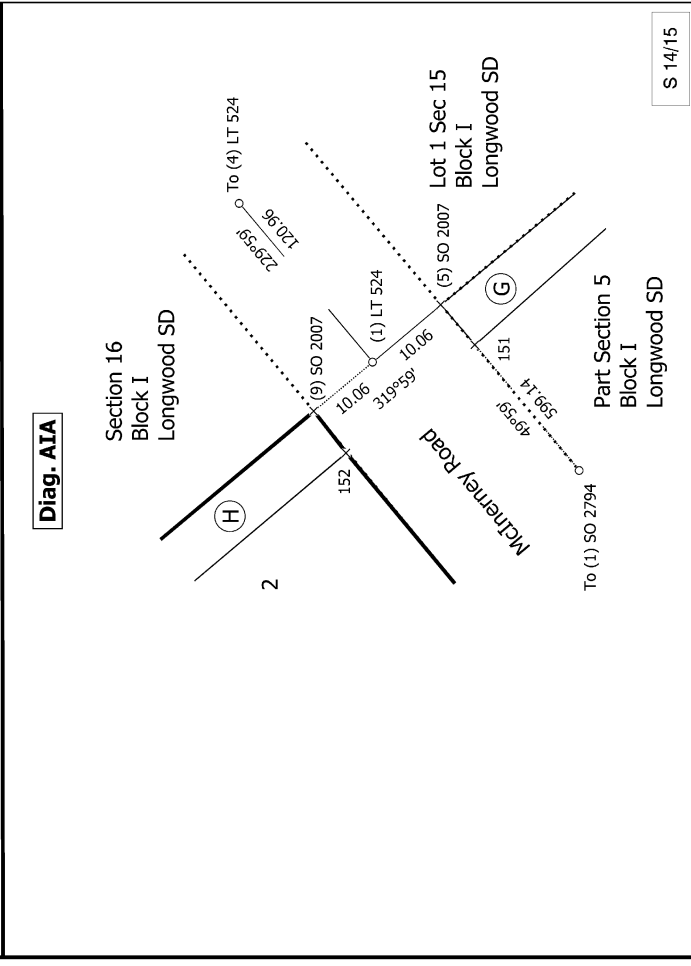
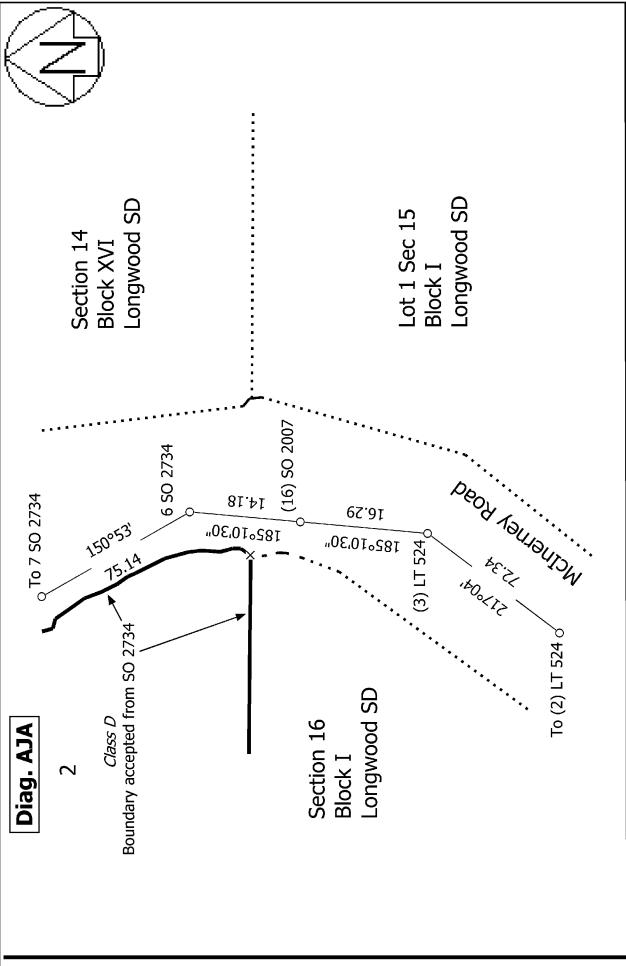
Digitally Generated Plan

Generated on: 07/11/2023 12:03pm Page 52 of 63

Lots 1 to 6 being Subdivision of Parts Lot 1 DP 14937, Part Section 4, Parts Section 5, Parts Section 6A, Section 52, 53, 69 & Closed Road between Part Section 4 & Section 10 & intersecting Part Section 5 Block I on Woodward Survey

Surveyor: Stephen James Fox  
Firm: Southern Land Limited  
Date of Survey: 5/07/2022

Record of Survey  
LT 570184  
Approved on: 7/11/2023



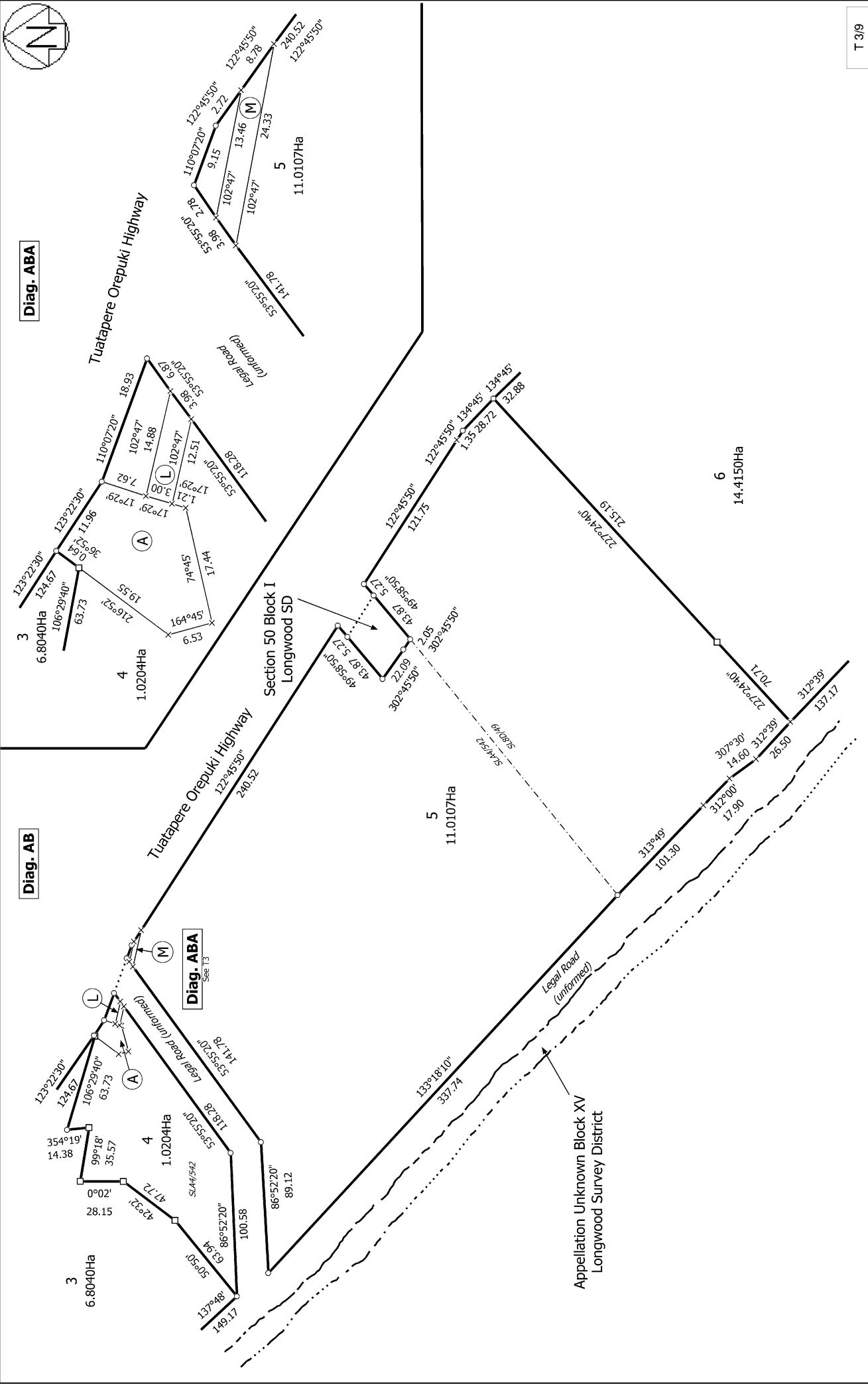
Land District: Southland	Surveyor: Stephen James Fox Firm: Southern Land Limited Date of Survey: 5/07/2022	Record of Survey LT 570184 Approved on: 7/11/2023
Lots 1 to 6 being Subdivision of Parts Lot 1 DP 14937, Part Section 4, Parts Section 5, Parts Section 6A, Section 52, 53, 69 & Closed Road between Part Section 4 & Section 10 & intersecting Part Section 5 Block I Longwood Survey		
Digitally Generated Plan Generated on: 07/11/2023 12:03pm Page 53 of 63		







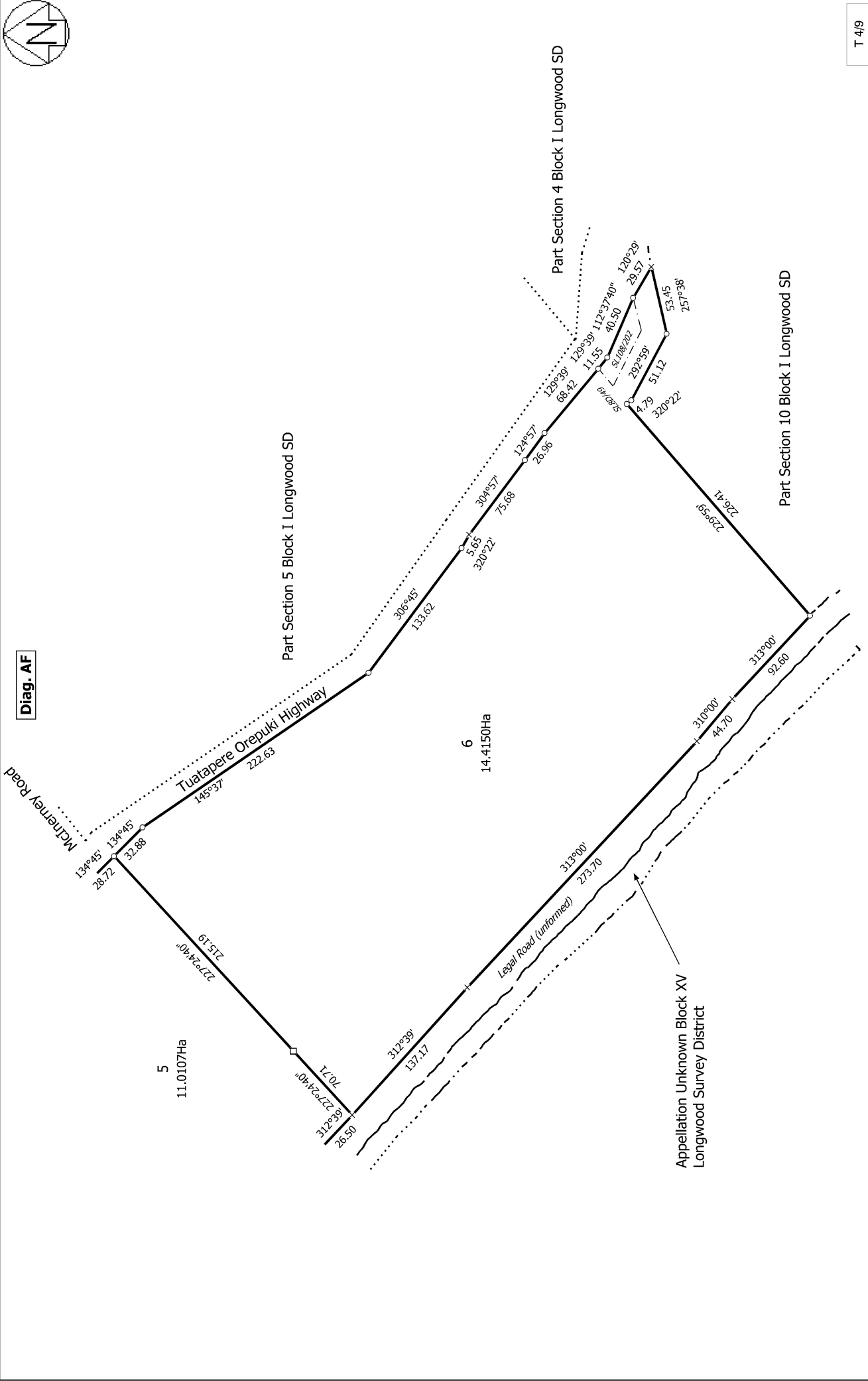




T 3/9	Record of Survey LT 570184 Approved on: 7/11/2023
Land District: Southland	Surveyor: Stephen James Fox Firm: Southern Land Limited Date of Survey: 5/07/2022
Digitally Generated Plan Generated on: 07/11/2023 12:03pm Page 57 of 63	Lots 1 to 6 being Subdivision of Parts Lot 1 DP 14937, Part Section 4, Parts Section 5, Parts Section 6A, Section 52, 53, 69 & Closed Road between Part Section 4 & Section 10 & intersecting Part Section 5 Block I Longwood Survey



Diag. AF



T 4/9

<p>Land District: Southland</p> <p><b>Digitally Generated Plan</b></p> <p>Generated on: 07/11/2023 12:03pm Page 58 of 63</p>	<p>Lots 1 to 6 being Subdivision of Parts Lot 1 DP 14937, Part Section 4, Parts Section 5, Parts Section 6A, Section 52, 53, 69 &amp; Closed Road between Part Section 4 &amp; Section 10 &amp; intersecting Part Section 5 Block I Longwood Survey</p>	<p>Surveyor: Stephen James Fox          Firm: Southern Land Limited          Date of Survey: 5/07/2022</p>	<p>Record of Survey          LT 570184          Approved on: 7/11/2023</p>
--	---	--	--



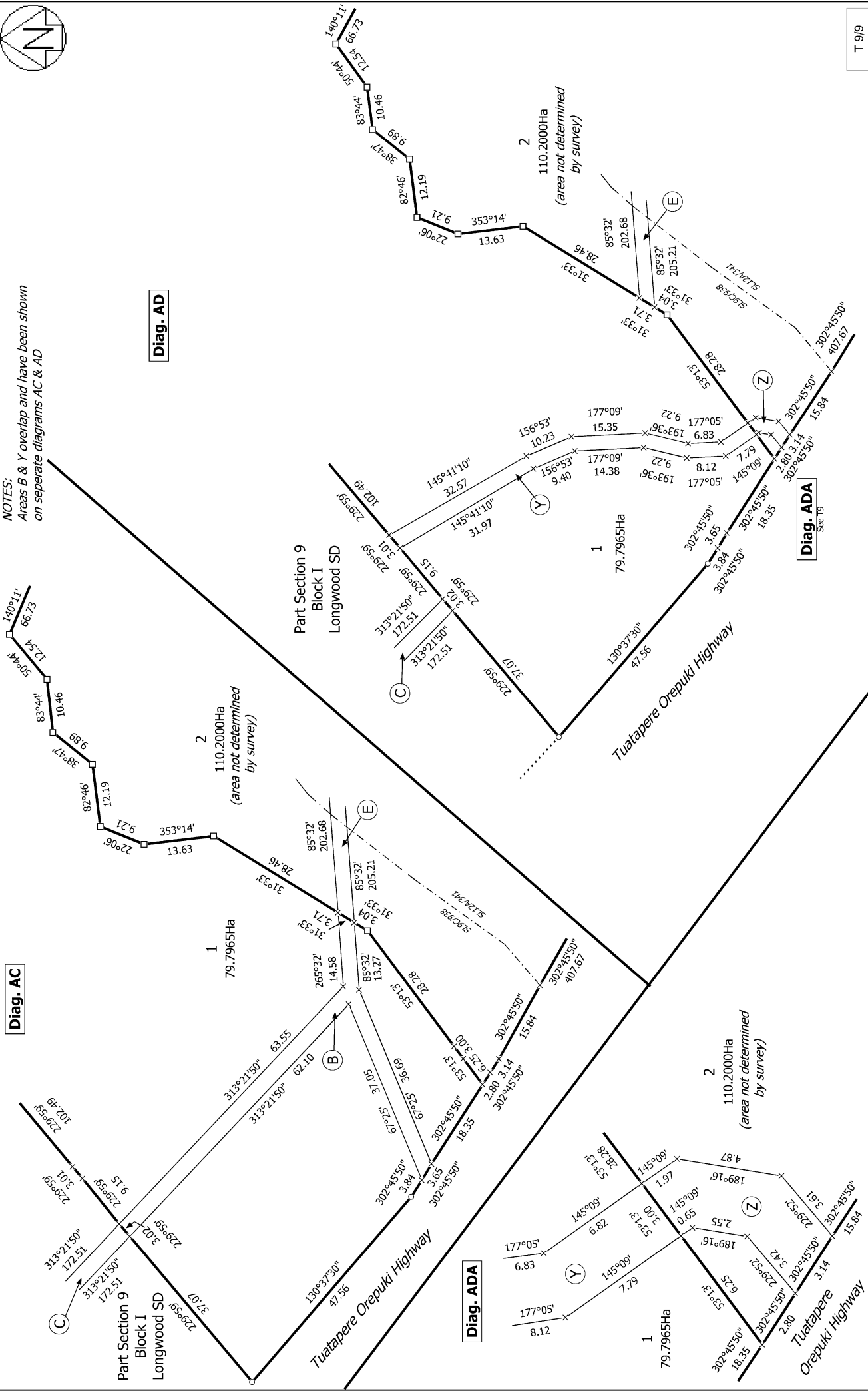








NOTES:  
Areas B & Y overlap and have been shown  
on separate diagrams AC & AD



Diag. AD

Diag. AC

Diag. ADA

T 919

Record of Survey  
LT 570184  
Approved on: 7/11/2023

Surveyor: Stephen James Fox  
Firm: Southern Land Limited  
Date of Survey: 5/07/2022

Lots 1 to 6 being Subdivision of Parts Lot 1 DP 14937, Part Section 4, Parts  
Section 5, Parts Section 6A, Section 52, 53, 69 & Closed Road between Part  
Section 4 & Section 10 & intersecting Part Section 5 Block I Longwood Survey

Land District: Southland  
Digitally Generated Plan  
Generated on: 07/11/2023 12:03:00 Page 63 of 63