



# Record of Survey - LT 568151

---

**Survey Number** LT 568151  
**Surveyor Reference** Scott\_Road\_4,Hobsonville\_Initial Stage  
**Surveyor** Robert James Mears  
**Survey Firm** Civix Limited  
**Surveyor Declaration** I Robert James Mears, being a licensed cadastral surveyor, certify that--  
 (a) this dataset provided by me and its related survey are accurate, correct and in accordance with the Cadastral Survey Act 2002 and Cadastral Survey Rules 2021; and  
 (b) the survey was undertaken by me or under my personal direction.  
 Declared on 15 Apr 2024 05:25 PM

---

## Survey Details

<b>Dataset Description</b>	Lots 1-3, 100 & 101 Being a subdivision of Lot 1 DP 71841		
<b>Purpose</b>	LT Subdivision		
<b>Status</b>	Approved as to Survey	<b>Type</b>	Survey
<b>Land District</b>	North Auckland	<b>Survey Class</b>	Class A
<b>Meridional Circuit</b>	Mount Eden 2000	<b>Vertical Datum</b>	None

---

## Survey Dates

<b>Surveyed Date</b>	01/11/2021	<b>Certified Date</b>	15/04/2024
<b>Submitted Date</b>	15/04/2024 17:25:34	<b>Survey Approval Date</b>	17/04/2024
<b>Deposit Date</b>			

---

## Referenced Surveys

Survey Number	Land District	Bearing Correction
SO 475571	North Auckland	0°00'00"
SO 49235	North Auckland	0°00'00"
DP 495850	North Auckland	0°00'00"
SO 494486	North Auckland	0°00'00"
SO 70623	North Auckland	0°00'00"
SO 30899	North Auckland	0°00'00"
DP 104222	North Auckland	0°00'00"
DP 53046	North Auckland	-0°01'00"
DP 71841	North Auckland	-0°01'00"
DP 120665	North Auckland	0°00'00"
DP 128652	North Auckland	0°00'00"
DP 46906	North Auckland	-0°01'00"
DP 308781	North Auckland	0°00'00"
DP 514312	North Auckland	0°00'00"
DP 529972	North Auckland	0°00'00"
DP 545188	North Auckland	0°00'00"
DP 548267	North Auckland	0°00'00"
DP 555397	North Auckland	0°00'00"
DP 568873	North Auckland	0°00'00"
DP 174512	North Auckland	0°00'00"



# Record of Survey - LT 568151

---

## Referenced Surveys

Survey Number	Land District	Bearing Correction
DP 505573	North Auckland	0°00'00"
DP 557858	North Auckland	

---

## Territorial Authorities

Auckland Council

---

## Comprised In

RT NA48C/786

---

## Created Parcels

Parcels	Parcel Intent	Area	RT Reference
Lot 1 Deposited Plan 568151	Fee Simple Title	3.3768 Ha	1039073
Lot 2 Deposited Plan 568151	Fee Simple Title	3.2595 Ha	1039074
Lot 3 Deposited Plan 568151	Vesting on Deposit for Local Purpose Reserve	0.6933 Ha	1039075
Lot 100 Deposited Plan 568151	Common Marine and Coastal Area (Sec 237A(1)(b) RM Act)	0.0688 Ha	
Lot 101 Deposited Plan 568151	Common Marine and Coastal Area (Sec 237A(1)(b) RM Act)	0.1113 Ha	
<b>Total Area</b>		<hr/> 7.5097 Ha	

# Mark and Vector

Survey Number DP 568151

Meridional Circuit Mount Eden 2000

From	To	Code	Bearing	Adpt Surv	Bearing Correction	Distance	Adpt Surv	Class
RM 1 SO 475571	AP 5 DP 505573	ob47	88°07'15" M			1,201.87 M		
AP 5 DP 505573	IS 4 DP 568151	ob50	235°29'20" M			916.88 M		
IS 4 DP 568151	IS 5 DP 568151	ob51	299°44'20" M			184.40 M		
IS 5 DP 568151	AP XV DP 174512	ob53	299°55'55" M			835.12 M		
AP XV DP 174512	ALP 2 DP 568151	ob56	77°32'00" M			560.33 M		
ALP 2 DP 568151	RM 1 SO 475571	ob57	216°10'00" M			184.65 M		
RM 1 SO 475571	AP XV DP 174512	ob48	273°40'10" M			439.05 M		
ALP 2 DP 568151	AP 5 DP 505573	ob58	95°43'55" M			1,097.74 M		
ALP 2 DP 568151	SM 125 SO 49235	ob59	134°10'50" M			387.45 M		
SM 125 SO 49235	AP 5 DP 505573	ob61	78°51'30" M			830.03 M		
RM 1 SO 475571	IS 1 DP 568151	ob49	213°19'00" M			67.56 M		
IS 1 DP 568151	IS 5 DP 568151	ob66	135°49'30" M			463.08 M		
IS 1 DP 568151	AP XV DP 174512	ob67	281°54'20" M			409.86 M		
IS 5 DP 568151	IB 10 DP 568151	ob54	281°32'10" M			157.86 M		
IB 10 DP 568151	IB 11 DP 568151	ob77	294°42'20" M			79.67 M		
IB 11 DP 568151	IB 12 DP 568151	ob78	281°49'40" M			43.80 M		
IB 12 DP 568151	IB 13 DP 568151	ob79	1°38'40" M			42.06 M		
IB 13 DP 568151	IB 16 DP 568151	ob82	355°46'40" M			77.10 M		
IB 16 DP 568151	IB 17 DP 568151	ob83	351°13'30" M			67.06 M		
IB 17 DP 568151	IB 18 DP 568151	ob92	351°13'30" M			22.89 M		
IB 18 DP 568151	IS 1 DP 568151	ob93	325°37'15" M			61.18 M		
IB 12 DP 568151	IB 14 DP 568151	ob80	66°22'00" M			28.31 M		
IB 14 DP 568151	IB 13 DP 568151	ob98	321°09'00" M			39.42 M		
IS 4 DP 568151	IS 3 DP 568151	ob52	303°25'40" M			118.86 M		
IS 3 DP 568151	IS 5 DP 568151	ob65	293°06'40" M			66.23 M		
IS 1 DP 568151	ALP 2 DP 568151	ob68	35°24'10" M			252.15 M		
IB 12 DP 568151	IB 15 DP 568151	ob81	348°21'00" M			78.76 M		
IB 15 DP 568151	IB 16 DP 568151	ob101	15°21'00" M			43.35 M		
IB 15 DP 568151	IB 13 DP 568151	ob102	153°59'00" M			39.05 M		
IB 14 DP 568151	IB 19 DP 568151	ob99	61°21'25" M			28.03 M		
IB 19 DP 568151	IB 20 DP 568151	ob104	88°02'55" M			18.94 M		
IB 20 DP 568151	IB 14 DP 568151	ob105	252°04'40" M			45.75 M		
SM 125 SO 49235	AP 7 DP 495850	ob62	114°41'00" A	DP 568873	0°00'00"	99.67 A	DP 568873	
AP 7 DP 495850	IS 2 SO 494486	ob0	67°27'50" A	DP 545188	0°00'00"	288.12 A	DP 545188	

# Mark and Vector

Survey Number DP 568151

Meridional Circuit Mount Eden 2000

From	To	Code	Bearing	Adpt Surv	Bearing Correction	Distance	Adpt Surv	Class
IS 2 SO 494486	AP 5 DP 495850	ob2	283°26'30"	A DP 545188	0°00'00"	166.49 A	DP 545188	
AP 5 DP 495850	AP 3 DP 495850	ob3	304°03'00"	A DP 545188	0°00'00"	149.80 A	DP 545188	
AP 3 DP 495850	AP 6 DP 514312	ob4	327°38'00"	A DP 545188	0°00'00"	340.83 A	DP 545188	
AP 6 DP 514312	SM 125 SO 49235	ob5	166°52'05"	A DP 545188	0°00'00"	492.12 A	DP 545188	
AP 7 DP 495850	AP 6 DP 495850	ob1	34°46'00"	A DP 568873	0°00'00"	116.02 A	DP 568873	
AP 6 DP 495850	AP 1 DP 555397	ob171	304°58'10"	A DP 555397	0°00'00"	91.24 A	DP 555397	
AP 1 DP 555397	AP 2 DP 495850	ob172	304°58'10"	A DP 555397	0°00'00"	71.37 A	DP 555397	
AP 2 DP 495850	AP 1 DP 495850	ob173	216°41'00"	M		103.66 M		
AP 1 DP 495850	SM 125 SO 49235	ob174	148°55'00"	M		74.44 M		
ALP 2 DP 568151	ALP 30 DP 568151	ob60	124°47'50"	M		117.87 M		
ALP 30 DP 568151	ALP 31 DP 568151	ob163	133°36'25"	M		103.25 M		
ALP 31 DP 568151	AP 1 DP 495850	ob165	134°57'55"	M		95.94 M		
ALP 31 DP 568151	IS 32 DP 568151	ob166	277°50'30"	M		94.88 M		
IS 32 DP 568151	IS 33 DP 568151	ob167	299°42'35"	M		74.37 M		
IS 33 DP 568151	ALP 34 DP 568151	ob168	310°05'20"	M		54.17 M		
ALP 34 DP 568151	ALP 2 DP 568151	ob170	27°54'45"	M		60.88 M		
AP 6 DP 514312	IT 10 DP 514312	ob6	75°16'30"	A DP 514312	0°00'00"	22.53 A	DP 514312	
IT 10 DP 514312	IT II DP 120665	ob7	212°54'00"	A DP 514312	0°00'00"	0.05 A	DP 514312	
IT II DP 120665	IS I DP 120665	ob162	219°11'40"	A DP 120665	0°00'00"	54.87 A	DP 120665	
IS I DP 120665	IT III SO 70623	ob8	220°43'20"	A DP 308781	0°00'00"	143.86 A	DP 308781	
IT III SO 70623	IT I DP 46906	ob9	220°14'30"	A DP 308781	0°00'00"	71.63 A	DP 308781	
IT I DP 46906	IT XXV SO 30899	ob10	40°44'50"	A DP 308781	0°00'00"	190.47 A	DP 308781	
IT XXV SO 30899	AP 6 DP 514312	ob11	27°04'00"	A DP 529972	0°00'00"	63.16 A	DP 529972	
SM 125 SO 49235	IT XV DP 53046	ob63	86°56'10"	A DP 71841	-0°01'00"	17.69 A	DP 71841	
IT XV DP 53046	IT XVI DP 53046	ob12	311°37'30"	A DP 71841	-0°01'00"	34.40 A	DP 71841	
IT XVI DP 53046	IT XVII DP 53046	ob13	311°37'30"	A DP 71841	-0°01'00"	88.02 A	DP 71841	
IT XVII DP 53046	IS I DP 71841	ob14	313°49'00"	A DP 71841	-0°01'00"	31.92 A	DP 71841	
IS I DP 71841	IS VI DP 46906	ob17	313°49'00"	A DP 71841	-0°01'00"	99.27 A	DP 71841	
IS VI DP 46906	IB II DP 46906	ob15	312°35'00"	A DP 53046	-0°01'00"	87.53 A	DP 53046	
IB II DP 46906	IT I DP 46906	ob16	325°29'20"	A DP 53046	-0°01'00"	56.39 A	DP 53046	
SM 125 SO 49235	IS IV DP 128652	ob64	194°04'10"	A DP 548267	0°00'00"	315.91 A	DP 548267	

# Mark and Vector

Survey Number DP 568151

Meridional Circuit Mount Eden 2000

From	To	Code	Bearing	Adpt Surv	Bearing Correction	Distance	Adpt Surv	Class
IS IV DP 128652	IS 3 DP 548267	ob33	86°07'20"	A DP 548267	0°00'00"	90.75 A	DP 548267	
IS 3 DP 548267	IS 5 DP 548267	ob27	37°15'20"	A DP 548267	0°00'00"	83.40 A	DP 548267	
IS 5 DP 548267	IS 4 DP 548267	ob28	70°09'40"	A DP 548267	0°00'00"	101.13 A	DP 548267	
IS 4 DP 548267	IT XII DP 53046	ob31	50°07'40"	A DP 548267	0°00'00"	79.31 A	DP 548267	
IT XII DP 53046	SM 125 SO 49235	ob32	304°01'55"	A DP 548267	0°00'00"	265.75 A	DP 548267	
IS IV DP 128652	IT III DP 128652	ob34	296°30'40"	A DP 128652	0°00'00"	139.56 A	DP 128652	
IT III DP 128652	IT VI DP 53046	ob19	292°47'00"	A DP 53046	-0°01'00"	31.23 A	DP 53046	
IT VI DP 53046	IS III DP 71841	ob20	279°48'30"	A DP 71841	-0°01'00"	98.71 A	DP 71841	
IS III DP 71841	IT V DP 53046	ob21	279°48'30"	A DP 71841	-0°01'00"	41.81 A	DP 71841	
IT V DP 53046	IT III DP 53046	ob22	352°21'30"	A DP 71841	-0°01'00"	139.31 A	DP 71841	
IT III DP 53046	IT II DP 53046	ob23	340°46'00"	A DP 53046	-0°01'00"	142.44 A	DP 53046	
IT II DP 53046	IT II DP 104222	ob24	329°24'00"	A DP 104222	0°00'00"	0.52 A	DP 104222	
IT II DP 104222	IS IX DP 104222	ob26	38°03'20"	A DP 104222	0°00'00"	54.81 A	DP 104222	
IS IX DP 104222	IS I DP 104222	ob29	38°03'20"	A DP 104222	0°00'00"	209.03 A	DP 104222	
IS I DP 104222	IT I DP 46906	ob30	49°29'00"	A DP 104222	0°00'00"	9.42 A	DP 104222	
IT I DP 46906	IT I DP 53046	ob25	40°02'00"	A DP 53046	-0°01'00"	52.87 A	DP 53046	
IT I DP 53046	IT V DP 46906	ob37	38°07'00"	A DP 53046	-0°01'00"	112.19 A	DP 53046	
IT V DP 46906	IS IV DP 46906	ob38	37°43'00"	A DP 46906	-0°01'00"	33.37 A	DP 46906	
IS IV DP 46906	IS I DP 104222	ob39	36°02'40"	A DP 104222	0°00'00"	65.67 A	DP 104222	
IS I DP 71841	PEG (46) DP 71841	ob18	215°51'00"	A DP 71841	-0°01'00"	5.25 A	DP 71841	
PEG (46) DP 71841	PEG (47) DP 71841	ob175	215°51'00"	A DP 71841	-0°01'00"	167.43 A	DP 71841	Class A
PEG (47) DP 71841	IT II DP 71841	ob177	215°51'00"	A DP 71841	-0°01'00"	181.96 A	DP 71841	Class A
IT II DP 71841	IB 14 DP 568151	ob178	270°57'10"	M		40.73 M		
PEG (46) DP 71841	PEG 62 DP 568151	ob176	313°40'00"	A DP 71841	-0°01'00"	99.94 C		Class A
PEG 62 DP 568151	PEG (50) DP 46906	ob124	313°40'00"	A DP 71841	-0°01'00"	87.09 C		Class A
PEG (50) DP 46906	IB II DP 46906	ob35	37°08'20"	A DP 46906	-0°01'00"	3.82 A	DP 46906	
PEG (50) DP 46906	PEG (55) DP 46906	ob36	217°08'20"	A DP 46906	-0°01'00"	48.02 A	DP 46906	Class A
PEG (55) DP 46906	PEG (56) DP 46906	ob41	308°11'00"	A DP 46906	-0°01'00"	41.74 A	DP 46906	Class A
PEG (56) DP 46906	IS IV DP 46906	ob42	281°30'00"	A DP 46906	-0°01'00"	13.90 A	DP 46906	
PEG (56) DP 46906	PEG 63 DP 568151	ob43	218°11'10"	A DP 71841	-0°01'00"	182.20 C		Class A
PEG 63 DP 568151	PEG (57) DP 71841	ob125	218°11'10"	A DP 71841	-0°01'00"	18.97 C		Class A
PEG (57) DP 71841	IT II DP 53046	ob44	293°53'00"	A DP 53046	-0°01'00"	14.15 A	DP 53046	

# Mark and Vector

Survey Number DP 568151

Meridional Circuit Mount Eden 2000

From	To	Code	Bearing	Adpt Surv	Bearing Correction	Distance	Adpt Surv	Class
IT II DP 71841	UNMK 64 DP 568151	ob179	215°51'00"	A DP 71841	-0°01'00"	5.00 C		Class A
UNMK 64 DP 568151	PEG (49) DP 71841	ob180	215°51'00"	A DP 71841	-0°01'00"	5.65 C		Class A
PEG (49) DP 71841	IS III DP 71841	ob181	215°57'00"	A DP 71841	-0°01'00"	28.97 A	DP 71841	
PEG (49) DP 71841	UNMK 58 DP 568151	ob182	215°51'00"	A DP 71841	-0°01'00"	14.61 C		Class AD
UNMK 58 DP 568151	MHWM (61) DP 71841	ob183	215°51'00"	A DP 71841	-0°01'00"	3.39 C		Class AD
MHWM (61) DP 71841	IS III DP 71841	ob184	215°56'00"	C		10.97 C		
PEG (57) DP 71841	UNMK 59 DP 568151	ob45	218°11'10"	A DP 53046	-0°01'00"	1.06 C		Class AD
UNMK 59 DP 568151	MHWM (60) DP 53046	ob46	218°11'10"	A DP 53046	-0°01'00"	5.98 C		Class AD
MHWM (60) DP 53046	IT II DP 53046	ob123	322°41'00"	C		14.17 C		
PEG 63 DP 568151	PEG 65 DP 568151	ob126	150°12'00"	C		12.36 C		Class A
PEG 65 DP 568151	PEG 103 DP 568151	ob127	106°03'00"	C		7.85 C		Class A
PEG 103 DP 568151	PEG 104 DP 568151	ob128	25°22'00"	C		2.01 C		Class A
PEG 104 DP 568151	PEG 105 DP 568151	ob129	91°58'00"	C		6.37 C		Class A
PEG 105 DP 568151	PEG 106 DP 568151	ob130	133°06'00"	C		8.20 C		Class A
PEG 106 DP 568151	PEG 107 DP 568151	ob131	189°45'00"	C		7.41 C		Class A
PEG 107 DP 568151	PEG 108 DP 568151	ob132	169°19'00"	C		11.70 C		Class A
PEG 108 DP 568151	UNMK 109 DP 568151	ob133	146°49'00"	C		20.26 C		Class A
UNMK 109 DP 568151	UNMK 110 DP 568151	ob134	184°41'00"	C		37.94 C		Class A
UNMK 110 DP 568151	UNMK 111 DP 568151	ob135	170°31'00"	C		18.51 C		Class A
UNMK 111 DP 568151	PEG 112 DP 568151	ob136	181°53'00"	C		28.28 C		Class A
PEG 112 DP 568151	PEG 113 DP 568151	ob137	146°25'00"	C		14.31 C		Class A
PEG 113 DP 568151	PEG 135 DP 568151	ob138	150°08'00"	C		17.55 C		Class A
PEG 135 DP 568151	UNMK 114 DP 568151	ob160	150°19'00"	C		7.58 C		Class A
UNMK 114 DP 568151	UNMK 115 DP 568151	ob139	158°31'00"	C		9.87 C		Class A

# Mark and Vector

Survey Number DP 568151

Meridional Circuit Mount Eden 2000

From	To	Code	Bearing	Adpt Surv	Bearing Correction	Distance	Adpt Surv	Class
UNMK 115 DP 568151	UNMK 116 DP 568151	ob140	176°40'00"	C		8.44 C		Class A
UNMK 116 DP 568151	UNMK 117 DP 568151	ob141	122°43'00"	C		3.87 C		Class A
UNMK 117 DP 568151	UNMK 118 DP 568151	ob142	167°11'00"	C		11.11 C		Class A
UNMK 118 DP 568151	UNMK 119 DP 568151	ob143	131°24'00"	C		3.93 C		Class A
UNMK 119 DP 568151	UNMK 120 DP 568151	ob144	95°35'00"	C		20.34 C		Class A
UNMK 120 DP 568151	UNMK 121 DP 568151	ob145	53°12'00"	C		4.60 C		Class A
UNMK 121 DP 568151	UNMK 122 DP 568151	ob146	106°04'00"	C		1.54 C		Class A
UNMK 122 DP 568151	UNMK 123 DP 568151	ob147	152°00'00"	C		14.08 C		Class A
UNMK 123 DP 568151	UNMK 124 DP 568151	ob148	193°13'00"	C		14.08 C		Class A
UNMK 124 DP 568151	UNMK 125 DP 568151	ob149	213°50'00"	C		4.87 C		Class A
UNMK 125 DP 568151	UNMK 126 DP 568151	ob150	266°30'00"	C		11.93 C		Class A
UNMK 126 DP 568151	UNMK 127 DP 568151	ob151	258°42'00"	C		8.72 C		Class A
UNMK 127 DP 568151	UNMK 128 DP 568151	ob152	174°10'00"	C		4.68 C		Class A
UNMK 128 DP 568151	PEG 129 DP 568151	ob153	207°33'00"	C		4.60 C		Class A
PEG 129 DP 568151	PEG 130 DP 568151	ob154	260°50'00"	C		7.51 C		Class A
PEG 130 DP 568151	PEG 131 DP 568151	ob155	172°20'00"	C		7.91 C		Class A
PEG 131 DP 568151	PEG 132 DP 568151	ob156	100°32'00"	C		13.10 C		Class A
PEG 132 DP 568151	PEG 133 DP 568151	ob157	147°13'00"	C		1.58 C		Class A
PEG 133 DP 568151	PEG 134 DP 568151	ob158	93°49'00"	C		17.94 C		Class A
PEG 134 DP 568151	UNMK 64 DP 568151	ob159	135°53'00"	C		2.73 C		Class A
IB 16 DP 568151	UNMK 40 DP 568151	ob84	202°59'00"	C		12.49 C		
IB 15 DP 568151	UNMK 36 DP 568151	ob103	96°54'00"	C		20.52 C		
IS 1 DP 568151	PEG 63 DP 568151	ob69	57°27'00"	M		16.87 M		
IS 1 DP 568151	PEG 65 DP 568151	ob70	94°38'00"	M		20.43 M		

# Mark and Vector

Survey Number DP 568151

Meridional Circuit Mount Eden 2000

From	To	Code	Bearing	Adpt Surv	Bearing Correction	Distance	Adpt Surv	Class
IS 1 DP 568151	PEG 103 DP 568151	ob71	97°48'00" M			28.16 M		
IS 1 DP 568151	PEG 104 DP 568151	ob72	93°59'00" M			28.83 M		
IS 1 DP 568151	PEG 105 DP 568151	ob73	93°37'00" M			35.20 M		
IS 1 DP 568151	PEG 106 DP 568151	ob74	100°47'00" M			41.86 M		
IS 1 DP 568151	PEG 107 DP 568151	ob75	110°47'00" M			42.64 M		
IB 18 DP 568151	PEG 108 DP 568151	ob94	17°25'00" M			25.01 M		
IB 18 DP 568151	UNMK 109 DP 568151	ob95	69°36'00" C			19.81 C		
IB 18 DP 568151	UNMK 110 DP 568151	ob96	153°24'00" C			34.56 C		
IB 18 DP 568151	UNMK 111 DP 568151	ob97	159°21'20" C			52.54 C		
IB 16 DP 568151	PEG 112 DP 568151	ob85	18°39'00" M			12.10 M		
IB 16 DP 568151	PEG 113 DP 568151	ob86	92°14'00" M			11.79 M		
IB 16 DP 568151	PEG 135 DP 568151	ob87	127°23'00" M			25.83 M		
IB 16 DP 568151	UNMK 114 DP 568151	ob88	132°31'00" C			32.94 C		
IB 16 DP 568151	UNMK 115 DP 568151	ob89	138°26'00" C			42.04 C		
IB 16 DP 568151	UNMK 116 DP 568151	ob90	144°33'00" C			48.94 C		
IB 16 DP 568151	UNMK 117 DP 568151	ob91	142°59'00" C			52.56 C		
IB 20 DP 568151	UNMK 118 DP 568151	ob106	315°37'00" C			56.95 C		
IB 20 DP 568151	UNMK 119 DP 568151	ob107	315°55'40" C			53.03 C		
IB 20 DP 568151	UNMK 120 DP 568151	ob108	335°16'00" C			39.77 C		
IB 20 DP 568151	UNMK 121 DP 568151	ob109	341°34'00" C			40.98 C		
IB 20 DP 568151	UNMK 122 DP 568151	ob110	343°23'00" C			40.13 C		
IB 20 DP 568151	UNMK 123 DP 568151	ob111	349°24'00" C			26.47 C		
IB 20 DP 568151	UNMK 124 DP 568151	ob112	326°42'00" C			14.73 C		
IB 20 DP 568151	UNMK 125 DP 568151	ob113	307°26'00" C			13.60 C		



# Mark and Vector

Survey Number DP 568151

Meridional Circuit Mount Eden 2000

From	To	Code	Bearing	Adpt Surv	Bearing Correction	Distance	Adpt Surv	Class
IB 20 DP 568151	UNMK 126 DP 568151	ob114	288°22'00"	C		23.93 C		
IB 20 DP 568151	UNMK 127 DP 568151	ob115	280°34'00"	C		31.80 C		
IB 20 DP 568151	UNMK 128 DP 568151	ob116	272°11'00"	C		30.81 C		
IB 20 DP 568151	PEG 129 DP 568151	ob117	264°58'00"	M		33.04 M		
IB 20 DP 568151	PEG 130 DP 568151	ob118	264°12'00"	M		40.53 M		
IB 20 DP 568151	PEG 131 DP 568151	ob119	253°06'00"	M		41.04 M		
IB 20 DP 568151	PEG 132 DP 568151	ob120	241°30'00"	M		30.03 M		
IB 20 DP 568151	PEG 134 DP 568151	ob121	204°22'00"	M		18.50 M		
PEG 135 DP 568151	PEG 62 DP 568151	ob161	35°10'00"	C		317.59 C		Class A
ALP 30 DP 568151	PEG 62 DP 568151	ob164	165°18'00"	M		34.83 M		
IB 14 DP 568151	PEG 133 DP 568151	ob100	95°01'00"	M		18.06 M		
IB 20 DP 568151	UNMK 64 DP 568151	ob122	196°57'00"	C		19.67 C		
IS IV DP 46906	IT III DP 46906	ob40	125°24'00"	A	DP 46906	-0°01'00"	54.32 A	DP 46906
IT III DP 46906	PEG (55) DP 46906	ob185	37°08'20"	A	DP 46906	-0°01'00"	3.62 A	DP 46906
IS 33 DP 568151	PEG 1015 DP 568151	ob169	4°08'30"	M		9.66 M		
PEG 1015 DP 568151	PEG (55) DP 46906	ob186	196°52'00"	C		0.06 C		
IS 5 DP 568151	IS IV DP 128652	ob55	147°47'25"	M		45.89 M		
IS 1 DP 568151	PEG 1017 DP 568151	ob76	156°30'00"	M		6.24 M		
PEG 1017 DP 568151	PEG (57) DP 71841	ob187	172°02'00"	C		0.10 C		

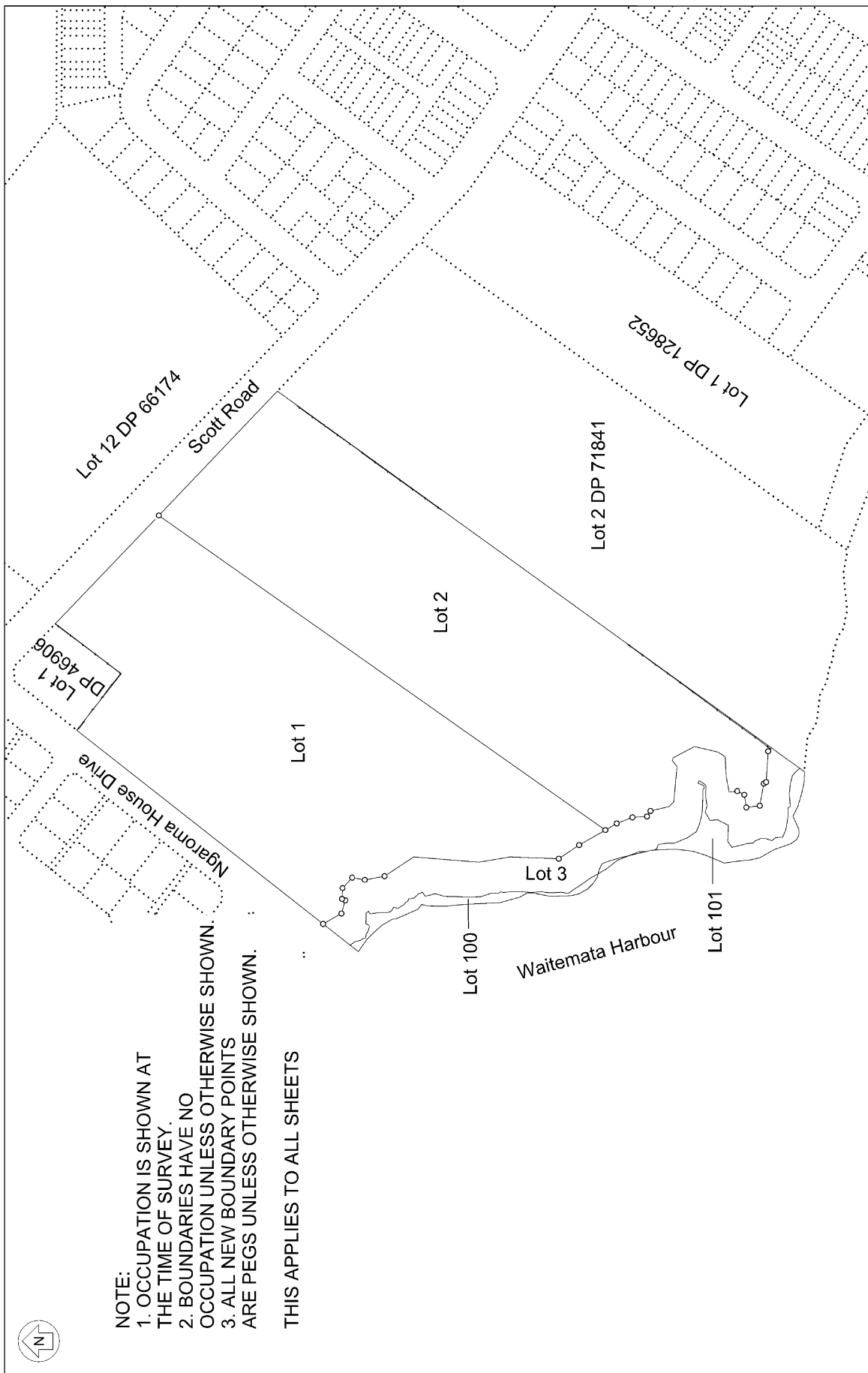
Mark Name	Mark Condition	Description
ALP 2 DP 568151		Aluminum pin flush in concrete kerb
ALP 30 DP 568151		Aluminum pin flush in concrete footpath
ALP 31 DP 568151		Aluminum pin flush in concrete footpath
ALP 34 DP 568151		Aluminum pin flush in concrete footpath
AP 1 DP 495850		Aluminum pin in concrete channel
AP 3 DP 495850		Aluminium pin in concrete footpath
AP 5 DP 495850		Aluminium pin in concrete channel

# Mark and Vector

**Survey Number** DP 568151  
**Meridional Circuit** Mount Eden 2000

Mark Name	Mark Condition	Description
AP 5 DP 505573		Aluminum pin in concrete channel
AP 6 DP 514312		In path
AP 7 DP 495850		Aluminium pin in concrete channel
IB 14 DP 568151		Iron bar buried 0.3m
IB 16 DP 568151		Iron bar buried 0.3m
IB 17 DP 568151		Iron bar buried 0.3m
IB 18 DP 568151		Iron bar buried 0.3m
IB 19 DP 568151		Iron bar buried 0.3m
IB 20 DP 568151		Iron bar buried 0.3m
IS 1 DP 568151		Iron bar buried 0.3m
IS 2 SO 494486		BURRIED 250mm DEEP
IS 3 DP 568151		Iron bar buried 0.3m
IS 4 DP 568151		Iron bar buried 0.3m
IS 5 DP 568151		Iron bar buried 0.3m
IT 10 DP 514312		IT in grass verge
IT II DP 71841		Iron tube buried 0.5m
IT III SO 70623		IT in grass berm
IT XII DP 53046		IT in grass berm
PEG 1015 DP 568151		Peg (55) DP 46906 disturbed and removed
PEG 1017 DP 568151		Peg (57) DP 71841 disturbed and removed
RM 1 SO 475571		BP flush in channel
SM 125 SO 49235		N/A

**\*\*\* End of Report \*\*\***



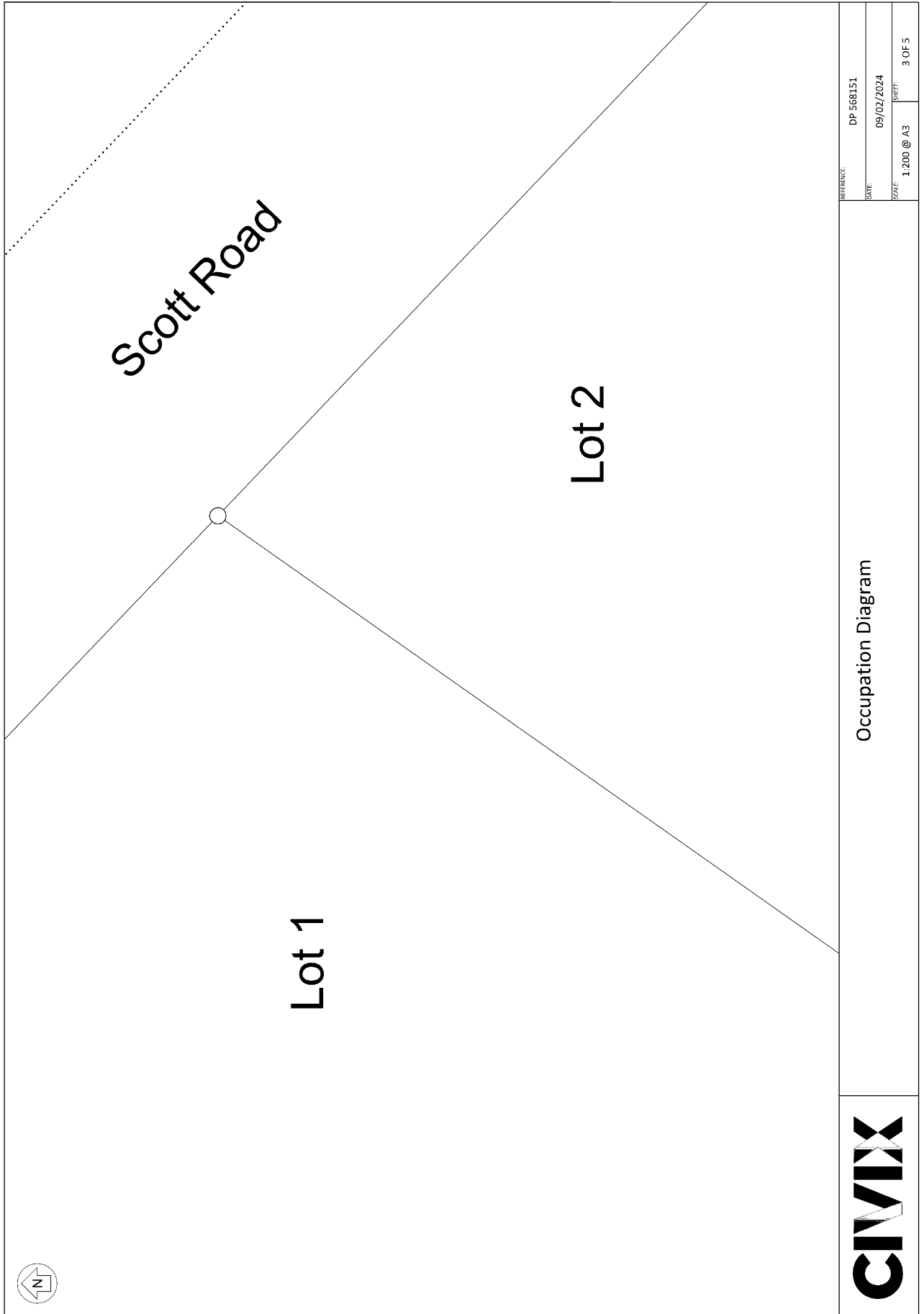
NOTE:  
 1. OCCUPATION IS SHOWN AT THE TIME OF SURVEY.  
 2. BOUNDARIES HAVE NO OCCUPATION UNLESS OTHERWISE SHOWN.  
 3. ALL NEW BOUNDARY POINTS ARE PEGS UNLESS OTHERWISE SHOWN.

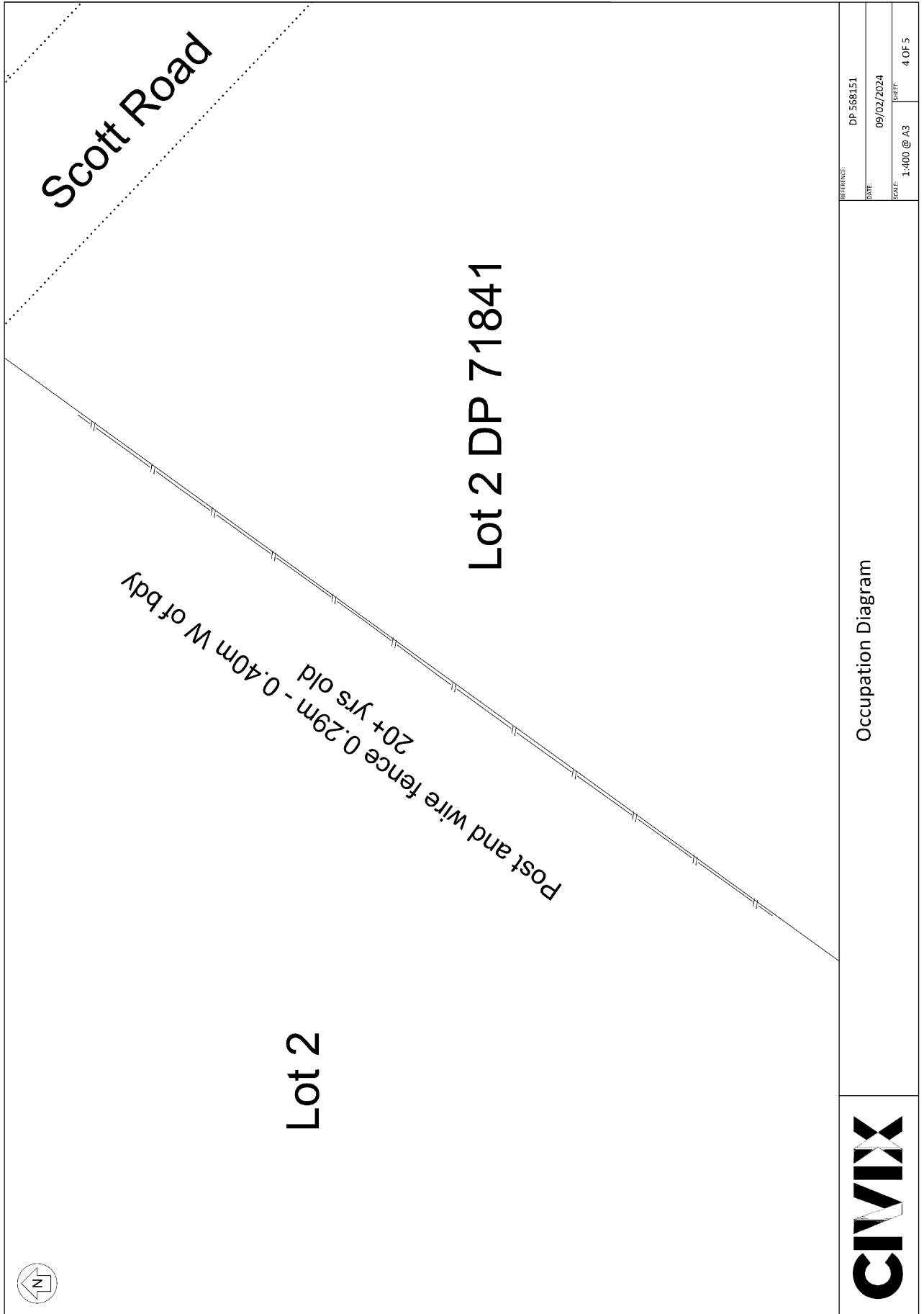
THIS APPLIES TO ALL SHEETS

	Occupation Diagram	REFERENCE: DP 568151 DATE: 09/02/2024 SCALE: 1:2000 @ A3 SHEET: 1 OF 5
---	--------------------	---



# Occupation Diagram

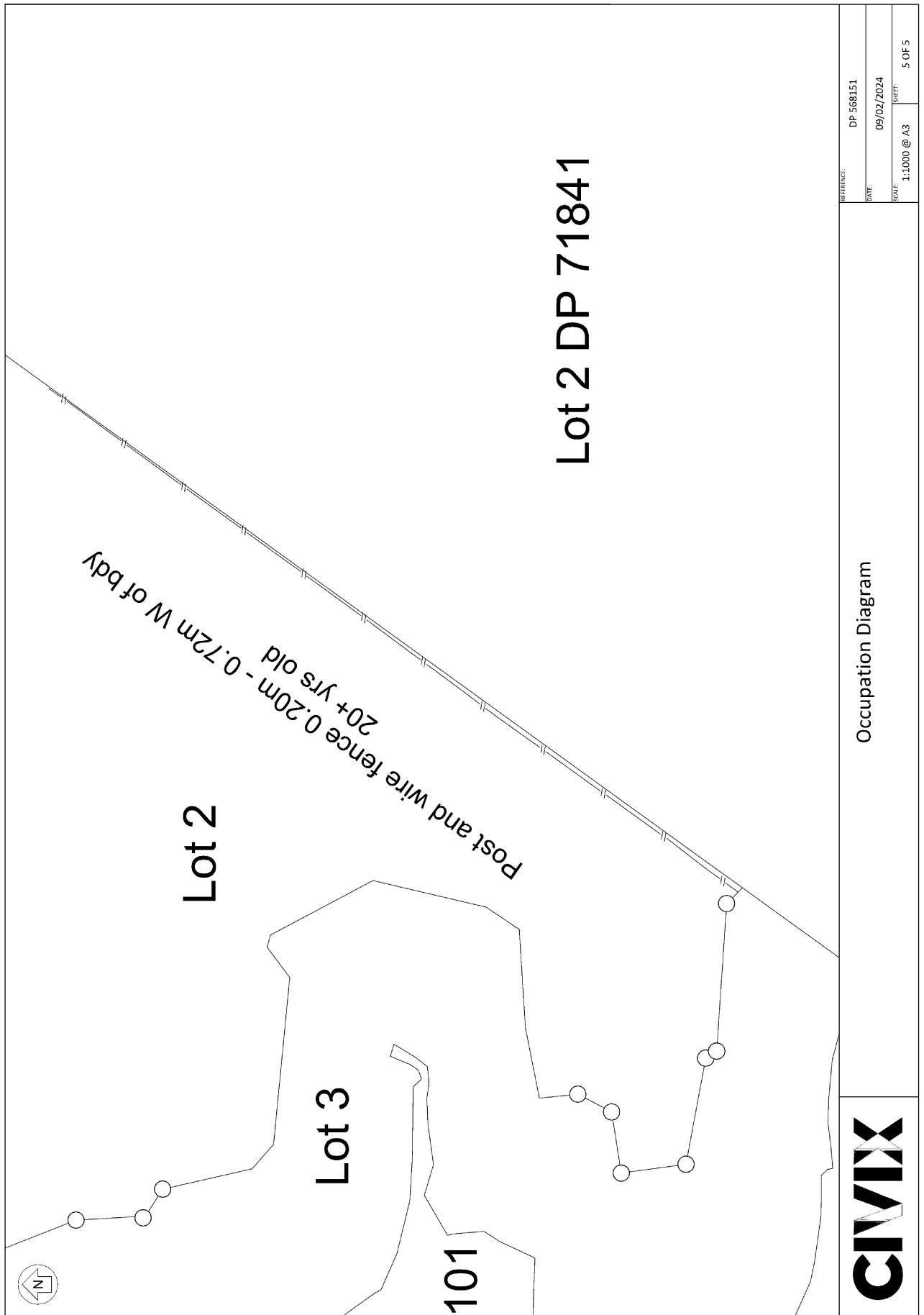




REFERENCE: DP 568151  
DATE: 09/02/2024  
SCALE: 1:400 @ A3  
SHEET: 4 OF 5

Occupation Diagram

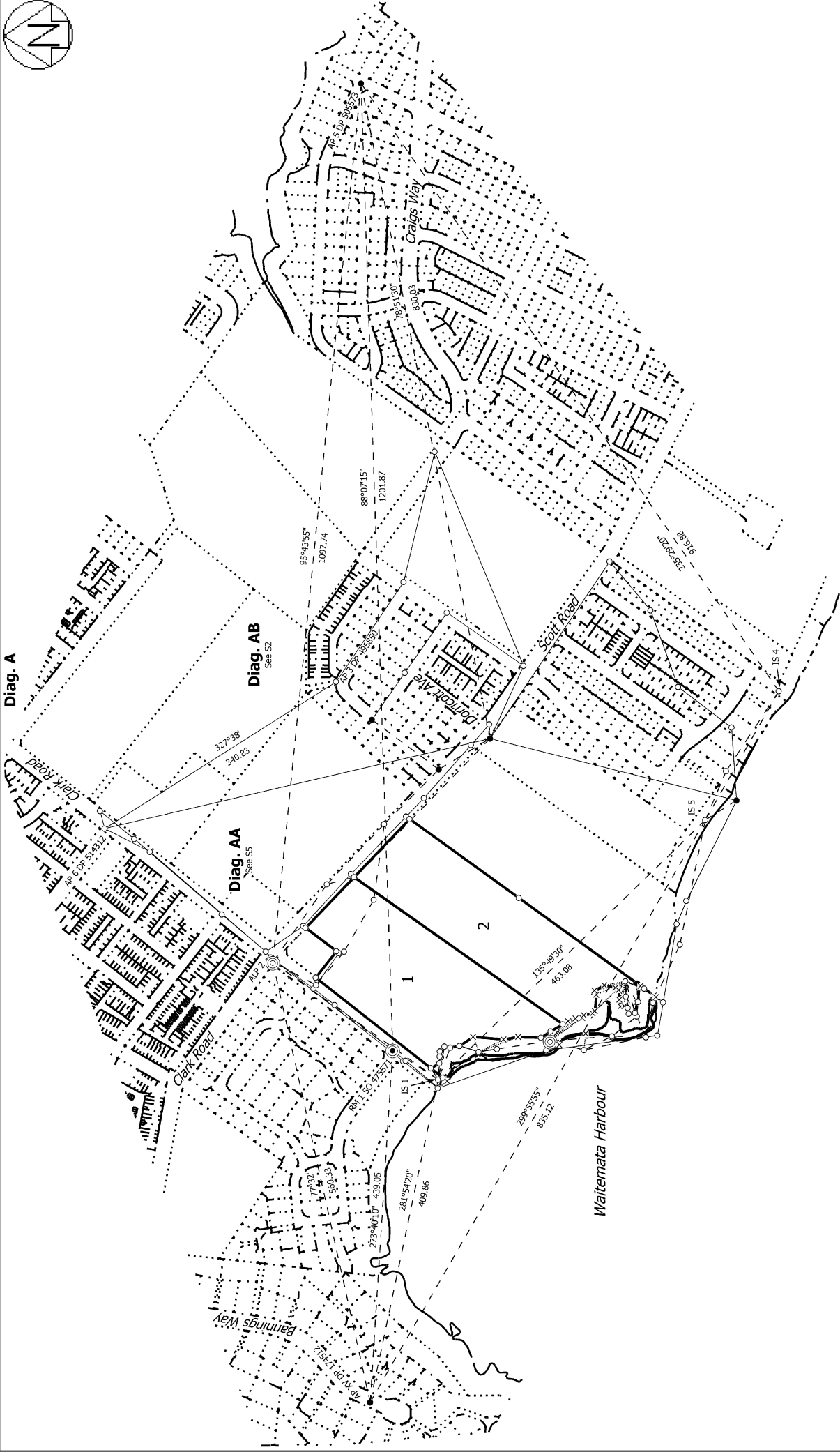




REFERENCE:	DP 568151
DATE:	09/02/2024
SCALE:	1:1000 @ A3
BHEET:	5 OF 5

Occupation Diagram





S 1/10

Land District: North Auckland

**Digitally Generated Plan**  
Generated on: 17/04/2024 10:07:03am Page 16 of 23

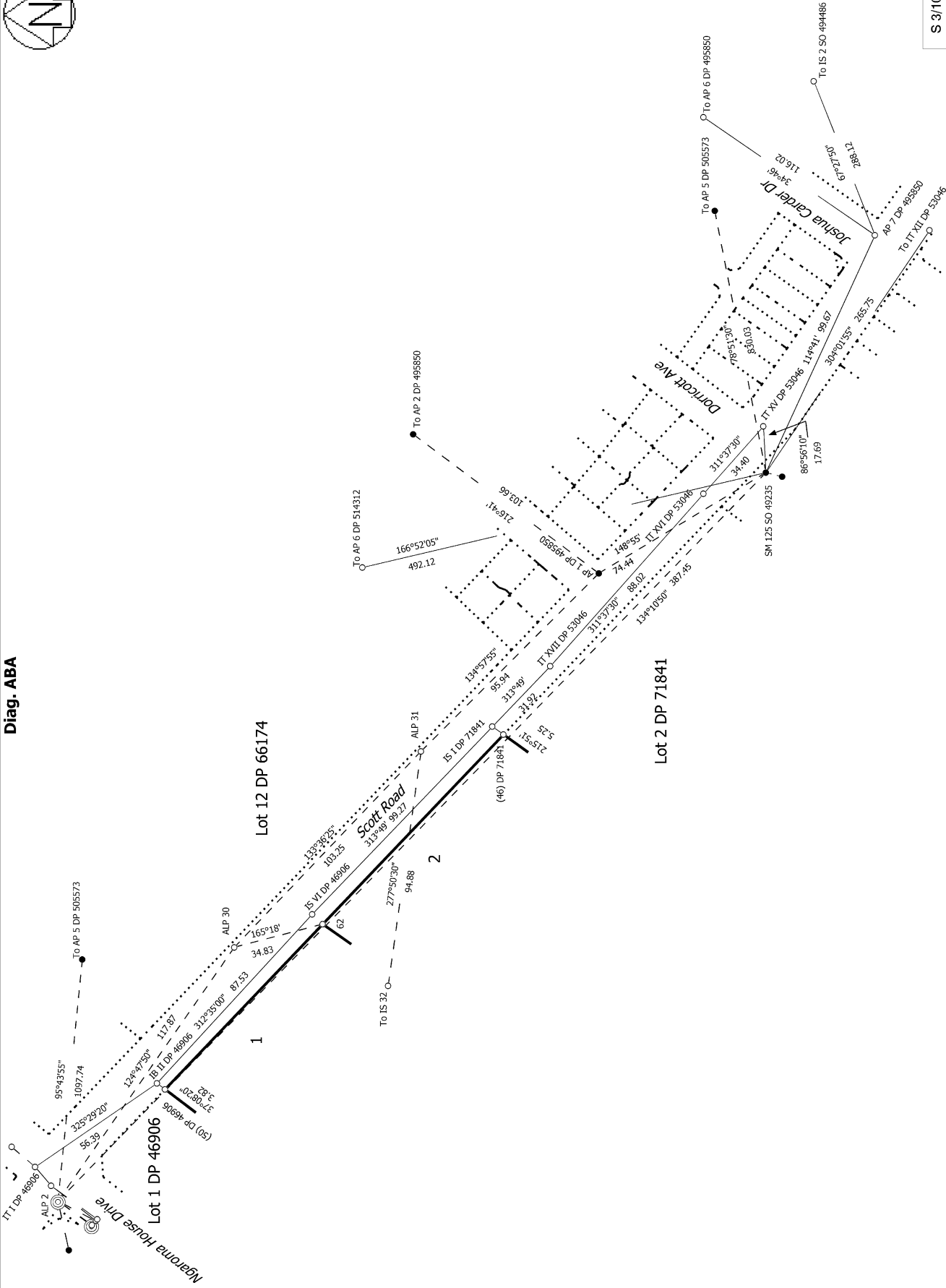
Lots 1-3, 100 & 101 Being a subdivision of Lot 1 DP 71841

Surveyor: Robert James Mears  
Firm: Civix Limited  
Date of Survey: 1/11/2021

Record of Survey  
LT 568151  
Approved on: 17/04/2024







S 3/10

Lots 1-3, 100 & 101 Being a subdivision of Lot 1 DP 71841

Record of Survey  
LT 568151  
Approved on: 17/04/2024

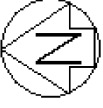
Surveyor: Robert James Mears  
Firm: CIVIX Limited  
Date of Survey: 1/11/2021

Land District: North Auckland

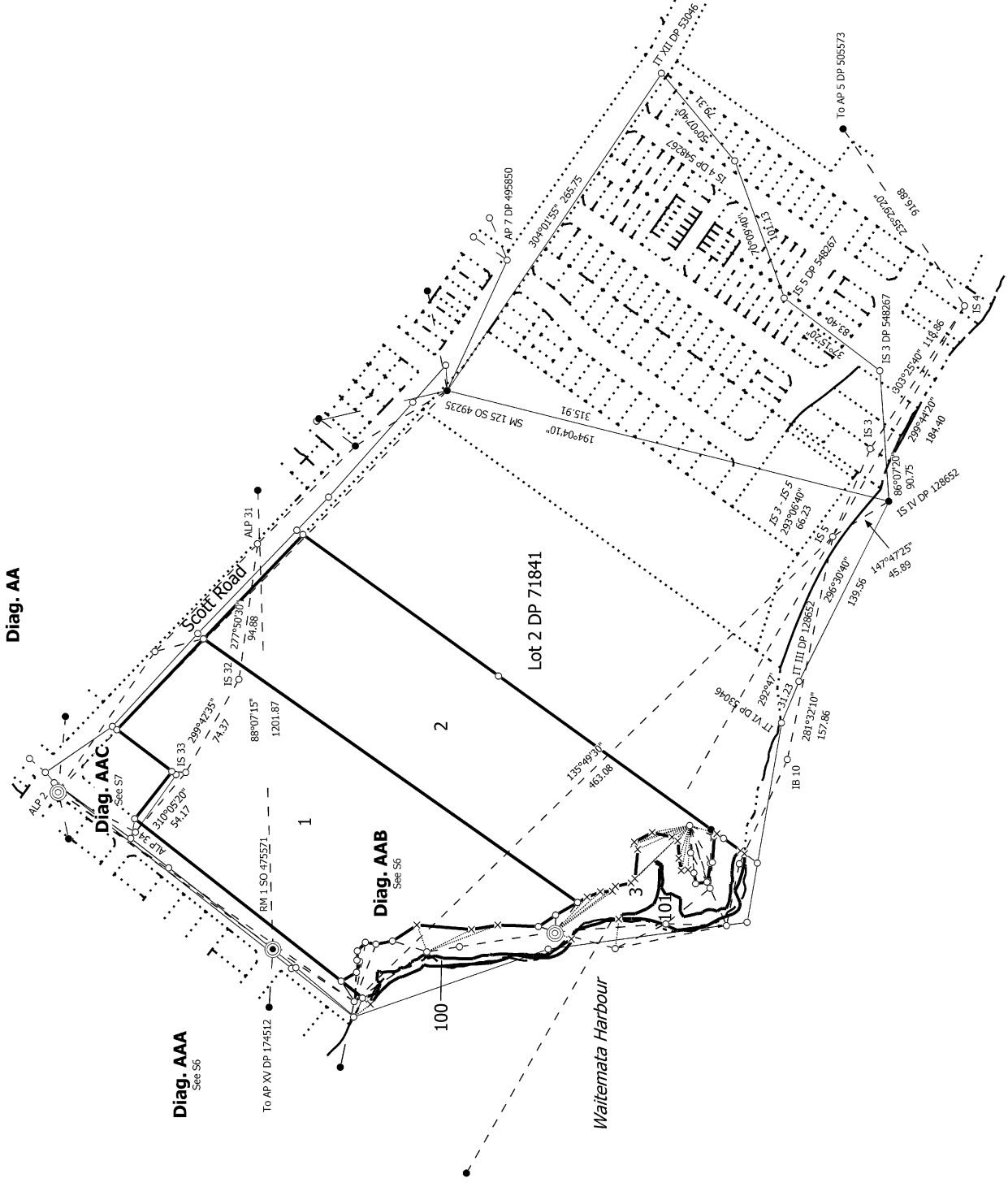
**Digitally Generated Plan**

Generated on: 17/04/2024 10:03:30 AM Page 18 of 23





Diag. AA



Diag. AAA  
See S6

Diag. AAC  
See S7

Diag. AAB  
See S6

Lot 2 DP 71841

S 5/10

Land District: North Auckland

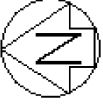
**Digitally Generated Plan**  
Generated on: 17/04/2024 10:03:03am | Page 20 of 23

Lots 1-3, 100 & 101 Being a subdivision of Lot 1 DP 71841

Surveyor: Robert James Mears  
Firm: CIVIX Limited  
Date of Survey: 1/11/2021

Record of Survey  
LT 568151  
Approved on: 17/04/2024





Diag. AAC

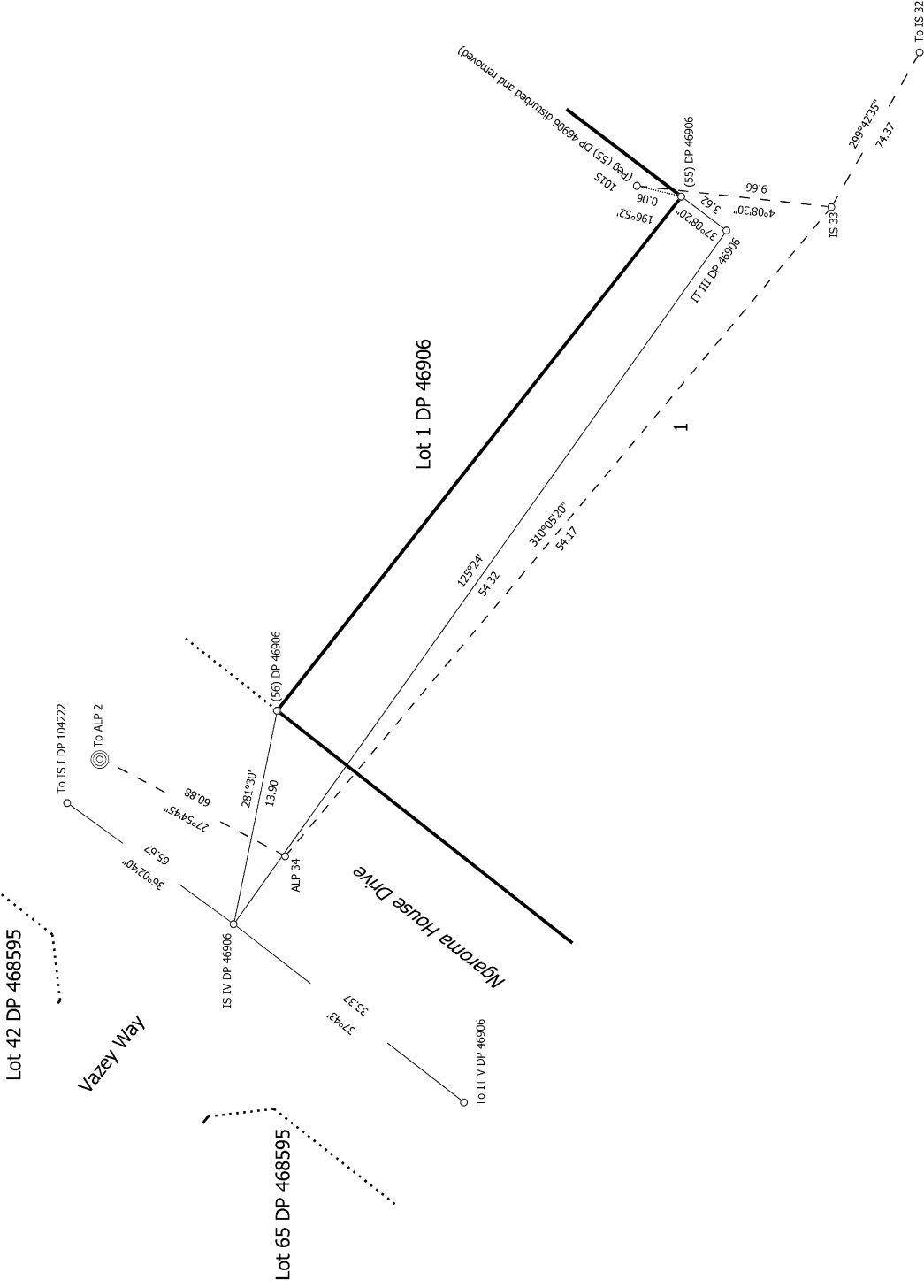


Diagram has been distorted

S 7/10

Land District: North Auckland

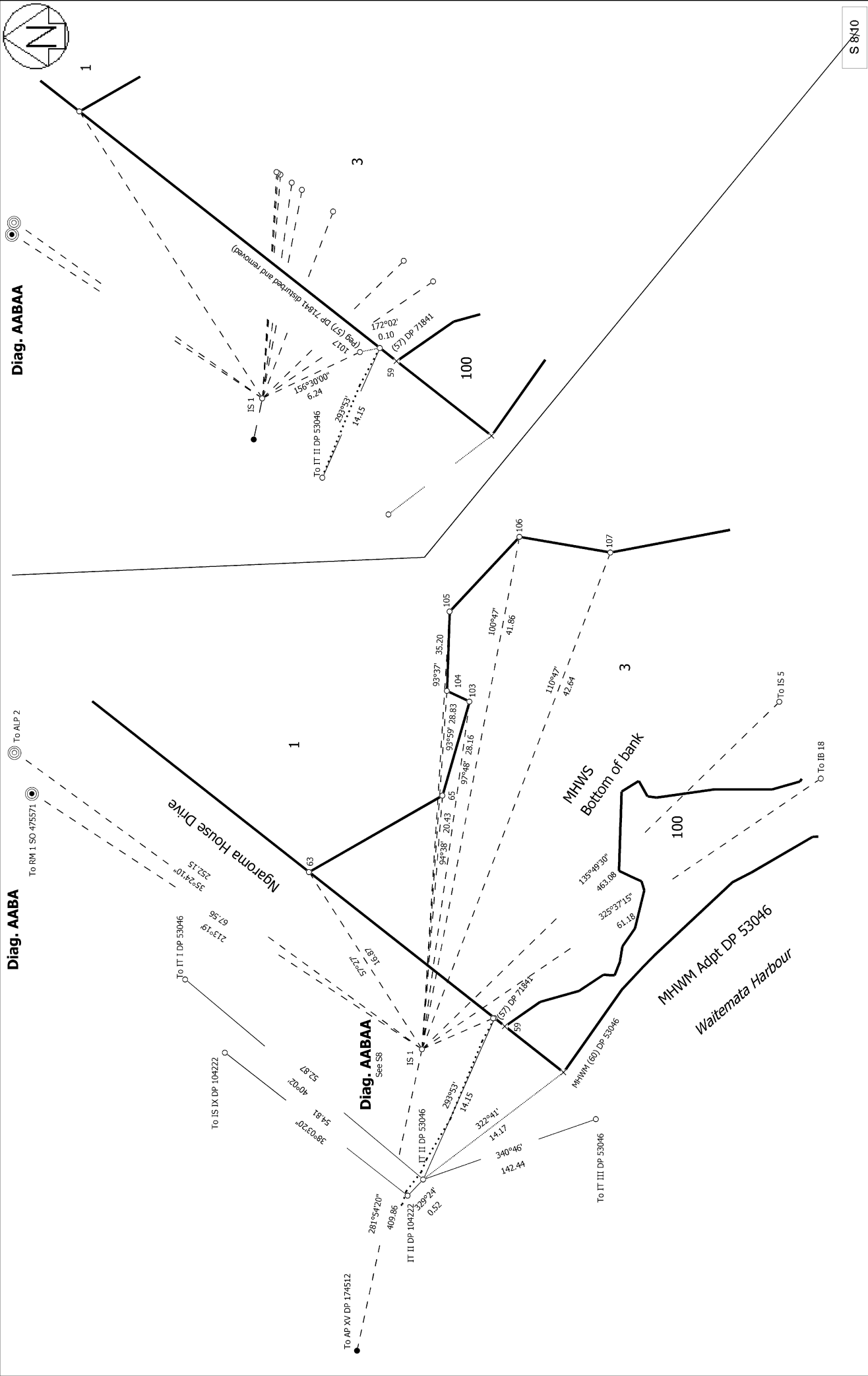
Digitally Generated Plan

Generated on: 17/04/2024 10:07:03am Page 22 of 23

Lots 1-3, 100 & 101 Being a subdivision of Lot 1 DP 71841

Surveyor: Robert James Mears  
Firm: Civix Limited  
Date of Survey: 1/11/2021

Record of Survey  
LT 568151  
Approved on: 17/04/2024



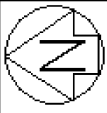
S 840

<p>Land District: North Auckland</p> <p><b>Digitally Generated Plan</b></p> <p>Generated on: 17/04/2024 10:03:00am   Page 23 of 23</p>	<p>Surveyor: Robert James Mears</p> <p>Firm: Civix Limited</p> <p>Date of Survey: 1/11/2021</p>	<p>Record of Survey</p> <p>LT 568151</p> <p>Approved on: 17/04/2024</p>
--	---	---

Lots 1-3, 100 & 101 Being a subdivision of Lot 1 DP 71841







Diag. AABD

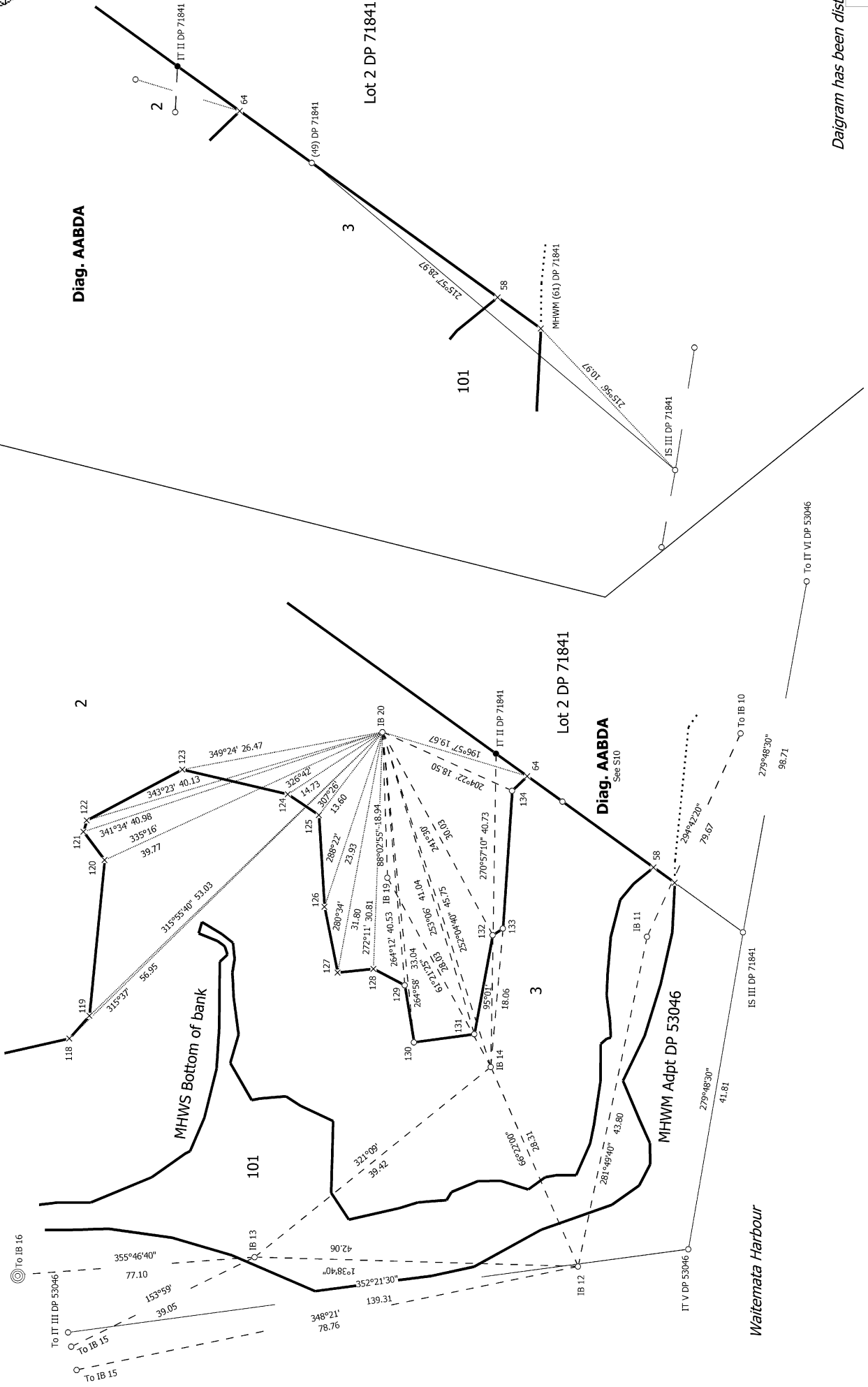


Diagram has been distorted  
S 10/10

Land District: North Auckland

**Digitally Generated Plan**  
Generated on: 17/04/2024 10:03:00am | Page 25 of 29

**Lots 1-3, 100 & 101 Being a subdivision of Lot 1 DP 71841**

Surveyor: Robert James Mears  
Firm: Civix Limited  
Date of Survey: 1/11/2021

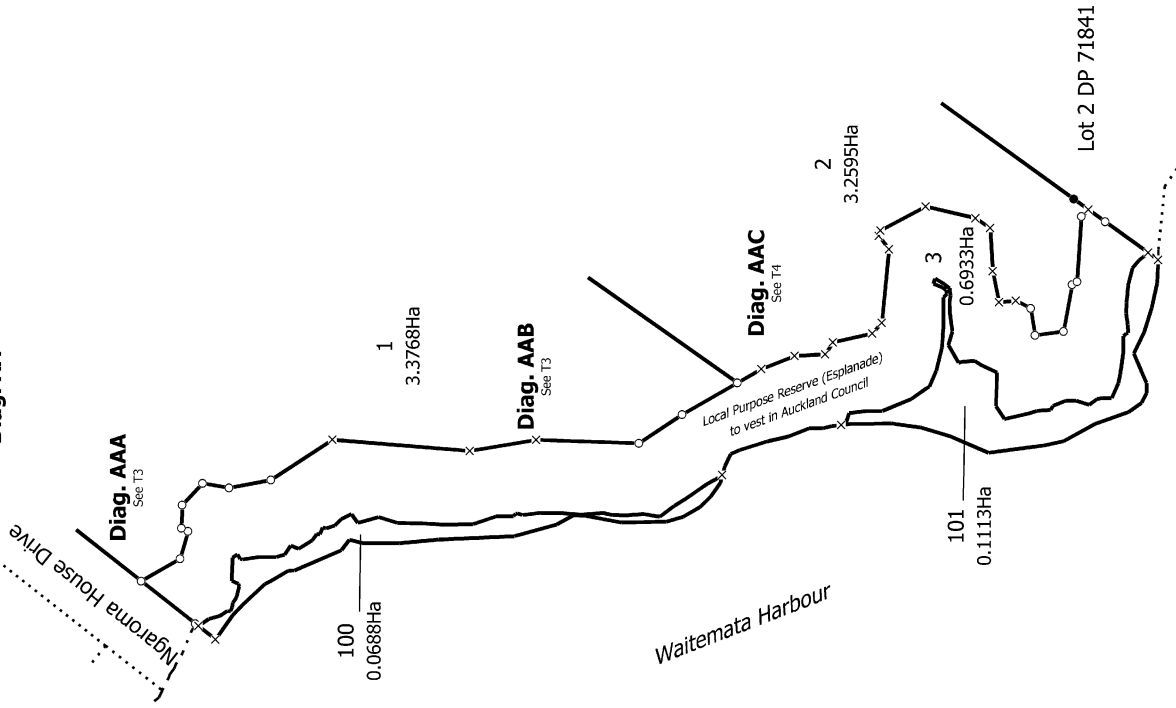
Record of Survey  
LT 568151  
Approved on: 17/04/2024





LOTS 100 AND 101 TO BECOME COMMON MARINE AND COASTAL  
AREA UNDER SECTION 237A(1)(B) RMA 1991

Diag. AA



T 2/4

Land District: North Auckland

**Digitally Generated Plan**  
Generated on: 17/04/2024 10:07:03am | Page 27 of 29

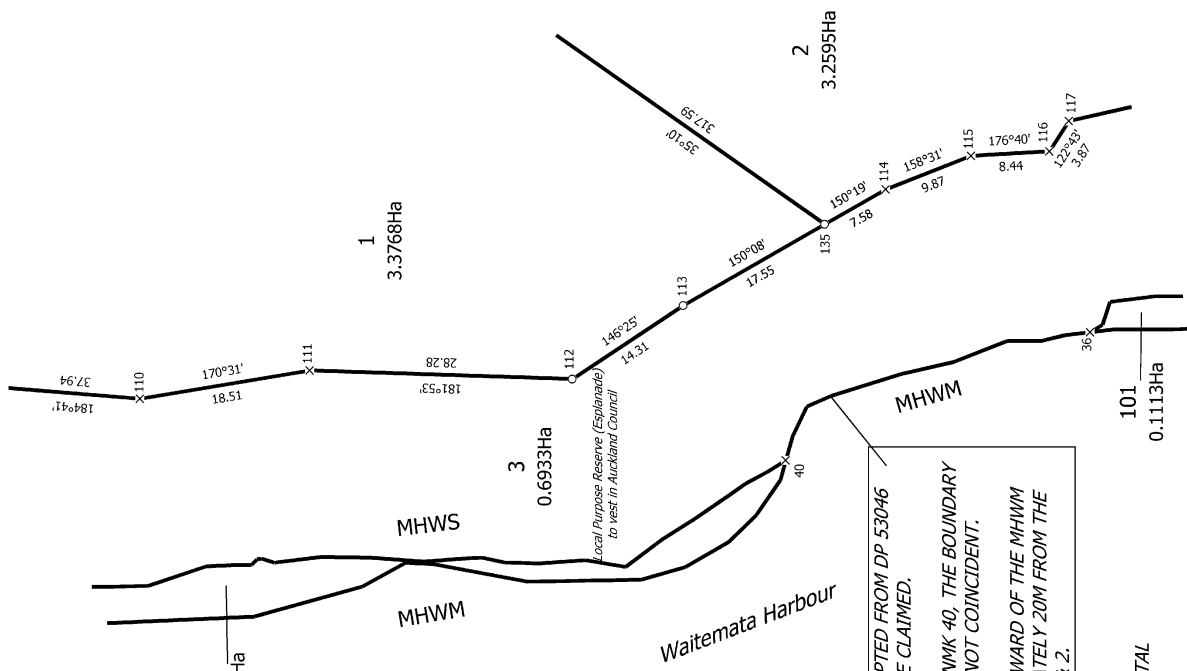
Lots 1-3, 100 & 101 Being a subdivision of Lot 1 DP 71841

Surveyor: Robert James Mears  
Firm: Civix Limited  
Date of Survey: 1/11/2021

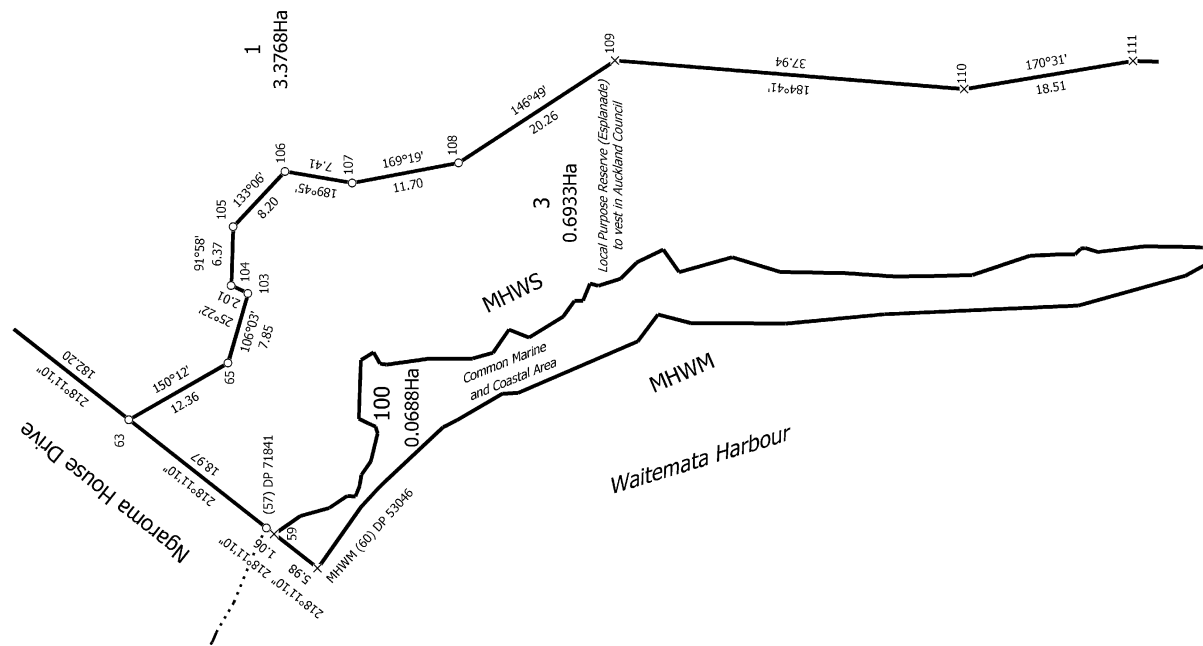
Record of Survey  
LT 568151  
Approved on: 17/04/2024



Diag. AAB



Diag. AAA

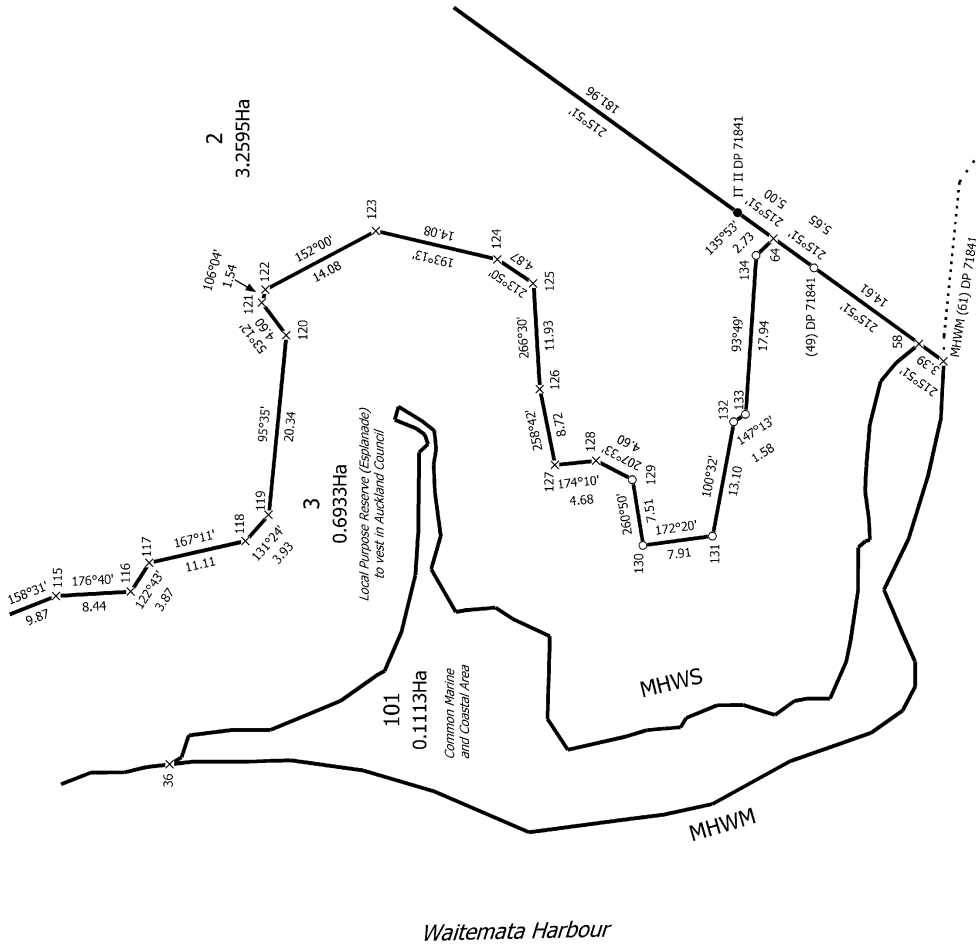


LOTS 100 AND 101 TO BECOME COMMON MARINE AND COASTAL AREA UNDER SECTION 237A(1)(B) RMA 1991



LOTS 100 AND 101 TO BECOME COMMON MARINE AND COASTAL  
AREA UNDER SECTION 237A(1)(B) RMA 1991

Diag. AAC



Lot 2 DP 71841

T 4/4

Land District: North Auckland

Digitally Generated Plan

Generated on: 17/04/2024 10:07:03am Page 29 of 29

Lots 1-3, 100 & 101 Being a subdivision of Lot 1 DP 71841

Surveyor: Robert James Mears  
Firm: Civix Limited  
Date of Survey: 1/11/2021

Record of Survey  
LT 568151  
Approved on: 17/04/2024