



Record of Survey - LT 550103

Survey Number LT 550103
Surveyor Reference 12304A Waimea Water Ltd
Surveyor Ephraim Daniel Jacobsen
Survey Firm Staig and Smith Limited
Surveyor Declaration I Ephraim Daniel Jacobsen, being a licensed cadastral surveyor, certify that--
(a) this dataset provided by me and its related survey are accurate, correct and in accordance with the Cadastral Survey Act 2002 and Cadastral Survey Rules 2021; and
(b) the survey was undertaken by me or under my personal direction.
Declared on 07 Nov 2023 04:32 PM

Survey Details

Dataset Description Lots 1-4 being a Subdivision of Sections 2,3 & 8 SO 506650 and Easement over Section 7 SO 506650
Purpose LT Subdivision
Status Approved as to Survey
Land District Nelson
Meridional Circuit Nelson 2000

Type	Survey
Survey Class	Class B
Vertical Datum	None

Survey Dates

Surveyed Date	02/06/2020	Certified Date	07/11/2023
Submitted Date	07/11/2023 16:32:52	Survey Approval Date	08/11/2023
Deposit Date			

Referenced Surveys

Survey Number	Land District	Bearing Correction
SO 6114	Nelson	-0°00'30"
SO 7060	Nelson	-0°00'30"
DP 350533	Nelson	0°00'00"
SO 506650	Nelson	0°00'00"
SO 522617	Nelson	0°00'00"
SO 526330	Nelson	0°00'00"

Territorial Authorities

Tasman District

Comprised In

RT 874793
RT 873997

Created Parcels

Parcels	Parcel Intent	Area	RT Reference
Area B Deposited Plan 550103	Easement		
Area C Deposited Plan 550103	Easement		
Area D Deposited Plan 550103	Easement		
Area E Deposited Plan 550103	Easement		



Record of Survey - LT 550103

Created Parcels

Parcels	Parcel Intent	Area	RT Reference
Lot 1 Deposited Plan 550103	Fee Simple Title	0.5021 Ha	947359
Lot 2 Deposited Plan 550103	Fee Simple Title	18.0910 Ha	947360
Lot 3 Deposited Plan 550103	Fee Simple Title	4.3316 Ha	947360
Lot 4 Deposited Plan 550103	Fee Simple Title	52.6254 Ha	947359
Area A Deposited Plan 550103	Easement		
Total Area		<hr/> 75.5501 Ha	

Mark and Vector

Survey Number DP 550103

Meridional Circuit Nelson 2000

From	To	Code	Bearing	Adpt Surv	Bearing Correction	Distance	Adpt Surv	Class
IB 1 SO 506650	AP 9 SO 506650	ob11	115°53'30" M			171.89 M		
IT 1 DP 550103	IS XXVII DP 350533	ob20	50°42'35" M			369.14 M		
IB 1 SO 506650	IS XXVI DP 350533	ob12	167°01'00" A	SO 526330	0°00'00"	456.12 A	SO 526330	
IS XXVI DP 350533	IS XXVII DP 350533	ob24	202°45'20" A	DP 350533	0°00'00"	78.72 A	DP 350533	
IB 1 SO 506650	PEG 54 SO 522617	ob13	256°37'00" A	SO 522617	0°00'00"	24.75 A	SO 522617	
IB 1 SO 506650	PEG 61 SO 522617	ob14	205°12'00" A	SO 522617	0°00'00"	21.75 A	SO 522617	
IB 1 SO 506650	UNMK (20) SO 7060	ob15	66°52'00" A	SO 506650	0°00'00"	180.98 A	SO 506650	
IB 1 SO 506650	IP III SO 6114	ob16	60°36'40" A	SO 506650	0°00'00"	183.90 A	SO 506650	
IB 1 SO 506650	PEG 58 SO 522617	ob17	319°03'00" A	SO 522617	0°00'00"	329.49 A	SO 522617	
PEG 54 SO 522617	UNMK 412 DP 550103	ob27	51°46'30" A	SO 6114	-0°00'30"	8.27 C		Class B
PEG 2 DP 550103	PEG IV (1) SO 6114	ob31	61°08'30" A	SO 6114	-0°00'30"	87.59 A	SO 6114	Class B
PEG IV (1) SO 6114	IP III SO 6114	ob32	71°28'30" A	SO 6114	-0°00'30"	72.44 A	SO 6114	Class B
PEG 61 SO 522617	UNMK 414 DP 550103	ob28	51°46'30" A	SO 7060	-0°00'30"	5.65 C		Class B
PEG 553 DP 550103	UNMK (19) SO 7060	ob33	61°08'30" A	DP 350533	0°00'00"	84.07 A	DP 350533	Class B
UNMK (19) SO 7060	UNMK (20) SO 7060	ob35	71°28'30" A	DP 350533	0°00'00"	70.41 A	DP 350533	Class B
PEG 58 SO 522617	PEG 550 DP 550103	ob36	147°55'00" A	SO 506650	0°00'00"	78.34 C		Class B
PEG 550 DP 550103	UNMK 285 DP 550103	ob39	147°55'00" A	SO 506650	0°00'00"	107.38 C		Class B
IS 60 SO 522617	UNMK 286 DP 550103	ob38	134°42'40" A	SO 506650	0°00'00"	42.81 C		Class B
PEG 550 DP 550103	UNMK 4 DP 550103	ob40	137°28'00" C			159.83 C		Class B
UNMK 4 DP 550103	PEG 2 DP 550103	ob41	116°03'30" C			90.40 C		Class B
IS XXVI DP 350533	PEG 62 SO 522617	ob25	222°58'40" A	SO 522617	0°00'00"	430.57 A	SO 522617	
PEG 61 SO 522617	UNMK 63 SO 506650	ob29	135°36'00" A	SO 506650	0°00'00"	63.00 A	SO 506650	
UNMK 63 SO 506650	UNMK 64 SO 506650	ob42	191°00'00" A	SO 506650	0°00'00"	47.66 A	SO 506650	Class B
UNMK 64 SO 506650	UNMK 65 SO 506650	ob43	224°48'00" A	SO 506650	0°00'00"	11.78 A	SO 506650	Class B

Mark and Vector

Survey Number DP 550103

Meridional Circuit Nelson 2000

From	To	Code	Bearing	Adpt Surv	Bearing Correction	Distance	Adpt Surv	Class
UNMK 65 SO 506650	UNMK 66 SO 506650	ob44	261°04'00"	A SO 506650	0°00'00"	12.18 A	SO 506650	Class B
UNMK 66 SO 506650	PEG 67 SO 522617	ob45	230°19'00"	A SO 506650	0°00'00"	51.10 A	SO 506650	Class B
PEG 67 SO 522617	UNMK 68 SO 506650	ob46	215°29'00"	A SO 506650	0°00'00"	19.12 A	SO 506650	Class B
UNMK 68 SO 506650	UNMK 69 SO 506650	ob47	191°36'20"	A SO 506650	0°00'00"	54.12 A	SO 506650	Class B
UNMK 69 SO 506650	UNMK 70 SO 506650	ob48	223°32'00"	A SO 506650	0°00'00"	29.47 A	SO 506650	Class B
UNMK 70 SO 506650	PEG 71 SO 522617	ob49	141°51'00"	A SO 506650	0°00'00"	29.35 A	SO 506650	Class B
PEG 71 SO 522617	UNMK 72 SO 506650	ob50	161°53'00"	A SO 506650	0°00'00"	44.32 A	SO 506650	Class B
UNMK 72 SO 506650	PEG 73 SO 522617	ob51	158°23'20"	A SO 506650	0°00'00"	70.41 A	SO 506650	Class B
PEG 73 SO 522617	UNMK 74 SO 506650	ob52	151°59'20"	A SO 506650	0°00'00"	53.56 A	SO 506650	Class B
UNMK 74 SO 506650	UNMK 75 SO 506650	ob53	160°04'00"	A SO 506650	0°00'00"	45.25 A	SO 506650	Class B
UNMK 75 SO 506650	PEG 76 SO 522617	ob54	155°22'00"	A SO 506650	0°00'00"	20.14 A	SO 506650	Class B
PEG 76 SO 522617	UNMK 77 SO 506650	ob55	195°04'00"	A SO 506650	0°00'00"	10.56 A	SO 506650	Class B
UNMK 77 SO 506650	PEG 78 SO 522617	ob56	221°26'00"	A SO 506650	0°00'00"	22.30 A	SO 506650	Class B
PEG 78 SO 522617	UNMK 79 SO 506650	ob57	247°39'00"	A SO 506650	0°00'00"	14.56 A	SO 506650	Class B
UNMK 79 SO 506650	UNMK 80 SO 506650	ob58	252°20'00"	A SO 506650	0°00'00"	12.55 A	SO 506650	Class B
UNMK 80 SO 506650	UNMK 81 SO 506650	ob59	241°38'00"	A SO 506650	0°00'00"	14.70 A	SO 506650	Class B
UNMK 81 SO 506650	PEG 82 SO 522617	ob60	248°00'00"	A SO 506650	0°00'00"	24.93 A	SO 506650	Class B
PEG 82 SO 522617	UNMK 83 SO 506650	ob61	225°54'00"	A SO 506650	0°00'00"	34.05 A	SO 506650	Class B
UNMK 83 SO 506650	PEG 84 SO 522617	ob62	226°05'00"	A SO 506650	0°00'00"	29.47 A	SO 506650	Class B
PEG 84 SO 522617	UNMK 85 SO 506650	ob63	218°28'00"	A SO 506650	0°00'00"	35.57 A	SO 506650	Class B
UNMK 85 SO 506650	PEG 86 SO 522617	ob64	212°05'00"	A SO 506650	0°00'00"	31.21 A	SO 506650	Class B
PEG 86 SO 522617	UNMK 87 SO 506650	ob65	233°47'00"	A SO 506650	0°00'00"	18.89 A	SO 506650	Class B
UNMK 87 SO 506650	UNMK 417 DP 550103	ob66	250°29'00"	A SO 506650	0°00'00"	21.06 C		Class B
PEG 88 SO 522617	UNMK 416 DP 550103	ob67	219°50'00"	A SO 506650	0°00'00"	4.71 C		Class B

Mark and Vector

Survey Number DP 550103

Meridional Circuit Nelson 2000

From	To	Code	Bearing	Adpt Surv	Bearing Correction	Distance	Adpt Surv	Class
UNMK 89 SO 506650	PEG 90 SO 522617	ob69	187°20'00"	A SO 506650	0°00'00"	14.94 A	SO 506650	Class B
PEG 90 SO 522617	UNMK 552 DP 550103	ob70	171°42'20"	A SO 506650	0°00'00"	34.47 C		Class B
UNMK 552 DP 550103	PEG 62 SO 522617	ob73	171°42'20"	A SO 506650	0°00'00"	35.84 A	SO 506650	
IT 1 DP 550103	UNMK 551 DP 550103	ob21	239°12'00"	C		83.99 C		
UNMK 551 DP 550103	UNMK 5 DP 550103	ob72	33°48'00"	C		39.23 C		Class BD
UNMK 5 DP 550103	UNMK 6 DP 550103	ob74	87°41'00"	C		55.23 C		Class B
UNMK 6 DP 550103	UNMK 7 DP 550103	ob75	71°26'00"	C		8.57 C		Class B
UNMK 7 DP 550103	UNMK 552 DP 550103	ob76	7°51'00"	C		32.56 C		Class B
PEG 553 DP 550103	UNMK 63 SO 506650	ob34	173°11'00"	C		73.40 C		Class B
IB 1 SO 506650	IB 3 SO 506650	ob18	184°02'52"	M		1,431.46 M		
IB 3 SO 506650	IB 5 SO 506650	ob80	45°27'55"	A SO 526330	0°00'00"	450.85 A	SO 526330	
IB 5 SO 506650	UNMK 94 SO 506650	ob82	265°19'15"	A SO 506650	0°00'00"	699.64 A	SO 506650	
PEG 58 SO 522617	PEG 57 SO 522617	ob37	355°45'10"	A SO 506650	0°00'00"	463.50 A	SO 506650	Class B
PEG 57 SO 522617	PEG 56 SO 522617	ob77	266°47'40"	A SO 506650	0°00'00"	62.86 A	SO 506650	Class B
PEG 56 SO 522617	UNMK 284 DP 550103	ob78	220°05'20"	A SO 506650	0°00'00"	114.92 A	SO 506650	Class B
PEG 55 SO 522617	PEG 50 SO 522617	ob83	304°46'00"	A SO 506650	0°00'00"	28.00 A	SO 506650	Class B
PEG 50 SO 522617	UNMK 350 SO 506650	ob84	40°30'00"	A SO 506650	0°00'00"	10.53 A	SO 506650	Class B
UNMK 350 SO 506650	PEG 16 DP 350533	ob85	34°19'00"	A SO 506650	0°00'00"	10.95 A	SO 506650	Class B
UNMK 352 SO 506650	UNMK 353 SO 506650	ob87	29°50'00"	A SO 506650	0°00'00"	18.29 A	SO 506650	Class B
UNMK 353 SO 506650	UNMK 354 SO 506650	ob88	31°30'00"	A SO 506650	0°00'00"	13.89 A	SO 506650	Class B
UNMK 354 SO 506650	UNMK 355 SO 506650	ob89	22°36'00"	A SO 506650	0°00'00"	13.87 A	SO 506650	Class B
UNMK 355 SO 506650	UNMK 356 SO 506650	ob90	29°45'00"	A SO 506650	0°00'00"	12.27 A	SO 506650	Class B
UNMK 356 SO 506650	PEG 23 DP 350533	ob91	41°28'00"	A SO 506650	0°00'00"	12.29 A	SO 506650	Class B
PEG 23 DP 350533	UNMK 357 SO 506650	ob92	19°15'00"	A SO 506650	0°00'00"	15.00 A	SO 506650	Class B
UNMK 357 SO 506650	UNMK 358 SO 506650	ob93	28°04'00"	A SO 506650	0°00'00"	14.58 A	SO 506650	Class B

Mark and Vector

Survey Number DP 550103

Meridional Circuit Nelson 2000

From	To	Code	Bearing	Adpt Surv	Bearing Correction	Distance	Adpt Surv	Class
UNMK 358 SO 506650	PEG 24 DP 350533	ob94	31°29'00"	A SO 506650	0°00'00"	13.90 A	SO 506650	Class B
PEG 24 DP 350533	UNMK 359 SO 506650	ob95	17°08'00"	A SO 506650	0°00'00"	11.59 A	SO 506650	Class B
UNMK 359 SO 506650	UNMK 360 SO 506650	ob96	1°45'00"	A SO 506650	0°00'00"	10.72 A	SO 506650	Class B
UNMK 360 SO 506650	UNMK 361 SO 506650	ob97	340°06'00"	A SO 506650	0°00'00"	16.94 A	SO 506650	Class B
UNMK 361 SO 506650	UNMK 362 SO 506650	ob98	321°30'00"	A SO 506650	0°00'00"	15.43 A	SO 506650	Class B
UNMK 362 SO 506650	PEG 15 DP 350533	ob99	316°20'00"	A SO 506650	0°00'00"	5.67 A	SO 506650	Class B
PEG 15 DP 350533	UNMK 220 SO 506650	ob100	316°39'00"	A SO 506650	0°00'00"	6.13 A	SO 506650	Class B
UNMK 220 SO 506650	UNMK 221 SO 506650	ob101	5°01'00"	A SO 506650	0°00'00"	4.95 A	SO 506650	Class B
UNMK 221 SO 506650	UNMK 222 SO 506650	ob102	53°24'00"	A SO 506650	0°00'00"	7.75 A	SO 506650	Class B
UNMK 222 SO 506650	UNMK 223 SO 506650	ob103	68°23'00"	A SO 506650	0°00'00"	14.73 A	SO 506650	Class B
UNMK 223 SO 506650	UNMK 224 SO 506650	ob104	65°01'00"	A SO 506650	0°00'00"	18.54 A	SO 506650	Class B
UNMK 224 SO 506650	UNMK 225 SO 506650	ob105	70°29'00"	A SO 506650	0°00'00"	18.57 A	SO 506650	Class B
UNMK 225 SO 506650	UNMK 226 SO 506650	ob106	65°40'00"	A SO 506650	0°00'00"	17.23 A	SO 506650	Class B
UNMK 226 SO 506650	UNMK 227 SO 506650	ob107	50°08'00"	A SO 506650	0°00'00"	17.75 A	SO 506650	Class B
UNMK 227 SO 506650	UNMK 228 SO 506650	ob108	36°08'00"	A SO 506650	0°00'00"	14.24 A	SO 506650	Class B
UNMK 228 SO 506650	UNMK 229 SO 506650	ob109	28°00'00"	A SO 506650	0°00'00"	16.61 A	SO 506650	Class B
UNMK 229 SO 506650	UNMK 230 SO 506650	ob110	39°33'00"	A SO 506650	0°00'00"	17.12 A	SO 506650	Class B
UNMK 230 SO 506650	UNMK 231 SO 506650	ob111	46°33'00"	A SO 506650	0°00'00"	15.45 A	SO 506650	Class B
UNMK 231 SO 506650	UNMK 232 SO 506650	ob112	29°47'00"	A SO 506650	0°00'00"	18.74 A	SO 506650	Class B
UNMK 232 SO 506650	UNMK 233 SO 506650	ob113	18°23'00"	A SO 506650	0°00'00"	21.53 A	SO 506650	Class B
UNMK 233 SO 506650	UNMK 234 SO 506650	ob114	17°15'00"	A SO 506650	0°00'00"	21.04 A	SO 506650	Class B
UNMK 234 SO 506650	UNMK 235 SO 506650	ob115	25°15'00"	A SO 506650	0°00'00"	19.09 A	SO 506650	Class B
UNMK 235 SO 506650	UNMK 236 SO 506650	ob116	28°45'00"	A SO 506650	0°00'00"	19.60 A	SO 506650	Class B
UNMK 236 SO 506650	UNMK 237 SO 506650	ob117	36°20'00"	A SO 506650	0°00'00"	8.53 A	SO 506650	Class B

Mark and Vector

Survey Number DP 550103

Meridional Circuit Nelson 2000

From	To	Code	Bearing	Adpt Surv	Bearing Correction	Distance	Adpt Surv	Class
UNMK 237 SO 506650	UNMK 238 SO 506650	ob118	134°28'00"	A SO 506650	0°00'00"	14.99 A	SO 506650	Class B
UNMK 238 SO 506650	UNMK 239 SO 506650	ob119	135°11'00"	A SO 506650	0°00'00"	16.25 A	SO 506650	Class B
UNMK 239 SO 506650	UNMK 240 SO 506650	ob120	136°33'00"	A SO 506650	0°00'00"	15.75 A	SO 506650	Class B
UNMK 240 SO 506650	UNMK 241 SO 506650	ob121	151°06'00"	A SO 506650	0°00'00"	21.59 A	SO 506650	Class B
UNMK 241 SO 506650	UNMK 242 SO 506650	ob122	165°37'00"	A SO 506650	0°00'00"	20.24 A	SO 506650	Class B
UNMK 242 SO 506650	UNMK 243 SO 506650	ob123	162°44'00"	A SO 506650	0°00'00"	16.94 A	SO 506650	Class B
UNMK 243 SO 506650	UNMK 244 SO 506650	ob124	160°23'00"	A SO 506650	0°00'00"	19.53 A	SO 506650	Class B
UNMK 244 SO 506650	UNMK 245 SO 506650	ob125	161°51'00"	A SO 506650	0°00'00"	25.24 A	SO 506650	Class B
UNMK 245 SO 506650	UNMK 246 SO 506650	ob126	161°19'00"	A SO 506650	0°00'00"	20.50 A	SO 506650	Class B
UNMK 246 SO 506650	UNMK 247 SO 506650	ob127	166°13'00"	A SO 506650	0°00'00"	19.73 A	SO 506650	Class B
UNMK 247 SO 506650	UNMK 248 SO 506650	ob128	154°54'00"	A SO 506650	0°00'00"	15.26 A	SO 506650	Class B
UNMK 248 SO 506650	UNMK 249 SO 506650	ob129	135°54'00"	A SO 506650	0°00'00"	15.83 A	SO 506650	Class B
UNMK 249 SO 506650	UNMK 250 SO 506650	ob130	125°57'00"	A SO 506650	0°00'00"	14.55 A	SO 506650	Class B
UNMK 250 SO 506650	UNMK 251 SO 506650	ob131	122°26'00"	A SO 506650	0°00'00"	15.32 A	SO 506650	Class B
UNMK 251 SO 506650	UNMK 252 SO 506650	ob132	111°58'00"	A SO 506650	0°00'00"	20.34 A	SO 506650	Class B
UNMK 252 SO 506650	UNMK 253 SO 506650	ob133	90°39'00"	A SO 506650	0°00'00"	19.47 A	SO 506650	Class B
UNMK 253 SO 506650	UNMK 254 SO 506650	ob134	85°33'00"	A SO 506650	0°00'00"	21.73 A	SO 506650	Class B
UNMK 254 SO 506650	UNMK 255 SO 506650	ob135	93°30'00"	A SO 506650	0°00'00"	14.53 A	SO 506650	Class B
UNMK 255 SO 506650	UNMK 256 SO 506650	ob136	120°58'00"	A SO 506650	0°00'00"	10.14 A	SO 506650	Class B
UNMK 256 SO 506650	UNMK 257 SO 506650	ob137	147°04'00"	A SO 506650	0°00'00"	12.87 A	SO 506650	Class B
UNMK 257 SO 506650	UNMK 258 SO 506650	ob138	177°39'00"	A SO 506650	0°00'00"	22.96 A	SO 506650	Class B
UNMK 258 SO 506650	UNMK 259 SO 506650	ob139	187°45'00"	A SO 506650	0°00'00"	25.38 A	SO 506650	Class B
UNMK 259 SO 506650	UNMK 260 SO 506650	ob140	194°37'00"	A SO 506650	0°00'00"	33.75 A	SO 506650	Class B
UNMK 260 SO 506650	UNMK 261 SO 506650	ob141	193°08'00"	A SO 506650	0°00'00"	23.99 A	SO 506650	Class B

Mark and Vector

Survey Number DP 550103

Meridional Circuit Nelson 2000

From	To	Code	Bearing	Adpt Surv	Bearing Correction	Distance	Adpt Surv	Class
UNMK 261 SO 506650	UNMK 262 SO 506650	ob142	183°00'00"	A SO 506650	0°00'00"	27.61	A SO 506650	Class B
UNMK 262 SO 506650	UNMK 263 SO 506650	ob143	175°41'00"	A SO 506650	0°00'00"	14.06	A SO 506650	Class B
UNMK 263 SO 506650	UNMK 264 SO 506650	ob144	204°43'00"	A SO 506650	0°00'00"	9.67	A SO 506650	Class B
UNMK 264 SO 506650	UNMK 265 SO 506650	ob145	216°14'00"	A SO 506650	0°00'00"	14.82	A SO 506650	Class B
UNMK 265 SO 506650	UNMK 266 SO 506650	ob146	230°31'00"	A SO 506650	0°00'00"	18.07	A SO 506650	Class B
UNMK 266 SO 506650	UNMK 267 SO 506650	ob147	244°04'00"	A SO 506650	0°00'00"	21.85	A SO 506650	Class B
UNMK 267 SO 506650	UNMK 268 SO 506650	ob148	237°07'00"	A SO 506650	0°00'00"	15.84	A SO 506650	Class B
UNMK 268 SO 506650	UNMK 269 SO 506650	ob149	225°39'00"	A SO 506650	0°00'00"	23.57	A SO 506650	Class B
UNMK 269 SO 506650	UNMK 270 SO 506650	ob150	207°43'00"	A SO 506650	0°00'00"	41.29	A SO 506650	Class B
UNMK 270 SO 506650	UNMK 271 SO 506650	ob151	192°27'00"	A SO 506650	0°00'00"	24.90	A SO 506650	Class B
UNMK 271 SO 506650	UNMK 272 SO 506650	ob152	181°39'00"	A SO 506650	0°00'00"	34.81	A SO 506650	Class B
UNMK 272 SO 506650	UNMK 273 SO 506650	ob153	182°58'00"	A SO 506650	0°00'00"	44.82	A SO 506650	Class B
UNMK 273 SO 506650	UNMK 274 SO 506650	ob154	178°09'00"	A SO 506650	0°00'00"	46.01	A SO 506650	Class B
UNMK 274 SO 506650	UNMK 275 SO 506650	ob155	169°32'00"	A SO 506650	0°00'00"	31.96	A SO 506650	Class B
UNMK 275 SO 506650	UNMK 276 SO 506650	ob156	156°45'00"	A SO 506650	0°00'00"	17.42	A SO 506650	Class B
UNMK 276 SO 506650	UNMK 277 SO 506650	ob157	141°33'00"	A SO 506650	0°00'00"	24.36	A SO 506650	Class B
UNMK 277 SO 506650	UNMK 278 SO 506650	ob158	138°13'00"	A SO 506650	0°00'00"	27.89	A SO 506650	Class B
UNMK 278 SO 506650	UNMK 279 SO 506650	ob159	139°39'00"	A SO 506650	0°00'00"	30.67	A SO 506650	Class B
UNMK 279 SO 506650	UNMK 280 SO 506650	ob160	128°48'00"	A SO 506650	0°00'00"	31.02	A SO 506650	Class B
UNMK 280 SO 506650	UNMK 281 SO 506650	ob161	127°54'00"	A SO 506650	0°00'00"	29.30	A SO 506650	Class B
UNMK 281 SO 506650	UNMK 282 SO 506650	ob162	140°32'00"	A SO 506650	0°00'00"	31.80	A SO 506650	Class B
UNMK 282 SO 506650	UNMK 283 SO 506650	ob163	140°52'00"	A SO 506650	0°00'00"	34.32	A SO 506650	Class B
UNMK 283 SO 506650	UNMK 284 SO 506650	ob164	136°40'00"	A SO 506650	0°00'00"	30.83	A SO 506650	Class B
UNMK 284 SO 506650	UNMK 285 SO 506650	ob165	126°18'00"	A SO 506650	0°00'00"	37.33	A SO 506650	Class B

Mark and Vector

Survey Number DP 550103

Meridional Circuit Nelson 2000

From	To	Code	Bearing	Adpt Surv	Bearing Correction	Distance	Adpt Surv	Class
UNMK 285 SO 506650	UNMK 286 SO 506650	ob166	125°36'00"	A SO 506650	0°00'00"	45.62 A	SO 506650	Class B
UNMK 286 SO 506650	IP III SO 6114	ob167	121°25'00"	A SO 506650	0°00'00"	28.41 A	SO 506650	Class B
UNMK (20) SO 7060	UNMK 300 SO 506650	ob30	181°34'00"	A SO 506650	0°00'00"	23.52 A	SO 506650	Class B
UNMK 300 SO 506650	UNMK 301 SO 506650	ob168	182°00'00"	A SO 506650	0°00'00"	16.94 A	SO 506650	Class B
UNMK 301 SO 506650	UNMK 302 SO 506650	ob169	193°42'00"	A SO 506650	0°00'00"	25.21 A	SO 506650	Class B
UNMK 302 SO 506650	UNMK 303 SO 506650	ob170	210°18'00"	A SO 506650	0°00'00"	18.14 A	SO 506650	Class B
UNMK 303 SO 506650	UNMK 304 SO 506650	ob171	206°21'00"	A SO 506650	0°00'00"	23.90 A	SO 506650	Class B
UNMK 304 SO 506650	UNMK 305 SO 506650	ob172	217°23'00"	A SO 506650	0°00'00"	30.82 A	SO 506650	Class B
UNMK 305 SO 506650	UNMK 306 SO 506650	ob173	223°04'00"	A SO 506650	0°00'00"	27.88 A	SO 506650	Class B
UNMK 306 SO 506650	UNMK 307 SO 506650	ob174	226°39'00"	A SO 506650	0°00'00"	30.07 A	SO 506650	Class B
UNMK 307 SO 506650	UNMK 308 SO 506650	ob175	231°08'00"	A SO 506650	0°00'00"	37.54 A	SO 506650	Class B
UNMK 308 SO 506650	UNMK 309 SO 506650	ob176	239°50'00"	A SO 506650	0°00'00"	43.31 A	SO 506650	Class B
UNMK 309 SO 506650	UNMK 310 SO 506650	ob177	225°08'00"	A SO 506650	0°00'00"	32.87 A	SO 506650	Class B
UNMK 310 SO 506650	UNMK 311 SO 506650	ob178	207°56'00"	A SO 506650	0°00'00"	23.67 A	SO 506650	Class B
UNMK 311 SO 506650	UNMK 312 SO 506650	ob179	205°49'00"	A SO 506650	0°00'00"	29.76 A	SO 506650	Class B
UNMK 312 SO 506650	UNMK 313 SO 506650	ob180	187°56'00"	A SO 506650	0°00'00"	38.62 A	SO 506650	Class B
UNMK 313 SO 506650	UNMK 314 SO 506650	ob181	176°32'00"	A SO 506650	0°00'00"	24.00 A	SO 506650	Class B
UNMK 314 SO 506650	UNMK 315 SO 506650	ob182	164°05'00"	A SO 506650	0°00'00"	16.28 A	SO 506650	Class B
UNMK 315 SO 506650	UNMK 316 SO 506650	ob183	151°32'00"	A SO 506650	0°00'00"	22.60 A	SO 506650	Class B
UNMK 316 SO 506650	UNMK 317 SO 506650	ob184	142°13'00"	A SO 506650	0°00'00"	25.92 A	SO 506650	Class B
UNMK 317 SO 506650	UNMK 318 SO 506650	ob185	140°32'00"	A SO 506650	0°00'00"	30.05 A	SO 506650	Class B
UNMK 318 SO 506650	UNMK 319 SO 506650	ob186	135°45'00"	A SO 506650	0°00'00"	30.67 A	SO 506650	Class B
UNMK 319 SO 506650	UNMK 320 SO 506650	ob187	125°23'00"	A SO 506650	0°00'00"	35.78 A	SO 506650	Class B
UNMK 320 SO 506650	UNMK 321 SO 506650	ob188	123°30'00"	A SO 506650	0°00'00"	34.26 A	SO 506650	Class B

Mark and Vector

Survey Number DP 550103

Meridional Circuit Nelson 2000

From	To	Code	Bearing	Adpt Surv	Bearing Correction	Distance	Adpt Surv	Class
UNMK 321 SO 506650	UNMK 322 SO 506650	ob189	124°42'00"	A SO 506650	0°00'00"	19.26 A	SO 506650	Class B
UNMK 322 SO 506650	UNMK 323 SO 506650	ob190	206°27'00"	A SO 506650	0°00'00"	14.59 A	SO 506650	Class B
UNMK 323 SO 506650	UNMK 324 SO 506650	ob191	206°13'00"	A SO 506650	0°00'00"	17.08 A	SO 506650	Class B
UNMK 324 SO 506650	UNMK 325 SO 506650	ob192	217°34'00"	A SO 506650	0°00'00"	17.66 A	SO 506650	Class B
UNMK 325 SO 506650	UNMK 326 SO 506650	ob193	220°20'00"	A SO 506650	0°00'00"	30.78 A	SO 506650	Class B
UNMK 326 SO 506650	UNMK 327 SO 506650	ob194	213°21'00"	A SO 506650	0°00'00"	19.71 A	SO 506650	Class B
UNMK 327 SO 506650	UNMK 328 SO 506650	ob195	223°16'00"	A SO 506650	0°00'00"	32.79 A	SO 506650	Class B
UNMK 328 SO 506650	UNMK 329 SO 506650	ob196	238°24'00"	A SO 506650	0°00'00"	36.33 A	SO 506650	Class B
UNMK 329 SO 506650	UNMK 330 SO 506650	ob197	242°54'00"	A SO 506650	0°00'00"	21.78 A	SO 506650	Class B
UNMK 330 SO 506650	UNMK 331 SO 506650	ob198	234°52'00"	A SO 506650	0°00'00"	38.02 A	SO 506650	Class B
UNMK 331 SO 506650	UNMK 332 SO 506650	ob199	225°00'00"	A SO 506650	0°00'00"	25.58 A	SO 506650	Class B
UNMK 332 SO 506650	UNMK 333 SO 506650	ob200	212°26'00"	A SO 506650	0°00'00"	30.07 A	SO 506650	Class B
UNMK 333 SO 506650	UNMK 334 SO 506650	ob201	209°16'00"	A SO 506650	0°00'00"	27.13 A	SO 506650	Class B
UNMK 334 SO 506650	UNMK 335 SO 506650	ob202	231°05'00"	A SO 506650	0°00'00"	18.18 A	SO 506650	Class B
UNMK 335 SO 506650	UNMK 336 SO 506650	ob203	251°08'00"	A SO 506650	0°00'00"	15.90 A	SO 506650	Class B
UNMK 336 SO 506650	UNMK 337 SO 506650	ob204	256°54'00"	A SO 506650	0°00'00"	26.27 A	SO 506650	Class B
UNMK 337 SO 506650	UNMK 338 SO 506650	ob205	245°26'00"	A SO 506650	0°00'00"	15.47 A	SO 506650	Class B
UNMK 338 SO 506650	UNMK 339 SO 506650	ob206	226°44'00"	A SO 506650	0°00'00"	17.65 A	SO 506650	Class B
UNMK 339 SO 506650	UNMK 340 SO 506650	ob207	203°11'00"	A SO 506650	0°00'00"	13.65 A	SO 506650	Class B
UNMK 340 SO 506650	UNMK 341 SO 506650	ob208	169°44'00"	A SO 506650	0°00'00"	13.46 A	SO 506650	Class B
UNMK 341 SO 506650	UNMK 342 SO 506650	ob209	182°07'00"	A SO 506650	0°00'00"	18.06 A	SO 506650	Class B
UNMK 342 SO 506650	UNMK 343 SO 506650	ob210	182°10'00"	A SO 506650	0°00'00"	14.12 A	SO 506650	Class B
UNMK 343 SO 506650	PEG 62 SO 522617	ob211	208°59'00"	A SO 506650	0°00'00"	11.11 A	SO 506650	Class B
UNMK (20) SO 7060	UNMK (4) SO 7060	ob212	334°27'30"	A SO 7060	-0°00'30"	696.04 A	SO 7060	Class BD

Mark and Vector

Survey Number DP 550103

Meridional Circuit Nelson 2000

From	To	Code	Bearing	Adpt Surv	Bearing Correction	Distance	Adpt Surv	Class
UNMK (4) SO 7060	UNMK (17) SO 7060	ob213	62°51'30"	A SO 7060	-0°00'30"	7.62 A	SO 7060	Class B
UNMK (17) SO 7060	UNMK (2) SO 7060	ob214	24°08'30"	A SO 7060	-0°00'30"	65.00 A	SO 7060	Class B
UNMK (2) SO 7060	UNMK (1) SO 7060	ob215	41°57'30"	A SO 7060	-0°00'30"	96.88 A	SO 7060	Class B
UNMK (1) SO 7060	UNMK (6) SO 7060	ob216	34°19'30"	A SO 7060	-0°00'30"	64.64 A	SO 7060	Class B
UNMK (6) SO 7060	UNMK (8) SO 7060	ob217	52°00'30"	A SO 7060	-0°00'30"	53.93 A	SO 7060	Class B
UNMK (8) SO 7060	UNMK (9) SO 7060	ob218	30°20'30"	A SO 7060	-0°00'30"	58.56 A	SO 7060	Class B
UNMK (9) SO 7060	UNMK (3) SO 7060	ob219	42°20'30"	A SO 7060	-0°00'30"	55.96 A	SO 7060	Class B
UNMK (3) SO 7060	UNMK (5) SO 7060	ob220	28°43'30"	A SO 7060	-0°00'30"	103.04 A	SO 7060	Class B
UNMK (5) SO 7060	UNMK (14) SO 7060	ob221	10°52'30"	A SO 7060	-0°00'30"	61.46 A	SO 7060	Class B
UNMK (14) SO 7060	UNMK (10) SO 7060	ob222	26°36'30"	A SO 7060	-0°00'30"	88.78 A	SO 7060	Class B
UNMK (10) SO 7060	UNMK (7) SO 7060	ob223	39°25'30"	A SO 7060	-0°00'30"	73.97 A	SO 7060	Class B
UNMK (7) SO 7060	UNMK (16) SO 7060	ob224	115°04'30"	A SO 7060	-0°00'30"	37.40 A	SO 7060	Class B
UNMK (16) SO 7060	UNMK (19) SO 7060	ob225	99°06'30"	A SO 7060	-0°00'30"	111.95 A	SO 7060	Class B
UNMK (19) SO 7060	UNMK (13) SO 7060	ob226	76°54'30"	A SO 7060	-0°00'30"	34.46 A	SO 7060	Class B
UNMK (13) SO 7060	UNMK (11) SO 7060	ob227	87°34'30"	A SO 7060	-0°00'30"	78.11 A	SO 7060	Class B
UNMK (11) SO 7060	UNMK (12) SO 7060	ob228	88°42'30"	A DP 350533	0°00'00"	70.97 A	DP 350533	Class B
UNMK (12) SO 7060	UNMK (18) SO 7060	ob229	61°39'30"	A SO 7060	-0°00'30"	71.86 A	SO 7060	Class B
UNMK (18) SO 7060	PEG 61 SO 522617	ob230	51°46'30"	A SO 7060	-0°00'30"	49.08 A	SO 506650	Class B
IS XXVI DP 350533	PEG 90 SO 522617	ob26	231°03'10"	A SO 522617	0°00'00"	390.45 A	SO 522617	
UNMK 551 DP 550103	UNMK 13 DP 550103	ob71	50°05'00"	C		15.85 C		Class BD
UNMK 13 DP 550103	UNMK 12 DP 550103	ob231	78°29'00"	C		20.86 C		Class B
UNMK 12 DP 550103	UNMK 11 DP 550103	ob232	83°41'00"	C		21.99 C		Class B
UNMK 11 DP 550103	UNMK 10 DP 550103	ob233	77°26'00"	C		14.90 C		Class B
UNMK 10 DP 550103	UNMK 9 DP 550103	ob234	65°30'00"	C		17.09 C		Class B

Mark and Vector

Survey Number DP 550103

Meridional Circuit Nelson 2000

From	To	Code	Bearing	Adpt Surv	Bearing Correction	Distance	Adpt Surv	Class
UNMK 9 DP 550103	UNMK 8 DP 550103	ob235	58°11'00"	C		10.98 C		Class B
UNMK 8 DP 550103	PEG 62 SO 522617	ob236	30°38'00"	C		1.72 C		Class B
IB 1 SO 506650	IS XXVII DP 350533	ob2	172°04'00"	M		522.06 M		
IB 1 SO 506650	IT 1 DP 550103	ob3	195°52'55"	M		780.63 M		
IB 1 SO 506650	PEG 553 DP 550103	ob5	72°36'00"	M		27.36 M		
IB 1 SO 506650	PEG 2 DP 550103	ob4	30°50'00"	M		29.11 M		
IB 1 SO 506650	PEG 550 DP 550103	ob6	316°18'30"	M		252.37 M		
IB 1 SO 506650	IB 11 SO 506650	ob7	23°24'55"	M		763.33 M		
IB 1 SO 506650	IS 11 SO 522617	ob8	343°03'35"	M		987.40 M		
IB 1 SO 506650	IB 8 SO 506650	ob9	315°26'55"	M		272.33 M		
IS 11 SO 522617	IB 8 SO 506650	ob237	172°39'45"	A	SO 522617	0°00'00" 756.67 A	SO 522617	
F (Rintoul SD)	E2 LUCY CREEK KNOB	ob238	354°10'36"	A	SO 506650	0°00'00" 2,817.79 A	SO 506650	
IB 1 SO 506650	F (Rintoul SD)	ob10	91°30'38"	A	SO 506650	0°00'00" 2,346.81 A	SO 506650	
IB 1 SO 506650	PILLAR 3 DP 550103	ob0	344°24'54"	M		757.15 M		
IB 1 SO 506650	PILLAR 2 DP 568436	ob1	345°17'13"	M		1,209.42 M		
PILLAR 3 DP 550103	PILLAR 2 DP 568436	ob239	346°44'50"	M		452.50 M		
UNMK 284 DP 550103	UNMK 265 DP 550103	ob245	220°05'20"	A	SO 506650	0°00'00" 9.75 C		Class B
UNMK 265 DP 550103	PEG 55 SO 522617	ob247	220°05'20"	A	SO 506650	0°00'00" 11.52 C		Class B
UNMK 291 DP 550103	UNMK 292 DP 550103	ob242	143°16'00"	C		27.91 C		Class B
UNMK 292 DP 550103	UNMK 265 DP 550103	ob248	175°00'00"	C		2.85 C		Class B
UNMK 290 DP 550103	UNMK 284 DP 550103	ob240	143°16'00"	C		32.45 C		Class B
UNMK 285 DP 550103	IS 60 SO 522617	ob250	147°55'00"	A	SO 506650	0°00'00" 15.38 C		Class B
UNMK 286 DP 550103	PEG 54 SO 522617	ob252	134°42'40"	A	SO 506650	0°00'00" 76.87 C		Class B
UNMK 412 DP 550103	UNMK 413 DP 550103	ob253	51°46'30"	A	SO 6114	-0°00'30" 8.01 C		Class B
UNMK 413 DP 550103	PEG 2 DP 550103	ob254	51°46'30"	A	SO 6114	-0°00'30" 33.39 C		Class B
UNMK 414 DP 550103	UNMK 415 DP 550103	ob256	51°46'30"	A	SO 7060	-0°00'30" 8.01 C		Class B

Mark and Vector

Survey Number DP 550103

Meridional Circuit Nelson 2000

From	To	Code	Bearing	Adpt Surv	Bearing Correction	Distance	Adpt Surv	Class
UNMK 415 DP 550103	PEG 553 DP 550103	ob258	51°46'30"	A SO 7060	-0°00'30"	31.39 C		Class B
UNMK 416 DP 550103	UNMK 89 SO 506650	ob259	219°50'00"	A SO 506650	0°00'00"	16.78 C		Class B
UNMK 417 DP 550103	PEG 88 SO 522617	ob261	250°29'00"	A SO 506650	0°00'00"	18.75 C		Class B
IT 1 DP 550103	UNMK 418 DP 550103	ob22	232°17'00"	C		120.43 C		
IT 1 DP 550103	UNMK 419 DP 550103	ob23	231°48'40"	C		138.59 C		
PEG 16 DP 350533	UNMK 291 DP 550103	ob86	24°46'00"	A SO 506650	0°00'00"	1.10 C		Class B
UNMK 291 DP 550103	UNMK 290 DP 550103	ob243	24°46'00"	A SO 506650	0°00'00"	9.10 C		Class B
UNMK 290 DP 550103	UNMK 352 SO 506650	ob241	24°46'00"	A SO 506650	0°00'00"	10.60 C		Class B
IB 5 SO 506650	UNMK (20) SO 7060	ob81	256°31'00"	C		771.66 C		
IT 1 DP 550103	IB 3 SO 506650	ob19	170°33'40"	C		686.36 C		
IB 3 SO 506650	IS XXVII DP 350533	ob79	10°45'45"	C		927.14 C		
UNMK 284 DP 550103	UNMK 353 DP 550103	ob244	143°16'00"	C		2.07 C		Class B
UNMK 353 DP 550103	UNMK 354 DP 550103	ob263	175°00'00"	C		15.58 C		Class B
UNMK 354 DP 550103	UNMK 355 DP 550103	ob264	196°47'00"	C		17.66 C		Class B
UNMK 355 DP 550103	UNMK 356 DP 550103	ob265	215°13'00"	C		42.98 C		Class B
UNMK 356 DP 550103	UNMK 357 DP 550103	ob266	226°56'00"	C		30.89 C		Class B
UNMK 357 DP 550103	UNMK 358 DP 550103	ob267	230°02'00"	C		36.30 C		Class B
UNMK 358 DP 550103	UNMK 359 DP 550103	ob268	222°57'00"	C		35.68 C		Class B
UNMK 359 DP 550103	UNMK 360 DP 550103	ob269	216°12'00"	C		27.49 C		Class B
UNMK 360 DP 550103	UNMK 361 DP 550103	ob270	244°21'00"	C		24.73 C		Class B
UNMK 361 DP 550103	UNMK 362 DP 550103	ob271	263°32'00"	C		30.55 C		Class B
UNMK 362 DP 550103	UNMK 363 DP 550103	ob272	242°10'00"	C		10.85 C		Class B
UNMK 363 DP 550103	UNMK 364 DP 550103	ob273	215°59'00"	C		26.90 C		Class B
UNMK 364 DP 550103	UNMK 365 DP 550103	ob274	207°47'40"	C		109.51 C		Class B

Mark and Vector

Survey Number DP 550103

Meridional Circuit Nelson 2000

From	To	Code	Bearing	Adpt Surv	Bearing Correction	Distance	Adpt Surv	Class
UNMK 365 DP 550103	UNMK 366 DP 550103	ob275	219°58'00"	C		15.57 C		Class B
UNMK 366 DP 550103	UNMK 367 DP 550103	ob276	242°07'00"	C		12.60 C		Class B
UNMK 367 DP 550103	UNMK 368 DP 550103	ob277	256°15'00"	C		14.16 C		Class B
UNMK 368 DP 550103	UNMK 369 DP 550103	ob278	230°33'00"	C		4.20 C		Class B
UNMK 369 DP 550103	UNMK 370 DP 550103	ob279	186°45'00"	C		2.43 C		Class B
UNMK 370 DP 550103	UNMK 371 DP 550103	ob280	141°25'00"	C		4.28 C		Class B
UNMK 371 DP 550103	UNMK 372 DP 550103	ob281	105°07'00"	C		2.92 C		Class B
UNMK 372 DP 550103	UNMK 373 DP 550103	ob282	87°21'00"	C		6.07 C		Class B
UNMK 373 DP 550103	UNMK 374 DP 550103	ob283	73°02'00"	C		15.34 C		Class B
UNMK 374 DP 550103	UNMK 375 DP 550103	ob284	62°00'00"	C		10.20 C		Class B
UNMK 375 DP 550103	UNMK 376 DP 550103	ob285	44°30'00"	C		37.24 C		Class B
UNMK 376 DP 550103	UNMK 377 DP 550103	ob286	43°57'00"	C		31.82 C		Class B
UNMK 377 DP 550103	UNMK 378 DP 550103	ob287	52°32'00"	C		22.27 C		Class B
UNMK 378 DP 550103	UNMK 379 DP 550103	ob288	65°48'00"	C		22.75 C		Class B
UNMK 379 DP 550103	UNMK 380 DP 550103	ob289	58°57'00"	C		32.58 C		Class B
UNMK 380 DP 550103	UNMK 381 DP 550103	ob290	72°33'00"	C		17.23 C		Class B
UNMK 381 DP 550103	UNMK 382 DP 550103	ob291	85°16'00"	C		18.03 C		Class B
UNMK 382 DP 550103	UNMK 383 DP 550103	ob292	112°05'00"	C		23.43 C		Class B
UNMK 383 DP 550103	UNMK 384 DP 550103	ob293	119°03'00"	C		22.38 C		Class B
UNMK 384 DP 550103	UNMK 385 DP 550103	ob294	102°37'00"	C		16.56 C		Class B
UNMK 385 DP 550103	UNMK 386 DP 550103	ob295	86°31'00"	C		12.12 C		Class B
UNMK 386 DP 550103	UNMK 387 DP 550103	ob296	73°36'00"	C		14.83 C		Class B
UNMK 387 DP 550103	UNMK 388 DP 550103	ob297	61°34'00"	C		17.79 C		Class B
UNMK 388 DP 550103	UNMK 389 DP 550103	ob298	46°42'00"	C		32.35 C		Class B

Mark and Vector

Survey Number DP 550103

Meridional Circuit Nelson 2000

From	To	Code	Bearing	Adpt Surv	Bearing Correction	Distance	Adpt Surv	Class
UNMK 389 DP 550103	UNMK 390 DP 550103	ob299	45°48'00"	C		46.92 C		Class B
UNMK 390 DP 550103	UNMK 391 DP 550103	ob300	75°04'00"	C		19.17 C		Class B
UNMK 391 DP 550103	UNMK 392 DP 550103	ob301	99°23'00"	C		15.30 C		Class B
UNMK 392 DP 550103	UNMK 393 DP 550103	ob302	149°05'00"	C		14.66 C		Class B
UNMK 393 DP 550103	UNMK 394 DP 550103	ob303	181°46'00"	C		17.85 C		Class B
UNMK 394 DP 550103	UNMK 395 DP 550103	ob304	195°37'00"	C		26.04 C		Class B
UNMK 395 DP 550103	UNMK 396 DP 550103	ob305	185°49'00"	C		11.32 C		Class B
UNMK 396 DP 550103	UNMK 397 DP 550103	ob306	171°51'00"	C		35.30 C		Class B
UNMK 397 DP 550103	UNMK 398 DP 550103	ob307	158°53'00"	C		5.29 C		Class B
UNMK 398 DP 550103	UNMK 399 DP 550103	ob308	138°09'00"	C		5.98 C		Class B
UNMK 399 DP 550103	UNMK 400 DP 550103	ob309	120°34'00"	C		8.47 C		Class B
UNMK 400 DP 550103	UNMK 401 DP 550103	ob310	122°37'00"	C		13.40 C		Class B
UNMK 401 DP 550103	UNMK 402 DP 550103	ob311	152°17'00"	C		13.27 C		Class B
UNMK 402 DP 550103	UNMK 403 DP 550103	ob312	174°30'00"	C		27.06 C		Class B
UNMK 403 DP 550103	UNMK 404 DP 550103	ob313	168°51'00"	C		13.51 C		Class B
UNMK 404 DP 550103	UNMK 405 DP 550103	ob314	158°49'00"	C		13.70 C		Class B
UNMK 405 DP 550103	UNMK 406 DP 550103	ob315	150°25'00"	C		29.09 C		Class B
UNMK 406 DP 550103	UNMK 407 DP 550103	ob316	142°16'00"	C		32.05 C		Class B
UNMK 407 DP 550103	UNMK 408 DP 550103	ob317	135°15'00"	C		30.84 C		Class B
UNMK 408 DP 550103	UNMK 409 DP 550103	ob318	124°37'00"	C		27.18 C		Class B
UNMK 409 DP 550103	UNMK 410 DP 550103	ob319	144°51'00"	C		48.36 C		Class B
UNMK 410 DP 550103	UNMK 411 DP 550103	ob320	141°37'00"	C		31.23 C		Class B
UNMK 411 DP 550103	UNMK 285 DP 550103	ob321	135°30'00"	C		16.03 C		Class B
UNMK 265 DP 550103	UNMK 293 DP 550103	ob246	175°00'00"	C		8.92 C		Class B

Mark and Vector

Survey Number DP 550103

Meridional Circuit Nelson 2000

From	To	Code	Bearing	Adpt Surv	Bearing Correction	Distance	Adpt Surv	Class
UNMK 293 DP 550103	UNMK 294 DP 550103	ob322	196°47'00"	C		14.82 C		Class B
UNMK 294 DP 550103	UNMK 295 DP 550103	ob323	215°13'00"	C		40.86 C		Class B
UNMK 295 DP 550103	UNMK 296 DP 550103	ob324	226°56'00"	C		29.86 C		Class B
UNMK 296 DP 550103	UNMK 297 DP 550103	ob325	230°02'00"	C		36.58 C		Class B
UNMK 297 DP 550103	UNMK 298 DP 550103	ob326	222°57'00"	C		36.65 C		Class B
UNMK 298 DP 550103	UNMK 299 DP 550103	ob327	216°12'00"	C		25.96 C		Class B
UNMK 299 DP 550103	UNMK 300 DP 550103	ob328	244°21'00"	C		21.38 C		Class B
UNMK 300 DP 550103	UNMK 301 DP 550103	ob329	263°32'00"	C		30.71 C		Class B
UNMK 301 DP 550103	UNMK 302 DP 550103	ob330	242°10'00"	C		14.22 C		Class B
UNMK 302 DP 550103	UNMK 303 DP 550103	ob331	215°59'00"	C		25.82 C		Class B
UNMK 303 DP 550103	UNMK 304 DP 550103	ob332	207°47'40"	C		110.34 C		Class B
UNMK 304 DP 550103	UNMK 305 DP 550103	ob333	219°58'00"	C		15.57 C		Class B
UNMK 305 DP 550103	UNMK 306 DP 550103	ob334	242°07'00"	C		10.04 C		Class B
UNMK 306 DP 550103	UNMK 307 DP 550103	ob335	256°15'00"	C		15.00 C		Class B
UNMK 307 DP 550103	UNMK 308 DP 550103	ob336	230°33'00"	C		9.24 C		Class B
UNMK 308 DP 550103	UNMK 309 DP 550103	ob337	186°45'00"	C		8.99 C		Class B
UNMK 309 DP 550103	UNMK 310 DP 550103	ob338	141°25'00"	C		10.24 C		Class B
UNMK 310 DP 550103	UNMK 311 DP 550103	ob339	105°07'00"	C		6.79 C		Class B
UNMK 311 DP 550103	UNMK 312 DP 550103	ob340	87°21'00"	C		8.33 C		Class B
UNMK 312 DP 550103	UNMK 313 DP 550103	ob341	73°02'00"	C		17.12 C		Class B
UNMK 313 DP 550103	UNMK 314 DP 550103	ob342	62°00'00"	C		12.20 C		Class B
UNMK 314 DP 550103	UNMK 315 DP 550103	ob343	44°30'00"	C		38.51 C		Class B
UNMK 315 DP 550103	UNMK 316 DP 550103	ob344	43°57'00"	C		31.26 C		Class B
UNMK 316 DP 550103	UNMK 317 DP 550103	ob345	52°32'00"	C		20.74 C		Class B

Mark and Vector

Survey Number DP 550103

Meridional Circuit Nelson 2000

From	To	Code	Bearing	Adpt Surv	Bearing Correction	Distance	Adpt Surv	Class
UNMK 317 DP 550103	UNMK 318 DP 550103	ob346	65°48'00"	C		22.30 C		Class B
UNMK 318 DP 550103	UNMK 319 DP 550103	ob347	58°57'00"	C		32.10 C		Class B
UNMK 319 DP 550103	UNMK 320 DP 550103	ob348	72°33'00"	C		15.38 C		Class B
UNMK 320 DP 550103	UNMK 321 DP 550103	ob349	85°16'00"	C		15.23 C		Class B
UNMK 321 DP 550103	UNMK 322 DP 550103	ob350	112°05'00"	C		21.04 C		Class B
UNMK 322 DP 550103	UNMK 323 DP 550103	ob351	119°03'00"	C		23.05 C		Class B
UNMK 323 DP 550103	UNMK 324 DP 550103	ob352	102°37'00"	C		18.84 C		Class B
UNMK 324 DP 550103	UNMK 325 DP 550103	ob353	86°31'00"	C		14.16 C		Class B
UNMK 325 DP 550103	UNMK 326 DP 550103	ob354	73°36'00"	C		16.58 C		Class B
UNMK 326 DP 550103	UNMK 327 DP 550103	ob355	61°34'00"	C		19.68 C		Class B
UNMK 327 DP 550103	UNMK 328 DP 550103	ob356	46°42'00"	C		33.46 C		Class B
UNMK 328 DP 550103	UNMK 329 DP 550103	ob357	45°48'00"	C		44.89 C		Class B
UNMK 329 DP 550103	UNMK 330 DP 550103	ob358	75°04'00"	C		15.36 C		Class B
UNMK 330 DP 550103	UNMK 331 DP 550103	ob359	99°23'00"	C		9.87 C		Class B
UNMK 331 DP 550103	UNMK 332 DP 550103	ob360	149°05'00"	C		8.61 C		Class B
UNMK 332 DP 550103	UNMK 333 DP 550103	ob361	181°46'00"	C		14.53 C		Class B
UNMK 333 DP 550103	UNMK 334 DP 550103	ob362	195°37'00"	C		25.75 C		Class B
UNMK 334 DP 550103	UNMK 335 DP 550103	ob363	185°49'00"	C		12.99 C		Class B
UNMK 335 DP 550103	UNMK 336 DP 550103	ob364	171°51'00"	C		37.19 C		Class B
UNMK 336 DP 550103	UNMK 337 DP 550103	ob365	158°53'00"	C		7.66 C		Class B
UNMK 337 DP 550103	UNMK 338 DP 550103	ob366	138°09'00"	C		8.69 C		Class B
UNMK 338 DP 550103	UNMK 339 DP 550103	ob367	120°34'00"	C		9.57 C		Class B
UNMK 339 DP 550103	UNMK 340 DP 550103	ob368	122°37'00"	C		11.14 C		Class B
UNMK 340 DP 550103	UNMK 341 DP 550103	ob369	152°17'00"	C		9.58 C		Class B

Mark and Vector

Survey Number DP 550103

Meridional Circuit Nelson 2000

From	To	Code	Bearing	Adpt Surv	Bearing Correction	Distance	Adpt Surv	Class
UNMK 341 DP 550103	UNMK 342 DP 550103	ob370	174°30'00"	C		25.89 C		Class B
UNMK 342 DP 550103	UNMK 343 DP 550103	ob371	168°51'00"	C		14.60 C		Class B
UNMK 343 DP 550103	UNMK 344 DP 550103	ob372	158°49'00"	C		14.99 C		Class B
UNMK 344 DP 550103	UNMK 345 DP 550103	ob373	150°25'00"	C		30.25 C		Class B
UNMK 345 DP 550103	UNMK 346 DP 550103	ob374	142°16'00"	C		33.11 C		Class B
UNMK 346 DP 550103	UNMK 347 DP 550103	ob375	135°15'00"	C		32.07 C		Class B
UNMK 347 DP 550103	UNMK 348 DP 550103	ob376	124°37'00"	C		26.50 C		Class B
UNMK 348 DP 550103	UNMK 349 DP 550103	ob377	144°51'00"	C		47.16 C		Class B
UNMK 349 DP 550103	UNMK 350 DP 550103	ob378	141°37'00"	C		31.88 C		Class B
UNMK 350 DP 550103	UNMK 351 DP 550103	ob379	135°30'00"	C		30.77 C		Class B
UNMK 351 DP 550103	UNMK 352 DP 550103	ob380	131°50'00"	C		27.76 C		Class B
UNMK 352 DP 550103	UNMK 286 DP 550103	ob381	123°00'00"	C		16.19 C		Class B
UNMK 286 DP 550103	UNMK 424 DP 550103	ob251	123°00'00"	C		22.23 C		Class B
UNMK 424 DP 550103	UNMK 425 DP 550103	ob382	128°38'00"	C		45.54 C		Class B
UNMK 425 DP 550103	UNMK 412 DP 550103	ob383	140°44'00"	C		10.90 C		Class B
UNMK 285 DP 550103	UNMK 420 DP 550103	ob249	135°30'00"	C		14.07 C		Class B
UNMK 420 DP 550103	UNMK 421 DP 550103	ob384	131°50'00"	C		26.88 C		Class B
UNMK 421 DP 550103	UNMK 422 DP 550103	ob385	123°00'00"	C		38.20 C		Class B
UNMK 422 DP 550103	UNMK 423 DP 550103	ob386	128°38'00"	C		46.78 C		Class B
UNMK 423 DP 550103	UNMK 413 DP 550103	ob387	140°44'00"	C		11.88 C		Class B
UNMK 415 DP 550103	UNMK 426 DP 550103	ob257	140°41'00"	C		12.69 C		Class B
UNMK 426 DP 550103	UNMK 427 DP 550103	ob388	160°11'00"	C		21.17 C		Class B
UNMK 427 DP 550103	UNMK 428 DP 550103	ob389	181°32'00"	C		22.19 C		Class B
UNMK 428 DP 550103	UNMK 429 DP 550103	ob390	192°38'00"	C		30.63 C		Class B

Mark and Vector

Survey Number DP 550103

Meridional Circuit Nelson 2000

From	To	Code	Bearing	Adpt Surv	Bearing Correction	Distance	Adpt Surv	Class
UNMK 429 DP 550103	UNMK 430 DP 550103	ob391	213°03'00"	C		15.51 C		Class B
UNMK 430 DP 550103	UNMK 431 DP 550103	ob392	236°54'00"	C		28.64 C		Class B
UNMK 431 DP 550103	UNMK 432 DP 550103	ob393	223°39'00"	C		22.06 C		Class B
UNMK 432 DP 550103	UNMK 433 DP 550103	ob394	208°27'00"	C		40.72 C		Class B
UNMK 433 DP 550103	UNMK 434 DP 550103	ob395	193°55'00"	C		24.56 C		Class B
UNMK 434 DP 550103	UNMK 435 DP 550103	ob396	207°24'00"	C		27.98 C		Class B
UNMK 435 DP 550103	UNMK 436 DP 550103	ob397	217°21'00"	C		15.16 C		Class B
UNMK 436 DP 550103	UNMK 437 DP 550103	ob398	183°56'00"	C		17.16 C		Class B
UNMK 437 DP 550103	UNMK 438 DP 550103	ob399	144°53'00"	C		28.98 C		Class B
UNMK 438 DP 550103	UNMK 439 DP 550103	ob400	154°56'00"	C		37.80 C		Class B
UNMK 439 DP 550103	UNMK 440 DP 550103	ob401	158°52'40"	C		66.04 C		Class B
UNMK 440 DP 550103	UNMK 441 DP 550103	ob402	157°53'00"	C		61.77 C		Class B
UNMK 441 DP 550103	UNMK 442 DP 550103	ob403	154°18'00"	C		45.23 C		Class B
UNMK 442 DP 550103	UNMK 443 DP 550103	ob404	174°47'00"	C		15.06 C		Class B
UNMK 443 DP 550103	UNMK 444 DP 550103	ob405	212°11'00"	C		11.39 C		Class B
UNMK 444 DP 550103	UNMK 445 DP 550103	ob406	240°57'00"	C		36.41 C		Class B
UNMK 445 DP 550103	UNMK 446 DP 550103	ob407	236°07'00"	C		46.93 C		Class B
UNMK 446 DP 550103	UNMK 447 DP 550103	ob408	220°29'00"	C		65.34 C		Class B
UNMK 447 DP 550103	UNMK 448 DP 550103	ob409	213°21'00"	C		32.83 C		Class B
UNMK 448 DP 550103	UNMK 449 DP 550103	ob410	214°46'00"	C		19.39 C		Class B
UNMK 449 DP 550103	UNMK 450 DP 550103	ob411	227°52'00"	C		20.68 C		Class B
UNMK 450 DP 550103	UNMK 451 DP 550103	ob412	246°11'00"	C		14.67 C		Class B
UNMK 451 DP 550103	UNMK 417 DP 550103	ob413	244°28'00"	C		5.04 C		Class B
UNMK 417 DP 550103	UNMK 416 DP 550103	ob260	244°28'00"	C		22.93 C		Class B

Mark and Vector

Survey Number DP 550103

Meridional Circuit Nelson 2000

From	To	Code	Bearing	Adpt Surv	Bearing Correction	Distance	Adpt Surv	Class
UNMK 89 SO 506650	UNMK 452 DP 550103	ob68	204°12'00"	C		6.96 C		Class B
UNMK 452 DP 550103	UNMK 453 DP 550103	ob414	181°44'40"	C		56.06 C		Class B
UNMK 453 DP 550103	UNMK 454 DP 550103	ob415	214°09'00"	C		12.71 C		Class B
UNMK 454 DP 550103	UNMK 455 DP 550103	ob416	254°04'00"	C		9.51 C		Class B
UNMK 455 DP 550103	UNMK 456 DP 550103	ob417	273°31'00"	C		29.85 C		Class B
UNMK 456 DP 550103	UNMK 457 DP 550103	ob418	267°31'00"	C		16.49 C		Class B
UNMK 457 DP 550103	UNMK 458 DP 550103	ob419	251°17'00"	C		5.37 C		Class B
UNMK 458 DP 550103	UNMK 459 DP 550103	ob420	226°43'00"	C		4.11 C		Class B
UNMK 459 DP 550103	UNMK 460 DP 550103	ob421	197°53'00"	C		13.51 C		Class B
UNMK 460 DP 550103	UNMK 461 DP 550103	ob422	208°59'00"	C		19.51 C		Class B
UNMK 461 DP 550103	UNMK 462 DP 550103	ob423	210°13'00"	C		21.32 C		Class B
UNMK 462 DP 550103	UNMK 463 DP 550103	ob424	205°15'00"	C		18.34 C		Class B
UNMK 463 DP 550103	UNMK 418 DP 550103	ob425	202°29'00"	C		5.99 C		Class BD
UNMK 414 DP 550103	UNMK 503 DP 550103	ob255	140°41'00"	C		11.46 C		Class B
UNMK 503 DP 550103	UNMK 502 DP 550103	ob426	160°11'00"	C		18.29 C		Class B
UNMK 419 DP 550103	UNMK 464 DP 550103	ob262	22°52'00"	C		7.20 C		Class BD
UNMK 464 DP 550103	UNMK 465 DP 550103	ob427	22°25'00"	C		15.31 C		Class B
UNMK 465 DP 550103	UNMK 466 DP 550103	ob428	25°15'00"	C		18.89 C		Class B
UNMK 466 DP 550103	UNMK 467 DP 550103	ob429	30°13'00"	C		21.58 C		Class B
UNMK 467 DP 550103	UNMK 468 DP 550103	ob430	28°59'00"	C		18.64 C		Class B
UNMK 468 DP 550103	UNMK 469 DP 550103	ob431	17°53'00"	C		14.79 C		Class B
UNMK 469 DP 550103	UNMK 470 DP 550103	ob432	46°43'00"	C		7.91 C		Class B
UNMK 470 DP 550103	UNMK 471 DP 550103	ob433	71°17'00"	C		8.25 C		Class B
UNMK 471 DP 550103	UNMK 472 DP 550103	ob434	87°31'00"	C		18.05 C		Class B

Mark and Vector

Survey Number DP 550103

Meridional Circuit Nelson 2000

From	To	Code	Bearing	Adpt Surv	Bearing Correction	Distance	Adpt Surv	Class
UNMK 472 DP 550103	UNMK 473 DP 550103	ob435	93°31'00"	C		28.90 C		Class B
UNMK 473 DP 550103	UNMK 474 DP 550103	ob436	74°04'00"	C		5.23 C		Class B
UNMK 474 DP 550103	UNMK 475 DP 550103	ob437	34°09'00"	C		7.48 C		Class B
UNMK 475 DP 550103	UNMK 476 DP 550103	ob438	1°44'40"	C		55.45 C		Class B
UNMK 476 DP 550103	UNMK 477 DP 550103	ob439	26°02'00"	C		23.00 C		Class B
UNMK 477 DP 550103	UNMK 478 DP 550103	ob440	64°28'00"	C		36.94 C		Class B
UNMK 478 DP 550103	UNMK 479 DP 550103	ob441	66°11'00"	C		13.50 C		Class B
UNMK 479 DP 550103	UNMK 480 DP 550103	ob442	47°52'00"	C		18.47 C		Class B
UNMK 480 DP 550103	UNMK 481 DP 550103	ob443	34°46'00"	C		18.37 C		Class B
UNMK 481 DP 550103	UNMK 482 DP 550103	ob444	33°21'00"	C		33.23 C		Class B
UNMK 482 DP 550103	UNMK 483 DP 550103	ob445	40°29'00"	C		66.94 C		Class B
UNMK 483 DP 550103	UNMK 484 DP 550103	ob446	56°07'00"	C		48.37 C		Class B
UNMK 484 DP 550103	UNMK 485 DP 550103	ob447	60°57'00"	C		34.70 C		Class B
UNMK 485 DP 550103	UNMK 486 DP 550103	ob448	32°11'00"	C		6.63 C		Class B
UNMK 486 DP 550103	UNMK 487 DP 550103	ob449	354°47'00"	C		10.91 C		Class B
UNMK 487 DP 550103	UNMK 488 DP 550103	ob450	334°18'00"	C		44.03 C		Class B
UNMK 488 DP 550103	UNMK 489 DP 550103	ob451	337°53'00"	C		62.09 C		Class B
UNMK 489 DP 550103	UNMK 490 DP 550103	ob452	338°52'40"	C		65.84 C		Class B
UNMK 490 DP 550103	UNMK 491 DP 550103	ob453	334°56'00"	C		36.82 C		Class B
UNMK 491 DP 550103	UNMK 492 DP 550103	ob454	324°53'00"	C		31.12 C		Class B
UNMK 492 DP 550103	UNMK 493 DP 550103	ob455	3°56'00"	C		22.40 C		Class B
UNMK 493 DP 550103	UNMK 494 DP 550103	ob456	37°21'00"	C		16.86 C		Class B
UNMK 494 DP 550103	UNMK 495 DP 550103	ob457	27°24'00"	C		26.34 C		Class B
UNMK 495 DP 550103	UNMK 496 DP 550103	ob458	13°55'00"	C		24.63 C		Class B

Mark and Vector

Survey Number DP 550103

Meridional Circuit Nelson 2000

From	To	Code	Bearing	Adpt Surv	Bearing Correction	Distance	Adpt Surv	Class
UNMK 496 DP 550103	UNMK 497 DP 550103	ob459	28°27'00"	C		42.81 C		Class B
UNMK 497 DP 550103	UNMK 498 DP 550103	ob460	43°39'00"	C		24.06 C		Class B
UNMK 498 DP 550103	UNMK 499 DP 550103	ob461	56°54'00"	C		27.88 C		Class B
UNMK 499 DP 550103	UNMK 500 DP 550103	ob462	33°03'00"	C		12.38 C		Class B
UNMK 500 DP 550103	UNMK 501 DP 550103	ob463	12°38'00"	C		28.41 C		Class B
UNMK 501 DP 550103	UNMK 502 DP 550103	ob464	1°32'00"	C		19.90 C		Class B

Mark Name	Mark Condition	Description
AP 9 SO 506650		Alloy Pin and Survey Marker Disk on Concrete Bridge. Centre pile northern side.
E2 LUCY CREEK KNO		1.5 INCH DIAM IRON PIPE BRANDED ^
F (Rintoul SD)		1.5 INCH DIAM IRON PIPE
IB 11 SO 506650		DOWN 0.4M IN SKID SITE
IB 3 SO 506650		down 0.4m top knoll
IB 8 SO 506650		edge track - now destroyed by roadworks
IS 11 SO 522617		edge track - now destroyed by construction works
IS XXVII DP 350533		down 0.3m edge track
IT 1 DP 550103		flush edge track
PILLAR 3 DP 550103		Concrete Pillar

*** End of Report ***

Schedule / Memorandum

Land Registration District

Nelson

Survey Number

LT 550103

Territorial Authority (the Council)

Tasman District

Memorandum of Easements

Last Edited: 21 Jul 2023 10:00:36

<u>Purpose</u>	<u>Shown</u>	<u>Burdened Land</u> (<u>Servient Tenement</u>)	<u>Benefited Land</u> (<u>Dominant Tenement</u>)
Right of Way	A	Lot 2	Lot 1, Lot 4, Part Section 4 Block II Rintoul SD, Section 7 SO 506650
	E	Lot 3	Lot 1, Lot 4, Part Section 4 Block II Rintoul SD, Section 7 SO 506650

Amalgamation Conditions

Last Edited: 06 Dec 2022 09:40:40

That Lots 2 and 3 hereon be held in the same record of title.

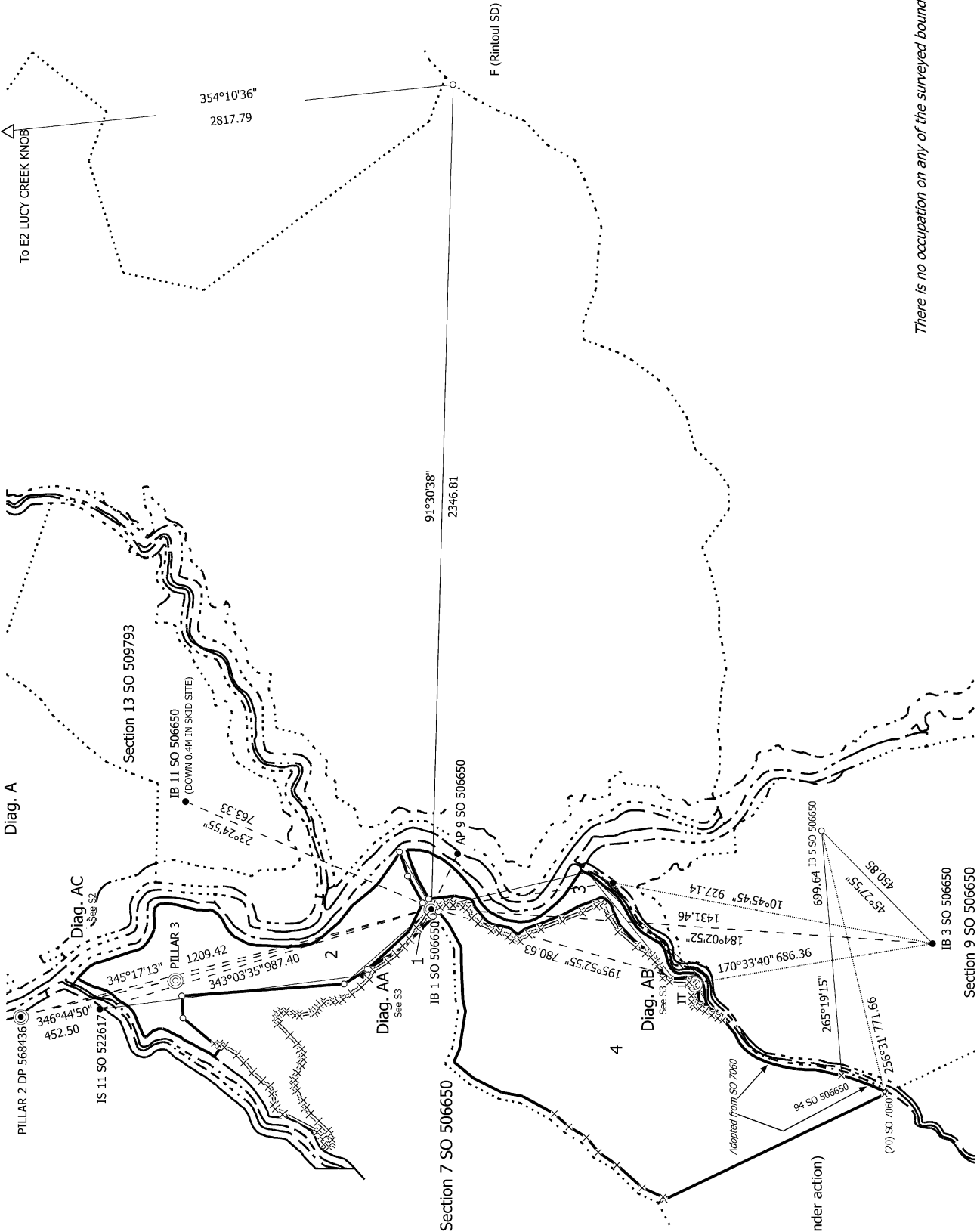
That Lots 1 and 4 hereon, Section 7 SO 506650 and Part Section 4 Block II Rintoul Survey District (Residue RT 873997) be held in the same record of title.

Land Information New Zealand (LINZ) Consultation Reference: 1799817.

Schedule of Easements

Last Edited: 21 Jul 2023 12:40:02

<u>Purpose</u>	<u>Shown</u>	<u>Burdened Land</u> (<u>Servient Tenement</u>)	<u>Benefited Land</u> (<u>Dominant Tenement</u>)
Right of Way	A	Lot 2	Section 9 SO 506650, Section 15 Block II Rintoul SD
	B	Section 7 SO 506650	Section 9 SO 506650, Section 15 Block II Rintoul SD
	C	Lot 1	Section 15 Block II Rintoul SD, Section 9 SO 506650
	D	Lot 4	Section 15 Block II Rintoul SD, Section 9 SO 506650
	E	Lot 3	Section 9 SO 506650, Section 15 Block II Rintoul SD



123044 Waimea Water Ltd
RM 2202394

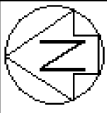
Land District: Nelson

Digitally Generated Plan
Generated on: 08/11/2023 06:23:00 Page 24 of 36

Lots 1-4 being a Subdivision of Sections 2, 3 & 8 SO 506650 and Easement over Section 7 SO 506650

Surveyor: Ephraim Daniel Jacobsen
Firm: Staig and Smith Limited
Date of Survey: 2/06/2020

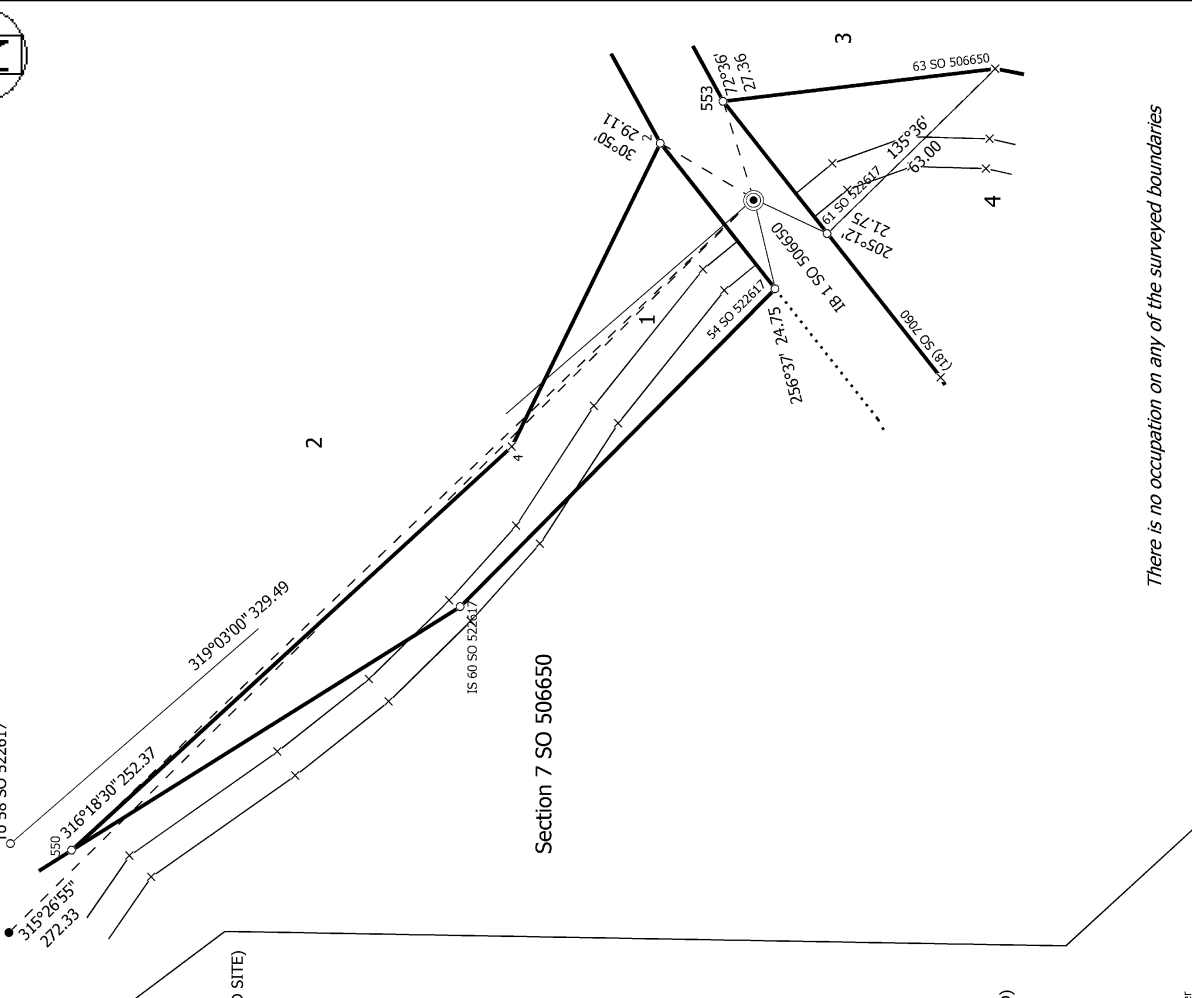
Record of Survey
LT 550103
Approved on: 8/11/2023



Diag. ACA

Diag. AC

To PILLAR 2 DP 568436
IS 11 SO 522617
Part Section 4 Blk II Rintoul SD



There is no occupation on any of the surveyed boundaries

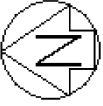
S 2/3

Record of Survey
LT 550103
Approved on: 8/11/2023

Surveyor: Ephraim Daniel Jacobsen
Firm: Steig and Smith Limited
Date of Survey: 2/06/2020

Lots 1-4 being a Subdivision of Sections 2,3 & 8 SO 506650 and Easement
over Section 7 SO 506650

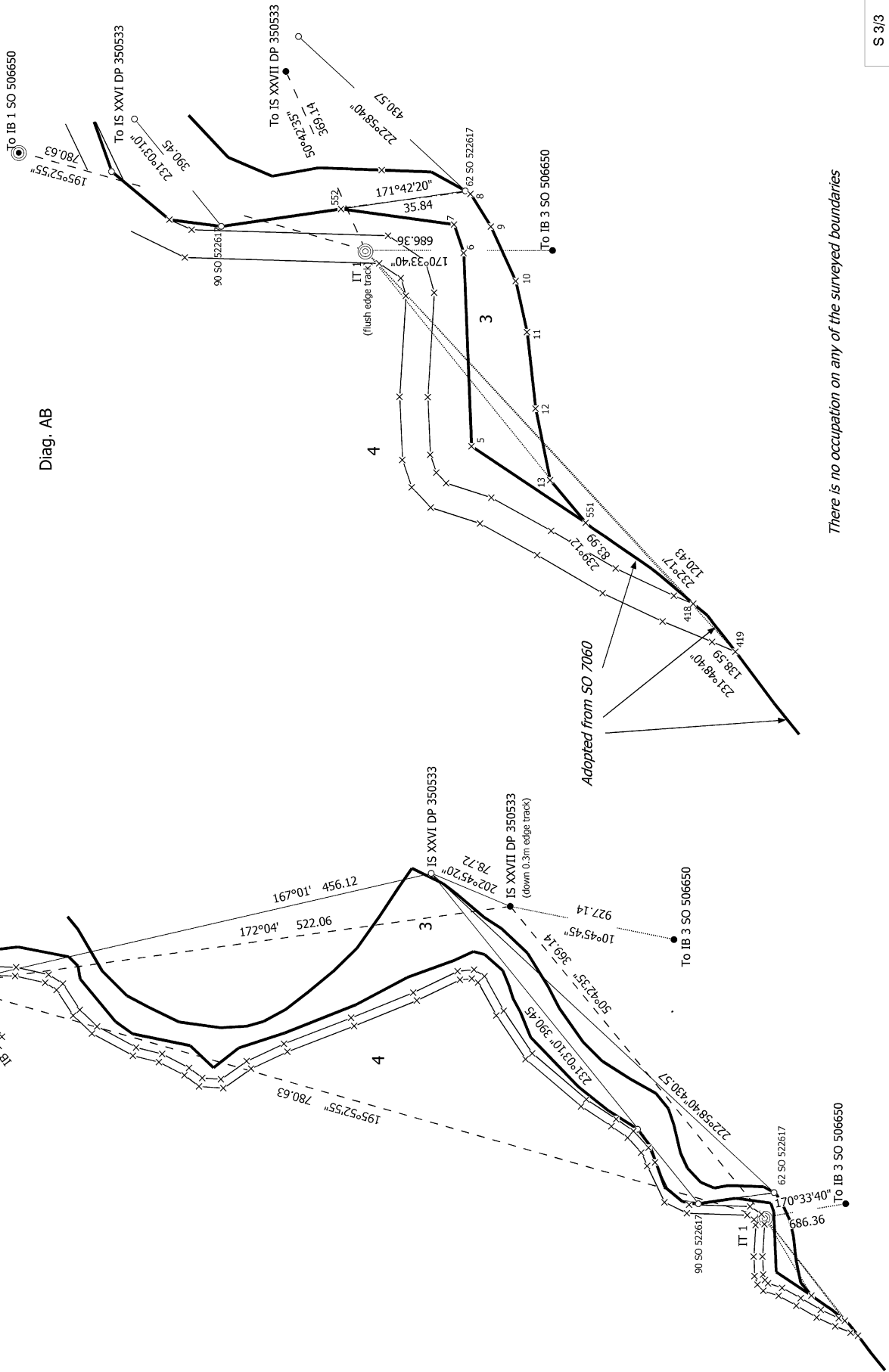
Land District: Nelson
123044 Waimea Water Ltd
RM 220294
Digitally Generated Plan
Generated on: 08/11/2023 06:23:00 Page 25 of 36



Diag. AA

Section 7 SO 506650

Diag. AB



There is no occupation on any of the surveyed boundaries

S 3/3

12304A Waimea Water Ltd
RM 220394

Land District: Nelson

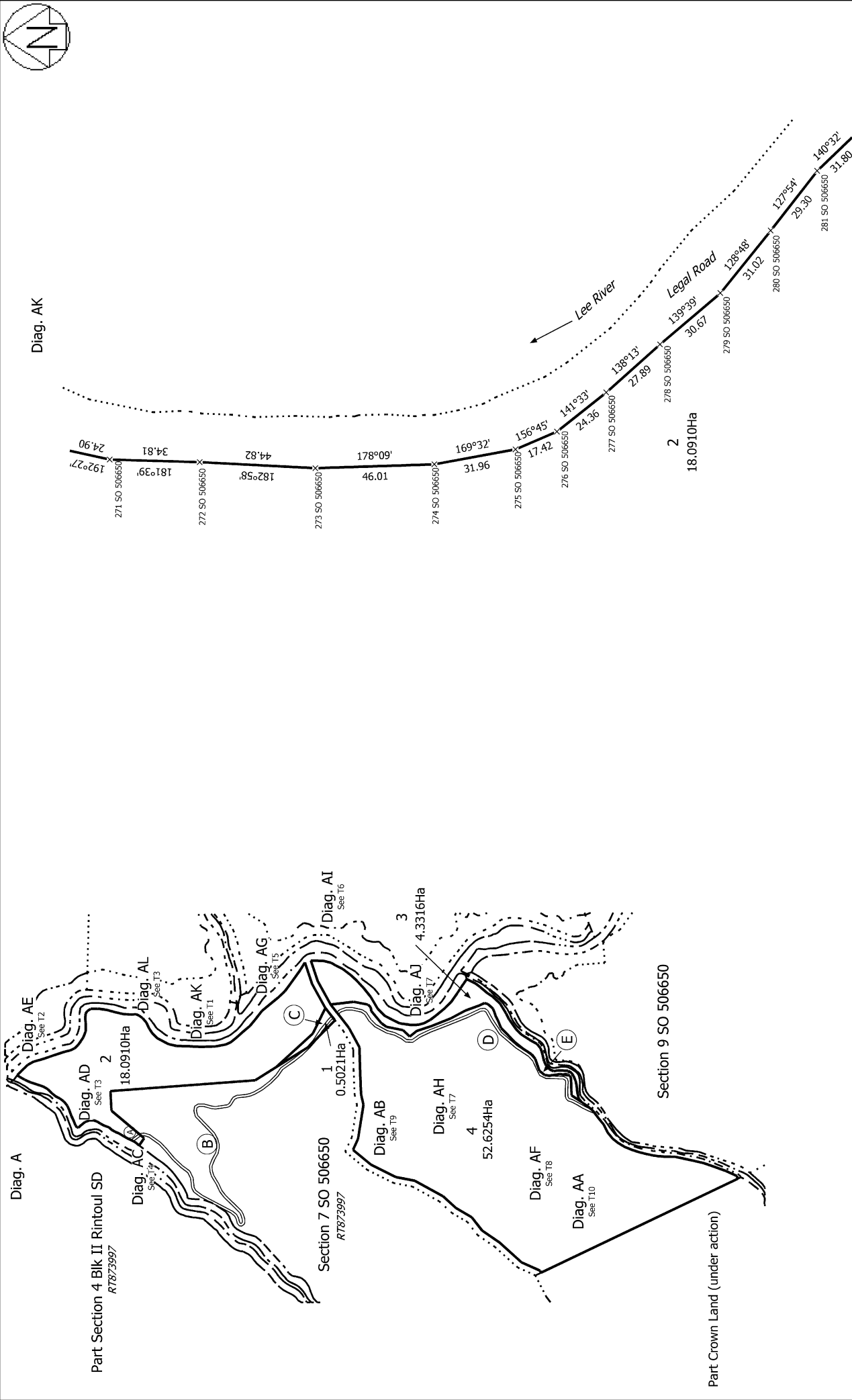
Digitally Generated Plan

Generated on: 08/11/2023 06:23:00 Page 26 of 36

Lots 1-4 being a Subdivision of Sections 2, 3 & 8 SO 506650 and Easement over Section 7 SO 506650

Surveyor: Ephraim Daniel Jacobsen
Firm: Staig and Smith Limited
Date of Survey: 2/06/2020

**Record of Survey
LT 550103**
Approved on: 8/11/2023



T 1/10

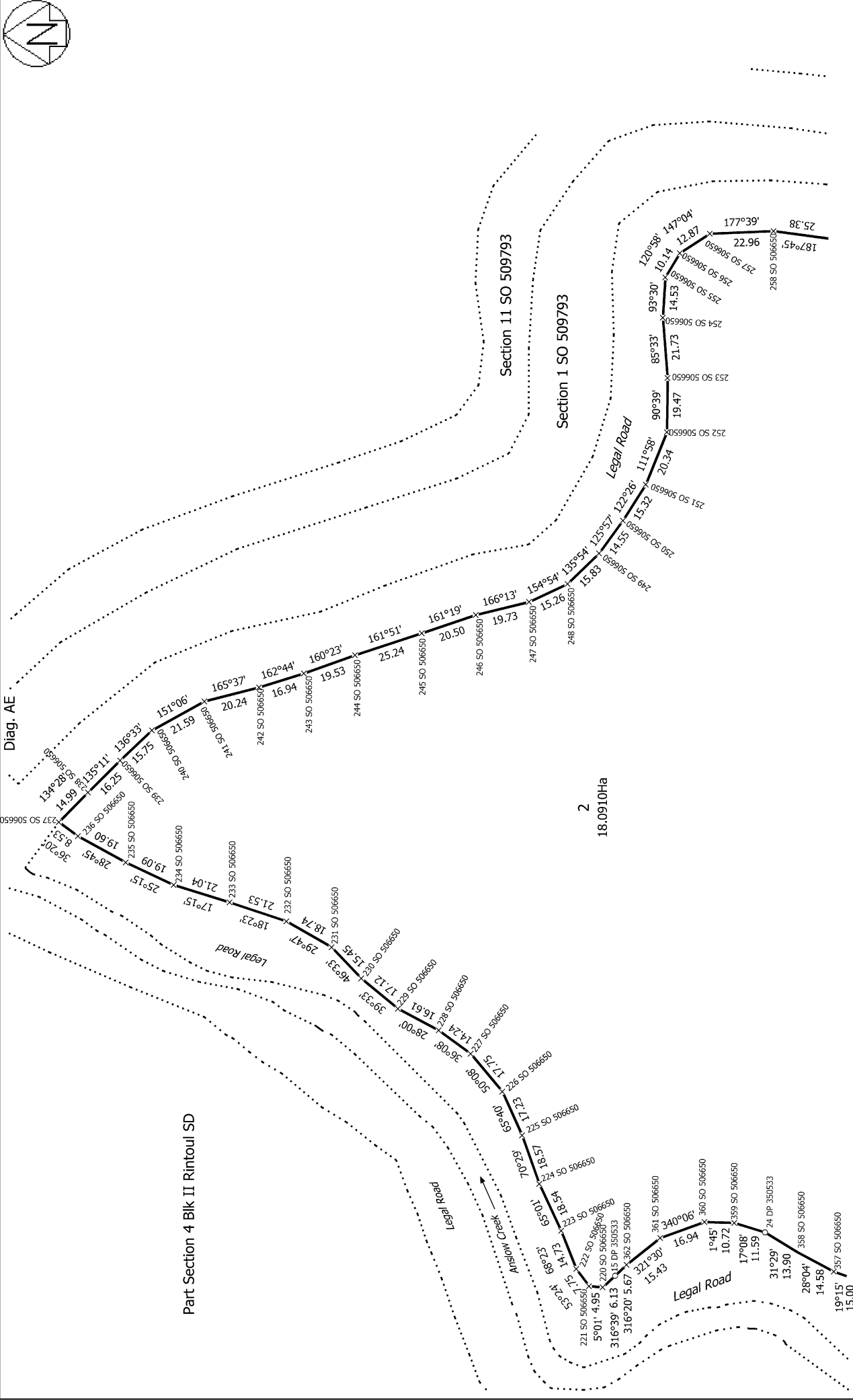
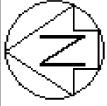
123044 Waimea Water Ltd
RW 220394

Land District: Nelson

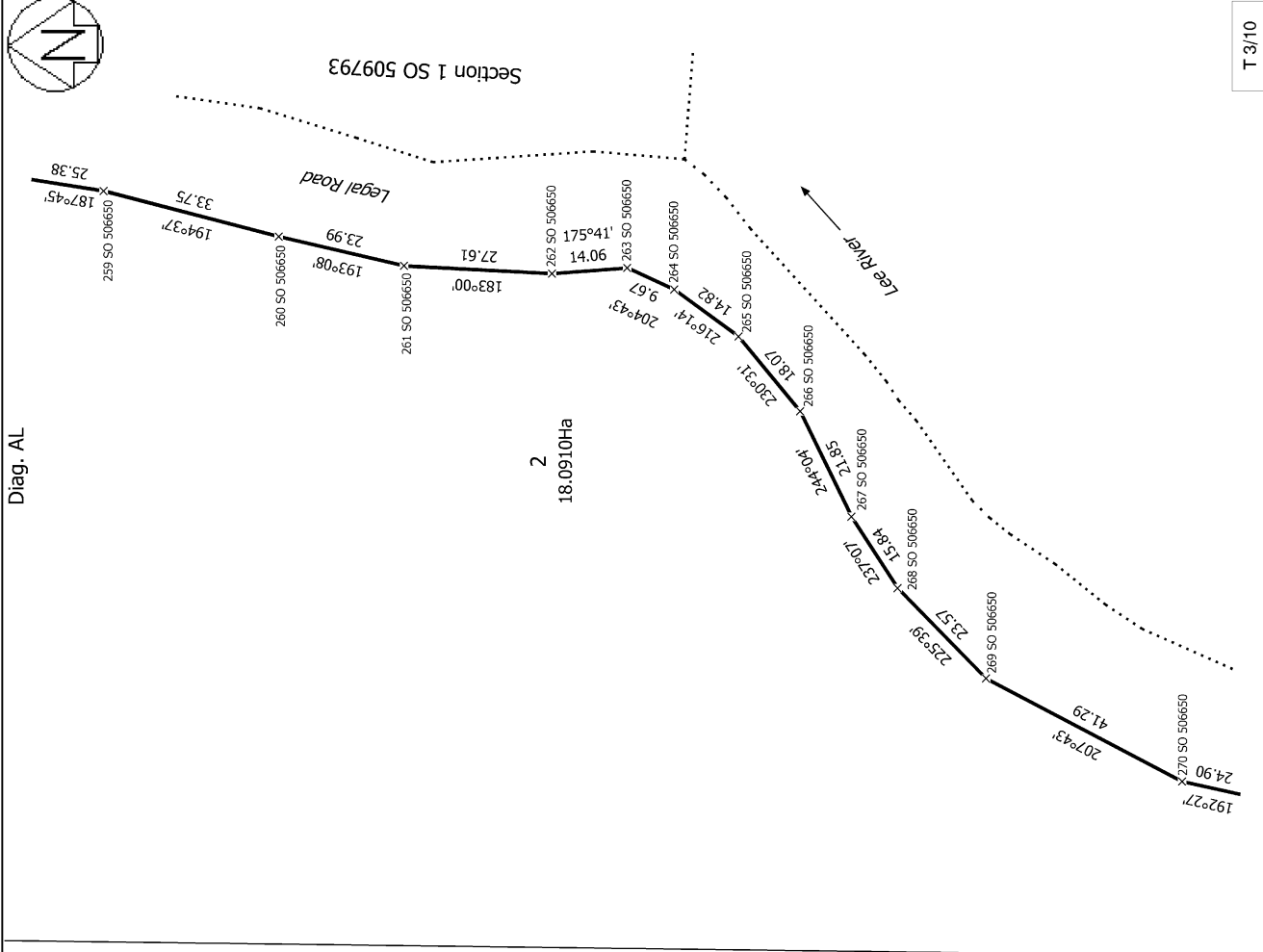
Lots 1-4 being a Subdivision of Sections 2, 3 & 8 SO 506650 and Easement
over Section 7 SO 506650

Surveyor: Ephraim Daniel Jacobsen
Firm: Staig and Smith Limited
Date of Survey: 2/06/2020

Record of Survey
LT 550103
Approved on: 8/11/2023



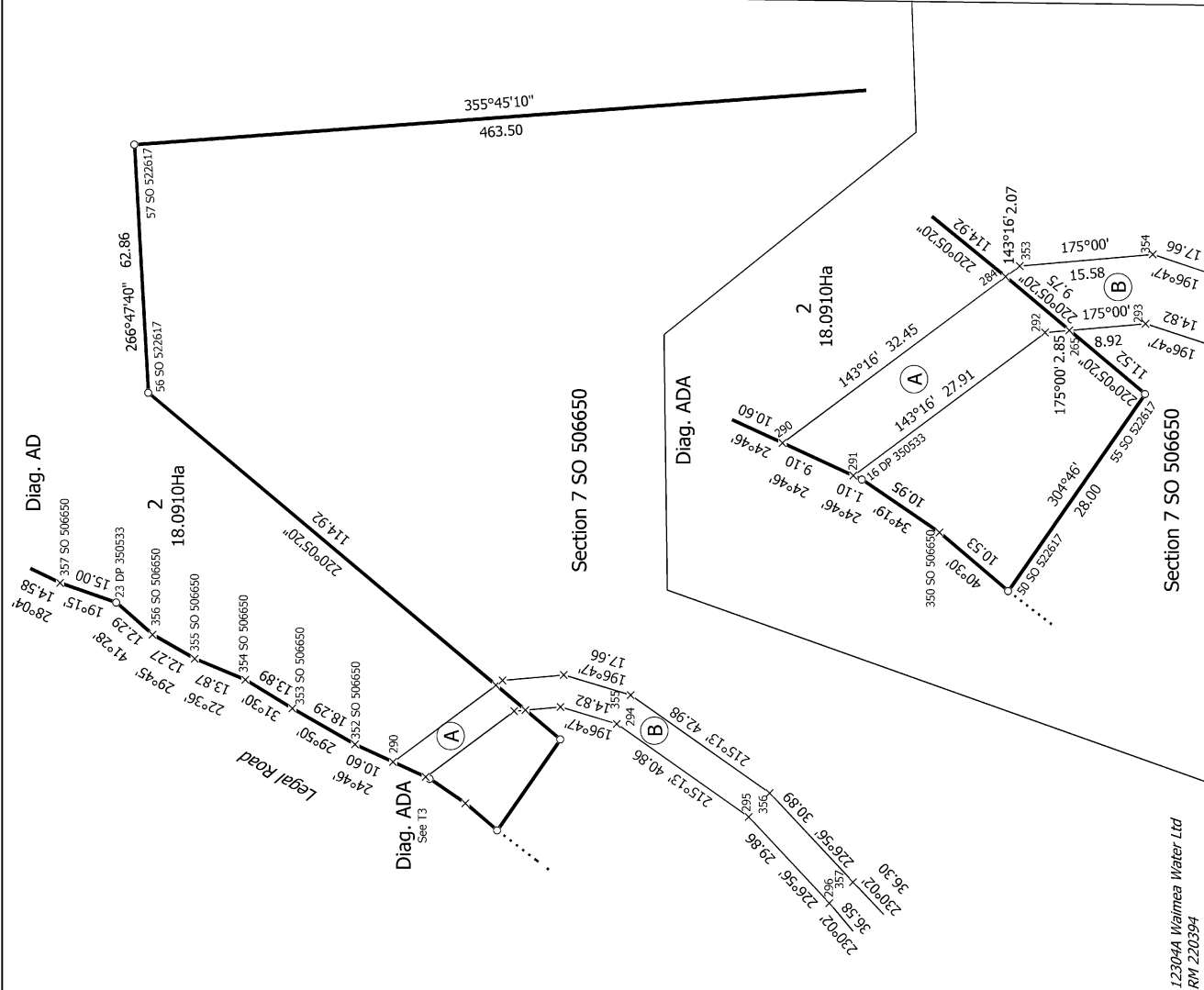
<p>123044 Waimea Water Ltd RM 220394</p>	<p>Land District: Nelson</p>	<p>Record of Survey LT 550103 Approved on: 8/11/2023</p>
<p>Lots 1-4 being a Subdivision of Sections 2, 3 & 8 SO 506650 and Easement over Section 7 SO 506650</p>		
<p>T 2/10</p>	<p>Surveyor: Ephraim Daniel Jacobsen Firm: Staig and Smith Limited Date of Survey: 2/06/2020</p>	<p>Digitally Generated Plan Generated on: 08/11/2023 06:23:36; Page 28 of 36</p>



T 3/10

Record of Survey
LT 550103
Approved on: 8/11/2023

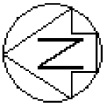
Surveyor: Ephraim Daniel Jacobsen
Firm: Staig and Smith Limited
Date of Survey: 2/06/2020



Lots 1-4 being a Subdivision of Sections 2,3 & 8 SO 506650 and Easement over Section 7 SO 506650

Land District: Nelson
12304A Waimea Water Ltd
RM 220394

Digitally Generated Plan
Generated on: 08/11/2023 06:23:36 Page 29 of 36

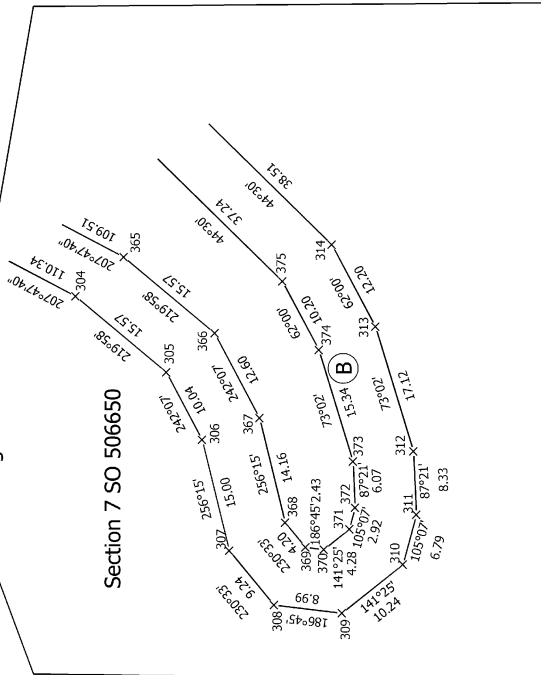


Diag. AC



Section 7 SO 506650

Diag. ACA



Section 7 SO 506650

423044 Waimea Water Ltd
RM 220394

Land District: Nelson

Digitally Generated Plan

Generated on: 08/11/2023 06:23:06 Page 30 of 36

Lots 1-4 being a Subdivision of Sections 2,3 & 8 SO 506650 and Easement
over Section 7 SO 506650

Surveyor: Ephraim Daniel Jacobsen
Firm: Staig and Smith Limited
Date of Survey: 2/06/2020

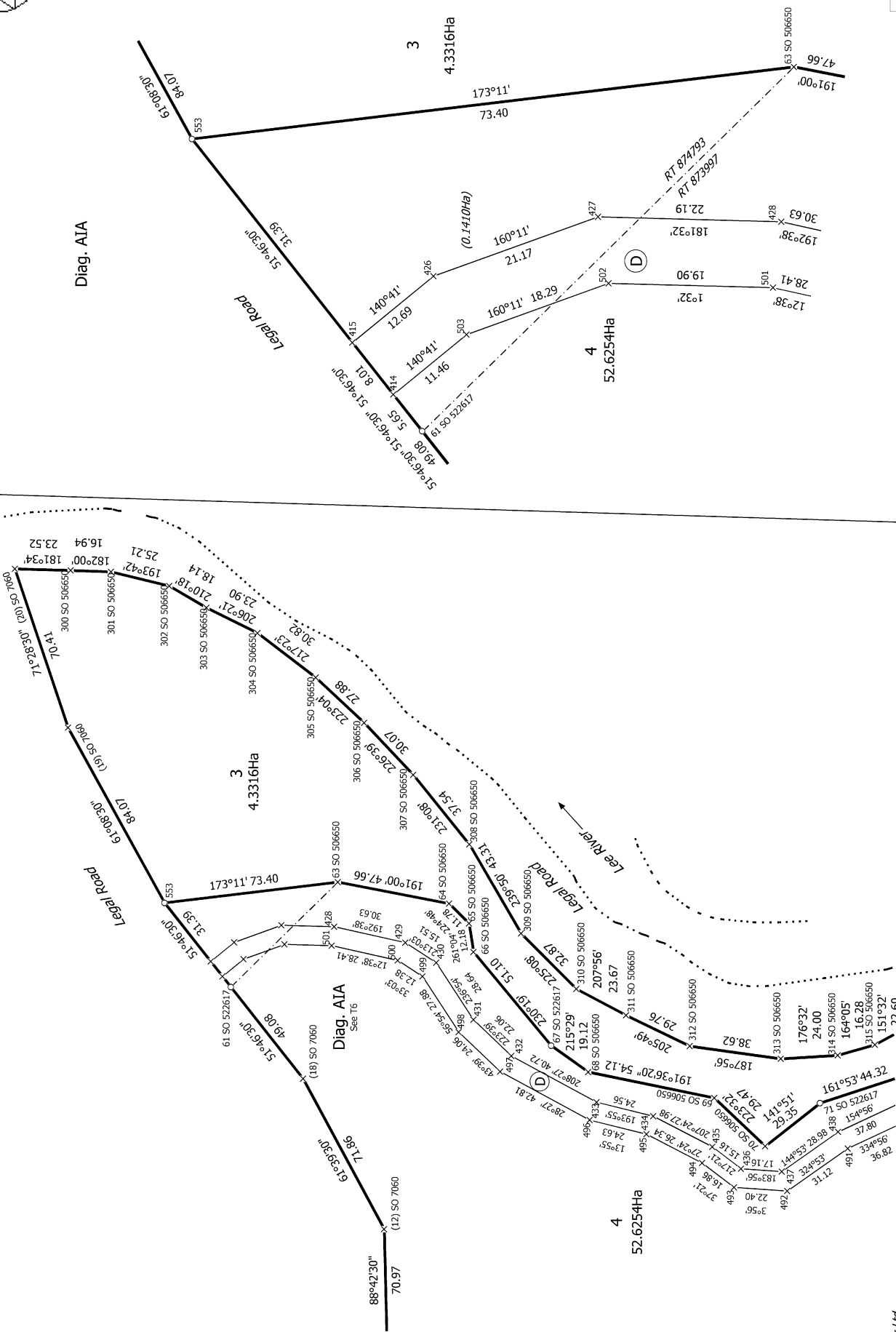
Record of Survey
LT 550103
Approved on: 8/11/2023

T 4/10



Diag. AI

Diag. AIA



T 6/10

Record of Survey
 LT 550103
 Approved on: 8/11/2023

Surveyor: Ephraim Daniel Jacobsen
 Firm: Steig and Smith Limited
 Date of Survey: 2/06/2020

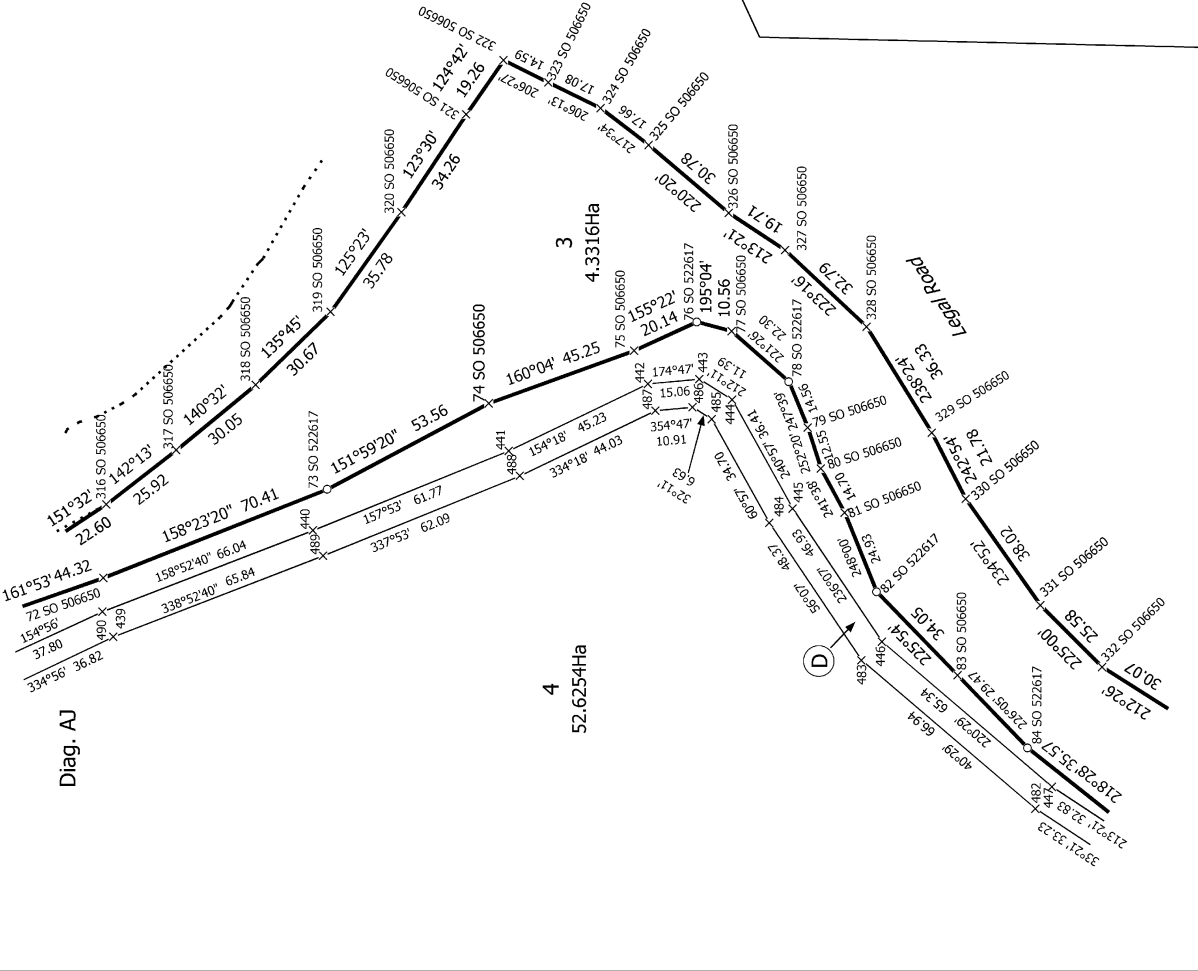
Lots 1-4 being a Subdivision of Sections 2, 3 & 8 SO 506650 and Easement
 over Section 7 SO 506650

123044 Waimea Water Ltd
 RM 220394

Land District: Nelson

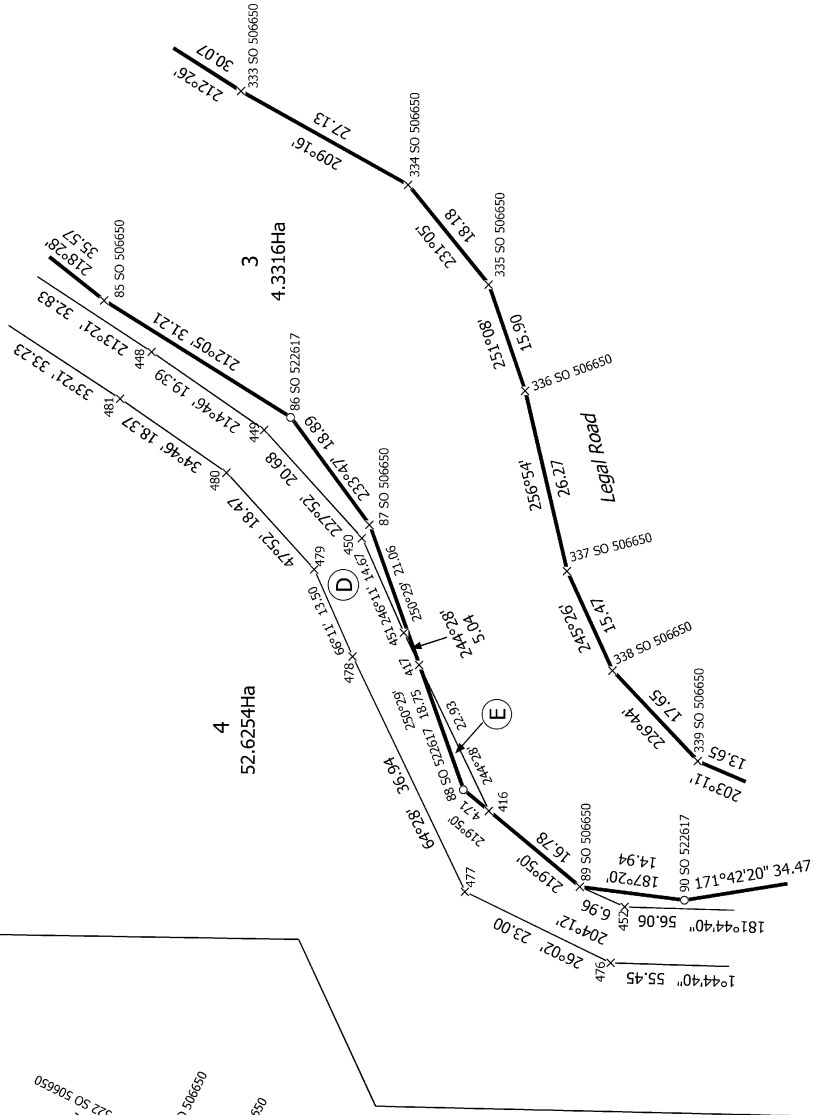
Digitally Generated Plan

Generated on: 08/11/2023 06:23:00 Page 32 of 36



Diag. AJ

Diag. AH



123044 Waimea Water Ltd
RW 220394

T 7/10

Land District: Nelson

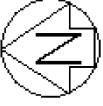
**Lots 1-4 being a Subdivision of Sections 2, 3 & 8 SO 506650 and Easement
over Section 7 SO 506650**

Surveyor: Ephraim Daniel Jacobsen
Firm: Staig and Smith Limited
Date of Survey: 2/06/2020

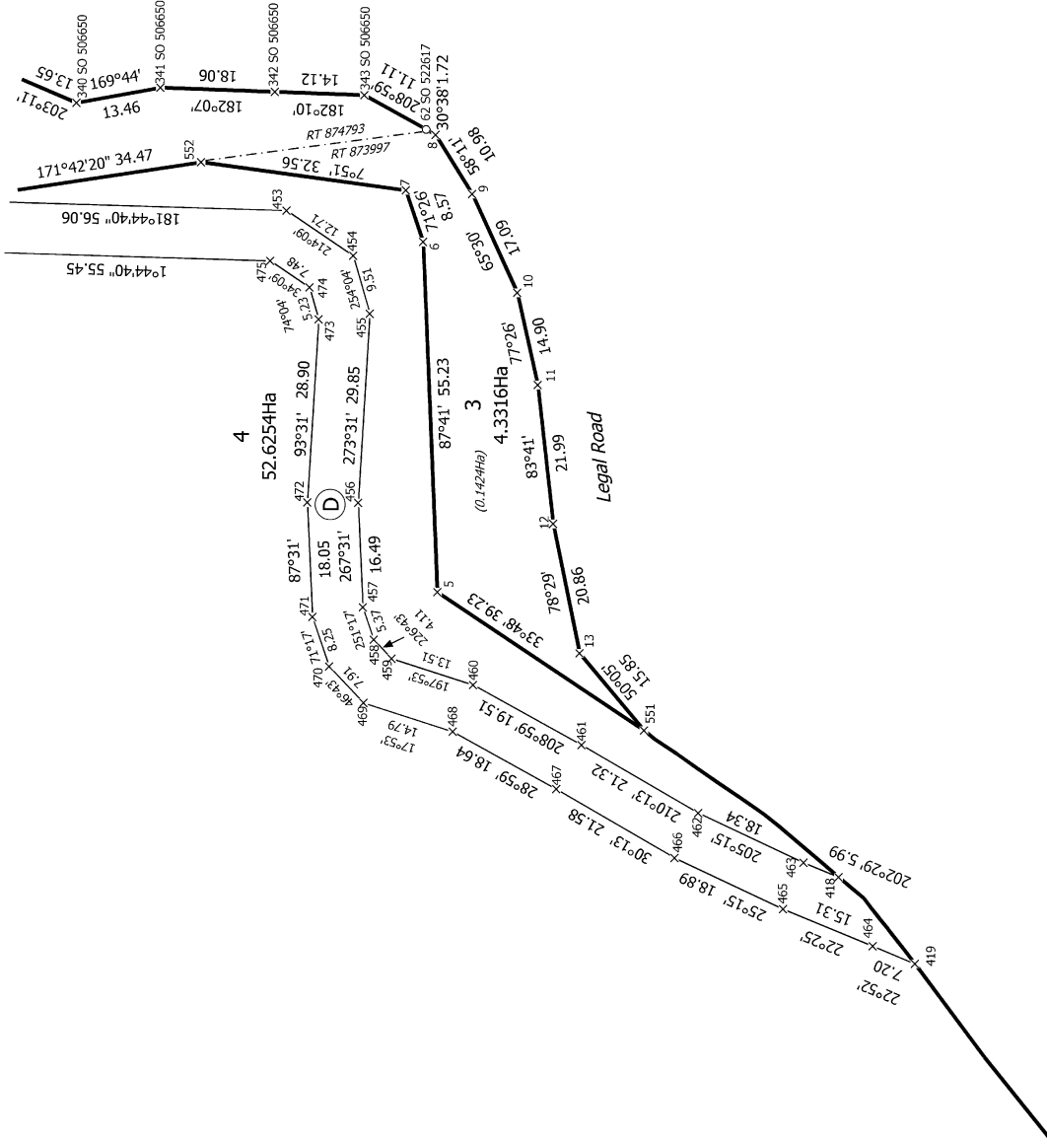
Record of Survey
LT 550103
Approved on: 8/11/2023

Digitally Generated Plan

Generated on: 08/11/2023 06:23:36 Page 33 of 36



Diag. AF



12304A Waimea Water Ltd
RM 220394

T 8/10

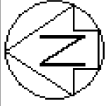
Land District: Nelson

Lots 1-4 being a Subdivision of Sections 2,3 & 8 SO 506650 and Easement over Section 7 SO 506650

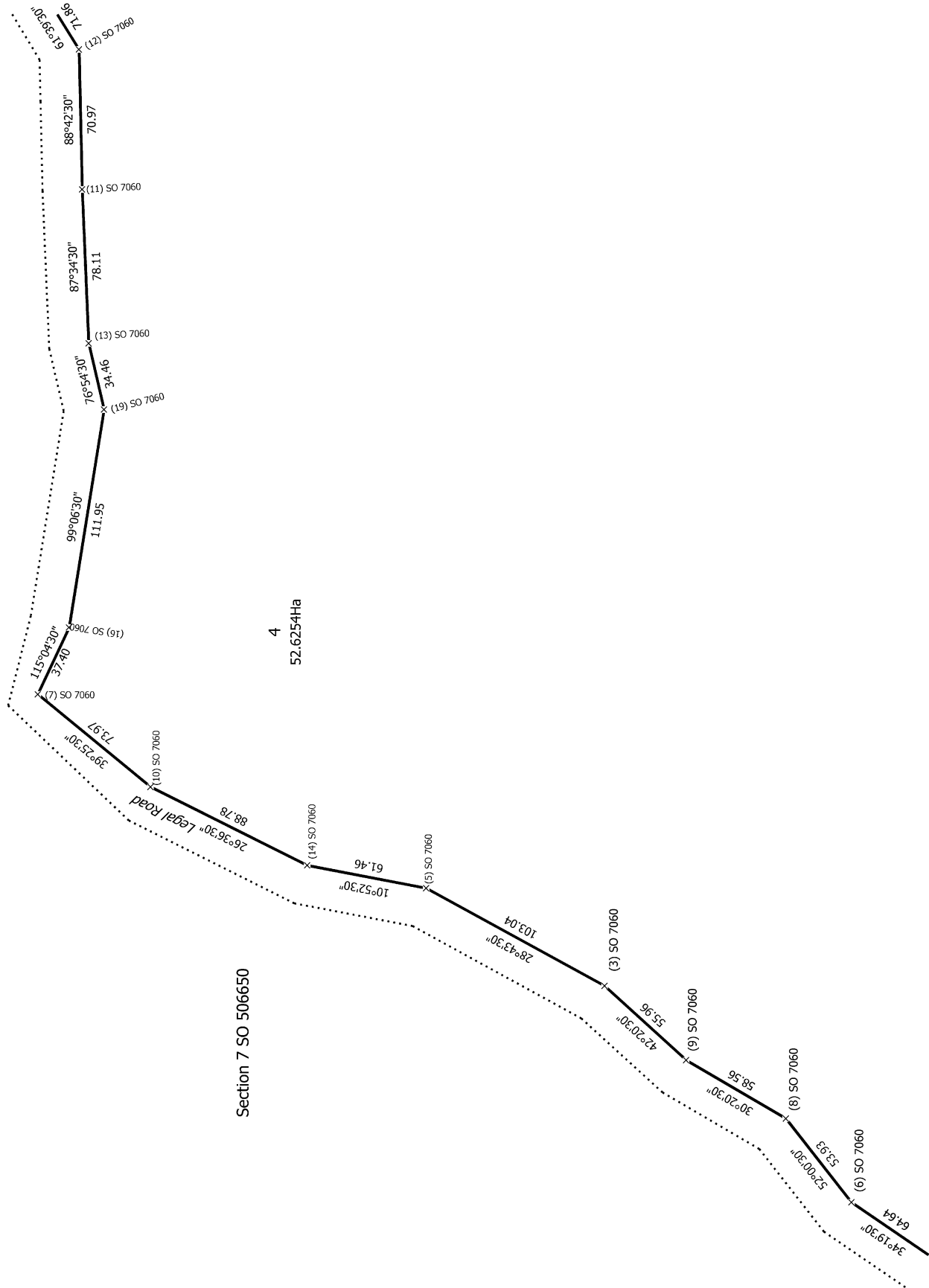
Surveyor: Ephraim Daniel Jacobsen
Firm: Steig and Smith Limited
Date of Survey: 2/06/2020

Record of Survey
LT 550103
Approved on: 8/11/2023

Digitally Generated Plan
Generated on: 08/11/2023 06:23:00 Page 34 of 36



Diag. AB



Section 7 SO 506650

12304A Waimea Water Ltd
RM 220394

T 9/10

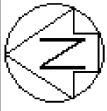
Land District: Nelson

Digitally Generated Plan
Generated on: 08/11/2023 06:23:00 Page 35 of 36

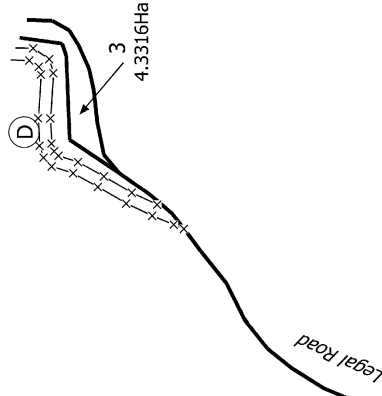
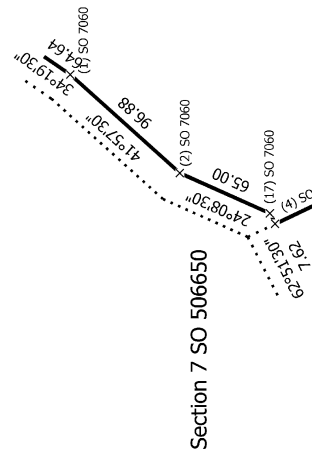
**Lots 1-4 being a Subdivision of Sections 2,3 & 8 SO 506650 and Easement
over Section 7 SO 506650**

Surveyor: Ephraim Daniel Jacobsen
Firm: Staig and Smith Limited
Date of Survey: 2/06/2020

Record of Survey
LT 550103
Approved on: 8/11/2023



Diag. AA



4
52.6254Ha

Part Crown Land (under action)

334°27'30"
696.04

94 SO 506650X

(20) SO 7060

12304A Waimea Water Ltd
RM 220394

T 10/10

Land District: Nelson

Digitally Generated Plan

Generated on: 08/11/2023 06:23:00 Page 36 of 36

Lots 1-4 being a Subdivision of Sections 2, 3 & 8 SO 506650 and Easement over Section 7 SO 506650

Surveyor: Ephraim Daniel Jacobsen
Firm: Staig and Smith Limited
Date of Survey: 2/06/2020

Record of Survey
LT 550103
Approved on: 8/11/2023