



# Record of Survey - LT 549488

---

**Survey Number** LT 549488  
**Surveyor Reference** Pahau Dairy 278391/03  
**Surveyor** Andrew Scott Rabbidge  
**Survey Firm** Milward Finlay Lobb Ltd  
**Surveyor Declaration** I Andrew Scott Rabbidge, being a licensed cadastral surveyor, certify that--  
(a) this dataset provided by me and its related survey are accurate, correct and in accordance with the Cadastral Survey Act 2002 and Cadastral Survey Rules 2021; and  
(b) the survey was undertaken by me or under my personal direction.  
Declared on 18 Sep 2023 05:39 PM

---

## Survey Details

**Dataset Description** Lots 1 & 2 being Definition of Lot 2 DP 341812 & Lot 2 DP 342890.  
**Purpose** Application  
**Status** Approved as to Survey  
**Land District** Canterbury  
**Meridional Circuit** Amuri 2000

<b>Type</b>	Survey
<b>Survey Class</b>	Class B
<b>Vertical Datum</b>	None

---

## Survey Dates

<b>Surveyed Date</b>	05/07/2017	<b>Certified Date</b>	18/09/2023
<b>Submitted Date</b>	18/09/2023 17:39:13	<b>Survey Approval Date</b>	22/09/2023
<b>Deposit Date</b>			

---

## Referenced Surveys

Survey Number	Land District	Bearing Correction
DP 9258	Canterbury	
DP 9259	Canterbury	
LT 513601	Canterbury	0°00'00"
DP 9242	Canterbury	-0°00'40"
DP 21660	Canterbury	-0°00'40"
DP 342890	Canterbury	-0°00'40"
SO 612	Canterbury	
SO 7758	Canterbury	-0°00'40"
DP 525368	Canterbury	
DP 540685	Canterbury	

---

## Territorial Authorities

Hurunui District

---

## Comprised In

RT 176035  
RT 172032

---

## Created Parcels

Parcels	Parcel Intent	Area	RT Reference
	Erosion		

---

# Record of Survey - LT 549488

---

## Created Parcels

Parcels	Parcel Intent	Area	RT Reference
	Erosion		
	Erosion		
Lot 1 Deposited Plan 549488	Fee Simple Title	254.8400 Ha	944870
Lot 2 Deposited Plan 549488	Fee Simple Title	76.8000 Ha	944871
Area A Deposited Plan 549488	Easement		
Area B Deposited Plan 549488	Easement		
Area C Deposited Plan 549488	Easement		
Area D Deposited Plan 549488	Easement		
Area E Deposited Plan 549488	Easement		
Area F Deposited Plan 549488	Easement		
Area G Deposited Plan 549488	Easement		
Area H Deposited Plan 549488	Easement		
Area J Deposited Plan 549488	Easement		
Area K Deposited Plan 549488	Easement		
Area L Deposited Plan 549488	Easement		
Area M Deposited Plan 549488	Easement		
Esplanade Strip R Deposited Plan 549488	Esplanade Strip		
Esplanade Strip S Deposited Plan 549488	Esplanade Strip		
	Hydro		
	Hydro		
<b>Total Area</b>		<u>331.6400 Ha</u>	

# Mark and Vector

Survey Number DP 549488

Meridional Circuit Amuri 2000

From	To	Code	Bearing	Adpt Surv	Bearing Correction	Distance	Adpt Surv	Class
POST 101 DP 513601	PEG DP 9242	ob0	105°12'40"	A DP 9242	-0°00'40"	313.52 A	DP 9242	Class B
PEG DP 9242	PEG DP 9242	ob3	119°46'00"	A DP 9242	-0°00'40"	878.68 A	DP 9242	Class B
PEG DP 9242	PEG XXXVIII SO 612	ob4	55°57'00"	A DP 9242	-0°00'40"	1,630.04 A	DP 9242	Class B
PEG XXXVIII SO 612	PEG DP 9242	ob5	77°49'20"	A DP 9242	-0°00'40"	220.06 A	DP 9242	Class B
PEG DP 9242	PEG DP 9242	ob8	77°49'20"	A DP 9242	-0°00'40"	223.24 A	DP 9242	Class B
PEG SO 7758	PEG DP 9242	ob9	57°22'50"	A SO 7758	-0°00'40"	780.69 A	SO 7758	Class B
PEG 1/R/2a DP 342890	PEG SO 7758	ob11	308°12'40"	A DP 342890	-0°00'40"	143.90 A	DP 342890	Class B
PEG 1/R/2a DP 342890	PEG 1/2c DP 342890	ob12	66°59'20"	A DP 342890	-0°00'40"	50.30 A	DP 342890	Class B
PEG 1/2c DP 342890	PEG 1/2b DP 342890	ob13	131°27'20"	A DP 342890	-0°00'40"	20.18 A	DP 342890	Class B
PEG 1/2b DP 342890	UNMK DP 342890	ob14	136°17'20"	A DP 342890	-0°00'40"	44.76 A	DP 342890	Class B
UNMK DP 342890	PEG 1/2a DP 342890	ob16	136°17'20"	A DP 342890	-0°00'40"	14.22 A	DP 342890	Class B
PEG DP 9242	PEG DP 9242	ob10	49°59'20"	A DP 9242	-0°00'40"	193.46 A	DP 9242	Class B
UNMK an DP 549488	UNMK 100 DP 549488	ob106	39°09'20"	C		20.00 C		Class BD
PEG 1/2a DP 342890	UNMK DP 342890	ob15	232°41'20"	A DP 342890	-0°00'40"	25.61 A	DP 342890	Class B
UNMK DP 342890	UNMK DP 342890	ob17	232°41'20"	A DP 342890	-0°00'40"	2.01 A	DP 342890	Class B
UNMK DP 342890	UNMK DP 342890	ob19	232°41'20"	A DP 342890	-0°00'40"	6.58 A	DP 342890	Class B
UNMK DP 342890	UNMK DP 342890	ob21	232°41'20"	A DP 342890	-0°00'40"	2.00 A	DP 342890	Class B
UNMK DP 342890	PEG 1/R/2b DP 342890	ob23	232°41'20"	A DP 342890	-0°00'40"	14.02 A	DP 342890	Class B
UNMK DP 342890	PEG 1/R/2b DP 342890	ob25	320°51'20"	A DP 342890	-0°00'40"	42.00 A	DP 342890	Class B
UNMK DP 342890	UNMK DP 342890	ob26	320°51'20"	A DP 342890	-0°00'40"	2.15 A	DP 342890	Class B
UNMK DP 342890	UNMK DP 342890	ob27	320°51'20"	A DP 342890	-0°00'40"	3.08 A	DP 342890	Class B
PEG SO 7758	UNMK DP 342890	ob28	320°51'20"	A DP 342890	-0°00'40"	15.46 A	DP 342890	Class B
PEG SO 7758	PEG X DP 21660	ob29	146°52'10"	A DP 21660	-0°00'40"	318.77 A	DP 21660	Class B
PEG X DP 21660	PEG XI DP 21660	ob30	56°06'10"	A DP 21660	-0°00'40"	1,159.25 A	DP 21660	Class B
UNMK DP 342890	UNMK DP 342890	ob33	209°04'20"	A DP 342890	-0°00'40"	1.41 A	DP 342890	Class B
UNMK DP 342890	UNMK DP 342890	ob36	209°04'20"	A DP 342890	-0°00'40"	3.35 A	DP 342890	Class B

# Mark and Vector

Survey Number DP 549488

Meridional Circuit Amuri 2000

From	To	Code	Bearing	Adpt Surv	Bearing Correction	Distance	Adpt Surv	Class
UNMK DP 342890	UNMK DP 342890	ob39	209°04'20"	A DP 342890	-0°00'40"	15.15 A	DP 342890	Class B
UNMK DP 342890	UNMK DP 342890	ob41	209°04'20"	A DP 342890	-0°00'40"	15.15 A	DP 342890	Class B
UNMK DP 342890	UNMK DP 342890	ob37	209°04'20"	A DP 342890	-0°00'40"	2.15 A	DP 342890	Class B
UNMK DP 342890	UNMK DP 342890	ob34	209°04'20"	A DP 342890	-0°00'40"	2.15 A	DP 342890	Class B
UNMK DP 342890	UNMK DP 342890	ob20	149°29'20"	A DP 342890	-0°00'40"	34.73 A	DP 342890	Class B
UNMK DP 342890	UNMK DP 342890	ob18	149°29'20"	A DP 342890	-0°00'40"	36.11 A	DP 342890	Class B
UNMK DP 342890	UNMK DP 342890	ob24	140°46'20"	A DP 342890	-0°00'40"	35.93 A	DP 342890	Class B
UNMK DP 342890	UNMK DP 342890	ob40	140°46'20"	A DP 342890	-0°00'40"	2.15 A	DP 342890	Class B
UNMK DP 342890	UNMK DP 342890	ob42	140°46'20"	A DP 342890	-0°00'40"	13.67 A	DP 342890	Class B
UNMK DP 342890	UNMK DP 342890	ob43	140°46'20"	A DP 342890	-0°00'40"	1.47 A	DP 342890	Class B
UNMK DP 342890	UNMK DP 342890	ob44	81°43'40"	A DP 342890	-0°00'40"	41.74 A	DP 342890	Class B
UNMK DP 342890	UNMK DP 342890	ob45	179°54'20"	A DP 342890	-0°00'40"	20.859 A	DP 342890	Class B
UNMK DP 342890	UNMK DP 342890	ob46	104°09'20"	A DP 342890	-0°00'40"	1.95 A	DP 342890	Class B
UNMK DP 342890	UNMK DP 342890	ob47	194°09'20"	A DP 342890	-0°00'40"	6.52 A	DP 342890	Class B
UNMK DP 342890	UNMK DP 342890	ob48	284°09'20"	A DP 342890	-0°00'40"	6.52 A	DP 342890	Class B
UNMK DP 342890	UNMK DP 342890	ob49	194°09'20"	A DP 342890	-0°00'40"	6.52 A	DP 342890	Class B
UNMK DP 342890	UNMK DP 342890	ob50	104°09'20"	A DP 342890	-0°00'40"	2.51 A	DP 342890	Class B
UNMK DP 342890	UNMK DP 342890	ob51	179°54'20"	A DP 342890	-0°00'40"	23.71 A	DP 342890	Class B
UNMK DP 342890	UNMK DP 342890	ob52	81°43'40"	A DP 342890	-0°00'40"	42.92 A	DP 342890	Class B
UNMK DP 342890	UNMK DP 342890	ob38	140°46'20"	A DP 342890	-0°00'40"	14.80 A	DP 342890	Class B
UNMK DP 342890	UNMK DP 342890	ob35	140°46'20"	A DP 342890	-0°00'40"	2.15 A	DP 342890	Class B
UNMK DP 342890	UNMK DP 342890	ob22	140°46'20"	A DP 342890	-0°00'40"	35.07 A	DP 342890	Class B
UNMK DP 342890	UNMK DP 342890	ob53	165°09'00"	A DP 342890	-0°00'40"	40.00 A	DP 342890	Class B
UNMK c DP 513601	POST 101 DP 513601	ob54	195°12'50"	A LT 513601	0°00'00"	150.55 A	LT 513601	Class B



# Mark and Vector

Survey Number DP 549488

Meridional Circuit Amuri 2000

From	To	Code	Bearing	Adpt Surv	Bearing Correction	Distance	Adpt Surv	Class
UNMK d DP 513601	UNMK c DP 513601	ob56	195°12'50"	A LT 513601	0°00'00"	10.60 A	LT 513601	Class B
UNMK 5 DP 525368	UNMK d DP 513601	ob58	195°12'50"	A LT 513601	0°00'00"	604.06 A	LT 513601	Class B
POST 170 DP 513601	UNMK 5 DP 525368	ob1	195°12'50"	A LT 513601	0°00'00"	12.39 A	LT 513601	Class B
POST 170 DP 513601	UNMK DP 9242	ob2	15°12'50"	A LT 513601	0°00'00"	6.04 A	LT 513601	Class BD
UNMK DP 9242	PEG 102 DP 513601	ob59	15°12'50"	A LT 513601	0°00'00"	117.01 A	LT 513601	Class BD
UNMK DP 21660	POST 169 DP 513601	ob32	56°06'10"	A DP 21660	-0°00'40"	19.85 A	LT 513601	Class BD
PEG DP 9242	PEG 154 DP 513601	ob7	39°09'20"	A DP 9242	-0°00'40"	142.44 A	LT 513601	Class B
PEG XI DP 21660	UNMK DP 21660	ob31	56°06'10"	A DP 21660	-0°00'40"	79.46 C		Class BD
UNMK 169 DP 549488	UNMK 170 DP 549488	ob108	56°06'10"	C		20.00 C		Class BD
UNMK 154 DP 549488	UNMK 101 DP 549488	ob107	39°09'20"	A DP 9242	-0°00'40"	20.00 C		Class BD
PEG DP 9242	PEG 153 DP 513601	ob6	39°09'20"	A DP 9242	-0°00'40"	133.59 A	LT 513601	Class B
UNMK q DP 513601	UNMK r DP 513601	ob68	13°35'00"	A LT 513601	0°00'00"	377.60 A	LT 513601	Class B
UNMK e DP 513601	UNMK f DP 513601	ob70	13°35'00"	A LT 513601	0°00'00"	378.56 A	LT 513601	Class B
UNMK d DP 513601	UNMK e DP 513601	ob57	43°20'00"	A LT 513601	0°00'00"	55.20 A	LT 513601	Class B
UNMK c DP 513601	UNMK q DP 513601	ob55	43°20'00"	A LT 513601	0°00'00"	65.87 A	LT 513601	Class B
UNMK x DP 513601	UNMK y DP 513601	ob72	91°12'00"	A LT 513601	0°00'00"	222.77 A	LT 513601	Class B
UNMK w DP 513601	UNMK x DP 513601	ob74	64°24'00"	A LT 513601	0°00'00"	97.95 A	LT 513601	Class B
UNMK v DP 513601	UNMK w DP 513601	ob75	84°46'00"	A LT 513601	0°00'00"	246.80 A	LT 513601	Class B
UNMK u DP 513601	UNMK v DP 513601	ob76	61°28'00"	A LT 513601	0°00'00"	159.50 A	LT 513601	Class B
UNMK t DP 513601	UNMK u DP 513601	ob77	80°00'00"	A LT 513601	0°00'00"	135.87 A	LT 513601	Class B
UNMK s DP 513601	UNMK t DP 513601	ob78	70°33'00"	A LT 513601	0°00'00"	197.90 A	LT 513601	Class B
UNMK r DP 513601	UNMK s DP 513601	ob69	62°46'00"	A LT 513601	0°00'00"	184.09 A	LT 513601	Class B
UNMK m DP 513601	UNMK n DP 513601	ob79	91°12'00"	A LT 513601	0°00'00"	223.60 A	LT 513601	Class B
UNMK l DP 513601	UNMK m DP 513601	ob81	64°24'00"	A LT 513601	0°00'00"	98.25 A	LT 513601	Class B

# Mark and Vector

Survey Number DP 549488

Meridional Circuit Amuri 2000

From	To	Code	Bearing	Adpt Surv	Bearing Correction	Distance	Adpt Surv	Class
UNMK k DP 513601	UNMK l DP 513601	ob82	84°46'00"	A LT 513601	0°00'00"	246.94 A	LT 513601	Class B
UNMK j DP 513601	UNMK k DP 513601	ob83	61°28'00"	A LT 513601	0°00'00"	159.72 A	LT 513601	Class B
UNMK h DP 513601	UNMK j DP 513601	ob84	80°00'00"	A LT 513601	0°00'00"	135.47 A	LT 513601	Class B
UNMK g DP 513601	UNMK h DP 513601	ob85	70°33'00"	A LT 513601	0°00'00"	198.65 A	LT 513601	Class B
UNMK f DP 513601	UNMK g DP 513601	ob71	62°46'00"	A LT 513601	0°00'00"	186.72 A	LT 513601	Class B
POST 129 DP 513601	UNMK a DP 513601	ob135	104°51'00"	A LT 513601	0°00'00"	42.22 A	LT 513601	Class B
UNMK z DP 513601	UNMK b DP 513601	ob86	60°26'00"	A LT 513601	0°00'00"	77.10 A	LT 513601	Class B
UNMK y DP 513601	UNMK z DP 513601	ob73	82°54'00"	A LT 513601	0°00'00"	162.75 A	LT 513601	Class B
UNMK p DP 513601	UNMK a DP 513601	ob88	60°26'00"	A LT 513601	0°00'00"	71.00 A	LT 513601	Class B
UNMK n DP 513601	UNMK p DP 513601	ob80	82°54'00"	A LT 513601	0°00'00"	161.40 A	LT 513601	Class B
POST 130 DP 513601	POST 131 DP 513601	ob89	102°05'00"	A LT 513601	0°00'00"	47.36 A	LT 513601	Class B
UNMK ak DP 513601	UNMK al DP 513601	ob91	69°09'00"	A LT 513601	0°00'00"	96.02 A	LT 513601	Class B
UNMK aj DP 513601	UNMK ak DP 513601	ob93	81°09'00"	A LT 513601	0°00'00"	68.02 A	LT 513601	Class B
UNMK ai DP 513601	UNMK aj DP 513601	ob94	98°51'00"	A LT 513601	0°00'00"	73.97 A	LT 513601	Class B
UNMK ah DP 513601	UNMK ai DP 513601	ob95	87°44'00"	A LT 513601	0°00'00"	102.85 A	LT 513601	Class B
UNMK ag DP 513601	UNMK ah DP 513601	ob96	177°44'00"	A LT 513601	0°00'00"	5.00 A	LT 513601	Class B
UNMK ag DP 513601	UNMK af DP 513601	ob97	87°44'00"	A LT 513601	0°00'00"	103.34 A	LT 513601	Class B
UNMK af DP 513601	UNMK ae DP 513601	ob98	98°51'00"	A LT 513601	0°00'00"	73.68 A	LT 513601	Class B
UNMK ae DP 513601	UNMK ad DP 513601	ob99	81°09'00"	A LT 513601	0°00'00"	66.71 A	LT 513601	Class B
UNMK ad DP 513601	UNMK ac DP 513601	ob100	69°09'00"	A LT 513601	0°00'00"	95.98 A	LT 513601	Class B
UNMK al DP 513601	UNMK ab DP 513601	ob92	80°25'00"	A LT 513601	0°00'00"	72.24 A	LT 513601	Class B
UNMK ab DP 513601	POST 146 DP 513601	ob102	151°21'00"	A LT 513601	0°00'00"	16.12 A	LT 513601	Class B
UNMK ac DP 513601	UNMK aa DP 513601	ob101	80°25'00"	A LT 513601	0°00'00"	71.00 A	LT 513601	Class B
POST 145 DP 513601	UNMK aa DP 513601	ob104	151°21'00"	A LT 513601	0°00'00"	10.16 A	LT 513601	Class B

# Mark and Vector

Survey Number DP 549488

Meridional Circuit Amuri 2000

From	To	Code	Bearing	Adpt Surv	Bearing Correction	Distance	Adpt Surv	Class
PEG 154 DP 513601	UNMK 154 DP 549488	ob64	39°09'20"	A DP 9242	-0°00'40"	30.00 C		Class BD
POST 169 DP 513601	UNMK 169 DP 549488	ob65	56°06'10"	C		40.00 C		Class BD
POST 117 DP 513601	POST 118 DP 513601	ob109	71°53'00"	A LT 513601	0°00'00"	65.65 A	LT 513601	Class B
POST 116 DP 513601	POST 117 DP 513601	ob111	65°23'00"	A LT 513601	0°00'00"	104.95 A	LT 513601	Class B
POST 115 DP 513601	POST 116 DP 513601	ob112	101°42'00"	A LT 513601	0°00'00"	15.48 A	LT 513601	Class B
POST 114 DP 513601	POST 115 DP 513601	ob113	85°10'00"	A LT 513601	0°00'00"	89.50 A	LT 513601	Class B
POST 113 DP 513601	POST 114 DP 513601	ob114	81°48'00"	A LT 513601	0°00'00"	39.03 A	LT 513601	Class B
POST 112 DP 513601	POST 113 DP 513601	ob115	99°17'00"	A LT 513601	0°00'00"	66.22 A	LT 513601	Class B
POST 111 DP 513601	POST 112 DP 513601	ob116	96°09'00"	A LT 513601	0°00'00"	33.26 A	LT 513601	Class B
POST 110 DP 513601	POST 111 DP 513601	ob117	83°40'00"	A LT 513601	0°00'00"	49.80 A	LT 513601	Class B
POST 109 DP 513601	POST 110 DP 513601	ob118	64°17'00"	A LT 513601	0°00'00"	57.55 A	LT 513601	Class B
POST 108 DP 513601	POST 109 DP 513601	ob119	81°05'00"	A LT 513601	0°00'00"	66.06 A	LT 513601	Class B
POST 107 DP 513601	POST 108 DP 513601	ob120	96°04'00"	A LT 513601	0°00'00"	32.53 A	LT 513601	Class B
POST 105 DP 513601	POST 106 DP 513601	ob122	89°57'00"	A LT 513601	0°00'00"	53.70 A	LT 513601	Class B
POST 104 DP 513601	POST 105 DP 513601	ob123	100°34'00"	A LT 513601	0°00'00"	53.29 A	LT 513601	Class B
POST 103 DP 513601	POST 104 DP 513601	ob124	109°23'00"	A LT 513601	0°00'00"	51.70 A	LT 513601	Class B
PEG 102 DP 513601	POST 103 DP 513601	ob60	90°55'00"	A LT 513601	0°00'00"	175.58 A	LT 513601	Class B
POST 128 DP 513601	POST 129 DP 513601	ob125	165°37'00"	A LT 513601	0°00'00"	38.01 A	LT 513601	Class B
POST 127 DP 513601	POST 128 DP 513601	ob126	132°26'00"	A LT 513601	0°00'00"	18.05 A	LT 513601	Class B
POST 126 DP 513601	POST 127 DP 513601	ob127	101°35'00"	A LT 513601	0°00'00"	40.45 A	LT 513601	Class B
POST 125 DP 513601	POST 126 DP 513601	ob128	86°38'00"	A LT 513601	0°00'00"	19.90 A	LT 513601	Class B
POST 124 DP 513601	POST 125 DP 513601	ob129	71°03'00"	A LT 513601	0°00'00"	19.80 A	LT 513601	Class B
POST 123 DP 513601	POST 124 DP 513601	ob130	89°21'00"	A LT 513601	0°00'00"	54.25 A	LT 513601	Class B
POST 122 DP 513601	POST 123 DP 513601	ob131	96°05'00"	A LT 513601	0°00'00"	35.92 A	LT 513601	Class B

# Mark and Vector

Survey Number DP 549488

Meridional Circuit Amuri 2000

From	To	Code	Bearing	Adpt Surv	Bearing Correction	Distance	Adpt Surv	Class
POST 121 DP 513601	POST 122 DP 513601	ob132	83°03'00"	A LT 513601	0°00'00"	50.82 A	LT 513601	Class B
POST 120 DP 513601	POST 121 DP 513601	ob133	100°27'00"	A LT 513601	0°00'00"	17.40 A	LT 513601	Class B
POST 119 DP 513601	POST 120 DP 513601	ob134	70°27'00"	A LT 513601	0°00'00"	102.68 A	LT 513601	Class B
POST 118 DP 513601	POST 119 DP 513601	ob110	48°16'00"	A LT 513601	0°00'00"	17.62 A	LT 513601	Class B
POST 131 DP 513601	POST 132 DP 513601	ob90	77°44'00"	A LT 513601	0°00'00"	71.55 A	LT 513601	Class B
POST 133 DP 513601	POST 134 DP 513601	ob137	112°13'00"	A LT 513601	0°00'00"	45.93 A	LT 513601	Class B
POST 132 DP 513601	POST 133 DP 513601	ob136	85°01'00"	A LT 513601	0°00'00"	81.15 A	LT 513601	Class B
POST 134 DP 513601	POST 135 DP 513601	ob138	94°30'00"	A LT 513601	0°00'00"	119.48 A	LT 513601	Class B
POST 135 DP 513601	POST 136 DP 513601	ob139	72°05'00"	A LT 513601	0°00'00"	37.81 A	LT 513601	Class B
POST 138 DP 513601	POST 139 DP 513601	ob141	128°15'00"	A LT 513601	0°00'00"	30.88 A	LT 513601	Class B
POST 137 DP 513601	POST 138 DP 513601	ob143	116°48'00"	A LT 513601	0°00'00"	34.84 A	LT 513601	Class B
POST 136 DP 513601	POST 137 DP 513601	ob140	86°57'00"	A LT 513601	0°00'00"	117.10 A	LT 513601	Class B
POST 144 DP 513601	POST 145 DP 513601	ob144	149°54'00"	A LT 513601	0°00'00"	109.62 A	LT 513601	Class B
POST 143 DP 513601	POST 144 DP 513601	ob145	120°43'00"	A LT 513601	0°00'00"	14.57 A	LT 513601	Class B
POST 142 DP 513601	POST 143 DP 513601	ob146	106°30'00"	A LT 513601	0°00'00"	84.54 A	LT 513601	Class B
POST 141 DP 513601	POST 142 DP 513601	ob147	69°09'00"	A LT 513601	0°00'00"	7.42 A	LT 513601	Class B
POST 140 DP 513601	POST 141 DP 513601	ob148	110°14'00"	A LT 513601	0°00'00"	34.84 A	LT 513601	Class B
POST 139 DP 513601	POST 140 DP 513601	ob142	121°51'00"	A LT 513601	0°00'00"	112.09 A	LT 513601	Class B
POST 151 DP 513601	POST 152 DP 513601	ob150	119°44'00"	A LT 513601	0°00'00"	80.51 A	LT 513601	Class B
POST 152 DP 513601	PEG 153 DP 513601	ob149	122°57'00"	A LT 513601	0°00'00"	19.98 A	LT 513601	Class B
POST 150 DP 513601	POST 151 DP 513601	ob151	102°45'00"	A LT 513601	0°00'00"	14.29 A	LT 513601	Class B
POST 149 DP 513601	POST 150 DP 513601	ob152	118°34'00"	A LT 513601	0°00'00"	88.17 A	LT 513601	Class B
POST 148 DP 513601	POST 149 DP 513601	ob153	99°30'00"	A LT 513601	0°00'00"	15.28 A	LT 513601	Class B
POST 147 DP 513601	POST 148 DP 513601	ob154	108°27'00"	A LT 513601	0°00'00"	30.85 A	LT 513601	Class B

# Mark and Vector

Survey Number DP 549488

Meridional Circuit Amuri 2000

From	To	Code	Bearing	Adpt Surv	Bearing Correction	Distance	Adpt Surv	Class
POST 146 DP 513601	POST 147 DP 513601	ob103	118°19'00"	A LT 513601	0°00'00"	42.92 A	LT 513601	Class B
POST 164 DP 513601	POST 165 DP 513601	ob159	117°40'00"	A LT 513601	0°00'00"	24.32 A	LT 513601	Class B
POST 168 DP 513601	POST 169 DP 513601	ob156	161°22'00"	A LT 513601	0°00'00"	66.66 A	LT 513601	Class B
POST 167 DP 513601	POST 168 DP 513601	ob157	127°32'00"	A LT 513601	0°00'00"	49.61 A	LT 513601	Class B
POST 166 DP 513601	POST 167 DP 513601	ob158	108°03'00"	A LT 513601	0°00'00"	42.97 A	LT 513601	Class B
POST 165 DP 513601	POST 166 DP 513601	ob155	127°01'00"	A LT 513601	0°00'00"	46.67 A	LT 513601	Class B
POST 163 DP 513601	POST 164 DP 513601	ob160	162°22'00"	A LT 513601	0°00'00"	61.22 A	LT 513601	Class B
POST 162 DP 513601	POST 163 DP 513601	ob161	149°51'00"	A LT 513601	0°00'00"	40.22 A	LT 513601	Class B
POST 161 DP 513601	POST 162 DP 513601	ob162	176°16'00"	A LT 513601	0°00'00"	15.29 A	LT 513601	Class B
POST 160 DP 513601	POST 161 DP 513601	ob163	203°18'00"	A LT 513601	0°00'00"	28.23 A	LT 513601	Class B
POST 159 DP 513601	POST 160 DP 513601	ob164	159°21'00"	A LT 513601	0°00'00"	15.25 A	LT 513601	Class B
POST 158 DP 513601	POST 159 DP 513601	ob165	131°54'00"	A LT 513601	0°00'00"	15.76 A	LT 513601	Class B
POST 158 DP 513601	POST 157 DP 513601	ob166	55°58'00"	A LT 513601	0°00'00"	42.20 A	LT 513601	Class B
POST 156 DP 513601	POST 157 DP 513601	ob167	139°31'00"	A LT 513601	0°00'00"	78.44 A	LT 513601	Class B
POST 156 DP 513601	POST 155 DP 513601	ob168	321°31'00"	A LT 513601	0°00'00"	45.96 A	LT 513601	Class B
PEG 154 DP 513601	POST 155 DP 513601	ob62	124°24'00"	A LT 513601	0°00'00"	84.06 A	LT 513601	Class B
POST 106 DP 513601	POST 107 DP 513601	ob121	14°17'00"	A LT 513601	0°00'00"	8.48 A	LT 513601	Class B
UNMK 100 DP 549488	UNMK DP 9258	ob183	39°09'20"	A DP 9242	-0°00'40"	178.16 C		Class BD
UNMK 101 DP 549488	UNMK DP 9259	ob184	39°09'20"	A DP 9242	-0°00'40"	182.81 C		Class BD
PEG 102 DP 513601	UNMK am DP 549488	ob61	15°12'50"	C		5.56 C		Class BD
UNMK am DP 549488	UNMK 2 DP 525368	ob105	15°12'50"	C		21.50 C		Class BD
PEG 153 DP 513601	UNMK an DP 549488	ob67	39°09'20"	C		32.00 C		Class BD
IT 2 DP 513601	PEG 102 DP 513601	ob171	310°32'00"	A LT 513601	0°00'00"	27.55 A	LT 513601	
IS 7 DP 513601	PEG 153 DP 513601	ob173	59°47'00"	A LT 513601	0°00'00"	29.47 A	LT 513601	

# Mark and Vector

Survey Number DP 549488

Meridional Circuit Amuri 2000

From	To	Code	Bearing	Adpt Surv	Bearing Correction	Distance	Adpt Surv	Class
IS 7 DP 513601	IT 8 DP 513601	ob174	151°30'50"	M		399.76 M		
IT 8 DP 513601	POST 169 DP 513601	ob177	124°19'00"	A	LT 513601	0°00'00"	207.59 A LT 513601	
UNMK DP 9258	UNMK DP 9259	ob169	116°00'00"	C		20.67 C		
IS 7 DP 513601	IS 6 DP 513601	ob175	300°52'20"	M		613.82 M		
IS 6 DP 513601	IS 5 DP 513601	ob178	274°17'30"	M		649.52 M		
IS 5 DP 513601	IS 4 DP 513601	ob180	262°55'30"	M		521.50 M		
IS 4 DP 513601	IS 3 DP 513601	ob181	269°45'30"	M		428.05 M		
IS 3 DP 513601	IT 2 DP 513601	ob182	274°27'20"	M		313.34 M		
PEG 153 DP 513601	UNMK 100 DP 549488	ob66	39°09'20"	C		52.00 C		
PEG 154 DP 513601	UNMK 101 DP 549488	ob63	39°09'20"	C		50.00 C		
IT 2 DP 513601	UNMK 2 DP 525368	ob172	342°33'30"	A	DP 525368	0°00'00"	46.14 A DP 525368	
IS 7 DP 513601	PEG 154 DP 513601	ob176	85°14'00"	A	LT 513601	0°00'00"	42.35 A LT 513601	
UNMK b DP 513601	POST 130 DP 513601	ob87	104°51'00"	A	LT 513601	0°00'00"	6.70 A LT 513601	Class B
UNMK 2 DP 525368	UNMK 200 DP 513601	ob186	86°57'00"	C		1,339.72 C		
UNMK 200 DP 513601	UNMK 201 DP 513601	ob187	93°00'00"	A	LT 513601	0°00'00"	96.63 A LT 513601	
UNMK 201 DP 513601	UNMK 202 DP 513601	ob188	96°00'00"	A	LT 513601	0°00'00"	130.00 A LT 513601	
UNMK 202 DP 513601	UNMK 203 DP 513601	ob189	96°00'00"	A	LT 513601	0°00'00"	87.87 A LT 513601	
UNMK 203 DP 513601	UNMK 204 DP 513601	ob190	113°32'00"	C		739.03 C		
UNMK 204 DP 513601	UNMK 205 DP 513601	ob191	105°48'00"	A	LT 513601	0°00'00"	114.86 A LT 513601	
UNMK 205 DP 513601	UNMK 100 DP 549488	ob192	113°06'30"	C		71.32 C		
UNMK 101 DP 549488	UNMK 170 DP 549488	ob185	144°41'00"	C		584.88 C		
IT 2 DP 513601	POST 170 DP 513601	ob170	207°49'00"	A	LT 513601	0°00'00"	114.00 A LT 513601	
IS 5 DP 513601	UNMK 200 DP 513601	ob179	41°54'00"	C		98.86 C		

# Mark and Vector

Survey Number DP 549488  
Meridional Circuit Amuri 2000

From	To	Code	Chord Bearing	Arc Length	Radius	Adpt Surv
UNMK DP 342890	UNMK DP 342890	ob193	137°18'00"	29.13	30.00 A	DP 342890
UNMK DP 342890	UNMK DP 342890	ob196	228°48'00"	18.37	50.00 A	DP 342890
UNMK DP 342890	UNMK DP 342890	ob195	240°30'00"	2.03	50.00 A	DP 342890
UNMK DP 342890	UNMK DP 342890	ob194	250°15'00"	15.00	50.00 A	DP 342890

Mark Name	Mark Condition	Description
IS 3 DP 513601		Dn 0.2
IS 4 DP 513601		flush atop stobbank
IT 2 DP 513601		Dn 0.2
POST 101 DP 513601		Iron post bdy 60yrs, reinstates DP 9242
POST 170 DP 513601		Conc post, reinstated DP 9242

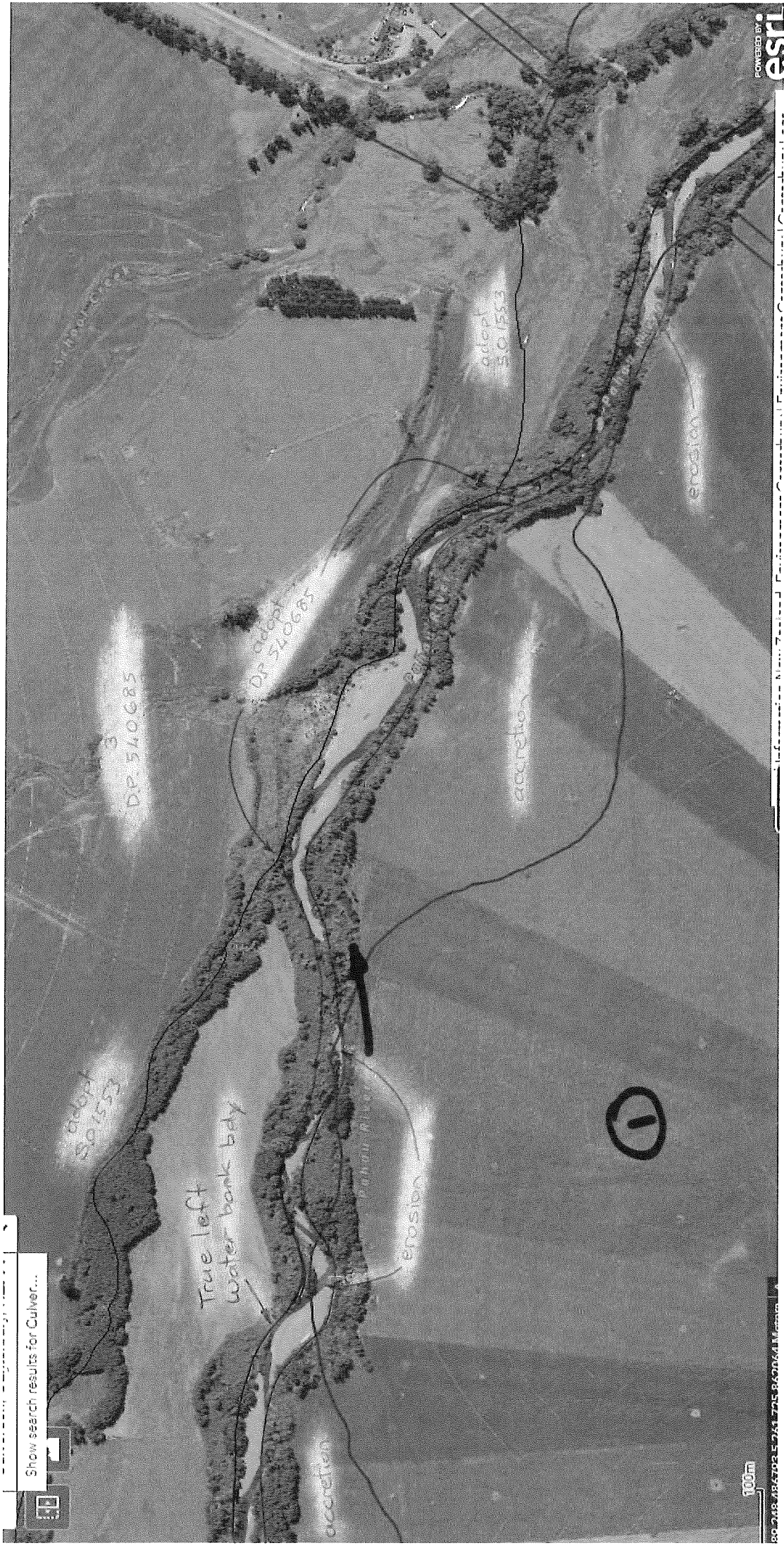
\*\*\* End of Report \*\*\*



Plan Graphic 1 of 3







Show search results for Culver...



100m

80 248 484702.5 267 225 842064 M

POWERED BY esri



Plan Graphic 3 of 3 RT bay plotted from S.O 1553



R.T. BAY  
OP 356939

True left  
water-bay  
bank

accretion

True right  
water-bay bank  
2m high

erosion

accretion

①

②



# Schedule / Memorandum

Land Registration District

**Canterbury**

Survey Number

**LT 549488**

Territorial Authority (the Council)

**Hurunui District**

## Schedule of Existing Easements

Last Edited: 23 Mar 2023 10:58:27

<u>Purpose</u>	<u>Shown</u>	<u>Burdened Land</u> ( <u>Servient Tenement</u> )	<u>Creating Document Reference</u>
Right to convey water and electric power	A, B, D, J	Lot 2	EI 6407082.5
Right to convey electric power	C, E	Lot 2	EI 6407082.5
Right to discharge sewage	B, C, D, E, F, G, H, J, K	Lot 2	EI 6407082.5

## Schedule of Easements in Gross

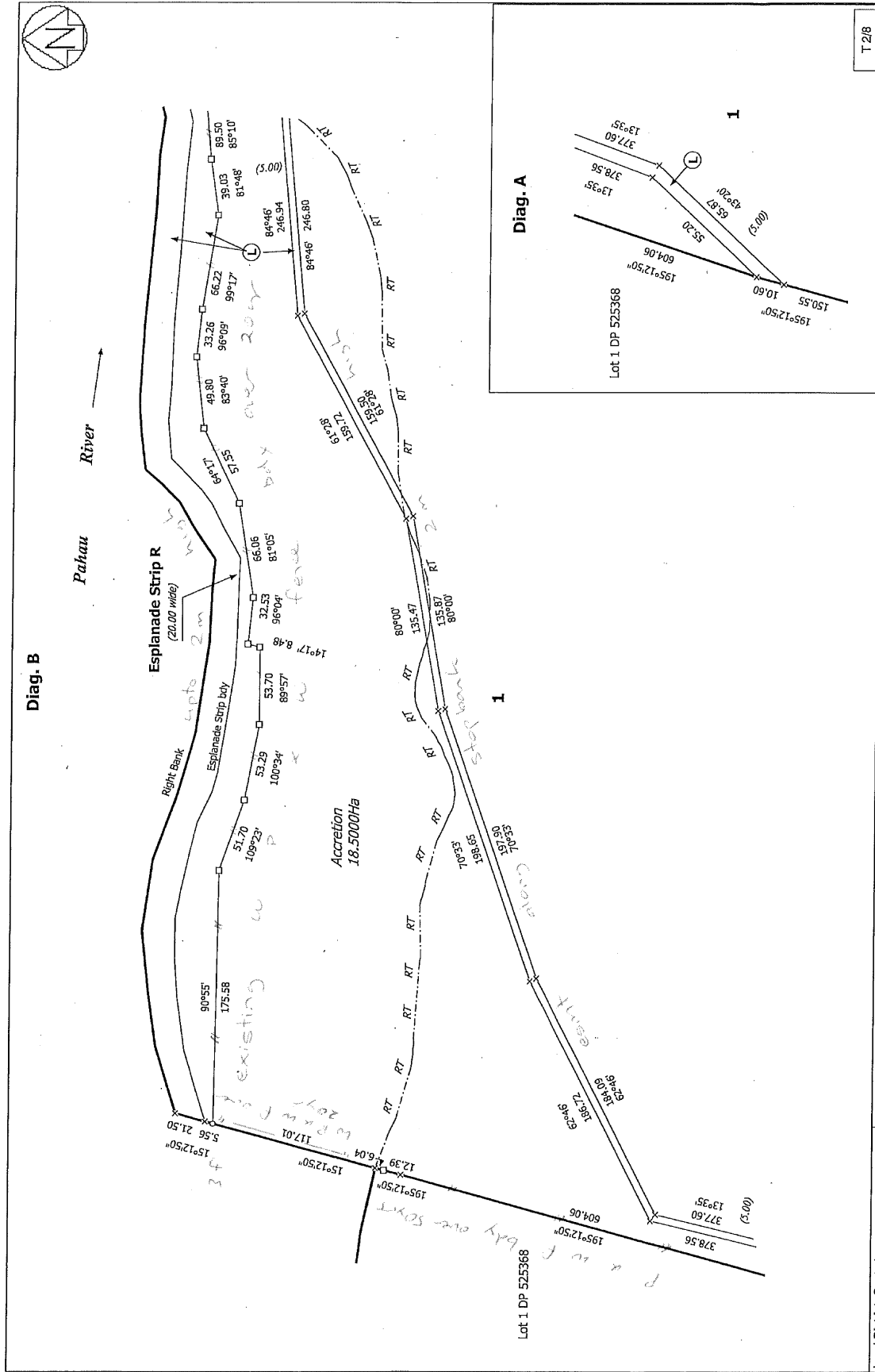
Last Edited: 23 Mar 2023 10:59:56

<u>Purpose</u>	<u>Shown</u>	<u>Burdened Land</u> ( <u>Servient Tenement</u> )	<u>Grantee</u>
Right to carry out flood protection works	L	Lot 1	Canterbury Regional Council
	M	Lot 2	Canterbury Regional Council

## Notes

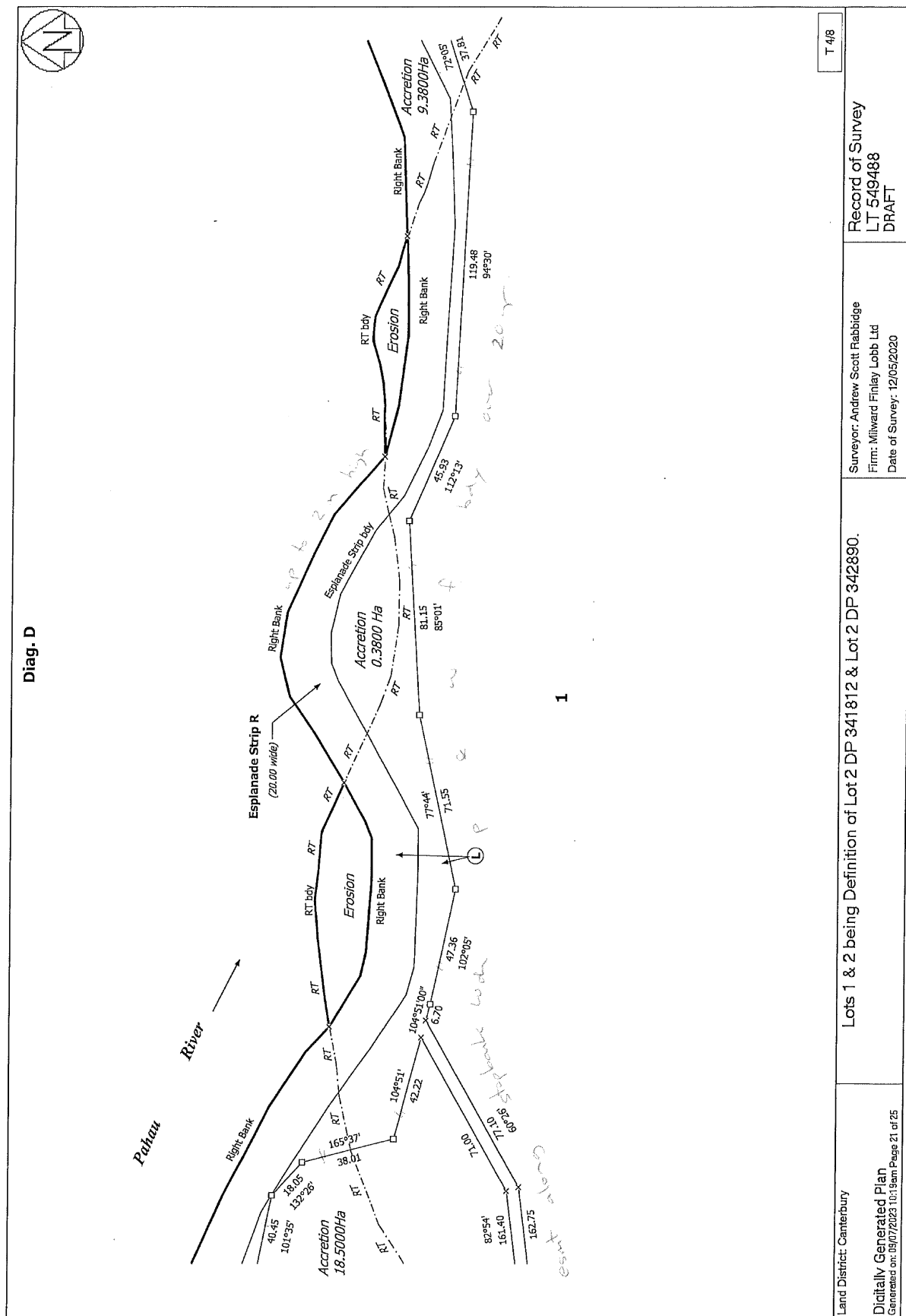
Last Edited: 15 Jul 2023 13:05:14

Esplanade Strip R is existing, created by Esplanade Instrument 6407137.5. Esplanade Strip S is existing, created by Esplanade Instrument 6407082.4



Land District: Canterbury	Surveyor: Andrew Scott Rabbidge Firm: Milward Finlay Lobb Ltd Date of Survey: 12/05/2020	Record of Survey LT 549488 DRAFT
Digitally Generated Plan Generated on: 09/07/2023 10:19am Page 19 of 25	Lots 1 & 2 being Definition of Lot 2 DP 341812 & Lot 2 DP 342890.	
Occupation Diagrams		
6 pages		





T 4/8

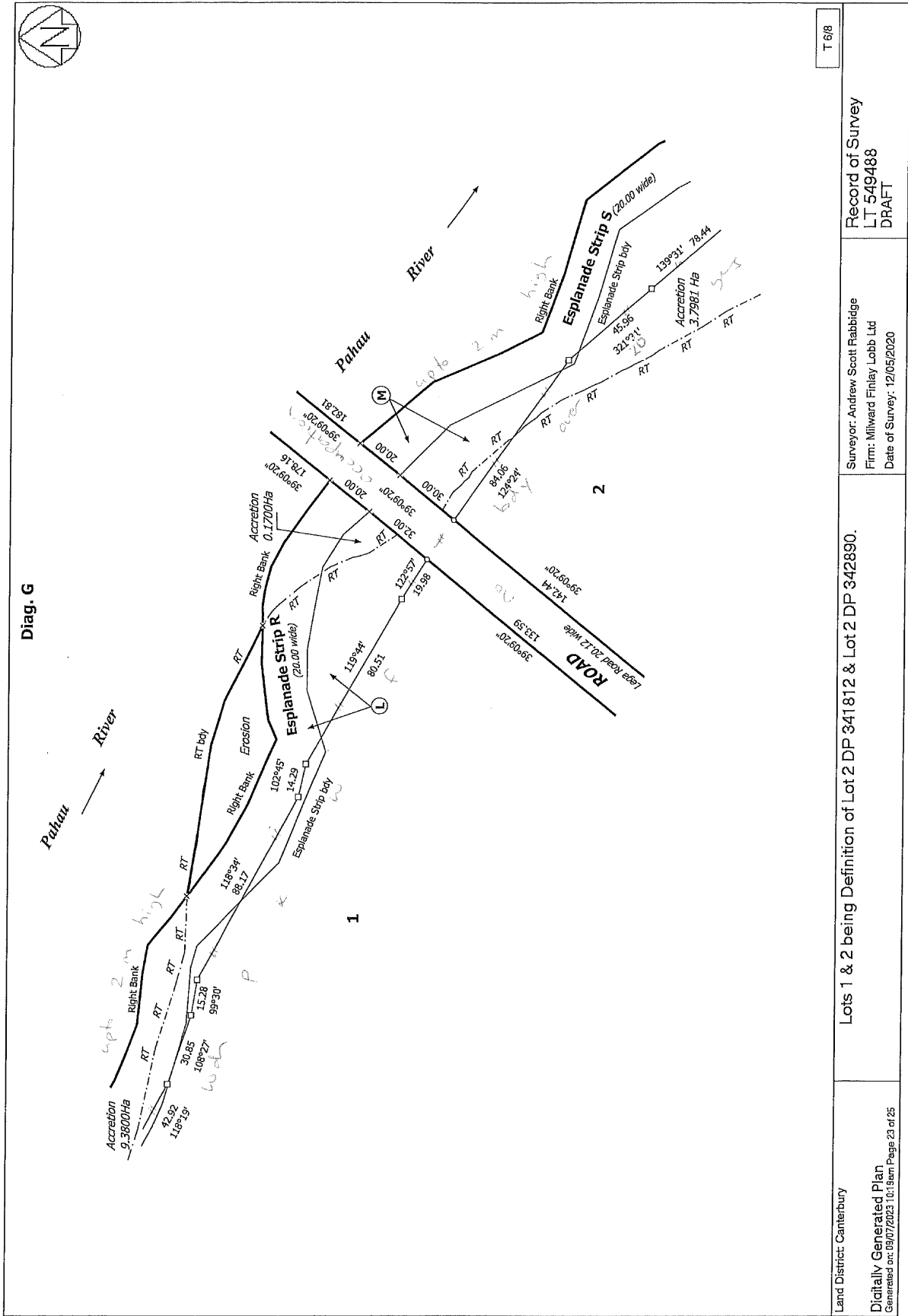
Record of Survey  
LT 549488  
DRAFT

Surveyor: Andrew Scott Rabbidge  
Firm: Milward Finlay Lobb Ltd  
Date of Survey: 12/05/2020

Lots 1 & 2 being Definition of Lot 2 DP 341812 & Lot 2 DP 342890.

Land District: Canterbury  
Digitally Generated Plan  
Generated on: 09/07/2023 10:19am Page 21 of 25





T 6/8

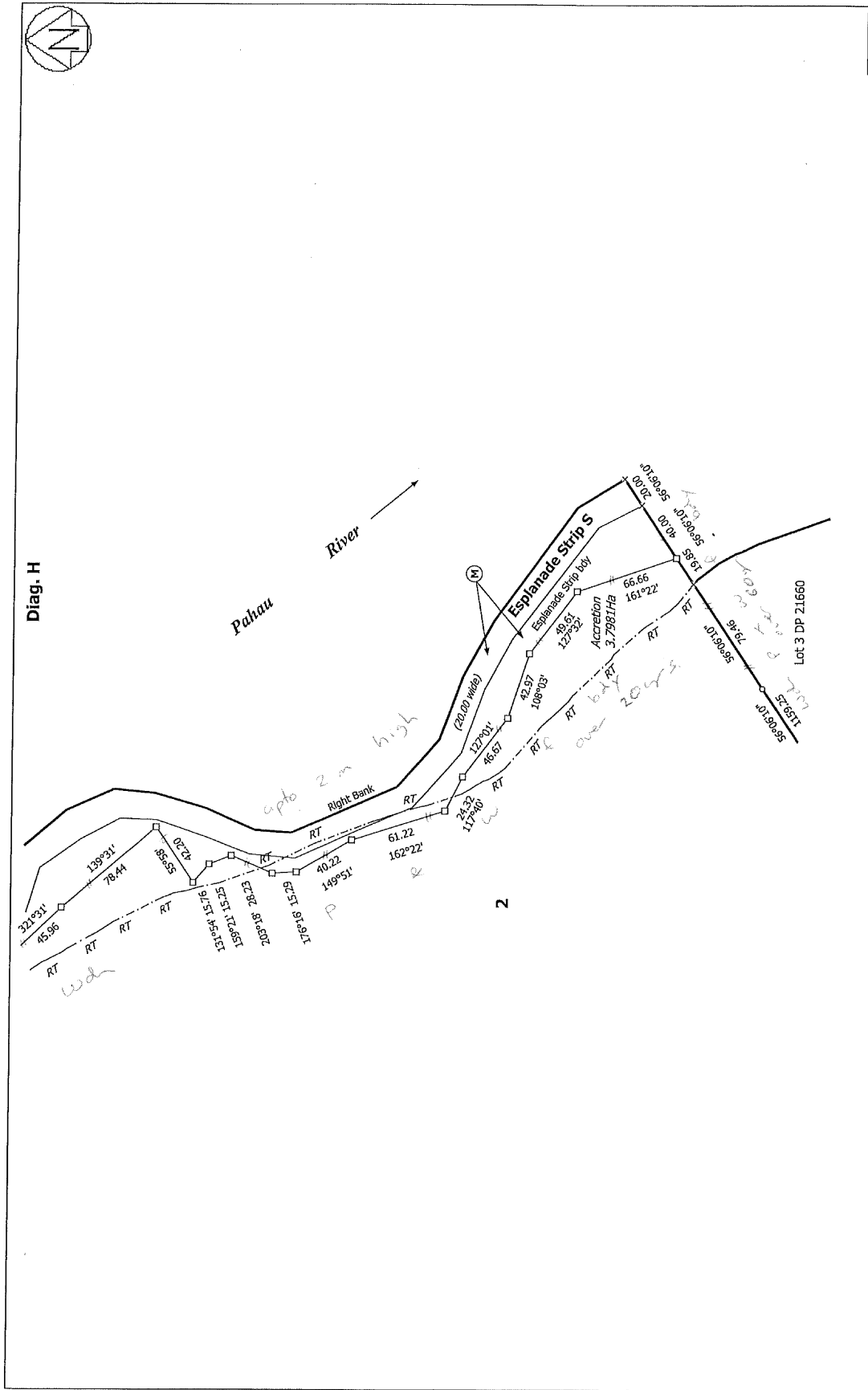
Record of Survey  
LT 549488  
DRAFT

Surveyor: Andrew Scott Rabbidge  
Firm: Milward Finlay Lobb Ltd  
Date of Survey: 12/05/2020

Lots 1 & 2 being Definition of Lot 2 DP 341812 & Lot 2 DP 342890.

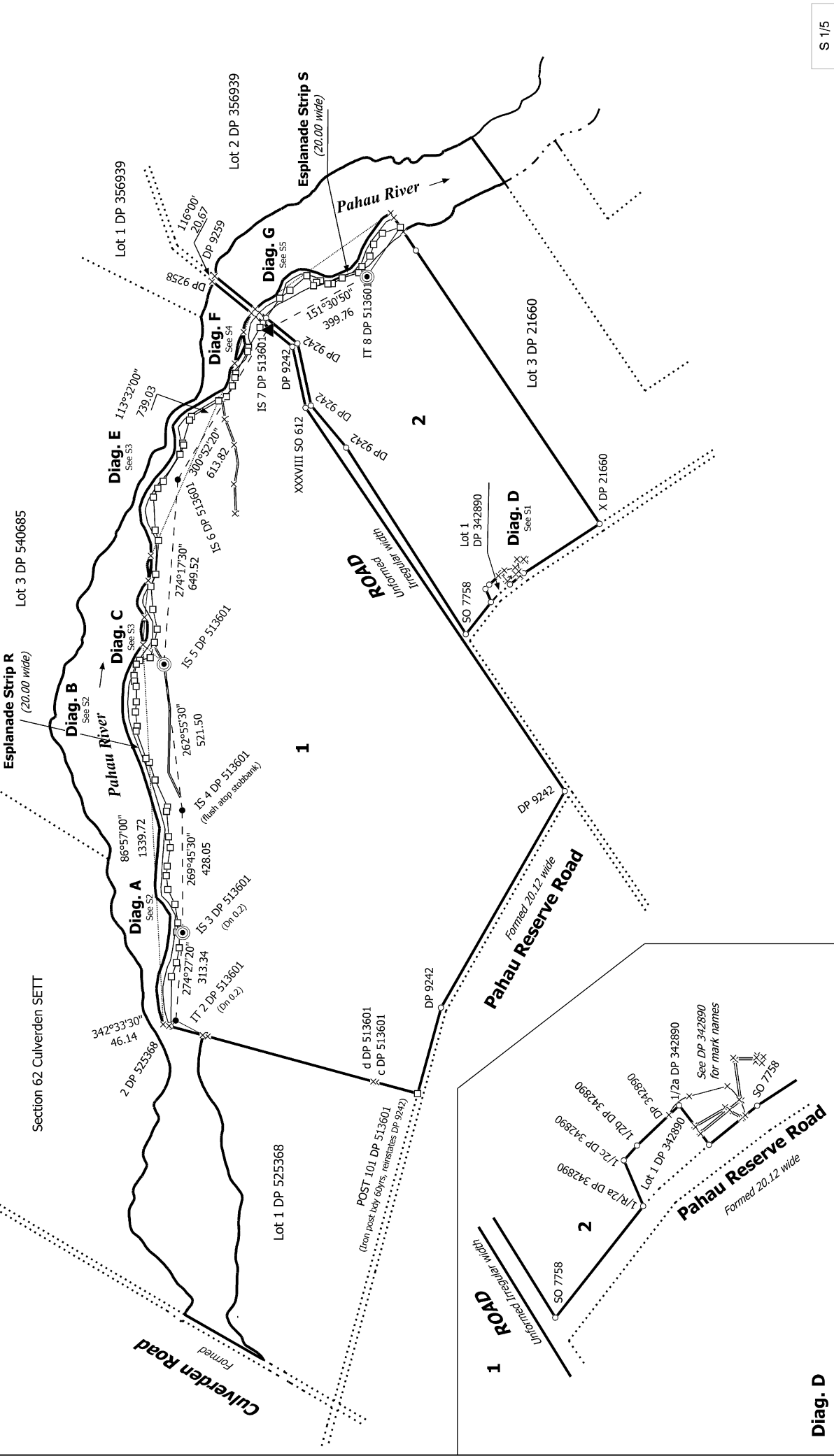
Land District: Canterbury  
Digitally Generated Plan  
Generated on: 09/07/2023 10:19am Page 23 of 25





T 7/8	Record of Survey LT 549488 DRAFT	Surveyor: Andrew Scott Rabbidge Firm: Milward Finlay Lobb Ltd Date of Survey: 12/05/2020	Land District: Canterbury
Lots 1 & 2 being Definition of Lot 2 DP 341812 & Lot 2 DP 342890.		Digitally Generated Plan Generated on: 19/07/2023 10:51am Page 24 of 25	

6

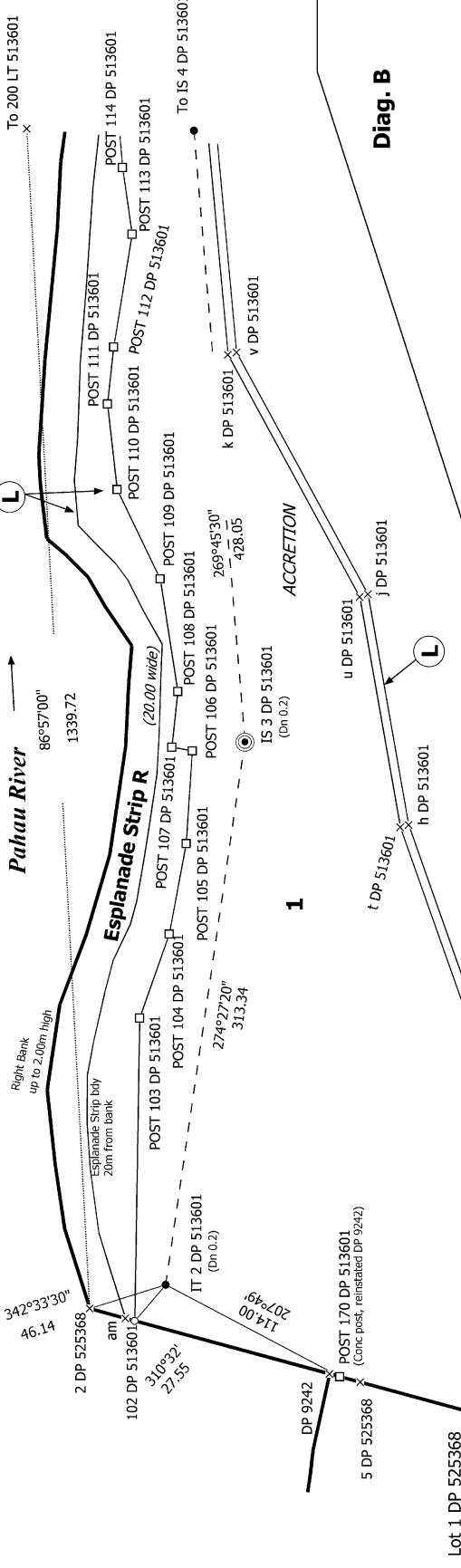


S 1/5

**Diag. D**

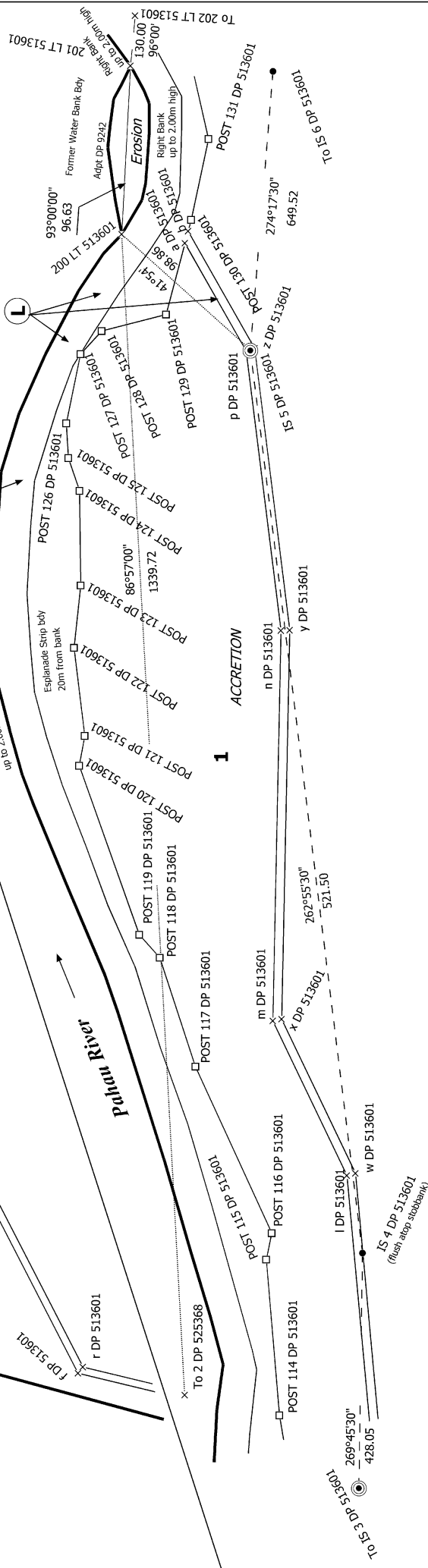
<p>Land District: Canterbury</p> <p><b>Digitally Generated Plan</b></p> <p>Generated on: 22/09/2023 2:01pm Page 22 of 34</p>	<p>Lot 1 &amp; 2 being Definition of Lot 2 DP 341812 &amp; Lot 2 DP 342890.</p>	<p>Surveyor: Andrew Scott Rabbidge          Firm: Milward Finlay Lobb Ltd          Date of Survey: 5/07/2017</p>	<p>Record of Survey          LT 549488          Approved on: 22/09/2023</p>
------------------------------------------------------------------------------------------------------------------------------	---------------------------------------------------------------------------------	--------------------------------------------------------------------------------------------------------------------------	-------------------------------------------------------------------------------------

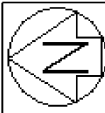
**Diag. A**



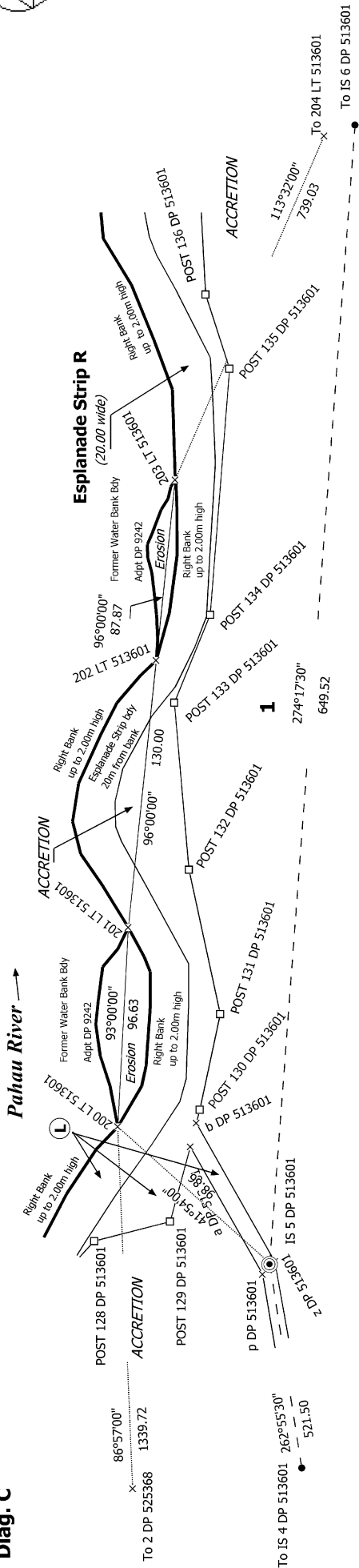
**Diag. B**

**Esplanade Strip R**  
(20.00 wide)

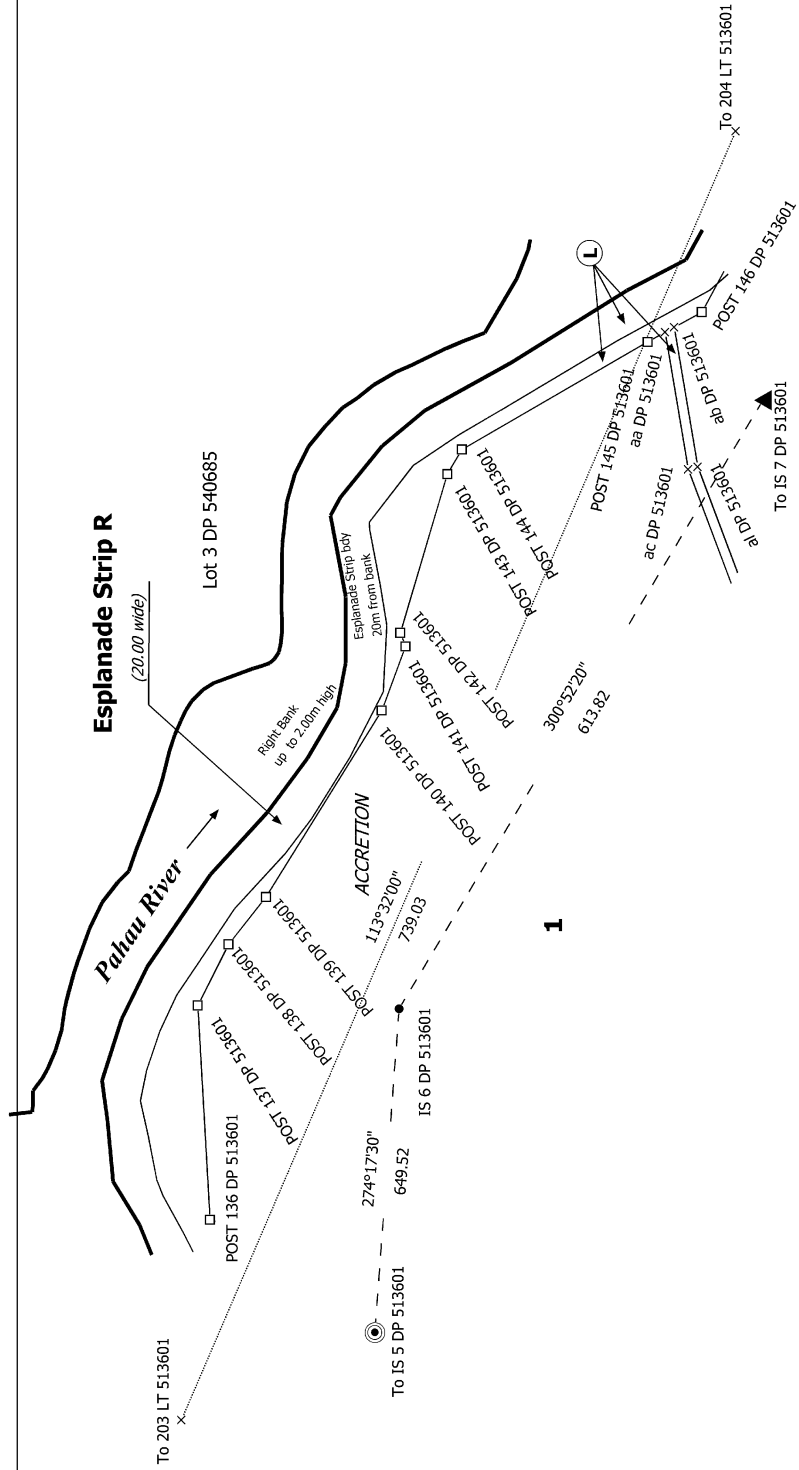




**Diag. C**



**Diag. E**



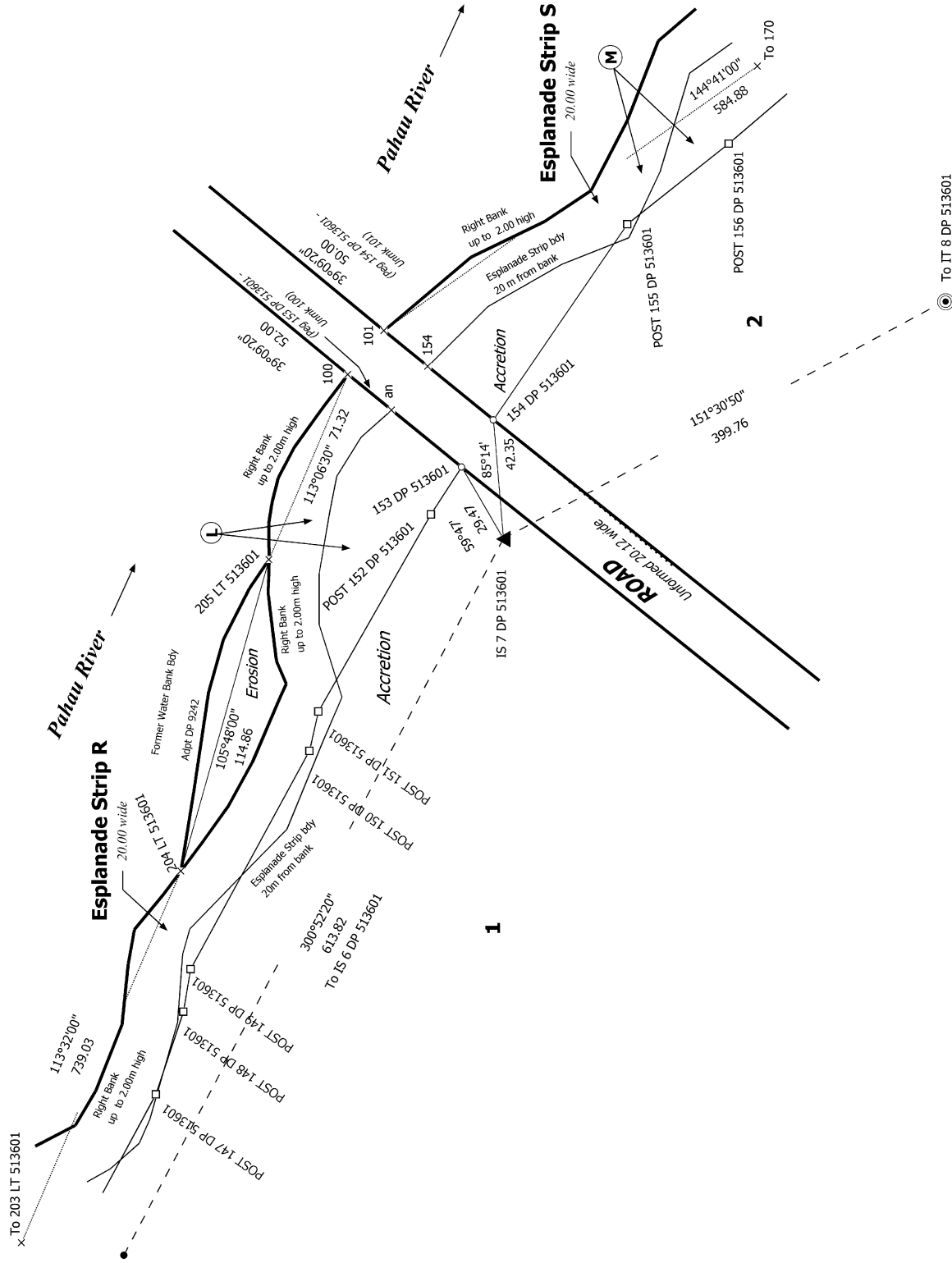
Land District: Canterbury

Lots 1 & 2 being Definition of Lot 2 DP 341812 & Lot 2 DP 342890.

Surveyor: Andrew Scott Rabbidge  
Firm: Milward Finlay Lobb Ltd  
Date of Survey: 5/07/2017

Record of Survey  
LT 549488  
Approved on: 22/09/2023

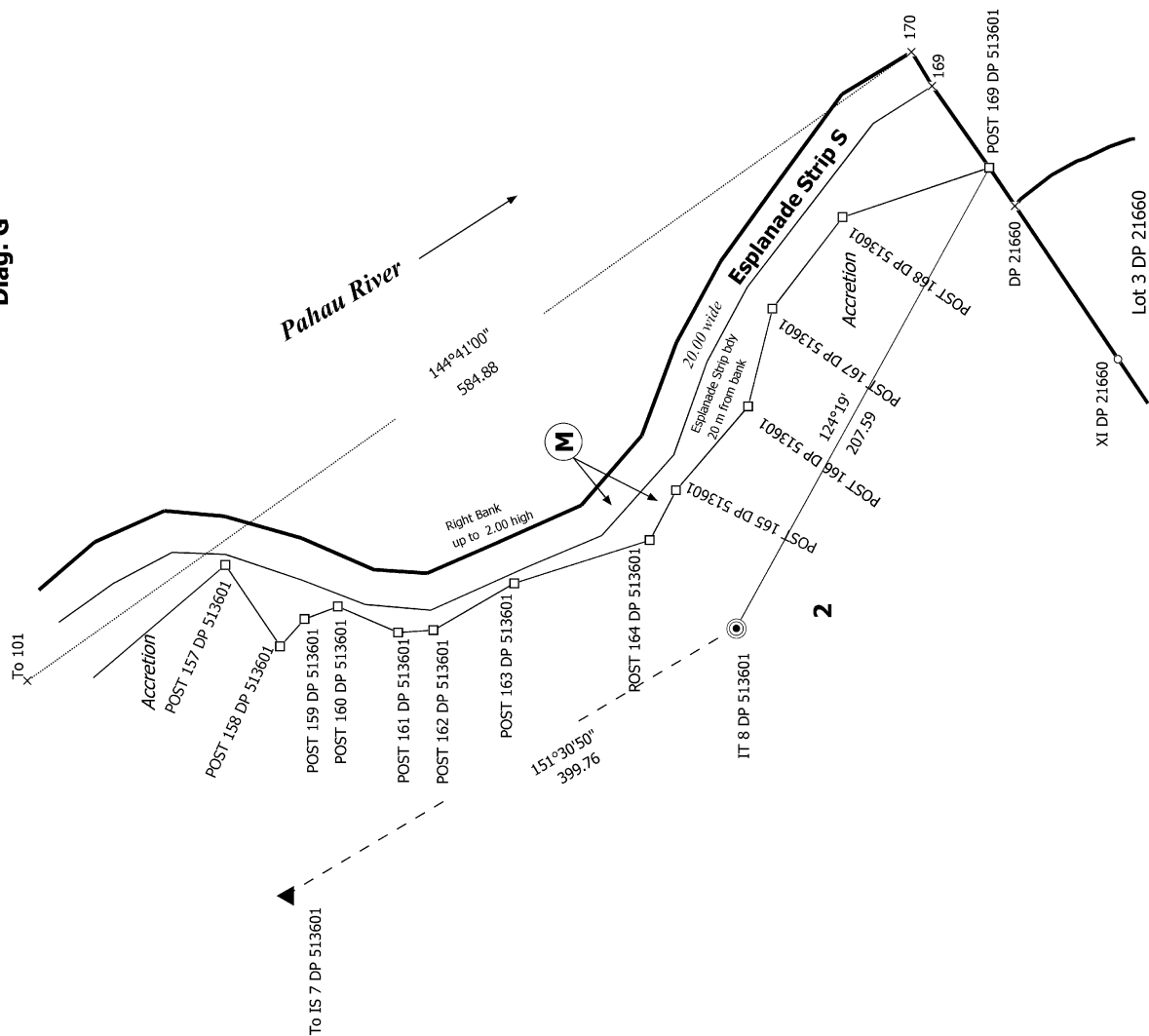
Diag. F



To IT 8 DP 513601

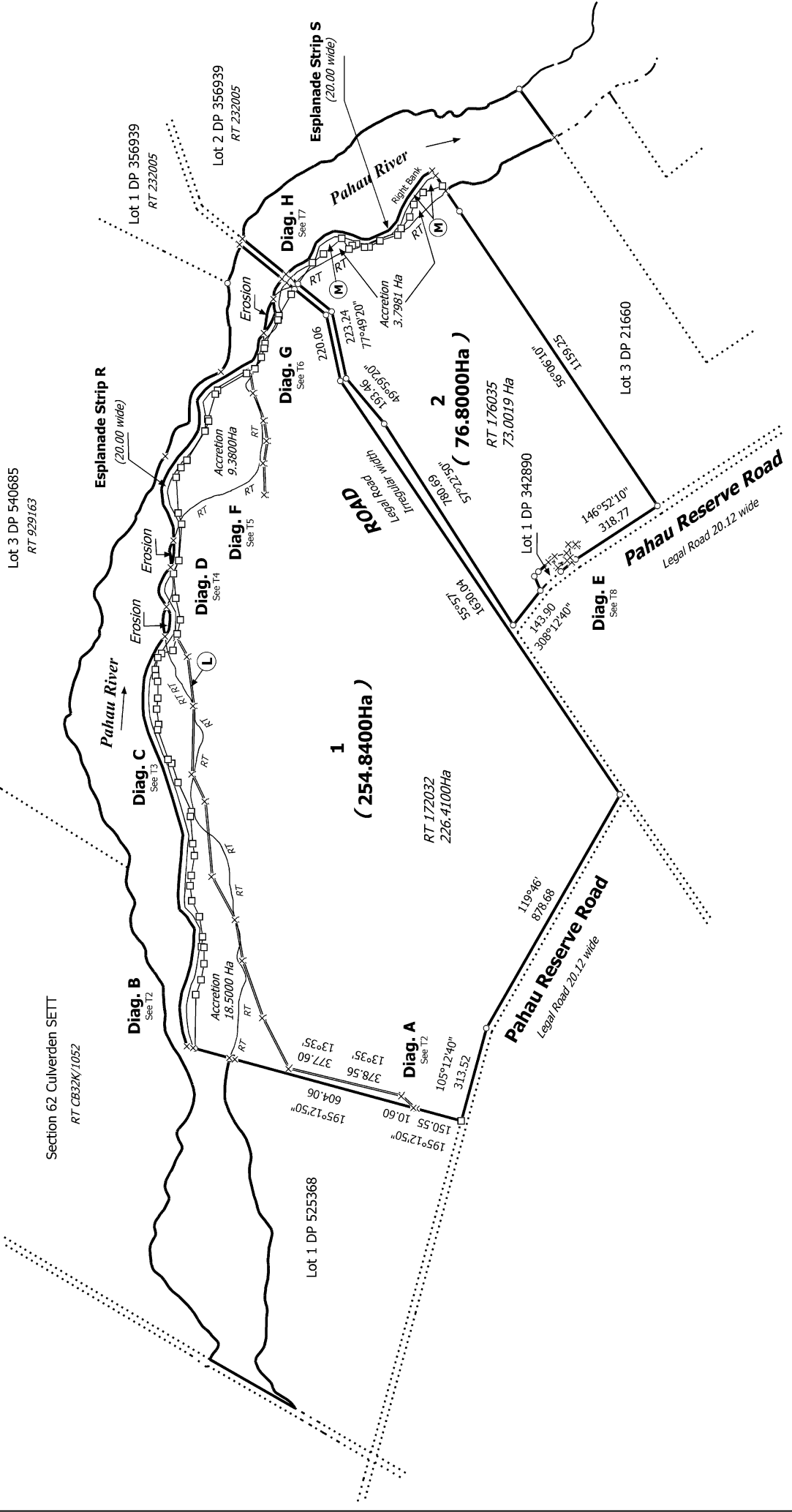


Diag. G



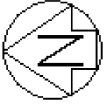


Non Primary



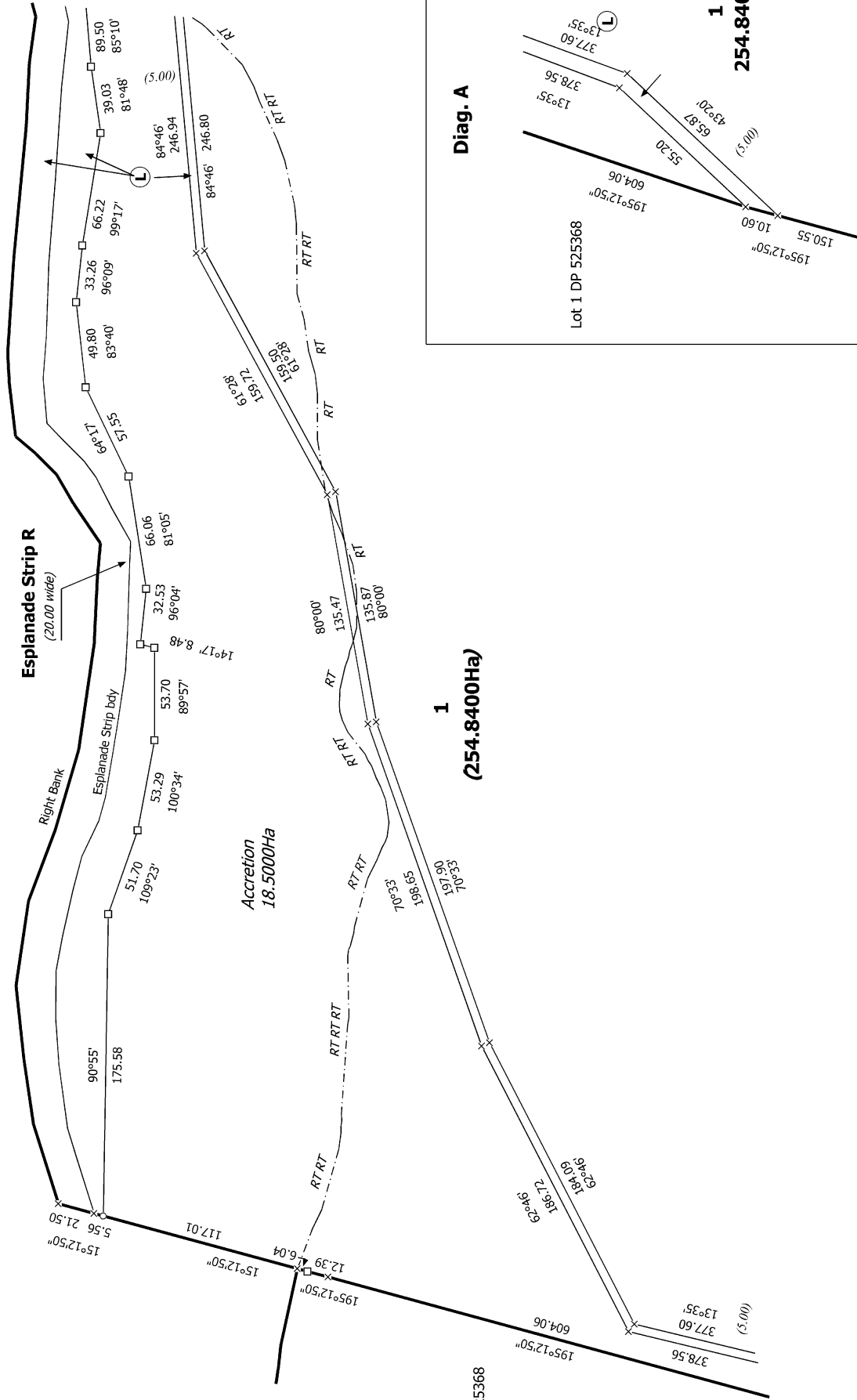
T 1/8

<p>Land District: Canterbury</p> <p><b>Digitally Generated Plan</b></p> <p>Generated on: 22/09/2023 2:01pm Page 27 of 34</p>	<p><b>Lots 1 &amp; 2 being Definition of Lot 2 DP 341812 &amp; Lot 2 DP 342890.</b></p>	<p>Surveyor: Andrew Scott Rabbidge          Firm: Milward Finlay Lobb Ltd          Date of Survey: 5/07/2017</p>	<p>Record of Survey          LT 549488          Approved on: 22/09/2023</p>
------------------------------------------------------------------------------------------------------------------------------	-----------------------------------------------------------------------------------------	--------------------------------------------------------------------------------------------------------------------------	-------------------------------------------------------------------------------------

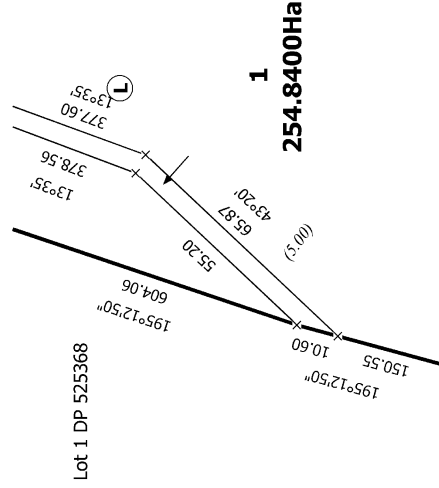


**Diag. B**

Pahau River



**Diag. A**



T 2/8

Land District: Canterbury

**Digitally Generated Plan**

Generated on: 22/09/2023 2:01pm Page 28 of 34

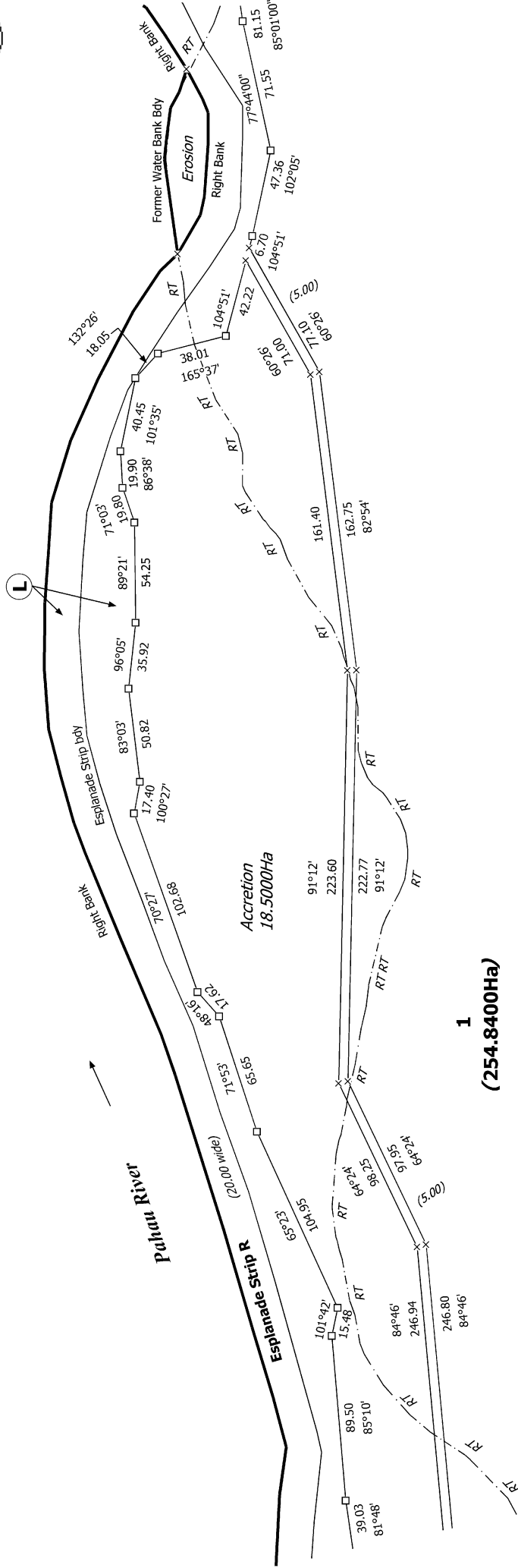
**Lots 1 & 2 being Definition of Lot 2 DP 341812 & Lot 2 DP 342890.**

Surveyor: Andrew Scott Rabbidge  
Firm: Milward Finlay Lobb Ltd  
Date of Survey: 5/07/2017

Record of Survey  
LT 549488  
Approved on: 22/09/2023



**Diag. C**



T 3/8

Land District: Canterbury

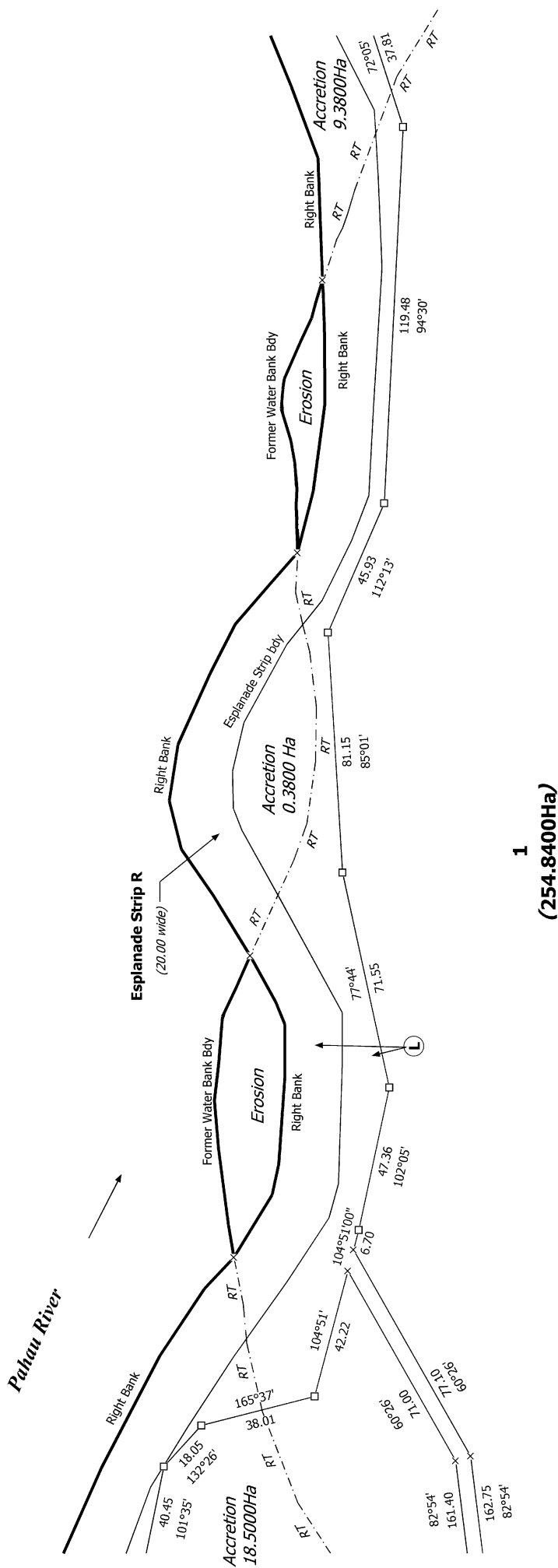
**Digitally Generated Plan**  
Generated on: 22/09/2023 2:01pm Page 29 of 34

**Lots 1 & 2 being Definition of Lot 2 DP 341812 & Lot 2 DP 342890.**

Surveyor: Andrew Scott Rabbidge  
Firm: Milward Finlay Lobb Ltd  
Date of Survey: 5/07/2017

Record of Survey  
LT 549488  
Approved on: 22/09/2023

Diag. D

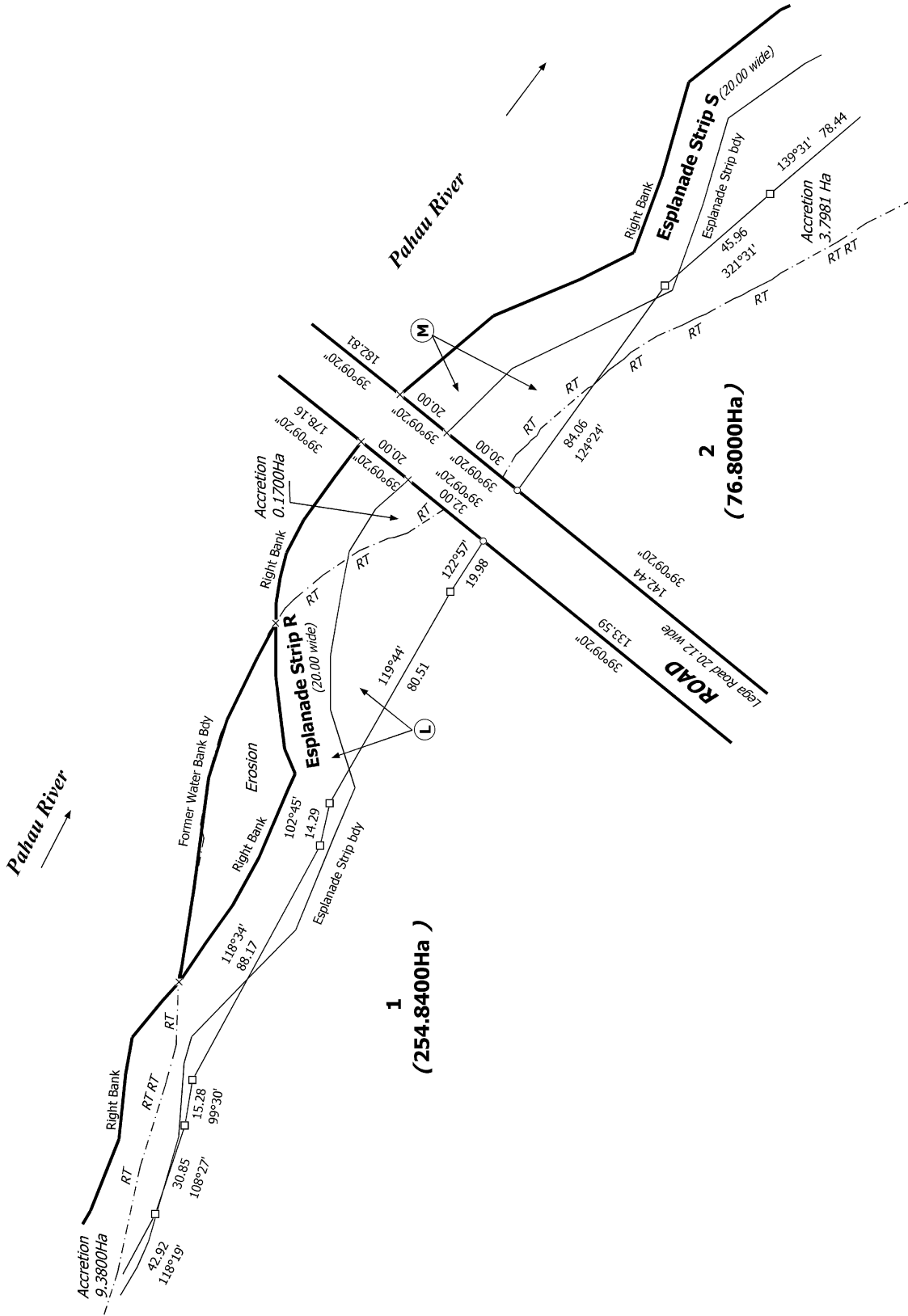


<p>Land District: Canterbury</p> <p><b>Digitally Generated Plan</b></p> <p>Generated on: 22/09/2023 2:01pm Page 30 of 34</p>	<p><b>Lots 1 &amp; 2 being Definition of Lot 2 DP 341812 &amp; Lot 2 DP 342890.</b></p>	<p>Surveyor: Andrew Scott Rabbidge                  Firm: Milward Finlay Lobb Ltd                  Date of Survey: 5/07/2017</p>	<p>Record of Survey                  LT 549488                  Approved on: 22/09/2023</p>
------------------------------------------------------------------------------------------------------------------------------	-----------------------------------------------------------------------------------------	------------------------------------------------------------------------------------------------------------------------------------------	-----------------------------------------------------------------------------------------------------



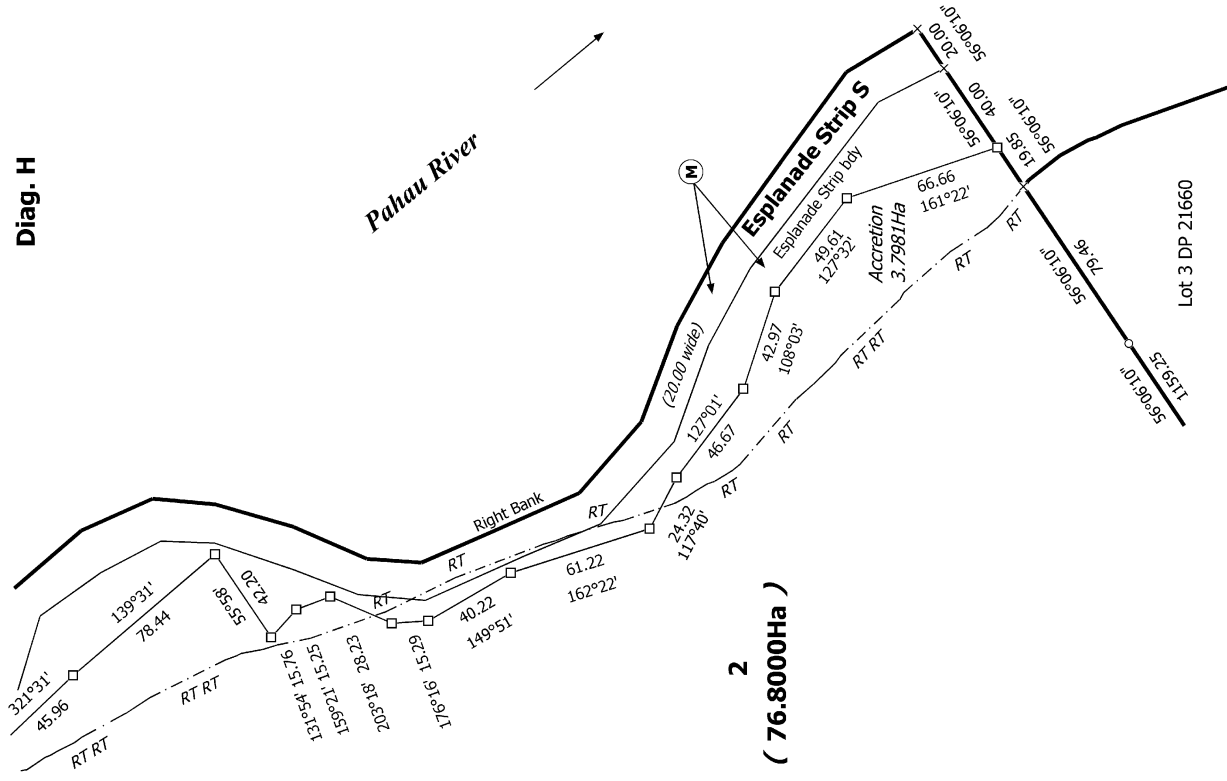


Diag. G





Diag. H



2  
( 76.8000Ha )

T 7/8

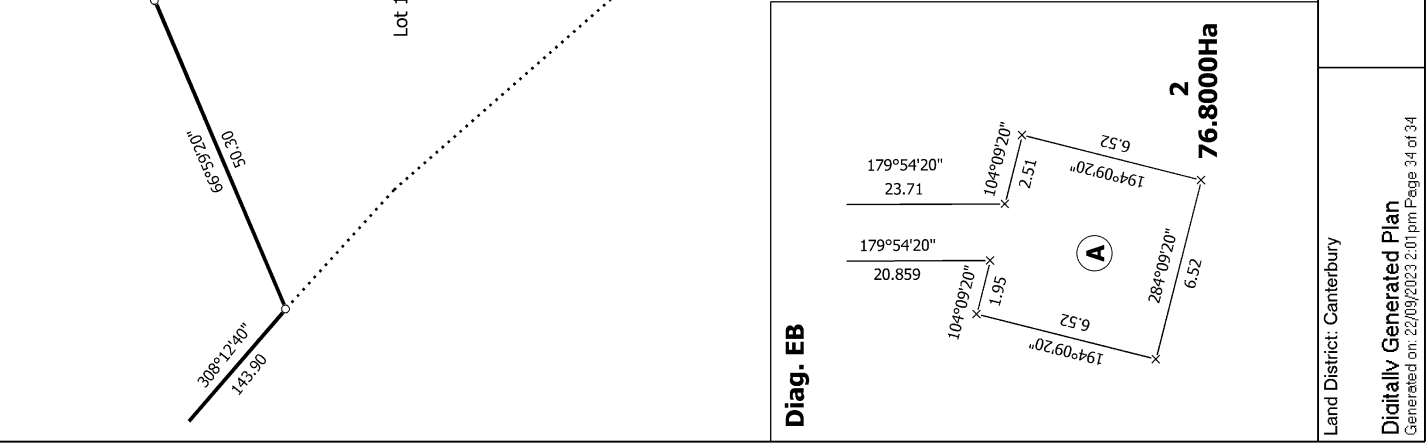
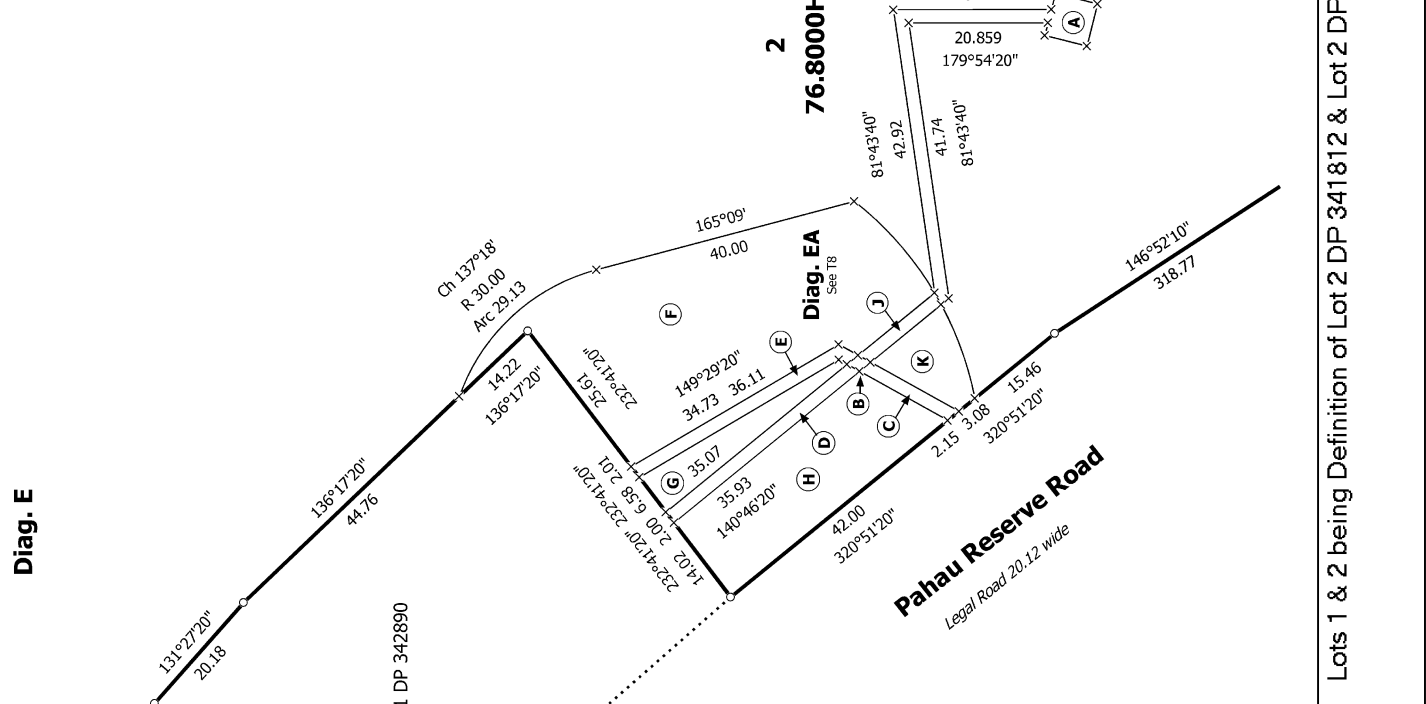
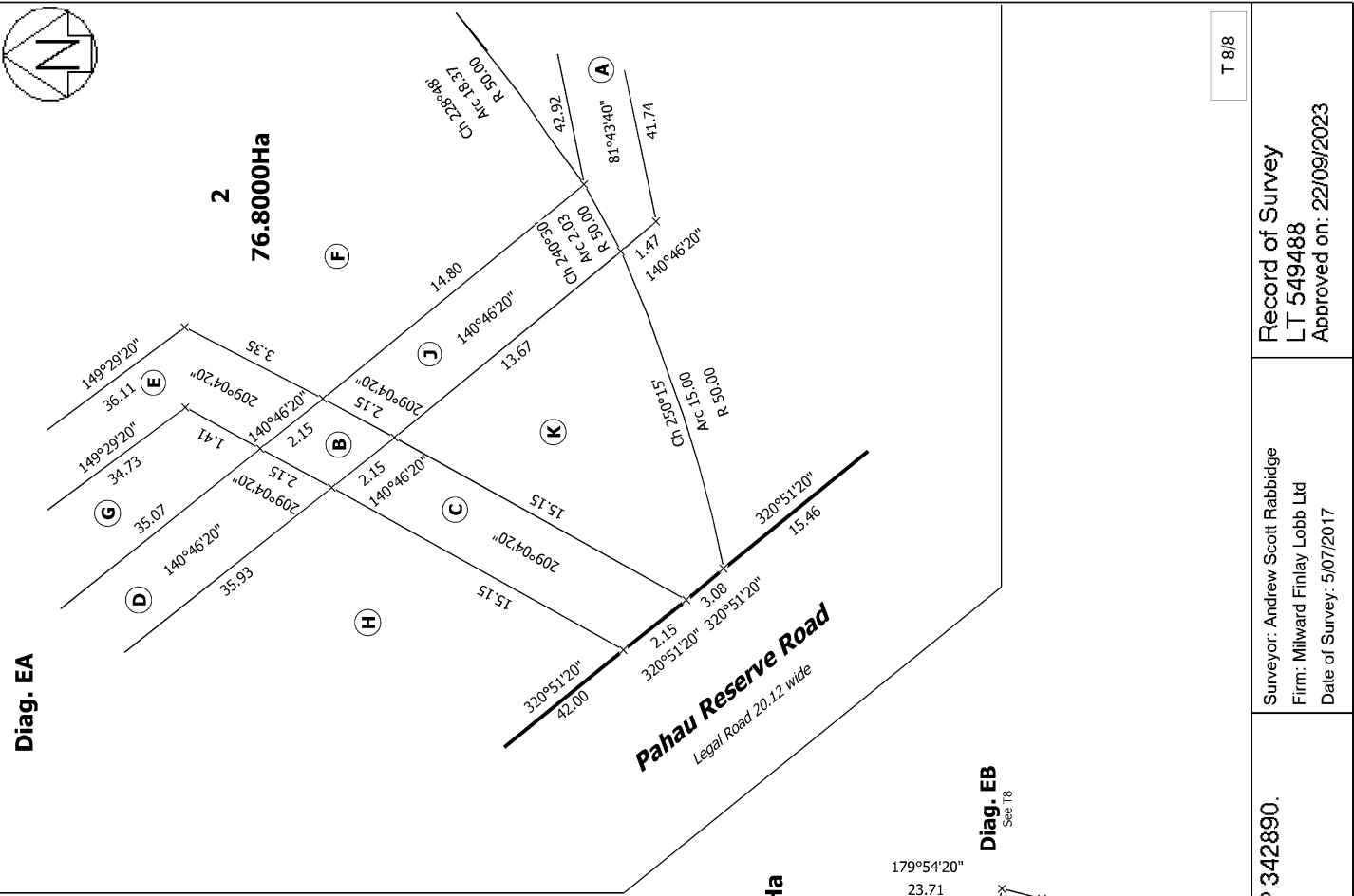
Record of Survey  
 LT 549488  
 Approved on: 22/09/2023

Surveyor: Andrew Scott Rabbidge  
 Firm: Milward Finlay Lobb Ltd  
 Date of Survey: 5/07/2017

Lots 1 & 2 being Definition of Lot 2 DP 341812 & Lot 2 DP 342890.

Land District: Canterbury

**Digitally Generated Plan**  
 Generated on: 22/09/2023 2:01pm Page 33 of 34



T 8/8

Record of Survey  
LT 549488  
Approved on: 22/09/2023

Surveyor: Andrew Scott Rabbidge  
Firm: Milward Finlay Lobb Ltd  
Date of Survey: 5/07/2017

Lots 1 & 2 being Definition of Lot 2 DP 341812 & Lot 2 DP 342890.

Land District: Canterbury  
**Digitally Generated Plan**  
Generated on: 22/09/2023 2:01pm Page 34 of 34