

Record of Survey - DP 64635

Survey Number DP 64635
Surveyor Reference 20057 1010 FERRY RD
Surveyor Rita Winifred Dobbie Clark
Survey Firm Myall & Co Ltd
Surveyor Declaration I Rita Winifred Dobbie Clark, being a licensed cadastral surveyor, certify that--
 (a) this dataset provided by me and its related survey are accurate, correct and in accordance with the Cadastral Survey Act 2002 and Cadastral Survey Rules 2021; and
 (b) the survey was undertaken by me or under my personal direction.
 Declared on 07 Mar 2023 03:46 PM

Survey Details

Dataset Description REDEVELOPMENT OF UNIT E AND AU E1 AND E2 AND PARTIAL REDEFINITION OF PART LOT 4 DP 58048
Purpose Redevelopment Unit Plan with Survey Sheet
Status Deposited **Type** Survey
Land District Canterbury **Survey Class** Class A
Meridional Circuit Mount Pleasant 2000 **Vertical Datum** Lyttelton 1937

Survey Dates

Surveyed Date 15/10/2021 **Certified Date** 07/03/2023
Submitted Date 07/03/2023 15:46:22 **Survey Approval Date** 08/03/2023
Deposit Date 09/05/2023

Referenced Surveys

Survey Number	Land District	Bearing Correction
DP 64265	Canterbury	0°00'00"
DP 58048	Canterbury	0°00'00"
SO 17512	Canterbury	0°00'00"
SO 466063	Canterbury	0°00'00"
SO 471855	Canterbury	0°00'00"
SO 489126	Canterbury	0°00'00"
DP 499052	Canterbury	0°00'00"
SO 19537	Canterbury	0°00'00"

Territorial Authorities

Christchurch City

Comprised In

RT CB42A/1222
 RT CB42A/1223
 RT CB42A/1224
 RT CB42A/1225
 RT CB37D/16



Record of Survey - DP 64635

Created Parcels

Parcels	Parcel Intent	Area	RT Reference
Principal Unit Z1 Deposited Plan 64635	Principal Unit		1024226
Principal Unit D1 Deposited Plan 64635	Principal Unit		1024227
Accessory Unit Z2 Deposited Plan 64635	Accessory Unit		1024226
Accessory Unit D2 Deposited Plan 64635	Accessory Unit		1024227
Accessory Unit Z3 Deposited Plan 64635	Accessory Unit		1024226
Accessory Unit D3 Deposited Plan 64635	Accessory Unit		1024227
Total Area		<hr/> 0.0000 Ha	

Mark and Vector

Survey Number DP 64635

Meridional Circuit Mount Pleasant 2000

From	To	Code	Bearing	Adpt Surv	Bearing Correction	Distance	Adpt Surv	Class
IT IV FB 2231/136 POSN ABT2011	MA I DP 53642 (UNPROVEN)	ob0	105°51'00"	A SO 471855	0°00'00"	82.01	A SO 471855	
MA I DP 53642 (UNPROVEN)	MA I DP 75173 (UNPROVEN)	ob7	204°11'20"	A SO 471855	0°00'00"	78.25	A SO 471855	
MA I DP 75173 (UNPROVEN)	IR NO REC DP 347589 (UNPROVEN)	ob8	160°11'20"	A SO 471855	0°00'00"	65.59	A SO 471855	
IR NO REC DP 347589 (UNPROVEN)	IR 2 SO 471855	ob9	263°33'30"	A SO 471855	0°00'00"	151.08	A SO 471855	
IR 2 SO 471855	IR 4 SO 471855	ob10	315°35'10"	A SO 471855	0°00'00"	354.48	A SO 471855	
IR 4 SO 471855	NAIL IV SO 17512	ob15	107°52'00"	A SO 471855	0°00'00"	49.34	A SO 471855	
NAIL IV SO 17512	IT IV FB 2231/136 POSN ABT2011	ob16	103°05'40"	A SO 471855	0°00'00"	289.73	A SO 471855	
IR 2 SO 471855	NAIL II FB2231P135	ob11	315°30'20"	M		296.21	M	
NAIL II FB2231P135	IT 3 DP 462916	ob19	339°37'00"	M		10.05	M	
IT 3 DP 462916	MA 2 DP 64635	ob21	102°21'10"	M		236.31	M	
MA 2 DP 64635	MA 1 DP 64635	ob23	104°09'00"	M		147.37	M	
MA 1 DP 64635	IS 2 SO 489126	ob29	203°32'45"	M		116.94	M	
IS 2 SO 489126	IR 2 SO 471855	ob30	256°55'20"	M		119.02	M	
IT 3 DP 462916	NAIL IV SO 17512	ob22	29°55'00"	A SO 471855	0°00'00"	20.05	A SO 471855	
MA 2 DP 64635	IT III SO 19537	ob24	193°34'40"	M		58.77	M	
IT III SO 19537	IT 3 DP 64635	ob31	150°33'00"	M		29.73	M	
IT 3 DP 64635	IT VI DP 58048	ob34	170°46'00"	M		22.82	M	
IT VI DP 58048	IR 2 SO 471855	ob36	200°32'50"	M		69.00	M	
MA 2 DP 64635	IT V FB 2231p136	ob25	111°33'45"	M		59.60	M	
IT V FB 2231p136	MA 1 DP 64635	ob37	99°10'10"	M		88.61	M	
MA 2 DP 64635	PEG XIII SO 19537	ob26	196°55'10"	M		50.85	M	
MA 2 DP 64635	PEG XIV SO 19537	ob27	196°53'30"	M		52.33	M	
IT III SO 19537	IT II DP 64265	ob32	158°12'30"	M		11.25	M	
IR 2 SO 471855	IS II SO 19537	ob12	341°01'10"	M		147.19	M	
NAIL II FB2231P135	IT IV FB 2231/136 POSN ABT2011	ob20	97°39'45"	A DP 499052	0°00'00"	291.29	A DP 499052	

Mark and Vector

Survey Number DP 64635

Meridional Circuit Mount Pleasant 2000

From	To	Code	Bearing	Adpt Surv	Bearing Correction	Distance	Adpt Surv	Class
IR 2 SO 471855	IT IV FB 2231/136 POSN ABT2011	ob13	25°11'10"	A SO 471855	0°00'00"	190.55	A SO 471855	
IR 2 SO 471855	IS I DP 54065	ob14	88°51'50"	A SO 489126	0°00'00"	86.23	A SO 489126	
IS I DP 54065	IS 2 SO 489126	ob17	49°41'10"	A SO 489126	0°00'00"	38.98	A SO 489126	
IT V FB 2231p136	IS X DP 12424	ob38	13°43'15"	A SO 17512	0°00'00"	20.28	A SO 17512	
IS X DP 12424	NAIL V SO 17512	ob39	13°43'15"	A SO 17512	0°00'00"	1.50	A SO 17512	
NAIL V SO 17512	IT IV FB 2231/136 POSN ABT2011	ob2	14°13'00"	A SO 466063	0°00'00"	3.14	A SO 466063	
NAIL V SO 17512	NAIL I DP 58048	ob3	283°43'15"	A SO 17512	0°00'00"	27.31	A SO 17512	
NAIL I DP 58048	NAIL II DP 58048	ob4	283°43'15"	A DP 58048	0°00'00"	90.72	A DP 58048	
NAIL II DP 58048	NAIL III DP 58048	ob6	283°43'15"	A DP 58048	0°00'00"	56.04	A DP 58048	
NAIL III DP 58048	NAIL IV SO 17512	ob18	283°43'15"	A DP 58048	0°00'00"	115.63	A DP 58048	
NAIL I DP 58048	PEG 27 DP 64635	ob5	187°13'00"	A DP 58048	0°00'00"	17.71	A DP 58048	
PEG 27 DP 64635	UNMK 30 DP 64635	ob41	193°57'40"	R		75.78	R	Class A
UNMK 30 DP 64635	PEG XIV SO 19537	ob42	320°54'00"	R		45.54	R	Class A
MA 2 DP 64635	PEG 27 DP 64635	ob28	110°27'00"	M		33.94	M	
IT III SO 19537	IS II SO 19537	ob33	295°55'20"	C		59.84	C	
IT 3 DP 64635	UNMK 30 DP 64635	ob35	100°39'00"	C		12.93	C	
PEG (32) DP 64265	PEG XIII SO 19537	ob45	193°43'15"	A DP 58048	0°00'00"	1.03	C	

Mark Name	Mark Condition	Description
IR 2 SO 471855		300mm deep, 2.0m from edge of garden, 3.3m from edge of garden.
IR 4 SO 471855		300mm deep, in grass berm, 3.5m from kerb, 3.7m from lamp post, 5.6m from MH, 9.5m from tree.
IS 2 SO 489126		flush in asphalt footpath
IS I DP 54065		0.3d
IS II SO 19537		d0.2
IT 3 DP 462916		d0.1m in grassed landscaped area in 'Kovac' property. distance to face of kerb is 5.8m. Distance to Kovac Sign is 8.3m
IT 3 DP 64635		d0.3
IT II DP 64265		d0.1

Mark and Vector

Survey Number DP 64635
Meridional Circuit Mount Pleasant 2000

Mark Name	Mark Condition	Description
IT III SO 19537		d0.1
IT IV FB 2231/136 POS		25mm Iron tube below plastic cover. Became disturbed due to 2010 and 2011 Canterbury earthquake sequence. See final position ETDW.
IT V FB 2231p136		d0.4
IT VI DP 58048		d0.1
MA 1 DP 64635		flush in kerb
MA 2 DP 64635		flush in kerb
NAIL II FB2231P135		FL in kerb
MA I DP 75173 (UNPR)	Destroyed	
NAIL I DP 58048	Destroyed	
NAIL V SO 17512	Destroyed	
IS X DP 12424	Searched For and Not Found	
MA I DP 53642 (UNPR)	Searched For and Not Found	fl in ch

***** End of Report *****

NOTES:

LEVELS IN TERMS OF ORIGINAL VERTICAL DATUM (CCC DATUM PRE-SEP 2010). CORRECTION TO LYTTELTON VERTICAL DATUM 1937 IS -9.05m.

THE UPPER LIMITS OF ACCESSORY UNITS IS RL 20.00. THE LOWER LIMITS OF ACCESSORY UNITS IS RL 10.00.

MYALL CO

Myall & Co Ltd
 PO Box 41107
 Christchurch 8247
 Phone: 03 379 5853
 info@myallco.co.nz
 www.myallco.co.nz

PLAN REF

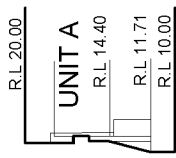
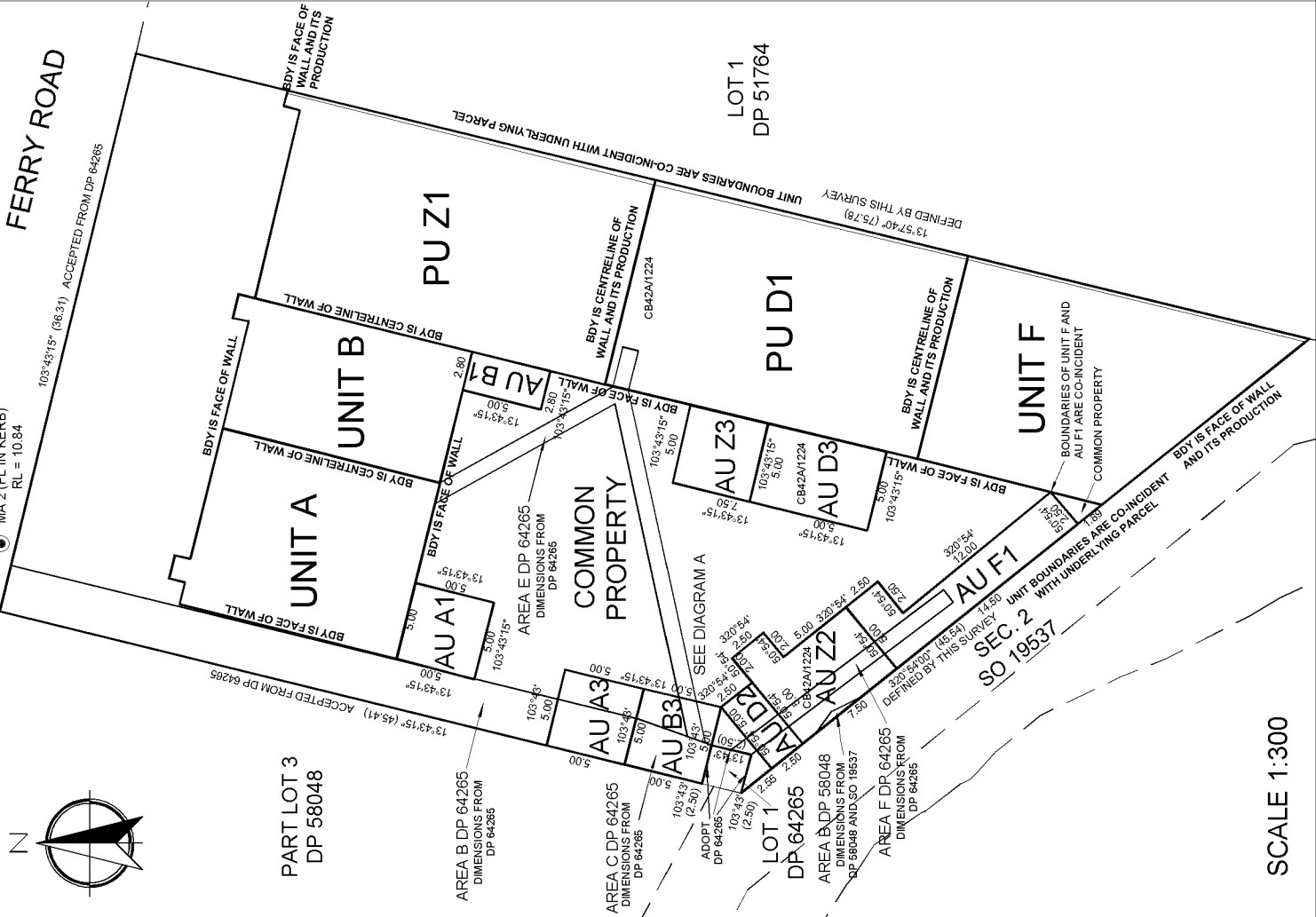
DP 64635

PROJECT NAME

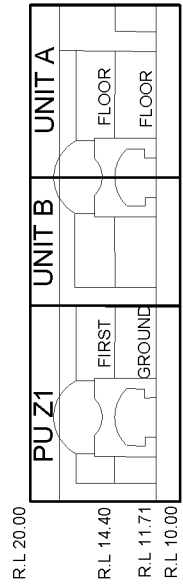
REDEVELOPMENT OF UNIT E AND AU E1 AND E2 AND PARTIAL REDEFINITION OF PART LOT 4 DP 58048

APPROVED	SCALE	DATE
R CLARK	A3	16/12/22
REF: 20057	DRAWING NO	REV
	LT 01	B

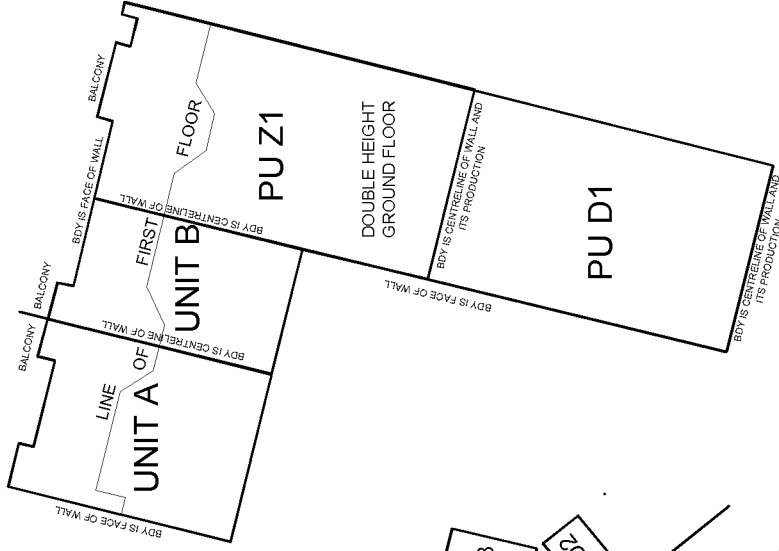
SHEET 1 OF 1



WEST ELEVATION



NORTH ELEVATION



FIRST FLOOR PLAN

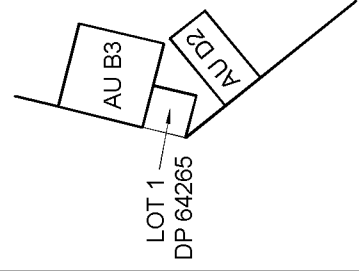


DIAGRAM A
 NOT TO SCALE

SCALE 1:300

Schedule / Memorandum

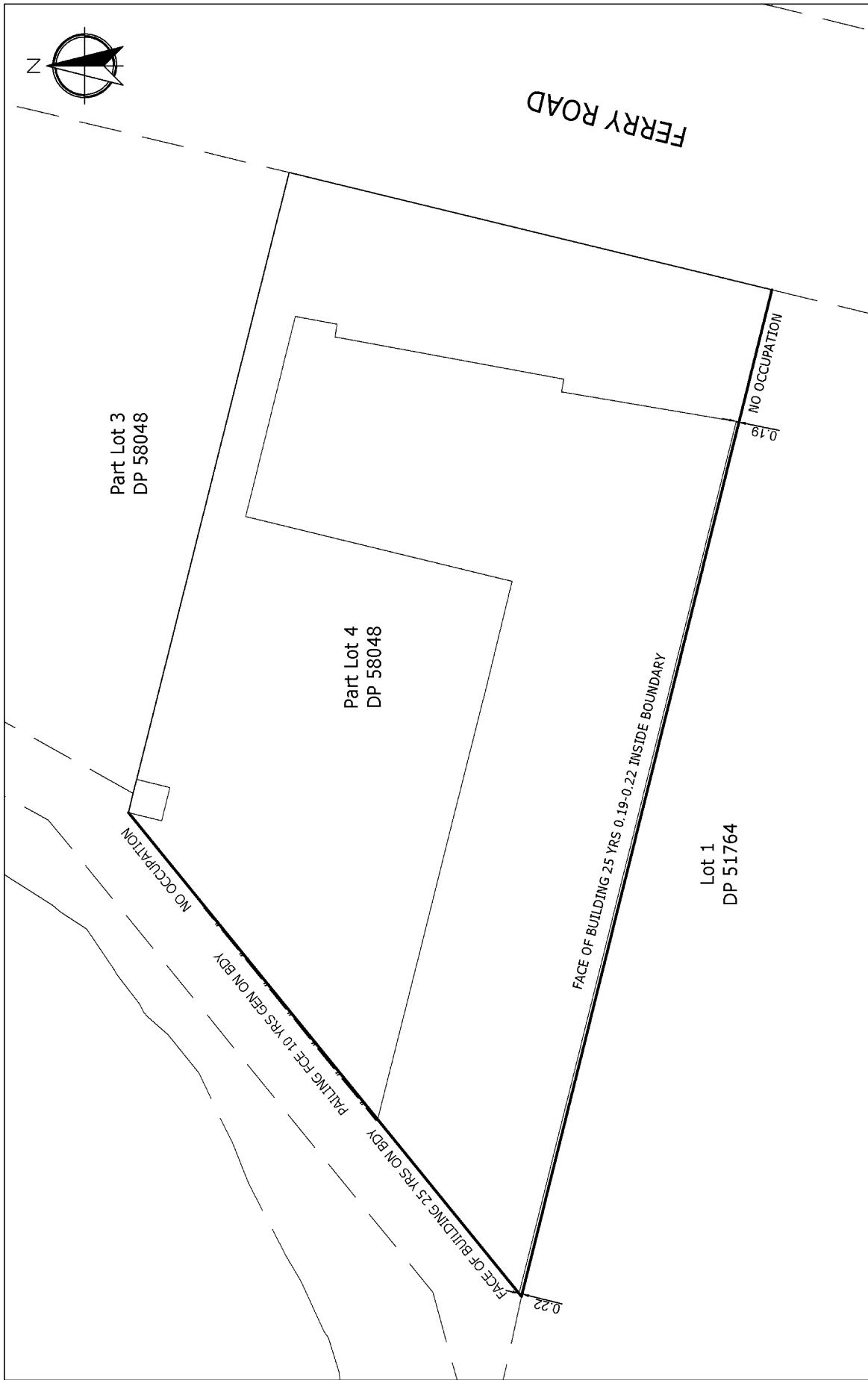
Land Registration District	Plan Number	Surveyor Ref
Canterbury	DP 64635	20057

Territorial Authority (the Council)		
Christchurch City Council		

SCHEDULE OF EXISTING EASEMENTS			
Purpose	Servient Tenement (Burdened Land)		Document
	Shown	Lot No	
RIGHT OF WAY AND RIGHT TO CONVEY ELECTRIC POWER IN GROSS	B, C DP 64265	Part Lot 4 DP 58048	T A78020.6
RIGHT TO CONVEY ELECTRIC POWER IN GROSS	E, F DP 64265		
RIGHT OF WAY, RIGHT TO DRAIN WATER AND SEWAGE, RIGHT TO CONVEY ELECTRIC POWER AND TELEPHONIC COMMUNICATIONS	B DP 64265		EC A78020.5
RIGHT OF WAY	B DP 58048		T 528000.3

SCHEDULE OF EXISTING APPERTENANT EASEMENTS			
Purpose	Servient Tenement (Burdened Land)		Document
	Shown	Lot No	
RIGHT OF WAY, RIGHT TO DRAIN WATER AND SEWAGE, TO CONVEY ELECTRIC POWER AND TELEPHONIC COMMUNICATIONS	A DP 64265	Part Lot 3 DP 58048	EC A78020.5

Occupation Diagram



LAND DISTRICT: CANTERBURY	OCCUPATION DIAGRAM		SCALE: 1:250	SHEET 1 OF 1 SHEETS
	TERRITORIAL AUTHORITY: CHRISTCHURCH CITY COUNCIL		SURVEYED BY: R CLARK	DP 64635
www.myall.co.nz			SURVEY DATE: 15.10.21	

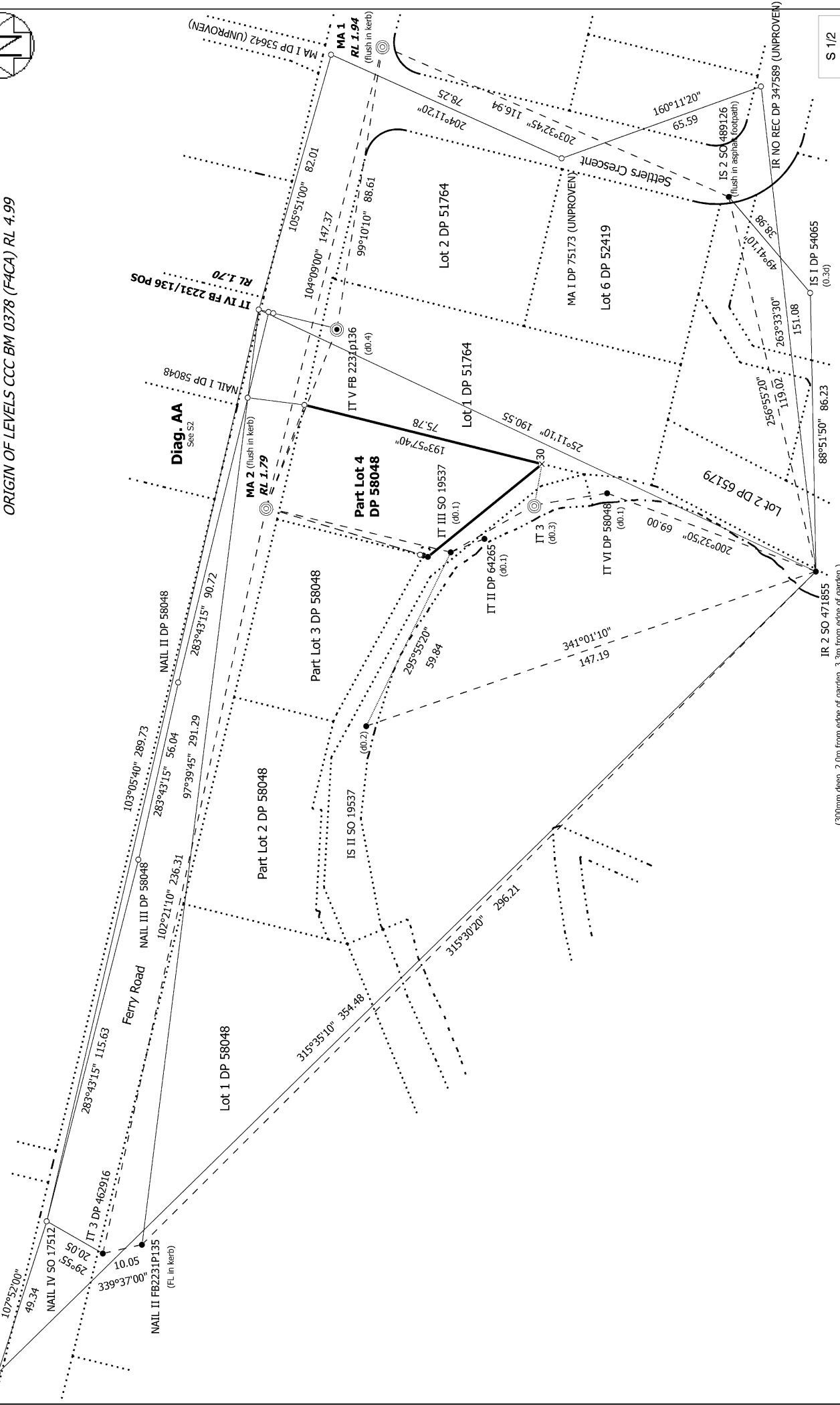
File: O:\PROJECTS\20057 - 1010 FERRY RD, FERRYHEAD\CAD\20057 OCC DIAG.DWG



LEVELS IN TERMS OF LYTTLETON VERTICAL DATUM 1937
ORIGIN OF LEVELS CCC BM 0378 (F4CA) RL 4.99

Diag. A

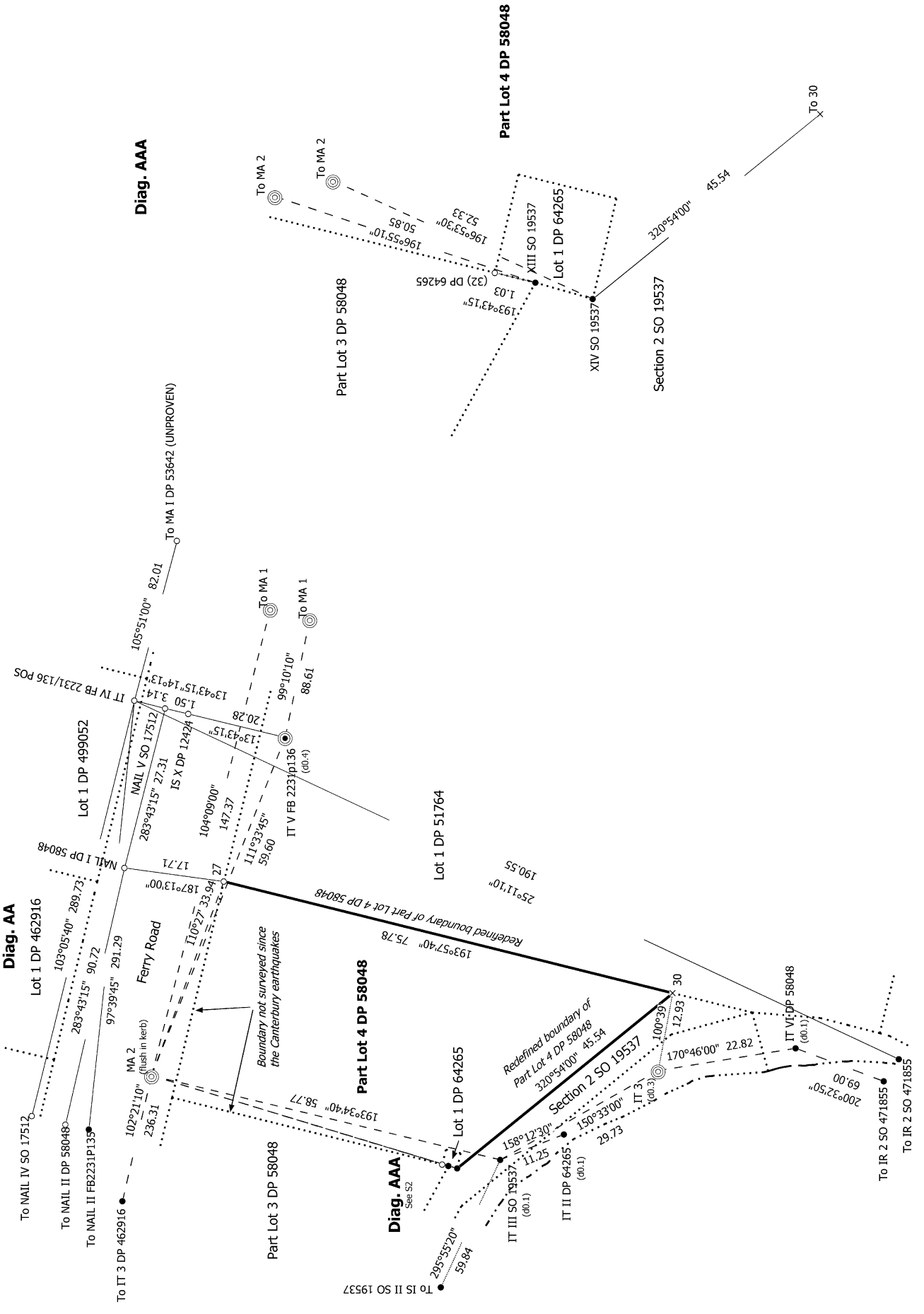
IR 4 SO 471855
(300mm deep, in grass berm, 3.5m from kerb, 3.7m from lamp post, 5.6m from MH, 9.5m from tree.)



S 1/2

IR 2 SO 471855
(300mm deep, 2.0m from edge of garden, 3.3m from edge of garden.)

<p>Land District: Canterbury Digitally Generated Plan Generated on: 31/05/2023 2:34pm Page 9 of 10</p>	<p>REDEVELOPMENT OF UNIT E AND AU E1 AND E2 AND PARTIAL REDEFINITION OF PART LOT 4 DP 58048</p>	<p>Surveyor: Rita Winifred Dobbie Clark Firm: Myall & Co Ltd Date of Survey: 15/10/2021</p>	<p>Record of Survey DP 64635 Deposited on: 9/05/2023</p>
---	--	---	--



Land District: Canterbury	REDEVELOPMENT OF UNIT E AND AU E1 AND E2 AND PARTIAL REDEFINITION OF PART LOT 4 DP 58048	Surveyor: Rita Winifred Dobbie Clark Firm: Myall & Co Ltd Date of Survey: 15/10/2021	Record of Survey DP 64635 Deposited on: 9/05/2023
Digitally Generated Plan Generated on: 31/05/2023 2:34pm Page 10 of 10			