

# Record of Survey - DP 597519

<b>Survey Number</b>	DP 597519
<b>Surveyor Reference</b>	22417-30 Hollyford Drive, Clover Park
<b>Surveyor</b>	Nicola Jane Harnett
<b>Survey Firm</b>	KW Consultants Limited
<b>Surveyor Declaration</b>	I Nicola Jane Harnett, being a licensed cadastral surveyor, certify that-- (a) this dataset provided by me and its related survey are accurate, correct and in accordance with the Cadastral Survey Act 2002 and Cadastral Survey Rules 2021; and (b) the survey was undertaken by me or under my personal direction. Declared on 18 Dec 2023 03:29 PM

## Survey Details

<b>Dataset Description</b>	Height-limited Lots 1 & 2 being a subdivision of Lot 65 DP 93806		
<b>Purpose</b>	LT Subdivision		
<b>Status</b>	Deposited	<b>Type</b>	Survey
<b>Land District</b>	North Auckland	<b>Survey Class</b>	Class A
<b>Meridional Circuit</b>	Mount Eden 2000	<b>Vertical Datum</b>	Auckland 1946

## Survey Dates

<b>Surveyed Date</b>	13/10/2023	<b>Certified Date</b>	18/12/2023
<b>Submitted Date</b>	18/12/2023 15:29:13	<b>Survey Approval Date</b>	19/12/2023
<b>Deposit Date</b>	14/12/2023		

## Referenced Surveys

Survey Number	Land District	Bearing Correction
DP 91688	North Auckland	0°00'00"
DP 93807	North Auckland	0°00'00"
DP 91687	North Auckland	0°00'00"
DP 91689	North Auckland	0°00'00"
DP 93806	North Auckland	0°00'00"
DP 582970	North Auckland	0°00'00"

## Territorial Authorities

Auckland Council

## Comprised In

RT NA50A/617

## Created Parcels

Parcels	Parcel Intent	Area	RT Reference
Height-Limited Lot 1 Deposited Plan 597519	Fee Simple Title	0.0422 Ha	1157311
Height-Limited Lot 2 Deposited Plan 597519	Fee Simple Title	0.0411 Ha	1157312
Area A Deposited Plan 597519	Easement		
Area B Deposited Plan 597519	Easement		
Area C Deposited Plan 597519	Easement		
Area D Deposited Plan 597519	Easement		



# Record of Survey - DP 597519

---

## Created Parcels

Parcels	Parcel Intent	Area	RT Reference
Height-Limited Area K Deposited Plan 597519	Easement		
Height-Limited Area J Deposited Plan 597519	Easement		
Height-Limited Area M Deposited Plan 597519	Easement		
Area F Deposited Plan 597519	Easement		
Height-Limited Area H Deposited Plan 597519	Easement		
Height-Limited Area I Deposited Plan 597519	Easement		
Height-Limited Area E Deposited Plan 597519	Easement		
Height-Limited Area N Deposited Plan 597519	Easement		
Height-Limited Area L Deposited Plan 597519	Easement		
<b>Total Area</b>		<hr/> 0.0833 Ha	

# Mark and Vector

Survey Number DP 597519

Meridional Circuit Mount Eden 2000

From	To	Code	Bearing	Adpt Surv	Bearing Correction	Distance	Adpt Surv	Class
LP XXVI DP 91688	PRM XXIII DP 91688	ob0	173°30'30" M			96.28 M		
PRM XXIII DP 91688	PRM III DP 93806	ob2	71°47'20" M			118.08 M		
PRM III DP 93806	ALP 300 DP 597519	ob3	343°10'00" M			75.85 M		
ALP 300 DP 597519	LP XXVI DP 91688	ob6	262°12'20" M			102.01 M		
ALP 300 DP 597519	IS 400 DP 597519	ob7	178°48'00" M			56.66 M		
IS 400 DP 597519	IS 500 DP 597519	ob8	178°48'00" M			11.70 M		
IS 500 DP 597519	PRM IV DP 93807	ob11	171°00'30" M			85.41 M		
PRM IV DP 93807	IT III DP 91687	ob10	237°34'30" A	DP 93807	0°00'00"	37.30 A	DP 93807	
IT III DP 91687	IS XXIV DP 91687	ob92	310°41'10" A	DP 91687	0°00'00"	39.77 A	DP 91687	
IS XXIV DP 91687	PRM XXIII DP 91688	ob93	310°41'10" A	DP 91687	0°00'00"	57.17 A	DP 91687	
PRM III DP 93806	LP II DP 93806	ob4	346°15'20" A	DP 93806	0°00'00"	65.37 A	DP 93806	
LP II DP 93806	PRM I DP 93806	ob13	346°15'20" A	DP 93806	0°00'00"	45.46 A	DP 93806	
PRM I DP 93806	IT XVI DP 75611	ob14	294°57'40" A	DP 93806	0°00'00"	79.60 A	DP 93806	
IT XVI DP 75611	LP XXVI DP 91688	ob15	196°34'00" A	DP 91689	0°00'00"	86.07 A	DP 91689	
LP XXVI DP 91688	PRM XXV DP 91688	ob1	149°25'50" A	DP 582970	0°00'00"	27.97 A	DP 582970	
PRM XXV DP 91688	PRM XXIII DP 91688	ob17	182°40'40" A	DP 582970	0°00'00"	71.68 A	DP 582970	
IT XVI DP 75611	IS X DP 93806	ob16	166°04'25" A	DP 93806	0°00'00"	116.56 A	DP 93806	
IS X DP 93806	IS XXIX DP 91688	ob19	166°04'25" A	DP 93806	0°00'00"	35.41 A	DP 93806	
IS XXIX DP 91688	IT III DP 91687	ob21	166°04'25" A	DP 93806	0°00'00"	96.70 A	DP 93806	
PRM XXV DP 91688	PEG 96 DP 91688	ob18	159°33'00" A	DP 91688	0°00'00"	25.98 A	DP 91688	
PEG 96 DP 91688	PEG (34) DP 93806	ob22	81°55'00" A	DP 91688	0°00'00"	35.55 A	DP 91688	
PEG (34) DP 93806	UNMK 48 DP 597519	ob23	76°17'30" A	DP 93806	0°00'00"	12.84 C		Class A
UNMK 48 DP 597519	PEG 40 DP 597519	ob25	76°17'30" A	DP 93806	0°00'00"	6.12 C		Class A
PEG 40 DP 597519	PEG 2 DP 93806	ob27	76°17'30" A	DP 93806	0°00'00"	19.53 C		Class A

# Mark and Vector

Survey Number DP 597519

Meridional Circuit Mount Eden 2000

From	To	Code	Bearing	Adpt Surv	Bearing Correction	Distance	Adpt Surv	Class
PEG 2 DP 93806	PRM III DP 93806	ob29	132°02'00"	A DP 93806	0°00'00"	36.53 A	DP 93806	
IS X DP 93806	PEG (33) DP 93806	ob20	39°16'00"	A DP 93806	0°00'00"	9.34 A	DP 93806	
PEG (33) DP 93806	PEG (34) DP 93806	ob31	180°00'00"	A DP 93806	0°00'00"	20.00 A	DP 93806	
PEG (34) DP 93806	PEG (35) DP 93806	ob24	173°07'10"	A DP 93806	0°00'00"	20.13 A	DP 93806	Class A
PEG (35) DP 93806	IS XXIX DP 91688	ob32	173°07'10"	A DP 91688	0°00'00"	1.63 A	DP 91688	
PEG (35) DP 93806	PEG 41 DP 597519	ob33	81°56'00"	A DP 93807	0°00'00"	19.23 C		Class A
PEG 41 DP 597519	UNMK 61 DP 597519	ob34	81°56'00"	A DP 93807	0°00'00"	9.05 C		Class A
UNMK 61 DP 597519	PEG 1 DP 93806	ob35	81°56'00"	A DP 93807	0°00'00"	8.38 C		Class A
PEG 1 DP 93806	PRM III DP 93806	ob36	91°06'00"	A DP 93806	0°00'00"	25.81 A	DP 93806	
PEG 40 DP 597519	UNMK 42 DP 597519	ob28	172°04'00"	C		5.13 C		Class A
UNMK 42 DP 597519	UNMK 43 DP 597519	ob37	172°04'00"	C		1.18 C		Class A
UNMK 43 DP 597519	UNMK 44 DP 597519	ob38	172°04'00"	C		2.12 C		Class A
UNMK 44 DP 597519	UNMK 45 DP 597519	ob40	172°04'00"	C		1.00 C		Class A
UNMK 45 DP 597519	UNMK 70 DP 597519	ob42	172°04'00"	C		1.85 C		Class A
UNMK 70 DP 597519	UNMK 46 DP 597519	ob45	172°04'00"	C		7.73 C		Class A
UNMK 46 DP 597519	UNMK 97 DP 597519	ob46	172°04'00"	C		0.46 C		Class A
UNMK 97 DP 597519	UNMK 57 DP 597519	ob88	172°04'00"	C		0.28 C		Class A
UNMK 57 DP 597519	UNMK 47 DP 597519	ob62	172°04'00"	C		0.26 C		Class A
UNMK 47 DP 597519	UNMK 56 DP 597519	ob48	172°04'00"	C		0.99 C		Class A
UNMK 56 DP 597519	PEG 41 DP 597519	ob61	172°04'00"	C		0.99 C		Class A
UNMK 48 DP 597519	UNMK 51 DP 597519	ob26	167°57'00"	C		1.21 C		Class A
UNMK 51 DP 597519	UNMK 52 DP 597519	ob50	167°57'00"	C		1.60 C		Class A
UNMK 52 DP 597519	UNMK 50 DP 597519	ob51	167°57'00"	C		2.30 C		Class A
UNMK 50 DP 597519	UNMK 42 DP 597519	ob52	76°17'00"	C		5.75 C		Class A

# Mark and Vector

Survey Number DP 597519

Meridional Circuit Mount Eden 2000

From	To	Code	Bearing	Adpt Surv	Bearing Correction	Distance	Adpt Surv	Class
PEG 2 DP 93806	UNMK 49 DP 597519	ob30	176°51'00"	A DP 93806	0°00'00"	5.19 C		Class A
UNMK 49 DP 597519	UNMK 65 DP 597519	ob53	176°51'00"	A DP 93806	0°00'00"	17.75 C		Class A
UNMK 65 DP 597519	PEG 1 DP 93806	ob54	176°51'00"	A DP 93806	0°00'00"	1.06 C		Class A
UNMK 43 DP 597519	UNMK 53 DP 597519	ob39	56°11'00"	C		3.42 C		Class A
UNMK 53 DP 597519	UNMK 49 DP 597519	ob55	76°17'00"	C		16.00 C		Class A
UNMK 45 DP 597519	UNMK 54 DP 597519	ob43	82°04'00"	C		0.30 C		Class A
UNMK 54 DP 597519	UNMK 55 DP 597519	ob56	172°04'00"	C		2.18 C		Class A
UNMK 55 DP 597519	UNMK 58 DP 597519	ob60	172°04'00"	C		7.40 C		Class A
UNMK 58 DP 597519	UNMK 59 DP 597519	ob57	172°04'00"	C		0.74 C		Class A
UNMK 59 DP 597519	UNMK 57 DP 597519	ob63	262°04'00"	C		0.30 C		Class A
UNMK 44 DP 597519	UNMK 60 DP 597519	ob41	82°04'00"	C		2.00 C		Class A
UNMK 60 DP 597519	UNMK 62 DP 597519	ob64	172°04'00"	C		3.18 C		Class A
UNMK 62 DP 597519	UNMK 55 DP 597519	ob65	262°04'00"	C		1.70 C		Class A
UNMK 45 DP 597519	UNMK 64 DP 597519	ob44	262°04'00"	C		0.30 C		Class A
UNMK 64 DP 597519	UNMK 66 DP 597519	ob59	172°04'00"	C		0.45 C		Class A
UNMK 66 DP 597519	UNMK 67 DP 597519	ob66	172°04'00"	C		1.20 C		Class A
UNMK 67 DP 597519	UNMK 68 DP 597519	ob68	172°04'00"	C		8.39 C		Class A
UNMK 68 DP 597519	UNMK 69 DP 597519	ob70	172°04'00"	C		0.28 C		Class A
UNMK 69 DP 597519	UNMK 57 DP 597519	ob72	82°04'00"	C		0.30 C		Class A
UNMK 66 DP 597519	UNMK 71 DP 597519	ob67	296°03'00"	C		5.22 C		Class A
UNMK 71 DP 597519	UNMK 72 DP 597519	ob73	261°54'00"	C		3.72 C		Class A
UNMK 72 DP 597519	UNMK 73 DP 597519	ob74	261°54'00"	C		1.22 C		Class A
UNMK 73 DP 597519	UNMK 74 DP 597519	ob76	261°54'00"	C		1.47 C		Class A
UNMK 74 DP 597519	UNMK 75 DP 597519	ob78	171°54'00"	C		1.00 C		Class A

# Mark and Vector

Survey Number DP 597519

Meridional Circuit Mount Eden 2000

From	To	Code	Bearing	Adpt Surv	Bearing Correction	Distance	Adpt Surv	Class
UNMK 75 DP 597519	UNMK 76 DP 597519	ob80	81°54'00"	C		6.11 C		Class A
UNMK 76 DP 597519	UNMK 67 DP 597519	ob82	116°03'00"	C		5.58 C		Class A
UNMK 73 DP 597519	UNMK 51 DP 597519	ob77	26°46'00"	C		6.27 C		Class A
UNMK 72 DP 597519	UNMK 52 DP 597519	ob75	26°46'00"	C		4.32 C		Class A
UNMK 75 DP 597519	UNMK 77 DP 597519	ob81	261°54'00"	C		4.00 C		Class A
UNMK 77 DP 597519	UNMK 78 DP 597519	ob83	173°07'00"	C		11.51 C		Class A
UNMK 78 DP 597519	UNMK 68 DP 597519	ob84	81°56'00"	C		14.95 C		Class A
UNMK 74 DP 597519	UNMK 79 DP 597519	ob79	351°54'00"	C		0.84 C		Class A
UNMK 79 DP 597519	UNMK 80 DP 597519	ob85	263°06'00"	C		5.99 C		Class A
UNMK 80 DP 597519	UNMK 81 DP 597519	ob86	173°07'00"	C		15.00 C		Class A
UNMK 81 DP 597519	UNMK 56 DP 597519	ob87	81°56'00"	C		17.31 C		Class A
UNMK 68 DP 597519	UNMK 97 DP 597519	ob71	81°56'00"	C		0.30 C		Class A
UNMK 58 DP 597519	UNMK 98 DP 597519	ob58	82°04'00"	C		10.24 C		Class A
UNMK 98 DP 597519	UNMK 99 DP 597519	ob89	172°04'00"	C		1.89 C		Class A
UNMK 99 DP 597519	UNMK 65 DP 597519	ob90	82°04'00"	C		6.98 C		Class A
UNMK 47 DP 597519	UNMK 100 DP 597519	ob49	82°04'00"	C		9.05 C		Class A
UNMK 100 DP 597519	UNMK 61 DP 597519	ob91	172°04'00"	C		1.96 C		Class A
UNMK 46 DP 597519	UNMK 58 DP 597519	ob47	82°04'00"	C		0.30 C		Class A
IS 400 DP 597519	PEG 40 DP 597519	ob9	278°42'00"	M		25.63 M		
IS 500 DP 597519	PEG 41 DP 597519	ob12	254°39'00"	M		23.38 M		
PRM III DP 93806	PRM IV DP 93807	ob5	185°05'55"	A	DP 93807	0°00'00"	80.44 A	DP 93807
UNMK 67 DP 597519	UNMK 70 DP 597519	ob69	116°03'00"	C		0.36 C		Class A

Mark Name	Mark Condition	Description
ALP 300 DP 597519		In Vehicle Crossing



# Mark and Vector

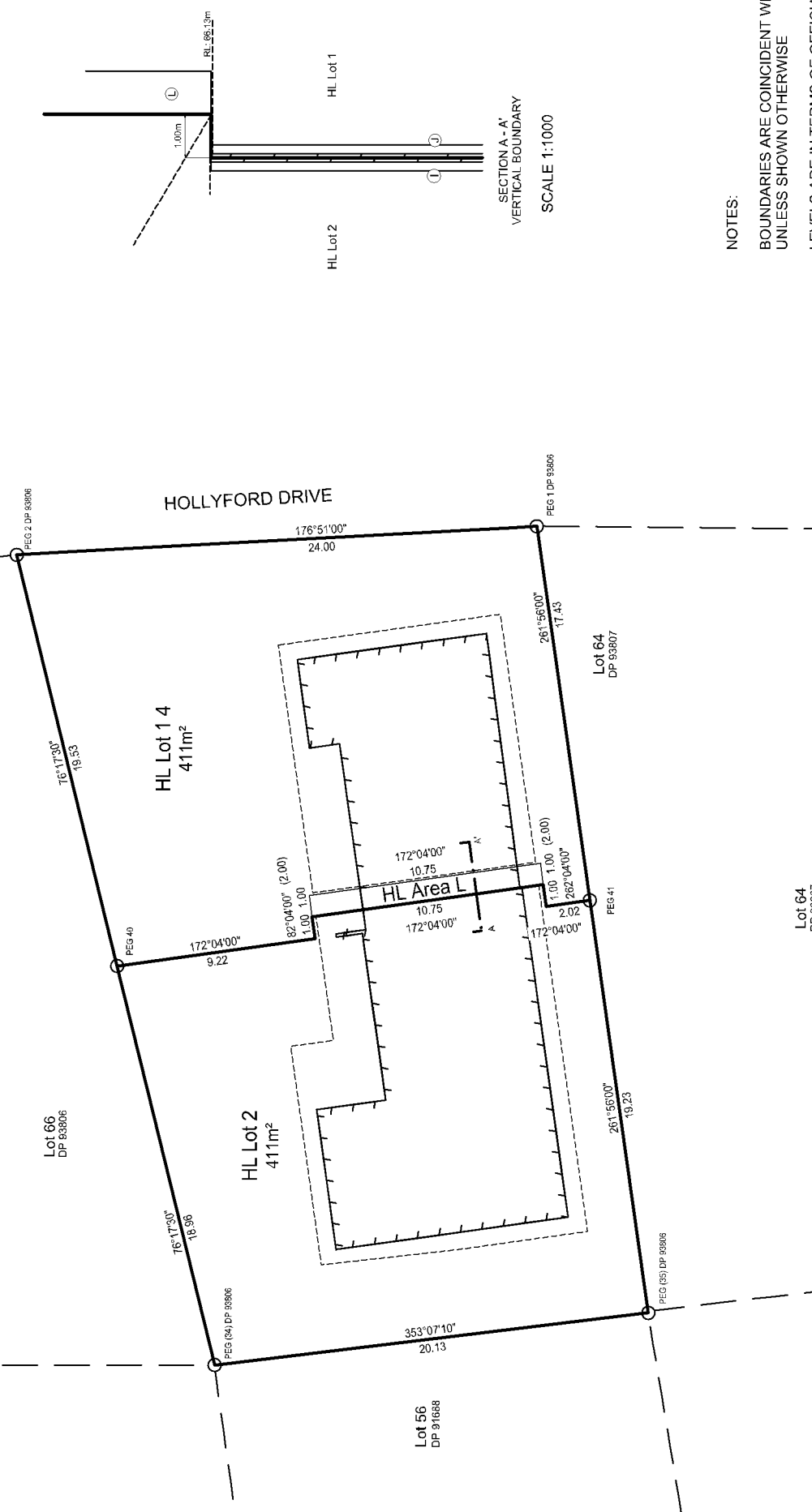
Survey Number DP 597519  
Meridional Circuit Mount Eden 2000

Mark Name	Mark Condition	Description
LP XXVI DP 91688		In concrete channel
PRM III DP 93806		Plaque in channel
LP II DP 93806	Searched For and Not Found	
PRM I DP 93806	Searched For and Not Found	

\*\*\* End of Report \*\*\*



MEMORANDUM OF EASEMENTS (HEIGHT-LIMITED NON-PRIMARY PARCELS)				
PURPOSE	SHOWN	BURDENED LAND	BENEFITED LAND	HEIGHT LIMIT
RIGHT TO CONVEY ELECTRICITY	HL E, HL K	HL LOT 1	HL LOT 2	
PARTY WALL	HL E, HL J	HL LOT 1	HL LOT 2	
MAINTENANCE	HL H, HL I, HL N	HL LOT 2	HL LOT 1	UPPER: RL 96.13
RIGHT TO DRAIN WATER	HL M	HL LOT 1	HL LOT 2	
MAINTENANCE	HL M	HL LOT 1	HL LOT 2	
	HL L	HL LOT 1	HL LOT 2	LOWER: RL 96.13



NOTES:  
 BOUNDARIES ARE COINCIDENT WITH TITLE PLAN SHEETS UNLESS SHOWN OTHERWISE  
 LEVELS ARE IN TERMS OF OFFICIAL VERTICAL DATUM: AUCKLAND VERTICAL DATUM 1946 DERIVED FROM NZVD 2016  
 VERTICAL CONTROL MARK: LP XXVI DP 91688 (CNMW)  
 RL: 55.56m  
 SOURCE: LINZ GEODETIC DATABASE, DATE: 18/08/2023

**KWC**  
 kwc@kwc.co.nz  
 www.kwc.co.nz

Plot File: c:\26\lab\ESKTOP\450\450\10251333\Hollyford Drive-Clover Park\_31158103\_Surveying\2517\_103\KING\_103model\_PLOTTED\_Mon Dec 18 12:41:27 2023

---

**30 HOLLYFORD DRIVE  
 CLOVER PARK**

Legal Description:  
 DP 597519

Job Number:  
 22417

Drawn / Surveyed: LW  
 Checked: NH

Revised: 0      Date: 18/12/2023  
 #      Description:      Date:

Sheet: Scale @ A3:  
 1 of 1      1:200

---

Address:  
 30 HOLLYFORD DRIVE  
 CLOVER PARK

Drawing Name:  
 VERTICAL BOUNDARY

---

Lot 66  
 DP 93806

Lot 64  
 DP 93807



# Schedule / Memorandum

Land Registration District

**North Auckland**

Survey Number

**LT 597519**

Territorial Authority (the Council)

**Auckland Council**

## Memorandum of Easements

Last Edited: 18 Oct 2023 15:12:01

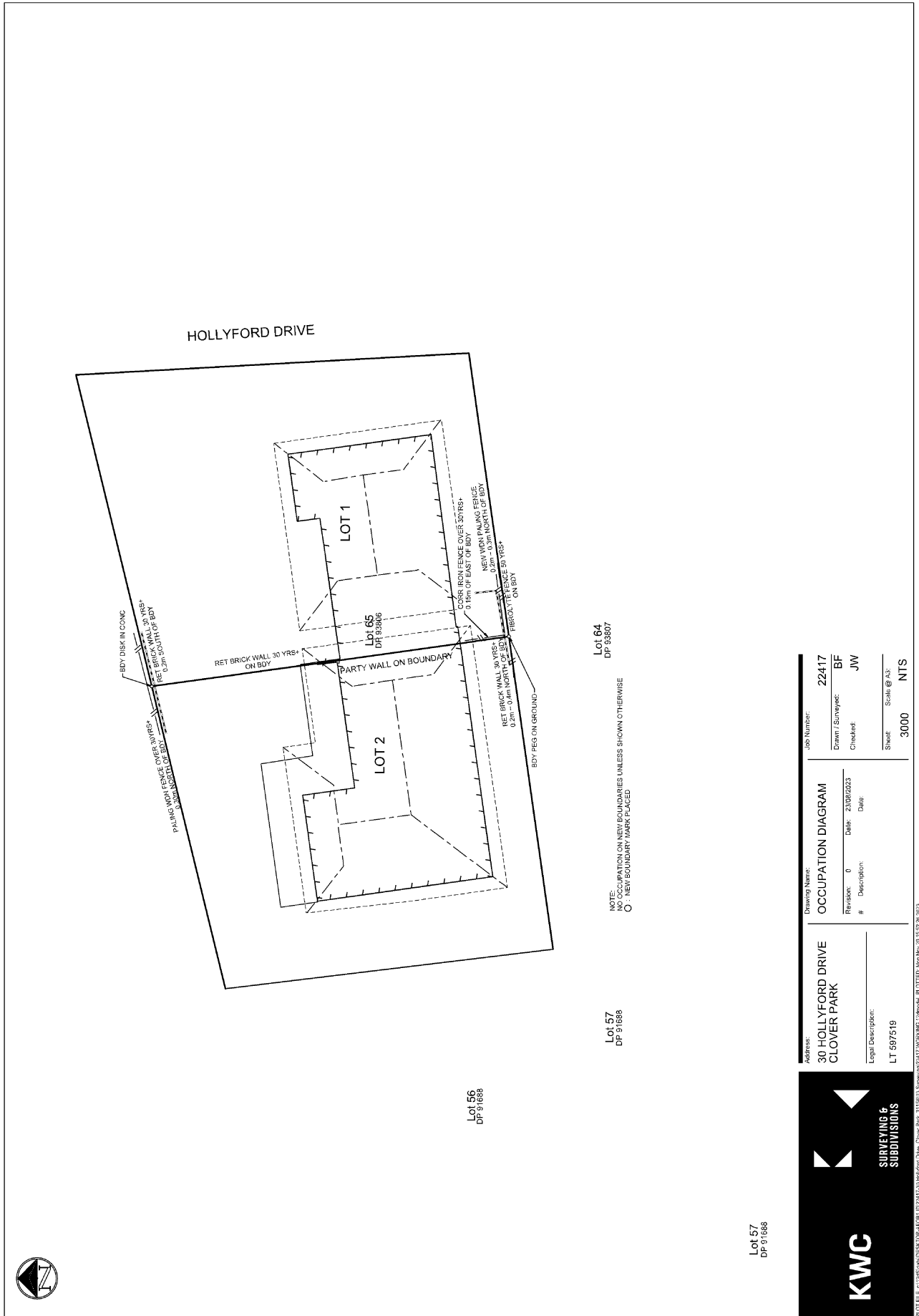
Purpose	Shown	Burdened Land (Servient Tenement)	Benefited Land (Dominant Tenement)	Height Limits	
				Lower	Upper
Right of way	A	HL Lot 1	HL Lot 2		
	B	HL Lot 2	HL Lot 1		
Right to convey water, Right to convey telecommunications, Right to convey gas	A	HL Lot 1	HL Lot 2		
Right to convey electricity	HL E, HL K	HL Lot 1	HL Lot 2		RL 66.13
Party wall, Maintenance	HL E, HL J	HL Lot 1	HL Lot 2		RL 66.13
	HL H, HL I, HL N	HL Lot 2	HL Lot 1		RL 66.13
Right to drain water	B, C, D, F, HL H	HL Lot 2	HL Lot 1		
	HL M	HL Lot 1	HL Lot 2		RL 66.13
Right to drain sewage	F	HL Lot 2	HL Lot 1		
Maintenance	HL M	HL Lot 1	HL Lot 2		RL 66.13
	HL L	HL Lot 1	HL Lot 2	RL 66.13	

## Schedule of Easements in Gross

Last Edited: 13 Oct 2023 12:38:12

Purpose	Shown	Burdened Land (Servient Tenement)	Grantee
Right to convey telecommunications	A	HL Lot 1	Chorus New Zealand Limited

# Occupation Diagram



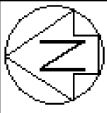
Lot 57  
DP 91688

Lot 64  
DP 93807

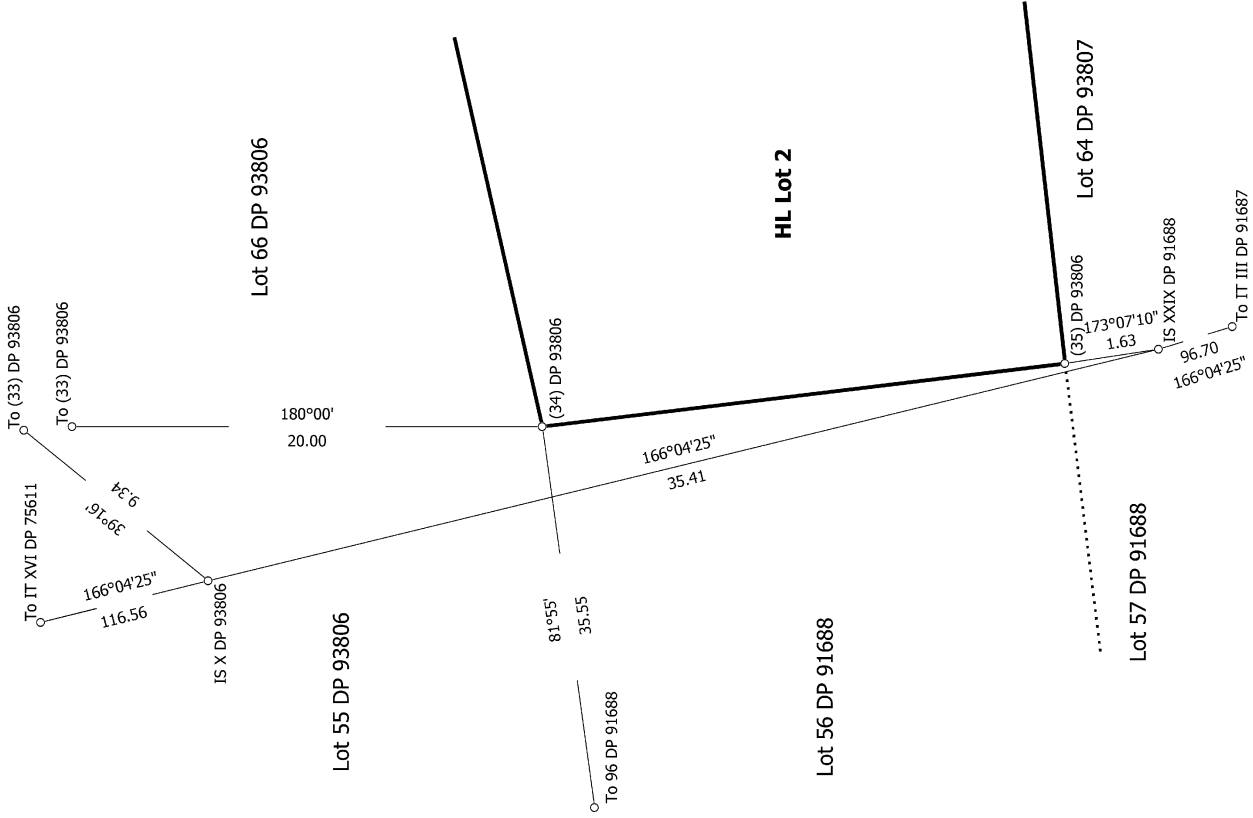
NOTE:  
NO OCCUPATION ON NEW BOUNDARIES UNLESS SHOWN OTHERWISE  
O - NEW BOUNDARY MARK PLACED

Drawing Name: <b>OCCUPATION DIAGRAM</b>		Job Number: <b>22417</b>
Revision: 0 # Description:	Date: 23/08/2023 Date:	Drawn / Surveyed: BF Checked: JW
Address: <b>30 HOLLYFORD DRIVE CLOVER PARK</b>		Sheet: 3000 Scale: @ A3 NTS
Legal Description: <b>LT 597519</b>		

FILE: C:\2025\INDUSTRIAL\4051\4051\2024\16\16\01\2024\1.07\PM\LOT 57\LOT 57\160223\Survey\Occupation Diagram.dwg; User: P:\160223\Survey\g2417\PROJNAME: 160223; PLOTED: Mon Mar 20 15:52:30 2023



**Diag. AA**

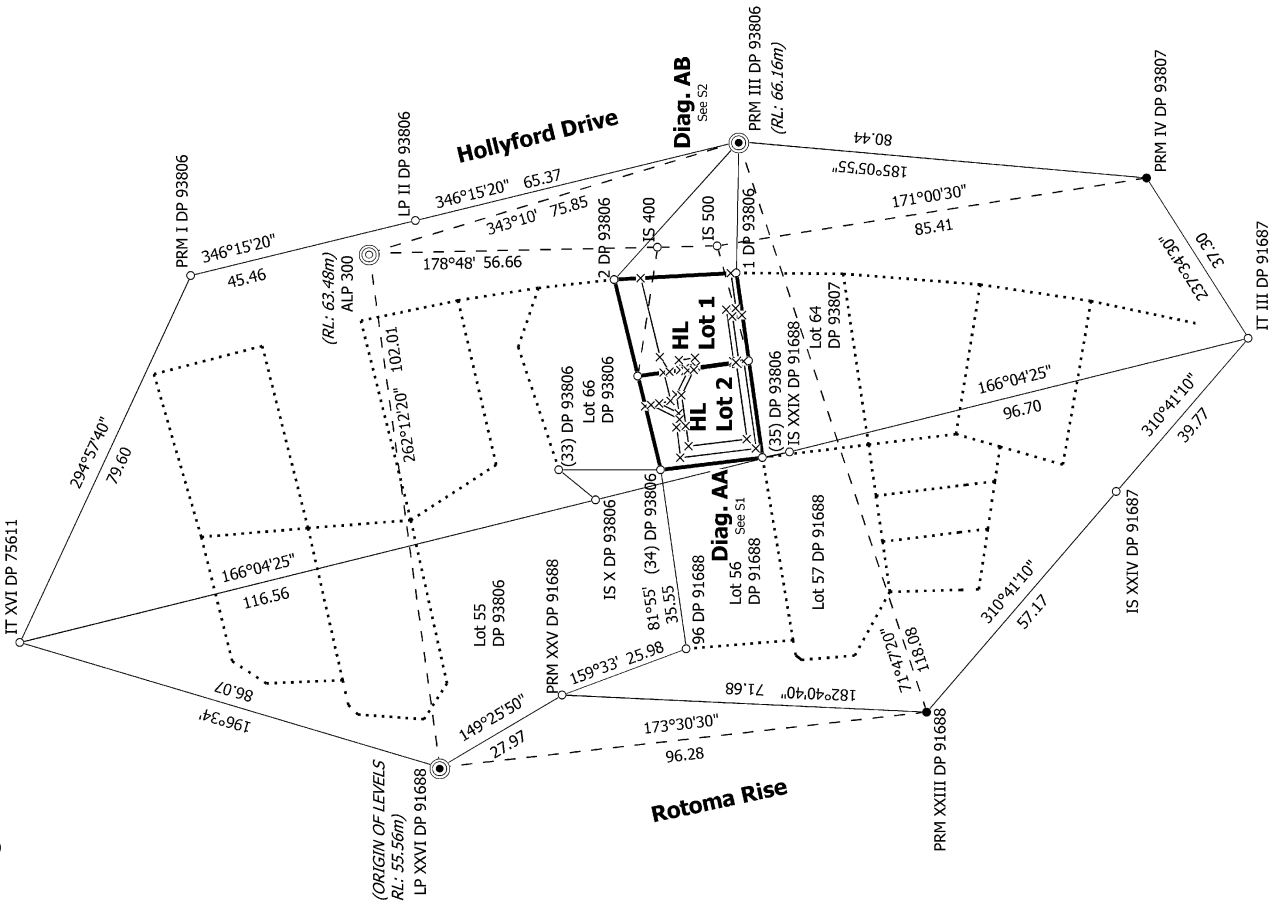


S 1/2

Record of Survey  
DP 597519  
Deposited on: 14/12/2023

Surveyor: Nicola Jane Harnett  
Firm: KW Consultants Limited  
Date of Survey: 13/10/2023

**Diag. A**

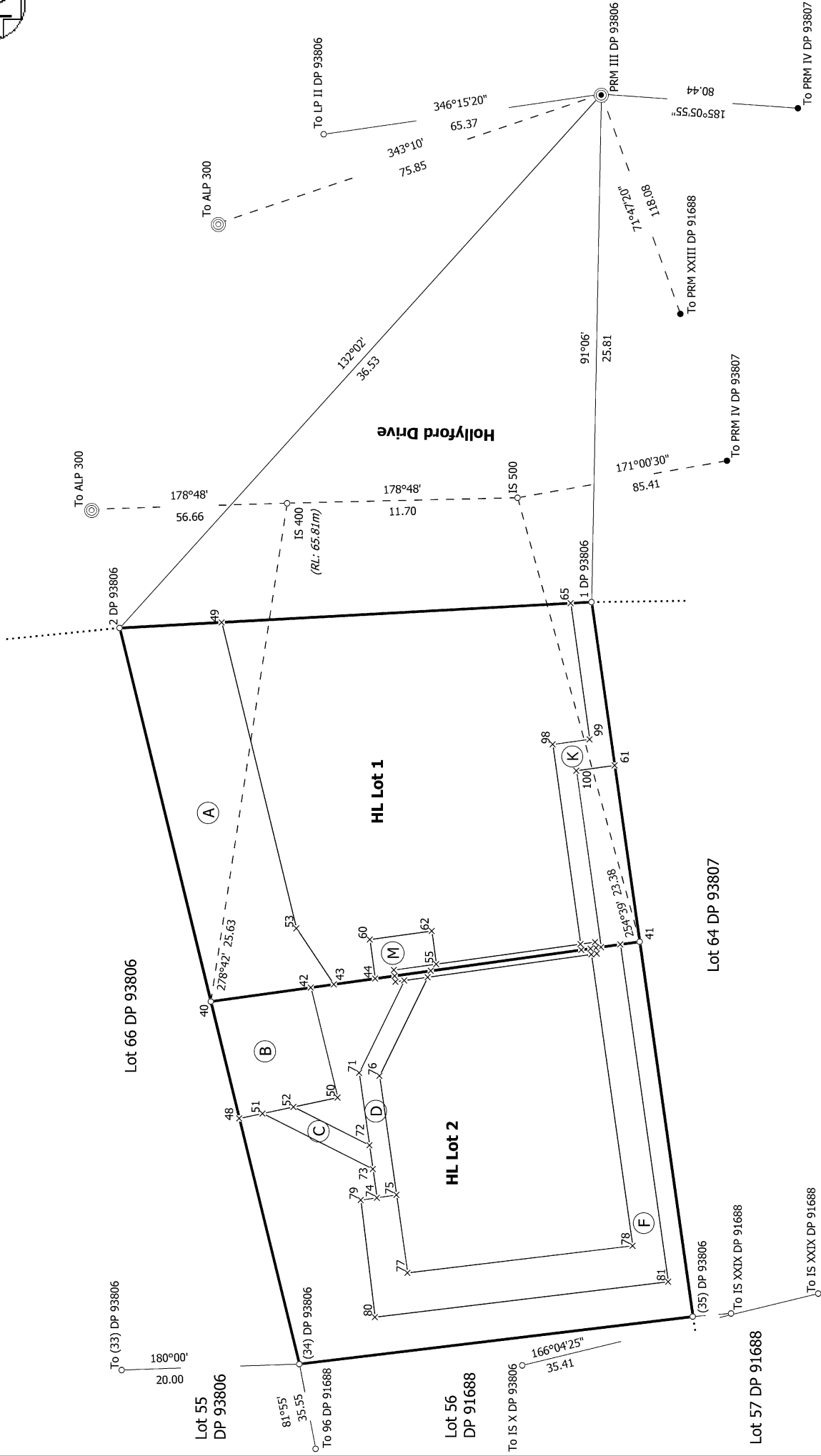


**Height-limited Lots 1 & 2 being a subdivision of Lot 65 DP 93806**

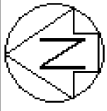
Land District: North Auckland

**Digitally Generated Plan**  
Generated on: 16/07/2024 1:07pm Page 11 of 14

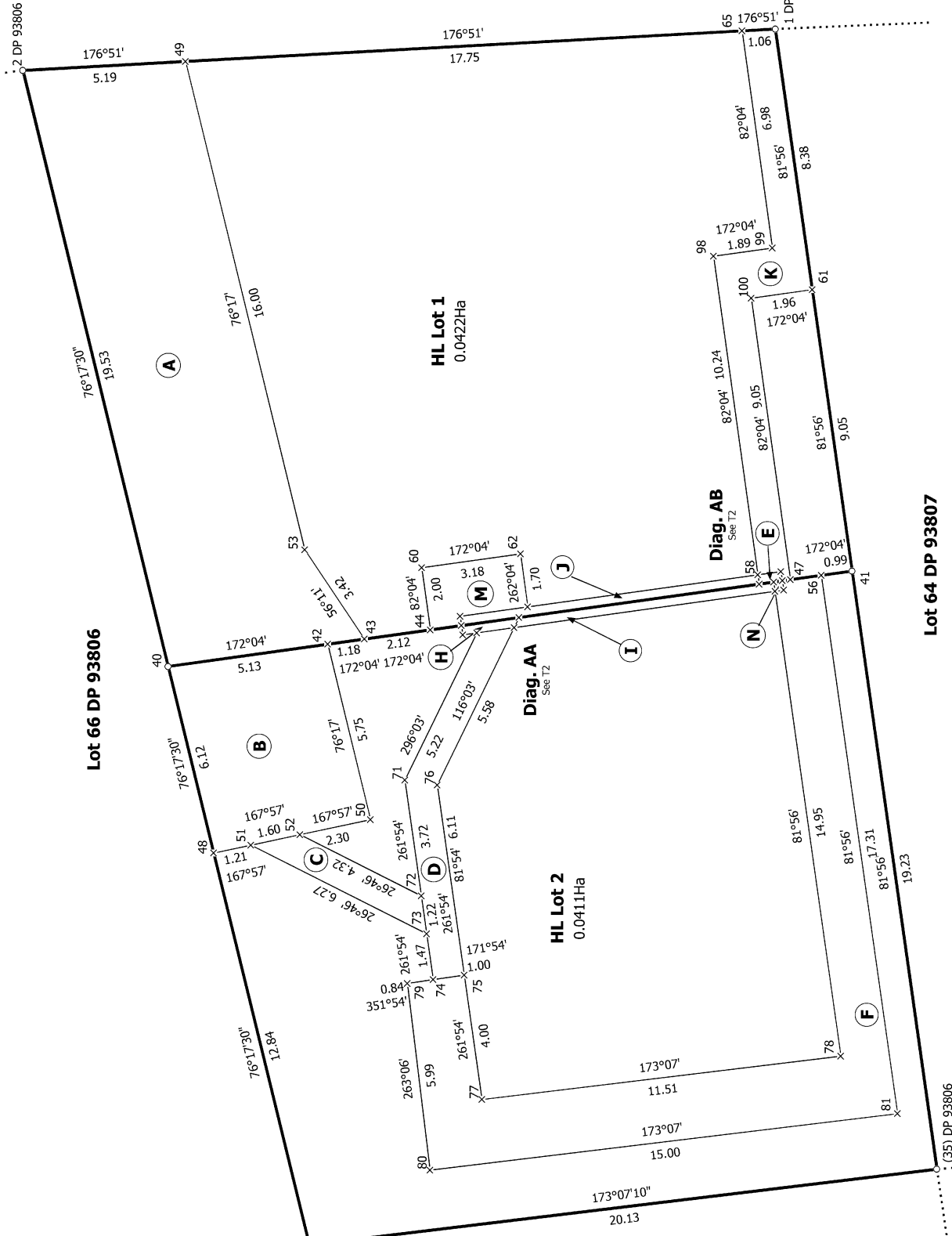
Diag. AB



Diag. A



HOLLYFORD DRIVE



Lot 66 DP 93806

Lot 55 DP 93806

HL Lot 1  
0.04422Ha

HL Lot 2  
0.04111Ha

Lot 56 DP 91688

Diag. AB  
See T2

Diag. AA  
See T2

Lot 64 DP 93807

Lot 57 DP 91688

(34) DP 93806

(35) DP 93806

Land District: North Auckland

Digitally Generated Plan

Generated on: 16/01/2024 1:07pm Page 13 of 14

Height-limited Lots 1 & 2 being a subdivision of Lot 65 DP 93806

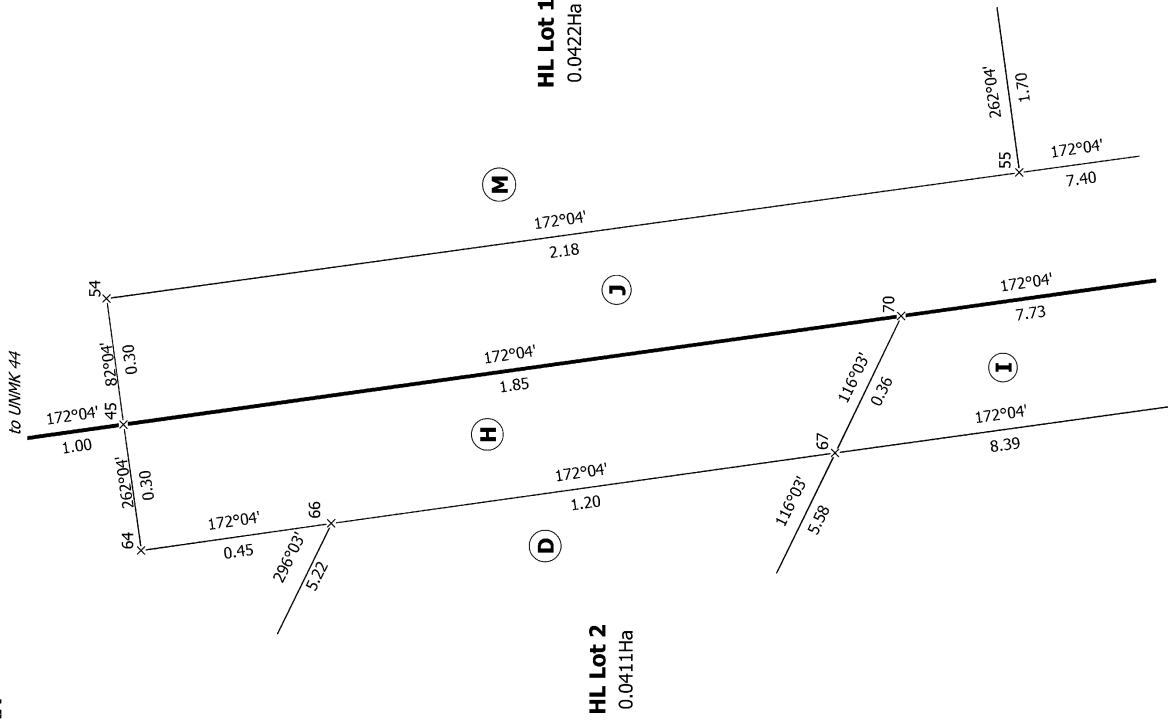
Surveyor: Nicola Jane Harnett  
Firm: KW Consultants Limited  
Date of Survey: 13/10/2023

Record of Survey  
DP 597519

Deposited on: 14/12/2023

T 1/2

Diag. AA



Diag. AB

