

Record of Survey - DP 597267

Survey Number	DP 597267
Surveyor Reference	210871 Hartley
Surveyor	Kathryn Cecelia Barrett
Survey Firm	BTW Company (New Plymouth)
Surveyor Declaration	I Kathryn Cecelia Barrett, being a licensed cadastral surveyor, certify that-- (a) this dataset provided by me and its related survey are accurate, correct and in accordance with the Cadastral Survey Act 2002 and Cadastral Survey Rules 2021; and (b) the survey was undertaken by me or under my personal direction. Declared on 01 Mar 2024 02:48 PM

Survey Details

Dataset Description	Lots 1 and 2 being a Subdivision of Lot 1 DP 479941		
Purpose	LT Subdivision		
Status	Deposited	Type	Survey
Land District	Taranaki	Survey Class	Class B
Meridional Circuit	Taranaki 2000	Vertical Datum	None

Survey Dates

Surveyed Date	09/10/2023	Certified Date	01/03/2024
Submitted Date	01/03/2024 14:48:33	Survey Approval Date	04/03/2024
Deposit Date	05/03/2024		

Referenced Surveys

Survey Number	Land District	Bearing Correction
DP 16456	Taranaki	0°00'00"
SO 9178	Taranaki	0°00'00"
SO 11172	Taranaki	0°00'00"
SO 5508	Taranaki	0°00'00"
DP 20397	Taranaki	0°00'00"
DP 328368	Taranaki	0°00'00"
DP 450111	Taranaki	0°00'00"
DP 479941	Taranaki	0°00'00"
SO 493764	Taranaki	0°00'00"

Territorial Authorities

New Plymouth District

Comprised In

RT 669855

Created Parcels

Parcels	Parcel Intent	Area	RT Reference
Lot 1 Deposited Plan 597267	Fee Simple Title	1.1127 Ha	1156600
Lot 2 Deposited Plan 597267	Fee Simple Title	9.8282 Ha	1156601
Area A Deposited Plan 597267	Easement		



Record of Survey - DP 597267

Created Parcels

Parcels	Parcel Intent	Area	RT Reference
Esplanade Strip B Deposited Plan 597267	Esplanade Strip		
Total Area		<hr/> 10.9409 Ha	

Mark and Vector

Survey Number DP 597267
 Meridional Circuit Taranaki 2000

From	To	Code	Bearing	Adpt Surv	Bearing Correction	Distance	Adpt Surv	Class
RS 29 SO 11172	RS 28 SO 11172	ob0	329°31'51" M			546.98 M		
RS 28 SO 11172	NAIL I DP 479941	ob1	334°18'05" M			354.36 M		
NAIL I DP 479941	RS 27 SO 11172	ob9	323°10'30" A	DP 479941	0°00'00"	33.32 A	DP 479941	
RS 27 SO 11172	RS 26 SO 11173	ob11	340°32'28" A	DP 20397	0°00'00"	273.68 A	DP 20397	
RS 26 SO 11173	IS II DP 11962	ob13	351°18'30" A	SO 493764	0°00'00"	466.11 A	SO 493764	
IS II DP 11962	RS 25 SO 11173	ob14	188°34'30" A	DP 328368	0°00'00"	109.83 A	DP 328368	
RS 28 SO 11172	PEG DP 16456	ob2	302°19'00" A	DP 16456	0°00'00"	31.56 A	DP 16456	
RS 28 SO 11172	IB DP 16456	ob3	323°07'10" M			155.98 M		
RS 28 SO 11172	POST B DP 479941	ob4	325°45'30" M			196.52 M		
POST B DP 479941	NAIL I DP 479941	ob15	344°38'00" A	DP 479941	0°00'00"	162.67 A	DP 479941	
NAIL I DP 479941	PEG SO 9178	ob10	190°24'00" A	DP 479941	0°00'00"	27.80 A	DP 479941	
PEG DP 16456	UNMK DP 450111	ob17	328°11'20" A	DP 16456	0°00'00"	7.14 A	DP 450111	Class B
UNMK DP 450111	IB DP 16456	ob19	328°11'20" A	DP 16456	0°00'00"	119.83 A	DP 450111	Class B
IB DP 16456	PEG A DP 597267	ob67	335°44'30" A	DP 479941	0°00'00"	9.69 C		Class B
PEG A DP 597267	POST B DP 479941	ob68	335°44'30" A	DP 479941	0°00'00"	31.66 C		Class B
POST B DP 479941	PEG A DP 479941	ob16	340°44'30" A	DP 479941	0°00'00"	119.70 A	DP 479941	Class B
PEG A DP 479941	PEG SO 9178	ob21	332°22'00" A	SO 5508	0°00'00"	18.64 A	DP 479941	Class B
RS 27 SO 11172	IT X SO 9178	ob12	164°24'40" A	SO 11172	0°00'00"	46.45 A	SO 11172	
IT X SO 9178	PEG SO 9178	ob23	165°04'00" A	SO 9178	0°00'00"	9.60 A	SO 9178	
RS 28 SO 11172	IT I DP 450111	ob5	196°58'10" M			290.57 M		
IT I DP 450111	IT II DP 450111	ob24	134°01'00" A	DP 450111	0°00'00"	136.22 A	DP 450111	
IT II DP 450111	RS 28 SO 11172	ob26	357°58'35" A	DP 450111	0°00'00"	372.80 A	DP 450111	
IT I DP 450111	POST Z DP 450111	ob25	308°29'00" A	DP 450111	0°00'00"	74.43 A	DP 450111	
IT II DP 450111	POST N DP 450111	ob27	46°07'00" A	DP 450111	0°00'00"	6.22 A	DP 450111	
PEG DP 16456	PEG DP 16456	ob18	249°24'00" A	DP 16456	0°00'00"	12.64 A	DP 16456	Class B
PEG DP 16456	PEG DP 16456	ob50	218°38'00" A	DP 16456	0°00'00"	21.87 A	DP 16456	Class B
PEG DP 16456	UNMK DP 450111	ob51	220°58'40" A	DP 450111	0°00'00"	10.00 A	DP 450111	Class B
UNMK DP 450111	PEG B DP 450111	ob52	220°58'40" A	DP 450111	0°00'00"	32.49 A	DP 450111	Class B
PEG B DP 450111	UNMK DP 450111	ob53	191°58'00" A	DP 450111	0°00'00"	16.69 A	DP 450111	Class B

Mark and Vector

Survey Number DP 597267

Meridional Circuit Taranaki 2000

From	To	Code	Bearing	Adpt Surv	Bearing Correction	Distance	Adpt Surv	Class
UNMK DP 450111	UNMK DP 450111	ob54	191°58'00"	A DP 450111	0°00'00"	2.41 A	DP 450111	Class B
UNMK DP 450111	PEG C DP 450111	ob55	191°58'00"	A DP 450111	0°00'00"	5.90 A	DP 450111	Class B
PEG C DP 450111	PEG D DP 450111	ob56	177°24'00"	A DP 450111	0°00'00"	33.64 A	DP 450111	Class B
PEG D DP 450111	PEG E DP 450111	ob57	202°48'00"	A DP 450111	0°00'00"	66.72 A	DP 450111	Class B
PEG E DP 450111	PEG F DP 450111	ob58	208°37'00"	A DP 450111	0°00'00"	28.44 A	DP 450111	Class B
PEG F DP 450111	POST S DP 450111	ob59	122°57'00"	A DP 450111	0°00'00"	13.23 A	DP 450111	Class B
POST S DP 450111	POST T DP 450111	ob60	228°57'00"	A DP 450111	0°00'00"	10.04 A	DP 450111	Class B
POST T DP 450111	POST U DP 450111	ob61	215°22'00"	A DP 450111	0°00'00"	11.18 A	DP 450111	Class B
POST U DP 450111	POST V DP 450111	ob62	229°29'00"	A DP 450111	0°00'00"	10.09 A	DP 450111	Class B
POST V DP 450111	POST W DP 450111	ob63	240°54'00"	A DP 450111	0°00'00"	6.41 A	DP 450111	Class B
POST W DP 450111	POST X DP 450111	ob64	223°45'00"	A DP 450111	0°00'00"	7.60 A	DP 450111	Class B
POST X DP 450111	POST Y DP 450111	ob65	190°25'00"	A DP 450111	0°00'00"	9.13 A	DP 450111	Class B
POST Y DP 450111	POST Z DP 450111	ob66	135°40'00"	A DP 450111	0°00'00"	4.59 A	DP 450111	Class B
POST Z DP 450111	POST G DP 450111	ob28	106°33'00"	A DP 450111	0°00'00"	34.18 A	DP 450111	Class B
POST G DP 450111	POST H DP 450111	ob32	121°37'00"	A DP 450111	0°00'00"	6.29 A	DP 450111	Class B
POST H DP 450111	POST I DP 450111	ob33	132°48'00"	A DP 450111	0°00'00"	15.29 A	DP 450111	Class B
POST I DP 450111	POST J DP 450111	ob34	148°59'00"	A DP 450111	0°00'00"	24.82 A	DP 450111	Class B
POST J DP 450111	PEG K DP 450111	ob35	119°37'30"	A DP 450111	0°00'00"	53.36 A	DP 450111	Class B
PEG K DP 450111	POST L DP 450111	ob29	139°34'00"	A DP 450111	0°00'00"	43.27 A	DP 450111	Class B
POST L DP 450111	POST M DP 450111	ob30	146°52'00"	A DP 450111	0°00'00"	36.05 A	DP 450111	Class B
POST M DP 450111	POST N DP 450111	ob36	118°57'00"	A DP 450111	0°00'00"	5.06 A	DP 450111	Class B
POST N DP 450111	UNMK SO 5508	ob31	280°52'30"	A DP 479941	0°00'00"	356.94 A	DP 479941	Class BD
UNMK SO 5508	PEG I SO 5508	ob37	286°12'00"	A SO 5508	0°00'00"	12.67 A	SO 5508	
PEG I SO 5508	PEG II SO 5508	ob38	13°32'00"	A SO 5508	0°00'00"	230.36 A	SO 5508	
PEG II SO 5508	PEG III SO 5508	ob39	346°54'00"	A SO 5508	0°00'00"	92.26 A	SO 5508	

Mark and Vector

Survey Number DP 597267

Meridional Circuit Taranaki 2000

From	To	Code	Bearing	Adpt Surv	Bearing Correction	Distance	Adpt Surv	Class
PEG III SO 5508	PEG IV SO 5508	ob40	37°45'00"	A SO 5508	0°00'00"	83.44 A	SO 5508	
PEG IV SO 5508	PEG V SO 5508	ob41	32°40'00"	A SO 5508	0°00'00"	143.71 A	SO 5508	
PEG V SO 5508	PEG VI SO 5508	ob42	350°38'00"	A SO 5508	0°00'00"	48.72 A	SO 5508	
PEG VI SO 5508	PEG SO 5508	ob45	7°20'00"	A SO 5508	0°00'00"	37.24 A	SO 5508	
PEG SO 5508	IT X SO 9178	ob46	63°04'00"	A SO 9178	0°00'00"	28.47 A	SO 9178	
PEG SO 5508	PEG SO 9178	ob47	82°36'00"	A SO 5508	0°00'00"	28.10 A	SO 5508	Class B
PEG SO 5508	UNMK SO 5508	ob70	262°36'00"	A SO 5508	0°00'00"	6.04 A	SO 5508	Class BD
UNMK SO 5508	IT X SO 9178	ob49	66°27'00"	C		34.22 C		
UNMK DP 450111	UNMK DP 450111	ob20	249°23'00"	A DP 450111	0°00'00"	13.18 A	DP 450111	Class B
UNMK DP 450111	UNMK DP 450111	ob72	218°37'00"	A DP 450111	0°00'00"	23.51 A	DP 450111	Class B
UNMK DP 450111	UNMK DP 450111	ob73	220°59'00"	A DP 450111	0°00'00"	10.00 A	DP 450111	Class B
UNMK DP 450111	UNMK DP 450111	ob74	130°59'00"	A DP 450111	0°00'00"	7.00 A	DP 450111	Class B
RS 28 SO 11172	UNMK 1 DP 597267	ob6	300°19'40"	C		264.57 C		
UNMK 1 DP 597267	UNMK 3 DP 597267	ob22	89°59'40"	C		5.00 C		Class BD
UNMK 3 DP 597267	PEG B DP 597267	ob71	89°59'40"	C		3.00 C		Class BD
PEG B DP 597267	PEG A DP 597267	ob69	89°59'40"	C		122.78 C		Class B
RS 28 SO 11172	PEG A DP 597267	ob7	323°51'20"	M		165.44 M		
RS 28 SO 11172	PEG B DP 597267	ob8	301°13'30"	M		257.70 M		
PEG VI SO 5508	UNMK 4 DP 597267	ob44	248°41'00"	C		7.30 C		

Mark Name	Mark Condition	Description
IT I DP 450111		Iron tube D 0.3 in grass
NAIL I DP 479941		Nail flush in conc tunnel roof
PEG A DP 597267		Peg 0.8m east of fence
PEG B DP 597267		Peg 0.5m west of fence
PEG DP 16456		N/A
POST B DP 479941		conc post
RS 25 SO 11173		N/A
RS 26 SO 11173		N/A
RS 27 SO 11172		N/A
RS 28 SO 11172		Brass plaque in conc pillar
RS 29 SO 11172		Brass plaque



Mark and Vector

Survey Number DP 597267
Meridional Circuit Taranaki 2000

Mark Name	Mark Condition	Description
UNMK 4 DP 597267		-
UNMK SO 5508		DCDB
UNMK SO 5508		Added for irreg line split from LoL CTG

*** End of Report ***

Schedule / Memorandum

Land Registration District

Taranaki

Plan Number

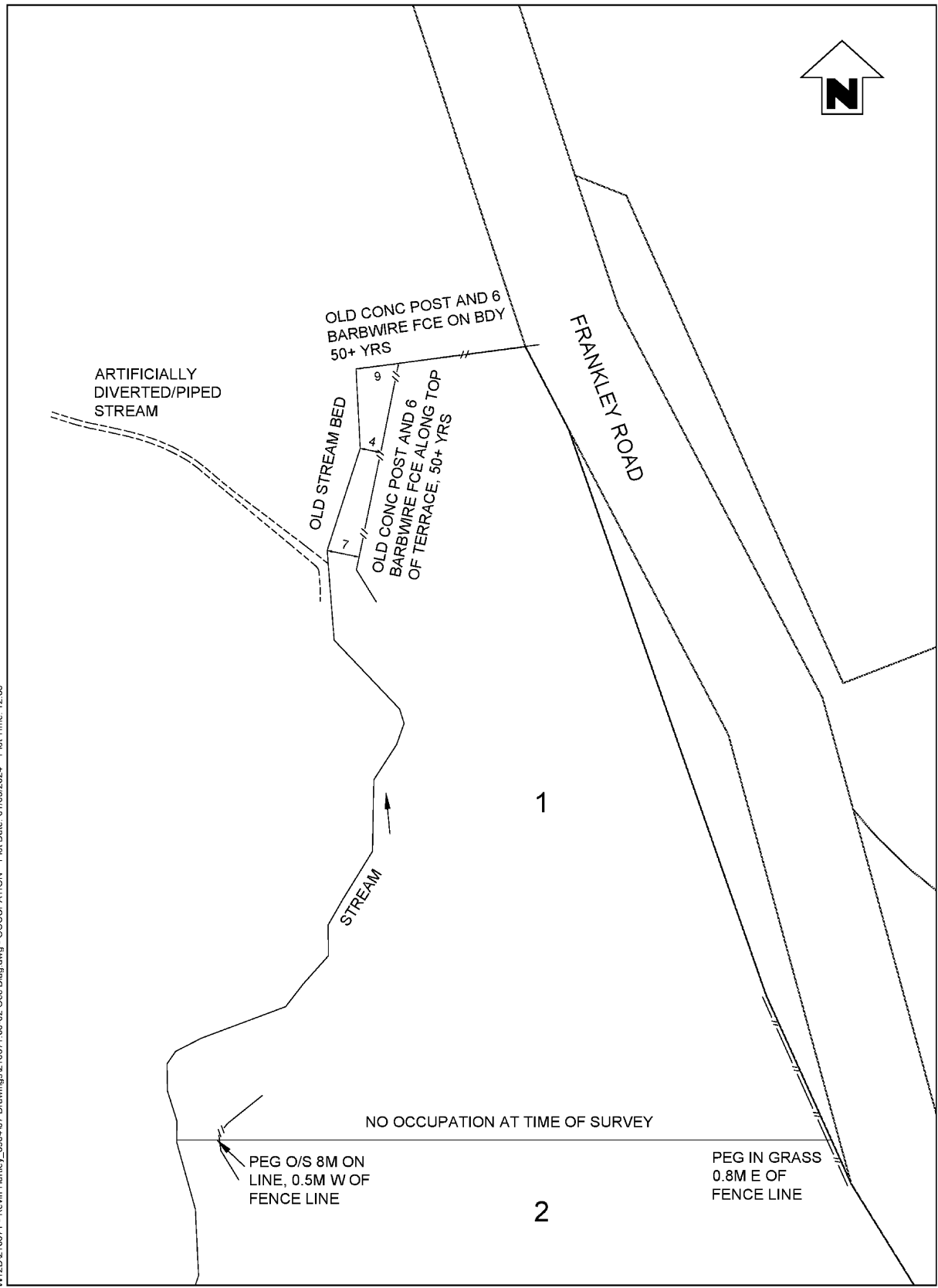
DP 597267

Territorial Authority

New Plymouth District Council

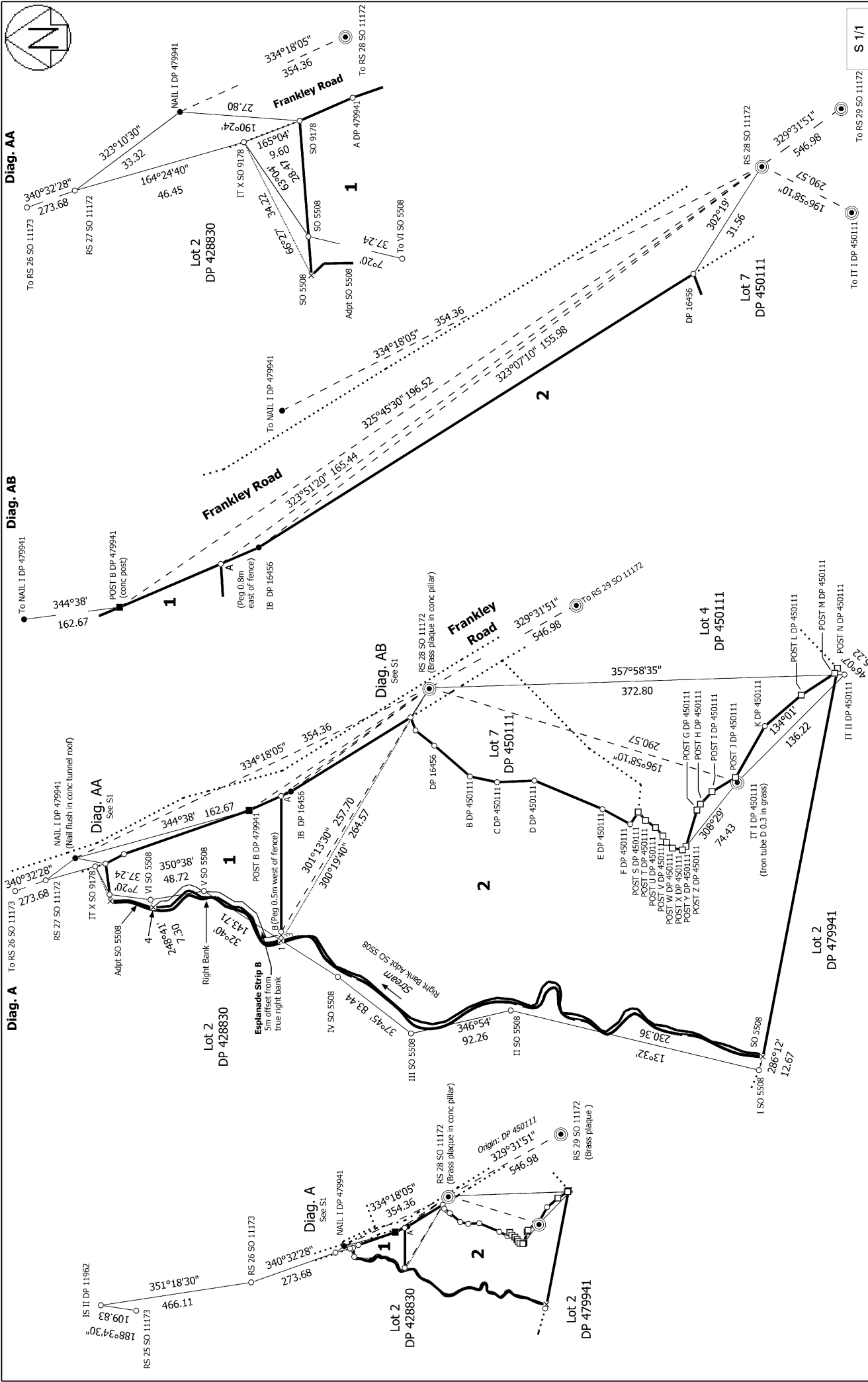
SCHEDULE OF EXISTING EASEMENTS			
Purpose	Shown	Servient Tenement (Burdened Land)	Creating Document
Right of Way	A	Lot 2	EI 9005253.2

Occupation Diagram

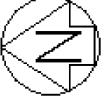


File Name: C:\125\data\BTM\2D\210871 - Kevin Herlihy_3564\07 Drawings\210871_00-02 Occ Diag.dwg - OCCUPATION Plot Date: 01/03/2024 Plot Time: 12:36

	<p style="text-align: center;">SURVEYING ENGINEERING PLANNING ENVIRONMENT</p>	<h2>OCCUPATION DIAGRAM</h2>	<p>Date: October 2023 Drawn: E JOHNSON Dwg file: 210871.00-02</p>
--	---	-----------------------------	---



<p>Land District: Taranaki</p>	<p>Surveyor: Kathryn Cecelia Barrett Firm: BTW Company (New Plymouth) Date of Survey: 9/10/2023</p>	<p>Record of Survey DP 597267</p>
<p>Lots 1 and 2 being a Subdivision of Lot 1 DP 479941</p> <p>Digitally Generated Plan Generated on: 25/03/2024 10:34:46m Page 9 of 10</p> <p>Deposited on: 5/03/2024</p>		



Diag. C

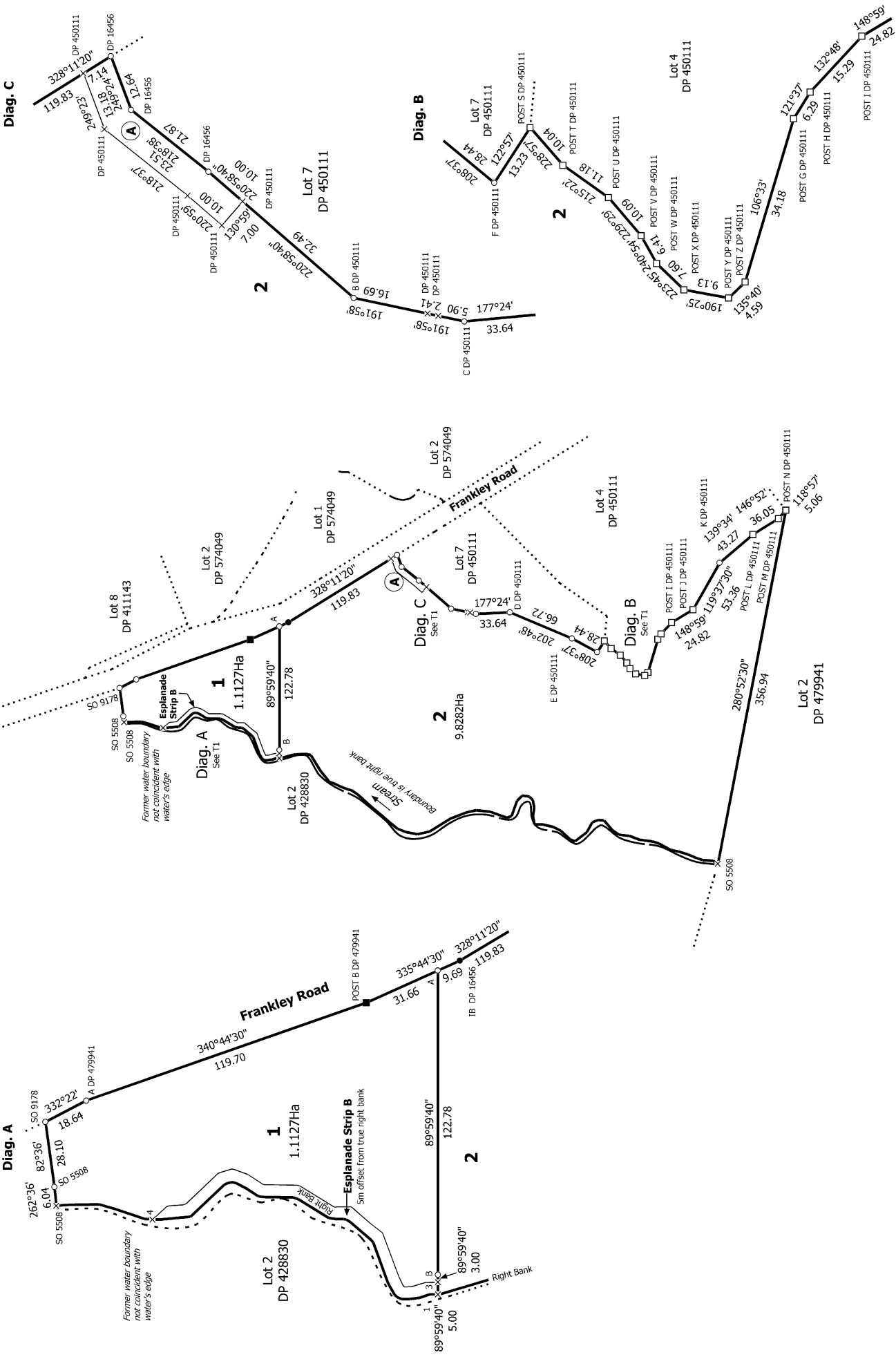
Diag. A

Diag. B

Diag. C

Diag. B

Diag. C



Land District: Taranaki

Surveyor: Kathryn Cecelia Barrett
Firm: BTW Company (New Plymouth)
Date of Survey: 9/10/2023

Lots 1 and 2 being a Subdivision of Lot 1 DP 479941

Record of Survey
DP 597267
Deposited on: 5/03/2024