

Record of Survey - DP 594581

Survey Number DP 594581
Surveyor Reference 6233 Wallace
Surveyor Guy Derek Panckhurst
Survey Firm Surveying The Bay Ltd (Hastings)
Surveyor Declaration I Guy Derek Panckhurst, being a licensed cadastral surveyor, certify that--
 (a) this dataset provided by me and its related survey are accurate, correct and in accordance with the Cadastral Survey Act 2002 and Cadastral Survey Rules 2021; and
 (b) the survey was undertaken by me or under my personal direction.
 Declared on 27 Sep 2023 12:10 PM

Survey Details

Dataset Description LOTS 1 & 2 BEING A SUBDIVISION OF PART TOWN SECTION 268 NAPIER
Purpose LT Subdivision
Status Deposited **Type** Survey
Land District Hawkes Bay **Survey Class** Class A
Meridional Circuit Hawkes Bay 2000 **Vertical Datum** None

Survey Dates

Surveyed Date 08/08/2023 **Certified Date** 27/09/2023
Submitted Date 27/09/2023 12:10:18 **Survey Approval Date** 27/09/2023
Deposit Date 08/12/2023

Referenced Surveys

Survey Number	Land District	Bearing Correction
DP 12690	Hawkes Bay	0°00'00"
DP 17582	Hawkes Bay	0°00'00"
DP 5127	Hawkes Bay	0°00'00"
DP 7068	Hawkes Bay	0°00'00"
DP 7330	Hawkes Bay	0°00'00"
SO 10154	Hawkes Bay	0°00'00"
SO 10768	Hawkes Bay	0°00'00"
DP 11448	Hawkes Bay	0°00'00"
DP 9121	Hawkes Bay	0°00'00"
SO 4875	Hawkes Bay	0°00'00"
DP 527109	Hawkes Bay	0°00'00"
LT 488621	Hawkes Bay	0°00'00"
DP 6214	Hawkes Bay	0°00'00"

Territorial Authorities

Napier City

Comprised In

RT HBG1/1106 Ltd
 RT HB54/117



Record of Survey - DP 594581

Created Parcels

Parcels	Parcel Intent	Area	RT Reference
Lot 1 Deposited Plan 594581	Fee Simple Title	0.0393 Ha	1147418
Lot 2 Deposited Plan 594581	Fee Simple Title	0.0064 Ha	1147419
Total Area		<u>0.0457 Ha</u>	

Mark and Vector

Survey Number DP 594581

Meridional Circuit Hawkes Bay 2000

From	To	Code	Bearing	Adpt Surv	Bearing Correction	Distance	Adpt Surv	Class
SS 79 A SO 4875	HILTI 5 DP 17582	ob0	183°57'15"	A SO 10768	0°00'00"	82.73 A	DP 17582	
HILTI 5 DP 17582	IS I DP 12690	ob19	183°57'15"	A SO 10768	0°00'00"	20.63 A	DP 17582	
IS I DP 12690	IS III DP 6214	ob20	183°57'15"	A SO 10768	0°00'00"	20.09 A	DP 12690	
IS III DP 6214	SS 72 SO 4876	ob22	183°57'15"	A SO 10768	0°00'00"	87.77 A	DP 7068	
SS 72 SO 4876	SS 73 SO 4876	ob2	273°56'51"	A SO 10768	0°00'00"	34.20 A	SO 10768	
SS 73 SO 4876	MA 5 SO 9893	ob3	250°59'50"	M		78.24 M		
MA 5 SO 9893	SS 76 SO 4876	ob4	340°34'35"	A SO 10768	0°00'00"	84.95 A	SO 10768	
SS 76 SO 4876	RM 1 SO 10011	ob7	341°05'50"	A SO 10768	0°00'00"	99.87 A	SO 10768	
RM 1 SO 10011	SS 79 A SO 4875	ob9	72°05'25"	A SO 10768	0°00'00"	192.59 A	SO 10768	
SS 79 A SO 4875	BP 6 SO 10768	ob1	0°08'45"	A SO 10768	0°00'00"	119.73 A	SO 10768	
BP 6 SO 10768	BP 5 SO 10768	ob55	251°48'40"	M		82.72 M		
BP 5 SO 10768	RM 4 SO 10768	ob59	251°11'30"	A SO 10768	0°00'00"	92.92 A	SO 10768	
RM 4 SO 10768	BP 3 SO 10768	ob60	248°04'10"	A SO 10768	0°00'00"	57.17 A	SO 10768	
BP 3 SO 10768	RM 1 SO 10011	ob61	160°31'20"	A SO 10768	0°00'00"	108.02 A	SO 10768	
BP 6 SO 10768	BP 7 SO 10768	ob56	69°02'30"	M		66.75 M		
BP 6 SO 10768	MA 1 DP 594581	ob57	180°29'00"	M		114.84 M		
MA 1 DP 594581	MA 5 DP 594581	ob63	249°05'00"	M		94.01 M		
MA 5 DP 594581	MA 2 DP 594581	ob66	252°06'40"	M		99.67 M		
MA 2 DP 594581	MA 6 DP 594581	ob69	160°17'50"	M		109.63 M		
MA 6 DP 594581	MA 5 SO 9893	ob83	161°35'40"	M		75.19 M		
MA 2 DP 594581	BP 3 SO 10768	ob70	340°34'40"	M		108.04 M		
MA 5 SO 9893	LP II SO 10154	ob5	340°51'35"	M		41.46 M		
LP II SO 10154	RM 1 SO 10011	ob10	340°51'35"	A SO 10154	0°00'00"	143.36 A	SO 10154	
MA 5 SO 9893	LP II SO 9753	ob6	161°15'20"	M		79.88 M		
LP II SO 9753	NAIL III DP 316395	ob84	250°19'00"	A DP 527109	0°00'00"	20.42 A	DP 527109	
NAIL III DP 316395	MA 5 SO 9893	ob85	355°32'30"	M		82.77 M		
MA 1 DP 594581	MA 6 LT 488621	ob64	247°46'10"	M		56.33 M		
MA 6 LT 488621	MA 5 DP 594581	ob80	251°04'00"	M		37.73 M		
BP 6 SO 10768	MA 7 LT 488621	ob58	179°07'00"	A LT 488621	0°00'00"	113.75 A	LT 488621	
MA 7 LT 488621	MA 6 LT 488621	ob62	247°47'00"	A DP 17582	0°00'00"	59.27 A	DP 17582	
MA 1 DP 594581	MA 4 DP 594581	ob65	189°10'00"	M		93.57 M		
MA 4 DP 594581	NAIL 2B DP 594581	ob71	18°44'50"	M		56.96 M		
NAIL 2B DP 594581	MA 1 DP 594581	ob73	354°57'30"	M		38.59 M		
MA 4 DP 594581	NAIL 7 DP 594581	ob72	279°03'30"	M		40.51 M		
NAIL 7 DP 594581	NAIL 8 DP 594581	ob74	199°53'30"	M		51.74 M		

Mark and Vector

Survey Number DP 594581

Meridional Circuit Hawkes Bay 2000

From	To	Code	Bearing	Adpt Surv	Bearing Correction	Distance	Adpt Surv	Class
NAIL 8 DP 594581	MA 6 DP 594581	ob79	245°54'20"	M		80.18 M		
SS 76 SO 4876	SS 96 SO 4875	ob8	341°15'25"	A SO 4875	0°00'00"	96.21 A	SO 4875	
SS 96 SO 4875	IS II DP 9121	ob11	71°00'06"	A SO 4875	0°00'00"	72.67 A	DP 9121	
IS II DP 9121	NAIL VI DP 7330	ob12	71°00'06"	A SO 4875	0°00'00"	25.18 A	DP 11448	
NAIL VI DP 7330	HILTI 1 DP 17582	ob14	71°00'06"	A SO 4875	0°00'00"	26.88 A	DP 17582	
HILTI 1 DP 17582	SS 79 A SO 4875	ob17	71°00'06"	A SO 4875	0°00'00"	67.56 A	DP 17582	
NAIL VI DP 7330	IS V DP 7330	ob15	163°48'20"	A DP 7330	0°00'00"	54.71 A	DP 7330	
IS V DP 7330	IT IV DP 7330	ob23	163°48'20"	A DP 7330	0°00'00"	5.39 A	DP 7330	
IT IV DP 7330	IS III DP 7330	ob24	175°34'00"	A DP 7330	0°00'00"	8.23 A	DP 7330	
IS III DP 7330	IBOLT II DP 7330	ob25	175°34'00"	A DP 7330	0°00'00"	10.70 A	DP 7330	
IBOLT II DP 7330	IS III DP 6214	ob27	104°12'00"	A DP 7330	0°00'00"	64.52 A	DP 7330	
HILTI 1 DP 17582	HILTI 2 DP 17582	ob18	161°23'10"	A DP 17582	0°00'00"	12.96 A	DP 17582	
HILTI 2 DP 17582	NAIL 2A DP 17582	ob29	161°23'10"	A DP 17582	0°00'00"	1.79 A	DP 17582	
NAIL 2A DP 17582	IT 4 DP 17582	ob31	161°23'10"	A DP 17582	0°00'00"	47.95 A	DP 17582	
IT 4 DP 17582	IT 6 DP 17582	ob32	91°39'30"	A DP 17582	0°00'00"	26.98 A	DP 17582	
IT 6 DP 17582	HILTI 5 DP 17582	ob34	91°39'30"	A DP 17582	0°00'00"	11.21 A	DP 17582	
HILTI 2 DP 17582	PEG (23) DP 17582	ob30	236°57'00"	A DP 17582	0°00'00"	11.65 A	DP 17582	
PEG (23) DP 17582	NAIL 2A DP 17582	ob35	65°45'00"	A DP 17582	0°00'00"	11.34 A	DP 17582	
IT 4 DP 17582	DISK 2A DP 594581	ob33	259°50'00"	A DP 17582	0°00'00"	11.11 A	DP 17582	
PEG (23) DP 17582	DISK 5A DP 594581	ob36	161°00'40"	A DP 17582	0°00'00"	38.85 C		Class A
DISK 5A DP 594581	DISK 2A DP 594581	ob86	161°00'40"	A DP 17582	0°00'00"	6.36 C		Class A
IS II DP 9121	TACK X DP 11448	ob13	129°21'30"	A DP 11448	0°00'00"	17.40 A	DP 11448	
TACK X DP 11448	TACK I DP 11448	ob38	71°18'40"	A DP 11448	0°00'00"	0.82 A	DP 11448	
TACK I DP 11448	NAIL (29) DP 11448	ob39	71°18'40"	A DP 11448	0°00'00"	88.85 A	DP 11448	
NAIL (29) DP 11448	SS 79 A SO 4875	ob41	34°40'00"	A DP 11448	0°00'00"	25.82 A	DP 11448	
TACK I DP 11448	CNR BLDG (30) DP 11448	ob40	76°13'30"	A DP 11448	0°00'00"	10.44 A	DP 11448	

Mark and Vector

Survey Number DP 594581

Meridional Circuit Hawkes Bay 2000

From	To	Code	Bearing	Adpt Surv	Bearing Correction	Distance	Adpt Surv	Class
CNR BLDG (30) DP 11448	NAIL VI DP 7330	ob42	358°01'00"	A DP 7330	0°00'00"	16.51 A	DP 7330	
CNR BLDG (30) DP 11448	UNMK 31 DP 594581	ob43	71°00'06"	A DP 17582	0°00'00"	10.14 C		
UNMK 31 DP 594581	PEG (23) DP 17582	ob45	71°00'06"	A DP 17582	0°00'00"	10.18 C		Class A
NAIL VI DP 7330	UNMK 31 DP 594581	ob16	142°24'00"	A DP 7330	0°00'00"	16.64 A	DP 7330	
IS I DP 12690	IT II DP 12690	ob21	276°58'30"	A DP 12690	0°00'00"	67.39 A	DP 12690	
IS III DP 7330	IBOLT (33) DP 7330	ob26	222°36'00"	A DP 7330	0°00'00"	4.09 A	DP 7330	
IBOLT II DP 7330	IS (34) DP 7330	ob28	10°56'30"	A DP 7330	0°00'00"	12.96 A	DP 7330	
IT II DP 12690	IS (34) DP 7330	ob48	86°52'10"	A DP 12690	0°00'00"	5.42 A	DP 12690	
IT II DP 12690	IBOLT (33) DP 7330	ob49	187°48'00"	A DP 12690	0°00'00"	4.79 A	DP 12690	
IT II DP 12690	PEG (35) DP 12690	ob50	0°27'00"	A DP 12690	0°00'00"	4.90 A	DP 12690	
IT II DP 12690	MARK (36) DP 12690	ob51	36°43'00"	A DP 12690	0°00'00"	8.20 A	DP 12690	
PEG (35) DP 12690	MARK (36) DP 12690	ob52	71°01'00"	A DP 12690	0°00'00"	5.15 A	DP 12690	
CNR BLDG (30) DP 11448	PEG (35) DP 12690	ob44	161°01'40"	A DP 11448	0°00'00"	45.28 A	DP 11448	
MARK (36) DP 12690	UNMK 1A DP 594581	ob53	70°50'00"	A DP 12690	0°00'00"	5.06 A	DP 12690	
UNMK 1A DP 594581	DISK 2A DP 594581	ob54	70°50'00"	C		10.09 C		Class A
UNMK 31 DP 594581	UNMK 6A DP 594581	ob46	160°54'00"	C		38.86 C		Class A
UNMK 6A DP 594581	UNMK 1A DP 594581	ob87	160°54'00"	C		6.38 C		Class A
NAIL 7 DP 594581	UNMK 1A DP 594581	ob75	237°25'00"	C		10.39 C		
NAIL 7 DP 594581	DISK 2A DP 594581	ob76	161°05'00"	M		2.41 M		
NAIL 7 DP 594581	DISK 5A DP 594581	ob77	340°55'00"	M		3.95 M		
NAIL 7 DP 594581	UNMK 6A DP 594581	ob78	272°18'00"	C		10.85 C		
PEG (23) DP 17582	DISK 3A DP 594581	ob37	341°00'40"	C		0.13 C		
UNMK 31 DP 594581	DISK 4A DP 594581	ob47	340°54'00"	C		0.13 C		
MA 5 DP 594581	DISK 4A DP 594581	ob67	148°26'00"	M		17.79 M		
MA 6 LT 488621	DISK 4A DP 594581	ob81	223°55'00"	M		38.03 M		

Mark and Vector

Survey Number DP 594581

Meridional Circuit Hawkes Bay 2000

From	To	Code	Bearing	Adpt Surv	Bearing Correction	Distance	Adpt Surv	Class
MA 5 DP 594581	DISK 3A DP 594581	ob68	122°02'00" M			22.34 M		
MA 6 LT 488621	DISK 3A DP 594581	ob82	214°48'00" M			29.34 M		
UNMK 6A DP 594581	DISK 5A DP 594581	ob88	70°57'00" C			10.10 C		Class A

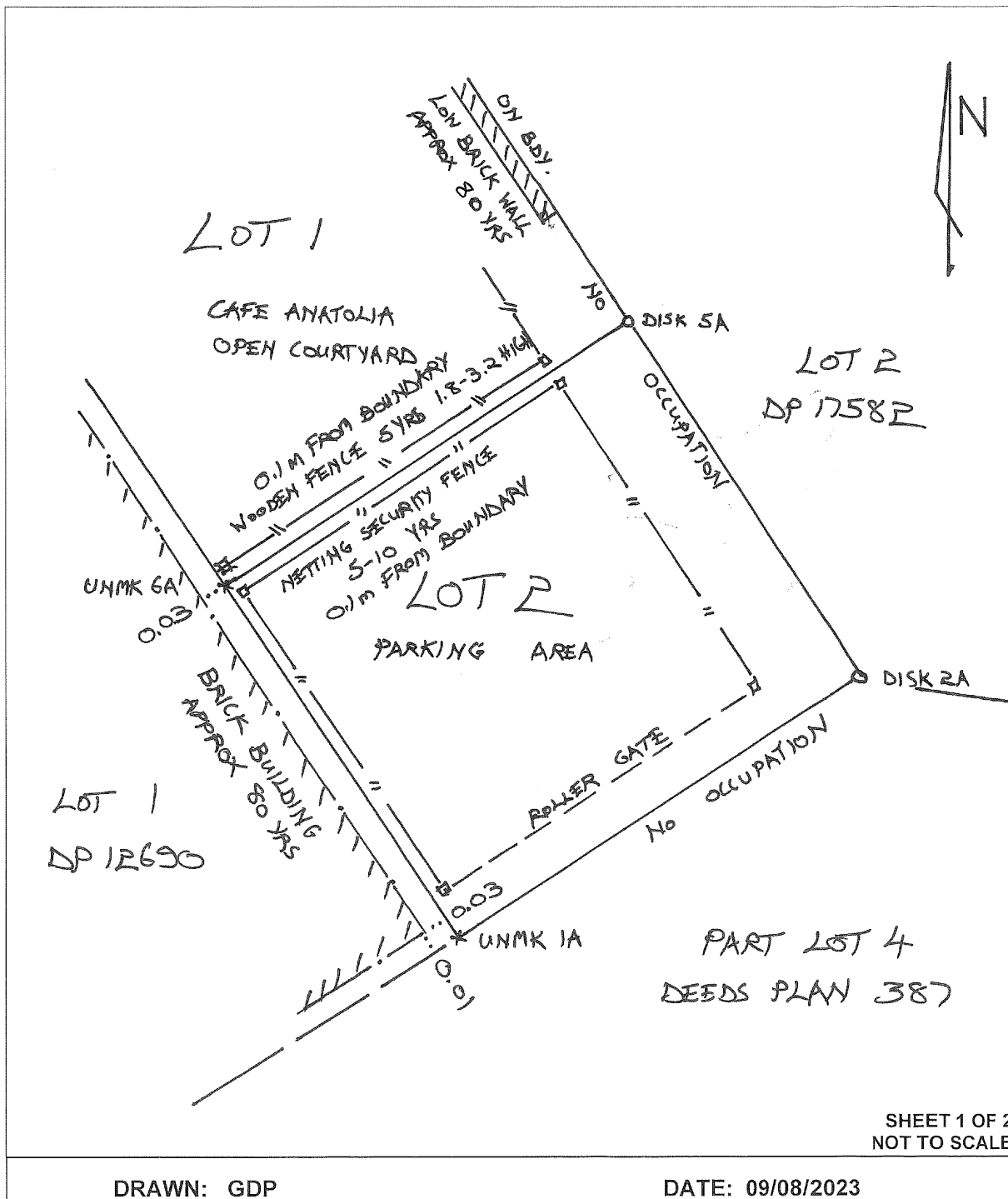
Mark Name	Mark Condition	Description
BP 3 SO 10768		CT01; Under cast iron cover
BP 5 SO 10768		CT03; Under cast iron cover
BP 6 SO 10768		CT04; Under cast iron cover
BP 7 SO 10768		CT4A; Under cast iron cover
DISK 2A DP 594581		In seal
DISK 3A DP 594581		In paving block
DISK 4A DP 594581		In paving block
DISK 5A DP 594581		In seal
LP II SO 10154		In top of kerb
LP II SO 9753		In top of kerb
MA 1 DP 594581		In top of kerb
MA 2 DP 594581		In concrete surround of back sump
MA 4 DP 594581		In top of kerb
MA 5 DP 594581		In concrete surround of back sump
MA 5 SO 9893		In kerb; Slightly damaged
MA 6 DP 594581		In concrete surround of back sump
MA 6 LT 488621		In concrete surround of back sump
NAIL 2B DP 594581		In sealed footpath
NAIL 7 DP 594581		In seal
NAIL 8 DP 594581		In seal; 0.65 from light pole
NAIL III DP 316395		In top of kerb
SS 73 SO 4876		CT0N; Under cast iron cover
UNMK 1A DP 594581		Very close to corner of brick wall of building
UNMK 31 DP 594581		Within building
UNMK 6A DP 594581		Between netting and wooden fences

*** End of Report ***

Occupation Diagram

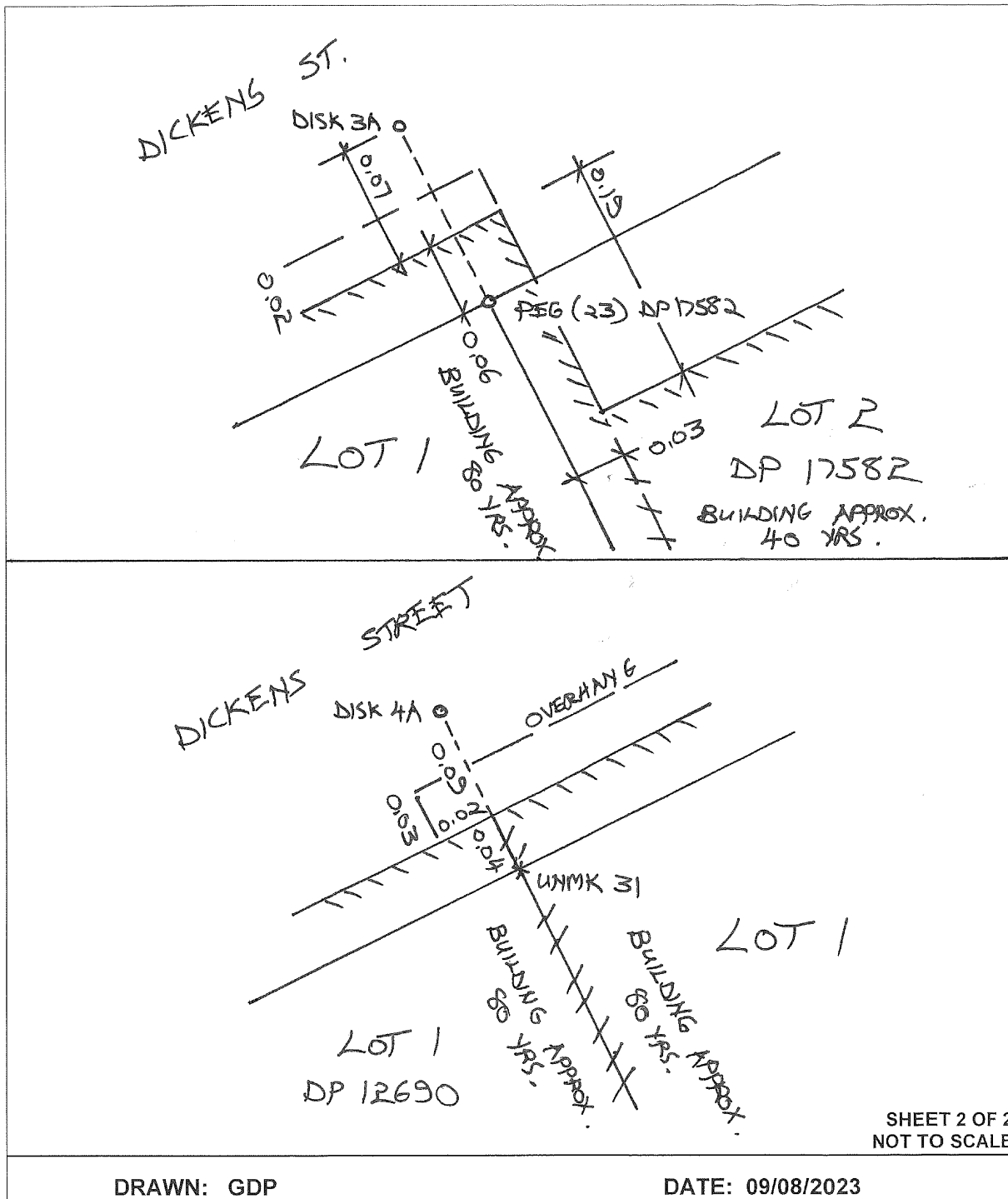


OCCUPATION DIAGRAM Plan No. DP 594581



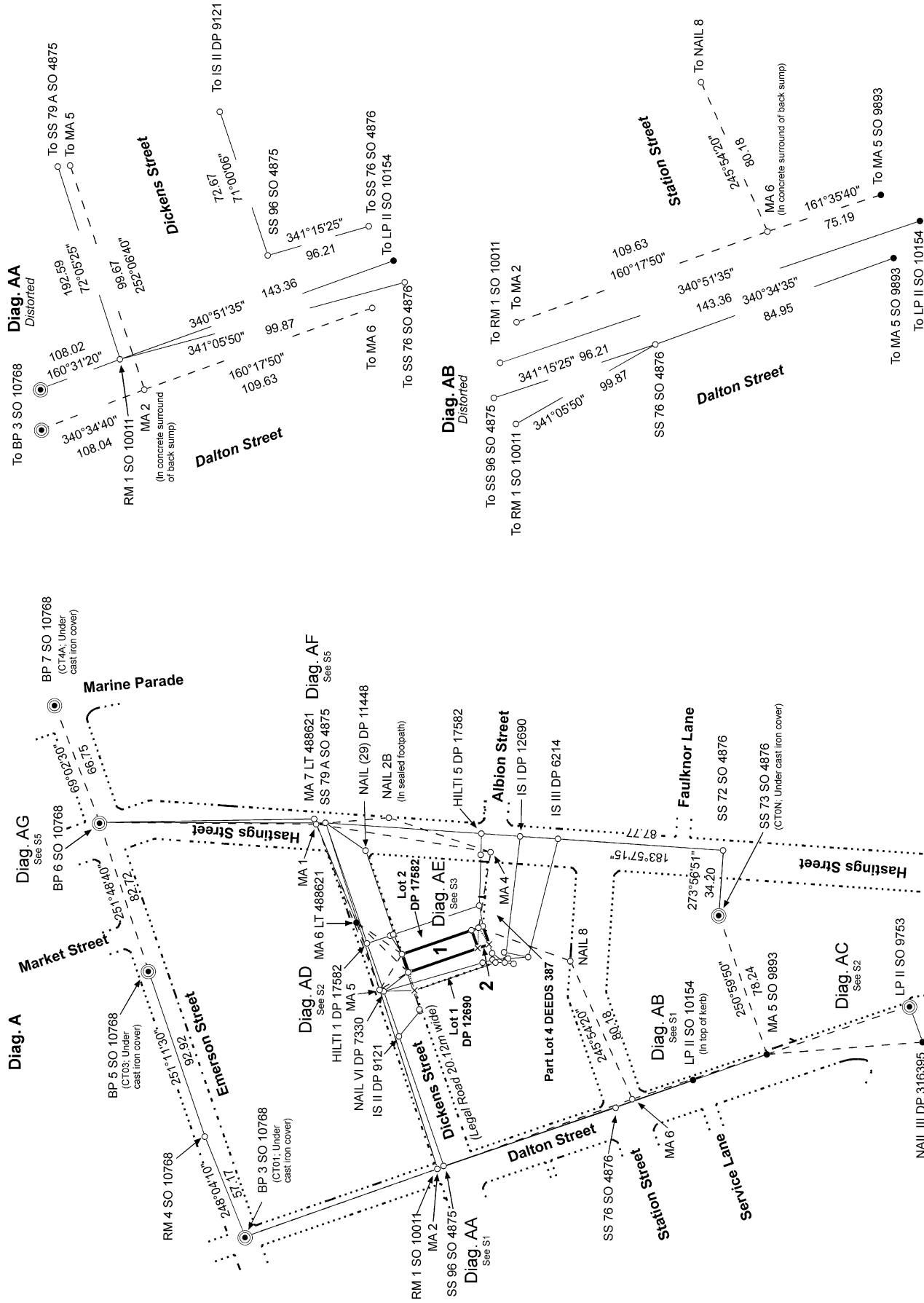


OCCUPATION DIAGRAM Plan No. DP 594581



DRAWN: GDP

DATE: 09/08/2023



S 1/5

LOTS 1 & 2 BEING A SUBDIVISION OF PART TOWN SECTION 268 NAPIER

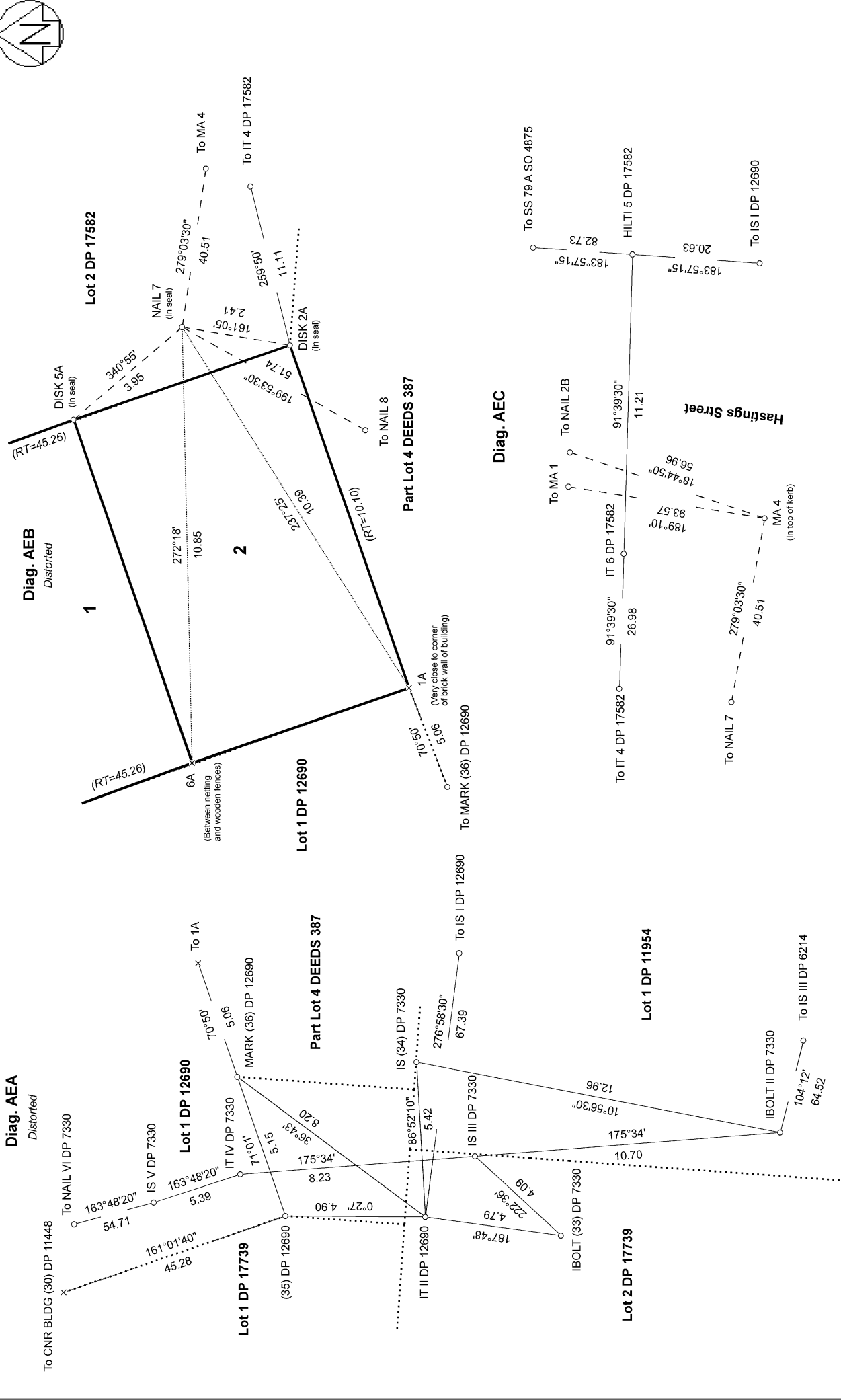
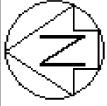
Land District: Hawkes Bay

Digitally Generated Plan
Generated on: 22/01/2024 12:21:01 PM Page 9 of 14

Surveyor: Guy Derek Panckhurst
Firm: Surveying The Bay Ltd (Hastings)
Date of Survey: 8/08/2023

Record of Survey
DP 594581
Deposited on: 8/12/2023

6233 Wallace



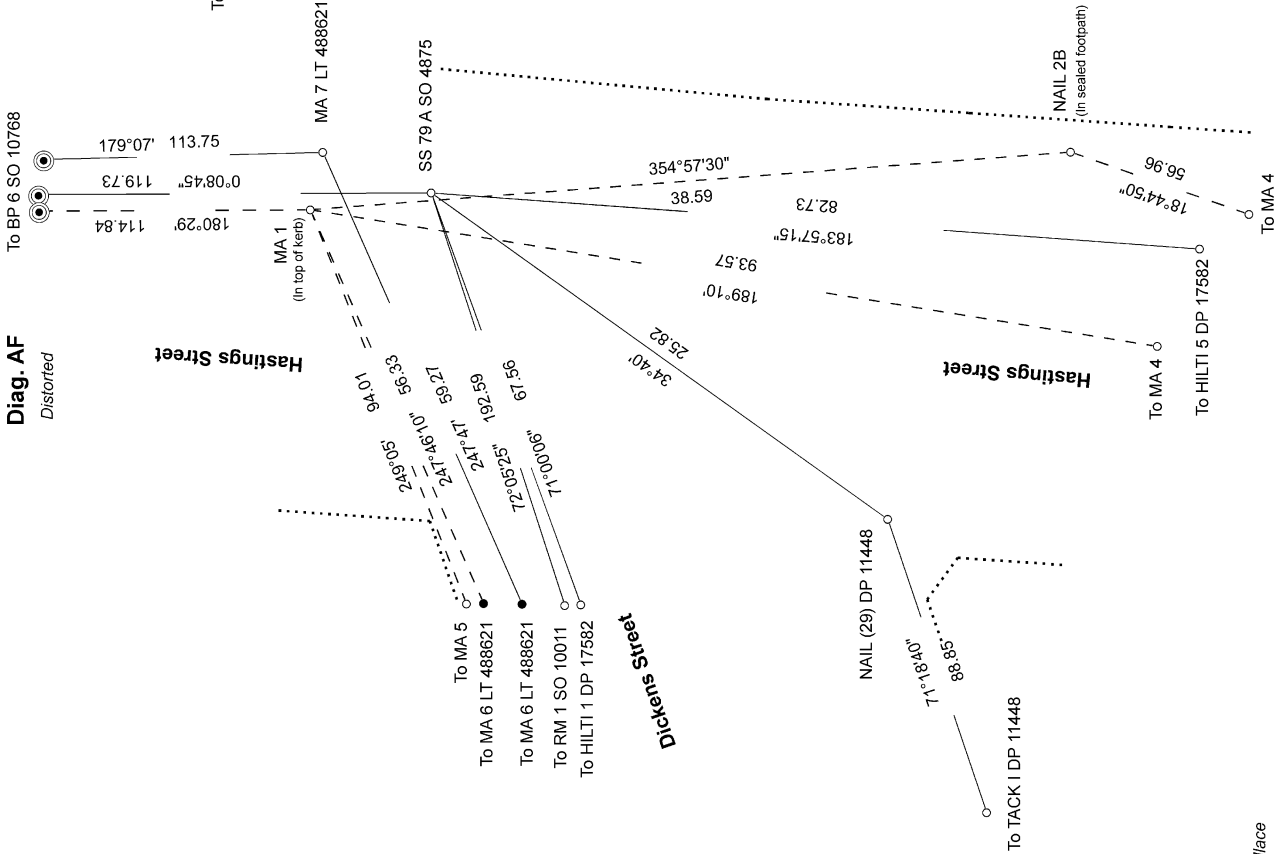
S 4/5

<p>Land District: Hawkes Bay</p>	<p>Surveyor: Guy Derek Panckhurst Firm: Surveying The Bay Ltd (Hastings) Date of Survey: 8/08/2023</p>	<p>RECORD OF SURVEY DP 594581 Deposited on: 8/12/2023</p>
<p>LOTS 1 & 2 BEING A SUBDIVISION OF PART TOWN SECTION 268 NAPIER</p>		
<p>Digitally Generated Plan Generated on: 22/07/2024 12:21:01 PM Page 12 of 14</p>		

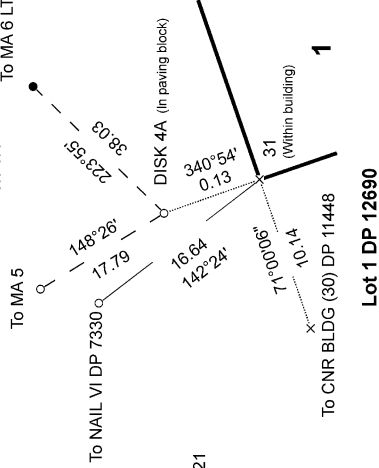
6233 Wallace



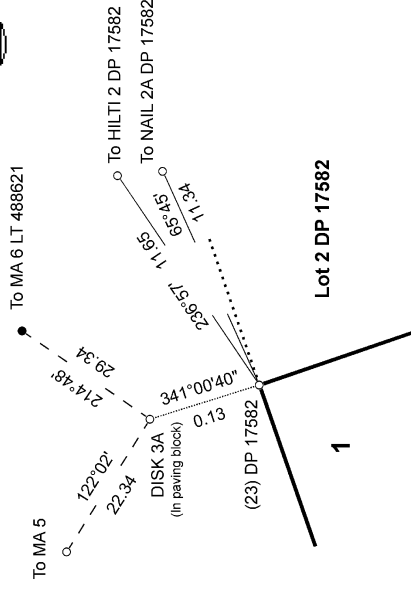
Diag. AF
Distorted



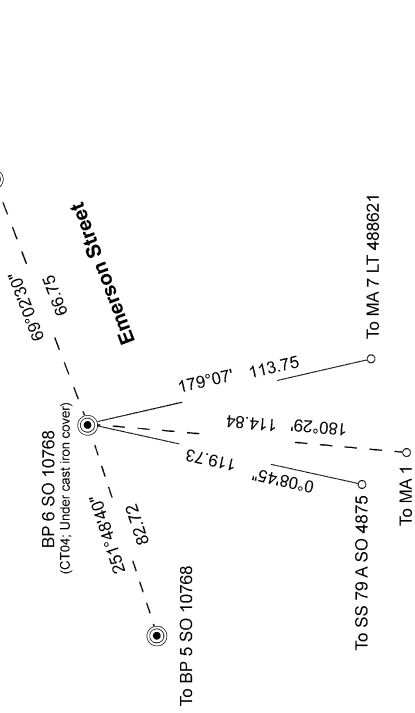
Diag. ADA
Distorted



Diag. ADB
Distorted



Diag. AG
Distorted



6233 Wallace

S 5/5

Land District: Hawkes Bay

Digitally Generated Plan

Generated on: 22/07/2024 12:21:01 PM Page 13 of 14

LOTS 1 & 2 BEING A SUBDIVISION OF PART TOWN SECTION 268 NAPIER

Surveyor: Guy Derek Panckhurst

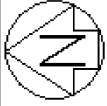
Firm: Surveying The Bay Ltd (Hastings)

Date of Survey: 8/08/2023

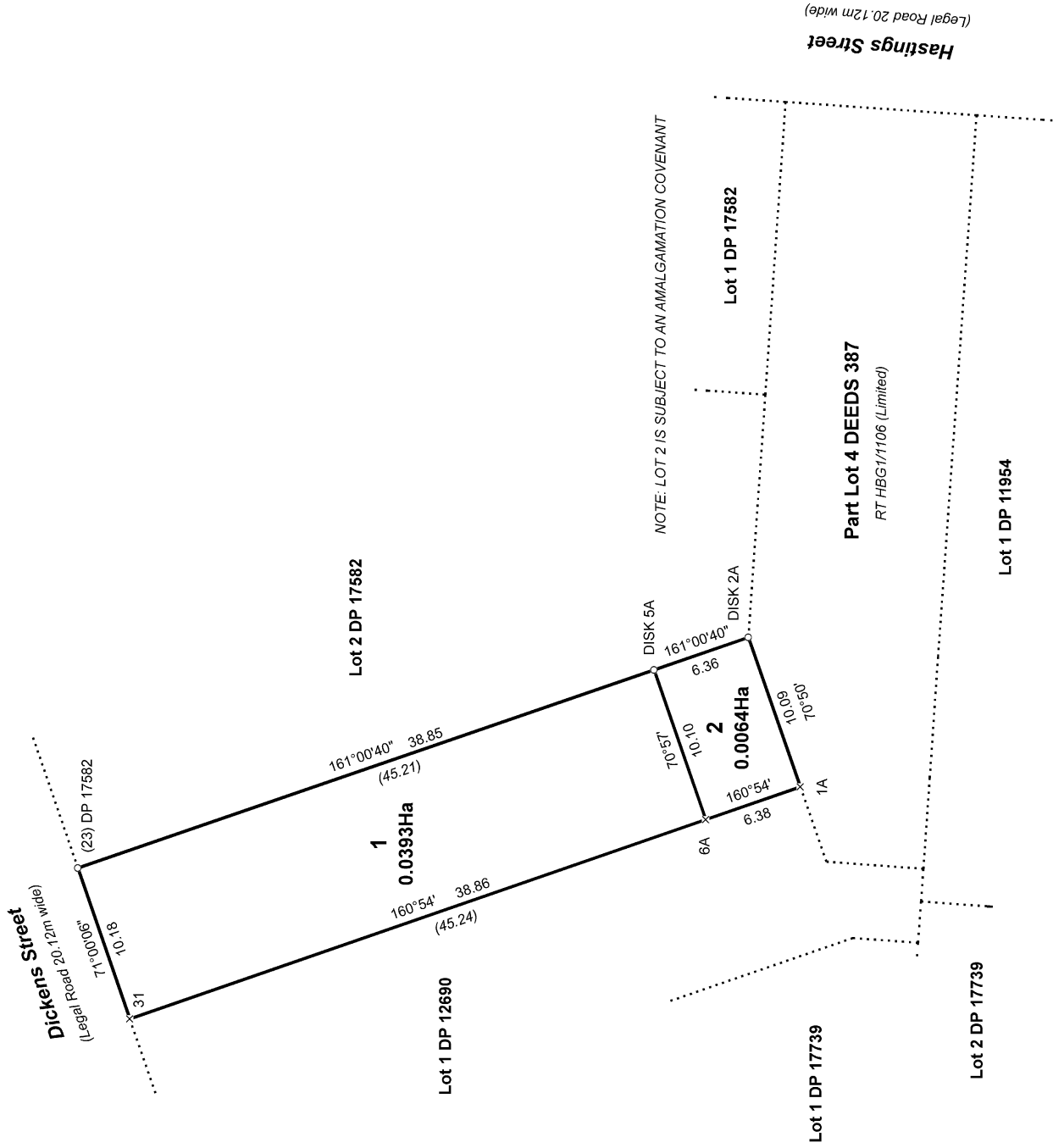
Record of Survey

DP 594581

Deposited on: 8/12/2023



Diag. A



6233 Wallace
RMS 230039

T 1/1

Land District: Hawkes Bay

Digitally Generated Plan

Generated on: 22/07/2024 12:21:01 Page 14 of 14

LOTS 1 & 2 BEING A SUBDIVISION OF PART TOWN SECTION 268 NAPIER

Surveyor: Guy Derek Panckhurst
Firm: Surveying The Bay Ltd (Hastings)
Date of Survey: 8/08/2023

Record of Survey
DP 594581

Deposited on: 8/12/2023