



Record of Survey - DP 594557

Survey Number DP 594557
Surveyor Reference 7769 Quarry Rd
Surveyor Grant John Wackrow
Survey Firm Yeomans Survey Solutions Ltd (Auckland)
Surveyor Declaration I Grant John Wackrow, being a licensed cadastral surveyor, certify that--
 (a) this dataset provided by me and its related survey are accurate, correct and in accordance with the Cadastral Survey Act 2002 and Cadastral Survey Rules 2021; and
 (b) the survey was undertaken by me or under my personal direction.
 Declared on 14 Feb 2024 12:56 PM

Survey Details

Dataset Description Lots 30, 31 & 32 being Parts Allot 245 PSH OF Opaheke, Section 1 SO 63692 and Part Lot 2 DP 21906

Purpose LT Subdivision

Status	Deposited	Type	Survey
Land District	North Auckland	Survey Class	Class A
Meridional Circuit	Mount Eden 2000	Vertical Datum	None

Survey Dates

Surveyed Date	28/09/2023	Certified Date	14/02/2024
Submitted Date	14/02/2024 12:56:01	Survey Approval Date	14/02/2024
Deposit Date	16/02/2024		

Referenced Surveys

Survey Number	Land District	Bearing Correction
DP 119	North Auckland	0°00'00"
LT 82632	North Auckland	-0°01'00"
SO 47170	North Auckland	-0°00'40"
SO 47622	North Auckland	-0°00'40"
SO 63692	North Auckland	0°00'00"
DP 21906	North Auckland	0°00'00"
DP 76025	North Auckland	0°01'20"
SO 56185	North Auckland	0°01'20"
DP 197449	North Auckland	0°00'00"
DP 376869	North Auckland	0°00'00"
DP 534030	North Auckland	0°00'00"
DP 541540	North Auckland	0°00'00"
SO 543175	North Auckland	0°00'00"
DP 590424	North Auckland	0°00'00"

Territorial Authorities

Auckland Council



Record of Survey - DP 594557

Comprised In

RT NA77D/791

RT NA7D/799

Created Parcels

Parcels	Parcel Intent	Area	RT Reference
	Hydro		
	Hydro		
Lot 32 Deposited Plan 594557	Fee Simple Title	0.0024 Ha	1157037
Lot 31 Deposited Plan 594557	Fee Simple Title	0.0187 Ha	1157156
	Hydro		
	Hydro		
Lot 30 Deposited Plan 594557	Fee Simple Title	1.9036 Ha	1157037
Total Area		<u>1.9247 Ha</u>	

Mark and Vector

Survey Number DP 594557

Meridional Circuit Mount Eden 2000

From	To	Code	Bearing	Adpt Surv	Bearing Correction	Distance	Adpt Surv	Class
IT I LT 82632	IT VII DP 98804	ob0	334°20'30"	A DP 197449	0°00'00"	190.74 A	DP 197449	
IT VII DP 98804	IS I SO 63692	ob7	111°43'00"	A DP 197449	0°00'00"	99.72 A	DP 197449	
IS I SO 63692	IS II LT 82632	ob8	184°15'00"	A SO 63692	0°00'00"	27.55 A	SO 63692	
IS II LT 82632	IT I LT 82632	ob11	184°15'00"	A SO 63692	0°00'00"	107.86 A	SO 63692	
IT I LT 82632	IT X DP 76025	ob1	124°57'40"	A DP 534030	0°00'00"	308.47 A	DP 534030	
IT X DP 76025	IT A SO 514032	ob12	261°13'00"	A DP 541540	0°00'00"	479.28 A	DP 541540	
IT A SO 514032	IT I LT 82632	ob17	41°27'45"	M		333.55 M		
IT A SO 514032	IS 101 DP 594557	ob18	80°06'05"	M		546.62 M		
IS 101 DP 594557	IS 102 DP 594557	ob101	273°43'30"	M		85.86 M		
IS 102 DP 594557	IT I LT 82632	ob116	302°57'40"	M		276.46 M		
IT I LT 82632	IS 103 DP 594557	ob2	119°25'30"	M		139.76 M		
IS 103 DP 594557	IS 104 DP 594557	ob119	112°04'00"	M		62.68 M		
IS 104 DP 594557	IT A SO 514032	ob122	248°30'40"	M		430.59 M		
IT I LT 82632	IS 1 SO 543175	ob3	355°30'30"	M		116.14 M		
IS 1 SO 543175	IS VIIA DP 21906	ob126	132°36'50"	M		285.98 M		
IS VIIA DP 21906	IS 104 DP 594557	ob131	236°18'00"	M		25.88 M		
IS 101 DP 594557	IT XIII DP 197449	ob102	320°42'40"	M		142.99 M		
IT XIII DP 197449	IT I LT 82632	ob134	281°17'10"	M		231.56 M		
IS 1 SO 543175	IS XI DP 197449	ob127	63°47'00"	M		53.61 M		
IS XI DP 197449	IT XIII DP 197449	ob139	134°29'30"	M		263.65 M		
IS 103 DP 594557	IS VIIA DP 21906	ob120	96°35'00"	M		80.16 M		
IS 104 DP 594557	IS 101 DP 594557	ob123	114°49'50"	M		151.85 M		
IS 1 SO 543175	IS III LT 82632	ob128	318°21'00"	M		17.18 M		
IS III LT 82632	IT I LT 82632	ob144	170°56'10"	M		130.21 M		
IS 104 DP 594557	IS 102 DP 594557	ob124	138°07'50"	M		78.13 M		
IS III LT 82632	IS I SO 63692	ob145	78°06'00"	A SO 543175	0°00'00"	31.24 A	SO 543175	
IS I SO 63692	IS XI DP 197449	ob9	81°21'30"	A SO 543175	0°00'00"	29.28 A	SO 543175	
IT XIII DP 197449	IS VIIA DP 21906	ob135	218°19'00"	M		41.48 M		
IS I SO 63692	UNMK 238 SO 543175	ob10	98°29'00"	A SO 543175	0°00'00"	2.43 A	SO 543175	

Mark and Vector

Survey Number DP 594557

Meridional Circuit Mount Eden 2000

From	To	Code	Bearing	Adpt Surv	Bearing Correction	Distance	Adpt Surv	Class
UNMK 238 SO 543175	PEG 212 SO 543175	ob19	182°13'50"	A SO 543175	0°00'00"	2.15 A	SO 543175	
PEG 212 SO 543175	PEG 138 SO 543175	ob20	182°13'50"	A SO 543175	0°00'00"	14.98 A	SO 543175	
PEG 138 SO 543175	IS I SO 63692	ob21	354°22'00"	A SO 543175	0°00'00"	17.57 A	SO 543175	
PEG 138 SO 543175	PEG 329 LT 590424	ob22	182°13'50"	A SO 63692	0°00'00"	1.70 A	SO 63692	Class A
PEG 329 LT 590424	PEG 113 DP 594557	ob24	182°13'50"	A SO 63692	0°00'00"	94.01 A	SO 63692	Class A
PEG 113 DP 594557	IT I LT 82632	ob25	200°08'00"	M		23.35 M		
IT X DP 76025	IS XI DP 76025	ob13	162°43'30"	A DP 76025	0°01'20"	114.27 A	DP 76025	
IS XI DP 76025	IS XII DP 76025	ob26	116°04'30"	A DP 76025	0°01'20"	44.82 A	DP 76025	
IS XII DP 76025	IS XIII DP 76025	ob27	150°03'50"	A DP 76025	0°01'20"	105.87 A	DP 76025	
IS XIII DP 76025	IT XIV DP 76025	ob28	150°03'50"	A DP 76025	0°01'20"	58.20 A	DP 76025	
IT XIV DP 76025	IT II SO 56185	ob29	68°10'10"	A DP 76025	0°01'20"	33.70 A	SO 56185	
IT II SO 56185	IT III DP 55511	ob30	45°01'30"	A DP 376869	0°00'00"	584.80 A	DP 376869	
IT III DP 55511	IT X DP 76025	ob31	255°32'50"	A DP 534030	0°00'00"	620.70 A	DP 534030	
IS XI DP 197449	IS 146 SO 543175	ob140	126°24'00"	A SO 543175	0°00'00"	115.64 A	SO 543175	
IS 146 SO 543175	IS 147 SO 543175	ob32	243°13'00"	A SO 543175	0°00'00"	36.54 A	SO 543175	
IS 147 SO 543175	IS I SO 63692	ob34	312°04'00"	A SO 543175	0°00'00"	120.42 A	SO 543175	
IS 146 SO 543175	IS 186 SO 543175	ob33	247°14'00"	A SO 543175	0°00'00"	49.71 A	SO 543175	
IS 186 SO 543175	IS 147 SO 543175	ob35	78°08'00"	A SO 543175	0°00'00"	13.49 A	SO 543175	
IS 186 SO 543175	UNMK 223 SO 543175	ob36	304°04'00"	A SO 543175	0°00'00"	10.08 A	SO 543175	
UNMK 223 SO 543175	UNMK 229 SO 543175	ob37	318°24'00"	A SO 543175	0°00'00"	17.58 A	SO 543175	Class A
UNMK 229 SO 543175	UNMK 230 SO 543175	ob38	320°53'00"	A SO 543175	0°00'00"	14.95 A	SO 543175	Class A
UNMK 230 SO 543175	IS 146 SO 543175	ob39	98°25'30"	A SO 543175	0°00'00"	76.10 A	SO 543175	
IT XIII DP 197449	PEG (30) DP 197449	ob136	219°03'00"	A DP 197449	0°00'00"	54.22 A	DP 197449	
PEG (30) DP 197449	PEG (31) DP 197449	ob40	295°40'00"	A DP 197449	0°00'00"	26.24 A	DP 197449	Class AD
PEG (31) DP 197449	PEG (32) DP 197449	ob41	297°25'00"	A DP 197449	0°00'00"	30.76 A	DP 197449	Class A
PEG (32) DP 197449	PEG (33) DP 197449	ob42	359°00'00"	A DP 197449	0°00'00"	48.00 A	DP 197449	Class A

Mark and Vector

Survey Number DP 594557

Meridional Circuit Mount Eden 2000

From	To	Code	Bearing	Adpt Surv	Bearing Correction	Distance	Adpt Surv	Class
PEG (33) DP 197449	UNMK (191) DP 197449	ob43	319°00'00"	A DP 197449	0°00'00"	95.01 A	DP 197449	Class A
UNMK (191) DP 197449	IS 147 SO 543175	ob44	99°35'00"	A SO 543175	0°00'00"	20.91 A	SO 543175	
IT X DP 76025	IS XII DP 76025	ob14	150°03'50"	A DP 541540	0°00'00"	148.64 A	DP 541540	
IT X DP 76025	IS IX DP 76025	ob15	62°30'30"	A DP 76025	0°01'20"	71.45 A	DP 76025	
IS IX DP 76025	PEG 121 DP 76025	ob46	145°26'20"	A DP 76025	0°01'20"	20.08 A	DP 76025	
PEG 121 DP 76025	PEG 99 DP 594557	ob48	247°11'50"	C		0.20 C		Class A
PEG 99 DP 594557	UNMK 87 DP 594557	ob156	247°11'50"	C		7.28 C		Class AD
UNMK 87 DP 594557	UNMK 85 DP 594557	ob81	247°11'50"	C		1.72 C		Class AD
UNMK 85 DP 594557	UNMK 86 DP 594557	ob79	247°11'50"	C		6.50 C		Class AD
UNMK 86 DP 594557	UNMK 88 DP 594557	ob80	247°11'50"	C		1.43 C		Class AD
UNMK 88 DP 594557	PEG 50 DP 594557	ob82	247°11'50"	C		66.00 C		Class AD
PEG 50 DP 594557	PEG 53 DP 76025	ob155	247°11'50"	C		3.00 C		Class A
PEG 53 DP 76025	IT X DP 76025	ob50	15°13'20"	A DP 76025	0°01'20"	17.54 A	DP 76025	
PEG 121 DP 76025	UNMK (38) DP 76025	ob49	67°11'50"	C		1.80 A	DP 76025	Class A
UNMK (38) DP 76025	UNMK (39) DP 76025	ob51	125°57'10"	A DP 76025	0°01'20"	178.43 A	DP 76025	
UNMK (39) DP 76025	PEG (40) DP 76025	ob53	248°10'00"	A DP 76025	0°01'20"	1.70 A	DP 76025	
PEG (40) DP 76025	PEG 50 DP 76025	ob54	248°10'00"	A DP 76025	0°01'20"	164.63 A	DP 76025	
PEG 50 DP 76025	PEG 51 DP 76025	ob55	323°39'10"	A DP 76025	0°01'20"	12.82 A	DP 76025	
PEG 51 DP 76025	PEG 52 DP 76025	ob56	314°55'10"	A DP 76025	0°01'20"	39.41 A	DP 76025	
PEG 52 DP 76025	PEG 53 DP 76025	ob57	339°20'10"	A DP 76025	0°01'20"	100.86 A	DP 76025	
IS IX DP 76025	IS XVI DP 76025	ob47	125°56'40"	A DP 76025	0°01'20"	218.12 A	DP 76025	
IS XVI DP 76025	PEG (40) DP 76025	ob58	288°10'20"	A DP 76025	0°01'20"	21.78 A	DP 76025	
UNMK (38) DP 76025	UNMK 83 DP 594557	ob52	306°52'30"	A DP 76025	0°01'20"	5.92 C		Class AD
UNMK 83 DP 594557	UNMK 196 DP 76025	ob77	306°52'30"	A DP 76025	0°01'20"	0.98 C		Class AD
UNMK 196 DP 76025	UNMK 197 DP 76025	ob59	306°52'30"	A DP 76025	0°01'20"	16.84 A	DP 76025	Class AD

Mark and Vector

Survey Number DP 594557

Meridional Circuit Mount Eden 2000

From	To	Code	Bearing	Adpt Surv	Bearing Correction	Distance	Adpt Surv	Class
UNMK 197 DP 76025	UNMK 82 DP 594557	ob60	306°52'30"	A DP 76025	0°01'20"	1.24 C		Class AD
UNMK 82 DP 594557	UNMK (47) DP 76025	ob76	306°52'30"	A DP 76025	0°01'20"	2.76 C		Class AD
UNMK (47) DP 76025	PEG 84 DP 594557	ob61	46°40'40"	A DP 76025	0°01'20"	1.77 C		Class AD
PEG 84 DP 594557	UNMK (48) DP 76025	ob78	46°40'40"	A DP 76025	0°01'20"	1.00 C		Class AD
UNMK (48) DP 76025	PEG 119 DP 76025	ob62	46°40'40"	A DP 76025	0°01'20"	5.03 A	DP 21906	
PEG 119 DP 76025	IS IX DP 76025	ob63	150°37'20"	A DP 76025	0°01'20"	7.07 A	DP 76025	
IS XI DP 197449	IT XII DP 197449	ob141	143°45'20"	A DP 197449	0°00'00"	92.26 A	DP 197449	
IT XII DP 197449	IT XIII DP 197449	ob147	129°33'30"	A DP 197449	0°00'00"	173.23 A	DP 197449	
IS VIIA DP 21906	IB A DP 21906	ob132	209°59'00"	A DP 21906	0°00'00"	4.02 A	DP 21906	
IB A DP 21906	PEG 112 DP 197449	ob150	46°41'00"	A DP 197449	0°00'00"	8.00 A	DP 197449	
PEG 112 DP 197449	IT XIII DP 197449	ob151	35°38'00"	A DP 197449	0°00'00"	37.58 A	DP 197449	
PEG 138 SO 543175	PEG 139 SO 543175	ob23	124°07'00"	A SO 543175	0°00'00"	13.07 A	SO 543175	Class A
PEG 139 SO 543175	PEG 140 SO 543175	ob64	131°11'00"	A SO 543175	0°00'00"	11.60 A	SO 543175	Class A
PEG 140 SO 543175	IS XI DP 197449	ob65	11°45'00"	M		37.65 M		
IT XIII DP 197449	PEG (33) DP 197449	ob137	290°05'00"	M		91.51 M		
PEG 140 SO 543175	PEG 217 SO 543175	ob66	2°13'50"	A SO 543175	0°00'00"	0.46 A	SO 543175	Class A
PEG 217 SO 543175	UNMK 77 DP 594557	ob67	2°13'50"	A SO 543175	0°00'00"	2.41 C		Class AD
UNMK 77 DP 594557	UNMK 234 SO 543175	ob72	2°13'50"	A SO 543175	0°00'00"	1.65 C		Class AD
UNMK 234 SO 543175	UNMK 233 SO 543175	ob68	144°38'00"	A SO 543175	0°00'00"	3.54 A	SO 543175	Class A
UNMK 233 SO 543175	UNMK 232 SO 543175	ob69	136°28'00"	A SO 543175	0°00'00"	10.75 A	SO 543175	Class A
UNMK 232 SO 543175	UNMK 231 SO 543175	ob70	130°29'00"	A SO 543175	0°00'00"	4.39 A	SO 543175	Class A
UNMK 231 SO 543175	UNMK 230 SO 543175	ob71	132°53'00"	A SO 543175	0°00'00"	17.04 A	SO 543175	Class A
IS VIIA DP 21906	IS VII DP 21906	ob133	229°27'30"	A DP 21906	0°00'00"	32.60 A	DP 21906	
IS VII DP 21906	IS VI DP 21906	ob152	113°42'10"	A DP 21906	0°00'00"	82.77 A	DP 21906	
IS VI DP 21906	IP VA DP 21906	ob153	119°42'40"	A DP 21906	0°00'00"	47.29 A	DP 21906	

Mark and Vector

Survey Number DP 594557

Meridional Circuit Mount Eden 2000

From	To	Code	Bearing	Adpt Surv	Bearing Correction	Distance	Adpt Surv	Class
IP VA DP 21906	PEG 119 DP 76025	ob154	46°38'40"	A DP 21906	0°00'00"	26.36 A	DP 21906	
IT XII DP 197449	UNMK 78 DP 594557	ob148	237°13'00"	C		17.01 C		
UNMK 78 DP 594557	IS 186 SO 543175	ob73	121°13'00"	C		8.18 C		
IT XIII DP 197449	PEG 79 DP 594557	ob138	219°41'00"	C		55.41 C		
PEG 79 DP 594557	IT X DP 76025	ob74	145°29'00"	C		107.81 C		
IT X DP 76025	PEG 56 DP 534030	ob16	224°17'00"	A DP 534030	0°00'00"	33.55 A	DP 534030	
PEG 56 DP 534030	Peg 58 DP 534030	ob83	339°20'10"	A DP 534030	0°00'00"	23.55 A	DP 534030	
Peg 58 DP 534030	Peg 57 DP 534030	ob84	306°50'40"	A DP 534030	0°00'00"	45.60 A	DP 534030	
Peg 57 DP 534030	IT X DP 76025	ob86	110°22'30"	A DP 534030	0°00'00"	72.79 A	DP 534030	
Peg 58 DP 534030	PEG 92 DP 594557	ob85	53°05'30"	A DP 534030	0°00'00"	20.96 A	DP 534030	
PEG 92 DP 594557	PEG 53 DP 76025	ob88	159°20'10"	A DP 534030	0°00'00"	29.41 A	DP 534030	Class A
IT I LT 82632	PEG 97 DP 594557	ob4	62°38'00"	M		31.39 M		
PEG 97 DP 594557	PEG 113 DP 594557	ob99	290°41'00"	A SO 63692	0°00'00"	21.21 A	SO 63692	Class A
IT I LT 82632	IS LXXV SO 47170	ob5	55°06'50"	A SO 47622	-0°00'40"	18.96 A	SO 47622	
IS LXXV SO 47170	IT LXXXIV SO 47170	ob90	137°15'10"	A SO 47622	-0°00'40"	124.91 A	SO 47622	
IT LXXXIV SO 47170	PEG 46 SO 47170	ob91	180°34'20"	A SO 47622	-0°00'40"	7.37 A	SO 47622	
PEG 46 SO 47170	IT IV SO 47622	ob92	319°46'20"	A SO 47622	-0°00'40"	3.87 A	SO 47622	
IT IV SO 47622	IS III SO 47622	ob95	311°06'20"	A SO 47622	-0°00'40"	94.47 A	SO 47622	
IS III SO 47622	IT I LT 82632	ob96	311°06'20"	A SO 47622	-0°00'40"	35.27 A	SO 47622	
Peg 57 DP 534030	PEG 46 SO 47170	ob87	306°50'40"	C		105.31 C		
PEG 46 SO 47170	PEG (95) SO 47170	ob93	315°36'00"	A SO 47170	-0°00'40"	117.44 A	SO 47170	
PEG (95) SO 47170	IS LXXV SO 47170	ob97	350°28'20"	A SO 47170	-0°00'40"	15.40 A	SO 47170	
PEG 46 SO 47170	PEG 96 DP 594557	ob94	41°13'20"	C		20.18 C		
PEG 96 DP 594557	PEG 97 DP 594557	ob98	315°36'00"	C		122.50 C		Class A
PEG 92 DP 594557	PEG 96 DP 594557	ob89	306°50'40"	C		155.23 C		Class A

Mark and Vector

Survey Number DP 594557

Meridional Circuit Mount Eden 2000

From	To	Code	Bearing	Adpt Surv	Bearing Correction	Distance	Adpt Surv	Class
PEG 79 DP 594557	PEG (30) DP 197449	ob75	66°22'00"	C		1.34 C		Class AD
IS III LT 82632	IS II LT 82632	ob146	126°23'00"	A LT 82632	0°00'00"	35.43 A	LT 82632	
IT I LT 82632	IT XVIII DP 61853	ob6	235°25'20"	A LT 590424	0°00'00"	268.91 A	LT 590424	
IT XVIII DP 61853	IT A SO 514032	ob100	179°39'00"	A LT 590424	0°00'00"	97.37 A	LT 590424	
IS 101 DP 594557	PEG 99 DP 594557	ob103	114°18'30"	M		10.72 M		
IS 101 DP 594557	PEG 84 DP 594557	ob104	326°51'00"	M		16.99 M		
IS 102 DP 594557	PEG 92 DP 594557	ob117	159°35'00"	M		16.81 M		
IS 102 DP 594557	PEG 50 DP 594557	ob118	155°42'30"	M		46.20 M		
IS 103 DP 594557	PEG 96 DP 594557	ob121	241°27'00"	M		9.27 M		
IS 1 SO 543175	PEG 138 SO 543175	ob129	85°08'00"	M		20.95 M		
IS 1 SO 543175	PEG 139 SO 543175	ob130	99°56'00"	M		32.18 M		
IS XI DP 197449	PEG 217 SO 543175	ob142	191°52'00"	M		37.19 M		
IS XI DP 197449	UNMK 77 DP 594557	ob143	192°32'00"	C		34.83 C		
IS 104 DP 594557	PEG 79 DP 594557	ob125	70°17'30"	M		12.63 M		
IS 101 DP 594557	UNMK 196 DP 76025	ob105	85°18'00"	C		6.12 C		
IS 101 DP 594557	UNMK 83 DP 594557	ob106	90°43'30"	C		6.88 C		
IS 101 DP 594557	UNMK 87 DP 594557	ob107	157°03'30"	C		7.86 C		
IS 101 DP 594557	UNMK 85 DP 594557	ob108	169°24'30"	C		8.04 C		
IS 101 DP 594557	UNMK 86 DP 594557	ob109	203°26'00"	C		11.35 C		
IS 101 DP 594557	UNMK 88 DP 594557	ob110	208°00'00"	C		12.43 C		
IS 101 DP 594557	UNMK 82 DP 594557	ob111	323°36'00"	C		14.10 C		
IS 101 DP 594557	UNMK 197 DP 76025	ob112	325°11'00"	C		12.92 C		
IS 101 DP 594557	UNMK (48) DP 76025	ob113	330°08'00"	C		17.19 C		
IS 101 DP 594557	UNMK (38) DP 76025	ob114	107°24'00"	C		12.17 C		

Mark and Vector

Survey Number DP 594557

Meridional Circuit Mount Eden 2000

From	To	Code	Bearing	Adpt Surv	Bearing Correction	Distance	Adpt Surv	Class
IT XII DP 197449	PEG (19) DP 197449	ob149	42°39'00"	A DP 197449	0°00'00"	7.99 A	DP 197449	
PEG (19) DP 197449	PEG (20) DP 197449	ob157	237°00'00"	A DP 197449	0°00'00"	22.00 A	DP 197449	
PEG (20) DP 197449	UNMK (191) DP 197449	ob158	237°00'00"	A DP 197449	0°00'00"	2.00 A	DP 197449	
UNMK (191) DP 197449	UNMK (222) DP 119	ob45	237°00'00"	A DP 119	0°00'00"	0.14 A	SO 543175	Class A
UNMK (222) DP 119	UNMK 223 SO 543175	ob159	237°00'00"	A SO 543175	0°00'00"	0.98 A	SO 543175	Class A
IS 101 DP 594557	UNMK (47) DP 76025	ob115	320°53'00"	C		16.77 C		

Mark Name	Mark Condition	Description
IT A SO 514032		Flush in metal / north edge of sealed crossing - 1.0m east post
PEG (20) DP 197449		Added for irreg line split from LoL CTG
UNMK (222) DP 119		DCDB
UNMK 223 SO 543175		DCDB
IP VA DP 21906	Destroyed	
IS I SO 63692	Destroyed	
IS II LT 82632	Destroyed	
IS IX DP 76025	Destroyed	
IS LXXV SO 47170	Destroyed	
IS VI DP 21906	Destroyed	
IS VII DP 21906	Destroyed	
IS XI DP 76025	Destroyed	
IS XII DP 76025	Destroyed	
IS XIII DP 76025	Destroyed	
IS XVI DP 76025	Destroyed	
IT II SO 56185	Destroyed	
IT III DP 55511	Destroyed	
IT LXXXIV SO 47170	Destroyed	
IT X DP 76025	Destroyed	
IT XIV DP 76025	Destroyed	
PEG (31) DP 197449	Destroyed	
PEG (32) DP 197449	Destroyed	
PEG (40) DP 76025	Destroyed	
PEG (95) SO 47170	Destroyed	
PEG 121 DP 76025	Destroyed	

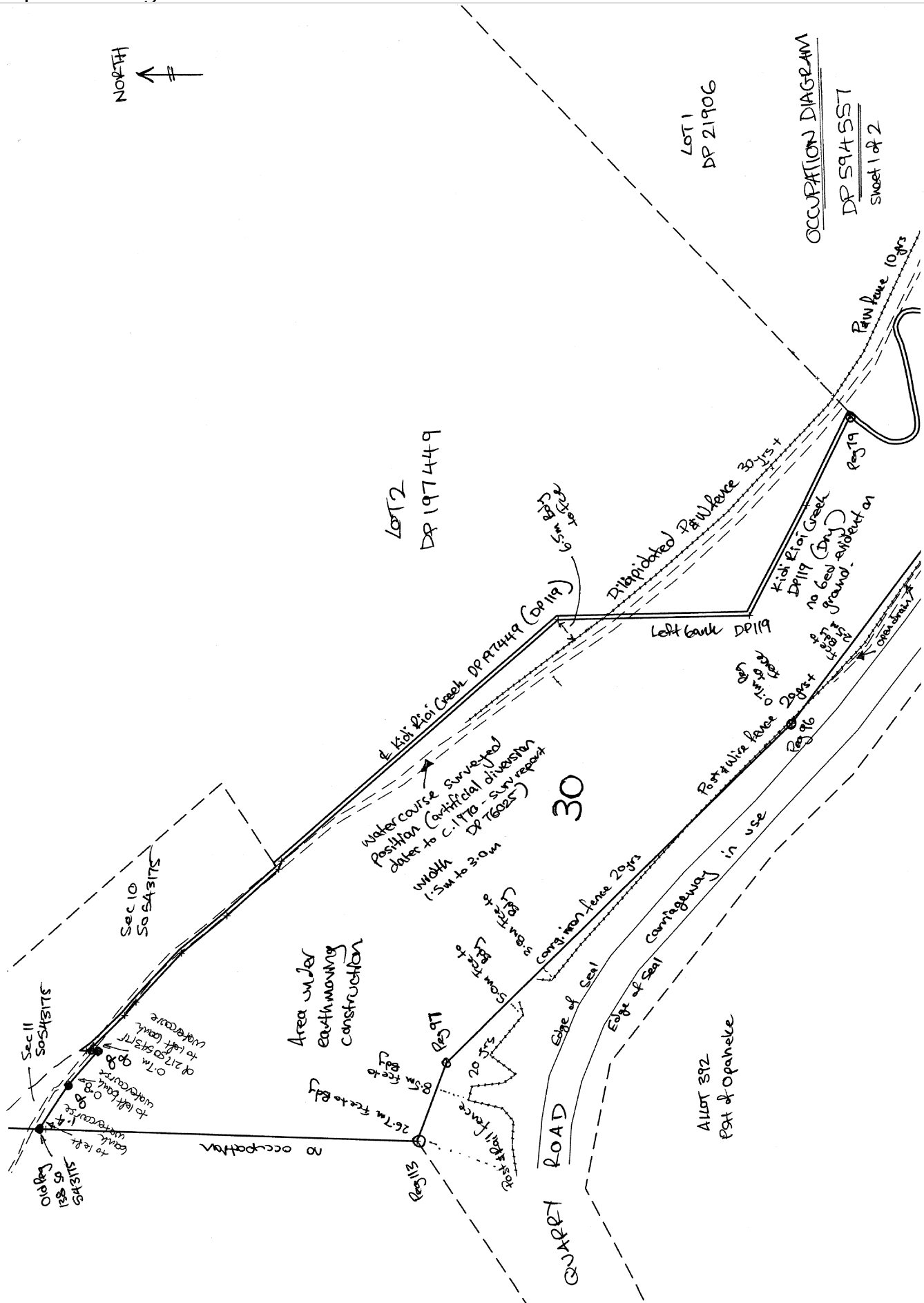
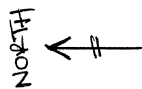
Mark and Vector

Survey Number DP 594557
Meridional Circuit Mount Eden 2000

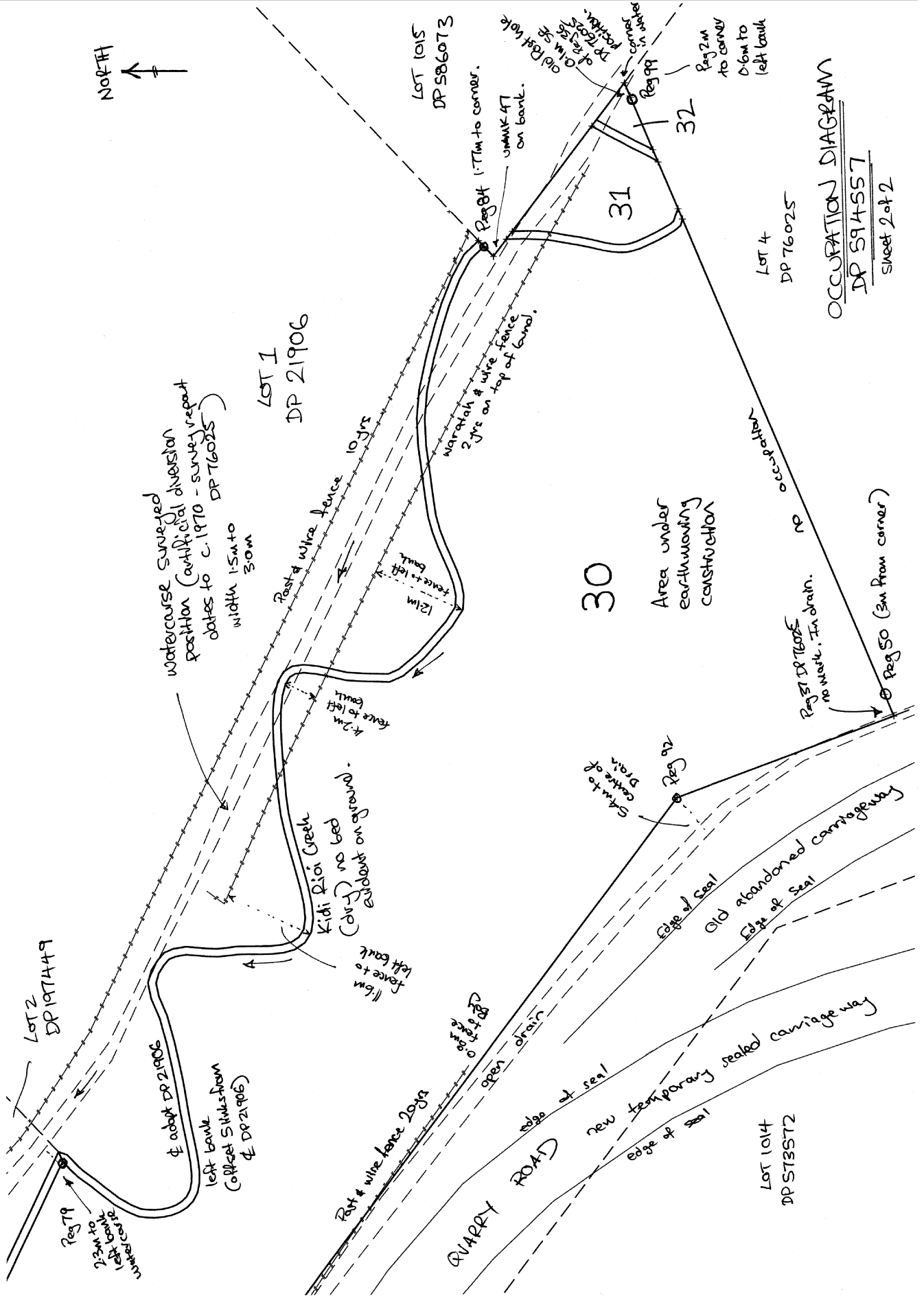
Mark Name	Mark Condition	Description
PEG 329 LT 590424	Destroyed	
PEG 50 DP 76025	Destroyed	
PEG 51 DP 76025	Destroyed	
PEG 52 DP 76025	Destroyed	
PEG 53 DP 76025	Destroyed	
PEG 56 DP 534030	Destroyed	
Peg 57 DP 534030	Destroyed	
Peg 58 DP 534030	Destroyed	

*** End of Report ***

Occupation Diagram



Occupation Diagram

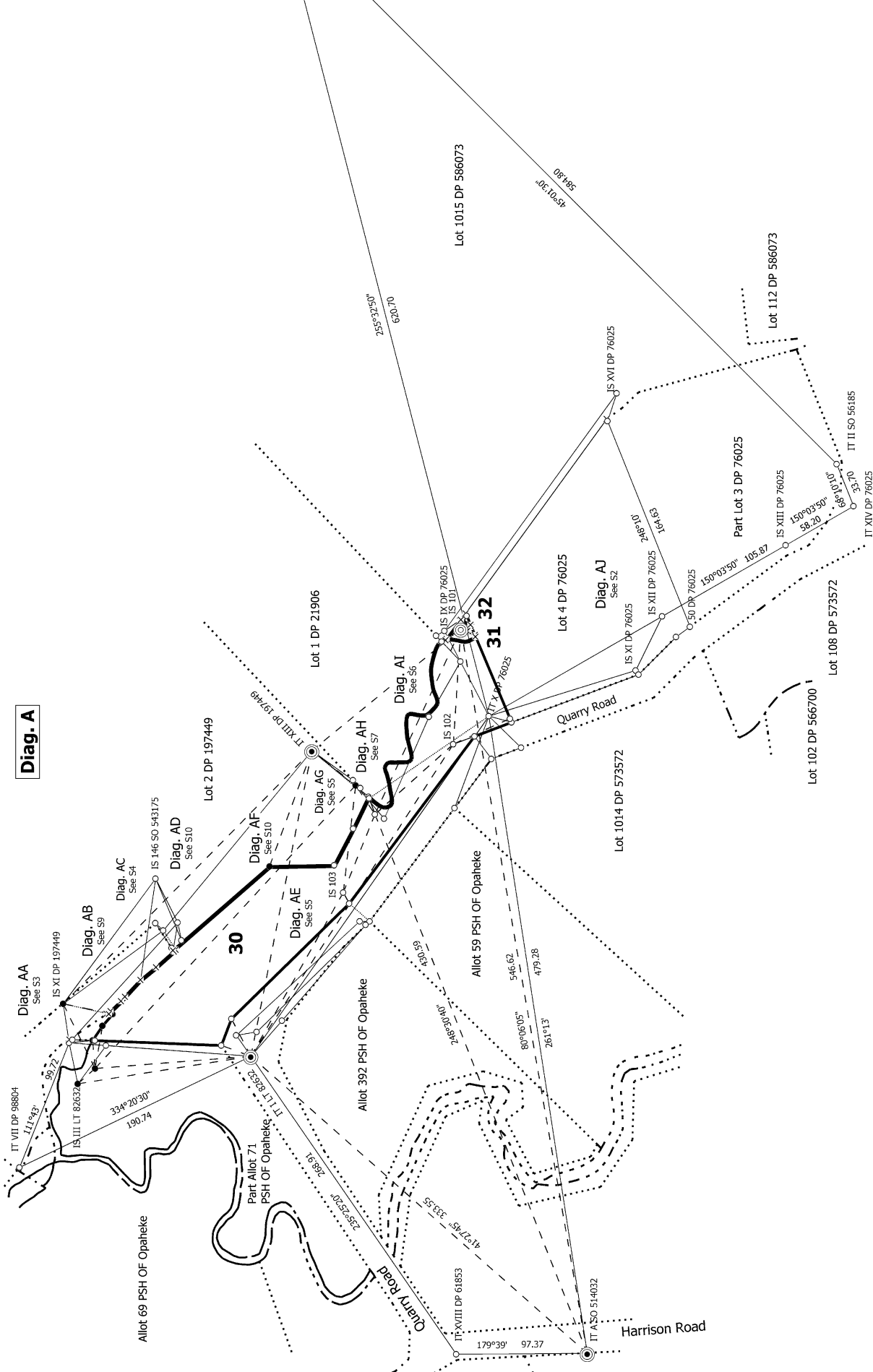


OCCUPATION DIAGRAM
 DP 594557
 Sheet 2 of 2



Fitzgerald Road
Curry Hills Road
IT III DP 55511

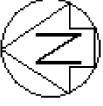
Diag. A



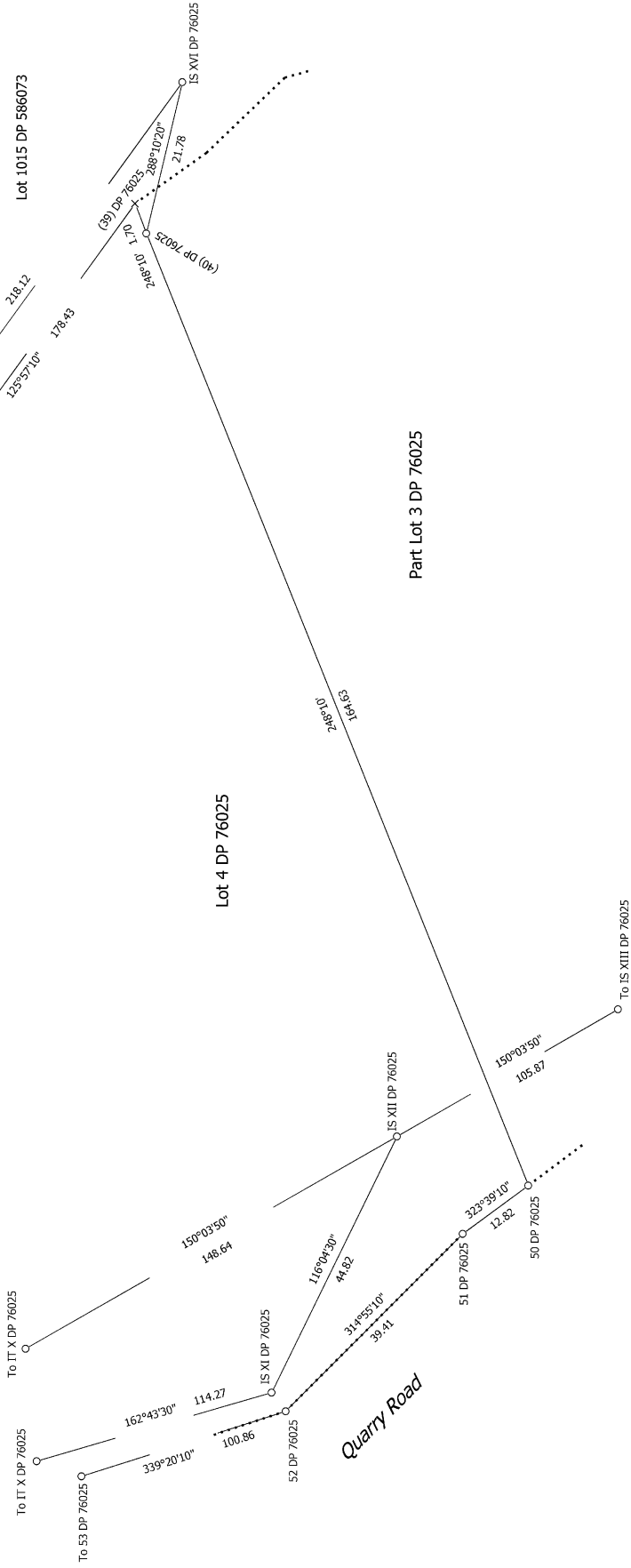
S 1/10

File: 7769

<p>Land District: North Auckland</p>	<p>Lots 30, 31 & 32 being Parts Allot 245 PSH OF Opaheke, Section 1 SO 63692 and Part Lot 2 DP 21906</p>	<p>Surveyor: Grant John Wackrow Firm: Yeomans Survey Solutions Ltd (Auct Date of Survey: 28/09/2023</p>	<p>Record of Survey DP 594557 Deposited on: 16/02/2024</p>
<p>Digitally Generated Plan Generated on: 28/02/2024 1:07pm Page 13 of 26</p>			

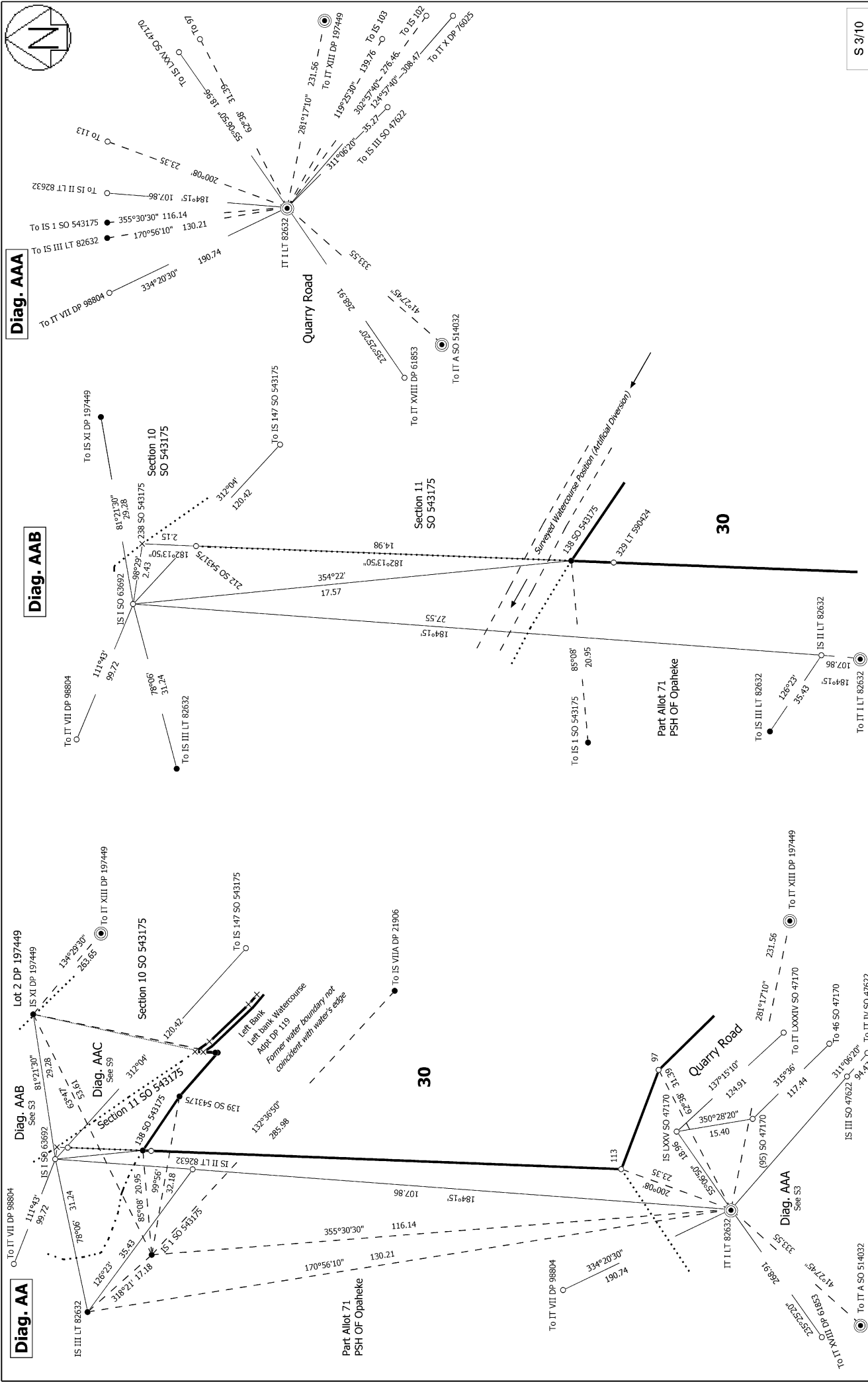


Diag. AJ

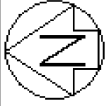


S 2/10

<p>Land District: North Auckland</p> <p>Digitally Generated Plan</p> <p>Generated on: 28/02/2024 1:07pm Page 14 of 26</p>	<p>Lots 30, 31 & 32 being Parts Allot 245 PSH OF Opaheke, Section 1 SO 63692 and Part Lot 2 DP 21906</p>	<p>Surveyor: Grant John Wackrow</p> <p>Firm: Yeomans Survey Solutions Ltd (Auct</p> <p>Date of Survey: 28/09/2023</p>	<p>Record of Survey</p> <p>DP 594557</p> <p>Deposited on: 16/02/2024</p>
--	---	---	--

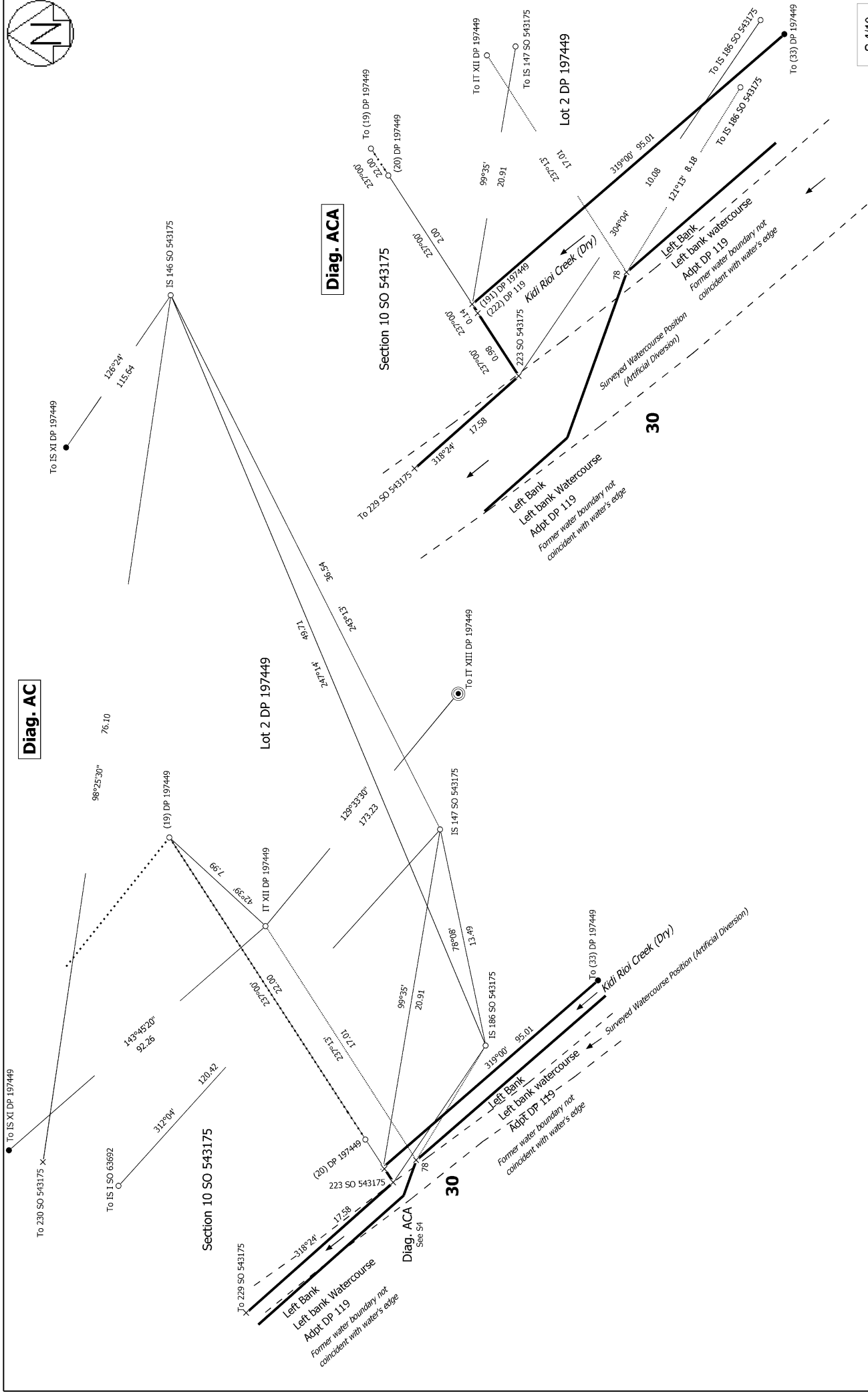


S 3/10



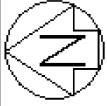
Diag. AC

Diag. ACA



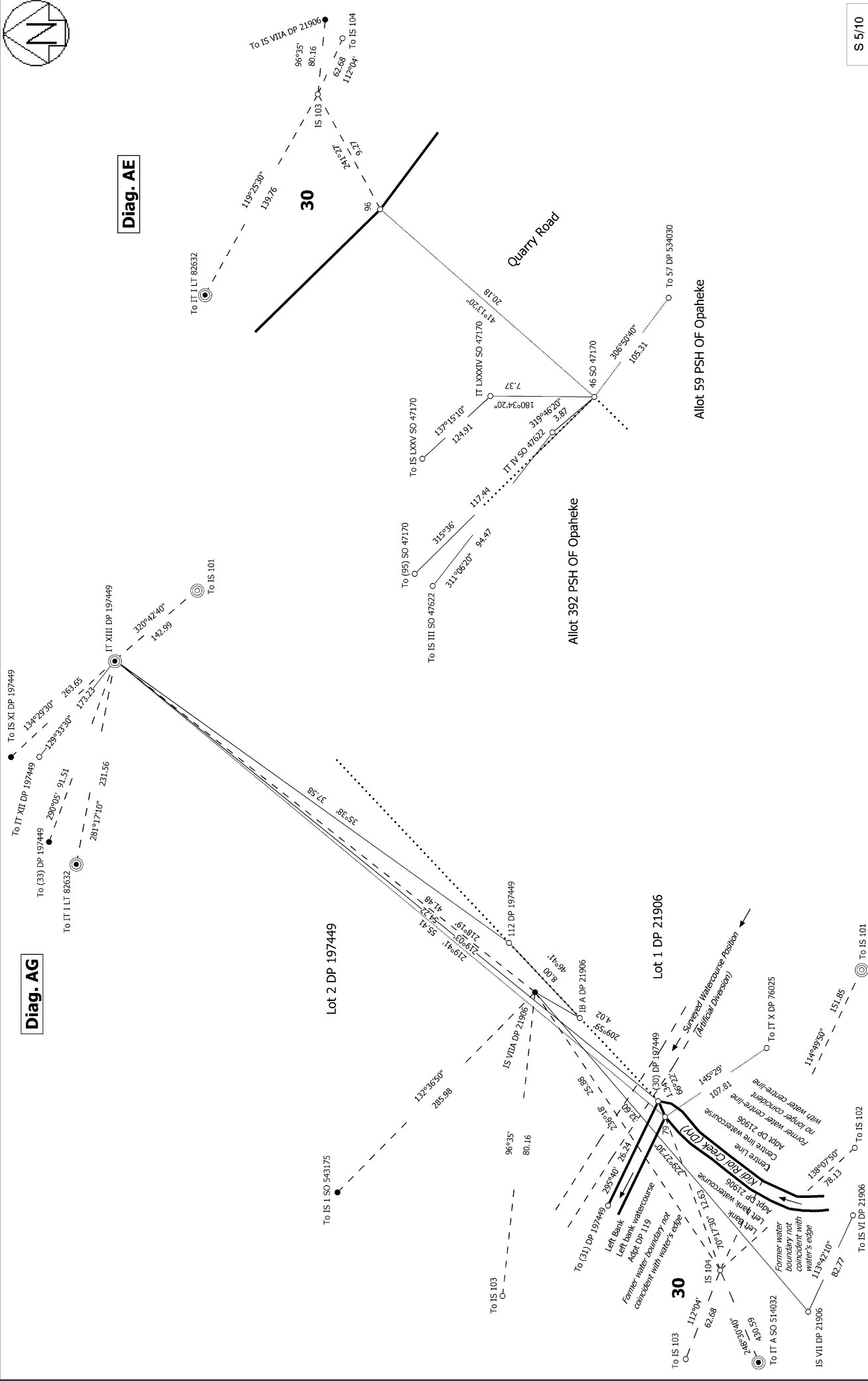
S 4/10

<p>Land District: North Auckland</p> <p>Digitally Generated Plan</p> <p>Generated on: 28/02/2024 1:07pm Page 16 of 26</p>	<p>Lots 30, 31 & 32 being Parts Allot 245 PSH OF Opaheke, Section 1 SO 63692 and Part Lot 2 DP 21906</p>	<p>Surveyor: Grant John Wackrow</p> <p>Firm: Yeomans Survey Solutions Ltd (Auch)</p> <p>Date of Survey: 28/09/2023</p>	<p>Record of Survey</p> <p>DP 594557</p> <p>Deposited on: 16/02/2024</p>
--	---	--	--



Diag. AG

Diag. AE



S 5/10

Land District: North Auckland

Lots 30, 31 & 32 being Parts Allot 245 PSH OF Opaheke, Section 1 SO 63692 and Part Lot 2 DP 21906

Surveyor: Grant John Wackrow
Firm: Yeomans Survey Solutions Ltd (Auch
Date of Survey: 28/09/2023

Record of Survey
DP 594557

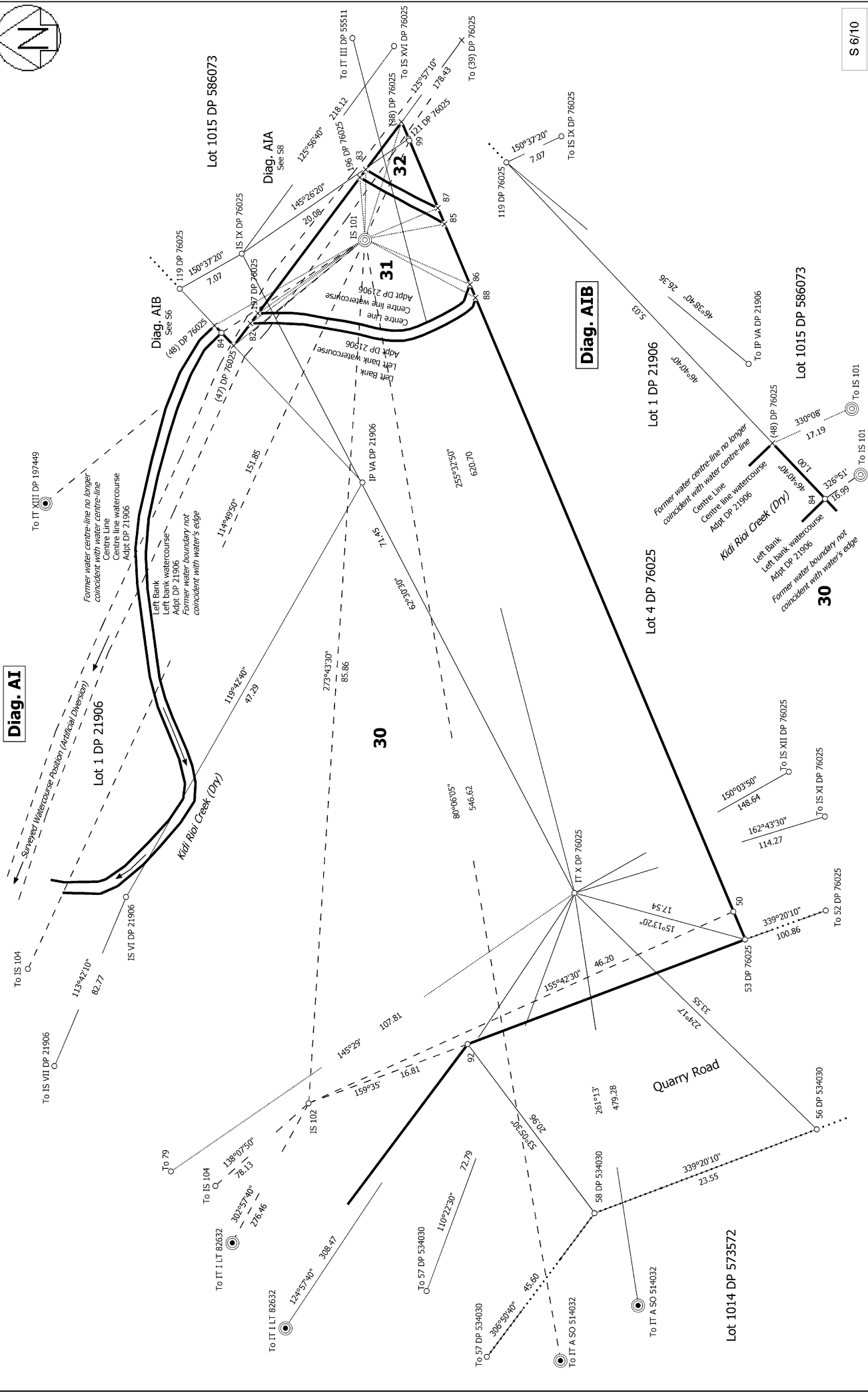
Digitally Generated Plan

Generated on: 28/02/2024 1:07pm Page 17 of 26

Deposited on: 16/02/2024



Diag. AI



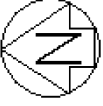
S 6/10

Land District: North Auckland
Digitally Generated Plan
 Generated on: 28/02/2024 1:07pm Page 18 of 26

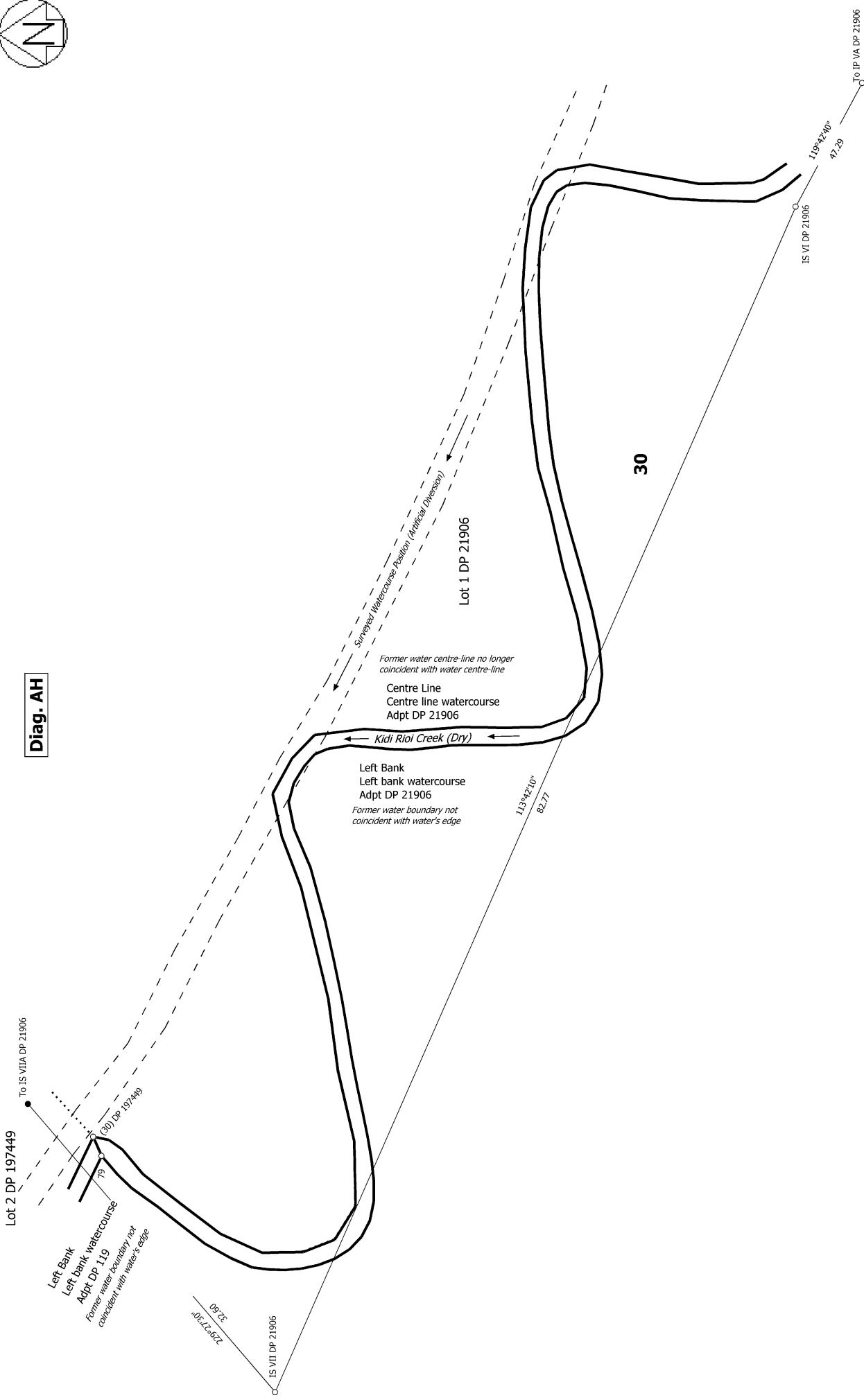
Lots 30, 31 & 32 being Parts Allot 245 PSH OF Opaheke, Section 1 SO 63892 and Part Lot 2 DP 21906

Surveyor: Grant John Wackrow
 Firm: Yeomans Survey Solutions Ltd (Auch)
 Date of Survey: 28/09/2023

Record of Survey
DP 594557
 Deposited on: 16/02/2024

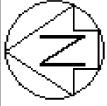


Diag. AH



S 7/10

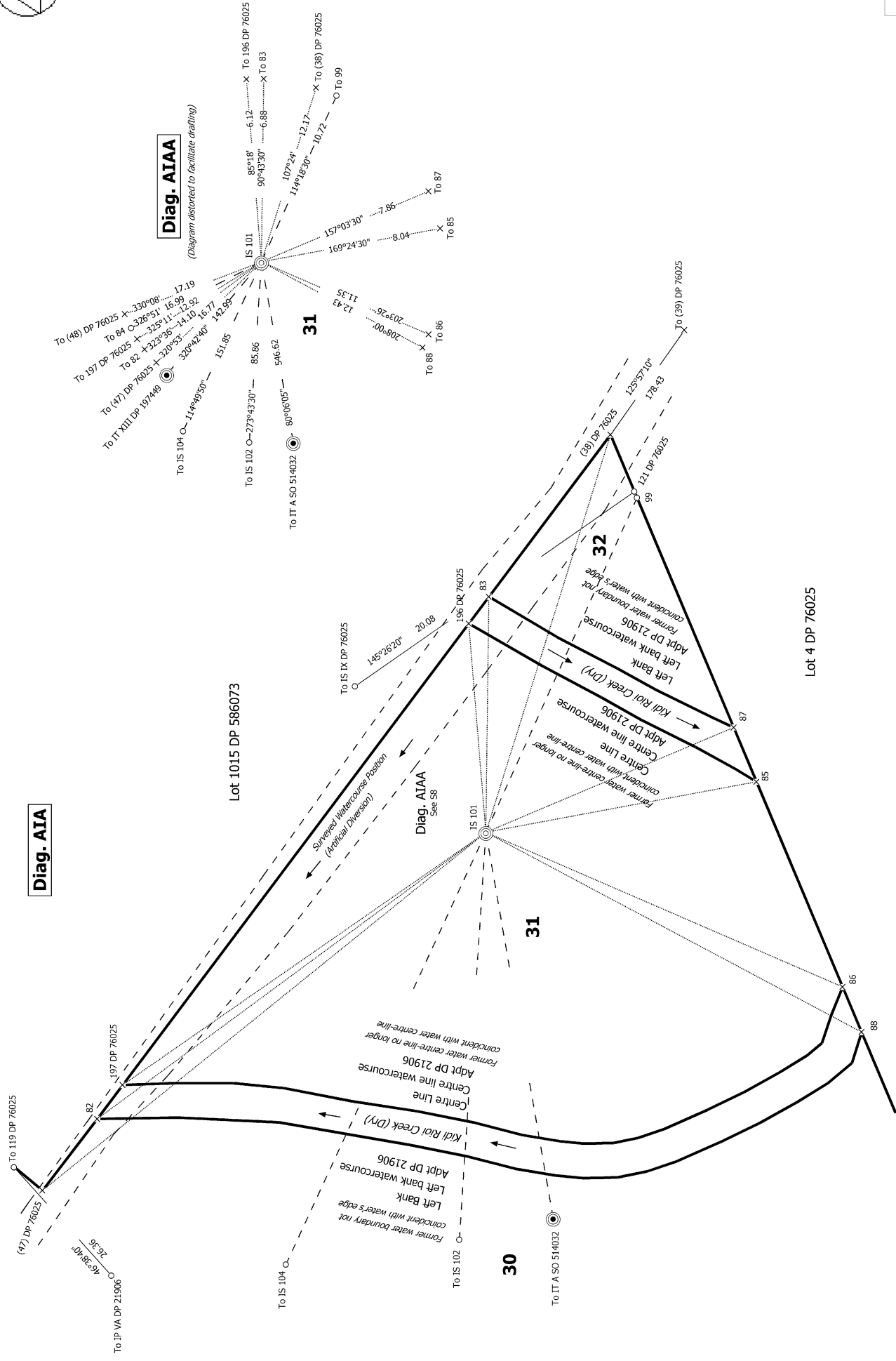
<p>Land District: North Auckland</p> <p>Digitally Generated Plan</p> <p>Generated on: 28/02/2024 1:07pm Page 19 of 26</p>	<p>Lots 30, 31 & 32 being Parts Allot 245 PSH OF Opaheke, Section 1 SO 63692 and Part Lot 2 DP 21906</p>	<p>Surveyor: Grant John Wackrow</p> <p>Firm: Yeomans Survey Solutions Ltd (Auch)</p> <p>Date of Survey: 28/09/2023</p>	<p>Record of Survey DP 594557</p> <p>Deposited on: 16/02/2024</p>
--	---	--	--



Diag. AIA

Diag. AIAA

(Diagram distorted to facilitate drafting)



S 8/10

Land District: North Auckland

Digitally Generated Plan
Generated on: 28/02/2024 1:07pm Page 20 of 26

Lots 30, 31 & 32 being Parts Allot 245 PSH OF Opaheke, Section 1 SO 63892 and Part Lot 2 DP 21906

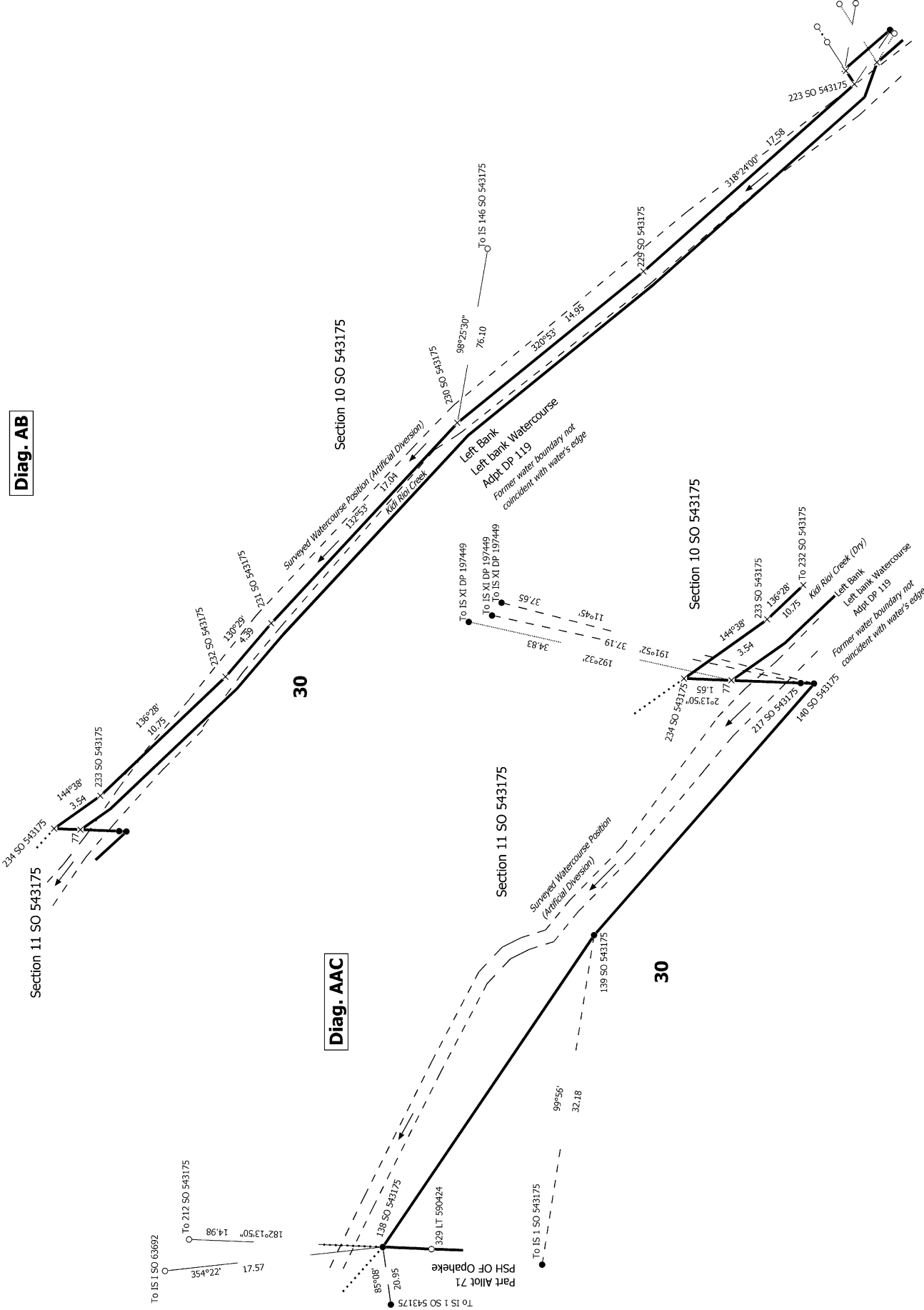
Surveyor: Grant John Wackrow
Firm: Yeomans Survey Solutions Ltd (Auch)
Date of Survey: 28/09/2023

Record of Survey
DP 594557
Deposited on: 16/02/2024



S 9/10

Diag. AB



Diag. AAC

Land District: North Auckland

Digitally Generated Plan

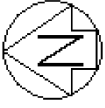
Generated on: 28/02/2024 1:07pm Page 21 of 26

Lots 30, 31 & 32 being Parts Allot 245 PSH OF Opaheke, Section 1 SO 63692 and Part Lot 2 DP 21906

Surveyor: Grant John Wackrow
Firm: Yeomans Survey Solutions Ltd (Auch)
Date of Survey: 28/09/2023

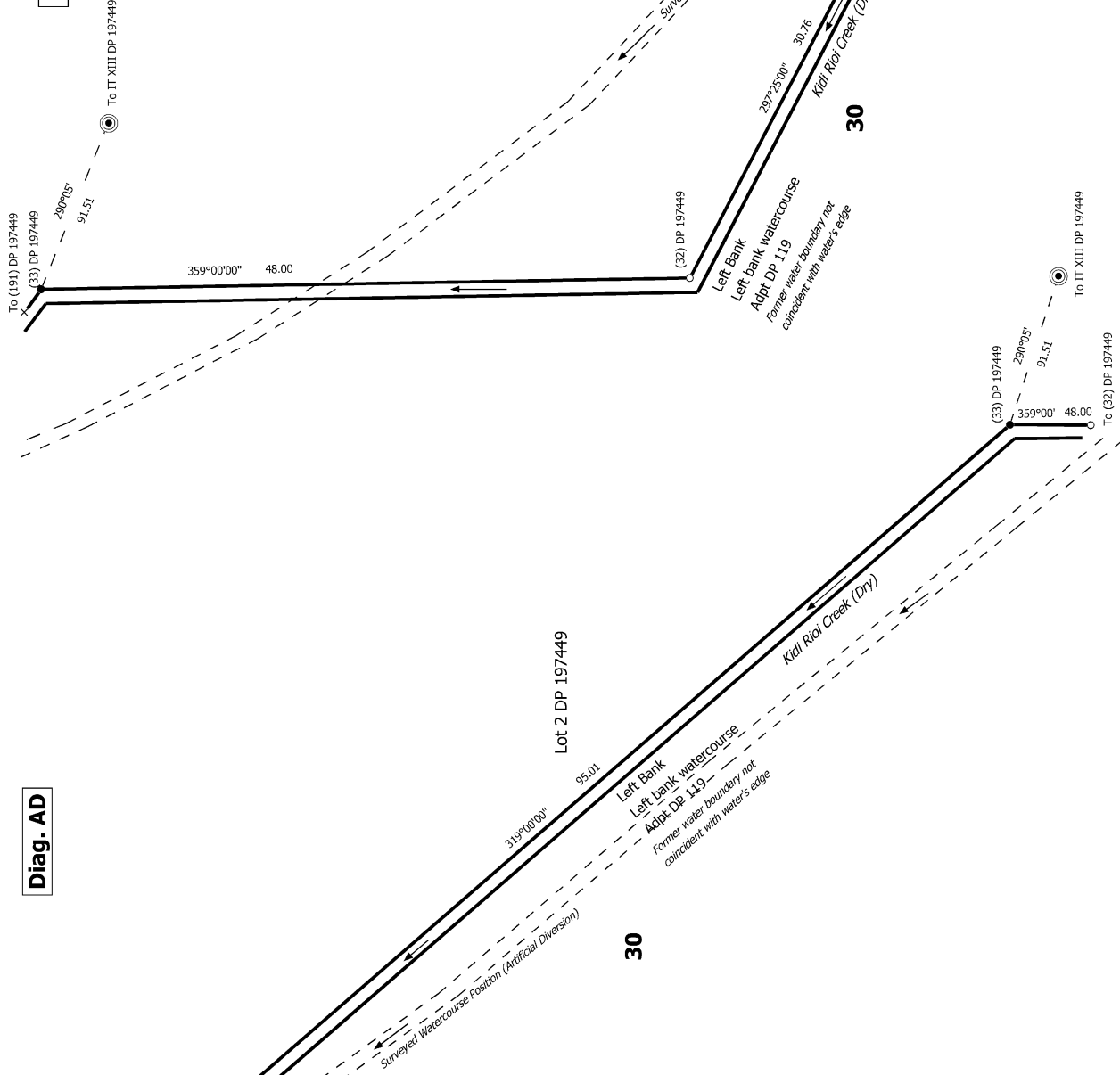
Record of Survey
DP 594557

Deposited on: 16/02/2024



Section 10
SO 543175
To (191) DP 197449
Left Bank Watercourse
Left Bank
Adpt DP 119
Former water boundary not
coincident with water's edge

Diag. AD



Diag. AF

S 10/10

Land District: North Auckland
Digitally Generated Plan
Generated on: 28/02/2024 1:07pm Page 22 of 26

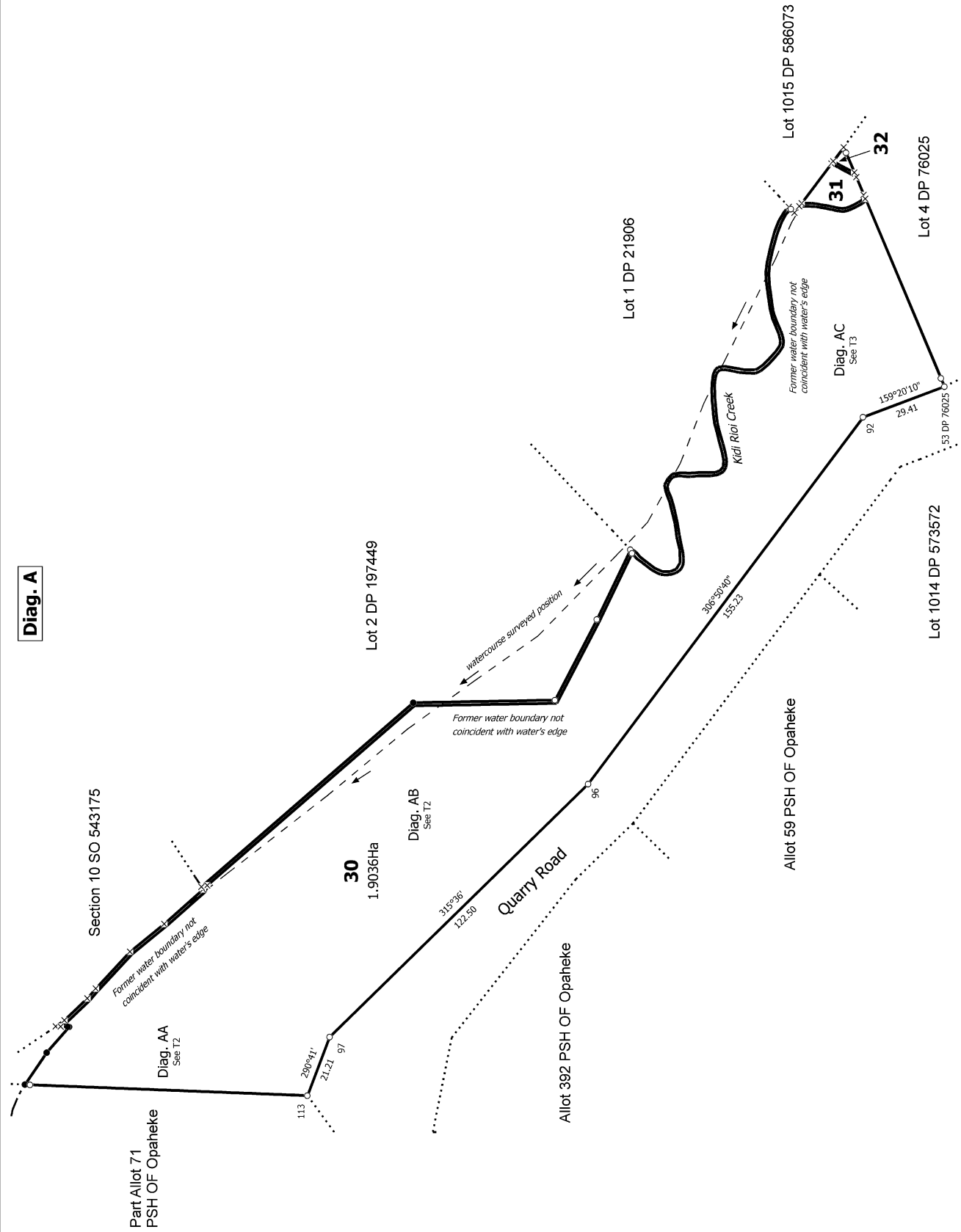
Lots 30, 31 & 32 being Parts Allot 245 PSH OF Opaheke, Section 1 SO 63692 and Part Lot 2 DP 21906

Surveyor: Grant John Wackrow
Firm: Yeomans Survey Solutions Ltd (Auch
Date of Survey: 28/09/2023

**Record of Survey
DP 594557**
Deposited on: 16/02/2024



Diag. A



File: 7769

T 1/4

Land District: North Auckland

Digitally Generated Plan

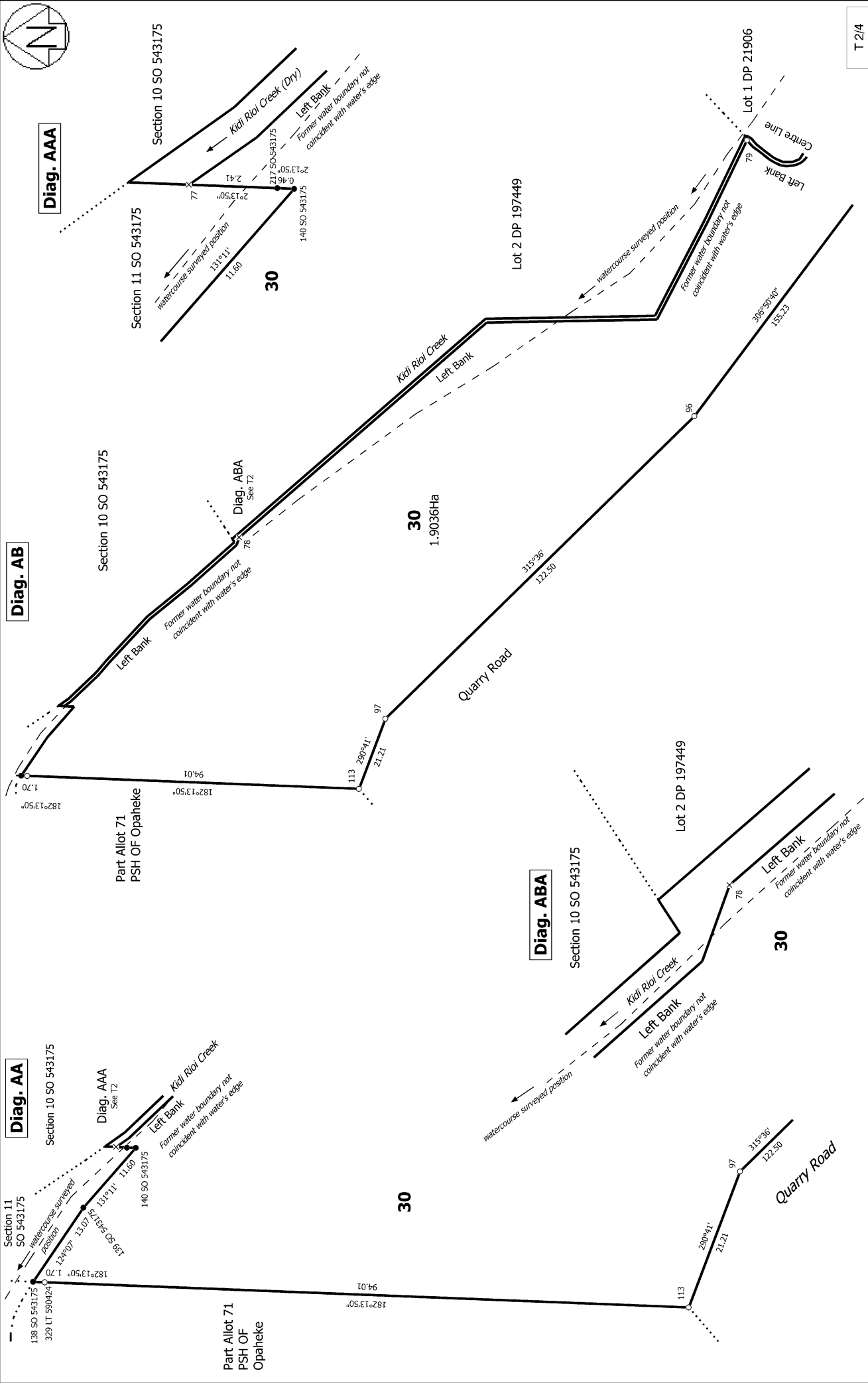
Generated on: 28/02/2024 1:07pm Page 23 of 26

Lots 30, 31 & 32 being Parts Allot 245 PSH OF Opaheke, Section 1 SO 63692 and Part Lot 2 DP 21906

Surveyor: Grant John Wackrow
Firm: Yeomans Survey Solutions Ltd (Auch
Date of Survey: 28/09/2023

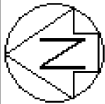
Record of Survey
DP 594557

Deposited on: 16/02/2024



T 2/4

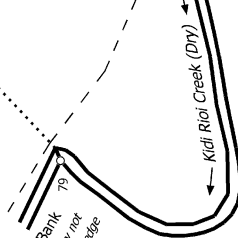
<p>Land District: North Auckland</p> <p>Digitally Generated Plan</p> <p>Generated on: 28/02/2024 1:07pm Page 24 of 26</p>	<p>Lots 30, 31 & 32 being Parts Allot 245 PSH OF Opaheke, Section 1 SO 63692 and Part Lot 2 DP 21906</p>	<p>Surveyor: Grant John Wackrow</p> <p>Firm: Yeomans Survey Solutions Ltd (Auct)</p> <p>Date of Survey: 28/09/2023</p>	<p>Record of Survey</p> <p>DP 594557</p> <p>Deposited on: 16/02/2024</p>
--	---	--	---



Diag. AC

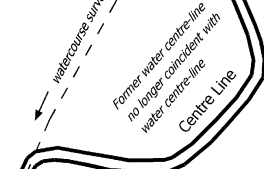
Lot 2 DP 197449

Left Bank
Former water boundary not
coincident with water's edge



Lot 1 DP 21906

Left Bank
Former water boundary not
coincident with water's edge



Watercourse surveyed position
Former water centre-line
no longer coincident with
water centre-line

30
1.9036Ha

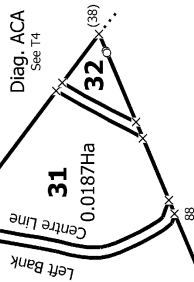
Quarry Road

306°35'40"
155.23

Lot 1015 DP 586073

Left Bank
Centre Line

31
0.0187Ha



Diag. ACA
See T4

(38) DP 76025

Lot 4 DP 76025

0°39'
10511.444

159°20'10"
29.41

50
53 DP 76025
10511.444

T 3/4

Land District: North Auckland

Digitally Generated Plan

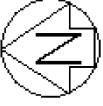
Generated on: 28/02/2024 1:07pm Page 25 of 26

**Lots 30, 31 & 32 being Parts Allot 245 PSH OF Opaheke, Section 1 SO 63892
and Part Lot 2 DP 21906**

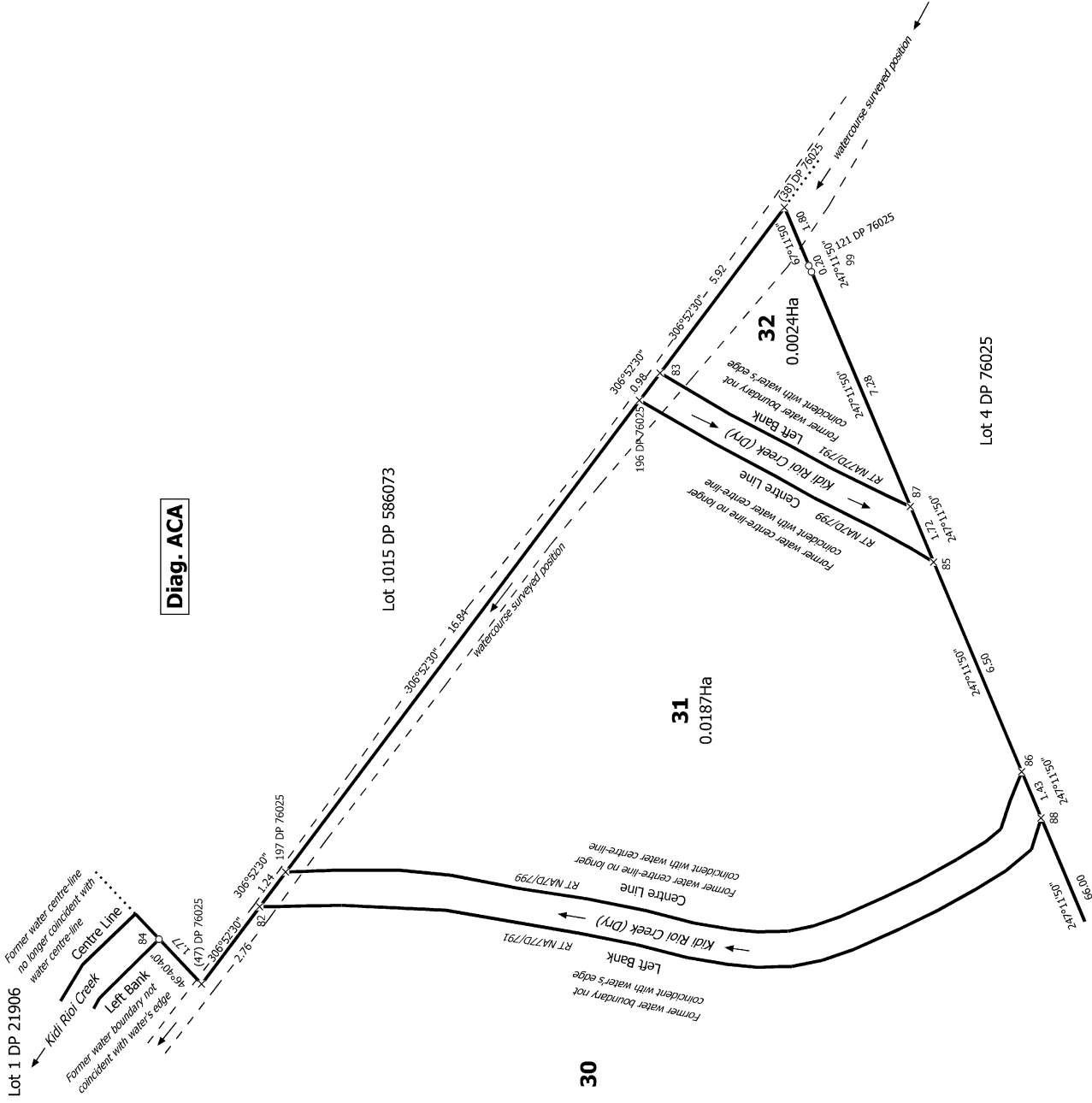
Surveyor: Grant John Wackrow
Firm: Yeomans Survey Solutions Ltd (Auch
Date of Survey: 28/09/2023

**Record of Survey
DP 594557**

Deposited on: 16/02/2024



Diag. ACA



T 4/4

Lots 30, 31 & 32 being Parts Allot 245 PSH OF Opaheke, Section 1 SO 63692 and Part Lot 2 DP 21906

Surveyor: Grant John Wackrow
 Firm: Yeomans Survey Solutions Ltd (Auch)
 Date of Survey: 28/09/2023

Record of Survey
 DP 594557
 Deposited on: 16/02/2024