

# Record of Survey - DP 593814

**Survey Number** DP 593814  
**Surveyor Reference** D18117 Somerville St  
**Surveyor** Leon Robert Hallett  
**Survey Firm** Paterson Pitts Limited Partnership (Dunedin)  
**Surveyor Declaration** I Leon Robert Hallett, being a licensed cadastral surveyor, certify that--  
 (a) this dataset provided by me and its related survey are accurate, correct and in accordance with the Cadastral Survey Act 2002 and Cadastral Survey Rules 2021; and  
 (b) the survey was undertaken by me or under my personal direction.  
 Declared on 23 Nov 2023 04:16 PM

## Survey Details

<b>Dataset Description</b>	Unit Development on Lot 3 DP 519079		
<b>Purpose</b>	Standard Unit Plan		
<b>Status</b>	Deposited	<b>Type</b>	Survey
<b>Land District</b>	Otago	<b>Survey Class</b>	Class A
<b>Meridional Circuit</b>	North Taieri 2000	<b>Vertical Datum</b>	None

## Survey Dates

<b>Surveyed Date</b>	13/07/2023	<b>Certified Date</b>	23/11/2023
<b>Submitted Date</b>	23/11/2023 16:16:13	<b>Survey Approval Date</b>	24/11/2023
<b>Deposit Date</b>	23/01/2024		

## Referenced Surveys

Survey Number	Land District	Bearing Correction
DP 519079	Otago	0°00'00"

## Territorial Authorities

Dunedin City

## Comprised In

RT 814465

## Created Parcels

Parcels	Parcel Intent	Area	RT Reference
Principal Unit 1 Deposited Plan 593814	Principal Unit		1143190
Principal Unit 2 Deposited Plan 593814	Principal Unit		1143191
Principal Unit 3 Deposited Plan 593814	Principal Unit		1143192
Principal Unit 4 Deposited Plan 593814	Principal Unit		1143193
Principal Unit 5 Deposited Plan 593814	Principal Unit		1143194
Principal Unit 6 Deposited Plan 593814	Principal Unit		1143195
Accessory Unit 1A Deposited Plan 593814	Accessory Unit		1143190
Accessory Unit 2A Deposited Plan 593814	Accessory Unit		1143191
Accessory Unit 3A Deposited Plan 593814	Accessory Unit		1143192
Accessory Unit 4A Deposited Plan 593814	Accessory Unit		1143193
Accessory Unit 5A Deposited Plan 593814	Accessory Unit		1143194

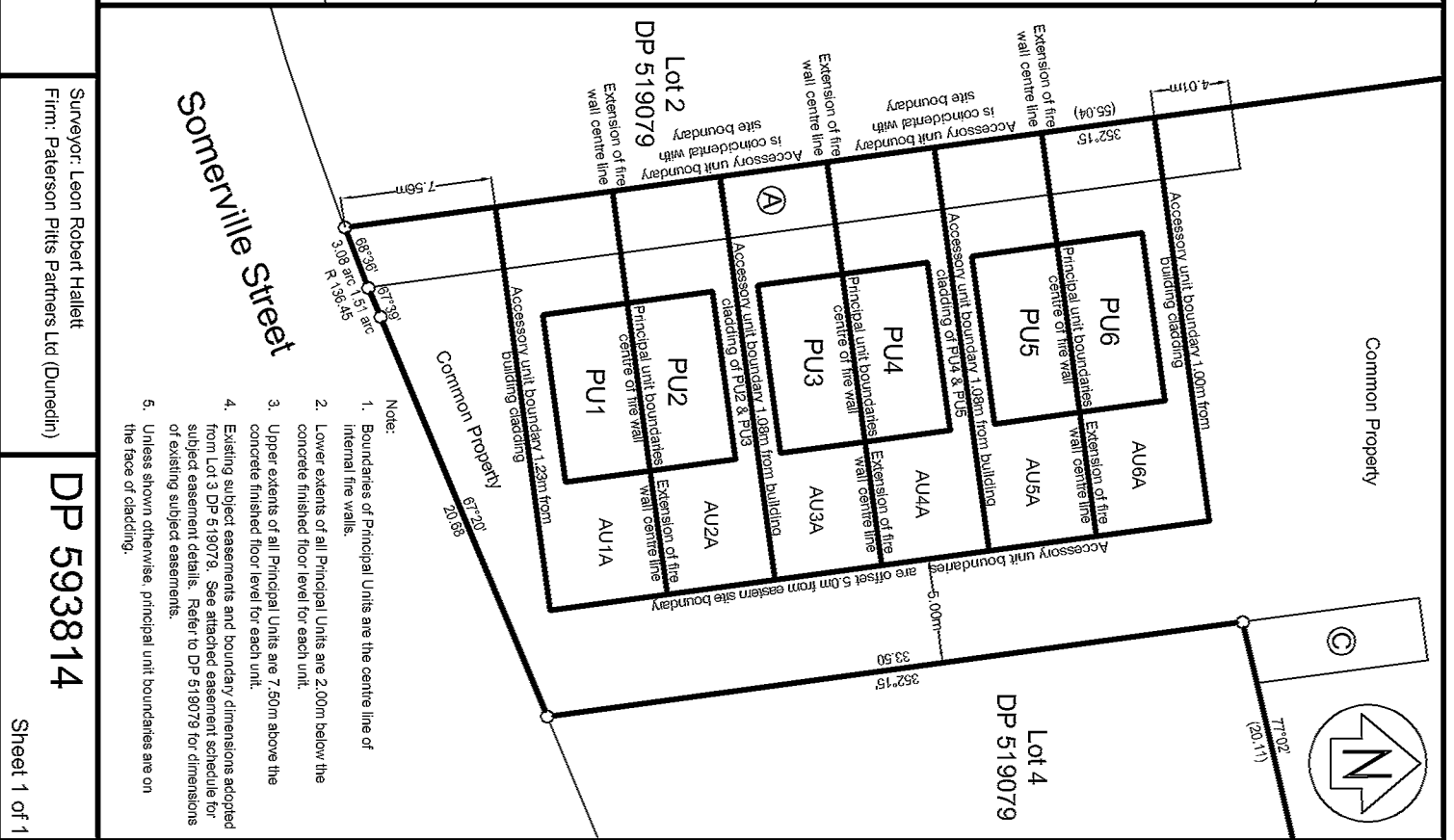
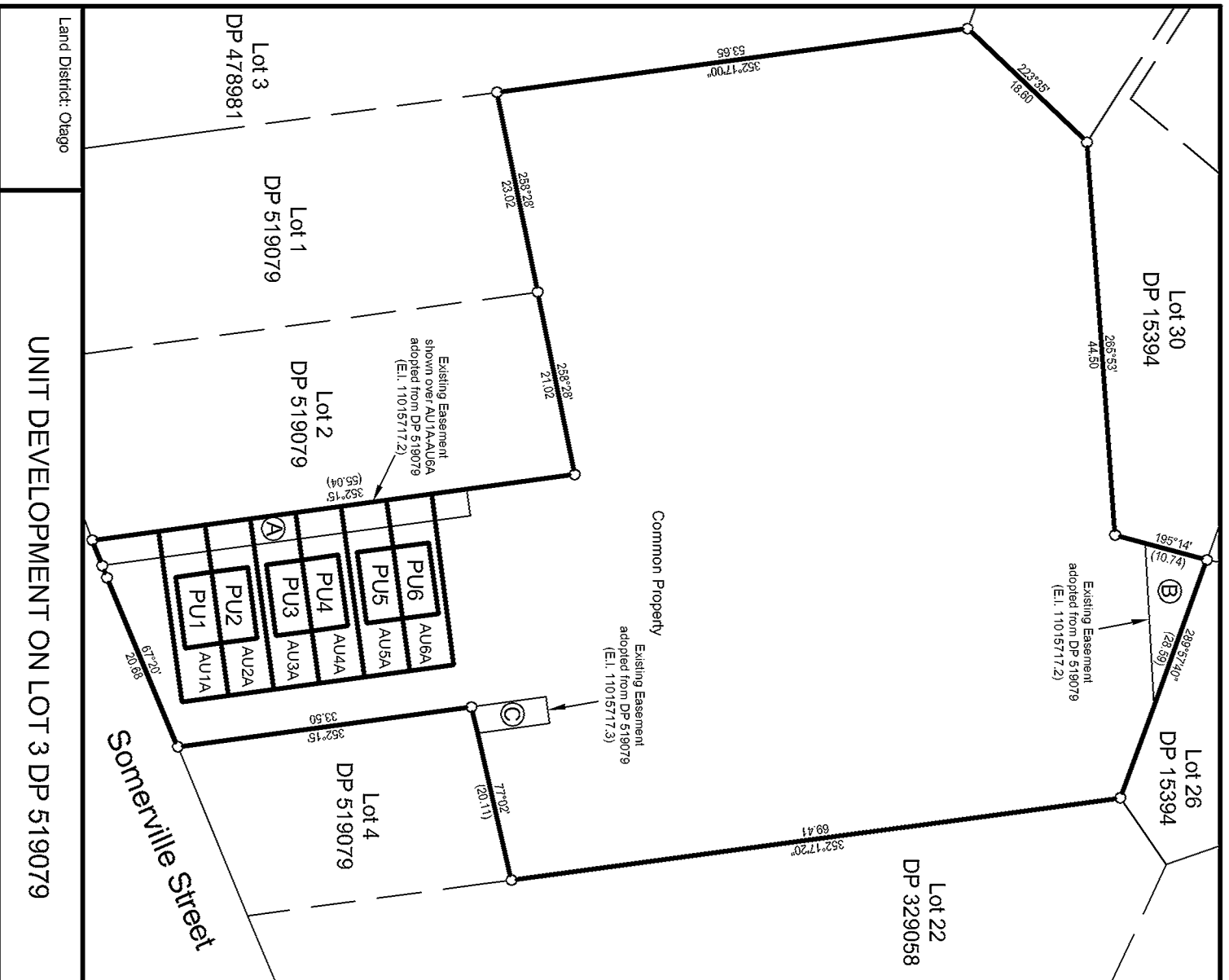


# Record of Survey - DP 593814

---

## Created Parcels

Parcels	Parcel Intent	Area	RT Reference
Accessory Unit 6A Deposited Plan 593814	Accessory Unit		1143195
<b>Total Area</b>		<hr/> 0.0000 Ha	



- Note:
1. Boundaries of Principal Units are the centre line of internal fire walls.
  2. Lower extents of all Principal Units are 2.00m below the concrete finished floor level for each unit.
  3. Upper extents of all Principal Units are 7.50m above the concrete finished floor level for each unit.
  4. Existing subject easements and boundary dimensions adopted from Lot 3 DP 519079. See attached easement schedule for subject easement details. Refer to DP 519079 for dimensions of existing subject easements.
  5. Unless shown otherwise, principal unit boundaries are on the face of cladding.

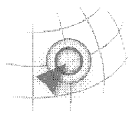
Land District: Otago

UNIT DEVELOPMENT ON LOT 3 DP 519079

Surveyor: Leon Robert Hallett  
 Firm: Paterson Pitts Partners Ltd (Dunedin)

DP 593814

**SUPPORTING DOCUMENT**

<b>Plan Type &amp; No:</b>	Land Transfer – LT 593814	<b>PATERSONPITTSGROUP</b>  Your Land Professionals www.ppgroup.co.nz 0800 PPGROUP 
<b>Lodging Surveyor:</b>	Leon Robert Hallett	
<b>Firm:</b>	Paterson Pitts Group (Dunedin)	
<b>Surveyors Reference:</b>	D18117 Somerville Street	
<b>RMA Reference:</b>	SUB-2022-17	
<b>Survey Description:</b>	Unit Development on Lot 3 DP 519079	

**SCHEDULE OF EXISTING EASEMENTS**

PURPOSE	SHOWN	SERVIENT TENEMENT (Burdened Land)	DOMINANT TENEMENT (Benefitted Land)	CREATED BY
Right to drain water	C on DP 519079	Lot 3 DP 519079	Lot 4 DP 519079	E.I. 11015717.3
Right to convey foul sewer and stormwater	G - R on DP 26236	Lot 16 DP 26236	Bal CT 2C/1183	E.C. 939303.7

**SCHEDULE OF EXISTING EASEMENTS IN GROSS**

PURPOSE	SHOWN	SERVIENT TENEMENT (Burdened Land)	CREATED BY
Right to drain water	A on DP 519079	Lot 3 DP 519079	E.I. 11015717.2
Right to drain sewage	B on DP 519079	Lot 3 DP 519079	E.I. 11015717.2
Right to drain water			