

# Record of Survey - DP 592996

**Survey Number** DP 592996  
**Surveyor Reference** H20230031 - MATAPIRO OLIVES  
**Surveyor** Karl Robert Carew  
**Survey Firm** Development Nous Limited  
**Surveyor Declaration** I Karl Robert Carew, being a licensed cadastral surveyor, certify that--  
 (a) this dataset provided by me and its related survey are accurate, correct and in accordance with the Cadastral Survey Act 2002 and Cadastral Survey Rules 2021; and  
 (b) the survey was undertaken by me or under my personal direction.  
 Declared on 18 Oct 2023 04:42 PM

## Survey Details

**Dataset Description** LOTS 1 AND 2 BEING SUBDIVISION OF LOTS 3 AND 4 DP 28621  
**Purpose** LT Subdivision  
**Status** Deposited **Type** Survey  
**Land District** Hawkes Bay **Survey Class** Class B  
**Meridional Circuit** Hawkes Bay 2000 **Vertical Datum** None

## Survey Dates

**Surveyed Date** 29/06/2023 **Certified Date** 18/10/2023  
**Submitted Date** 18/10/2023 16:42:49 **Survey Approval Date** 19/10/2023  
**Deposit Date** 19/10/2023

## Referenced Surveys

Survey Number	Land District	Bearing Correction
DP 24175	Hawkes Bay	0°00'00"
DP 15448	Hawkes Bay	0°00'00"
DP 20784	Hawkes Bay	0°00'00"
DP 28621	Hawkes Bay	0°00'00"
DP 397783	Hawkes Bay	0°00'00"
SO 4583	Hawkes Bay	0°00'00"
SO 4584	Hawkes Bay	0°00'00"

## Territorial Authorities

Hastings District

## Comprised In

RT HBY2/742  
 RT HBY2/743

## Created Parcels

Parcels	Parcel Intent	Area	RT Reference
Area A Deposited Plan 592996	Easement		
Area B Deposited Plan 592996	Easement		
Area C Deposited Plan 592996	Easement		
Area D Deposited Plan 592996	Easement		

# Record of Survey - DP 592996

## Created Parcels

Parcels	Parcel Intent	Area	RT Reference
Area E Deposited Plan 592996	Easement		
Area F Deposited Plan 592996	Easement		
Area G Deposited Plan 592996	Easement		
Area H Deposited Plan 592996	Easement		
Area I Deposited Plan 592996	Easement		
Area J Deposited Plan 592996	Easement		
Area K Deposited Plan 592996	Easement		
Area L Deposited Plan 592996	Easement		
Area M Deposited Plan 592996	Easement		
Area N Deposited Plan 592996	Easement		
Area O Deposited Plan 592996	Easement		
Area P Deposited Plan 592996	Easement		
Area Q Deposited Plan 592996	Easement		
Area R Deposited Plan 592996	Easement		
Area S Deposited Plan 592996	Easement		
Area T Deposited Plan 592996	Easement		
Area U Deposited Plan 592996	Easement		
Area V Deposited Plan 592996	Easement		
Area W Deposited Plan 592996	Easement		
Lot 1 Deposited Plan 592996	Fee Simple Title	2.0290 Ha	1139760
Lot 2 Deposited Plan 592996	Fee Simple Title	25.6400 Ha	1139761
Area X Deposited Plan 592996	Easement		
Area Y Deposited Plan 592996	Easement		
Area Z Deposited Plan 592996	Easement		
Area AA Deposited Plan 592996	Easement		
Area AB Deposited Plan 592996	Easement		
Area AC Deposited Plan 592996	Easement		
Area AD Deposited Plan 592996	Easement		
Area AE Deposited Plan 592996	Easement		
Area AF Deposited Plan 592996	Easement		
Area AG Deposited Plan 592996	Easement		
Area AH Deposited Plan 592996	Easement		
Area AI Deposited Plan 592996	Easement		
Area AJ Deposited Plan 592996	Easement		
Area AK Deposited Plan 592996	Easement		
Area AL Deposited Plan 592996	Easement		
Area AM Deposited Plan 592996	Easement		
Area AN Deposited Plan 592996	Easement		
<b>Total Area</b>		<b>27.6690 Ha</b>	

# Mark and Vector

Survey Number DP 592996

Meridional Circuit Hawkes Bay 2000

From	To	Code	Bearing	Adpt Surv	Bearing Correction	Distance	Adpt Surv	Class
SS 380 SO 4584	IT I DP 15448	ob0	291°36'38"	A DP 24175	0°00'00"	833.70 A	DP 24175	
IT I DP 15448	SS 379 SO 4584	ob1	291°36'38"	A DP 15448	0°00'00"	156.44 A	DP 15448	
SS 379 SO 4584	IT III DP 15448	ob2	291°22'10"	A DP 20784	0°00'00"	505.52 A	DP 20784	
IT III DP 15448	IT IV DP 28621	ob3	292°08'30"	A DP 28621	0°00'00"	102.13 A	DP 28621	
IT IV DP 28621	IT III DP 28621	ob10	292°08'30"	A DP 28621	0°00'00"	188.04 A	DP 28621	
IT III DP 28621	SS 378 SO 4583	ob11	292°08'30"	M		206.65 M		
SS 378 SO 4583	SS 377 SO 4583	ob4	291°21'07"	M		188.39 M		
SS 377 SO 4583	IT XV SO 5348	ob7	291°21'07"	A DP 28621	0°00'00"	99.28 A	DP 28621	
IT XV SO 5348	IT VIII DP 15448	ob8	297°14'20"	A DP 15448	0°00'00"	657.91 A	DP 15448	
IT VIII DP 15448	SS 373 SO 4583	ob9	297°23'00"	A DP 15448	0°00'00"	499.50 A	DP 15448	
IT III DP 28621	IT 1 DP 592996	ob12	201°57'40"	M		87.42 M		
IT 1 DP 592996	IT 2 DP 592996	ob17	216°17'10"	M		76.71 M		
IT 2 DP 592996	IT 3 DP 592996	ob19	307°50'40"	M		166.30 M		
IT 3 DP 592996	SS 378 SO 4583	ob25	8°37'30"	M		120.12 M		
IT III DP 28621	IS V DP 28621	ob13	208°45'30"	A DP 28621	0°00'00"	146.05 A	DP 28621	
IS V DP 28621	IT II DP 28621	ob27	164°37'00"	A DP 28621	0°00'00"	257.08 A	DP 28621	
IT II DP 28621	IT I DP 28621	ob30	271°21'20"	A DP 28621	0°00'00"	279.77 A	DP 28621	
IT I DP 28621	IT IX DP 20784	ob31	283°01'40"	A DP 28621	0°00'00"	121.67 A	DP 28621	
IT IX DP 20784	IS VIII DP 20784	ob33	281°58'40"	A DP 28621	0°00'00"	179.10 A	DP 28621	
IS VIII DP 20784	IT VII DP 20784	ob34	296°41'00"	A DP 20784	0°00'00"	134.07 A	DP 20784	
IT VII DP 20784	IS VI DP 20784	ob35	27°19'10"	A DP 20784	0°00'00"	240.97 A	DP 20784	
IS VI DP 20784	IT XV SO 5348	ob36	30°28'20"	A DP 20784	0°00'00"	247.15 A	DP 20784	
IT III DP 28621	PEG (4) DP 28621	ob14	157°43'00"	M		21.83 M		
IT III DP 28621	BS 6 DP 592996	ob15	219°08'00"	M		16.45 M		
IT III DP 28621	BS 5 DP 592996	ob16	183°38'00"	M		16.51 M		
SS 378 SO 4583	PEG (8) DP 28621	ob5	149°48'00"	M		27.75 M		
IT 2 DP 592996	PEG 11 DP 592996	ob20	288°23'00"	M		16.23 M		
IT 2 DP 592996	PEG 12 DP 592996	ob21	319°06'00"	M		85.52 M		
IT 3 DP 592996	PEG 13 DP 592996	ob26	120°58'00"	M		4.61 M		
IS V DP 28621	PEG 14 DP 592996	ob28	34°50'00"	A DP 28621	0°00'00"	9.24 A	DP 28621	
IS V DP 28621	PEG 15 DP 592996	ob29	196°50'00"	A DP 28621	0°00'00"	7.59 A	DP 28621	
IT I DP 28621	POST (17) DP 28621	ob32	111°01'00"	A DP 28621	0°00'00"	80.43 A	DP 28621	
BS 5 DP 592996	PEG (4) DP 28621	ob39	111°45'00"	A DP 28621	0°00'00"	10.04 A	DP 28621	

# Mark and Vector

Survey Number DP 592996

Meridional Circuit Hawkes Bay 2000

From	To	Code	Bearing	Adpt Surv	Bearing Correction	Distance	Adpt Surv	Class
BS 5 DP 592996	UNMK (18) DP 28621	ob40	291°45'00"	A DP 28621	0°00'00"	8.04 A	DP 28621	Class B
UNMK (18) DP 28621	BS 6 DP 592996	ob49	291°45'00"	A DP 28621	0°00'00"	2.00 A	DP 28621	Class B
BS 6 DP 592996	UNMK (19) DP 28621	ob37	291°45'00"	A DP 28621	0°00'00"	2.00 A	DP 28621	Class B
UNMK (19) DP 28621	PEG 7 DP 592996	ob51	291°45'00"	A DP 28621	0°00'00"	157.17 C		Class B
PEG 7 DP 592996	PEG (8) DP 28621	ob53	291°45'00"	A DP 28621	0°00'00"	20.71 C		Class B
SS 378 SO 4583	PEG 7 DP 592996	ob6	133°39'00"	M		45.87 M		
BS 5 DP 592996	UNMK (20) DP 28621	ob41	207°00'00"	A DP 28621	0°00'00"	91.94 A	DP 28621	Class B
UNMK (20) DP 28621	UNMK (21) DP 28621	ob54	207°00'00"	A DP 28621	0°00'00"	1.01 A	DP 28621	Class B
UNMK (21) DP 28621	PEG 10 DP 592996	ob55	207°00'00"	A DP 28621	0°00'00"	55.58 C		Class B
PEG 10 DP 592996	UNMK (22) DP 28621	ob56	207°00'00"	A DP 28621	0°00'00"	62.66 C		Class B
UNMK (22) DP 28621	UNMK (23) DP 28621	ob58	207°00'00"	A DP 28621	0°00'00"	1.00 A	DP 28621	Class B
UNMK (23) DP 28621	UNMK (24) DP 28621	ob59	207°00'00"	A DP 28621	0°00'00"	221.22 A	DP 28621	Class B
UNMK (24) DP 28621	UNMK (25) DP 28621	ob60	296°55'00"	A DP 28621	0°00'00"	8.01 A	DP 28621	Class B
UNMK (25) DP 28621	POST (17) DP 28621	ob61	296°55'00"	A DP 28621	0°00'00"	1.97 A	DP 28621	Class B
IT 2 DP 592996	PEG 14 DP 592996	ob22	30°16'00"	M		26.00 M		
IT 2 DP 592996	PEG 15 DP 592996	ob23	36°29'00"	M		9.47 M		
BS 6 DP 592996	UNMK (26) DP 28621	ob38	206°53'30"	A DP 28621	0°00'00"	93.55 A	DP 28621	Class B
UNMK (26) DP 28621	UNMK (27) DP 28621	ob62	206°53'30"	A DP 28621	0°00'00"	1.01 A	DP 28621	Class B
UNMK (27) DP 28621	PEG 14 DP 592996	ob64	206°53'30"	A DP 28621	0°00'00"	26.20 A	DP 28621	Class B
PEG 14 DP 592996	PEG 15 DP 592996	ob46	206°45'00"	A DP 28621	0°00'00"	16.62 A	DP 28621	Class B
PEG 15 DP 592996	BD 9 DP 592996	ob47	207°03'10"	A DP 28621	0°00'00"	10.79 C		Class B
BD 9 DP 592996	UNMK (28) DP 28621	ob66	207°03'10"	A DP 28621	0°00'00"	5.77 C		Class B
UNMK (28) DP 28621	UNMK (29) DP 28621	ob68	207°03'10"	A DP 28621	0°00'00"	57.21 A	DP 28621	Class B
UNMK (29) DP 28621	UNMK (30) DP 28621	ob69	207°03'10"	A DP 28621	0°00'00"	1.00 A	DP 28621	Class B

# Mark and Vector

Survey Number DP 592996

Meridional Circuit Hawkes Bay 2000

From	To	Code	Bearing	Adpt Surv	Bearing Correction	Distance	Adpt Surv	Class
UNMK (30) DP 28621	UNMK (31) DP 28621	ob71	207°03'10"	A DP 28621	0°00'00"	148.48 A	DP 28621	Class B
UNMK (31) DP 28621	POST (17) DP 28621	ob73	207°03'10"	A DP 28621	0°00'00"	71.88 A	DP 28621	Class B
IT 2 DP 592996	BD 9 DP 592996	ob24	160°00'00"	M		2.12 M		
PEG 11 DP 592996	PEG 12 DP 592996	ob43	325°42'30"	C		72.05 C		Class B
PEG 12 DP 592996	PEG 13 DP 592996	ob44	296°08'00"	C		79.51 C		Class B
PEG 13 DP 592996	PEG 7 DP 592996	ob45	27°50'20"	C		101.19 C		Class B
PEG (8) DP 28621	UNMK (32) DP 28621	ob42	209°39'30"	A DP 28621	0°00'00"	134.17 A	DP 28621	Class B
UNMK (32) DP 28621	UNMK (33) DP 28621	ob74	209°39'30"	A DP 28621	0°00'00"	1.01 A	DP 28621	Class B
UNMK (33) DP 28621	UNMK (34) DP 28621	ob76	209°39'30"	A DP 28621	0°00'00"	227.01 A	DP 28621	Class B
UNMK (34) DP 28621	UNMK (35) DP 28621	ob78	209°39'30"	A DP 28621	0°00'00"	1.01 A	DP 28621	Class B
UNMK (35) DP 28621	PEG (36) DP 28621	ob80	209°39'30"	A DP 28621	0°00'00"	97.21 A	DP 28621	Class B
PEG (36) DP 28621	PEG (37) DP 20784	ob82	101°09'00"	A DP 20784	0°00'00"	11.44 A	DP 28621	Class B
PEG (37) DP 20784	POST (38) DP 28621	ob83	101°01'00"	A DP 28621	0°00'00"	22.98 A	DP 28621	
POST (38) DP 28621	POST (39) DP 28621	ob85	108°58'00"	A DP 28621	0°00'00"	102.10 A	DP 28621	
POST (39) DP 28621	POST (40) DP 28621	ob86	55°04'00"	A DP 28621	0°00'00"	4.09 A	DP 28621	
POST (40) DP 28621	UNMK (41) DP 28621	ob87	102°36'00"	A DP 28621	0°00'00"	64.29 A	DP 28621	
UNMK (41) DP 28621	POST (17) DP 28621	ob88	102°36'00"	A DP 28621	0°00'00"	2.18 A	DP 28621	Class B
PEG (37) DP 20784	PEG (42) DP 20784	ob84	210°38'30"	A DP 20784	0°00'00"	293.72 A	DP 20784	Class B
PEG (42) DP 20784	POST (43) DP 20784	ob90	210°35'50"	A DP 20784	0°00'00"	259.23 A	DP 20784	Class B
POST (43) DP 20784	UNMK (44) DP 397783	ob91	210°36'50"	A DP 20784	0°00'00"	167.18 A	DP 397783	Class B
UNMK (44) DP 397783	PEG (46) DP 20784	ob92	210°36'50"	A DP 20784	0°00'00"	2.00 A	DP 397783	Class B
PEG (46) DP 20784	IS XI DP 20784	ob93	7°30'00"	A DP 20784	0°00'00"	9.17 A	DP 20784	
IS XI DP 20784	IS XII DP 20784	ob95	274°30'40"	A DP 20784	0°00'00"	266.51 A	DP 20784	
IS XII DP 20784	IT XVIII DP 15448	ob96	258°10'40"	A DP 20784	0°00'00"	363.84 A	DP 20784	
IT XVIII DP 15448	PEG XXX DP 15448	ob97	254°05'40"	A DP 15448	0°00'00"	259.80 A	DP 15448	

# Mark and Vector

Survey Number DP 592996

Meridional Circuit Hawkes Bay 2000

From	To	Code	Bearing	Adpt Surv	Bearing Correction	Distance	Adpt Surv	Class
PEG XXX DP 15448	PEG XXXII DP 15448	ob98	95°38'30"	A DP 15448	0°00'00"	225.00 A	DP 15448	
PEG XXXII DP 15448	PEG XXXIII DP 15448	ob99	86°08'00"	A DP 15448	0°00'00"	567.08 A	DP 15448	
PEG XXXIII DP 15448	PEG XXXIV DP 15448	ob100	76°37'30"	A DP 15448	0°00'00"	440.60 A	DP 15448	
PEG XXXIV DP 15448	PEG XXXV DP 15448	ob101	85°25'00"	A DP 15448	0°00'00"	140.73 A	DP 15448	
PEG XXXV DP 15448	PEG XXXVI DP 15448	ob102	121°01'50"	A DP 15448	0°00'00"	349.71 A	DP 15448	
PEG XXXVI DP 15448	PEG XXXVII DP 15448	ob103	152°02'40"	A DP 15448	0°00'00"	129.86 A	DP 15448	
PEG XXXVII DP 15448	PEG XXXVIII DP 15448	ob104	246°18'40"	A DP 15448	0°00'00"	132.65 A	DP 15448	
PEG XXXVIII DP 15448	IT XV DP 15448	ob105	86°31'30"	A DP 15448	0°00'00"	181.39 A	DP 15448	
IT XV DP 15448	IS IV DP 20784	ob106	8°13'00"	A DP 20784	0°00'00"	130.15 A	DP 20784	
IS IV DP 20784	IT III DP 20784	ob107	320°01'40"	A DP 20784	0°00'00"	406.65 A	DP 20784	
IT III DP 20784	PEG VIIIA DP 28621	ob108	273°18'00"	A DP 28621	0°00'00"	284.02 A	DP 28621	
PEG VIIIA DP 28621	PEG (47) DP 28621	ob109	30°37'00"	A DP 28621	0°00'00"	419.85 A	DP 28621	Class B
PEG (47) DP 28621	UNMK (48) DP 28621	ob111	30°37'00"	A DP 28621	0°00'00"	11.07 A	DP 28621	Class B
UNMK (48) DP 28621	UNMK (24) DP 28621	ob112	329°16'30"	A DP 28621	0°00'00"	73.50 A	DP 28621	Class B
UNMK (26) DP 28621	UNMK (49) DP 28621	ob63	102°34'50"	A DP 28621	0°00'00"	1.87 A	DP 28621	Class B
UNMK (49) DP 28621	UNMK (20) DP 28621	ob113	102°34'50"	A DP 28621	0°00'00"	8.27 A	DP 28621	Class B
UNMK (27) DP 28621	UNMK (50) DP 28621	ob65	102°34'50"	A DP 28621	0°00'00"	1.87 A	DP 28621	Class B
UNMK (50) DP 28621	UNMK (21) DP 28621	ob115	102°34'50"	A DP 28621	0°00'00"	8.27 A	DP 28621	Class B
UNMK (18) DP 28621	UNMK (49) DP 28621	ob50	207°00'00"	A DP 28621	0°00'00"	93.27 A	DP 28621	Class B
UNMK (49) DP 28621	UNMK (50) DP 28621	ob114	207°00'00"	A DP 28621	0°00'00"	1.01 A	DP 28621	Class B
UNMK (29) DP 28621	UNMK (51) DP 28621	ob70	111°53'20"	A DP 28621	0°00'00"	1.77 A	DP 28621	Class B
UNMK (51) DP 28621	UNMK (22) DP 28621	ob117	111°53'20"	A DP 28621	0°00'00"	8.04 A	DP 28621	Class B
UNMK (30) DP 28621	UNMK (52) DP 28621	ob72	111°53'20"	A DP 28621	0°00'00"	1.77 A	DP 28621	Class B
UNMK (52) DP 28621	UNMK (23) DP 28621	ob119	111°53'20"	A DP 28621	0°00'00"	8.04 A	DP 28621	Class B
UNMK (50) DP 28621	UNMK 53 DP 592996	ob116	207°00'00"	A DP 28621	0°00'00"	53.98 C		Class B

# Mark and Vector

Survey Number DP 592996

Meridional Circuit Hawkes Bay 2000

From	To	Code	Bearing	Adpt Surv	Bearing Correction	Distance	Adpt Surv	Class
UNMK 53 DP 592996	UNMK (51) DP 28621	ob121	207°00'00"	A DP 28621	0°00'00"	62.91 C		Class B
PEG 10 DP 592996	UNMK 53 DP 592996	ob57	293°46'00"	C		8.02 C		Class B
UNMK 53 DP 592996	BD 9 DP 592996	ob122	293°46'00"	C		1.70 C		Class B
UNMK (51) DP 28621	UNMK (52) DP 28621	ob118	207°00'00"	A DP 28621	0°00'00"	1.00 A DP 28621		Class B
UNMK (32) DP 28621	UNMK (54) DP 28621	ob75	111°48'00"	A DP 28621	0°00'00"	137.18 A DP 28621		Class B
UNMK (54) DP 28621	UNMK (55) DP 28621	ob123	116°16'00"	A DP 28621	0°00'00"	2.71 A DP 28621		Class B
UNMK (55) DP 28621	UNMK (56) DP 28621	ob124	141°21'00"	A DP 28621	0°00'00"	2.60 A DP 28621		Class B
UNMK (56) DP 28621	UNMK (57) DP 28621	ob125	160°54'00"	A DP 28621	0°00'00"	16.79 A DP 28621		Class B
UNMK (57) DP 28621	UNMK (58) DP 28621	ob126	139°25'00"	A DP 28621	0°00'00"	10.90 A DP 28621		Class B
UNMK (58) DP 28621	UNMK (59) DP 28621	ob132	118°45'00"	A DP 28621	0°00'00"	6.16 A DP 28621		Class B
UNMK (59) DP 28621	UNMK (60) DP 28621	ob127	112°51'00"	A DP 28621	0°00'00"	7.47 A DP 28621		Class B
UNMK (60) DP 28621	UNMK (61) DP 28621	ob128	112°51'00"	A DP 28621	0°00'00"	1.00 A DP 28621		Class B
UNMK (61) DP 28621	UNMK (62) DP 28621	ob130	112°51'00"	A DP 28621	0°00'00"	5.12 A DP 28621		Class B
UNMK (62) DP 28621	UNMK (28) DP 28621	ob131	112°51'00"	A DP 28621	0°00'00"	2.07 A DP 28621		Class B
UNMK (60) DP 28621	UNMK 71 DP 592996	ob129	23°46'00"	A DP 28621	0°00'00"	5.90 C		Class B
UNMK 71 DP 592996	UNMK (63) DP 28621	ob142	23°46'00"	A DP 28621	0°00'00"	24.34 C		Class B
UNMK (63) DP 28621	UNMK (64) DP 28621	ob133	288°38'00"	A DP 28621	0°00'00"	8.32 A DP 28621		Class B
UNMK (64) DP 28621	UNMK (65) DP 28621	ob134	203°45'00"	A DP 28621	0°00'00"	0.70 A DP 28621		Class B
UNMK (65) DP 28621	UNMK (66) DP 28621	ob135	293°45'00"	A DP 28621	0°00'00"	2.50 A DP 28621		Class B
UNMK (66) DP 28621	UNMK (67) DP 28621	ob136	23°45'00"	A DP 28621	0°00'00"	3.65 A DP 28621		Class B
UNMK (67) DP 28621	UNMK (68) DP 28621	ob137	113°45'00"	A DP 28621	0°00'00"	2.50 A DP 28621		Class B
UNMK (68) DP 28621	UNMK (69) DP 28621	ob138	203°45'00"	A DP 28621	0°00'00"	1.95 A DP 28621		Class B
UNMK (69) DP 28621	UNMK (70) DP 28621	ob139	108°38'00"	A DP 28621	0°00'00"	9.32 A DP 28621		Class B
UNMK (70) DP 28621	UNMK 72 DP 592996	ob141	203°46'00"	A DP 28621	0°00'00"	25.44 C		Class B

# Mark and Vector

Survey Number DP 592996

Meridional Circuit Hawkes Bay 2000

From	To	Code	Bearing	Adpt Surv	Bearing Correction	Distance	Adpt Surv	Class
UNMK 72 DP 592996	UNMK (61) DP 28621	ob144	203°46'00"	A DP 28621	0°00'00"	5.88 C		Class B
UNMK 72 DP 592996	UNMK 71 DP 592996	ob145	293°46'00"	C		1.00 C		Class B
UNMK 71 DP 592996	PEG 11 DP 592996	ob143	293°46'00"	C		9.11 C		Class B
UNMK (34) DP 28621	UNMK (73) DP 28621	ob79	111°48'00"	A DP 28621	0°00'00"	5.35 A DP 28621		Class B
UNMK (73) DP 28621	UNMK (74) DP 28621	ob151	111°51'30"	A DP 28621	0°00'00"	165.81 A DP 28621		Class B
UNMK (74) DP 28621	UNMK (75) DP 28621	ob146	111°51'30"	A DP 28621	0°00'00"	1.00 A DP 28621		Class B
UNMK (75) DP 28621	UNMK (76) DP 28621	ob147	111°51'30"	A DP 28621	0°00'00"	21.48 A DP 28621		Class B
UNMK (76) DP 28621	UNMK (77) DP 28621	ob148	111°51'30"	A DP 28621	0°00'00"	1.18 A DP 28621		Class B
UNMK (77) DP 28621	UNMK (31) DP 28621	ob150	111°51'30"	A DP 28621	0°00'00"	1.98 A DP 28621		Class B
UNMK (33) DP 28621	UNMK (78) DP 28621	ob77	111°48'00"	A DP 28621	0°00'00"	137.27 A DP 28621		Class B
UNMK (78) DP 28621	UNMK (79) DP 28621	ob152	116°16'00"	A DP 28621	0°00'00"	2.45 A DP 28621		Class B
UNMK (79) DP 28621	UNMK (80) DP 28621	ob153	141°21'00"	A DP 28621	0°00'00"	2.21 A DP 28621		Class B
UNMK (80) DP 28621	UNMK (81) DP 28621	ob154	160°54'00"	A DP 28621	0°00'00"	16.81 A DP 28621		Class B
UNMK (81) DP 28621	UNMK (82) DP 28621	ob155	139°25'00"	A DP 28621	0°00'00"	7.43 A DP 28621		Class B
UNMK (82) DP 28621	UNMK (74) DP 28621	ob156	207°03'10"	A DP 28621	0°00'00"	208.51 A DP 28621		Class B
UNMK (82) DP 28621	UNMK (83) DP 28621	ob157	139°25'00"	A DP 28621	0°00'00"	1.08 A DP 28621		Class B
UNMK (83) DP 28621	UNMK (75) DP 28621	ob158	207°03'10"	A DP 28621	0°00'00"	208.01 A DP 28621		Class B
UNMK (83) DP 28621	UNMK (84) DP 28621	ob159	139°25'00"	A DP 28621	0°00'00"	2.76 A DP 28621		Class B
UNMK (84) DP 28621	UNMK (85) DP 28621	ob160	118°45'00"	A DP 28621	0°00'00"	6.39 A DP 28621		Class B
UNMK (85) DP 28621	UNMK (86) DP 28621	ob161	112°51'00"	A DP 28621	0°00'00"	13.57 A DP 28621		Class B
UNMK (86) DP 28621	UNMK (87) DP 28621	ob162	206°57'00"	A DP 28621	0°00'00"	56.83 A DP 28621		Class B
UNMK (87) DP 28621	UNMK (77) DP 28621	ob164	207°03'10"	A DP 28621	0°00'00"	148.90 A DP 28621		Class B
UNMK (69) DP 28621	UNMK (64) DP 28621	ob140	203°45'00"	A DP 28621	0°00'00"	1.00 A DP 28621		Class B
UNMK (86) DP 28621	UNMK (62) DP 28621	ob163	26°55'00"	A DP 28621	0°00'00"	1.00 A DP 28621		Class B



# Mark and Vector

Survey Number DP 592996

Meridional Circuit Hawkes Bay 2000

From	To	Code	Bearing	Adpt Surv	Bearing Correction	Distance	Adpt Surv	Class
UNMK (87) DP 28621	UNMK (30) DP 28621	ob165	123°46'00"	A DP 28621	0°00'00"	1.99 A	DP 28621	Class B
UNMK (19) DP 28621	UNMK 88 DP 592996	ob52	206°55'00"	A DP 28621	0°00'00"	148.09 C		Class B
UNMK 88 DP 592996	UNMK (62) DP 28621	ob166	206°55'00"	A DP 28621	0°00'00"	5.81 C		Class B
BD 9 DP 592996	UNMK 88 DP 592996	ob67	293°46'00"	C		2.08 C		Class B
UNMK 88 DP 592996	UNMK 72 DP 592996	ob167	293°46'00"	C		5.44 C		Class B
UNMK (76) DP 28621	UNMK (89) DP 28621	ob149	207°03'10"	A DP 28621	0°00'00"	1.00 A	DP 28621	Class B
UNMK (89) DP 28621	UNMK (41) DP 28621	ob168	206°13'00"	A DP 28621	0°00'00"	71.14 A	DP 28621	Class B
UNMK (35) DP 28621	UNMK (140) DP 28621	ob81	111°48'00"	A DP 28621	0°00'00"	5.49 A	DP 28621	Class B
UNMK (140) DP 28621	UNMK (89) DP 28621	ob169	111°51'30"	A DP 28621	0°00'00"	188.19 A	DP 28621	Class B
POST (17) DP 28621	PEG (90) DP 28621	ob48	207°10'00"	A DP 28621	0°00'00"	5.17 A	DP 28621	Class B
PEG (90) DP 28621	UNMK (91) DP 28621	ob170	149°16'30"	A DP 28621	0°00'00"	46.75 A	DP 28621	Class B
UNMK (91) DP 28621	UNMK (92) DP 28621	ob171	149°16'30"	A DP 28621	0°00'00"	6.18 A	DP 28621	Class B
UNMK (92) DP 28621	UNMK (93) DP 28621	ob173	149°16'30"	A DP 28621	0°00'00"	27.00 A	DP 28621	Class B
UNMK (93) DP 28621	PEG (47) DP 28621	ob175	149°16'30"	A DP 28621	0°00'00"	4.56 A	DP 28621	Class B
UNMK (41) DP 28621	UNMK (94) DP 28621	ob89	206°13'00"	A DP 28621	0°00'00"	4.63 A	DP 28621	Class B
UNMK (94) DP 28621	PEG (90) DP 28621	ob177	117°03'00"	A DP 28621	0°00'00"	2.04 A	DP 28621	Class B
PEG VIIIA DP 28621	IT VIII DP 28621	ob110	273°18'00"	A DP 28621	0°00'00"	15.58 A	DP 28621	
IT VIII DP 28621	IT V DP 20784	ob178	273°18'00"	A DP 28621	0°00'00"	281.20 A	DP 28621	
IT V DP 20784	IS XI DP 20784	ob180	210°57'40"	A DP 20784	0°00'00"	164.60 A	DP 20784	
IT VIII DP 28621	UNMK (95) DP 28621	ob179	204°07'00"	C		122.10 C		
UNMK (95) DP 28621	PEG (96) DP 28621	ob182	30°37'30"	A DP 28621	0°00'00"	98.00 A	DP 28621	Class BD
PEG (96) DP 28621	UNMK (97) DP 28621	ob183	30°37'30"	A DP 28621	0°00'00"	4.52 A	DP 28621	Class B
UNMK (97) DP 28621	PEG VIIIA DP 28621	ob185	30°37'30"	A DP 28621	0°00'00"	25.94 A	DP 28621	Class B
UNMK (52) DP 28621	UNMK (25) DP 28621	ob120	207°00'00"	A DP 28621	0°00'00"	220.51 A	DP 28621	Class B

# Mark and Vector

Survey Number DP 592996

Meridional Circuit Hawkes Bay 2000

From	To	Code	Bearing	Adpt Surv	Bearing Correction	Distance	Adpt Surv	Class
UNMK (97) DP 28621	UNMK (99) DP 28621	ob186	272°52'00"	A DP 28621	0°00'00"	4.52 A	DP 28621	Class B
UNMK (99) DP 28621	UNMK (100) DP 28621	ob188	272°52'00"	A DP 28621	0°00'00"	13.26 A	DP 28621	Class B
UNMK (100) DP 28621	UNMK (101) DP 28621	ob190	259°42'30"	A DP 28621	0°00'00"	89.45 A	DP 28621	Class B
UNMK (101) DP 28621	UNMK (102) DP 397783	ob191	252°18'50"	A DP 28621	0°00'00"	20.71 A	DP 397783	Class B
UNMK (102) DP 397783	UNMK (103) DP 397783	ob192	171°40'10"	A DP 397783	0°00'00"	65.76 A	DP 397783	Class B
UNMK (103) DP 397783	UNMK (104) DP 397783	ob193	220°13'00"	A DP 397783	0°00'00"	49.60 A	DP 397783	Class B
UNMK (104) DP 397783	UNMK (105) DP 397783	ob194	220°13'00"	A DP 397783	0°00'00"	1.88 A	DP 397783	Class B
UNMK (105) DP 397783	UNMK (106) DP 397783	ob195	309°30'40"	A DP 397783	0°00'00"	2.59 A	DP 397783	Class B
UNMK (106) DP 397783	UNMK (107) DP 397783	ob197	321°12'00"	A DP 397783	0°00'00"	1.44 A	DP 397783	Class B
UNMK (107) DP 397783	UNMK (108) DP 397783	ob199	274°22'20"	A DP 397783	0°00'00"	14.80 A	DP 397783	Class B
UNMK (108) DP 397783	UNMK (109) DP 397783	ob200	274°22'20"	A DP 397783	0°00'00"	4.38 A	DP 397783	Class B
UNMK (109) DP 397783	UNMK (110) DP 397783	ob202	274°22'20"	A DP 397783	0°00'00"	187.07 A	DP 397783	Class B
UNMK (110) DP 397783	UNMK (44) DP 397783	ob204	259°48'30"	A DP 397783	0°00'00"	10.32 A	DP 397783	Class B
PEG (96) DP 28621	UNMK (111) DP 28621	ob184	272°52'00"	A DP 28621	0°00'00"	4.52 A	DP 28621	Class B
UNMK (111) DP 28621	POST (112) DP 28621	ob205	272°52'00"	A DP 28621	0°00'00"	10.70 A	DP 28621	Class B
POST (112) DP 28621	POST (113) DP 28621	ob207	259°42'30"	A DP 28621	0°00'00"	88.73 A	DP 28621	Class B
POST (113) DP 28621	UNMK (114) DP 397783	ob208	252°18'50"	A DP 28621	0°00'00"	19.09 A	DP 397783	Class B
UNMK (114) DP 397783	UNMK (115) DP 397783	ob209	171°40'10"	A DP 397783	0°00'00"	62.94 A	DP 397783	Class B
UNMK (115) DP 397783	UNMK (116) DP 397783	ob210	220°13'00"	A DP 397783	0°00'00"	50.41 A	DP 397783	Class B
UNMK (116) DP 397783	UNMK (104) DP 397783	ob211	307°00'00"	A DP 397783	0°00'00"	2.00 A	DP 397783	Class B
UNMK (119) DP 397783	UNMK (120) DP 397783	ob213	357°52'00"	A DP 397783	0°00'00"	3.12 A	DP 397783	Class B
UNMK (120) DP 397783	UNMK (105) DP 397783	ob215	7°57'00"	A DP 397783	0°00'00"	3.55 A	DP 397783	Class B
UNMK (119) DP 397783	UNMK (121) DP 397783	ob214	321°12'00"	A DP 397783	0°00'00"	4.07 A	DP 397783	Class B
UNMK (121) DP 397783	UNMK (122) DP 397783	ob216	25°46'00"	A DP 397783	0°00'00"	2.13 A	DP 397783	Class B

# Mark and Vector

Survey Number DP 592996

Meridional Circuit Hawkes Bay 2000

From	To	Code	Bearing	Adpt Surv	Bearing Correction	Distance	Adpt Surv	Class
UNMK (122) DP 397783	UNMK (106) DP 397783	ob217	0°00'00"	A DP 397783	0°00'00"	3.19 A	DP 397783	Class B
PEG (46) DP 20784	UNMK (123) DP 397783	ob94	210°36'50"	A DP 20784	0°00'00"	0.64 A	DP 397783	Class B
UNMK (123) DP 397783	UNMK (124) DP 397783	ob187	210°36'50"	A DP 20784	0°00'00"	13.92 A	DP 397783	Class B
UNMK (124) DP 397783	UNMK (125) DP 397783	ob219	210°36'50"	A DP 20784	0°00'00"	2.04 A	DP 397783	Class B
UNMK (125) DP 397783	UNMK (98) DP 20784	ob221	210°36'50"	A DP 20784	0°00'00"	73.40 A	DP 397783	Class BD
UNMK (98) DP 20784	IS XI DP 20784	ob222	28°31'00"	C		98.50 C		
UNMK (122) DP 397783	UNMK (126) DP 397783	ob218	321°12'00"	A DP 397783	0°00'00"	3.06 A	DP 397783	Class B
UNMK (126) DP 397783	UNMK (127) DP 397783	ob223	274°22'20"	A DP 397783	0°00'00"	17.82 A	DP 397783	Class B
UNMK (127) DP 397783	UNMK (128) DP 397783	ob224	274°22'20"	A DP 397783	0°00'00"	4.38 A	DP 397783	Class B
UNMK (128) DP 397783	UNMK (129) DP 397783	ob226	274°22'20"	A DP 397783	0°00'00"	182.91 A	DP 397783	Class B
UNMK (129) DP 397783	UNMK (123) DP 397783	ob227	259°48'30"	A DP 397783	0°00'00"	11.79 A	DP 397783	Class B
UNMK (127) DP 397783	UNMK 145 DP 592996	ob225	247°11'10"	A DP 397783	0°00'00"	66.95 C		Class BD
UNMK 145 DP 592996	UNMK 131 DP 592996	ob242	264°11'00"	C		6.84 C		
UNMK 131 DP 592996	UNMK (128) DP 397783	ob229	67°11'10"	A DP 397783	0°00'00"	69.60 C		Class BD
UNMK (108) DP 397783	UNMK (127) DP 397783	ob201	247°11'10"	A DP 397783	0°00'00"	4.38 A	DP 397783	Class B
UNMK (109) DP 397783	UNMK (128) DP 397783	ob203	247°11'10"	A DP 397783	0°00'00"	4.38 A	DP 397783	Class B
UNMK (105) DP 397783	UNMK (132) DP 397783	ob196	0°00'00"	A DP 397783	0°00'00"	11.21 A	DP 397783	Class B
UNMK (132) DP 397783	UNMK (133) DP 397783	ob230	57°00'00"	A DP 397783	0°00'00"	1.29 A	DP 397783	Class B
UNMK (133) DP 397783	UNMK (134) DP 397783	ob232	327°00'00"	A DP 397783	0°00'00"	5.00 A	DP 397783	Class B
UNMK (134) DP 397783	UNMK (135) DP 397783	ob233	237°00'00"	A DP 397783	0°00'00"	10.64 A	DP 397783	Class B
UNMK (135) DP 397783	UNMK (136) DP 397783	ob234	127°00'00"	A DP 397783	0°00'00"	1.35 A	DP 397783	Class B
UNMK (136) DP 397783	UNMK (109) DP 397783	ob235	247°11'10"	A DP 397783	0°00'00"	13.62 A	DP 397783	Class B
UNMK (106) DP 397783	UNMK (137) DP 397783	ob198	0°00'00"	A DP 397783	0°00'00"	8.27 A	DP 397783	Class B
UNMK (137) DP 397783	UNMK (138) DP 397783	ob236	237°00'00"	A DP 397783	0°00'00"	5.15 A	DP 397783	Class B

# Mark and Vector

Survey Number DP 592996

Meridional Circuit Hawkes Bay 2000

From	To	Code	Bearing	Adpt Surv	Bearing Correction	Distance	Adpt Surv	Class
UNMK (138) DP 397783	UNMK (139) DP 397783	ob237	307°00'00"	A DP 397783	0°00'00"	1.66 A	DP 397783	Class B
UNMK (139) DP 397783	UNMK (108) DP 397783	ob238	247°11'10"	A DP 397783	0°00'00"	10.88 A	DP 397783	Class B
UNMK (139) DP 397783	UNMK (136) DP 397783	ob239	307°00'00"	A DP 397783	0°00'00"	2.31 A	DP 397783	Class B
UNMK (132) DP 397783	UNMK (137) DP 397783	ob231	237°00'00"	A DP 397783	0°00'00"	2.38 A	DP 397783	Class B
UNMK (111) DP 28621	UNMK (141) DP 28621	ob206	210°37'30"	A DP 28621	0°00'00"	104.00 A	DP 28621	Class BD
UNMK (93) DP 28621	UNMK (143) DP 28621	ob176	210°37'00"	A DP 28621	0°00'00"	17.50 A	DP 28621	Class B
UNMK (143) DP 28621	UNMK (144) DP 28621	ob240	210°37'00"	A DP 28621	0°00'00"	4.00 A	DP 28621	Class B
UNMK (144) DP 28621	UNMK (99) DP 28621	ob241	210°37'00"	A DP 28621	0°00'00"	428.58 A	DP 28621	Class B
UNMK (99) DP 28621	UNMK (111) DP 28621	ob189	210°37'00"	A DP 28621	0°00'00"	4.52 A	DP 28621	Class B
UNMK (92) DP 28621	UNMK (143) DP 28621	ob174	172°44'00"	A DP 28621	0°00'00"	38.58 A	DP 28621	Class B
UNMK (91) DP 28621	UNMK (144) DP 28621	ob172	172°44'00"	A DP 28621	0°00'00"	47.40 A	DP 28621	Class B
UNMK (124) DP 397783	UNMK 147 DP 592996	ob220	109°34'10"	A DP 397783	0°00'00"	96.34 C		Class BD
UNMK 147 DP 592996	UNMK 148 DP 592996	ob228	260°39'00"	C		4.15 C		
UNMK 148 DP 592996	UNMK (125) DP 397783	ob243	289°34'10"	A DP 397783	0°00'00"	93.10 C		Class BD
UNMK (116) DP 397783	UNMK 117 DP 592996	ob212	127°00'00"	A DP 397783	0°00'00"	11.19 C		Class BD
UNMK 117 DP 592996	UNMK 118 DP 592996	ob244	254°18'00"	C		9.29 C		
UNMK 118 DP 592996	UNMK (119) DP 397783	ob245	307°00'00"	A DP 397783	0°00'00"	3.95 C		Class BD
UNMK (95) DP 28621	UNMK (141) DP 28621	ob181	236°54'00"	C		9.04 C		
IT 2 DP 592996	PEG 10 DP 592996	ob18	121°31'00"	M		11.29 M		

Mark Name	Mark Condition	Description
IT 1 DP 592996		DOWN 0.30 IN GRASS BERM
IT 2 DP 592996		DOWN 0.20 1.50 FROM FCE
IT 3 DP 592996		DOWN 0.30 IN LANEWAY
IT III DP 28621		DOWN 0.40 IN SWALE
SS 377 SO 4583		IT IN CNC BLK DOWN 0.30 IN BERM



# Mark and Vector

Survey Number DP 592996  
Meridional Circuit Hawkes Bay 2000

Mark Name	Mark Condition	Description
SS 378 SO 4583		IT IN CNC BLK DOWN 0.10 IN GATEWAY

\*\*\* End of Report \*\*\*

Prepared by: Karl Carew  
 Licensed Cadastral Surveyor  
[karl.carew@developmentnous.nz](mailto:karl.carew@developmentnous.nz)



JULY 2023

## SCHEDULE/MEMORANDUM OF EASEMENTS

# DP 592996

**Development Nous Ltd**

502 Karamu Road North  
 Hastings 4122  
 New Zealand  
 PO Box 385  
 Hastings 4156  
 New Zealand

**06 876 2159**

### Land Registration District

Hawkes Bay

### Territorial Authority (the Council)

Hastings District Council

MEMORANDUM OF EASEMENTS			
Purpose	Shown	Servient Tenement (Burdened Land)	Dominant Tenement (Benefited Land)
RIGHT OF WAY	A, B, C, G, H, I	LOT 1 HEREON	LOT 2 HEREON

SCHEDULE OF EXISTING EASEMENTS IN GROSS			
Purpose	Shown	Servient Tenement (Burdened Land)	Document
RIGHT TO CONVEY WATER AND ELECTRONICS	R, N, W, P, E, K, Y, AC, AA, AB	LOT 2 HEREON	T 5100704.4
	Q, Z	LOT 2 HEREON	T 5227532.2
	AB, AD	LOT 2 HEREON	EI 7873071.1
RIGHT TO CONVEY ELECTRONICS	T, U	LOT 1 HEREON	T 5100704.4
	S, V	LOT 2 HEREON	
RIGHT TO CONVEY ELECTRICAL ENERGY	L, G, H, I, T, U	LOT 1 HEREON	T 5100704.5
	M, N, O, P, R, S, J, K, X, Q, Y, Z, AA, AB, AC	LOT 2 HEREON	
RIGHT TO CONVEY ELECTRICITY, WATER AND ELECTRONICS	AE, AF	LOT 2 HEREON	EI 7873071.1
RIGHT TO CONVEY ELECTRICITY	AK, AJ, AI	LOT 2 HEREON	EI 7873071.1



<b>SCHEDULE OF EXISTING EASEMENTS</b>			
<b>Purpose</b>	<b>Shown</b>	<b>Servient Tenement (Burdened Land)</b>	<b>Document</b>
RIGHT TO CONVEY WATER	B, H	LOT 1 HEREON	EC 5100704.6
RIGHT TO CONVEY ELECTRIC POWER	F	LOT 2 HEREON	EC 5100704.6
RIGHT OF WAY	A, B, C, G, H, I	LOT 1 HEREON	EC 5100704.7
	D, E, F, J, K, X, Y	LOT 2 HEREON	
RIGHT TO CONVEY WATER AND ELECTRONICS	AM, AL, AN	LOT 2 HEREON	EI 7873071.2
RIGHT TO CONVEY ELECTRICITY, WATER AND ELECTRONICS	AJ, AF, AH, AG	LOT 2 HEREON	EI 7873071.2
RIGHT TO CONVEY ELECTRICITY	AK, AI	LOT 2 HEREON	EI 7873071.2

# Occupation Diagram

Development Nous Ltd

502 Karamu Road North  
Hastings 4122  
New Zealand

PO Box 385  
Hastings 4156  
New Zealand

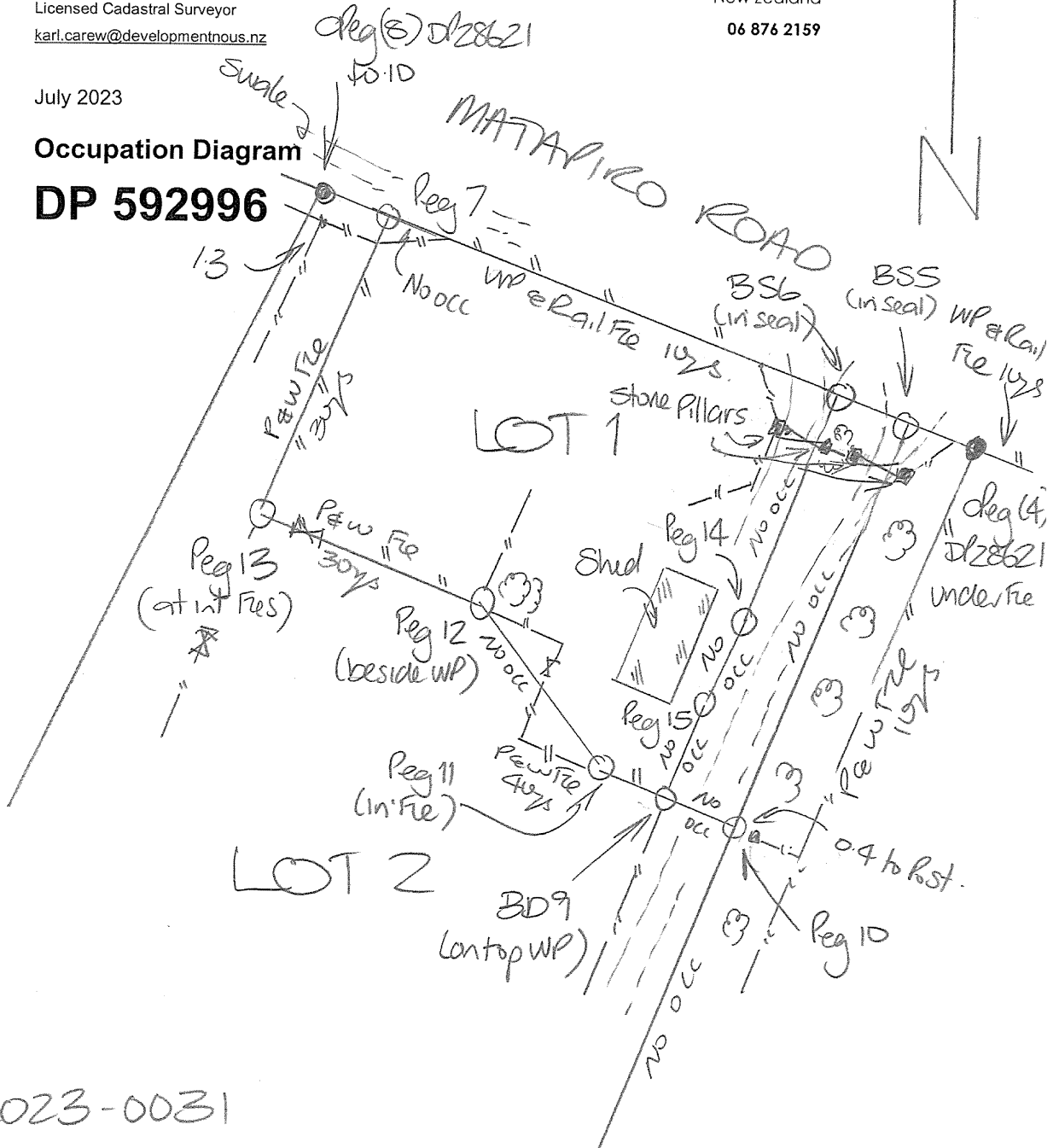
06 876 2159

Prepared by: Karl Carew  
Licensed Cadastral Surveyor  
[karl.carew@developmentnous.nz](mailto:karl.carew@developmentnous.nz)

July 2023

Occupation Diagram

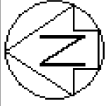
DP 592996



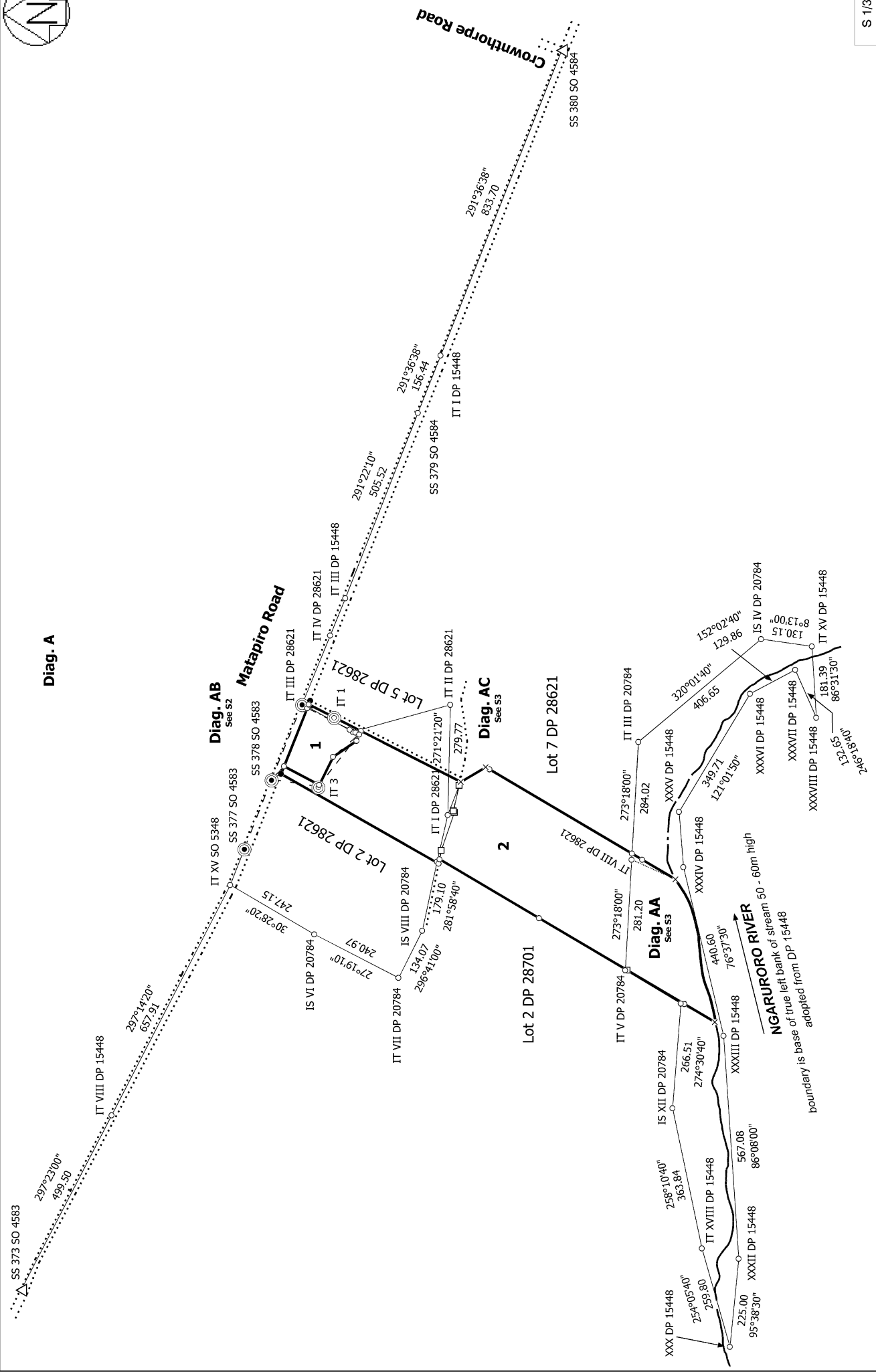
H2023-0031







Diag. A

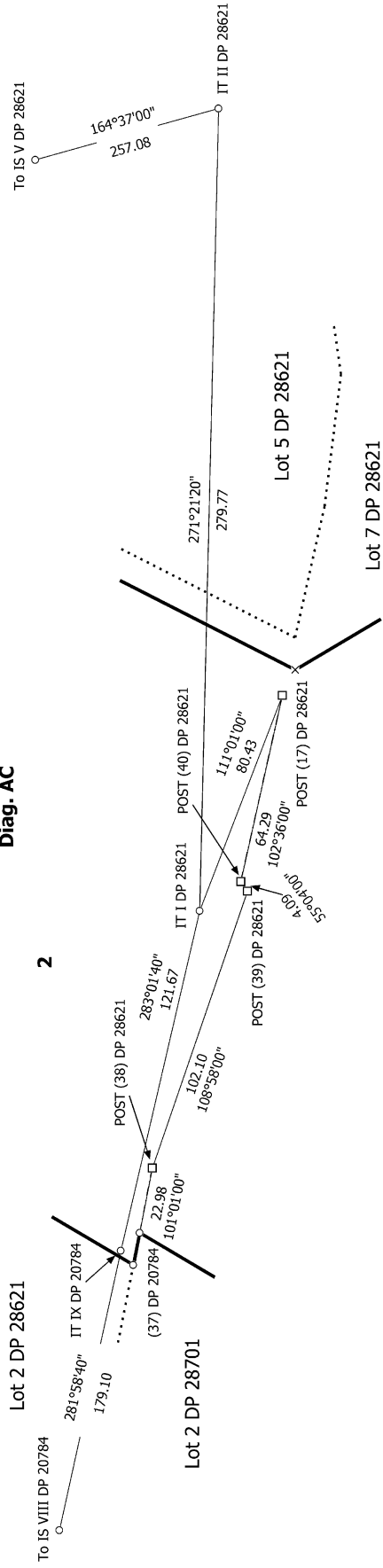


<p>Land District: Hawkes Bay</p> <p><b>Digitally Generated Plan</b></p> <p>Generated on: 14/11/2023 2:46pm Page 17 of 31</p>	<p><b>LOTS 1 AND 2 BEING SUBDIVISION OF LOTS 3 AND 4 DP 28621</b></p>	<p>Surveyor: Karl Robert Carew          Firm: Development Nous Limited          Date of Survey: 29/06/2023</p>	<p>Record of Survey          DP 592996          Deposited on: 19/10/2023</p>
--	---	--	--

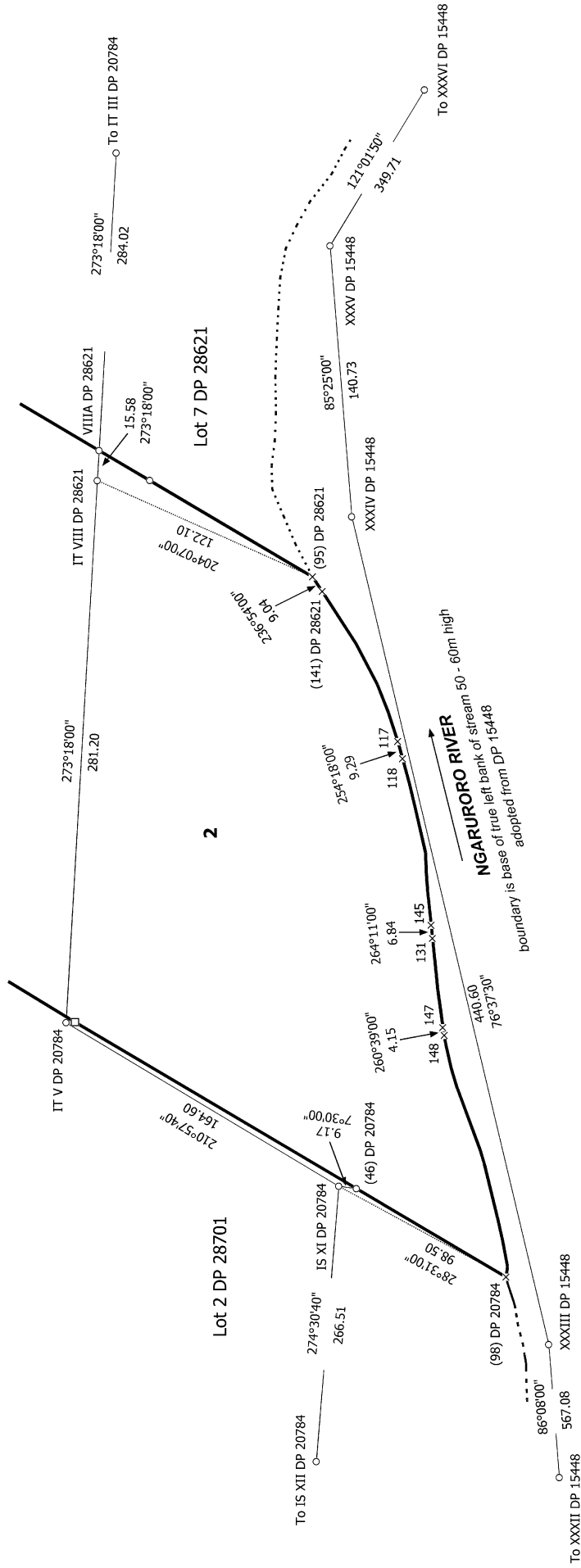


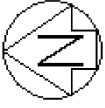


Diag. AC

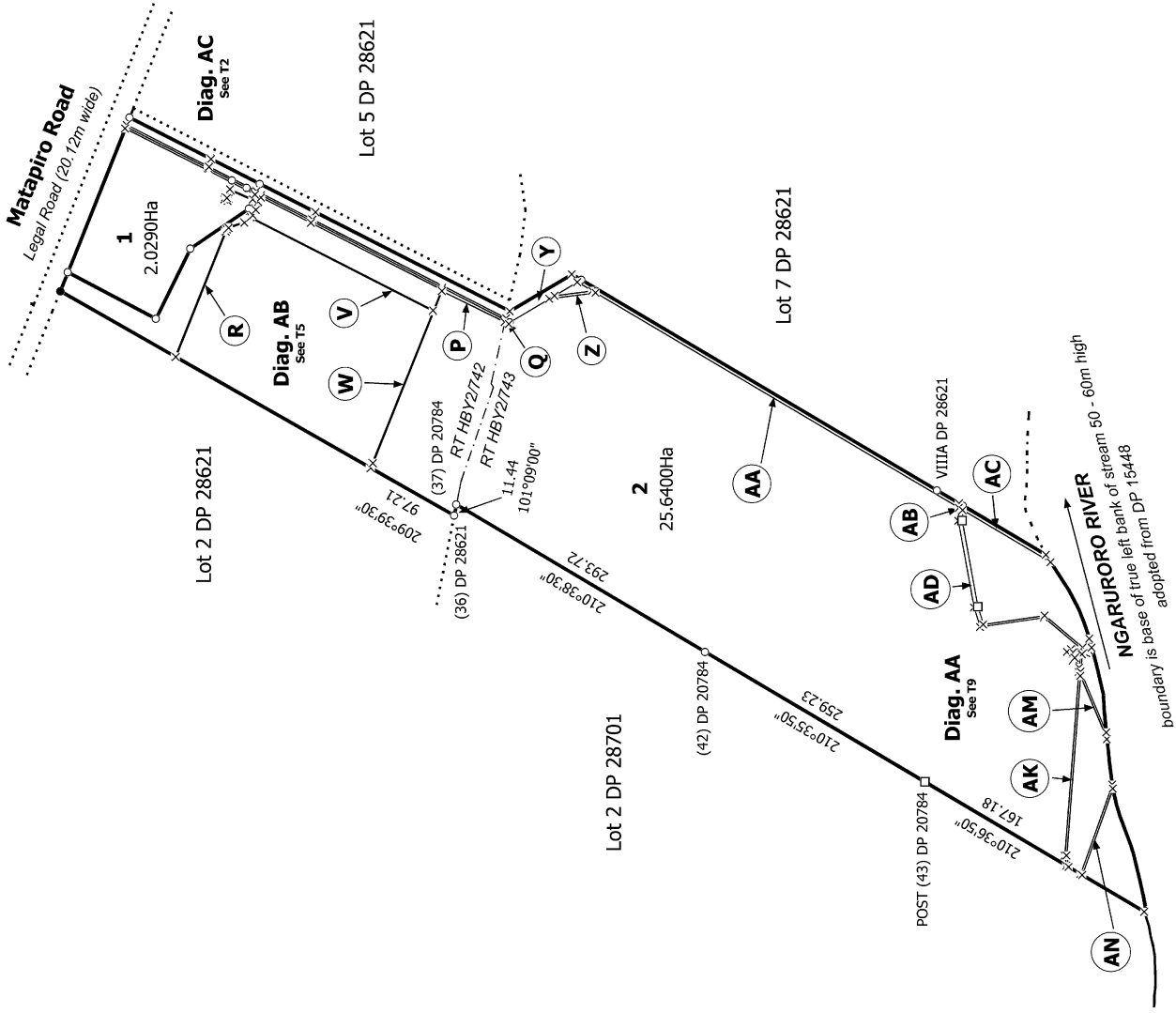


Diag. AA





Diag. A



T 1/12

Land District: Hawkes Bay

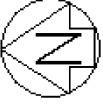
Digitally Generated Plan  
Generated on: 14/11/2023 2:46pm Page 20 of 31

LOTS 1 AND 2 BEING SUBDIVISION OF LOTS 3 AND 4 DP 28621

Surveyor: Karl Robert Carew  
Firm: Development Nous Limited  
Date of Survey: 29/06/2023

Record of Survey  
DP 592996

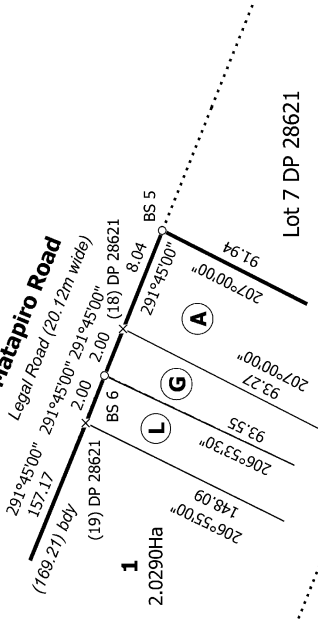
Deposited on: 19/10/2023



Diag. AC

Diag. ACC

Matapiro Road  
Legal Road (20.12m wide)



Lot 7 DP 28621

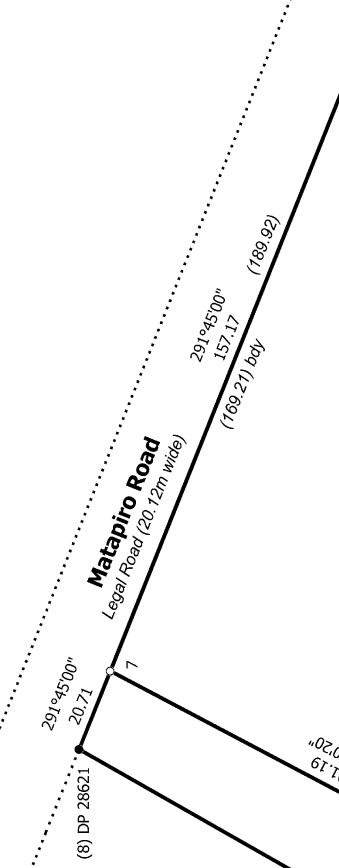
Diag. ACC  
See T2

Lot 7 DP 28621

Lot 5 DP 28621

Diag. ACB  
See T3

Diag. ACA  
See T4



1

2.0290Ha

2

25.6400Ha

Lot 2 DP 28621

(460.41) bdy

(32) DP 28621

(33) DP 28621

209°39'30"

227.01

1.01

209°39'30"

(32) DP 28621

(33) DP 28621

209°39'30"

227.01

1.01

209°39'30"

227.01

1.01

209°39'30"

227.01

1.01

209°39'30"

227.01

1.01

209°39'30"

227.01

1.01

LOTS 1 AND 2 BEING SUBDIVISION OF LOTS 3 AND 4 DP 28621

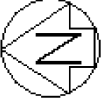
Surveyor: Karl Robert Carew  
Firm: Development Nous Limited  
Date of Survey: 29/06/2023

Record of Survey  
DP 592996  
Deposited on: 19/10/2023

T 2/12

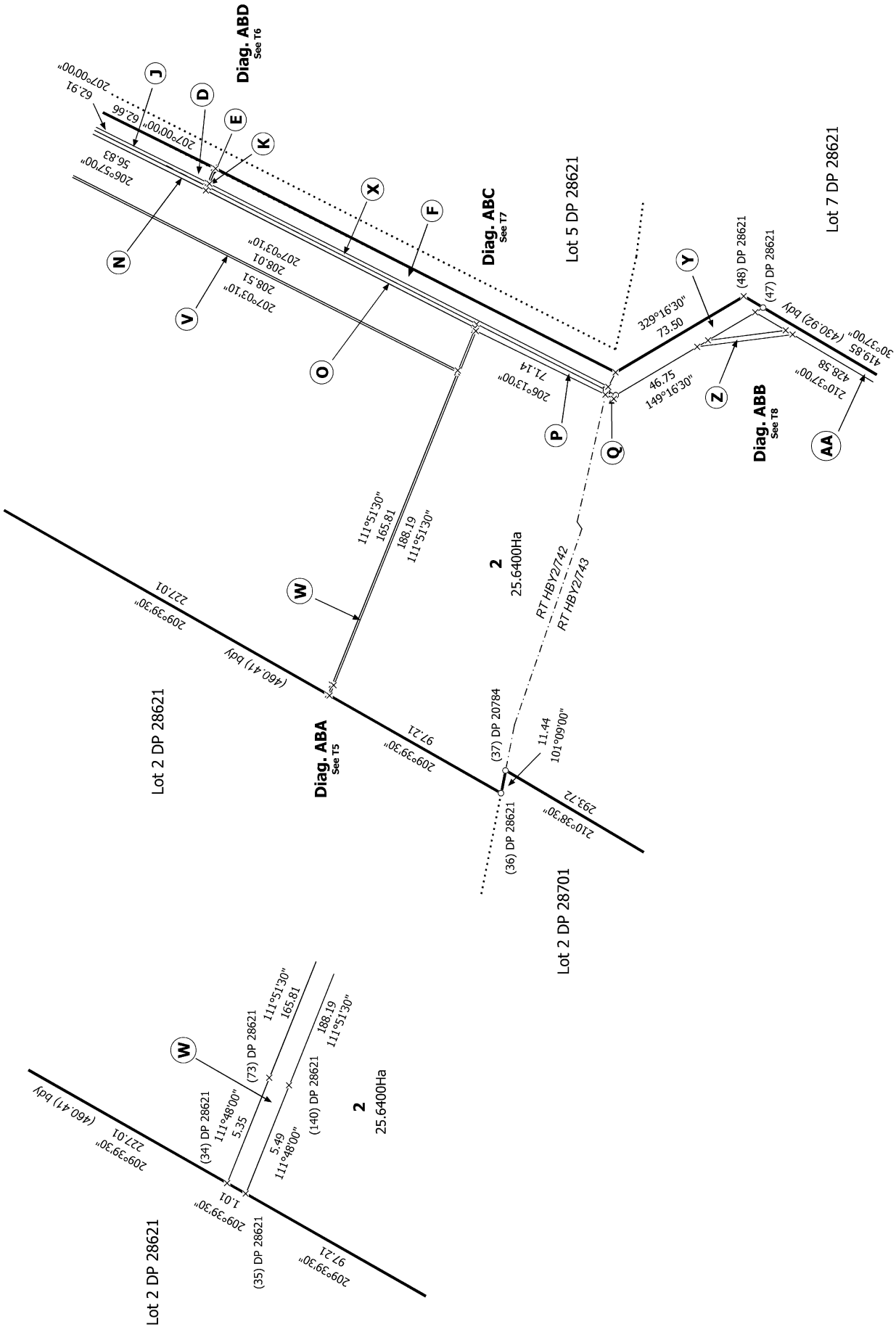






Diag. AB

Diag. ABA



T 5/12

Land District: Hawkes Bay

Digitally Generated Plan

Generated on: 14/11/2023 2:46pm Page 24 of 31

LOTS 1 AND 2 BEING SUBDIVISION OF LOTS 3 AND 4 DP 28621

Surveyor: Karl Robert Carew  
Firm: Development Nous Limited  
Date of Survey: 29/06/2023

Record of Survey  
DP 592996

Deposited on: 19/10/2023



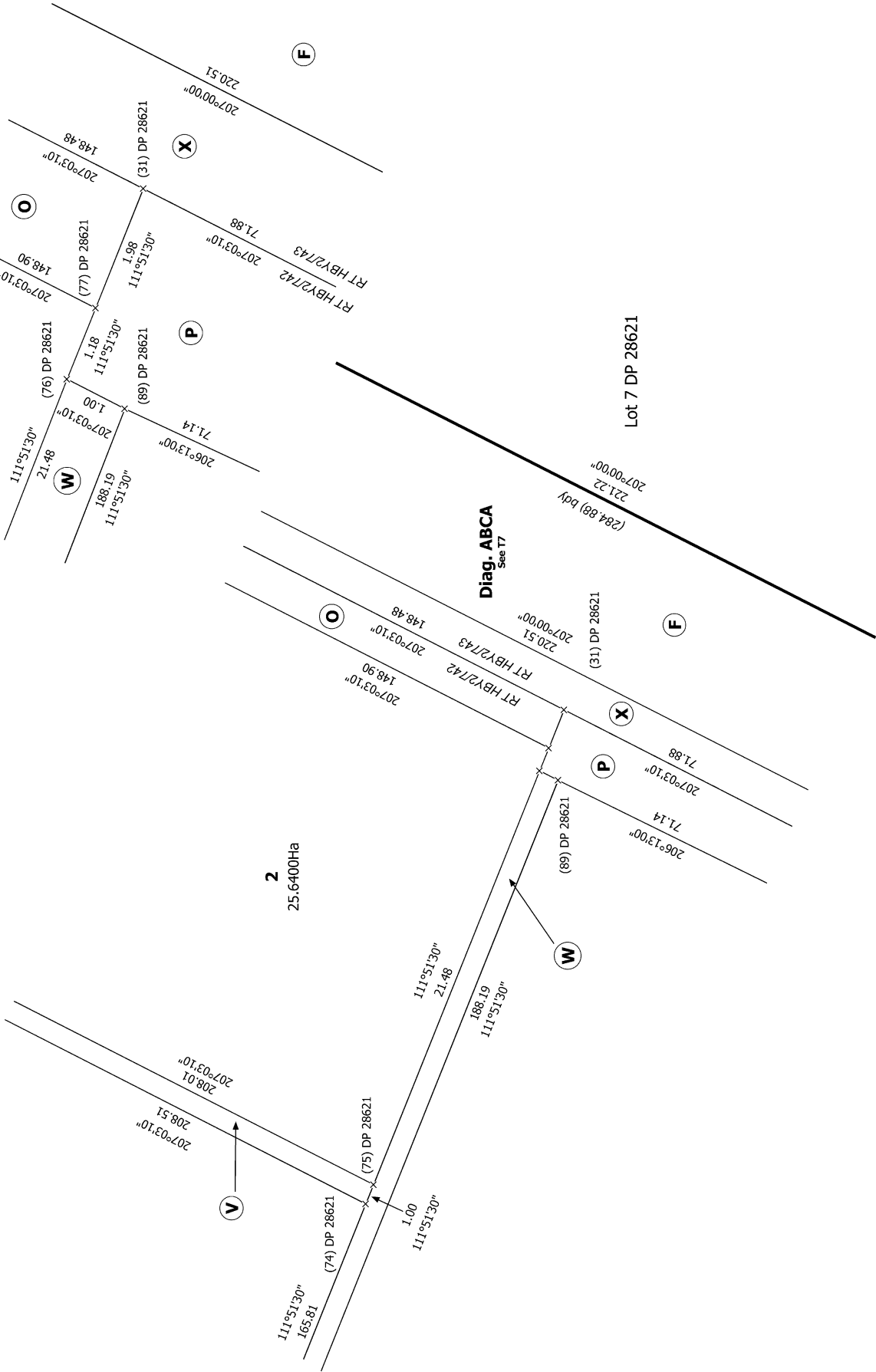




Diag. ABCA

2  
25.6400Ha

2  
25.6400Ha



T 7/12

Land District: Hawkes Bay

Digitally Generated Plan

Generated on: 14/11/2023 2:46pm Page 26 of 31

LOTS 1 AND 2 BEING SUBDIVISION OF LOTS 3 AND 4 DP 28621

Surveyor: Karl Robert Carew  
Firm: Development Nous Limited  
Date of Survey: 29/06/2023

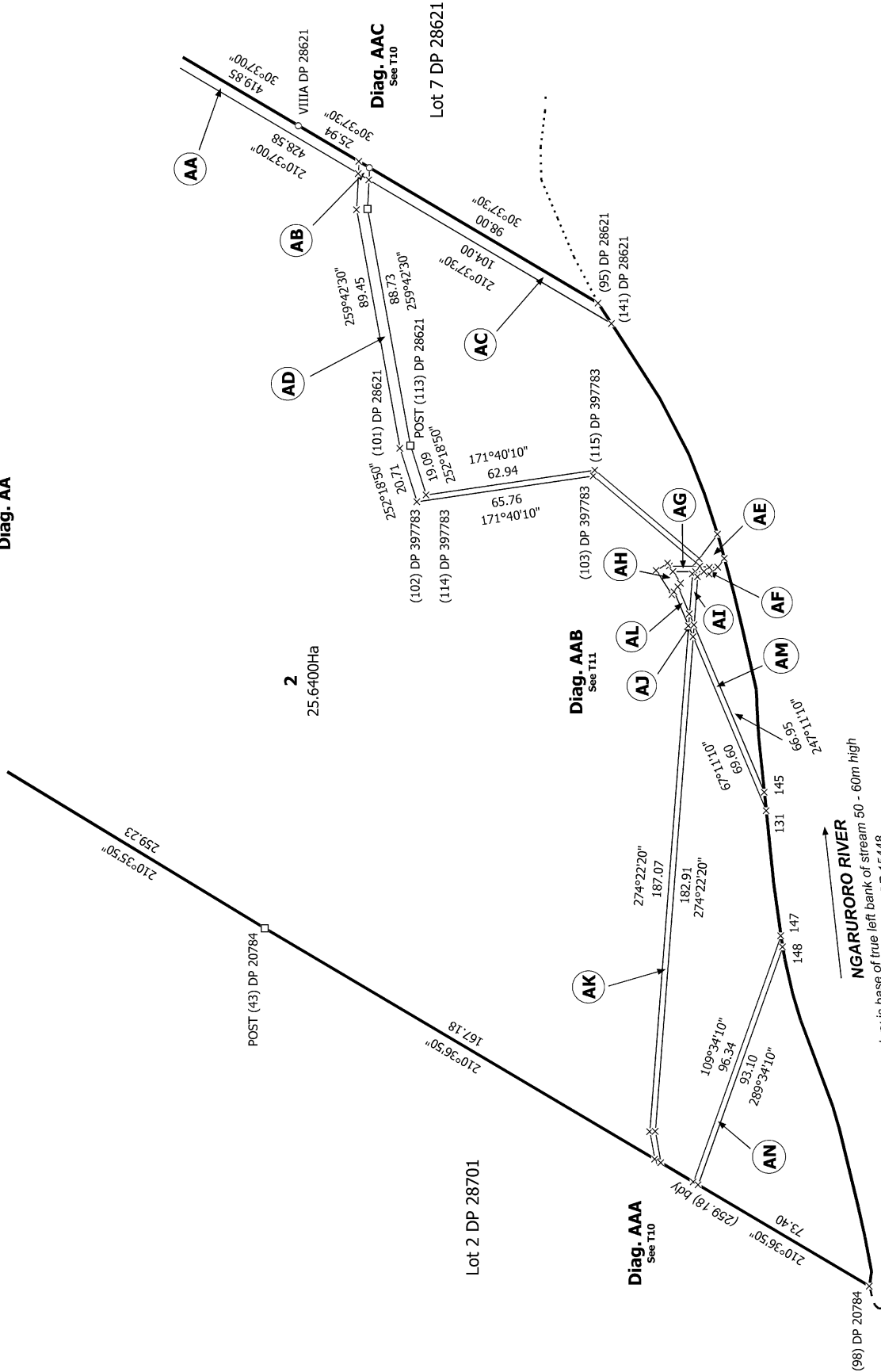
Record of Survey  
DP 592996

Deposited on: 19/10/2023





Diag. AA



T 9/12

Land District: Hawkes Bay

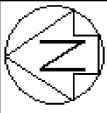
**Digitally Generated Plan**  
Generated on: 14/11/2023 2:46pm Page 28 of 31

LOTS 1 AND 2 BEING SUBDIVISION OF LOTS 3 AND 4 DP 28621

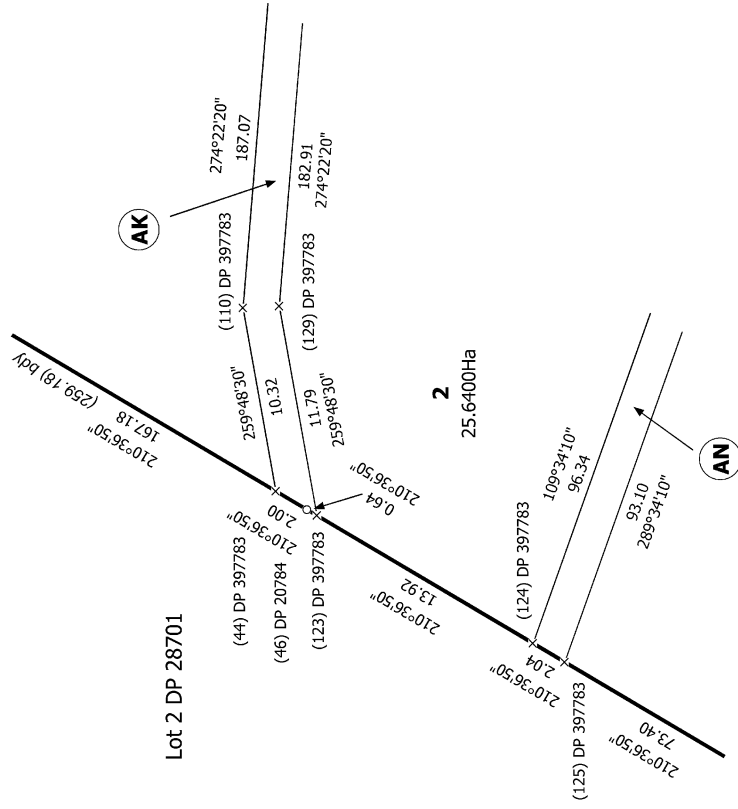
Surveyor: Karl Robert Carew  
Firm: Development Nous Limited  
Date of Survey: 29/06/2023

Record of Survey  
DP 592996

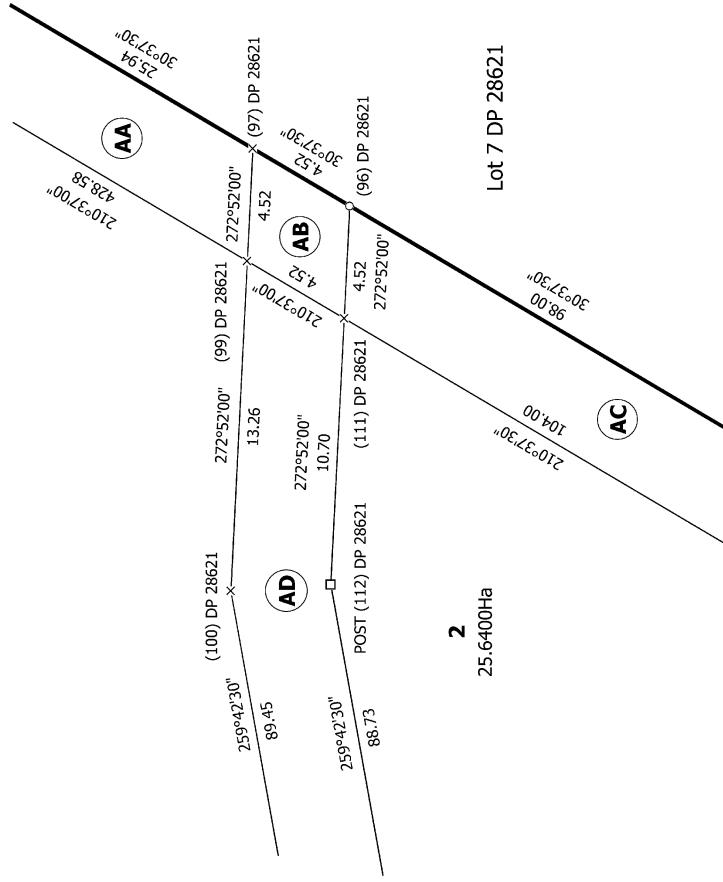
Deposited on: 19/10/2023



Diag. AAA



Diag. AAC



T 10/12

Land District: Hawkes Bay

Digitally Generated Plan

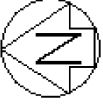
Generated on: 14/11/2023 2:46pm Page 29 of 31

LOTS 1 AND 2 BEING SUBDIVISION OF LOTS 3 AND 4 DP 28621

Surveyor: Karl Robert Carew  
Firm: Development Nous Limited  
Date of Survey: 29/06/2023

Record of Survey  
DP 592996

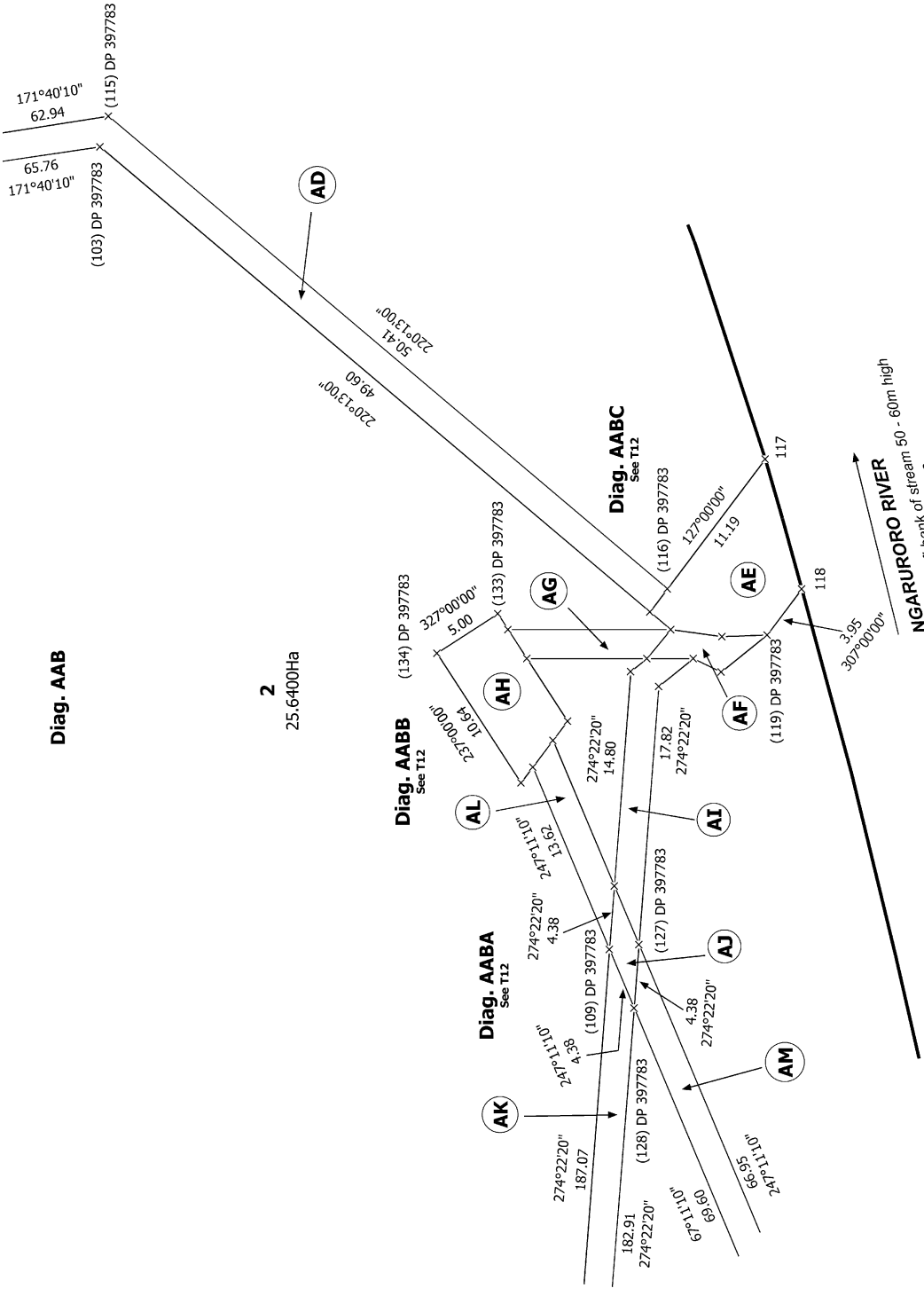
Deposited on: 19/10/2023



**Diag. AAB**

**2**

25.6400Ha



**NGARURORO RIVER**  
 boundary is base of true left bank of stream 50 - 60m high  
 adopted from DP 15448

T 11/12

Land District: Hawkes Bay

**Digitally Generated Plan**

Generated on: 14/11/2023 2:46pm Page 30 of 31

**LOTS 1 AND 2 BEING SUBDIVISION OF LOTS 3 AND 4 DP 28621**

Surveyor: Karl Robert Carew  
 Firm: Development Nous Limited  
 Date of Survey: 29/06/2023

Record of Survey  
 DP 592996

Deposited on: 19/10/2023

