



Record of Survey - DP 592929

Survey Number DP 592929
Surveyor Reference 243026 WALKER
Surveyor Brian Patrick Cowley
Survey Firm Maven Associates Limited
Surveyor Declaration I Brian Patrick Cowley, being a licensed cadastral surveyor, certify that--
 (a) this dataset provided by me and its related survey are accurate, correct and in accordance with the Cadastral Survey Act 2002 and Cadastral Survey Rules 2021; and
 (b) the survey was undertaken by me or under my personal direction.
 Declared on 06 Dec 2023 02:41 PM

Survey Details

Dataset Description Lots 1 - 11, 16 - 21, 100, 102, Height Limited Lots 12 - 15 & 101 Being a Subdivision of Lots 37 & 38 DP 56375
Purpose LT Subdivision
Status Deposited **Type** Survey
Land District North Auckland **Survey Class** Class A
Meridional Circuit Mount Eden 2000 **Vertical Datum** Auckland 1946

Survey Dates

Surveyed Date 26/07/2023 **Certified Date** 06/12/2023
Submitted Date 06/12/2023 14:41:17 **Survey Approval Date** 07/12/2023
Deposit Date 20/12/2023

Referenced Surveys

Survey Number	Land District	Bearing Correction
DP 142799	North Auckland	0°00'00"
DP 160523	North Auckland	0°00'00"
DP 56375	North Auckland	0°00'00"
DP 184043	North Auckland	0°00'00"
DP 501461	North Auckland	0°00'00"

Territorial Authorities

Auckland Council

Comprised In

RT NA8C/480
 RT 1030542

Created Parcels

Parcels	Parcel Intent	Area	RT Reference
Area XX Deposited Plan 592929	Easement		
Height-Limited Area YY Deposited Plan 592929	Easement		
Area ZZ Deposited Plan 592929	Easement		
Area AL Deposited Plan 592929	Easement		
Area AM Deposited Plan 592929	Easement		

Record of Survey - DP 592929

Created Parcels

Parcels	Parcel Intent	Area	RT Reference
Area AN Deposited Plan 592929	Easement		
Area AK Deposited Plan 592929	Easement		
Area AG Deposited Plan 592929	Easement		
Lot 1 Deposited Plan 592929	Fee Simple Title	0.0166 Ha	1139615
Lot 2 Deposited Plan 592929	Fee Simple Title	0.0131 Ha	1139616
Lot 3 Deposited Plan 592929	Fee Simple Title	0.0123 Ha	1139617
Lot 4 Deposited Plan 592929	Fee Simple Title	0.0123 Ha	1139618
Lot 5 Deposited Plan 592929	Fee Simple Title	0.0123 Ha	1139619
Lot 6 Deposited Plan 592929	Fee Simple Title	0.0123 Ha	1139620
Lot 7 Deposited Plan 592929	Fee Simple Title	0.0216 Ha	1139621
Lot 8 Deposited Plan 592929	Fee Simple Title	0.0181 Ha	1139622
Lot 9 Deposited Plan 592929	Fee Simple Title	0.0083 Ha	1139623
Lot 10 Deposited Plan 592929	Fee Simple Title	0.0083 Ha	1139624
Lot 11 Deposited Plan 592929	Fee Simple Title	0.0083 Ha	1139625
Height-Limited Lot 12 Deposited Plan 592929	Fee Simple Title	0.0072 Ha	1139626
Height-Limited Lot 13 Deposited Plan 592929	Fee Simple Title	0.0099 Ha	1139627
Height-Limited Lot 14 Deposited Plan 592929	Fee Simple Title	0.0093 Ha	1139628
Height-Limited Lot 15 Deposited Plan 592929	Fee Simple Title	0.0154 Ha	1139629
Lot 16 Deposited Plan 592929	Fee Simple Title	0.0012 Ha	1139625
Lot 17 Deposited Plan 592929	Fee Simple Title	0.0012 Ha	1139624
Lot 18 Deposited Plan 592929	Fee Simple Title	0.0012 Ha	1139623
Lot 19 Deposited Plan 592929	Fee Simple Title	0.0012 Ha	1139622
Lot 20 Deposited Plan 592929	Fee Simple Title	0.0012 Ha	1139620
Lot 21 Deposited Plan 592929	Fee Simple Title	0.0012 Ha	1139621
Lot 100 Deposited Plan 592929	Fee Simple Title	0.0112 Ha	Multiple
Height-Limited Lot 101 Deposited Plan 592929	Fee Simple Title	0.0086 Ha	Multiple
Lot 102 Deposited Plan 592929	Fee Simple Title	0.0293 Ha	Multiple
Area A Deposited Plan 592929	Easement		
Area B Deposited Plan 592929	Easement		
Area C Deposited Plan 592929	Easement		
Area D Deposited Plan 592929	Easement		
Area E Deposited Plan 592929	Easement		
Area F Deposited Plan 592929	Easement		
Area G Deposited Plan 592929	Easement		
Area H Deposited Plan 592929	Easement		
Area I Deposited Plan 592929	Easement		
Area J Deposited Plan 592929	Easement		
Area K Deposited Plan 592929	Easement		
Area L Deposited Plan 592929	Easement		
Area M Deposited Plan 592929	Easement		
Area N Deposited Plan 592929	Easement		
Area O Deposited Plan 592929	Easement		
Area P Deposited Plan 592929	Easement		
Area Q Deposited Plan 592929	Easement		



Record of Survey - DP 592929

Created Parcels

Parcels	Parcel Intent	Area	RT Reference
Area R Deposited Plan 592929	Easement		
Area S Deposited Plan 592929	Easement		
Area T Deposited Plan 592929	Easement		
Area U Deposited Plan 592929	Easement		
Area V Deposited Plan 592929	Easement		
Area W Deposited Plan 592929	Easement		
Area X Deposited Plan 592929	Easement		
Area Y Deposited Plan 592929	Easement		
Area Z Deposited Plan 592929	Easement		
Area XZ Deposited Plan 592929	Easement		
Area WY Deposited Plan 592929	Easement		
Area AA Deposited Plan 592929	Easement		
Area AB Deposited Plan 592929	Easement		
Height-Limited Area AC Deposited Plan 592929	Easement		
Area AD Deposited Plan 592929	Easement		
Area AE Deposited Plan 592929	Easement		
Area AF Deposited Plan 592929	Easement		
Area AH Deposited Plan 592929	Easement		
Area AJ Deposited Plan 592929	Easement		
Total Area		<hr/> 0.2416 Ha	

Mark and Vector

Survey Number DP 592929

Meridional Circuit Mount Eden 2000

From	To	Code	Bearing	Adpt Surv	Bearing Correction	Distance	Adpt Surv	Class
1880 SO 48445	SS 1881 SO 48445	ob0	238°39'15" M			124.905 M		
SS 1881 SO 48445	AP 1 DP 592929	ob2	238°39'15" M			82.63 M		
AP 1 DP 592929	AP 3 DP 592929	ob4	265°17'00" M			44.82 M		
AP 3 DP 592929	AP 4 DP 592929	ob6	231°31'00" M			13.32 M		
AP 4 DP 592929	AP 5 DP 592929	ob7	231°31'00" M			20.18 M		
AP 5 DP 592929	AP 6 DP 592929	ob10	231°31'00" M			27.74 M		
AP 6 DP 592929	IS 7 DP 592929	ob16	160°00'50" M			21.71 M		
IS 7 DP 592929	IS 8 DP 592929	ob19	160°00'50" M			21.50 M		
IS 8 DP 592929	IT III DP 178608	ob22	160°00'50" M			57.35 M		
IT III DP 178608	AP 2 DP 592929	ob30	60°35'40" M			105.85 M		
AP 2 DP 592929	AP 15 DP 592929	ob31	147°53'00" M			52.46 M		
AP 15 DP 592929	IS I DP 160523	ob32	138°40'30" M			42.04 M		
IS I DP 160523	IT XVIA DP 56375	ob33	143°04'30" M			46.96 M		
AP 1 DP 592929	AP 2 DP 592929	ob5	158°03'00" M			90.91 M		
SS 1881 SO 48445	1885 SO 48445	ob3	148°39'12" M			98.315 M		
AP 6 DP 592929	IT XLI DP 56375	ob17	249°24'00" M			34.88 M		
IT XLI DP 56375	IS 7 DP 592929	ob34	101°28'00" M			40.89 M		
AP 6 DP 592929	IT III DP 184043	ob18	159°42'20" M			83.52 M		
IT III DP 184043	IT III DP 178608	ob36	161°32'00" M			17.05 M		
IT XVIA DP 56375	AP 5 DP 501461	ob1	188°19'50" M			19.80 M		
AP 5 DP 501461	IS I DP 160523	ob38	336°04'30" A	DP 501461	0°00'00"	62.51 A	DP 501461	
AP 5 DP 592929	AP 11 DP 592929	ob11	139°44'00" M			34.13 M		
AP 11 DP 592929	AP 12 DP 592929	ob40	162°38'00" M			22.77 M		
AP 12 DP 592929	AP 13 DP 592929	ob55	162°38'00" M			10.67 M		
AP 13 DP 592929	IS 8 DP 592929	ob68	270°08'00" M			38.99 M		
AP 4 DP 592929	IT 14 DP 592929	ob8	149°19'30" M			57.14 M		
IT 14 DP 592929	AP 12 DP 592929	ob82	235°11'00" M			19.60 M		
IT XLI DP 56375	PEG (24) DP 56375	ob35	58°41'30" A	DP 56375	0°00'00"	38.14 A	DP 56375	
PEG (24) DP 56375	PEG 25 DP 592929	ob88	120°33'00" A	DP 56375	0°00'00"	26.85 A	DP 56375	
PEG 25 DP 592929	DISK 27 DP 592929	ob89	69°55'00" A	DP 56375	0°00'00"	11.10 A	DP 56375	Class A

Mark and Vector

Survey Number DP 592929

Meridional Circuit Mount Eden 2000

From	To	Code	Bearing	Adpt Surv	Bearing Correction	Distance	Adpt Surv	Class
DISK 27 DP 592929	DISK 28 DP 592929	ob91	26°56'40"	A DP 56375	0°00'00"	0.35 C		Class A
DISK 28 DP 592929	UNMK 88 DP 592929	ob92	26°56'40"	A DP 56375	0°00'00"	0.30 C		Class A
UNMK 88 DP 592929	DISK 29 DP 592929	ob165	26°56'40"	A DP 56375	0°00'00"	6.12 C		Class A
DISK 29 DP 592929	UNMK 111 DP 592929	ob94	26°56'40"	A DP 56375	0°00'00"	2.80 C		Class A
UNMK 111 DP 592929	DISK 30 DP 592929	ob203	26°56'40"	A DP 56375	0°00'00"	4.56 C		Class A
DISK 30 DP 592929	DISK 31 DP 592929	ob96	26°56'40"	A DP 56375	0°00'00"	6.00 C		Class A
DISK 31 DP 592929	PEG (32) DP 56375	ob98	58°41'30"	A DP 56375	0°00'00"	3.05 A DP 56375		Class A
PEG (32) DP 56375	IS XXX DP 56375	ob100	58°41'30"	A DP 56375	0°00'00"	37.62 A DP 56375		
IS XXX DP 56375	IS XX DP 56375	ob101	148°41'15"	A DP 56375	0°00'00"	3.66 A DP 56375		
IS XX DP 56375	SS 1881 SO 48445	ob102	58°39'15"	A DP 56375	0°00'00"	98.24 A DP 56375		
IT III DP 184043	PIPE DP 184043	ob37	346°16'00"	A DP 184043	0°00'00"	17.48 A DP 184043		
PIPE DP 184043	PEG 108 DP 592929	ob104	59°29'40"	A DP 184043	0°00'00"	1.00 C		Class A
PEG 108 DP 592929	PEG 36 DP 592929	ob201	59°29'40"	A DP 184043	0°00'00"	14.77 C		Class A
PEG 37 DP 592929	DISK (38) DP 184043	ob106	59°29'40"	A DP 184043	0°00'00"	26.02 C		Class A
DISK (38) DP 184043	LP V DP 184043	ob108	162°33'00"	A DP 184043	0°00'00"	15.14 A DP 184043		
LP V DP 184043	AIP I DP 184043	ob109	57°36'10"	A DP 184043	0°00'00"	42.11 A DP 184043		
AIP I DP 184043	CP I DP 142799	ob110	147°57'30"	A DP 184043	0°00'00"	39.47 A DP 184043		
CP I DP 142799	IS I DP 160523	ob111	143°04'30"	A DP 160523	0°00'00"	76.83 A DP 160523		
UNMK 42 DP 592929	UNMK 113 DP 592929	ob112	148°41'15"	A DP 56375	0°00'00"	5.55 C		Class A
DISK 43 DP 592929	DISK 44 DP 592929	ob113	148°41'15"	A DP 56375	0°00'00"	9.92 C		Class A
DISK 44 DP 592929	PEG 45 DP 592929	ob114	148°41'15"	A DP 56375	0°00'00"	4.60 C		Class A
PEG 45 DP 592929	DISK 46 DP 592929	ob115	148°41'15"	A DP 56375	0°00'00"	4.60 C		Class A
DISK 46 DP 592929	DISK 47 DP 592929	ob116	148°41'15"	A DP 56375	0°00'00"	4.60 C		Class A
DISK 47 DP 592929	DISK (38) DP 184043	ob117	148°41'15"	A DP 56375	0°00'00"	8.20 C		Class A
PEG 25 DP 592929	PEG 48 DP 592929	ob90	186°15'00"	A DP 56375	0°00'00"	8.01 C		Class A

Mark and Vector

Survey Number DP 592929

Meridional Circuit Mount Eden 2000

From	To	Code	Bearing	Adpt Surv	Bearing Correction	Distance	Adpt Surv	Class
PEG 48 DP 592929	PEG 49 DP 592929	ob118	186°15'00"	A DP 56375	0°00'00"	6.06 C		Class A
PEG 49 DP 592929	PEG 50 DP 592929	ob120	186°15'00"	A DP 56375	0°00'00"	6.05 C		Class A
PEG 50 DP 592929	PEG 51 DP 592929	ob122	186°15'00"	A DP 56375	0°00'00"	6.05 C		Class A
PEG 51 DP 592929	PEG 52 DP 592929	ob124	186°15'00"	A DP 56375	0°00'00"	6.05 C		Class A
PEG 52 DP 592929	PEG 53 DP 592929	ob126	186°15'00"	A DP 56375	0°00'00"	6.06 C		Class A
PEG 53 DP 592929	PEG 54 DP 592929	ob128	186°15'00"	A DP 56375	0°00'00"	1.02 C		Class A
PEG 54 DP 592929	DISK 31 DP 592929	ob130	21°24'00"	A DP 56375	0°00'00"	65.33 A	DP 56375	
DISK 29 DP 592929	UNMK 81 DP 592929	ob95	148°41'15"	C		1.07 C		Class A
UNMK 81 DP 592929	DISK 55 DP 592929	ob195	148°41'15"	C		11.38 C		Class A
DISK 55 DP 592929	UNMK 138 DP 592929	ob132	148°41'15"	C		5.55 C		Class A
DISK 56 DP 592929	DISK 57 DP 592929	ob134	148°41'15"	C		5.74 C		Class A
DISK 57 DP 592929	DISK 58 DP 592929	ob136	186°15'00"	C		4.46 C		Class A
DISK 58 DP 592929	DISK 59 DP 592929	ob137	186°15'00"	C		1.45 C		Class A
DISK 59 DP 592929	DISK 60 DP 592929	ob139	148°41'15"	C		4.09 C		Class A
DISK 60 DP 592929	UNMK 105 DP 592929	ob140	148°41'15"	C		3.40 C		Class A
UNMK 105 DP 592929	DISK 61 DP 592929	ob198	148°41'15"	C		1.20 C		Class A
DISK 61 DP 592929	DISK 62 DP 592929	ob142	148°41'15"	C		4.60 C		Class A
DISK 62 DP 592929	DISK 63 DP 592929	ob144	148°41'15"	C		1.39 C		Class A
DISK 63 DP 592929	DISK 64 DP 592929	ob146	238°41'15"	C		3.05 C		Class A
DISK 64 DP 592929	PEG 37 DP 592929	ob147	186°15'00"	C		8.12 C		Class A
DISK 28 DP 592929	UNMK 120 DP 592929	ob93	148°41'15"	C		13.30 C		Class A
UNMK 120 DP 592929	DISK 65 DP 592929	ob223	148°41'15"	C		0.10 C		Class A
DISK 65 DP 592929	UNMK 121 DP 592929	ob148	148°41'15"	C		0.25 C		Class A
UNMK 121 DP 592929	DISK 75 DP 592929	ob224	148°41'15"	C		3.28 C		Class A

Mark and Vector

Survey Number DP 592929

Meridional Circuit Mount Eden 2000

From	To	Code	Bearing	Adpt Surv	Bearing Correction	Distance	Adpt Surv	Class
UNMK 122 DP 592929	DISK 75 DP 592929	ob225	6°15'00"	C		5.80 C		Class A
DISK 66 DP 592929	UNMK 122 DP 592929	ob149	6°15'00"	C		0.10 C		Class A
UNMK 123 DP 592929	DISK 66 DP 592929	ob226	6°15'00"	C		0.25 C		Class A
UNMK 124 DP 592929	UNMK 123 DP 592929	ob227	6°15'00"	C		5.70 C		Class A
DISK 67 DP 592929	UNMK 124 DP 592929	ob150	6°15'00"	C		0.10 C		Class A
UNMK 125 DP 592929	DISK 67 DP 592929	ob228	6°15'00"	C		0.25 C		Class A
UNMK 126 DP 592929	UNMK 125 DP 592929	ob229	6°15'00"	C		5.70 C		Class A
DISK 68 DP 592929	UNMK 126 DP 592929	ob151	6°15'00"	C		0.10 C		Class A
UNMK 127 DP 592929	DISK 68 DP 592929	ob230	6°15'00"	C		0.25 C		Class A
DISK 69 DP 592929	UNMK 128 DP 592929	ob152	6°15'00"	C		0.10 C		Class A
DISK 70 DP 592929	UNMK 136 DP 592929	ob153	6°15'00"	C		0.10 C		Class A
DISK 62 DP 592929	UNMK 77 DP 592929	ob145	58°41'15"	C		1.20 C		Class A
UNMK 77 DP 592929	UNMK 174 DP 592929	ob188	58°41'15"	C		1.95 C		Class A
UNMK 174 DP 592929	UNMK 177 DP 592929	ob280	58°41'15"	C		12.70 C		Class A
UNMK 177 DP 592929	DISK 47 DP 592929	ob283	58°41'15"	C		2.17 C		Class A
DISK 61 DP 592929	UNMK 78 DP 592929	ob143	58°41'15"	C		1.20 C		Class A
UNMK 78 DP 592929	UNMK 195 DP 592929	ob190	58°41'15"	C		3.71 C		Class A
UNMK 195 DP 592929	UNMK 196 DP 592929	ob302	58°41'15"	C		10.93 C		Class A
UNMK 196 DP 592929	DISK 46 DP 592929	ob305	58°41'15"	C		2.18 C		Class A
DISK 60 DP 592929	UNMK 79 DP 592929	ob141	58°41'15"	C		1.20 C		Class A
UNMK 79 DP 592929	UNMK 160 DP 592929	ob192	58°41'15"	C		3.71 C		Class A
UNMK 160 DP 592929	UNMK 161 DP 592929	ob258	58°41'15"	C		10.93 C		Class A
UNMK 161 DP 592929	PEG 45 DP 592929	ob261	58°41'15"	C		2.18 C		Class A
DISK 58 DP 592929	DISK 71 DP 592929	ob138	148°41'00"	C		0.64 C		Class A

Mark and Vector

Survey Number DP 592929

Meridional Circuit Mount Eden 2000

From	To	Code	Bearing	Adpt Surv	Bearing Correction	Distance	Adpt Surv	Class
DISK 71 DP 592929	UNMK 80 DP 592929	ob154	58°41'15"	C		0.32 C		Class A
UNMK 80 DP 592929	UNMK 169 DP 592929	ob194	58°41'15"	C		3.14 C		Class A
UNMK 169 DP 592929	UNMK 170 DP 592929	ob273	58°41'15"	C		4.73 C		Class A
UNMK 170 DP 592929	UNMK 72 DP 592929	ob276	58°41'15"	C		0.13 C		Class A
UNMK 172 DP 592929	DISK 44 DP 592929	ob277	58°41'15"	C		2.15 C		Class A
DISK 56 DP 592929	UNMK 142 DP 592929	ob135	58°41'15"	C		1.80 C		Class A
UNMK 142 DP 592929	UNMK 167 DP 592929	ob316	58°41'15"	C		3.68 C		Class A
UNMK 167 DP 592929	DISK 73 DP 592929	ob269	58°41'15"	C		0.13 C		Class A
DISK 73 DP 592929	UNMK 168 DP 592929	ob157	58°41'15"	C		0.13 C		Class A
UNMK 168 DP 592929	DISK 43 DP 592929	ob271	58°41'15"	C		8.68 C		Class A
DISK 73 DP 592929	UNMK 173 DP 592929	ob158	148°41'00"	C		9.79 C		Class A
UNMK 173 DP 592929	UNMK 72 DP 592929	ob278	148°41'00"	C		0.13 C		Class A
DISK 55 DP 592929	UNMK 220 DP 592929	ob133	58°41'15"	C		1.43 C		Class A
UNMK 205 DP 592929	UNMK 163 DP 592929	ob317	58°41'15"	C		4.33 C		Class A
UNMK 163 DP 592929	DISK 74 DP 592929	ob265	58°41'15"	C		0.13 C		Class A
DISK 74 DP 592929	UNMK 164 DP 592929	ob159	58°41'15"	C		0.13 C		Class A
UNMK 164 DP 592929	UNMK 221 DP 592929	ob266	58°41'15"	C		4.71 C		Class A
DISK 107 DP 592929	UNMK 42 DP 592929	ob200	58°41'15"	C		0.50 C		Class A
DISK 30 DP 592929	UNMK 83 DP 592929	ob97	148°41'15"	C		1.21 C		Class A
UNMK 162 DP 592929	DISK 74 DP 592929	ob262	148°41'15"	C		10.02 C		Class A
PEG 53 DP 592929	UNMK 89 DP 592929	ob129	96°15'00"	C		4.37 C		Class A
UNMK 89 DP 592929	DISK 70 DP 592929	ob205	96°15'00"	C		16.03 C		Class A
PEG 52 DP 592929	UNMK 115 DP 592929	ob127	96°15'00"	C		4.37 C		Class A
PEG 51 DP 592929	UNMK 116 DP 592929	ob125	96°15'00"	C		4.37 C		Class A

Mark and Vector

Survey Number DP 592929

Meridional Circuit Mount Eden 2000

From	To	Code	Bearing	Adpt Surv	Bearing Correction	Distance	Adpt Surv	Class
UNMK 116 DP 592929	DISK 68 DP 592929	ob211	96°15'00"	C		16.03 C		Class A
PEG 50 DP 592929	UNMK 117 DP 592929	ob123	96°15'00"	C		4.37 C		Class A
UNMK 117 DP 592929	DISK 67 DP 592929	ob214	96°15'00"	C		16.03 C		Class A
PEG 49 DP 592929	UNMK 118 DP 592929	ob121	96°15'00"	C		4.37 C		Class A
UNMK 118 DP 592929	DISK 66 DP 592929	ob217	96°15'00"	C		16.03 C		Class A
PEG 48 DP 592929	UNMK 119 DP 592929	ob119	96°15'00"	C		4.37 C		Class A
UNMK 119 DP 592929	UNMK 76 DP 592929	ob220	96°15'00"	C		10.43 C		Class A
PEG 54 DP 592929	PIPE DP 184043	ob131	159°32'00"	C		17.27 C		Class A
DISK 114 DP 592929	DISK 91 DP 592929	ob204	96°22'00"	C		5.00 C		Class A
DISK 91 DP 592929	DISK 92 DP 592929	ob167	6°22'00"	C		2.50 C		Class A
DISK 92 DP 592929	DISK 93 DP 592929	ob168	6°22'00"	C		2.50 C		Class A
DISK 93 DP 592929	DISK 94 DP 592929	ob169	6°22'00"	C		2.50 C		Class A
DISK 94 DP 592929	DISK 95 DP 592929	ob170	6°22'00"	C		2.50 C		Class A
DISK 95 DP 592929	DISK 96 DP 592929	ob171	6°22'00"	C		2.50 C		Class A
DISK 96 DP 592929	DISK 97 DP 592929	ob172	6°22'00"	C		2.50 C		Class A
DISK 97 DP 592929	DISK 98 DP 592929	ob173	276°22'00"	C		5.00 C		Class A
DISK 98 DP 592929	DISK 99 DP 592929	ob174	186°22'00"	C		2.50 C		Class A
DISK 99 DP 592929	DISK 100 DP 592929	ob175	186°22'00"	C		2.50 C		Class A
DISK 100 DP 592929	DISK 101 DP 592929	ob177	186°22'00"	C		2.50 C		Class A
DISK 101 DP 592929	DISK 102 DP 592929	ob179	186°22'00"	C		2.50 C		Class A
DISK 102 DP 592929	DISK 103 DP 592929	ob181	186°22'00"	C		2.50 C		Class A
DISK 103 DP 592929	DISK 114 DP 592929	ob183	186°22'00"	C		2.50 C		Class A
DISK 103 DP 592929	DISK 92 DP 592929	ob184	96°22'00"	C		5.00 C		Class A
DISK 102 DP 592929	DISK 93 DP 592929	ob182	96°22'00"	C		5.00 C		Class A

Mark and Vector

Survey Number DP 592929

Meridional Circuit Mount Eden 2000

From	To	Code	Bearing	Adpt Surv	Bearing Correction	Distance	Adpt Surv	Class
DISK 101 DP 592929	DISK 94 DP 592929	ob180	96°22'00"	C		5.00 C		Class A
DISK 100 DP 592929	DISK 95 DP 592929	ob178	96°22'00"	C		5.00 C		Class A
DISK 99 DP 592929	DISK 96 DP 592929	ob176	96°22'00"	C		5.00 C		Class A
IS XX DP 56375	PEG (104) DP 184043	ob103	148°41'15"	A DP 184043	0°00'00"	86.86 A DP 184043		
PEG (104) DP 184043	PEG (106) DP 142799	ob185	148°41'15"	A DP 142799	0°00'00"	3.05 A DP 142799		
PEG (106) DP 142799	AP 15 DP 592929	ob186	146°58'30"	M		52.28 M		
PEG (106) DP 142799	AP 2 DP 592929	ob187	44°22'00"	M		0.87 M		
UNMK 77 DP 592929	UNMK 78 DP 592929	ob189	328°41'00"	C		4.60 C		Class A
UNMK 78 DP 592929	UNMK 90 DP 592929	ob191	328°41'00"	C		1.20 C		Class A
UNMK 90 DP 592929	UNMK 79 DP 592929	ob197	328°41'00"	C		3.40 C		Class A
UNMK 79 DP 592929	UNMK 80 DP 592929	ob193	328°44'00"	C		4.60 C		Class A
UNMK 81 DP 592929	UNMK 109 DP 592929	ob196	27°53'00"	C		3.36 C		Class A
UNMK 105 DP 592929	UNMK 90 DP 592929	ob199	58°41'00"	C		1.20 C		Class A
IT 14 DP 592929	DISK 43 DP 592929	ob83	331°00'00"	M		16.95 M		
IT 14 DP 592929	DISK 44 DP 592929	ob84	334°16'00"	M		7.05 M		
IT 14 DP 592929	PEG 45 DP 592929	ob85	344°31'00"	M		2.51 M		
IT 14 DP 592929	DISK 46 DP 592929	ob86	131°18'00"	M		2.29 M		
IT 14 DP 592929	DISK 47 DP 592929	ob87	142°55'00"	M		6.82 M		
AP 5 DP 592929	DISK 31 DP 592929	ob12	94°23'00"	M		20.96 M		
AP 5 DP 592929	DISK 30 DP 592929	ob13	110°56'00"	M		19.46 M		
AP 5 DP 592929	DISK 29 DP 592929	ob14	132°19'00"	M		20.07 M		
AP 5 DP 592929	DISK 27 DP 592929	ob15	148°56'00"	M		22.82 M		
IS 7 DP 592929	PEG 48 DP 592929	ob20	66°46'00"	M		16.07 M		
IS 7 DP 592929	PEG 49 DP 592929	ob21	88°43'00"	M		14.11 M		

Mark and Vector

Survey Number DP 592929

Meridional Circuit Mount Eden 2000

From	To	Code	Bearing	Adpt Surv	Bearing Correction	Distance	Adpt Surv	Class
IS 8 DP 592929	PEG 50 DP 592929	ob23	22°49'00" M			15.74 M		
IS 8 DP 592929	PEG 51 DP 592929	ob24	32°39'00" M			10.09 M		
IS 8 DP 592929	PEG 52 DP 592929	ob25	62°36'00" M			5.39 M		
IS 8 DP 592929	PEG 53 DP 592929	ob26	130°41'00" M			5.44 M		
IS 8 DP 592929	PEG 54 DP 592929	ob27	138°34'00" M			6.08 M		
IS 8 DP 592929	PIPE DP 184043	ob28	154°09'00" C			23.05 C		
IS 8 DP 592929	PEG 108 DP 592929	ob29	151°40'00" M			22.99 M		
UNMK 119 DP 592929	UNMK 130 DP 592929	ob221	6°15'00" C			0.10 C		Class A
UNMK 130 DP 592929	UNMK 131 DP 592929	ob233	96°15'00" C			10.40 C		Class A
UNMK 131 DP 592929	UNMK 120 DP 592929	ob234	58°41'00" C			4.30 C		Class A
UNMK 119 DP 592929	UNMK 132 DP 592929	ob222	186°15'00" C			0.10 C		Class A
UNMK 132 DP 592929	UNMK 133 DP 592929	ob235	96°15'00" C			10.47 C		Class A
UNMK 133 DP 592929	UNMK 137 DP 592929	ob236	58°41'00" C			0.70 C		Class A
UNMK 118 DP 592929	UNMK 134 DP 592929	ob218	6°15'00" C			0.10 C		Class A
UNMK 134 DP 592929	UNMK 122 DP 592929	ob237	96°15'00" C			16.03 C		Class A
UNMK 118 DP 592929	UNMK 143 DP 592929	ob219	186°15'00" C			0.10 C		Class A
UNMK 143 DP 592929	UNMK 144 DP 592929	ob241	96°15'00" C			10.57 C		Class A
UNMK 144 DP 592929	UNMK 145 DP 592929	ob242	186°15'00" C			0.15 C		Class A
UNMK 145 DP 592929	UNMK 123 DP 592929	ob243	96°15'00" C			5.46 C		Class A
UNMK 117 DP 592929	UNMK 146 DP 592929	ob215	6°15'00" C			0.10 C		Class A
UNMK 146 DP 592929	UNMK 124 DP 592929	ob244	96°15'00" C			16.03 C		Class A
UNMK 117 DP 592929	UNMK 147 DP 592929	ob216	186°15'00" C			0.10 C		Class A
UNMK 147 DP 592929	UNMK 148 DP 592929	ob245	96°15'00" C			10.57 C		Class A
UNMK 148 DP 592929	UNMK 149 DP 592929	ob246	186°15'00" C			0.15 C		Class A

Mark and Vector

Survey Number DP 592929

Meridional Circuit Mount Eden 2000

From	To	Code	Bearing	Adpt Surv	Bearing Correction	Distance	Adpt Surv	Class
UNMK 149 DP 592929	UNMK 125 DP 592929	ob247	96°15'00"	C		5.46 C		Class A
UNMK 116 DP 592929	UNMK 150 DP 592929	ob212	6°15'00"	C		0.10 C		Class A
UNMK 150 DP 592929	UNMK 126 DP 592929	ob248	96°15'00"	C		16.03 C		Class A
UNMK 116 DP 592929	UNMK 151 DP 592929	ob213	186°15'00"	C		0.10 C		Class A
UNMK 151 DP 592929	UNMK 152 DP 592929	ob249	96°15'00"	C		10.57 C		Class A
UNMK 152 DP 592929	UNMK 153 DP 592929	ob250	186°15'00"	C		0.15 C		Class A
UNMK 153 DP 592929	UNMK 127 DP 592929	ob251	96°15'00"	C		5.46 C		Class A
UNMK 115 DP 592929	UNMK 154 DP 592929	ob209	6°15'00"	C		0.10 C		Class A
UNMK 154 DP 592929	UNMK 128 DP 592929	ob252	96°15'00"	C		16.03 C		Class A
UNMK 115 DP 592929	UNMK 155 DP 592929	ob210	186°15'00"	C		0.10 C		Class A
UNMK 155 DP 592929	UNMK 156 DP 592929	ob253	96°15'00"	C		10.57 C		Class A
UNMK 156 DP 592929	UNMK 157 DP 592929	ob254	186°15'00"	C		0.15 C		Class A
UNMK 157 DP 592929	UNMK 129 DP 592929	ob255	96°15'00"	C		5.46 C		Class A
UNMK 89 DP 592929	UNMK 158 DP 592929	ob206	6°15'00"	C		0.10 C		Class A
UNMK 158 DP 592929	UNMK 136 DP 592929	ob256	96°15'00"	C		16.03 C		Class A
UNMK 89 DP 592929	UNMK 159 DP 592929	ob207	186°15'00"	C		0.10 C		Class A
UNMK 159 DP 592929	UNMK 135 DP 592929	ob257	96°15'00"	C		16.03 C		Class A
UNMK 162 DP 592929	UNMK 165 DP 592929	ob263	58°41'00"	C		0.13 C		Class A
UNMK 165 DP 592929	UNMK 164 DP 592929	ob267	148°41'00"	C		10.02 C		Class A
UNMK 162 DP 592929	UNMK 166 DP 592929	ob264	238°41'00"	C		0.13 C		Class A
UNMK 166 DP 592929	UNMK 163 DP 592929	ob268	148°41'00"	C		10.02 C		Class A
UNMK 167 DP 592929	UNMK 178 DP 592929	ob270	148°41'00"	C		9.79 C		Class A
UNMK 178 DP 592929	UNMK 170 DP 592929	ob284	148°41'00"	C		0.13 C		Class A
UNMK 168 DP 592929	UNMK 179 DP 592929	ob272	148°41'00"	C		9.79 C		Class A

Mark and Vector

Survey Number DP 592929

Meridional Circuit Mount Eden 2000

From	To	Code	Bearing	Adpt Surv	Bearing Correction	Distance	Adpt Surv	Class
DISK 75 DP 592929	UNMK 85 DP 592929	ob160	93°54'00"	C		0.32 C		Class A
UNMK 85 DP 592929	UNMK 86 DP 592929	ob288	93°54'00"	C		0.23 C		Class A
UNMK 86 DP 592929	DISK 57 DP 592929	ob289	93°54'00"	C		6.13 C		Class A
UNMK 88 DP 592929	UNMK 85 DP 592929	ob166	148°41'00"	C		17.27 C		Class A
UNMK 82 DP 592929	UNMK 86 DP 592929	ob162	6°15'00"	C		36.74 C		Class A
UNMK 169 DP 592929	UNMK 181 DP 592929	ob274	148°41'00"	C		0.13 C		Class A
UNMK 187 DP 592929	UNMK 188 DP 592929	ob294	328°41'00"	C		0.25 C		Class A
UNMK 188 DP 592929	UNMK 189 DP 592929	ob295	58°41'00"	C		1.98 C		Class A
UNMK 189 DP 592929	UNMK 216 DP 592929	ob296	148°41'00"	C		0.25 C		Class A
UNMK 169 DP 592929	UNMK 190 DP 592929	ob275	328°41'00"	C		0.13 C		Class A
UNMK 190 DP 592929	UNMK 178 DP 592929	ob297	58°41'00"	C		4.73 C		Class A
UNMK 178 DP 592929	UNMK 173 DP 592929	ob285	58°41'00"	C		0.13 C		Class A
UNMK 173 DP 592929	UNMK 179 DP 592929	ob279	58°41'00"	C		0.13 C		Class A
UNMK 179 DP 592929	UNMK 187 DP 592929	ob287	58°41'00"	C		4.55 C		Class A
UNMK 160 DP 592929	UNMK 191 DP 592929	ob259	328°41'00"	C		0.10 C		Class A
UNMK 191 DP 592929	UNMK 192 DP 592929	ob298	58°41'00"	C		10.93 C		Class A
UNMK 192 DP 592929	UNMK 161 DP 592929	ob299	148°41'00"	C		0.10 C		Class A
UNMK 160 DP 592929	UNMK 193 DP 592929	ob260	148°41'00"	C		0.10 C		Class A
UNMK 193 DP 592929	UNMK 194 DP 592929	ob300	58°41'00"	C		10.93 C		Class A
UNMK 194 DP 592929	UNMK 161 DP 592929	ob301	328°41'00"	C		0.10 C		Class A
UNMK 195 DP 592929	UNMK 197 DP 592929	ob303	328°41'00"	C		0.10 C		Class A
UNMK 197 DP 592929	UNMK 198 DP 592929	ob306	58°41'00"	C		10.93 C		Class A
UNMK 198 DP 592929	UNMK 196 DP 592929	ob307	148°41'00"	C		0.10 C		Class A
UNMK 195 DP 592929	UNMK 199 DP 592929	ob304	148°41'00"	C		0.10 C		Class A

Mark and Vector

Survey Number DP 592929

Meridional Circuit Mount Eden 2000

From	To	Code	Bearing	Adpt Surv	Bearing Correction	Distance	Adpt Surv	Class
UNMK 199 DP 592929	UNMK 200 DP 592929	ob308	58°41'00"	C		10.93 C		Class A
UNMK 200 DP 592929	UNMK 196 DP 592929	ob309	328°41'00"	C		0.10 C		Class A
UNMK 174 DP 592929	UNMK 201 DP 592929	ob281	328°41'00"	C		0.10 C		Class A
UNMK 201 DP 592929	UNMK 202 DP 592929	ob310	58°41'00"	C		12.70 C		Class A
UNMK 202 DP 592929	UNMK 177 DP 592929	ob311	148°41'00"	C		0.10 C		Class A
UNMK 174 DP 592929	UNMK 203 DP 592929	ob282	148°41'00"	C		0.10 C		Class A
UNMK 203 DP 592929	UNMK 204 DP 592929	ob313	58°41'00"	C		12.70 C		Class A
UNMK 204 DP 592929	UNMK 177 DP 592929	ob314	328°41'00"	C		0.10 C		Class A
AP 11 DP 592929	DISK 55 DP 592929	ob41	338°28'00"	M		2.03 M		
AP 11 DP 592929	DISK 74 DP 592929	ob42	41°49'00"	M		6.90 M		
AP 11 DP 592929	DISK 107 DP 592929	ob43	50°41'00"	M		14.40 M		
AP 11 DP 592929	UNMK 42 DP 592929	ob44	50°57'00"	C		14.89 C		
AP 11 DP 592929	DISK 43 DP 592929	ob45	73°44'00"	M		15.28 M		
AP 11 DP 592929	DISK 73 DP 592929	ob46	92°22'00"	M		7.15 M		
AP 11 DP 592929	DISK 56 DP 592929	ob47	143°43'00"	M		3.98 M		
AP 11 DP 592929	DISK 57 DP 592929	ob48	146°39'00"	M		9.72 M		
AP 11 DP 592929	DISK 58 DP 592929	ob49	158°51'00"	M		13.46 M		
AP 11 DP 592929	DISK 75 DP 592929	ob50	189°50'00"	M		7.77 M		
AP 11 DP 592929	DISK 65 DP 592929	ob51	214°16'00"	M		5.62 M		
AP 12 DP 592929	DISK 71 DP 592929	ob56	349°27'00"	M		8.78 M		
AP 12 DP 592929	DISK 60 DP 592929	ob57	0°22'00"	M		4.25 M		
AP 12 DP 592929	DISK 97 DP 592929	ob58	79°37'00"	M		2.05 M		
AP 12 DP 592929	DISK 61 DP 592929	ob59	82°35'00"	M		2.44 M		
AP 12 DP 592929	DISK 62 DP 592929	ob60	126°56'00"	M		6.02 M		

Mark and Vector

Survey Number DP 592929

Meridional Circuit Mount Eden 2000

From	To	Code	Bearing	Adpt Surv	Bearing Correction	Distance	Adpt Surv	Class
AP 12 DP 592929	DISK 63 DP 592929	ob61	130°58'00" M			7.33 M		
AP 12 DP 592929	DISK 96 DP 592929	ob62	140°38'00" M			2.74 M		
AP 12 DP 592929	DISK 95 DP 592929	ob63	162°25'00" M			4.83 M		
AP 12 DP 592929	DISK 100 DP 592929	ob64	220°57'00" M			5.36 M		
AP 12 DP 592929	DISK 68 DP 592929	ob65	249°14'00" M			10.78 M		
AP 12 DP 592929	DISK 67 DP 592929	ob66	283°05'00" M			9.68 M		
AP 12 DP 592929	DISK 98 DP 592929	ob67	287°20'00" M			3.10 M		
AP 13 DP 592929	DISK 64 DP 592929	ob69	356°06'00" M			3.80 M		
AP 13 DP 592929	PEG 37 DP 592929	ob70	194°56'00" M			4.43 M		
AP 13 DP 592929	DISK 91 DP 592929	ob71	213°04'00" M			5.20 M		
AP 13 DP 592929	PEG 36 DP 592929	ob72	230°31'00" M			19.89 M		
AP 13 DP 592929	DISK 92 DP 592929	ob73	233°50'00" M			3.17 M		
AP 13 DP 592929	DISK 114 DP 592929	ob74	244°02'00" M			8.68 M		
AP 13 DP 592929	DISK 70 DP 592929	ob75	248°44'00" M			15.65 M		
AP 13 DP 592929	DISK 103 DP 592929	ob76	260°05'00" M			7.64 M		
AP 13 DP 592929	DISK 69 DP 592929	ob77	271°25'00" M			13.93 M		
AP 13 DP 592929	DISK 102 DP 592929	ob78	279°09'00" M			7.34 M		
AP 13 DP 592929	DISK 101 DP 592929	ob79	297°39'00" M			7.87 M		
AP 13 DP 592929	DISK 94 DP 592929	ob80	327°06'00" M			3.69 M		
AP 13 DP 592929	DISK 93 DP 592929	ob81	285°04'00" M			2.36 M		
UNMK 137 DP 592929	UNMK 180 DP 592929	ob240	148°41'00" C			0.15 C		Class A
UNMK 180 DP 592929	UNMK 121 DP 592929	ob318	58°41'00" C			3.67 C		Class A
PEG 37 DP 592929	PEG (87) DP 184043	ob107	239°29'40" A	DP 184043	0°00'00"	2.32 C		Class A
PEG (87) DP 184043	UNMK 82 DP 592929	ob164	239°29'40" A	DP 184043	0°00'00"	13.49 C		Class A

Mark and Vector

Survey Number DP 592929

Meridional Circuit Mount Eden 2000

From	To	Code	Bearing	Adpt Surv	Bearing Correction	Distance	Adpt Surv	Class
UNMK 82 DP 592929	PEG 36 DP 592929	ob163	239°29'40"	A DP 184043	0°00'00"	0.68 C		Class A
PEG 36 DP 592929	UNMK 135 DP 592929	ob105	6°15'00"	C		6.91 C		Class A
UNMK 135 DP 592929	DISK 70 DP 592929	ob238	6°15'00"	C		0.10 C		Class A
UNMK 136 DP 592929	UNMK 129 DP 592929	ob239	6°15'00"	C		5.71 C		Class A
UNMK 129 DP 592929	DISK 69 DP 592929	ob232	6°15'00"	C		0.25 C		Class A
UNMK 128 DP 592929	UNMK 127 DP 592929	ob231	6°15'00"	C		5.70 C		Class A
AP 12 DP 592929	DISK 99 DP 592929	ob52	244°14'00"	M		3.59 M		
UNMK 76 DP 592929	DISK 65 DP 592929	ob161	58°41'00"	C		4.43 C		Class A
UNMK 115 DP 592929	DISK 69 DP 592929	ob208	96°15'00"	C		16.03 C		Class A
PEG (32) DP 56375	UNMK 84 DP 592929	ob99	148°41'15"	A DP 56375	0°00'00"	1.00 C		Class A
UNMK 111 DP 592929	UNMK 109 DP 592929	ob202	116°56'00"	C		0.97 C		Class A
UNMK 215 DP 592929	UNMK 186 DP 592929	ob321	58°41'00"	C		6.66 C		Class A
UNMK 186 DP 592929	UNMK 172 DP 592929	ob291	328°41'00"	C		0.13 C		Class A
UNMK 142 DP 592929	UNMK 205 DP 592929	ob315	328°41'00"	C		5.97 C		Class A
UNMK 72 DP 592929	UNMK 171 DP 592929	ob156	58°41'15"	C		0.13 C		Class A
UNMK 179 DP 592929	UNMK 171 DP 592929	ob286	148°41'00"	C		0.13 C		Class A
UNMK 171 DP 592929	UNMK 183 DP 592929	ob320	58°41'15"	C		4.55 C		Class A
UNMK 181 DP 592929	UNMK 215 DP 592929	ob290	58°41'00"	C		4.86 C		Class A
UNMK 72 DP 592929	UNMK 215 DP 592929	ob155	148°41'00"	C		0.13 C		Class A
UNMK 203 DP 592929	UNMK 210 DP 592929	ob312	148°41'00"	C		0.25 C		Class A
UNMK 210 DP 592929	UNMK 211 DP 592929	ob322	58°41'00"	C		12.70 C		Class A
UNMK 211 DP 592929	UNMK 204 DP 592929	ob323	328°41'00"	C		0.25 C		Class A
UNMK 216 DP 592929	UNMK 172 DP 592929	ob324	148°41'00"	C		0.13 C		Class A
UNMK 187 DP 592929	UNMK 216 DP 592929	ob292	58°41'00"	C		1.98 C		Class A

Mark and Vector

Survey Number DP 592929

Meridional Circuit Mount Eden 2000

From	To	Code	Bearing	Adpt Surv	Bearing Correction	Distance	Adpt Surv	Class
UNMK 183 DP 592929	UNMK 172 DP 592929	ob325	58°41'15"	C		1.98 C		Class A
UNMK 187 DP 592929	UNMK 183 DP 592929	ob293	148°41'00"	C		0.13 C		Class A
AP 11 DP 592929	DISK 28 DP 592929	ob39	303°54'00"	M		12.20 M		
AP 12 DP 592929	DISK 66 DP 592929	ob53	313°06'00"	M		12.01 M		
AP 12 DP 592929	DISK 59 DP 592929	ob54	344°50'00"	M		8.02 M		
AP 5 DP 592929	PEG 25 DP 592929	ob9	176°42'00"	M		23.40 M		
UNMK 113 DP 592929	DISK 43 DP 592929	ob326	148°41'15"	A	DP 56375	0°00'00"	0.42 C	Class A
UNMK 138 DP 592929	DISK 56 DP 592929	ob327	148°41'15"	C		0.42 C		Class A
UNMK 220 DP 592929	UNMK 205 DP 592929	ob328	58°41'15"	C		0.37 C		Class A
UNMK 221 DP 592929	DISK 107 DP 592929	ob329	58°41'15"	C		2.81 C		Class A
UNMK 83 DP 592929	UNMK 162 DP 592929	ob330	148°41'15"	C		5.09 C		Class A
UNMK 84 DP 592929	UNMK 42 DP 592929	ob332	148°41'15"	A	DP 56375	0°00'00"	18.48 C	Class A
UNMK 109 DP 592929	UNMK 83 DP 592929	ob319	27°53'00"	C		3.93 C		Class A
UNMK 83 DP 592929	UNMK 110 DP 592929	ob331	26°56'40"	C		6.40 C		Class A
UNMK 110 DP 592929	UNMK 84 DP 592929	ob333	58°41'30"	C		2.71 C		Class A

Mark Name	Mark Condition	Description
1880 SO 48445		N/A
1885 SO 48445		N/A
AP 1 DP 592929		Nail flush in Conc
AP 11 DP 592929		Nail flush in Conc
AP 12 DP 592929		Nail flush in Conc
AP 13 DP 592929		Nail flush in Conc
AP 15 DP 592929		Nail flush in Conc
AP 2 DP 592929		Nail flush in Conc
AP 3 DP 592929		Nail flush in Conc
AP 4 DP 592929		Nail flush in Conc
AP 5 DP 592929		Nail flush in Conc
AP 6 DP 592929		Nail flush in Conc

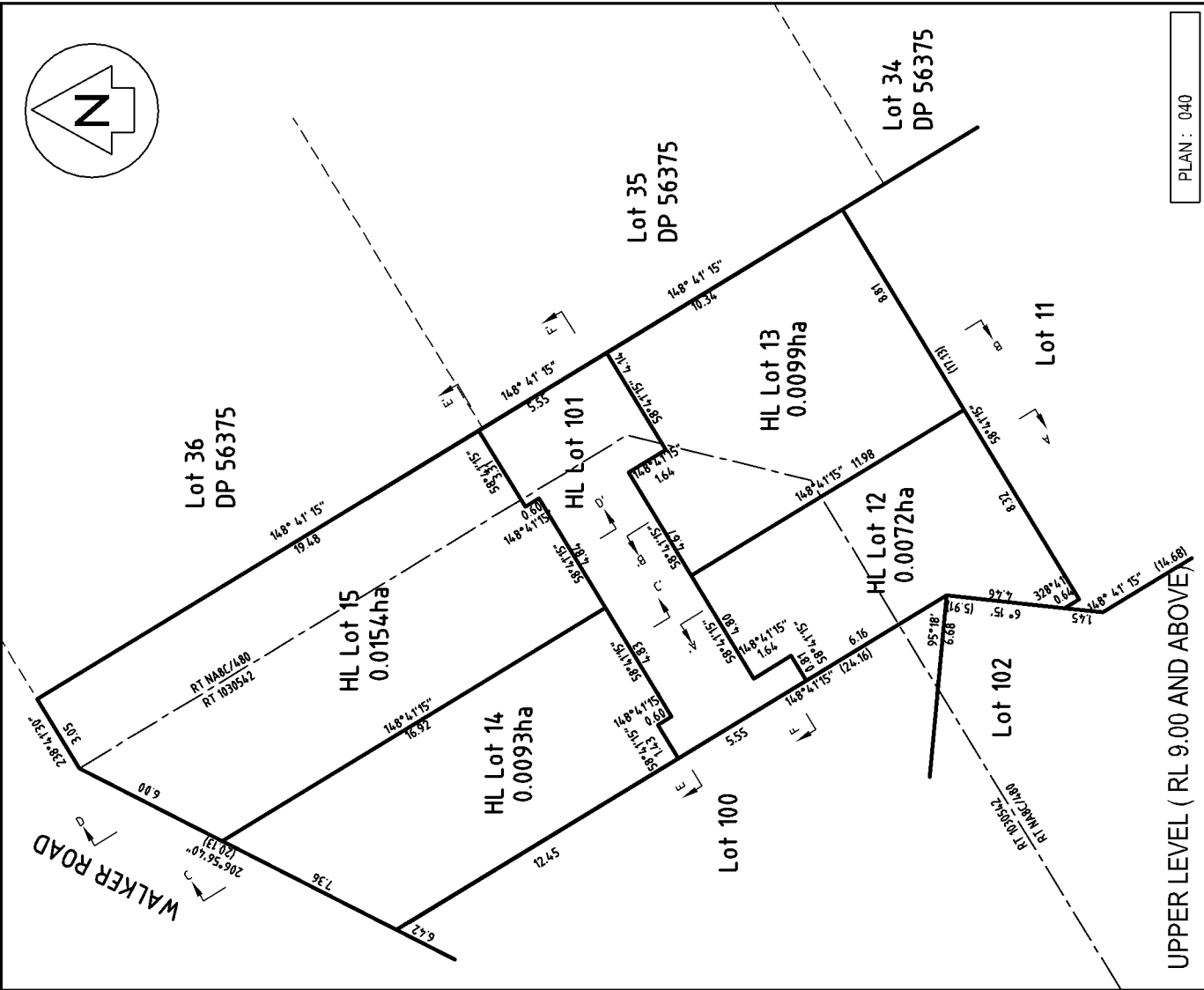
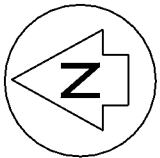


Mark and Vector

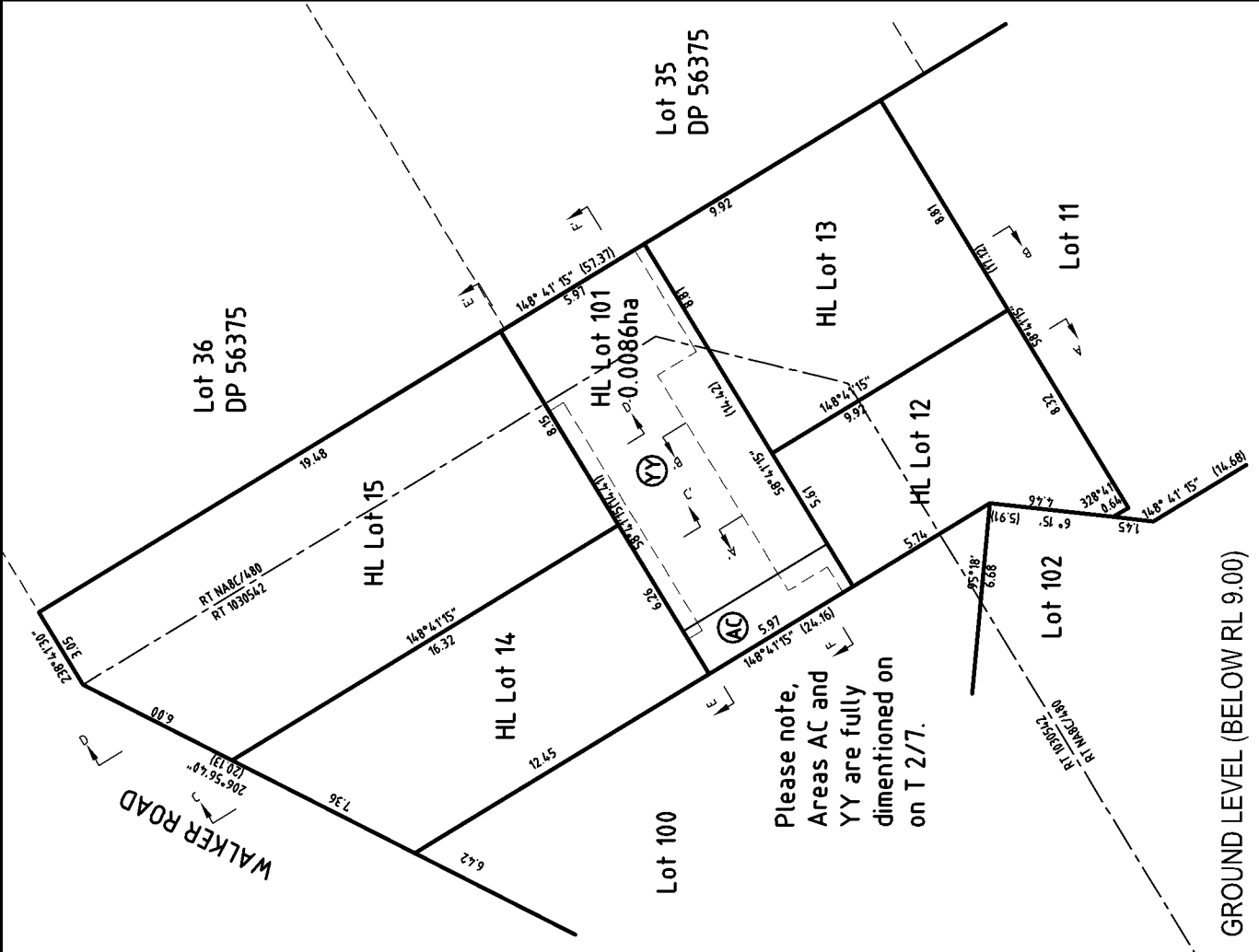
Survey Number DP 592929
Meridional Circuit Mount Eden 2000

Mark Name	Mark Condition	Description
IS 7 DP 592929		Iron spike 0.30 deep in grass
IS 8 DP 592929		Iron spike 0.30 deep in grass
IT 14 DP 592929		Iron spike 0.30 deep in grass
IT XVIA DP 56375		IRON TUBE BURIED IN GRASS BERM
SS 1881 SO 48445		N/A

***** End of Report *****



UPPER LEVEL (RL 9.00 AND ABOVE)



GROUND LEVEL (BELOW RL 9.00)

PLAN : 040

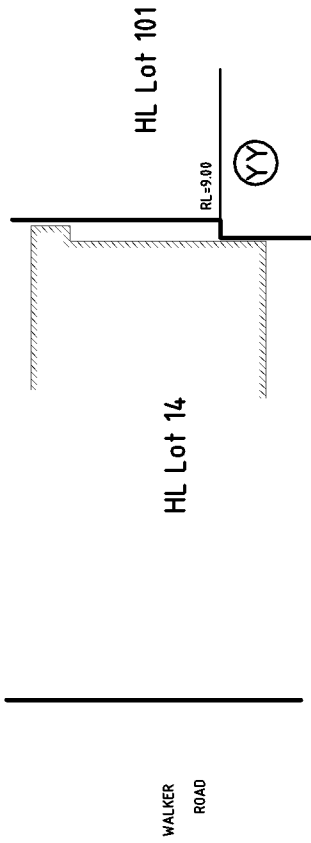
Sheet 1 OF 3
DP 592929

Scale at A4 : 1:250 (A4)
Surveyor : BRIAN COWLEY
Maven Ref : 243026 WALKER

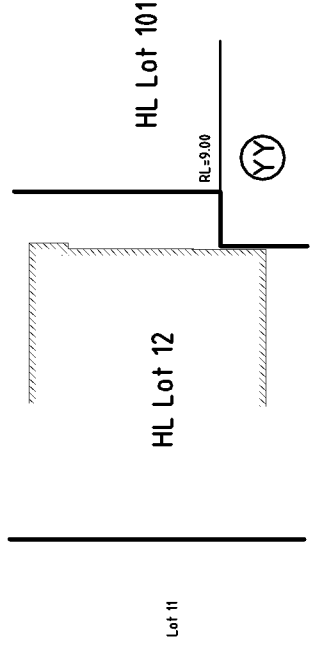
Lots 1 - 11, 16 - 21, 100, 102, Height Limited Lots 12 - 15
& 101 Being a Subdivision of Lots 37 & 38 DP 56375

Land District : North Auckland
Territorial Authority : Auckland Council
TA Reference : SUB60377814-A

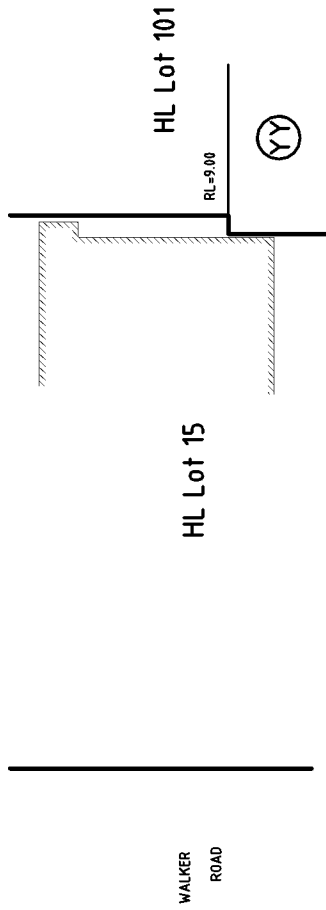




CROSS SECTION C - C'

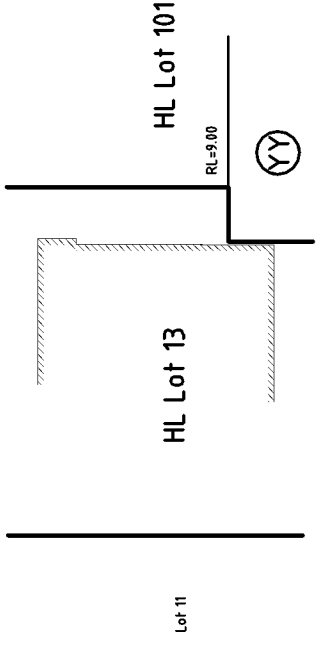


CROSS SECTION A - A'



CROSS SECTION D - D'

ⓎⓎ is typical of ⓐⓐ



CROSS SECTION B - B'

DATUM : AUCKLAND VERTICAL DATUM 1946
 ORIGIN : SS 1881 SO 48445 (CKL3)
 SOURCE : LINZ GEODETIC DATABASE : RL = 18.375



Land District : North Auckland
 Territorial Authority : Auckland Council
 TA Reference : SUB60377814-A

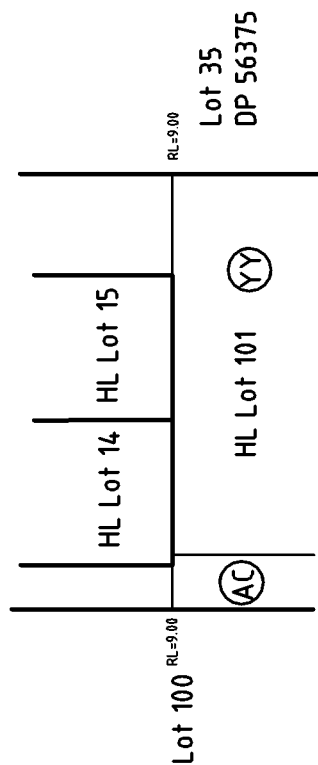
Lots 1 - 11, 16 - 21, 100, 102, Height Limited Lots 12 - 15
 & 101 Being a Subdivision of Lots 37 & 38 DP 56375

PLAN : 041

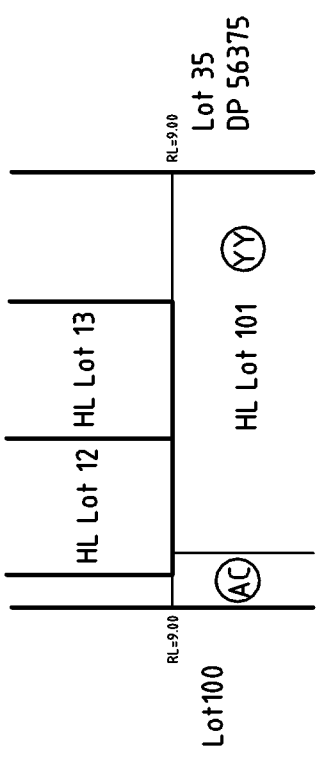
Sheet 2 OF 3

DP 592929

Scale at A4 : NTS
 Surveyor : BRIAN COWLEY
 Mavern Ref : 243026 WALKER



CROSS SECTION E - E'



CROSS SECTION F - F'



Land District : North Auckland
 Territorial Authority : Auckland Council
 TA Reference : SUB60377814-A

Lots 1 - 11, 16 - 21, 100, 102, Height Limited Lots 12 - 15
 & 101 Being a Subdivision of Lots 37 & 38 DP 56375

Scale at A4 : NTS
 Surveyor : BRIAN COWLEY
 Mavern Ref : 243026 WALKER

PLAN : 042

Sheet 3 OF 3

DP 592929

Easement Schedule - DP 592929
 [243026]

MEMORANDUM OF EASEMENTS			
Purpose	Shown	Burdened Land (Servient Tenement)	Benefitted Land (Dominant Tenement)
Party Wall	D	Lot 1 Hereon	Lot 2 Hereon
	E	Lot 2 Hereon	Lot 1 Hereon
	F		Lot 3 Hereon
	G	Lot 3 Hereon	Lot 2 Hereon
	H		Lot 4 Hereon
	I	Lot 4 Hereon	Lot 3 Hereon
	J		Lot 5 Hereon
	K	Lot 5 Hereon	Lot 4 Hereon
	L		Lot 6 Hereon
	M	Lot 6 Hereon	Lot 5 Hereon
	N		Lot 7 Hereon
	O	Lot 7 Hereon	Lot 6 Hereon
	P	Lot 8 Hereon	Lot 9 Hereon
	Q	Lot 9 Hereon	Lot 8 Hereon
	R		Lot 10 Hereon
	S	Lot 10 Hereon	Lot 9 Hereon
T	Lot 11 Hereon		

Easement Schedule - DP 592929
 [243026]

MEMORANDUM OF EASEMENTS (continued)			
Purpose	Shown	Burdened Land (Servient Tenement)	Benefitted Land (Dominant Tenement)
Party Wall	U	Lot 11 Hereon	Lot 10 Hereon
	AK		Height Limited Lot 12 Hereon
	V		Height Limited Lot 13 Hereon
	W	Height Limited Lot 12 Hereon	Lot 11 Hereon
	X	Height Limited Lot 13 Hereon	
	Y	Height Limited Lot 12 Hereon	Height Limited Lot 13 Hereon
	Z	Height Limited Lot 13 Hereon	Height Limited Lot 12 Hereon
	WY	Height Limited Lot 12 Hereon	Lot 11 & Height Limited 13 Hereon
	XZ	Height Limited Lot 13 Hereon	Lots 11 & Height Limited 12 Hereon
	AA	Height Limited Lot 14 Hereon	Height Limited Lot 15 Hereon
	AB	Height Limited Lot 15 Hereon	Height Limited Lot 14 Hereon
	AM	Height Limited Lot 13 Hereon	Lot 11 Hereon
	Right of Way	AC	Height Limited Lot 101 Hereon
AF XX		Lot 100 Hereon	Lots 16 -21 Hereon
AE ZZ		Lot 102 Hereon	
Pedestrian Access	A	Lot 11 Hereon	Lots 8 -10 Hereon
	B	Lot 10 Hereon	Lot 8 - 9 Hereon
	C	Lot 9 Hereon	Lot 8 Hereon
	AD	Lot 10 Hereon	Lot 8 - 9 Hereon

Easement Schedule - DP 592929
 [243026]

MEMORANDUM OF EASEMENTS (continued)			
Purpose	Shown	Burdened Land (Servient Tenement)	Benefitted Land (Dominant Tenement)
Right to Overhang	AL	Height Limited Lot 13 Hereon	Lot 11 Hereon
	AM		
	AN		
Right of Support	AE	Lot 102 Hereon	Lots 2 - 7 Hereon
	AF	Lot 100 Hereon	Lots 1 & 2 Hereon
Right to convey Telecommunications, Right to convey Electricity, Right to convey Gas, Right to Water Supply	XX	Lot 100 Hereon	Lots 1 - 11 & HL Lots 12 - 15 Hereon
	AC	Height Limited Lot 101 Hereon	Height Limited Lots 12 - 15 Hereon
	YY	Height Limited Lot 101 Hereon	Height Limited Lots 12 - 15 Hereon
	ZZ	Lot 102 Hereon	Lot 2 - 11 Hereon
Letterbox	AG	Height Limited Lot 14 Hereon	Lot 1 - 11, HL Lots 13 & HL Lot 15 Hereon
Right to drain water	C	Lot 9 Hereon	Lot 8 Hereon
	AD	Lot 10 Hereon	Lot 8 & 9 Hereon
Lighting	AF, XX	Lot 100 Hereon	Lots 1- 11 & HL Lot 12 - 15 Hereon
	AC, YY	Height Limited Lot 101 Hereon	Height Limited Lots 12-15 Hereon
	AE, ZZ	Lot 102 Hereon	Lots 2-11 Hereon

Easement Schedule - DP 592929
[243026]

SCHEDULE OF EASEMENTS IN GROSS			
Purpose	Shown	Burdened Land (Servient Tenement)	GRANTEE
Right to convey Telecommunications	XX	Lot 100 Hereon	Chorus New Zealand Limited
	AC YY	Height Limited Lot 101 Hereon	
	ZZ	Lot 102 Hereon	
	AJ	Height Limited Lot 15 Hereon	
	AH AG	Height Limited Lot 14 Heron	

Easement Schedule - DP 592929

[243026]

Amalgamation Conditions:

That Lot 100 (legal access) is held as to fifteen undivided one-fifteenth shares by the owners of Lots 1 – 11 and Height Limited Lots 12 - 15 as tenants in common in the said shares and that individual Record of Titles be issued in accordance with.

That Height Limited Lot 101 (legal access) is held as to four undivided one-fourth shares by the owners of Height Limited Lots 12 – 15 as tenants in common in the said shares and that individual Record of Titles be issued in accordance with.

That Lot 102 (legal access) is held as to ten undivided one-tenth shares by the owners of Lots 2 – 11 as tenants in common in the said shares and that individual Record of Titles be issued in accordance with.

That Lots 6 & 20 be held in the same Record of Title.
That Lots 7 & 21 be held in the same Record of Title.
That Lots 8 & 19 be held in the same Record of Title.
That Lots 9 & 18 be held in the same Record of Title.
That Lots 10 & 17 be held in the same Record of Title.
That Lots 11 & 16 be held in the same Record of Title.

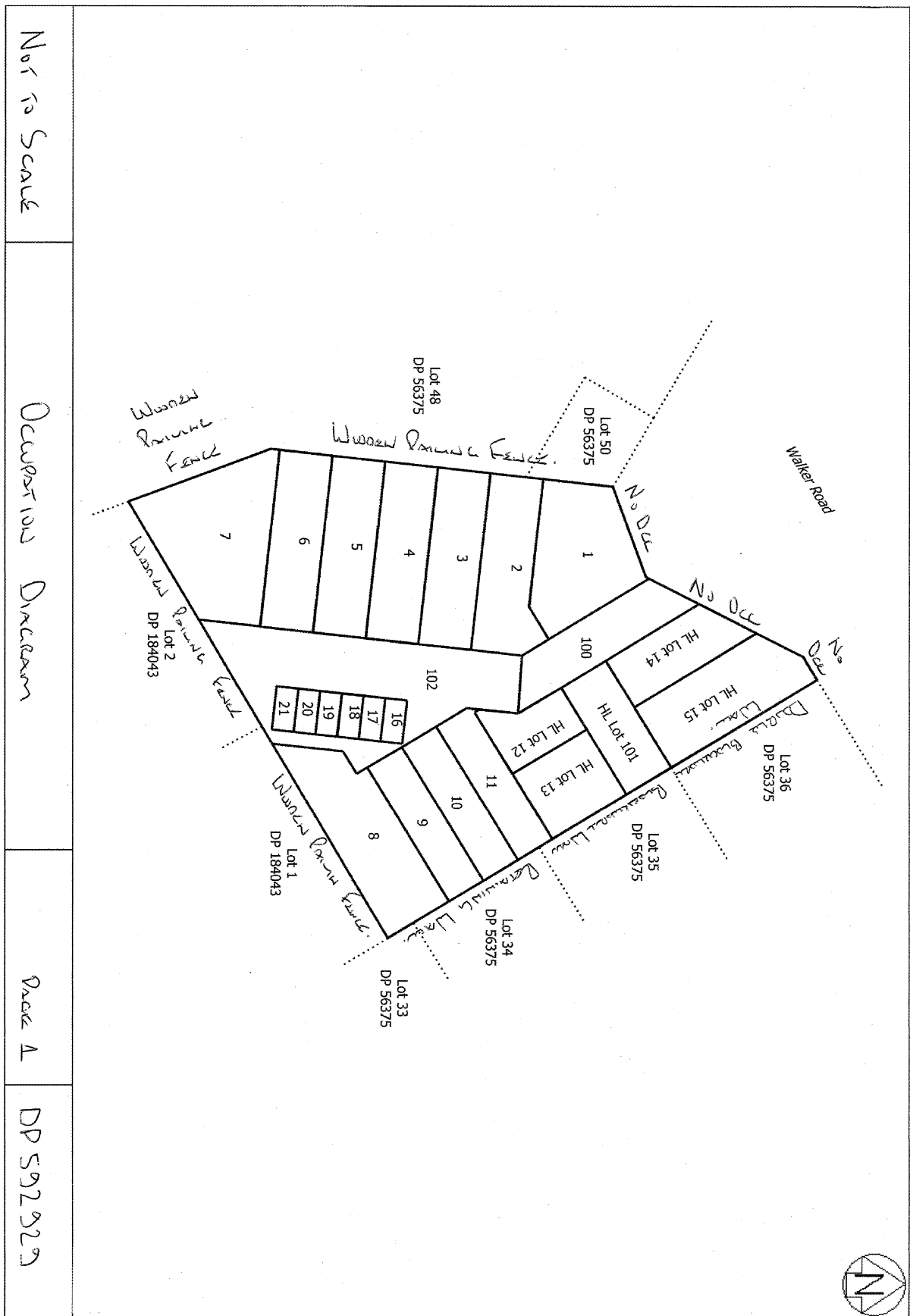
Datum: Auckland Vertical Datum 1946

Origin: SS 1881 SO 48445

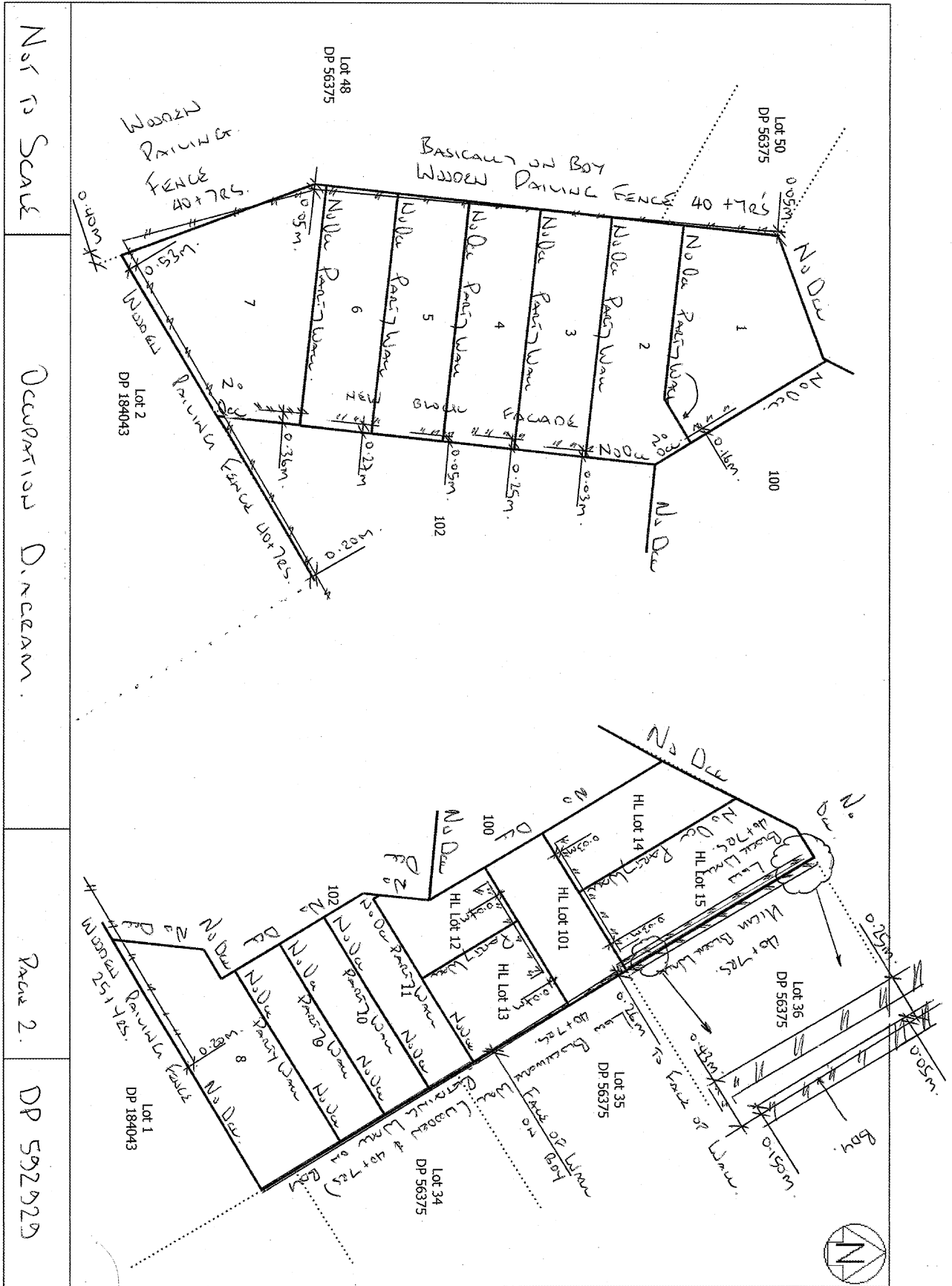
Source: LINZ GEODETIC DATA BASE RL = 18.375.

Height Limited Lots 12 - 15 & 101
are shown on Plan Graphic attached
for clarity.

Occupation Diagram

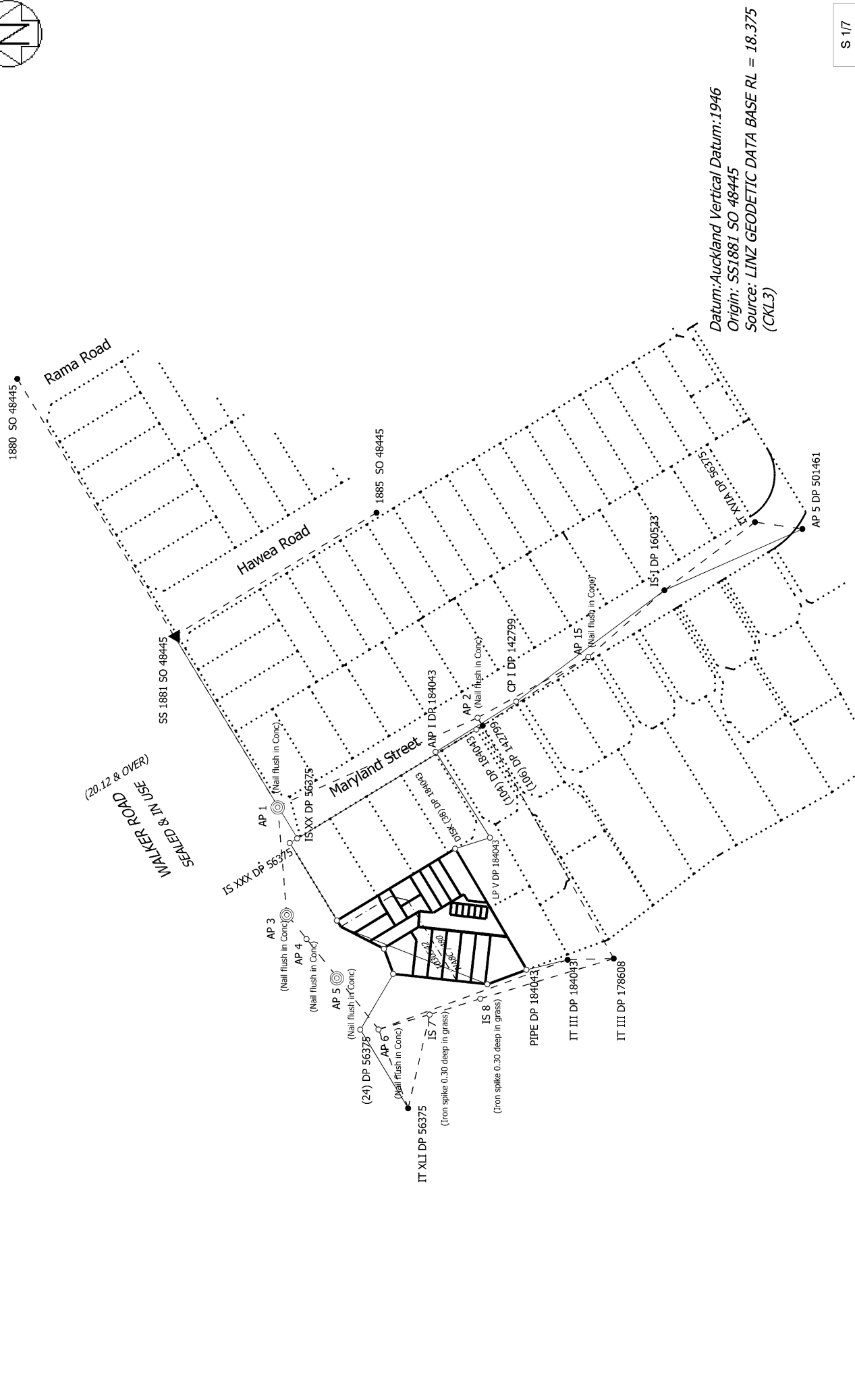


Occupation Diagram





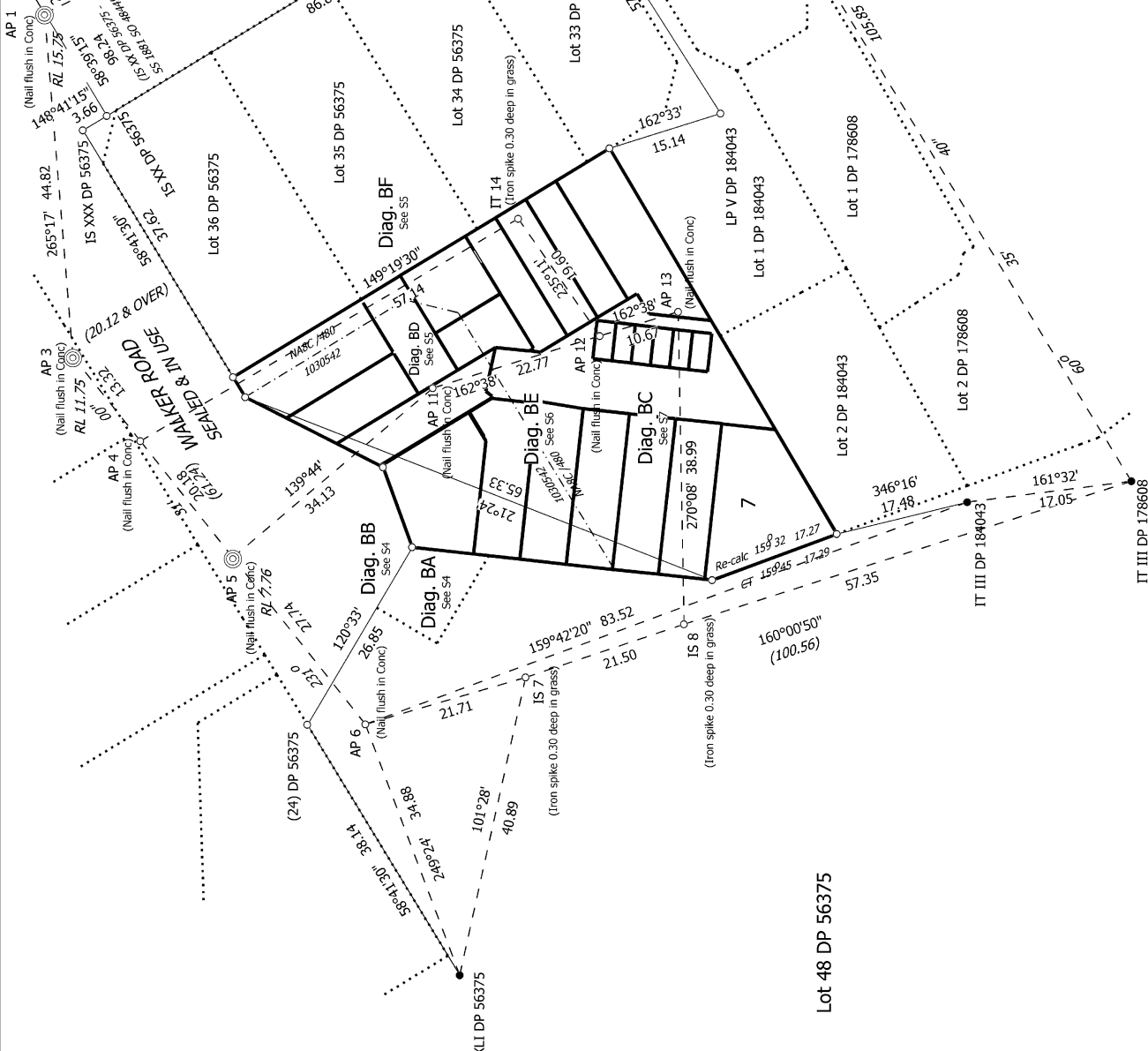
Diag. A



<p>Land District: North Auckland</p> <p>Digitally Generated Plan</p> <p>Generated on: 01/02/2024 10:57:am Page 29 of 42</p>	<p>Lots 1 - 11, 16 - 21, 100, 102, Height Limited Lots 12 - 15 & 101 Being a Subdivision of Lots 37 & 38 DP 56375</p>	<p>Surveyor: Brian Patrick Cowley Firm: Maven Associates Limited Date of Survey: 26/07/2023</p>	<p>Record of Survey DP 592929</p> <p>Deposited on: 20/12/2023</p>
--	--	---	---



Diag. B



Datum: Auckland Vertical Datum: 1946
 Origin: SS1881 SO 48445
 Source: LINZ GEODETIC DATA BASE RL = 18.375 (CKL3)

S 217

<p>Land District: North Auckland</p> <p>Digitally Generated Plan</p> <p><small>Generated on: 01/02/2024 10:57:am Page 30 of 42</small></p>	<p>Lots 1 - 11, 16 - 21, 100, 102, Height Limited Lots 12 - 15 & 101 Being a Subdivision of Lots 37 & 38 DP 56375</p>	<p>Surveyor: Brian Patrick Cowley Firm: Mavens Associates Limited Date of Survey: 26/07/2023</p>	<p>Record of Survey DP 592929 Deposited on: 20/12/2023</p>
---	--	--	--



Diag. C

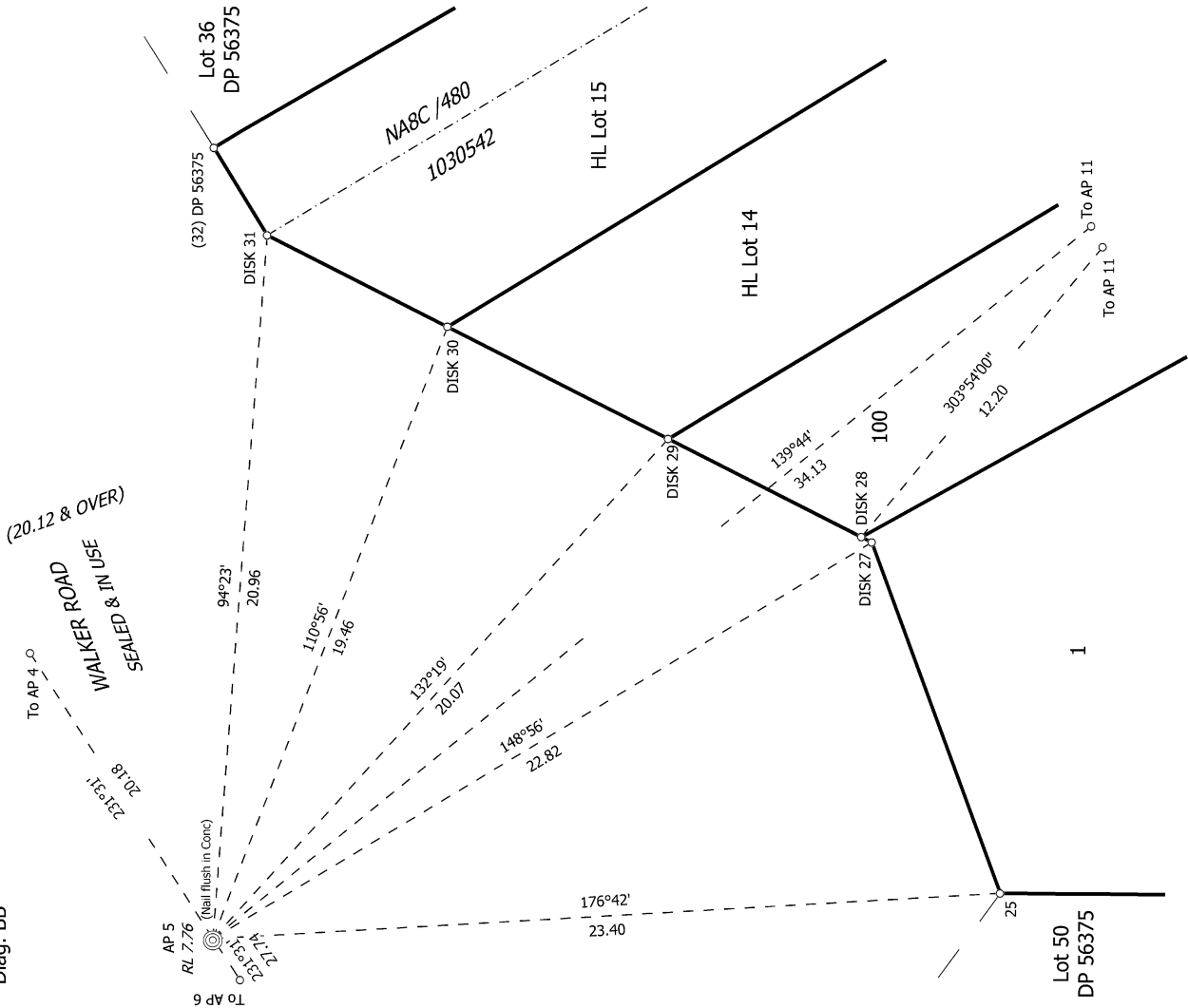


Datum: Auckland Vertical Datum: 1946
 Origin: SSI 1881 SO 48445
 Source: LINZ GEODETIC DATA BASE RL = 18.375
 (CKL3)

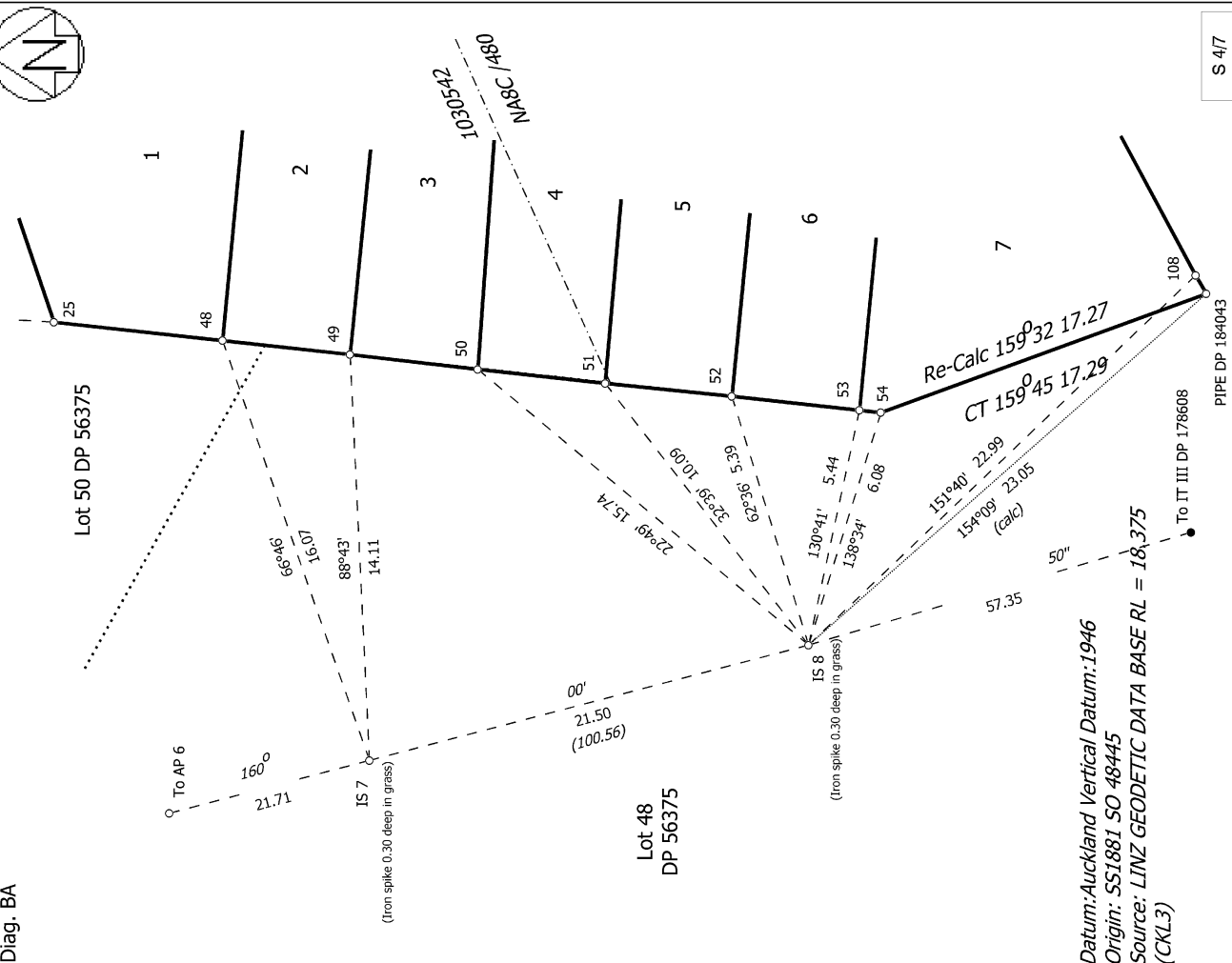
S 3/7

<p>Land District: North Auckland</p> <p>Digitally Generated Plan</p> <p>Generated on: 01/02/2024 10:57:am Page 31 of 42</p>	<p>Lots 1 - 11, 16 - 21, 100, 102, Height Limited Lots 12 - 15 & 101 Being a Subdivision of Lots 37 & 38 DP 56375</p>	<p>Surveyor: Brian Patrick Cowley Firm: Maven Associates Limited Date of Survey: 26/07/2023</p>	<p>Record of Survey DP 592929</p> <p>Deposited on: 20/12/2023</p>
--	--	---	--

Diag. BB

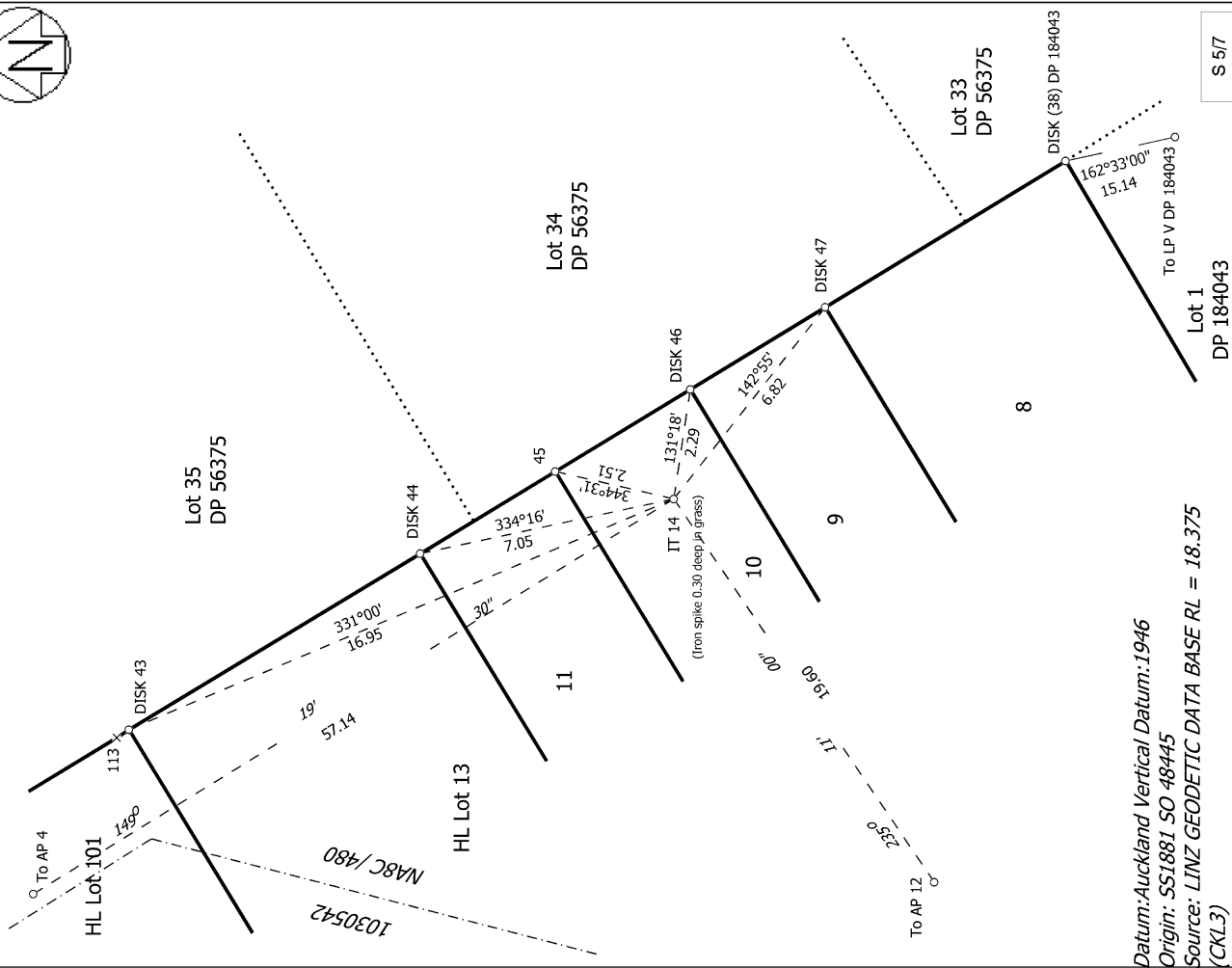


Diag. BA





Diag. BF



Datum: Auckland Vertical Datum: 1946
 Origin: SS1881 SO 48445
 Source: LINZ GEODETIC DATA BASE RL = 18.375 (CGL3)

S 5/7

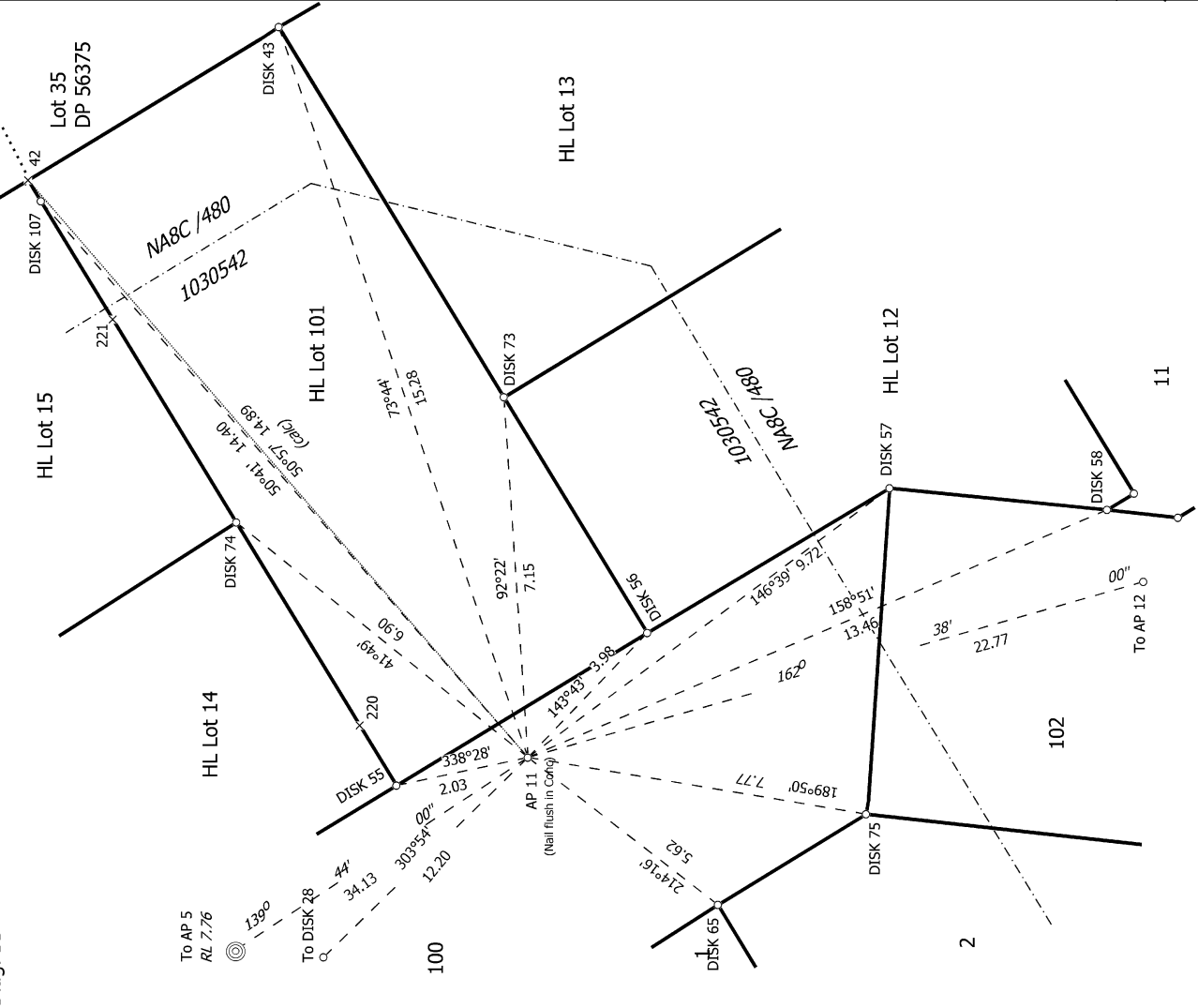
Record of Survey
 DP 592929
 Deposited on: 20/12/2023

Surveyor: Brian Patrick Cowley
 Firm: Mavens Associates Limited
 Date of Survey: 26/07/2023

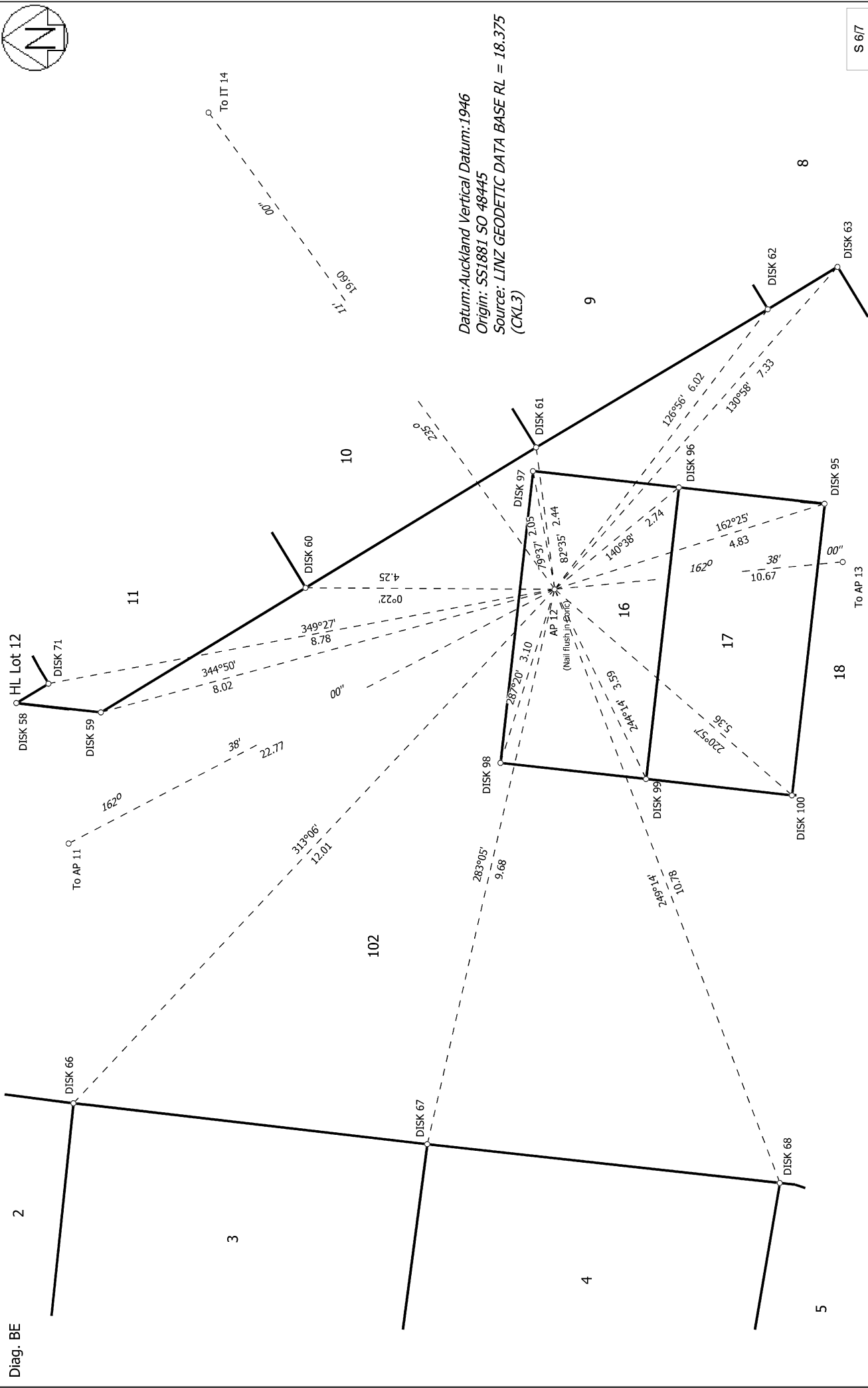
Lots 1 - 11, 16 - 21, 100, 102, Height Limited Lots 12 - 15 & 101 Being a
 Subdivision of Lots 37 & 38 DP 56375

Land District: North Auckland
 Digitally Generated Plan
 Generated on: 01/02/2024 10:57:am | Page 33 of 42

Diag. BD



Land District: North Auckland
 Digitally Generated Plan
 Generated on: 01/02/2024 10:57:am | Page 33 of 42

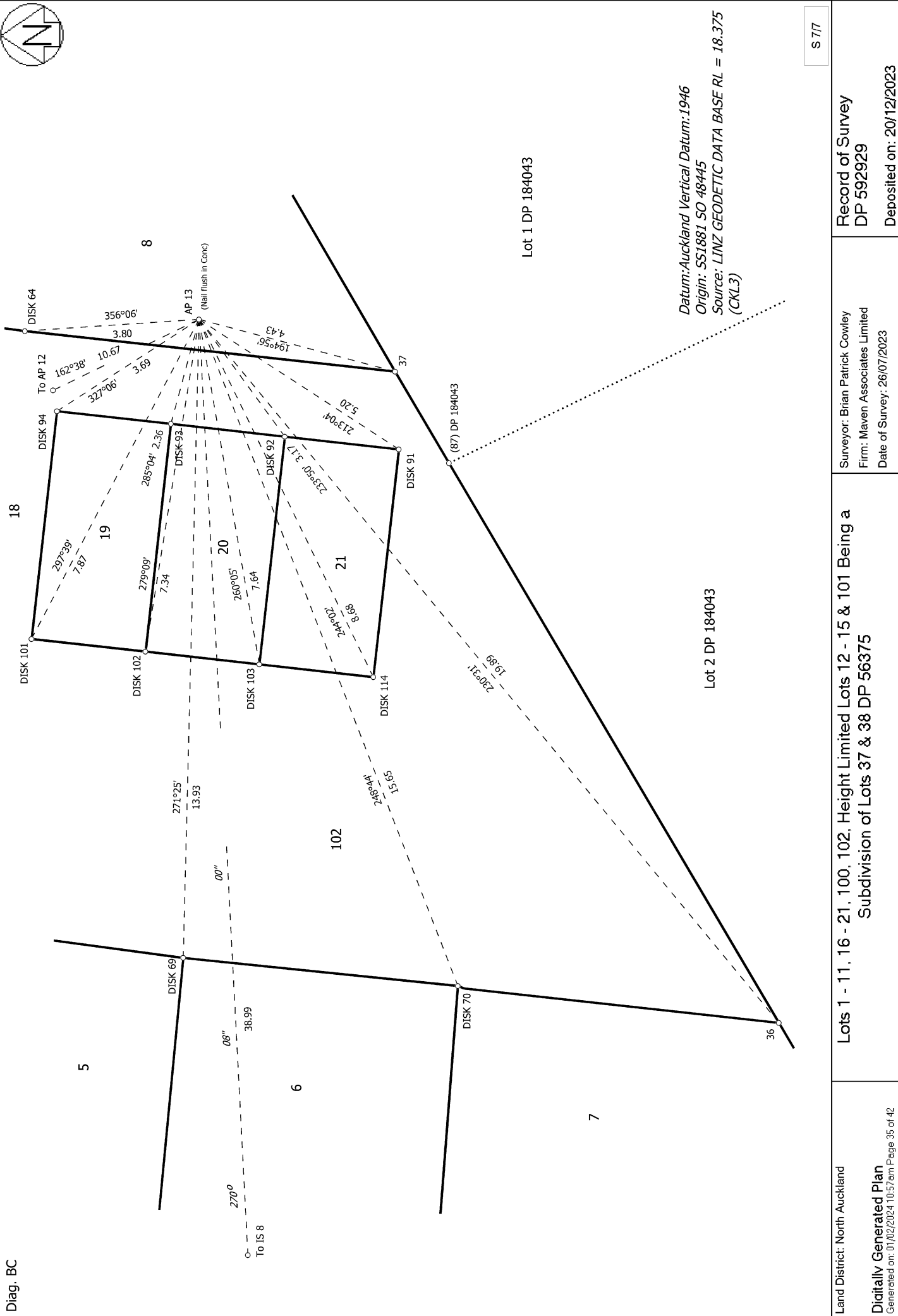


Datum: Auckland Vertical Datum: 1946
 Origin: SS1881 SO 48445
 Source: LINZ GEODETIC DATA BASE RL = 18.375
 (CKL3)

S 617

Diag. BE

<p>Land District: North Auckland Digitally Generated Plan <small>Generated on: 01/02/2024 10:57:am Page 34 of 42</small></p>	<p>Lots 1 - 11, 16 - 21, 100, 102, Height Limited Lots 12 - 15 & 101 Being a Subdivision of Lots 37 & 38 DP 56375</p>	<p>Surveyor: Brian Patrick Cowley Firm: Maven Associates Limited Date of Survey: 26/07/2023</p>	<p>Record of Survey DP 592929 Deposited on: 20/12/2023</p>
---	--	---	--



Diag. BC

Datum: Auckland Vertical Datum: 1946
 Origin: SS1881 SO 48445
 Source: LINZ GEODETIC DATA BASE RL = 18.375
 (CKL3)

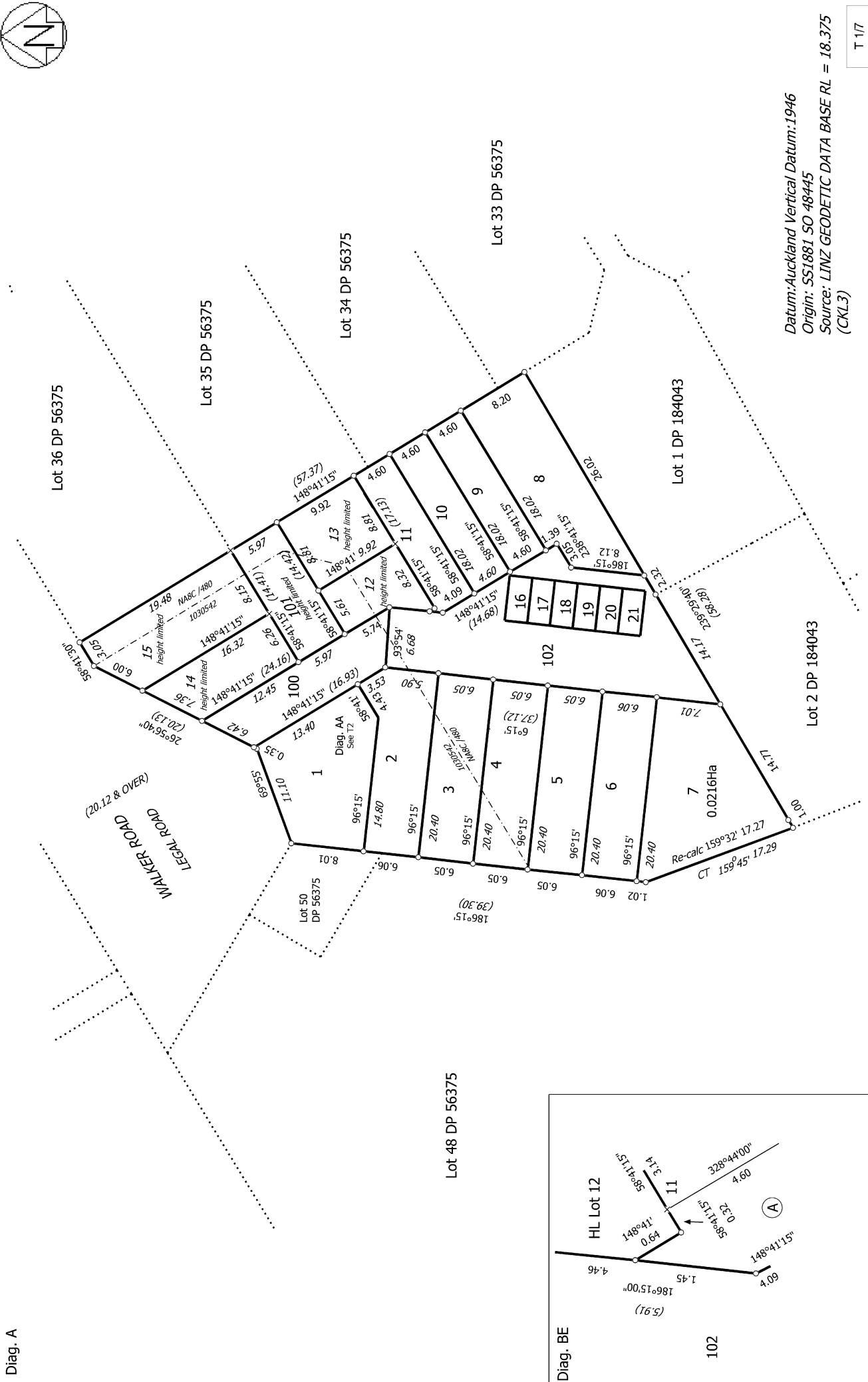
S 7/7

Lots 1 - 11, 16 - 21, 100, 102, Height Limited Lots 12 - 15 & 101 Being a Subdivision of Lots 37 & 38 DP 56375

Surveyor: Brian Patrick Cowley
 Firm: Maven Associates Limited
 Date of Survey: 26/07/2023

Record of Survey
 DP 592929
 Deposited on: 20/12/2023

Diag. A



Datum: Auckland Vertical Datum: 1946
 Origin: SS1881 SO 48445
 Source: LINZ GEODETIC DATA BASE RL = 18.375
 (CKL3)

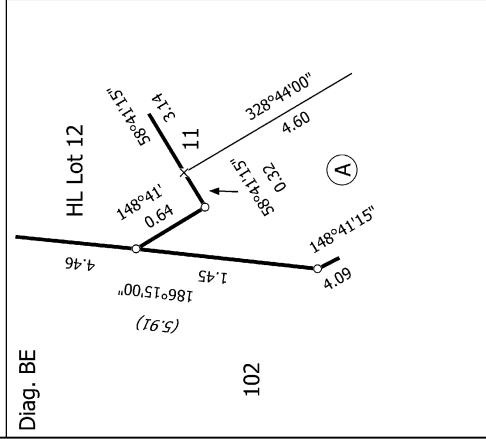
T 1/7

Land District: North Auckland
 Digitally Generated Plan
 Generated on: 01/02/2024 10:57:am | Page 36 of 42

Lots 1 - 11, 16 - 21, 100, 102, Height Limited Lots 12 - 15 & 101 Being a Subdivision of Lots 37 & 38 DP 56375

Surveyor: Brian Patrick Cowley
 Firm: Maven Associates Limited
 Date of Survey: 26/07/2023

Record of Survey DP 592929
 Deposited on: 20/12/2023

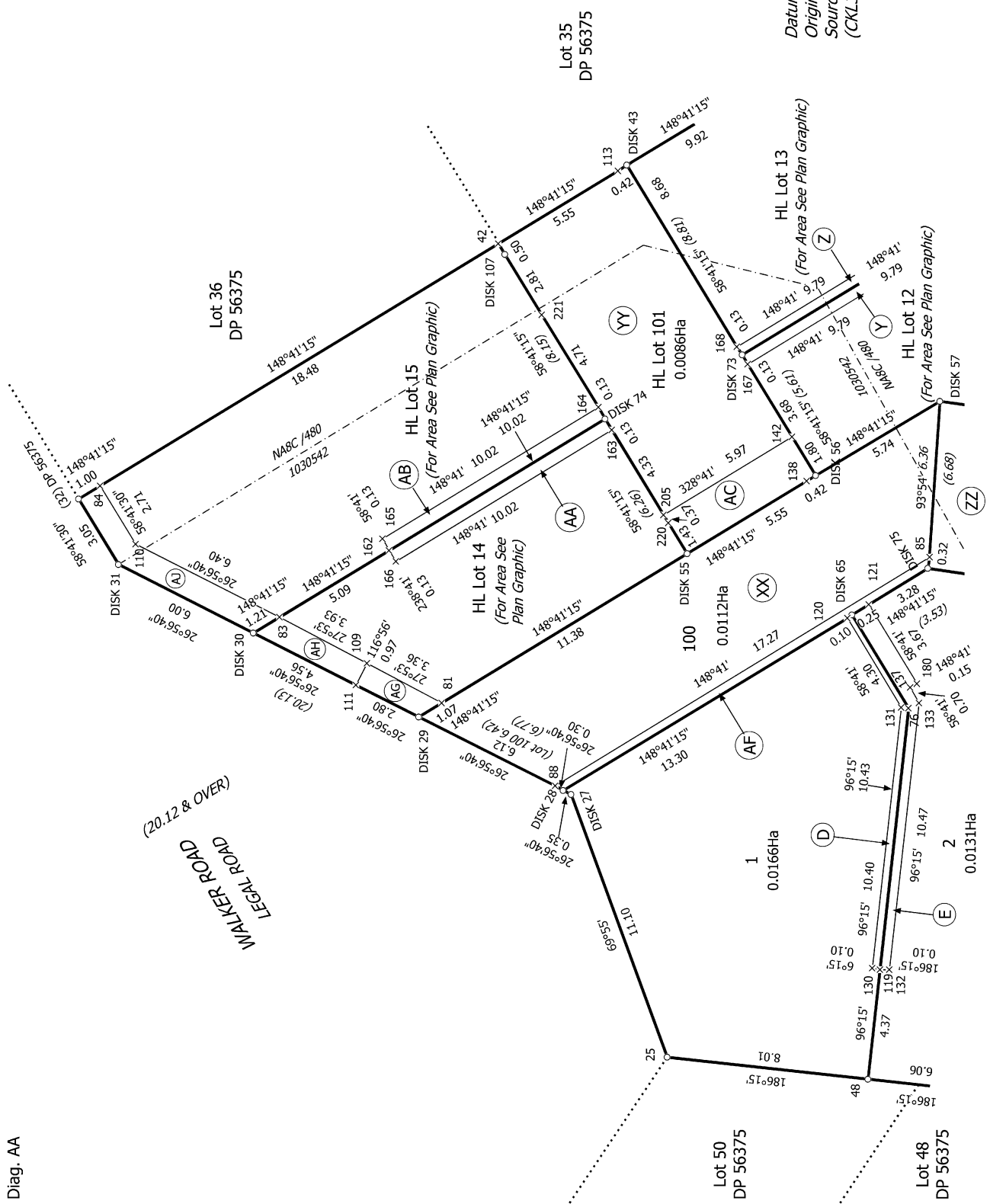


Diag. BE



Diag. AA

WALKER ROAD
LEGAL ROAD
(20.12 & OVER)



Datum: Auckland Vertical Datum: 1946
 Origin: SS1881 SO 48445
 Source: LINZ GEODETIC DATA BASE RL = 18.375
 (CKL3)

T 217

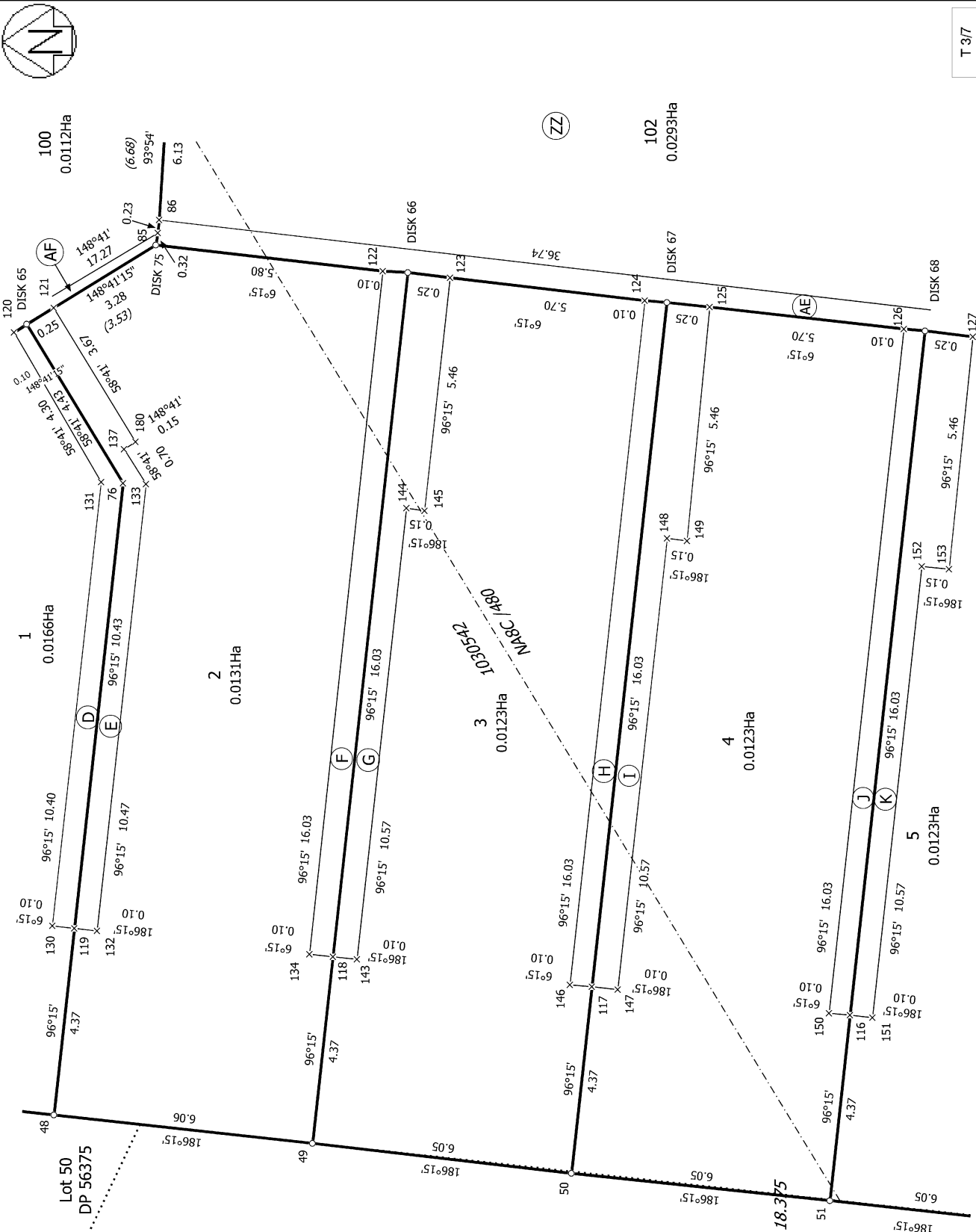
Land District: North Auckland
 Digitally Generated Plan
 Generated on: 01/02/2024 10:57:am Page 37 of 42

Lots 1 - 11, 16 - 21, 100, 102, Height Limited Lots 12 - 15 & 101 Being a
 Subdivision of Lots 37 & 38 DP 56375

Surveyor: Brian Patrick Cowley
 Firm: Maven Associates Limited
 Date of Survey: 26/07/2023

Record of Survey
 DP 592929
 Deposited on: 20/12/2023

Diag. BA



Lot 48
DP 56375

Datum: Auckland Vertical Datum: 1946
Origin: SSI881 SO 48445
Source: LINZ GEODETIC DATA BASE RL = 18.375
(CKL3)

T 3/7

Land District: North Auckland
Digitally Generated Plan
Generated on: 01/02/2024 10:57am | Page 38 of 42

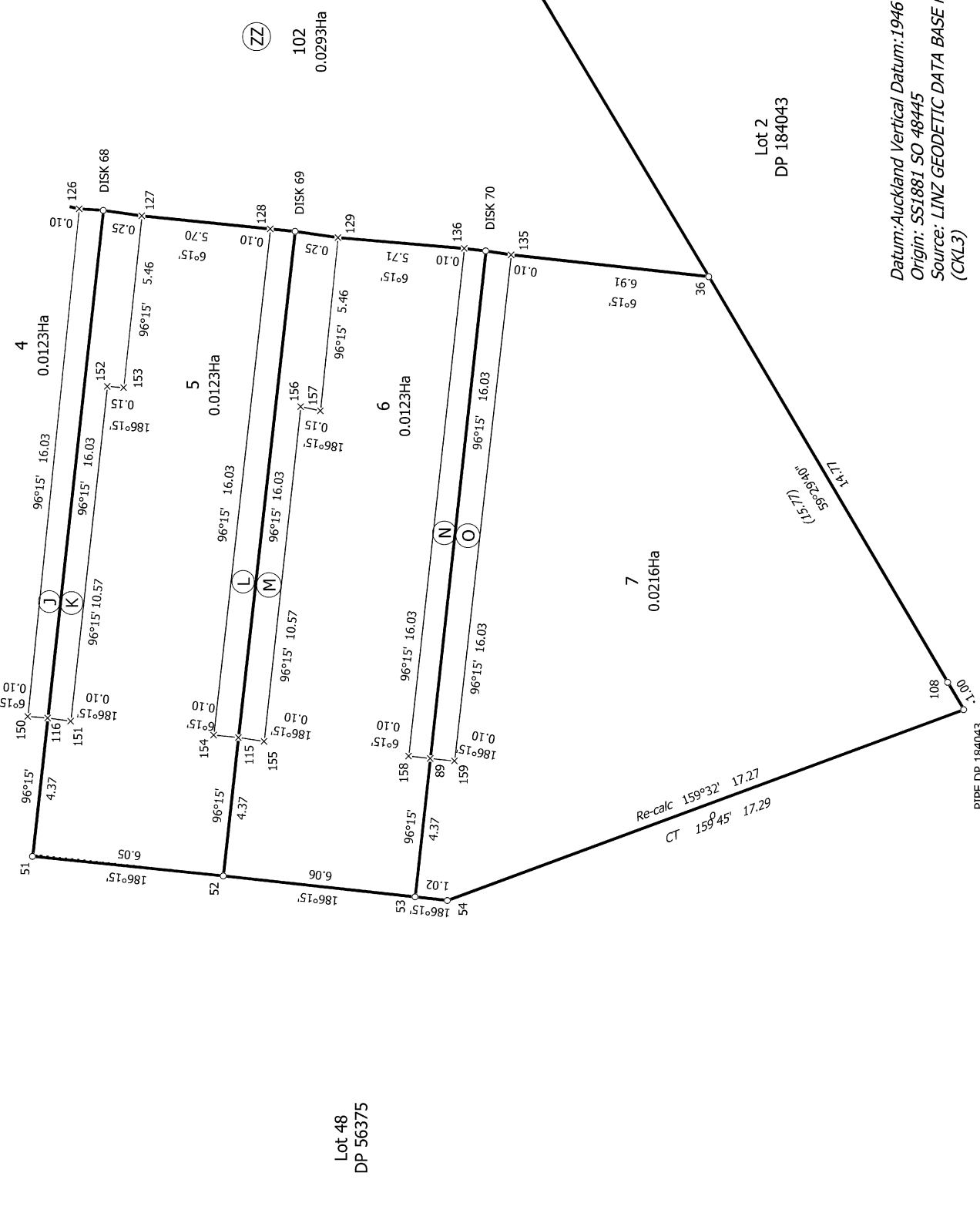
Lots 1 - 11, 16 - 21, 100, 102, Height Limited Lots 12 - 15 & 101 Being a
Subdivision of Lots 37 & 38 DP 56375

Surveyor: Brian Patrick Cowley
Firm: Mavens Associates Limited
Date of Survey: 26/07/2023

Record of Survey
DP 592929
Deposited on: 20/12/2023



Diag. BB



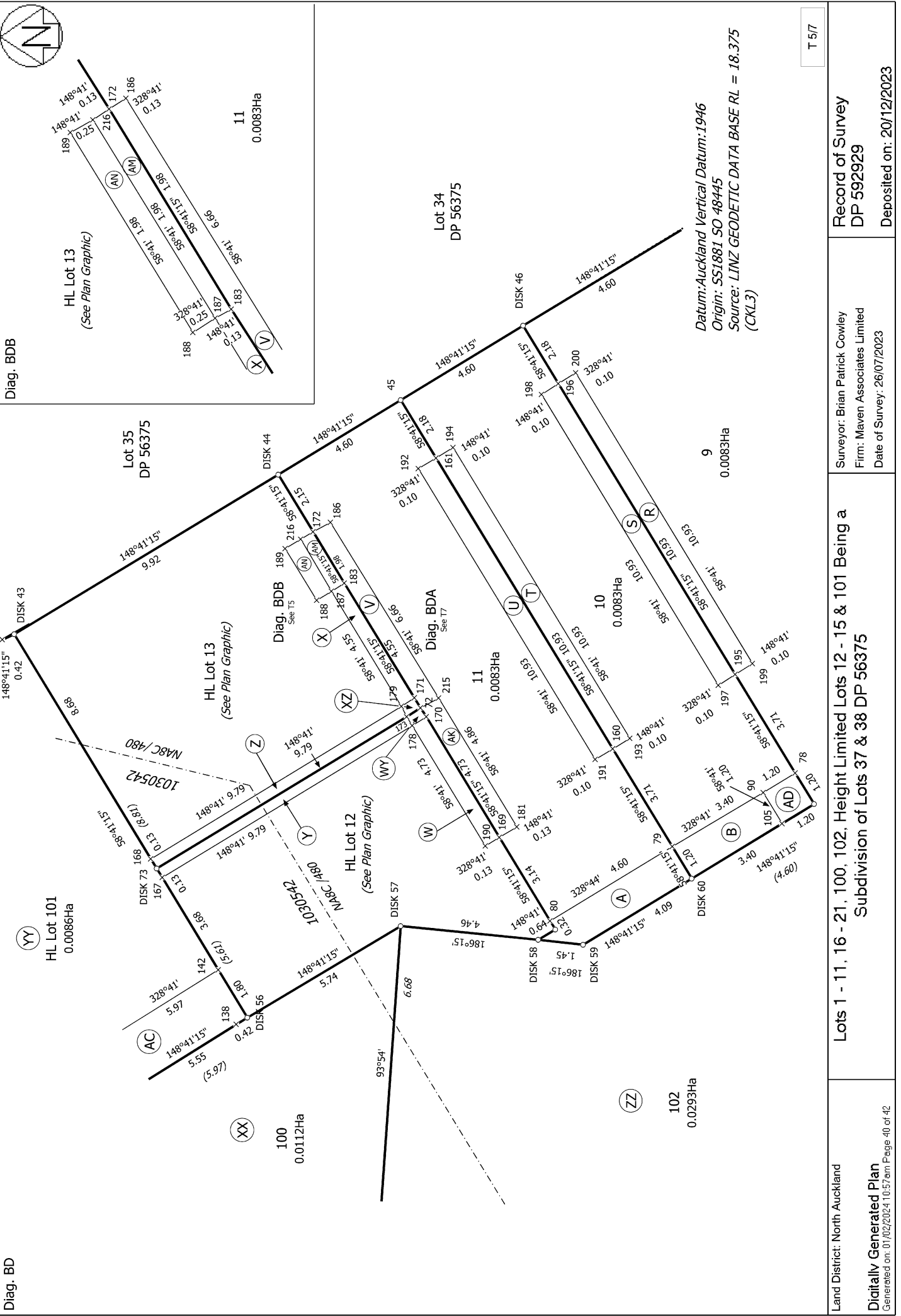
Lot 48
DP 56375

Lot 2
DP 184043

Datum: Auckland Vertical Datum: 1946
Origin: SSI881 SO 48445
Source: LINZ GEODETIC DATA BASE RL = 18.375
(CKL3)

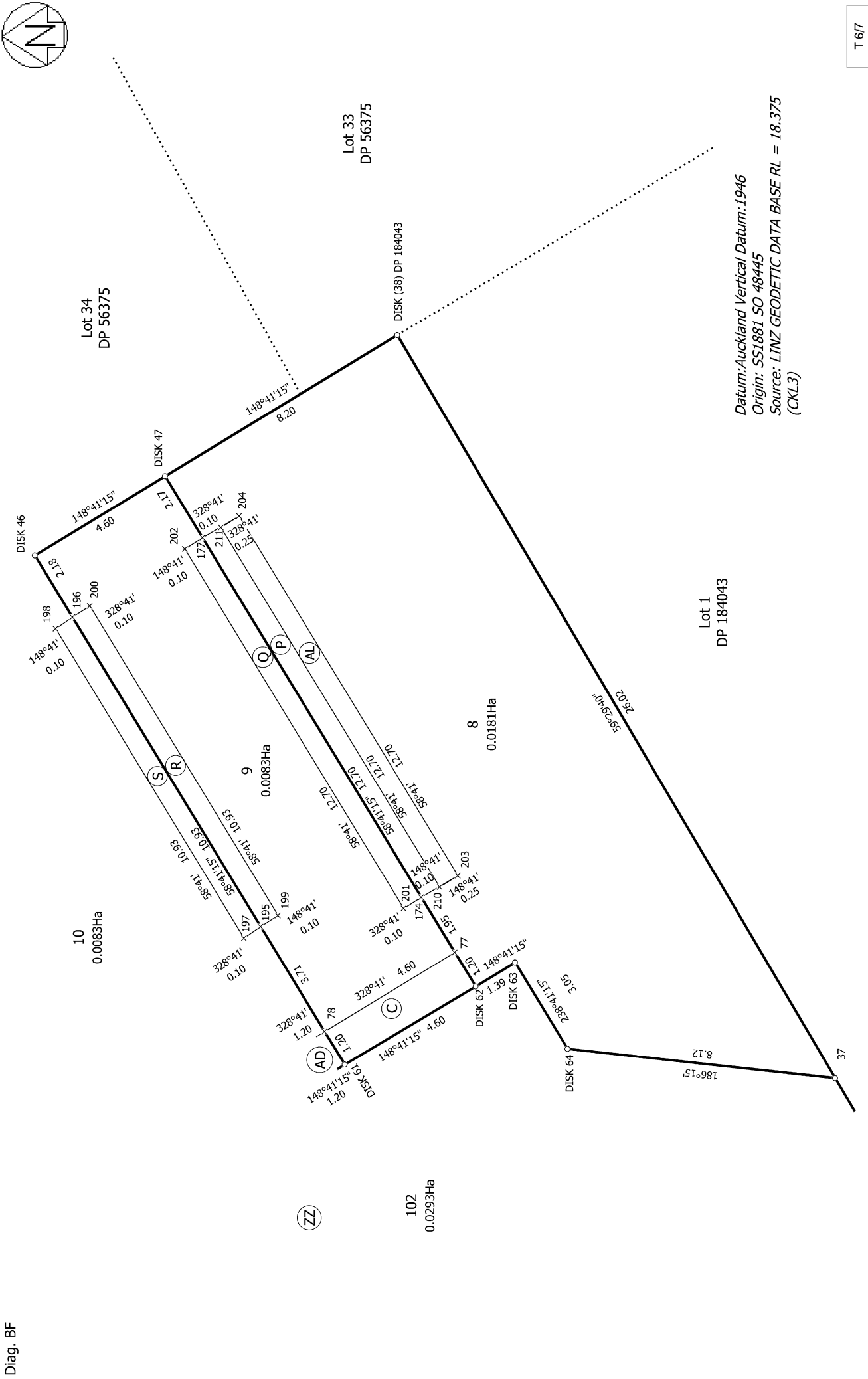
PIPE DP: 184043

T 4/7



T 5/7

<p>Land District: North Auckland</p> <p>Digitally Generated Plan</p> <p>Generated on: 01/02/2024 10:57:am Page 40 of 42</p>	<p>Lots 1 - 11, 16 - 21, 100, 102, Height Limited Lots 12 - 15 & 101 Being a Subdivision of Lots 37 & 38 DP 56375</p>	<p>Surveyor: Brian Patrick Cowley Firm: Mavens Associates Limited Date of Survey: 26/07/2023</p>	<p>Record of Survey DP 592929</p> <p>Deposited on: 20/12/2023</p>
--	--	--	---



T 6/7

Land District: North Auckland

Digitally Generated Plan

Generated on: 01/02/2024 10:57:am Page 41 of 42

Lots 1 - 11, 16 - 21, 100, 102, Height Limited Lots 12 - 15 & 101 Being a Subdivision of Lots 37 & 38 DP 56375

Surveyor: Brian Patrick Cowley
Firm: Maven Associates Limited
Date of Survey: 26/07/2023

Record of Survey
DP 592929
Deposited on: 20/12/2023

Datum: Auckland Vertical Datum: 1946
Origin: SSI881 SO 48445
Source: LINZ GEODETIC DATA BASE RL = 18.375
(CKL3)

