



# Record of Survey - DP 592818

---

<b>Survey Number</b>	DP 592818
<b>Surveyor Reference</b>	23021 - Summit
<b>Surveyor</b>	Kurt Eric Watson
<b>Survey Firm</b>	Survey & Planning Solutions (2010) Limited
<b>Surveyor Declaration</b>	I Kurt Eric Watson, being a licensed cadastral surveyor, certify that-- (a) this dataset provided by me and its related survey are accurate, correct and in accordance with the Cadastral Survey Act 2002 and Cadastral Survey Rules 2021; and (b) the survey was undertaken by me or under my personal direction. Declared on 26 Mar 2024 08:11 AM

---

## Survey Details

<b>Dataset Description</b>	Lots 1, 2 and 3 Being a Subdivision of Section 6 Suburbs of Rawene and Easement Over Section 3 Suburbs of Rawene		
<b>Purpose</b>	LT Subdivision		
<b>Status</b>	Deposited	<b>Type</b>	Survey
<b>Land District</b>	North Auckland	<b>Survey Class</b>	Class A
<b>Meridional Circuit</b>	Mount Eden 2000	<b>Vertical Datum</b>	None

---

## Survey Dates

<b>Surveyed Date</b>	13/07/2023	<b>Certified Date</b>	26/03/2024
<b>Submitted Date</b>	26/03/2024 08:11:55	<b>Survey Approval Date</b>	02/04/2024
<b>Deposit Date</b>	23/02/2024		

---

## Referenced Surveys

Survey Number	Land District	Bearing Correction
DP 163105	North Auckland	0°00'00"
SO 62316	North Auckland	0°00'00"
SO 13534	North Auckland	0°00'00"
DP 368049	North Auckland	0°00'00"
DP 421224	North Auckland	0°00'00"
LT 591317	North Auckland	0°00'00"

---

## Territorial Authorities

Far North District

---

## Comprised In

RT NA47A/427

---

## Created Parcels

Parcels	Parcel Intent	Area	RT Reference
Lot 1 Deposited Plan 592818	Fee Simple Title	0.0806 Ha	1138849
Lot 2 Deposited Plan 592818	Fee Simple Title	0.0802 Ha	1138850
Lot 3 Deposited Plan 592818	Fee Simple Title	0.1233 Ha	1138851
Area A Deposited Plan 592818	Easement		
Area B Deposited Plan 592818	Easement		



# Record of Survey - DP 592818

---

## Created Parcels

Parcels	Parcel Intent	Area	RT Reference
Area C Deposited Plan 592818	Easement		
Area D Deposited Plan 592818	Covenant - Land		
Area E Deposited Plan 592818	Easement		
Area F Deposited Plan 592818	Easement		
Area G Deposited Plan 592818	Easement		
Area H Deposited Plan 592818	Easement		
Area I Deposited Plan 592818	Easement		
Area J Deposited Plan 592818	Easement		
Area K Deposited Plan 592818	Easement		
Area L Deposited Plan 592818	Easement		
<b>Total Area</b>		<hr/> 0.2841 Ha	

# Mark and Vector

Survey Number DP 592818

Meridional Circuit Mount Eden 2000

From	To	Code	Bearing	Adpt Surv	Bearing Correction	Distance	Adpt Surv	Class
SM 1004 SO 62316	IS I DP 592818	ob0	238°50'40" M			252.66 M		
SM 1004 SO 62316	IS II DP 592818	ob1	240°03'41" M			321.94 M		
SM 1004 SO 62316	IS III DP 592818	ob2	235°06'51" M			282.24 M		
IS II DP 592818	IS I DP 592818	ob18	64°29'00" M			69.55 M		
IS II DP 592818	IS III DP 592818	ob19	90°54'00" M			47.47 M		
IS II DP 592818	IS 1 DP 421224	ob20	88°55'15" M			103.38 M		
IS I DP 592818	IS III DP 592818	ob6	206°29'00" M			34.30 M		
IS I DP 592818	IT 3 DP 368049	ob7	297°10'00" M			46.52 M		
IS I DP 592818	PEG 3D DP 368049	ob8	320°46'00" M			19.54 M		
IS 1 DP 421224	IB IV DP 163105	ob32	349°33'20" M			40.17 M		
IS 1 DP 421224	IT (1) SO 13534	ob33	168°49'10" M			86.26 M		
IS 1 DP 421224	IS I DP 592818	ob34	304°36'20" M			49.32 M		
IS 1 DP 421224	IS III DP 592818	ob35	267°14'00" M			55.96 M		
IB IV DP 163105	IT 3 DP 368049	ob39	277°26'30" A	DP 368049	0°00'00"	75.31 A	DP 368049	
IT 3 DP 368049	PEG 3D DP 368049	ob30	101°55'00" A	DP 368049	0°00'00"	29.68 A	DP 368049	
IS I DP 592818	IB IV DP 163105	ob9	70°57'00" M			35.24 M		
IS I DP 592818	PEG 2 DP 592818	ob10	311°02'00" M			22.37 M		
IS I DP 592818	PEG 3 DP 592818	ob11	187°40'30" M			24.77 M		
IS I DP 592818	PEG 4 DP 592818	ob12	250°12'00" M			11.13 M		
IS I DP 592818	PEG 1 DP 592818	ob13	89°58'00" M			29.48 M		
IS I DP 592818	PEG 6 DP 592818	ob14	124°03'00" M			37.96 M		
IB IV DP 163105	PEG (111) DP 163105	ob40	323°04'00" A	DP 163105	0°00'00"	9.28 A	DP 163105	
IT 3 DP 368049	PEG (118) DP 163105	ob31	186°18'00" A	DP 368049	0°00'00"	9.03 A	DP 368049	
PEG (118) DP 163105	PEG 2 DP 592818	ob43	84°35'00" A	SO 13534	0°00'00"	25.61 C		Class A
PEG 2 DP 592818	UNMK 218 DP 592818	ob23	84°35'00" A	SO 13534	0°00'00"	2.39 C		Class A
PEG 3D DP 368049	PEG (111) DP 163105	ob38	84°35'00" A	SO 13534	0°00'00"	40.24 C		Class A
IB IV DP 163105	PEG 6 DP 592818	ob41	183°15'30" A	DP 163105	0°00'00"	32.80 A	DP 163105	
PEG 4 DP 592818	UNMK 202 DP 592818	ob26	160°58'00" C			7.25 C		Class A

# Mark and Vector

Survey Number DP 592818

Meridional Circuit Mount Eden 2000

From	To	Code	Bearing	Adpt Surv	Bearing Correction	Distance	Adpt Surv	Class
UNMK 202 DP 592818	UNMK 203 DP 592818	ob48	160°58'00"	C		3.69 C		Class A
UNMK 203 DP 592818	UNMK 239 DP 592818	ob50	160°58'00"	C		9.59 C		Class A
PEG (111) DP 163105	PEG 1 DP 592818	ob42	174°43'00"	A DP 163105	0°00'00"	18.97 C		Class A
PEG 1 DP 592818	UNMK 232 DP 592818	ob28	174°43'00"	A DP 163105	0°00'00"	19.50 C		Class A
PEG 4 DP 592818	UNMK 214 DP 592818	ob27	84°35'00"	C		1.95 C		Class A
UNMK 200 DP 592818	UNMK 201 DP 592818	ob52	84°35'00"	C		3.96 C		Class A
UNMK 201 DP 592818	UNMK 216 DP 592818	ob54	84°35'00"	C		25.85 C		Class A
PEG 6 DP 592818	PEG 3 DP 592818	ob29	264°35'00"	A SO 13534	0°00'00"	34.91 C		Class A
PEG 3 DP 592818	PEG 5 DP 592818	ob25	264°35'00"	C		35.50 C		Class A
PEG (118) DP 163105	UNMK 204 DP 592818	ob44	174°42'30"	C		3.00 C		Class A
UNMK 204 DP 592818	UNMK 205 DP 592818	ob56	174°42'30"	C		2.30 C		Class A
UNMK 205 DP 592818	UNMK 207 DP 592818	ob57	174°42'30"	C		31.88 C		Class A
UNMK 207 DP 592818	UNMK 208 DP 592818	ob59	174°42'30"	C		3.01 C		Class A
UNMK 208 DP 592818	PEG 5 DP 592818	ob61	174°42'30"	C		0.16 C		Class A
SM 1004 SO 62316	SM 1018 SO 62316	ob3	267°16'00"	M		99.64 M		
IS 1 DP 421224	SM 1017A DP 421224	ob36	354°58'10"	A DP 421224	0°00'00"	133.48 A DP 421224		
SM 1017A DP 421224	SM 1018 SO 62316	ob63	76°32'40"	A DP 421224	0°00'00"	90.22 A DP 421224		
SM 1018 SO 62316	IT II SO 62316	ob22	85°34'20"	A SO 62316	0°00'00"	32.85 A SO 62316		
IT II SO 62316	SM 1004 SO 62316	ob64	88°05'50"	A SO 62316	0°00'00"	66.77 A SO 62316		
SM 1004 SO 62316	SM 1006 SO 62316	ob4	354°47'49"	M		500.94 M		
SM 1004 SO 62316	SM 1005 SO 62316	ob5	356°23'05"	A SO 62316	0°00'00"	380.20 A SO 62316		
SM 1005 SO 62316	SM 1006 SO 62316	ob65	349°49'30"	A LT 591317	0°00'00"	121.35 A LT 591317		
IS 1 DP 421224	IB 2 DP 421224	ob37	171°11'10"	A DP 421224	0°00'00"	105.09 A DP 421224		
IB 2 DP 421224	IT (1) SO 13534	ob66	1°47'00"	A DP 421224	0°00'00"	19.23 A DP 421224		
UNMK 200 DP 592818	UNMK 219 DP 592818	ob53	215°23'00"	C		0.53 C		Class A

# Mark and Vector

Survey Number DP 592818

Meridional Circuit Mount Eden 2000

From	To	Code	Bearing	Adpt Surv	Bearing Correction	Distance	Adpt Surv	Class
UNMK 201 DP 592818	UNMK 221 DP 592818	ob55	215°23'00"	C		0.52 C		Class A
UNMK 202 DP 592818	UNMK 209 DP 592818	ob49	215°23'00"	C		12.63 C		Class A
UNMK 209 DP 592818	UNMK 210 DP 592818	ob67	260°46'00"	C		12.11 C		Class A
UNMK 210 DP 592818	UNMK 207 DP 592818	ob68	260°46'00"	C		11.71 C		Class A
UNMK 203 DP 592818	UNMK 211 DP 592818	ob51	215°23'00"	C		11.74 C		Class A
UNMK 211 DP 592818	UNMK 208 DP 592818	ob69	260°46'00"	C		25.29 C		Class A
UNMK 205 DP 592818	UNMK 212 DP 592818	ob58	152°52'00"	C		20.02 C		Class A
UNMK 212 DP 592818	UNMK 213 DP 592818	ob70	149°03'00"	C		7.36 C		Class A
UNMK 213 DP 592818	UNMK 210 DP 592818	ob71	164°24'00"	C		5.94 C		Class A
PEG 2 DP 592818	UNMK 206 DP 592818	ob24	160°53'00"	C		3.09 C		Class A
UNMK 206 DP 592818	PEG 4 DP 592818	ob46	160°53'00"	C		16.45 C		Class A
UNMK 206 DP 592818	UNMK 204 DP 592818	ob47	264°35'00"	C		26.35 C		Class A
IS II DP 592818	PEG 5 DP 592818	ob17	85°08'00"	M		24.21 M		
UNMK 214 DP 592818	UNMK 215 DP 592818	ob72	84°35'00"	C		1.04 C		Class A
UNMK 215 DP 592818	UNMK 200 DP 592818	ob74	84°35'00"	C		4.80 C		Class A
UNMK 216 DP 592818	UNMK 217 DP 592818	ob76	84°35'00"	C		1.47 C		Class A
UNMK 217 DP 592818	PEG 1 DP 592818	ob78	84°35'00"	C		1.07 C		Class A
UNMK 221 DP 592818	UNMK 222 DP 592818	ob80	215°23'00"	C		1.32 C		Class A
UNMK 222 DP 592818	UNMK 203 DP 592818	ob82	215°23'00"	C		12.20 C		Class A
UNMK 219 DP 592818	UNMK 220 DP 592818	ob84	215°23'00"	C		1.32 C		Class A
UNMK 220 DP 592818	UNMK 202 DP 592818	ob86	215°23'00"	C		7.46 C		Class A
UNMK 218 DP 592818	PEG 3D DP 368049	ob88	84°35'00"	C		2.16 C		Class A
UNMK 217 DP 592818	UNMK 226 DP 592818	ob79	221°38'00"	C		2.33 C		Class A
UNMK 226 DP 592818	UNMK 227 DP 592818	ob89	263°16'00"	C		6.36 C		Class A

# Mark and Vector

Survey Number DP 592818

Meridional Circuit Mount Eden 2000

From	To	Code	Bearing	Adpt Surv	Bearing Correction	Distance	Adpt Surv	Class
UNMK 227 DP 592818	UNMK 228 DP 592818	ob90	280°17'00"	C		1.52 C		Class A
UNMK 228 DP 592818	UNMK 222 DP 592818	ob91	264°22'00"	C		18.99 C		Class A
UNMK 216 DP 592818	UNMK 223 DP 592818	ob77	221°38'00"	C		0.88 C		Class A
UNMK 223 DP 592818	UNMK 224 DP 592818	ob92	263°16'00"	C		5.83 C		Class A
UNMK 224 DP 592818	UNMK 225 DP 592818	ob93	280°17'00"	C		1.51 C		Class A
UNMK 225 DP 592818	UNMK 221 DP 592818	ob94	264°22'00"	C		18.26 C		Class A
UNMK 221 DP 592818	UNMK 219 DP 592818	ob81	264°22'00"	C		3.97 C		Class A
UNMK 222 DP 592818	UNMK 220 DP 592818	ob83	264°22'00"	C		3.97 C		Class A
UNMK 219 DP 592818	UNMK 229 DP 592818	ob85	264°22'00"	C		4.34 C		Class A
UNMK 229 DP 592818	UNMK 215 DP 592818	ob95	339°10'00"	C		0.43 C		Class A
UNMK 220 DP 592818	UNMK 230 DP 592818	ob87	264°22'00"	C		4.24 C		Class A
UNMK 230 DP 592818	UNMK 214 DP 592818	ob96	339°10'00"	C		1.47 C		Class A
UNMK 215 DP 592818	UNMK 218 DP 592818	ob75	339°10'00"	C		19.69 C		Class A
UNMK 214 DP 592818	UNMK 231 DP 592818	ob73	339°10'00"	C		16.57 C		Class A
UNMK 231 DP 592818	UNMK 206 DP 592818	ob97	264°35'00"	C		1.44 C		Class A
PEG (118) DP 163105	PEG (233) SO 13534	ob45	261°18'00"	A SO 13534	0°00'00"	60.81 A SO 13534		
PEG (233) SO 13534	PEG (234) SO 13534	ob98	168°58'00"	A SO 13534	0°00'00"	36.97 A SO 13534		
PEG (234) SO 13534	UNMK 235 DP 592818	ob99	84°35'00"	A SO 13534	0°00'00"	42.13 C		
UNMK 235 DP 592818	UNMK 236 DP 592818	ob100	84°35'00"	A SO 13534	0°00'00"	12.54 C		Class A
UNMK 236 DP 592818	PEG 5 DP 592818	ob101	84°35'00"	A SO 13534	0°00'00"	2.40 C		
UNMK 232 DP 592818	PEG 6 DP 592818	ob102	174°43'00"	A DP 163105	0°00'00"	1.87 C		Class A
UNMK 232 DP 592818	UNMK 237 DP 592818	ob103	261°11'00"	C		19.37 C		Class A
UNMK 237 DP 592818	UNMK 239 DP 592818	ob104	267°03'30"	C		15.93 C		Class A
UNMK 207 DP 592818	UNMK 238 DP 592818	ob60	260°46'00"	C		15.12 C		Class A

# Mark and Vector

Survey Number DP 592818

Meridional Circuit Mount Eden 2000

From	To	Code	Bearing	Adpt Surv	Bearing Correction	Distance	Adpt Surv	Class
UNMK 208 DP 592818	UNMK 236 DP 592818	ob62	260°46'00"	C		2.40 C		Class A
UNMK 238 DP 592818	UNMK 235 DP 592818	ob105	170°46'00"	C		2.17 C		Class A
UNMK 239 DP 592818	PEG 3 DP 592818	ob106	160°58'00"	C		1.45 C		Class A
UNMK 239 DP 592818	UNMK 211 DP 592818	ob107	267°03'30"	C		9.93 C		Class A
IS I DP 592818	PEG (118) DP 163105	ob16	286°07'00"	M		44.12 M		
IS III DP 592818	IB IV DP 163105	ob21	49°02'15"	M		64.38 M		
IS I DP 592818	SM 1018 SO 62316	ob15	42°48'40"	M		171.71 M		

Mark Name	Mark Condition	Description
PEG (111) DP 163105		found disturbed
PEG 6 DP 592818		Reinstates Peg DP 163105

\*\*\* End of Report \*\*\*

**LT 592818 Schedule/Memorandum**

Land registration district

North Auckland

Territorial authority

Far North District

**Memorandum of Easements**

Parcels shown with a prefix of *HL*- include height-limited boundaries

PURPOSE	SHOWN	BURDENED LAND	BENEFITED LAND
Right to drain sewage	A, F, G	Lot 2	Lot 1
" "	B	Lot 3	Lot 1, Lot 2
Right to drain water	C	Lot 3	Lot 1, Lot 2
" "	E, G, H	Lot 2	Lot 1
" "	I	Lot 1	Lot 2

**Schedule of Easements in Gross**

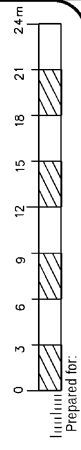
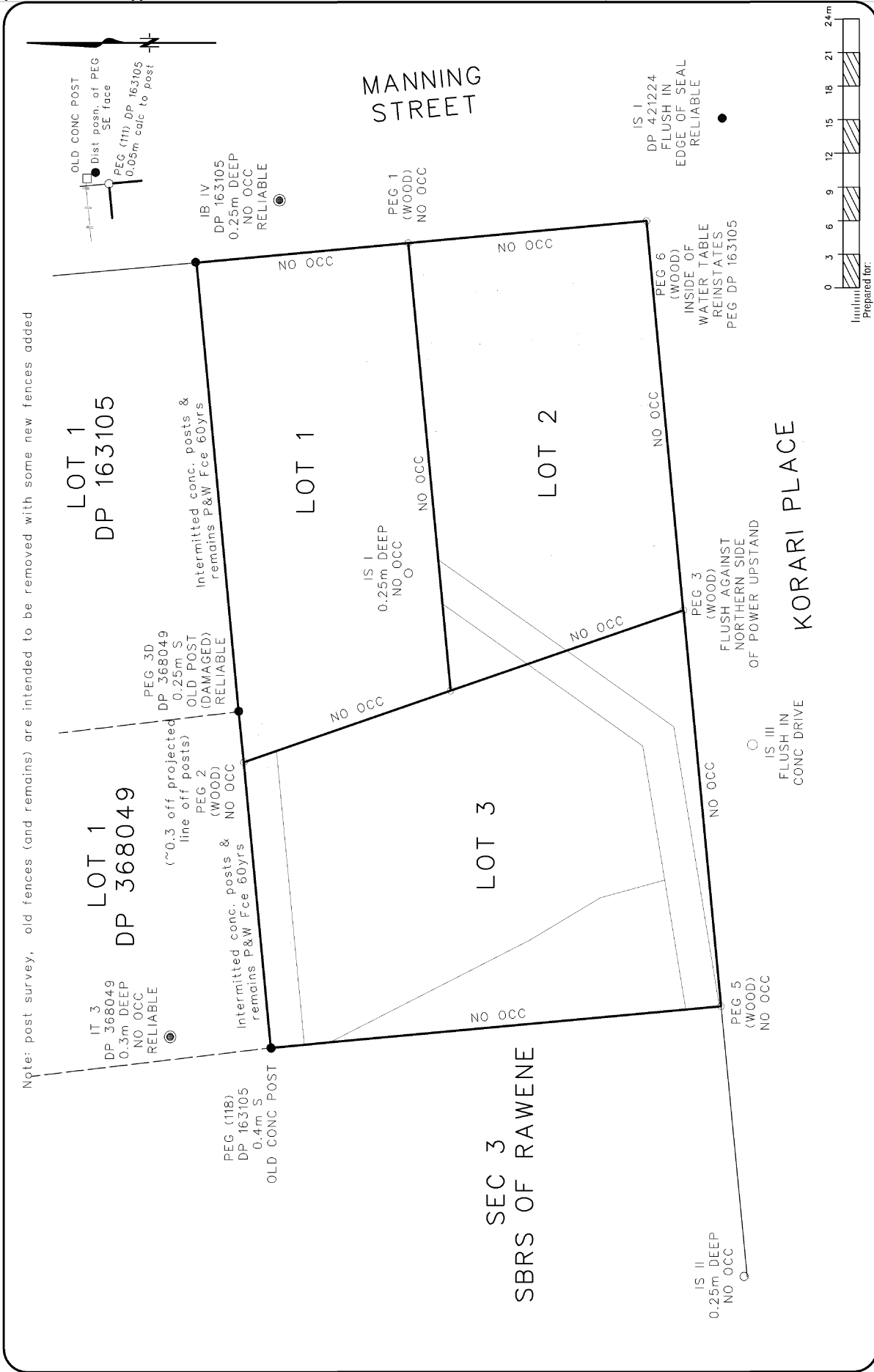
PURPOSE	SHOWN	BURDENED LAND	GRANTEE
Right to drain sewage	B	Lot 3	Far North District Council
" "	L	Section 3 SBRS OF Rawene	Far North District Council
Right to convey water	J	Lot 2	Far North District Council
" "	K	Lot 3	Far North District Council

**Notes**

Area marked D is to be subject to a land covenant (building restriction) pursuant to sec221(4) RMA [Consent Notice].



# Occupation Diagram



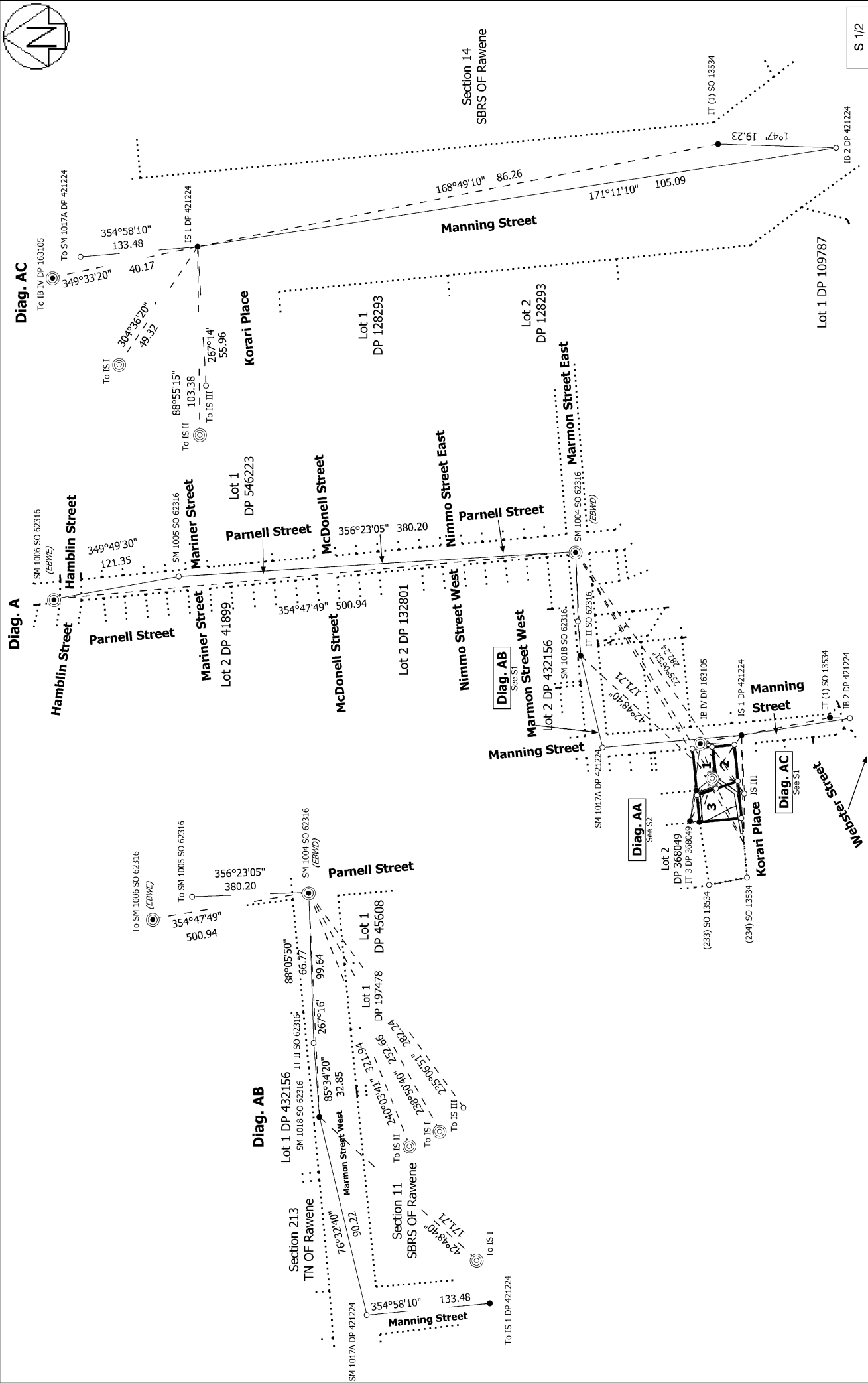
NO	DATE	REVISION

ORIGINAL SHEET SIZE

## OCCUPATION DIAGRAM

**WILLIAMS AND KING**  
 Registered Land Surveyors, Planners & Land Development Consultants  
 27 Hobson Ave  
 PO Box 597 Kaitiaki  
 Email: willk@waks.co.nz  
 Ph: (09) 407 8030





S 1/2

Record of Survey  
DP 592818

Surveyor: Kurt Eric Watson  
Firm: Survey & Planning Solutions (2010) L  
Date of Survey: 13/07/2023

Lots 1, 2 and 3 Being a Subdivision of Section 6 Suburbs of Rawene and  
Easement Over Section 3 Suburbs of Rawene

Land District: North Auckland  
Digitally Generated Plan  
Generated on: 02/04/2024 3:56pm Page 10 of 13

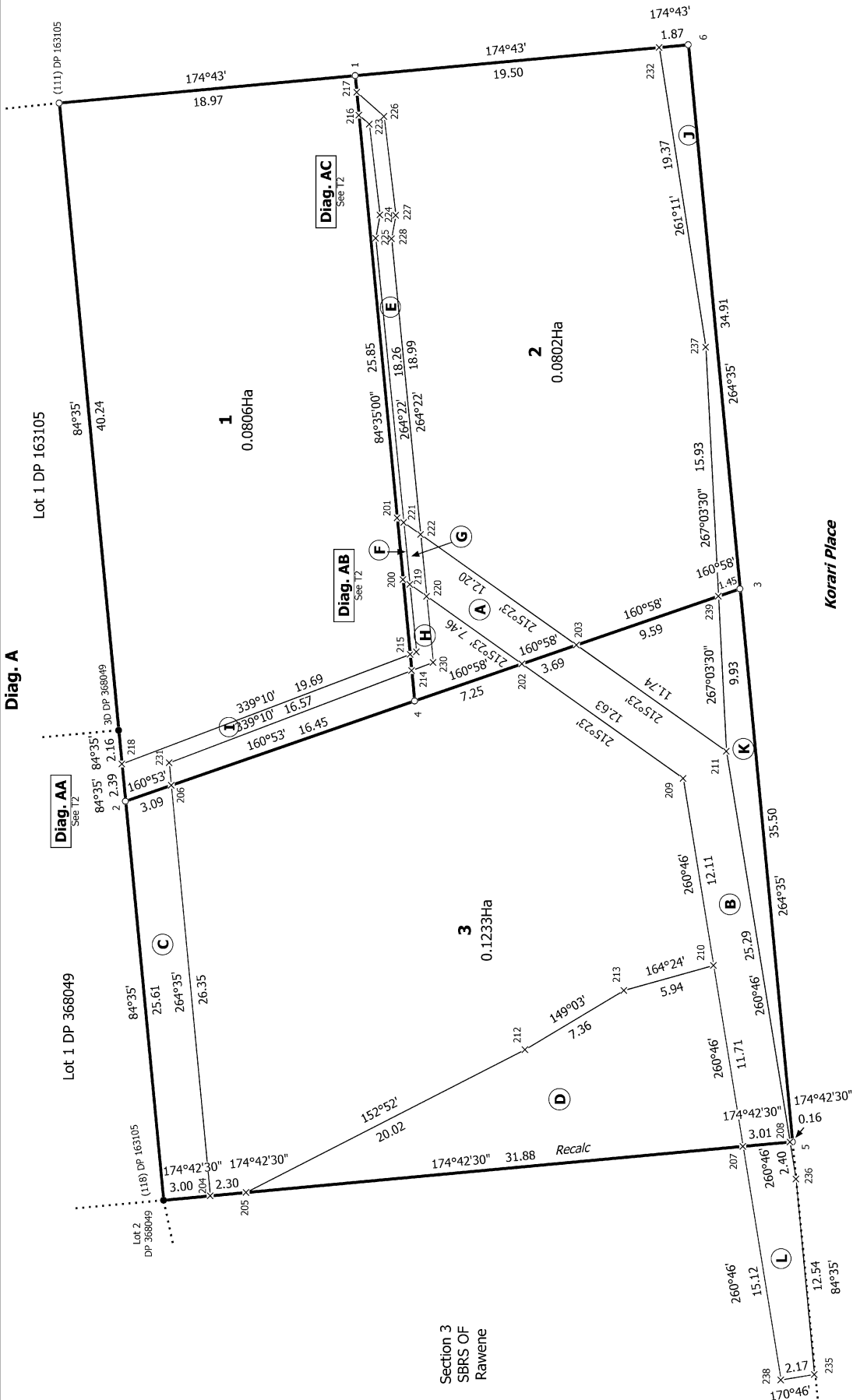
Deposited on: 23/02/2024





Manning Street

Korari Place



T 1/2

Land District: North Auckland

Digitally Generated Plan

Generated on: 02/04/2024 3:56pm Page 12 of 13

Lots 1, 2 and 3 Being a Subdivision of Section 6 Suburbs of Rawene and Easement Over Section 3 Suburbs of Rawene

Surveyor: Kurt Eric Watson  
Firm: Survey & Planning Solutions (2010) L  
Date of Survey: 13/07/2023

Record of Survey  
DP 592818  
Deposited on: 23/02/2024

