

# Record of Survey - DP 592582

**Survey Number** DP 592582  
**Surveyor Reference** 25379 - Cato  
**Surveyor** David Alexander Lawrie  
**Survey Firm** Madsen Lawrie Surveyors Ltd  
**Surveyor Declaration** I David Alexander Lawrie, being a licensed cadastral surveyor, certify that--  
 (a) this dataset provided by me and its related survey are accurate, correct and in accordance with the Cadastral Survey Act 2002 and Cadastral Survey Rules 2021; and  
 (b) the survey was undertaken by me or under my personal direction.  
 Declared on 06 Nov 2023 03:37 PM

## Survey Details

<b>Dataset Description</b>	Lots 10,13,12 Being Subdivision of Lots 3,7,9 DP 480353		
<b>Purpose</b>	LT Subdivision		
<b>Status</b>	Deposited	<b>Type</b>	Survey
<b>Land District</b>	North Auckland	<b>Survey Class</b>	Class B
<b>Meridional Circuit</b>	Mount Eden 2000	<b>Vertical Datum</b>	None

## Survey Dates

<b>Surveyed Date</b>	12/06/2023	<b>Certified Date</b>	06/11/2023
<b>Submitted Date</b>	06/11/2023 15:37:19	<b>Survey Approval Date</b>	07/11/2023
<b>Deposit Date</b>	13/10/2023		

## Referenced Surveys

Survey Number	Land District	Bearing Correction
DP 589251	North Auckland	0°00'00"
DP 24304	North Auckland	0°00'00"
DP 137325	North Auckland	0°00'00"
DP 9285	North Auckland	0°00'00"
DP 165576	North Auckland	0°00'00"
DP 358646	North Auckland	-0°00'30"
DP 364073	North Auckland	-0°00'30"
DP 480353	North Auckland	0°00'00"
DP 519131	North Auckland	0°00'00"

## Territorial Authorities

Auckland Council

## Comprised In

RT 671052  
 RT 671056  
 RT 671058

## Created Parcels

Parcels	Parcel Intent	Area	RT Reference
Lot 10 Deposited Plan 592582	Fee Simple Title	1.9983 Ha	1137912



# Record of Survey - DP 592582

---

## Created Parcels

Parcels	Parcel Intent	Area	RT Reference
Lot 12 Deposited Plan 592582	Fee Simple Title	34.1466 Ha	1137913
Lot 13 Deposited Plan 592582	Fee Simple Title	1.0689 Ha	1137914
Area C Deposited Plan 592582	Easement		
Area D Deposited Plan 592582	Easement		
Area E Deposited Plan 592582	Easement		
<b>Total Area</b>		<hr/> 37.2138 Ha	

# Mark and Vector

Survey Number DP 592582

Meridional Circuit Mount Eden 2000

From	To	Code	Bearing	Adpt Surv	Bearing Correction	Distance	Adpt Surv	Class
RM V DP 180550	AP 2 DP 519131	ob77	246°51'50"	A DP 519131	0°00'00"	150.66 A	DP 519131	
AP 2 DP 519131	RM 4 DP 519131	ob110	320°06'05"	A DP 519131	0°00'00"	114.62 A	DP 519131	
RM 4 DP 519131	IT III DP 165576	ob109	231°45'37"	M		1,147.51 M		
IT III DP 165576	IT VIII DP 137325	ob100	246°36'30"	M		55.37 M		
IT VIII DP 137325	IB I DP 358646	ob79	279°26'30"	A DP 480353	0°00'00"	96.16 A	DP 480353	
IB I DP 358646	IT IV DP 137325	ob1	268°12'40"	A DP 480353	0°00'00"	142.73 A	DP 480353	
IT III DP 165576	IT III DP 193685	ob101	92°49'27"	M		1,517.35 M		
IT IV DP 137325	IT IV DP 165576	ob2	17°37'30"	A DP 480353	0°00'00"	280.79 A	DP 480353	
IT IV DP 165576	IT I DP 165576	ob0	87°35'00"	A DP 480353	0°00'00"	165.52 A	DP 480353	
IT I DP 165576	IT III DP 165576	ob80	171°49'00"	M		266.62 M		
IT I DP 165576	RM V DP 180550	ob81	70°03'45"	A DP 480353	0°00'00"	1,224.71 A	DP 480353	
IT I DP 165576	IT VIII DP 165576	ob82	58°11'50"	M		335.41 M		
IT VIII DP 165576	IT III DP 165576	ob92	209°16'50"	M		505.22 M		
IT III DP 165576	IT VII DP 165576	ob102	52°21'50"	M		411.63 M		
IT VII DP 165576	IT VIII DP 165576	ob91	337°23'00"	M		205.09 M		
IT III DP 165576	IT IX DP 137325	ob103	66°36'20"	M		385.05 M		
IT IX DP 137325	IT VII DP 165576	ob86	344°26'30"	M		102.22 M		
IT IX DP 137325	IT VI DP 165576	ob87	196°21'30"	A DP 480353	0°00'00"	251.39 A	DP 480353	
IT VI DP 165576	IT I DP 165576	ob96	317°41'50"	A DP 480353	0°00'00"	476.26 A	DP 480353	
IT I DP 165576	IT XII DP 137325	ob83	94°01'15"	A DP 480353	0°00'00"	584.74 A	DP 480353	
IT XII DP 137325	IT IX DP 137325	ob98	249°57'20"	A DP 480353	0°00'00"	204.32 A	DP 480353	
IT I DP 165576	ABD 1K DP 480353	ob84	265°58'40"	A DP 480353	0°00'00"	110.27 A	DP 480353	
ABD 1K DP 480353	PEG (1) DP 165576	ob7	245°07'20"	A DP 480353	0°00'00"	42.00 A	DP 480353	Class B
PEG (1) DP 165576	PEG (2) DP 165576	ob22	221°42'00"	A DP 165576	0°00'00"	11.01 A	DP 165576	Class B
PEG (2) DP 165576	PEG 2C DP 480353	ob23	198°17'00"	A DP 480353	0°00'00"	80.62 A	DP 480353	Class B
PEG 2C DP 480353	PEG 4 DP 592582	ob4	198°17'00"	A DP 480353	0°00'00"	1.09 C		Class B
PEG 4 DP 592582	ABD 2B DP 480353	ob113	198°17'00"	A DP 480353	0°00'00"	8.93 C		Class B
ABD 2B DP 480353	IB I DP 358646	ob5	153°09'40"	A DP 480353	0°00'00"	168.56 A	DP 480353	

# Mark and Vector

Survey Number DP 592582

Meridional Circuit Mount Eden 2000

From	To	Code	Bearing	Adpt Surv	Bearing Correction	Distance	Adpt Surv	Class
ABD 2B DP 480353	ABD 2J DP 480353	ob6	112°35'00"	A DP 480353	0°00'00"	152.63	A DP 480353	Class B
ABD 2J DP 480353	ABD 2K DP 480353	ob64	185°47'00"	A DP 480353	0°00'00"	43.48	A DP 480353	Class B
ABD 2K DP 480353	ABD 2L DP 480353	ob65	219°46'30"	A DP 480353	0°00'00"	16.70	A DP 480353	Class B
PEG 3 DP 589251	PEG IA DP 358646	ob130	219°46'30"	A DP 589251	0°00'00"	16.10	A DP 589251	Class B
PEG IA DP 358646	UNMK (1) DP 364073	ob17	192°46'30"	A DP 480353	0°00'00"	44.04	A DP 480353	Class B
UNMK (1) DP 364073	UNMK (2) DP 364073	ob13	192°46'30"	A DP 480353	0°00'00"	2.14	A DP 480353	Class B
UNMK (2) DP 364073	UNMK (3) DP 364073	ob11	192°46'30"	A DP 480353	0°00'00"	9.90	A DP 480353	Class B
UNMK (3) DP 364073	UNMK (4) DP 364073	ob10	192°46'30"	A DP 480353	0°00'00"	2.14	A DP 480353	Class B
UNMK (4) DP 364073	PEG IB DP 358646	ob8	192°46'30"	A DP 480353	0°00'00"	9.08	A DP 480353	Class B
PEG IB DP 358646	PEG IC DP 358646	ob18	245°38'30"	A DP 480353	0°00'00"	28.31	A DP 480353	Class B
PEG IC DP 358646	PEG ID DP 358646	ob19	252°01'30"	A DP 480353	0°00'00"	7.34	A DP 480353	Class B
PEG ID DP 358646	PEG IE DP 358646	ob20	259°55'30"	A DP 480353	0°00'00"	6.42	A DP 480353	Class B
PEG IE DP 358646	POST (1) DP 137325	ob21	269°02'30"	A DP 358646	0°00'00"	6.24	A DP 358646	Class B
POST (1) DP 137325	PEG (3) DP 137325	ob24	275°29'00"	A DP 137325	0°00'00"	9.57	A DP 137325	Class B
PEG (3) DP 137325	AL PEG (1) DP 137325	ob25	288°39'30"	A DP 137325	0°00'00"	86.79	A DP 137325	Class B
AL PEG (1) DP 137325	PEG (6) DP 165576	ob26	198°17'00"	A DP 137325	0°00'00"	91.10	A DP 137325	Class B
PEG (6) DP 165576	PEG (20) DP 165576	ob27	83°22'20"	A DP 165576	0°00'00"	241.50	A DP 165576	Class B
PEG (20) DP 165576	PEG (21) DP 165576	ob51	83°22'20"	A DP 165576	0°00'00"	328.50	A DP 165576	Class B
PEG (21) DP 165576	IT VI DP 165576	ob49	72°45'00"	A DP 165576	0°00'00"	42.84	A DP 165576	
PEG (21) DP 165576	IS CCXXXII DP 9285	ob50	83°22'20"	A DP 480353	0°00'00"	212.50	A DP 480353	Class B
IS CCXXXII DP 9285	PEG (28) DP 137325	ob78	83°22'20"	A DP 480353	0°00'00"	9.37	A DP 24304	Class B
PEG (28) DP 137325	PEG (27) DP 24304	ob35	14°04'20"	A DP 24304	0°00'00"	11.91	A DP 480353	Class B
PEG (27) DP 24304	PEG (26) DP 165576	ob34	14°04'20"	A DP 24304	0°00'00"	108.09	A DP 480353	Class B
PEG (26) DP 165576	PEG (25) DP 9285	ob33	14°04'20"	A DP 24304	0°00'00"	36.93	A DP 165576	Class B

# Mark and Vector

Survey Number DP 592582

Meridional Circuit Mount Eden 2000

From	To	Code	Bearing	Adpt Surv	Bearing Correction	Distance	Adpt Surv	Class
PEG (25) DP 9285	PEG (36) DP 137325	ob32	39°26'00"	A DP 24304	0°00'00"	98.86 A	DP 137325	Class B
PEG (36) DP 137325	IT XII DP 137325	ob69	345°43'00"	A DP 137325	0°00'00"	71.89 A	DP 137325	
PEG (36) DP 137325	UNMK (2) DP 137325	ob70	39°26'00"	A DP 137325	0°00'00"	29.60 A	DP 137325	Class BD
UNMK (2) DP 137325	UNMK (1) DP 137325	ob28	328°58'00"	A DP 480353	0°00'00"	26.47 A	DP 480353	
UNMK (1) DP 137325	PEG (23) DP 137325	ob30	350°24'00"	A DP 137325	0°00'00"	1.00 A	DP 137325	Class BD
PEG (23) DP 137325	IT XII DP 137325	ob73	315°31'00"	A DP 137325	0°00'00"	32.43 A	DP 137325	
IT I DP 165576	ABD 1A DP 480353	ob85	51°04'10"	M		161.80 M		
ABD 1A DP 480353	PEG (15) DP 165576	ob59	65°07'20"	A DP 165576	0°00'00"	159.87 A	DP 165576	Class B
PEG (15) DP 165576	IT VIII DP 165576	ob56	61°11'00"	M		16.16 M		
PEG (15) DP 165576	UNMK (16) DP 165576	ob57	65°07'20"	A DP 165576	0°00'00"	3.00 A	DP 165576	Class B
UNMK (16) DP 165576	PEG (17) DP 165576	ob55	65°07'20"	A DP 165576	0°00'00"	3.00 A	DP 165576	Class B
PEG (17) DP 165576	PEG (19) DP 165576	ob54	46°46'00"	A DP 165576	0°00'00"	12.70 A	DP 165576	Class B
PEG (19) DP 165576	PEG (18) DP 165576	ob52	335°07'20"	A DP 165576	0°00'00"	6.00 A	DP 165576	Class B
PEG (18) DP 165576	PEG (13) DP 165576	ob53	65°07'20"	A DP 165576	0°00'00"	269.98 A	DP 165576	Class B
PEG (13) DP 165576	PEG (11) DP 137325	ob48	65°07'20"	A DP 165576	0°00'00"	137.52 A	DP 165576	Class B
PEG (11) DP 137325	PEG (12) DP 137325	ob46	192°57'00"	A DP 137325	0°00'00"	55.13 A	DP 137325	Class B
PEG (12) DP 137325	PEG (8) DP 137325	ob47	130°06'00"	A DP 137325	0°00'00"	31.56 A	DP 137325	Class B
PEG (8) DP 137325	PEG (32) DP 137325	ob43	97°59'00"	A DP 137325	0°00'00"	73.52 A	DP 137325	Class B
PEG (32) DP 137325	PEG (31) DP 137325	ob39	149°58'00"	A DP 137325	0°00'00"	24.32 A	DP 137325	Class B
PEG (31) DP 137325	PEG (29) DP 137325	ob38	94°20'00"	A DP 137325	0°00'00"	31.77 A	DP 137325	Class B
PEG (29) DP 137325	PEG (30) DP 137325	ob36	192°55'00"	A DP 137325	0°00'00"	101.60 A	DP 137325	Class B
PEG (30) DP 137325	PEG (33) DP 165576	ob37	231°36'00"	A DP 165576	0°00'00"	84.05 A	DP 165576	Class B
PEG (33) DP 165576	PEG (35) DP 137325	ob40	231°36'00"	A DP 165576	0°00'00"	22.00 A	DP 165576	Class B
PEG (35) DP 137325	PEG (34) DP 137325	ob42	169°20'00"	A DP 137325	0°00'00"	26.96 A	DP 137325	Class B

# Mark and Vector

Survey Number DP 592582

Meridional Circuit Mount Eden 2000

From	To	Code	Bearing	Adpt Surv	Bearing Correction	Distance	Adpt Surv	Class
PEG (34) DP 137325	PEG (9) DP 137325	ob41	230°09'00"	A DP 137325	0°00'00"	24.53 A	DP 137325	Class B
PEG (9) DP 137325	PEG (10) DP 137325	ob44	192°27'00"	A DP 137325	0°00'00"	24.99 A	DP 137325	Class B
PEG (10) DP 137325	PEG (22) DP 137325	ob45	230°28'00"	A DP 137325	0°00'00"	58.76 A	DP 137325	Class B
PEG (22) DP 137325	PEG (24) DP 137325	ob29	194°27'00"	A DP 137325	0°00'00"	29.96 A	DP 137325	Class B
PEG (24) DP 137325	PEG (23) DP 137325	ob31	170°24'00"	A DP 137325	0°00'00"	15.83 A	DP 137325	Class B
ABD 1A DP 480353	ABD 1B DP 480353	ob60	155°04'30"	A DP 480353	0°00'00"	125.01 A	DP 480353	Class B
ABD 1B DP 480353	IT I DP 165576	ob66	273°45'00"	M		178.94 M		
ABD 1B DP 480353	ABD 1C DP 480353	ob67	245°07'20"	A DP 480353	0°00'00"	30.10 A	DP 480353	Class B
ABD 1C DP 480353	ABD 1D DP 480353	ob76	245°07'20"	A DP 480353	0°00'00"	50.00 A	DP 480353	Class B
ABD 1D DP 480353	ABD 1E DP 480353	ob74	335°07'20"	A DP 480353	0°00'00"	125.00 A	DP 480353	Class B
ABD 1E DP 480353	ABD 1F DP 480353	ob71	245°07'20"	A DP 480353	0°00'00"	10.00 A	DP 480353	Class B
ABD 1F DP 480353	ABD 1G DP 480353	ob72	155°07'20"	A DP 480353	0°00'00"	125.00 A	DP 480353	Class B
ABD 1G DP 480353	ABD 1H DP 480353	ob75	245°07'20"	A DP 480353	0°00'00"	60.00 A	DP 480353	Class B
ABD 1H DP 480353	ABD 1N DP 480353	ob61	155°07'20"	A DP 480353	0°00'00"	72.92 A	DP 480353	Class B
ABD 1N DP 480353	ABD 2I DP 480353	ob62	245°07'20"	A DP 480353	0°00'00"	93.66 A	DP 480353	Class B
ABD 2I DP 480353	ABD 2H DP 480353	ob63	292°35'00"	A DP 480353	0°00'00"	54.04 A	DP 480353	Class B
ABD 2H DP 480353	IB I DP 358646	ob15	202°35'00"	A DP 480353	0°00'00"	119.64 A	DP 480353	
ABD 2H DP 480353	ABD 1L DP 480353	ob16	6°30'00"	A DP 480353	0°00'00"	38.76 A	DP 480353	Class B
ABD 1L DP 480353	ABD 1K DP 480353	ob3	335°07'20"	A DP 480353	0°00'00"	125.00 A	DP 480353	Class B
PEG 4 DP 592582	PEG 3 DP 592582	ob114	112°12'20"	C		126.74 C		Class B
PEG 3 DP 592582	ABD 2H DP 480353	ob112	105°18'00"	C		2.00 C		Class B
ABD 1B DP 480353	PEG 2 DP 592582	ob68	65°07'30"	C		95.83 C		Class B
PEG 2 DP 592582	PEG 1 DP 592582	ob111	65°07'30"	C		63.94 C		Class B
PEG 1 DP 592582	PEG (15) DP 165576	ob108	335°07'30"	C		125.05 C		Class B

# Mark and Vector

Survey Number DP 592582

Meridional Circuit Mount Eden 2000

From	To	Code	Bearing	Adpt Surv	Bearing Correction	Distance	Adpt Surv	Class
IT XII DP 137325	IT XIII DP 137325	ob99	61°01'00"	A DP 480353	0°00'00"	70.94 A	DP 480353	
IT XIII DP 137325	IT XIV DP 137325	ob97	43°00'00"	A DP 480353	0°00'00"	75.42 A	DP 480353	
IT XIV DP 137325	IT XVI DP 137325	ob95	161°24'30"	A DP 480353	0°00'00"	81.42 A	DP 480353	
IT XVI DP 137325	IT XV DP 137325	ob93	236°14'00"	A DP 480353	0°00'00"	91.33 A	DP 480353	
IT XV DP 137325	IT IX DP 137325	ob94	262°56'30"	A DP 480353	0°00'00"	257.41 A	DP 480353	
IT III DP 165576	PEG 2C DP 480353	ob104	305°06'30"	M		267.28 M		
IT III DP 165576	PEG 4 DP 592582	ob105	304°53'10"	M		266.96 M		
IT III DP 165576	PEG 3 DP 592582	ob106	315°52'00"	M		146.00 M		
IT III DP 165576	ABD 2H DP 480353	ob107	316°16'20"	M		144.28 M		
IT IX DP 137325	ABD 1B DP 480353	ob88	295°01'30"	M		234.84 M		
IT IX DP 137325	PEG 2 DP 592582	ob89	317°58'40"	M		187.99 M		
IT IX DP 137325	PEG 1 DP 592582	ob90	337°50'20"	M		179.84 M		
UNMK (4) DP 364073	UNMK (17) DP 364073	ob9	82°17'30"	A DP 480353	0°00'00"	31.37 A	DP 480353	Class B
UNMK (17) DP 364073	UNMK (16) DP 364073	ob115	103°59'30"	A DP 480353	0°00'00"	20.42 A	DP 480353	Class B
UNMK (16) DP 364073	UNMK (15) DP 364073	ob116	31°08'30"	A DP 480353	0°00'00"	5.55 A	DP 480353	Class B
UNMK (15) DP 364073	UNMK (14) DP 364073	ob117	92°54'00"	A DP 480353	0°00'00"	30.88 A	DP 480353	Class B
UNMK (14) DP 364073	UNMK (7) DP 364073	ob118	12°22'00"	A DP 480353	0°00'00"	2.03 A	DP 480353	Class B
UNMK (7) DP 364073	UNMK (8) DP 364073	ob119	272°54'00"	A DP 480353	0°00'00"	32.41 A	DP 480353	Class B
UNMK (8) DP 364073	UNMK (9) DP 364073	ob121	211°08'30"	A DP 480353	0°00'00"	5.27 A	DP 480353	Class B
UNMK (9) DP 364073	UNMK (10) DP 364073	ob122	283°59'30"	A DP 480353	0°00'00"	19.33 A	DP 480353	Class B
UNMK (10) DP 364073	UNMK (3) DP 364073	ob123	262°17'30"	A DP 480353	0°00'00"	31.00 A	DP 480353	Class B
UNMK (2) DP 364073	UNMK (5) DP 364073	ob12	81°44'30"	A DP 480353	0°00'00"	0.57 A	DP 480353	Class B
UNMK (5) DP 364073	UNMK (6) DP 364073	ob124	93°27'30"	A DP 480353	0°00'00"	82.50 A	DP 480353	Class B
UNMK (6) DP 364073	UNMK (11) DP 364073	ob125	12°22'00"	A DP 480353	0°00'00"	2.03 A	DP 480353	Class B

# Mark and Vector

Survey Number DP 592582

Meridional Circuit Mount Eden 2000

From	To	Code	Bearing	Adpt Surv	Bearing Correction	Distance	Adpt Surv	Class
UNMK (11) DP 364073	UNMK (1) DP 364073	ob126	273°27'30"	A DP 480353	0°00'00"	83.02 A	DP 480353	Class B
UNMK (11) DP 364073	UNMK (12) DP 364073	ob127	93°27'30"	A DP 480353	0°00'00"	1.62 A	DP 480353	Class B
UNMK (12) DP 364073	UNMK (13) DP 364073	ob128	183°27'30"	A DP 480353	0°00'00"	6.41 A	DP 480353	Class B
UNMK (13) DP 364073	UNMK (14) DP 364073	ob129	272°54'00"	A DP 480353	0°00'00"	2.63 A	DP 480353	Class B
UNMK (7) DP 364073	UNMK (6) DP 364073	ob120	12°22'00"	A DP 480353	0°00'00"	2.46 A	DP 480353	Class B
ABD 2L DP 480353	PEG 3 DP 589251	ob14	219°46'30"	A DP 589251	0°00'00"	59.05 A	DP 589251	Class B

Mark Name	Mark Condition	Description
ABD 1B DP 480353		ABD in wooden strainer post
ABD 1C DP 480353		ABD in wooden strainer post
ABD 1D DP 480353		ABD in wooden strainer post
ABD 1E DP 480353		ABD in wooden strainer post
ABD 1F DP 480353		ABD in wooden strainer post
ABD 1G DP 480353		ABD in wooden strainer post
ABD 1H DP 480353		ABD in wooden strainer post
ABD 1K DP 480353		ABD in wooden strainer post
ABD 1L DP 480353		ABD in wooden strainer post
ABD 1N DP 480353		ABD in wooden strainer post
ABD 2B DP 480353		ABD in wooden strainer post
ABD 2H DP 480353		ABD in wooden strainer post
ABD 2I DP 480353		ABD in wooden strainer post
ABD 2J DP 480353		ABD in wooden strainer post
ABD 2K DP 480353		ABD in wooden strainer post
ABD 2L DP 480353		ABD in wooden strainer post
IS CCXXXII DP 9285		Iron Spike 0.05 deep in fenceline
IT I DP 165576		Down 0.20 in paddock
IT III DP 165576		Down 0.2m in paddock
IT III DP 193685		Down 0.10 at top of bank
IT IV DP 137325		Tube 0.4m deep in metal shoulder.
IT IV DP 165576		IT IV DP 53918 Disturbed
IT IX DP 137325		Down 0.20 and 2.0 south of farm race
IT VI DP 165576		Iron Tube 0.3m deep in paddock
IT VII DP 165576		Down 0.30 in paddock



# Mark and Vector

**Survey Number** DP 592582  
**Meridional Circuit** Mount Eden 2000

Mark Name	Mark Condition	Description
IT VIII DP 137325		Down 0.30 in paddock
IT VIII DP 165576		Down 0.30 in paddock
IT XII DP 137325		Iron Tube in paddock 0.1m above ground level
IT XIII DP 137325		Iron Tube 0.2m deep in paddock
IT XIV DP 137325		Iron Tube 0.2m deep in paddock
IT XV DP 137325		Iron Tube 0.2m deep in paddock
IT XVI DP 137325		Iron Tube 0.2m deep in paddock
PEG 2C DP 480353		Wooden Peg in fenceline
RM 4 DP 519131		Plaque in channel
RM V DP 180550	Destroyed	This mark was looked for 21 Jan 2021 but not found.

**\*\*\* End of Report \*\*\***

# Schedule / Memorandum

Land Registration District

**North Auckland**

Survey Number

**LT 592582**

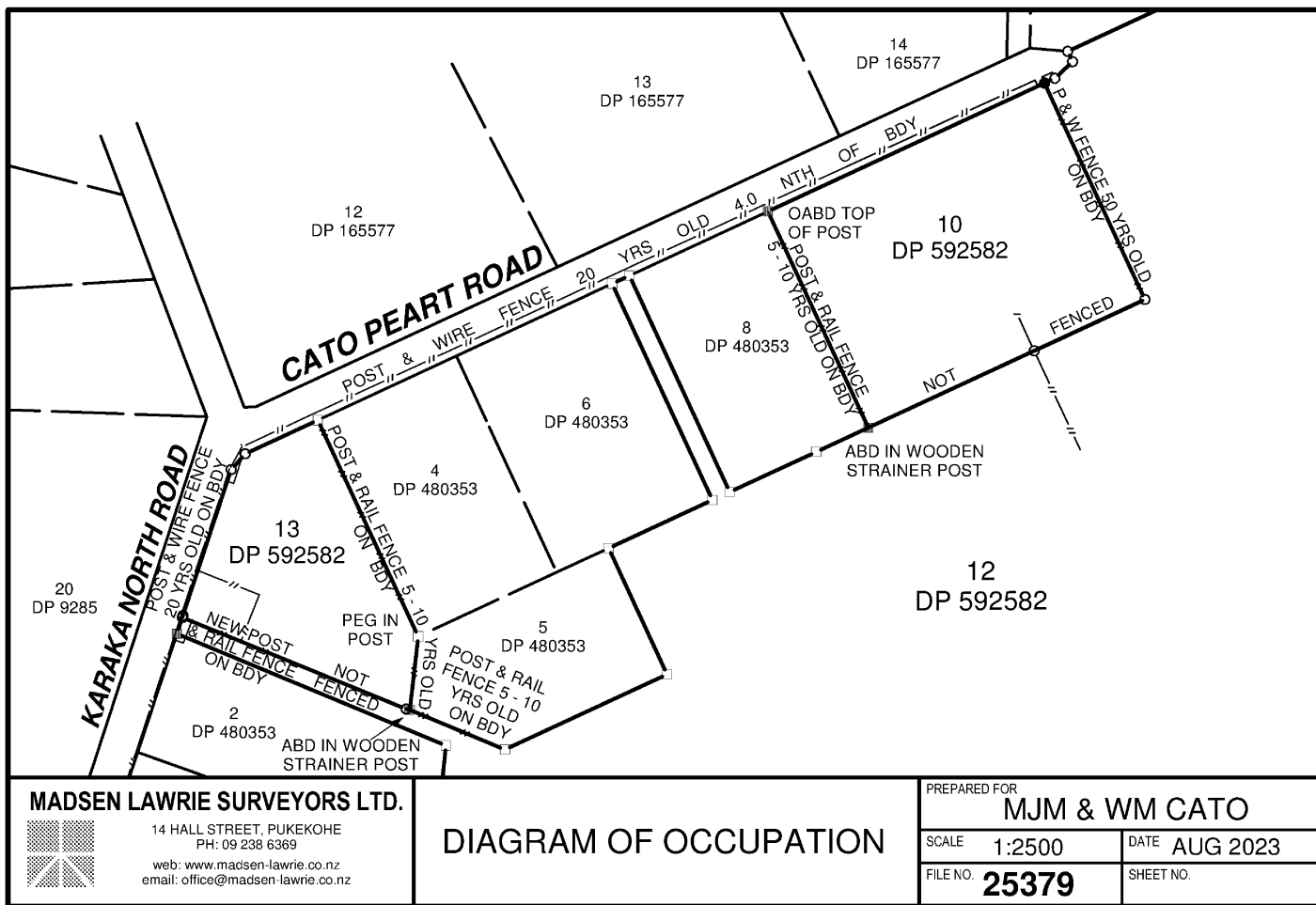
Territorial Authority (the Council)

**Auckland Council**

## Schedule of Existing Easements

Last Edited: 05 Jul 2023 10:09:28

<u>Purpose</u>	<u>Shown</u>	<u>Burdened Land</u> <u>(Servient Tenement)</u>	<u>Creating Document Reference</u>
Right to convey electricity	C, D	Lot 12	EI 6727052.7
Water Supply	D, E	Lot 12	EI 6727052.7



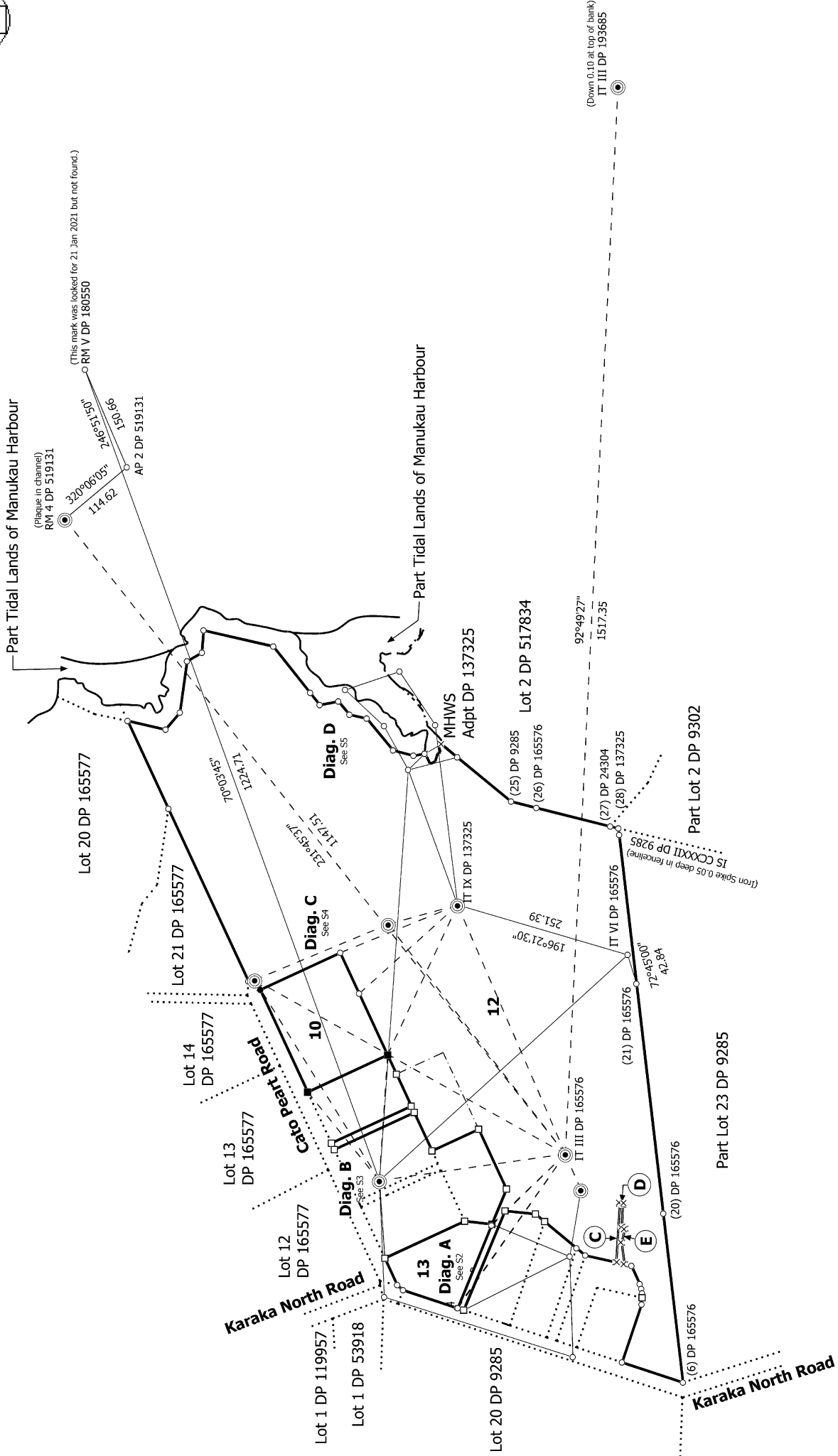
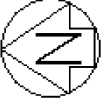
**MADSEN LAWRIE SURVEYORS LTD.**



14 HALL STREET, PUKEKOHE  
 PH: 09 238 6369  
 web: www.madsen-lawrie.co.nz  
 email: office@madsen-lawrie.co.nz

**DIAGRAM OF OCCUPATION**

PREPARED FOR		<b>MJM &amp; WM CATO</b>	
SCALE	1:2500	DATE	AUG 2023
FILE NO.	<b>25379</b>	SHEET NO.	



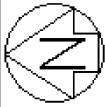
S 1/5

Land District: North Auckland  
 Digitally Generated Plan  
 Generated on: 08/11/2023 11:51:am Page 12 of 21

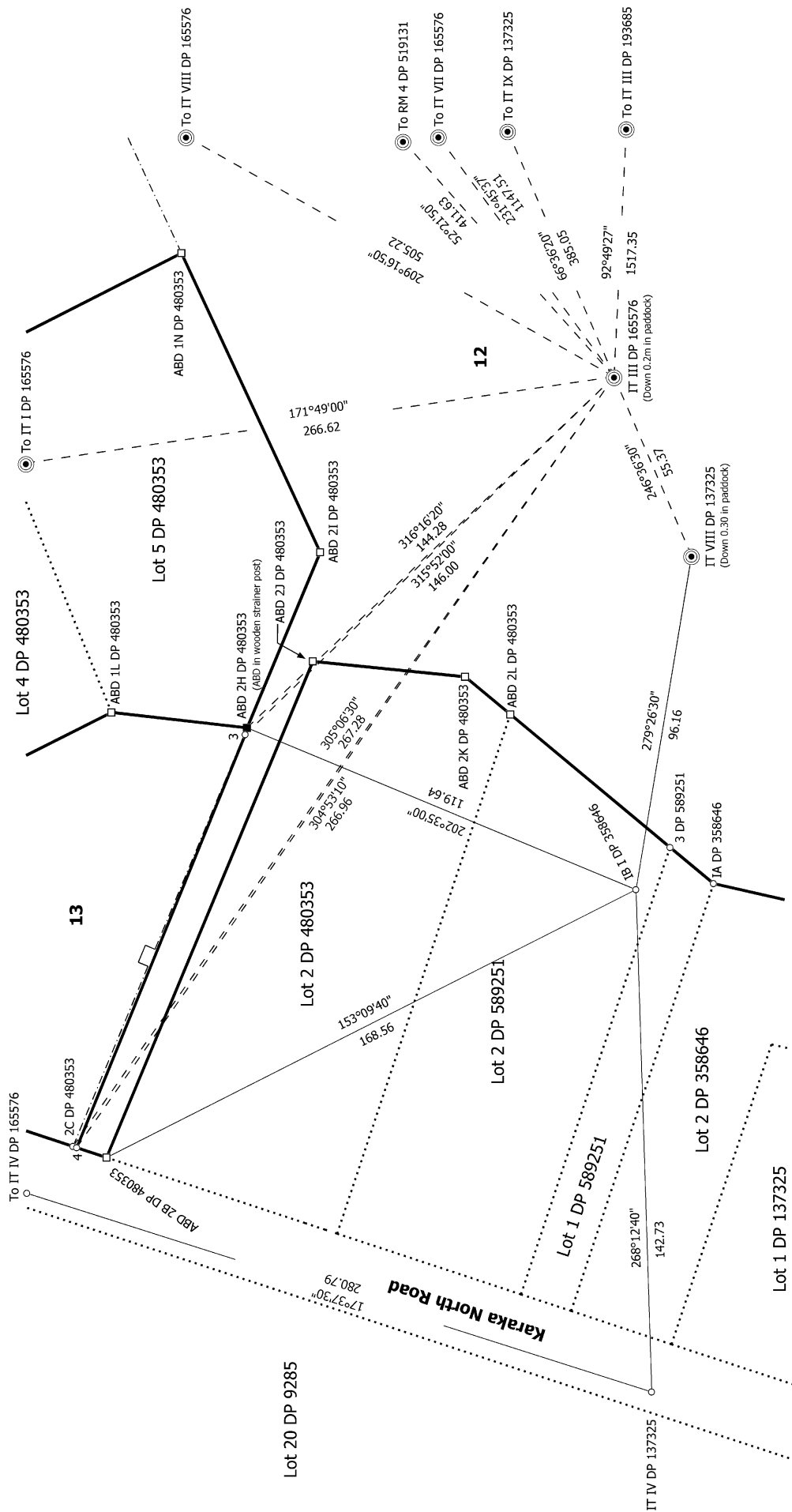
Lots 10,13,12 Being Subdivision of Lots 3,7,9 DP 480353

Surveyor: David Alexander Lawrie  
 Firm: Madsen Lawrie Surveyors Ltd  
 Date of Survey: 12/06/2023

Record of Survey  
 DP 592582  
 Deposited on: 13/10/2023

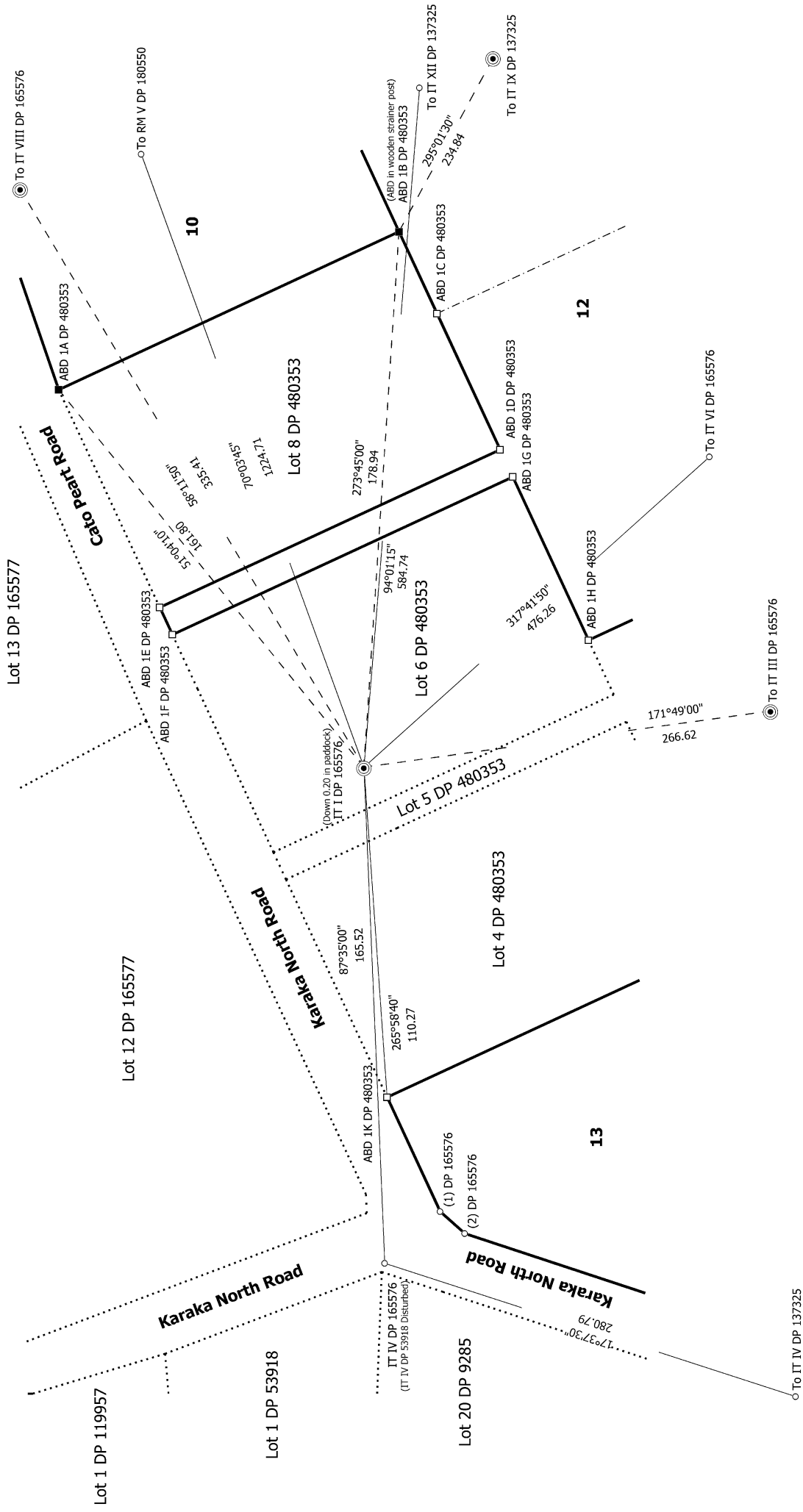


Diag. A





**Diag. B**

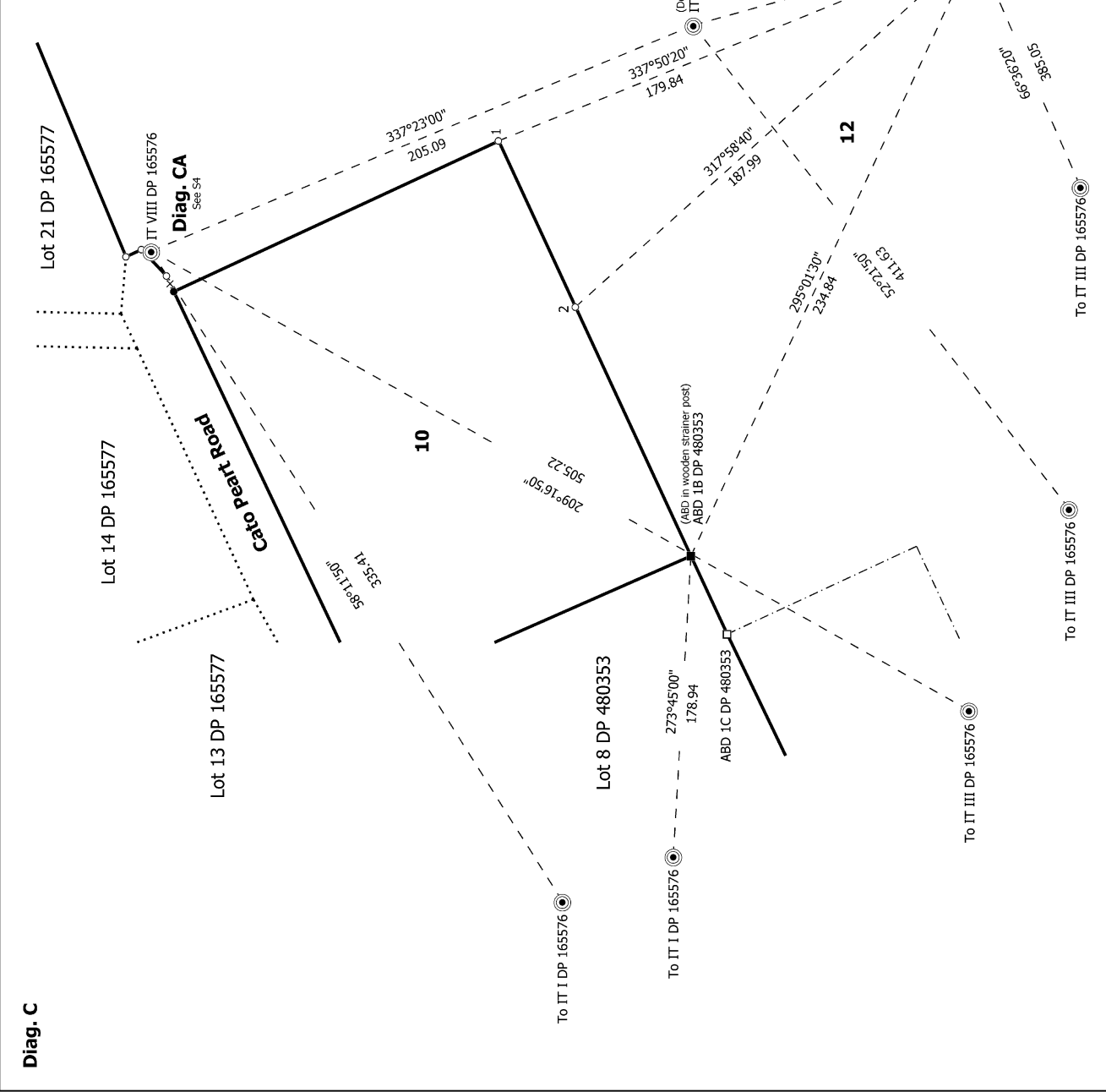
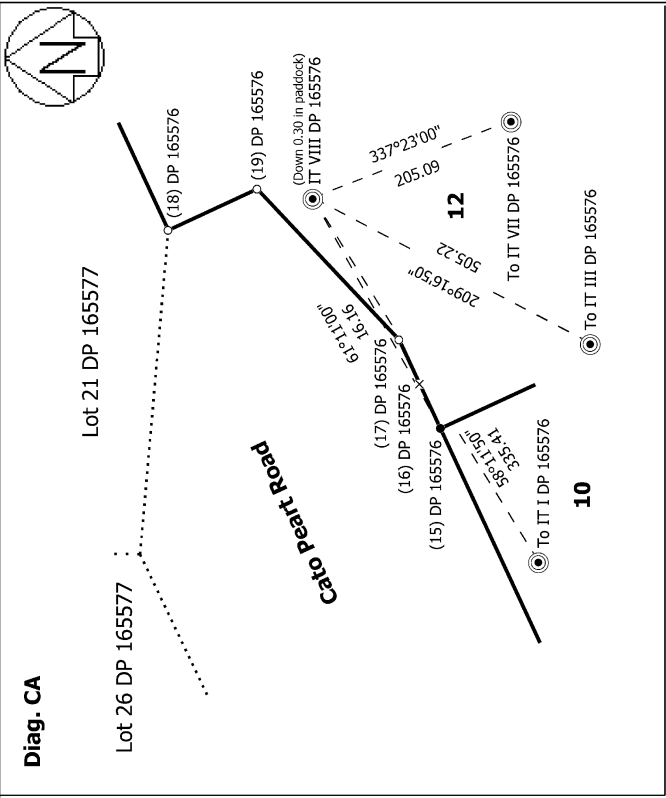


S 3/5

**Lots 10,13,12 Being Subdivision of Lots 3,7,9 DP 480353**

Surveyor: David Alexander Lawrie  
 Firm: Madsen Lawrie Surveyors Ltd  
 Date of Survey: 12/06/2023

**Record of Survey**  
**DP 592582**  
 Deposited on: 13/10/2023



S 4/5

Record of Survey  
DP 592582

Deposited on: 13/10/2023

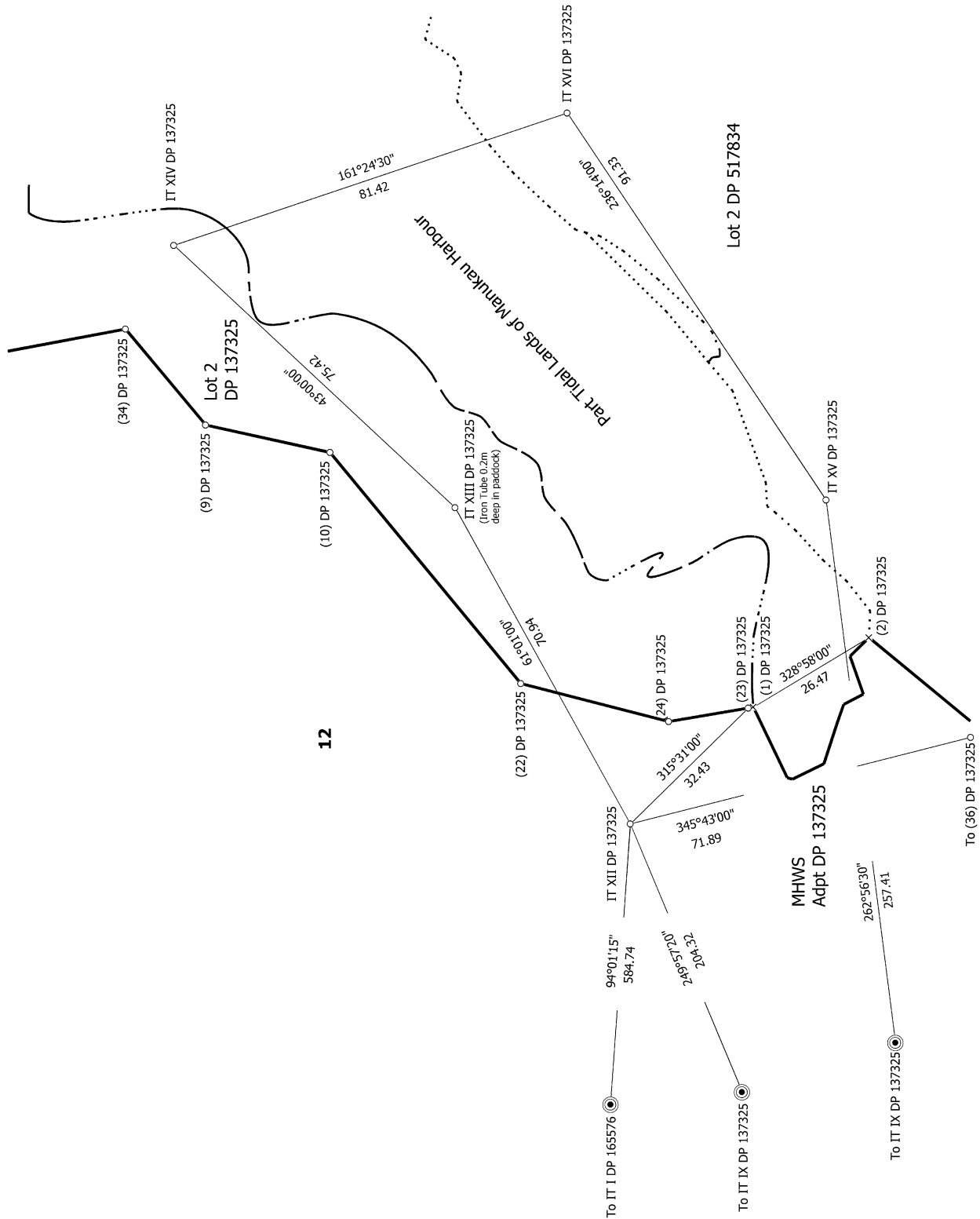
Surveyor: David Alexander Lawrie  
Firm: Madsen Lawrie Surveyors Ltd  
Date of Survey: 12/06/2023

Lots 10, 11, 12 Being Subdivision of Lots 3, 7, 9 DP 480353

Land District: North Auckland  
**Digitally Generated Plan**  
Generated on: 08/11/2023 11:51 am | Page 15 of 21



Diag. D



S 5/5

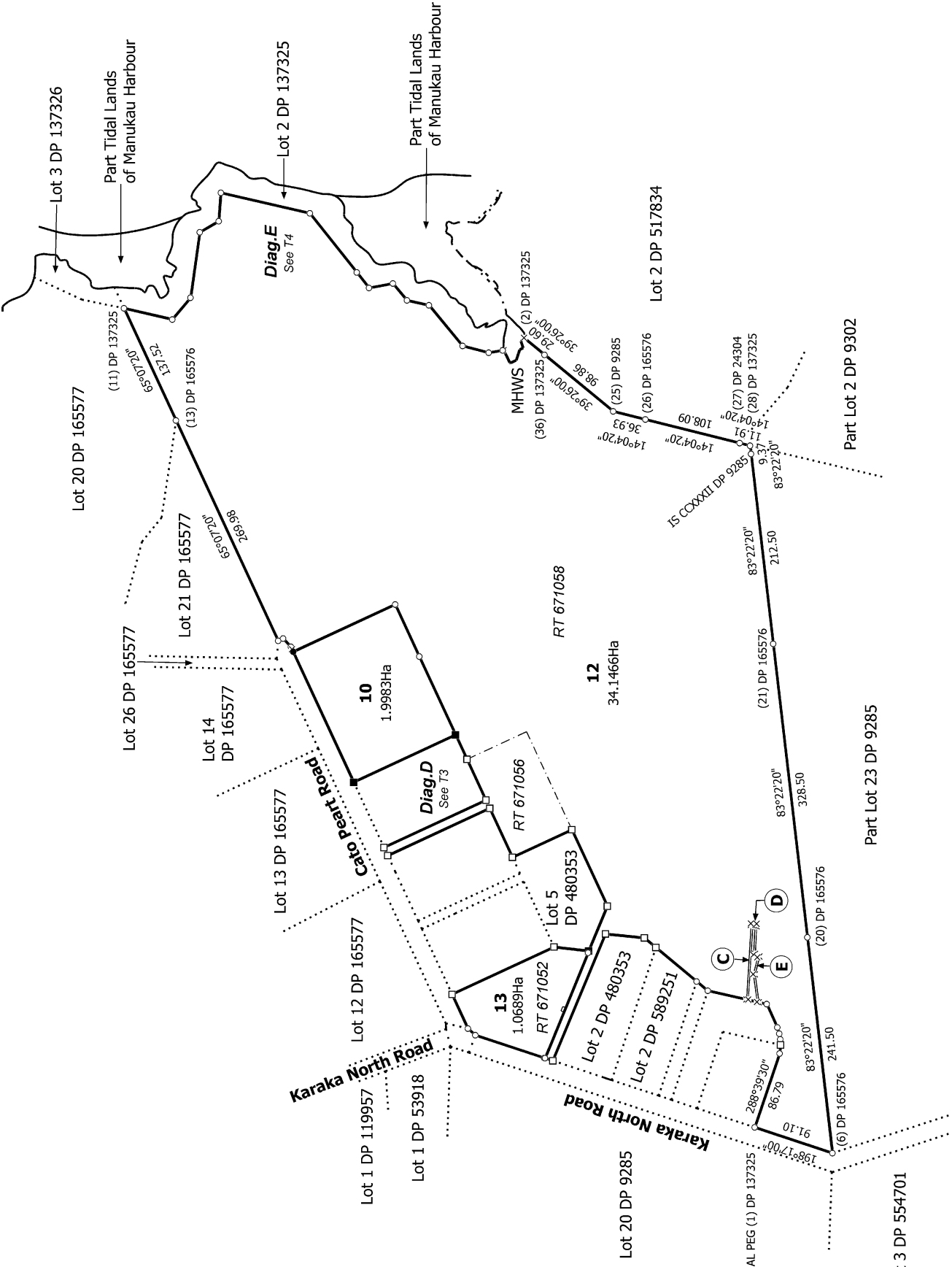
Record of Survey  
 DP 592582  
 Deposited on: 13/10/2023

Surveyor: David Alexander Lawrie  
 Firm: Madsen Lawrie Surveyors Ltd  
 Date of Survey: 12/06/2023

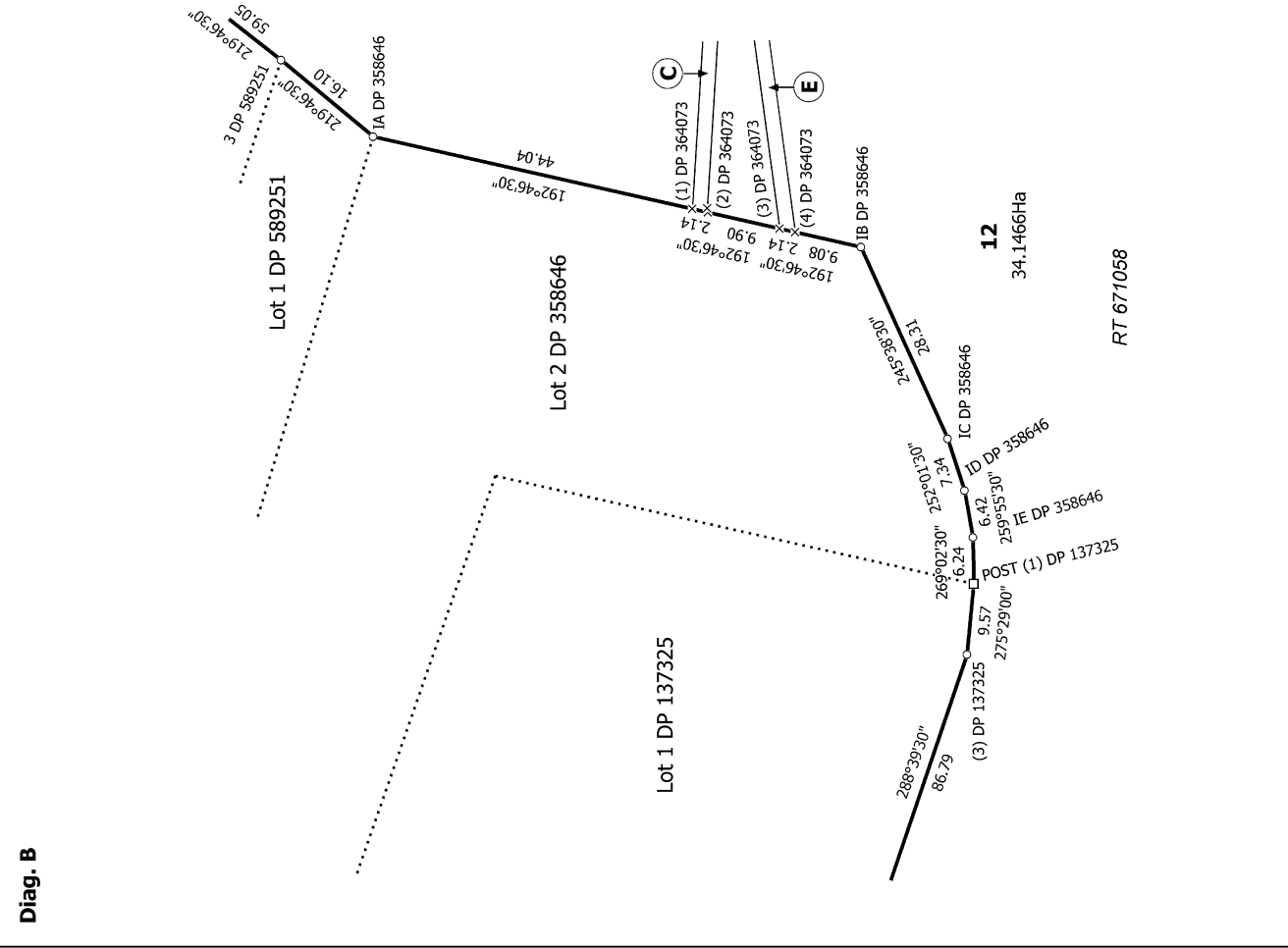
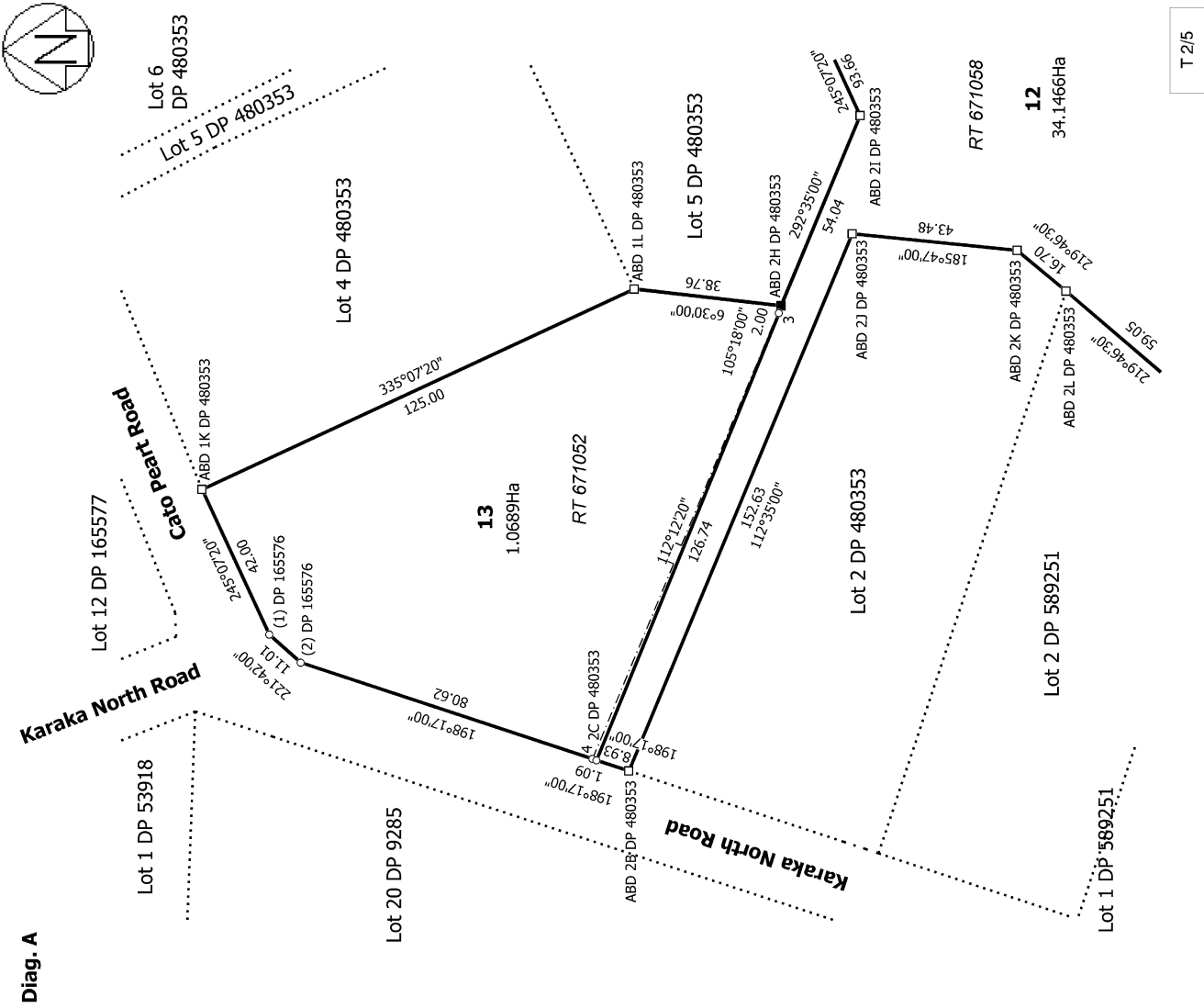
Lots 10,13,12 Being Subdivision of Lots 3,7,9 DP 480353

Land District: North Auckland  
 Digitally Generated Plan  
 Generated on: 08/11/2023 11:51:am Page 16 of 21

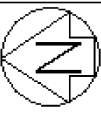




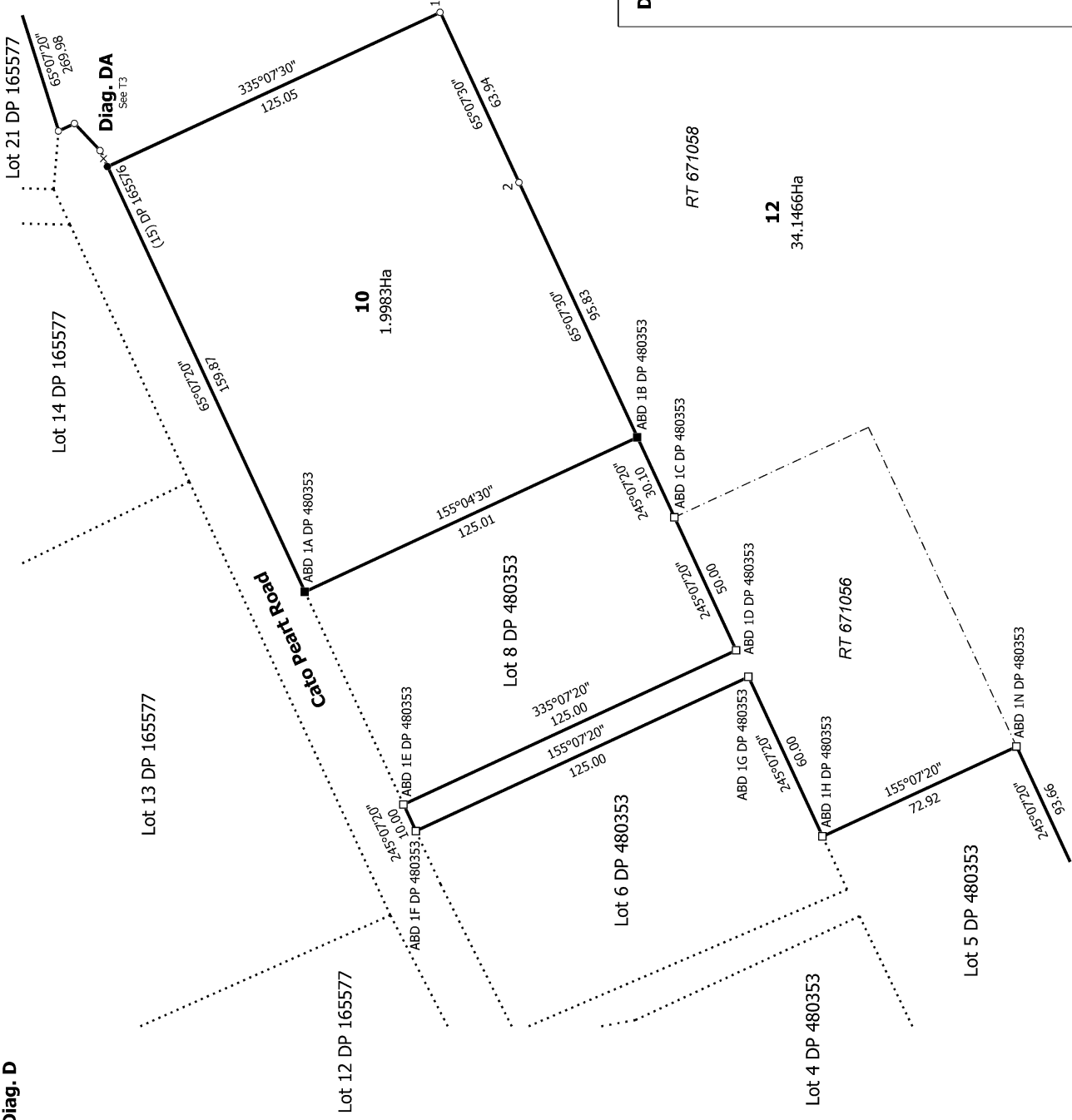
<p>Land District: North Auckland</p> <p><b>Digitally Generated Plan</b></p> <p>Generated on: 08/11/2023 11:51:am Page 17 of 21</p>	<p><b>Lots 10, 13, 12 Being Subdivision of Lots 3, 7, 9 DP 480353</b></p>	<p>Surveyor: David Alexander Lawrie</p> <p>Firm: Madsen Lawrie Surveyors Ltd</p> <p>Date of Survey: 12/06/2023</p>	<p>Record of Survey DP 592582</p> <p>Deposited on: 13/10/2023</p>
--	---	--	---



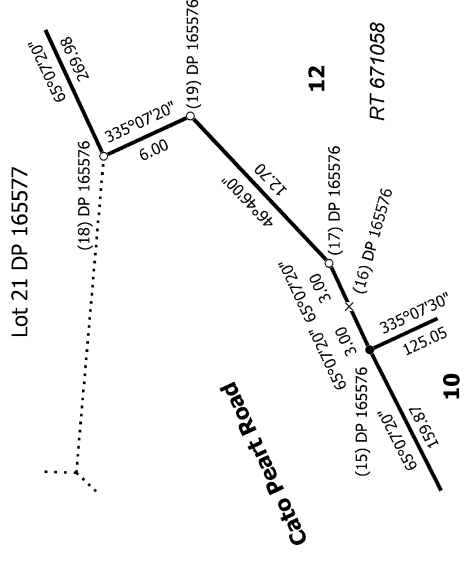
T 2/5	Record of Survey DP 592582	Deposited on: 13/10/2023
Surveyor: David Alexander Lawrie Firm: Madsen Lawrie Surveyors Ltd Date of Survey: 12/06/2023	Lots 10,13,12 Being Subdivision of Lots 3,7,9 DP 480353	
Land District: North Auckland		
Digitally Generated Plan Generated on: 08/11/2023 11:51:am Page 18 of 21		



Diag. D



Diag. DA



T 3/5

Land District: North Auckland

**Digitally Generated Plan**

Generated on: 08/11/2023 11:51:am Page 19 of 21

**Lots 10, 13, 12 Being Subdivision of Lots 3, 7, 9 DP 480353**

Surveyor: David Alexander Lawrie  
Firm: Madsen Lawrie Surveyors Ltd

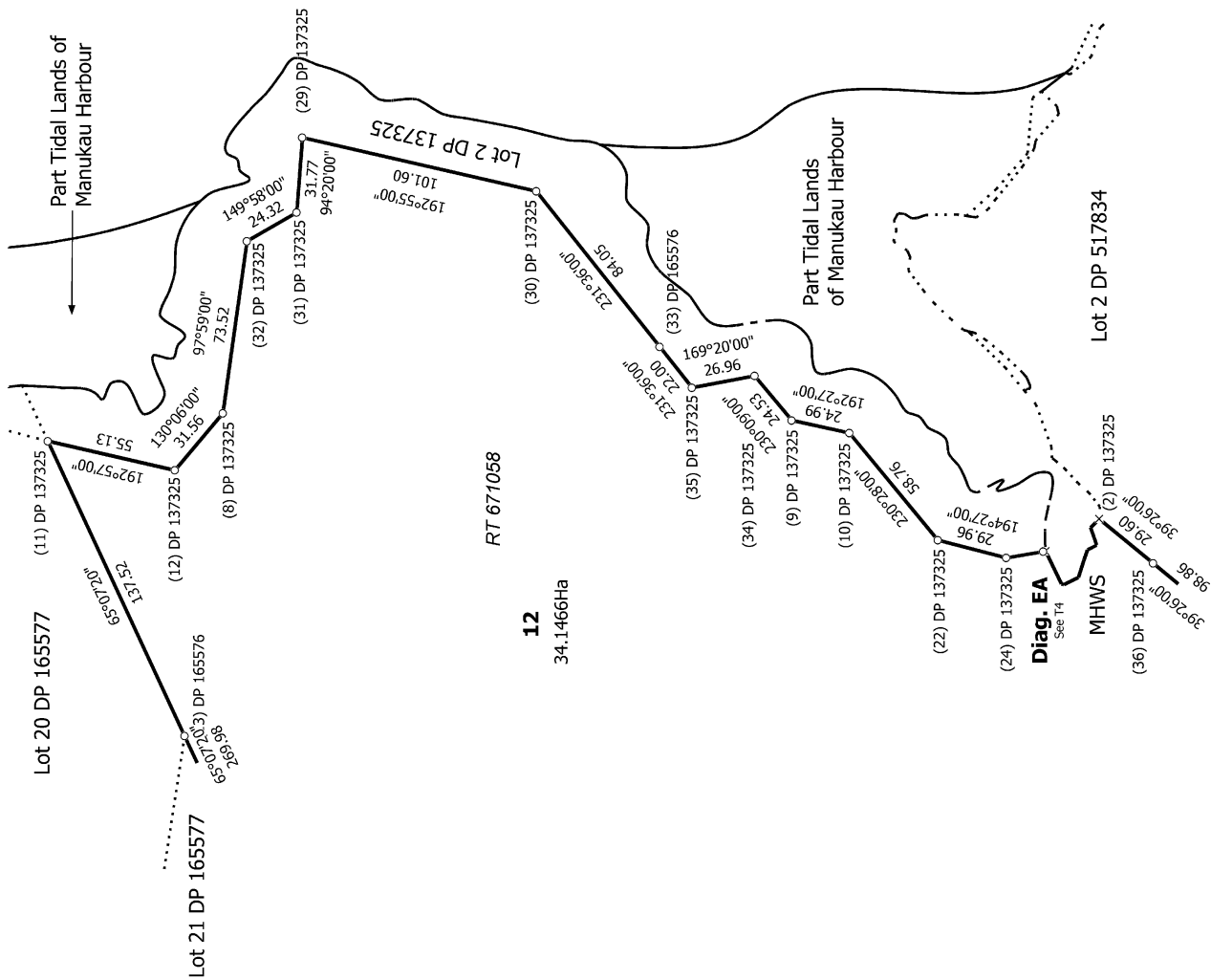
Date of Survey: 12/06/2023

Record of Survey  
DP 592582

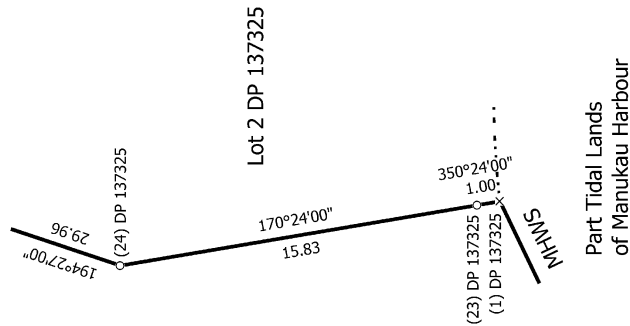
Deposited on: 13/10/2023



**Diag. E**



**Diag. EA**

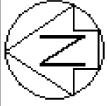


T 4/5

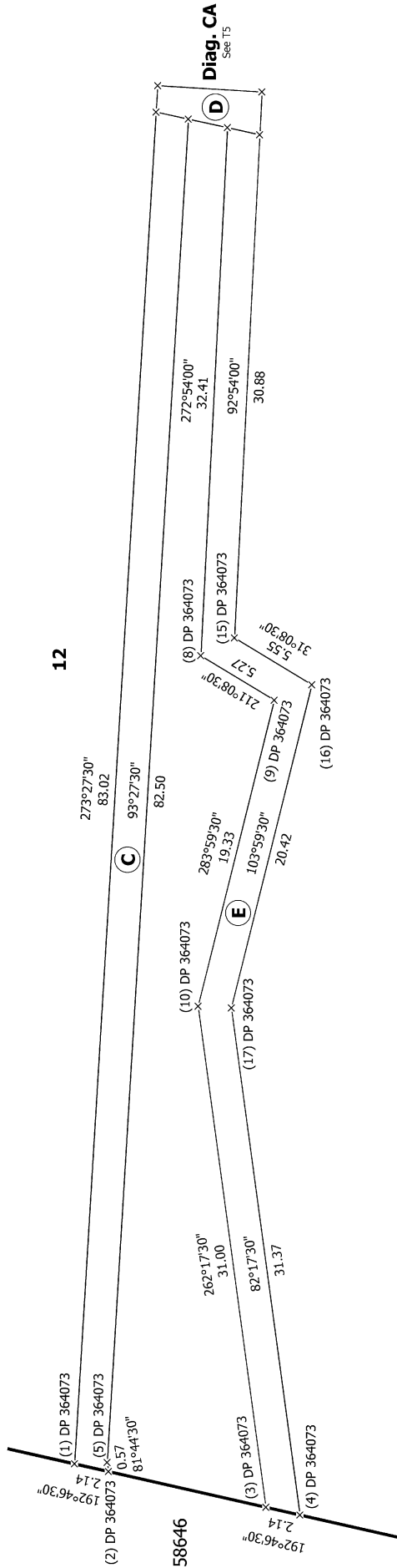
**Lots 10,13,12 Being Subdivision of Lots 3,7,9 DP 480353**

Surveyor: David Alexander Lawrie  
 Firm: Madsen Lawrie Surveyors Ltd  
 Date of Survey: 12/06/2023

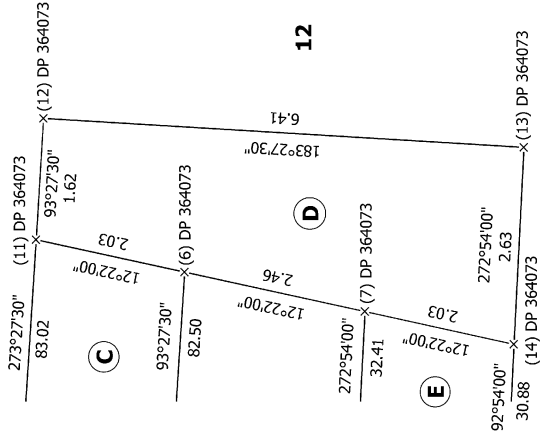
Record of Survey  
 DP 592582  
 Deposited on: 13/10/2023



Diag. C  
Non Primary



Diag. CA  
Non Primary



T 5/5

Land District: North Auckland

Digitally Generated Plan

Generated on: 08/11/2023 11:51:am | Page 21 of 21

Lots 10,13,12 Being Subdivision of Lots 3,7,9 DP 480353

Surveyor: David Alexander Lawrie  
Firm: Madsen Lawrie Surveyors Ltd  
Date of Survey: 12/06/2023

Record of Survey  
DP 592582

Deposited on: 13/10/2023