

# Record of Survey - DP 591957

<b>Survey Number</b>	DP 591957
<b>Surveyor Reference</b>	S190916 74 & 76 Chamberlain Rd
<b>Surveyor</b>	Simon John Conway
<b>Survey Firm</b>	Spencer Holmes Ltd
<b>Surveyor Declaration</b>	I Simon John Conway, being a licensed cadastral surveyor, certify that-- (a) this dataset provided by me and its related survey are accurate, correct and in accordance with the Cadastral Survey Act 2002 and Cadastral Survey Rules 2021; and (b) the survey was undertaken by me or under my personal direction. Declared on 13 Sep 2023 08:38 AM

## Survey Details

<b>Dataset Description</b>	Lots 1-2, Lots 4-19, Lots 21-33, HL Lot 3 & HL Lot 20 Being the Subdivision of Lots 1 & 3 DP 13659		
<b>Purpose</b>	LT Subdivision		
<b>Status</b>	Deposited	<b>Type</b>	Survey
<b>Land District</b>	Wellington	<b>Survey Class</b>	Class A
<b>Meridional Circuit</b>	Wellington 2000	<b>Vertical Datum</b>	New Zealand Vertical Datum 2016

## Survey Dates

<b>Surveyed Date</b>	25/05/2023	<b>Certified Date</b>	13/09/2023
<b>Submitted Date</b>	13/09/2023 08:38:23	<b>Survey Approval Date</b>	13/09/2023
<b>Deposit Date</b>	05/09/2023		

## Referenced Surveys

Survey Number	Land District	Bearing Correction
DP 13659	Wellington	0°00'00"
DP 1733	Wellington	0°00'00"
SO 19898	Wellington	0°00'00"
DP 16401	Wellington	0°00'00"
DP 369683	Wellington	0°00'00"

## Territorial Authorities

Wellington City

## Comprised In

RT WN523/229

RT WN523/230

## Created Parcels

Parcels	Parcel Intent	Area	RT Reference
Lot 1 Deposited Plan 591957	Fee Simple Title	0.0115 Ha	1135348
Lot 2 Deposited Plan 591957	Fee Simple Title	0.0063 Ha	1135349
Height-Limited Lot 3 Deposited Plan 591957	Fee Simple Title	0.0096 Ha	1135350
Lot 4 Deposited Plan 591957	Fee Simple Title	0.0096 Ha	1135351
Lot 5 Deposited Plan 591957	Fee Simple Title	0.0063 Ha	1135352

# Record of Survey - DP 591957

## Created Parcels

Parcels	Parcel Intent	Area	RT Reference
Lot 6 Deposited Plan 591957	Fee Simple Title	0.0063 Ha	1135353
Lot 7 Deposited Plan 591957	Fee Simple Title	0.0102 Ha	1135354
Lot 8 Deposited Plan 591957	Fee Simple Title	0.0105 Ha	1135355
Lot 9 Deposited Plan 591957	Fee Simple Title	0.0061 Ha	1135356
Lot 10 Deposited Plan 591957	Fee Simple Title	0.0061 Ha	1135357
Lot 11 Deposited Plan 591957	Fee Simple Title	0.0132 Ha	1135358
Lot 12 Deposited Plan 591957	Fee Simple Title	0.0123 Ha	1135359
Lot 13 Deposited Plan 591957	Fee Simple Title	0.0061 Ha	1135360
Lot 14 Deposited Plan 591957	Fee Simple Title	0.0061 Ha	1135361
Lot 15 Deposited Plan 591957	Fee Simple Title	0.0122 Ha	1135362
Lot 16 Deposited Plan 591957	Fee Simple Title	0.0096 Ha	1135363
Lot 17 Deposited Plan 591957	Fee Simple Title	0.0121 Ha	1135364
Lot 18 Deposited Plan 591957	Fee Simple Title	0.0012 Ha	Multiple
Lot 19 Deposited Plan 591957	Fee Simple Title	0.0045 Ha	Multiple
Height-Limited Lot 20 Deposited Plan 591957	Fee Simple Title	0.0303 Ha	Multiple
Lot 21 Deposited Plan 591957	Fee Simple Title	0.0012 Ha	1135349
Lot 22 Deposited Plan 591957	Fee Simple Title	0.0014 Ha	1135350
Lot 23 Deposited Plan 591957	Fee Simple Title	0.0014 Ha	1135351
Lot 24 Deposited Plan 591957	Fee Simple Title	0.0014 Ha	1135352
Lot 25 Deposited Plan 591957	Fee Simple Title	0.0014 Ha	1135353
Lot 26 Deposited Plan 591957	Fee Simple Title	0.0012 Ha	1135356
Lot 27 Deposited Plan 591957	Fee Simple Title	0.0013 Ha	1135357
Lot 28 Deposited Plan 591957	Fee Simple Title	0.0012 Ha	1135358
Lot 29 Deposited Plan 591957	Fee Simple Title	0.0015 Ha	1135360
Lot 30 Deposited Plan 591957	Fee Simple Title	0.0013 Ha	1135361
Lot 31 Deposited Plan 591957	Fee Simple Title	0.0013 Ha	1135362
Lot 32 Deposited Plan 591957	Fee Simple Title	0.0013 Ha	1135363
Lot 33 Deposited Plan 591957	Fee Simple Title	0.0017 Ha	1135364
Area A Deposited Plan 591957	Easement		
Area B Deposited Plan 591957	Easement		
Area C Deposited Plan 591957	Easement		
Area D Deposited Plan 591957	Easement		
Area E Deposited Plan 591957	Easement		
Area F Deposited Plan 591957	Easement		
Area G Deposited Plan 591957	Easement		
Area H Deposited Plan 591957	Easement		
Area I Deposited Plan 591957	Easement		
Area J Deposited Plan 591957	Easement		
Area K Deposited Plan 591957	Easement		
Area L Deposited Plan 591957	Easement		
Area M Deposited Plan 591957	Easement		
Area N Deposited Plan 591957	Easement		
Area O Deposited Plan 591957	Easement		
Area P Deposited Plan 591957	Easement		

# Record of Survey - DP 591957

---

## Created Parcels

Parcels	Parcel Intent	Area	RT Reference
Area Q Deposited Plan 591957	Easement		
Area R Deposited Plan 591957	Easement		
Area S Deposited Plan 591957	Easement		
Area T Deposited Plan 591957	Easement		
Area U Deposited Plan 591957	Easement		
Area V Deposited Plan 591957	Easement		
Area W Deposited Plan 591957	Easement		
Area X Deposited Plan 591957	Easement		
Area Y Deposited Plan 591957	Easement		
Area Z Deposited Plan 591957	Easement		
Area AA Deposited Plan 591957	Easement		
Area AB Deposited Plan 591957	Easement		
Area AC Deposited Plan 591957	Easement		
Area AD Deposited Plan 591957	Easement		
Area AE Deposited Plan 591957	Easement		
Area AF Deposited Plan 591957	Easement		
Area AG Deposited Plan 591957	Easement		
Area AH Deposited Plan 591957	Easement		
Area AI Deposited Plan 591957	Easement		
Area AJ Deposited Plan 591957	Easement		
Area AK Deposited Plan 591957	Easement		
Area AL Deposited Plan 591957	Easement		
Area AM Deposited Plan 591957	Easement		
Area AN Deposited Plan 591957	Easement		
Height-Limited Area AO Deposited Plan 591957	Easement		
Area AP Deposited Plan 591957	Easement		
Area AQ Deposited Plan 591957	Easement		
Area AR Deposited Plan 591957	Easement		
Area AS Deposited Plan 591957	Easement		
Area AT Deposited Plan 591957	Easement		
Area AU Deposited Plan 591957	Easement		
Area AV Deposited Plan 591957	Easement		
Area AW Deposited Plan 591957	Easement		
Area AX Deposited Plan 591957	Easement		
Area AY Deposited Plan 591957	Easement		
Area AZ Deposited Plan 591957	Easement		
Area BA Deposited Plan 591957	Easement		
Area BB Deposited Plan 591957	Easement		
Area BC Deposited Plan 591957	Easement		
Area BD Deposited Plan 591957	Easement		
Area BE Deposited Plan 591957	Easement		
Area BF Deposited Plan 591957	Easement		
Area BG Deposited Plan 591957	Easement		
Area BH Deposited Plan 591957	Easement		



# Record of Survey - DP 591957

---

## Created Parcels

Parcels	Parcel Intent	Area	RT Reference
Area BI Deposited Plan 591957	Easement		
Area BJ Deposited Plan 591957	Easement		
Area BK Deposited Plan 591957	Easement		
Area BL Deposited Plan 591957	Easement		
Area BM Deposited Plan 591957	Easement		
Area BN Deposited Plan 591957	Easement		
Height-Limited Area BO Deposited Plan 591957	Easement		
Height-Limited Area BP Deposited Plan 591957	Easement		
Area BQ Deposited Plan 591957	Easement		
Area BR Deposited Plan 591957	Easement		
Area BS Deposited Plan 591957	Easement		
Area BT Deposited Plan 591957	Easement		
Area BU Deposited Plan 591957	Easement		
Area BV Deposited Plan 591957	Easement		
Area BW Deposited Plan 591957	Easement		
<b>Total Area</b>		<hr/> 0.2077 Ha	

# Mark and Vector

Survey Number DP 591957

Meridional Circuit Wellington 2000

From	To	Code	Bearing	Adpt Surv	Bearing Correction	Distance	Adpt Surv	Class
LP I DP 23680	IS I DP 591957	ob166	159°10'19" M			39.23 M		
IS I DP 591957	IS III DP 12990	ob13	159°10'19" M			102.02 C		
IS III DP 12990	SS 1K12 SO 19898	ob127	159°10'19" M			43.01 A	DP 13659	
SS 1K12 SO 19898	IT I DP 471427	ob0	342°19'10" M			16.37 M		
IT I DP 471427	LP IV DP 318758	ob3	342°19'10" M			119.85 M		
LP IV DP 318758	SP XI DP 559233	ob6	341°08'30" M			67.00 M		
SP XI DP 559233	LP V DP 318758	ob9	341°08'30" M			6.55 M		
LP V DP 318758	LP I DP 23680	ob10	180°46'00" M			27.17 M		
LP IV DP 318758	IR VI DP 318758	ob7	151°21'30" M			8.72 M		
IR VI DP 318758	IT X DP 7375	ob5	151°21'30" M			62.57 M		
IT X DP 7375	SS 1K12 SO 19898	ob2	173°53'00" M			67.61 M		
LP IV DP 318758	LP I DP 23680	ob8	330°21'30" M			48.82 M		
LP V DP 318758	SS 1K12 SO 19898	ob11	161°54'15" M			209.77 M		
IS I DP 591957	IR VI DP 318758	ob14	133°03'00" M			19.66 M		
IS I DP 591957	LP IV DP 318758	ob15	119°28'00" M			11.71 M		
SS 1K12 SO 19898	IR VI DP 318758	ob1	343°03'30" M			127.67 M		
IT I DP 471427	SS 1K18 SO 19912	ob4	133°10'10" M			71.56 M		
SS 1K18 SO 19912	IR III DP 591957	ob23	295°59'20" M			167.74 M		
IR III DP 591957	IR IV DP 591957	ob27	338°05'00" M			5.37 M		
IR IV DP 591957	IR II DP 591957	ob28	338°05'00" M			16.21 M		
IR II DP 591957	IS I DP 591957	ob17	38°31'50" M			96.38 M		
IR II DP 591957	IR VII DP 591957	ob18	248°29'10" M			28.97 M		
IR VII DP 591957	IR VI DP 591957	ob50	248°29'10" M			22.00 M		
IR VI DP 591957	IT (1) DP 13659	ob45	248°29'10" M			17.70 M		
IT (1) DP 13659	IR X DP 591957	ob42	155°39'00" M			15.41 M		
IR X DP 591957	SPS XI DP 591957	ob57	69°10'30" M			17.23 M		
SPS XI DP 591957	SPS XII DP 591957	ob59	69°10'30" M			22.56 M		
SPS XII DP 591957	SPS XIII DP 591957	ob80	69°10'30" M			13.59 M		

# Mark and Vector

Survey Number DP 591957

Meridional Circuit Wellington 2000

From	To	Code	Bearing	Adpt Surv	Bearing Correction	Distance	Adpt Surv	Class
SPS XIII DP 591957	IR IV DP 591957	ob107	69°10'30"	M		14.65 M		
SPS XII DP 591957	SPS XV DP 591957	ob81	155°25'30"	M		4.23 M		
SPS XV DP 591957	IR VIII DP 591957	ob128	155°25'30"	M		17.75 M		
IR VIII DP 591957	IR IX DP 591957	ob55	66°00'00"	M		14.68 M		
IR IX DP 591957	IR V DP 591957	ob56	66°00'00"	M		12.56 M		
IR V DP 591957	IR III DP 591957	ob33	338°05'00"	M		15.06 M		
SPS XIII DP 591957	SPS XIV DP 591957	ob108	152°27'00"	M		9.76 M		
SPS XIV DP 591957	IR IX DP 591957	ob126	152°27'00"	M		11.51 M		
IR VII DP 591957	SPS XII DP 591957	ob51	155°25'30"	M		15.89 M		
SPS XI DP 591957	IR VI DP 591957	ob60	337°25'00"	M		15.60 M		
IR X DP 591957	IS II DP 508518	ob58	190°43'00"	M		22.69 M		
IS II DP 508518	IT (1) DP 13659	ob129	356°38'30"	M		36.40 M		
IS II DP 508518	IS II DP 369683	ob130	161°07'40"	M		32.11 M		
IS II DP 369683	IS 3 SO 511716	ob131	185°24'00"	M		33.59 M		
IS 3 SO 511716	NAIL 2 SO 511716	ob132	210°37'00"	M		33.31 M		
NAIL 2 SO 511716	BP 1 SO 511716	ob133	154°47'00"	M		60.76 M		
BP 1 SO 511716	SSP II DP 524260	ob134	85°25'35"	M		229.40 M		
SSP II DP 524260	SS 1K18 SO 19912	ob25	346°00'00"	M		100.13 M		
IS I DP 591957	LP V DP 318758	ob16	347°59'00"	M		65.27 M		
SSP II DP 524260	LP V DP 318758	ob26	337°30'25"	M		357.08 M		
LP V DP 318758	BP 1 SO 511716	ob12	194°48'35"	M		360.17 M		
SS 1K18 SO 19912	SS 1K12 SO 19898	ob24	305°13'57"	A	SO 19898	57.84 A	SO 19898	
IT (1) DP 13659	IB V DP 16401	ob43	195°43'00"	A	DP 16401	55.78 A	DP 16401	
IB V DP 16401	IT X DP 16401	ob135	221°27'10"	A	DP 16401	65.93 A	DP 16401	
IT X DP 16401	IS I DP 369683	ob137	89°06'15"	A	DP 369683	65.29 A	DP 369683	
IS I DP 369683	IS II DP 369683	ob138	9°36'50"	A	DP 369683	35.90 A	DP 369683	
IB V DP 16401	PEG (2) DP 1733	ob136	145°26'00"	A	DP 16401	30.80 A	DP 16401	
PEG (2) DP 1733	PEG (3) DP 1733	ob139	92°53'30"	A	DP 1733	10.60 A	DP 1733	
PEG (3) DP 1733	PEG (4) DP 1733	ob140	92°53'30"	A	DP 1733	10.60 A	DP 1733	
PEG (4) DP 1733	IT (5) DP 13659	ob141	344°35'15"	A	DP 13659	3.21 A	DP 13659	
IT (5) DP 13659	PEG (6) DP 13659	ob142	344°35'15"	A	DP 13659	3.84 A	DP 13659	

# Mark and Vector

Survey Number DP 591957

Meridional Circuit Wellington 2000

From	To	Code	Bearing	Adpt Surv	Bearing Correction	Distance	Adpt Surv	Class
PEG (6) DP 13659	PEG (7) DP 13659	ob143	344°35'15"	A DP 13659	0°00'00"	15.24 A	DP 13659	
PEG (7) DP 13659	PEG (8) DP 1733	ob144	344°35'15"	A DP 13659	0°00'00"	1.65 A	DP 13659	
PEG (8) DP 1733	PEG (9) DP 1733	ob145	344°35'15"	A DP 13659	0°00'00"	20.20 A	DP 13659	
PEG (9) DP 1733	PEG (10) DP 13659	ob146	344°35'15"	A DP 13659	0°00'00"	18.71 A	DP 13659	
PEG (10) DP 13659	PEG (11) DP 1733	ob147	344°35'15"	A DP 13659	0°00'00"	1.53 A	DP 13659	Class A
PEG (11) DP 1733	PEG (12) DP 13659	ob148	344°35'15"	A DP 13659	0°00'00"	1.53 A	DP 13659	Class A
PEG (12) DP 13659	DISK 33 DP 591957	ob150	344°35'15"	A DP 13659	0°00'00"	3.29 C		Class A
DISK 33 DP 591957	UNMK 97 DP 591957	ob215	344°35'15"	A DP 13659	0°00'00"	0.61 C		Class A
UNMK 97 DP 591957	PEG 230 DP 591957	ob300	344°35'15"	A DP 13659	0°00'00"	12.28 C		Class A
PEG 230 DP 591957	IT (1) DP 13659	ob151	300°05'00"	M		2.01 M		Class A
PEG (11) DP 1733	IT I DP 13659	ob149	96°22'30"	A DP 13659	0°00'00"	77.56 A	DP 13659	
IT I DP 13659	IS III DP 12990	ob152	67°25'30"	A DP 13659	0°00'00"	83.05 A	DP 13659	
IT I DP 13659	PEG III DP 13659	ob153	331°51'45"	A DP 13659	0°00'00"	38.36 A	DP 13659	
PEG III DP 13659	PEG (11) DP 1733	ob155	246°51'45"	A DP 13659	0°00'00"	64.15 A	DP 13659	
PEG III DP 13659	PEG (14) DP 13659	ob156	359°49'00"	A DP 13659	0°00'00"	19.59 A	DP 13659	
PEG (14) DP 13659	PEG 5 DP 591957	ob157	248°35'40"	A DP 13659	0°00'00"	8.38 C		Class A
PEG 5 DP 591957	PEG 4 DP 591957	ob174	248°35'40"	A DP 13659	0°00'00"	4.11 C		Class A
PEG 4 DP 591957	DISK 3 DP 591957	ob172	248°35'40"	A DP 13659	0°00'00"	4.09 C		Class A
DISK 3 DP 591957	DISK 2 DP 591957	ob170	248°35'40"	A DP 13659	0°00'00"	7.58 C		Class A
DISK 2 DP 591957	PEG (15) DP 13659	ob169	248°35'40"	A DP 13659	0°00'00"	5.82 C		Class A
PEG (15) DP 13659	PEG 1 DP 591957	ob159	248°35'40"	A DP 13659	0°00'00"	0.57 C		Class A
PEG 1 DP 591957	UNMK 85 DP 591957	ob167	248°35'40"	A DP 13659	0°00'00"	6.01 C		Class A
UNMK 85 DP 591957	PEG 7 DP 591957	ob288	248°35'40"	A DP 13659	0°00'00"	0.20 C		Class A
PEG 7 DP 591957	UNMK 86 DP 591957	ob177	248°35'40"	A DP 13659	0°00'00"	0.20 C		Class A
UNMK 86 DP 591957	UNMK 87 DP 591957	ob289	248°35'40"	A DP 13659	0°00'00"	3.70 C		Class A

# Mark and Vector

Survey Number DP 591957

Meridional Circuit Wellington 2000

From	To	Code	Bearing	Adpt Surv	Bearing Correction	Distance	Adpt Surv	Class
UNMK 87 DP 591957	PEG 8 DP 591957	ob290	248°35'40"	A DP 13659	0°00'00"	0.20 C		Class A
PEG 8 DP 591957	UNMK 88 DP 591957	ob179	248°35'40"	A DP 13659	0°00'00"	0.20 C		Class A
UNMK 88 DP 591957	UNMK 89 DP 591957	ob291	248°35'40"	A DP 13659	0°00'00"	3.70 C		Class A
UNMK 89 DP 591957	PEG 9 DP 591957	ob292	248°35'40"	A DP 13659	0°00'00"	0.20 C		Class A
PEG 9 DP 591957	UNMK 90 DP 591957	ob181	248°35'40"	A DP 13659	0°00'00"	0.20 C		Class A
UNMK 90 DP 591957	UNMK 91 DP 591957	ob293	248°35'40"	A DP 13659	0°00'00"	6.42 C		Class A
UNMK 91 DP 591957	PEG 10 DP 591957	ob294	248°35'40"	A DP 13659	0°00'00"	0.20 C		Class A
PEG 10 DP 591957	UNMK 92 DP 591957	ob183	248°35'40"	A DP 13659	0°00'00"	0.20 C		Class A
UNMK 92 DP 591957	UNMK 93 DP 591957	ob295	248°35'40"	A DP 13659	0°00'00"	6.36 C		Class A
UNMK 93 DP 591957	PEG 11 DP 591957	ob296	248°35'40"	A DP 13659	0°00'00"	0.20 C		Class A
PEG 11 DP 591957	UNMK 94 DP 591957	ob185	248°35'40"	A DP 13659	0°00'00"	0.20 C		Class A
UNMK 94 DP 591957	UNMK 95 DP 591957	ob297	248°35'40"	A DP 13659	0°00'00"	3.70 C		Class A
UNMK 95 DP 591957	PEG 12 DP 591957	ob298	248°35'40"	A DP 13659	0°00'00"	0.20 C		Class A
PEG 12 DP 591957	UNMK 96 DP 591957	ob187	248°35'40"	A DP 13659	0°00'00"	0.20 C		Class A
UNMK 96 DP 591957	PEG (16) DP 1733	ob299	248°35'40"	A DP 13659	0°00'00"	8.59 C		Class A
PEG (16) DP 1733	IT (1) DP 13659	ob160	120°05'00"	A DP 13659	0°00'00"	1.30 A DP 13659		Class A
IT I DP 13659	PEG (17) DP 1022	ob154	346°33'00"	A DP 13659	0°00'00"	16.25 A DP 13659		
PEG (17) DP 1022	DISK 22 DP 591957	ob161	248°30'30"	A DP 13659	0°00'00"	12.59 C		Class A
DISK 22 DP 591957	DISK 23 DP 591957	ob200	248°30'30"	A DP 13659	0°00'00"	4.67 C		Class A
DISK 23 DP 591957	PEG (18) DP 13659	ob201	248°30'30"	A DP 13659	0°00'00"	12.32 C		Class A
PEG (18) DP 13659	PEG 24 DP 591957	ob162	338°31'20"	A DP 13659	0°00'00"	8.60 C		Class A
PEG 24 DP 591957	DISK 25 DP 591957	ob203	338°31'20"	A DP 13659	0°00'00"	6.50 C		Class A
DISK 25 DP 591957	PEG (19) DP 13659	ob205	338°31'20"	A DP 13659	0°00'00"	3.51 C		Class A
PEG (19) DP 13659	DISK 26 DP 591957	ob163	248°33'00"	A DP 13659	0°00'00"	2.30 C		Class A



# Mark and Vector

Survey Number DP 591957

Meridional Circuit Wellington 2000

From	To	Code	Bearing	Adpt Surv	Bearing Correction	Distance	Adpt Surv	Class
DISK 26 DP 591957	PEG 27 DP 591957	ob207	248°33'00"	A DP 13659	0°00'00"	5.00 C		Class A
PEG 27 DP 591957	DISK 28 DP 591957	ob208	248°33'00"	A DP 13659	0°00'00"	5.90 C		Class A
DISK 28 DP 591957	IS 29 DP 591957	ob209	248°33'00"	A DP 13659	0°00'00"	5.90 C		Class A
IS 29 DP 591957	DISK 30 DP 591957	ob210	248°33'00"	A DP 13659	0°00'00"	5.90 C		Class A
DISK 30 DP 591957	DISK 31 DP 591957	ob211	248°33'00"	A DP 13659	0°00'00"	5.90 C		Class A
DISK 31 DP 591957	IS 32 DP 591957	ob212	248°33'00"	A DP 13659	0°00'00"	5.00 C		Class A
IS 32 DP 591957	PEG (10) DP 13659	ob213	248°33'00"	A DP 13659	0°00'00"	5.53 C		Class A
PEG (14) DP 13659	PEG 6 DP 591957	ob158	159°03'00"	A DP 13659	0°00'00"	14.53 C		Class A
PEG 6 DP 591957	PEG (20) DP 1022	ob176	159°03'00"	A DP 13659	0°00'00"	5.62 C		Class A
PEG (20) DP 1022	PEG 17 DP 591957	ob165	159°07'00"	A DP 13659	0°00'00"	3.35 C		Class A
PEG 17 DP 591957	DISK 16 DP 591957	ob193	159°07'00"	A DP 13659	0°00'00"	4.10 C		Class A
DISK 16 DP 591957	DISK 18 DP 591957	ob192	159°07'00"	A DP 13659	0°00'00"	4.10 C		Class A
DISK 18 DP 591957	PEG (17) DP 1022	ob194	159°07'00"	A DP 13659	0°00'00"	8.56 C		Class A
IS 32 DP 591957	DISK 34 DP 591957	ob214	338°33'00"	C		2.45 C		Class A
DISK 34 DP 591957	DISK 35 DP 591957	ob217	68°33'00"	C		5.00 C		Class A
DISK 35 DP 591957	DISK 36 DP 591957	ob218	68°33'00"	C		5.90 C		Class A
DISK 36 DP 591957	DISK 37 DP 591957	ob220	68°33'00"	C		5.90 C		Class A
DISK 37 DP 591957	DISK 38 DP 591957	ob222	68°33'00"	C		5.90 C		Class A
DISK 38 DP 591957	DISK 39 DP 591957	ob224	68°33'00"	C		5.90 C		Class A
DISK 39 DP 591957	DISK 40 DP 591957	ob226	68°33'00"	C		5.00 C		Class A
DISK 40 DP 591957	DISK 26 DP 591957	ob228	158°33'00"	C		2.45 C		Class A
DISK 35 DP 591957	DISK 31 DP 591957	ob219	158°33'00"	C		2.45 C		Class A
DISK 36 DP 591957	DISK 30 DP 591957	ob221	158°33'00"	C		2.45 C		Class A
DISK 37 DP 591957	IS 29 DP 591957	ob223	158°33'00"	C		2.45 C		Class A

# Mark and Vector

Survey Number DP 591957

Meridional Circuit Wellington 2000

From	To	Code	Bearing	Adpt Surv	Bearing Correction	Distance	Adpt Surv	Class
DISK 38 DP 591957	DISK 28 DP 591957	ob225	158°33'00"	C		2.45 C		Class A
DISK 39 DP 591957	PEG 27 DP 591957	ob227	158°33'00"	C		2.45 C		Class A
DISK 33 DP 591957	DISK 41 DP 591957	ob216	68°33'00"	C		8.08 C		Class A
DISK 41 DP 591957	DISK 42 DP 591957	ob229	68°33'00"	C		4.10 C		Class A
DISK 42 DP 591957	DISK 43 DP 591957	ob230	68°33'00"	C		4.99 C		Class A
DISK 43 DP 591957	UNMK 98 DP 591957	ob231	338°33'00"	C		0.15 C		Class A
UNMK 98 DP 591957	DISK 44 DP 591957	ob302	338°33'00"	C		5.79 C		Class A
DISK 44 DP 591957	DISK 45 DP 591957	ob232	68°33'00"	C		1.77 C		Class A
DISK 45 DP 591957	DISK 46 DP 591957	ob233	68°33'00"	C		1.49 C		Class A
DISK 46 DP 591957	UNMK 99 DP 591957	ob234	158°33'00"	C		5.82 C		Class A
UNMK 99 DP 591957	DISK 47 DP 591957	ob303	158°33'00"	C		0.15 C		Class A
DISK 47 DP 591957	DISK 48 DP 591957	ob235	68°33'00"	C		5.33 C		Class A
DISK 48 DP 591957	DISK 49 DP 591957	ob236	68°33'00"	C		4.10 C		Class A
DISK 49 DP 591957	DISK 50 DP 591957	ob237	68°33'00"	C		4.10 C		Class A
DISK 50 DP 591957	UNMK 100 DP 591957	ob238	68°33'00"	C		5.22 C		Class A
UNMK 100 DP 591957	DISK 51 DP 591957	ob305	68°33'00"	C		0.99 C		Class A
DISK 51 DP 591957	DISK 52 DP 591957	ob239	338°33'00"	C		2.50 C		Class A
DISK 52 DP 591957	DISK 53 DP 591957	ob240	68°33'00"	C		1.31 C		Class A
DISK 53 DP 591957	UNMK 101 DP 591957	ob241	68°33'00"	C		2.16 C		Class A
UNMK 101 DP 591957	DISK 54 DP 591957	ob306	68°33'00"	C		0.50 C		Class A
DISK 54 DP 591957	DISK 55 DP 591957	ob243	338°33'00"	C		2.84 C		Class A
DISK 55 DP 591957	UNMK 102 DP 591957	ob244	68°33'00"	C		0.50 C		Class A
UNMK 102 DP 591957	DISK 56 DP 591957	ob307	68°33'00"	C		1.97 C		Class A
DISK 56 DP 591957	DISK 57 DP 591957	ob247	68°33'00"	C		1.28 C		Class A

# Mark and Vector

Survey Number DP 591957

Meridional Circuit Wellington 2000

From	To	Code	Bearing	Adpt Surv	Bearing Correction	Distance	Adpt Surv	Class
DISK 57 DP 591957	DISK 58 DP 591957	ob248	158°33'00"	C		4.75 C		Class A
DISK 58 DP 591957	UNMK 104 DP 591957	ob249	68°33'00"	C		6.05 C		Class A
UNMK 104 DP 591957	DISK 59 DP 591957	ob309	68°33'00"	C		0.20 C		Class A
DISK 59 DP 591957	DISK 60 DP 591957	ob250	68°33'00"	C		1.17 C		Class A
DISK 60 DP 591957	DISK 61 DP 591957	ob251	68°33'00"	C		2.92 C		Class A
DISK 61 DP 591957	UNMK 105 DP 591957	ob252	68°33'00"	C		2.69 C		Class A
UNMK 105 DP 591957	PEG 15 DP 591957	ob311	68°33'00"	C		1.42 C		Class A
PEG 15 DP 591957	DISK 62 DP 591957	ob191	158°33'00"	C		1.56 C		Class A
DISK 62 DP 591957	UNMK 106 DP 591957	ob253	68°33'00"	C		4.01 C		Class A
UNMK 106 DP 591957	PEG 14 DP 591957	ob313	68°33'00"	C		1.88 C		Class A
PEG 14 DP 591957	DISK 13 DP 591957	ob190	338°33'00"	C		1.83 C		Class A
DISK 13 DP 591957	PEG 6 DP 591957	ob189	68°33'00"	C		2.36 C		Class A
PEG 12 DP 591957	UNMK 107 DP 591957	ob188	158°33'00"	C		3.59 C		Class A
UNMK 107 DP 591957	UNMK 108 DP 591957	ob315	158°33'00"	C		10.81 C		Class A
UNMK 108 DP 591957	UNMK 109 DP 591957	ob317	158°33'00"	C		0.85 C		Class A
UNMK 109 DP 591957	DISK 41 DP 591957	ob320	158°33'00"	C		0.15 C		Class A
PEG 11 DP 591957	UNMK 110 DP 591957	ob186	158°33'00"	C		3.58 C		Class A
UNMK 110 DP 591957	UNMK 111 DP 591957	ob322	158°33'00"	C		10.81 C		Class A
UNMK 111 DP 591957	UNMK 112 DP 591957	ob324	158°33'00"	C		0.85 C		Class A
UNMK 112 DP 591957	DISK 42 DP 591957	ob327	158°33'00"	C		0.15 C		Class A
PEG 10 DP 591957	UNMK 113 DP 591957	ob184	158°33'00"	C		4.36 C		Class A
UNMK 113 DP 591957	DISK 45 DP 591957	ob329	158°33'00"	C		5.09 C		Class A
PEG 9 DP 591957	UNMK 114 DP 591957	ob182	158°33'00"	C		3.58 C		Class A
UNMK 114 DP 591957	UNMK 115 DP 591957	ob332	158°33'00"	C		10.84 C		Class A

# Mark and Vector

Survey Number DP 591957

Meridional Circuit Wellington 2000

From	To	Code	Bearing	Adpt Surv	Bearing Correction	Distance	Adpt Surv	Class
UNMK 115 DP 591957	UNMK 116 DP 591957	ob334	158°33'00"	C		0.85 C		Class A
UNMK 116 DP 591957	DISK 48 DP 591957	ob337	158°33'00"	C		0.15 C		Class A
PEG 8 DP 591957	UNMK 117 DP 591957	ob180	158°33'00"	C		3.97 C		Class A
UNMK 117 DP 591957	UNMK 118 DP 591957	ob338	158°33'00"	C		10.44 C		Class A
UNMK 118 DP 591957	DISK 49 DP 591957	ob340	158°33'00"	C		1.00 C		Class A
PEG 7 DP 591957	UNMK 119 DP 591957	ob178	158°33'00"	C		3.57 C		Class A
UNMK 119 DP 591957	UNMK 120 DP 591957	ob343	158°33'00"	C		10.84 C		Class A
UNMK 120 DP 591957	DISK 50 DP 591957	ob345	158°33'00"	C		1.00 C		Class A
PEG 1 DP 591957	UNMK 121 DP 591957	ob168	158°33'00"	C		1.07 C		Class A
UNMK 121 DP 591957	DISK 63 DP 591957	ob348	158°33'00"	C		6.92 C		Class A
DISK 63 DP 591957	DISK 64 DP 591957	ob254	68°02'00"	C		1.31 C		Class A
DISK 64 DP 591957	DISK 53 DP 591957	ob255	158°33'00"	C		4.92 C		Class A
DISK 64 DP 591957	UNMK 122 DP 591957	ob256	68°02'00"	C		2.16 C		Class A
UNMK 122 DP 591957	DISK 65 DP 591957	ob349	68°02'00"	C		0.50 C		Class A
DISK 65 DP 591957	DISK 66 DP 591957	ob257	338°33'00"	C		2.59 C		Class A
DISK 66 DP 591957	UNMK 123 DP 591957	ob258	65°35'00"	C		0.50 C		Class A
UNMK 123 DP 591957	DISK 67 DP 591957	ob351	65°35'00"	C		1.98 C		Class A
DISK 67 DP 591957	DISK 2 DP 591957	ob259	337°55'00"	C		5.23 C		Class A
DISK 55 DP 591957	DISK 65 DP 591957	ob245	338°33'00"	C		2.11 C		Class A
DISK 67 DP 591957	DISK 56 DP 591957	ob260	158°33'00"	C		4.83 C		Class A
DISK 3 DP 591957	UNMK 124 DP 591957	ob171	158°33'00"	C		3.14 C		Class A
UNMK 124 DP 591957	UNMK 125 DP 591957	ob353	158°33'00"	C		10.81 C		Class A
UNMK 125 DP 591957	DISK 59 DP 591957	ob355	158°33'00"	C		0.86 C		Class A
PEG 4 DP 591957	UNMK 126 DP 591957	ob173	158°33'00"	C		3.54 C		Class A

# Mark and Vector

Survey Number DP 591957

Meridional Circuit Wellington 2000

From	To	Code	Bearing	Adpt Surv	Bearing Correction	Distance	Adpt Surv	Class
UNMK 126 DP 591957	UNMK 127 DP 591957	ob357	158°33'00"	C		10.27 C		Class A
UNMK 127 DP 591957	DISK 61 DP 591957	ob358	158°33'00"	C		1.00 C		Class A
PEG 5 DP 591957	UNMK 128 DP 591957	ob175	158°33'00"	C		3.13 C		Class A
UNMK 128 DP 591957	UNMK 129 DP 591957	ob361	158°33'00"	C		10.86 C		Class A
UNMK 129 DP 591957	PEG 15 DP 591957	ob363	158°33'00"	C		0.81 C		Class A
DISK 23 DP 591957	PEG 20 DP 591957	ob202	338°33'00"	C		2.58 C		Class A
PEG 20 DP 591957	PEG 21 DP 591957	ob196	68°33'00"	C		2.47 C		Class A
PEG 21 DP 591957	PEG 19 DP 591957	ob198	68°33'00"	C		2.20 C		Class A
PEG 19 DP 591957	DISK 22 DP 591957	ob195	158°33'00"	C		2.58 C		Class A
PEG 21 DP 591957	UNMK 130 DP 591957	ob199	338°33'00"	C		1.09 C		Class A
UNMK 130 DP 591957	DISK 68 DP 591957	ob365	338°33'00"	C		4.92 C		Class A
DISK 68 DP 591957	DISK 69 DP 591957	ob261	338°33'00"	C		4.09 C		Class A
DISK 69 DP 591957	DISK 70 DP 591957	ob263	338°33'00"	C		2.40 C		Class A
DISK 70 DP 591957	DISK 71 DP 591957	ob265	338°33'00"	C		1.69 C		Class A
DISK 71 DP 591957	DISK 72 DP 591957	ob266	338°33'00"	C		4.84 C		Class A
DISK 72 DP 591957	DISK 73 DP 591957	ob268	328°30'00"	C		1.38 C		Class A
DISK 73 DP 591957	DISK 60 DP 591957	ob270	338°33'00"	C		2.50 C		Class A
DISK 25 DP 591957	UNMK 131 DP 591957	ob206	68°33'00"	C		2.68 C		Class A
UNMK 131 DP 591957	DISK 74 DP 591957	ob367	68°33'00"	C		0.94 C		Class A
DISK 74 DP 591957	DISK 75 DP 591957	ob272	68°33'00"	C		2.44 C		Class A
DISK 75 DP 591957	DISK 76 DP 591957	ob273	68°33'00"	C		2.44 C		Class A
DISK 76 DP 591957	DISK 77 DP 591957	ob274	68°33'00"	C		2.44 C		Class A
DISK 77 DP 591957	DISK 78 DP 591957	ob275	68°33'00"	C		2.82 C		Class A
DISK 78 DP 591957	DISK 70 DP 591957	ob276	68°33'00"	C		1.03 C		Class A

# Mark and Vector

Survey Number DP 591957

Meridional Circuit Wellington 2000

From	To	Code	Bearing	Adpt Surv	Bearing Correction	Distance	Adpt Surv	Class
PEG (19) DP 13659	DISK 79 DP 591957	ob164	333°05'00"	C		2.01 C		Class A
DISK 79 DP 591957	DISK 80 DP 591957	ob278	69°22'00"	C		2.82 C		Class A
DISK 80 DP 591957	DISK 81 DP 591957	ob279	69°22'00"	C		2.45 C		Class A
DISK 81 DP 591957	DISK 82 DP 591957	ob281	69°22'00"	C		2.45 C		Class A
DISK 82 DP 591957	DISK 83 DP 591957	ob283	69°22'00"	C		2.45 C		Class A
DISK 83 DP 591957	DISK 84 DP 591957	ob285	69°22'00"	C		2.83 C		Class A
DISK 84 DP 591957	DISK 78 DP 591957	ob287	148°14'00"	C		5.41 C		Class A
DISK 80 DP 591957	DISK 74 DP 591957	ob280	148°14'00"	C		5.56 C		Class A
DISK 81 DP 591957	DISK 75 DP 591957	ob282	148°14'00"	C		5.52 C		Class A
DISK 82 DP 591957	DISK 76 DP 591957	ob284	148°14'00"	C		5.49 C		Class A
DISK 83 DP 591957	DISK 77 DP 591957	ob286	148°14'00"	C		5.45 C		Class A
PEG 24 DP 591957	UNMK 132 DP 591957	ob204	68°33'00"	C		2.68 C		Class A
UNMK 132 DP 591957	UNMK 133 DP 591957	ob368	68°33'00"	C		10.85 C		Class A
UNMK 133 DP 591957	UNMK 134 DP 591957	ob370	68°33'00"	C		0.24 C		Class A
UNMK 134 DP 591957	DISK 68 DP 591957	ob372	68°33'00"	C		1.02 C		Class A
DISK 68 DP 591957	UNMK 135 DP 591957	ob262	68°33'00"	C		0.68 C		Class A
UNMK 135 DP 591957	UNMK 136 DP 591957	ob374	68°33'00"	C		0.34 C		Class A
UNMK 136 DP 591957	UNMK 137 DP 591957	ob376	68°33'00"	C		10.86 C		Class A
UNMK 137 DP 591957	DISK 18 DP 591957	ob378	68°33'00"	C		2.99 C		Class A
DISK 69 DP 591957	UNMK 138 DP 591957	ob264	68°33'00"	C		0.68 C		Class A
UNMK 138 DP 591957	UNMK 139 DP 591957	ob380	68°33'00"	C		0.52 C		Class A
UNMK 139 DP 591957	UNMK 140 DP 591957	ob382	68°33'00"	C		10.26 C		Class A
UNMK 140 DP 591957	DISK 16 DP 591957	ob384	68°33'00"	C		3.46 C		Class A
DISK 71 DP 591957	UNMK 141 DP 591957	ob267	68°33'00"	C		0.68 C		Class A

# Mark and Vector

Survey Number DP 591957

Meridional Circuit Wellington 2000

From	To	Code	Bearing	Adpt Surv	Bearing Correction	Distance	Adpt Surv	Class
UNMK 141 DP 591957	UNMK 142 DP 591957	ob386	68°33'00"	C		0.34 C		Class A
UNMK 142 DP 591957	UNMK 143 DP 591957	ob388	68°33'00"	C		10.83 C		Class A
UNMK 143 DP 591957	PEG 17 DP 591957	ob390	68°33'00"	C		3.11 C		Class A
UNMK 97 DP 591957	UNMK 144 DP 591957	ob301	68°33'00"	C		5.65 C		Class A
UNMK 144 DP 591957	UNMK 145 DP 591957	ob392	158°33'00"	C		0.46 C		Class A
UNMK 145 DP 591957	UNMK 109 DP 591957	ob393	68°33'00"	C		2.37 C		Class A
UNMK 109 DP 591957	UNMK 112 DP 591957	ob321	68°33'00"	C		4.10 C		Class A
UNMK 112 DP 591957	UNMK 98 DP 591957	ob328	68°33'00"	C		4.99 C		Class A
UNMK 108 DP 591957	UNMK 146 DP 591957	ob318	248°33'00"	C		0.20 C		Class A
UNMK 146 DP 591957	UNMK 147 DP 591957	ob394	338°33'00"	C		10.81 C		Class A
UNMK 147 DP 591957	UNMK 96 DP 591957	ob395	338°33'00"	C		3.59 C		Class A
UNMK 108 DP 591957	UNMK 148 DP 591957	ob319	68°33'00"	C		0.20 C		Class A
UNMK 148 DP 591957	UNMK 149 DP 591957	ob397	338°33'00"	C		10.81 C		Class A
UNMK 149 DP 591957	UNMK 150 DP 591957	ob398	338°33'00"	C		2.50 C		Class A
UNMK 150 DP 591957	UNMK 95 DP 591957	ob400	338°33'00"	C		1.09 C		Class A
UNMK 147 DP 591957	UNMK 107 DP 591957	ob396	68°33'00"	C		0.20 C		Class A
UNMK 107 DP 591957	UNMK 149 DP 591957	ob316	68°33'00"	C		0.20 C		Class A
UNMK 111 DP 591957	UNMK 151 DP 591957	ob325	248°33'00"	C		0.20 C		Class A
UNMK 151 DP 591957	UNMK 152 DP 591957	ob402	338°33'00"	C		10.81 C		Class A
UNMK 152 DP 591957	UNMK 153 DP 591957	ob403	338°33'00"	C		2.50 C		Class A
UNMK 153 DP 591957	UNMK 94 DP 591957	ob405	338°33'00"	C		1.08 C		Class A
UNMK 111 DP 591957	UNMK 155 DP 591957	ob326	68°33'00"	C		0.20 C		Class A
UNMK 155 DP 591957	UNMK 156 DP 591957	ob406	338°33'00"	C		10.81 C		Class A
UNMK 156 DP 591957	UNMK 157 DP 591957	ob407	338°33'00"	C		2.50 C		Class A

# Mark and Vector

Survey Number DP 591957

Meridional Circuit Wellington 2000

From	To	Code	Bearing	Adpt Surv	Bearing Correction	Distance	Adpt Surv	Class
UNMK 157 DP 591957	UNMK 93 DP 591957	ob409	338°33'00"	C		1.08 C		Class A
UNMK 150 DP 591957	UNMK 153 DP 591957	ob401	68°33'00"	C		3.70 C		Class A
UNMK 149 DP 591957	UNMK 152 DP 591957	ob399	68°33'00"	C		3.70 C		Class A
UNMK 152 DP 591957	UNMK 110 DP 591957	ob404	68°33'00"	C		0.20 C		Class A
UNMK 110 DP 591957	UNMK 156 DP 591957	ob323	68°33'00"	C		0.20 C		Class A
UNMK 113 DP 591957	UNMK 158 DP 591957	ob330	248°33'00"	C		0.20 C		Class A
UNMK 158 DP 591957	UNMK 159 DP 591957	ob411	338°33'00"	C		0.78 C		Class A
UNMK 159 DP 591957	UNMK 160 DP 591957	ob412	338°33'00"	C		2.50 C		Class A
UNMK 160 DP 591957	UNMK 92 DP 591957	ob413	338°33'00"	C		1.08 C		Class A
UNMK 113 DP 591957	UNMK 161 DP 591957	ob331	68°33'00"	C		0.20 C		Class A
UNMK 161 DP 591957	UNMK 162 DP 591957	ob414	338°33'00"	C		0.78 C		Class A
UNMK 162 DP 591957	UNMK 163 DP 591957	ob415	338°33'00"	C		2.50 C		Class A
UNMK 163 DP 591957	UNMK 91 DP 591957	ob417	338°33'00"	C		1.08 C		Class A
UNMK 157 DP 591957	UNMK 160 DP 591957	ob410	68°33'00"	C		6.36 C		Class A
UNMK 156 DP 591957	UNMK 159 DP 591957	ob408	68°33'00"	C		6.36 C		Class A
UNMK 99 DP 591957	UNMK 116 DP 591957	ob304	68°33'00"	C		5.33 C		Class A
UNMK 115 DP 591957	UNMK 164 DP 591957	ob335	248°33'00"	C		0.20 C		Class A
UNMK 164 DP 591957	UNMK 165 DP 591957	ob419	338°33'00"	C		10.84 C		Class A
UNMK 165 DP 591957	UNMK 166 DP 591957	ob420	338°33'00"	C		2.50 C		Class A
UNMK 166 DP 591957	UNMK 90 DP 591957	ob422	338°33'00"	C		1.08 C		Class A
UNMK 115 DP 591957	UNMK 167 DP 591957	ob336	68°33'00"	C		0.20 C		Class A
UNMK 167 DP 591957	UNMK 168 DP 591957	ob423	338°33'00"	C		10.84 C		Class A
UNMK 168 DP 591957	UNMK 169 DP 591957	ob424	338°33'00"	C		2.50 C		Class A
UNMK 169 DP 591957	UNMK 89 DP 591957	ob426	338°33'00"	C		1.08 C		Class A



# Mark and Vector

Survey Number DP 591957

Meridional Circuit Wellington 2000

From	To	Code	Bearing	Adpt Surv	Bearing Correction	Distance	Adpt Surv	Class
UNMK 118 DP 591957	UNMK 170 DP 591957	ob341	248°33'00"	C		0.20 C		Class A
UNMK 170 DP 591957	UNMK 171 DP 591957	ob428	338°33'00"	C		10.44 C		Class A
UNMK 171 DP 591957	UNMK 172 DP 591957	ob429	338°33'00"	C		0.40 C		Class A
UNMK 172 DP 591957	UNMK 173 DP 591957	ob431	338°33'00"	C		2.50 C		Class A
UNMK 173 DP 591957	UNMK 88 DP 591957	ob432	338°33'00"	C		1.07 C		Class A
UNMK 118 DP 591957	UNMK 174 DP 591957	ob342	68°33'00"	C		0.20 C		Class A
UNMK 174 DP 591957	UNMK 175 DP 591957	ob433	338°33'00"	C		10.44 C		Class A
UNMK 175 DP 591957	UNMK 176 DP 591957	ob434	338°33'00"	C		0.40 C		Class A
UNMK 176 DP 591957	UNMK 177 DP 591957	ob435	338°33'00"	C		2.50 C		Class A
UNMK 177 DP 591957	UNMK 87 DP 591957	ob437	338°33'00"	C		1.07 C		Class A
UNMK 120 DP 591957	UNMK 178 DP 591957	ob346	248°33'00"	C		0.20 C		Class A
UNMK 178 DP 591957	UNMK 179 DP 591957	ob439	338°33'00"	C		10.84 C		Class A
UNMK 179 DP 591957	UNMK 180 DP 591957	ob440	338°33'00"	C		2.50 C		Class A
UNMK 180 DP 591957	UNMK 86 DP 591957	ob442	338°33'00"	C		1.07 C		Class A
UNMK 120 DP 591957	UNMK 181 DP 591957	ob347	68°33'00"	C		0.20 C		Class A
UNMK 181 DP 591957	UNMK 182 DP 591957	ob443	338°33'00"	C		10.84 C		Class A
UNMK 182 DP 591957	UNMK 183 DP 591957	ob444	338°33'00"	C		2.50 C		Class A
UNMK 183 DP 591957	UNMK 85 DP 591957	ob446	338°33'00"	C		1.07 C		Class A
UNMK 162 DP 591957	UNMK 165 DP 591957	ob416	68°33'00"	C		6.42 C		Class A
UNMK 163 DP 591957	UNMK 166 DP 591957	ob418	68°33'00"	C		6.42 C		Class A
UNMK 165 DP 591957	UNMK 114 DP 591957	ob421	68°33'00"	C		0.20 C		Class A
UNMK 114 DP 591957	UNMK 168 DP 591957	ob333	68°33'00"	C		0.20 C		Class A
UNMK 168 DP 591957	UNMK 172 DP 591957	ob425	68°33'00"	C		3.70 C		Class A
UNMK 169 DP 591957	UNMK 173 DP 591957	ob427	68°33'00"	C		3.70 C		Class A

# Mark and Vector

Survey Number DP 591957

Meridional Circuit Wellington 2000

From	To	Code	Bearing	Adpt Surv	Bearing Correction	Distance	Adpt Surv	Class
UNMK 171 DP 591957	UNMK 117 DP 591957	ob430	68°33'00"	C		0.20 C		Class A
UNMK 117 DP 591957	UNMK 175 DP 591957	ob339	68°33'00"	C		0.20 C		Class A
UNMK 176 DP 591957	UNMK 179 DP 591957	ob436	68°33'00"	C		3.70 C		Class A
UNMK 177 DP 591957	UNMK 180 DP 591957	ob438	68°33'00"	C		3.70 C		Class A
UNMK 179 DP 591957	UNMK 119 DP 591957	ob441	68°33'00"	C		0.20 C		Class A
UNMK 119 DP 591957	UNMK 182 DP 591957	ob344	68°33'00"	C		0.20 C		Class A
UNMK 183 DP 591957	UNMK 121 DP 591957	ob447	68°33'00"	M		6.01 M		Class A
UNMK 182 DP 591957	UNMK 184 DP 591957	ob445	68°33'00"	C		5.02 C		Class A
UNMK 184 DP 591957	UNMK 100 DP 591957	ob448	158°33'00"	C		11.84 C		Class A
UNMK 122 DP 591957	UNMK 185 DP 591957	ob350	158°33'00"	C		2.64 C		Class A
UNMK 185 DP 591957	UNMK 101 DP 591957	ob449	158°33'00"	C		2.31 C		Class A
UNMK 123 DP 591957	UNMK 186 DP 591957	ob352	158°33'00"	C		3.75 C		Class A
UNMK 186 DP 591957	UNMK 102 DP 591957	ob451	158°33'00"	C		0.98 C		Class A
DISK 53 DP 591957	UNMK 185 DP 591957	ob242	21°38'00"	C		3.16 C		Class A
UNMK 185 DP 591957	DISK 55 DP 591957	ob450	21°38'00"	C		0.73 C		Class A
DISK 55 DP 591957	UNMK 186 DP 591957	ob246	5°43'00"	C		1.10 C		Class A
UNMK 186 DP 591957	DISK 67 DP 591957	ob452	5°43'00"	C		4.33 C		Class A
UNMK 104 DP 591957	UNMK 187 DP 591957	ob310	338°33'00"	C		0.86 C		Class A
UNMK 187 DP 591957	UNMK 188 DP 591957	ob453	338°33'00"	C		0.48 C		Class A
UNMK 188 DP 591957	UNMK 103 DP 591957	ob454	248°33'00"	C		5.09 C		Class A
UNMK 103 DP 591957	UNMK 193 DP 591957	ob308	338°33'00"	C		3.41 C		Class A
UNMK 193 DP 591957	DISK 57 DP 591957	ob462	248°33'00"	C		0.96 C		Class A
UNMK 188 DP 591957	UNMK 189 DP 591957	ob455	338°33'00"	C		10.33 C		Class A
UNMK 189 DP 591957	UNMK 124 DP 591957	ob456	68°33'00"	C		0.20 C		Class A

# Mark and Vector

Survey Number DP 591957

Meridional Circuit Wellington 2000

From	To	Code	Bearing	Adpt Surv	Bearing Correction	Distance	Adpt Surv	Class
UNMK 124 DP 591957	UNMK 190 DP 591957	ob354	68°33'00"	C		0.20 C		Class A
UNMK 190 DP 591957	UNMK 191 DP 591957	ob458	158°33'00"	C		10.81 C		Class A
UNMK 191 DP 591957	UNMK 125 DP 591957	ob460	248°33'00"	C		0.20 C		Class A
UNMK 125 DP 591957	UNMK 187 DP 591957	ob356	248°33'00"	C		0.20 C		Class A
UNMK 189 DP 591957	UNMK 192 DP 591957	ob457	248°33'00"	C		5.09 C		Class A
UNMK 192 DP 591957	UNMK 193 DP 591957	ob461	158°33'00"	C		6.92 C		Class A
UNMK 127 DP 591957	UNMK 194 DP 591957	ob359	248°33'00"	C		0.20 C		Class A
UNMK 194 DP 591957	UNMK 195 DP 591957	ob463	338°33'00"	C		10.27 C		Class A
UNMK 195 DP 591957	UNMK 126 DP 591957	ob464	68°33'00"	C		0.20 C		Class A
UNMK 127 DP 591957	UNMK 196 DP 591957	ob360	68°33'00"	C		0.20 C		Class A
UNMK 196 DP 591957	UNMK 197 DP 591957	ob465	338°33'00"	C		10.27 C		Class A
UNMK 197 DP 591957	UNMK 126 DP 591957	ob466	248°33'00"	C		0.20 C		Class A
UNMK 129 DP 591957	UNMK 198 DP 591957	ob364	248°33'00"	C		0.20 C		Class A
UNMK 198 DP 591957	UNMK 199 DP 591957	ob468	338°33'00"	C		10.86 C		Class A
UNMK 199 DP 591957	UNMK 128 DP 591957	ob469	68°33'00"	C		0.20 C		Class A
UNMK 128 DP 591957	UNMK 200 DP 591957	ob362	68°33'00"	C		0.20 C		Class A
UNMK 200 DP 591957	UNMK 201 DP 591957	ob470	158°33'00"	C		10.86 C		Class A
UNMK 201 DP 591957	UNMK 129 DP 591957	ob472	248°33'00"	C		0.20 C		Class A
UNMK 190 DP 591957	UNMK 195 DP 591957	ob459	74°46'00"	C		3.71 C		Class A
UNMK 197 DP 591957	UNMK 199 DP 591957	ob467	62°18'00"	C		3.73 C		Class A
UNMK 200 DP 591957	UNMK 202 DP 591957	ob471	68°33'00"	C		5.13 C		Class A
UNMK 202 DP 591957	UNMK 203 DP 591957	ob473	158°33'00"	C		11.67 C		Class A
UNMK 203 DP 591957	PEG 15 DP 591957	ob474	248°33'00"	C		5.33 C		Class A
DISK 73 DP 591957	UNMK 204 DP 591957	ob271	68°33'00"	C		5.61 C		Class A

# Mark and Vector

Survey Number DP 591957

Meridional Circuit Wellington 2000

From	To	Code	Bearing	Adpt Surv	Bearing Correction	Distance	Adpt Surv	Class
UNMK 204 DP 591957	UNMK 105 DP 591957	ob475	338°33'00"	C		2.50 C		Class A
UNMK 106 DP 591957	UNMK 205 DP 591957	ob314	158°33'00"	C		1.90 C		Class A
UNMK 205 DP 591957	UNMK 206 DP 591957	ob476	248°33'00"	C		9.84 C		Class A
UNMK 206 DP 591957	DISK 72 DP 591957	ob478	226°13'00"	C		1.04 C		Class A
UNMK 142 DP 591957	UNMK 207 DP 591957	ob389	338°33'00"	C		0.20 C		Class A
UNMK 207 DP 591957	UNMK 208 DP 591957	ob479	68°33'00"	C		10.83 C		Class A
UNMK 208 DP 591957	UNMK 143 DP 591957	ob480	158°33'00"	C		0.20 C		Class A
UNMK 143 DP 591957	UNMK 209 DP 591957	ob391	158°33'00"	C		0.20 C		Class A
UNMK 209 DP 591957	UNMK 210 DP 591957	ob481	248°33'00"	C		10.83 C		Class A
UNMK 210 DP 591957	UNMK 142 DP 591957	ob483	338°33'00"	C		0.20 C		Class A
UNMK 205 DP 591957	UNMK 211 DP 591957	ob477	68°33'00"	C		1.05 C		Class A
UNMK 211 DP 591957	UNMK 208 DP 591957	ob484	158°33'00"	C		5.04 C		Class A
UNMK 139 DP 591957	UNMK 212 DP 591957	ob383	338°33'00"	C		0.20 C		Class A
UNMK 212 DP 591957	UNMK 213 DP 591957	ob485	68°33'00"	C		10.26 C		Class A
UNMK 213 DP 591957	UNMK 140 DP 591957	ob486	158°33'00"	C		0.20 C		Class A
UNMK 140 DP 591957	UNMK 214 DP 591957	ob385	158°33'00"	C		0.20 C		Class A
UNMK 214 DP 591957	UNMK 215 DP 591957	ob487	248°33'00"	C		10.26 C		Class A
UNMK 215 DP 591957	UNMK 139 DP 591957	ob489	338°33'00"	C		0.20 C		Class A
UNMK 136 DP 591957	UNMK 216 DP 591957	ob377	338°33'00"	C		0.20 C		Class A
UNMK 216 DP 591957	UNMK 217 DP 591957	ob490	68°33'00"	C		10.86 C		Class A
UNMK 217 DP 591957	UNMK 137 DP 591957	ob491	158°33'00"	C		0.20 C		Class A
UNMK 137 DP 591957	UNMK 218 DP 591957	ob379	158°33'00"	C		0.20 C		Class A
UNMK 218 DP 591957	UNMK 219 DP 591957	ob492	248°33'00"	C		10.86 C		Class A
UNMK 219 DP 591957	UNMK 136 DP 591957	ob493	338°33'00"	C		0.20 C		Class A

# Mark and Vector

Survey Number DP 591957

Meridional Circuit Wellington 2000

From	To	Code	Bearing	Adpt Surv	Bearing Correction	Distance	Adpt Surv	Class
UNMK 132 DP 591957	UNMK 220 DP 591957	ob369	338°33'00"	C		0.20 C		Class A
UNMK 220 DP 591957	UNMK 221 DP 591957	ob494	68°33'00"	C		10.85 C		Class A
UNMK 221 DP 591957	UNMK 133 DP 591957	ob496	158°33'00"	C		0.20 C		Class A
UNMK 133 DP 591957	UNMK 222 DP 591957	ob371	158°33'00"	C		0.20 C		Class A
UNMK 222 DP 591957	UNMK 223 DP 591957	ob497	248°33'00"	C		10.85 C		Class A
UNMK 223 DP 591957	UNMK 132 DP 591957	ob498	338°33'00"	C		0.20 C		Class A
UNMK 223 DP 591957	UNMK 224 DP 591957	ob499	151°14'00"	C		4.75 C		Class A
UNMK 224 DP 591957	UNMK 225 DP 591957	ob500	68°33'00"	C		9.04 C		Class A
UNMK 225 DP 591957	UNMK 226 DP 591957	ob501	68°33'00"	C		1.45 C		Class A
UNMK 226 DP 591957	UNMK 130 DP 591957	ob502	68°33'00"	C		1.02 C		Class A
PEG 20 DP 591957	UNMK 225 DP 591957	ob197	338°33'00"	C		1.09 C		Class A
UNMK 130 DP 591957	UNMK 227 DP 591957	ob366	68°33'00"	C		0.68 C		Class A
UNMK 227 DP 591957	UNMK 228 DP 591957	ob503	68°33'00"	C		1.52 C		Class A
UNMK 228 DP 591957	UNMK 229 DP 591957	ob504	68°33'00"	C		9.08 C		Class A
UNMK 229 DP 591957	UNMK 218 DP 591957	ob506	345°52'00"	C		4.74 C		Class A
UNMK 228 DP 591957	PEG 19 DP 591957	ob505	158°33'00"	C		1.09 C		Class A
DISK 78 DP 591957	UNMK 134 DP 591957	ob277	158°27'00"	C		6.49 C		Class A
UNMK 134 DP 591957	UNMK 226 DP 591957	ob373	158°33'00"	C		4.92 C		Class A
DISK 72 DP 591957	UNMK 141 DP 591957	ob269	150°33'00"	C		4.89 C		Class A
UNMK 141 DP 591957	UNMK 138 DP 591957	ob387	158°33'00"	C		4.09 C		Class A
UNMK 138 DP 591957	UNMK 135 DP 591957	ob381	158°33'00"	C		4.09 C		Class A
UNMK 135 DP 591957	UNMK 227 DP 591957	ob375	158°33'00"	C		4.92 C		Class A
UNMK 209 DP 591957	UNMK 213 DP 591957	ob482	164°35'00"	C		3.72 C		Class A
UNMK 214 DP 591957	UNMK 217 DP 591957	ob488	151°58'00"	C		3.72 C		Class A

# Mark and Vector

Survey Number DP 591957

Meridional Circuit Wellington 2000

From	To	Code	Bearing	Adpt Surv	Bearing Correction	Distance	Adpt Surv	Class
UNMK 220 DP 591957	UNMK 131 DP 591957	ob495	338°33'00"	C		6.30 C		Class A
UNMK 105 DP 591957	UNMK 198 DP 591957	ob312	35°00'00"	C		1.46 C		Class A
IR II DP 591957	DISK 3 DP 591957	ob19	252°06'00"	M		14.66 M		
IR II DP 591957	PEG 4 DP 591957	ob20	253°28'00"	M		10.58 M		
IR II DP 591957	PEG 5 DP 591957	ob21	256°33'00"	M		6.50 M		
IR II DP 591957	DISK 2 DP 591957	ob22	250°54'00"	M		22.23 M		
IR VII DP 591957	PEG 1 DP 591957	ob52	359°47'00"	M		1.02 M		
IR VII DP 591957	PEG 7 DP 591957	ob53	257°49'00"	M		5.92 M		
IR VII DP 591957	PEG 8 DP 591957	ob54	254°02'00"	M		9.99 M		
SPS XII DP 591957	DISK 67 DP 591957	ob82	5°45'00"	M		13.02 M		
SPS XII DP 591957	DISK 66 DP 591957	ob83	355°25'00"	M		11.97 M		
SPS XII DP 591957	DISK 65 DP 591957	ob84	359°57'00"	M		9.52 M		
SPS XII DP 591957	DISK 64 DP 591957	ob85	343°48'00"	M		8.87 M		
SPS XII DP 591957	DISK 63 DP 591957	ob86	335°19'00"	M		8.84 M		
IR VI DP 591957	PEG 9 DP 591957	ob46	61°31'00"	M		8.02 M		
IR VI DP 591957	PEG 10 DP 591957	ob47	27°44'00"	M		1.51 M		
IR VI DP 591957	PEG 11 DP 591957	ob48	258°32'00"	M		5.71 M		
IR VI DP 591957	PEG 12 DP 591957	ob49	254°23'00"	M		9.77 M		
IR IV DP 591957	PEG 6 DP 591957	ob29	11°42'00"	M		3.08 M		
IR IV DP 591957	DISK 13 DP 591957	ob30	323°54'00"	M		2.67 M		
IR IV DP 591957	PEG 14 DP 591957	ob31	296°36'00"	M		1.01 M		
IR IV DP 591957	PEG 15 DP 591957	ob32	267°56'00"	M		6.96 M		
IR V DP 591957	PEG 17 DP 591957	ob34	344°23'00"	M		14.11 M		
IR V DP 591957	DISK 16 DP 591957	ob35	346°32'00"	M		10.04 M		

# Mark and Vector

Survey Number DP 591957

Meridional Circuit Wellington 2000

From	To	Code	Bearing	Adpt Surv	Bearing Correction	Distance	Adpt Surv	Class
IR V DP 591957	DISK 18 DP 591957	ob36	351°35'00" M			6.00 M		
IR V DP 591957	PEG 19 DP 591957	ob37	247°48'00" M			11.32 M		
IR V DP 591957	DISK 22 DP 591957	ob38	235°00'00" M			11.65 M		
IR V DP 591957	PEG 20 DP 591957	ob39	248°01'00" M			15.99 M		
IR V DP 591957	PEG 21 DP 591957	ob40	247°55'00" M			13.52 M		
IR V DP 591957	DISK 23 DP 591957	ob41	238°52'00" M			16.22 M		
SPS XII DP 591957	PEG 24 DP 591957	ob87	158°12'00" M			14.88 M		
SPS XII DP 591957	DISK 25 DP 591957	ob88	157°57'00" M			8.38 M		
SPS XIII DP 591957	DISK 68 DP 591957	ob109	153°32'00" M			14.78 M		
SPS XIII DP 591957	DISK 69 DP 591957	ob110	151°37'00" M			10.72 M		
SPS XIII DP 591957	DISK 70 DP 591957	ob111	149°37'00" M			8.34 M		
SPS XIII DP 591957	DISK 71 DP 591957	ob112	147°22'00" M			6.68 M		
SPS XIII DP 591957	DISK 62 DP 591957	ob113	64°22'00" M			8.11 M		
SPS XIII DP 591957	DISK 59 DP 591957	ob114	335°26'00" M			2.15 M		
SPS XIII DP 591957	DISK 60 DP 591957	ob115	4°38'00" M			2.39 M		
SPS XIII DP 591957	DISK 61 DP 591957	ob116	40°08'00" M			4.52 M		
SPS XIII DP 591957	DISK 72 DP 591957	ob117	121°25'00" M			2.14 M		
SPS XIII DP 591957	DISK 73 DP 591957	ob118	86°56'00" M			1.11 M		
SPS XIII DP 591957	DISK 76 DP 591957	ob119	189°48'00" M			9.63 M		
SPS XIII DP 591957	DISK 77 DP 591957	ob120	175°48'00" M			8.62 M		
SPS XIII DP 591957	DISK 78 DP 591957	ob121	156°43'00" M			8.24 M		
SPS XIII DP 591957	DISK 82 DP 591957	ob122	223°10'00" M			6.62 M		
SPS XIII DP 591957	DISK 83 DP 591957	ob123	209°25'00" M			4.55 M		
SPS XIII DP 591957	DISK 84 DP 591957	ob124	172°07'00" M			3.00 M		

# Mark and Vector

Survey Number DP 591957

Meridional Circuit Wellington 2000

From	To	Code	Bearing	Adpt Surv	Bearing Correction	Distance	Adpt Surv	Class
SPS XIII DP 591957	DISK 58 DP 591957	ob125	267°12'00" M			6.72 M		
SPS XII DP 591957	DISK 49 DP 591957	ob89	255°59'00" M			10.90 M		
SPS XII DP 591957	DISK 50 DP 591957	ob90	260°25'00" M			6.86 M		
SPS XII DP 591957	DISK 51 DP 591957	ob91	319°00'00" M			1.50 M		
SPS XII DP 591957	DISK 52 DP 591957	ob92	331°21'00" M			3.99 M		
SPS XII DP 591957	DISK 53 DP 591957	ob93	350°06'00" M			4.04 M		
SPS XII DP 591957	DISK 54 DP 591957	ob94	19°31'00" M			5.25 M		
SPS XII DP 591957	DISK 55 DP 591957	ob95	5°23'00" M			7.62 M		
SPS XII DP 591957	DISK 56 DP 591957	ob96	19°41'00" M			9.03 M		
SPS XII DP 591957	DISK 57 DP 591957	ob97	25°16'00" M			9.92 M		
SPS XII DP 591957	DISK 26 DP 591957	ob98	183°00'00" M			5.35 M		
SPS XII DP 591957	PEG 27 DP 591957	ob99	214°31'00" M			8.71 M		
SPS XII DP 591957	DISK 39 DP 591957	ob100	229°59'00" M			7.61 M		
SPS XII DP 591957	DISK 40 DP 591957	ob101	200°58'00" M			3.28 M		
SPS XII DP 591957	DISK 79 DP 591957	ob102	160°41'00" M			2.87 M		
SPS XII DP 591957	DISK 80 DP 591957	ob103	115°37'00" M			3.98 M		
SPS XII DP 591957	DISK 81 DP 591957	ob104	98°18'00" M			5.94 M		
SPS XII DP 591957	DISK 74 DP 591957	ob105	134°41'00" M			9.17 M		
SPS XII DP 591957	DISK 75 DP 591957	ob106	122°17'00" M			10.40 M		
SPS XI DP 591957	DISK 42 DP 591957	ob61	259°55'00" M			6.06 M		
SPS XI DP 591957	DISK 43 DP 591957	ob62	300°08'00" M			1.52 M		
SPS XI DP 591957	DISK 44 DP 591957	ob63	331°00'00" M			7.20 M		
SPS XI DP 591957	DISK 45 DP 591957	ob64	345°09'00" M			7.18 M		
SPS XI DP 591957	DISK 46 DP 591957	ob65	356°32'00" M			7.50 M		



# Mark and Vector

Survey Number DP 591957

Meridional Circuit Wellington 2000

From	To	Code	Bearing	Adpt Surv	Bearing Correction	Distance	Adpt Surv	Class
SPS XI DP 591957	DISK 47 DP 591957	ob66	41°52'00" M			2.59 M		
SPS XI DP 591957	DISK 48 DP 591957	ob67	59°54'00" M			7.73 M		
SPS XI DP 591957	DISK 28 DP 591957	ob68	97°01'00" M			10.74 M		
SPS XI DP 591957	IS 29 DP 591957	ob69	123°52'00" M			6.23 M		
SPS XI DP 591957	DISK 30 DP 591957	ob70	183°15'00" M			5.64 M		
SPS XI DP 591957	DISK 36 DP 591957	ob71	199°57'00" M			3.56 M		
SPS XI DP 591957	DISK 37 DP 591957	ob72	105°34'00" M			4.44 M		
SPS XI DP 591957	DISK 38 DP 591957	ob73	84°21'00" M			9.81 M		
SPS XI DP 591957	DISK 33 DP 591957	ob74	252°19'00" M			18.16 M		
SPS XI DP 591957	DISK 41 DP 591957	ob75	255°20'00" M			10.11 M		
SPS XI DP 591957	DISK 31 DP 591957	ob76	216°44'00" M			9.72 M		
SPS XI DP 591957	IS 32 DP 591957	ob77	227°25'00" M			14.21 M		
SPS XI DP 591957	DISK 34 DP 591957	ob78	237°09'00" M			13.52 M		
SPS XI DP 591957	DISK 35 DP 591957	ob79	230°37'00" M			8.68 M		
IR VI DP 591957	PEG 230 DP 591957	ob44	243°02'00" M			16.54 M		

Mark Name	Mark Condition	Description
BP 1 SO 511716		Fl. in conc. RL: 178.44
IR II DP 591957		-0.1 in lawn
IR III DP 591957		-0.1 in lawn
IR IV DP 591957		-0.1 in lawn
IR IX DP 591957		-0.1 in lawn
IR V DP 591957		-0.1 in lawn
IR VI DP 318758		-0.1 in berm. RL: 166.38
IR VI DP 591957		-0.1 in lawn
IR VII DP 591957		-0.1 in lawn
IR VIII DP 591957		-0.1 in lawn
IR X DP 591957		Now gone
IS 3 SO 511716		-0.1 in berm. RL: 186.50

# Mark and Vector

Survey Number DP 591957  
 Meridional Circuit Wellington 2000

Mark Name	Mark Condition	Description
IS I DP 591957		Fl. in footpath. RL: 166.53
IS II DP 369683		Fl. in seal. RL: 189.35
IS II DP 508518		Fl. in seal. RL: 191.78
IT (1) DP 13659		-0.3 in garden. RL: 190.43
IT I DP 471427		-0.1m, at edge of grass berm. RL: 161.85
IT X DP 7375		-0.10 in berm. RL: 164.32
LP I DP 23680		Fl. in top of kerb. RL: 168.08
LP IV DP 318758		Fl. in channel. RL: 166.15
LP V DP 318758		Fl. in top of kerb. RL: 169.05
NAIL 2 SO 511716		Fl. in dish channel with top broken off. RL: 183.31
PEG 230 DP 591957		Old Peg No Record Reinstates PEG DP 1733
SP XI DP 559233		Fl. in road. RL: 168.65
SPS XI DP 591957		Fl. in conc. RL: 187.17
SPS XII DP 591957		Fl. in conc. RL: 183.93
SPS XIII DP 591957		Fl. in conc. RL: 182.68
SPS XIV DP 591957		Fl. in conc. RL: 180.46
SPS XV DP 591957		Fl. in channel. RL: 183.83
SS 1K12 SO 19898		Under cover in garden. RL: 161.63
SS 1K18 SO 19912		Under cover in footpath. RL: 160.97
SSP II DP 524260		Fl. in footpath. RL: 157.60

\*\*\* End of Report \*\*\*



LOT 7  
DP 14084

**SpencerHolmes**  
engineers - surveyors - planners

**BOUNDARIES  
BELOW RL: 189.80m**

LOT 4

HL LOT 3  
94m<sup>2</sup>

LOT 2

AREA K  
AREA I

AD 44 1.77 AD 45  
68°33'

HL  
LOT 20  
303m<sup>2</sup>

ARA TOUTOUWAI  
LOT 7  
DP 14084

**BOUNDARIES  
ABOVE RL: 189.80m**

AREA J  
AD 42 4.99  
UNMK 98  
AD 43 0.15  
338°33'

LOT 4

HL LOT 3  
96m<sup>2</sup>

LOT 2

HL LOT 3

HL  
LOT 20

AREA I  
AREA K

RL: 189.80

LOT 4

LOT 2

AREA K  
AREA I

UNMK 500 1.37 AD 45  
68°33'

HL  
LOT 20  
301m<sup>2</sup>

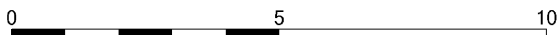
UNMK 98 UNMK 501  
AD 43 0.40

AREA J

AD 42 4.99  
68°33' (5.39)

ARA TOUTOUWAI

SECTION A - A'



**Spencer Holmes Ltd**

Level 10 - 57 Willis Street Ph (04) 472 2261  
PO Box 588 www.spencerholmes.co.nz  
Wellington NZ admin@spencerholmes.co.nz

DP 591957

**HEIGHT LIMITED DIAGRAM**

SHEET 1 OF 2

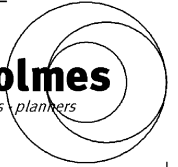
CAD FILE S19-0916-HL1a - HL1

DATE 11/09/2023

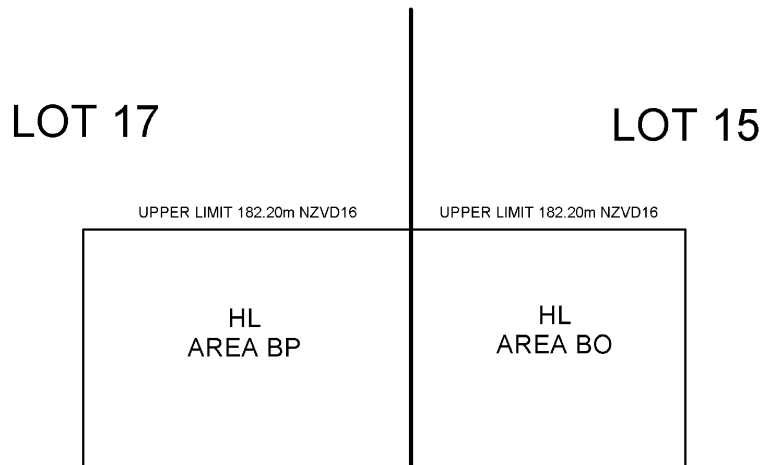
SCALE 1:100 @A3

DRAWING NUMBER  
S19-0916-HL1

REV  
B



**EASEMENT 'AO' SECTION**  
NOT TO SCALE



**EASEMENTS 'BO' AND 'BP' SECTION**  
NOT TO SCALE

**Spencer Holmes Ltd**

Level 10 - 57 Willis Street Ph (04) 472 2261  
PO Box 588 www.spencerholmes.co.nz  
Wellington NZ admin@spencerholmes.co.nz

**SHEET 2 OF 2**

**DP 591957**

**HEIGHT LIMITED DIAGRAM**

CAD FILE S19-0916-HL1a - HL2

DATE 29/05/2023

SCALE NOT TO SCALE

DRAWING NUMBER S19-0916-HL2

REV  
A

### Memorandum of Easements

(Pursuant to s243 Resource Management Act 1991)

Purpose	Shown	Burdened Land (Servient Tenement)	Benefited Land (Dominant Tenement)
Party Wall	C	Lot 1	Lot 2
	E	Lot 2	Lot 1
	I	Lot 2	HL Lot 3
	K	HL Lot 3	Lot 2
	R	Lot 4	Lot 5
	T	Lot 5	Lot 4
	X	Lot 5	Lot 6
	Y	Lot 6	Lot 5
	AC	Lot 6	Lot 7
	AD	Lot 7	Lot 6
	AN	Lot 8	Lot 9
	AQ	Lot 9	Lot 8
	AS	Lot 9	Lot 10

DP 591957

### EASEMENT SCHEDULE

It 591957 easements v3.docx 23/8/2023 11:27 AM

**Memorandum of Easements**  
 (Pursuant to s243 Resource Management Act 1991)

Purpose	Shown	Burdened Land (Servient Tenement)	Benefited Land (Dominant Tenement)
Party Wall	AT	Lot 10	Lot 9
	AX	Lot 10	Lot 11
	AW	Lot 11	Lot 10
	BA	Lot 12	Lot 13
	BE	Lot 13	Lot 12
	BG	Lot 13	Lot 14
	BI	Lot 14	Lot 13
	BK	Lot 14	Lot 15
	BL	Lot 15	Lot 14
	BS	Lot 17	Lot 16
	BT	Lot 16	Lot 17

DP 591957

**EASEMENT SCHEDULE**

It 591957 easements v3.docx 23/8/2023 11:27 AM

### Memorandum of Easements

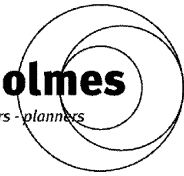
(Pursuant to s243 Resource Management Act 1991)

Purpose	Shown	Burdened Land (Servient Tenement)	Benefited Land (Dominant Tenement)
Right to Drain Water	F, G, H	Lot 2	Lot 1
	L, M, N	HL Lot 3	Lots 1-2
	O, P, Q	Lot 4	Lots 1-2 & HL Lot 3
	U, V, W	Lot 5	Lots 1-2, 4 & HL Lot 3
	Z, AA, AB	Lot 6	Lots 1-2, 4-5 & HL Lot 3
	AE, AF	Lot 7	Lots 1-2, 4-6 & HL Lot 3
	AG, AH	Lot 27	Lots 8-9, 11
	AK, AL	Lot 28	Lots 8-10
	AM	Lot 8	Lots 1-2, 4-7, 9-11 & HL Lot 3
	AR	Lot 9	Lots 1-2, 4-8, 10-11 & HL Lot 3
	AU	Lot 10	Lots 1-2, 4-9, 11 & HL Lot 3
	AV	Lot 11	Lots 1-2, 4-10, 12-17, 21-27, 29-33 & HL Lot 3
AY, AZ, BW	Lot 12	Lots 1-2, 4-11, 13-17, 21-33 & HL Lot 3	

**DP 591957**

**EASEMENT SCHEDULE**

It 591957 easements v3.docx 23/8/2023 11:27 AM



**Memorandum of Easements**  
(Pursuant to s243 Resource Management Act 1991)

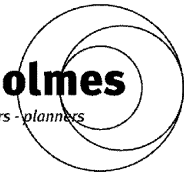
Purpose	Shown	Burdened Land (Servient Tenement)	Benefited Land (Dominant Tenement)
Right to Drain Water	BD	Lot 13	Lot 12
	BF	Lot 13	Lots 12, 14-17
	BH	Lot 14	Lots 12-13
	BJ	Lot 14	Lots 12-13, 15-17
	BM	Lot 15	Lots 12-14
	BN	Lot 15	Lots 12-14, 16-17
	BQ	Lot 17	Lots 13-16
	BR	Lot 17	Lots 12-15
	BU	Lot 16	Lots 12-14
	BV	Lot 16	Lots 13-15, 17
	Lot 26	Lot 26	Lots 1-2, 4-8, 10-17, 21-25, 27-33 & HL Lot 3
	Lot 29	Lot 29	Lots 1-2, 4-12, 14-17, 21-28, 30-33 & HL Lot 3
	Lot 30	Lot 30	Lots 1-2, 4-13, 15-17, 21-29, 31-33 & HL Lot 3

**DP 591957**

**EASEMENT SCHEDULE**

It 591957 easements v3.docx 23/8/2023 11:27 AM





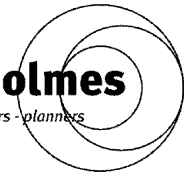
**Memorandum of Easements**  
(Pursuant to s243 Resource Management Act 1991)

Purpose	Shown	Burdened Land (Servient Tenement)	Benefited Land (Dominant Tenement)
Right to Drain Water	Lot 31	Lot 31	Lots 1-2, 4-14, 16-17, 21-30, 32-33 & HL Lot 3
	Lot 32	Lot 32	Lots 1-2, 4-15, 17, 21-31, 33 & HL Lot 3
	Lot 33	Lot 33	Lots 1-2, 4-16, 17, 21-32 & HL Lot 3
Right to Drain Sewage	AV	Lot 11	Lots 1-2, 4-10, 12-17 & HL Lot 3
	AY	Lot 12	Lots 1-2, 4-10 & HL Lot 3
	BW	Lot 12	Lots 1-2, 4-9 & HL Lot 3
	AZ	Lot 12	Lots 1-2, 4-11, 13-17 & HL Lot 3
	BD	Lot 13	Lot 12
	BF	Lot 13	Lots 12, 14-17
	BH	Lot 14	Lots 12-13, 16
	BJ	Lot 14	Lots 12-13, 15-17
	BM, BN	Lot 15	Lots 12-14, 16-17
	BR	Lot 17	Lots 12-16

**DP 591957**

**EASEMENT SCHEDULE**

It 591957 easements v3.docx 23/8/2023 11:27 AM



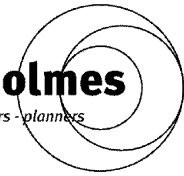
**Memorandum of Easements**  
(Pursuant to s243 Resource Management Act 1991)

Purpose	Shown	Burdened Land (Servient Tenement)	Benefited Land (Dominant Tenement)
Right to Drain Sewage	BU	Lot 16	Lots 12-14
Right to Convey Water	BW	Lot 12	Lots 8-11
	BB	Lot 10	Lot 11
	BC	Lot 12	Lots 13-17
	BD	Lot 13	Lots 14-17
	BH	Lot 14	Lots 15-17
	BM	Lot 15	Lot 17
	BR	Lot 17	Lot 15
	BU	Lot 16	Lots 14-15, 17
	Lot 29	Lot 29	Lots 12, 14-17
Right to Convey Telecommunications and Right to Convey Electricity	AY, BW	Lot 12	Lots 8-11, 13-17
	BB	Lot 10	Lot 11
	BC	Lot 12	Lots 13-17

**DP 591957**

**EASEMENT SCHEDULE**

It 591957 easements v3.docx 23/8/2023 11:27 AM



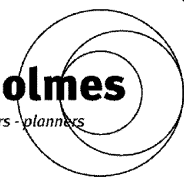
**Memorandum of Easements**  
(Pursuant to s243 Resource Management Act 1991)

Purpose	Shown	Burdened Land (Servient Tenement)	Benefited Land (Dominant Tenement)
Right to Convey Telecommunications and Right to Convey Electricity	BD	Lot 13	Lots 12, 14-17
	BH	Lot 14	Lots 12-13, 15-17
	BM	Lot 15	Lot 17
	BR	Lot 17	Lot 15
	BU	Lot 16	Lots 12-15, 17
	Lot 21	Lot 21	Lots 1, 4-17, 22-33 & HL Lot 3
	Lot 22	Lot 22	Lots 1-2, 4-17, 21, 23-33
	Lot 23	Lot 23	Lots 1-2, 5-17, 21-22, 24-33 & HL Lot 3
	Lot 24	Lot 24	Lots 1-2, 4, 6-17, 21-23, 25-33 & HL Lot 3
	Lot 25	Lot 25	Lots 1-2, 4-5, 7-17, 21-24, 26-33 & HL Lot 3
	Lot 26	Lot 26	Lots 1-2, 4-8, 10-17, 21-25, 27-33 & HL Lot 3

**DP 591957**

**EASEMENT SCHEDULE**

It 591957 easements v3.docx 23/8/2023 11:27 AM



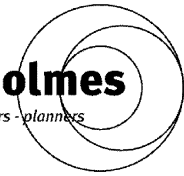
**Schedule of Easements**

Purpose	Shown	Burdened Land (Servient Tenement)	Benefited Land (Dominant Tenement)
Right of Way (Pedestrian)	A	Lot 1	Lots 2, 4-17, 21-33 & HL Lot 3
	D	Lot 2	Lots 1, 4-17, 22-33 & HL Lot 3
	J	HL Lot 3	Lots 1-2, 4-17, 21, 23-33
	S	Lot 4	Lots 1-2, 5-17, 21-22, 24-33 & HL Lot 3
	AH, AI	Lot 27	Lots 1-2, 4-9, 11-17, 21-26, 28-33 & HL Lot 3
	AJ, AK	Lot 28	Lots 1-2, 4-10, 12-17, 21-27, 29-33 & HL Lot 3
	AP	Lot 8	Lots 9, 26
	AY	Lot 12	Lots 10-11, 27-28
	BC	Lot 12	Lots 1-2, 4-11, 13-17, 21-33 & HL Lot 3
	BD	Lot 13	Lots 1-2, 4-12, 14-17, 21-28, 30-33 & HL Lot 3
	BH	Lot 14	Lots 1-2, 4-13, 15-17, 21-29, 31-33 & HL Lot 3
	BM	Lot 15	Lots 1-2, 4-14, 16-17, 21-30, 32-33 & HL Lot 3
	BR	Lot 17	Lots 1-2, 4-16, 21-32 & HL Lot 3
BU	Lot 16	Lots 1-2, 4-15, 17, 21-31, 33 & HL Lot 3	

**DP 591957**

**EASEMENT SCHEDULE**

It 591957 easements v3.docx 23/8/2023 11:27 AM



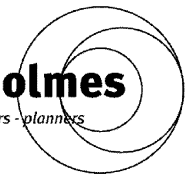
**Schedule of Easements**

Purpose	Shown	Burdened Land (Servient Tenement)	Benefited Land (Dominant Tenement)	Lower Limit	Upper Limit
Right of Way (Pedestrian)	HL AO	Lot 8	Lots 1-2, 4-7, 9-17, 21-33 & HL Lot 3	-	184.90
Right of Way (Pedestrian)	HL BO	Lot 15	Lots 1-2, 4-14, 16-17, 21-30, 32-33 & HL Lot 3	-	182.20
Right to Drain Water	HL BO	Lot 15	Lots 12-14, 16-17	-	182.20
Right to Drain Sewage	HL BO	Lot 15	Lots 12-14, 16-17	-	182.20
Right of Way (Pedestrian)	HL BP	Lot 17	Lots 1-2, 4-16, 21-32 & HL Lot 3	-	182.20
Right to Drain Water	HL BP	Lot 17	Lots 12-16	-	182.20
Right to Drain Sewage	HL BP	Lot 17	Lots 12-16	-	182.20

**DP 591957**

**EASEMENT SCHEDULE**

It 591957 easements v3.docx 23/8/2023 11:27 AM



**Schedule of Easements**

Purpose	Shown	Burdened Land (Servient Tenement)	Benefited Land (Dominant Tenement)
Right of Support	B	Lot 1	Lot 2
	F	Lot 2	Lot 1
	H	Lot 2	HL Lot 3
	L	HL Lot 3	Lot 2
	N	HL Lot 3	Lot 4
	O	Lot 4	HL Lot 3
	Q	Lot 4	Lot 5
	U	Lot 5	Lot 4
	W	Lot 5	Lot 6
	Z	Lot 6	Lot 5
	AB	Lot 6	Lot 7
	AE	Lot 7	Lot 6

**DP 591957**

**EASEMENT SCHEDULE**

It 591957 easements v3.docx 23/8/2023 11:27 AM



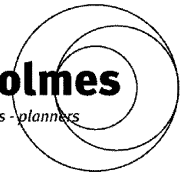
**Schedule of Easements in Gross**

Purpose	Shown	Burdened Land (Servient Tenement)	Grantee
Right to Convey Water	AY, BW	Lot 12	Wellington City Council
	HL Lot 20	HL Lot 20	
	Lot 21	Lot 21	
	Lot 22	Lot 22	
	Lot 23	Lot 23	
	Lot 24	Lot 24	
	Lot 25	Lot 25	
	Lot 26	Lot 26	
	Lot 29	Lot 29	
Right to Convey Telecommunications	AY, BW	Lot 12	Chorus New Zealand Limited
	BB	Lot 10	
	BC	Lot 12	
	BD	Lot 13	

**DP 591957**

**EASEMENT SCHEDULE**

It 591957 easements v3.docx 23/8/2023 11:27 AM



**Schedule of Easements in Gross**

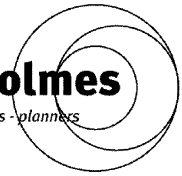
Purpose	Shown	Burdened Land (Servient Tenement)	Grantee
Right to Convey Telecommunications	BH	Lot 14	Chorus New Zealand Limited
	BM	Lot 15	
	BR	Lot 17	
	BU	Lot 16	
	HL Lot 20	HL Lot 20	
	Lot 21	Lot 21	
	Lot 22	Lot 22	
	Lot 23	Lot 23	
	Lot 24	Lot 24	
	Lot 25	Lot 25	
	Lot 26	Lot 26	

**DP 591957**

**EASEMENT SCHEDULE**

It 591957 easements v3.docx 23/8/2023 11:27 AM





### **AMALGAMATION CONDITION**

Pursuant to section 220(1)(b) of the Resource Management Act 1991,

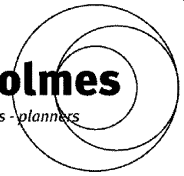
- That Lots 2 & 21 hereon to be held together in one record of title.
- That Lots 3 & 22 hereon to be held together in one record of title.
- That Lots 4 & 23 hereon to be held together in one record of title.
- That Lots 5 & 24 hereon to be held together in one record of title.
- That Lots 6 & 25 hereon to be held together in one record of title.
- That Lots 9 & 26 hereon to be held together in one record of title.
- That Lots 10 & 27 hereon to be held together in one record of title.
- That Lots 11 & 28 hereon to be held together in one record of title.
- That Lots 13 & 29 hereon to be held together in one record of title.
- That Lots 14 & 30 hereon to be held together in one record of title.
- That Lots 15 & 31 hereon to be held together in one record of title.
- That Lots 16 & 32 hereon to be held together in one record of title.
- That Lots 17 & 33 hereon to be held together in one record of title.
- That Lot 18 & 19 hereon (communal) to be held as to seventeen undivided one- seventeenth share by the owners of lots 1 – 17 hereon as tenants in common in the said shares and that individual records of title be issued in accordance therewith.
- That Lot 20 hereon (legal access) to be held as to seventeen undivided one-seventeenth share by the owners of lots 1 – 17 hereon as tenants in common in the said shares and that individual records of title be issued in accordance therewith.

(Refer LINZ Request No. 1733891)

**DP 591957**

**AMALGAMATION CONDITION**

It 591957 amalgamation.docx 5/25/2023 3:20 PM



## HEIGHT DATUM

Origin of Heights is OLP V DP 318758 (F1L1), RL=169.05m  
Heights are in terms of New Zealand Vertical Datum 2016 3V Order  
Source Land Information New Zealand Geodetic Database (02-05-2023)

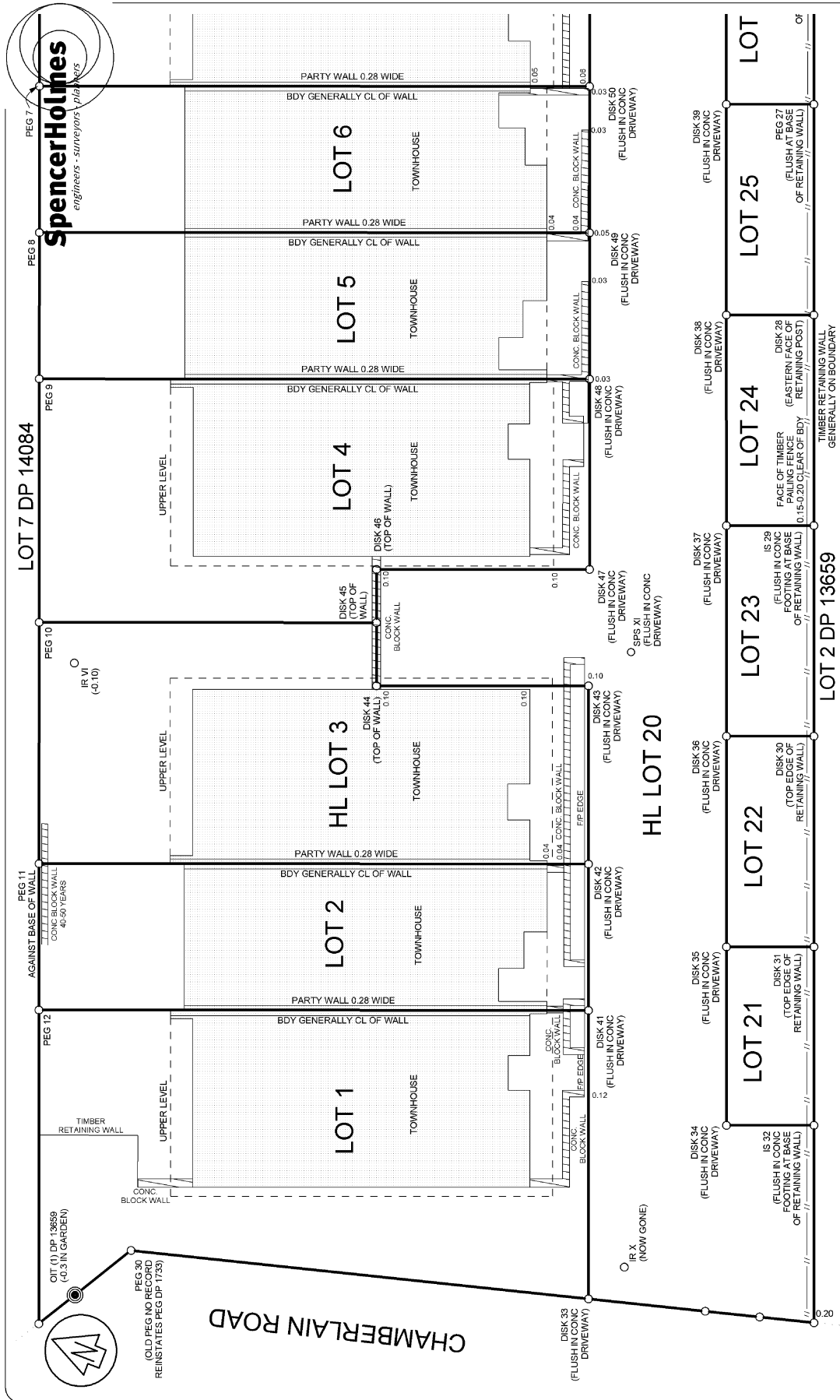
*Origin of Heights checked against OBP 1 SO 511716 (F1L0), RL 178.44m, 3V Order  
Source Land Information New Zealand Geodetic Database (02-05-2023)*

DP 591957

## HEIGHT DATUM INFORMATION

It 591957 height datum.docx 5/25/2023 4:13 PM

# Occupation Diagram

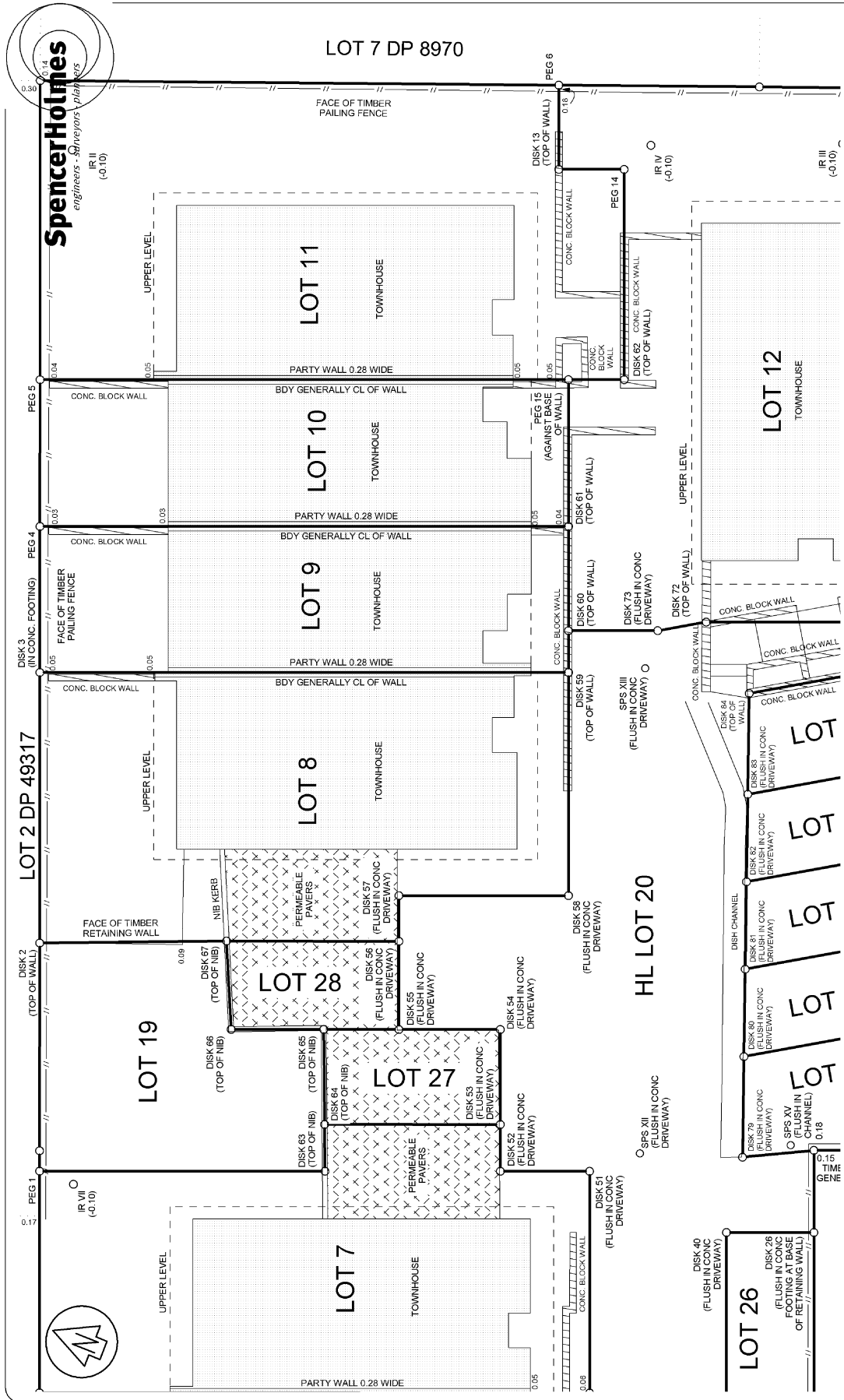


**DP 591957**  
**OCCUPATION DIAGRAM**  
**SHEET 1 OF 3**

**Spencer Holmes Ltd**  
Level 10 - 57 Willis Street Ph (04) 472 2261  
PO Box 588 www.spencerholmes.co.nz  
Wellington NZ admin@spencerholmes.co.nz

NOTES:  
OTHERWISE SHOWN THERE IS NO OCCUPATION ON THE NEW PRIMARY BOUNDARIES UNLESS OTHERWISE SHOWN. ALL OCCUPATION IS LESS THAN TWO YEARS OLD.

CAD FILE S19-0916-OC1 - OC1  
DATE 12/05/2023  
SCALE 1 : 100 @ A3  
DRAWING NUMBER S19-0916-01  
REV A



**SpencerHolmes**  
engineers - Surveyors - Planners

IR II (-0.10)

IR III (-0.10)

IR IV (-0.10)

IR V (-0.10)

IR VI (-0.10)

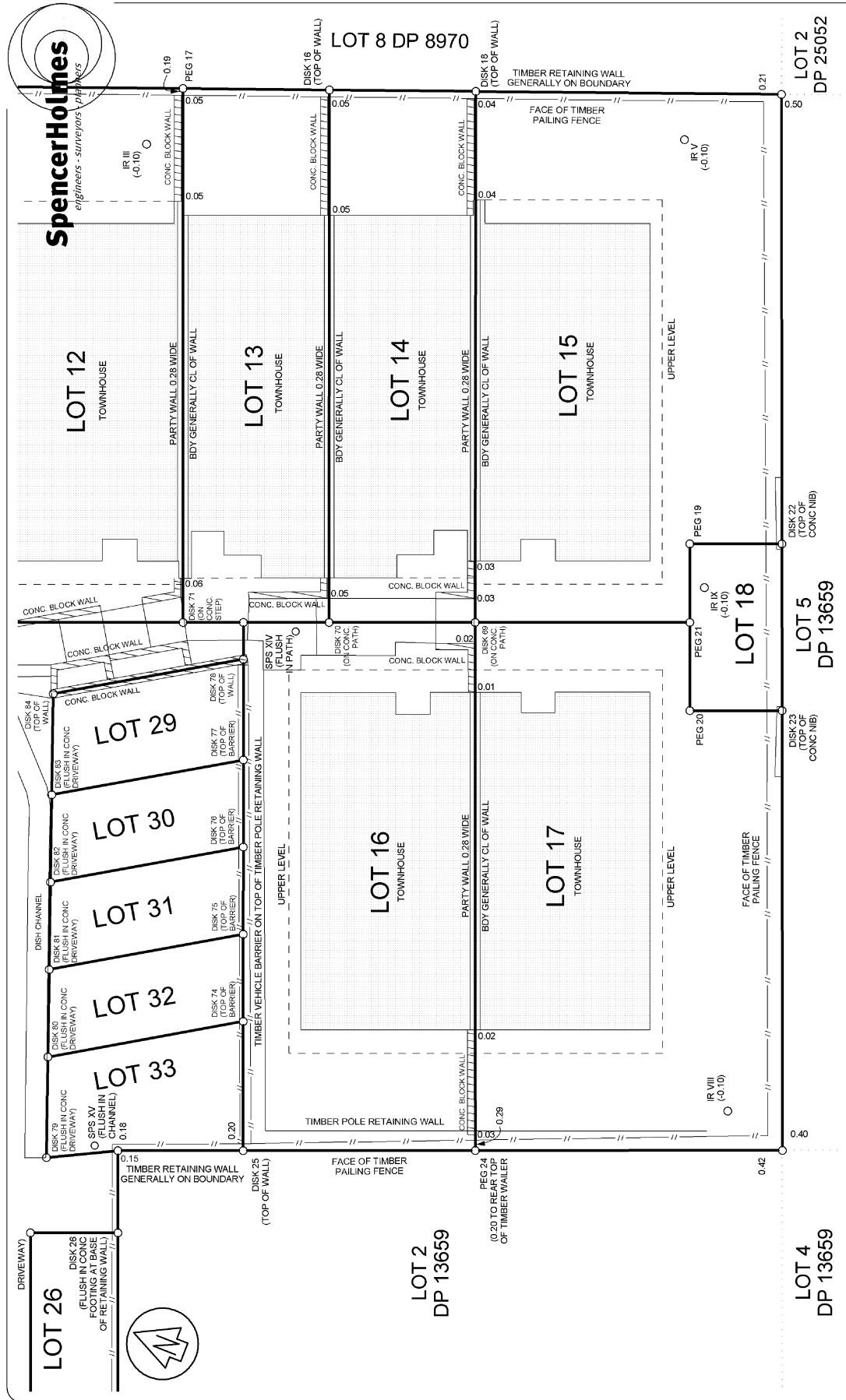
CAD FILE	S19-0916-OC1 - OC2
DATE	12/05/2023
SCALE	1 : 100 @ A3
DRAWING NUMBER	S19-0916-O2
REV	A

**DP 591957**  
OCCUPATION DIAGRAM  
SHEET 2 OF 3

0 5 10

**Spencer Holmes Ltd**  
Level 10 - 57 Willis Street Ph (04) 472 2261  
PO Box 588 www.spencerholmes.co.nz  
Wellington NZ admin@spencerholmes.co.nz

NOTES:  
OTHERWISE SHOWN THERE IS NO OCCUPATION ON THE NEW PRIMARY BOUNDARIES UNLESS OTHERWISE SHOWN, ALL OCCUPATION IS LESS THAN TWO YEARS OLD.



**DP 591957**  
**OCCUPATION DIAGRAM**  
**SHEET 3 OF 3**

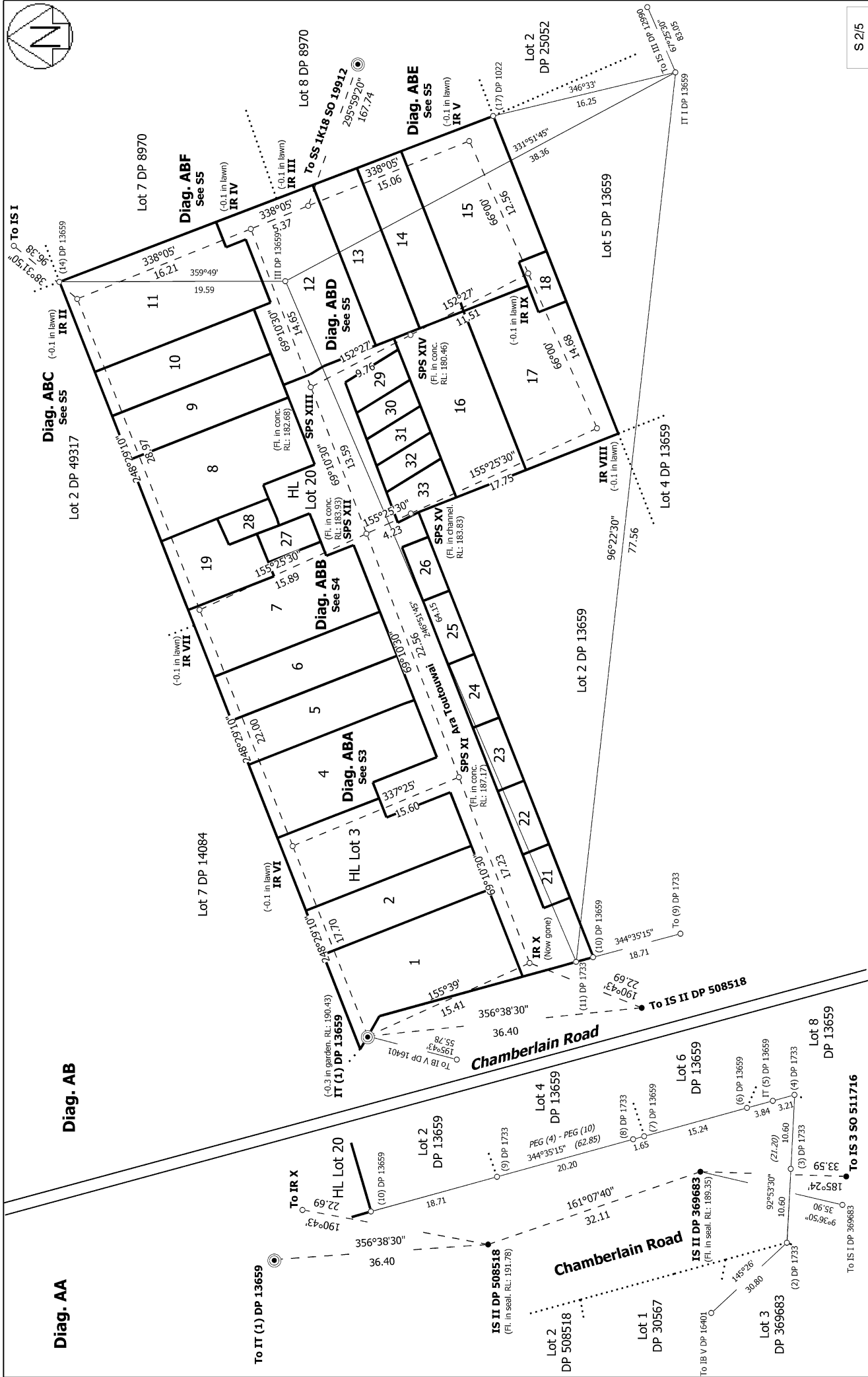
CAD FILE: S19-0916-OC1 - OC3  
 DATE: 12/05/2023  
 SCALE: 1 : 100 @ A3  
 DRAWING NUMBER: S19-0916-O3  
 REV: A

Scale bar: 0 to 10 meters.

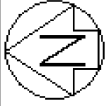
**Spencer Holmes Ltd**  
 Level 10 - 57 Willis Street Ph (04) 472 2261  
 PO Box 588 www.spencerholmes.co.nz  
 Wellington NZ admin@spencerholmes.co.nz

NOTES:  
 1. OTHERWISE SHOWN, THERE IS NO OCCUPATION ON THE NEW PRIMARY BOUNDARIES UNLESS OTHERWISE SHOWN. ALL OCCUPATION IS LESS THAN TWO YEARS OLD.



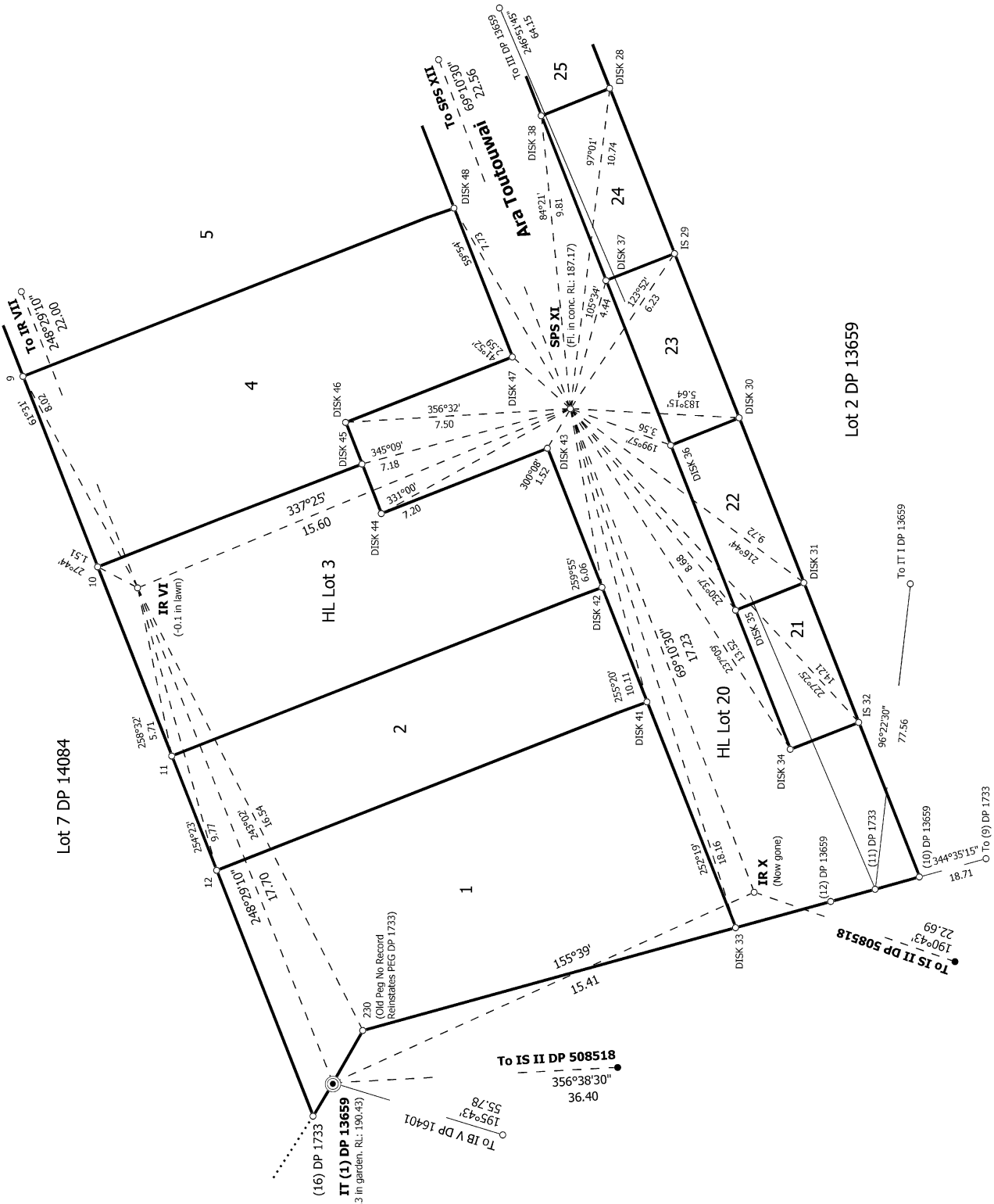


S 2/5	Record of Survey DP 591957 Deposited on: 5/09/2023
Surveyor: Simon John Conway Firm: Spencer Holmes Ltd Date of Survey: 25/05/2023	Lots 1-2, Lots 4-19, Lots 21-33, HL Lot 3 & HL Lot 20 Being the Subdivision of Lots 1 & 3 DP 13659
Land District: Wellington	Digitally Generated Plan Generated on: 10/10/2023 07:25am Page 47 of 61



Diag. ABA

Lot 7 DP 14084



Lot 2 DP 13659

S 3/5

Land District: Wellington

Digitally Generated Plan

Generated on: 10/10/2023 07:25:01 Page 48 of 61

Lots 1-2, Lots 4-19, Lots 21-33, HL Lot 3 & HL Lot 20 Being the Subdivision of

Lots 1 & 3 DP 13659

Surveyor: Simon John Conway

Firm: Spencer Holmes Ltd

Date of Survey: 25/05/2023

Record of Survey

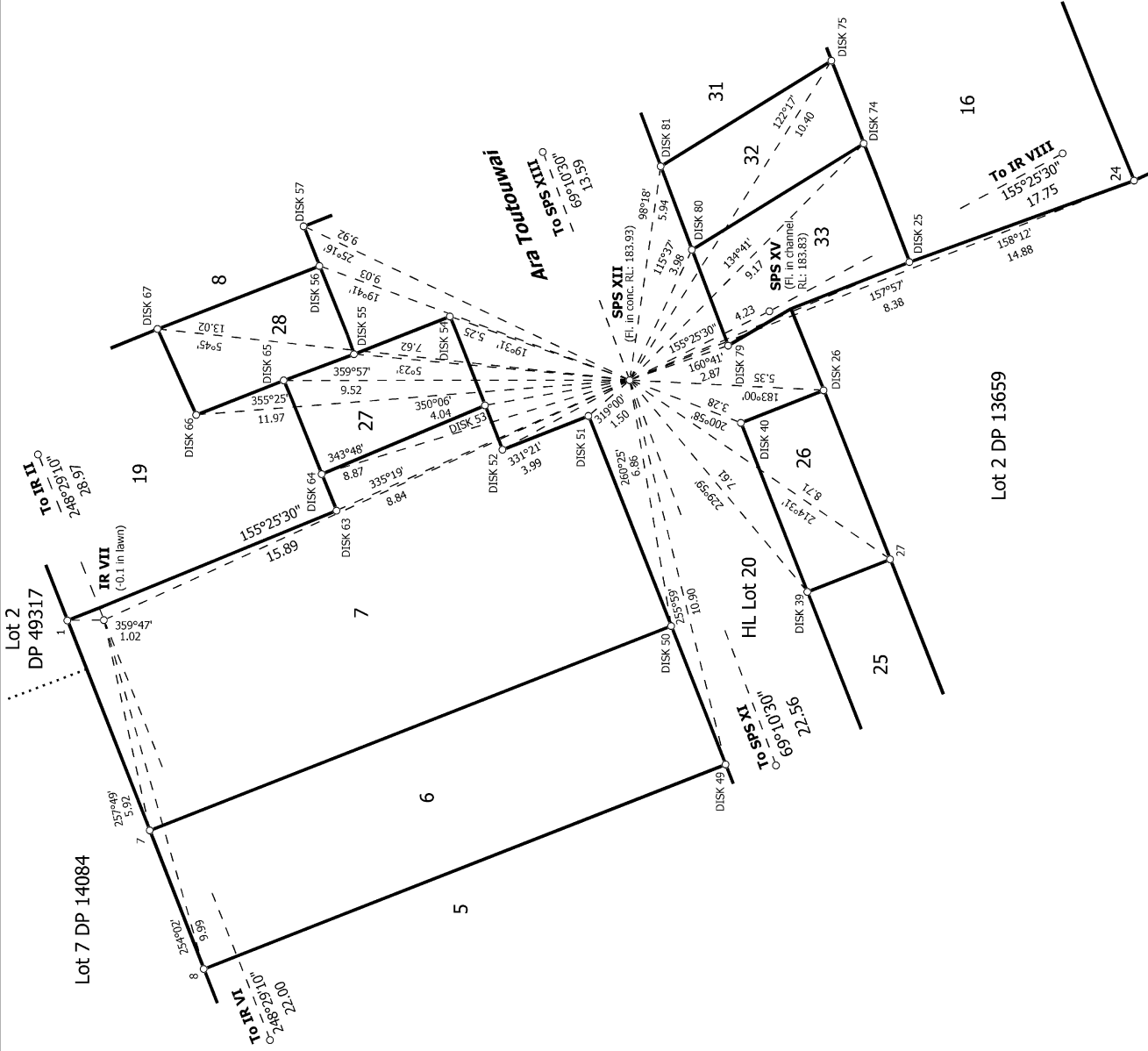
DP 591957

Deposited on: 5/09/2023





Diag. ABB



S 4/5

Land District: Wellington

Digitally Generated Plan

Generated on: 10/10/2023 07:25am Page 49 of 61

Lots 1-2, Lots 4-19, Lots 21-33, HL Lot 3 & HL Lot 20 Being the Subdivision of

Lots 1 & 3 DP 13659

Surveyor: Simon John Conway

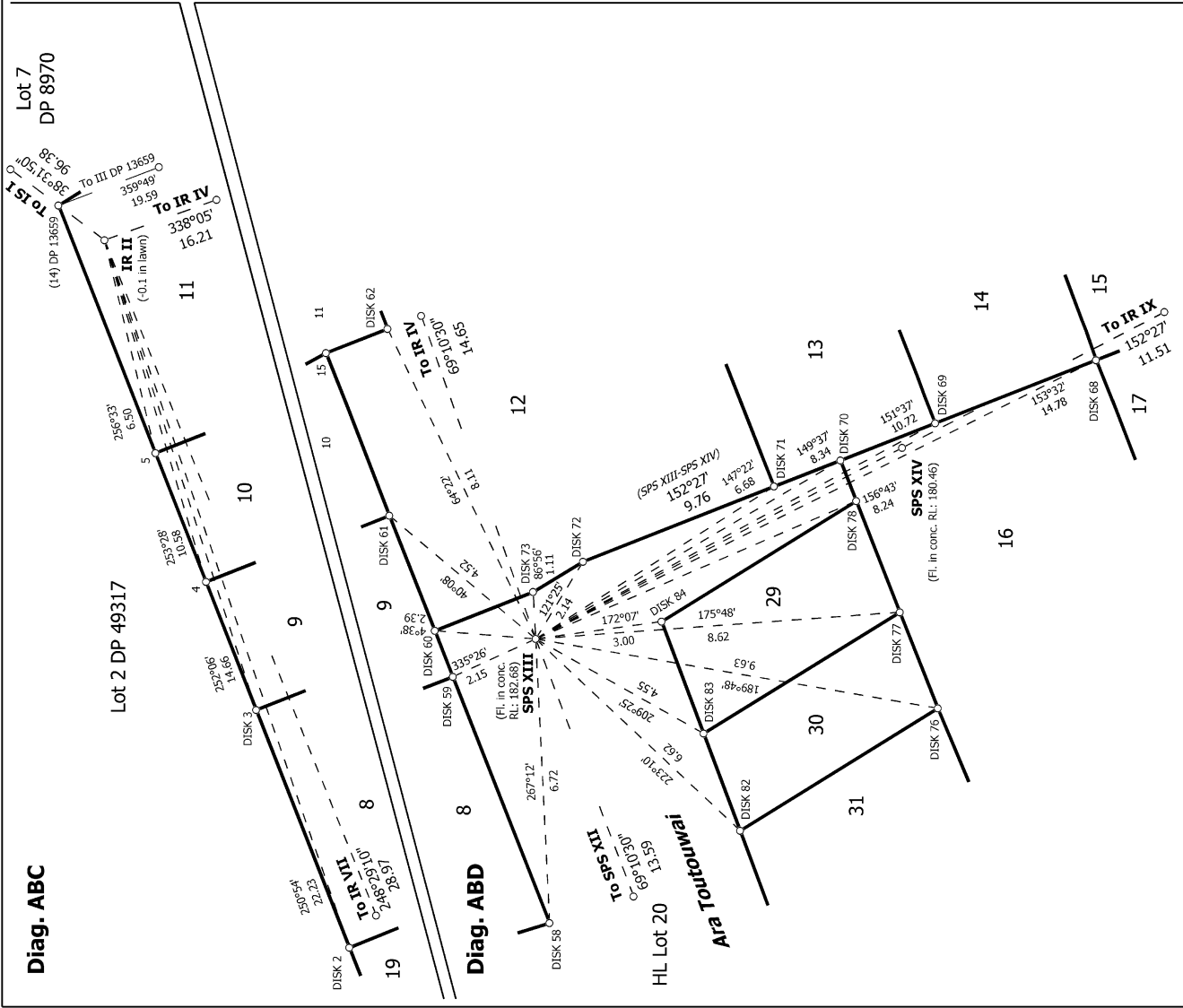
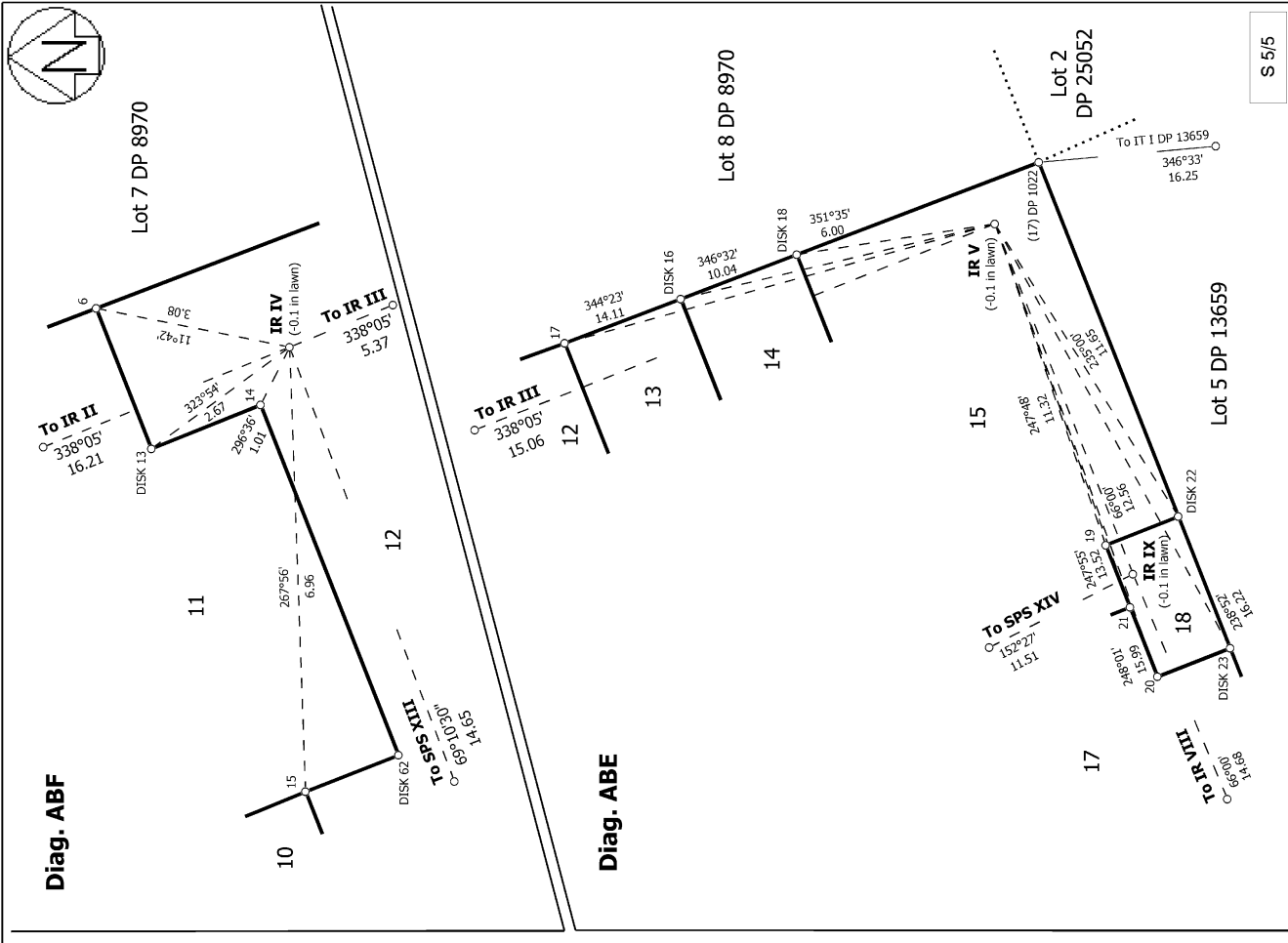
Firm: Spencer Holmes Ltd

Date of Survey: 25/05/2023

Record of Survey

DP 591957

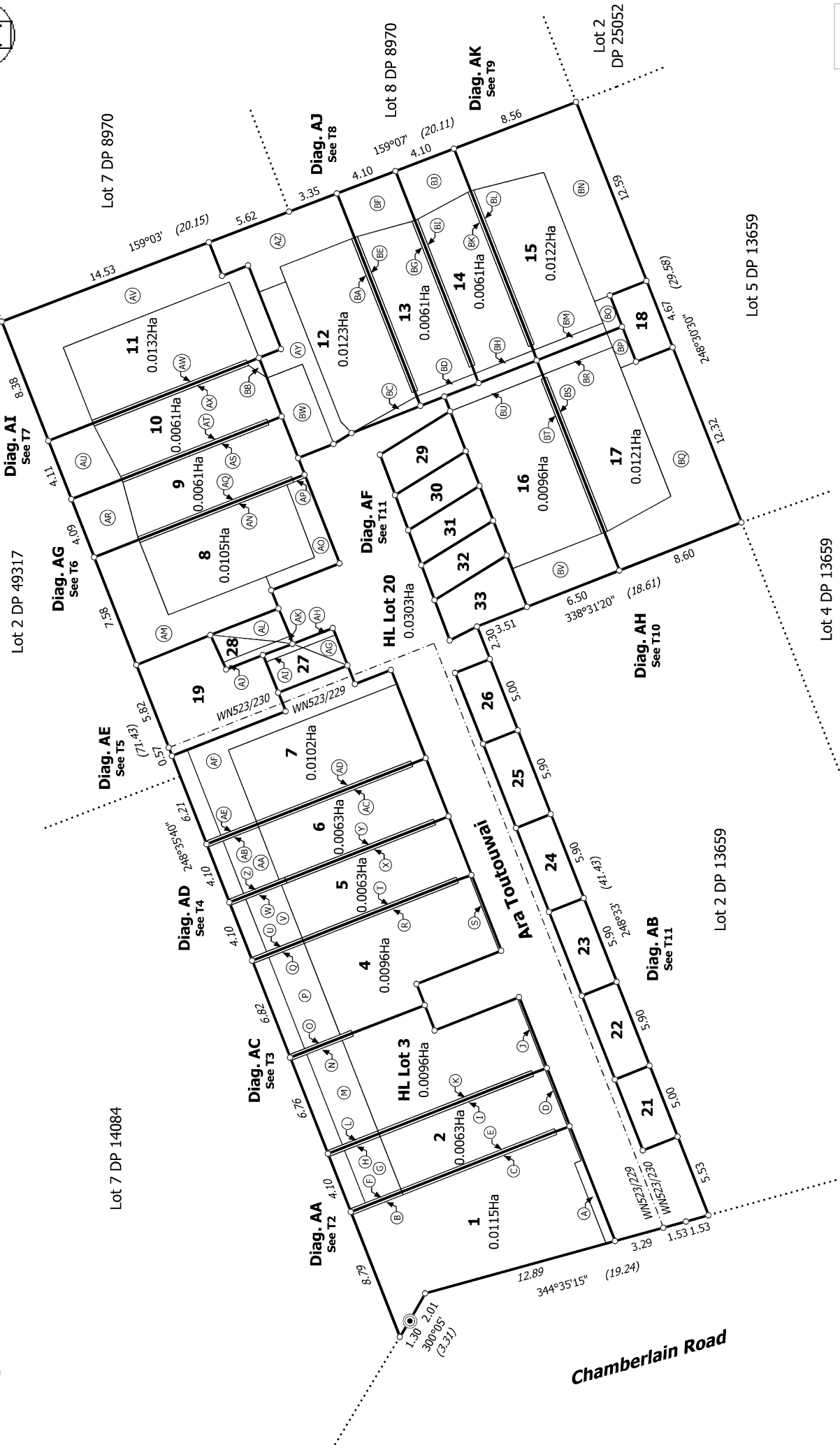
Deposited on: 5/09/2023



Land District: Wellington	Surveyor: Simon John Conway	Record of Survey DP 591957
Digitally Generated Plan	Firm: Spencer Holmes Ltd	Deposited on: 5/09/2023
Generated on: 10/10/2023 07:25:56 Page 50 of 61	Date of Survey: 25/05/2023	



Diag. A



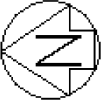
T 1/11

Land District: Wellington  
 Digitally Generated Plan  
 Generated on: 10/10/2023 07:25:00 Page 51 of 61

Lots 1-2, Lots 4-19, Lots 21-33, HL Lot 3 & HL Lot 20 Being the Subdivision of  
 Lots 1 & 3 DP 13659

Surveyor: Simon John Conway  
 Firm: Spencer Holmes Ltd  
 Date of Survey: 25/05/2023

Record of Survey  
 DP 591957  
 Deposited on: 5/09/2023



Diag. AA

Lot 7 DP 14084

HL Lot 3  
0.0096Ha

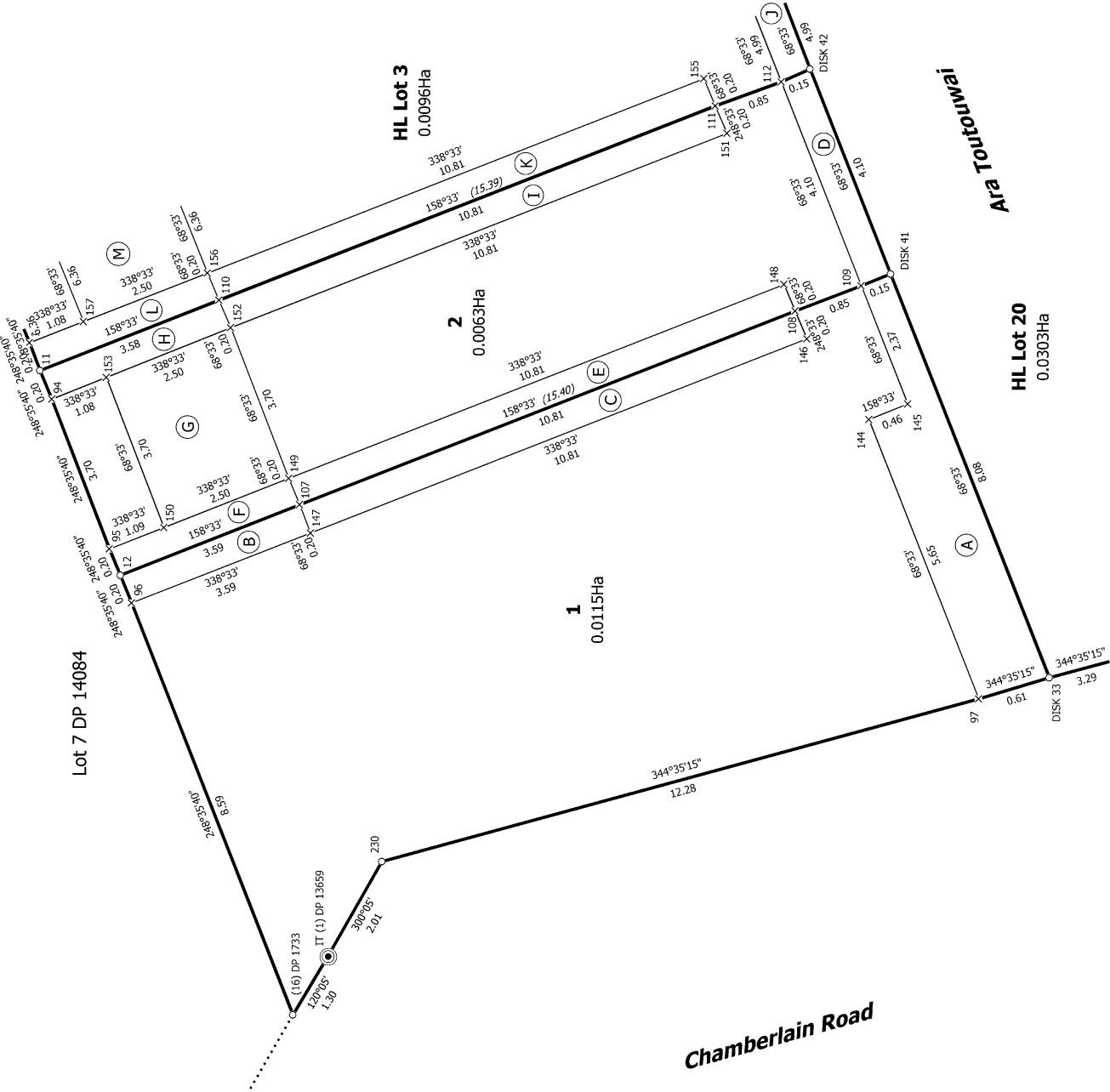
HL Lot 2  
0.0063Ha

HL Lot 20  
0.0303Ha

1  
0.0115Ha

Chamberlain Road

Ara Toutouuwai



T 2/11

Land District: Wellington

Digitally Generated Plan

Generated on: 10/10/2023 07:25am | Page 52 of 61

Lots 1-2, Lots 4-19, Lots 21-33, HL Lot 3 & HL Lot 20 Being the Subdivision of  
Lots 1 & 3 DP 13659

Surveyor: Simon John Conway  
Firm: Spencer Holmes Ltd  
Date of Survey: 25/05/2023

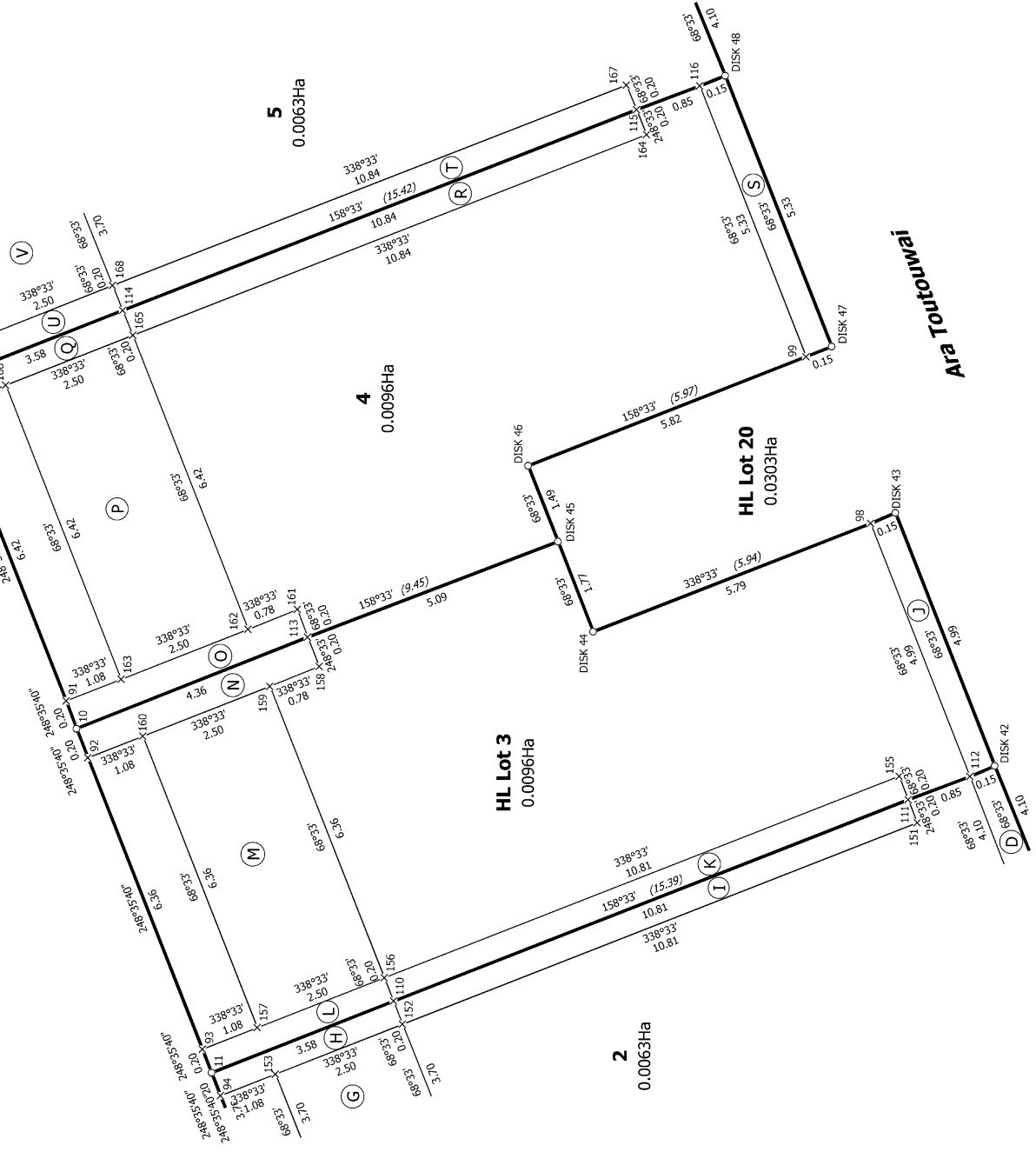
Record of Survey  
DP 591957

Deposited on: 5/09/2023



Diag. AC

Lot 7 DP 14084



**Ara Toutouwai**

T 3/11

Land District: Wellington

**Digitally Generated Plan**

Generated on: 10/10/2023 07:25am | Page 53 of 61

**Lots 1-2, Lots 4-19, Lots 21-33, HL Lot 3 & HL Lot 20 Being the Subdivision of  
Lots 1 & 3 DP 13659**

Surveyor: Simon John Conway  
Firm: Spencer Holmes Ltd  
Date of Survey: 25/05/2023

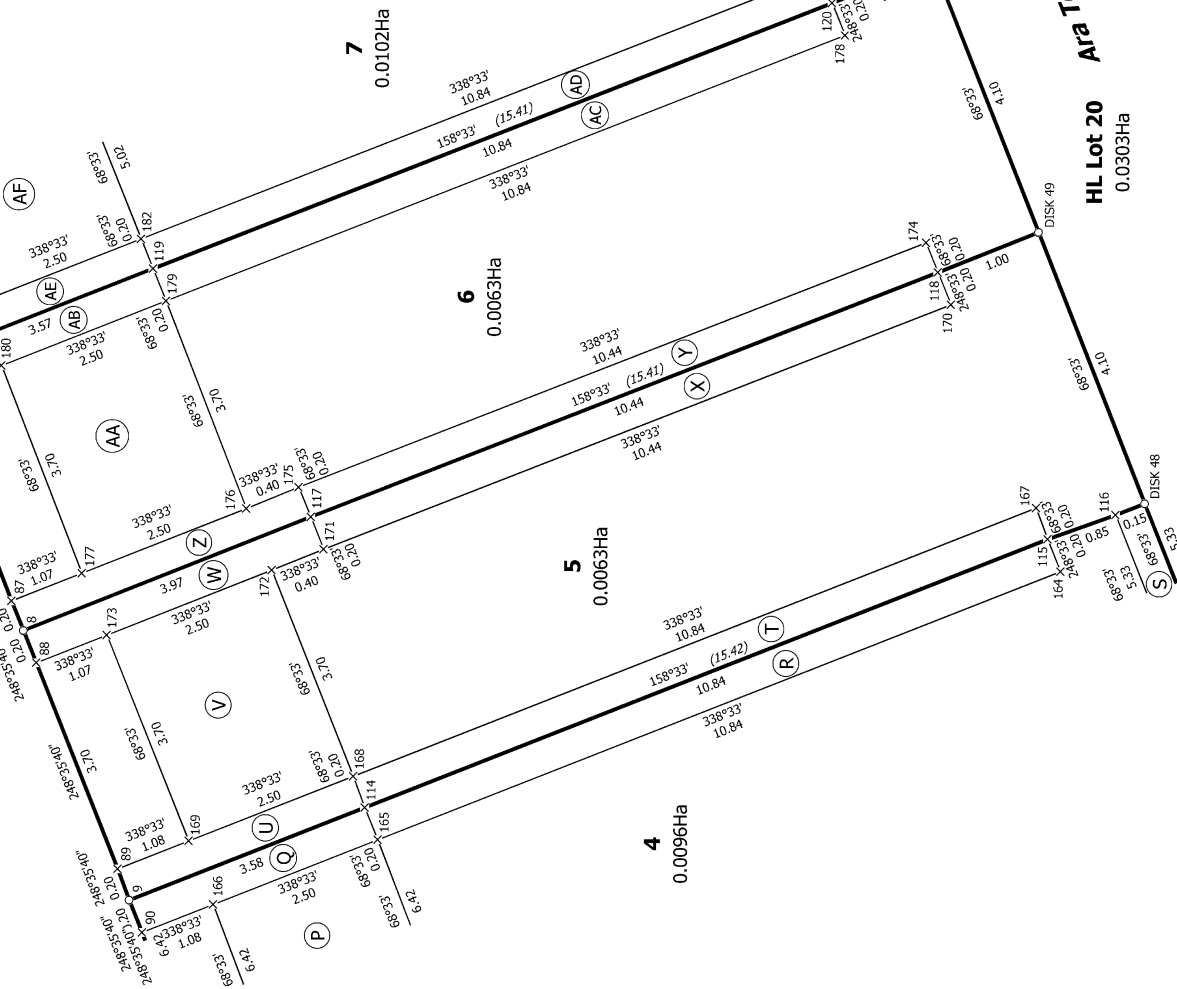
Record of Survey  
DP 591957

Deposited on: 5/09/2023



Diag. AD

Lot 7 DP 14084



T 4/11

Land District: Wellington

Digitally Generated Plan

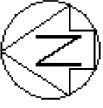
Generated on: 10/10/2023 07:25am Page 54 of 61

Lots 1-2, Lots 4-19, Lots 21-33, HL Lot 3 & HL Lot 20 Being the Subdivision of Lots 1 & 3 DP 13659

Surveyor: Simon John Conway  
Firm: Spencer Holmes Ltd  
Date of Survey: 25/05/2023

Record of Survey  
DP 591957

Deposited on: 5/09/2023



T 5/11

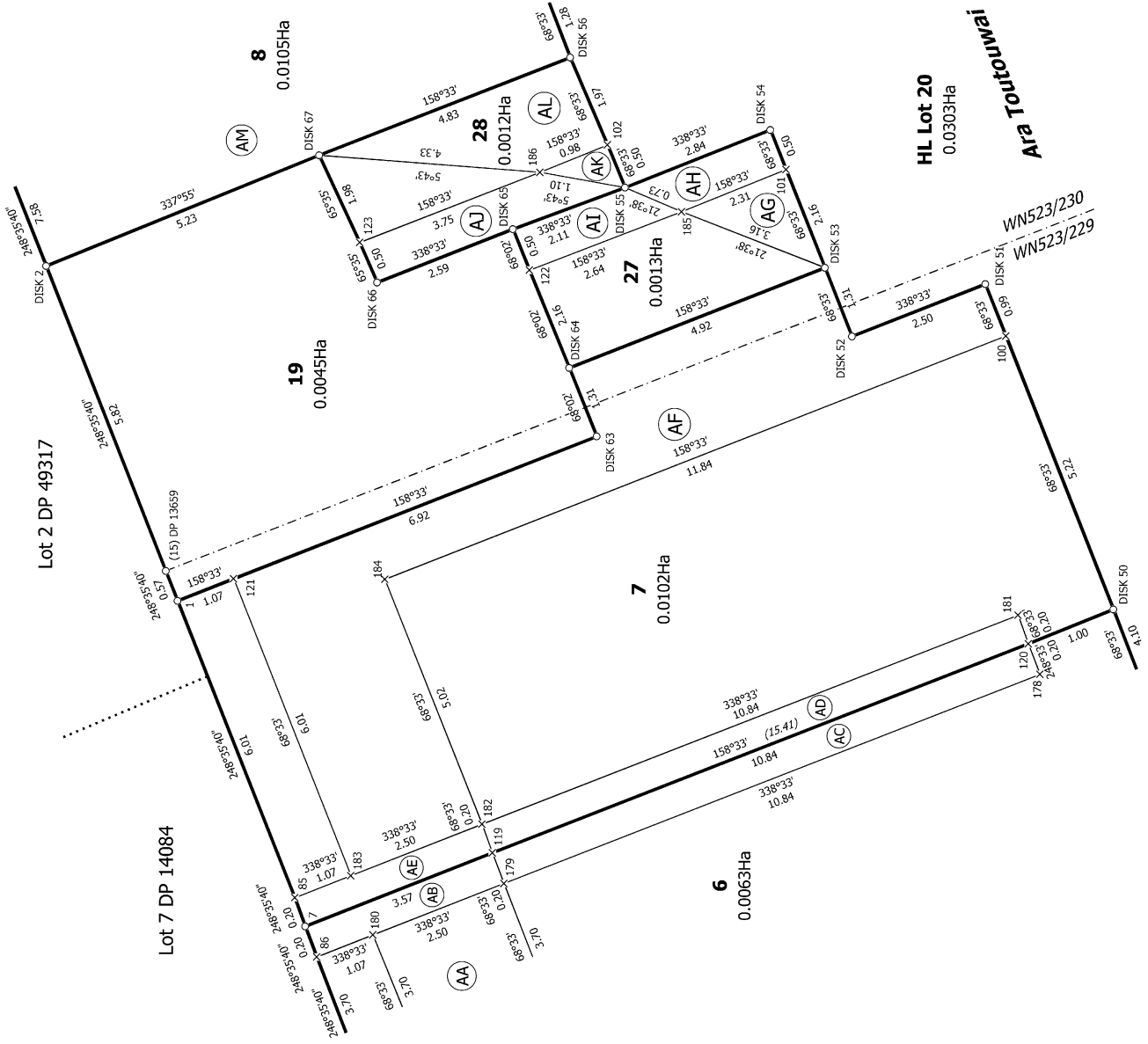
Record of Survey  
DP 591957  
Deposited on: 5/09/2023

Surveyor: Simon John Conway  
Firm: Spencer Holmes Ltd  
Date of Survey: 25/05/2023

Lots 1-2, Lots 4-19, Lots 21-33, HL Lot 3 & HL Lot 20 Being the Subdivision of  
Lots 1 & 3 DP 13659

Land District: Wellington  
**Digitally Generated Plan**  
Generated on: 10/10/2023 07:25am | Page 55 of 61

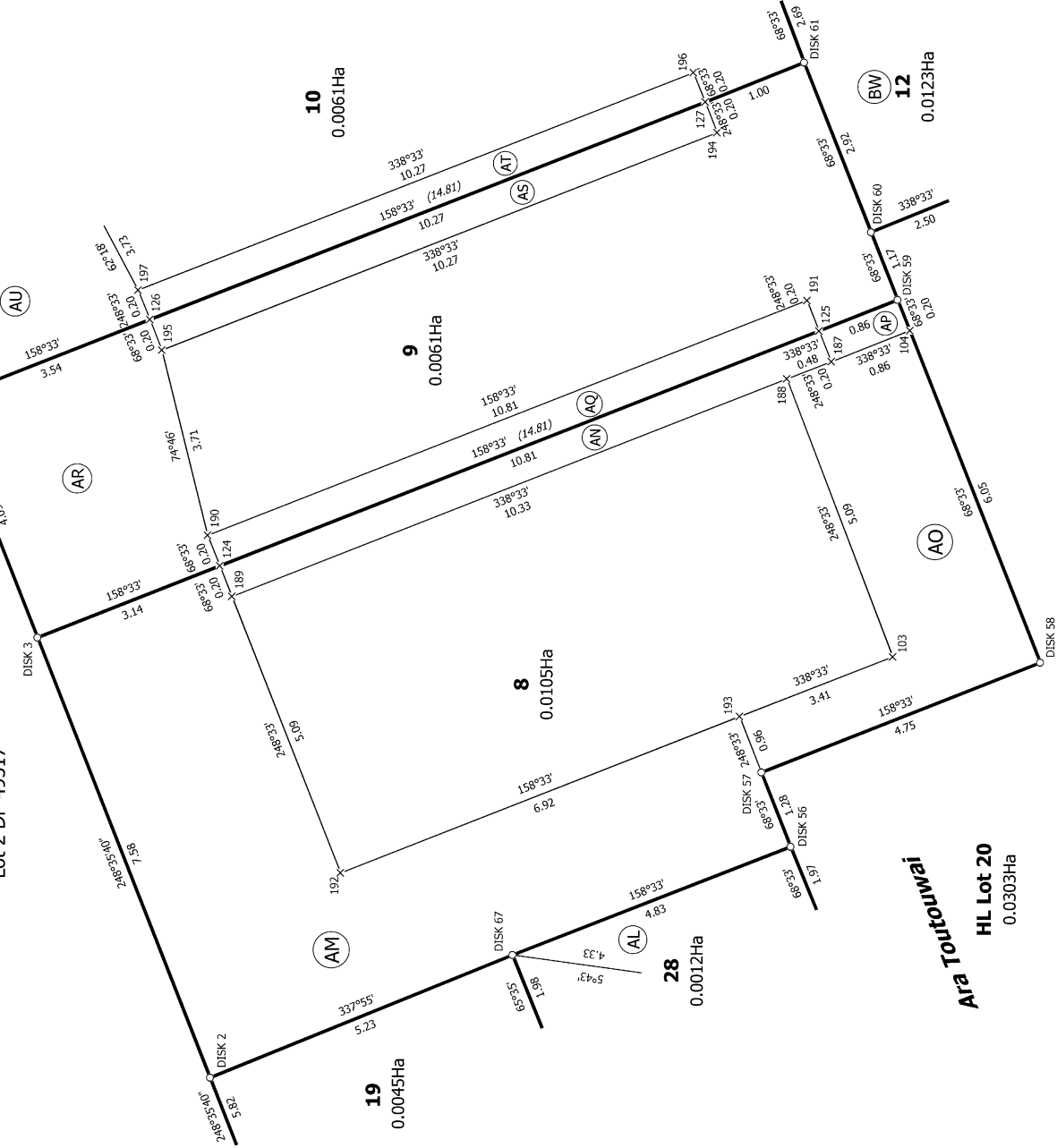
Diag. AE





Diag. AG

Lot 2 DP 49317



**Ara Toutouuwai**  
HL Lot 20  
0.0303Ha

T 6/11

Land District: Wellington

**Digitally Generated Plan**

Generated on: 10/10/2023 07:25am | Page 56 of 61

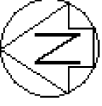
**Lots 1-2, Lots 4-19, Lots 21-33, HL Lot 3 & HL Lot 20 Being the Subdivision of  
Lots 1 & 3 DP 13659**

Surveyor: Simon John Conway  
Firm: Spencer Holmes Ltd  
Date of Survey: 25/05/2023

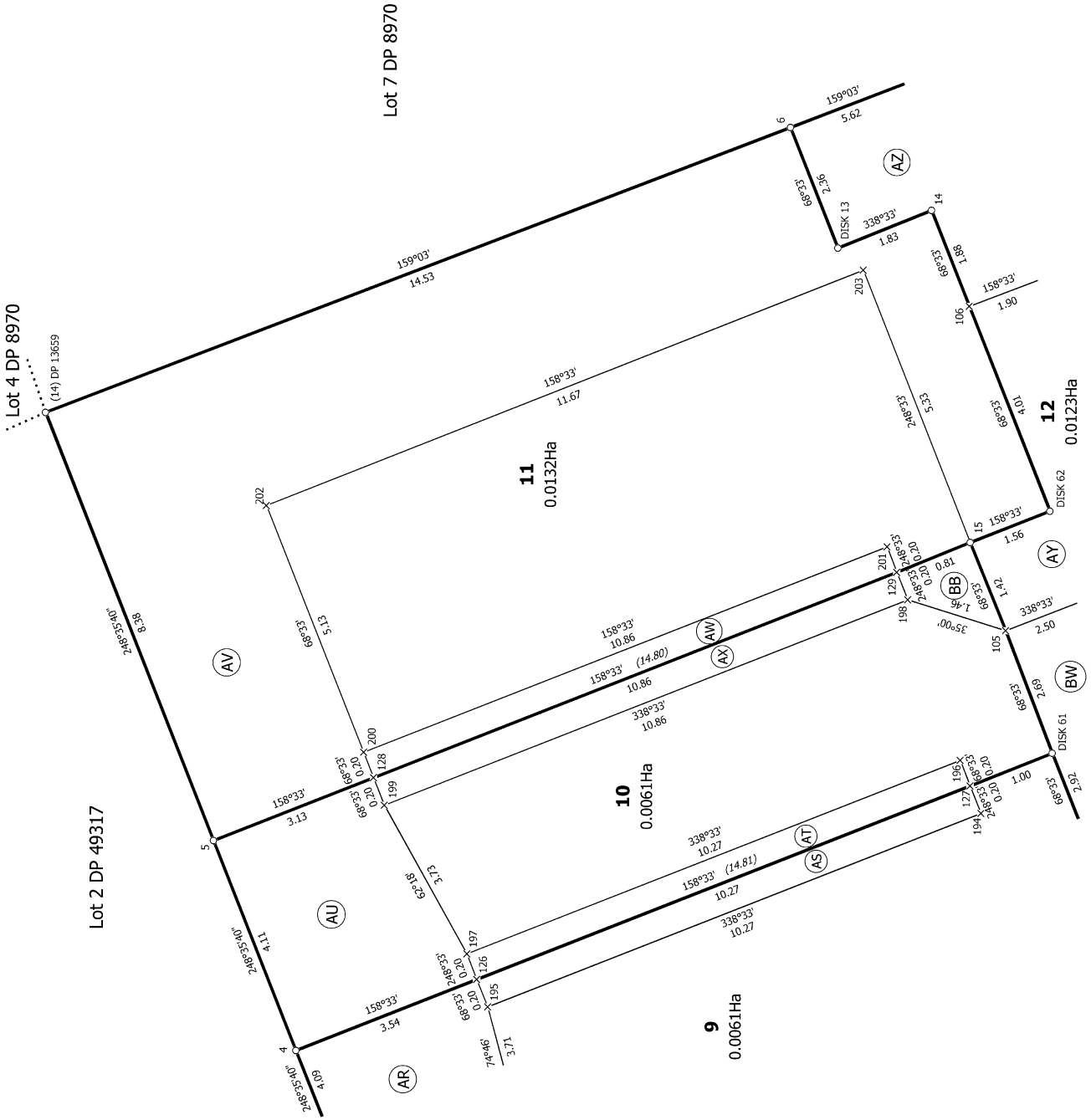
Record of Survey  
DP 591957

Deposited on: 5/09/2023





**Diag. AI**



T 7/11

Land District: Wellington

**Digitally Generated Plan**

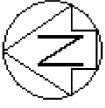
Generated on: 10/10/2023 07:25am | Page 57 of 61

**Lots 1-2, Lots 4-19, Lots 21-33, HL Lot 3 & HL Lot 20 Being the Subdivision of Lots 1 & 3 DP 13659**

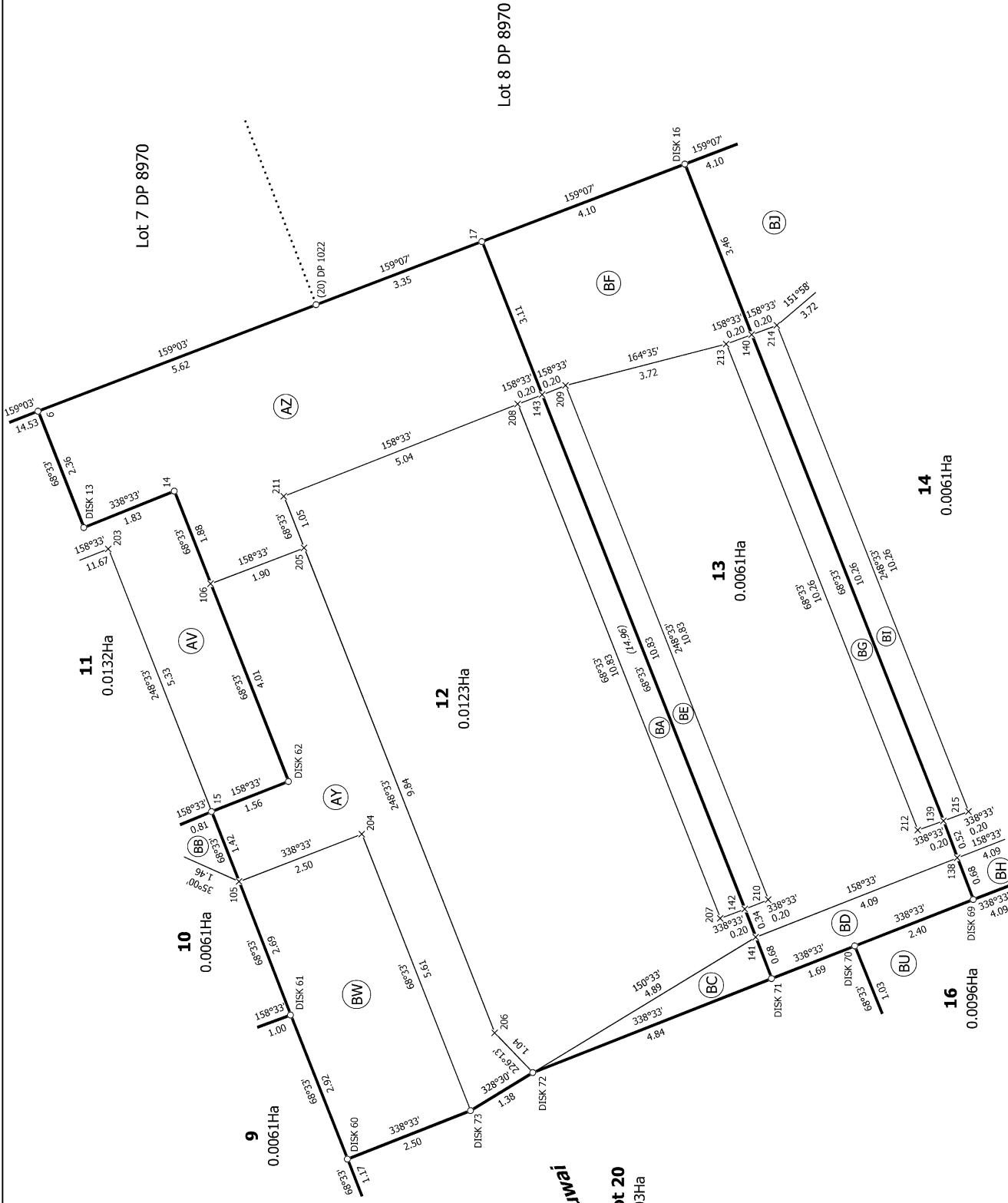
Surveyor: Simon John Conway  
Firm: Spencer Holmes Ltd  
Date of Survey: 25/05/2023

Record of Survey  
DP 591957

Deposited on: 5/09/2023



Diag. AJ



Ara Tautouhawai  
HL Lot 20  
0.0303Ha

T 8/11

Land District: Wellington

Digitally Generated Plan

Generated on: 10/10/2023 07:25:56; Page 58 of 61

Lots 1-2, Lots 4-19, Lots 21-33, HL Lot 3 & HL Lot 20 Being the Subdivision of  
Lots 1 & 3 DP 13659

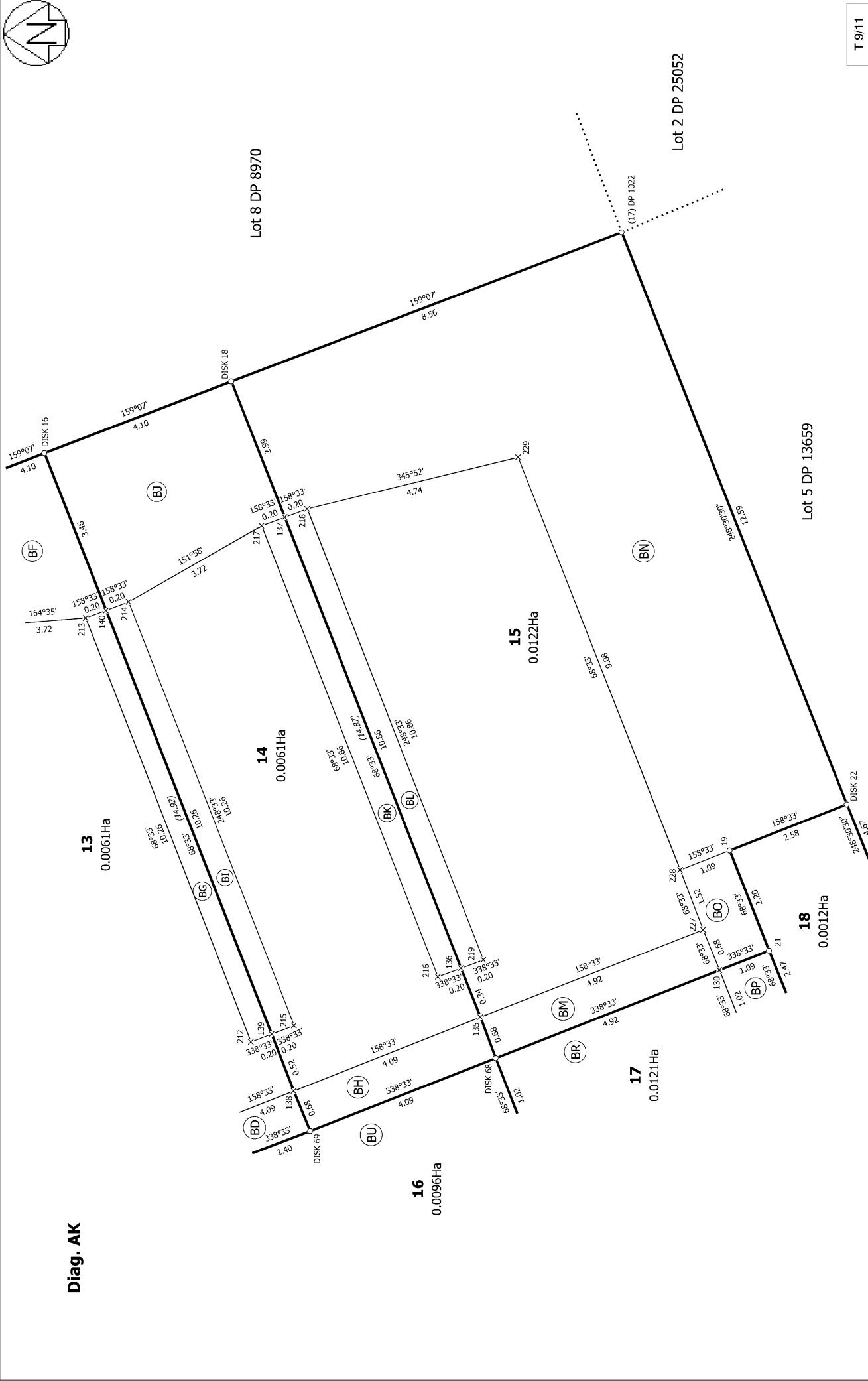
Surveyor: Simon John Conway  
Firm: Spencer Holmes Ltd  
Date of Survey: 25/05/2023

Record of Survey  
DP 591957

Deposited on: 5/09/2023

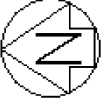


Diag. AK

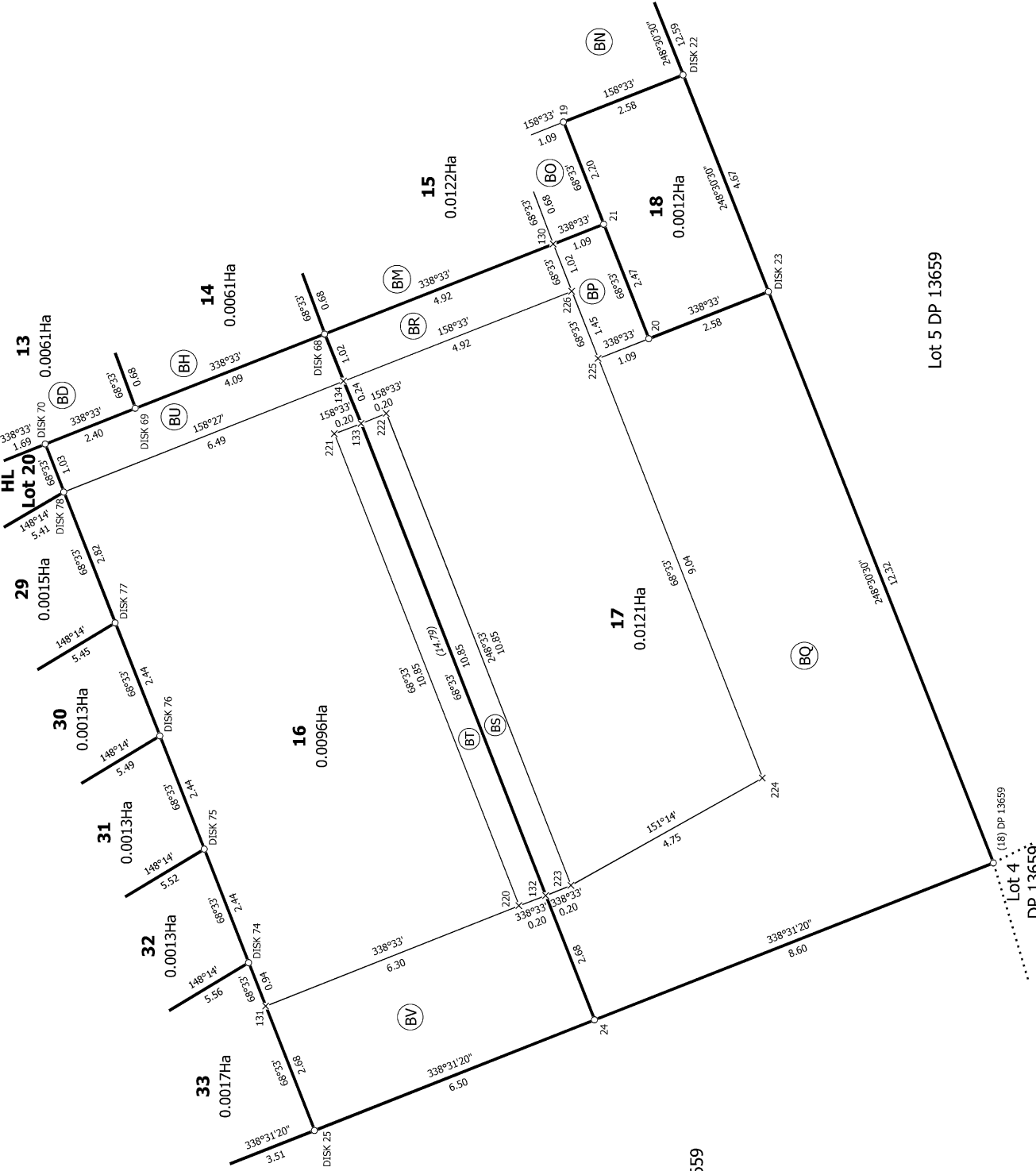


T 9/11

<p>Land District: Wellington</p> <p><b>Digitally Generated Plan</b></p> <p>Generated on: 10/10/2023 07:25:56m   Page 59 of 61</p>	<p><b>Lots 1-2, Lots 4-19, Lots 21-33, HL Lot 3 &amp; HL Lot 20 Being the Subdivision of Lots 1 &amp; 3 DP 13659</b></p>	<p>Surveyor: Simon John Conway          Firm: Spencer Holmes Ltd          Date of Survey: 25/05/2023</p>	<p>Record of Survey          DP 591957          Deposited on: 5/09/2023</p>
---	--	--	---



Diag. AH



Lot 2 DP 13659

Lot 5 DP 13659

T 10/11

Land District: Wellington

Digitally Generated Plan

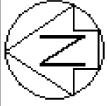
Generated on: 10/10/2023 07:25am | Page 60 of 61

Lots 1-2, Lots 4-19, Lots 21-33, HL Lot 3 & HL Lot 20 Being the Subdivision of  
Lots 1 & 3 DP 13659

Surveyor: Simon John Conway  
Firm: Spencer Holmes Ltd  
Date of Survey: 25/05/2023

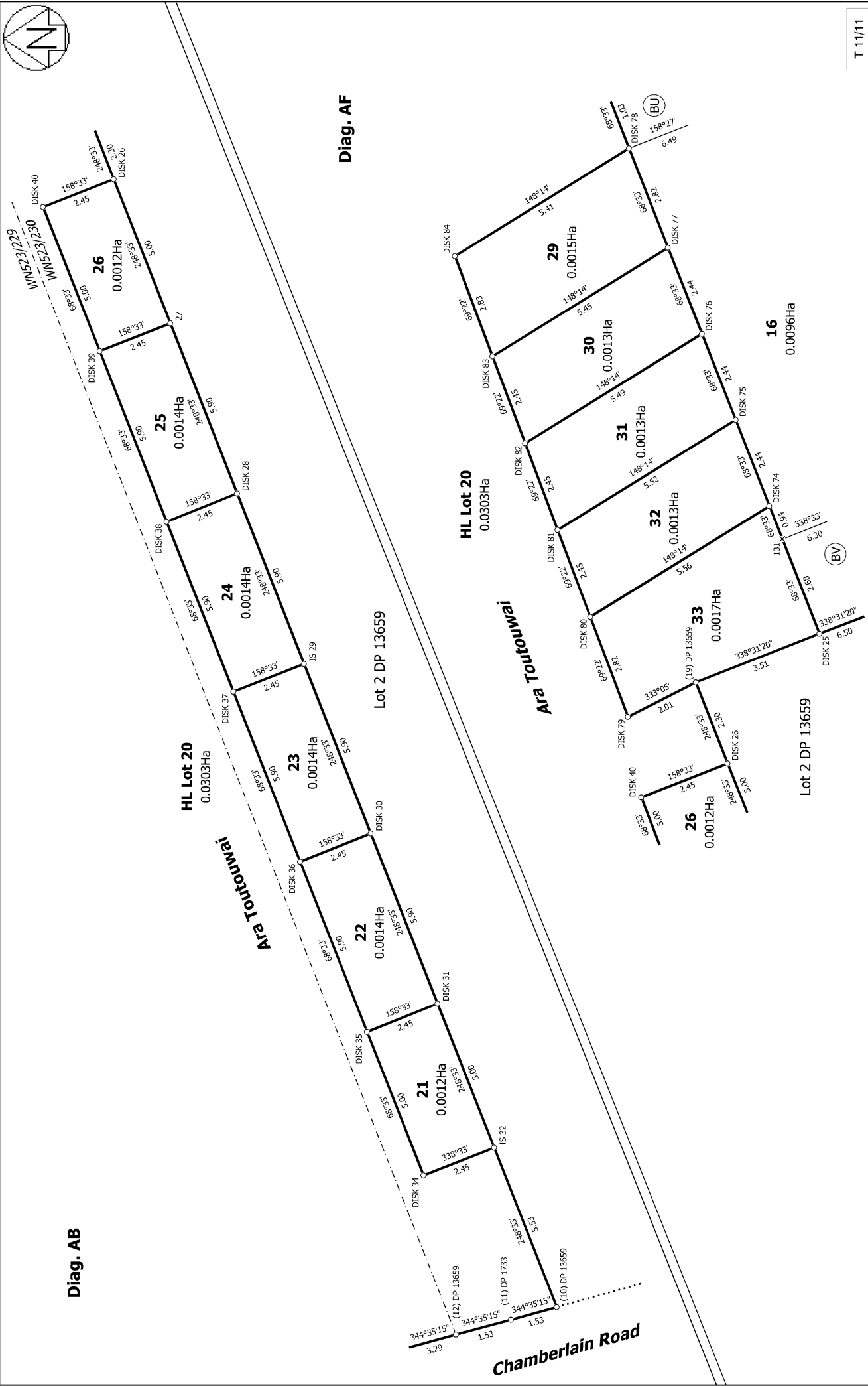
Record of Survey  
DP 591957

Deposited on: 5/09/2023



Diag. AB

Diag. AF



T 11/11

Land District: Wellington

Digitally Generated Plan

Generated on: 10/10/2023 07:25:56 Page 61 of 61

Lots 1-2, Lots 4-19, Lots 21-33, HL Lot 3 & HL Lot 20 Being the Subdivision of Lots 1 & 3 DP 13659

Surveyor: Simon John Conway  
Firm: Spencer Holmes Ltd  
Date of Survey: 25/05/2023

Record of Survey  
DP 591957  
Deposited on: 5/09/2023