



Record of Survey - DP 591677

Survey Number DP 591677
Surveyor Reference 5894 - 57A Hamlin Road, Mt. Wellington
Surveyor Jai Prasad Gautam
Survey Firm Frear Surveyors Ltd
Surveyor Declaration I Jai Prasad Gautam, being a licensed cadastral surveyor, certify that--
(a) this dataset provided by me and its related survey are accurate, correct and in accordance with the Cadastral Survey Act 2002 and Cadastral Survey Rules 2021; and
(b) the survey was undertaken by me or under my personal direction.
Declared on 15 Mar 2024 01:24 PM

Survey Details

Dataset Description Plan of Units on Lots 1-2 DP 46817 & Lot 1 DP 63964
Purpose Standard Unit Plan
Status Deposited **Type** Survey
Land District North Auckland **Survey Class** Class A
Meridional Circuit Mount Eden 2000 **Vertical Datum** None

Survey Dates

Surveyed Date 02/05/2023 **Certified Date** 15/03/2024
Submitted Date 15/03/2024 13:24:28 **Survey Approval Date** 15/03/2024
Deposit Date 14/02/2024

Referenced Surveys

Survey Number	Land District	Bearing Correction
DP 46817	North Auckland	0°00'00"
DP 63964	North Auckland	0°00'00"
DP 356975	North Auckland	0°00'00"
DP 49774	North Auckland	0°00'00"
DP 44873	North Auckland	0°00'00"
DP 19643	North Auckland	0°00'00"
DP 212212	North Auckland	0°00'00"

Territorial Authorities

Auckland Council

Comprised In

RT NA19D/542

Created Parcels

Parcels	Parcel Intent	Area	RT Reference
Accessory Unit 18 Deposited Plan 591677	Accessory Unit		1133793
Accessory Unit 19 Deposited Plan 591677	Accessory Unit		1133795
Accessory Unit 20 Deposited Plan 591677	Accessory Unit		1133797
Accessory Unit 21 Deposited Plan 591677	Accessory Unit		1133799
Accessory Unit 22 Deposited Plan 591677	Accessory Unit		1133801

Record of Survey - DP 591677

Created Parcels

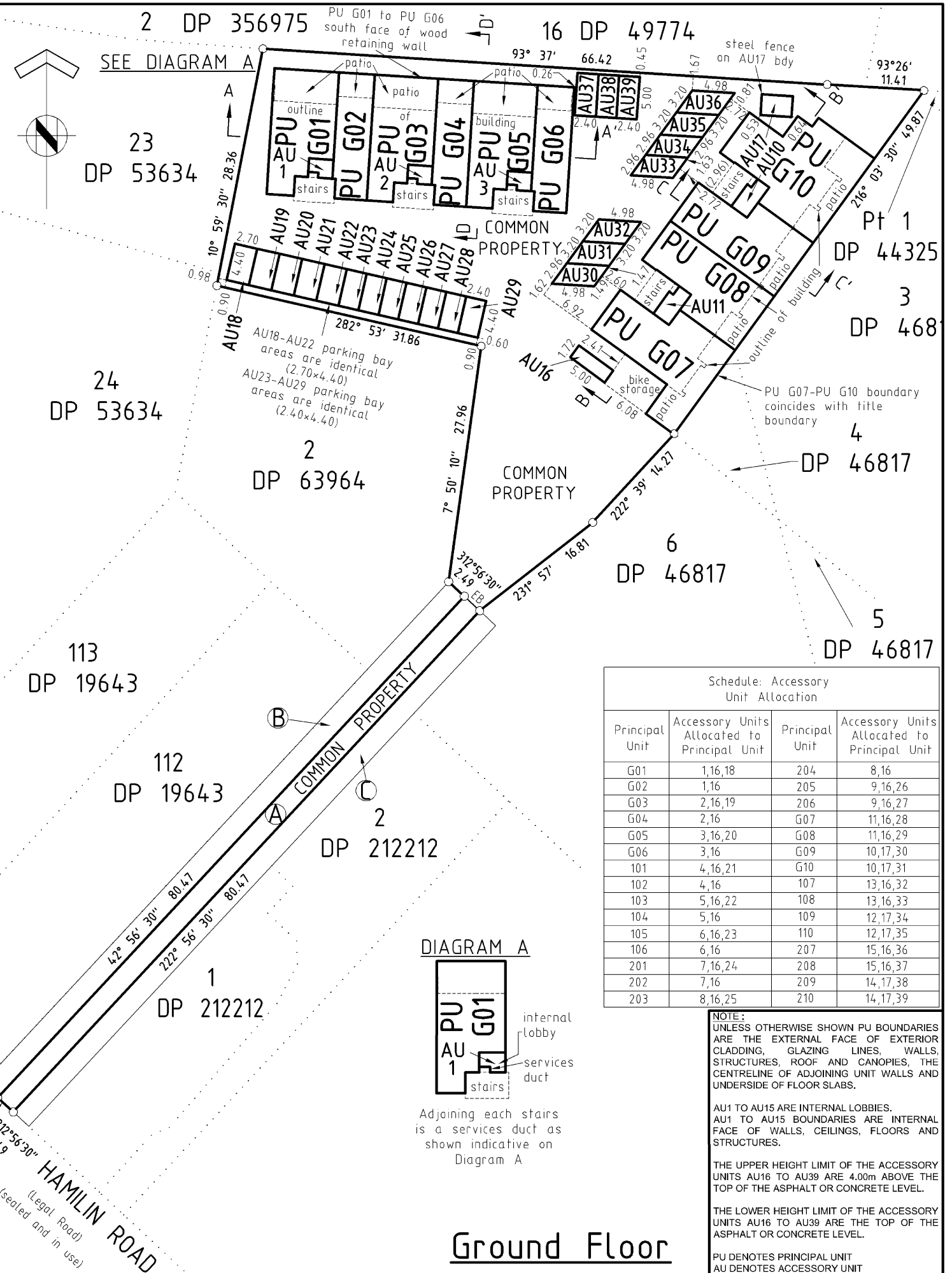
Parcels	Parcel Intent	Area	RT Reference
Accessory Unit 23 Deposited Plan 591677	Accessory Unit		1133803
Accessory Unit 24 Deposited Plan 591677	Accessory Unit		1133805
Accessory Unit 25 Deposited Plan 591677	Accessory Unit		1133807
Accessory Unit 26 Deposited Plan 591677	Accessory Unit		1133809
Accessory Unit 27 Deposited Plan 591677	Accessory Unit		1133810
Accessory Unit 28 Deposited Plan 591677	Accessory Unit		1133811
Accessory Unit 29 Deposited Plan 591677	Accessory Unit		1133812
Accessory Unit 30 Deposited Plan 591677	Accessory Unit		1133813
Accessory Unit 31 Deposited Plan 591677	Accessory Unit		1133814
Accessory Unit 32 Deposited Plan 591677	Accessory Unit		1133815
Accessory Unit 33 Deposited Plan 591677	Accessory Unit		1133816
Accessory Unit 34 Deposited Plan 591677	Accessory Unit		1133817
Accessory Unit 35 Deposited Plan 591677	Accessory Unit		1133818
Accessory Unit 36 Deposited Plan 591677	Accessory Unit		1133819
Accessory Unit 37 Deposited Plan 591677	Accessory Unit		1133820
Accessory Unit 38 Deposited Plan 591677	Accessory Unit		1133821
Accessory Unit 39 Deposited Plan 591677	Accessory Unit		1133822
Principal Unit G01 Deposited Plan 591677	Principal Unit		1133793
Principal Unit G02 Deposited Plan 591677	Principal Unit		1133794
Principal Unit G03 Deposited Plan 591677	Principal Unit		1133795
Principal Unit G04 Deposited Plan 591677	Principal Unit		1133796
Principal Unit G05 Deposited Plan 591677	Principal Unit		1133797
Principal Unit G06 Deposited Plan 591677	Principal Unit		1133798
Principal Unit 101 Deposited Plan 591677	Principal Unit		1133799
Principal Unit 102 Deposited Plan 591677	Principal Unit		1133800
Principal Unit 103 Deposited Plan 591677	Principal Unit		1133801
Principal Unit 104 Deposited Plan 591677	Principal Unit		1133802
Principal Unit 105 Deposited Plan 591677	Principal Unit		1133803
Principal Unit 106 Deposited Plan 591677	Principal Unit		1133804
Principal Unit 201 Deposited Plan 591677	Principal Unit		1133805
Principal Unit 202 Deposited Plan 591677	Principal Unit		1133806
Principal Unit 203 Deposited Plan 591677	Principal Unit		1133807
Principal Unit 204 Deposited Plan 591677	Principal Unit		1133808
Principal Unit 205 Deposited Plan 591677	Principal Unit		1133809
Principal Unit 206 Deposited Plan 591677	Principal Unit		1133810
Principal Unit G07 Deposited Plan 591677	Principal Unit		1133811
Principal Unit G08 Deposited Plan 591677	Principal Unit		1133812
Principal Unit G09 Deposited Plan 591677	Principal Unit		1133813
Principal Unit G10 Deposited Plan 591677	Principal Unit		1133814
Principal Unit 107 Deposited Plan 591677	Principal Unit		1133815
Principal Unit 108 Deposited Plan 591677	Principal Unit		1133816
Principal Unit 109 Deposited Plan 591677	Principal Unit		1133817
Principal Unit 110 Deposited Plan 591677	Principal Unit		1133818
Principal Unit 207 Deposited Plan 591677	Principal Unit		1133819



Record of Survey - DP 591677

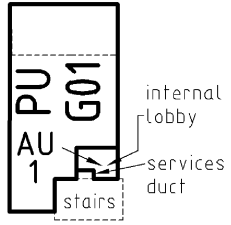
Created Parcels

Parcels	Parcel Intent	Area	RT Reference
Principal Unit 208 Deposited Plan 591677	Principal Unit		1133820
Principal Unit 209 Deposited Plan 591677	Principal Unit		1133821
Principal Unit 210 Deposited Plan 591677	Principal Unit		1133822
Accessory Unit 1 Deposited Plan 591677	Accessory Unit		Multiple
Accessory Unit 2 Deposited Plan 591677	Accessory Unit		Multiple
Accessory Unit 3 Deposited Plan 591677	Accessory Unit		Multiple
Accessory Unit 4 Deposited Plan 591677	Accessory Unit		Multiple
Accessory Unit 5 Deposited Plan 591677	Accessory Unit		Multiple
Accessory Unit 6 Deposited Plan 591677	Accessory Unit		Multiple
Accessory Unit 7 Deposited Plan 591677	Accessory Unit		Multiple
Accessory Unit 8 Deposited Plan 591677	Accessory Unit		Multiple
Accessory Unit 9 Deposited Plan 591677	Accessory Unit		Multiple
Accessory Unit 10 Deposited Plan 591677	Accessory Unit		Multiple
Accessory Unit 11 Deposited Plan 591677	Accessory Unit		Multiple
Accessory Unit 12 Deposited Plan 591677	Accessory Unit		Multiple
Accessory Unit 13 Deposited Plan 591677	Accessory Unit		Multiple
Accessory Unit 14 Deposited Plan 591677	Accessory Unit		Multiple
Accessory Unit 15 Deposited Plan 591677	Accessory Unit		Multiple
Accessory Unit 16 Deposited Plan 591677	Accessory Unit		Multiple
Accessory Unit 17 Deposited Plan 591677	Accessory Unit		Multiple
Total Area		<hr/> 0.0000 Ha	



SEE DIAGRAM A

DIAGRAM A



Adjoining each stairs is a services duct as shown indicative on Diagram A

Schedule: Accessory Unit Allocation

Principal Unit	Accessory Units Allocated to Principal Unit	Principal Unit	Accessory Units Allocated to Principal Unit
G01	1,16,18	204	8,16
G02	1,16	205	9,16,26
G03	2,16,19	206	9,16,27
G04	2,16	G07	11,16,28
G05	3,16,20	G08	11,16,29
G06	3,16	G09	10,17,30
101	4,16,21	G10	10,17,31
102	4,16	107	13,16,32
103	5,16,22	108	13,16,33
104	5,16	109	12,17,34
105	6,16,23	110	12,17,35
106	6,16	207	15,16,36
201	7,16,24	208	15,16,37
202	7,16	209	14,17,38
203	8,16,25	210	14,17,39

NOTE:
UNLESS OTHERWISE SHOWN PU BOUNDARIES ARE THE EXTERNAL FACE OF EXTERIOR CLADDING, GLAZING LINES, WALLS, STRUCTURES, ROOF AND CANOPIES, THE CENTRELINE OF ADJOINING UNIT WALLS AND UNDERSIDE OF FLOOR SLABS.

AU1 TO AU15 ARE INTERNAL LOBBIES.
AU1 TO AU15 BOUNDARIES ARE INTERNAL FACE OF WALLS, CEILINGS, FLOORS AND STRUCTURES.

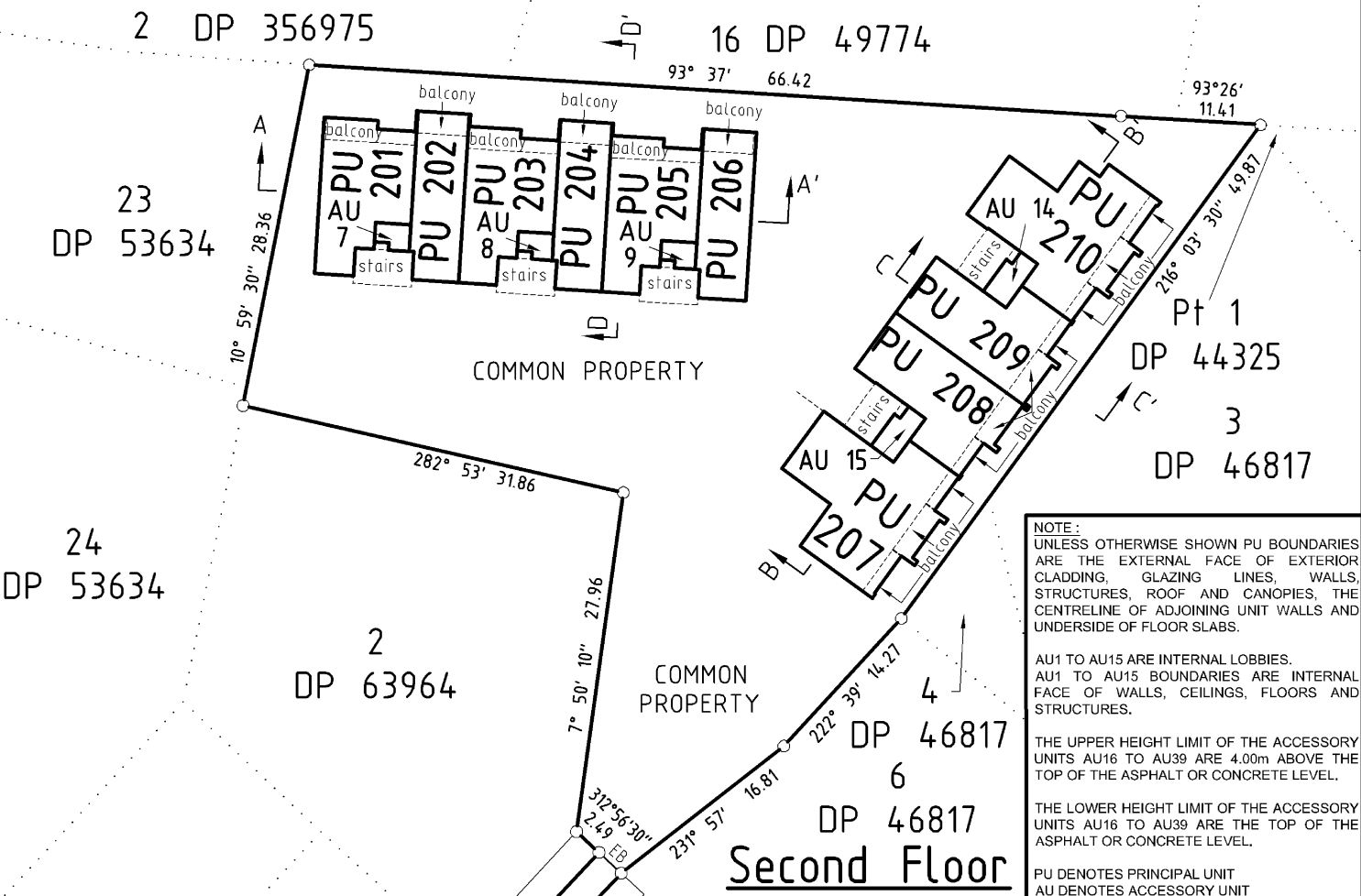
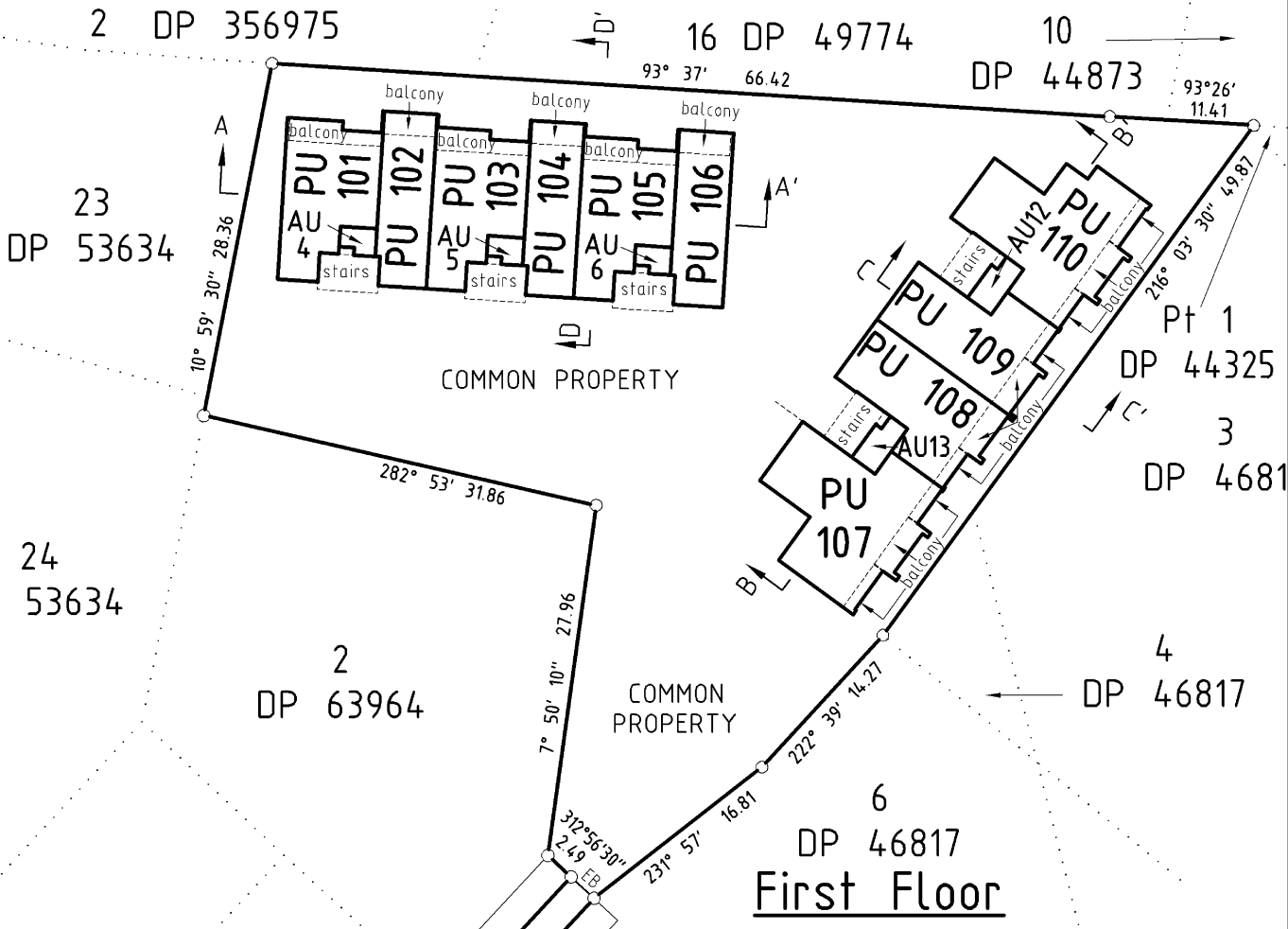
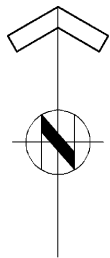
THE UPPER HEIGHT LIMIT OF THE ACCESSORY UNITS AU16 TO AU39 ARE 4.00m ABOVE THE TOP OF THE ASPHALT OR CONCRETE LEVEL.

THE LOWER HEIGHT LIMIT OF THE ACCESSORY UNITS AU16 TO AU39 ARE THE TOP OF THE ASPHALT OR CONCRETE LEVEL.

PU DENOTES PRINCIPAL UNIT
AU DENOTES ACCESSORY UNIT

Ground Floor

PROJECT 57A Hamlin Road Mt. Wellington Lots 1-2 DP 46817 & Lot 1 DP 63964 Total Area = 2982m ² RT NA19D/542	DRAWING TITLE Plan of Units on Lots 1-2 DP 46817 & Lot 1 DP 63964	ORIGINAL SIZE	DATE ISSUED	SHEET NO
		A3	25/05/2023	1 of 4
		ORIGINAL SCALE	REVISION NO	CAD REFERENCE
		1:400	9	5894-UT Rev. 9
		DP 591677		



NOTE:
UNLESS OTHERWISE SHOWN PU BOUNDARIES ARE THE EXTERNAL FACE OF EXTERIOR CLADDING, GLAZING LINES, WALLS, STRUCTURES, ROOF AND CANOPIES, THE CENTRELINE OF ADJOINING UNIT WALLS AND UNDERSIDE OF FLOOR SLABS.

AU1 TO AU15 ARE INTERNAL LOBBIES.
AU1 TO AU15 BOUNDARIES ARE INTERNAL FACE OF WALLS, CEILINGS, FLOORS AND STRUCTURES.

THE UPPER HEIGHT LIMIT OF THE ACCESSORY UNITS AU16 TO AU39 ARE 4.00m ABOVE THE TOP OF THE ASPHALT OR CONCRETE LEVEL.

THE LOWER HEIGHT LIMIT OF THE ACCESSORY UNITS AU16 TO AU39 ARE THE TOP OF THE ASPHALT OR CONCRETE LEVEL.

PU DENOTES PRINCIPAL UNIT
AU DENOTES ACCESSORY UNIT

PROJECT 57A Hamlin Road Mt. Wellington Lots 1-2 DP 46817 & Lot 1 DP 63964 Total Area = 2982m ² RT NA19D/542	DRAWING TITLE Plan of Units on Lots 1-2 DP 46817 & Lot 1 DP 63964	ORIGINAL SIZE	DATE ISSUED	SHEET NO
		A3	25/05/2023	2 of 4
		ORIGINAL SCALE	REVISION NO	CAD REFERENCE
		1:400	9	5894-UT Rev. 9
		DP 591677		

NOTE:
UNLESS OTHERWISE SHOWN PU BOUNDARIES ARE THE EXTERNAL FACE OF EXTERIOR CLADDING, GLAZING LINES, WALLS, STRUCTURES, ROOF AND CANOPIES, THE CENTRELINE OF ADJOINING UNIT WALLS AND THE UNDERSIDE OF FLOOR SLABS.

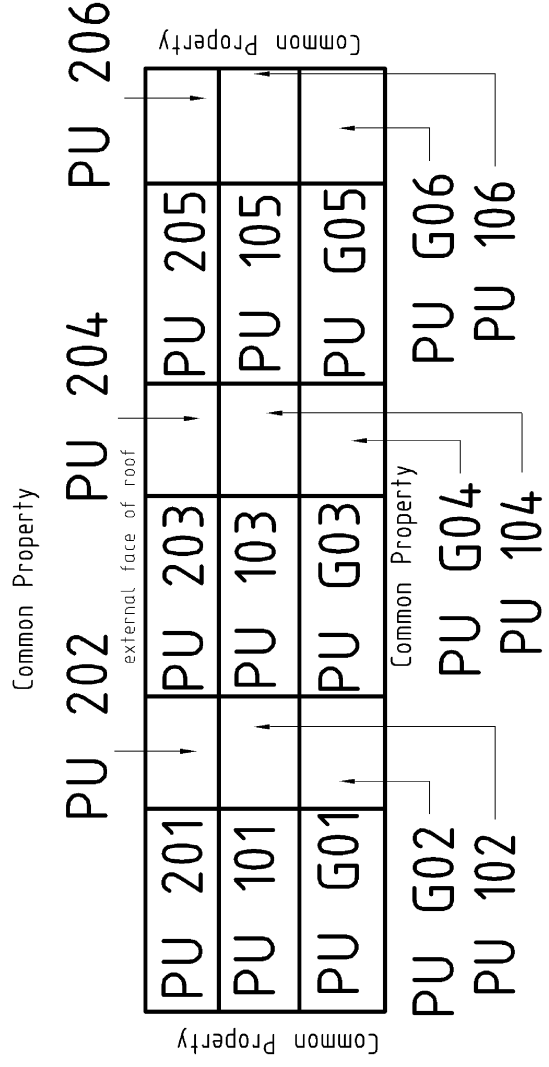
PU DENOTES PRINCIPAL UNIT
AU DENOTES ACCESSORY UNIT

PROJECT
**57A Hamlin Road
Mt. Wellington**
Lots 1-2 DP 46817 &
Lot 1 DP 63964
Total Area = 2982m²
RT NA19D/542

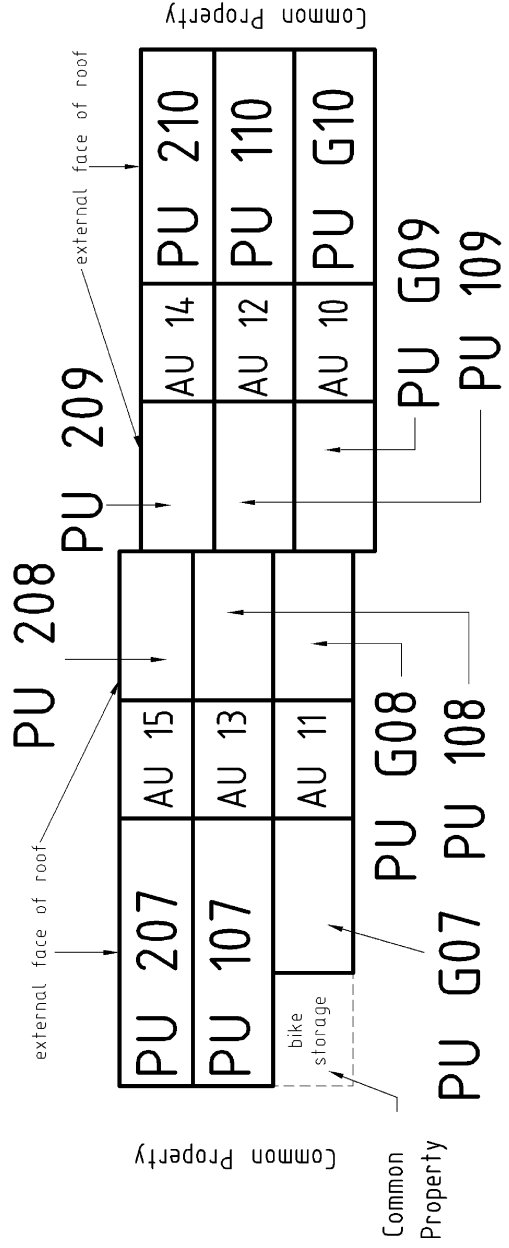
DRAWING TITLE
**Plan of Units on
Lots 1-2 DP 46817
& Lot 1 DP 63964**

ORIGINAL SCALE	ORIGINAL SIZE	REVISION NO	9
1:200	A3		
DATE ISSUED	25/05/2023	SHEET NO	3 of 4
CAD REFERENCE	5894-UT Rev. 9	JOB NO	5894

DP 591677



X-Section A-A'
Scale: 1:200



X-Section B-B'
Scale: 1:200

NOTE:
UNLESS OTHERWISE SHOWN PU BOUNDARIES ARE THE EXTERNAL FACE OF EXTERIOR CLADDING, GLAZING LINES, WALLS, STRUCTURES, ROOF AND CANOPIES, THE CENTRELINE OF ADJOINING UNIT WALLS AND THE UNDERSIDE OF FLOOR SLABS.

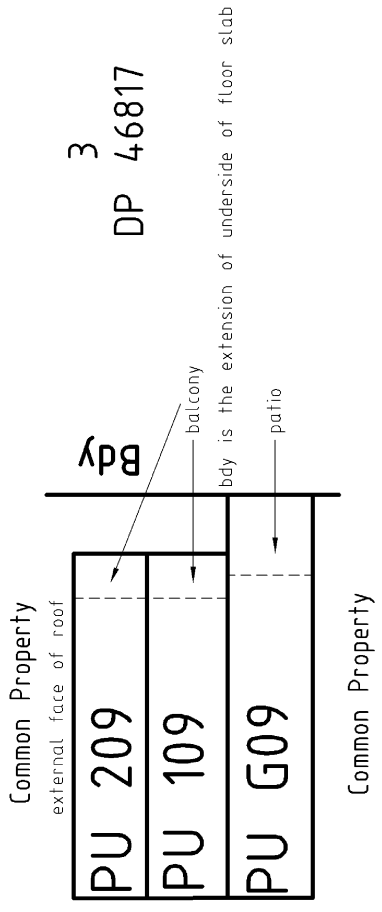
PU DENOTES PRINCIPAL UNIT
AU DENOTES ACCESSORY UNIT

PROJECT
**57A Hamlin Road
Mt. Wellington**
Lots 1-2 DP 46817 &
Lot 1 DP 63964
Total Area = 2982m²
RT NA19D/542

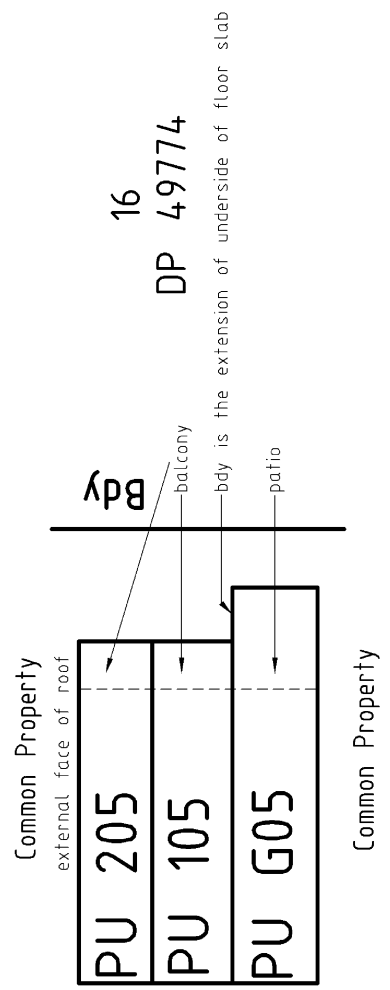
DRAWING TITLE
**Plan of Units on
Lots 1-2 DP 46817
& Lot 1 DP 63964**

ORIGINAL SCALE	ORIGINAL SIZE	REVISION NO	9
1:200	A3		
DATE ISSUED	25/05/2023	SHEET NO	4 of 4
CAD REFERENCE	5894-UT Rev. 9	JOB NO	5894

DP 591677



X-Section C-C'
Scale: 1:200



X-Section D-D'
Scale: 1:200

EASEMENT MEMORANDUM

PLAN NUMBER: DP 591677
LAND REGISTRATION DISTRICT: NORTH AUCKLAND
TERRITORIAL AUTHORITY: AUCKLAND COUNCIL

Schedule of Existing Easements (Pursuant to s243 Resource Management Act 1991)			
Purpose	Shown	Burdened Land (Servient Tenement)	Created By
Right of Way.	A	Lot 1 DP 46817	T. 588476 & T.665080

Schedule of Existing Appurtenant Easements (Pursuant to s243 Resource Management Act 1991)			
Purpose	Shown	Burdened Land (Servient Tenement)	Creating Document Reference
Right of Way.	B	Lot 2 DP 63964	A 511657 & T. 588476
	C	Lot 6 DP 46817	T. 588476 & T.665080