



Record of Survey - DP 591355

Survey Number	DP 591355
Surveyor Reference	12774 Oydick Family Trust
Surveyor	Andrew John Marshall
Survey Firm	Staig and Smith Limited
Surveyor Declaration	I Andrew John Marshall, being a licensed cadastral surveyor, certify that-- (a) this dataset provided by me and its related survey are accurate, correct and in accordance with the Cadastral Survey Act 2002 and Cadastral Survey Rules 2021; and (b) the survey was undertaken by me or under my personal direction. Declared on 15 Mar 2024 07:07 AM

Survey Details

Dataset Description	Lot 1 being Part RS 26		
Purpose	LT Subdivision		
Status	Deposited	Type	Survey
Land District	Canterbury	Survey Class	Class A
Meridional Circuit	Mount Pleasant 2000	Vertical Datum	None

Survey Dates

Surveyed Date	08/05/2023	Certified Date	15/03/2024
Submitted Date	15/03/2024 07:07:51	Survey Approval Date	18/03/2024
Deposit Date	17/04/2024		

Referenced Surveys

Survey Number	Land District	Bearing Correction
SO 19351	Canterbury	0°00'00"
SO 804	Canterbury	0°00'00"
SO 804	Gisborne	0°00'00"
SO 19508	Canterbury	0°00'00"
A 6416	Canterbury	-0°00'33"
DP 6117	Canterbury	0°00'00"
DP 69036	Canterbury	0°00'00"
SO 416561	Canterbury	0°00'00"
DP 473692	Canterbury	0°00'00"

Territorial Authorities

Christchurch City

Comprised In

RT CB20K/829

Created Parcels

Parcels	Parcel Intent	Area	RT Reference
Lot 1 Deposited Plan 591355	Fee Simple Title	0.0556 Ha	1132775
Area A Deposited Plan 591355	Easement		
Total Area		0.0556 Ha	

Mark and Vector

Survey Number DP 591355

Meridional Circuit Mount Pleasant 2000

From	To	Code	Bearing	Adpt Surv	Bearing Correction	Distance	Adpt Surv	Class
CCC BM 317	NAIL 9 DP 473692	ob0	85°38'00" M			164.24 M		
NAIL 9 DP 473692	MN 4 DP 591355	ob2	172°32'30" M			37.66 M		
MN 4 DP 591355	NAIL 3 DP 591355	ob6	317°16'30" M			27.18 M		
NAIL 3 DP 591355	IS 2 DP 591355	ob11	358°00'00" M			32.89 M		
IS 2 DP 591355	IT 1 DP 591355	ob14	29°04'30" M			22.95 M		
IT 1 DP 591355	NAIL 9 DP 473692	ob15	174°17'30" M			35.73 M		
IT 1 DP 591355	MN 5 DP 591355	ob16	79°32'30" M			65.14 M		
MN 4 DP 591355	IT IX SO 19351	ob7	264°21'30" M			48.35 M		
MN 4 DP 591355	NAIL 1 SO 479618	ob8	184°28'00" M			92.92 M		
IT 1 DP 591355	MA 8 DP 473692	ob17	163°08'00" M			10.44 M		
MA 8 DP 473692	NAIL 9 DP 473692	ob23	178°49'30" M			25.56 M		
NAIL 9 DP 473692	RN V SO 416561	ob3	89°21'30" M			20.09 M		
IT 1 DP 591355	MN 4 DP 591355	ob18	173°23'30" M			73.38 M		
MN 5 DP 591355	NAIL 1 SO 479618	ob21	199°30'55" M			188.16 M		
CCC BM 317	NAIL 1 SO 479618	ob1	126°02'55" M			199.63 M		
NAIL 9 DP 473692	NAIL 1 SO 479618	ob4	181°02'10" M			129.99 M		
NAIL 9 DP 473692	MN 5 DP 591355	ob5	51°56'20" M			76.84 M		
RN V SO 416561	IT IV SO 19508	ob29	250°29'00" A	SO 416561	0°00'00"	22.78 A	SO 416561	
MA 8 DP 473692	SS 85 SO 804	ob24	251°25'00" A	DP 473692	0°00'00"	60.89 A	DP 473692	
SS 85 SO 804	I DP 69036	ob25	84°54'00" A	DP 69036	0°00'00"	14.24 A	DP 69036	
IT IX SO 19351	PEG XXVIII DP 69036	ob22	7°48'00" A	DP 69036	0°00'00"	8.18 A	DP 69036	
PEG XXVIII DP 69036	Peg (1) A 6416	ob26	357°19'30" A	DP 69036	0°00'00"	12.43 C		
Peg (1) A 6416	I DP 69036	ob28	357°19'30" A	DP 69036	0°00'00"	28.97 C		
IT III SO 19351	IT IX SO 19351	ob32	269°01'40" A	DP 69036	0°00'00"	42.10 A	DP 69036	
IT IV SO 19508	unmk (1) A 6416	ob31	359°37'00" A	SO 19508	0°00'00"	29.10 C		
unmk (1) A 6416	IP I DP 7044	ob51	359°37'00" A	SO 19508	0°00'00"	6.92 A	A 6416	
IP I DP 7044	UNMK A 6416	ob35	248°18'00" A	DP 69036	0°00'00"	26.31 A	A 6416	
UNMK A 6416	SS 85 SO 804	ob36	248°18'00" A	DP 69036	0°00'00"	34.64 A	A 6416	
unmk (1) A 6416	IS 12 DP 591355	ob52	269°37'00" A	A 6416	0°02'00"	4.02 A	A 6416	
IT III SO 19351	PEG XXXI DP 69036	ob33	332°59'00" A	DP 69036	0°00'00"	8.97 A	DP 69036	

Mark and Vector

Survey Number DP 591355

Meridional Circuit Mount Pleasant 2000

From	To	Code	Bearing	Adpt Surv	Bearing Correction	Distance	Adpt Surv	Class
I DP 69036	PEG XVI DP 5588	ob27	357°19'30"	A DP 69036	0°00'00"	1.21 A	DP 6117	
PEG XVI DP 5588	UNMK (1) T 53032	ob38	73°13'00"	C		12.61 C		
UNMK (1) T 53032	PEG (1) A 6416	ob39	73°13'00"	C		7.96 C		
PEG (1) A 6416	Peg 13 DP 591355	ob40	69°13'30"	A A 6416	-0°00'33"	4.14 C		
Peg 13 DP 591355	IS 12 DP 591355	ob41	69°13'30"	A A 6416	-0°00'33"	15.97 C		Class A
UNMK A 6416	PEG (1) A 6416	ob37	159°30'27"	A A 6416	-0°00'33"	4.67 A	A 6416	
PEG XXXI DP 69036	peg (2) A 6416	ob34	359°37'00"	A A 6416	0°02'00"	12.03 C		
peg (2) A 6416	UNMK (4) T 54993	ob42	359°37'00"	A A 6416	0°02'00"	0.93 C		
UNMK (4) T 54993	IS 11 DP 591355	ob44	359°37'00"	A A 6416	0°02'00"	2.57 C		Class A
IS 11 DP 591355	IS 12 DP 591355	ob46	359°37'00"	A A 6416	0°02'00"	39.55 C		Class A
peg (2) A 6416	UNMK (3) T 53032	ob43	269°37'00"	A A 6416	0°02'00"	25.21 C		
UNMK (3) T 53032	Peg (1) A 6416	ob48	269°37'00"	A A 6416	0°02'00"	12.19 C		
UNMK (4) T 54993	UNMK (2) T 54993	ob45	269°37'00"	C		13.18 C		Class A
UNMK (2) T 54993	IS 10 DP 591355	ob49	356°46'00"	C		2.57 C		Class A
IS 10 DP 591355	Peg 13 DP 591355	ob50	356°46'00"	C		34.04 C		Class A
IS 11 DP 591355	IS 10 DP 591355	ob47	269°37'00"	C		13.30 C		Class A
MN 4 DP 591355	PEG XXVIII DP 69036	ob9	274°05'10"	M		47.15 M		
MN 4 DP 591355	PEG XXXI DP 69036	ob10	291°27'00"	M		10.83 M		
IT 1 DP 591355	IS 12 DP 591355	ob19	188°23'00"	M		14.00 M		
NAIL 3 DP 591355	IS 11 DP 591355	ob12	93°20'00"	M		8.24 M		
IT 1 DP 591355	Peg 13 DP 591355	ob20	221°01'00"	M		25.85 M		
NAIL 3 DP 591355	IS 10 DP 591355	ob13	263°36'00"	M		5.11 M		
IT IV SO 19508	IT III SO 19351	ob30	179°37'00"	A SO 19508	0°00'00"	33.99 A	A 6416	

Mark Name	Mark Condition	Description
CCC BM 317		Masonry nail flush in kerb
IS 10 DP 591355		(reinstates posn T 428242.1) Bdy spike in driveway
IS 11 DP 591355		(reinstates posn T 428242.1) Bdy spike in driveway

Mark and Vector

Survey Number DP 591355
Meridional Circuit Mount Pleasant 2000

Mark Name	Mark Condition	Description
IS 12 DP 591355		(reinstates peg A 6416) Bdy spike in footpath
IS 2 DP 591355		Iron spike down 0.05 in garden
IT 1 DP 591355		Iron tube down 0.2m in bank
IT IX SO 19351		Iron tube flush in seal
MA 8 DP 473692		Masonry nail flush in kerb
MN 4 DP 591355		Masonry nail flush in kerb
MN 5 DP 591355		Masonry nail flush in kerb
NAIL 1 SO 479618		Nail flush in kerb
NAIL 3 DP 591355		Nail flush in driveway
NAIL 9 DP 473692		Nail flush in footpath
Peg 13 DP 591355		(reinstates posn T 54993) Peg under hedge
PEG XXVIII DP 69036		Peg bottom of fence
PEG XXXI DP 69036		Peg bottom of fence
RN V SO 416561		Masonry nail flush in kerb
SS 85 SO 804	Destroyed	Found to be disturbed on LT 473692, recorded in its disturbed position by STONE 60 DP 473692
I DP 69036	Searched For and Not Found	
IT III SO 19351	Searched For and Not Found	
IT IV SO 19508	Searched For and Not Found	

***** End of Report *****

Schedule / Memorandum

Land Registration District

Canterbury

Survey Number

LT 591355

Territorial Authority (the Council)

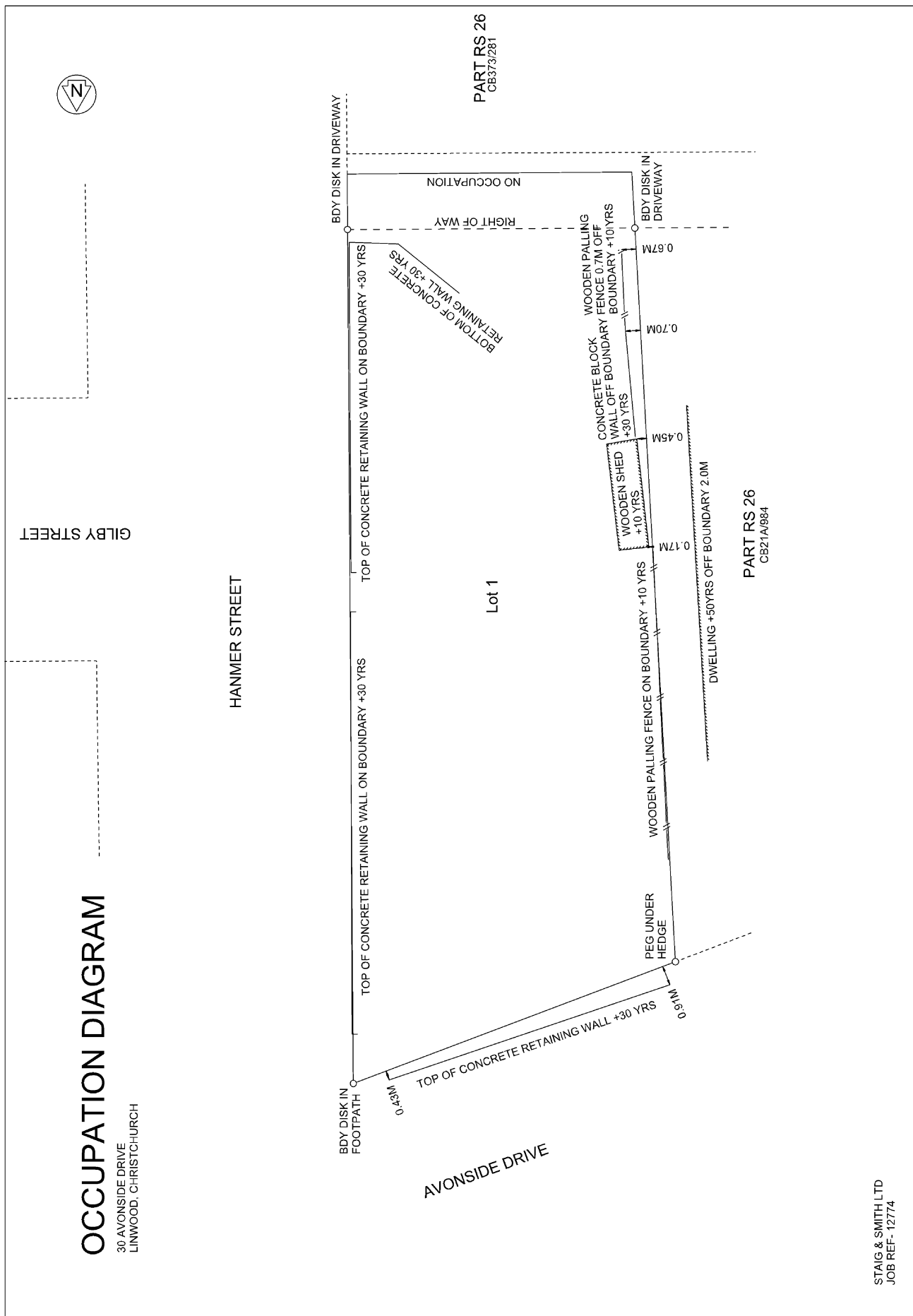
Christchurch City

Schedule of Existing Easements

Last Edited: 29 Jun 2023 11:41:44

<u>Purpose</u>	<u>Shown</u>	<u>Burdened Land</u> <u>(Servient Tenement)</u>	<u>Creating Document Reference</u>
Right of way	A	Lot 1	428242.1

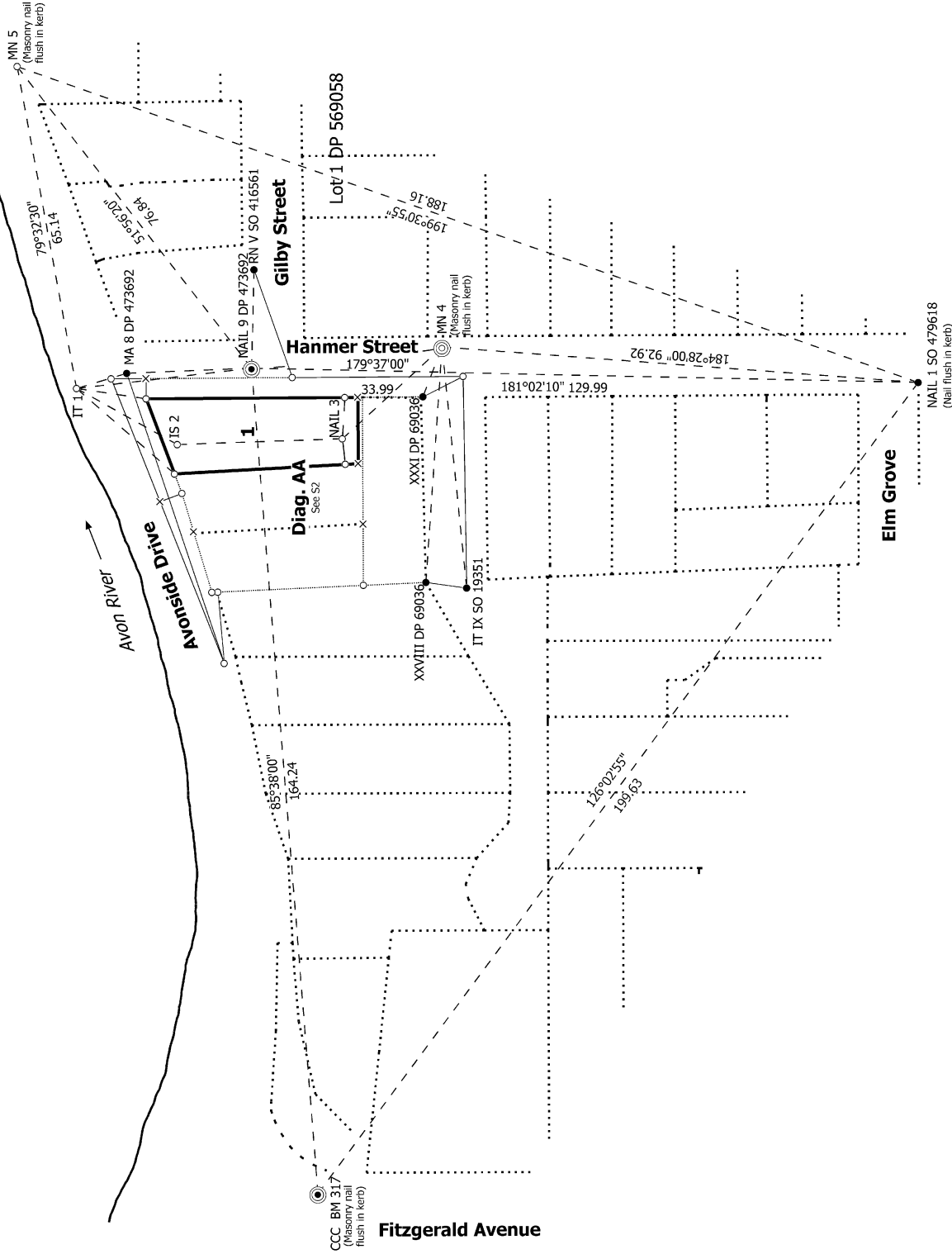
Occupation Diagram

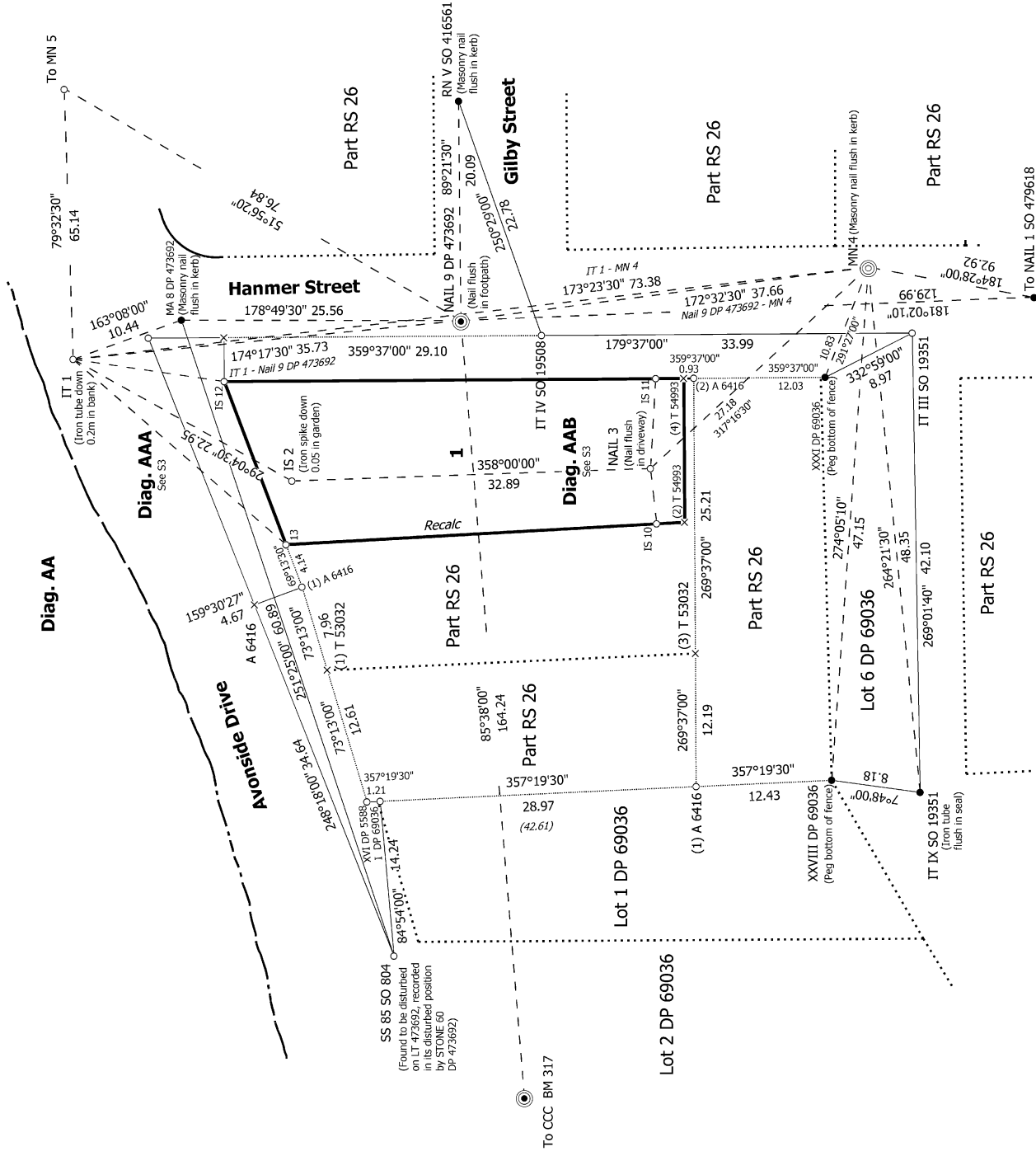
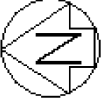


STAIG & SMITH LTD
 JOB REF- 12774



Diag. A





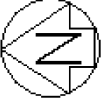
S 2/3

Lot 1 being Part RS 26

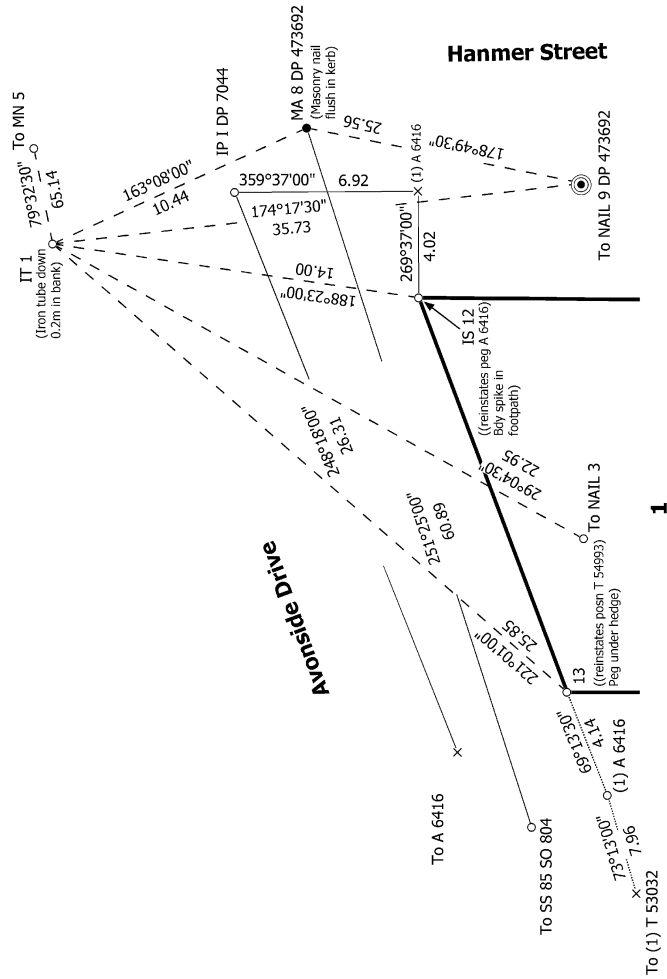
Surveyor: Andrew John Marshall
 Firm: Staig and Smith Limited
 Date of Survey: 8/05/2023

Record of Survey
 DP 591355

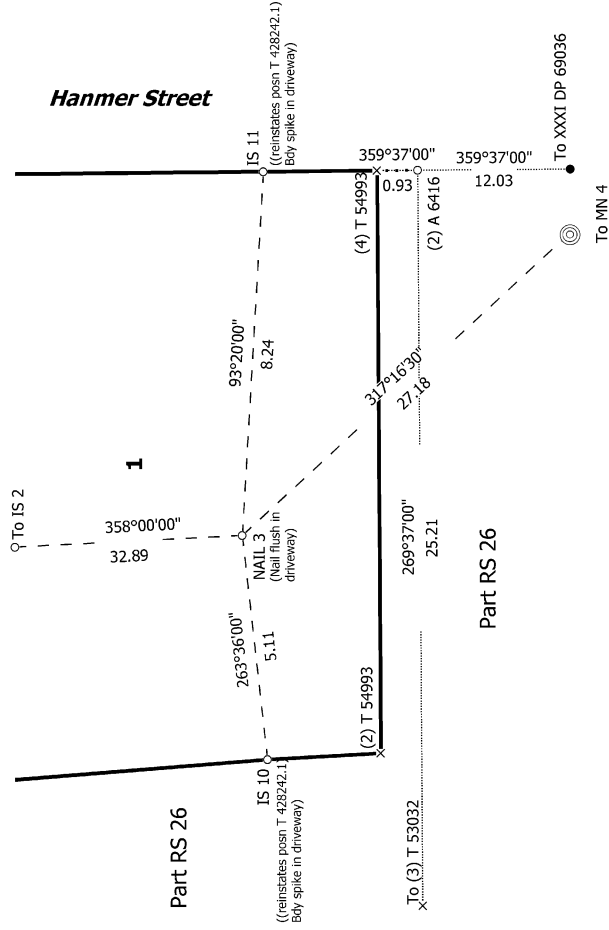
Deposited on: 17/04/2024



Diag. AAA

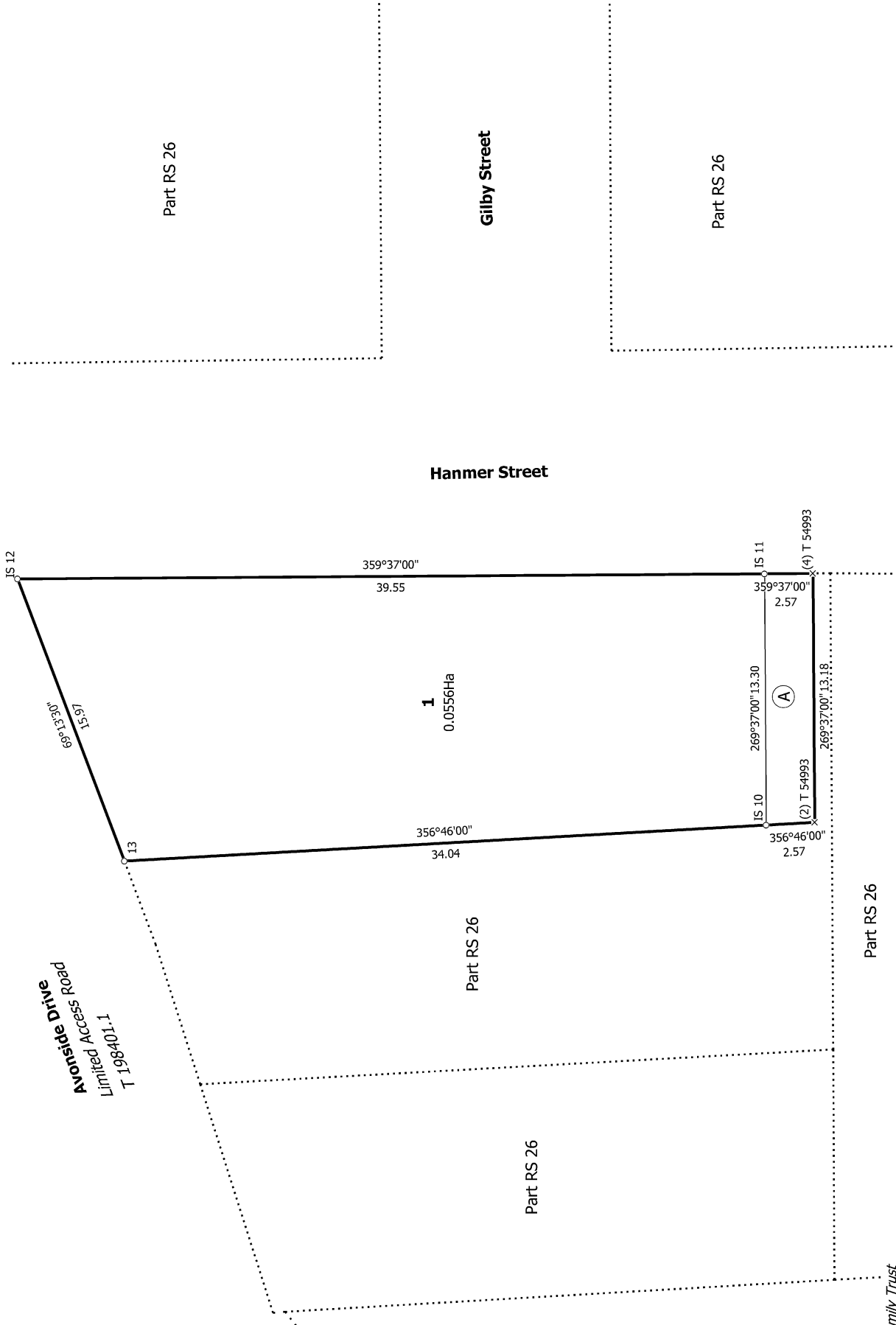


Diag. AAB





Diag. A



Avonside Drive
 Limited Access Road
 T 198401.1

T 1/1

Record of Survey
 DP 591355
 Deposited on: 17/04/2024

Surveyor: Andrew John Marshall
 Firm: Staig and Smith Limited
 Date of Survey: 8/05/2023

Lot 1 being Part RS 26

Part RS 26

12774 Oydick Family Trust

Land District: Canterbury

Digitally Generated Plan

Generated on: 23/04/2024 3:38pm Page 10 of 10