



Record of Survey - DP 589872

Survey Number DP 589872
Surveyor Reference 7828 Mathesons Rd
Surveyor Craig Martin Tinkler
Survey Firm Baseline Group
Surveyor Declaration I Craig Martin Tinkler, being a licensed cadastral surveyor, certify that--
(a) this dataset provided by me and its related survey are accurate, correct and in accordance with the Cadastral Survey Act 2002 and Cadastral Survey Rules 2021; and
(b) the survey was undertaken by me or under my personal direction.
Declared on 24 Jul 2023 01:59 PM

Survey Details

Dataset Description Lots 1-7 Being Subdivision of Lot 1 DP 44943
Purpose LT Subdivision
Status Deposited **Type** Survey
Land District Canterbury **Survey Class** Class A
Meridional Circuit Mount Pleasant 2000 **Vertical Datum** None

Survey Dates

Surveyed Date 28/04/2023 **Certified Date** 24/07/2023
Submitted Date 24/07/2023 13:59:33 **Survey Approval Date** 16/08/2023
Deposit Date 24/07/2023

Referenced Surveys

| Survey Number | Land District | Bearing Correction |
|---------------|---------------|--------------------|
| DP 78137 | Canterbury | 0°00'00" |
| FB 2451/120 | Canterbury | 0°00'00" |
| DP 44943 | Canterbury | 0°01'00" |
| DP 407142 | Canterbury | 0°00'00" |
| DP 464892 | Canterbury | 0°00'00" |
| DP 490119 | Canterbury | 0°00'00" |
| DP 507432 | Canterbury | 0°00'00" |
| DP 520982 | Canterbury | 0°00'00" |

Territorial Authorities

Christchurch City

Comprised In

RT CB23K/392

Created Parcels

| Parcels | Parcel Intent | Area | RT Reference |
|-----------------------------|------------------|-----------|--------------|
| Lot 1 Deposited Plan 589872 | Fee Simple Title | 0.0162 Ha | 1125696 |
| Lot 2 Deposited Plan 589872 | Fee Simple Title | 0.0118 Ha | 1125697 |
| Lot 3 Deposited Plan 589872 | Fee Simple Title | 0.0118 Ha | 1125698 |
| Lot 4 Deposited Plan 589872 | Fee Simple Title | 0.0118 Ha | 1125699 |

Record of Survey - DP 589872

Created Parcels

| Parcels | Parcel Intent | Area | RT Reference |
|-------------------------------|------------------|-----------------|--------------|
| Lot 5 Deposited Plan 589872 | Fee Simple Title | 0.0118 Ha | 1125700 |
| Lot 6 Deposited Plan 589872 | Fee Simple Title | 0.0118 Ha | 1125701 |
| Lot 7 Deposited Plan 589872 | Fee Simple Title | 0.0165 Ha | 1125702 |
| Area A Deposited Plan 589872 | Easement | | |
| Area B Deposited Plan 589872 | Easement | | |
| Area C Deposited Plan 589872 | Easement | | |
| Area D Deposited Plan 589872 | Easement | | |
| Area E Deposited Plan 589872 | Easement | | |
| Area F Deposited Plan 589872 | Easement | | |
| Area G Deposited Plan 589872 | Easement | | |
| Area H Deposited Plan 589872 | Easement | | |
| Area I Deposited Plan 589872 | Easement | | |
| Area J Deposited Plan 589872 | Easement | | |
| Area K Deposited Plan 589872 | Easement | | |
| Area L Deposited Plan 589872 | Easement | | |
| Area M Deposited Plan 589872 | Easement | | |
| Area N Deposited Plan 589872 | Easement | | |
| Area O Deposited Plan 589872 | Easement | | |
| Area P Deposited Plan 589872 | Easement | | |
| Area Q Deposited Plan 589872 | Easement | | |
| Area R Deposited Plan 589872 | Easement | | |
| Area S Deposited Plan 589872 | Easement | | |
| Area T Deposited Plan 589872 | Easement | | |
| Area U Deposited Plan 589872 | Easement | | |
| Area V Deposited Plan 589872 | Easement | | |
| Area W Deposited Plan 589872 | Easement | | |
| Area X Deposited Plan 589872 | Easement | | |
| Area Y Deposited Plan 589872 | Easement | | |
| Area Z Deposited Plan 589872 | Easement | | |
| Area AA Deposited Plan 589872 | Easement | | |
| Area AB Deposited Plan 589872 | Easement | | |
| Area AC Deposited Plan 589872 | Easement | | |
| Total Area | | <hr/> 0.0917 Ha | |

Mark and Vector

Survey Number DP 589872

Meridional Circuit Mount Pleasant 2000

| From | To | Code | Bearing | Adpt Surv | Bearing Correction | Distance | Adpt Surv | Class |
|-----------------------|-----------------------|-------|--------------|-----------|--------------------|----------|-----------|---------|
| BM 3242 DP 416542 | MA III DP 589872 | ob0 | 207°31'20" M | | | 40.79 M | | |
| MA III DP 589872 | MA II DP 589872 | ob2 | 207°31'20" M | | | 17.70 M | | |
| MA II DP 589872 | MA I DP 589872 | ob3 | 207°31'20" M | | | 10.67 M | | |
| MA I DP 589872 | HN I DP 507432 | ob13 | 207°31'20" M | | | 45.99 M | | |
| HN I DP 507432 | ALP 1 DP 464892 | ob25 | 207°31'20" M | | | 21.70 M | | |
| BM 3242 DP 416542 | IS II FB 2451/120 | ob1 | 234°28'30" M | | | 19.81 M | | |
| MA I DP 589872 | IT II SO 14099 | ob14 | 289°29'30" M | | | 62.55 M | | |
| ALP 1 DP 464892 | RN I FB 2475/1 | ob26 | 188°06'00" A | DP 464892 | 0°00'00" | 15.37 A | DP 464892 | |
| RN I FB 2475/1 | IT NO REC DP 78137 | ob30 | 288°39'30" A | DP 78137 | 0°00'00" | 14.35 A | DP 78137 | |
| IS II FB 2451/120 | IS I DP 44943 | ob27 | 207°33'20" A | DP 44943 | 0°01'00" | 38.41 C | | |
| IS I DP 44943 | IT I SO 14099 | ob32 | 207°33'20" A | DP 44943 | 0°01'00" | 18.96 A | DP 44943 | |
| IT I SO 14099 | IT NO REC DP 78137 | ob34 | 207°33'20" A | DP 44943 | 0°01'00" | 78.54 A | DP 44943 | |
| IT I SO 14099 | PEG IV SO 14099 | ob35 | 284°11'00" A | DP 44943 | 0°01'00" | 6.20 A | DP 44943 | |
| IS I DP 44943 | IS 2A DP 589872 | ob33 | 276°19'00" A | DP 44943 | 0°01'00" | 6.47 A | DP 44943 | |
| IT II SO 14099 | PEG 1B DP 589872 | ob28 | 230°22'00" A | DP 44943 | 0°01'00" | 6.58 A | DP 44943 | |
| IT II SO 14099 | PEG 2B DP 589872 | ob29 | 3°25'00" A | DP 44943 | 0°01'00" | 12.85 A | DP 44943 | |
| UNMK U63 DP 589872 | UNMK U1 DP 589872 | ob40 | 27°33'20" C | | | 2.52 C | | Class A |
| UNMK U1 DP 589872 | UNMK U2 DP 589872 | ob31 | 27°33'20" C | | | 8.15 C | | Class A |
| UNMK U2 DP 589872 | IS 2A DP 589872 | ob134 | 27°33'20" C | | | 2.83 C | | Class A |
| PEG 1B DP 589872 | PEG 1C DP 589872 | ob37 | 108°53'00" C | | | 9.26 C | | Class A |
| PEG 1C DP 589872 | PEG 1D DP 589872 | ob41 | 108°53'00" C | | | 6.60 C | | Class A |
| PEG 1D DP 589872 | UNMK U65 DP 589872 | ob43 | 108°53'00" C | | | 6.60 C | | Class A |
| UNMK U65 DP 589872 | PEG 1F DP 589872 | ob45 | 108°53'00" C | | | 6.62 C | | Class A |
| PEG 1F DP 589872 | PEG 1G DP 589872 | ob47 | 108°53'00" C | | | 6.60 C | | Class A |
| PEG 1G DP 589872 | UNMK U64 DP 589872 | ob49 | 108°53'00" C | | | 6.59 C | | Class A |

Mark and Vector

Survey Number DP 589872

Meridional Circuit Mount Pleasant 2000

| From | To | Code | Bearing | Adpt Surv | Bearing Correction | Distance | Adpt Surv | Class |
|--------------------|--------------------|-------|------------|-----------|--------------------|----------|-----------|---------|
| UNMK U64 DP 589872 | PEG IV SO 14099 | ob51 | 108°53'00" | C | | 7.74 C | | Class A |
| PEG 2B DP 589872 | PEG 2C DP 589872 | ob39 | 109°02'40" | C | | 9.18 C | | Class A |
| PEG 2C DP 589872 | PEG 2D DP 589872 | ob53 | 109°02'40" | C | | 6.63 C | | Class A |
| PEG 2D DP 589872 | PEG 2E DP 589872 | ob54 | 109°02'40" | C | | 6.61 C | | Class A |
| PEG 2E DP 589872 | BD 2F DP 589872 | ob55 | 109°02'40" | C | | 6.60 C | | Class A |
| BD 2F DP 589872 | PEG 2G DP 589872 | ob56 | 109°02'40" | C | | 6.61 C | | Class A |
| PEG 2G DP 589872 | PEG 2H DP 589872 | ob57 | 109°02'40" | C | | 6.62 C | | Class A |
| PEG 2H DP 589872 | IS 2A DP 589872 | ob58 | 109°02'40" | C | | 10.47 C | | Class A |
| PEG 1B DP 589872 | PEG 2B DP 589872 | ob38 | 18°54'00" | C | | 17.99 C | | Class A |
| PEG 1C DP 589872 | UNMK U3 DP 589872 | ob42 | 18°40'00" | C | | 4.50 C | | Class A |
| UNMK U3 DP 589872 | UNMK U4 DP 589872 | ob83 | 18°40'00" | C | | 0.21 C | | Class A |
| UNMK U4 DP 589872 | UNMK U5 DP 589872 | ob59 | 18°40'00" | C | | 10.27 C | | Class A |
| UNMK U5 DP 589872 | UNMK U6 DP 589872 | ob62 | 18°40'00" | C | | 2.00 C | | Class A |
| UNMK U6 DP 589872 | PEG 2C DP 589872 | ob130 | 18°40'00" | C | | 0.99 C | | Class A |
| PEG 1D DP 589872 | UNMK U7 DP 589872 | ob44 | 18°45'00" | C | | 4.50 C | | Class A |
| UNMK U7 DP 589872 | UNMK U8 DP 589872 | ob85 | 18°45'00" | C | | 0.24 C | | Class A |
| UNMK U8 DP 589872 | UNMK U9 DP 589872 | ob63 | 18°45'00" | C | | 10.26 C | | Class A |
| UNMK U9 DP 589872 | UNMK U10 DP 589872 | ob66 | 18°45'00" | C | | 2.00 C | | Class A |
| UNMK U10 DP 589872 | PEG 2D DP 589872 | ob135 | 18°45'00" | C | | 0.95 C | | Class A |
| UNMK U11 DP 589872 | UNMK U12 DP 589872 | ob87 | 18°47'00" | C | | 0.26 C | | Class A |
| UNMK U12 DP 589872 | UNMK U13 DP 589872 | ob67 | 18°47'00" | C | | 10.26 C | | Class A |
| UNMK U13 DP 589872 | UNMK U14 DP 589872 | ob70 | 18°47'00" | C | | 2.00 C | | Class A |
| UNMK U14 DP 589872 | PEG 2E DP 589872 | ob137 | 18°47'00" | C | | 0.91 C | | Class A |
| PEG 1F DP 589872 | UNMK U15 DP 589872 | ob48 | 18°44'00" | C | | 4.50 C | | Class A |

Mark and Vector

Survey Number DP 589872

Meridional Circuit Mount Pleasant 2000

| From | To | Code | Bearing | Adpt Surv | Bearing Correction | Distance | Adpt Surv | Class |
|--------------------|--------------------|-------|------------|-----------|--------------------|----------|-----------|---------|
| UNMK U15 DP 589872 | UNMK U16 DP 589872 | ob89 | 18°44'00" | C | | 0.27 C | | Class A |
| UNMK U16 DP 589872 | UNMK U17 DP 589872 | ob71 | 18°44'00" | C | | 10.25 C | | Class A |
| UNMK U17 DP 589872 | UNMK U18 DP 589872 | ob74 | 18°44'00" | C | | 2.00 C | | Class A |
| UNMK U18 DP 589872 | BD 2F DP 589872 | ob139 | 18°44'00" | C | | 0.89 C | | Class A |
| PEG 1G DP 589872 | UNMK U19 DP 589872 | ob50 | 18°46'00" | C | | 4.50 C | | Class A |
| UNMK U19 DP 589872 | UNMK U20 DP 589872 | ob91 | 18°46'00" | C | | 0.28 C | | Class A |
| UNMK U20 DP 589872 | UNMK U21 DP 589872 | ob75 | 18°46'00" | C | | 10.25 C | | Class A |
| UNMK U21 DP 589872 | UNMK U22 DP 589872 | ob78 | 18°46'00" | C | | 2.00 C | | Class A |
| UNMK U22 DP 589872 | PEG 2G DP 589872 | ob141 | 18°46'00" | C | | 0.86 C | | Class A |
| UNMK U23 DP 589872 | UNMK U24 DP 589872 | ob93 | 18°52'00" | C | | 0.30 C | | Class A |
| UNMK U24 DP 589872 | UNMK U25 DP 589872 | ob79 | 18°52'00" | C | | 10.25 C | | Class A |
| UNMK U25 DP 589872 | UNMK U26 DP 589872 | ob82 | 18°52'00" | C | | 2.00 C | | Class A |
| UNMK U26 DP 589872 | PEG 2H DP 589872 | ob132 | 18°52'00" | C | | 0.82 C | | Class A |
| UNMK U3 DP 589872 | UNMK U7 DP 589872 | ob84 | 108°53'00" | C | | 6.61 C | | Class A |
| UNMK U7 DP 589872 | UNMK U27 DP 589872 | ob86 | 108°53'00" | C | | 6.15 C | | Class A |
| UNMK U27 DP 589872 | UNMK U11 DP 589872 | ob146 | 108°53'00" | C | | 0.45 C | | Class A |
| UNMK U11 DP 589872 | UNMK U15 DP 589872 | ob88 | 108°53'00" | C | | 6.62 C | | Class A |
| UNMK U15 DP 589872 | UNMK U28 DP 589872 | ob90 | 108°53'00" | C | | 6.16 C | | Class A |
| UNMK U28 DP 589872 | UNMK U19 DP 589872 | ob148 | 108°53'00" | C | | 0.45 C | | Class A |
| UNMK U19 DP 589872 | UNMK U29 DP 589872 | ob92 | 108°53'00" | C | | 6.15 C | | Class A |
| UNMK U29 DP 589872 | UNMK U23 DP 589872 | ob150 | 108°53'00" | C | | 0.45 C | | Class A |
| UNMK U23 DP 589872 | UNMK U30 DP 589872 | ob94 | 108°53'00" | C | | 6.83 C | | Class A |
| UNMK U30 DP 589872 | UNMK U63 DP 589872 | ob125 | 108°53'00" | C | | 1.59 C | | Class A |
| UNMK U4 DP 589872 | UNMK U31 DP 589872 | ob60 | 288°40'00" | C | | 0.19 C | | Class A |

Mark and Vector

Survey Number DP 589872

Meridional Circuit Mount Pleasant 2000

| From | To | Code | Bearing | Adpt Surv | Bearing Correction | Distance | Adpt Surv | Class |
|-----------------------|-----------------------|-------|------------|-----------|--------------------|----------|-----------|---------|
| UNMK U32 DP 589872 | UNMK U5 DP 589872 | ob96 | 108°40'00" | C | | 0.15 C | | Class A |
| UNMK U4 DP 589872 | UNMK U33 DP 589872 | ob61 | 108°40'00" | C | | 0.15 C | | Class A |
| UNMK U33 DP 589872 | UNMK U34 DP 589872 | ob97 | 18°40'00" | C | | 10.27 C | | Class A |
| UNMK U34 DP 589872 | UNMK U5 DP 589872 | ob98 | 288°40'00" | C | | 0.15 C | | Class A |
| UNMK U8 DP 589872 | UNMK U35 DP 589872 | ob64 | 288°45'00" | C | | 0.19 C | | Class A |
| UNMK U36 DP 589872 | UNMK U9 DP 589872 | ob101 | 108°45'00" | C | | 0.15 C | | Class A |
| UNMK U8 DP 589872 | UNMK U37 DP 589872 | ob65 | 108°45'00" | C | | 0.15 C | | Class A |
| UNMK U37 DP 589872 | UNMK U38 DP 589872 | ob102 | 18°45'00" | C | | 10.26 C | | Class A |
| UNMK U38 DP 589872 | UNMK U9 DP 589872 | ob103 | 288°45'00" | C | | 0.15 C | | Class A |
| UNMK U12 DP 589872 | UNMK U39 DP 589872 | ob68 | 288°47'00" | C | | 0.19 C | | Class A |
| UNMK U39 DP 589872 | UNMK U40 DP 589872 | ob105 | 18°47'00" | C | | 0.32 C | | Class A |
| UNMK U41 DP 589872 | UNMK U13 DP 589872 | ob106 | 108°47'00" | C | | 0.15 C | | Class A |
| UNMK U12 DP 589872 | UNMK U42 DP 589872 | ob69 | 108°47'00" | C | | 0.15 C | | Class A |
| UNMK U42 DP 589872 | UNMK U43 DP 589872 | ob107 | 18°47'00" | C | | 10.26 C | | Class A |
| UNMK U43 DP 589872 | UNMK U13 DP 589872 | ob108 | 288°47'00" | C | | 0.15 C | | Class A |
| UNMK U16 DP 589872 | UNMK U44 DP 589872 | ob72 | 288°44'00" | C | | 0.19 C | | Class A |
| UNMK U45 DP 589872 | UNMK U17 DP 589872 | ob111 | 108°44'00" | C | | 0.15 C | | Class A |
| UNMK U16 DP 589872 | UNMK U46 DP 589872 | ob73 | 108°44'00" | C | | 0.15 C | | Class A |
| UNMK U46 DP 589872 | UNMK U47 DP 589872 | ob112 | 18°44'00" | C | | 10.25 C | | Class A |
| UNMK U47 DP 589872 | UNMK U17 DP 589872 | ob113 | 288°44'00" | C | | 0.15 C | | Class A |
| UNMK U20 DP 589872 | UNMK U48 DP 589872 | ob76 | 288°46'00" | C | | 0.19 C | | Class A |
| UNMK U48 DP 589872 | UNMK U49 DP 589872 | ob115 | 18°46'00" | C | | 0.32 C | | Class A |
| UNMK U50 DP 589872 | UNMK U21 DP 589872 | ob116 | 108°46'00" | C | | 0.15 C | | Class A |
| UNMK U20 DP 589872 | UNMK U51 DP 589872 | ob77 | 108°46'00" | C | | 0.15 C | | Class A |

Mark and Vector

Survey Number DP 589872

Meridional Circuit Mount Pleasant 2000

| From | To | Code | Bearing | Adpt Surv | Bearing Correction | Distance | Adpt Surv | Class |
|--------------------|--------------------|-------|------------|-----------|--------------------|----------|-----------|---------|
| UNMK U51 DP 589872 | UNMK U52 DP 589872 | ob117 | 18°46'00" | C | | 10.25 C | | Class A |
| UNMK U52 DP 589872 | UNMK U21 DP 589872 | ob118 | 288°46'00" | C | | 0.15 C | | Class A |
| UNMK U24 DP 589872 | UNMK U53 DP 589872 | ob80 | 288°52'00" | C | | 0.19 C | | Class A |
| UNMK U53 DP 589872 | UNMK U54 DP 589872 | ob120 | 18°52'00" | C | | 0.32 C | | Class A |
| UNMK U55 DP 589872 | UNMK U25 DP 589872 | ob121 | 108°52'00" | C | | 0.15 C | | Class A |
| UNMK U24 DP 589872 | UNMK U56 DP 589872 | ob81 | 108°52'00" | C | | 0.15 C | | Class A |
| UNMK U56 DP 589872 | UNMK U57 DP 589872 | ob122 | 18°52'00" | C | | 10.25 C | | Class A |
| UNMK U57 DP 589872 | UNMK U25 DP 589872 | ob123 | 288°52'00" | C | | 0.15 C | | Class A |
| UNMK U34 DP 589872 | UNMK U36 DP 589872 | ob99 | 108°42'00" | C | | 6.33 C | | Class A |
| UNMK U38 DP 589872 | UNMK U41 DP 589872 | ob104 | 108°42'00" | C | | 6.31 C | | Class A |
| UNMK U43 DP 589872 | UNMK U45 DP 589872 | ob109 | 108°53'00" | C | | 6.30 C | | Class A |
| UNMK U47 DP 589872 | UNMK U50 DP 589872 | ob114 | 108°47'00" | C | | 6.31 C | | Class A |
| UNMK U52 DP 589872 | UNMK U55 DP 589872 | ob119 | 108°42'00" | C | | 6.32 C | | Class A |
| UNMK U57 DP 589872 | UNMK U58 DP 589872 | ob124 | 108°55'00" | C | | 6.71 C | | Class A |
| UNMK U58 DP 589872 | UNMK U59 DP 589872 | ob126 | 199°00'00" | C | | 8.06 C | | Class A |
| UNMK U59 DP 589872 | UNMK U30 DP 589872 | ob128 | 199°00'00" | C | | 2.49 C | | Class A |
| UNMK U59 DP 589872 | UNMK U1 DP 589872 | ob129 | 108°53'00" | C | | 1.97 C | | Class A |
| UNMK U6 DP 589872 | UNMK U10 DP 589872 | ob131 | 108°42'00" | C | | 6.63 C | | Class A |
| UNMK U10 DP 589872 | UNMK U14 DP 589872 | ob136 | 108°42'00" | C | | 6.61 C | | Class A |
| UNMK U14 DP 589872 | UNMK U18 DP 589872 | ob138 | 108°53'00" | C | | 6.60 C | | Class A |
| UNMK U18 DP 589872 | UNMK U22 DP 589872 | ob140 | 108°47'00" | C | | 6.61 C | | Class A |
| UNMK U22 DP 589872 | UNMK U26 DP 589872 | ob142 | 108°42'00" | C | | 6.62 C | | Class A |
| UNMK U26 DP 589872 | IS 2A DP 589872 | ob133 | 104°34'00" | C | | 10.50 C | | Class A |
| UNMK U27 DP 589872 | UNMK U60 DP 589872 | ob147 | 18°47'00" | C | | 0.58 C | | Class A |

Mark and Vector

Survey Number DP 589872

Meridional Circuit Mount Pleasant 2000

| From | To | Code | Bearing | Adpt Surv | Bearing Correction | Distance | Adpt Surv | Class |
|--------------------|--------------------|-------|------------|-----------|--------------------|----------|-----------|---------|
| UNMK U60 DP 589872 | UNMK U40 DP 589872 | ob152 | 108°53'00" | C | | 0.26 C | | Class A |
| UNMK U28 DP 589872 | UNMK U61 DP 589872 | ob149 | 18°46'00" | C | | 0.60 C | | Class A |
| UNMK U61 DP 589872 | UNMK U49 DP 589872 | ob153 | 108°53'00" | C | | 0.26 C | | Class A |
| UNMK U29 DP 589872 | UNMK U62 DP 589872 | ob151 | 18°52'00" | C | | 0.62 C | | Class A |
| UNMK U62 DP 589872 | UNMK U54 DP 589872 | ob154 | 108°53'00" | C | | 0.26 C | | Class A |
| MA I DP 589872 | UNMK U64 DP 589872 | ob15 | 277°06'00" | C | | 24.22 C | | |
| MA I DP 589872 | PEG 1G DP 589872 | ob16 | 279°37'00" | M | | 30.70 M | | |
| MA I DP 589872 | PEG 1F DP 589872 | ob17 | 281°15'00" | M | | 37.23 M | | |
| MA I DP 589872 | UNMK U65 DP 589872 | ob18 | 282°24'00" | C | | 43.80 C | | |
| MA I DP 589872 | PEG 1D DP 589872 | ob19 | 283°15'00" | M | | 50.37 M | | |
| MA I DP 589872 | PEG 1C DP 589872 | ob20 | 283°54'00" | M | | 56.94 M | | |
| MA I DP 589872 | PEG 1B DP 589872 | ob21 | 284°35'40" | M | | 66.17 M | | |
| MA II DP 589872 | IS 2A DP 589872 | ob5 | 297°52'00" | M | | 15.04 M | | |
| MA II DP 589872 | PEG 2H DP 589872 | ob6 | 294°15'00" | M | | 25.43 M | | |
| MA II DP 589872 | PEG 2G DP 589872 | ob7 | 293°11'00" | M | | 32.03 M | | |
| MA II DP 589872 | BD 2F DP 589872 | ob8 | 292°28'00" | M | | 38.63 M | | |
| MA II DP 589872 | PEG 2E DP 589872 | ob9 | 291°58'00" | M | | 45.22 M | | |
| MA II DP 589872 | PEG 2D DP 589872 | ob10 | 291°36'00" | M | | 51.82 M | | |
| MA II DP 589872 | PEG 2C DP 589872 | ob11 | 291°18'40" | M | | 58.45 M | | |
| MA II DP 589872 | PEG 2B DP 589872 | ob12 | 291°00'00" | M | | 67.62 M | | |
| PEG IV SO 14099 | PEG 1A DP 589872 | ob36 | 27°33'20" | C | | 0.10 C | | Class A |
| PEG 1A DP 589872 | UNMK U63 DP 589872 | ob155 | 27°33'20" | C | | 4.45 C | | Class A |
| UNMK U64 DP 589872 | MA 1H DP 589872 | ob52 | 18°52'00" | C | | 0.55 C | | Class A |
| MA 1H DP 589872 | UNMK U23 DP 589872 | ob156 | 18°52'00" | C | | 3.95 C | | Class A |

Mark and Vector

Survey Number DP 589872

Meridional Circuit Mount Pleasant 2000

| From | To | Code | Bearing | Adpt Surv | Bearing Correction | Distance | Adpt Surv | Class |
|--------------------|--------------------|-------|------------|-----------|--------------------|----------|-----------|---------|
| UNMK U65 DP 589872 | MA 1E DP 589872 | ob46 | 18°47'00" | C | | 0.50 C | | Class A |
| MA 1E DP 589872 | UNMK U11 DP 589872 | ob157 | 18°47'00" | C | | 4.00 C | | Class A |
| MA I DP 589872 | PEG 1A DP 589872 | ob22 | 271°59'00" | M | | 16.68 M | | |
| MA I DP 589872 | MA 1H DP 589872 | ob23 | 278°23'00" | M | | 24.12 M | | |
| MA I DP 589872 | MA 1E DP 589872 | ob24 | 283°03'00" | M | | 43.75 M | | |
| UNMK U58 DP 589872 | UNMK U2 DP 589872 | ob127 | 108°55'00" | C | | 3.18 C | | Class A |
| UNMK U54 DP 589872 | UNMK U75 DP 589872 | ob145 | 18°52'00" | C | | 1.95 C | | Class A |
| UNMK U75 DP 589872 | UNMK U76 DP 589872 | ob158 | 108°52'00" | C | | 0.04 C | | Class A |
| UNMK U76 DP 589872 | UNMK U55 DP 589872 | ob159 | 18°52'00" | C | | 7.98 C | | Class A |
| UNMK U49 DP 589872 | UNMK U77 DP 589872 | ob144 | 18°46'00" | C | | 1.95 C | | Class A |
| UNMK U77 DP 589872 | UNMK U66 DP 589872 | ob160 | 108°46'00" | C | | 0.04 C | | Class A |
| UNMK U66 DP 589872 | UNMK U50 DP 589872 | ob161 | 18°46'00" | C | | 7.98 C | | Class A |
| UNMK U44 DP 589872 | UNMK U67 DP 589872 | ob110 | 18°44'00" | C | | 2.27 C | | Class A |
| UNMK U67 DP 589872 | UNMK U68 DP 589872 | ob162 | 108°44'00" | C | | 0.04 C | | Class A |
| UNMK U68 DP 589872 | UNMK U45 DP 589872 | ob163 | 18°44'00" | C | | 7.98 C | | Class A |
| UNMK U40 DP 589872 | UNMK U69 DP 589872 | ob143 | 18°47'00" | C | | 1.95 C | | Class A |
| UNMK U69 DP 589872 | UNMK U70 DP 589872 | ob164 | 108°47'00" | C | | 0.04 C | | Class A |
| UNMK U70 DP 589872 | UNMK U41 DP 589872 | ob165 | 18°47'00" | C | | 7.99 C | | Class A |
| UNMK U35 DP 589872 | UNMK U71 DP 589872 | ob100 | 18°45'00" | C | | 2.27 C | | Class A |
| UNMK U71 DP 589872 | UNMK U72 DP 589872 | ob166 | 108°45'00" | C | | 0.04 C | | Class A |
| UNMK U72 DP 589872 | UNMK U36 DP 589872 | ob167 | 18°45'00" | C | | 7.99 C | | Class A |
| UNMK U31 DP 589872 | UNMK U73 DP 589872 | ob95 | 18°40'00" | C | | 2.27 C | | Class A |
| UNMK U73 DP 589872 | UNMK U74 DP 589872 | ob168 | 108°40'00" | C | | 0.04 C | | Class A |
| UNMK U74 DP 589872 | UNMK U32 DP 589872 | ob169 | 18°40'00" | C | | 8.00 C | | Class A |

Mark and Vector

Survey Number DP 589872

Meridional Circuit Mount Pleasant 2000

| From | To | Code | Bearing | Adpt Surv | Bearing Correction | Distance | Adpt Surv | Class |
|-----------------|-------------------|------|-------------|-----------|--------------------|----------|-----------|-------|
| MA II DP 589872 | IS II FB 2451/120 | ob4 | 15°07'00" M | | | 41.81 M | | |

| Mark Name | Mark Condition | Description |
|-------------------|----------------------------|---------------------------|
| ALP 1 DP 464892 | | Flush in kerb |
| BD 2F DP 589872 | | In wooden post |
| BM 3242 DP 416542 | | Flush in kerb |
| HN I DP 507432 | | Flush in kerb |
| IS 2A DP 589872 | | Flush in footpath |
| IS II FB 2451/120 | | d0.05 |
| MA 1E DP 589872 | | Flush in kerb |
| MA 1H DP 589872 | | Flush in kerb |
| MA I DP 589872 | | Flush in kerb |
| MA II DP 589872 | | Flush in kerb |
| MA III DP 589872 | | Flush in kerb |
| IT II SO 14099 | Destroyed | Destroyed by Construction |
| IS I DP 44943 | Searched For and Not Found | |
| IT I SO 14099 | Searched For and Not Found | |

*** End of Report ***



Land Registration District

Canterbury

Plan Number

DP 589872

Territorial Authority (the Council)

Christchurch City

| Memorandum of Easements (Pursuant to s243 Resource Management Act 1991) | | | |
|--|-------|--------------------------------------|---------------------------------------|
| Purpose | Shown | Servient Tenement (Burdened Land) | Dominant Tenement (Benefited Land) |
| Right of way, right to drain sewage & water, right to convey water, electricity & telecommunications | A | Lot 1 | Lots 2-7 |
| | B | Lot 2 | Lots 3-7 |
| | C | Lot 3 | Lots 4-7 |
| | D | Lot 4 | Lots 5-7 |
| | E | Lot 5 | Lots 6-7 |
| | F | Lot 6 | Lot 7 |
| Party Wall, right to drain water | G | Lot 1 | Lot 2 |
| | H | Lot 2 | Lot 1 |
| | I | Lot 2 | Lot 3 |
| | J | Lot 3 | Lot 2 |
| | K | Lot 3 | Lot 4 |
| | L | Lot 4 | Lot 3 |
| | M | Lot 4 | Lot 5 |
| | N | Lot 5 | Lot 4 |
| | O | Lot 5 | Lot 6 |
| | P | Lot 6 | Lot 5 |
| | Q | Lot 6 | Lot 7 |
| R | Lot 7 | Lot 6 | |
| Right of way on foot only, right to drain sewage & water, right to convey telecommunications | S | Lot 1 | Lots 2-7 |
| Right to drain water | T, Y | Lot 2 | Lot 1 |
| | U | Lot 3 | Lot 2 |
| | V | Lot 5 | Lot 4 |
| | AA | Lot 4 | Lot 3 |
| | AC | Lot 6 | Lot 5 |

Land Registration District

Canterbury

Plan Number

DP 589872

Territorial Authority (the Council)

Christchurch City

Memorandum of Easements

(Pursuant to s243 Resource Management Act 1991)

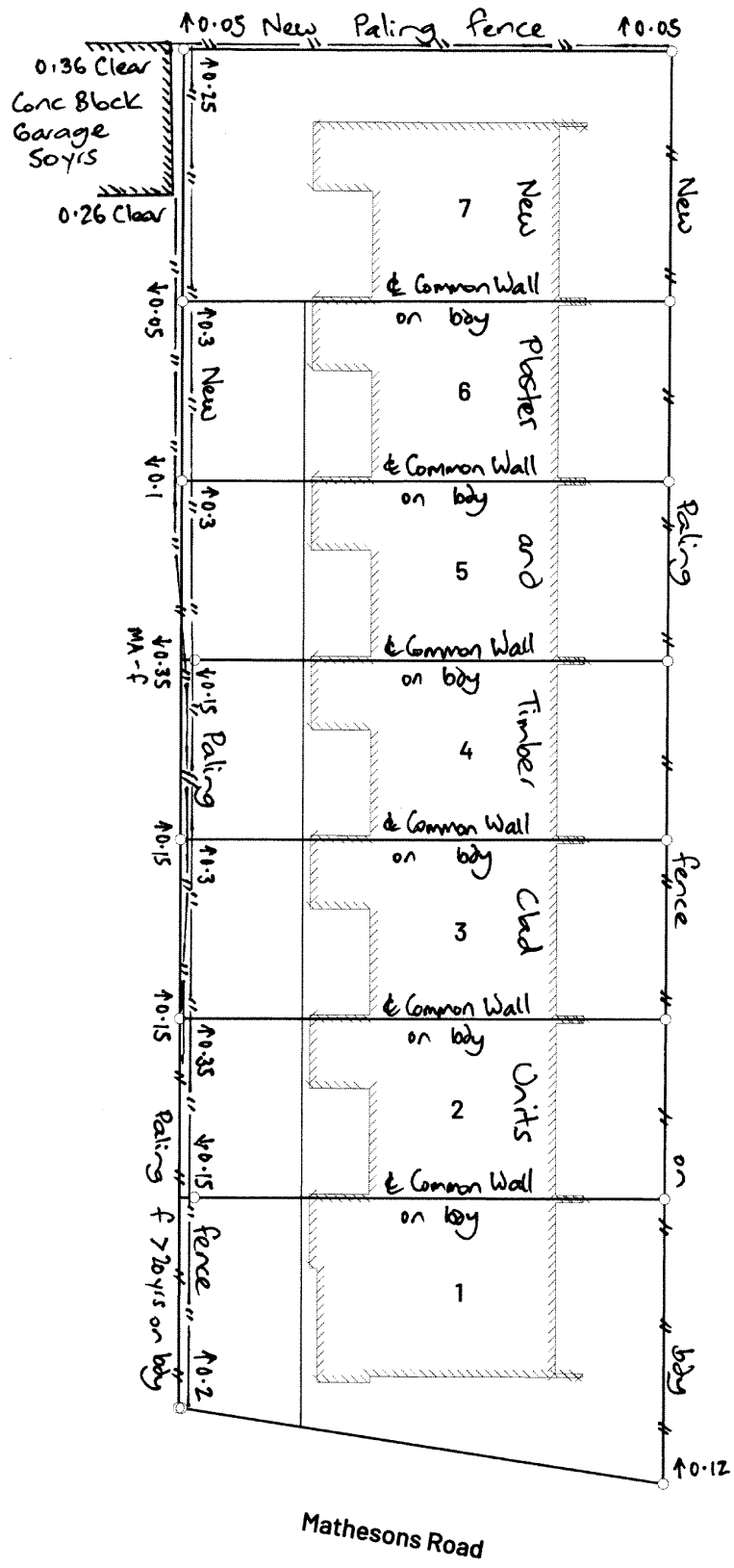
| Purpose | Shown | Servient Tenement (Burdened Land) | Dominant Tenement (Benefited Land) |
|---|-------|--------------------------------------|---------------------------------------|
| Right to drain sewage & water, right to convey electricity & telecommunications | X | Lot 1 | Lots 2-7 |
| | Y | Lot 2 | Lots 3-7 |
| | Z | Lot 3 | Lots 4-7 |
| | AA | Lot 4 | Lots 5-7 |
| | AB | Lot 5 | Lots 6-7 |
| | AC | Lot 6 | Lot 7 |
| Right to drain sewage & water, right to convey telecommunications | W | Lot 1 | Lots 2-7 |

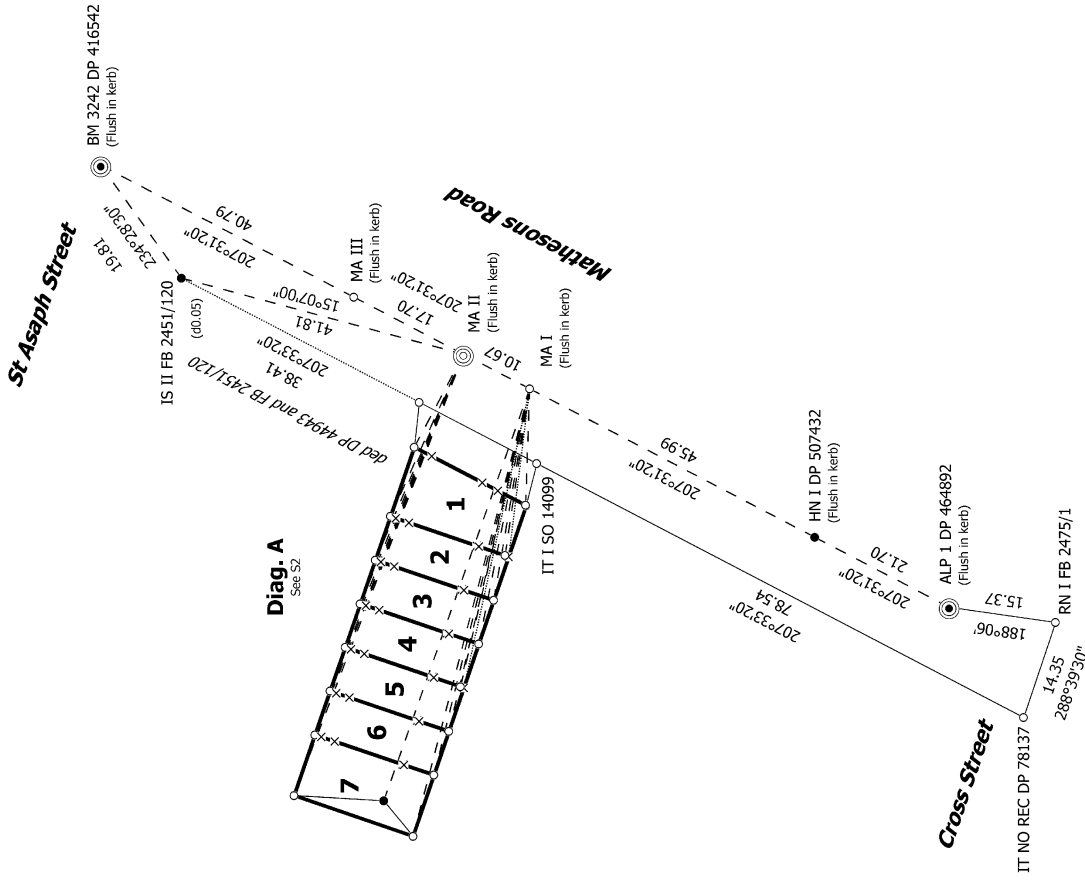
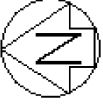
Schedule of Easements in Gross

| Purpose | Shown | Servient Tenement (Burdened Land) | Grantee |
|--|------------|--------------------------------------|-------------------------|
| Right to convey telecommunications in gross | A, S, W, X | Lot 1 | Enable Networks Limited |
| | Y | Lot 2 | |
| | Z | Lot 3 | |
| | AA | Lot 4 | |
| | AB | Lot 5 | |
| | AC | Lot 6 | |



Boundaries are not fenced unless shown otherwise





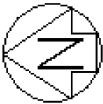
S 1/2

Record of Survey
 DP 589872
 Deposited on: 24/07/2023

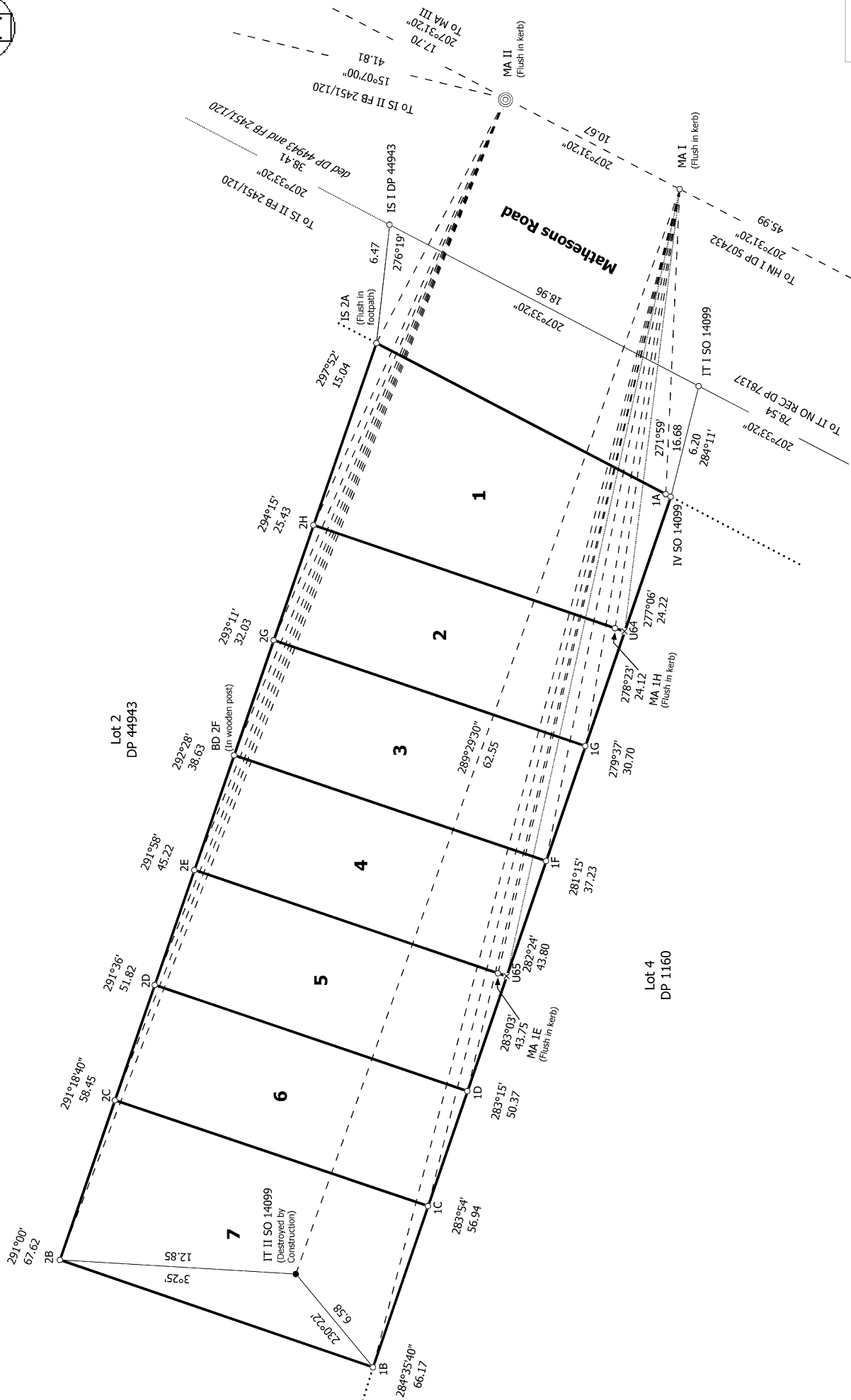
Surveyor: Craig Martin Tinkler
 Firm: Baseline Group
 Date of Survey: 28/04/2023

Lots 1-7 Being Subdivision of Lot 1 DP 44943

Land District: Canterbury
 Digitally Generated Plan
 Generated on: 18/08/2023 06:23am Page 14 of 18



Diag. A



S 2/2

Lots 1-7 Being Subdivision of Lot 1 DP 44943

Land District: Canterbury

Digitally Generated Plan

Generated on: 18/08/2023 06:23am | Page 15 of 18

Surveyor: Craig Martin Tinkler

Firm: Baseline Group

Date of Survey: 28/04/2023

Record of Survey
DP 589872

Deposited on: 24/07/2023

