

Record of Survey - DP 589546

Survey Number DP 589546
Surveyor Reference 5186
Surveyor Alistair Graeme Bond
Survey Firm Cogswell Surveys Ltd
Surveyor Declaration I Alistair Graeme Bond, being a licensed cadastral surveyor, certify that--
 (a) this dataset provided by me and its related survey are accurate, correct and in accordance with the Cadastral Survey Act 2002 and Cadastral Survey Rules 2021; and
 (b) the survey was undertaken by me or under my personal direction.
 Declared on 27 Sep 2023 02:26 PM

Survey Details

Dataset Description	LOTS 1 - 5 BEING A SUBDIVISION OF SECTION 3 SO 58958 AND PT LOT 1, PT LOT 2 AND LOT 3 DPS 36884		
Purpose	LT Subdivision		
Status	Deposited	Type	Survey
Land District	South Auckland	Survey Class	Class B
Meridional Circuit	Mount Eden 2000	Vertical Datum	None

Survey Dates

Surveyed Date	08/03/2023	Certified Date	27/09/2023
Submitted Date	27/09/2023 14:26:31	Survey Approval Date	29/09/2023
Deposit Date	05/09/2023		

Referenced Surveys

Survey Number	Land District	Bearing Correction
DP 10556	South Auckland	0°00'00"
DP 8108	South Auckland	0°00'00"
DPS 28108	South Auckland	0°00'00"
DPS 36884	South Auckland	0°00'00"
DPS 7036	South Auckland	0°00'00"
DPS 98	South Auckland	0°00'00"
SO 23812	South Auckland	0°00'00"
DP 27664	South Auckland	0°00'00"
DPS 2640	South Auckland	0°00'00"
ML 19271	South Auckland	
SO 58958	South Auckland	0°00'00"
DP 27607	South Auckland	0°00'00"
DP 513038	South Auckland	
DP 575053	South Auckland	
DP 413861	South Auckland	0°00'00"

Territorial Authorities

Waipa District



Record of Survey - DP 589546

Comprised In

RT SA35A/614
RT SA35A/615
RT SA58B/403

Created Parcels

Parcels	Parcel Intent	Area	RT Reference
Lot 1 Deposited Plan 589546	Fee Simple Title	195.3923 Ha	1123972
Lot 2 Deposited Plan 589546	Fee Simple Title	3.2129 Ha	1123973
Lot 3 Deposited Plan 589546	Fee Simple Title	2.3969 Ha	1123974
Lot 4 Deposited Plan 589546	Fee Simple Title	17.2430 Ha	1123975
Lot 5 Deposited Plan 589546	Fee Simple Title	3.5171 Ha	1123976
Area A Deposited Plan 589546	Easement		
Area B Deposited Plan 589546	Easement		
Area C Deposited Plan 589546	Easement		
Area E Deposited Plan 589546	Easement		
Total Area		<hr/> 221.7622 Ha	

Mark and Vector

Survey Number DP 589546

Meridional Circuit Mount Eden 2000

From	To	Code	Bearing	Adpt Surv	Bearing Correction	Distance	Adpt Surv	Class
IT I DPS 36884	IT XV DPS 36884	ob0	25°04'50" M			541.36 M		
IT XV DPS 36884	IT III SO 58958	ob4	105°52'55" M			421.23 M		
IT III SO 58958	IT II SO 58958	ob11	204°25'20" M			258.52 M		
IT II SO 58958	IT III DPS 36884	ob13	156°43'00" M			273.96 M		
IT III DPS 36884	IT VIII DPS 28108	ob19	193°34'50" M			247.12 M		
IT VIII DPS 28108	IP IV DP 27607	ob21	196°31'00" M			24.11 M		
IP IV DP 27607	IB A DP 589546	ob23	303°37'20" M			356.92 M		
IB A DP 589546	IT IV DPS 36884	ob28	28°41'40" M			317.45 M		
IT IV DPS 36884	IT I DPS 36884	ob48	256°42'10" M			438.12 M		
IB A DP 589546	IT I DPS 36884	ob29	302°58'10" M			326.53 M		
IB A DP 589546	IT III SO 58958	ob30	33°07'35" M			660.00 M		
IT II SO 58958	IT IV DPS 36884	ob14	249°01'20" M			108.60 M		
IT I DPS 36884	IT VII DPS 36884	ob1	315°44'50" A	DPS 36884	0°00'00"	486.55 A	DPS 36884	
IT VII DPS 36884	IT XV DPS 36884	ob76	76°00'10" A	DPS 36884	0°00'00"	586.40 A	DPS 36884	
IT I DPS 36884	IT VII SO 58958	ob2	35°47'55" A	SO 58958	0°00'00"	1,099.89 A	SO 58958	
IT VII SO 58958	IT VI SO 58958	ob75	124°34'10" A	SO 58958	0°00'00"	114.11 A	SO 58958	
IT VI SO 58958	IT V SO 58958	ob79	194°17'20" A	SO 58958	0°00'00"	135.18 A	SO 58958	
IT V SO 58958	IT IV SO 58958	ob80	194°32'30" A	SO 58958	0°00'00"	129.65 A	SO 58958	
IT IV SO 58958	IT III SO 58958	ob81	190°39'00" A	SO 58958	0°00'00"	199.21 A	SO 58958	
IT VII DPS 36884	IT XI DPS 36884	ob77	326°59'00" A	DPS 36884	0°00'00"	459.34 A	DPS 36884	
IT XI DPS 36884	IS XII DPS 36884	ob82	107°59'00" A	DPS 36884	0°00'00"	195.39 A	DPS 36884	
IS XII DPS 36884	IT XIII DPS 36884	ob84	89°43'10" A	DPS 36884	0°00'00"	152.45 A	DPS 36884	
IT XIII DPS 36884	IT XIV DPS 36884	ob85	94°07'10" A	DPS 36884	0°00'00"	317.63 A	DPS 36884	
IT XIV DPS 36884	IT XV DPS 36884	ob86	134°25'40" A	DPS 36884	0°00'00"	229.90 A	DPS 36884	
IT II SO 58958	PEG SO 58958	ob15	8°20'00" M			93.80 M		
IT II SO 58958	PEG SO 58958	ob16	167°08'00" M			27.06 M		
IT II SO 58958	PEG SO 58958	ob17	29°29'00" M			7.28 M		
IT II SO 58958	PEG SO 58958	ob18	13°08'00" M			13.53 M		
IT III SO 58958	PEG SO 58958	ob12	36°43'00" A	SO 58958	0°00'00"	17.44 A	SO 58958	
PEG SO 58958	PEG V DP 27664	ob88	213°32'00" A	DP 27664	0°00'00"	86.29 A	DP 575053	
PEG V DP 27664	PEG 4 DP 589546	ob89	213°32'00" A	DP 27664	0°00'00"	40.37 C		Class B
PEG 4 DP 589546	PEG SO 58958	ob160	213°32'00" A	DP 27664	0°00'00"	61.11 C		Class B

Mark and Vector

Survey Number DP 589546

Meridional Circuit Mount Eden 2000

From	To	Code	Bearing	Adpt Surv	Bearing Correction	Distance	Adpt Surv	Class
IT III DPS 36884	PEG SO 58958	ob20	218°41'00"	M		43.20 M		
IP IV DP 27607	PEG V DP 27607	ob24	328°05'00"	A DP 27607	0°00'00"	25.39 A DP 27607		
IT VIII DPS 28108	PEG V DP 27607	ob22	265°36'00"	A DPS 28108	0°00'00"	20.34 A DPS 28108		
IT VII DPS 36884	PEG DPS 36884	ob78	168°00'00"	A DPS 36884	0°00'00"	62.04 A DPS 36884		
IT I DPS 36884	PEG DPS 36884	ob3	311°23'10"	M		435.33 M		
PEG SO 58958	PEG SO 58958	ob87	187°31'30"	A SO 58958	0°00'00"	80.33 A SO 58958		Class B
PEG SO 58958	PEG SO 58958	ob223	175°43'00"	A SO 58958	0°00'00"	6.85 A SO 58958		Class B
PEG SO 58958	PEG SO 58958	ob222	175°43'00"	A SO 58958	0°00'00"	18.03 A SO 58958		Class B
PEG SO 58958	PEG SO 58958	ob100	175°43'00"	A SO 58958	0°00'00"	14.78 A SO 58958		Class B
PEG SO 58958	UNMK U18 DP 589546	ob96	161°15'00"	A SO 58958	0°00'00"	11.35 C		Class B
UNMK U18 DP 589546	UNMK U19 DP 589546	ob227	161°15'00"	A SO 58958	0°00'00"	6.19 C		Class B
UNMK U19 DP 589546	PEG SO 58958	ob228	161°15'00"	A SO 58958	0°00'00"	24.44 C		Class B
PEG SO 58958	PEG 3 DP 589546	ob101	161°15'00"	A DP 10556	0°00'00"	7.87 C		Class B
PEG 3 DP 589546	PEG SO 58958	ob159	161°15'00"	A DP 10556	0°00'00"	164.08 C		Class B
PEG SO 58958	PEG SO 58958	ob102	173°26'20"	A SO 58958	0°00'00"	3.88 A SO 58958		Class B
PEG SO 58958	PEG 2 DP 589546	ob103	173°26'20"	A SO 58958	0°00'00"	8.81 C		Class B
PEG 2 DP 589546	PEG SO 58958	ob158	173°26'20"	A SO 58958	0°00'00"	44.06 C		Class B
PEG SO 58958	PEG SO 58958	ob97	183°58'40"	A SO 58958	0°00'00"	56.86 A SO 58958		Class B
PEG SO 58958	PEG SO 58958	ob104	197°21'30"	A SO 58958	0°00'00"	75.05 A SO 58958		Class B
PEG SO 58958	UNMK SO 23812	ob105	197°24'00"	A SO 23812	0°00'00"	4.10 A SO 23812		Class B
UNMK SO 23812	PEG V DP 27607	ob106	197°24'00"	A SO 23812	0°00'00"	79.43 C		Class B
PEG V DP 27607	BS 1 DP 589546	ob98	197°24'00"	A SO 23812	0°00'00"	1.74 C		Class B
BS 1 DP 589546	PEG SO 23812	ob95	197°24'00"	A SO 23812	0°00'00"	237.21 C		Class B
PEG SO 23812	PEG SO 4950B	ob93	142°43'00"	A DP 27607	0°00'00"	59.93 A DP 27607		
PEG SO 4950B	PEG XV SO 4950B	ob107	264°32'00"	A DP 27607	0°00'00"	22.83 A DP 27607		
PEG XV SO 4950B	PEG (3) DP 27607	ob108	318°02'00"	A DP 27607	0°00'00"	10.66 A DP 27607		
UNMK SO 23812	PEG DP 8108	ob110	318°02'30"	A DP 8108	0°00'00"	1.82 C		Class B
PEG DP 8108	PEG 5 DP 589546	ob112	318°02'30"	A DP 8108	0°00'00"	214.83 C		Class B
PEG 5 DP 589546	PEG DP 8108	ob162	318°02'30"	A DP 8108	0°00'00"	224.42 C		Class B

Mark and Vector

Survey Number DP 589546

Meridional Circuit Mount Eden 2000

From	To	Code	Bearing	Adpt Surv	Bearing Correction	Distance	Adpt Surv	Class
PEG DP 8108	PEG 6 DP 589546	ob113	318°02'30"	A DP 8108	0°00'00"	106.87 C		Class B
PEG 6 DP 589546	PEG DP 8108	ob164	318°02'30"	A DP 8108	0°00'00"	209.57 C		Class B
PEG DP 8108	PEG DPS 36884	ob114	318°02'30"	A DP 8108	0°00'00"	440.98 A DP 8108		Class B
PEG V DP 27664	UNMK U1 DP 589546	ob90	299°21'40"	A DP 27664	0°00'00"	295.25 C		Class B
UNMK U1 DP 589546	UNMK DP 27664	ob178	299°21'40"	A DP 27664	0°00'00"	7.09 C		Class B
UNMK DP 27664	UNMK DPS 36884	ob91	299°21'40"	A DP 27664	0°00'00"	21.22 A DP 575053		Class BD
UNMK DPS 36884	IT XV DPS 36884	ob92	279°38'00"	C		87.15 C		
IT XI DPS 36884	IS III DPS 2640	ob83	255°09'50"	A DPS 36884	0°00'00"	262.67 A DPS 36884		
IS III DPS 2640	PEG DPS 2640	ob213	170°06'00"	A DPS 2640	0°00'00"	15.17 A DPS 2640		
PEG DPS 2640	PEG DPS 2640	ob214	67°44'40"	A DPS 2640	0°00'00"	187.57 A DPS 2640		Class B
PEG DPS 2640	UNMK DP 27664	ob215	161°55'00"	A DP 27664	0°00'00"	16.15 A DP 575053		Class BD
UNMK DP 27664	PEG XVII DP 27664	ob216	161°55'00"	A DP 27664	0°00'00"	32.19 A DP 27664		
PEG XVII DP 27664	PEG XVI DP 27664	ob217	67°18'00"	A DP 27664	0°00'00"	168.58 A DP 27664		
PEG XVI DP 27664	PEG XV DP 27664	ob218	93°49'30"	A DP 27664	0°00'00"	101.79 A DP 27664		
PEG XV DP 27664	PEG XIV DP 27664	ob219	143°30'30"	A DP 27664	0°00'00"	96.64 A DP 27664		
PEG XIV DP 27664	IS XII DPS 36884	ob220	283°49'00"	A DPS 36884	0°00'00"	68.04 A DPS 36884		
PEG DPS 36884	PEG IC DP 8108	ob99	228°01'00"	A DP 8108	0°00'00"	183.83 A DP 8108		Class B
PEG IC DP 8108	PEG DPS 98	ob115	227°59'30"	A DPS 98	0°00'00"	268.70 A DPS 98		Class B
PEG DPS 98	PEG IA DP 8108	ob116	228°00'30"	A DPS 98	0°00'00"	244.10 A DPS 98		Class B
PEG IA DP 8108	PEG (5) DPS 98	ob117	228°04'00"	A DPS 98	0°00'00"	348.18 A DPS 98		Class B
PEG (5) DPS 98	PEG (1) DPS 98	ob118	315°01'50"	A DPS 98	0°00'00"	269.38 A DPS 98		Class B
PEG (1) DPS 98	PEG (4) DPS 98	ob119	315°05'30"	A DPS 98	0°00'00"	289.34 A DPS 98		Class B
PEG (4) DPS 98	UNMK 7 DP 513038	ob120	321°47'20"	A DPS 98	0°00'00"	32.57 A DP 513038		Class B
UNMK 7 DP 513038	UNMK 6 DP 513038	ob224	321°47'20"	A DPS 98	0°00'00"	3.52 A DP 513038		Class B
UNMK 6 DP 513038	PEG (3) DPS 98	ob225	321°47'20"	A DPS 98	0°00'00"	793.43 A DP 513038		Class B
PEG (3) DPS 98	PEG (2) DPS 98	ob121	323°44'30"	A DPS 98	0°00'00"	248.28 A DPS 98		Class B
PEG (2) DPS 98	PEG DPS 7036	ob226	323°44'30"	A DPS 98	0°00'00"	75.76 A DPS 7036		Class B
PEG DPS 7036	IT II DPS 7036	ob122	49°36'00"	A DPS 7036	0°00'00"	1.29 A DPS 7036		Class B
PEG III DPS 7036	PEG IV DPS 7036	ob123	47°57'00"	A DPS 7036	0°00'00"	28.81 A DPS 7036		Class B

Mark and Vector

Survey Number DP 589546

Meridional Circuit Mount Eden 2000

From	To	Code	Bearing	Adpt Surv	Bearing Correction	Distance	Adpt Surv	Class
PEG IV DPS 7036	PEG V DPS 7036	ob124	47°37'00"	A DPS 7036	0°00'00"	80.75 A	DPS 7036	Class B
PEG V DPS 7036	PEG VI DPS 7036	ob125	330°55'00"	A DPS 7036	0°00'00"	98.13 A	DPS 7036	Class B
PEG VI DPS 7036	PEG VII DPS 7036	ob126	330°59'00"	A DPS 7036	0°00'00"	100.79 A	DPS 7036	Class B
PEG VII DPS 7036	IT VIII DPS 7036	ob127	332°00'00"	A DPS 7036	0°00'00"	31.00 A	DPS 7036	Class B
IT VIII DPS 7036	PEG IX DPS 7036	ob128	328°54'00"	A DPS 7036	0°00'00"	42.93 A	DPS 7036	Class B
PEG IX DPS 7036	PEG X DPS 7036	ob129	46°41'00"	A DPS 7036	0°00'00"	51.88 A	DPS 7036	Class B
PEG X DPS 7036	PEG XI DPS 7036	ob130	48°43'00"	A DPS 7036	0°00'00"	47.07 A	DPS 7036	Class B
PEG XI DPS 7036	PEG XII DPS 7036	ob131	48°33'00"	A DPS 7036	0°00'00"	81.13 A	DPS 7036	Class B
PEG XII DPS 7036	PEG DPS 7036	ob132	58°56'00"	A DPS 7036	0°00'00"	75.52 A	DPS 7036	Class B
PEG DPS 7036	PEG XXXV DP 27664	ob133	133°11'00"	A DP 27664	0°00'00"	44.38 A	DPS 7036	Class B
PEG XXXV DP 27664	PEG XXXIV DP 27664	ob134	131°03'00"	A DP 27664	0°00'00"	69.44 A	DP 27664	Class B
PEG XXXIV DP 27664	PEG XXXIII DP 27664	ob135	131°37'00"	A DP 27664	0°00'00"	38.70 A	DP 27664	Class B
PEG XXXIII DP 27664	PEG XXXII DP 27664	ob136	132°16'00"	A DP 27664	0°00'00"	61.72 A	DP 27664	Class B
PEG XXXII DP 27664	PEG XXXI DP 27664	ob137	131°49'00"	A DP 27664	0°00'00"	71.05 A	DP 27664	Class B
PEG XXXI DP 27664	PEG XXX DP 27664	ob138	131°51'00"	A DP 27664	0°00'00"	52.75 A	DP 27664	Class B
PEG XXX DP 27664	PEG XXIX DP 27664	ob139	131°40'00"	A DP 27664	0°00'00"	43.29 A	DP 27664	Class B
PEG XXIX DP 27664	PEG XXVII DP 27664	ob140	132°16'00"	A DP 27664	0°00'00"	55.44 A	DP 27664	Class B
PEG XXVII DP 27664	PEG XXVI DP 27664	ob141	131°43'00"	A DP 27664	0°00'00"	65.38 A	DP 27664	Class B
PEG XXVI DP 27664	PEG XXV DP 27664	ob142	131°44'00"	A DP 27664	0°00'00"	49.21 A	DP 27664	Class B
PEG XXV DP 27664	PEG XXIV DP 27664	ob143	132°18'00"	A DP 27664	0°00'00"	46.93 A	DP 27664	Class B
PEG XXIV DP 27664	PEG XXIII DP 27664	ob144	131°56'00"	A DP 27664	0°00'00"	37.94 A	DP 27664	Class B
PEG XXIII DP 27664	PEG XXII DP 27664	ob145	135°43'00"	A DP 27664	0°00'00"	39.23 A	DP 27664	Class B
PEG XXII DP 27664	PEG XXI DP 27664	ob146	133°44'00"	A DP 27664	0°00'00"	50.43 A	DP 27664	Class B
PEG XXI DP 27664	PEG DPS 2640	ob147	133°13'30"	A DP 27664	0°00'00"	362.40 A	DPS 2640	Class B

Mark and Vector

Survey Number DP 589546

Meridional Circuit Mount Eden 2000

From	To	Code	Bearing	Adpt Surv	Bearing Correction	Distance	Adpt Surv	Class
PEG DPS 2640	PEG DPS 2640	ob148	100°12'20"	A DPS 2640	0°00'00"	57.92 A	DPS 2640	Class B
PEG DPS 2640	PEG DPS 2640	ob149	92°00'40"	A DPS 2640	0°00'00"	309.11 A	DPS 2640	Class B
PEG XIV DP 27664	PEG XIII DP 27664	ob221	55°11'00"	A DP 27664	0°00'00"	105.53 A	DP 27664	
PEG XIII DP 27664	PEG XII DP 27664	ob150	125°53'00"	A DP 27664	0°00'00"	134.86 A	DP 27664	
PEG XII DP 27664	PEG XI DP 27664	ob151	27°40'00"	A DP 27664	0°00'00"	89.14 A	DP 27664	
PEG XI DP 27664	PEG X DP 27664	ob152	107°45'20"	A DP 27664	0°00'00"	131.99 A	DP 27664	
PEG X DP 27664	PEG IX DP 27664	ob153	157°00'00"	A DP 27664	0°00'00"	53.77 A	DP 27664	
PEG IX DP 27664	PEG VIII DP 27664	ob154	77°46'15"	A DP 27664	0°00'00"	191.43 A	DP 27664	
PEG VIII DP 27664	PEG VII DP 27664	ob155	132°28'00"	A DP 27664	0°00'00"	78.72 A	DP 27664	
PEG VII DP 27664	PEG VI DP 27664	ob156	175°50'30"	A DP 27664	0°00'00"	131.79 A	DP 27664	
PEG VI DP 27664	UNMK DPS 36884	ob157	119°21'40"	A DP 27664	0°00'00"	17.00 A	DPS 36884	
IB A DP 589546	PEG 5 DP 589546	ob31	168°07'50"	M		270.24 M		
IB A DP 589546	PEG 6 DP 589546	ob32	263°45'00"	M		166.81 M		
IB A DP 589546	DISC 19 DP 589546	ob33	265°33'20"	M		167.01 M		
IB A DP 589546	DISC 20 DP 589546	ob34	280°34'20"	M		146.82 M		
IB A DP 589546	DISC 21 DP 589546	ob35	305°00'00"	M		115.21 M		
IB A DP 589546	DISC 22 DP 589546	ob36	339°39'50"	M		164.20 M		
IB A DP 589546	DISC 23 DP 589546	ob37	342°22'20"	M		172.40 M		
IB A DP 589546	DISC 24 DP 589546	ob38	346°11'10"	M		187.48 M		
IB A DP 589546	DISC 25 DP 589546	ob39	348°05'50"	M		205.19 M		
IB A DP 589546	DISC 26 DP 589546	ob40	349°07'40"	M		209.74 M		
IB A DP 589546	DISC 27 DP 589546	ob41	351°46'40"	M		220.27 M		
IB A DP 589546	DISC 28 DP 589546	ob42	356°05'20"	M		235.44 M		
IB A DP 589546	DISC 29 DP 589546	ob43	357°06'00"	M		240.42 M		
IB A DP 589546	DISC 30 DP 589546	ob44	359°46'20"	M		271.65 M		

Mark and Vector

Survey Number DP 589546

Meridional Circuit Mount Eden 2000

From	To	Code	Bearing	Adpt Surv	Bearing Correction	Distance	Adpt Surv	Class
IB A DP 589546	DISC 31 DP 589546	ob45	0°47'30" M			273.98 M		
IB A DP 589546	DISC 32 DP 589546	ob46	4°25'35" M			306.45 M		
IB A DP 589546	DISC 33 DP 589546	ob47	6°25'10" M			331.40 M		
IP IV DP 27607	BS 1 DP 589546	ob25	324°58'00" M			24.29 M		
IP IV DP 27607	PEG 34 DP 589546	ob26	301°50'00" M			49.61 M		
IP IV DP 27607	PEG 35 DP 589546	ob27	310°37'40" M			125.58 M		
IT IV DPS 36884	PEG 2 DP 589546	ob49	138°46'20" M			269.53 M		
IT IV DPS 36884	PEG 3 DP 589546	ob50	105°42'20" M			128.22 M		
IT IV DPS 36884	PEG 4 DP 589546	ob51	39°09'20" M			235.54 M		
IT IV DPS 36884	PEG 7 DP 589546	ob52	31°17'00" M			232.10 M		
IT IV DPS 36884	PEG 8 DP 589546	ob53	353°56'30" M			170.19 M		
IT IV DPS 36884	PEG 9 DP 589546	ob54	331°16'30" M			228.50 M		
IT IV DPS 36884	PEG 10 DP 589546	ob55	331°01'00" M			234.43 M		
IT IV DPS 36884	DISC 11 DP 589546	ob56	311°51'20" M			109.60 M		
IT IV DPS 36884	DISC 12 DP 589546	ob57	144°21'00" M			85.01 M		
IT IV DPS 36884	DISC 13 DP 589546	ob58	141°19'30" M			207.36 M		
IT IV DPS 36884	DISC 14 DP 589546	ob59	141°26'50" M			246.39 M		
IT IV DPS 36884	DISC 15 DP 589546	ob60	141°03'30" M			253.40 M		
IT IV DPS 36884	DISC 16 DP 589546	ob61	140°34'10" M			258.74 M		
IT IV DPS 36884	DISC 17 DP 589546	ob62	139°55'10" M			263.68 M		
IT IV DPS 36884	PEG 18 DP 589546	ob63	107°46'00" M			121.58 M		
PEG 5 DP 589546	PEG 35 DP 589546	ob163	44°33'20" C			208.54 C		Class B
PEG 35 DP 589546	PEG 34 DP 589546	ob212	136°17'00" C			76.93 C		Class B
PEG 34 DP 589546	BS 1 DP 589546	ob211	102°33'00" C			28.89 C		Class B

Mark and Vector

Survey Number DP 589546

Meridional Circuit Mount Eden 2000

From	To	Code	Bearing	Adpt Surv	Bearing Correction	Distance	Adpt Surv	Class
PEG 6 DP 589546	DISC 19 DP 589546	ob165	352°26'00"	C		5.26 C		Class B
DISC 19 DP 589546	DISC 20 DP 589546	ob196	29°05'00"	C		45.63 C		Class B
DISC 20 DP 589546	DISC 21 DP 589546	ob197	51°55'00"	C		63.46 C		Class B
DISC 21 DP 589546	DISC 22 DP 589546	ob198	23°00'00"	C		95.48 C		Class B
DISC 22 DP 589546	DISC 23 DP 589546	ob199	25°09'00"	C		11.42 C		Class B
DISC 23 DP 589546	DISC 24 DP 589546	ob200	22°45'00"	C		19.25 C		Class B
DISC 24 DP 589546	DISC 25 DP 589546	ob201	7°26'00"	C		18.88 C		Class B
DISC 25 DP 589546	DISC 26 DP 589546	ob202	27°58'00"	C		5.88 C		Class B
DISC 26 DP 589546	DISC 27 DP 589546	ob203	33°49'00"	C		14.48 C		Class B
DISC 27 DP 589546	DISC 28 DP 589546	ob204	42°27'00"	C		22.88 C		Class B
DISC 28 DP 589546	DISC 29 DP 589546	ob205	36°44'00"	C		6.51 C		Class B
DISC 29 DP 589546	UNMK U26 DP 589546	ob206	19°22'00"	C		14.06 C		Class B
UNMK U26 DP 589546	UNMK U27 DP 589546	ob232	19°22'00"	C		6.55 C		Class B
UNMK U27 DP 589546	DISC 30 DP 589546	ob234	19°22'00"	C		12.82 C		Class B
DISC 30 DP 589546	DISC 31 DP 589546	ob207	64°38'00"	C		5.38 C		Class B
DISC 31 DP 589546	DISC 32 DP 589546	ob208	32°10'00"	C		37.31 C		Class B
DISC 32 DP 589546	DISC 33 DP 589546	ob209	29°24'00"	C		27.30 C		Class B
DISC 33 DP 589546	DISC 11 DP 589546	ob210	56°34'00"	C		40.42 C		Class B
DISC 11 DP 589546	UNMK U28 DP 589546	ob170	137°18'40"	C		109.50 C		Class B
UNMK U28 DP 589546	UNMK U25 DP 589546	ob238	137°18'40"	C		7.64 C		Class B
UNMK U25 DP 589546	DISC 12 DP 589546	ob236	137°18'40"	C		76.33 C		Class B
DISC 12 DP 589546	DISC 13 DP 589546	ob171	139°13'40"	C		122.55 C		Class B
DISC 13 DP 589546	DISC 14 DP 589546	ob172	142°06'00"	C		39.03 C		Class B
DISC 14 DP 589546	DISC 15 DP 589546	ob173	127°39'00"	C		7.21 C		Class B

Mark and Vector

Survey Number DP 589546

Meridional Circuit Mount Eden 2000

From	To	Code	Bearing	Adpt Surv	Bearing Correction	Distance	Adpt Surv	Class
DISC 15 DP 589546	DISC 16 DP 589546	ob174	118°34'00"	C		5.77 C		Class B
DISC 16 DP 589546	DISC 17 DP 589546	ob175	109°17'00"	C		5.76 C		Class B
DISC 17 DP 589546	PEG 2 DP 589546	ob176	96°58'00"	C		7.91 C		Class B
UNMK U1 DP 589546	UNMK U2 DP 589546	ob179	174°11'00"	C		6.40 C		Class B
UNMK U2 DP 589546	UNMK U3 DP 589546	ob180	208°10'00"	C		12.29 C		Class B
UNMK U3 DP 589546	UNMK U4 DP 589546	ob181	223°42'00"	C		29.83 C		Class B
UNMK U4 DP 589546	UNMK U5 DP 589546	ob182	208°24'00"	C		31.24 C		Class B
UNMK U5 DP 589546	UNMK U6 DP 589546	ob183	181°46'00"	C		51.91 C		Class B
UNMK U6 DP 589546	PEG 10 DP 589546	ob184	158°30'00"	C		40.71 C		Class B
PEG 10 DP 589546	PEG 9 DP 589546	ob169	141°10'00"	C		6.02 C		Class B
PEG 9 DP 589546	UNMK U7 DP 589546	ob168	125°00'00"	C		18.00 C		Class B
UNMK U7 DP 589546	UNMK U8 DP 589546	ob185	73°13'00"	C		9.34 C		Class B
UNMK U8 DP 589546	UNMK U9 DP 589546	ob186	124°00'00"	C		51.60 C		Class B
UNMK U9 DP 589546	UNMK U10 DP 589546	ob187	152°24'00"	C		9.40 C		Class B
UNMK U10 DP 589546	UNMK U11 DP 589546	ob188	195°28'00"	C		44.50 C		Class B
UNMK U11 DP 589546	UNMK U12 DP 589546	ob189	142°37'00"	C		26.52 C		Class B
UNMK U12 DP 589546	UNMK U13 DP 589546	ob190	103°17'00"	C		9.00 C		Class B
UNMK U13 DP 589546	UNMK U14 DP 589546	ob191	121°57'00"	C		10.90 C		Class B
UNMK U14 DP 589546	UNMK U15 DP 589546	ob192	95°26'00"	C		12.00 C		Class B
UNMK U15 DP 589546	UNMK U16 DP 589546	ob193	137°03'00"	C		11.18 C		Class B
UNMK U16 DP 589546	UNMK U17 DP 589546	ob194	147°08'00"	C		60.72 C		Class B
UNMK U17 DP 589546	UNMK U29 DP 589546	ob195	127°07'00"	C		41.35 C		Class B
UNMK U29 DP 589546	UNMK U24 DP 589546	ob242	127°07'00"	C		9.05 C		Class B
UNMK U24 DP 589546	PEG 18 DP 589546	ob240	127°07'00"	C		49.95 C		Class B

Mark and Vector

Survey Number DP 589546

Meridional Circuit Mount Eden 2000

From	To	Code	Bearing	Adpt Surv	Bearing Correction	Distance	Adpt Surv	Class
PEG 18 DP 589546	PEG 3 DP 589546	ob177	72°39'00"	C		8.01 C		Class B
PEG 4 DP 589546	PEG 7 DP 589546	ob161	299°07'00"	C		32.28 C		Class B
PEG 7 DP 589546	PEG 8 DP 589546	ob166	258°07'30"	C		141.51 C		Class B
PEG 8 DP 589546	UNMK U9 DP 589546	ob167	258°07'30"	C		25.95 C		Class B
IT XV DPS 36884	UNMK U1 DP 589546	ob5	104°26'00"	C		114.20 C		
IT XV DPS 36884	UNMK U2 DP 589546	ob6	107°23'20"	C		116.57 C		
IT XV DPS 36884	UNMK U3 DP 589546	ob7	113°25'00"	C		114.91 C		
IT XV DPS 36884	UNMK U4 DP 589546	ob8	128°24'00"	C		108.25 C		
IT XV DPS 36884	UNMK U5 DP 589546	ob9	143°32'40"	C		117.76 C		
IT XV DPS 36884	UNMK U6 DP 589546	ob10	154°59'40"	C		161.76 C		
IT IV DPS 36884	UNMK U7 DP 589546	ob64	333°25'30"	C		212.51 C		
IT IV DPS 36884	UNMK U8 DP 589546	ob65	335°55'20"	C		211.12 C		
IT IV DPS 36884	UNMK U9 DP 589546	ob66	345°11'00"	C		169.54 C		
IT IV DPS 36884	UNMK U10 DP 589546	ob67	345°55'40"	C		160.38 C		
IT IV DPS 36884	UNMK U11 DP 589546	ob68	335°42'20"	C		123.63 C		
IT IV DPS 36884	UNMK U12 DP 589546	ob69	339°13'00"	C		97.98 C		
IT IV DPS 36884	UNMK U13 DP 589546	ob70	343°48'30"	C		93.24 C		
IT IV DPS 36884	UNMK U14 DP 589546	ob71	348°41'30"	C		85.43 C		
IT IV DPS 36884	UNMK U15 DP 589546	ob72	356°40'00"	C		82.78 C		
IT IV DPS 36884	UNMK U16 DP 589546	ob73	2°09'30"	C		74.51 C		
IT IV DPS 36884	UNMK U17 DP 589546	ob74	56°44'00"	C		42.77 C		
UNMK U19 DP 589546	UNMK U24 DP 589546	ob229	265°36'00"	C		37.20 C		Class B
UNMK U24 DP 589546	UNMK U25 DP 589546	ob241	265°36'00"	C		78.39 C		Class B
UNMK U25 DP 589546	UNMK U26 DP 589546	ob237	265°36'00"	C		158.18 C		Class B

Mark and Vector

Survey Number DP 589546

Meridional Circuit Mount Eden 2000

From	To	Code	Bearing	Adpt Surv	Bearing Correction	Distance	Adpt Surv	Class
UNMK U26 DP 589546	UNMK U21 DP 589546	ob233	265°36'00"	C		115.12 C		Class B
UNMK U21 DP 589546	UNMK U22 DP 589546	ob230	355°36'00"	C		6.00 C		Class B
UNMK U22 DP 589546	UNMK U27 DP 589546	ob231	85°36'00"	C		117.75 C		Class B
UNMK U27 DP 589546	UNMK U28 DP 589546	ob235	85°36'00"	C		150.81 C		Class B
UNMK U28 DP 589546	UNMK U29 DP 589546	ob239	85°36'00"	C		76.35 C		Class B
UNMK U29 DP 589546	UNMK U18 DP 589546	ob243	85°36'00"	C		42.44 C		Class B
IT II DPS 7036	PEG III DPS 7036	ob244	49°36'00"	A	DPS 7036	0°00'00"	60.99 A	DPS 7036 Class B
PEG 12 DP 413861	PEG DPS 28108	ob246	17°24'00"	A	SO 23812	0°00'00"	125.40 A	DP 413861
PEG SO 23812	PEG 12 DP 413861	ob245	17°24'00"	A	SO 23812	0°00'00"	105.62 A	DP 413861
PEG (3) DP 27607	PEG SO 23812	ob109	19°39'00"	A	SO 23812	0°00'00"	36.03 A	DP 27607
PEG DPS 28108	IT VIII DPS 28108	ob247	13°24'00"	A	DP 413861	0°00'00"	17.62 A	DP 413861
UNMK SO 23812	PEG (3) DP 27607	ob111	138°02'30"	A	DP 8108	0°00'00"	27.55 C	
PEG SO 23812	UNMK SO 23812	ob94	209°10'00"	A	SO 23812	0°00'00"	24.56 C	Class B

Mark Name	Mark Condition	Description
BS 1 DP 589546		Boundary spike in driveway. 4.7 E of fence.
DISC 11 DP 589546		Disc on post
DISC 12 DP 589546		Disc on post
DISC 13 DP 589546		Disc on post
DISC 14 DP 589546		Disc on post
DISC 15 DP 589546		Disc on post
DISC 16 DP 589546		Disc on post
DISC 17 DP 589546		Disc on post
DISC 19 DP 589546		Disc on post
DISC 20 DP 589546		Disc on post
DISC 21 DP 589546		Disc on post
DISC 22 DP 589546		Disc on post
DISC 23 DP 589546		Disc on post
DISC 24 DP 589546		Disc on post

Mark and Vector

Survey Number DP 589546
Meridional Circuit Mount Eden 2000

Mark Name	Mark Condition	Description
DISC 25 DP 589546		Disc on post
DISC 26 DP 589546		Disc on post
DISC 27 DP 589546		Disc on post
DISC 28 DP 589546		Disc on post
DISC 29 DP 589546		Disc on post
DISC 30 DP 589546		Disc on post
DISC 31 DP 589546		Disc on post
DISC 32 DP 589546		Disc on post
DISC 33 DP 589546		Disc on post
IB A DP 589546		In paddock near top of hill. 0.3d.
IP IV DP 27607		In berm. 1.0 NW of corner post. 0.3d
IT I DPS 36884		On rocky outcrop. 0.2m above ground
IT II SO 58958		In paddock. 4.0 W of fence. 0.3d
IT III DPS 36884		In paddock. 10m E of fence. 0.1d
IT III SO 58958		In paddock. 0.5 W of fence. 0.3d
IT IV DPS 36884		In paddock. 4.0 N of fence. 0.4d.
IT VIII DPS 28108		In berm. 2.7 S of corner post. 1.7 E of seal edge. 0.1d
IT XV DPS 36884		In paddock. 1.0 S of corner post. 0.2d
PEG 10 DP 589546		0.7 NW of fence
PEG 18 DP 589546		In paddock. 7.9 W of fence.
PEG 2 DP 589546		2.2 E of fence.
PEG 3 DP 589546		0.1 E of fence
PEG 34 DP 589546		In paddock. 5.0 S of fence.
PEG 35 DP 589546		0.2 E of fence
PEG 4 DP 589546		In driveway. 4.6 E of fence
PEG 5 DP 589546		0.7 NE of fence.
PEG 6 DP 589546		In fenceline
PEG 7 DP 589546		In paddock. 5.1 N of fence
PEG 8 DP 589546		On top of bank. 8.0 E of fence
PEG 9 DP 589546		0.8 SE of fence
PEG DPS 36884		Southern base of post
PEG SO 58958		Northern base of post
PEG SO 58958		In fenceline
PEG SO 58958		Eastern base of post.
PEG SO 58958		6.0 W of fence. 0.3d



Mark and Vector

Survey Number DP 589546
Meridional Circuit Mount Eden 2000

Mark Name	Mark Condition	Description
PEG SO 23812	Searched For and Not Found	
PEG SO 58958	Searched For and Not Found	
PEG V DP 27607	Searched For and Not Found	
PEG V DP 27664	Searched For and Not Found	

***** End of Report *****

Schedule / Memorandum

Land Registration District

South Auckland

Survey Number

LT 589546

Territorial Authority (the Council)

Waipa District

Memorandum of Easements

Last Edited: 30 Mar 2023 15:49:42

<u>Purpose</u>	<u>Shown</u>	<u>Burdened Land</u> (<u>Servient Tenement</u>)	<u>Benefited Land</u> (<u>Dominant Tenement</u>)
Right to convey electricity	A	Lot 1	Lot 4

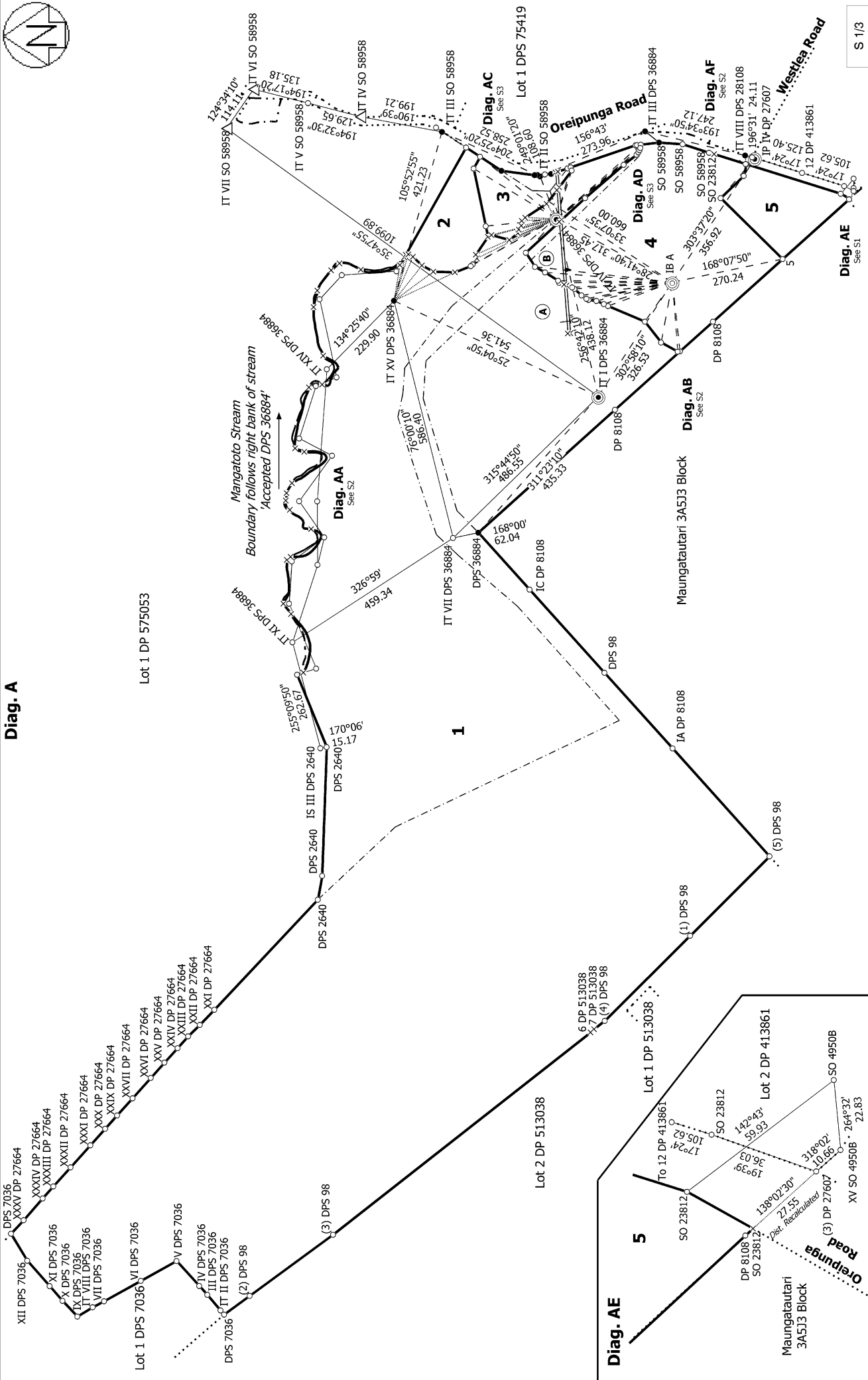
Memorandum of Easements in Gross

Last Edited: 30 Mar 2023 15:51:13

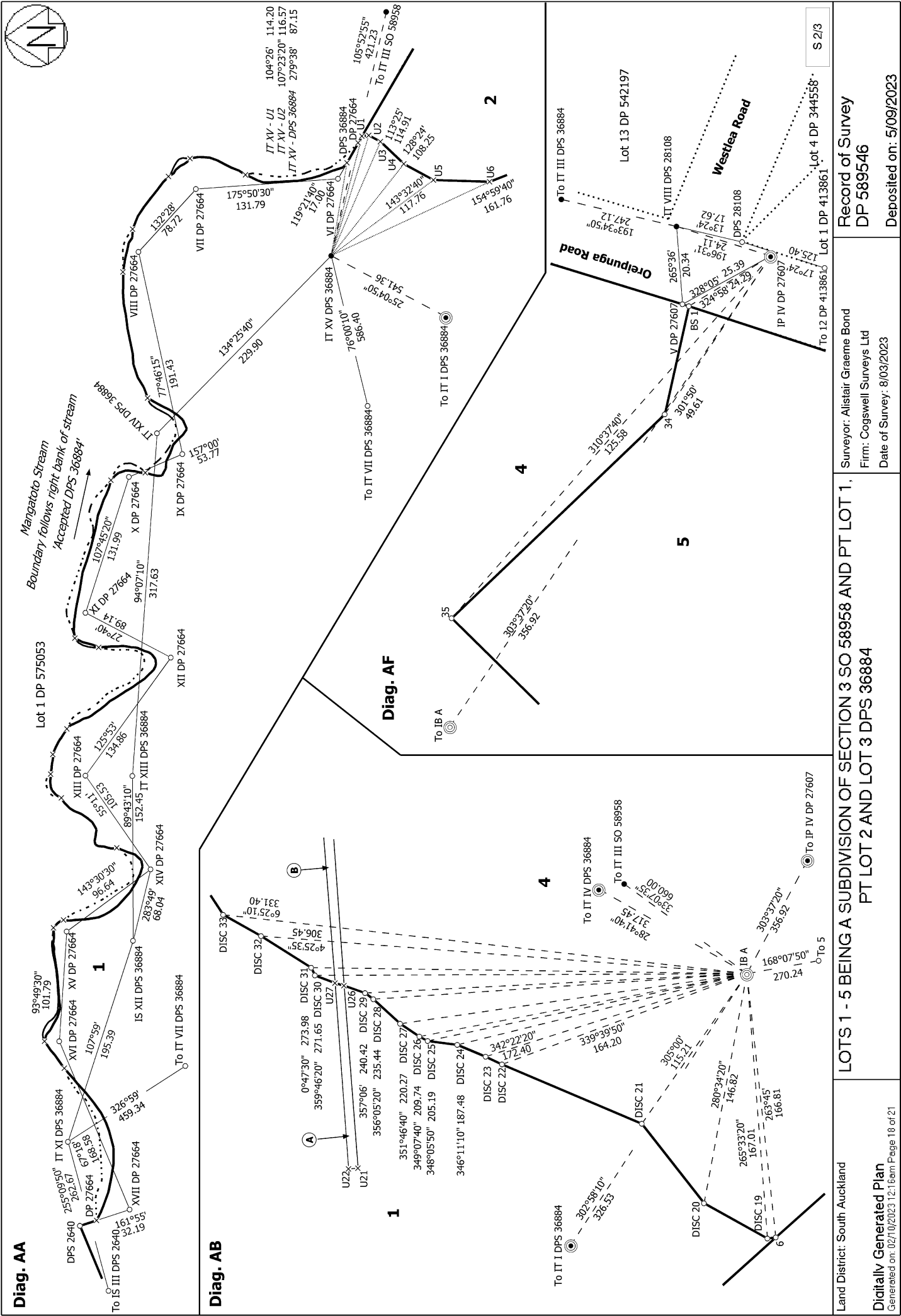
<u>Purpose</u>	<u>Shown</u>	<u>Burdened Land</u> (<u>Servient Tenement</u>)	<u>Grantee</u>
Right to convey electricity	A, C	Lot 1	Powerco Limited
	B	Lot 4	Powerco Limited
	E	Lot 3	Powerco Limited



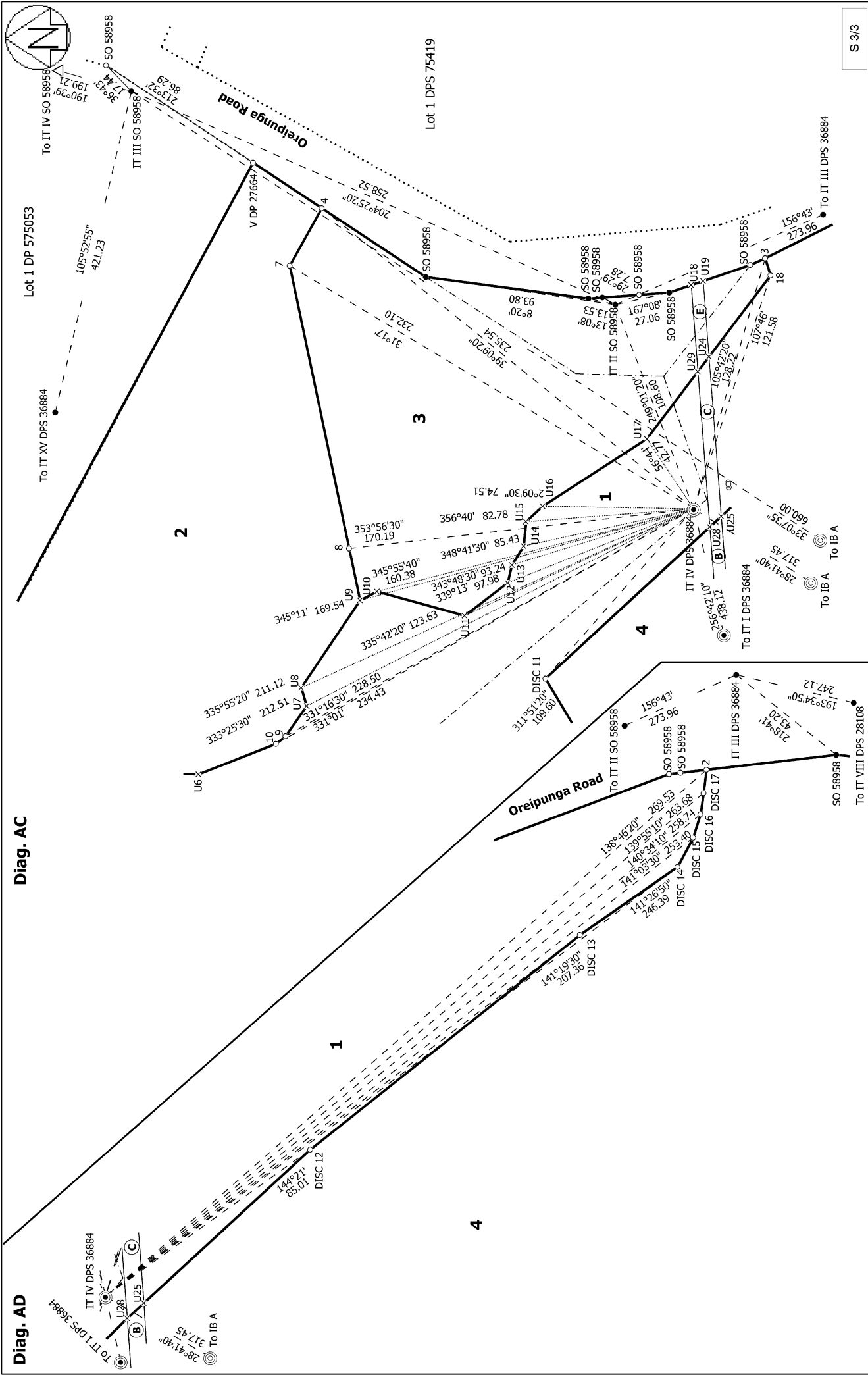
Diag. A



Land District: South Auckland	Surveyor: Alistair Graeme Bond Firm: Cogswell Surveys Ltd Date of Survey: 8/03/2023	Record of Survey DP 589546 Deposited on: 5/09/2023
<p>LOTS 1 - 5 BEING A SUBDIVISION OF SECTION 3 SO 58958 AND PT LOT 1, PT LOT 2 AND LOT 3 DPS 36884</p>		<p>Diag. A</p> <p>Generated on: 02/10/2023 12:12:00 Page 17 of 21</p>



Land District: South Auckland	LOTS 1 - 5 BEING A SUBDIVISION OF SECTION 3 SO 58958 AND PT LOT 1, PT LOT 2 AND LOT 3 DPS 36884	
Digitally Generated Plan Generated on: 02/10/2023 12:16pm Page 18 of 21	Surveyor: Alistair Graeme Bond Firm: Cogswell Surveys Ltd Date of Survey: 8/03/2023	Record of Survey DP 589546 Deposited on: 5/09/2023

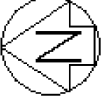


S 3/3

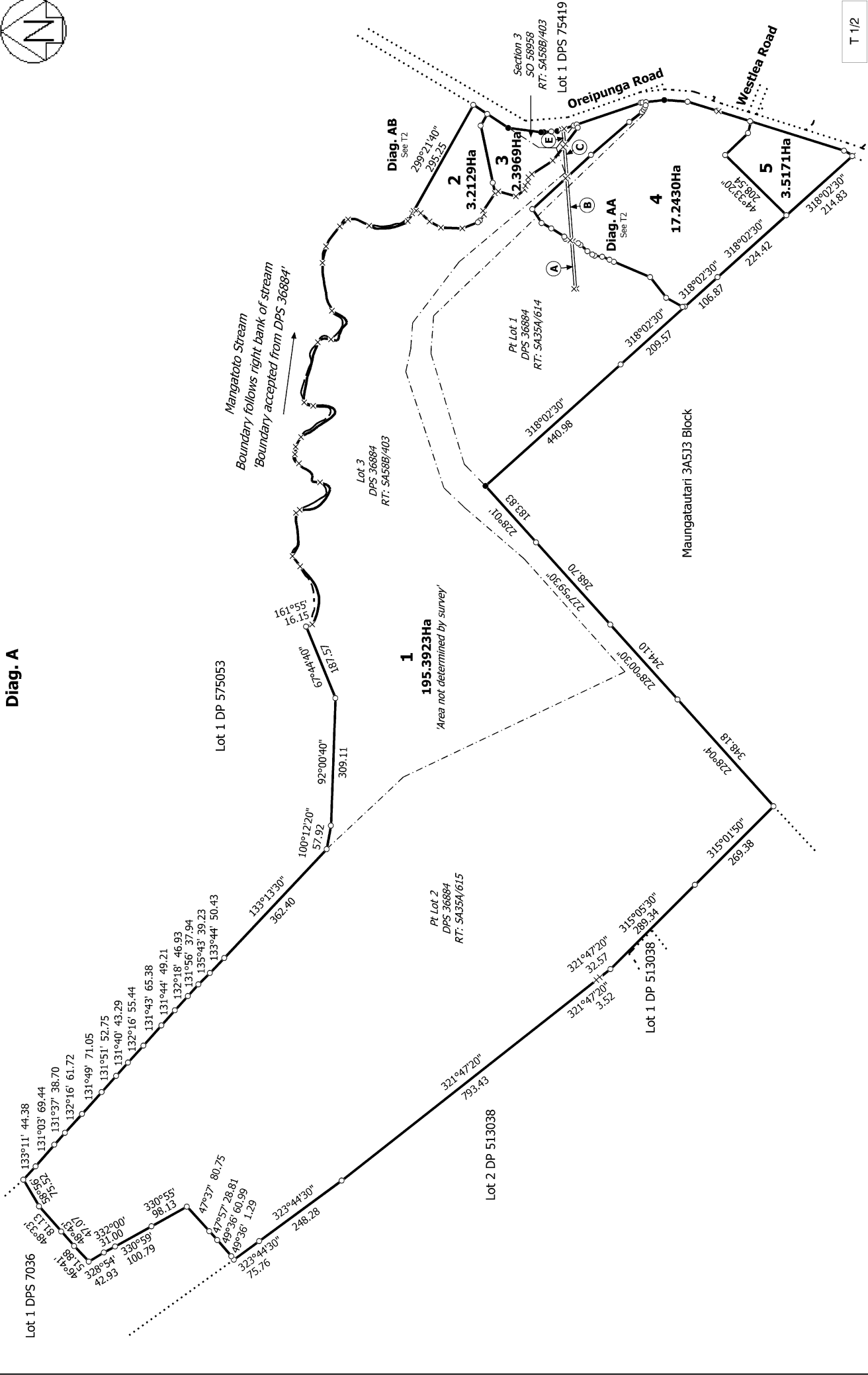
Diag. AC

Diag. AD

Land District: South Auckland Digitally Generated Plan <small>Generated on: 02/10/2023 12:16pm Page 19 of 21</small>	LOTS 1 - 5 BEING A SUBDIVISION OF SECTION 3 SO 58958 AND PT LOT 1, PT LOT 2 AND LOT 3 DPS 36884	Surveyor: Alistair Graeme Bond Firm: Cogswell Surveys Ltd Date of Survey: 8/03/2023	Record of Survey DP 589546 Deposited on: 5/09/2023
---	--	---	---



Diag. A



Land District: South Auckland

Digitally Generated Plan
 Generated on: 02/10/2023 12:16pm Page 20 of 21

LOTS 1 - 5 BEING A SUBDIVISION OF SECTION 3 SO 58958 AND PT LOT 1, PT LOT 2 AND LOT 3 DPS 36884

Surveyor: Alistair Graeme Bond
 Firm: Cogswell Surveys Ltd
 Date of Survey: 8/03/2023

Record of Survey
 DP 589546

Deposited on: 5/09/2023

