



Record of Survey - DP 588377

Survey Number DP 588377
Surveyor Reference 5489 Elms
Surveyor Jevon Thomas Robin Flatt
Survey Firm Surveying The Bay Ltd (Hastings)
Surveyor Declaration I Jevon Thomas Robin Flatt, being a licensed cadastral surveyor, certify that--
(a) this dataset provided by me and its related survey are accurate, correct and in accordance with the Cadastral Survey Act 2002 and Cadastral Survey Rules 2021; and
(b) the survey was undertaken by me or under my personal direction.
Declared on 14 Apr 2023 09:14 AM

Survey Details

Dataset Description LOTS 1 AND 2 BEING A SUBDIVISION OF LOT 15 DEEDS PLAN 324
Purpose LT Subdivision
Status Deposited **Type** Survey
Land District Hawkes Bay **Survey Class** Class A
Meridional Circuit Hawkes Bay 2000 **Vertical Datum** None

Survey Dates

Surveyed Date 22/02/2023 **Certified Date** 14/04/2023
Submitted Date 14/04/2023 09:14:11 **Survey Approval Date** 09/05/2023
Deposit Date 14/04/2023

Referenced Surveys

Survey Number	Land District	Bearing Correction
DP 5073	Hawkes Bay	0°00'00"
DP 6725	Hawkes Bay	0°00'00"
SO 4951	Hawkes Bay	0°00'00"
DP 362564	Hawkes Bay	0°00'00"
DP 470444	Hawkes Bay	0°00'00"
DP 492649	Hawkes Bay	0°00'00"
LT 545431	Hawkes Bay	0°00'00"
DP 553462	Hawkes Bay	0°00'00"
DP 17174	Hawkes Bay	0°00'00"
DP 8644	Hawkes Bay	0°00'00"
DP 18120	Hawkes Bay	0°00'00"
DP 19688	Hawkes Bay	0°00'00"

Territorial Authorities

Hastings District

Comprised In

RT HB86/145



Record of Survey - DP 588377

Created Parcels

Parcels	Parcel Intent	Area	RT Reference
Lot 1 Deposited Plan 588377	Fee Simple Title	0.0491 Ha	1118813
Lot 2 Deposited Plan 588377	Fee Simple Title	0.0523 Ha	1118814
Area A Deposited Plan 588377	Easement		
Total Area		<hr/> 0.1014 Ha	

Mark and Vector

Survey Number DP 588377
Meridional Circuit Hawkes Bay 2000

From	To	Code	Bearing	Adpt Surv	Bearing Correction	Distance	Adpt Surv	Class
SS 201 SO 4951	MA 2 DP 588377	ob0	50°34'00" M			19.60 M		
MA 2 DP 588377	IR 1 DP 588377	ob32	50°34'00" M			33.05 M		
IR 1 DP 588377	IT 1 DP 470444	ob35	50°34'00" M			16.29 M		
IT 1 DP 470444	IT 2 DP 470444	ob41	50°34'00" M			18.34 M		
IT 2 DP 470444	MA 1 DP 492649	ob43	50°34'00" M			23.22 M		
MA 1 DP 492649	BP 1 SO 10693	ob45	93°00'00" A	DP 492649	0°00'00"	19.49 A	DP 492649	
BP 1 SO 10693	SS 201 SO 4951	ob46	236°34'50" M			125.57 M		
IT 1 DP 470444	IT 3 DP 470444	ob42	321°22'00" A	DP 470444	0°00'00"	47.35 A	DP 470444	
IT 3 DP 470444	MA 4 DP 470444	ob3	107°46'00" A	DP 470444	0°00'00"	25.14 A	DP 470444	
MA 4 DP 470444	IT 2 DP 470444	ob4	131°46'00" A	DP 470444	0°00'00"	26.53 A	DP 470444	
IT 2 DP 470444	PEG 5 DP 470444	ob44	236°54'00" A	DP 470444	0°00'00"	18.83 A	DP 470444	
MA 4 DP 470444	PEG 4 DP 470444	ob5	291°28'00" A	DP 470444	0°00'00"	30.39 A	DP 470444	
SS 201 SO 4951	MA 3 DP 588377	ob1	320°31'24" M			22.20 M		
MA 3 DP 588377	202 SO 4951	ob7	320°31'24" M			21.62 M		
202 SO 4951	IT 1 DP 362564	ob10	2°28'40" A	DP 362564	0°00'00"	36.62 A	DP 362564	
IT 1 DP 362564	IT 8 DP 362564	ob12	329°08'50" A	DP 362564	0°00'00"	20.29 A	DP 362564	
IT 8 DP 362564	IS 7 DP 362564	ob13	39°56'30" A	DP 362564	0°00'00"	7.61 A	DP 362564	
IS 7 DP 362564	IS 6 DP 362564	ob14	39°56'30" A	DP 362564	0°00'00"	16.34 A	DP 362564	
IS 6 DP 362564	MA 9 DP 362564	ob15	321°12'00" A	DP 362564	0°00'00"	51.57 A	DP 362564	
MA 9 DP 362564	BP 2 SO 10693	ob16	50°43'50" A	LT 545431	0°00'00"	57.11 A	LT 545431	
BP 2 SO 10693	BP 1 SO 10693	ob17	134°47'20" A	DP 553462	0°00'00"	160.95 A	DP 553462	
202 SO 4951	PEG (1) DP 5073	ob11	24°25'30" A	SO 4951	0°00'00"	20.18 A	SO 4951	
SS 201 SO 4951	PEG 11 DP 588377	ob2	43°59'00" M			18.24 M		
PEG (1) DP 5073	Disk 12 DP 588377	ob18	140°31'24" A	DP 5073	0°00'00"	30.50 C		
Disk 12 DP 588377	UNMK 55 DP 588377	ob19	140°31'24" A	DP 5073	0°00'00"	17.12 C		Class A
UNMK 55 DP 588377	PEG 11 DP 588377	ob26	140°31'24" A	DP 5073	0°00'00"	3.00 C		Class A
PEG 4 DP 470444	UNMK 53 DP 588377	ob6	140°26'00" A	DP 470444	0°00'00"	30.57 C		
UNMK 53 DP 588377	PEG 13 DP 588377	ob21	140°26'00" A	DP 470444	0°00'00"	1.00 C		Class A
PEG 13 DP 588377	PEG 5 DP 470444	ob30	140°26'00" A	DP 470444	0°00'00"	19.12 C		Class A
PEG 5 DP 470444	PEG 15 DP 588377	ob29	230°34'45" A	DP 6725	0°00'00"	26.02 C		Class A
PEG 15 DP 588377	PEG 11 DP 588377	ob24	230°34'45" A	DP 6725	0°00'00"	24.42 C		Class A
Disk 12 DP 588377	PEG 14 DP 588377	ob20	50°34'40" C			24.44 C		Class A

Mark and Vector

Survey Number DP 588377

Meridional Circuit Hawkes Bay 2000

From	To	Code	Bearing	Adpt Surv	Bearing Correction	Distance	Adpt Surv	Class
PEG 14 DP 588377	UNMK 53 DP 588377	ob22	50°34'40"	C		25.97 C		Class A
PEG 14 DP 588377	Disk 17 DP 588377	ob23	140°35'00"	C		1.00 C		Class A
Disk 17 DP 588377	UNMK 54 DP 588377	ob31	140°35'00"	C		16.12 C		Class A
UNMK 54 DP 588377	PEG 15 DP 588377	ob25	140°35'00"	C		3.00 C		Class A
UNMK 55 DP 588377	UNMK 54 DP 588377	ob27	50°35'00"	C		24.42 C		Class A
MA 2 DP 588377	MA 3 DP 588377	ob33	279°06'00"	M		29.62 M		
IR 1 DP 588377	MA 4 DP 588377	ob36	291°41'00"	M		23.42 M		
MA 4 DP 588377	MA 3 DP 588377	ob28	232°54'00"	M		41.40 M		
MA 2 DP 588377	Disk 12 DP 588377	ob34	316°43'00"	M		22.26 M		
IR 1 DP 588377	PEG 5 DP 470444	ob37	43°08'00"	M		16.05 M		
IR 1 DP 588377	UNMK 53 DP 588377	ob38	356°07'00"	C		27.28 C		Class A
IR 1 DP 588377	PEG 13 DP 588377	ob39	357°23'00"	M		26.48 M		
IR 1 DP 588377	PEG 15 DP 588377	ob40	242°13'00"	M		10.32 M		
MA 3 DP 588377	Disk 17 DP 588377	ob8	51°54'00"	M		42.57 M		
MA 3 DP 588377	PEG 14 DP 588377	ob9	50°33'00"	M		42.56 M		

Mark Name	Mark Condition	Description
202 SO 4951		Under Cover, In Berm
BP 1 SO 10693		Plaque on Top of Kerb
Disk 12 DP 588377		Disk on Concrete Block
IR 1 DP 588377		Down 0.1, Back of FP
IT 1 DP 470444		D 0.1m, Against Footpath
MA 1 DP 492649		MA on Top of Kerb
MA 2 DP 588377		FL in FP
MA 3 DP 588377		FL IN FP
MA 4 DP 588377		FL in Concrete
SS 201 SO 4951		Under Cover, In Footpath

*** End of Report ***



MEMORANDUM OF EASEMENTS IN GROSS (Pursuant to s243 Resource Management Act 1991)			
PURPOSE	SHOWN	SERVIENT TENEMENT (Burdened Land)	DOMINANT TENEMENT (Benefited Land)
RIGHTS TO CONVEY ELECTRICITY AND TELECOMMUNICATIONS	A	LOT 1	LOT 2

Occupation Diagram

NOTES:
 - OCCUPATION SHOWN AT THE TIME OF SURVEY
 - NO OCCUPATION UNLESS OTHERWISE STATED

CLIENT:

PROJECT:
 OCCUPATION DIAGRAM FOR
 DP 575841



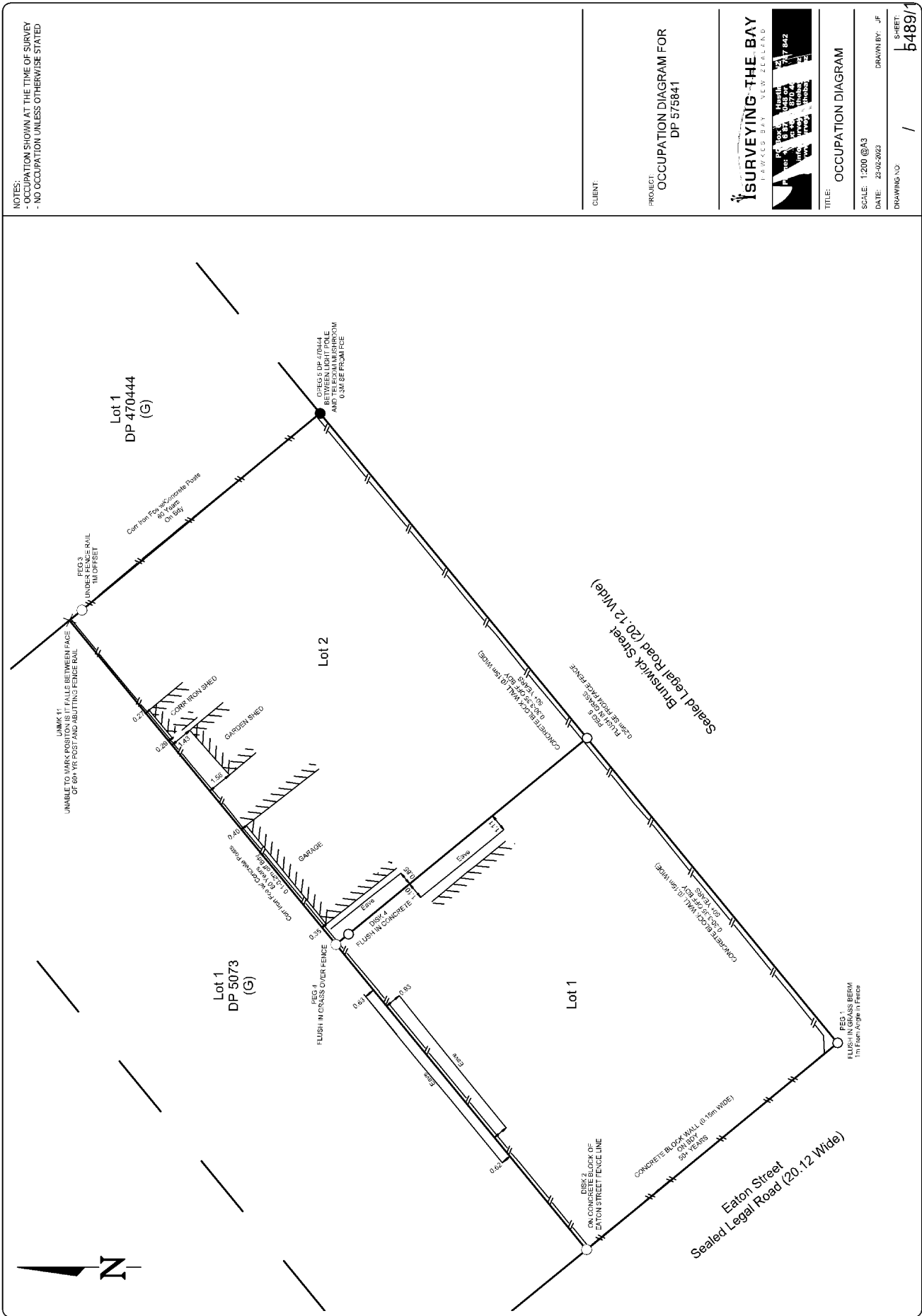
TITLE:
 OCCUPATION DIAGRAM

SCALE: 1:200 @ A3
 DATE: 23-02-2023

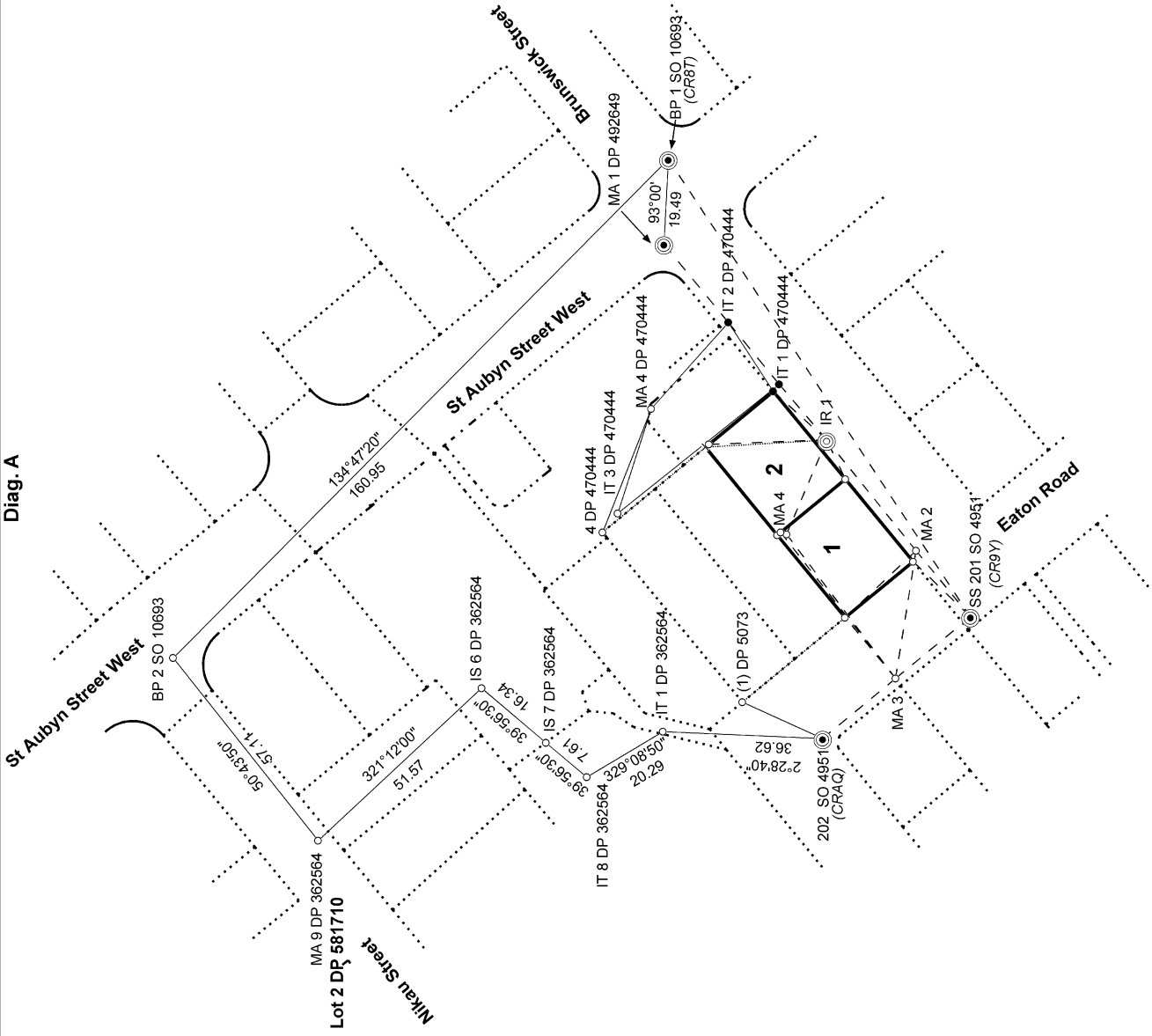
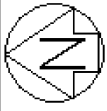
DRAWN BY: JF

DRAWING NO: /

SHEET:
 5489/1



Diag. A

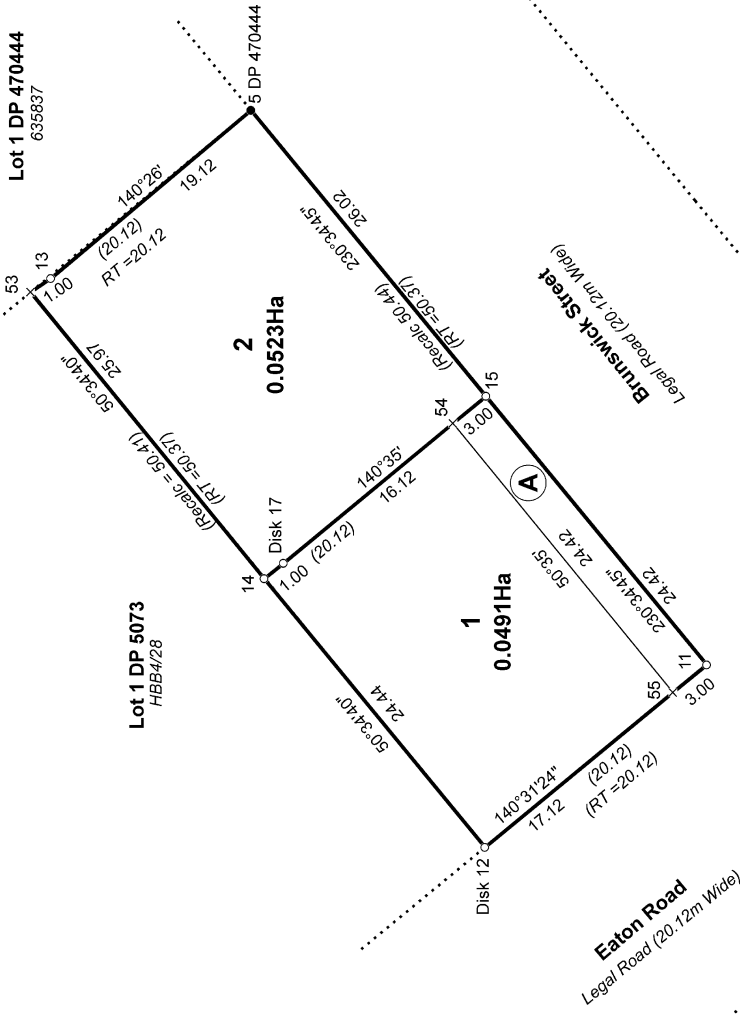


Record of Survey
DP 588377
Deposited on: 14/04/2023

Surveyor: Jevon Thomas Robin Flatt
Firm: Surveying The Bay Ltd (Hastings)
Date of Survey: 22/02/2023

LOTS 1 AND 2 BEING A SUBDIVISION OF LOT 15 DEEDS PLAN 324

Diag. A



RMA20210392
5489 - Elms

Land District: Hawkes Bay

Digitally Generated Plan

Generated on: 10/05/2023 10:53am | Page 9 of 9

LOTS 1 AND 2 BEING A SUBDIVISION OF LOT 15 DEEDS PLAN 324

Surveyor: Jevon Thomas Robin Flatt
Firm: Surveying The Bay Ltd (Hastings)
Date of Survey: 22/02/2023

Record of Survey
DP 588377

Deposited on: 14/04/2023