

Record of Survey - DP 587723

Survey Number DP 587723
Surveyor Reference 21054
Surveyor Allen Adrian Juffermans
Survey Firm Juffermans Surveyors Ltd
Surveyor Declaration I Allen Adrian Juffermans, being a licensed cadastral surveyor, certify that--
 (a) this dataset provided by me and its related survey are accurate, correct and in accordance with the Cadastral Survey Act 2002 and Cadastral Survey Rules 2021; and
 (b) the survey was undertaken by me or under my personal direction.
 Declared on 17 Nov 2023 08:50 AM

Survey Details

Dataset Description Lots 1 to 5 being a subdivision of lot 9 DP 896, Land Covenant and Esplanade Strip over Lot 2B DP 2243 and Esplanade Strip over Pt Lot 1 DP 5901
Purpose LT Subdivision
Status Deposited **Type** Survey
Land District Taranaki **Survey Class** Class B
Meridional Circuit Taranaki 2000 **Vertical Datum** None

Survey Dates

Surveyed Date 07/02/2023 **Certified Date** 17/11/2023
Submitted Date 17/11/2023 08:50:46 **Survey Approval Date** 17/11/2023
Deposit Date 02/10/2023

Referenced Surveys

Survey Number	Land District	Bearing Correction
DP 7120	Taranaki	0°00'00"
DP 896	Taranaki	0°00'00"
ML 1713	Taranaki	
DP 5901	Taranaki	0°00'00"
DP 2243	Taranaki	0°00'00"
SO 6417	Taranaki	0°00'00"
DP 7063	Taranaki	0°00'00"
DP 587723	Taranaki	

Territorial Authorities

South Taranaki District

Comprised In

RT TN214/24

Created Parcels

Parcels	Parcel Intent	Area	RT Reference
Area F Deposited Plan 587723	Covenant - Land		
Lot 1 Deposited Plan 587723	Fee Simple Title	0.4700 Ha	1118290
Lot 2 Deposited Plan 587723	Fee Simple Title	0.4827 Ha	1118291



Record of Survey - DP 587723

Created Parcels

Parcels	Parcel Intent	Area	RT Reference
Lot 3 Deposited Plan 587723	Fee Simple Title	0.4542 Ha	1118292
Lot 4 Deposited Plan 587723	Fee Simple Title	0.4514 Ha	1118293
Area A Deposited Plan 587723	Easement		
Esplanade Strip B Deposited Plan 587723	Esplanade Strip		
Lot 5 Deposited Plan 587723	Fee Simple Title	7.1062 Ha	1118294
Esplanade Strip D Deposited Plan 587723	Esplanade Strip		
Esplanade Strip E Deposited Plan 587723	Esplanade Strip		
Area C Deposited Plan 587723	Covenant - Land		
Total Area		<hr/> 8.9645 Ha	

Mark and Vector

Survey Number DP 587723
 Meridional Circuit Taranaki 2000

From	To	Code	Bearing	Adpt Surv	Bearing Correction	Distance	Adpt Surv	Class
IB VIII DP 12305	IT 10 DP 356670	ob0	277°09'16" M			2,299.65 M		
IT 10 DP 356670	IT 2 SO 415057	ob1	151°30'47" M			5,248.88 M		
IT 2 SO 415057	IT II DP 7120	ob3	354°53'10" M			3,119.75 M		
IT II DP 7120	IB VIII DP 12305	ob4	2°38'40" M			1,220.93 M		
IT 10 DP 356670	IT (1) ML 1713	ob2	127°58'00" M			849.53 M		
IT (1) ML 1713	IT (2) ML 1713	ob6	130°56'00" M			134.32 M		
IT (2) ML 1713	IT II DP 7120	ob7	121°37'20" M			1,707.78 M		
IT (2) ML 1713	IS V DP 7120	ob8	130°18'10" M			1,332.05 M		
IS V DP 7120	IT II DP 7120	ob9	94°24'30" M			439.64 M		
IT II DP 7120	IS I DP 7120	ob5	359°59'30" M			28.04 M		
IS I DP 7120	IS V DP 7120	ob14	270°45'00" M			438.37 M		
IS I DP 7120	PEG (9) DP 7120	ob15	270°00'00" M			2.01 M		
IS I DP 7120	IS XVII DP 896	ob16	356°34'30" M			33.31 M		
IS XVII DP 896	IS V DP 7120	ob19	266°24'10" M			437.17 M		
IS V DP 7120	IT IV DP 7120	ob10	92°10'20" M			101.74 M		
IT IV DP 7120	IT II DP 7120	ob23	95°04'50" M			337.99 M		
IS V DP 7120	PEG (12) DP 896	ob11	63°41'00" A	DP 7120	0°00'00"	6.40 A	DP 7120	
IS V DP 7120	PEG (13) DP 896	ob12	103°37'00" A	DP 7120	0°00'00"	25.55 A	DP 7120	
PEG (13) DP 896	PEG D DP 587723	ob25	89°58'35" A	DP 7120	0°00'00"	81.29 C		Class B
PEG D DP 587723	PEG E DP 587723	ob26	89°58'35" A	DP 7120	0°00'00"	145.13 C		Class B
UNMK 29 DP 587723	PEG (9) DP 7120	ob86	89°58'35" A	DP 7120	0°00'00"	4.60 C		Class B
UNMK 179 DP 587723	IS XVII DP 896	ob134	0°00'00" A	DP 896	0°00'00"	22.38 C		Class BD
IS XVII DP 896	IS XV DP 896	ob20	322°20'00" A	DP 896	0°00'00"	168.80 A	DP 896	
IS XV DP 896	IS XIV DP 896	ob28	352°31'00" A	DP 896	0°00'00"	102.35 A	DP 896	
IS XIV DP 896	IS XXIX DP 896	ob31	329°14'00" A	DP 896	0°00'00"	103.54 A	DP 896	
IS XXIX DP 896	UNMK 25 DP 587723	ob33	220°57'00" A	DP 896	0°00'00"	12.92 C		Class BD
UNMK 25 DP 587723	UNMK 26 DP 587723	ob38	220°57'00" A	DP 896	0°00'00"	56.99 C		Class BD
PEG A DP 587723	PEG B DP 587723	ob39	220°57'00" A	DP 896	0°00'00"	44.39 C		Class B
PEG B DP 587723	PEG O DP 587723	ob40	220°57'00" A	DP 896	0°00'00"	54.43 C		Class B
PEG O DP 587723	PEG C DP 587723	ob41	114°51'00" A	DP 896	0°00'00"	10.79 C		Class B
PEG C DP 587723	PEG (12) DP 896	ob42	114°51'00" A	DP 896	0°00'00"	21.94 C		Class B
PEG (12) DP 896	PEG (13) DP 896	ob24	114°51'00" A	DP 896	0°00'00"	21.04 A	DP 896	Class B
IS XVII DP 896	IT 1 DP 587723	ob21	269°32'30" M			249.83 M		

Mark and Vector

Survey Number DP 587723

Meridional Circuit Taranaki 2000

From	To	Code	Bearing	Adpt Surv	Bearing Correction	Distance	Adpt Surv	Class
IT 1 DP 587723	IT 2 DP 587723	ob44	293°52'30"	M		128.34 M		
IT 2 DP 587723	IS V DP 7120	ob51	221°46'20"	M		103.82 M		
IT 1 DP 587723	PEG L DP 587723	ob45	23°15'00"	M		95.38 M		
IT 1 DP 587723	PEG M DP 587723	ob46	30°50'20"	M		91.36 M		
IT 1 DP 587723	PEG K DP 587723	ob47	344°05'10"	M		40.09 M		
IT 1 DP 587723	PEG J DP 587723	ob48	329°37'17"	M		36.16 M		
IT 2 DP 587723	PEG P DP 587723	ob52	221°13'10"	M		91.82 M		
IT 2 DP 587723	PEG F DP 587723	ob53	213°07'50"	M		89.06 M		
IT 2 DP 587723	PEG G DP 587723	ob54	156°30'10"	M		81.29 M		
IT 2 DP 587723	PEG H DP 587723	ob55	137°38'00"	M		77.09 M		
IT 2 DP 587723	PEG I DP 587723	ob56	106°07'00"	M		87.73 M		
IT 2 DP 587723	PEG N DP 587723	ob57	95°09'40"	M		99.89 M		
PEG P DP 587723	PEG F DP 587723	ob69	115°00'00"	C		13.05 C		Class B
PEG F DP 587723	PEG G DP 587723	ob70	89°58'40"	C		81.09 C		Class B
PEG G DP 587723	PEG H DP 587723	ob71	48°00'00"	C		26.29 C		Class B
PEG H DP 587723	PEG I DP 587723	ob72	44°46'00"	C		45.92 C		Class B
PEG I DP 587723	PEG N DP 587723	ob74	44°46'00"	C		21.62 C		Class B
PEG N DP 587723	PEG K DP 587723	ob76	122°41'00"	C		8.17 C		Class B
PEG K DP 587723	PEG J DP 587723	ob65	224°46'00"	C		10.36 C		Class B
PEG K DP 587723	PEG L DP 587723	ob66	44°44'40"	C		69.20 C		Class B
PEG L DP 587723	PEG M DP 587723	ob63	135°02'00"	C		12.99 C		Class B
PEG I DP 587723	PEG A DP 587723	ob75	288°43'00"	C		118.90 C		Class B
PEG H DP 587723	PEG B DP 587723	ob73	288°48'00"	C		115.54 C		Class B
PEG J DP 587723	PEG D DP 587723	ob67	224°46'00"	C		88.22 C		Class B
IT 2 DP 587723	PEG A DP 587723	ob58	295°58'20"	M		31.53 M		

Mark and Vector

Survey Number DP 587723

Meridional Circuit Taranaki 2000

From	To	Code	Bearing	Adpt Surv	Bearing Correction	Distance	Adpt Surv	Class
IT 2 DP 587723	PEG B DP 587723	ob59	251°02'40"	M		60.73 M		
IT 2 DP 587723	PEG C DP 587723	ob60	231°53'50"	M		105.85 M		
IS V DP 7120	PEG O DP 587723	ob13	304°44'20"	M		29.15 M		
IT 1 DP 587723	PEG D DP 587723	ob49	248°39'40"	M		86.28 M		
IT 1 DP 587723	PEG E DP 587723	ob50	115°48'10"	M		71.92 M		
UNMK 28 DP 587723	PEG E DP 587723	ob88	170°44'30"	C		70.42 C		Class B
PEG C DP 587723	PEG P DP 587723	ob43	99°11'00"	C		23.12 C		Class B
PEG J DP 587723	PEG E DP 587723	ob68	127°00'00"	C		103.95 C		Class B
IS XVII DP 896	UNMK 27 DP 587723	ob22	0°00'00"	A DP 896	0°00'00"	3.16 C		Class BD
UNMK SO 6417	PEG (23) DP 896	ob136	0°00'00"	A DP 896	0°00'00"	7.81 C		Class BD
PEG (23) DP 896	IT 1 DP 587723	ob78	265°43'40"	C		250.52 C		
IS XXIX DP 896	PEG (24) DP 896	ob34	40°57'00"	A DP 896	0°00'00"	8.93 A DP 896		Class BD
PEG (24) DP 896	IT 2 DP 587723	ob79	215°55'30"	C		346.84 C		
IS XXIX DP 896	UNMK 39 DP 587723	ob35	133°31'00"	C		22.59 C		
UNMK 39 DP 587723	IT 2 DP 587723	ob80	219°37'00"	C		335.65 C		
IS XXIX DP 896	UNMK 40 DP 587723	ob36	134°06'00"	C		41.79 C		
UNMK 40 DP 587723	IT 2 DP 587723	ob81	222°53'40"	C		334.47 C		
IS XIV DP 896	UNMK 41 DP 587723	ob32	1°26'00"	C		31.87 C		
UNMK 41 DP 587723	IT 2 DP 587723	ob82	229°12'10"	C		332.13 C		
IS XV DP 896	UNMK 48 DP 587723	ob29	12°01'00"	C		30.27 C		
UNMK 48 DP 587723	IT 1 DP 587723	ob83	222°47'10"	C		225.14 C		
IS XV DP 896	UNMK 49 DP 587723	ob30	73°07'00"	C		16.19 C		
UNMK 49 DP 587723	IT 1 DP 587723	ob84	229°07'20"	C		214.42 C		
PEG E DP 587723	UNMK 29 DP 587723	ob27	89°58'35"	A DP 7120	0°00'00"	180.47 C		Class B
PEG M DP 587723	UNMK 28 DP 587723	ob64	170°44'30"	C		40.83 C		Class B

Mark and Vector

Survey Number DP 587723

Meridional Circuit Taranaki 2000

From	To	Code	Bearing	Adpt Surv	Bearing Correction	Distance	Adpt Surv	Class
UNMK 28 DP 587723	UNMK 30 DP 587723	ob87	14°18'00"	C		42.62 C		Class B
UNMK 30 DP 587723	UNMK 31 DP 587723	ob89	113°28'00"	C		34.14 C		Class B
UNMK 31 DP 587723	UNMK 32 DP 587723	ob90	133°17'00"	C		16.96 C		Class B
UNMK 32 DP 587723	UNMK 54 DP 587723	ob91	123°41'00"	C		23.87 C		Class B
UNMK 54 DP 587723	UNMK 55 DP 587723	ob92	38°17'00"	C		13.00 C		Class B
UNMK 55 DP 587723	UNMK 56 DP 587723	ob93	21°55'00"	C		15.82 C		Class B
UNMK 56 DP 587723	UNMK 57 DP 587723	ob94	74°09'00"	C		15.07 C		Class B
UNMK 57 DP 587723	UNMK 58 DP 587723	ob95	105°51'00"	C		15.07 C		Class B
UNMK 58 DP 587723	UNMK 59 DP 587723	ob96	136°18'00"	C		16.83 C		Class B
UNMK 59 DP 587723	UNMK 60 DP 587723	ob97	122°06'30"	C		14.22 C		Class BD
UNMK 60 DP 587723	IT 1 DP 587723	ob98	256°37'40"	C		199.49 C		
UNMK 29 DP 587723	UNMK 61 DP 587723	ob85	342°25'00"	C		18.47 C		Class BD
IS XXIX DP 896	IS XIII DP 896	ob37	329°14'00"	A DP 896	0°00'00"	27.62 A DP 896		
IS XIII DP 896	IS XII DP 896	ob99	354°21'00"	A DP 896	0°00'00"	136.57 A DP 896		
IS XII DP 896	IS XI DP 896	ob100	315°51'00"	A DP 896	0°00'00"	193.48 A DP 896		
IS XI DP 896	IS X DP 896	ob101	288°09'00"	A DP 896	0°00'00"	147.98 A DP 896		
IS X DP 896	IS IX DP 896	ob102	326°06'00"	A DP 896	0°00'00"	166.27 A DP 896		
IS IX DP 896	IS VIII DP 896	ob103	5°27'00"	A DP 896	0°00'00"	92.40 A DP 896		
IS VIII DP 896	IS VII DP 2243	ob104	302°39'00"	A DP 2243	0°00'00"	119.23 A DP 2243		
IS VII DP 2243	IS DP 2243	ob105	125°26'00"	A DP 2243	0°00'00"	115.67 A DP 2243		
IS DP 2243	IS DP 2243	ob106	220°57'00"	A DP 2243	0°00'00"	647.76 A DP 2243		
IS DP 2243	PEG DP 2243	ob108	220°57'00"	A DP 2243	0°00'00"	20.12 A DP 2243		
PEG DP 2243	PEG DP 2243	ob109	137°04'00"	A DP 2243	0°00'00"	12.73 A DP 2243		
PEG DP 2243	PEG DP 896	ob110	137°04'00"	A DP 2243	0°00'00"	74.25 A DP 2243		
PEG DP 896	PEG DP 896	ob111	130°59'00"	A DP 896	0°00'00"	378.48 A DP 896		
PEG DP 896	PEG O DP 587723	ob112	114°51'00"	A DP 896	0°00'00"	214.97 A DP 896		
IS DP 2243	PEG DP 2243	ob107	56°06'00"	A DP 2243	0°00'00"	11.04 A DP 2243		
PEG DP 2243	UNMK 159 DP 587723	ob113	220°07'00"	A DP 2243	0°00'00"	33.69 C		Class BD
UNMK 159 DP 587723	PEG DP 2243	ob114	220°07'00"	A DP 2243	0°00'00"	646.28 C		
IS I DP 7120	IS IA SO 6417	ob17	0°00'00"	A DP 7120	0°00'00"	31.64 A DP 7120		
IS IA SO 6417	PEG I SO 6417	ob116	128°08'00"	A SO 6417	0°00'00"	169.28 A SO 6417		

Mark and Vector

Survey Number DP 587723

Meridional Circuit Taranaki 2000

From	To	Code	Bearing	Adpt Surv	Bearing Correction	Distance	Adpt Surv	Class
PEG I SO 6417	PEG II SO 6417	ob115	131°35'00"	A SO 6417	0°00'00"	276.24 A	SO 6417	
PEG II SO 6417	PEG DP 7063	ob121	122°54'00"	A DP 7063	0°00'00"	237.32 A	DP 7063	
PEG DP 7063	IT III DP 7063	ob118	122°54'00"	A DP 7063	0°00'00"	5.39 A	DP 7063	
IT III DP 7063	IT II DP 7063	ob122	227°56'40"	A DP 7063	0°00'00"	130.20 A	DP 7063	
IT II DP 7063	IS I DP 7063	ob124	164°39'20"	A DP 7063	0°00'00"	357.35 A	DP 7063	
IS I DP 7063	IS DP 5901	ob123	233°58'00"	A DP 7063	0°00'00"	35.67 A	DP 7063	
IS DP 5901	IS II DP 5901	ob126	233°58'00"	A DP 5901	0°00'00"	265.54 A	DP 5901	
IS II DP 5901	IS III DP 5901	ob127	259°40'00"	A DP 5901	0°00'00"	302.74 A	DP 5901	
IS III DP 5901	PEG SO 6417	ob128	0°00'00"	A DP 5901	0°00'00"	84.27 A	DP 5901	
PEG SO 6417	IS XXIII DP 7120	ob129	0°00'00"	A DP 7120	0°00'00"	476.81 A	DP 7120	
IS XXIII DP 7120	IS SO 6417	ob130	0°00'00"	A DP 7120	0°00'00"	253.11 A	DP 7120	
IS SO 6417	IT II DP 7120	ob131	0°00'00"	A DP 7120	0°00'00"	209.23 A	DP 7120	
IT II DP 7063	PEG DP 7063	ob125	344°39'20"	A DP 7063	0°00'00"	7.46 A	DP 7063	
PEG DP 7063	UNMK 178 DP 587723	ob119	228°36'30"	A DP 7063	0°00'00"	15.38 C		Class BD
UNMK 178 DP 587723	PEG DP 7063	ob133	228°36'30"	A DP 7063	0°00'00"	110.07 C		
PEG DP 7063	UNMK DP 7063	ob120	48°36'30"	A DP 7063	0°00'00"	8.65 A	DP 7063	Class BD
UNMK DP 7063	IT III DP 7063	ob132	192°48'00"	C		8.87 C		
PEG (9) DP 7120	UNMK 144 DP 587723	ob18	0°00'00"	A DP 7120	0°00'00"	5.79 C		Class BD
UNMK 144 DP 587723	UNMK 179 DP 587723	ob135	0°00'00"	A DP 7120	0°00'00"	5.04 C		Class BD
UNMK 27 DP 587723	UNMK SO 6417	ob77	0°00'00"	A DP 7120	0°00'00"	5.69 C		Class BD
UNMK 61 DP 587723	IT 1 DP 587723	ob137	273°15'30"	C		240.01 C		
IS IA SO 6417	IS XVII DP 896	ob117	308°08'00"	A SO 6417	0°00'00"	2.55 A	SO 6417	
UNMK 26 DP 587723	UNMK 62 DP 587723	ob138	220°57'00"	A DP 896	0°00'00"	110.62 C		Class B
UNMK 62 DP 587723	PEG A DP 587723	ob139	220°57'00"	A DP 896	0°00'00"	164.12 C		Class B
UNMK 62 DP 587723	UNMK 67 DP 587723	ob140	351°30'00"	C		161.41 C		Class B
UNMK 67 DP 587723	UNMK 68 DP 587723	ob141	11°37'00"	C		23.49 C		Class B
UNMK 68 DP 587723	UNMK 69 DP 587723	ob142	330°37'00"	C		48.83 C		Class B
UNMK 69 DP 587723	UNMK 70 DP 587723	ob143	65°38'00"	C		18.34 C		Class B
UNMK 70 DP 587723	UNMK 71 DP 587723	ob144	137°49'00"	C		68.06 C		Class B
UNMK 71 DP 587723	UNMK 26 DP 587723	ob145	151°42'00"	C		112.20 C		Class B

Mark and Vector

Survey Number DP 587723

Meridional Circuit Taranaki 2000

From	To	Code	Bearing	Adpt Surv	Bearing Correction	Distance	Adpt Surv	Class
IT 2 DP 587723	UNMK 72 DP 587723	ob61	44°54'50"	C		313.33	C	
UNMK 72 DP 587723	IT 1 DP 587723	ob146	200°46'20"	C		292.87	C	
IT 2 DP 587723	UNMK 73 DP 587723	ob62	47°42'10"	C		310.10	C	
UNMK 73 DP 587723	IT 1 DP 587723	ob147	203°15'20"	C		283.68	C	

Mark Name	Mark Condition	Description
IB VIII DP 12305		N/A
IT 1 DP 587723		Down 0.3 in Paddock,
IT 2 DP 587723		Down 0.3 in paddock
IT II DP 7120		Down 0.2, 1.5m from P+W fence
PEG O DP 587723		PEG DP 896 reinstated
UNMK 39 DP 587723		N/A
IS XII DP 896	Searched For and Not Found	
IS XIII DP 896	Searched For and Not Found	
IS XIV DP 896	Searched For and Not Found	
IS XV DP 896	Searched For and Not Found	
IS XXIX DP 896	Searched For and Not Found	

*** End of Report ***

Schedule / Memorandum

Land Registration District

Taranaki

Survey Number

LT 587723

Territorial Authority (the Council)

South Taranaki District

Memorandum of Easements

Last Edited: 01 Aug 2023 13:20:51

<u>Purpose</u>	<u>Shown</u>	<u>Burdened Land</u> (<u>Servient Tenement</u>)	<u>Benefited Land</u> (<u>Dominant Tenement</u>)
Right of Way	A	Lot 5	Lot 2, Lot 3, Lot 4, Lot 1

Memorandum of Easements in Gross

Last Edited: 04 Jun 2023 13:17:11

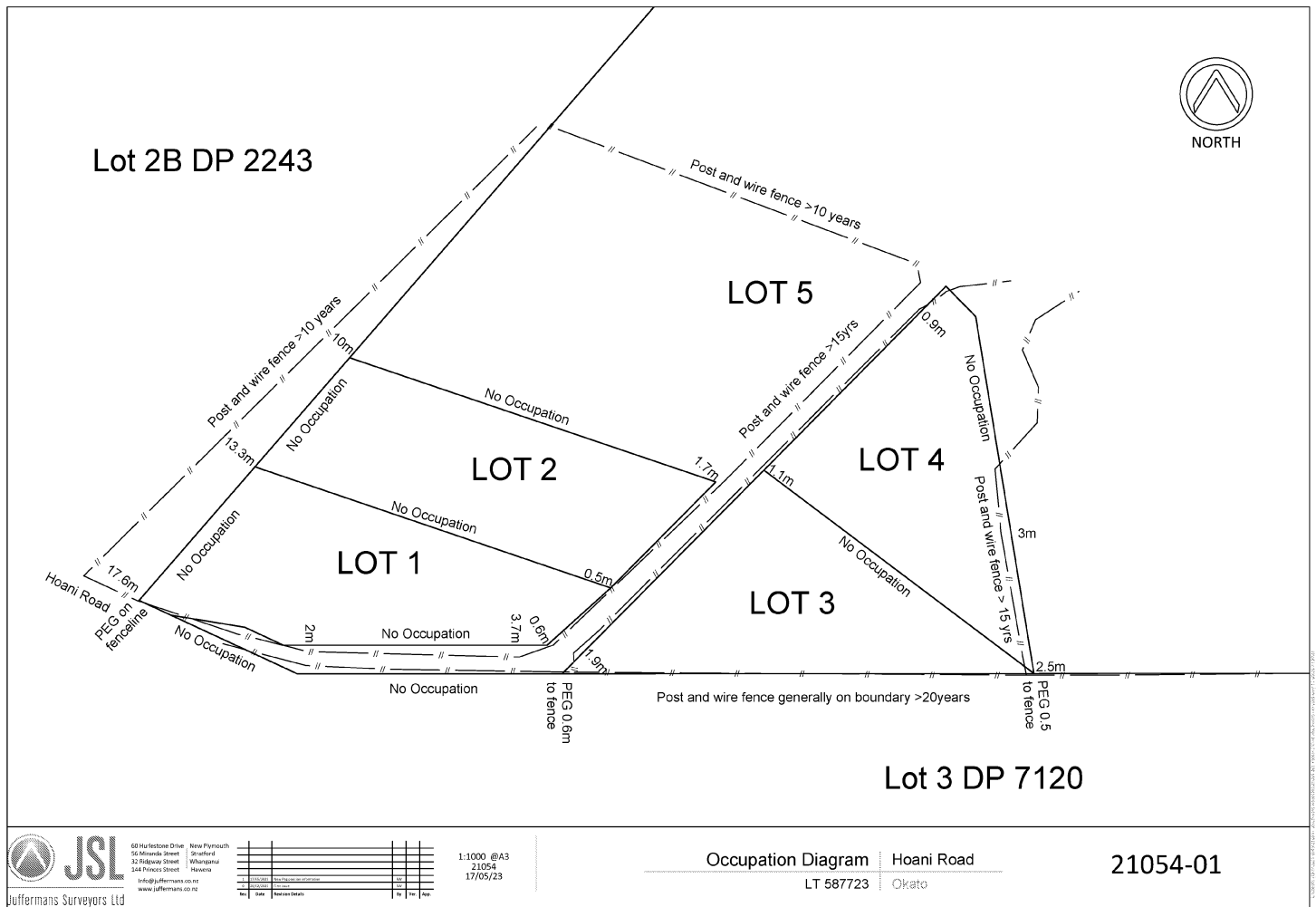
<u>Purpose</u>	<u>Shown</u>	<u>Burdened Land</u> (<u>Servient Tenement</u>)	<u>Grantee</u>
Right to convey electricity	A	Lot 5	Powerco Ltd

Notes

Last Edited: 07 Aug 2023 10:03:44

Areas C and F are subject to a consent notice.

Occupation Diagram

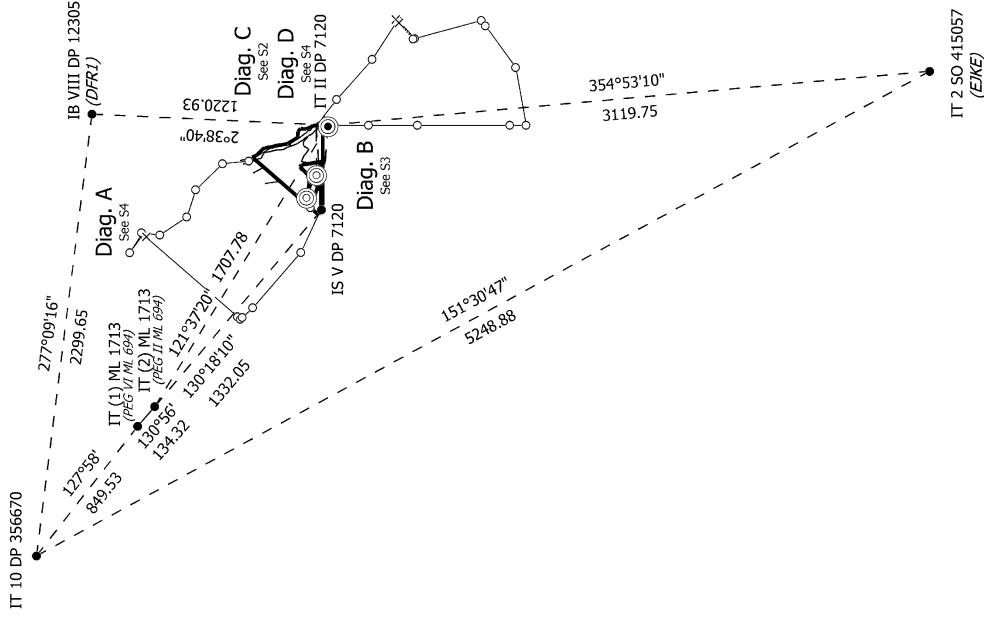
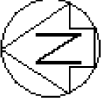


JSL
 68 Hurlock Drive, New Plymouth
 56 Miranda Street, Stratford
 35 Telford Street, Whangarei
 344 Princes Street, Havelock
 info@juffermans.co.nz
 www.juffermans.co.nz

1:1000 @A3
 21054
 17/05/23

Occupation Diagram | Hoani Road
 LT 587723 | Okato

21054-01



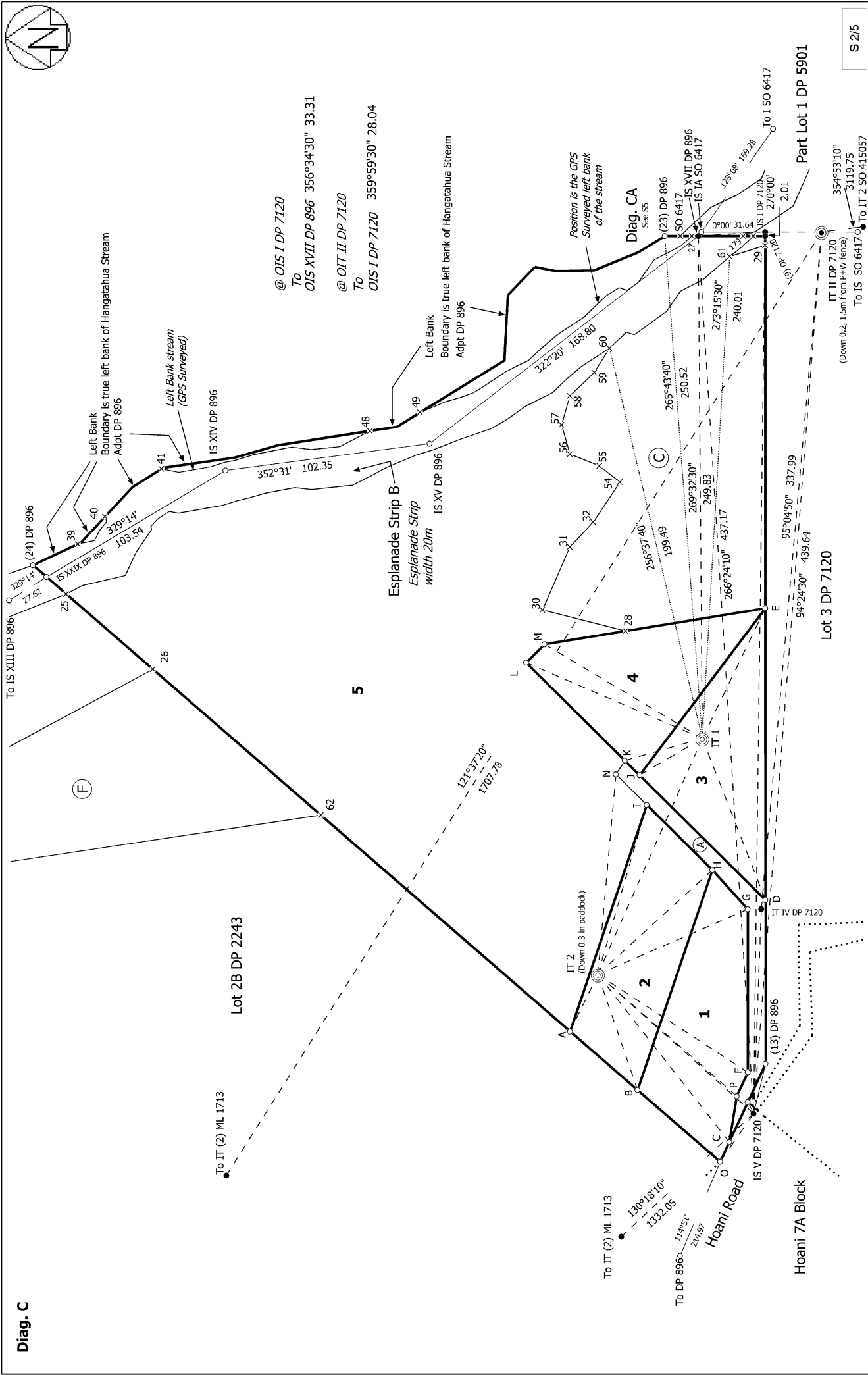
Lots 1 to 5 being a subdivision of lot 9 DP 896, Land Covenant and Esplanade Strip over Lot 2B DP 2243 and Esplanade Strip over Pt Lot 1 DP 5901

Surveyor: Allen Adrian Juffermans
Firm: Juffermans Surveyors Ltd
Date of Survey: 7/02/2023

Record of Survey
DP 587723
Deposited on: 2/10/2023



Diag. C

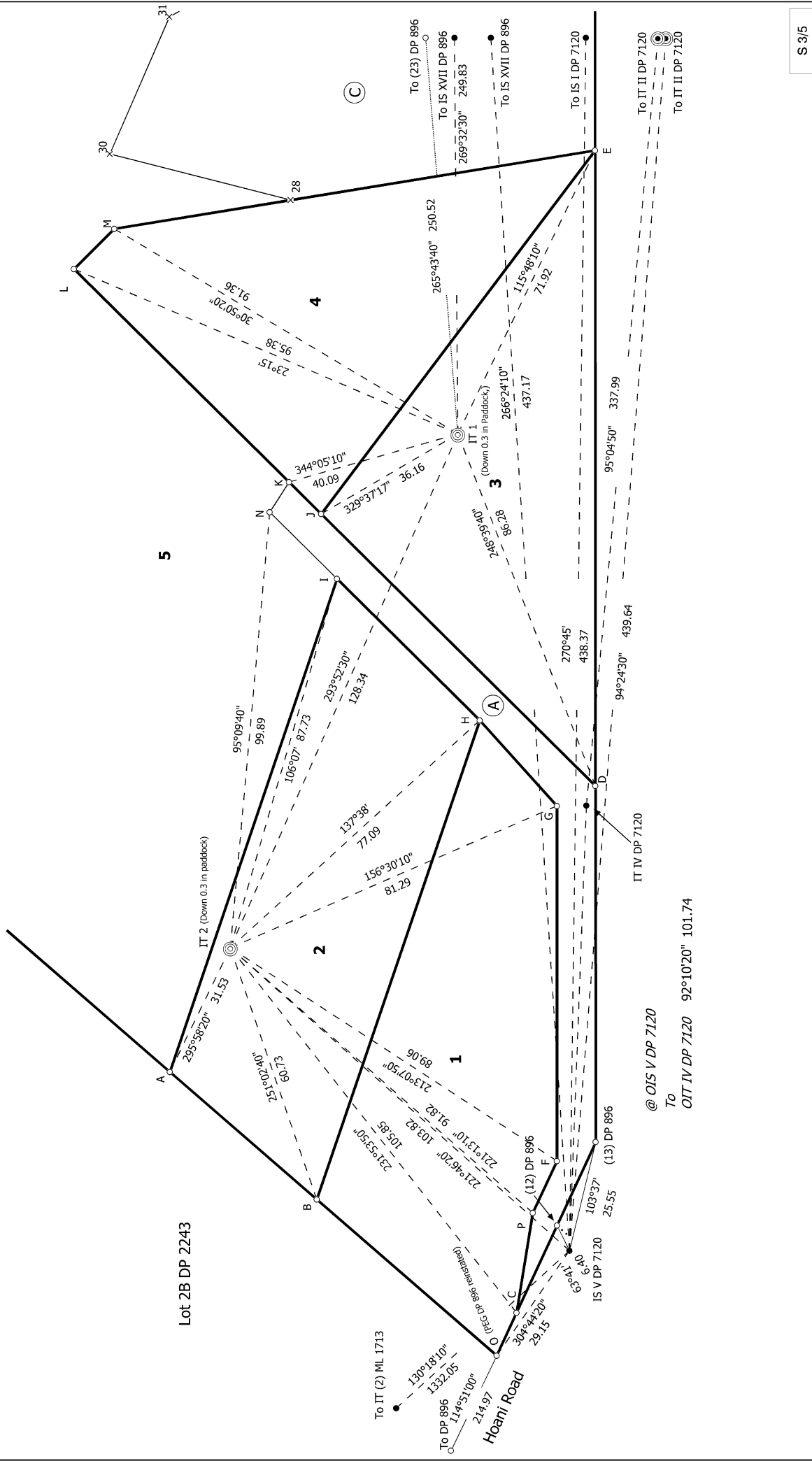


S 2/5

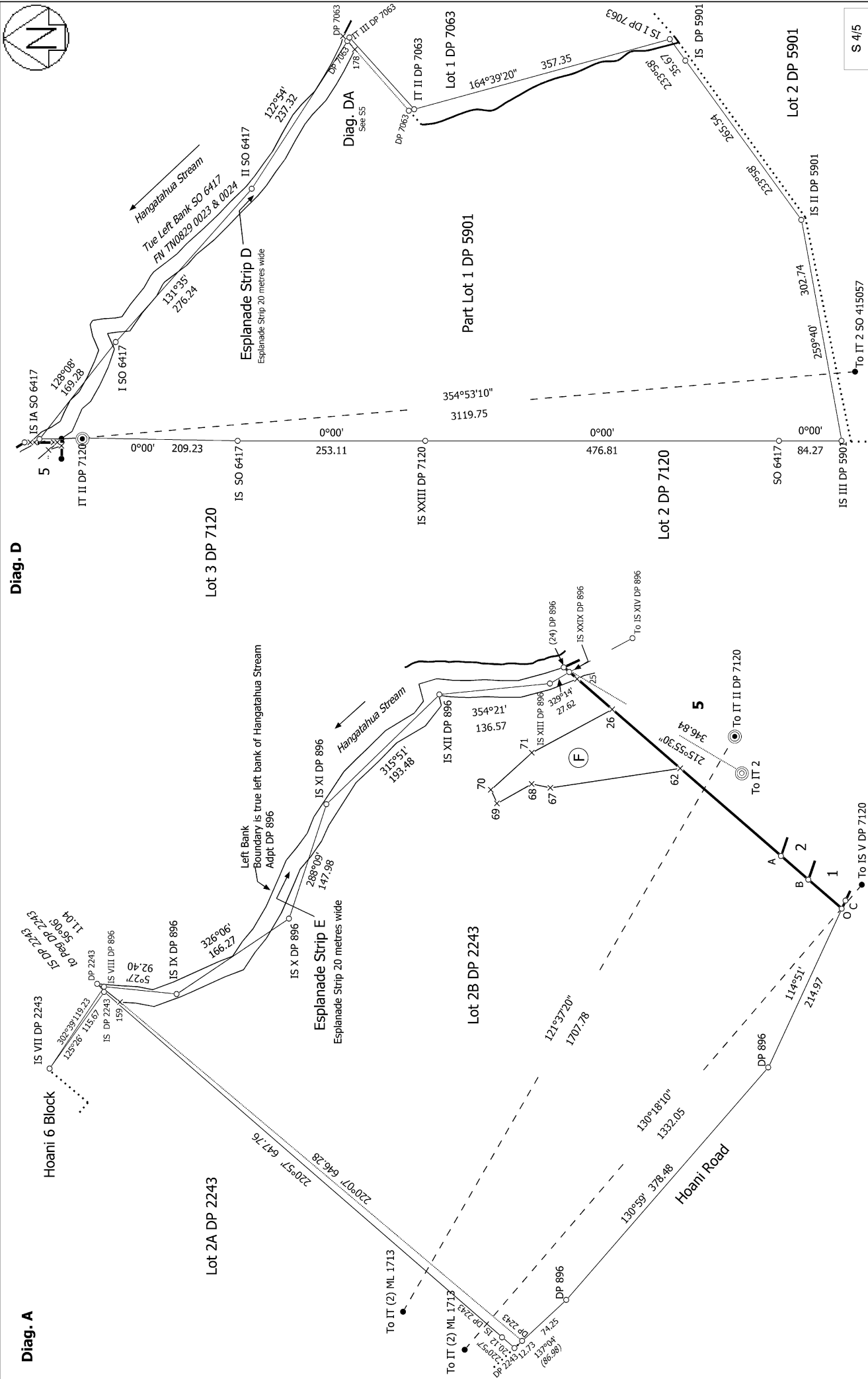
<p>Land District: Taranaki</p> <p>Digitally Generated Plan</p> <p>Generated on: 21/11/2023 12:07:00 Page 12 of 21</p>	<p>Lots 1 to 5 being a subdivision of lot 9 DP 896, Land Covenant and Esplanade Strip over Lot 2B DP 2243 and Esplanade Strip over Pt Lot 1 DP 5901</p> <p>Surveyor: Allen Adrian Juffermans Firm: Juffermans Surveyors Ltd Date of Survey: 7/02/2023</p>	<p>Record of Survey</p> <p>DP 587723</p> <p>Deposited on: 2/10/2023</p>
--	--	---



Diag. B



S 3/5	Record of Survey DP 587723	Deposited on: 2/10/2023
Surveyor: Allen Adrian Juffermans Firm: Juffermans Surveyors Ltd Date of Survey: 7/02/2023	Lots 1 to 5 being a subdivision of lot 9 DP 896, Land Covenant and Esplanade Strip over Lot 2B DP 2243 and Esplanade Strip over Pt Lot 1 DP 5901	Land District: Taranaki Digitally Generated Plan Generated on: 21/11/2023 12:07:41 Page 13 of 21



S 4/5

Land District: Taranaki

Digitally Generated Plan

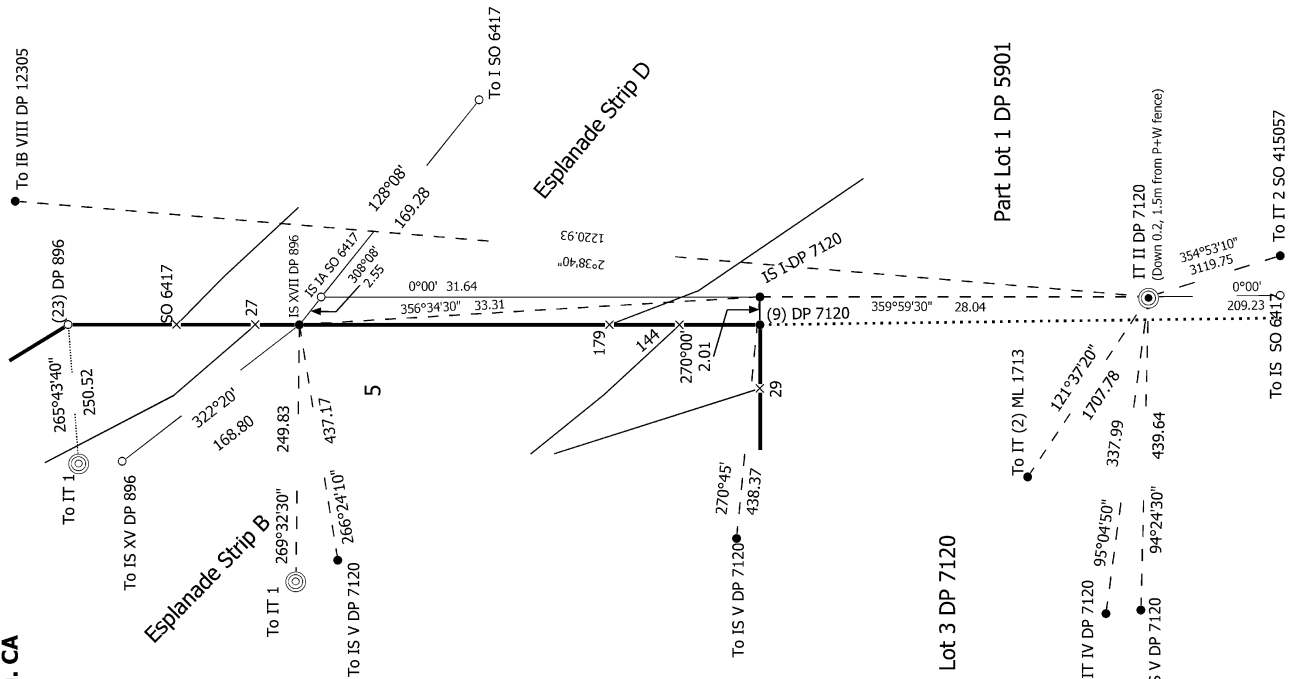
Generated on: 21/11/2023 12:07:01 Page 14 of 21

Lots 1 to 5 being a subdivision of lot 9 DP 896, Land Covenant and Esplanade Strip over Lot 2B DP 2243 and Esplanade Strip over Pt Lot 1 DP 5901

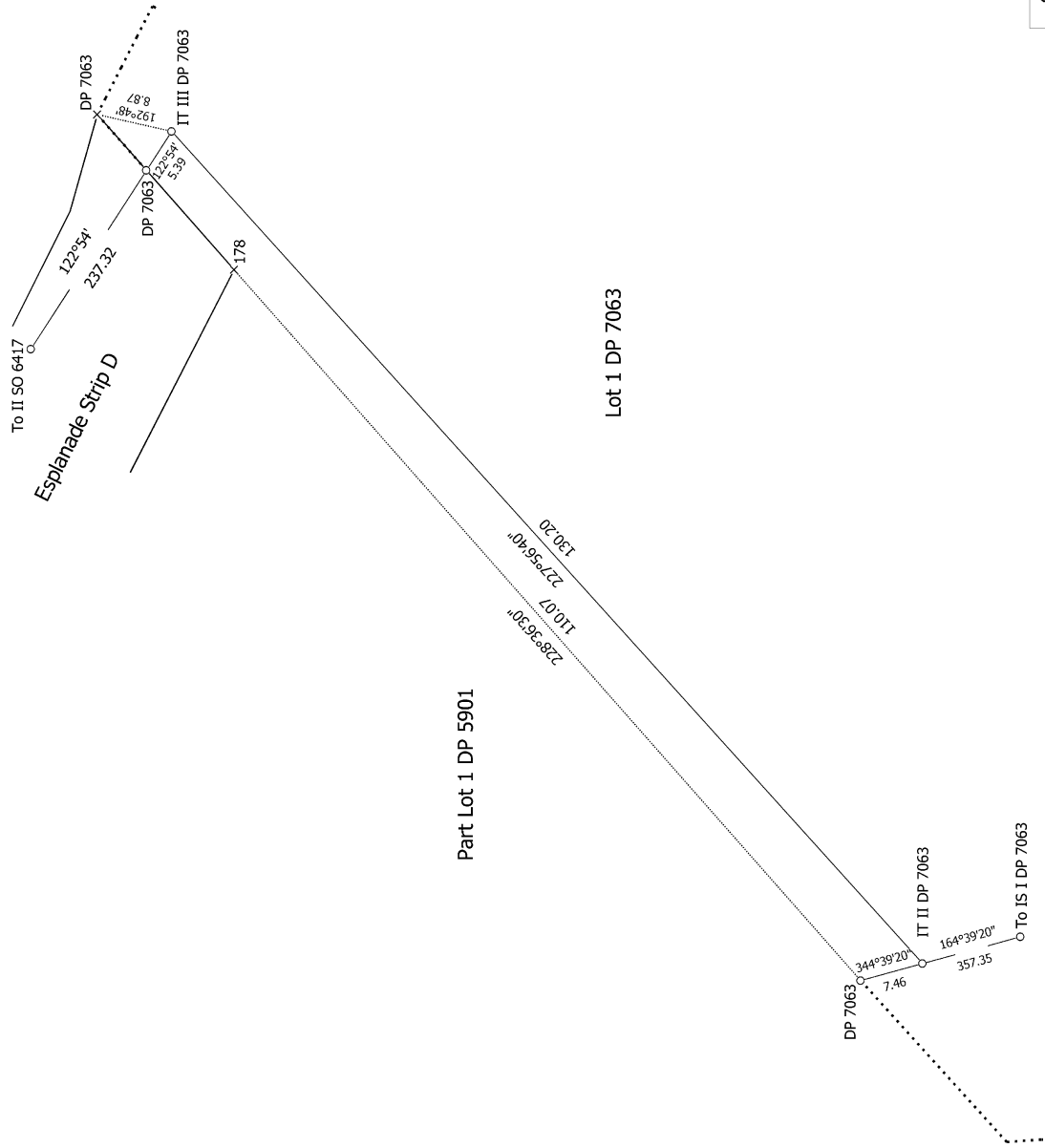
Surveyor: Allen Adrian Juffermans
 Firm: Juffermans Surveyors Ltd
 Date of Survey: 7/02/2023

Record of Survey
 DP 587723
 Deposited on: 2/10/2023

Diag. CA



Diag. DA



S 5/5

Land District: Taranaki

Digitally Generated Plan

Generated on: 21/11/2023 12:07:01 Page 15 of 21

Lots 1 to 5 being a subdivision of lot 9 DP 896, Land Covenant and Esplanade Strip over Lot 2B DP 2243 and Esplanade Strip over Pt Lot 1 DP 5901

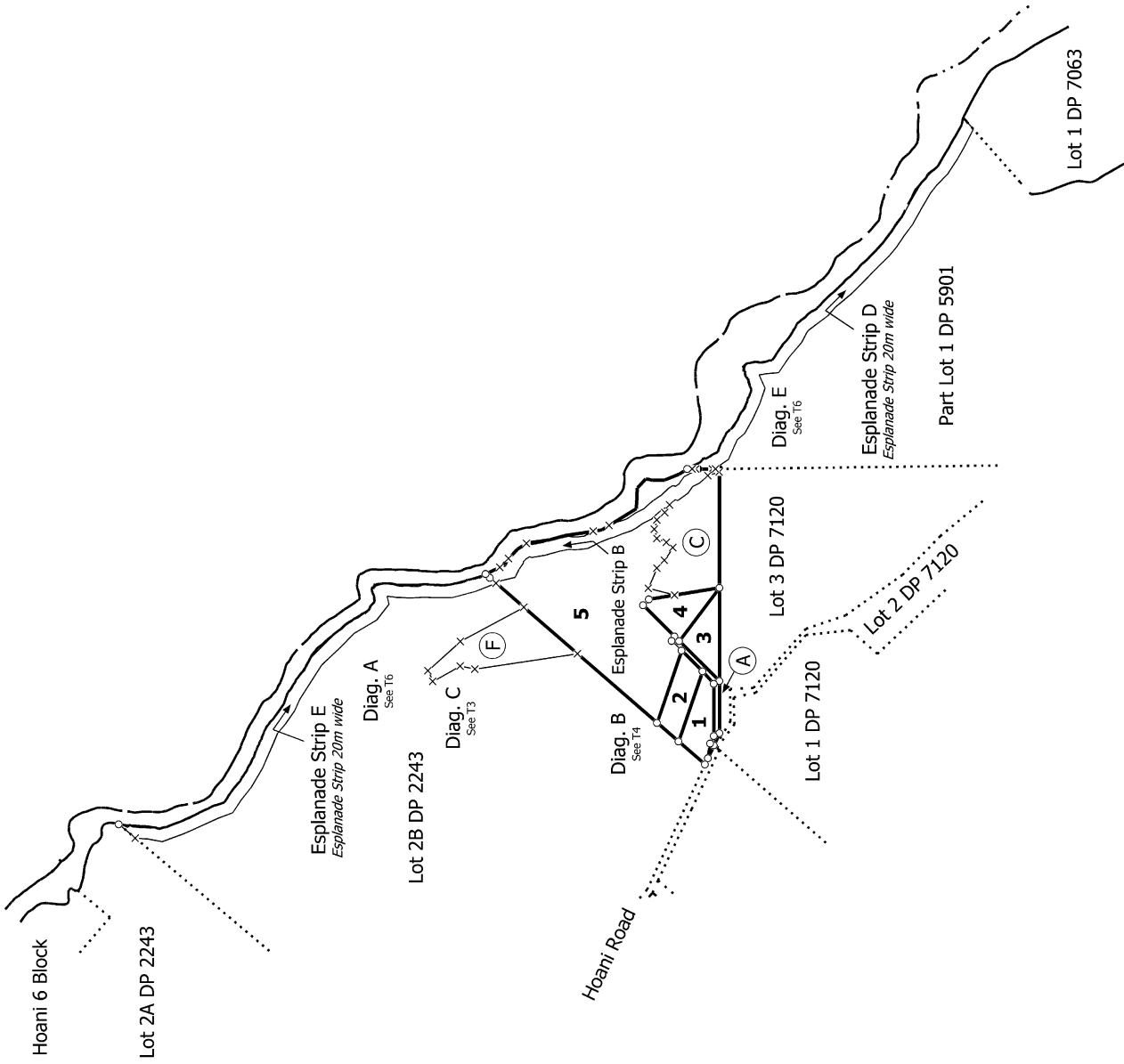
Surveyor: Allen Adrian Juffermans
Firm: Juffermans Surveyors Ltd
Date of Survey: 7/02/2023

Record of Survey
DP 587723

Deposited on: 2/10/2023



Non Primary



T 1/6

Land District: Taranaki

Digitally Generated Plan

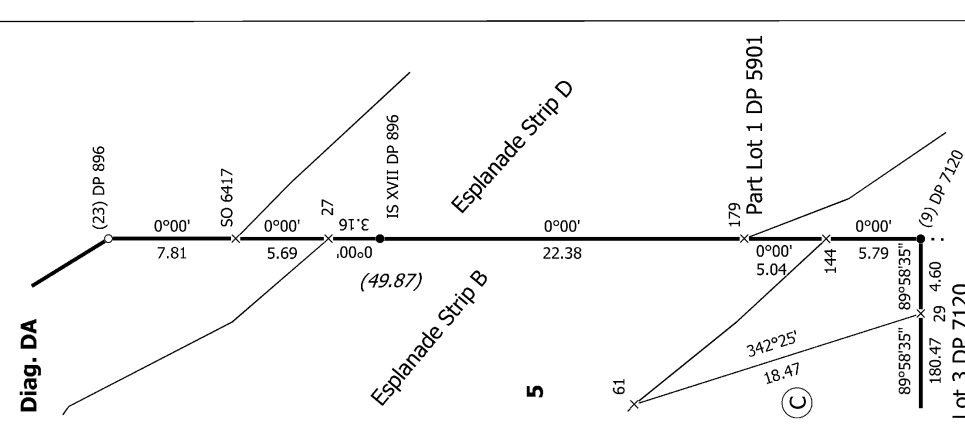
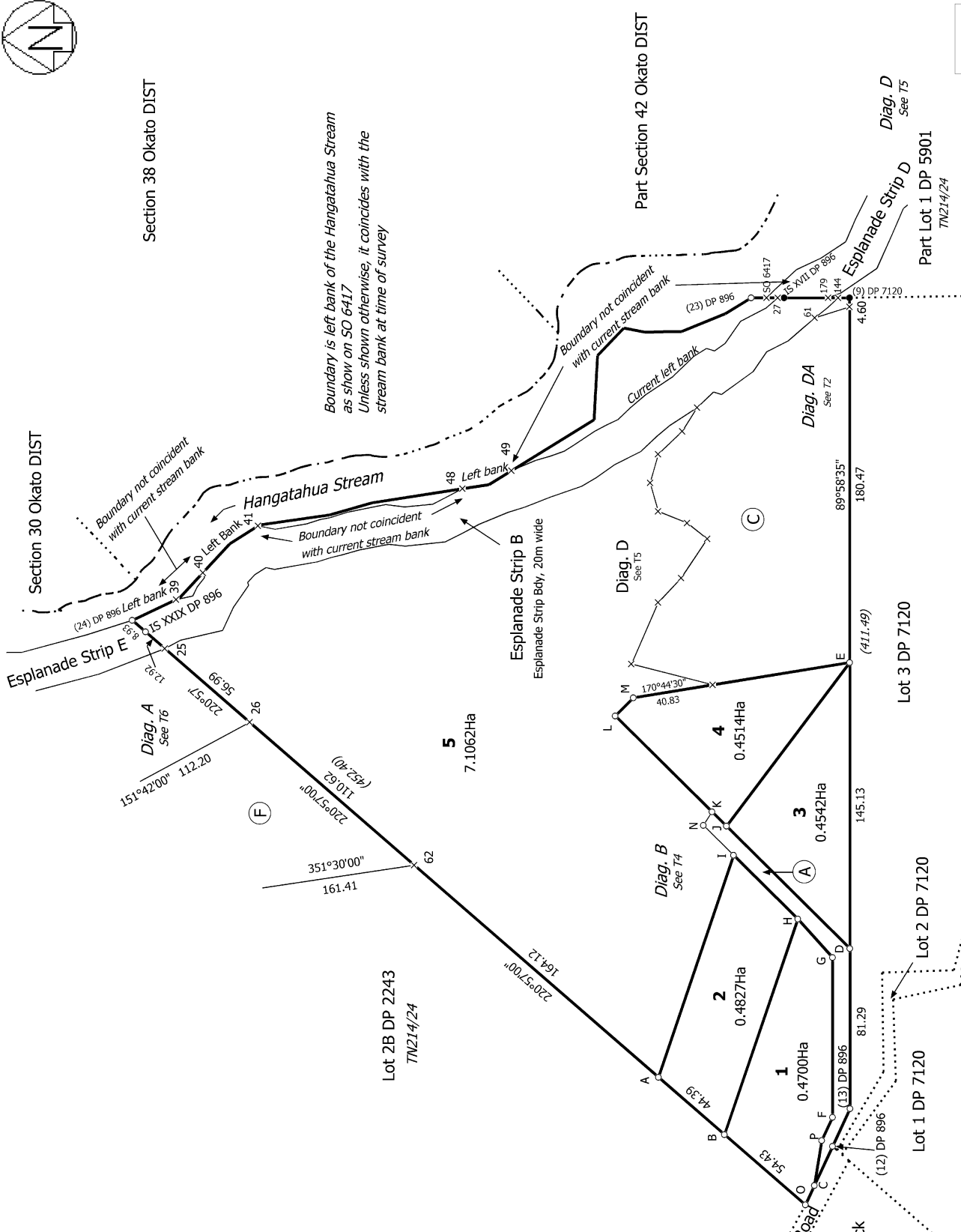
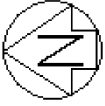
Generated on: 21/11/2023 12:07:01 PM Page 16 of 21

Lots 1 to 5 being a subdivision of lot 9 DP 896, Land Covenant and Esplanade Strip over Lot 2B DP 2243 and Esplanade Strip over Pt Lot 1 DP 5901

Surveyor: Allen Adrian Juffermans
Firm: Juffermans Surveyors Ltd
Date of Survey: 7/02/2023

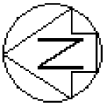
Record of Survey
DP 587723

Deposited on: 2/10/2023

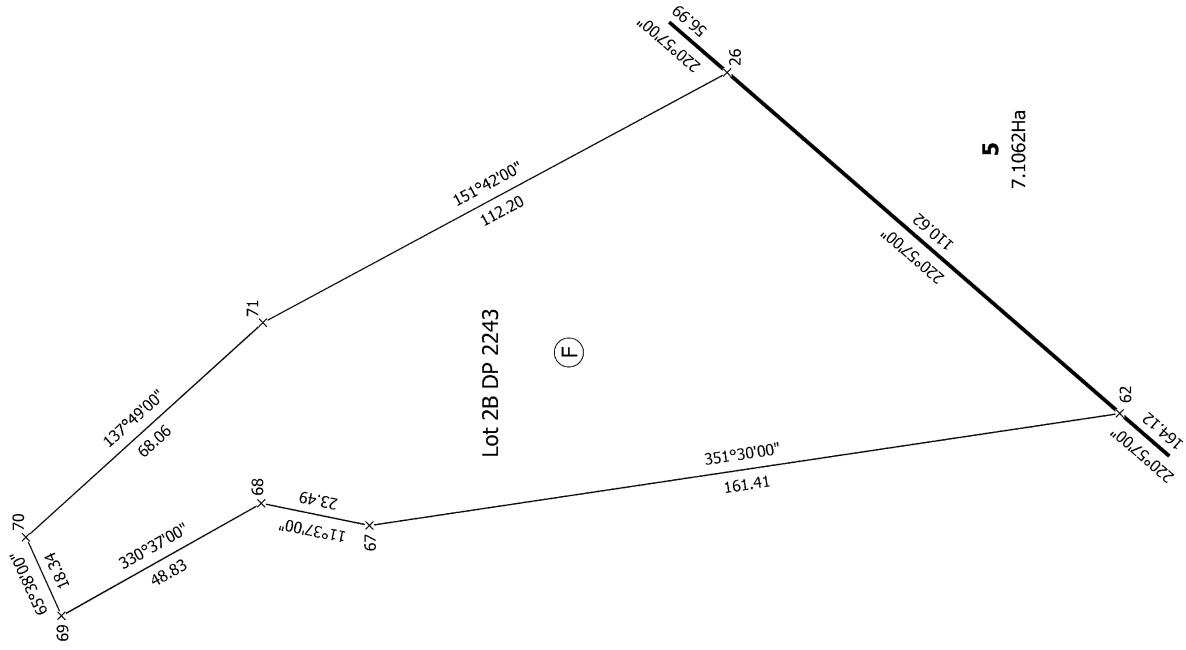


T 2/6

Land District: Taranaki	Surveyor: Allen Adrian Juffermans Firm: Juffermans Surveyors Ltd Date of Survey: 7/02/2023	Record of Survey DP 587723	Deposited on: 2/10/2023
Lots 1 to 5 being a subdivision of lot 9 DP 896, Land Covenant and Esplanade Strip over Lot 2B DP 2243 and Esplanade Strip over Pt Lot 1 DP 5901			
Digitally Generated Plan Generated on: 21/11/2023 12:07:01 Page 17 of 21			



Diag. C



T 3/6

Land District: Taranaki

Digitally Generated Plan

Generated on: 21/11/2023 12:07:00 PM Page 18 of 21

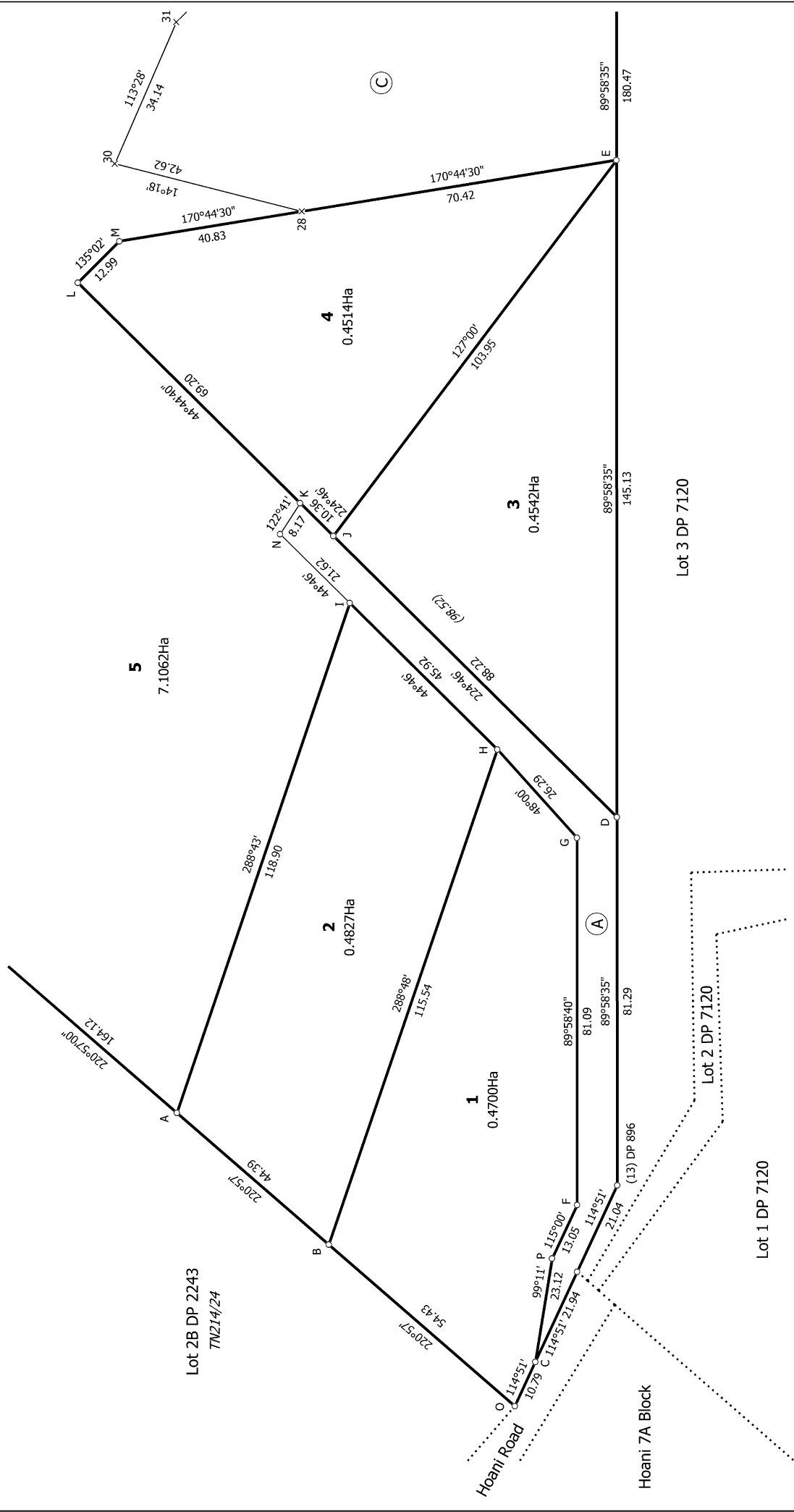
Lots 1 to 5 being a subdivision of lot 9 DP 896, Land Covenant and Esplanade Strip over Lot 2B DP 2243 and Esplanade Strip over Pt Lot 1 DP 5901

Surveyor: Allen Adrian Juffermans
Firm: Juffermans Surveyors Ltd
Date of Survey: 7/02/2023

Record of Survey
DP 587723
Deposited on: 2/10/2023

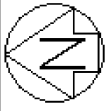


Diag. B



T 4/6

<p>Land District: Taranaki</p> <p>Digitally Generated Plan</p> <p>Generated on: 21/11/2023 12:07:01 Page 19 of 21</p>	<p>Lots 1 to 5 being a subdivision of lot 9 DP 896, Land Covenant and Esplanade Strip over Lot 2B DP 2243 and Esplanade Strip over Pt Lot 1 DP 5901</p>	<p>Surveyor: Allen Adrian Juffermans Firm: Juffermans Surveyors Ltd Date of Survey: 7/02/2023</p>	<p>Record of Survey DP 587723 Deposited on: 2/10/2023</p>
--	--	---	--



Diag. D
Non Primary

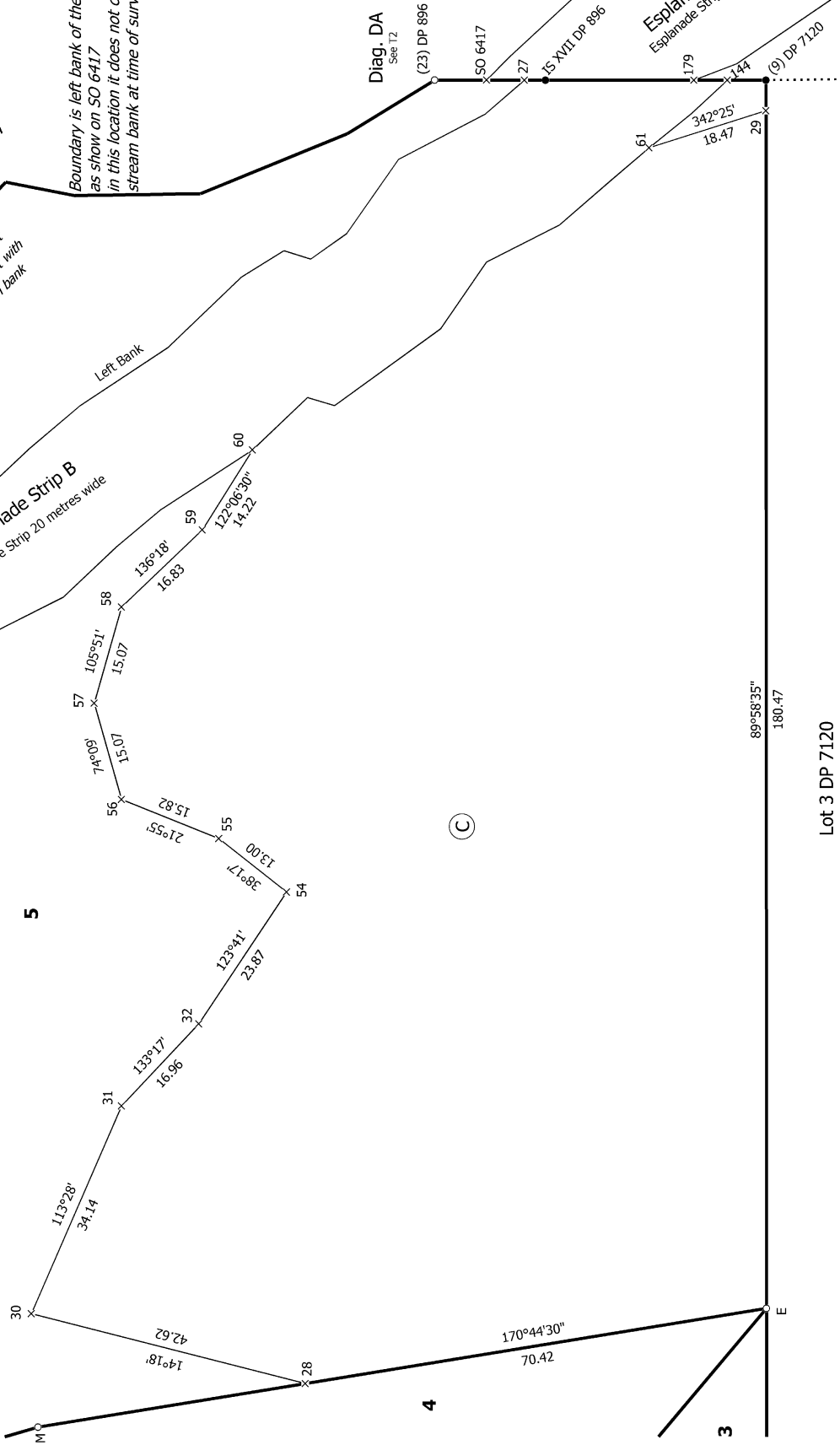
Hangatahau Stream

Boundary not coincident with stream bank

Boundary is left bank of the Hangatahau Stream as show on SO 6417. In this location it does not coincide with the stream bank at time of survey

Esplanade Strip B
Esplanade Strip 20 metres wide

Left Bank



Diag. DA
See T2

(23) DP 896

ISO 6417

15 XVII DP 896

Esplanade Strip D
Esplanade Strip 20 metres wide

Part Lot 1 DP 5901
7N214/24
T 5/6

Surveyor: Allen Adrian Juffermans
Firm: Juffermans Surveyors Ltd
Date of Survey: 7/02/2023

Lots 1 to 5 being a subdivision of lot 9 DP 896, Land Covenant and Esplanade Strip over Lot 2B DP 2243 and Esplanade Strip over Pt Lot 1 DP 5901

Land District: Taranaki
Digitally Generated Plan
Generated on: 21/11/2023 12:07:00 PM Page 20 of 21

Record of Survey
DP 587723
Deposited on: 2/10/2023

Lot 3 DP 7120

89°58'35"

180.47

(C)

5

4

3

30

M

14°18'

42.62

31

34.14

113°28'

16.98

133°17'

23.87

123°41'

38°17'

13.00

21°55'

15.82

56

74°09'

15.07

105°51'

15.07

57

136°18'

16.83

58

122°06'30"

14.22

59

60

61

18.47

342°25'

179

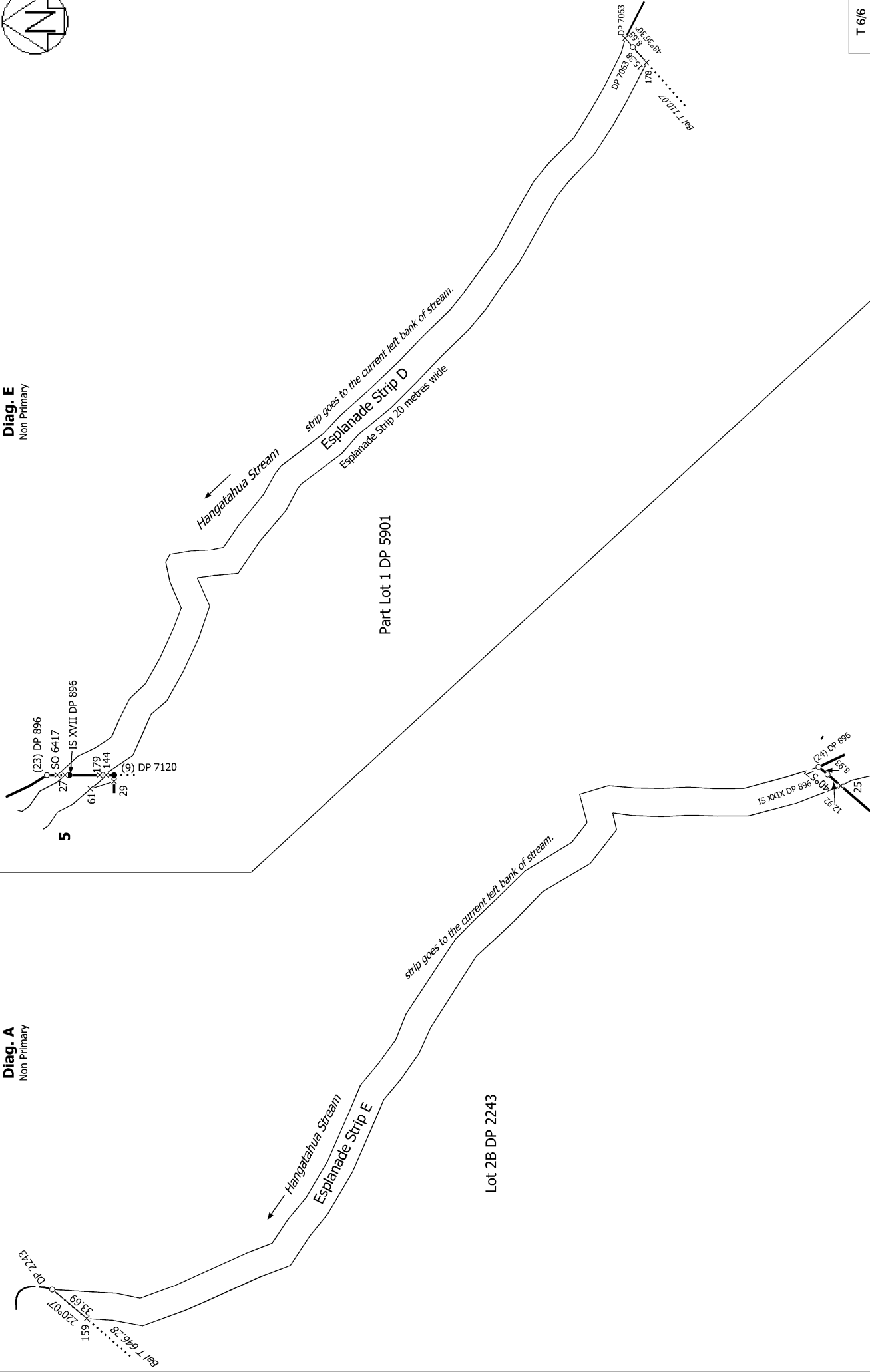
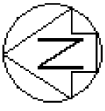
144

(9) DP 7120

E

Diag. E
Non Primary

Diag. A
Non Primary



T 6/6

Land District: Taranaki

Digitally Generated Plan

Generated on: 21/11/2023 12:07am Page 21 of 21

Lots 1 to 5 being a subdivision of lot 9 DP 896, Land Covenant and Esplanade Strip over Lot 2B DP 2243 and Esplanade Strip over Pt Lot 1 DP 5901

Surveyor: Allen Adrian Juffermans
Firm: Juffermans Surveyors Ltd
Date of Survey: 7/02/2023

Record of Survey
DP 587723

Deposited on: 2/10/2023