



Record of Survey - DP 587496

Survey Number DP 587496
Surveyor Reference 15493-24 Perth St
Surveyor Gavin Walter Read
Survey Firm Clark Fortune McDonald & Associates
Surveyor Declaration I Gavin Walter Read, being a licensed cadastral surveyor, certify that--
(a) this dataset provided by me and its related survey are accurate, correct and in accordance with the Cadastral Survey Act 2002 and Cadastral Survey Rules 2021; and
(b) the survey was undertaken by me or under my personal direction.
Declared on 02 Feb 2023 07:18 PM

Survey Details

Dataset Description	Lot 1 Being Definition of Pt RS 33		
Purpose	Limited Title		
Status	Deposited	Type	Survey
Land District	Canterbury	Survey Class	Class A
Meridional Circuit	Mount Pleasant 2000	Vertical Datum	None

Survey Dates

Surveyed Date	30/01/2023	Certified Date	02/02/2023
Submitted Date	02/02/2023 19:18:46	Survey Approval Date	07/03/2023
Deposit Date	19/04/2023		

Referenced Surveys

Survey Number	Land District	Bearing Correction
DP 47345	Canterbury	0°00'00"
FB 2406/95	Canterbury	0°00'00"
SO 11997	Canterbury	0°00'00"
DP 46336	Canterbury	0°00'40"
LT 37264	Canterbury	0°00'40"
DP 337747	Canterbury	0°00'00"
SO 342605	Canterbury	0°00'00"
DP 360148	Canterbury	0°00'00"
DP 418313	Canterbury	0°00'00"
SO 455002	Canterbury	0°00'00"

Territorial Authorities

Christchurch City

Comprised In

RT CB382/121 Ltd



Record of Survey - DP 587496

Created Parcels

Parcels	Parcel Intent	Area	RT Reference
Lot 1 Deposited Plan 587496	Fee Simple Title	0.0551 Ha	1114825
Total Area		<u>0.0551 Ha</u>	

Mark and Vector

Survey Number DP 587496

Meridional Circuit Mount Pleasant 2000

From	To	Code	Bearing	Adpt Surv	Bearing Correction	Distance	Adpt Surv	Class
NAIL 1 DP 587496	MA NO REC DP 418313	ob37	176°12'00" M			142.57 M		
MA NO REC DP 418313	NAIL 2 DP 587496	ob52	357°39'50" M			207.61 M		
NAIL 2 DP 587496	NAIL 1 DP 587496	ob53	180°52'00" M			65.18 M		
NAIL 1 DP 587496	MA 3 DP 587496	ob38	134°23'00" M			11.47 M		
NAIL 1 DP 587496	IT 4 DP 337747	ob39	35°37'00" M			15.50 M		
NAIL 1 DP 587496	HN 31 DP 337747	ob40	47°57'00" M			14.65 M		
NAIL 1 DP 587496	HN 19 DP 337747	ob41	68°45'00" M			11.69 M		
NAIL 1 DP 587496	RN VI FB 2406/95	ob42	156°41'00" M			28.08 M		
NAIL 1 DP 587496	IS I SO 342605	ob43	175°24'30" M			117.41 M		
NAIL 1 DP 587496	IR I DP 360148	ob44	11°30'00" M			44.77 M		
MA 3 DP 587496	IR 1 DP 403014	ob54	42°28'40" M			116.52 M		
IT 4 DP 337747	IT 1 SO 455002	ob58	46°12'00" A	SO 455002	0°00'00"	79.70 A	SO 455002	
IT 1 SO 455002	IT I DP 71795	ob16	278°20'00" A	SO 455002	0°00'00"	62.55 A	SO 455002	
IT I DP 71795	IR I DP 360148	ob64	172°37'00" A	SO 455002	0°00'00"	33.24 A	SO 455002	
IS I SO 342605	IT 3 DP 337747	ob62	179°50'00" A	SO 342605	0°00'00"	24.765 A	SO 342605	
IT 3 DP 337747	MA NO REC DP 418313	ob34	179°50'00" A	DP 418313	0°00'00"	0.44 A	DP 418313	
RN VI FB 2406/95	IT I DP 46336	ob61	266°32'00" A	FB 2406/95	0°00'00"	6.18 A	FB 2406/95	
IT I DP 46336	IT II DP 46336	ob22	359°49'45" A	DP 46336	0°00'40"	5.99 A	DP 46336	
IT II DP 46336	IS I DP 10602	ob25	359°49'45" A	DP 46336	0°00'40"	41.57 A	DP 46336	
IS I DP 10602	IS II SO 11997	ob26	359°49'45" A	DP 46336	0°00'40"	7.19 A	DP 46336	
IS II SO 11997	IT I DP 71795	ob27	359°49'45" A	DP 360148	0°00'00"	48.25 A	SO 11997	
IS I SO 342605	IT 2 DP 337747	ob63	359°50'00" A	SO 455002	0°00'00"	116.76 C		
IT 2 DP 337747	IT 4 DP 337747	ob28	359°50'00" A	SO 455002	0°00'00"	12.89 A	DP 337747	
IT I DP 46336	PEG (1) DP 46336	ob23	146°23'40" A	DP 46336	0°00'40"	11.07 A	DP 46336	
PEG (1) DP 46336	PEG (2) DP 46336	ob0	359°49'45" A	DP 46336	0°00'40"	17.30 A	DP 46336	
PEG (2) DP 46336	IT II DP 46336	ob1	251°03'40" A	DP 46336	0°00'40"	6.44 A	DP 46336	
IT 2 DP 337747	DISK 5 DP 587496	ob29	90°38'00" A	DP 337747	0°00'00"	33.74 A	DP 337747	
DISK 5 DP 587496	PEG 18 DP 337747	ob4	268°54'40" A	DP 337747	0°00'00"	6.24 A	DP 337747	Class A

Mark and Vector

Survey Number DP 587496

Meridional Circuit Mount Pleasant 2000

From	To	Code	Bearing	Adpt Surv	Bearing Correction	Distance	Adpt Surv	Class
PEG 18 DP 337747	PEG 17 DP 337747	ob6	268°54'40"	A DP 337747	0°00'00"	3.96 A	DP 337747	Class A
PEG 17 DP 337747	PEG 16 DP 337747	ob7	268°54'40"	A DP 337747	0°00'00"	4.00 A	DP 337747	Class A
PEG 16 DP 337747	PEG 15 DP 337747	ob8	268°54'40"	A DP 337747	0°00'00"	3.98 A	DP 337747	Class A
PEG 15 DP 337747	PEG 14 DP 337747	ob9	268°54'40"	A DP 337747	0°00'00"	3.97 A	DP 337747	Class A
PEG 14 DP 337747	PEG 13 DP 337747	ob10	268°54'40"	A DP 337747	0°00'00"	3.25 A	DP 337747	Class A
PEG 13 DP 337747	PEG 12 DP 337747	ob11	268°54'40"	A DP 337747	0°00'00"	3.25 A	DP 337747	Class A
PEG 12 DP 337747	PEG 11 DP 337747	ob12	268°54'40"	A DP 337747	0°00'00"	3.25 A	DP 337747	Class A
PEG 11 DP 337747	PEG 9 DP 337747	ob13	268°54'40"	A DP 337747	0°00'00"	1.00 A	DP 337747	Class A
PEG 9 DP 337747	IT 2 DP 337747	ob14	319°43'00"	A DP 337747	0°00'00"	1.31 A	DP 337747	
IT I DP 46336	DISK 7 DP 587496	ob24	77°03'40"	A DP 46336	0°00'40"	38.79 A	DP 46336	
DISK 7 DP 587496	DISK 5 DP 587496	ob35	0°09'00"	A DP 337747	0°00'00"	16.80 A	DP 337747	Class A
PEG (2) DP 46336	PEG 6 DP 587496	ob2	268°54'40"	A DP 46336	0°00'40"	1.07 A	DP 46336	Class A
PEG 6 DP 587496	PEG 9 DP 337747	ob15	359°49'45"	A DP 46336	0°00'40"	16.80 A	DP 46336	Class A
PEG (2) DP 46336	DISK 7 DP 587496	ob3	88°54'40"	A DP 46336	0°00'40"	31.73 A	DP 46336	Class A
IT 4 DP 337747	HN 31 DP 337747	ob59	146°19'00"	A DP 337747	0°00'00"	3.34 A	DP 337747	
IT 2 DP 337747	HN 19 DP 337747	ob30	22°02'00"	A DP 337747	0°00'00"	4.88 A	DP 337747	
IT 1 SO 455002	IR 1 DP 403014	ob17	63°29'00"	A SO 455002	0°00'00"	22.71 A	SO 455002	
IR 1 DP 403014	IT I DP 83334 POSN ABT2011	ob31	269°11'00"	A SO 455002	0°00'00"	7.21 A	SO 455002	
IT I DP 83334 POSN ABT2011	IT I DP 47345	ob32	269°16'00"	A DP 47345	0°00'00"	22.15 A	DP 47345	
IT I DP 47345	IT I DP 6389	ob33	269°16'00"	A DP 47345	0°00'00"	9.26 A	DP 47345	
IT I DP 6389	IT I DP 7405	ob65	269°16'00"	A DP 47345	0°00'00"	15.14 A	DP 47345	
IT I DP 7405	IT I DP 71795	ob66	269°16'00"	A DP 47345	0°00'00"	28.45 A	DP 47345	
MA 3 DP 587496	IR 1 DP 360148	ob55	0°48'40"	M		51.91 M		
DISK 5 DP 587496	PEG 10 DP 337747	ob5	0°09'00"	A DP 337747	0°00'00"	13.60 A	DP 337747	
PEG 10 DP 337747	PEG 7 DP 337747	ob18	0°09'00"	A DP 337747	0°00'00"	3.00 A	DP 337747	

Mark and Vector

Survey Number DP 587496

Meridional Circuit Mount Pleasant 2000

From	To	Code	Bearing	Adpt Surv	Bearing Correction	Distance	Adpt Surv	Class
PEG 7 DP 337747	PEG VI LT 37264	ob21	0°09'00"	A DP 337747	0°00'00"	1.46 C		
PEG VI LT 37264	IT VII LT 37264	ob19	31°50'40"	A LT 37264	0°00'40"	9.53 A	LT 37264	
IT VII LT 37264	IT I DP 6389	ob20	0°22'20"	A LT 37264	0°00'40"	51.92 A	LT 37264	
IT 4 DP 337747	PEG 7 DP 337747	ob60	84°21'40"	A DP 337747	0°00'00"	33.99 A	DP 337747	
NAIL 1 DP 587496	PEG 9 DP 337747	ob45	97°24'00"	M		9.99 M		
NAIL 1 DP 587496	PEG 13 DP 337747	ob46	93°46'00"	M		17.45 M		
NAIL 1 DP 587496	PEG 14 DP 337747	ob47	93°00'00"	M		20.69 M		
NAIL 1 DP 587496	PEG 17 DP 337747	ob48	91°30'00"	M		32.62 M		
NAIL 1 DP 587496	PEG 18 DP 337747	ob49	91°13'00"	M		36.57 M		
NAIL 1 DP 587496	DISK 5 DP 587496	ob50	90°53'00"	M		42.81 M		
NAIL 1 DP 587496	PEG 6 DP 587496	ob51	151°12'00"	M		20.66 M		
MA 3 DP 587496	DISK 7 DP 587496	ob56	105°17'00"	M		35.83 M		
MA 3 DP 587496	PEG 8 DP 587496	ob57	105°14'00"	M		35.85 M		
DISK 7 DP 587496	PEG 8 DP 587496	ob36	53°01'00"	C		0.04 C		

Mark Name	Mark Condition	Description
DISK 5 DP 587496		in conc found
DISK 7 DP 587496		in post
IR 1 DP 403014		20mm Iron rod flush behind sealed footpath.
IR I DP 360148		FL
IS I SO 342605		Fl in Seal
IT 1 SO 455002		0.3d next to FP
IT 3 DP 337747		FLUSH
IT 4 DP 337747		FLUSH
IT I DP 71795		FL, IN POSN IT I DP 4836
IT I DP 83334 POSN A		Flush in seal. DP 83334 FB 765 p 124 dated 10/03/00 notes
MA 3 DP 587496		in kerb
MA NO REC DP 41831		FL. IN KERB
NAIL 1 DP 587496		Fl in FP
NAIL 2 DP 587496		FL in FP

Mark and Vector

Survey Number DP 587496
Meridional Circuit Mount Pleasant 2000

Mark Name	Mark Condition	Description
PEG 8 DP 587496		PEG DP 46336 dist
RN VI FB 2406/95		In low wall
IT 2 DP 337747	Searched For and Not Found	
IT I DP 46336	Searched For and Not Found	
IT II DP 46336	Searched For and Not Found	
PEG 12 DP 337747	Searched For and Not Found	
PEG 15 DP 337747	Searched For and Not Found	
PEG 16 DP 337747	Searched For and Not Found	

*** End of Report ***



Diag. C

S 2/3

Record of Survey
 DP 587496
 Deposited on: 19/04/2023

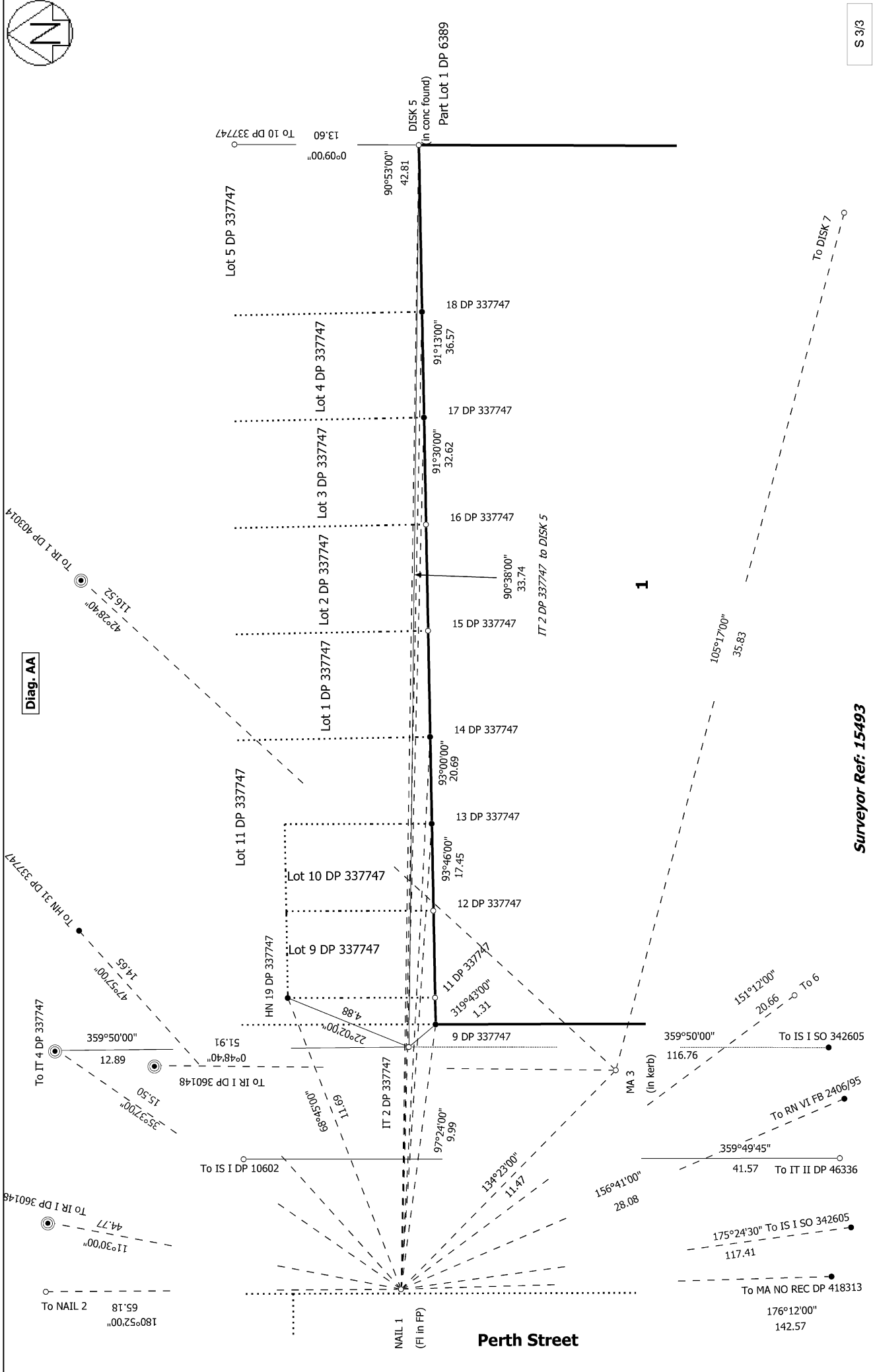
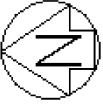
Surveyor: Gavin Walter Read
 Firm: Clark Fortune McDonald & Associate
 Date of Survey: 30/01/2023

Lot 1 Being Definition of Pt RS 33

Land District: Canterbury
 Digitally Generated Plan
 Generated on: 26/07/2023 06:35:56 AM Page 9 of 11

Surveyor Ref: 15493

Perth Street



S 3/3

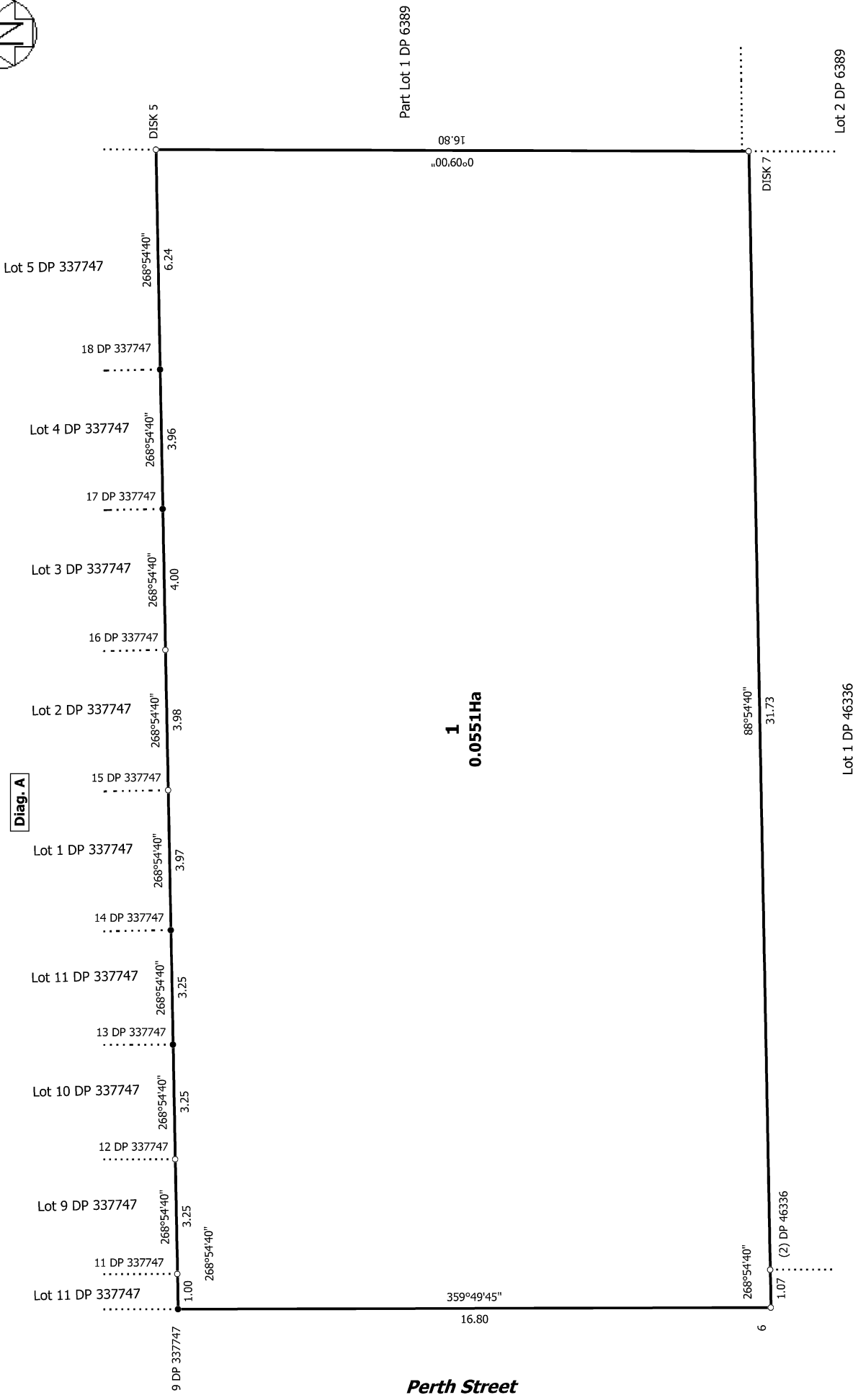
Record of Survey
DP 587496
Deposited on: 19/04/2023

Surveyor: Gavin Walter Read
Firm: Clark Fortune McDonald & Associate
Date of Survey: 30/01/2023

Surveyor Ref: 15493
Lot 1 Being Definition of Pt RS 33

Land District: Canterbury

Digitally Generated Plan
Generated on: 26/07/2023 06:35:56 AM Page 10 of 11



Diag. A

T 1/1

Surveyor Ref: 15493

Land District: Canterbury

Lot 1 Being Definition of Pt RS 33

Surveyor: Gavin Walter Read
Firm: Clark Fortune McDonald & Associate
Date of Survey: 30/01/2023

**Record of Survey
DP 587496**

Digitally Generated Plan
Generated on: 26/07/2023 06:35am | Page 11 of 11

Deposited on: 19/04/2023