



# Record of Survey - DP 587491

---

**Survey Number** DP 587491  
**Surveyor Reference** 2301 Hastings St  
**Surveyor** Julie Marie McMillan  
**Survey Firm** Mainland Surveying Limited  
**Surveyor Declaration** I Julie Marie McMillan, being a licensed cadastral surveyor, certify that--  
(a) this dataset provided by me and its related survey are accurate, correct and in accordance with the Cadastral Survey Act 2002 and Cadastral Survey Rules 2021; and  
(b) the survey was undertaken by me or under my personal direction.  
Declared on 11 Aug 2023 12:03 PM

---

## Survey Details

**Dataset Description** Lots 1-6 being subdivision of Pt Lot 18, Pt Lot 19 & Pt Lot 20 DP 826  
**Purpose** LT Subdivision  
**Status** Deposited **Type** Survey  
**Land District** Canterbury **Survey Class** Class A  
**Meridional Circuit** Mount Pleasant 2000 **Vertical Datum** None

---

## Survey Dates

**Surveyed Date** 18/10/2022 **Certified Date** 11/08/2023  
**Submitted Date** 11/08/2023 12:03:52 **Survey Approval Date** 16/08/2023  
**Deposit Date** 12/07/2023

---

## Referenced Surveys

| Survey Number | Land District | Bearing Correction |
|---------------|---------------|--------------------|
| DP 12665      | Canterbury    | 0°01'00"           |
| DP 35338      | Canterbury    |                    |
| DP 3658       | Canterbury    | 0°01'00"           |
| DP 350241     | Canterbury    | 0°00'00"           |
| DP 404675     | Canterbury    | 0°00'00"           |
| DP 405827     | Canterbury    | 0°00'00"           |
| DP 427906     | Canterbury    | 0°00'00"           |

---

## Territorial Authorities

Christchurch City

---

## Comprised In

RT CB363/169

---

## Created Parcels

| Parcels                     | Parcel Intent    | Area      | RT Reference |
|-----------------------------|------------------|-----------|--------------|
| Lot 1 Deposited Plan 587491 | Fee Simple Title | 0.0110 Ha | 1114817      |
| Lot 2 Deposited Plan 587491 | Fee Simple Title | 0.0073 Ha | 1114818      |
| Lot 3 Deposited Plan 587491 | Fee Simple Title | 0.0073 Ha | 1114819      |
| Lot 4 Deposited Plan 587491 | Fee Simple Title | 0.0073 Ha | 1114820      |
| Lot 5 Deposited Plan 587491 | Fee Simple Title | 0.0088 Ha | 1114821      |

# Record of Survey - DP 587491

---

## Created Parcels

| Parcels                      | Parcel Intent    | Area      | RT Reference |
|------------------------------|------------------|-----------|--------------|
| Lot 6 Deposited Plan 587491  | Fee Simple Title | 0.0262 Ha | Multiple     |
| Area A Deposited Plan 587491 | Easement         |           |              |
| Area B Deposited Plan 587491 | Easement         |           |              |
| Area C Deposited Plan 587491 | Easement         |           |              |
| Area D Deposited Plan 587491 | Easement         |           |              |
| Area E Deposited Plan 587491 | Easement         |           |              |
| Area F Deposited Plan 587491 | Easement         |           |              |
| Area G Deposited Plan 587491 | Easement         |           |              |
| Area H Deposited Plan 587491 | Easement         |           |              |
| Area I Deposited Plan 587491 | Easement         |           |              |
| Area J Deposited Plan 587491 | Easement         |           |              |
| Area K Deposited Plan 587491 | Easement         |           |              |
| Area L Deposited Plan 587491 | Easement         |           |              |
| Area M Deposited Plan 587491 | Easement         |           |              |
| Area N Deposited Plan 587491 | Easement         |           |              |
| Area O Deposited Plan 587491 | Easement         |           |              |
| Area P Deposited Plan 587491 | Easement         |           |              |
| Area Q Deposited Plan 587491 | Easement         |           |              |
| Area R Deposited Plan 587491 | Easement         |           |              |
| Area S Deposited Plan 587491 | Easement         |           |              |
| Area T Deposited Plan 587491 | Easement         |           |              |
| Area U Deposited Plan 587491 | Easement         |           |              |
| Area V Deposited Plan 587491 | Covenant - Land  |           |              |
| Area W Deposited Plan 587491 | Covenant - Land  |           |              |
| Area X Deposited Plan 587491 | Covenant - Land  |           |              |
| Area Y Deposited Plan 587491 | Covenant - Land  |           |              |
| Area Z Deposited Plan 587491 | Covenant - Land  |           |              |
| <b>Total Area</b>            |                  | 0.0679 Ha |              |

# Mark and Vector

Survey Number DP 587491

Meridional Circuit Mount Pleasant 2000

| From                | To                  | Code  | Bearing      | Adpt Surv | Bearing Correction | Distance | Adpt Surv | Class   |
|---------------------|---------------------|-------|--------------|-----------|--------------------|----------|-----------|---------|
| MA V DP 427906      | IT NO REC. DP 81302 | ob21  | 269°48'40" M |           |                    | 16.10 M  |           |         |
| IT NO REC. DP 81302 | IR I DP 427906      | ob2   | 269°48'40" M |           |                    | 33.71 M  |           |         |
| IR I DP 427906      | IS III DP 12665     | ob3   | 269°48'40" A | DP 427906 | 0°00'00"           | 1.12 C   |           |         |
| IS III DP 12665     | IT I DP 35338       | ob7   | 269°48'40" A | DP 405827 | 0°00'00"           | 35.22 A  | DP 35338  |         |
| IT I DP 35338       | IR III DP 405827    | ob5   | 269°48'40" M |           |                    | 13.43 M  |           |         |
| IR III DP 405827    | IR I DP 404675      | ob6   | 269°48'40" M |           |                    | 9.57 M   |           |         |
| IR I DP 404675      | IR V DP 409768      | ob8   | 269°48'40" M |           |                    | 30.76 M  |           |         |
| IR V DP 409768      | Nail 1 DP 587491    | ob0   | 75°23'00" M  |           |                    | 47.68 M  |           |         |
| Nail 1 DP 587491    | MA V DP 427906      | ob149 | 97°03'00" M  |           |                    | 94.47 M  |           |         |
| IR V DP 409768      | MN 2 DP 587491      | ob1   | 90°41'00" M  |           |                    | 68.63 M  |           |         |
| MN 2 DP 587491      | IR I DP 427906      | ob131 | 87°02'00" M  |           |                    | 21.49 M  |           |         |
| IR I DP 404675      | PEG H DP 405827     | ob9   | 156°49'00" A | DP 405827 | 0°00'00"           | 43.25 A  | DP 405827 |         |
| PEG H DP 405827     | PEG (1) DP 826      | ob16  | 89°30'30" A  | DP 405827 | 0°00'00"           | 30.14 A  | DP 405827 |         |
| PEG (1) DP 826      | PEG 16 DP 350241    | ob18  | 89°30'30" A  | DP 3658   | 0°01'00"           | 10.65 A  | DP 404675 |         |
| PEG 16 DP 350241    | PEG 17 DP 350241    | ob19  | 89°30'30" A  | DP 350241 | 0°00'00"           | 0.54 A   | DP 350241 |         |
| PEG 17 DP 350241    | PEG 18 DP 350241    | ob20  | 359°49'40" A | DP 350241 | 0°00'00"           | 5.38 A   | DP 350241 |         |
| PEG 18 DP 350241    | PEG (2) DP 826      | ob128 | 359°49'40" A | DP 12665  | 0°01'00"           | 30.18 A  | DP 12665  |         |
| PEG (2) DP 826      | IS III DP 12665     | ob129 | 359°49'40" A | DP 12665  | 0°00'00"           | 4.02 A   | DP 12665  |         |
| IR I DP 404675      | PEG D DP 405827     | ob10  | 103°11'00" A | DP 405827 | 0°00'00"           | 17.38 A  | DP 405827 |         |
| PEG D DP 405827     | UNMK 26 DP 587491   | ob11  | 89°48'40" C  |           |                    | 3.38 C   |           | Class A |
| UNMK 26 DP 587491   | UNMK 27 DP 587491   | ob42  | 89°48'40" C  |           |                    | 6.66 C   |           | Class A |
| UNMK 27 DP 587491   | UNMK 28 DP 587491   | ob44  | 89°48'40" C  |           |                    | 2.27 C   |           | Class A |
| UNMK 28 DP 587491   | UNMK 29 DP 587491   | ob46  | 89°48'40" C  |           |                    | 4.00 C   |           | Class A |
| UNMK 29 DP 587491   | DISK 10 DP 587491   | ob95  | 89°48'40" C  |           |                    | 1.50 C   |           | Class A |
| DISK 10 DP 587491   | DISK 11 DP 587491   | ob22  | 89°48'40" C  |           |                    | 3.40 C   |           | Class A |
| DISK 11 DP 587491   | PEG (2) DP 826      | ob14  | 89°48'40" A  | DP 405827 | 0°00'00"           | 20.10 C  |           |         |
| PEG H DP 405827     | DISK 12 DP 587491   | ob17  | 359°48'40" A | DP 405827 | 0°00'00"           | 3.56 C   |           |         |

# Mark and Vector

Survey Number DP 587491

Meridional Circuit Mount Pleasant 2000

| From                 | To                   | Code  | Bearing    | Adpt Surv | Bearing Correction | Distance | Adpt Surv | Class   |
|----------------------|----------------------|-------|------------|-----------|--------------------|----------|-----------|---------|
| DISK 12 DP<br>587491 | UNMK 30 DP<br>587491 | ob12  | 359°48'40" | C         |                    | 4.40 C   |           | Class A |
| UNMK 30 DP<br>587491 | PEG 13 DP<br>587491  | ob108 | 359°48'40" | C         |                    | 4.80 C   |           | Class A |
| PEG 13 DP<br>587491  | PEG 14 DP<br>587491  | ob23  | 359°48'40" | C         |                    | 4.43 C   |           | Class A |
| PEG 14 DP<br>587491  | PEG I DP<br>405827   | ob25  | 359°48'40" | C         |                    | 0.09 C   |           | Class A |
| PEG 15 DP<br>587491  | PEG 16 DP<br>587491  | ob27  | 359°48'40" | C         |                    | 4.14 C   |           | Class A |
| PEG 16 DP<br>587491  | PEG 17 DP<br>587491  | ob29  | 359°48'40" | C         |                    | 4.13 C   |           | Class A |
| PEG 17 DP<br>587491  | PEG D DP<br>405827   | ob31  | 359°48'40" | C         |                    | 6.18 C   |           | Class A |
| DISK 12 DP<br>587491 | UNMK 31 DP<br>587491 | ob13  | 89°30'30"  | C         |                    | 3.00 C   |           | Class A |
| UNMK 31 DP<br>587491 | UNMK 32 DP<br>587491 | ob110 | 89°30'30"  | C         |                    | 15.41 C  |           | Class A |
| UNMK 32 DP<br>587491 | DISK 18 DP<br>587491 | ob123 | 89°30'30"  | C         |                    | 2.80 C   |           | Class A |
| DISK 18 DP<br>587491 | UNMK 33 DP<br>587491 | ob15  | 359°48'40" | C         |                    | 5.00 C   |           | Class A |
| UNMK 33 DP<br>587491 | UNMK 35 DP<br>587491 | ob33  | 359°48'40" | C         |                    | 20.93 C  |           | Class A |
| UNMK 35 DP<br>587491 | DISK 11 DP<br>587491 | ob127 | 359°48'40" | C         |                    | 6.16 C   |           | Class A |
| PEG 13 DP<br>587491  | PEG 19 DP<br>587491  | ob24  | 89°48'40"  | C         |                    | 4.95 C   |           | Class A |
| PEG 19 DP<br>587491  | PEG 20 DP<br>587491  | ob34  | 179°48'40" | C         |                    | 0.74 C   |           | Class A |
| PEG 20 DP<br>587491  | UNMK 36 DP<br>587491 | ob35  | 89°48'40"  | C         |                    | 3.05 C   |           | Class A |
| UNMK 36 DP<br>587491 | UNMK 37 DP<br>587491 | ob119 | 89°48'40"  | C         |                    | 4.71 C   |           | Class A |
| UNMK 37 DP<br>587491 | PEG 21 DP<br>587491  | ob104 | 89°48'40"  | C         |                    | 5.10 C   |           | Class A |
| PEG 21 DP<br>587491  | UNMK 38 DP<br>587491 | ob36  | 359°48'40" | C         |                    | 0.95 C   |           | Class A |
| UNMK 38 DP<br>587491 | PEG 22 DP<br>587491  | ob106 | 359°48'40" | C         |                    | 4.23 C   |           | Class A |
| PEG 22 DP<br>587491  | PEG 23 DP<br>587491  | ob37  | 359°48'40" | C         |                    | 4.13 C   |           | Class A |
| PEG 23 DP<br>587491  | PEG 24 DP<br>587491  | ob38  | 359°48'40" | C         |                    | 4.14 C   |           | Class A |
| PEG 24 DP<br>587491  | PEG 25 DP<br>587491  | ob39  | 359°48'40" | C         |                    | 4.13 C   |           | Class A |
| PEG 25 DP<br>587491  | UNMK 39 DP<br>587491 | ob40  | 359°48'40" | C         |                    | 4.18 C   |           | Class A |

# Mark and Vector

Survey Number DP 587491

Meridional Circuit Mount Pleasant 2000

| From                 | To                   | Code | Bearing    | Adpt Surv | Bearing Correction | Distance | Adpt Surv | Class   |
|----------------------|----------------------|------|------------|-----------|--------------------|----------|-----------|---------|
| UNMK 39 DP<br>587491 | DISK 10 DP<br>587491 | ob97 | 359°48'40" | C         |                    | 2.00 C   |           | Class A |
| PEG 14 DP<br>587491  | UNMK 40 DP<br>587491 | ob26 | 89°48'40"  | C         |                    | 3.38 C   |           | Class A |
| UNMK 40 DP<br>587491 | UNMK 41 DP<br>587491 | ob53 | 89°48'40"  | C         |                    | 3.02 C   |           | Class A |
| UNMK 41 DP<br>587491 | UNMK 42 DP<br>587491 | ob54 | 89°48'40"  | C         |                    | 10.41 C  |           | Class A |
| UNMK 42 DP<br>587491 | PEG 22 DP<br>587491  | ob56 | 89°48'40"  | C         |                    | 1.00 C   |           | Class A |
| PEG 15 DP<br>587491  | UNMK 43 DP<br>587491 | ob28 | 89°48'40"  | C         |                    | 3.38 C   |           | Class A |
| UNMK 43 DP<br>587491 | UNMK 44 DP<br>587491 | ob57 | 89°48'40"  | C         |                    | 3.02 C   |           | Class A |
| UNMK 44 DP<br>587491 | UNMK 45 DP<br>587491 | ob59 | 89°48'40"  | C         |                    | 10.41 C  |           | Class A |
| UNMK 45 DP<br>587491 | PEG 23 DP<br>587491  | ob61 | 89°48'40"  | C         |                    | 1.00 C   |           | Class A |
| PEG 16 DP<br>587491  | UNMK 46 DP<br>587491 | ob30 | 89°48'40"  | C         |                    | 3.38 C   |           | Class A |
| UNMK 46 DP<br>587491 | UNMK 47 DP<br>587491 | ob62 | 89°48'40"  | C         |                    | 3.02 C   |           | Class A |
| UNMK 47 DP<br>587491 | UNMK 48 DP<br>587491 | ob64 | 89°48'40"  | C         |                    | 10.41 C  |           | Class A |
| UNMK 48 DP<br>587491 | PEG 24 DP<br>587491  | ob66 | 89°48'40"  | C         |                    | 1.00 C   |           | Class A |
| PEG 17 DP<br>587491  | UNMK 49 DP<br>587491 | ob32 | 89°48'40"  | C         |                    | 3.38 C   |           | Class A |
| UNMK 49 DP<br>587491 | UNMK 50 DP<br>587491 | ob48 | 89°48'40"  | C         |                    | 3.02 C   |           | Class A |
| UNMK 50 DP<br>587491 | UNMK 51 DP<br>587491 | ob50 | 89°48'40"  | C         |                    | 10.41 C  |           | Class A |
| UNMK 51 DP<br>587491 | PEG 25 DP<br>587491  | ob52 | 89°48'40"  | C         |                    | 1.00 C   |           | Class A |
| UNMK 26 DP<br>587491 | UNMK 49 DP<br>587491 | ob43 | 179°48'40" | C         |                    | 6.18 C   |           | Class A |
| UNMK 49 DP<br>587491 | UNMK 46 DP<br>587491 | ob49 | 179°48'40" | C         |                    | 4.13 C   |           | Class A |
| UNMK 46 DP<br>587491 | UNMK 43 DP<br>587491 | ob63 | 179°48'40" | C         |                    | 4.14 C   |           | Class A |
| UNMK 43 DP<br>587491 | UNMK 40 DP<br>587491 | ob58 | 179°48'40" | C         |                    | 4.13 C   |           | Class A |
| UNMK 27 DP<br>587491 | UNMK 52 DP<br>587491 | ob45 | 179°48'40" | C         |                    | 1.50 C   |           | Class A |
| UNMK 52 DP<br>587491 | UNMK 53 DP<br>587491 | ob67 | 269°48'40" | C         |                    | 3.64 C   |           | Class A |
| UNMK 53 DP<br>587491 | UNMK 54 DP<br>587491 | ob68 | 179°48'40" | C         |                    | 4.53 C   |           | Class A |

# Mark and Vector

Survey Number DP 587491

Meridional Circuit Mount Pleasant 2000

| From                 | To                   | Code | Bearing    | Adpt Surv | Bearing Correction | Distance | Adpt Surv | Class   |
|----------------------|----------------------|------|------------|-----------|--------------------|----------|-----------|---------|
| UNMK 54 DP<br>587491 | UNMK 50 DP<br>587491 | ob69 | 179°48'40" | C         |                    | 0.15 C   |           | Class A |
| UNMK 50 DP<br>587491 | UNMK 55 DP<br>587491 | ob51 | 179°48'40" | C         |                    | 0.15 C   |           | Class A |
| UNMK 55 DP<br>587491 | UNMK 56 DP<br>587491 | ob71 | 179°48'40" | C         |                    | 3.83 C   |           | Class A |
| UNMK 56 DP<br>587491 | UNMK 47 DP<br>587491 | ob73 | 179°48'40" | C         |                    | 0.15 C   |           | Class A |
| UNMK 47 DP<br>587491 | UNMK 57 DP<br>587491 | ob65 | 179°48'40" | C         |                    | 0.15 C   |           | Class A |
| UNMK 57 DP<br>587491 | UNMK 58 DP<br>587491 | ob75 | 179°48'40" | C         |                    | 3.84 C   |           | Class A |
| UNMK 58 DP<br>587491 | UNMK 44 DP<br>587491 | ob77 | 179°48'40" | C         |                    | 0.15 C   |           | Class A |
| UNMK 44 DP<br>587491 | UNMK 59 DP<br>587491 | ob60 | 179°48'40" | C         |                    | 0.15 C   |           | Class A |
| UNMK 59 DP<br>587491 | UNMK 60 DP<br>587491 | ob79 | 179°48'40" | C         |                    | 3.83 C   |           | Class A |
| UNMK 60 DP<br>587491 | UNMK 41 DP<br>587491 | ob81 | 179°48'40" | C         |                    | 0.15 C   |           | Class A |
| UNMK 54 DP<br>587491 | UNMK 61 DP<br>587491 | ob70 | 89°48'40"  | C         |                    | 10.41 C  |           | Class A |
| UNMK 61 DP<br>587491 | UNMK 51 DP<br>587491 | ob83 | 179°48'40" | C         |                    | 0.15 C   |           | Class A |
| UNMK 55 DP<br>587491 | UNMK 62 DP<br>587491 | ob72 | 89°48'40"  | C         |                    | 10.41 C  |           | Class A |
| UNMK 62 DP<br>587491 | UNMK 51 DP<br>587491 | ob84 | 359°48'40" | C         |                    | 0.15 C   |           | Class A |
| UNMK 56 DP<br>587491 | UNMK 63 DP<br>587491 | ob74 | 89°48'40"  | C         |                    | 10.41 C  |           | Class A |
| UNMK 63 DP<br>587491 | UNMK 48 DP<br>587491 | ob86 | 179°48'40" | C         |                    | 0.15 C   |           | Class A |
| UNMK 57 DP<br>587491 | UNMK 64 DP<br>587491 | ob76 | 89°48'40"  | C         |                    | 10.41 C  |           | Class A |
| UNMK 64 DP<br>587491 | UNMK 48 DP<br>587491 | ob87 | 359°48'40" | C         |                    | 0.15 C   |           | Class A |
| UNMK 58 DP<br>587491 | UNMK 65 DP<br>587491 | ob78 | 89°48'40"  | C         |                    | 10.41 C  |           | Class A |
| UNMK 65 DP<br>587491 | UNMK 45 DP<br>587491 | ob89 | 179°48'40" | C         |                    | 0.15 C   |           | Class A |
| UNMK 59 DP<br>587491 | UNMK 66 DP<br>587491 | ob80 | 89°48'40"  | C         |                    | 10.41 C  |           | Class A |
| UNMK 66 DP<br>587491 | UNMK 45 DP<br>587491 | ob90 | 359°48'40" | C         |                    | 0.15 C   |           | Class A |
| UNMK 60 DP<br>587491 | UNMK 67 DP<br>587491 | ob82 | 89°48'40"  | C         |                    | 10.41 C  |           | Class A |
| UNMK 67 DP<br>587491 | UNMK 42 DP<br>587491 | ob92 | 179°48'40" | C         |                    | 0.15 C   |           | Class A |

# Mark and Vector

Survey Number DP 587491

Meridional Circuit Mount Pleasant 2000

| From                 | To                   | Code  | Bearing    | Adpt Surv | Bearing Correction | Distance | Adpt Surv | Class   |
|----------------------|----------------------|-------|------------|-----------|--------------------|----------|-----------|---------|
| UNMK 41 DP<br>587491 | UNMK 68 DP<br>587491 | ob55  | 179°48'40" | C         |                    | 0.15 C   |           | Class A |
| UNMK 68 DP<br>587491 | UNMK 69 DP<br>587491 | ob93  | 89°48'40"  | C         |                    | 10.41 C  |           | Class A |
| UNMK 69 DP<br>587491 | UNMK 42 DP<br>587491 | ob94  | 359°48'40" | C         |                    | 0.15 C   |           | Class A |
| UNMK 28 DP<br>587491 | UNMK 70 DP<br>587491 | ob47  | 179°48'40" | C         |                    | 1.80 C   |           | Class A |
| UNMK 70 DP<br>587491 | UNMK 71 DP<br>587491 | ob98  | 89°48'40"  | C         |                    | 4.50 C   |           | Class A |
| UNMK 71 DP<br>587491 | UNMK 61 DP<br>587491 | ob99  | 179°48'40" | C         |                    | 4.22 C   |           | Class A |
| UNMK 29 DP<br>587491 | UNMK 72 DP<br>587491 | ob96  | 142°58'00" | C         |                    | 0.83 C   |           | Class A |
| UNMK 72 DP<br>587491 | UNMK 73 DP<br>587491 | ob100 | 142°58'00" | C         |                    | 1.04 C   |           | Class A |
| UNMK 73 DP<br>587491 | UNMK 39 DP<br>587491 | ob102 | 142°58'00" | C         |                    | 0.63 C   |           | Class A |
| UNMK 72 DP<br>587491 | UNMK 74 DP<br>587491 | ob101 | 179°50'00" | C         |                    | 0.83 C   |           | Class A |
| UNMK 74 DP<br>587491 | UNMK 73 DP<br>587491 | ob103 | 89°50'00"  | C         |                    | 0.62 C   |           | Class A |
| UNMK 62 DP<br>587491 | UNMK 63 DP<br>587491 | ob85  | 179°48'40" | C         |                    | 3.83 C   |           | Class A |
| UNMK 64 DP<br>587491 | UNMK 65 DP<br>587491 | ob88  | 179°48'40" | C         |                    | 3.84 C   |           | Class A |
| UNMK 66 DP<br>587491 | UNMK 67 DP<br>587491 | ob91  | 179°48'40" | C         |                    | 3.83 C   |           | Class A |
| UNMK 37 DP<br>587491 | UNMK 75 DP<br>587491 | ob105 | 359°48'40" | C         |                    | 0.95 C   |           | Class A |
| UNMK 75 DP<br>587491 | UNMK 38 DP<br>587491 | ob107 | 89°48'40"  | C         |                    | 5.10 C   |           | Class A |
| UNMK 31 DP<br>587491 | UNMK 76 DP<br>587491 | ob111 | 359°48'40" | C         |                    | 1.00 C   |           | Class A |
| UNMK 76 DP<br>587491 | UNMK 77 DP<br>587491 | ob112 | 359°48'40" | C         |                    | 2.48 C   |           | Class A |
| UNMK 77 DP<br>587491 | UNMK 78 DP<br>587491 | ob114 | 359°48'40" | C         |                    | 0.90 C   |           | Class A |
| UNMK 78 DP<br>587491 | UNMK 79 DP<br>587491 | ob126 | 359°48'40" | C         |                    | 1.59 C   |           | Class A |
| UNMK 79 DP<br>587491 | UNMK 80 DP<br>587491 | ob116 | 359°48'40" | C         |                    | 2.48 C   |           | Class A |
| UNMK 80 DP<br>587491 | PEG 20 DP<br>587491  | ob118 | 89°48'40"  | C         |                    | 1.95 C   |           | Class A |
| UNMK 76 DP<br>587491 | UNMK 81 DP<br>587491 | ob113 | 89°49'40"  | C         |                    | 5.00 C   |           | Class A |
| UNMK 81 DP<br>587491 | UNMK 82 DP<br>587491 | ob120 | 359°48'40" | C         |                    | 2.48 C   |           | Class A |

# Mark and Vector

Survey Number DP 587491

Meridional Circuit Mount Pleasant 2000

| From                 | To                   | Code  | Bearing    | Adpt Surv | Bearing Correction | Distance | Adpt Surv | Class   |
|----------------------|----------------------|-------|------------|-----------|--------------------|----------|-----------|---------|
| UNMK 82 DP<br>587491 | UNMK 83 DP<br>587491 | ob121 | 359°48'40" | C         |                    | 2.49 C   |           | Class A |
| UNMK 83 DP<br>587491 | UNMK 36 DP<br>587491 | ob122 | 359°48'40" | C         |                    | 2.48 C   |           | Class A |
| UNMK 79 DP<br>587491 | UNMK 83 DP<br>587491 | ob117 | 89°48'40"  | C         |                    | 5.00 C   |           | Class A |
| UNMK 77 DP<br>587491 | UNMK 82 DP<br>587491 | ob115 | 89°48'40"  | C         |                    | 5.00 C   |           | Class A |
| UNMK 30 DP<br>587491 | UNMK 78 DP<br>587491 | ob109 | 89°48'40"  | C         |                    | 3.00 C   |           | Class A |
| UNMK 32 DP<br>587491 | UNMK 84 DP<br>587491 | ob124 | 359°48'40" | C         |                    | 5.00 C   |           | Class A |
| UNMK 84 DP<br>587491 | UNMK 33 DP<br>587491 | ob125 | 89°48'40"  | C         |                    | 2.80 C   |           | Class A |
| PEG 25 DP<br>587491  | UNMK 35 DP<br>587491 | ob41  | 89°48'40"  | C         |                    | 3.40 C   |           | Class A |
| MN 2 DP 587491       | PEG D DP<br>405827   | ob132 | 261°44'00" | M         |                    | 21.17 M  |           |         |
| MN 2 DP 587491       | PEG 17 DP<br>587491  | ob133 | 246°13'00" | M         |                    | 22.88 M  |           |         |
| MN 2 DP 587491       | PEG 16 DP<br>587491  | ob134 | 237°26'00" | M         |                    | 24.82 M  |           |         |
| MN 2 DP 587491       | PEG 15 DP<br>587491  | ob135 | 230°04'00" | M         |                    | 27.27 M  |           |         |
| MN 2 DP 587491       | PEG 14 DP<br>587491  | ob136 | 224°01'00" | M         |                    | 30.08 M  |           |         |
| MN 2 DP 587491       | PEG 13 DP<br>587491  | ob137 | 218°42'00" | M         |                    | 33.40 M  |           |         |
| MN 2 DP 587491       | DISK 12 DP<br>587491 | ob138 | 210°36'30" | M         |                    | 40.98 M  |           |         |
| MN 2 DP 587491       | PEG 19 DP<br>587491  | ob139 | 211°28'00" | M         |                    | 30.54 M  |           |         |
| MN 2 DP 587491       | PEG 20 DP<br>587491  | ob140 | 210°45'00" | M         |                    | 31.17 M  |           |         |
| MN 2 DP 587491       | PEG 21 DP<br>587491  | ob141 | 186°33'00" | M         |                    | 26.92 M  |           |         |
| MN 2 DP 587491       | PEG 22 DP<br>587491  | ob142 | 188°09'00" | M         |                    | 21.78 M  |           |         |
| MN 2 DP 587491       | PEG 23 DP<br>587491  | ob143 | 190°05'00" | M         |                    | 17.71 M  |           |         |
| MN 2 DP 587491       | PEG 24 DP<br>587491  | ob144 | 193°11'00" | M         |                    | 13.65 M  |           |         |
| MN 2 DP 587491       | PEG 25 DP<br>587491  | ob145 | 198°49'00" | M         |                    | 9.68 M   |           |         |
| MN 2 DP 587491       | DISK 10 DP<br>587491 | ob146 | 226°27'00" | M         |                    | 4.34 M   |           |         |
| MN 2 DP 587491       | DISK 11 DP<br>587491 | ob147 | 175°04'00" | M         |                    | 2.99 M   |           |         |



# Mark and Vector

Survey Number DP 587491

Meridional Circuit Mount Pleasant 2000

| From            | To                | Code  | Bearing    | Adpt Surv | Bearing Correction | Distance | Adpt Surv | Class   |
|-----------------|-------------------|-------|------------|-----------|--------------------|----------|-----------|---------|
| MN 2 DP 587491  | DISK 18 DP 587491 | ob148 | 179°25'30" | M         |                    | 35.08 M  |           |         |
| IR I DP 427906  | IT I DP 35338     | ob4   | 269°48'40" | M         |                    | 36.34 M  |           |         |
| MN 2 DP 587491  | PEG I DP 405827   | ob130 | 224°08'00" | M         |                    | 30.02 M  |           |         |
| PEG I DP 405827 | PEG 15 DP 587491  | ob150 | 359°48'40" | C         |                    | 4.04 C   |           | Class A |

| Mark Name           | Mark Condition | Description           |
|---------------------|----------------|-----------------------|
| DISK 10 DP 587491   |                | in conc strip         |
| DISK 11 DP 587491   |                | in conc strip         |
| DISK 12 DP 587491   |                | in rail               |
| IR I DP 404675      |                | d 0.05 in carriageway |
| IR I DP 427906      |                | fl                    |
| IR III DP 405827    |                | fl                    |
| IR V DP 409768      |                | fl                    |
| IT I DP 35338       |                | fl                    |
| IT NO REC. DP 81302 |                | fl                    |
| MA V DP 427906      |                | on kerb               |
| MN 2 DP 587491      |                | Nail in kerb          |
| Nail 1 DP 587491    |                | Nail in seal          |

\*\*\* End of Report \*\*\*

# Schedule / Memorandum

Land Registration District

**Canterbury**

Survey Number

**LT 587491**

Territorial Authority (the Council)

**Christchurch City**

## Memorandum of Easements

Last Edited: 08 Mar 2023 08:16:22

| <u>Purpose</u>  | <u>Shown</u> | <u>Burdened Land</u><br>(Servient Tenement) | <u>Benefited Land</u><br>(Dominant Tenement) |
|---|--------------|---|--|
| Party wall  | A            | Lot 1                                       | Lot 2  |
|   | B            | Lot 2                                       | Lot 1  |
|   | C            | Lot 2                                       | Lot 3  |
|   | D            | Lot 3                                       | Lot 2  |
|   | E            | Lot 3                                       | Lot 4  |
|   | F            | Lot 4                                       | Lot 3  |
|   | G            | Lot 4                                       | Lot 5  |
|   | H            | Lot 5                                       | Lot 4  |
| Right to drain water  | A            | Lot 1                                       | Lot 2  |
|   | B            | Lot 2                                       | Lot 1  |
|   | C            | Lot 2                                       | Lot 3  |
|   | D            | Lot 3                                       | Lot 2  |
|   | E            | Lot 3                                       | Lot 4  |
|   | F            | Lot 4                                       | Lot 3  |
|   | G            | Lot 4                                       | Lot 5  |
|   | H            | Lot 5                                       | Lot 4  |
|   | I, J, K, L   | Lot 1                                       | Lot 2, Lot 3, Lot 4, Lot 5                   |
|   | M, N         | Lot 2                                       | Lot 3, Lot 4, Lot 5                          |
|   | O, P         | Lot 3                                       | Lot 4, Lot 5                                 |
| Q, R  | Lot 4        | Lot 5                                       |  |
| Right to convey water   | K, L         | Lot 1                                       | Lot 2, Lot 3, Lot 4, Lot 5                   |
| Right of Way  | T            | Lot 6                                       | Lot 1  |
|   | S            | Lot 5                                       | Lot 2, Lot 3, Lot 4, Lot 6                   |
| Right to convey water,<br>electricity, telecommunications<br>and computer media | T            | Lot 6                                       | Lot 1  |
| Right to convey electricity,<br>telecommunications and<br>computer media        | U            | Lot 6                                       | Lot 2, Lot 3, Lot 4, Lot 5                   |
| Right to convey electricity   | J, K, L      | Lot 1                                       | Lot 2, Lot 3, Lot 4, Lot 5, Lot 6            |

## Amalgamation Conditions

Last Edited: 01 Feb 2023 14:50:49

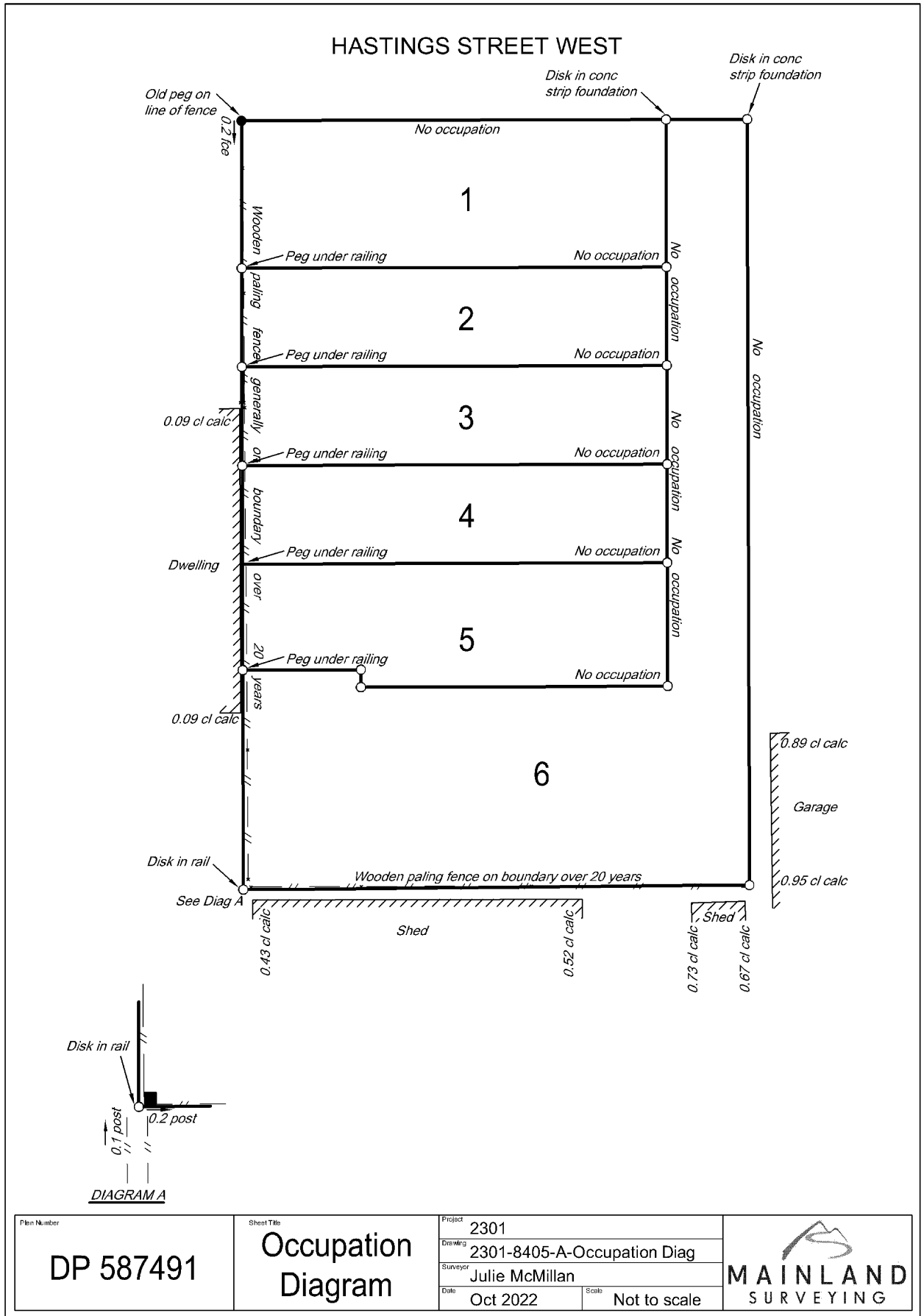
That Lot 6 DP 587491 (legal access) be held as to four undivided one-fourth shares by the owners of Lots 2-5 DP 587491 as tenants in common in the said shares and that individual Record of Titles be issued in accordance therewith. LINZ Request No 1830113

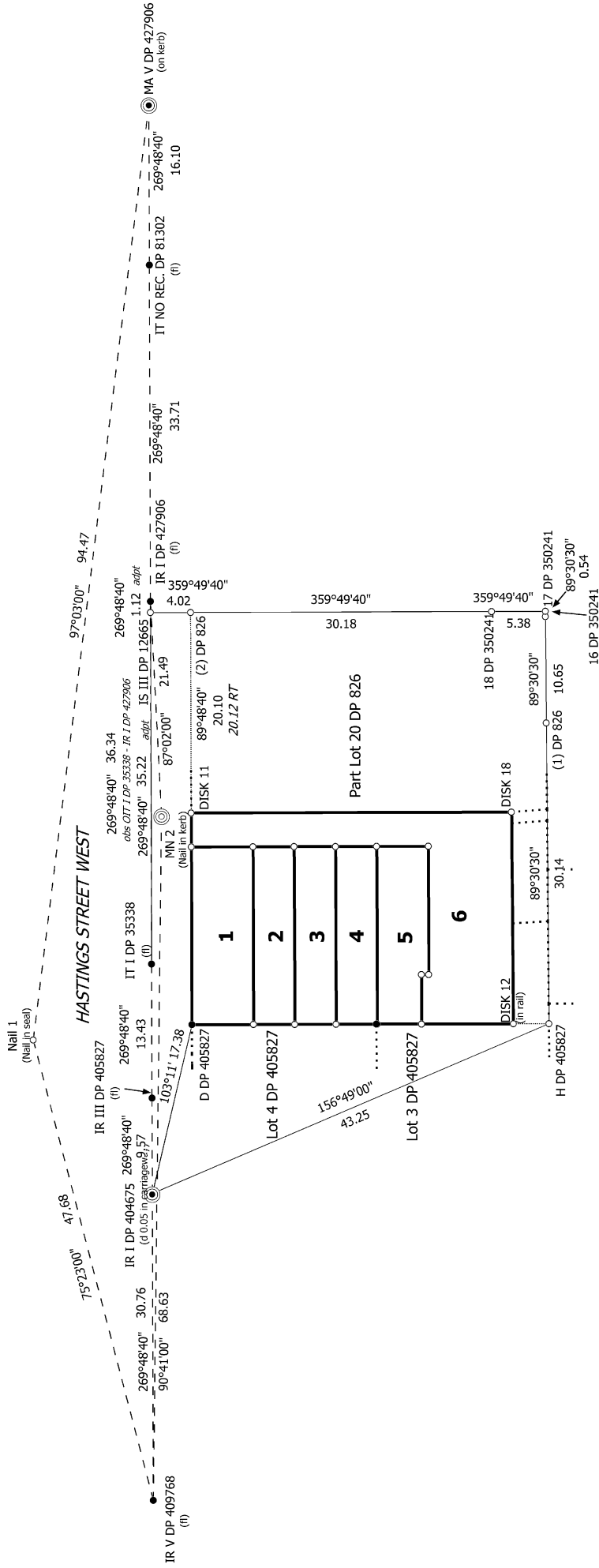
## Notes

Last Edited: 20 Feb 2023 12:31:30

Area K is subject to a proposed consent notice.  
Areas V, W, X, Y, & Z are subject to proposed land covenants.

# Occupation Diagram





S 1/2

2301 Hastings St West

Land District: Canterbury

**Digitally Generated Plan**

Generated on: 17/08/2023 1:29pm Page 12 of 16

Lots 1-6 being subdivision of Pt Lot 18, Pt Lot 19 & Pt Lot 20 DP 826

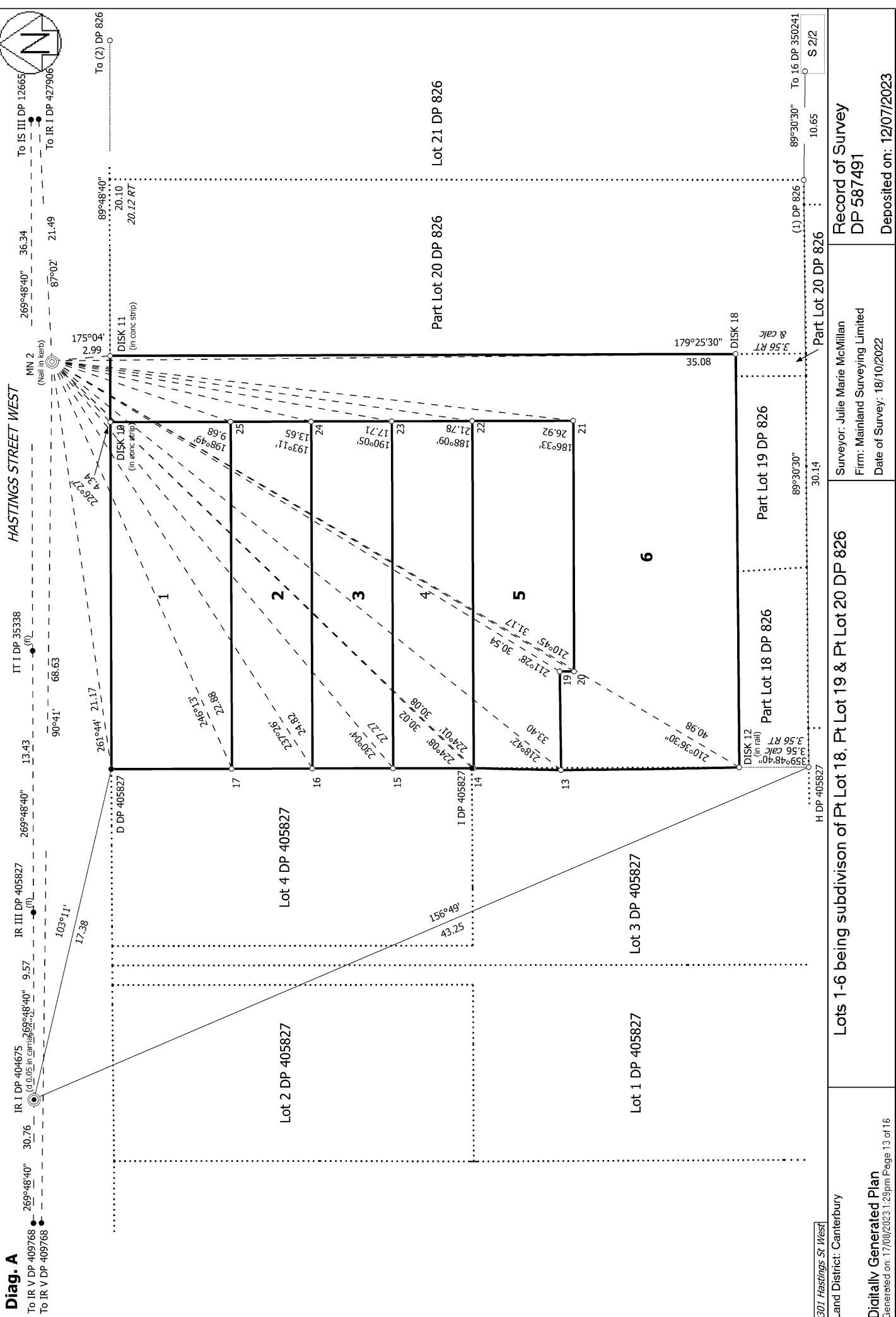
Surveyor: Julie Marie McMillan  
 Firm: Mainland Surveying Limited  
 Date of Survey: 18/10/2022

Record of Survey  
 DP 587491

Deposited on: 12/07/2023

**Diag. A**

2301 Hastings St West



Land District: Canterbury

Lots 1-6 being subdivision of Pt Lot 18, Pt Lot 19 & Pt Lot 20 DP 826

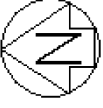
Surveyor: Julie Marie McMillan  
Firm: Mainland Surveying Limited  
Date of Survey: 18/10/2022

Record of Survey  
DP 587491

**Digitally Generated Plan**

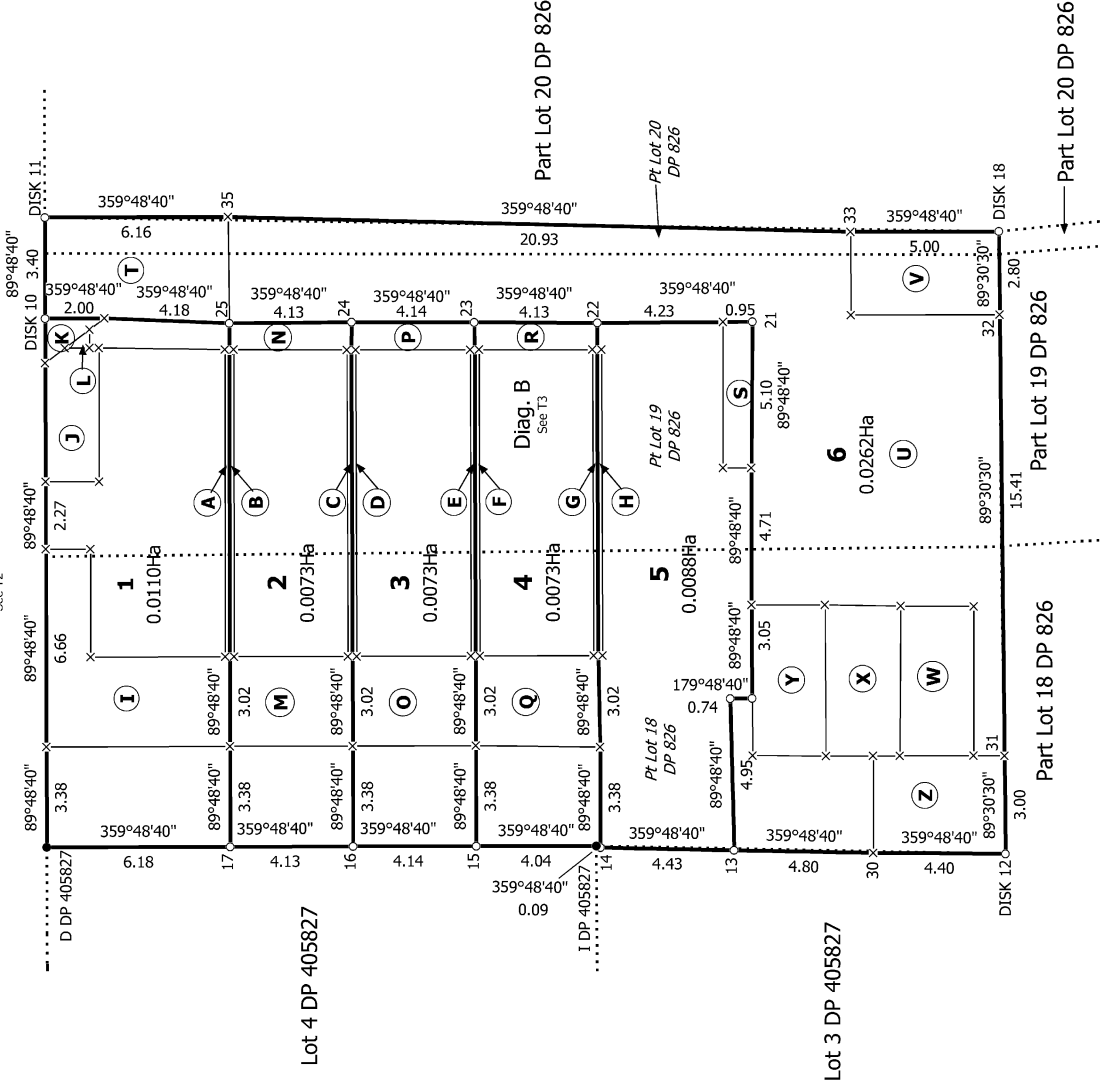
Generated on: 17/08/2023 1:29pm Page 13 of 16

Deposited on: 12/07/2023



HASTINGS STREET WEST

Diag. A  
See T2



Lot 4 DP 405827

Lot 3 DP 405827

Lot 13 DP 3658

Lot 14 DP 3658

Lot 15 DP 3658

T 1/3

2301 Hastings St West  
Land District: Canterbury

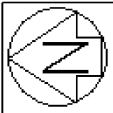
Lots 1-6 being subdivision of Pt Lot 18, Pt Lot 19 & Pt Lot 20 DP 826

Record of Survey  
DP 587491

Digitally Generated Plan  
Generated on: 17/08/2023 1:29pm Page 14 of 16

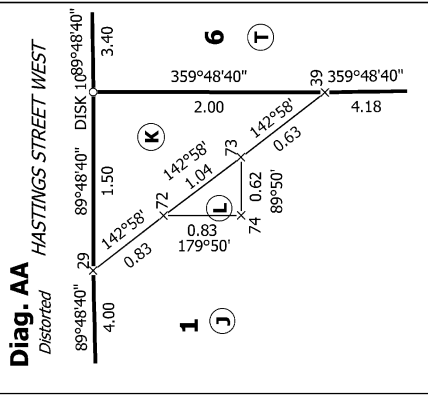
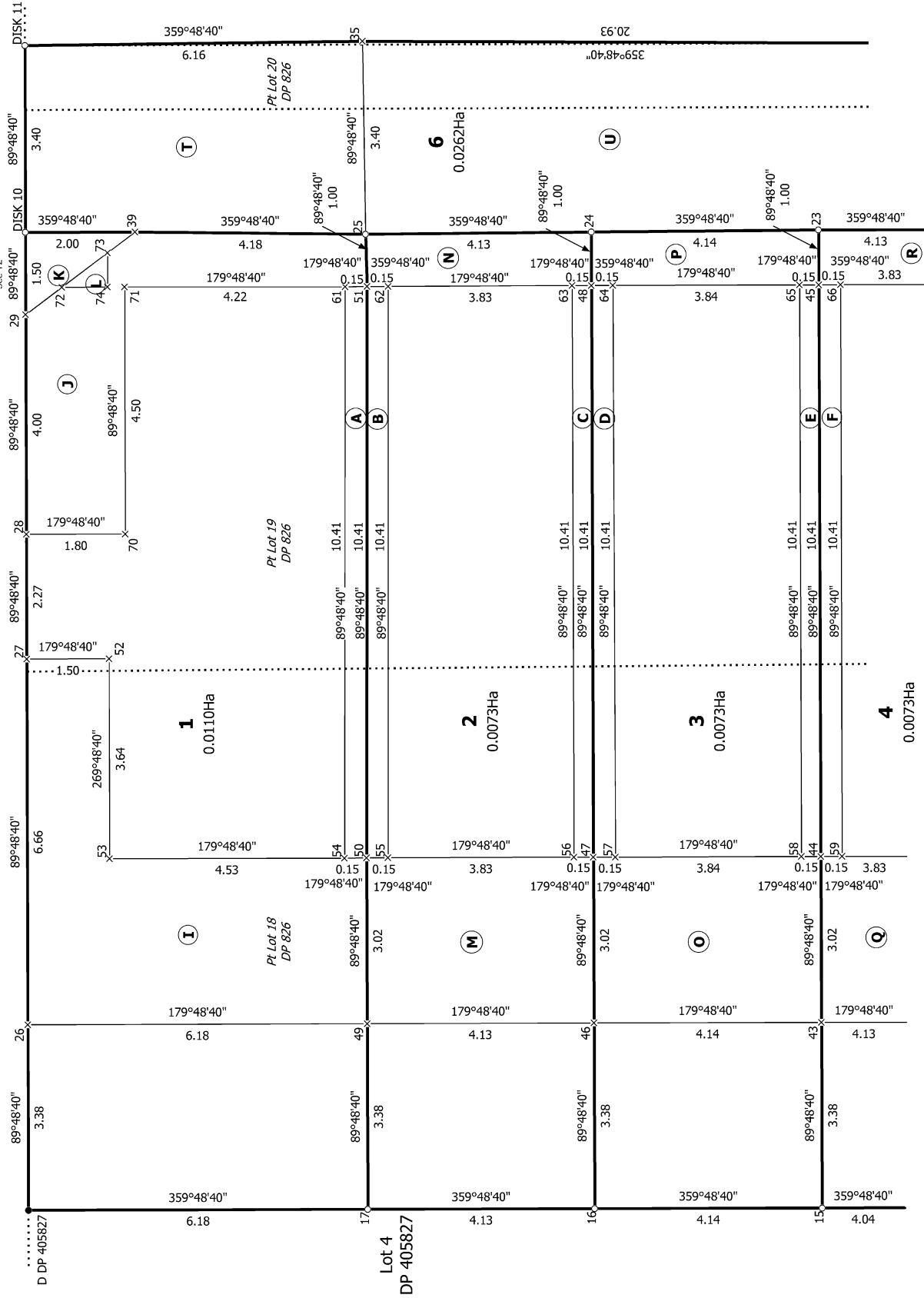
Surveyor: Julie Marie McMillan  
Firm: Mainland Surveying Limited  
Date of Survey: 18/10/2022

Deposited on: 12/07/2023



**Diag. A**  
*Distorted*

HASTINGS STREET WEST



Part Lot 20 DP 826

T 2/3

Land District: Canterbury

Lots 1-6 being subdivision of Pt Lot 18, Pt Lot 19 & Pt Lot 20 DP 826

Surveyor: Julie Marie McMillan  
Firm: Mainland Surveying Limited  
Date of Survey: 18/10/2022

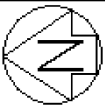
Record of Survey  
DP 587491

Deposited on: 12/07/2023

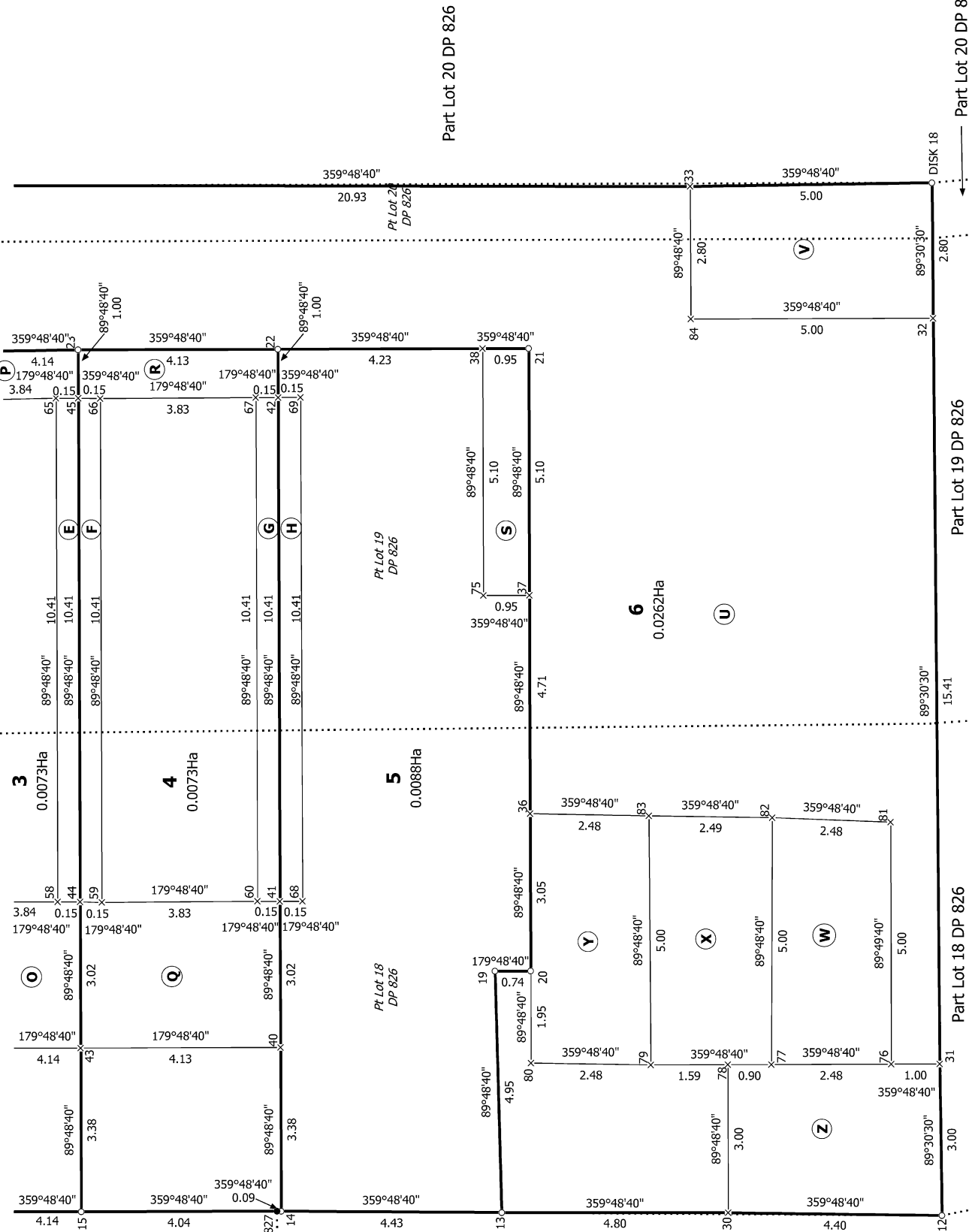
**Digitally Generated Plan**

Generated on: 17/08/2023 1:29pm Page 15 of 16

2301 Hastings St West



**Diag. B**  
*Distorted*



Lot 4 DP 405827

Lot 3 DP 405827

Part Lot 18 DP 826

Part Lot 19 DP 826

Part Lot 20 DP 826

T 3/3

2301 Hastings St West

Land District: Canterbury

Lots 1-6 being subdivision of Pt Lot 18, Pt Lot 19 & Pt Lot 20 DP 826

Surveyor: Julie Marie McMillan

Firm: Mainland Surveying Limited

Date of Survey: 18/10/2022

Record of Survey  
DP 587491

Deposited on: 12/07/2023

Digitally Generated Plan

Generated on: 17/08/2023 1:29pm Page 16 of 16