

# Record of Survey - DP 586433

<b>Survey Number</b>	DP 586433
<b>Surveyor Reference</b>	15430 Tainui Investments Nikau Bay (LM)
<b>Surveyor</b>	Matthew William Straker
<b>Survey Firm</b>	Ayson and Partners
<b>Surveyor Declaration</b>	I Matthew William Straker, being a licensed cadastral surveyor, certify that-- (a) this dataset provided by me and its related survey are accurate, correct and in accordance with the Cadastral Survey Act 2002 and Cadastral Survey Rules 2021; and (b) the survey was undertaken by me or under my personal direction. Declared on 06 Jul 2023 04:55 PM

## Survey Details

<b>Dataset Description</b>	LOTS 1 AND 2 BEING A SUBDIVISION OF PART SECTION 9 BLOCK III ORIERI SD		
<b>Purpose</b>	LT Subdivision		
<b>Status</b>	Deposited	<b>Type</b>	Survey
<b>Land District</b>	Marlborough	<b>Survey Class</b>	Class B
<b>Meridional Circuit</b>	Marlborough 2000	<b>Vertical Datum</b>	None

## Survey Dates

<b>Surveyed Date</b>	16/12/2022	<b>Certified Date</b>	06/07/2023
<b>Submitted Date</b>	06/07/2023 16:55:52	<b>Survey Approval Date</b>	11/07/2023
<b>Deposit Date</b>	15/08/2023		

## Referenced Surveys

Survey Number	Land District	Bearing Correction
DP 525706	Marlborough	0°00'00"
DP 6828	Marlborough	0°00'40"
DP 7308	Marlborough	0°00'00"
SO 53	Marlborough	0°00'00"
DP 7997	Marlborough	0°00'40"
SO 208	Marlborough	0°00'00"
DP 3214	Marlborough	0°00'00"
DP 345890	Marlborough	0°00'00"
DP 432035	Marlborough	0°00'00"

## Territorial Authorities

Marlborough District

## Comprised In

RT MB4C/236

## Created Parcels

Parcels	Parcel Intent	Area	RT Reference
Lot 1 Deposited Plan 586433	Fee Simple Title	40.5196 Ha	1109472
Lot 2 Deposited Plan 586433	Fee Simple Title	79.0310 Ha	1109473
<b>Total Area</b>		119.5506 Ha	

# Mark and Vector

Survey Number DP 586433

Meridional Circuit Marlborough 2000

From	To	Code	Bearing	Adpt Surv	Bearing Correction	Distance	Adpt Surv	Class
IT 1 LITTLE NIKAU BAY	IT 2 DP 586433	ob98	77°33'22" M			653.34 M		
IT 2 DP 586433	IT 3 DP 586433	ob46	304°50'30" M			71.45 M		
IT 3 DP 586433	IT 1 LITTLE NIKAU BAY	ob47	252°35'50" M			607.16 M		
IT 1 LITTLE NIKAU BAY	IT III DP 3214	ob99	25°15'00" M			21.83 M		
IT III DP 3214	IS II DP 3214	ob107	155°37'30" M			98.49 M		
IS II DP 3214	IT 1 LITTLE NIKAU BAY	ob109	324°28'30" M			85.97 M		
IT 1 LITTLE NIKAU BAY	IT 4 DP 586433	ob100	335°58'55" M			374.65 M		
IT 4 DP 586433	IT 5 DP 586433	ob49	39°05'20" M			53.47 M		
IT 5 DP 586433	IT 1 LITTLE NIKAU BAY	ob52	162°47'53" M			401.66 M		
IT 1 LITTLE NIKAU BAY	IT 20 DP 586433	ob101	310°45'03" M			439.10 M		
IT 20 DP 586433	IT 4 DP 586433	ob96	72°51'20" M			188.53 M		
IT 1 LITTLE NIKAU BAY	IT V DP 2679	ob102	32°39'58" M			1,427.92 M		
IT V DP 2679	IT 4 DP 586433	ob89	227°02'04" M			1,261.61 M		
IT 1 LITTLE NIKAU BAY	IS IV DP 7997	ob103	39°55'40" M			1,047.12 M		
IS IV DP 7997	IT 4 DP 586433	ob86	240°48'09" M			944.57 M		
IT 1 LITTLE NIKAU BAY	NAIL II DP 525706	ob104	15°01'31" M			1,785.40 M		
NAIL II DP 525706	IT V DP 2679	ob94	149°29'02" M			606.27 M		
IT 1 LITTLE NIKAU BAY	IT IX DP 5394	ob105	15°37'07" M			1,886.20 M		
IT IX DP 5394	IT V DP 2679	ob93	156°50'20" M			668.36 M		
IT 1 LITTLE NIKAU BAY	IS X DP 5394	ob106	23°03'44" M			1,944.51 M		
IS X DP 5394	ST IA SO 53	ob95	142°33'20" A	DP 525706	0°00'00"	133.34 A	DP 525706	
IT 3 DP 586433	IT 6 DP 586433	ob48	299°33'30" M			77.14 M		
IT 6 DP 586433	IT 7 DP 586433	ob54	273°37'20" M			81.25 M		
IT 7 DP 586433	IT 8 DP 586433	ob56	303°48'20" M			46.73 M		
IT 8 DP 586433	IT 9 DP 586433	ob58	312°10'30" M			40.42 M		
IT 9 DP 586433	IT 10 DP 586433	ob59	271°41'10" M			73.94 M		
IT 10 DP 586433	IT 11 DP 586433	ob61	255°27'00" M			50.69 M		
IT 11 DP 586433	IT 12 DP 586433	ob63	280°29'00" M			50.14 M		
IT 12 DP 586433	IT 13 DP 586433	ob64	300°41'00" M			36.68 M		
IT 13 DP 586433	IT 14 DP 586433	ob66	292°14'00" M			20.34 M		
IT 14 DP 586433	IT 15 DP 586433	ob71	294°27'00" M			41.68 M		
IT 15 DP 586433	IT 16 DP 586433	ob72	306°15'00" M			33.62 M		

# Mark and Vector

Survey Number DP 586433

Meridional Circuit Marlborough 2000

From	To	Code	Bearing	Adpt Surv	Bearing Correction	Distance	Adpt Surv	Class
IT 16 DP 586433	IT 17 DP 586433	ob74	266°10'00"	M		39.73 M		
IT 17 DP 586433	IT 18 DP 586433	ob75	259°54'40"	M		64.72 M		
IT 18 DP 586433	IT 19 DP 586433	ob76	289°15'20"	M		85.34 M		
IT 19 DP 586433	IT 4 DP 586433	ob78	254°30'40"	M		44.90 M		
IT 4 DP 586433	IT 21 DP 586433	ob50	228°51'15"	M		67.50 M		
IT 21 DP 586433	IT 22 DP 586433	ob53	45°28'30"	M		29.41 M		
IT 22 DP 586433	IT 4 DP 586433	ob81	51°27'00"	M		38.17 M		
IT 19 DP 586433	IT 5 DP 586433	ob79	342°04'40"	M		31.01 M		
IT VIII DP 6828	IT V DP 6828	ob112	11°11'50"	A DP 6828	0°00'40"	55.11 A DP 6828		
IT V DP 6828	IT III DP 6828	ob113	351°40'50"	A DP 6828	0°00'40"	86.72 A DP 6828		
IT III DP 6828	IT I DP 6828	ob114	34°52'40"	A DP 6828	0°00'40"	92.25 A DP 6828		
IT I DP 6828	IT V DP 2679	ob115	41°25'40"	A DP 6828	0°00'40"	92.43 A DP 6828		
IS IV DP 7997	IT III DP 7997	ob87	217°44'30"	A DP 7997	0°00'40"	87.78 A DP 7997		
IT III DP 7997	IT II DP 7997	ob0	304°28'00"	A DP 7997	0°00'40"	35.00 A DP 7997		
IT II DP 7997	IS I DP 7997	ob2	14°05'30"	A DP 7997	0°00'40"	105.13 A DP 7997		
IS I DP 7997	IT VIII DP 6828	ob3	35°08'20"	A DP 7997	0°00'40"	75.67 A DP 7997		
ST IA SO 53	Trig M	ob91	174°42'00"	A SO 208	0°00'00"	1,816.91 A SO 208		
Trig M	JJ (Oriari SD & Linkwater SD)	ob4	294°44'00"	A SO 208	0°00'00"	3,366.61 A SO 208		
JJ (Oriari SD & Linkwater SD)	ST IA SO 53	ob5	82°06'30"	A SO 208	0°00'00"	2,917.56 A SO 208		
JJ (Oriari SD & Linkwater SD)	VII SO 208	ob6	124°52'00"	A SO 208	0°00'00"	2,048.92 A SO 208		
VII SO 208	HH (Linkwater SD)	ob7	232°26'00"	A SO 208	0°00'00"	1,646.12 A SO 208		
HH (Linkwater SD)	JJ (Oriari SD & Linkwater SD)	ob39	350°11'19"	A SO 208	0°00'00"	2,207.24 A SO 208		
VII SO 208	VIII SO 208	ob8	104°44'00"	A SO 208	0°00'00"	149.27 A SO 208		
VIII SO 208	IX SO 208	ob10	90°55'00"	A SO 208	0°00'00"	103.02 A SO 208		
IX SO 208	X SO 208	ob11	75°51'00"	A SO 208	0°00'00"	98.61 A SO 208		
X SO 208	XI SO 208	ob12	170°30'00"	A SO 208	0°00'00"	84.79 A SO 208		
XI SO 208	XII SO 208	ob13	141°40'00"	A SO 208	0°00'00"	140.56 A SO 208		
XII SO 208	XIII SO 208	ob14	174°22'00"	A SO 208	0°00'00"	154.52 A SO 208		
XIII SO 208	XIV SO 208	ob15	166°42'00"	A SO 208	0°00'00"	125.89 A SO 208		
XIV SO 208	XV SO 208	ob16	157°48'00"	A SO 208	0°00'00"	163.59 A SO 208		
XV SO 208	HH (Linkwater SD)	ob40	258°49'00"	A SO 208	0°00'00"	1,890.70 A SO 208		
VII SO 208	VI SO 208	ob9	341°16'00"	A SO 208	0°00'00"	79.64 A SO 208		
VI SO 208	V SO 208	ob17	15°03'00"	A SO 208	0°00'00"	217.28 A SO 208		
V SO 208	IV SO 208	ob18	41°01'00"	A SO 208	0°00'00"	235.73 A SO 208		
IV SO 208	III SO 208	ob19	85°40'00"	A SO 208	0°00'00"	393.61 A SO 208		
III SO 208	II SO 208	ob20	59°23'00"	A SO 208	0°00'00"	87.43 A SO 208		
II SO 208	I SO 208	ob21	72°41'00"	A SO 208	0°00'00"	260.31 A SO 208		
I SO 208	6a SO 53	ob22	29°38'00"	A SO 208	0°00'00"	70.13 A SO 208		

# Mark and Vector

Survey Number DP 586433

Meridional Circuit Marlborough 2000

From	To	Code	Bearing	Adpt Surv	Bearing Correction	Distance	Adpt Surv	Class
6a SO 53	PEG (1) DP 7997	ob23	140°06'00"	A SO 208	0°00'00"	27.76 A	SO 208	
PEG (1) DP 7997	IT II DP 7997	ob24	174°18'40"	A DP 7997	0°00'40"	13.03 A	DP 7997	
IT III DP 7997	PEG (2) DP 7997	ob1	292°17'40"	A DP 7997	0°00'40"	4.52 A	DP 7997	
PEG (1) DP 7997	PEG (2) DP 7997	ob25	140°06'00"	A SO 53	0°00'00"	40.49 A	DP 7997	Class B
PEG (2) DP 7997	UNMK 5 DP 345890	ob27	140°06'00"	A SO 53	0°00'00"	0.90 A	DP 345890	Class B
UNMK 5 DP 345890	UNMK 6 DP 345890	ob29	140°06'00"	A SO 53	0°00'00"	2.03 A	DP 345890	Class B
UNMK 6 DP 345890	IP 13 SO 53	ob30	140°06'00"	A SO 53	0°00'00"	469.56 A	DP 345890	Class B
IP 13 SO 53	PEG 6 DP 432035	ob31	50°06'00"	A SO 53	0°00'00"	82.05 A	DP 432035	Class B
PEG 6 DP 432035	IP 12 SO 53	ob28	50°06'00"	A SO 53	0°00'00"	420.87 A	DP 432035	Class B
IP 12 SO 53	IP 12a SO 208	ob32	140°06'00"	A SO 208	0°00'00"	402.34 A	SO 208	Class B
IP 12a SO 208	IP XIIIa SO 208	ob33	212°25'00"	A SO 208	0°00'00"	627.48 A	SO 208	Class B
IP XIIIa SO 208	XIVa SO 208	ob34	264°31'30"	A SO 208	0°00'00"	211.37 A	SO 208	Class B
XIVa SO 208	Trig M	ob35	354°31'00"	A SO 208	0°00'00"	37.84 A	SO 208	
IT III DP 3214	IT IV DP 3214	ob108	13°31'10"	A DP 7308	0°00'00"	63.26 A	DP 7308	
IT IV DP 3214	IT V DP 3214	ob116	336°33'10"	A DP 3214	0°00'00"	178.98 A	DP 3214	
IT V DP 3214	II (Oriari SD)	ob119	285°47'20"	A DP 3214	0°00'00"	167.29 A	DP 3214	
II (Oriari SD)	IT 21 DP 586433	ob129	34°18'00"	M		8.28 M		
IS II DP 3214	PEG (1) DP 3214	ob110	77°56'10"	A DP 3214	0°00'00"	37.22 A	DP 3214	
PEG (1) DP 3214	IT X DP 3214	ob120	77°56'10"	A DP 3214	0°00'00"	9.89 A	DP 3214	
IT X DP 3214	IT IX DP 3214	ob122	84°35'20"	A DP 3214	0°00'00"	69.72 A	DP 3214	
IT IX DP 3214	IT VIII DP 3214	ob123	318°09'50"	A DP 3214	0°00'00"	130.86 A	DP 3214	
IT VIII DP 3214	IT VII DP 3214	ob125	316°25'10"	A DP 7308	0°00'00"	58.89 A	DP 7308	
IT VII DP 3214	IT VI DP 3214	ob127	340°24'40"	A DP 3214	0°00'00"	225.22 A	DP 3214	
IT VI DP 3214	II (Oriari SD)	ob128	267°21'30"	A DP 3214	0°00'00"	170.37 A	DP 3214	
XIVa SO 208	IP (1) SO 208	ob36	264°31'30"	A SO 208	0°00'00"	900.19 A	SO 208	Class B
IP (1) SO 208	XIII SO 208	ob38	264°31'30"	A SO 208	0°00'00"	25.13 A	SO 208	
IT 6 DP 586433	PEG 6A DP 586433	ob55	115°46'00"	M		30.82 M		
IT 7 DP 586433	PEG 7A DP 586433	ob57	107°38'00"	M		15.45 M		
IT 9 DP 586433	PEG 9A DP 586433	ob60	107°19'00"	M		5.39 M		
IT 10 DP 586433	PEG 10A DP 586433	ob62	73°26'00"	M		2.56 M		
IT 12 DP 586433	PEG 12A DP 586433	ob65	105°27'00"	M		8.26 M		
IT 15 DP 586433	PEG 15A DP 586433	ob73	274°15'00"	M		6.80 M		
IT 18 DP 586433	PEG 18A DP 586433	ob77	175°10'00"	M		2.06 M		

# Mark and Vector

Survey Number DP 586433

Meridional Circuit Marlborough 2000

From	To	Code	Bearing	Adpt Surv	Bearing Correction	Distance	Adpt Surv	Class
IT 4 DP 586433	PEG 4A DP 586433	ob51	94°17'00"	M		14.32 M		
IT 20 DP 586433	PEG 20A DP 586433	ob97	51°03'00"	M		17.81 M		
IT VIII DP 3214	PEG (1) DP 7308	ob126	66°35'30"	A DP 7308	0°00'00"	15.77 A DP 7308		
IT IV DP 3214	PEG (3) DP 7308	ob117	329°35'00"	A DP 7308	0°00'00"	55.74 A DP 7308		
IT IV DP 3214	PEG (2) DP 7308	ob118	311°28'00"	A DP 7308	0°00'00"	47.40 A DP 7308		
IT IX DP 3214	IT (2) DP 3214	ob124	144°56'20"	A DP 3214	0°00'00"	3.72 A DP 3214		Class B
PEG (2) DP 7308	PEG (3) DP 7308	ob43	23°37'00"	A DP 7308	0°00'00"	18.19 A DP 7308		Class B
PEG (3) DP 7308	PEG (1) DP 7308	ob42	129°15'10"	A DP 7308	0°00'00"	124.97 A DP 7308		Class B
PEG (1) DP 7308	IT IX DP 3214	ob41	144°56'20"	A DP 3214	0°00'00"	126.77 A DP 3214		Class B
IT (2) DP 3214	PEG (1) DP 3214	ob45	266°03'00"	A DP 3214	0°00'00"	81.42 A DP 3214		Class B
PEG (2) DP 7308	UNMK (4) DP 7308	ob44	203°37'00"	A DP 7308	0°00'00"	1.50 A DP 7308		Class B
XIVa SO 208	PEG 6A DP 586433	ob37	307°57'00"	C		601.41 C		Class B
PEG 6A DP 586433	PEG 7A DP 586433	ob82	278°22'20"	C		95.13 C		Class B
PEG 7A DP 586433	PEG 9A DP 586433	ob67	305°39'00"	C		96.44 C		Class B
PEG 9A DP 586433	PEG 10A DP 586433	ob68	273°22'00"	C		76.73 C		Class B
PEG 10A DP 586433	PEG 12A DP 586433	ob69	265°58'00"	C		93.09 C		Class B
PEG 12A DP 586433	PEG 15A DP 586433	ob70	294°13'40"	C		113.01 C		Class B
PEG 15A DP 586433	PEG 18A DP 586433	ob83	271°32'50"	C		123.56 C		Class B
PEG 18A DP 586433	PEG 4A DP 586433	ob84	278°52'40"	C		111.06 C		Class B
PEG 4A DP 586433	PEG 20A DP 586433	ob85	256°30'50"	C		185.70 C		Class B
II (Orieri SD)	JJ (Orieri SD & Linkwater SD)	ob130	298°19'00"	A SO 208	0°00'00"	2,090.28 A SO 208		
PEG (1) DP 7997	UNMK 25 DP 586433	ob26	179°44'00"	C		11.76 C		Class B
UNMK 25 DP 586433	UNMK 26 DP 586433	ob131	198°00'00"	C		21.25 C		Class B
UNMK 26 DP 586433	UNMK 27 DP 586433	ob132	228°19'00"	C		27.48 C		Class B
UNMK 27 DP 586433	UNMK 28 DP 586433	ob133	240°20'00"	C		39.44 C		Class B
UNMK 28 DP 586433	UNMK 29 DP 586433	ob134	254°44'30"	C		81.82 C		Class B
UNMK 29 DP 586433	UNMK 30 DP 586433	ob135	249°05'30"	C		80.84 C		Class B

# Mark and Vector

Survey Number DP 586433

Meridional Circuit Marlborough 2000

From	To	Code	Bearing	Adpt Surv	Bearing Correction	Distance	Adpt Surv	Class
UNMK 30 DP 586433	UNMK 31 DP 586433	ob136	256°33'30"	C		71.01 C		Class B
UNMK 31 DP 586433	UNMK 32 DP 586433	ob137	240°23'00"	C		10.41 C		Class B
UNMK 32 DP 586433	UNMK 33 DP 586433	ob138	213°56'00"	C		27.76 C		Class B
UNMK 33 DP 586433	UNMK 34 DP 586433	ob139	238°59'00"	C		18.75 C		Class B
UNMK 34 DP 586433	UNMK 35 DP 586433	ob140	258°02'00"	C		44.84 C		Class B
UNMK 35 DP 586433	UNMK 36 DP 586433	ob141	243°39'00"	C		46.79 C		Class B
UNMK 36 DP 586433	UNMK 37 DP 586433	ob142	273°34'00"	C		34.82 C		Class B
UNMK 37 DP 586433	UNMK 38 DP 586433	ob143	264°58'30"	C		81.30 C		Class B
UNMK 38 DP 586433	UNMK 39 DP 586433	ob144	275°41'00"	C		80.17 C		Class B
UNMK 39 DP 586433	UNMK 40 DP 586433	ob145	248°21'00"	C		40.54 C		Class B
UNMK 40 DP 586433	UNMK 41 DP 586433	ob146	276°14'00"	C		44.69 C		Class B
UNMK 41 DP 586433	UNMK 42 DP 586433	ob147	272°03'00"	C		46.29 C		Class B
UNMK 42 DP 586433	UNMK 43 DP 586433	ob148	254°58'00"	C		25.89 C		Class B
UNMK 43 DP 586433	UNMK 44 DP 586433	ob149	226°38'00"	C		15.04 C		Class B
UNMK 44 DP 586433	UNMK 45 DP 586433	ob150	215°12'00"	C		43.27 C		Class B
UNMK 45 DP 586433	UNMK 46 DP 586433	ob151	196°53'00"	C		36.75 C		Class B
UNMK 46 DP 586433	UNMK 47 DP 586433	ob152	219°29'00"	C		19.74 C		Class B
UNMK 47 DP 586433	UNMK 48 DP 586433	ob153	232°53'00"	C		65.34 C		Class B
UNMK 48 DP 586433	UNMK 49 DP 586433	ob154	224°53'00"	C		39.66 C		Class B
UNMK 49 DP 586433	UNMK 50 DP 586433	ob155	184°10'00"	C		68.39 C		Class B
UNMK 50 DP 586433	PEG 20A DP 586433	ob156	187°48'00"	C		20.12 C		Class B
PEG 20A DP 586433	UNMK 51 DP 586433	ob80	183°45'00"	C		50.95 C		Class B
UNMK 51 DP 586433	UNMK 52 DP 586433	ob157	218°53'00"	C		40.12 C		Class B
UNMK 52 DP 586433	UNMK 53 DP 586433	ob158	223°06'00"	C		26.37 C		Class B

# Mark and Vector

Survey Number DP 586433

Meridional Circuit Marlborough 2000

From	To	Code	Bearing	Adpt Surv	Bearing Correction	Distance	Adpt Surv	Class
UNMK 53 DP 586433	UNMK 54 DP 586433	ob159	192°47'00"	C		2.93 C		Class B
UNMK 54 DP 586433	UNMK 55 DP 586433	ob160	128°34'00"	C		34.76 C		Class B
UNMK 55 DP 586433	UNMK 56 DP 586433	ob161	170°35'00"	C		19.90 C		Class B
UNMK 56 DP 586433	UNMK 57 DP 586433	ob162	207°54'00"	C		16.03 C		Class B
UNMK 57 DP 586433	UNMK 58 DP 586433	ob163	92°44'00"	C		18.40 C		Class B
UNMK 58 DP 586433	UNMK 59 DP 586433	ob164	131°58'00"	C		19.63 C		Class B
UNMK 59 DP 586433	UNMK 60 DP 586433	ob165	86°45'00"	C		15.14 C		Class B
UNMK 60 DP 586433	UNMK 61 DP 586433	ob166	111°56'00"	C		78.58 C		Class B
UNMK 61 DP 586433	UNMK 62 DP 586433	ob167	95°18'00"	C		9.85 C		Class B
UNMK 62 DP 586433	UNMK 63 DP 586433	ob168	77°26'00"	C		13.88 C		Class B
UNMK 63 DP 586433	UNMK 64 DP 586433	ob169	60°39'00"	C		20.46 C		Class B
UNMK 64 DP 586433	UNMK 65 DP 586433	ob171	101°55'00"	C		59.71 C		Class B
UNMK 65 DP 586433	UNMK 66 DP 586433	ob172	68°38'00"	C		17.92 C		Class B
UNMK 68 DP 586433	UNMK (4) DP 7308	ob179	101°26'00"	C		42.19 C		Class B
PEG (1) DP 3214	UNMK 72 DP 586433	ob121	148°22'00"	C		19.15 C		Class B
UNMK 72 DP 586433	UNMK 73 DP 586433	ob173	159°46'00"	C		24.26 C		Class B
UNMK 73 DP 586433	UNMK 69 DP 586433	ob174	178°43'30"	C		56.41 C		Class B
UNMK 69 DP 586433	UNMK 70 DP 586433	ob175	152°39'00"	C		24.66 C		Class B
UNMK 70 DP 586433	UNMK 71 DP 586433	ob176	171°10'00"	C		16.17 C		Class B
UNMK 71 DP 586433	IP (1) SO 208	ob177	181°44'30"	C		53.88 C		Class B
ST IA SO 53	IT V DP 2679	ob90	188°31'25"	A	DP 525706	0°00'00"	486.52 A	DP 525706
IT IX DP 5394	IS X DP 5394	ob92	96°10'10"	M			255.38 M	
IS II DP 3214	IT 2 DP 586433	ob111	70°17'00"	M			624.66 M	
IS IV DP 7997	IT V DP 2679	ob88	13°53'00"	M			411.09 M	
UNMK 66 DP 586433	UNMK 67 DP 586433	ob170	55°33'00"	C			31.00 C	Class B

# Mark and Vector

Survey Number DP 586433

Meridional Circuit Marlborough 2000

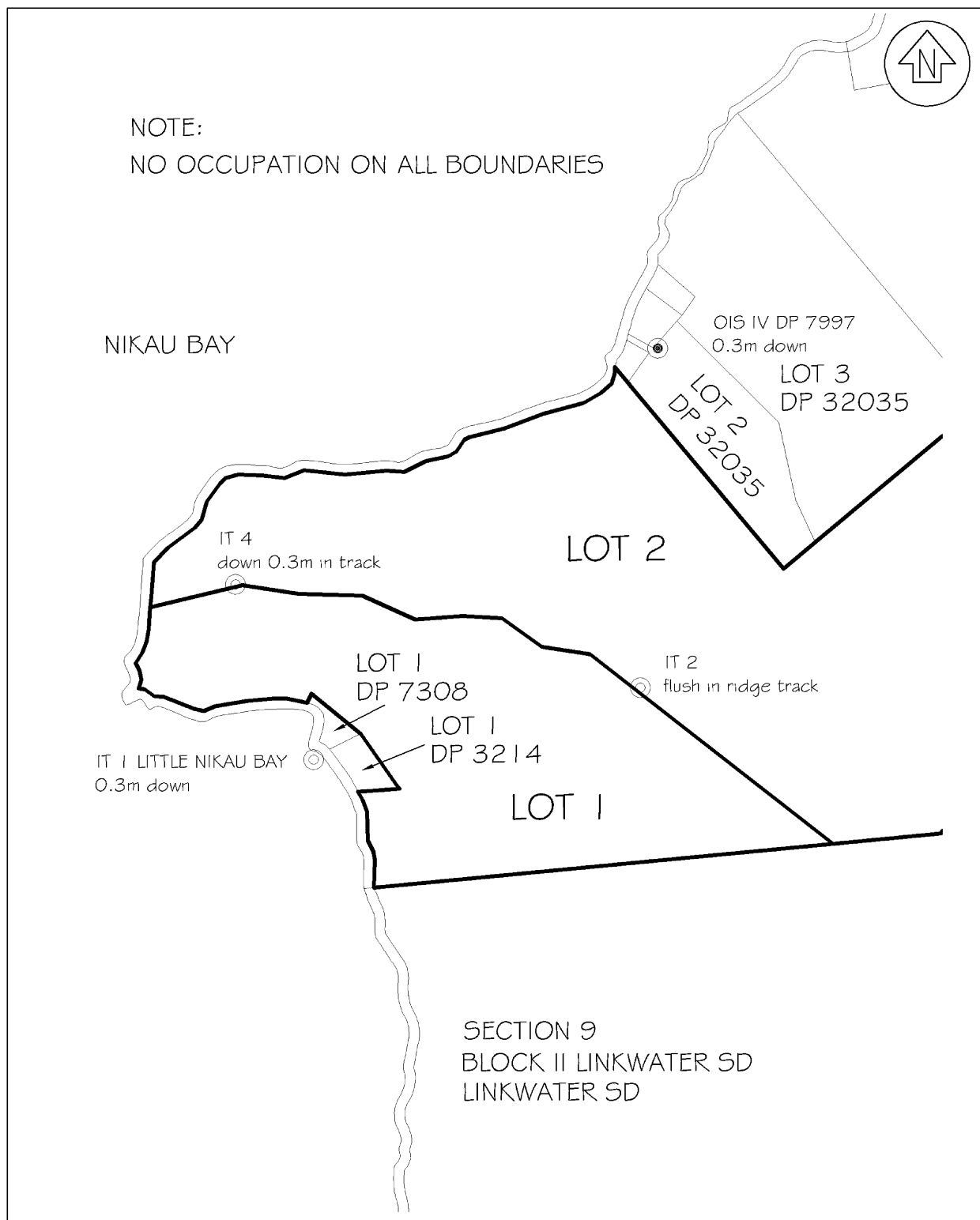
From	To	Code	Bearing	Adpt Surv	Bearing Correction	Distance	Adpt Surv	Class
UNMK 67 DP 586433	UNMK 68 DP 586433	ob178	89°50'00" C			26.85 C		Class B

Mark Name	Mark Condition	Description
IS II DP 3214		FLUSH IN BEACH
IS IV DP 7997		0.3 DN
IT 1 LITTLE NIKAU B		Iron Tube down 0.30m in grassed landing at Little Nikau Bay
IT 10 DP 586433		FLUSH
IT 11 DP 586433		FLUSH
IT 12 DP 586433		FLUSH
IT 13 DP 586433		FLUSH
IT 14 DP 586433		FLUSH
IT 15 DP 586433		FLUSH
IT 16 DP 586433		Flush
IT 17 DP 586433		Flush
IT 18 DP 586433		Flush
IT 19 DP 586433		Flush
IT 2 DP 586433		FLUSH in ridge track
IT 20 DP 586433		FLUSH IN BEACH
IT 21 DP 586433		FLUSH
IT 22 DP 586433		FLUSH
IT 3 DP 586433		FLUSH
IT 4 DP 586433		DN 0.3 in track
IT 5 DP 586433		DN 0.3 in track
IT 6 DP 586433		FLUSH
IT 7 DP 586433		FLUSH
IT 8 DP 586433		FLUSH
IT 9 DP 586433		FLUSH
NAIL II DP 525706		IN JETTY
Trig M	Searched For and Not Found	
XIVa SO 208	Searched For and Not Found	


\*\*\* End of Report \*\*\*

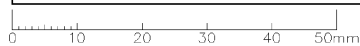


# Occupation Diagram



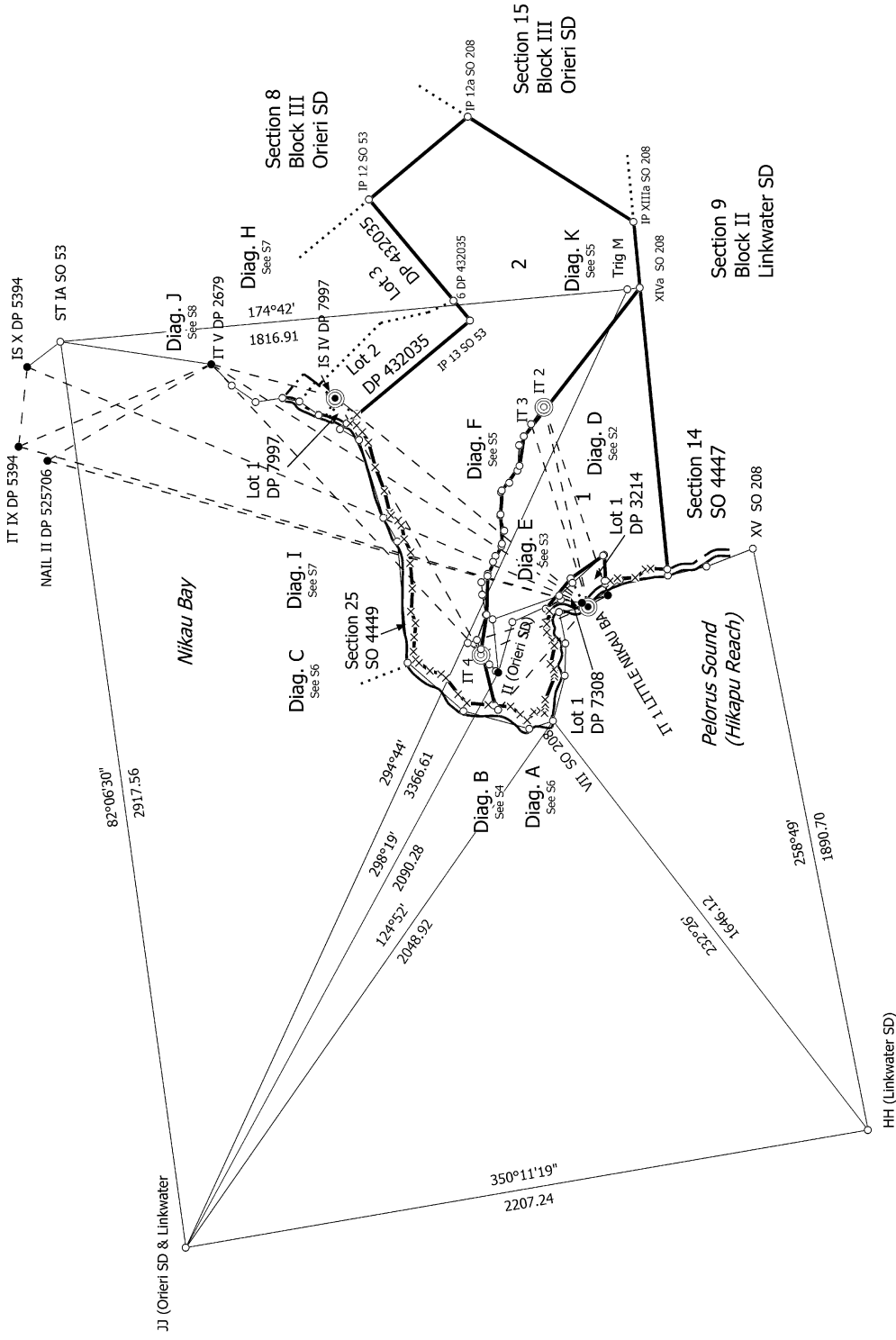
C:\12dSynergy\data\APSERVER\15430 - Tainui Investments (1991) Ltd - Subdivision Nikau Bay\_16135E-survey\Supporting Docs\Occupation.dwg

 <p><b>Ayson Survey+</b></p> <p>89 Middle Renwick Road P.O. Box 704 Blenheim, New Zealand Ph 03 579 2906 office@ayson.co.nz www.ayson.co.nz</p> <p>RESOURCE MANAGEMENT + LAND DEVELOPMENT + SUBDIVISION</p>	OCCUPATION DIAGRAM DP 586433					
	SCALE	DATE	CAD	JOB NO.	SHEET	ISSUE
1:10000	03.02.23	KB	15430	A4	A	





Diag. G  
See S8



JJ (Orieri SD & Linkwater)

HH (Linkwater SD)

Ayson: 15430

S 1/8

Land District: Marlborough

**Digitally Generated Plan**

Generated on: 18/08/2023 2:21pm Page 10 of 20

**LOTS 1 AND 2 BEING A SUBDIVISION OF PART SECTION 9 BLOCK III**

**ORIERI SD**

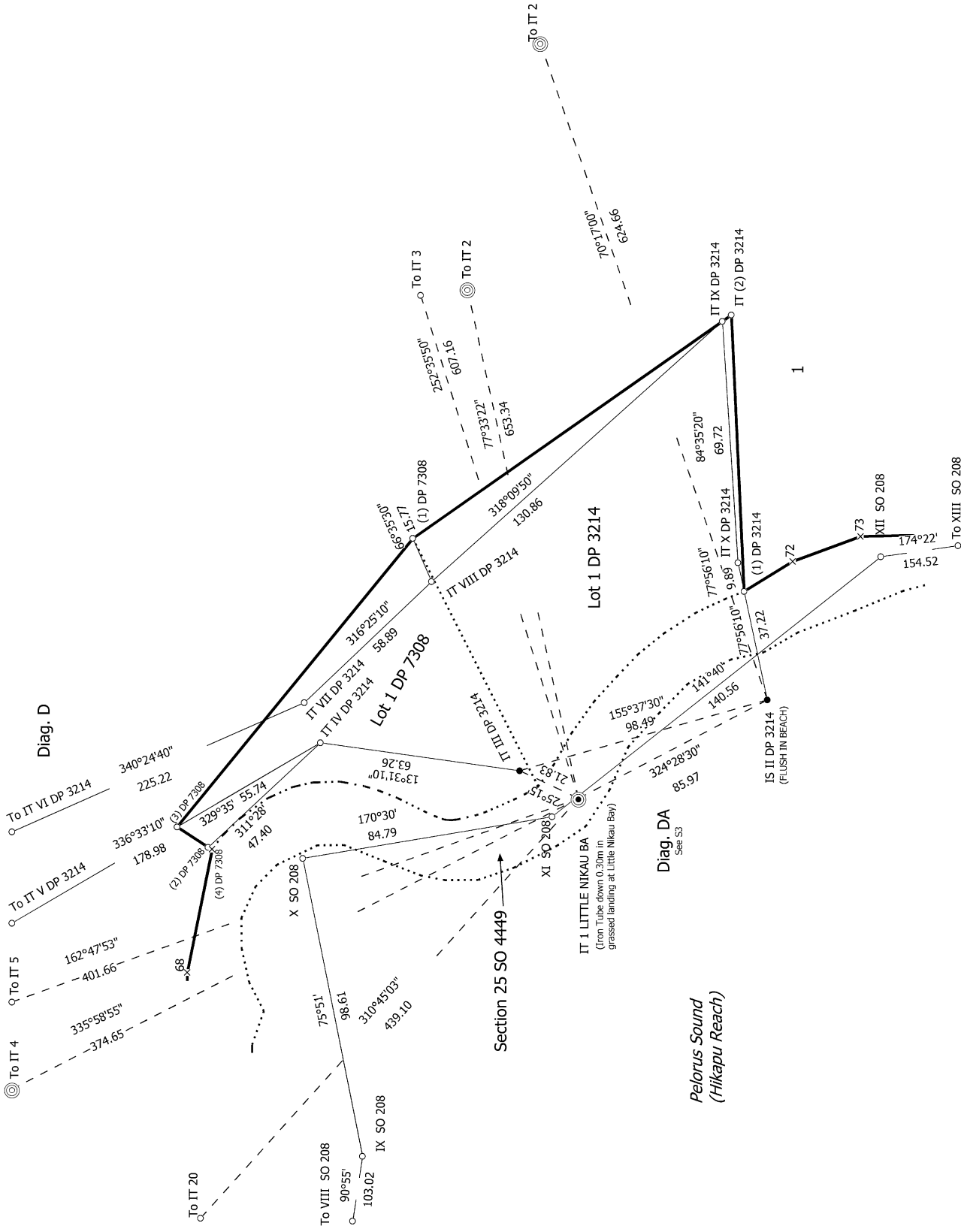
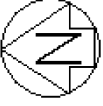
Surveyor: Matthew William Straker

Firm: Ayson and Partners

Date of Survey: 16/12/2022

Record of Survey  
DP 586433

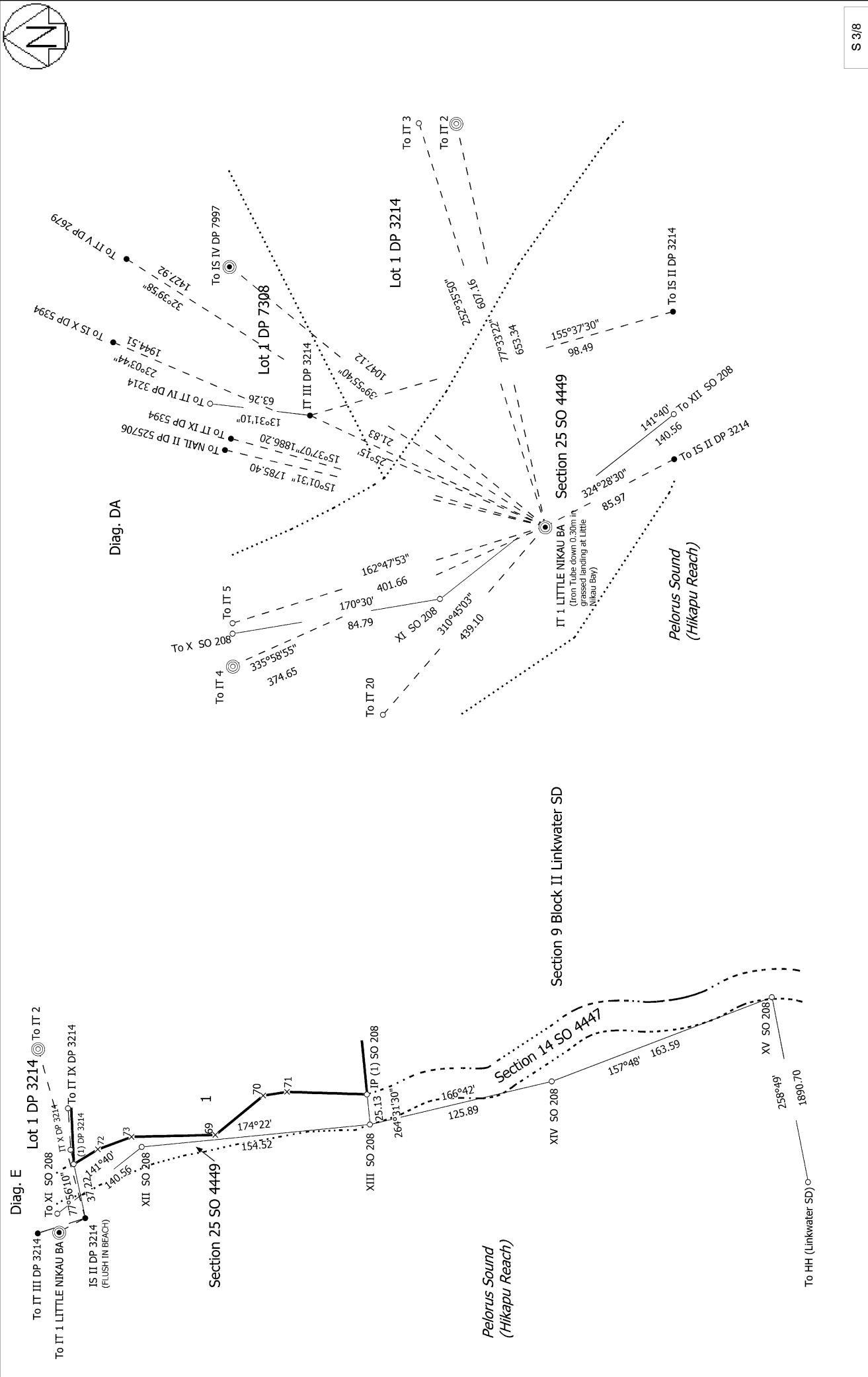
Deposited on: 15/08/2023



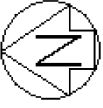
Record of Survey  
 DP 586433  
 Deposited on: 15/08/2023

Surveyor: Matthew William Straker  
 Firm: Ayson and Partners  
 Date of Survey: 16/12/2022

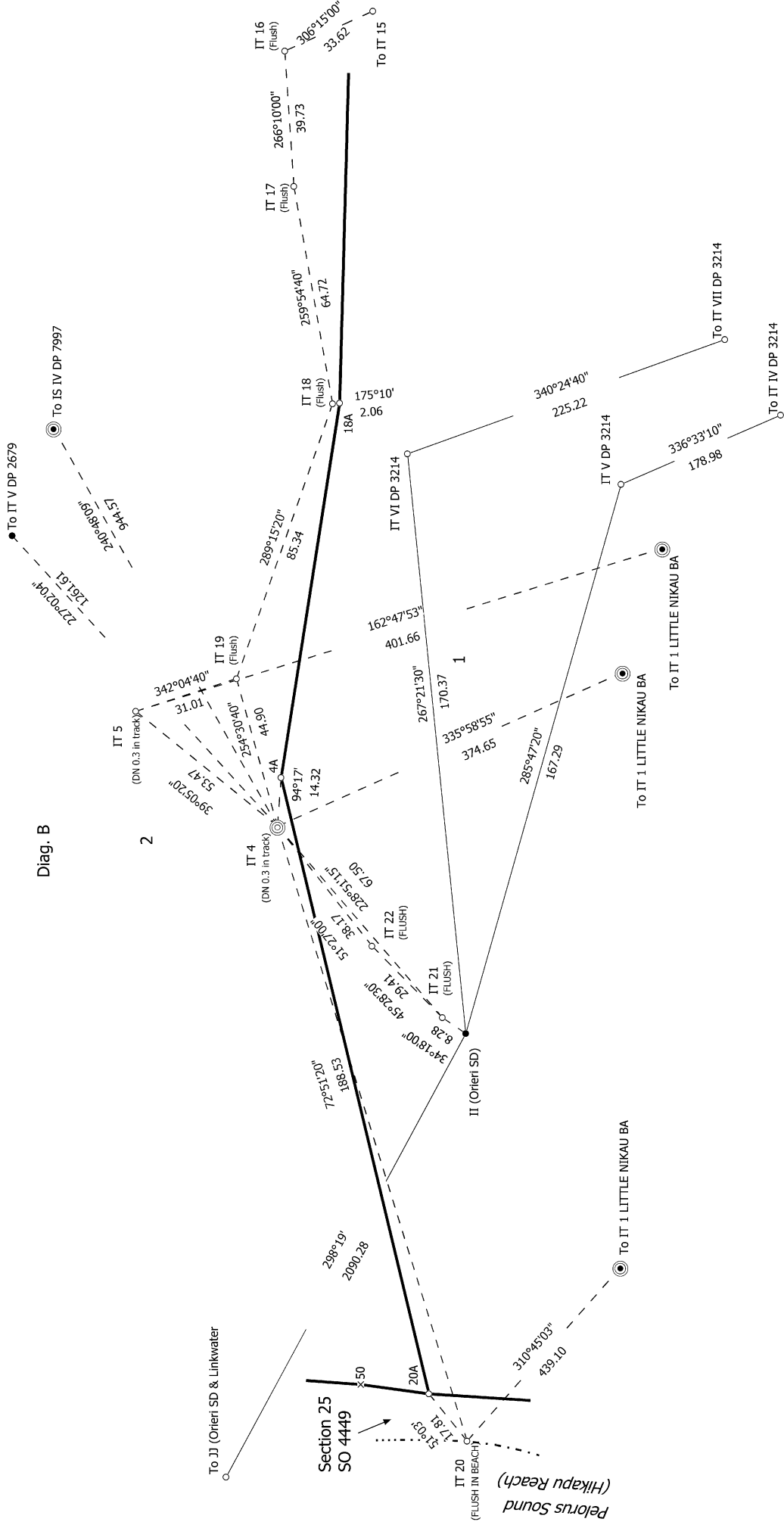
LOTS 1 AND 2 BEING A SUBDIVISION OF PART SECTION 9 BLOCK III  
 ORIERI SD



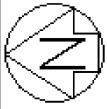
<p>Land District: Marlborough</p>	<p>Record of Survey DP 586433</p>	<p>LOTS 1 AND 2 BEING A SUBDIVISION OF PART SECTION 9 BLOCK III ORIERI SD</p>
<p>Digitally Generated Plan Generated on: 18/08/2023 2:21pm Page 12 of 20</p>	<p>Surveyor: Matthew William Straker Firm: Ayson and Partners Date of Survey: 16/12/2022</p>	<p>Deposited on: 15/08/2023</p>



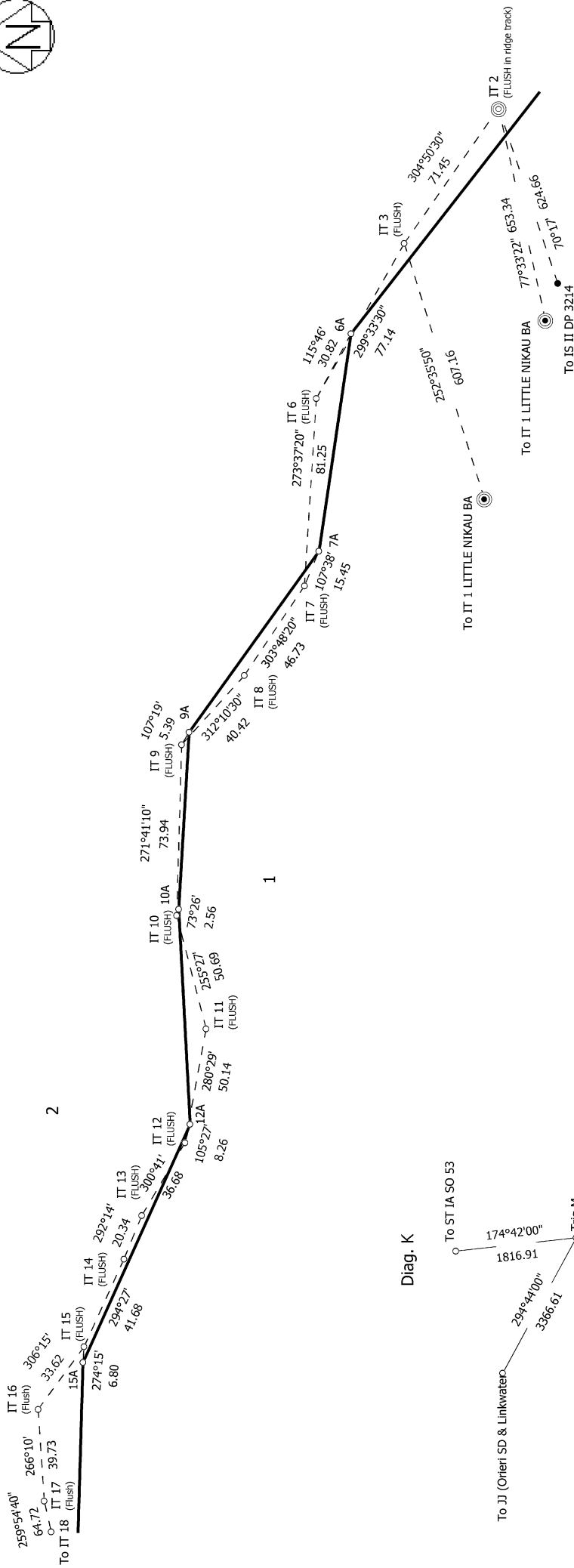
Diag. B



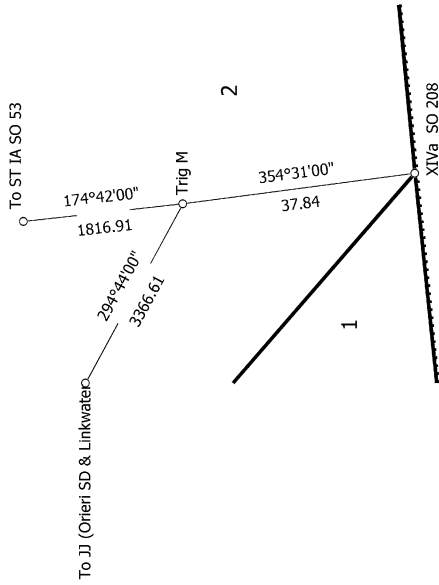
Land District: Marlborough	<b>LOTS 1 AND 2 BEING A SUBDIVISION OF PART SECTION 9 BLOCK III ORIERI SD</b>	Record of Survey DP 586433
<b>Digitally Generated Plan</b> Generated on: 18/08/2023 2:21pm Page 13 of 20	Surveyor: Matthew William Straker Firm: Ayson and Partners Date of Survey: 16/12/2022	Deposited on: 15/08/2023



Diag. F



Diag. K

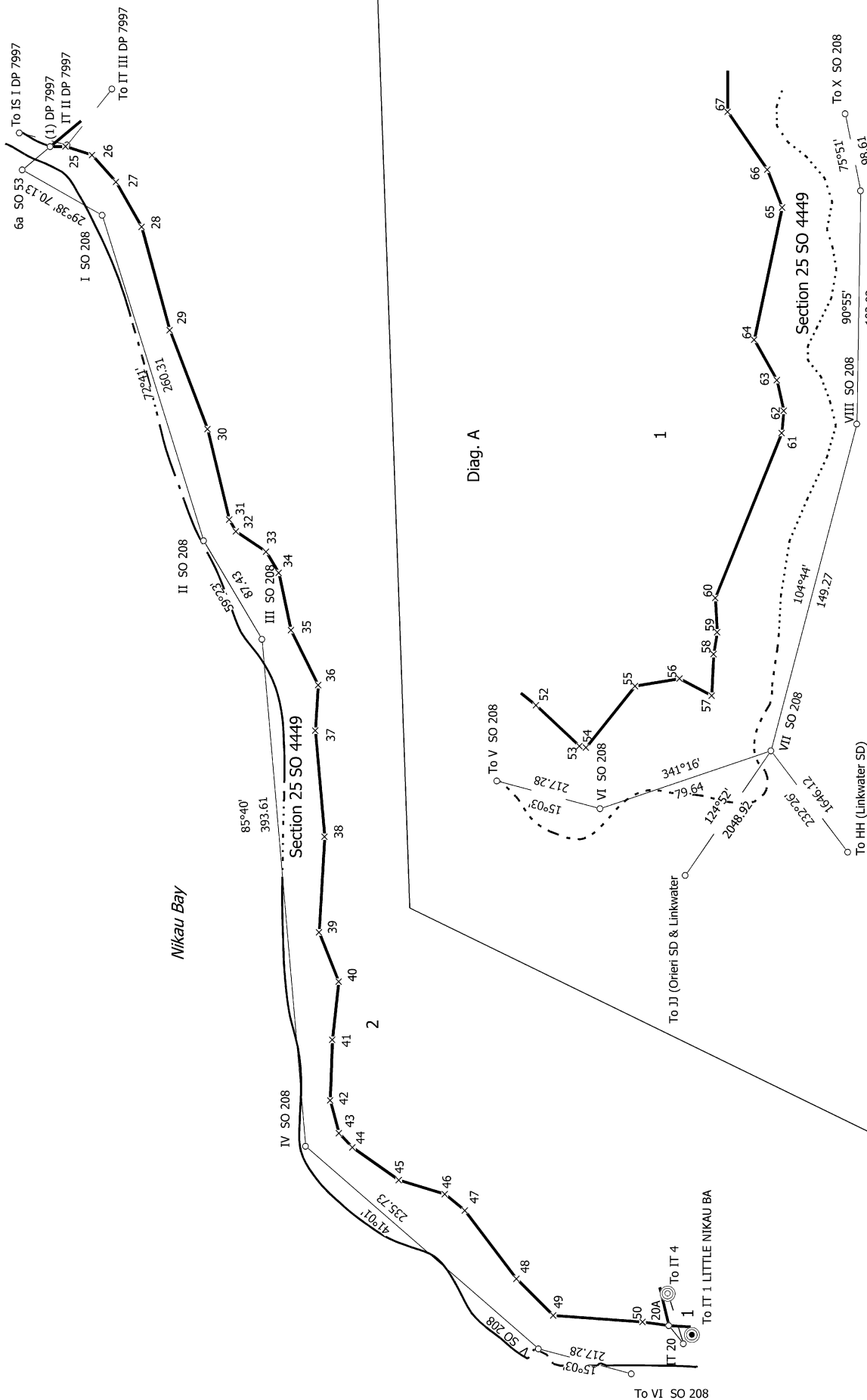


Section 9 Block II Linkwater SD

<p>Land District: Marlborough</p> <p><b>Digitally Generated Plan</b></p> <p>Generated on: 18/08/2023 2:21pm Page 14 of 20</p>	<p><b>LOTS 1 AND 2 BEING A SUBDIVISION OF PART SECTION 9 BLOCK III</b></p> <p><b>ORIERI SD</b></p>	<p>Surveyor: Matthew William Straker</p> <p>Firm: Ayson and Partners</p> <p>Date of Survey: 16/12/2022</p>	<p>Record of Survey</p> <p>DP 586433</p> <p>Deposited on: 15/08/2023</p>
---	--	--	--

Diag. C

Lot 1 DP 7997



S 6/8

Land District: Marlborough

**Digitally Generated Plan**  
Generated on: 18/08/2023 2:21pm Page 15 of 20

**LOTS 1 AND 2 BEING A SUBDIVISION OF PART SECTION 9 BLOCK III**

**ORIERI SD**

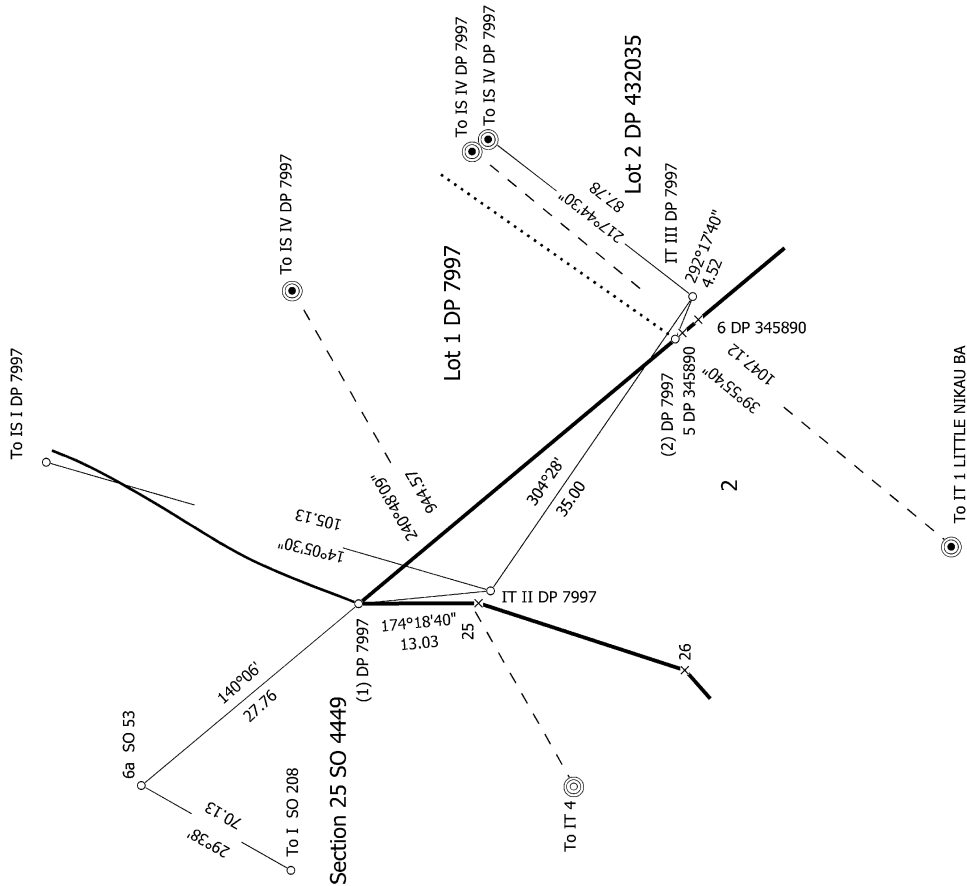
Surveyor: Matthew William Straker  
Firm: Ayson and Partners  
Date of Survey: 16/12/2022

Record of Survey  
DP 586433

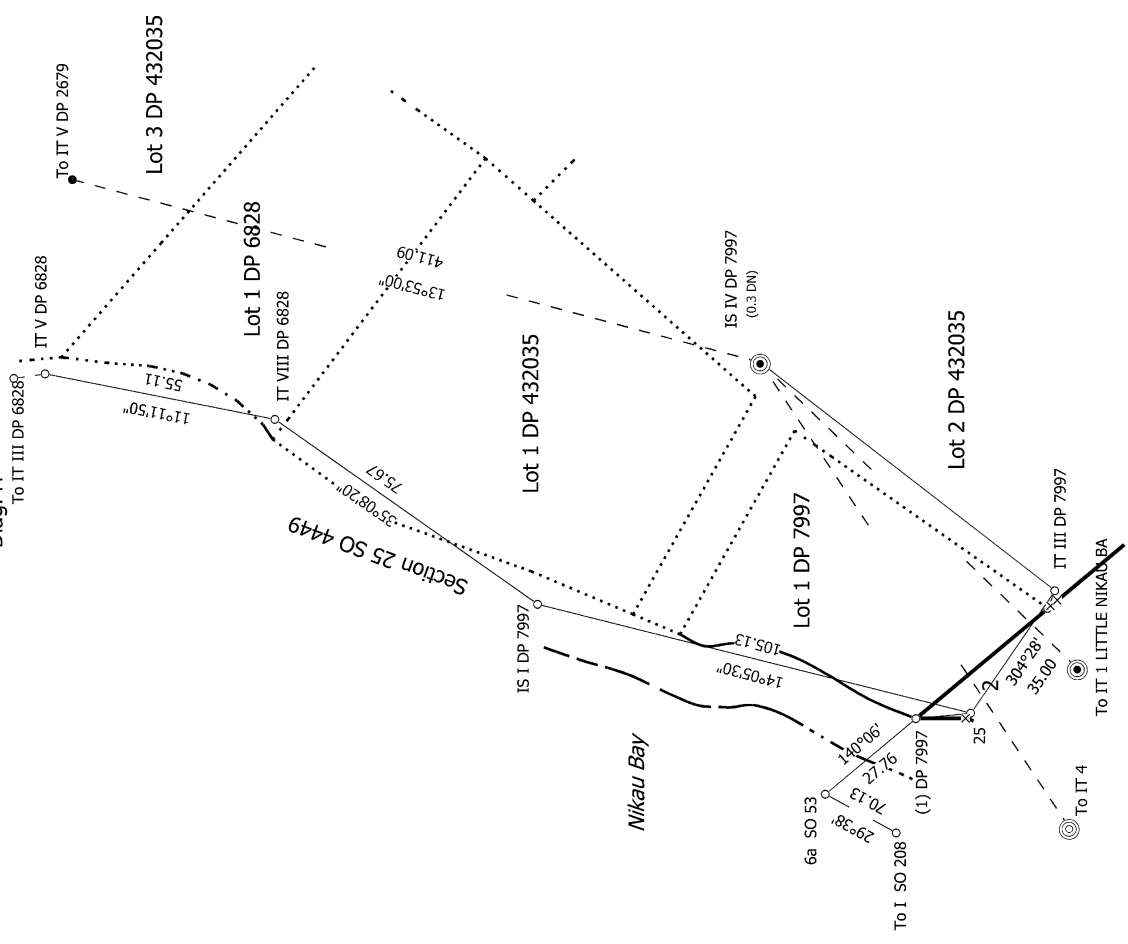
Deposited on: 15/08/2023



Diag. I



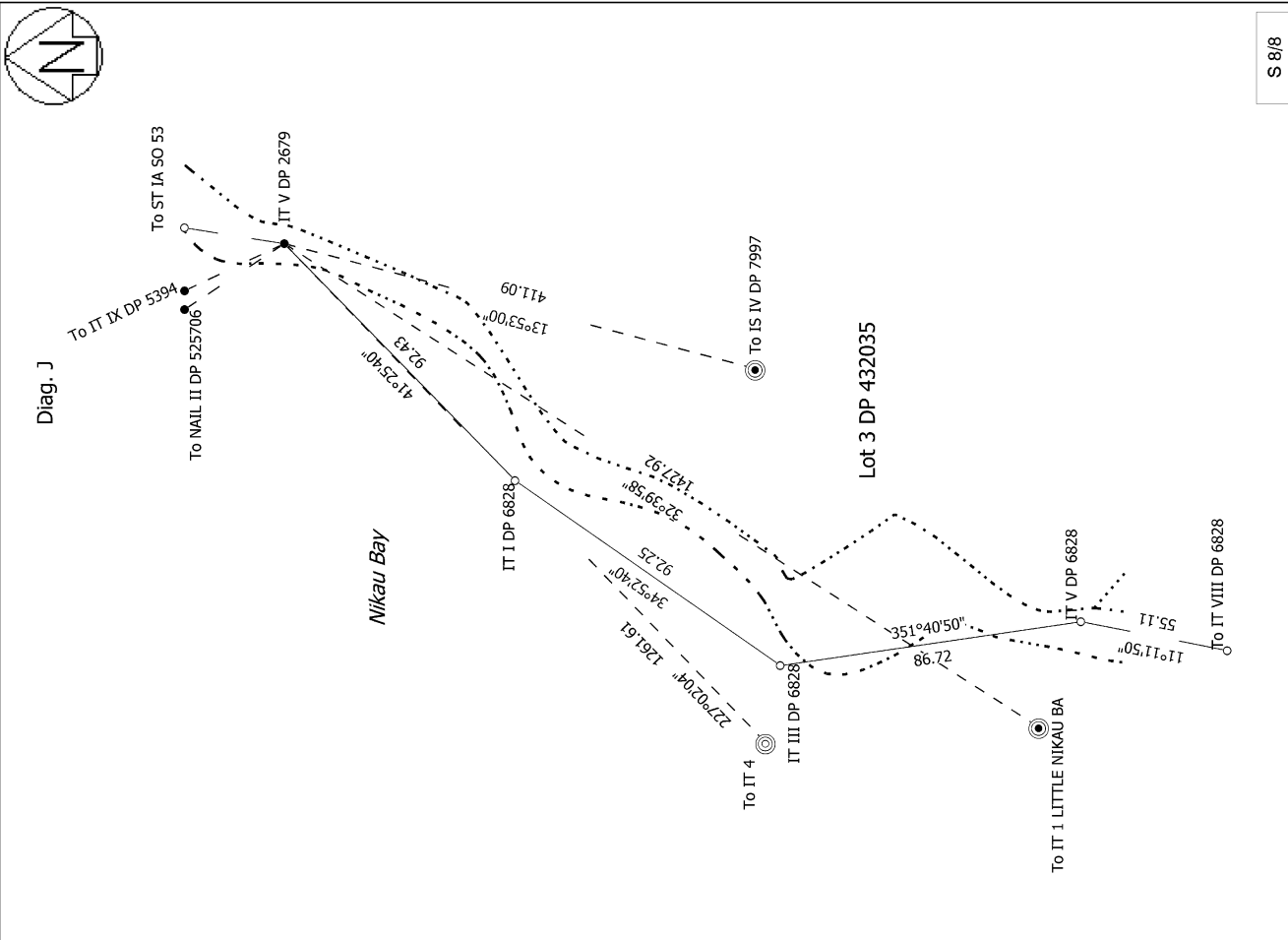
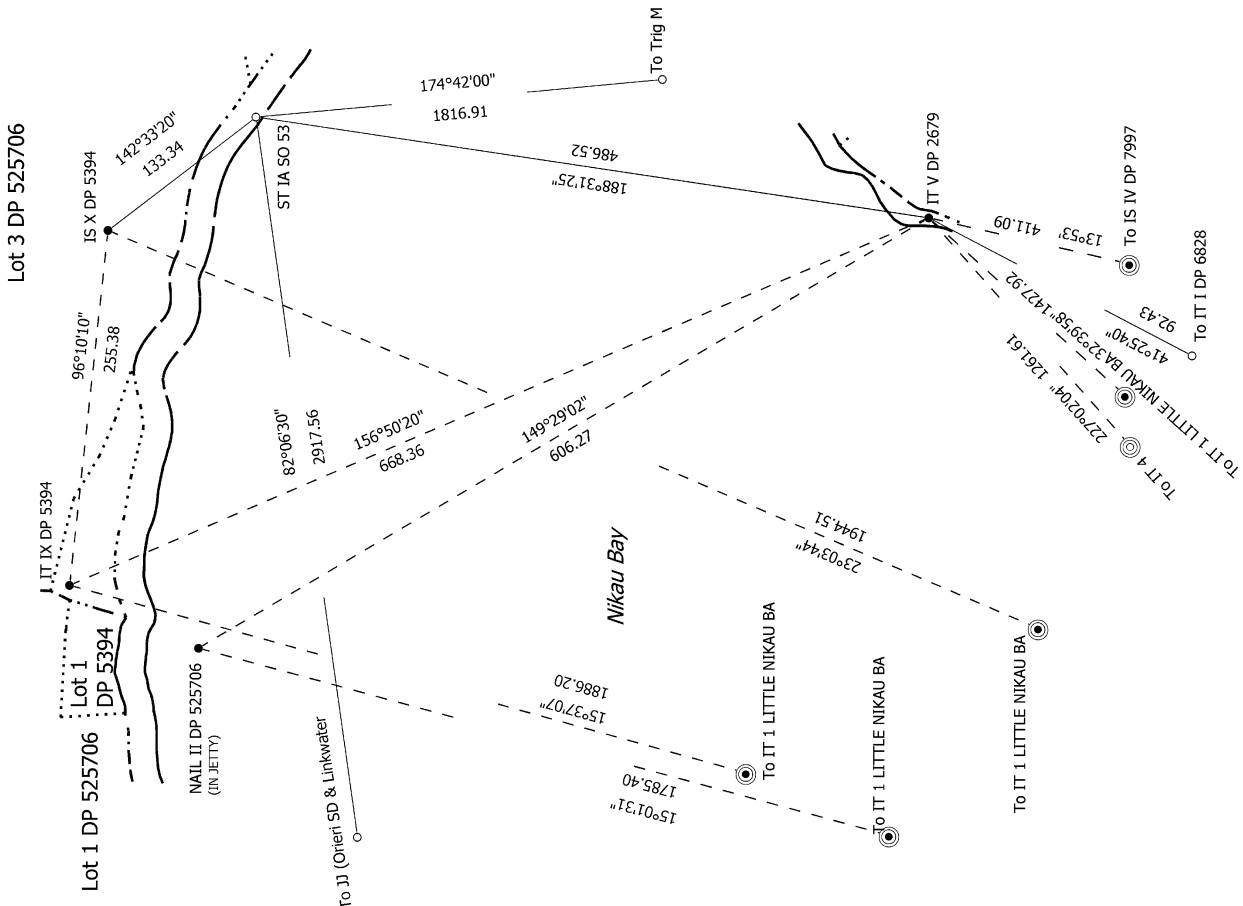
Diag. H



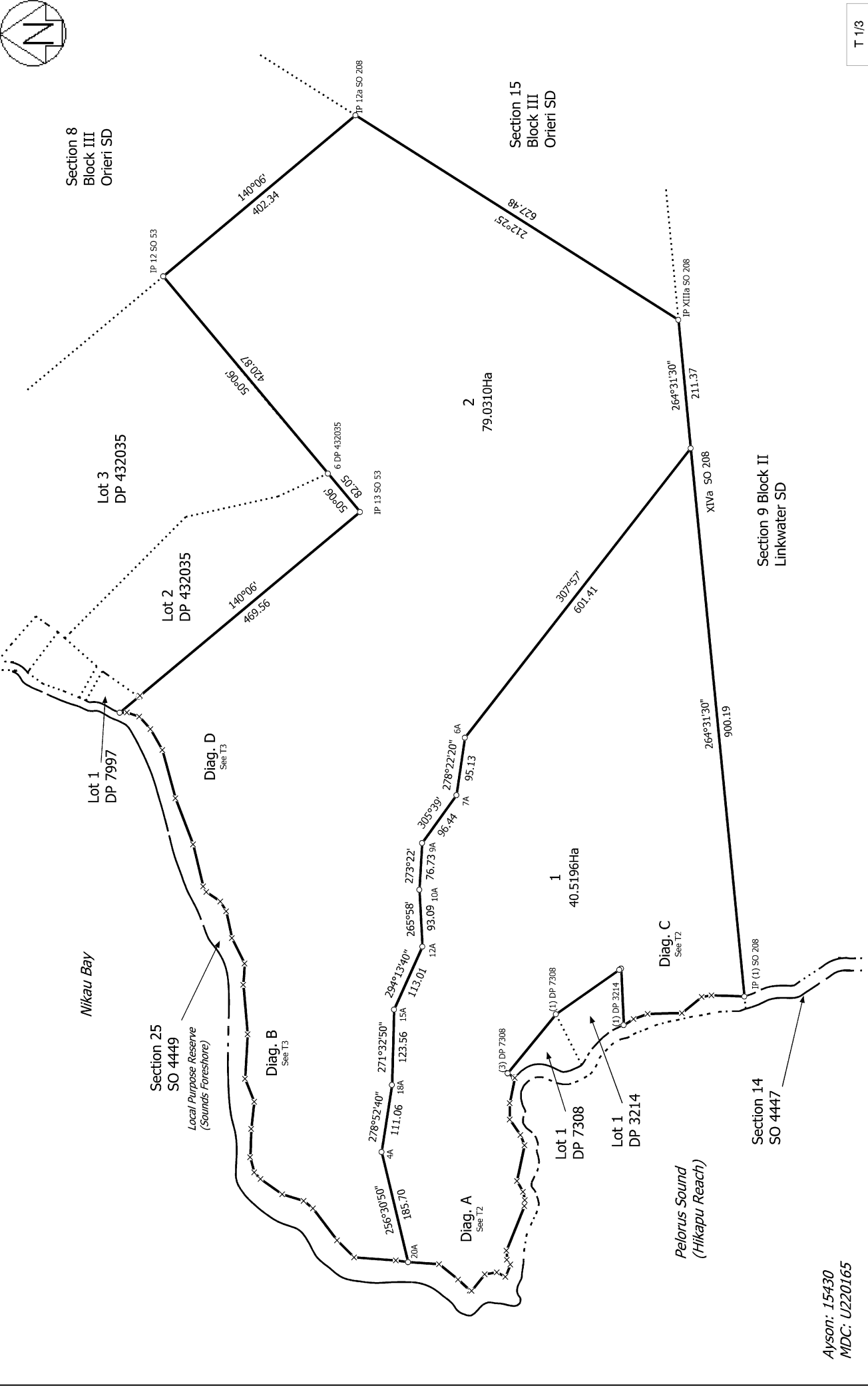
Land District: Marlborough	LOTS 1 AND 2 BEING A SUBDIVISION OF PART SECTION 9 BLOCK III	Record of Survey DP 586433
Digitally Generated Plan	ORIARI SD	Surveyor: Matthew William Straker Firm: Ayson and Partners Date of Survey: 16/12/2022
Generated on: 18/08/2023 2:21pm Page 16 of 20		Deposited on: 15/08/2023



Diag. G  
Distorted



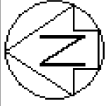
S 8/8



Ayson: 15430  
MDC: U220165

T 1/3

<p>Land District: Marlborough</p> <p><b>Digitally Generated Plan</b></p> <p>Generated on: 18/08/2023 2:21pm Page 18 of 20</p>	<p><b>LOTS 1 AND 2 BEING A SUBDIVISION OF PART SECTION 9 BLOCK III</b></p> <p><b>ORIERI SD</b></p>	<p>Surveyor: Matthew William Straker Firm: Ayson and Partners Date of Survey: 16/12/2022</p>	<p>Record of Survey DP 586433</p> <p>Deposited on: 15/08/2023</p>
---	--	--	---



Diag. CA  
See T2

Diag. C

Diag. A

Nikau Bay

Lot 1 DP 7308

Lot 1 DP 3214

Section 25  
SO 4449  
Local Purpose Reserve  
(Sounds Foreshore)

Diag. CA  
Distorted

Lot 1 DP 7308

Section 25 SO 4449  
Local Purpose Reserve  
(Sounds Foreshore)

Pelorus Sound  
(Hikapu Reach)

1  
40.5196Ha

2  
79.0310Ha

Section 25  
SO 4449  
Local Purpose Reserve  
(Sounds Foreshore)

Section 14  
SO 4447

Pelorus Sound  
(Hikapu Reach)

Section 9 Block II  
Linkwater SD

T 2/3

Land District: Marlborough

LOTS 1 AND 2 BEING A SUBDIVISION OF PART SECTION 9 BLOCK III

ORIERI SD

Surveyor: Matthew William Straker

Firm: Ayson and Partners

Date of Survey: 16/12/2022

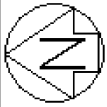
Record of Survey

DP 586433

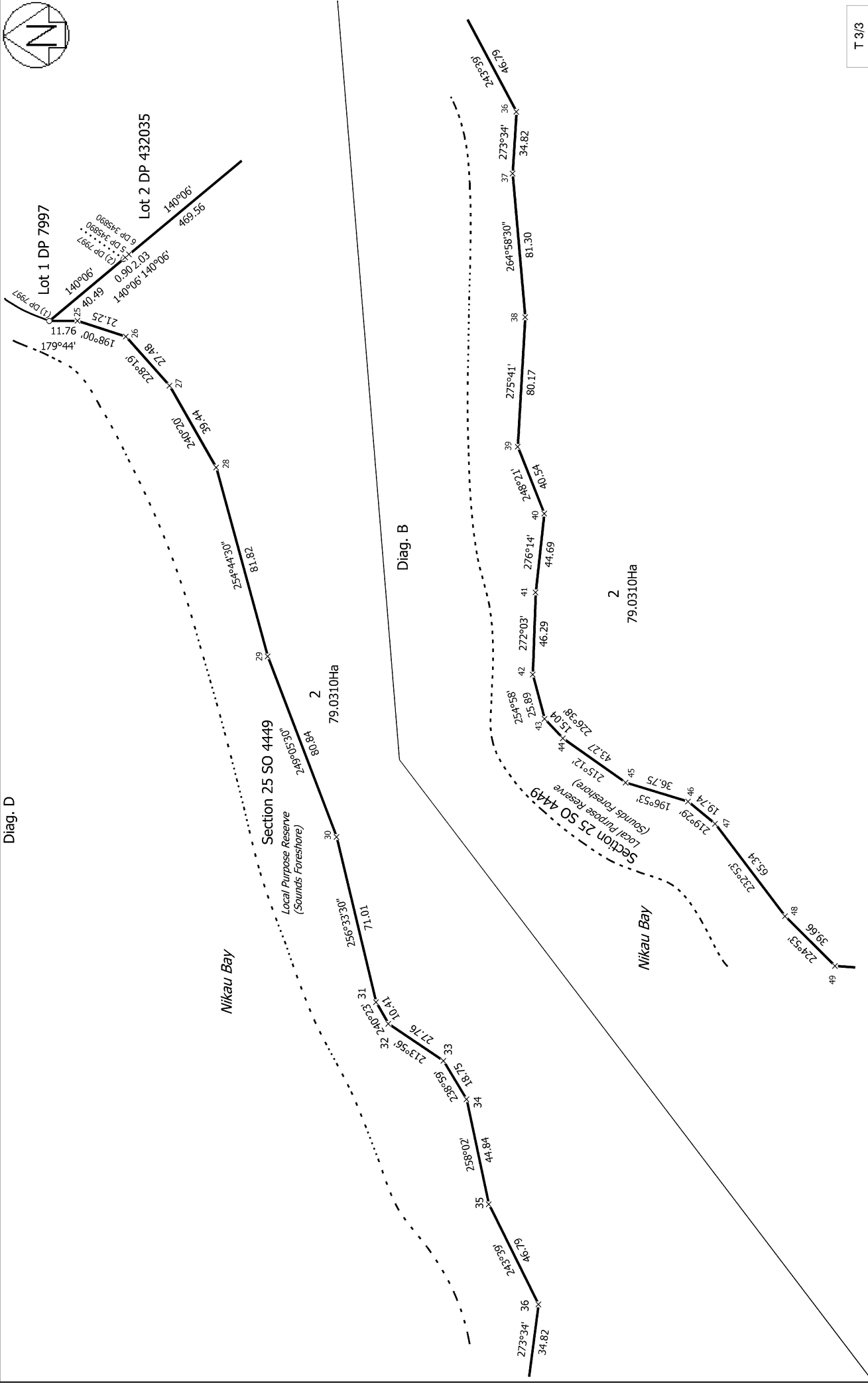
Deposited on: 15/08/2023

Digitally Generated Plan

Generated on: 18/08/2023 2:21pm Page 19 of 20



Diag. D



T 3/3

Land District: Marlborough	Record of Survey DP 586433	Surveyor: Matthew William Straker Firm: Ayson and Partners Date of Survey: 16/12/2022	Recorded on: 15/08/2023
<b>LOTS 1 AND 2 BEING A SUBDIVISION OF PART SECTION 9 BLOCK III ORIERS ID</b>			
<b>Digitally Generated Plan</b>			
<small>Generated on: 18/08/2023 2:21pm Page 20 of 20</small>			