



Record of Survey - DP 586211

Survey Number DP 586211
Surveyor Reference 22171 - 1/66 & 2/66 Simon Ellice Drive
Surveyor Kerry Gray Harford
Survey Firm Axis Consultants Ltd
Surveyor Declaration I Kerry Gray Harford, being a licensed cadastral surveyor, certify that--
(a) this dataset provided by me and its related survey are accurate, correct and in accordance with the Cadastral Survey Act 2002 and Cadastral Survey Rules 2021; and
(b) the survey was undertaken by me or under my personal direction.
Declared on 21 Nov 2023 05:08 PM

Survey Details

Dataset Description Lots 1 and 2 Being a Subdivision of Lot 31 DP 79495
Purpose LT Subdivision
Status Deposited **Type** Survey
Land District North Auckland **Survey Class** Class A
Meridional Circuit Mount Eden 2000 **Vertical Datum** Auckland 1946

Survey Dates

Surveyed Date 23/12/2022 **Certified Date** 21/11/2023
Submitted Date 21/11/2023 17:08:16 **Survey Approval Date** 30/11/2023
Deposit Date 23/01/2024

Referenced Surveys

Survey Number	Land District	Bearing Correction
DP 79495	North Auckland	0°00'00"
DP 79496	North Auckland	0°00'00"

Territorial Authorities

Auckland Council

Comprised In

RT NA41C/1192
RT NA41C/1193

Created Parcels

Parcels	Parcel Intent	Area	RT Reference
Area F Deposited Plan 586211	Easement		
Height-Limited Lot 1 Deposited Plan 586211	Fee Simple Title	0.0441 Ha	1107782
Height-Limited Lot 2 Deposited Plan 586211	Fee Simple Title	0.0372 Ha	1107783
Height-Limited Area A Deposited Plan 586211	Easement		
Height-Limited Area B Deposited Plan 586211	Easement		
Height-Limited Area C Deposited Plan 586211	Easement		
Height-Limited Area D Deposited Plan 586211	Easement		
Total Area		<hr/> 0.0813 Ha	

Mark and Vector

Survey Number DP 586211

Meridional Circuit Mount Eden 2000

From	To	Code	Bearing	Adpt Surv	Bearing Correction	Distance	Adpt Surv	Class
LP XXI DP 79496	RM X DP 84479	ob0	200°45'50" M			92.53 M		
RM X DP 84479	ALP 33 DP 524749	ob3	133°12'50" M			64.81 M		
ALP 33 DP 524749	RM XII DP 84479	ob4	153°39'30" M			84.52 M		
IS XI DP 74397	LP II DP 200701	ob5	317°35'00" M			83.34 M		
LP II DP 200701	LP XXII DP 79495	ob6	312°37'30" M			95.39 M		
LP XXII DP 79495	LP XXI DP 79496	ob8	221°05'30" M			99.48 M		
LP XXI DP 79496	AP 3 DP 586211	ob1	50°53'15" M			65.40 M		
AP 3 DP 586211	AP 1 DP 586211	ob10	43°54'00" M			27.70 M		
AP 1 DP 586211	AP 2 DP 586211	ob12	124°49'20" M			23.62 M		
AP 2 DP 586211	LP II DP 200701	ob14	128°55'50" M			59.43 M		
AP 1 DP 586211	LP XXII DP 79495	ob13	341°40'00" M			14.50 M		
LP XXII DP 79495	IS II DP 79495	ob9	348°21'00" A	DP 79495	0°00'00"	12.71 A	DP 79495	
IS II DP 79495	PEG 1 DP 79495	ob15	169°48'10" A	DP 79495	0°00'00"	33.09 A	DP 79495	
PEG 1 DP 79495	DISK 10 DP 586211	ob16	221°00'00" A	DP 79495	0°00'00"	13.44 C		Class A
DISK 10 DP 586211	PEG 2 DP 79495	ob18	221°00'00" A	DP 79495	0°00'00"	15.34 C		Class A
PEG 2 DP 79495	PEG 3 DP 79495	ob20	221°00'00" A	DP 79495	0°00'00"	17.75 A	DP 79495	
PEG 3 DP 79495	LP XXI DP 79496	ob21	242°38'40" A	DP 79496	0°00'00"	42.95 A	DP 79496	
PEG 1 DP 79495	PEG 4 DP 79495	ob17	89°15'00" A	DP 79495	0°00'00"	7.99 A	DP 79495	Class A
UNMK 32 DP 586211	PEG 6 DP 79495	ob61	137°30'00" A	DP 79495	0°00'00"	3.00 C		Class A
PEG 6 DP 79495	DISK 11 DP 586211	ob23	222°56'30" A	DP 79495	0°00'00"	17.54 C		Class A
DISK 11 DP 586211	PEG 5 DP 79495	ob24	222°56'30" A	DP 79495	0°00'00"	15.59 C		Class A
PEG 5 DP 79495	PEG 2 DP 79495	ob25	313°48'40" A	DP 79495	0°00'00"	23.80 A	DP 79495	Class A
DISK 10 DP 586211	UNMK 12 DP 586211	ob19	133°11'00" C			8.10 C		Class A
UNMK 12 DP 586211	UNMK 13 DP 586211	ob26	133°11'00" C			1.29 C		Class A
UNMK 13 DP 586211	UNMK 14 DP 586211	ob28	133°11'00" C			0.12 C		Class A
UNMK 14 DP 586211	UNMK 15 DP 586211	ob29	133°11'00" C			6.78 C		Class A
UNMK 15 DP 586211	UNMK 16 DP 586211	ob31	133°11'00" C			1.50 C		Class A

Mark and Vector

Survey Number DP 586211

Meridional Circuit Mount Eden 2000

From	To	Code	Bearing	Adpt Surv	Bearing Correction	Distance	Adpt Surv	Class
UNMK 16 DP 586211	UNMK 17 DP 586211	ob33	133°11'00"	C		0.70 C		Class A
UNMK 33 DP 586211	DISK 11 DP 586211	ob62	133°11'00"	C		3.00 C		Class A
UNMK 12 DP 586211	UNMK 60 DP 586211	ob27	258°24'00"	C		3.52 C		Class A
UNMK 60 DP 586211	UNMK 18 DP 586211	ob49	266°44'00"	C		4.62 C		Class A
UNMK 18 DP 586211	UNMK 19 DP 586211	ob36	173°06'00"	C		1.04 C		Class A
UNMK 19 DP 586211	UNMK 61 DP 586211	ob37	86°44'00"	C		4.72 C		Class A
UNMK 61 DP 586211	UNMK 13 DP 586211	ob60	78°24'00"	C		4.25 C		Class A
UNMK 17 DP 586211	UNMK 20 DP 586211	ob34	223°37'00"	C		0.50 C		Class A
UNMK 20 DP 586211	UNMK 21 DP 586211	ob38	179°16'00"	C		1.50 C		Class A
UNMK 21 DP 586211	UNMK 56 DP 586211	ob39	132°48'00"	C		1.48 C		Class A
UNMK 56 DP 586211	UNMK 22 DP 586211	ob41	222°48'00"	C		10.10 C		Class A
UNMK 22 DP 586211	UNMK 24 DP 586211	ob40	312°00'00"	C		11.70 C		Class A
UNMK 24 DP 586211	UNMK 25 DP 586211	ob42	346°00'00"	C		7.12 C		Class A
UNMK 25 DP 586211	UNMK 57 DP 586211	ob43	266°00'00"	C		2.01 C		Class A
UNMK 57 DP 586211	UNMK 58 DP 586211	ob47	356°00'00"	C		0.72 C		Class A
UNMK 58 DP 586211	UNMK 26 DP 586211	ob50	86°00'00"	C		2.59 C		Class A
UNMK 26 DP 586211	UNMK 27 DP 586211	ob44	166°00'00"	C		7.50 C		Class A
UNMK 27 DP 586211	UNMK 28 DP 586211	ob45	132°00'00"	C		10.75 C		Class A
UNMK 28 DP 586211	UNMK 30 DP 586211	ob46	42°48'00"	C		8.40 C		Class A
UNMK 30 DP 586211	UNMK 31 DP 586211	ob48	312°48'00"	C		2.49 C		Class A
UNMK 31 DP 586211	UNMK 16 DP 586211	ob59	43°37'00"	C		2.60 C		Class A
UNMK 14 DP 586211	UNMK 50 DP 586211	ob30	223°11'00"	C		0.18 C		Class A
UNMK 50 DP 586211	UNMK 51 DP 586211	ob51	133°11'00"	C		6.78 C		Class A
UNMK 51 DP 586211	UNMK 15 DP 586211	ob52	43°11'00"	C		0.18 C		Class A

Mark and Vector

Survey Number DP 586211

Meridional Circuit Mount Eden 2000

From	To	Code	Bearing	Adpt Surv	Bearing Correction	Distance	Adpt Surv	Class
UNMK 15 DP 586211	UNMK 52 DP 586211	ob32	43°11'00"	C		0.18 C		Class A
UNMK 52 DP 586211	UNMK 53 DP 586211	ob53	313°11'00"	C		6.78 C		Class A
UNMK 53 DP 586211	UNMK 14 DP 586211	ob54	223°11'00"	C		0.18 C		Class A
AP 6 DP 586211	AP 5 DP 586211	ob55	235°13'20"	M		14.98 M		
AP 5 DP 586211	AP 2 DP 586211	ob57	41°12'00"	M		14.13 M		
AP 6 DP 586211	LP XXII DP 79495	ob56	317°25'30"	M		39.85 M		
AP 5 DP 586211	DISK 11 DP 586211	ob58	195°08'00"	M		9.34 M		
AP 3 DP 586211	DISK 10 DP 586211	ob11	69°13'00"	M		9.75 M		
LP XXI DP 79496	LP II DP 200701	ob2	85°37'20"	M		135.98 M		
LP II DP 200701	LP III DP 200701	ob7	137°49'00"	M		15.52 M		
PEG 4 DP 79495	UNMK 32 DP 586211	ob22	137°30'00"	A	DP 79495	0°00'00"	16.06 C	Class A
UNMK 17 DP 586211	UNMK 33 DP 586211	ob35	133°11'00"	C		2.83 C		Class A
UNMK 33 DP 586211	UNMK 32 DP 586211	ob63	42°59'00"	C		17.77 C		Class A

Mark Name	Mark Condition	Description
ALP 33 DP 524749		in chan.
AP 1 DP 586211		top of kerb RL = 19.19
AP 2 DP 586211		in conc fpath RL = 21.04
AP 3 DP 586211		in conc fpath
AP 5 DP 586211		in conc
AP 6 DP 586211		top of kerb
DISK 10 DP 586211		top of fence rail
DISK 11 DP 586211		in conc
IS XI DP 74397		in fpath
LP II DP 200701		in kerb
LP III DP 200701		in crossing
LP XXI DP 79496		top of kerb Geo Code: CNVX RL = 14.81 Auck. V.D. 1946
LP XXII DP 79495		top of kerb

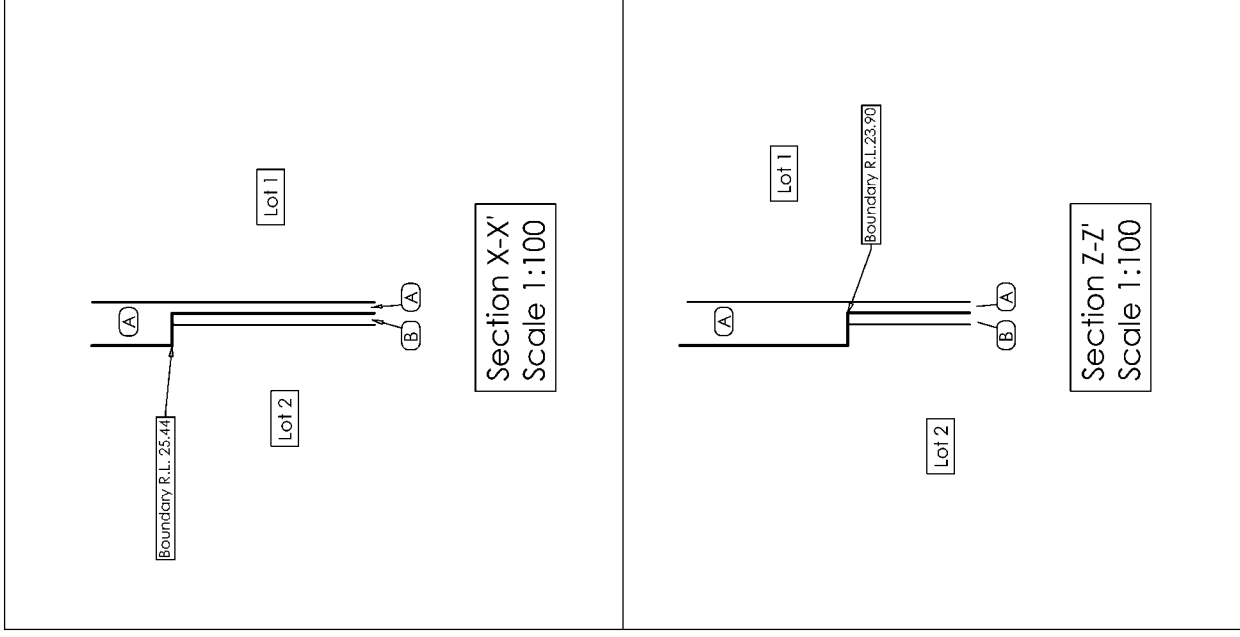
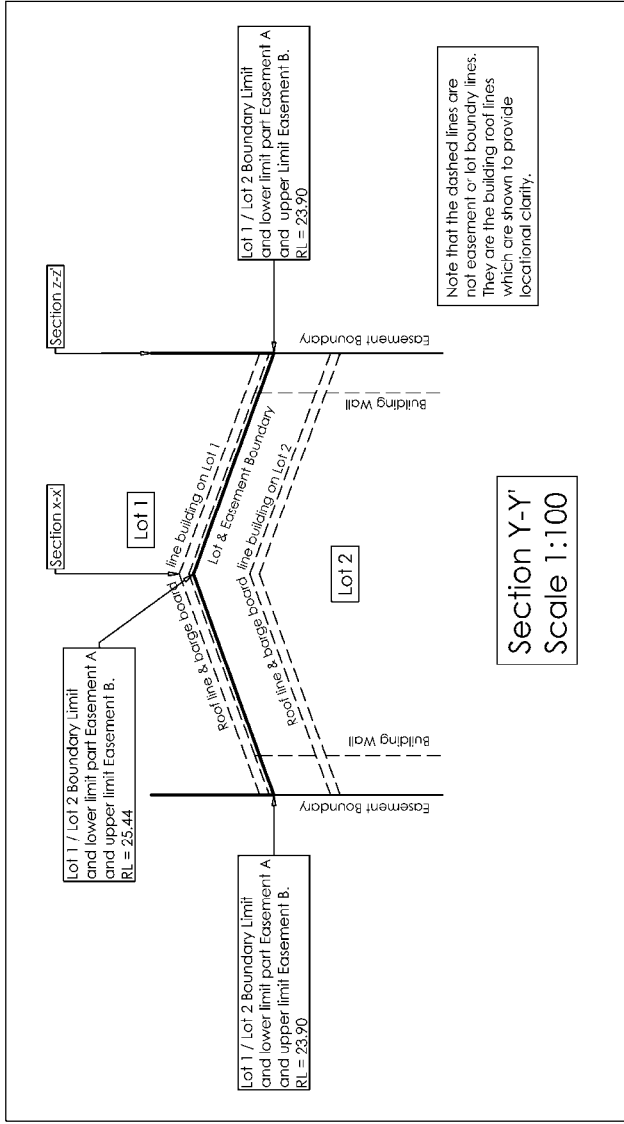


Mark and Vector

Survey Number DP 586211
Meridional Circuit Mount Eden 2000

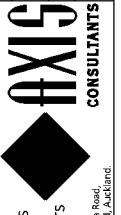
Mark Name	Mark Condition	Description
RM X DP 84479		in chan.
RM XII DP 84479		in chan.

*** End of Report ***



sheet 3 of 3

Surveyed by: RW	Date: 08/2022	PROJECT: DP 586211	PROJECT No: 22171
Drawn by: MH	Level datum is in terms of Auckland Vertical Datum 1954.	Resource Consent Managers Land Surveyors Land Development Engineers	DRAWING No: 643
Origin Mark- ition Level-	THIS PLAN HAS BEEN PREPARED SOLELY FOR THE CLIENT AND AXIS CONSULTANTS. IT IS NOT TO BE REPRODUCED WITHOUT WRITTEN PERMISSION OF AXIS CONSULTANTS LTD.	105 Melrose Road Birkenhead, Auckland.	ORIGINAL SCALE: A3 1:100
Contour Interval is:	THIS PLAN HAS BEEN PREPARED SOLELY FOR THE PURPOSE OF OBTAINING A RESOURCE CONSENT. ALL DIMENSIONS & AREAS ARE PROVISIONAL. DO NOT SCALE OFF PLAN. POSITIONS OF SERVICES TO BE VERIFIED PRIOR TO CONSTRUCTION.	REVISIONS	REV AMENDMENTS DATE



DP 586211
Cross Sections

LT 586211 Schedule/Memorandum

Land registration district
North Auckland

Territorial authority
Auckland Council

Memorandum of Easements

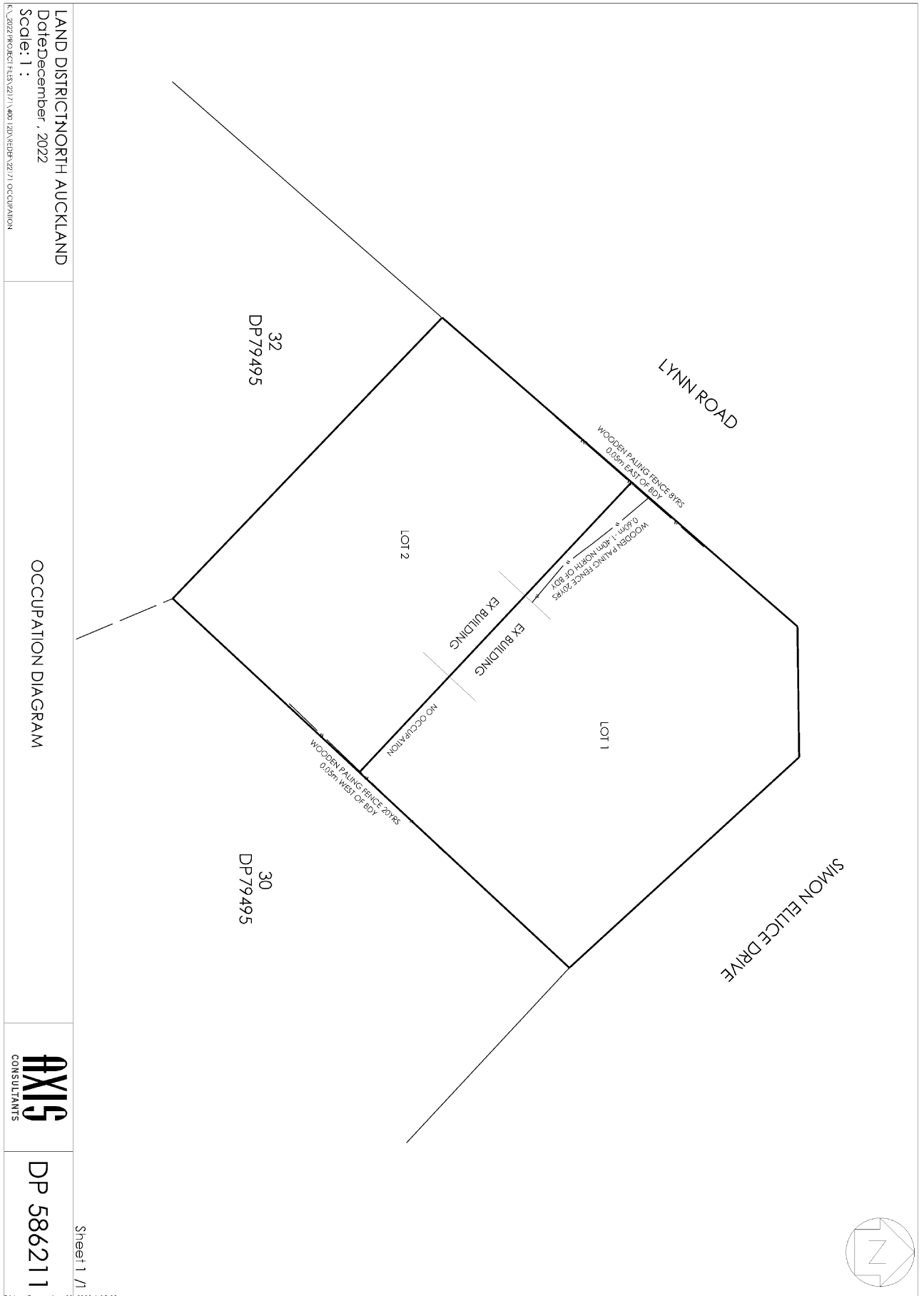
Parcels shown with a prefix of *HL*- include height-limited boundaries

PURPOSE	SHOWN	BURDENED LAND	BENEFITED LAND	UPPER LIMIT
Party wall	<i>HL-A</i>	HL Lot 1	HL Lot 2	-
" "	<i>HL-B</i>	HL Lot 2	HL Lot 1	-
Right to drain storm water	<i>HL-D</i>	HL Lot 2	HL Lot 1	17.90
Right to drain sewage	<i>HL-C</i>	HL Lot 2	HL Lot 1	17.90

Schedule of Easements

PURPOSE	SHOWN	BURDENED LAND	BENEFITED LAND
Maintenance	F	HL Lot 1	HL Lot 2

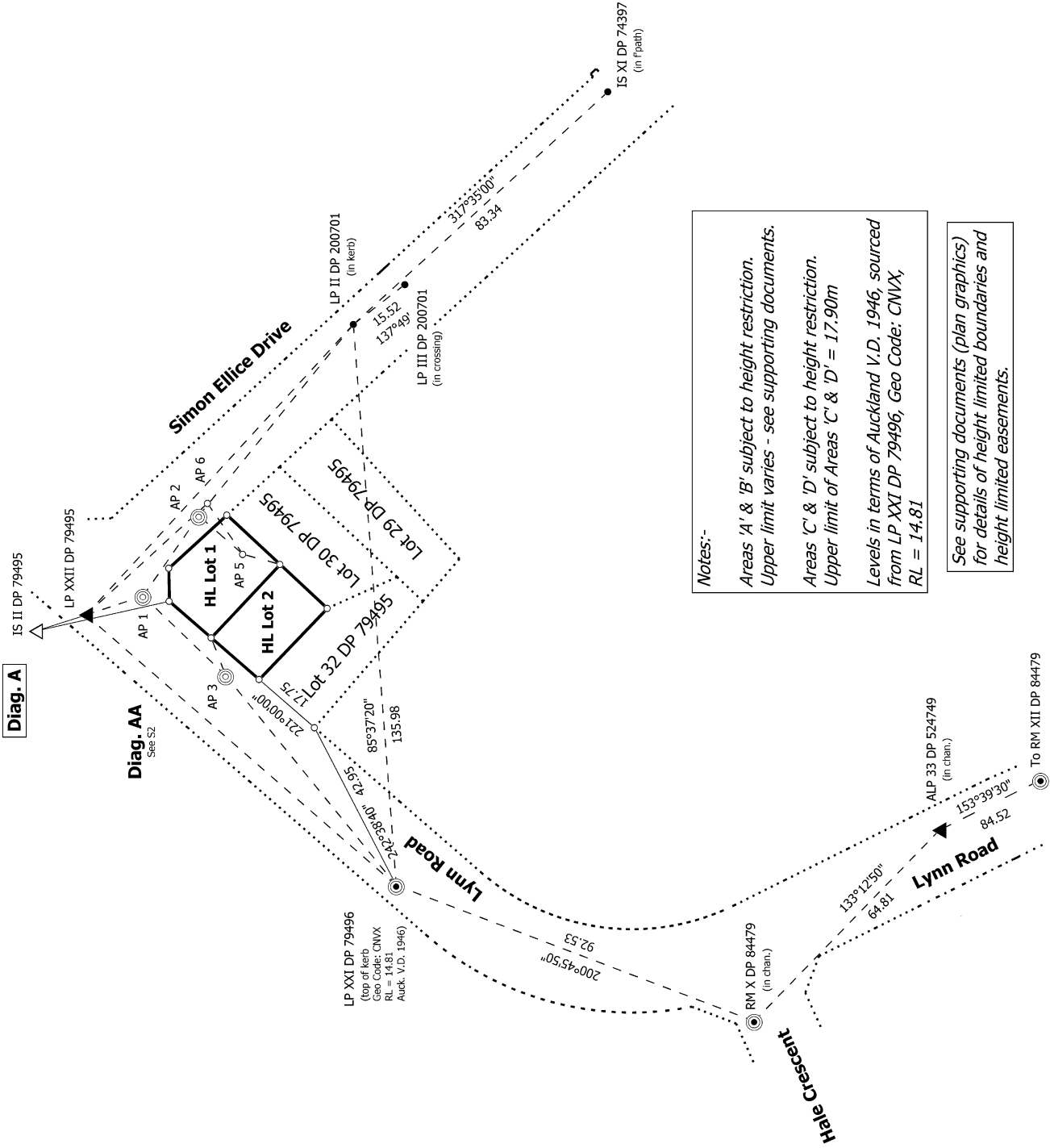
Occupation Diagram





Diag. A

Diag. AA
See S2



Notes:-

Areas 'A' & 'B' subject to height restriction.
Upper limit varies - see supporting documents.

Areas 'C' & 'D' subject to height restriction.
Upper limit of Areas 'C' & 'D' = 17.90m

Levels in terms of Auckland V.D. 1946, sourced from LP XXI DP 79496, Geo Code: CNWX,
RL = 14.81

See supporting documents (plan graphics) for details of height limited boundaries and height limited easements.

Job Ref: 22171

To RM XII DP 84479

S 1/2

Land District: North Auckland

Lots 1 and 2 Being a Subdivision of Lot 31 DP 79495

Surveyor: Kerry Gray Harford
Firm: Axis Consultants Ltd

Record of Survey
DP 586211

Digitally Generated Plan

Date of Survey: 23/12/2022

Deposited on: 23/01/2024



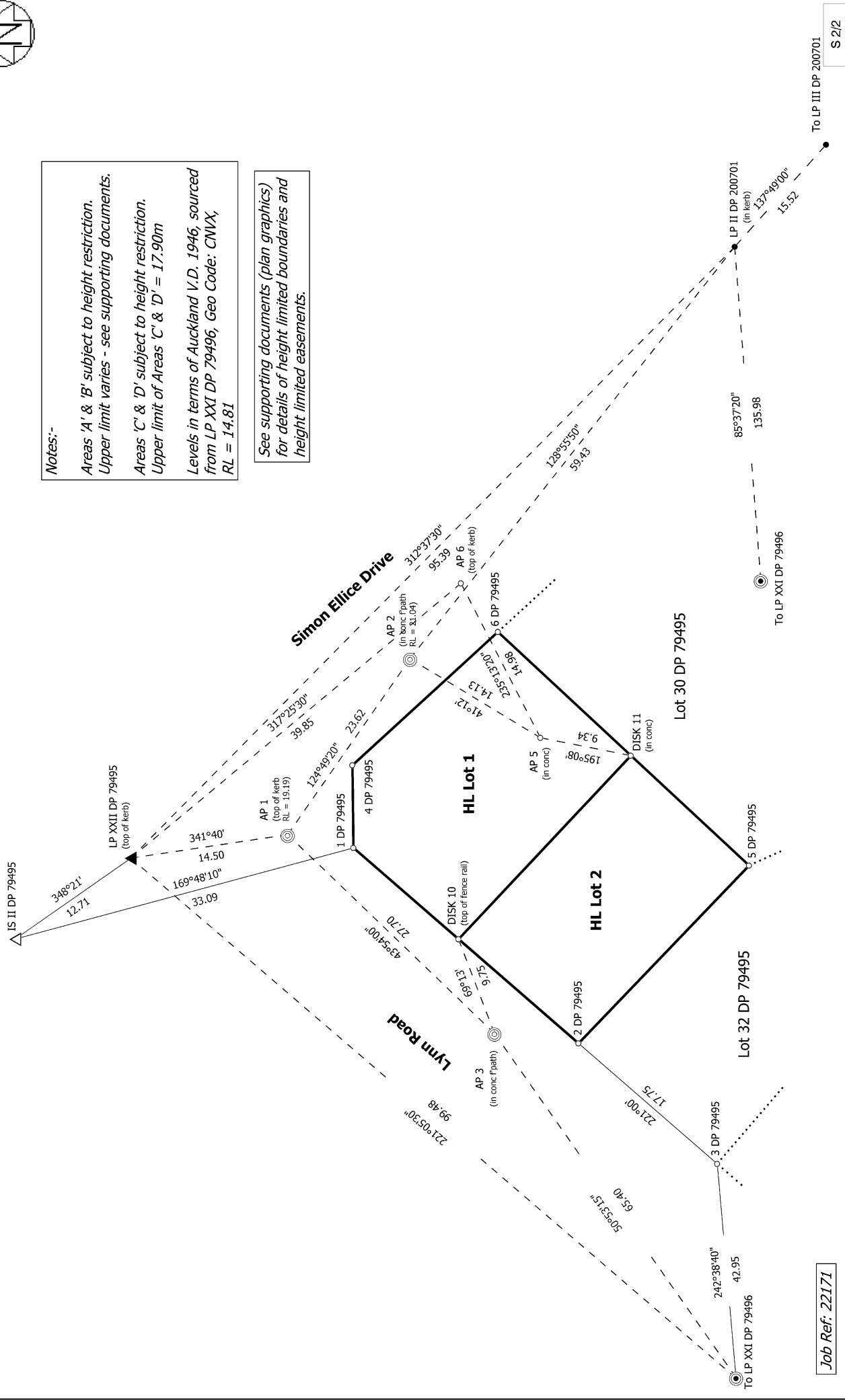
Diag. AA

Notes:-

Areas 'A' & 'B' subject to height restriction.
Upper limit varies - see supporting documents.
Areas 'C' & 'D' subject to height restriction.
Upper limit of Areas 'C' & 'D' = 17.90m

Levels in terms of Auckland V.D. 1946, sourced
from LP XXI DP 79496, Geo Code: CNVX,
RL = 14.81

See supporting documents (plan graphics)
for details of height limited boundaries and
height limited easements.



Job Ref: 22171

Land District: North Auckland

Digitally Generated Plan
Generated on: 16/02/2024 10:57:am Page 12 of 13

Lots 1 and 2 Being a Subdivision of Lot 31 DP 79495

Surveyor: Kerry Gray Harford
Firm: Axis Consultants Ltd
Date of Survey: 23/12/2022

Record of Survey
DP 586211

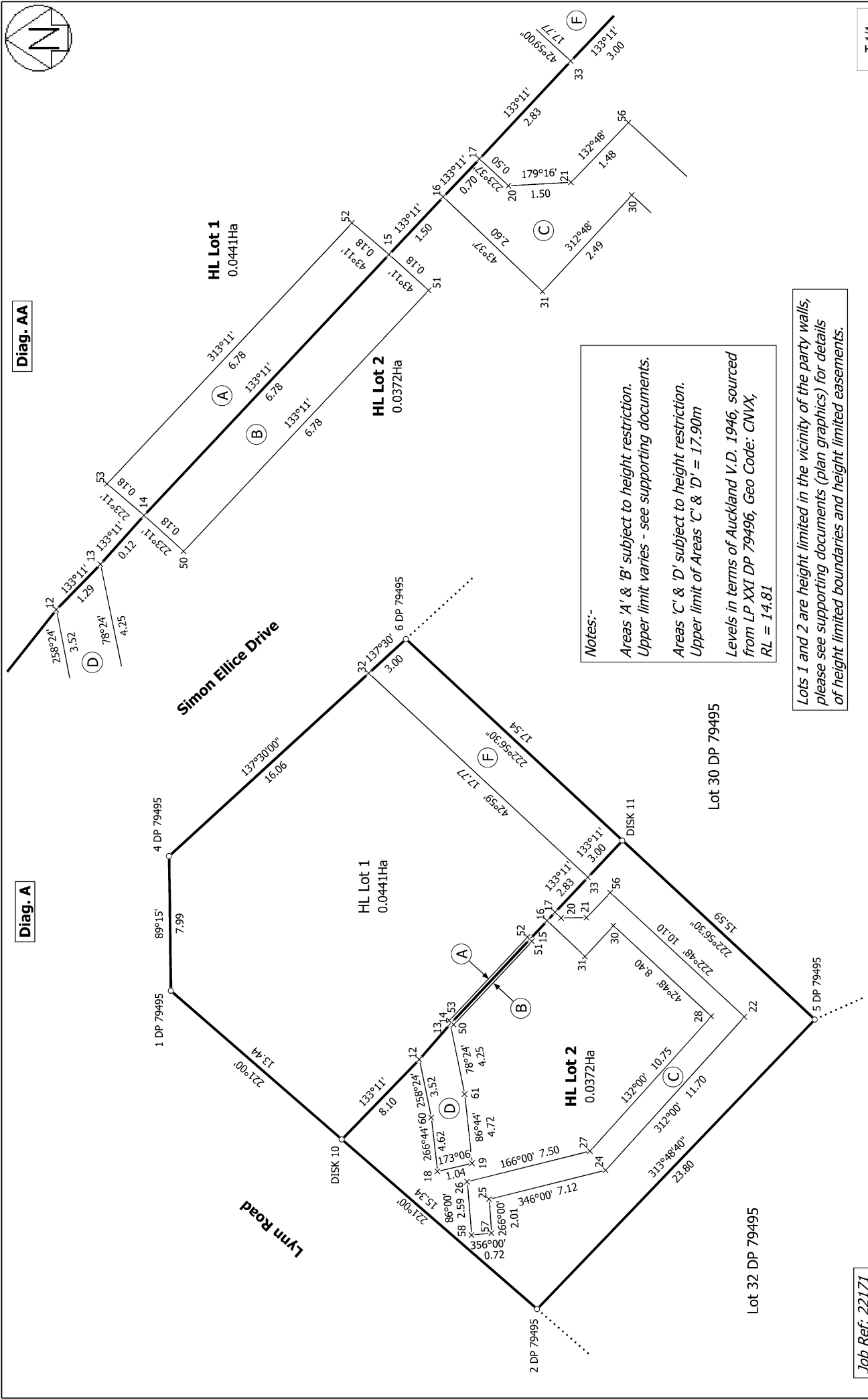
Deposited on: 23/01/2024

S 2/2



Diag. A

Diag. AA



Notes:-
 Areas 'A' & 'B' subject to height restriction.
 Upper limit varies - see supporting documents.
 Areas 'C' & 'D' subject to height restriction.
 Upper limit of Areas 'C' & 'D' = 17.90m
 Levels in terms of Auckland V.D. 1946, sourced from LP XXI DP 79496, Geo Code: CNIX, RL = 14.81

Lots 1 and 2 are height limited in the vicinity of the party walls, please see supporting documents (plan graphics) for details of height limited boundaries and height limited easements.

Job Ref: 22171

T 1/1

Land District: North Auckland

Lots 1 and 2 Being a Subdivision of Lot 31 DP 79495

Surveyor: Kerry Gray Harford
 Firm: Axis Consultants Ltd
 Date of Survey: 23/12/2022

Record of Survey
 DP 586211

Digitally Generated Plan
 Generated on: 16/02/2024 10:57:am Page 13 of 13

Deposited on: 23/01/2024