

Record of Survey - DP 586198

Survey Number	DP 586198
Surveyor Reference	8859 Orams Road
Surveyor	Jake Edwin McKenzie
Survey Firm	Barry Satchell Consultants Ltd (Auckland)
Surveyor Declaration	I Jake Edwin McKenzie, being a licensed cadastral surveyor, certify that-- (a) this dataset provided by me and its related survey are accurate, correct and in accordance with the Cadastral Survey Act 2002 and Cadastral Survey Rules 2021; and (b) the survey was undertaken by me or under my personal direction. Declared on 27 Mar 2023 03:23 PM

Survey Details

Dataset Description	Lots 1-6 Being a Subdivision of Part Clendons Grant		
Purpose	LT Subdivision		
Status	Deposited	Type	Survey
Land District	North Auckland	Survey Class	Class A
Meridional Circuit	Mount Eden 2000	Vertical Datum	None

Survey Dates

Surveyed Date	13/12/2022	Certified Date	27/03/2023
Submitted Date	27/03/2023 15:23:19	Survey Approval Date	28/03/2023
Deposit Date	20/06/2023		

Referenced Surveys

Survey Number	Land District	Bearing Correction
DP 43894	North Auckland	0°00'00"
DP 200602	North Auckland	0°00'00"
DP 309002	North Auckland	0°00'00"
DP 555525	North Auckland	0°00'00"

Territorial Authorities

Auckland Council

Comprised In

RT NA887/184 Ltd

Created Parcels

Parcels	Parcel Intent	Area	RT Reference
Area I Deposited Plan 586198	Easement		
Lot 1 Deposited Plan 586198	Fee Simple Title	0.0226 Ha	1109619
Lot 2 Deposited Plan 586198	Fee Simple Title	0.0160 Ha	1109620
Lot 3 Deposited Plan 586198	Fee Simple Title	0.0158 Ha	1109621
Lot 4 Deposited Plan 586198	Fee Simple Title	0.0157 Ha	1109622
Lot 5 Deposited Plan 586198	Fee Simple Title	0.0162 Ha	1109623
Lot 6 Deposited Plan 586198	Fee Simple Title	0.0161 Ha	Multiple
Area C Deposited Plan 586198	Easement		



Record of Survey - DP 586198

Created Parcels

Parcels	Parcel Intent	Area	RT Reference
Area D Deposited Plan 586198	Easement		
Area E Deposited Plan 586198	Easement		
Area F Deposited Plan 586198	Easement		
Area G Deposited Plan 586198	Easement		
Area H Deposited Plan 586198	Easement		
Area A Deposited Plan 586198	Easement		
Area B Deposited Plan 586198	Easement		
Total Area		<hr/> 0.1024 Ha	

Mark and Vector

Survey Number DP 586198

Meridional Circuit Mount Eden 2000

From	To	Code	Bearing	Adpt Surv	Bearing Correction	Distance	Adpt Surv	Class
RM 5577 SO 58040	MA 1 DP 555525	ob15	62°42'00"	M		17.36 M		
MA 1 DP 555525	MA 2 DP 555525	ob0	66°40'00"	A	DP 555525	15.55 A	DP 555525	
MA 2 DP 555525	MA 3 DP 555525	ob4	66°40'00"	A	DP 555525	20.11 A	DP 555525	
MA 3 DP 555525	CP 82D SO 58040	ob6	71°43'20"	A	DP 555525	108.05 A	DP 555525	
CP 82D SO 58040	AP III DP 200602	ob1	279°47'10"	A	DP 555525	112.41 A	DP 555525	
AP III DP 200602	RM 5577 SO 58040	ob10	208°02'30"	A	DP 555525	85.07 A	DP 555525	
RM 5577 SO 58040	RM 5581 SO 58040	ob16	157°08'55"	M		114.71 M		
RM 5577 SO 58040	SM 5572 SO 57853	ob17	240°21'35"	M		123.76 M		
RM 5577 SO 58040	AP 2 DP 586198	ob18	60°26'00"	M		8.92 M		
AP 2 DP 586198	AP 1 DP 586198	ob72	66°56'00"	M		18.97 M		
AP 1 DP 586198	CP 82D SO 58040	ob78	70°38'00"	M		133.10 M		
CP 82D SO 58040	RM 5577 SO 58040	ob2	249°37'55"	M		160.835 M		
RM 5577 SO 58040	AP I DP 200602	ob19	74°45'30"	A	DP 309002	79.32 A	DP 309002	
AP I DP 200602	AP III DP 200602	ob3	326°01'30"	A	DP 309002	65.38 A	DP 309002	
AP III DP 200602	AP V DP 200602	ob11	328°04'00"	A	DP 309002	47.77 A	DP 309002	
AP V DP 200602	AP I DP 309002	ob14	340°00'00"	A	DP 309002	6.08 A	DP 309002	
AP I DP 309002	AP II DP 309002	ob13	234°30'30"	A	DP 309002	32.76 A	DP 309002	
AP II DP 309002	AP III DP 309002	ob12	150°26'30"	A	DP 309002	33.63 A	DP 309002	
AP III DP 309002	IS IV DP 309002	ob9	231°27'00"	A	DP 309002	30.11 A	DP 309002	
IS IV DP 309002	RM 5577 SO 58040	ob8	158°54'00"	A	DP 309002	58.20 A	DP 309002	
RM 5577 SO 58040	DISK (35) DP 309002	ob20	39°07'00"	A	DP 309002	10.23 A	DP 309002	
DISK (35) DP 309002	PEG 21 DP 586198	ob29	333°20'30"	A	DP 309002	1.00 C		Class A
PEG 12 DP 586198	PEG 13 DP 586198	ob34	333°20'30"	A	DP 309002	8.47 C		Class A
PEG 13 DP 586198	PEG 14 DP 586198	ob36	333°20'30"	A	DP 309002	8.45 C		Class A
PEG 14 DP 586198	PEG 15 DP 586198	ob38	333°20'30"	A	DP 309002	8.56 C		Class A
PEG 15 DP 586198	DISK 20 DP 586198	ob40	333°20'30"	A	DP 309002	9.81 C		Class A

Mark and Vector

Survey Number DP 586198

Meridional Circuit Mount Eden 2000

From	To	Code	Bearing	Adpt Surv	Bearing Correction	Distance	Adpt Surv	Class
DISK 20 DP 586198	IS IV DP 309002	ob25	307°06'00"	A DP 309002	0°00'00"	8.35 A	DP 309002	
MA 2 DP 555525	ABD 17 DP 555525	ob5	321°42'00"	A DP 555525	0°00'00"	3.50 A	DP 555525	
PEG 22 DP 586198	PEG XVA DP 43894	ob89	331°51'30"	A DP 43894	0°00'00"	0.50 C		Class A
PEG XVA DP 43894	PEG (51) DP 309002	ob27	67°52'00"	A DP 43894	0°00'00"	9.60 A	DP 555525	
PEG (51) DP 309002	AP III DP 309002	ob7	314°40'00"	A DP 309002	0°00'00"	17.06 A	DP 309002	
UNMK 41 DP 586198	DISK 10 DP 586198	ob87	67°04'00"	A DP 43894	0°00'00"	7.00 C		Class A
DISK 10 DP 586198	ABD 17 DP 555525	ob31	67°04'00"	A DP 43894	0°00'00"	3.59 C		Class A
DISK 20 DP 586198	UNMK 38 DP 586198	ob26	67°52'00"	A DP 309002	0°00'00"	18.22 C		Class A
UNMK 38 DP 586198	PEG XVA DP 43894	ob32	67°52'00"	A DP 309002	0°00'00"	3.51 C		Class A
UNMK 38 DP 586198	DISK 11 DP 586198	ob33	151°51'30"	C		0.50 C		Class A
UNMK 43 DP 586198	DISK 16 DP 586198	ob42	151°51'30"	C		2.40 C		Class A
DISK 16 DP 586198	UNMK 37 DP 586198	ob43	151°51'30"	C		2.28 C		Class A
UNMK 37 DP 586198	DISK 17 DP 586198	ob44	151°51'30"	C		6.20 C		Class A
DISK 17 DP 586198	UNMK 44 DP 586198	ob45	151°51'30"	C		6.09 C		Class A
UNMK 44 DP 586198	DISK 18 DP 586198	ob46	151°51'30"	C		2.39 C		Class A
DISK 18 DP 586198	UNMK 23 DP 586198	ob47	151°51'30"	C		2.34 C		Class A
UNMK 23 DP 586198	DISK 19 DP 586198	ob48	151°51'30"	C		6.11 C		Class A
UNMK 42 DP 586198	DISK 10 DP 586198	ob88	152°14'00"	C		7.24 C		Class A
PEG 12 DP 586198	DISK 19 DP 586198	ob35	61°51'30"	C		19.03 C		Class A
PEG 13 DP 586198	UNMK 32 DP 586198	ob37	61°56'00"	C		2.50 C		Class A
UNMK 32 DP 586198	UNMK 25 DP 586198	ob63	61°56'00"	C		11.54 C		Class A
UNMK 25 DP 586198	DISK 18 DP 586198	ob50	61°56'00"	C		4.77 C		Class A
PEG 14 DP 586198	DISK 17 DP 586198	ob39	61°50'00"	C		18.59 C		Class A
PEG 15 DP 586198	UNMK 27 DP 586198	ob41	62°05'00"	C		2.13 C		Class A

Mark and Vector

Survey Number DP 586198

Meridional Circuit Mount Eden 2000

From	To	Code	Bearing	Adpt Surv	Bearing Correction	Distance	Adpt Surv	Class
UNMK 27 DP 586198	UNMK 26 DP 586198	ob56	62°05'00"	C		11.56 C		Class A
UNMK 26 DP 586198	DISK 16 DP 586198	ob53	62°05'00"	C		4.68 C		Class A
UNMK 26 DP 586198	UNMK 43 DP 586198	ob54	34°52'00"	C		5.25 C		Class A
UNMK 26 DP 586198	UNMK 37 DP 586198	ob55	88°03'00"	C		5.21 C		Class A
UNMK 25 DP 586198	UNMK 44 DP 586198	ob51	35°16'00"	C		5.33 C		Class A
UNMK 25 DP 586198	UNMK 23 DP 586198	ob52	88°06'00"	C		5.31 C		Class A
UNMK 27 DP 586198	UNMK 28 DP 586198	ob57	332°05'00"	C		0.25 C		Class A
UNMK 28 DP 586198	UNMK 29 DP 586198	ob59	62°05'00"	C		11.56 C		Class A
UNMK 29 DP 586198	UNMK 26 DP 586198	ob60	152°05'00"	C		0.25 C		Class A
UNMK 27 DP 586198	UNMK 30 DP 586198	ob58	152°05'00"	C		0.25 C		Class A
UNMK 30 DP 586198	UNMK 31 DP 586198	ob61	62°05'00"	C		11.56 C		Class A
UNMK 31 DP 586198	UNMK 26 DP 586198	ob62	332°05'00"	C		0.25 C		Class A
UNMK 32 DP 586198	UNMK 33 DP 586198	ob64	331°56'00"	C		0.25 C		Class A
UNMK 33 DP 586198	UNMK 34 DP 586198	ob66	61°56'00"	C		11.54 C		Class A
UNMK 34 DP 586198	UNMK 25 DP 586198	ob67	151°56'00"	C		0.25 C		Class A
UNMK 32 DP 586198	UNMK 39 DP 586198	ob65	151°56'00"	C		0.25 C		Class A
UNMK 39 DP 586198	UNMK 40 DP 586198	ob68	61°56'00"	C		11.54 C		Class A
UNMK 40 DP 586198	UNMK 25 DP 586198	ob69	331°56'00"	C		0.25 C		Class A
AP 2 DP 586198	PEG 12 DP 586198	ob73	334°58'00"	M		14.69 M		
AP 2 DP 586198	PEG 13 DP 586198	ob74	334°22'00"	M		23.16 M		
AP 2 DP 586198	PEG 14 DP 586198	ob75	334°06'00"	M		31.62 M		
AP 2 DP 586198	PEG 15 DP 586198	ob76	333°56'00"	M		40.18 M		
AP 1 DP 586198	DISK 10 DP 586198	ob79	344°53'00"	M		3.76 M		
AP 1 DP 586198	DISK 19 DP 586198	ob80	335°07'00"	M		16.37 M		

Mark and Vector

Survey Number DP 586198

Meridional Circuit Mount Eden 2000

From	To	Code	Bearing	Adpt Surv	Bearing Correction	Distance	Adpt Surv	Class
AP 1 DP 586198	DISK 18 DP 586198	ob81	334°01'00" M			24.81 M		
AP 1 DP 586198	DISK 17 DP 586198	ob82	333°28'00" M			33.29 M		
AP 1 DP 586198	DISK 16 DP 586198	ob83	333°08'00" M			41.76 M		
AP 1 DP 586198	DISK 11 DP 586198	ob84	332°56'30" M			49.24 M		
AP 1 DP 586198	ABD 17 DP 555525	ob85	24°48'00" M			5.55 M		
DISK (35) DP 309002	UNMK 41 DP 586198	ob28	67°04'00" A	DP 43894	0°00'00"	12.30 C		Class A
DISK 19 DP 586198	UNMK 42 DP 586198	ob49	152°14'00" C			5.44 C		Class A
UNMK 41 DP 586198	UNMK 42 DP 586198	ob86	18°35'00" C			9.64 C		Class A
ABD 17 DP 555525	PEG 22 DP 586198	ob30	331°51'30" A	DP 43894	0°00'00"	45.52 C		Class A
PEG 21 DP 586198	PEG 12 DP 586198	ob90	333°20'30" A	DP 309002	0°00'00"	9.94 C		Class A
DISK 11 DP 586198	UNMK 43 DP 586198	ob91	151°51'30" C			5.08 C		Class A
AP 2 DP 586198	DISK 20 DP 586198	ob70	333°49'00" M			49.99 M		
AP 1 DP 586198	PEG 22 DP 586198	ob77	337°02'00" M			49.07 M		
AP 2 DP 586198	PEG 21 DP 586198	ob71	338°24'00" M			4.77 M		
SM 5572 SO 57853	AP 2 DP 586198	ob21	60°22'00" M			132.67 M		
SM 5572 SO 57853	AP 1 DP 586198	ob22	61°11'00" M			151.53 M		
SM 5572 SO 57853	RN I DP 206110	ob23	338°17'00" M			95.90 M		
SM 5572 SO 57853	AP 1 DP 485445	ob24	148°18'45" M			71.78 M		

Mark Name	Mark Condition	Description
AP I DP 309002		Aluminium Plug
AP II DP 309002		Aluminium Plug
AP III DP 200602		Aluminium Plug
AP III DP 309002		Aluminium Plug
AP V DP 200602		Aluminium Plug
DISK 11 DP 586198		0.10m South of Fence
DISK 16 DP 586198		3.50m West of Fence

Mark and Vector

Survey Number DP 586198
Meridional Circuit Mount Eden 2000

Mark Name	Mark Condition	Description
DISK 17 DP 586198		3.50m West of Fence
DISK 18 DP 586198		3.57m West of Fence
DISK 19 DP 586198		3.57m West of Fence
DISK 20 DP 586198		0.16m West of Fence
MA 1 DP 555525		in f/path
MA 2 DP 555525		in f/path
MA 3 DP 555525		in f/path
PEG 12 DP 586198		0.05m West of Fence
PEG 13 DP 586198		0.10m West of Fence
PEG 14 DP 586198		0.10m West of Fence
PEG 15 DP 586198		0.10m West of Fence
PEG 21 DP 586198		Base of Fence
RM 5577 SO 58040		Plaque in channel
RM 5581 SO 58040		Plaque in channel
SM 5572 SO 57853		plaque under iron cover
AP I DP 200602	Searched For and Not Found	Aluminium Plug
DISK (35) DP 309002	Searched For and Not Found	
PEG XVA DP 43894	Searched For and Not Found	

***** End of Report *****

Schedule / Memorandum

Land Registration District

North Auckland

Survey Number

LT 586198

Territorial Authority (the Council)

Auckland Council

Memorandum of Easements

Last Edited: 16 Dec 2022 15:00:08

<u>Purpose</u>	<u>Shown</u>	<u>Burdened Land</u> (<u>Servient Tenement</u>)	<u>Benefited Land</u> (<u>Dominant Tenement</u>)
Right of Way	Lot 6	Lot 6	Lot 1, Lot 2, Lot 3, Lot 4, Lot 5
	A	Lot 2	Lot 3
	B	Lot 3	Lot 2
	C	Lot 4	Lot 5
	D	Lot 5	Lot 4
Right to convey electricity, gas, telecommunications, water	I	Lot 1	Lot 2, Lot 3, Lot 4, Lot 5
	Lot 6	Lot 6	Lot 1, Lot 2, Lot 3, Lot 4, Lot 5
Right to drain sewage, water	Lot 6	Lot 6	Lot 1, Lot 2, Lot 3, Lot 4, Lot 5
Party wall	E	Lot 2	Lot 3
	F	Lot 3	Lot 2
	G	Lot 4	Lot 5
	H	Lot 5	Lot 4

Memorandum of Easements in Gross

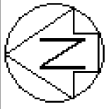
Last Edited: 10 Jan 2023 10:01:22

<u>Purpose</u>	<u>Shown</u>	<u>Burdened Land</u> (<u>Servient Tenement</u>)	<u>Grantee</u>
Right to convey telecommunications	Lot 6	Lot 6	Chorus New Zealand Limited
	I	Lot 1	Chorus New Zealand Limited

Amalgamation Conditions

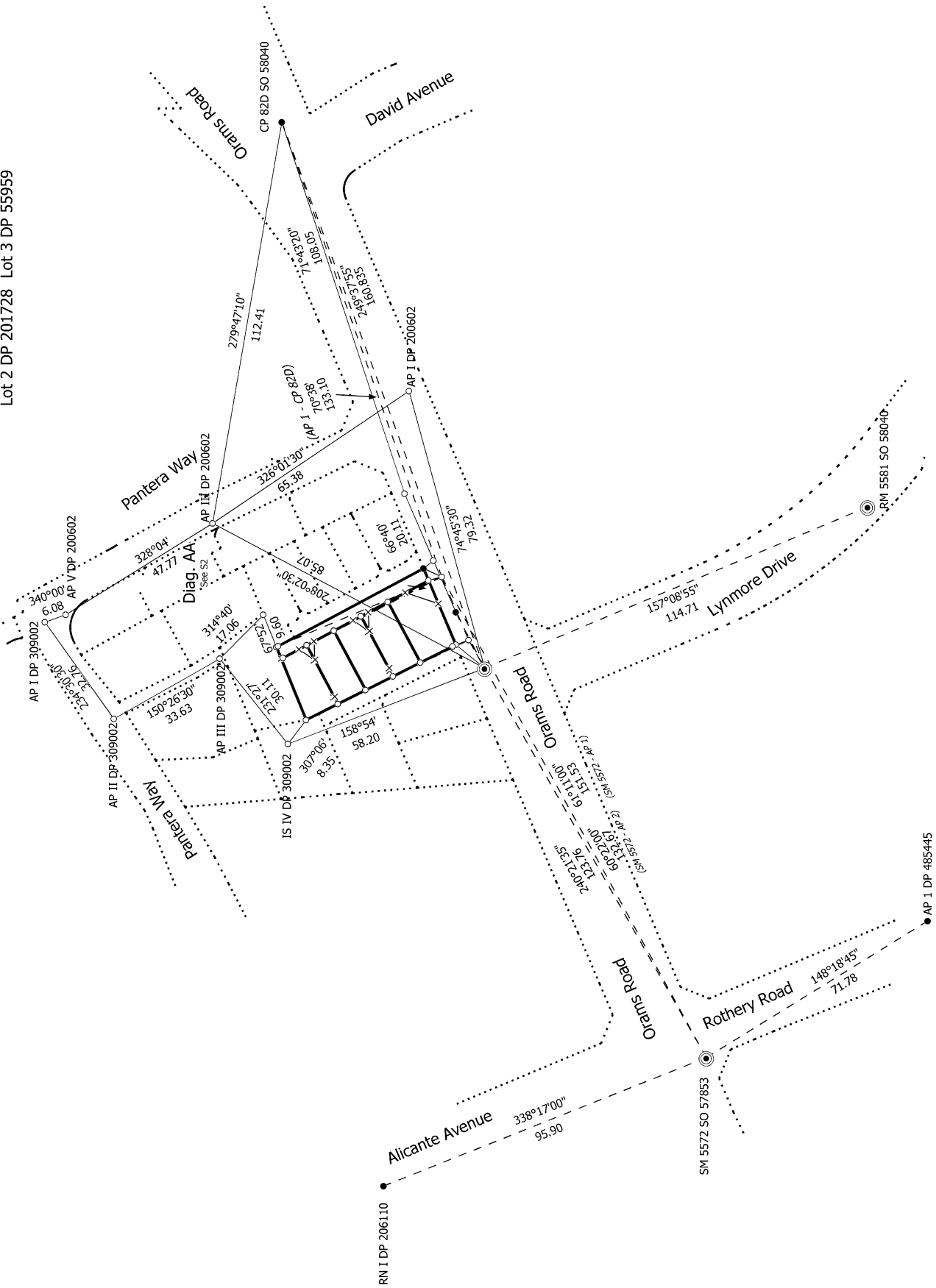
Last Edited: 10 Jan 2023 08:59:40

That Lot 6 hereon be held as to five undivided one-fifth shares by the owners of Lots 1-5 hereon as tenants in common in the said shares and that the individual Records of Title be issued in accordance therewith.



Lot 2 DP 201728 Lot 3 DP 55959

Diag. A



S 1/3

Land District: North Auckland

Digitally Generated Plan

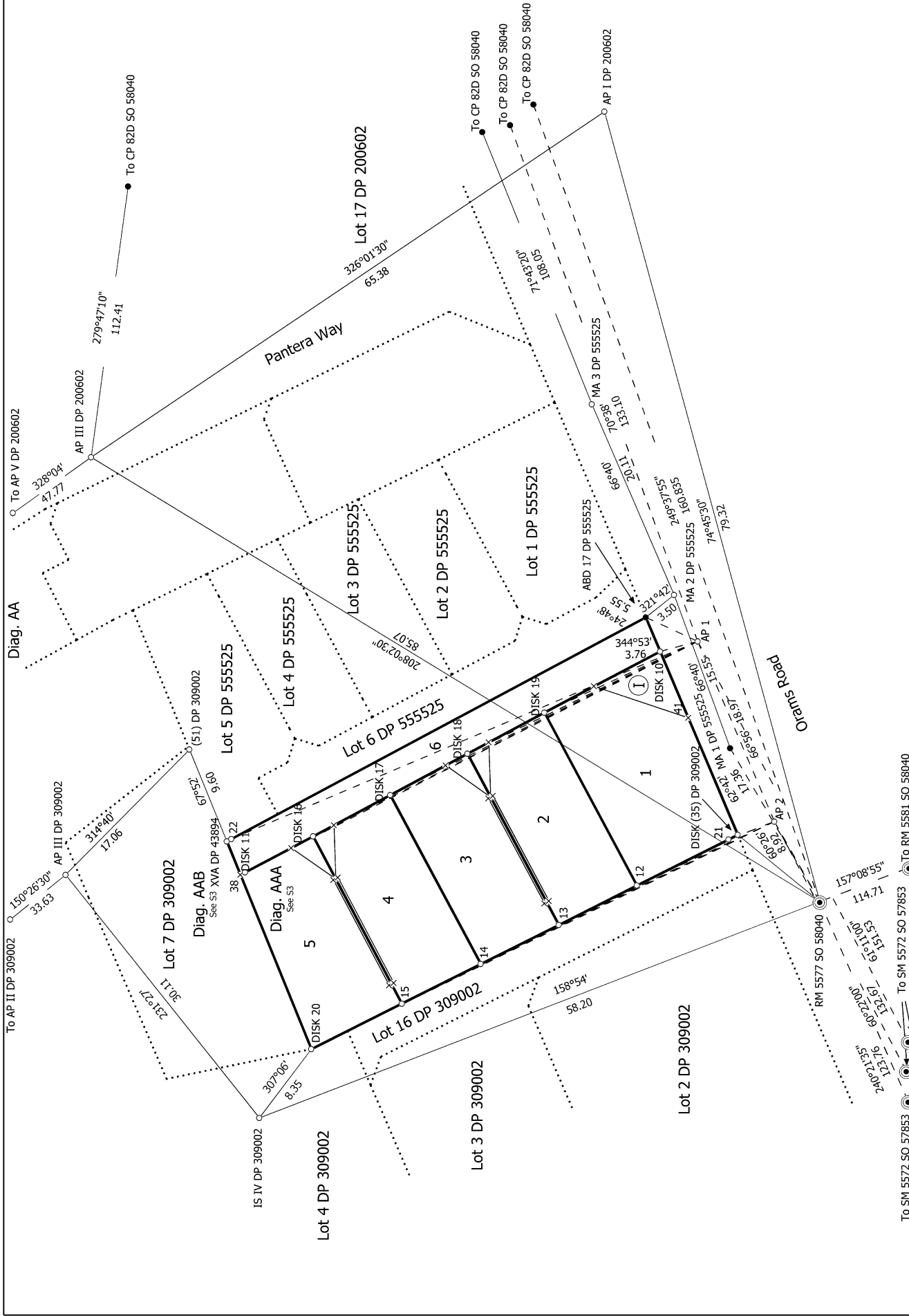
Generated on: 12/07/2023 09:51 am | Page 10 of 13

Lots 1-6 Being a Subdivision of Part Clendons Grant

Surveyor: Jake Edwin McKenzie
Firm: Barry Satchell Consultants Ltd (Auck)
Date of Survey: 13/12/2022

Record of Survey
DP 586198

Deposited on: 20/06/2023



S 2/3

Record of Survey
 DP 586198
 Deposited on: 20/06/2023

Surveyor: Jake Edwin McKenzie
 Firm: Barry Satchell Consultants Ltd (Auck)
 Date of Survey: 13/12/2022

Lots 1-6 Being a Subdivision of Part Clendons Grant

Land District: North Auckland
Digitally Generated Plan
 Generated on: 12/07/2023 09:51:am Page 11 of 13

