



# Record of Survey - DP 585316

---

<b>Survey Number</b>	DP 585316
<b>Surveyor Reference</b>	21146 - 679 Hillsborough Road, Mt Roskill
<b>Surveyor</b>	Nicola Jane Harnett
<b>Survey Firm</b>	KW Consultants Limited
<b>Surveyor Declaration</b>	I Nicola Jane Harnett, being a licensed cadastral surveyor, certify that-- (a) this dataset provided by me and its related survey are accurate, correct and in accordance with the Cadastral Survey Act 2002 and Cadastral Survey Rules 2021; and (b) the survey was undertaken by me or under my personal direction. Declared on 10 Feb 2023 09:33 AM

---

## Survey Details

<b>Dataset Description</b>	Lots 1-3 Being a Subdivision of Lot 1 DP 410914		
<b>Purpose</b>	LT Subdivision		
<b>Status</b>	Deposited	<b>Type</b>	Survey
<b>Land District</b>	North Auckland	<b>Survey Class</b>	Class A
<b>Meridional Circuit</b>	Mount Eden 2000	<b>Vertical Datum</b>	Auckland 1946

---

## Survey Dates

<b>Surveyed Date</b>	28/10/2022	<b>Certified Date</b>	10/02/2023
<b>Submitted Date</b>	10/02/2023 09:33:23	<b>Survey Approval Date</b>	07/03/2023
<b>Deposit Date</b>	04/03/2024		

---

## Referenced Surveys

Survey Number	Land District	Bearing Correction
DP 185023	North Auckland	0°00'00"
LT 389904	North Auckland	
DP 512687	North Auckland	
DP 458167	North Auckland	

---

## Territorial Authorities

Auckland Council

---

## Comprised In

RT 440714

---

## Created Parcels

Parcels	Parcel Intent	Area	RT Reference
Height-Limited Lot 1 Deposited Plan 585316	Fee Simple Title	0.0130 Ha	1103385
Height-Limited Lot 2 Deposited Plan 585316	Fee Simple Title	0.0248 Ha	1103386
Height-Limited Lot 3 Deposited Plan 585316	Fee Simple Title	0.0110 Ha	Multiple
Height-Limited Area A Deposited Plan 585316	Easement		
Area I Deposited Plan 585316	Easement		
Area E Deposited Plan 585316	Easement		
Area F Deposited Plan 585316	Easement		
<b>Total Area</b>		<b>0.0488 Ha</b>	

---

# Mark and Vector

Survey Number DP 585316

Meridional Circuit Mount Eden 2000

From	To	Code	Bearing	Adpt Surv	Bearing Correction	Distance	Adpt Surv	Class
SM 4318 SO 54423	IS 3 LT 389904	ob0	75°25'20"	M		55.34 M		
IS 3 LT 389904	ALP 1 LT 389904	ob5	236°27'20"	A LT 389904	0°00'00"	30.36 A	LT 389904	
ALP 1 LT 389904	SM 4318 SO 54423	ob6	275°44'00"	A LT 389904	0°00'00"	28.38 A	LT 389904	
SM 4318 SO 54423	AP 1 DP 584746	ob1	52°14'00"	M		31.46 M		
AP 1 DP 584746	IS 3 LT 389904	ob7	100°32'00"	M		29.17 M		
AP 1 DP 584746	AP 1 DP 512687	ob8	219°12'15"	M		14.47 M		
AP 1 DP 512687	SM 4318 SO 54423	ob47	242°53'00"	M		17.67 M		
SM 4318 SO 54423	AP C DP 458167	ob2	50°41'00"	M		16.53 M		
AP C DP 458167	AP 1 DP 584746	ob48	53°58'00"	M		14.95 M		
SM 4318 SO 54423	PEG 12 LT 389904	ob3	54°10'00"	M		30.93 M		
PEG 12 LT 389904	IS I DP 185023	ob25	224°31'00"	A LT 389904	0°00'00"	12.42 A	LT 389904	
IS I DP 185023	SM 4318 SO 54423	ob28	240°30'30"	A DP 185023	0°00'00"	18.79 A	DP 185023	
AP C DP 458167	AP 1 DP 512687	ob49	129°28'00"	M		3.81 M		
SM 4318 SO 54423	DISK 1 LT 389904	ob4	89°38'00"	M		29.40 M		
DISK 1 LT 389904	ALP 1 LT 389904	ob29	200°48'30"	A LT 389904	0°00'00"	3.25 A	LT 389904	
PEG 12 LT 389904	PEG (1) DP 41559	ob26	222°15'00"	A LT 389904	0°00'00"	10.34 A	LT 389904	Class A
PEG (1) DP 41559	PEG 14 LT 389904	ob31	132°15'00"	A LT 389904	0°00'00"	1.64 A	LT 389904	Class A
PEG 14 LT 389904	PEG 10 DP 585316	ob32	132°15'00"	A LT 389904	0°00'00"	1.38 C		Class A
PEG 10 DP 585316	DISK 1 LT 389904	ob34	132°15'00"	A LT 389904	0°00'00"	12.22 C		Class A
PEG 12 LT 389904	PEG 11 DP 585316	ob27	42°15'00"	A LT 389904	0°00'00"	13.67 C		Class A
PEG 11 DP 585316	ABD 12 DP 585316	ob36	42°15'00"	A LT 389904	0°00'00"	1.75 C		Class A
ABD 12 DP 585316	DISK 4 LT 389904	ob37	132°15'00"	A LT 389904	0°00'00"	1.66 A	LT 389904	Class A
DISK 4 LT 389904	DISK 5 LT 389904	ob38	42°15'00"	A LT 389904	0°00'00"	1.00 A	LT 389904	Class A
DISK 5 LT 389904	IS 3 LT 389904	ob40	133°11'00"	M		22.22 M		
DISK 1 LT 389904	PEG 15 DP 585316	ob30	55°48'30"	A LT 389904	0°00'00"	11.01 C		Class A

# Mark and Vector

Survey Number DP 585316

Meridional Circuit Mount Eden 2000

From	To	Code	Bearing	Adpt Surv	Bearing Correction	Distance	Adpt Surv	Class
PEG 15 DP 585316	UNMK 35 DP 585316	ob42	55°48'30"	A LT 389904	0°00'00"	1.13 C		Class A
UNMK 35 DP 585316	PEG 16 DP 585316	ob65	55°48'30"	A LT 389904	0°00'00"	14.36 C		Class A
PEG 16 DP 585316	IS 3 LT 389904	ob43	117°31'40"	M		2.51 M		
DISK 5 LT 389904	DISK 6 LT 389904	ob41	132°15'00"	A LT 389904	0°00'00"	12.80 A	LT 389904	Class A
DISK 6 LT 389904	DISK 7 LT 389904	ob44	222°15'00"	A LT 389904	0°00'00"	1.00 A	LT 389904	Class A
DISK 7 LT 389904	UNMK (C) LT 389904	ob45	132°15'00"	A LT 389904	0°00'00"	5.00 A	LT 389904	Class A
UNMK (C) LT 389904	PEG 16 DP 585316	ob46	132°15'00"	A LT 389904	0°00'00"	1.99 A	LT 389904	Class A
PEG 10 DP 585316	PEG 22 DP 585316	ob35	42°15'00"	C		2.57 C		Class A
PEG 22 DP 585316	PEG 23 DP 585316	ob50	62°03'00"	C		1.96 C		Class A
PEG 23 DP 585316	PEG 24 DP 585316	ob51	85°42'00"	C		1.57 C		Class A
PEG 24 DP 585316	PEG 25 DP 585316	ob52	100°11'00"	C		1.36 C		Class A
PEG 25 DP 585316	PEG 26 DP 585316	ob53	42°15'00"	C		3.28 C		Class A
PEG 26 DP 585316	PEG 27 DP 585316	ob54	346°26'00"	C		1.96 C		Class A
PEG 27 DP 585316	PEG 28 DP 585316	ob55	96°30'00"	C		2.01 C		Class A
PEG 28 DP 585316	PEG 29 DP 585316	ob57	42°15'00"	C		5.60 C		Class A
PEG 29 DP 585316	PEG 30 DP 585316	ob59	344°39'00"	C		1.59 C		Class A
PEG 30 DP 585316	PEG 31 DP 585316	ob60	2°44'00"	C		1.52 C		Class A
PEG 31 DP 585316	PEG 32 DP 585316	ob61	23°30'00"	C		1.90 C		Class A
PEG 32 DP 585316	PEG 33 DP 585316	ob62	42°15'00"	C		2.76 C		Class A
PEG 33 DP 585316	PEG 11 DP 585316	ob63	312°15'00"	C		3.00 C		Class A
PEG 27 DP 585316	PEG 15 DP 585316	ob56	132°03'00"	C		13.53 C		Class A
PEG 14 LT 389904	PEG 13 LT 389904	ob33	42°15'00"	C		7.00 C		Class A
PEG 13 LT 389904	PEG 12 LT 389904	ob64	16°05'00"	C		3.72 C		Class A
DISK 4 LT 389904	DISK 7 LT 389904	ob39	132°15'00"	C		12.80 C		Class A

# Mark and Vector

Survey Number DP 585316

Meridional Circuit Mount Eden 2000

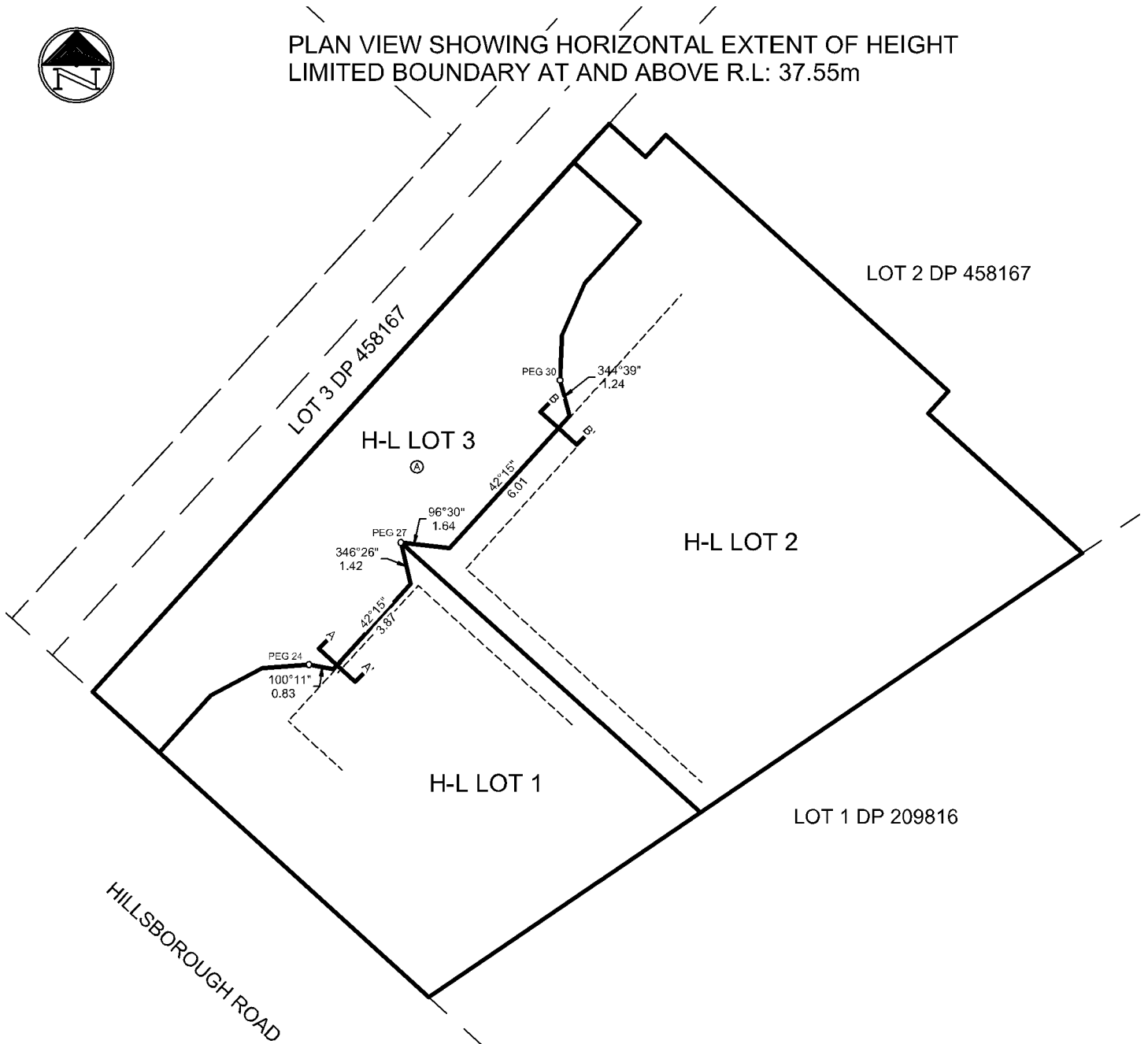
From	To	Code	Bearing	Adpt Surv	Bearing Correction	Distance	Adpt Surv	Class
AP 1 DP 584746	PEG 11 DP 585316	ob9	46°22'00" M			12.98 M		
AP 1 DP 584746	ABD 12 DP 585316	ob10	45°53'00" M			14.73 M		
AP 1 DP 584746	PEG 33 DP 585316	ob11	59°09'00" M			13.53 M		
AP 1 DP 584746	PEG 32 DP 585316	ob12	63°21'00" M			10.92 M		
AP 1 DP 584746	PEG 31 DP 585316	ob13	70°42'00" M			9.54 M		
AP 1 DP 584746	PEG 30 DP 585316	ob14	79°37'00" M			9.08 M		
AP 1 DP 584746	PEG 29 DP 585316	ob15	89°23'00" M			9.35 M		
AP 1 DP 584746	PEG 28 DP 585316	ob16	125°54'00" M			6.90 M		
AP 1 DP 584746	PEG 27 DP 585316	ob17	136°46'00" M			5.24 M		
AP 1 DP 584746	PEG 25 DP 585316	ob18	167°15'00" M			8.36 M		
AP 1 DP 584746	PEG 24 DP 585316	ob19	176°21'00" M			7.93 M		
AP 1 DP 584746	PEG 23 DP 585316	ob20	187°31'00" M			8.10 M		
AP 1 DP 584746	PEG 22 DP 585316	ob21	197°20'00" M			9.37 M		
AP 1 DP 584746	PEG 10 DP 585316	ob22	202°37'00" M			11.75 M		
AP 1 DP 584746	PEG 15 DP 585316	ob23	133°22'00" M			18.76 M		
PEG 28 DP 585316	UNMK 35 DP 585316	ob58	132°23'00" C			12.17 C		Class A
AP 1 DP 584746	PEG 26 DP 585316	ob24	144°43'00" M			7.01 M		

Mark Name	Mark Condition	Description
AP 1 DP 512687		flush in vehicle entry
AP 1 DP 584746		flush in concrete driveway; R.L: 34.45m
AP C DP 458167		flush in vehicle entry; R.L : 34.43m
IS 3 LT 389904		0.1m down in drain
SM 4318 SO 54423		under iron cast lid in berm; R.L:34.49m
ALP 1 LT 389904	Destroyed	

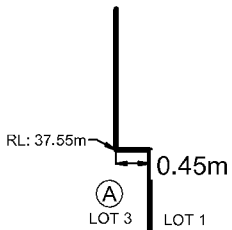
\*\*\* End of Report \*\*\*



PLAN VIEW SHOWING HORIZONTAL EXTENT OF HEIGHT LIMITED BOUNDARY AT AND ABOVE R.L.: 37.55m

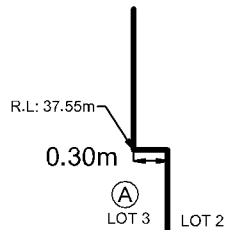


**SECTION A-A'**



NOTE: DIAGRAM NOT TO SCALE

**SECTION B-B'**



NOTE: DIAGRAM NOT TO SCALE

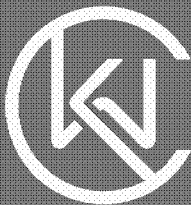
NOTES:

- VERTICAL DATUM: AUCKLAND 1946
- ORIGIN OF LEVELS: SM 4318 SO 64423 (CH25) RL: 34.49m
- EAVE/ GUTTER SHOWN FOR CONTEXT ONLY
- SEE RoS FOR PRM R.L.'s

KEY:

- OUTER EXTENT OF EAVES/GUTTER
- PRIMARY BOUNDARY
- ABUTALS

Surveying +  
Subdivision  
Specialists



HELLO@KWCCONSULTANTS.CO.NZ  
WWW.KWCCONSULTANTS.CO.NZ

Address:

679 HILLSBOROUGH RD  
MOUNT ROSKILL  
AUCKLAND

Legal Description:

DP 585316

Drawing Name:

HL PARCEL DIAGRAM

Revision: 0

Date: 28-Oct-22

# Description:

Date:

Job Number:

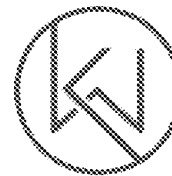
21146

Drawn / Surveyed: JOL

Checked: JW

Sheet: 1:200  
Scale @ A3:

1020



Land Registration District

North Auckland

Plan Number

DP 585316

Territorial Authority

Auckland Council (SUB60372266)

## Memorandum of Easements

Purpose	Shown	Burdened Land (Servient Tenement)	Benefited Land (Dominant Tenement)
Right of Way Right to Convey Water Right to Drain Water Right to Drain Sewage	A, & I	Lot 3	Lots 1-2
Right to Drain Water	F	Lot 2	Lot 3

## Schedule of Easements in Gross

Purpose	Shown	Burdened Land (Servient Tenement)	Grantee
Right to Convey Telecommunications	A, & I	Lot 3	Chorus New Zealand Ltd

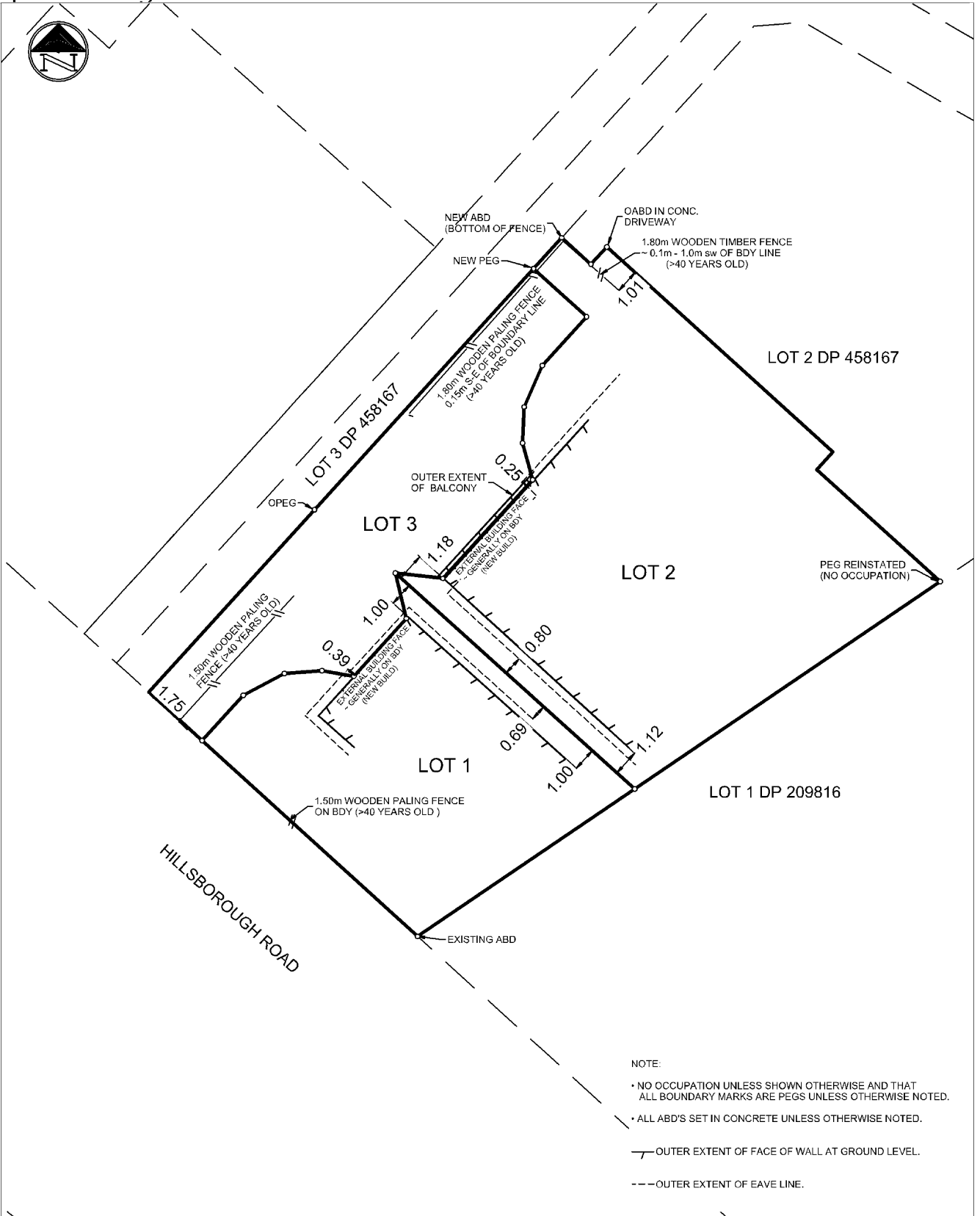
## Schedule of Existing Easements

Purpose	Shown	Burdened Land (Servient Tenement)	Creating Document
Right of Way	I	Lot 3	Easement Certificate 7998899.2
Right of Way	E	Lot 2	Easement Certificate 7998899.2
Right to Convey Electricity	I	Lot 3	Easement Certificate 9295026.2 9295026.3

## Amalgamations

THAT LOT 3 HEREON (LEGAL ACCESS) BE HELD AS TO TWO (2) UNDIVIDED ONE-HALF SHARES BY THE OWNERS OF LOTS 1-2 AS TENANTS IN COMMON IN THE SAID SHARES AND THAT INDIVIDUAL RECORDS OF TITLE BE ISSUED IN ACCORDANCE THEREWITHIN.

# Occupation Diagram



NOTE:

- NO OCCUPATION UNLESS SHOWN OTHERWISE AND THAT ALL BOUNDARY MARKS ARE PEGS UNLESS OTHERWISE NOTED.
- ALL ABD'S SET IN CONCRETE UNLESS OTHERWISE NOTED.

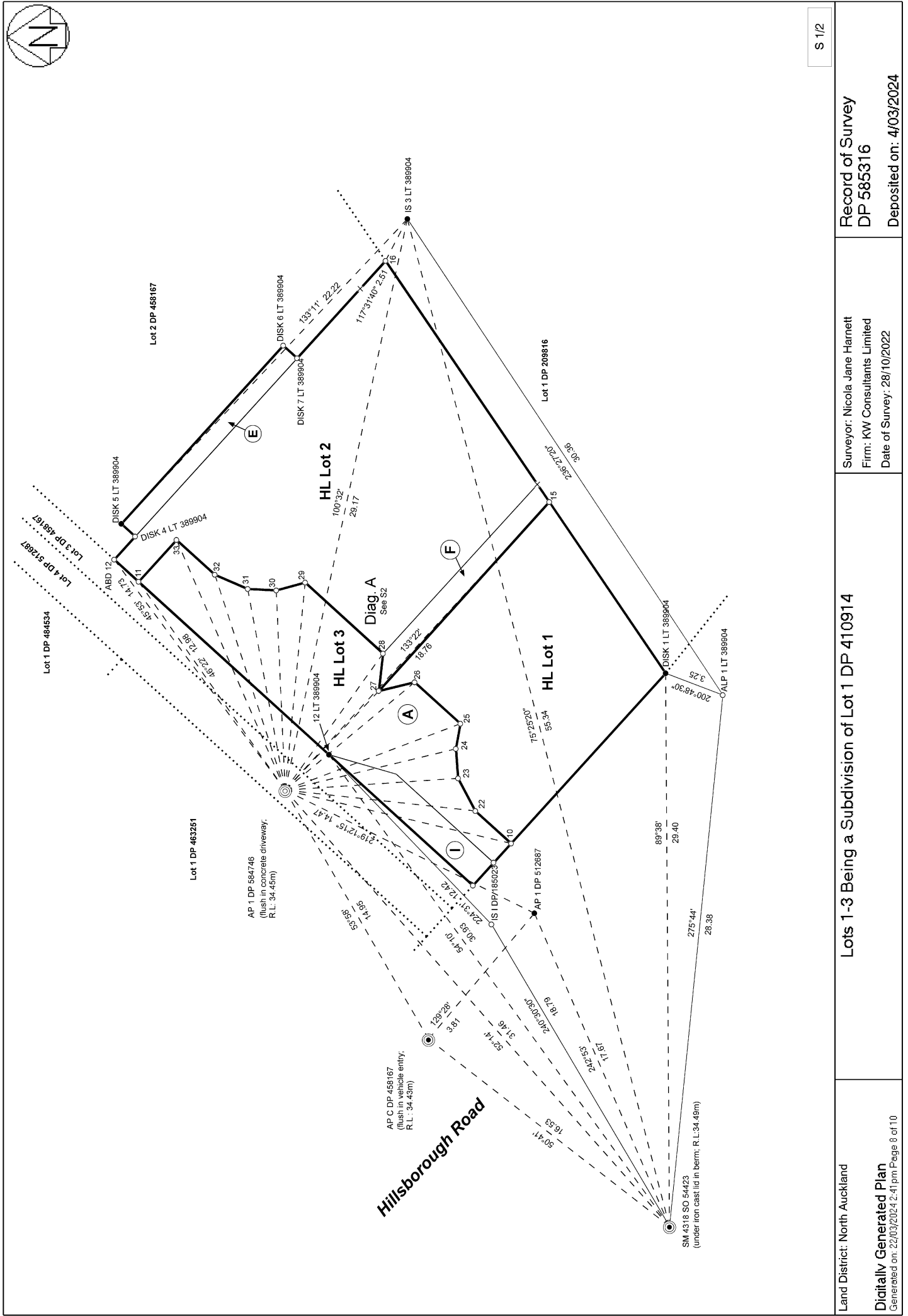
— OUTER EXTENT OF FACE OF WALL AT GROUND LEVEL.  
 - - - OUTER EXTENT OF EAVE LINE.

**Surveying +  
Subdivision  
Specialists**

HELLOS@KWCCONSULTANTS.CO.NZ  
WWW.KWCCONSULTANTS.CO.NZ

Address: <b>679 HILLSBOROUGH RD MOUNT ROSKILL AUCKLAND</b>	Drawing Name: <b>OCCUPATION DIAGRAM</b>	Job Number: <b>21146</b>
Legal Description: <b>DP 585316</b>	Revision: 0      Date: 28-Oct-22	Drawn / Surveyed: <b>JOL</b>
	# Description:      Date:	Checked: <b>JW</b>
		Sheet:      Scale @ A3:
		<b>1020      NTS</b>

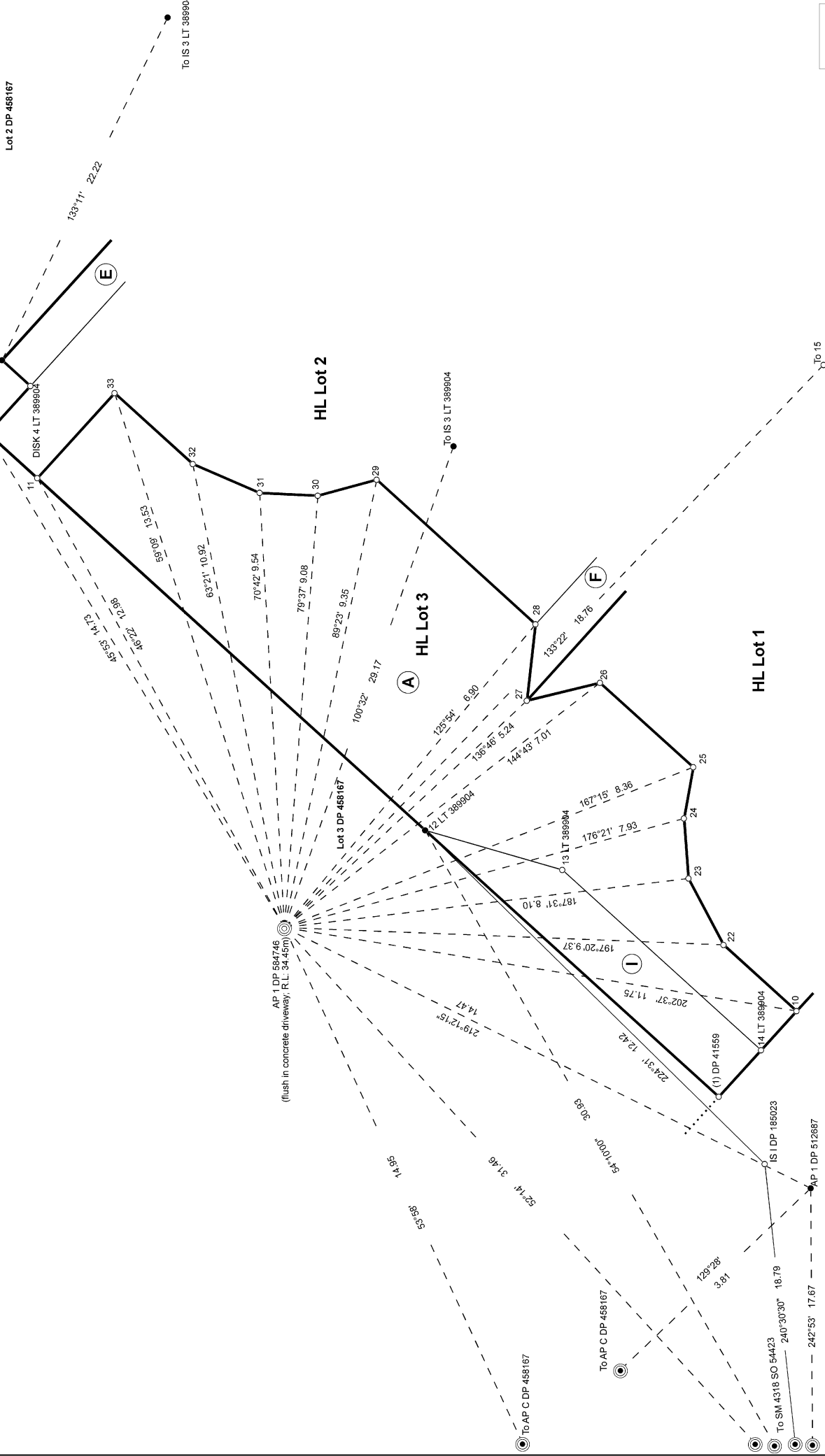
PLOT FILE: c:\2\5\data\DESKTOP-AFO81JD\21146-679 Hillsborough Road, Mount Roskill\_2030503 Surveying\21146 Working V15.12\mrcel, PLOTTED: Wed Jan 25 15:17:31 2023







Diag. A

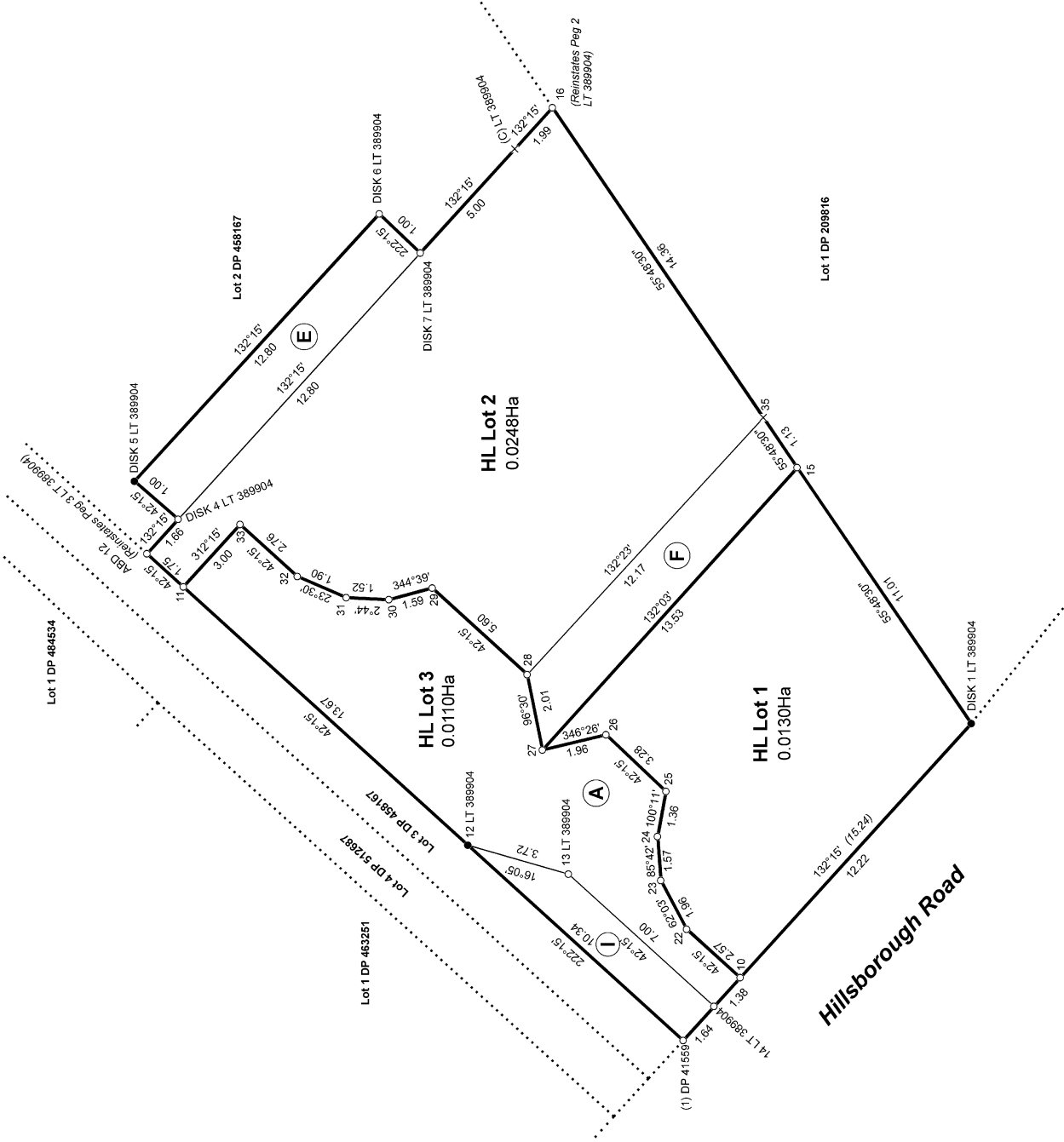
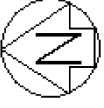


S 2/2

Lots 1-3 Being a Subdivision of Lot 1 DP 410914

Surveyor: Nicola Jane Harnett  
 Firm: KW Consultants Limited  
 Date of Survey: 28/10/2022

Record of Survey  
 DP 585316  
 Deposited on: 4/03/2024



T 1/1