

# Record of Survey - DP 585288

**Survey Number** DP 585288  
**Surveyor Reference** 227599  
**Surveyor** Nicholas Roger Hope Wakefield  
**Survey Firm** The Surveying Company (Hastings)  
**Surveyor Declaration** I Nicholas Roger Hope Wakefield, being a licensed cadastral surveyor, certify that--  
 (a) this dataset provided by me and its related survey are accurate, correct and in accordance with the Cadastral Survey Act 2002 and Cadastral Survey Rules 2021; and  
 (b) the survey was undertaken by me or under my personal direction.  
 Declared on 04 May 2023 12:01 PM

## Survey Details

**Dataset Description** Lots 1- 3 being a subdivision of Lots 1 & 4 DP 21951  
**Purpose** LT Subdivision  
**Status** Deposited **Type** Survey  
**Land District** Hawkes Bay **Survey Class** Class B  
**Meridional Circuit** Hawkes Bay 2000 **Vertical Datum** None

## Survey Dates

**Surveyed Date** 29/11/2022 **Certified Date** 04/05/2023  
**Submitted Date** 04/05/2023 12:01:11 **Survey Approval Date** 15/05/2023  
**Deposit Date** 24/03/2023

## Referenced Surveys

Survey Number	Land District	Bearing Correction
DP 21007	Hawkes Bay	0°00'00"
DP 21951	Hawkes Bay	0°00'00"
SO 2989	Hawkes Bay	0°00'00"
SO 4543	Hawkes Bay	0°00'00"
SO 3046	Hawkes Bay	0°00'00"
SO 1037	Hawkes Bay	0°00'00"
DP 547752	Hawkes Bay	0°00'00"
DP 562049	Hawkes Bay	0°00'00"
DP 7556	Hawkes Bay	0°00'00"

## Territorial Authorities

Central Hawke's Bay District

## Comprised In

RT 841869

## Created Parcels

Parcels	Parcel Intent	Area	RT Reference
Lot 1 Deposited Plan 585288	Fee Simple Title	206.5400 Ha	1103304
Lot 2 Deposited Plan 585288	Fee Simple Title	24.7500 Ha	1103305
Lot 3 Deposited Plan 585288	Fee Simple Title	7.3720 Ha	1103306



# Record of Survey - DP 585288

---

## Created Parcels

Parcels	Parcel Intent	Area	RT Reference
Area A Deposited Plan 585288	Easement		
Area B Deposited Plan 585288	Easement		
Area C Deposited Plan 585288	Easement		
Area D Deposited Plan 585288	Easement		
Area E Deposited Plan 585288	Easement		
Area F Deposited Plan 585288	Easement		
Area G Deposited Plan 585288	Easement		
Area H Deposited Plan 585288	Easement		
Area I Deposited Plan 585288	Easement		
Area J Deposited Plan 585288	Easement		
<b>Total Area</b>		<hr/> 238.6620 Ha	

# Mark and Vector

Survey Number DP 585288  
 Meridional Circuit Hawkes Bay 2000

From	To	Code	Bearing	Adpt Surv	Bearing Correction	Distance	Adpt Surv	Class
XIX A SO 4543	XXII SO 4543	ob0	330°44'00" M			1,068.28 M		
XXII SO 4543	IT L SO 3046	ob7	305°36'16" M			1,363.63 M		
IT L SO 3046	IT 1 DP 585288	ob10	157°00'53" M			1,527.67 M		
IT 1 DP 585288	IT 2 DP 585288	ob12	106°12'32" M			677.68 M		
IT 2 DP 585288	XIX A SO 4543	ob28	108°45'15" M			405.18 M		
IT 2 DP 585288	IS V SO 2989	ob29	347°46'20" M			339.97 M		
IS V SO 2989	IS IIIA SO 2989	ob54	329°42'00" M			98.00 M		
IS IIIA SO 2989	IT 1 DP 585288	ob60	246°43'20" M			576.20 M		
IT 2 DP 585288	XX SO 4543	ob30	3°16'10" M			231.79 M		
XX SO 4543	IS A SO 2989	ob42	351°39'00" M			21.92 M		
IS A SO 2989	XXII SO 4543	ob45	344°50'25" M			568.33 M		
IS A SO 2989	IS V SO 2989	ob46	313°58'30" M			114.00 M		
IT 1 DP 585288	IT VII DP 21951	ob13	272°15'40" M			686.21 M		
IT VII DP 21951	PEG (3) DP 21951	ob122	195°49'30" M			126.08 M		
PEG (3) DP 21951	IS IV SO 3046	ob123	134°46'15" M			844.05 M		
IS IV SO 3046	IS IF SO 3046	ob126	74°05'20" M			891.11 M		
IS IF SO 3046	XIX A SO 4543	ob128	67°16'20" M			323.39 M		
IS IV SO 3046	IT III SO 3046	ob127	74°02'20" M			127.92 M		
IT III SO 3046	IT 1 DP 585288	ob138	359°48'40" M			653.47 M		
IT 2 DP 585288	IS IF SO 3046	ob31	161°30'00" M			269.11 M		
IS V SO 2989	POST IVA SO 2989	ob55	321°45'20" A	SO 2989	0°00'00"	61.66 A	SO 2989	
POST IVA SO 2989	IS IV SO 2989	ob63	321°45'20" A	SO 2989	0°00'00"	6.90 A	SO 2989	
IS IV SO 2989	IS IIIA SO 2989	ob64	347°11'00" A	SO 2989	0°00'00"	31.56 A	SO 2989	
IS A SO 2989	XXI SO 4543	ob47	289°39'20" A	SO 2989	0°00'00"	155.08 A	SO 2989	
XXI SO 4543	XXII SO 4543	ob53	359°42'05" A	SO 4543	0°00'00"	496.42 A	SO 4543	
XX SO 4543	XXI SO 4543	ob43	296°19'35" A	SO 4543	0°00'00"	166.49 A	SO 4543	
XIX A SO 4543	IS A SO 2989	ob1	315°44'00" A	SO 3046	0°00'00"	535.33 A	SO 3046	
XIX A SO 4543	XX SO 4543	ob2	314°18'39" A	SO 4543	0°00'00"	517.76 A	SO 4543	
XIX A SO 4543	PEG (4) SO 3046	ob3	249°55'00" M			3.98 M		
IS A SO 2989	PEG (38) SO 2989	ob48	130°53'30" M			15.09 M		
IS A SO 2989	PEG (36) SO 2989	ob49	186°15'00" A	SO 2989	0°00'00"	24.40 A	SO 2989	
PEG (38) SO 2989	PEG (37) SO 2989	ob9	215°06'30" A	SO 2989	0°00'00"	20.36 A	SO 2989	
IS V SO 2989	PEG (41) SO 2989	ob56	230°33'30" M			18.04 M		
IS V SO 2989	PEG (42) SO 2989	ob57	279°43'30" M			29.77 M		

# Mark and Vector

Survey Number DP 585288

Meridional Circuit Hawkes Bay 2000

From	To	Code	Bearing	Adpt Surv	Bearing Correction	Distance	Adpt Surv	Class
IS IIIA SO 2989	PEG (44) SO 2989	ob61	220°32'00"	A SO 2989	0°00'00"	23.56 A	SO 2989	
IS IIIA SO 2989	PEG (45) SO 2989	ob62	284°26'30"	M		21.93 M		
PEG (45) SO 2989	PEG (44) SO 2989	ob70	165°49'00"	A SO 2989	0°00'00"	24.10 A	SO 2989	Class B
PEG (44) SO 2989	PEG 43 DP 585288	ob69	150°08'30"	A SO 2989	0°00'00"	20.17 C		Class B
PEG 43 DP 585288	PEG (42) SO 2989	ob79	150°08'30"	A SO 2989	0°00'00"	50.94 C		Class B
PEG (42) SO 2989	PEG (41) SO 2989	ob68	136°59'00"	A SO 2989	0°00'00"	22.57 A	SO 2989	Class B
PEG (41) SO 2989	UNMK 40 DP 585288	ob67	134°34'30"	A SO 2989	0°00'00"	1.42 C		Class B
UNMK 40 DP 585288	UNMK 39 DP 585288	ob182	134°34'30"	A SO 2989	0°00'00"	10.09 C		Class B
UNMK 133 DP 585288	POST 35 DP 585288	ob240	134°34'30"	A SO 2989	0°00'00"	17.83 C		Class B
POST 35 DP 585288	PEG (36) SO 2989	ob78	134°34'30"	A SO 2989	0°00'00"	20.03 C		Class B
PEG (36) SO 2989	PEG (37) SO 2989	ob65	134°04'00"	A SO 2989	0°00'00"	3.26 A	SO 2989	Class B
PEG 11 DP 585288	PEG (4) SO 3046	ob76	134°03'30"	A SO 3046	0°00'00"	46.54 C		Class B
PEG (3) DP 21951	IT VIII DP 21951	ob124	277°44'30"	A DP 21951	0°00'00"	130.58 A	DP 21951	
IT VIII DP 21951	IT IX DP 21951	ob75	319°22'00"	A DP 21951	0°00'00"	213.48 A	DP 21951	
IT IX DP 21951	IT LVI SO 3046	ob140	316°34'30"	A DP 21951	0°00'00"	106.13 A	DP 21951	
IT LVI SO 3046	IT LV SO 3046	ob141	14°08'40"	A SO 3046	0°00'00"	624.59 A	SO 3046	
IT LV SO 3046	IS LIV SO 3046	ob143	14°09'00"	A SO 3046	0°00'00"	57.21 A	SO 3046	
IS LIV SO 3046	IS LIII SO 3046	ob144	13°46'00"	A SO 3046	0°00'00"	181.67 A	SO 3046	
IS LIII SO 3046	IS LII SO 3046	ob145	31°00'30"	A SO 3046	0°00'00"	191.33 A	SO 3046	
IS LII SO 3046	POST SO 3046	ob146	99°10'00"	A SO 3046	0°00'00"	20.70 A	SO 3046	
POST SO 3046	IS LI SO 3046	ob147	53°04'30"	A SO 3046	0°00'00"	18.63 A	SO 3046	
IS LI SO 3046	IT L SO 3046	ob148	27°20'00"	A SO 3046	0°00'00"	263.95 A	SO 3046	
XXII SO 4543	XXII A SO 4543	ob8	302°37'37"	A SO 4543	0°00'00"	154.84 A	SO 4543	
XXII A SO 4543	XXIII SO 4545	ob73	302°37'37"	A SO 4543	0°00'00"	897.85 A	SO 4543	
XXIII SO 4545	IT L SO 3046	ob74	315°32'05"	A DP 562049	0°00'00"	317.16 A	DP 562049	
PEG 11 DP 585288	POST 12 DP 585288	ob77	222°02'00"	C		6.42 C		Class B
POST 12 DP 585288	POST 13 DP 585288	ob80	213°16'00"	C		47.48 C		Class B
POST 13 DP 585288	POST 14 DP 585288	ob81	247°54'00"	C		18.14 C		Class B
POST 14 DP 585288	POST 15 DP 585288	ob82	274°48'00"	C		32.39 C		Class B

# Mark and Vector

Survey Number DP 585288

Meridional Circuit Hawkes Bay 2000

From	To	Code	Bearing	Adpt Surv	Bearing Correction	Distance	Adpt Surv	Class
POST 15 DP 585288	POST 16 DP 585288	ob83	254°05'00"	C		54.27 C		Class B
POST 16 DP 585288	POST 17 DP 585288	ob84	271°33'00"	C		27.44 C		Class B
POST 17 DP 585288	POST 18 DP 585288	ob85	280°51'00"	C		33.97 C		Class B
POST 18 DP 585288	POST 19 DP 585288	ob86	296°21'00"	C		20.62 C		Class B
POST 19 DP 585288	POST 20 DP 585288	ob87	309°36'00"	C		18.84 C		Class B
POST 20 DP 585288	POST 21 DP 585288	ob88	327°29'00"	C		27.25 C		Class B
POST 21 DP 585288	POST 22 DP 585288	ob89	303°46'00"	C		40.91 C		Class B
POST 22 DP 585288	POST 23 DP 585288	ob90	280°05'00"	C		89.38 C		Class B
POST 23 DP 585288	UNMK 24 DP 585288	ob91	331°48'00"	C		63.45 C		Class B
UNMK 24 DP 585288	POST 25 DP 585288	ob175	331°48'00"	C		3.53 C		Class B
POST 25 DP 585288	POST 26 DP 585288	ob92	2°00'00"	C		8.49 C		Class B
POST 26 DP 585288	POST 27 DP 585288	ob94	37°49'00"	C		34.46 C		Class B
POST 27 DP 585288	POST 28 DP 585288	ob95	334°11'00"	C		41.28 C		Class B
POST 28 DP 585288	POST 29 DP 585288	ob96	57°06'00"	C		38.39 C		Class B
POST 29 DP 585288	POST 30 DP 585288	ob97	96°45'00"	C		8.61 C		Class B
POST 30 DP 585288	POST 31 DP 585288	ob98	6°55'00"	C		2.95 C		Class B
POST 31 DP 585288	POST 32 DP 585288	ob99	25°22'00"	C		33.99 C		Class B
POST 32 DP 585288	POST 33 DP 585288	ob100	350°34'00"	C		43.93 C		Class B
POST 33 DP 585288	POST 34 DP 585288	ob101	343°42'30"	C		78.24 C		Class B
POST 34 DP 585288	POST 35 DP 585288	ob104	40°20'00"	C		15.96 C		Class B
POST 77 DP 585288	POST 76 DP 585288	ob105	278°01'30"	C		92.41 C		Class B
POST 76 DP 585288	POST 75 DP 585288	ob106	290°26'00"	C		117.01 C		Class B
POST 75 DP 585288	POST 74 DP 585288	ob107	303°30'40"	C		160.69 C		Class B
POST 74 DP 585288	UNMK 73 DP 585288	ob108	238°16'00"	C		3.30 C		Class B

# Mark and Vector

Survey Number DP 585288

Meridional Circuit Hawkes Bay 2000

From	To	Code	Bearing	Adpt Surv	Bearing Correction	Distance	Adpt Surv	Class
UNMK 73 DP 585288	POST 72 DP 585288	ob176	238°16'00"	C		62.90 C		Class B
POST 72 DP 585288	POST 71 DP 585288	ob109	227°46'00"	C		26.63 C		Class B
POST 71 DP 585288	UNMK 70 DP 585288	ob110	316°12'00"	C		39.10 C		Class B
UNMK 70 DP 585288	UNMK 69 DP 585288	ob178	316°12'00"	C		3.43 C		Class B
UNMK 69 DP 585288	POST 68 DP 585288	ob180	316°12'00"	C		125.37 C		Class B
POST 68 DP 585288	POST 67 DP 585288	ob111	47°03'00"	C		31.55 C		Class B
POST 67 DP 585288	POST 66 DP 585288	ob112	47°38'00"	C		53.42 C		Class B
POST 66 DP 585288	POST 65 DP 585288	ob113	81°37'30"	C		116.29 C		Class B
POST 65 DP 585288	POST 64 DP 585288	ob114	51°36'00"	C		141.18 C		Class B
POST 64 DP 585288	UNMK 63 DP 585288	ob115	318°09'00"	C		10.29 C		Class B
UNMK 63 DP 585288	POST 62 DP 585288	ob189	318°09'00"	C		117.16 C		Class B
POST 62 DP 585288	POST 61 DP 585288	ob117	43°44'00"	C		7.36 C		Class B
POST 61 DP 585288	POST 60 DP 585288	ob118	58°26'00"	C		36.64 C		Class B
POST 60 DP 585288	POST 59 DP 585288	ob119	127°05'00"	C		66.00 C		Class B
POST 59 DP 585288	UNMK 58 DP 585288	ob120	101°56'10"	C		207.70 C		Class B
UNMK 58 DP 585288	UNMK 57 DP 585288	ob190	101°56'10"	C		11.56 C		Class B
UNMK 57 DP 585288	PEG 56 DP 585288	ob187	101°56'10"	C		175.28 C		Class B
PEG 56 DP 585288	PEG 43 DP 585288	ob121	59°19'00"	C		16.19 C		Class B
IT LVI SO 3046	POST (27) SO 3046	ob142	232°29'00"	A SO 3046	0°00'00"	1.85 A SO 3046		
PEG (3) DP 21951	UNMK (124) DP 21951	ob125	201°28'00"	A DP 21951	0°00'00"	89.98 A DP 21951		
IT III SO 3046	PEG IV SO 1037	ob139	348°16'00"	A SO 3046	0°00'00"	3.24 A SO 3046		
PEG IV SO 1037	PEG III SO 1037	ob149	253°21'00"	A SO 1037	0°00'00"	128.81 A SO 1037		Class B
PEG III SO 1037	PEG (126) SO 3046	ob151	253°28'00"	A SO 1037	0°00'00"	106.04 A SO 3046		Class B
PEG (126) SO 3046	IS VI SO 3046	ob152	271°18'40"	A SO 3046	0°00'00"	61.01 A SO 3046		
IS VI SO 3046	PEG XLII DP 7556	ob154	135°10'30"	A SO 3046	0°00'00"	10.10 A SO 3046		

# Mark and Vector

Survey Number DP 585288

Meridional Circuit Hawkes Bay 2000

From	To	Code	Bearing	Adpt Surv	Bearing Correction	Distance	Adpt Surv	Class
PEG XLII DP 7556	IS IV SO 3046	ob155	77°35'00"	A SO 3046	0°00'00"	160.39 A	SO 3046	
POST (27) SO 3046	UNMK (123) SO 3046	ob71	193°59'00"	A SO 3046	0°00'00"	144.84 A	SO 3046	Class BD
PEG (126) SO 3046	UNMK (125) SO 1037	ob153	253°28'00"	A SO 3046	0°00'00"	4.57 A	SO 3046	Class BD
PEG IV SO 1037	PEG V SO 1037	ob150	72°47'00"	A SO 1037	0°00'00"	347.06 A	SO 1037	Class B
PEG V SO 1037	PEG VI SO 1037	ob156	73°26'00"	A SO 1037	0°00'00"	182.46 A	SO 1037	Class B
PEG VI SO 1037	PEG VII SO 1037	ob157	70°17'00"	A SO 1037	0°00'00"	232.91 A	SO 1037	Class B
PEG VII SO 1037	PEG VIII SO 1037	ob158	72°35'00"	A SO 1037	0°00'00"	266.71 A	SO 1037	Class B
PEG VIII SO 1037	PEG (4) SO 3046	ob159	71°32'00"	A SO 1037	0°00'00"	51.60 A	SO 1037	Class B
IT L SO 3046	PEG (20) SO 3046	ob11	168°46'00"	A DP 547752	0°00'00"	2.80 A	DP 547752	
POST (27) SO 3046	PEG (28) SO 3046	ob72	14°03'30"	A SO 3046	0°00'00"	630.70 A	SO 3046	Class B
PEG (28) SO 3046	POST (29) SO 3046	ob161	14°03'30"	A SO 3046	0°00'00"	235.49 A	SO 3046	Class B
POST (29) SO 3046	POST (30) SO 3046	ob162	30°45'20"	A SO 3046	0°00'00"	182.92 A	SO 3046	Class B
POST (30) SO 3046	PEG (31) SO 3046	ob163	67°30'00"	A SO 3046	0°00'00"	51.16 A	SO 3046	Class B
PEG (31) SO 3046	PEG (20) SO 3046	ob164	27°11'30"	A SO 3046	0°00'00"	253.33 A	SO 3046	Class B
PEG (20) SO 3046	PEG (55) SO 3046	ob160	136°10'40"	A SO 3046	0°00'00"	315.53 A	SO 3046	Class B
PEG (55) SO 3046	POST (54) SO 2989	ob165	122°38'15"	A SO 2989	0°00'00"	983.11 A	DP 21951	Class B
POST (54) SO 2989	POST (53) SO 2989	ob166	138°13'00"	A SO 2989	0°00'00"	27.90 A	SO 2989	Class B
POST (53) SO 2989	POST (52) SO 2989	ob167	145°44'30"	A SO 2989	0°00'00"	21.44 A	SO 2989	Class B
POST (52) SO 2989	POST (51) SO 2989	ob168	154°54'00"	A SO 2989	0°00'00"	20.44 A	SO 2989	Class B
POST (51) SO 2989	PEG (50) SO 2989	ob169	161°09'00"	A SO 2989	0°00'00"	22.53 A	SO 2989	Class B
PEG (50) SO 2989	PEG (49) SO 2989	ob170	180°05'00"	A SO 2989	0°00'00"	159.67 A	SO 2989	Class B
PEG (49) SO 2989	PEG (48) SO 2989	ob171	178°22'00"	A SO 2989	0°00'00"	93.56 A	SO 2989	Class B
PEG (48) SO 2989	PEG (47) SO 2989	ob172	176°56'00"	A SO 2989	0°00'00"	31.89 A	SO 2989	Class B
PEG (47) SO 2989	PEG (46) SO 2989	ob173	174°08'00"	A SO 2989	0°00'00"	23.84 A	SO 2989	Class B
PEG (46) SO 2989	PEG (45) SO 2989	ob174	169°55'00"	A SO 2989	0°00'00"	25.91 A	SO 2989	Class B

# Mark and Vector

Survey Number DP 585288

Meridional Circuit Hawkes Bay 2000

From	To	Code	Bearing	Adpt Surv	Bearing Correction	Distance	Adpt Surv	Class
UNMK 40 DP 585288	UNMK 106 DP 585288	ob183	284°54'00"	C		172.11 C		Class B
UNMK 106 DP 585288	UNMK 57 DP 585288	ob186	306°42'00"	C		75.95 C		Class B
UNMK 39 DP 585288	UNMK 107 DP 585288	ob184	284°54'00"	C		181.84 C		Class B
UNMK 107 DP 585288	UNMK 108 DP 585288	ob192	306°42'00"	C		76.92 C		Class B
UNMK 108 DP 585288	UNMK 58 DP 585288	ob193	307°33'00"	C		10.50 C		Class B
UNMK 58 DP 585288	UNMK 109 DP 585288	ob191	307°33'00"	C		323.62 C		Class B
UNMK 109 DP 585288	UNMK 110 DP 585288	ob194	228°52'00"	C		60.86 C		Class B
UNMK 110 DP 585288	UNMK 111 DP 585288	ob195	197°30'00"	C		18.11 C		Class B
UNMK 111 DP 585288	UNMK 112 DP 585288	ob196	190°45'00"	C		3.02 C		Class B
UNMK 112 DP 585288	UNMK 113 DP 585288	ob197	177°57'00"	C		12.19 C		Class B
UNMK 113 DP 585288	UNMK 114 DP 585288	ob198	157°15'00"	C		23.78 C		Class B
UNMK 114 DP 585288	UNMK 115 DP 585288	ob199	181°39'00"	C		38.29 C		Class B
UNMK 115 DP 585288	UNMK 116 DP 585288	ob200	253°50'00"	C		48.34 C		Class B
UNMK 116 DP 585288	UNMK 63 DP 585288	ob201	121°12'00"	C		154.69 C		Class B
UNMK 57 DP 585288	UNMK 105 DP 585288	ob188	307°33'00"	C		333.04 C		Class B
UNMK 105 DP 585288	UNMK 109 DP 585288	ob202	228°52'00"	C		5.10 C		Class B
UNMK 105 DP 585288	UNMK 104 DP 585288	ob203	48°52'00"	C		67.28 C		Class B
UNMK 104 DP 585288	UNMK 103 DP 585288	ob204	318°52'00"	C		7.00 C		Class B
UNMK 103 DP 585288	UNMK 102 DP 585288	ob205	228°52'00"	C		68.68 C		Class B
UNMK 102 DP 585288	UNMK 101 DP 585288	ob206	228°52'00"	C		5.10 C		Class B
UNMK 101 DP 585288	UNMK 100 DP 585288	ob210	127°33'00"	C		4.08 C		Class B
UNMK 100 DP 585288	UNMK 109 DP 585288	ob208	127°33'00"	C		3.06 C		Class B
UNMK 102 DP 585288	UNMK 105 DP 585288	ob207	127°33'00"	C		7.14 C		Class B
UNMK 100 DP 585288	UNMK 99 DP 585288	ob209	228°52'00"	C		61.10 C		Class B



# Mark and Vector

Survey Number DP 585288

Meridional Circuit Hawkes Bay 2000

From	To	Code	Bearing	Adpt Surv	Bearing Correction	Distance	Adpt Surv	Class
UNMK 99 DP 585288	UNMK 98 DP 585288	ob212	197°30'00"	C		19.13 C		Class B
UNMK 98 DP 585288	UNMK 97 DP 585288	ob213	190°45'00"	C		3.54 C		Class B
UNMK 97 DP 585288	UNMK 96 DP 585288	ob214	177°57'00"	C		13.08 C		Class B
UNMK 96 DP 585288	UNMK 95 DP 585288	ob215	157°15'00"	C		23.68 C		Class B
UNMK 95 DP 585288	UNMK 94 DP 585288	ob216	181°39'00"	C		35.45 C		Class B
UNMK 94 DP 585288	UNMK 93 DP 585288	ob217	253°50'00"	C		220.71 C		Class B
UNMK 93 DP 585288	UNMK 92 DP 585288	ob218	246°22'40"	C		192.85 C		Class B
UNMK 92 DP 585288	UNMK 91 DP 585288	ob219	238°24'00"	C		333.27 C		Class B
UNMK 91 DP 585288	UNMK 90 DP 585288	ob220	262°56'00"	C		4.36 C		Class B
UNMK 90 DP 585288	UNMK 89 DP 585288	ob221	172°56'00"	C		5.00 C		Class B
UNMK 89 DP 585288	UNMK 88 DP 585288	ob222	82°56'00"	C		5.00 C		Class B
UNMK 88 DP 585288	UNMK 87 DP 585288	ob223	352°56'00"	C		1.00 C		Class B
UNMK 87 DP 585288	UNMK 86 DP 585288	ob224	82°56'00"	C		245.93 C		Class B
UNMK 86 DP 585288	UNMK 85 DP 585288	ob225	114°02'00"	C		242.33 C		Class B
UNMK 85 DP 585288	UNMK 70 DP 585288	ob226	75°13'00"	C		106.10 C		Class B
POST 64 DP 585288	UNMK 117 DP 585288	ob116	301°12'00"	C		167.29 C		Class B
UNMK 117 DP 585288	UNMK 118 DP 585288	ob227	253°50'00"	C		170.28 C		Class B
UNMK 118 DP 585288	UNMK 119 DP 585288	ob228	246°22'40"	C		192.44 C		Class B
UNMK 119 DP 585288	UNMK 120 DP 585288	ob229	238°24'00"	C		328.90 C		Class B
UNMK 120 DP 585288	UNMK 121 DP 585288	ob230	82°56'00"	C		242.37 C		Class B
UNMK 121 DP 585288	UNMK 122 DP 585288	ob231	114°02'00"	C		242.10 C		Class B
UNMK 122 DP 585288	UNMK 69 DP 585288	ob232	75°13'00"	C		103.38 C		Class B
UNMK 70 DP 585288	UNMK 83 DP 585288	ob179	75°13'00"	C		99.57 C		Class B
UNMK 83 DP 585288	UNMK 73 DP 585288	ob233	123°30'40"	C		4.80 C		Class B

# Mark and Vector

Survey Number DP 585288

Meridional Circuit Hawkes Bay 2000

From	To	Code	Bearing	Adpt Surv	Bearing Correction	Distance	Adpt Surv	Class
UNMK 69 DP 585288	UNMK 84 DP 585288	ob181	75°13'00"	C		102.58 C		Class B
UNMK 84 DP 585288	POST 74 DP 585288	ob234	123°30'40"	C		7.53 C		Class B
UNMK 73 DP 585288	UNMK 82 DP 585288	ob177	123°30'40"	C		162.42 C		Class B
UNMK 82 DP 585288	UNMK 81 DP 585288	ob235	110°26'00"	C		117.68 C		Class B
UNMK 81 DP 585288	UNMK 80 DP 585288	ob236	98°01'30"	C		92.83 C		Class B
XIX A SO 4543	PEG 11 DP 585288	ob4	309°49'00"	M		48.40 M		
XIX A SO 4543	POST 12 DP 585288	ob5	302°18'00"	M		49.07 M		
XIX A SO 4543	POST 13 DP 585288	ob6	258°43'00"	M		68.85 M		
IS IF SO 3046	POST 14 DP 585288	ob129	63°56'20"	M		238.17 M		
IS IF SO 3046	POST 15 DP 585288	ob130	59°25'20"	M		211.02 M		
IS IF SO 3046	POST 16 DP 585288	ob131	54°28'00"	M		159.11 M		
IS IF SO 3046	POST 17 DP 585288	ob132	47°35'30"	M		138.22 M		
IS IF SO 3046	POST 18 DP 585288	ob133	34°35'30"	M		121.00 M		
IS IF SO 3046	POST 19 DP 585288	ob134	24°47'00"	M		119.79 M		
IS IF SO 3046	POST 20 DP 585288	ob135	16°28'00"	M		125.93 M		
IS IF SO 3046	POST 21 DP 585288	ob136	8°20'00"	M		145.28 M		
IS IF SO 3046	POST 22 DP 585288	ob137	355°33'00"	M		166.99 M		
IT 2 DP 585288	POST 23 DP 585288	ob32	192°02'00"	M		74.72 M		
IT 2 DP 585288	POST 25 DP 585288	ob33	253°26'00"	M		49.26 M		
IT 2 DP 585288	POST 26 DP 585288	ob34	263°14'00"	M		47.25 M		
IT 2 DP 585288	POST 27 DP 585288	ob35	310°01'00"	M		33.68 M		
IT 2 DP 585288	POST 28 DP 585288	ob36	323°21'00"	M		73.32 M		
IT 2 DP 585288	POST 29 DP 585288	ob37	351°45'30"	M		80.50 M		
IT 2 DP 585288	POST 30 DP 585288	ob38	357°49'30"	M		78.72 M		

# Mark and Vector

Survey Number DP 585288

Meridional Circuit Hawkes Bay 2000

From	To	Code	Bearing	Adpt Surv	Bearing Correction	Distance	Adpt Surv	Class
IT 2 DP 585288	POST 31 DP 585288	ob39	358°09'00" M			81.63 M		
IT 2 DP 585288	POST 32 DP 585288	ob40	6°04'00" M			112.94 M		
IT 2 DP 585288	POST 77 DP 585288	ob41	270°24'50" M			291.48 M		
IS A SO 2989	POST 35 DP 585288	ob50	238°56'00" M			19.76 M		
IS A SO 2989	POST 34 DP 585288	ob51	230°38'00" M			35.25 M		
IS A SO 2989	POST 33 DP 585288	ob52	183°07'00" M			97.60 M		
IT 1 DP 585288	POST 76 DP 585288	ob14	123°02'30" M			319.42 M		
IT 1 DP 585288	POST 75 DP 585288	ob15	130°08'00" M			206.82 M		
IT 1 DP 585288	POST 74 DP 585288	ob16	151°35'00" M			50.71 M		
IT 1 DP 585288	POST 72 DP 585288	ob17	202°03'00" M			85.68 M		
IT 1 DP 585288	POST 71 DP 585288	ob18	208°04'00" M			110.28 M		
IT 1 DP 585288	POST 68 DP 585288	ob19	278°05'00" M			169.78 M		
IT 1 DP 585288	POST 67 DP 585288	ob20	287°22'40" M			151.93 M		
IT 1 DP 585288	POST 66 DP 585288	ob21	307°38'00" M			133.25 M		
IT 1 DP 585288	POST 65 DP 585288	ob22	5°32'00" M			98.77 M		
IT 1 DP 585288	POST 64 DP 585288	ob23	32°52'00" M			221.44 M		
IT 1 DP 585288	POST 62 DP 585288	ob24	7°07'45" M			283.13 M		
IT 1 DP 585288	POST 61 DP 585288	ob25	8°00'00" M			289.07 M		
IT 1 DP 585288	POST 60 DP 585288	ob26	13°09'50" M			313.68 M		
IT 1 DP 585288	POST 59 DP 585288	ob27	25°02'30" M			293.20 M		
IS V SO 2989	PEG 43 DP 585288	ob58	311°58'00" M			73.59 M		
IS V SO 2989	PEG 56 DP 585288	ob59	300°49'00" M			79.90 M		
XX SO 4543	PEG (38) SO 2989	ob44	34°53'00" M			14.38 M		
POST 25 DP 585288	POST 77 DP 585288	ob93	273°47'00" M			244.79 M		Class B

# Mark and Vector

Survey Number DP 585288

Meridional Circuit Hawkes Bay 2000

From	To	Code	Bearing	Adpt Surv	Bearing Correction	Distance	Adpt Surv	Class
UNMK 80 DP 585288	UNMK 24 DP 585288	ob237	93°47'00"	M		246.79 M		Class B
UNMK 39 DP 585288	UNMK 132 DP 585288	ob185	134°34'30"	A	SO 2989	78.28 C		Class B
UNMK 132 DP 585288	UNMK 133 DP 585288	ob238	134°34'30"	A	SO 2989	3.35 C		Class B
PEG (37) SO 2989	UNMK 130 DP 585288	ob66	134°03'30"	A	SO 3046	28.93 C		Class B
UNMK 130 DP 585288	UNMK 131 DP 585288	ob241	134°03'30"	A	SO 3046	3.33 C		Class B
UNMK 131 DP 585288	PEG 11 DP 585288	ob242	134°03'30"	A	SO 3046	436.41 C		Class B
UNMK 101 DP 585288	UNMK 134 DP 585288	ob211	316°15'00"	M		108.03 M		Class B
UNMK 134 DP 585288	UNMK 135 DP 585288	ob243	321°54'00"	M		6.20 M		Class B
UNMK 135 DP 585288	UNMK 136 DP 585288	ob244	290°15'00"	C		7.63 C		Class B
UNMK 136 DP 585288	UNMK 137 DP 585288	ob245	282°40'00"	C		11.85 C		Class B
UNMK 137 DP 585288	UNMK 138 DP 585288	ob246	189°40'00"	C		0.17 C		Class B
UNMK 138 DP 585288	UNMK 139 DP 585288	ob247	279°40'00"	C		5.50 C		Class B
UNMK 139 DP 585288	UNMK 140 DP 585288	ob248	9°40'00"	C		3.50 C		Class B
UNMK 140 DP 585288	UNMK 141 DP 585288	ob249	99°40'00"	C		5.50 C		Class B
UNMK 141 DP 585288	UNMK 142 DP 585288	ob250	189°40'00"	C		0.33 C		Class B
UNMK 142 DP 585288	UNMK 143 DP 585288	ob251	102°40'00"	C		12.21 C		Class B
UNMK 143 DP 585288	UNMK 144 DP 585288	ob252	110°15'00"	C		8.43 C		Class B
UNMK 144 DP 585288	UNMK 145 DP 585288	ob253	124°35'00"	C		7.08 C		Class B
UNMK 145 DP 585288	UNMK 102 DP 585288	ob254	136°12'00"	C		108.27 C		Class B
POST 33 DP 585288	UNMK 191 DP 585288	ob102	7°28'00"	C		24.29 C		Class B
UNMK 191 DP 585288	UNMK 190 DP 585288	ob255	20°02'00"	C		22.57 C		Class B
UNMK 190 DP 585288	UNMK 130 DP 585288	ob256	69°39'00"	C		15.90 C		Class B
POST 33 DP 585288	UNMK 192 DP 585288	ob103	166°53'30"	C		86.39 C		Class B
UNMK 192 DP 585288	UNMK 193 DP 585288	ob257	145°15'00"	C		9.98 C		Class B

# Mark and Vector

Survey Number DP 585288

Meridional Circuit Hawkes Bay 2000

From	To	Code	Bearing	Adpt Surv	Bearing Correction	Distance	Adpt Surv	Class
UNMK 193 DP 585288	UNMK 194 DP 585288	ob258	114°56'00"	C		6.65 C		Class B
UNMK 194 DP 585288	UNMK 195 DP 585288	ob259	145°25'00"	C		3.89 C		Class B
UNMK 195 DP 585288	UNMK 196 DP 585288	ob260	53°25'00"	C		3.50 C		Class B
UNMK 196 DP 585288	UNMK 197 DP 585288	ob261	325°25'00"	C		5.50 C		Class B
UNMK 197 DP 585288	UNMK 198 DP 585288	ob262	233°25'00"	C		1.02 C		Class B
UNMK 198 DP 585288	UNMK 199 DP 585288	ob263	294°56'00"	C		5.63 C		Class B
UNMK 199 DP 585288	UNMK 200 DP 585288	ob264	325°15'00"	C		8.60 C		Class B
UNMK 200 DP 585288	UNMK 201 DP 585288	ob265	346°53'30"	C		85.27 C		Class B
UNMK 201 DP 585288	UNMK 202 DP 585288	ob266	7°28'00"	C		23.41 C		Class B
UNMK 202 DP 585288	UNMK 203 DP 585288	ob267	20°02'00"	C		20.85 C		Class B
UNMK 203 DP 585288	UNMK 131 DP 585288	ob268	69°39'00"	C		15.95 C		Class B
UNMK 132 DP 585288	UNMK 150 DP 585288	ob239	250°56'00"	C		41.89 C		Class B
UNMK 150 DP 585288	UNMK 151 DP 585288	ob269	238°06'00"	C		13.46 C		Class B
UNMK 151 DP 585288	UNMK 152 DP 585288	ob270	230°55'00"	C		16.92 C		Class B
UNMK 152 DP 585288	UNMK 153 DP 585288	ob271	224°13'00"	C		52.04 C		Class B
UNMK 153 DP 585288	UNMK 154 DP 585288	ob272	213°15'00"	C		24.43 C		Class B
UNMK 154 DP 585288	UNMK 155 DP 585288	ob273	220°13'00"	C		16.37 C		Class B
UNMK 155 DP 585288	UNMK 156 DP 585288	ob274	235°36'00"	C		22.34 C		Class B
UNMK 156 DP 585288	UNMK 157 DP 585288	ob275	254°14'00"	C		25.85 C		Class B
UNMK 157 DP 585288	UNMK 158 DP 585288	ob276	285°48'00"	C		14.87 C		Class B
UNMK 158 DP 585288	UNMK 159 DP 585288	ob277	294°46'00"	C		30.13 C		Class B
UNMK 159 DP 585288	UNMK 160 DP 585288	ob278	305°18'00"	C		33.62 C		Class B
UNMK 160 DP 585288	UNMK 161 DP 585288	ob279	297°28'00"	C		29.82 C		Class B
UNMK 161 DP 585288	UNMK 162 DP 585288	ob280	273°19'00"	C		20.02 C		Class B

# Mark and Vector

Survey Number DP 585288

Meridional Circuit Hawkes Bay 2000

From	To	Code	Bearing	Adpt Surv	Bearing Correction	Distance	Adpt Surv	Class
UNMK 162 DP 585288	UNMK 163 DP 585288	ob281	287°08'00"	C		14.30 C		Class B
UNMK 163 DP 585288	UNMK 164 DP 585288	ob282	305°00'00"	C		5.52 C		Class B
UNMK 164 DP 585288	UNMK 165 DP 585288	ob283	24°43'00"	C		0.66 C		Class B
UNMK 165 DP 585288	UNMK 166 DP 585288	ob284	294°43'00"	C		5.50 C		Class B
UNMK 166 DP 585288	UNMK 167 DP 585288	ob285	204°43'00"	C		3.50 C		Class B
UNMK 167 DP 585288	UNMK 168 DP 585288	ob286	114°43'00"	C		4.37 C		Class B
UNMK 168 DP 585288	UNMK 169 DP 585288	ob287	125°00'00"	C		6.60 C		Class B
UNMK 169 DP 585288	UNMK 170 DP 585288	ob288	107°08'00"	C		15.14 C		Class B
UNMK 170 DP 585288	UNMK 171 DP 585288	ob289	93°19'00"	C		19.69 C		Class B
UNMK 171 DP 585288	UNMK 172 DP 585288	ob290	121°22'00"	C		28.87 C		Class B
UNMK 172 DP 585288	UNMK 173 DP 585288	ob291	125°18'00"	C		33.82 C		Class B
UNMK 173 DP 585288	UNMK 174 DP 585288	ob292	114°46'00"	C		30.98 C		Class B
UNMK 174 DP 585288	UNMK 175 DP 585288	ob293	105°48'00"	C		16.67 C		Class B
UNMK 175 DP 585288	UNMK 176 DP 585288	ob294	74°14'00"	C		28.09 C		Class B
UNMK 176 DP 585288	UNMK 177 DP 585288	ob295	55°36'00"	C		23.84 C		Class B
UNMK 177 DP 585288	UNMK 178 DP 585288	ob296	40°13'00"	C		17.35 C		Class B
UNMK 178 DP 585288	UNMK 179 DP 585288	ob297	33°15'00"	C		24.25 C		Class B
UNMK 179 DP 585288	UNMK 180 DP 585288	ob298	44°13'00"	C		51.41 C		Class B
UNMK 180 DP 585288	UNMK 182 DP 585288	ob299	44°04'00"	C		16.50 C		Class B
UNMK 182 DP 585288	UNMK 183 DP 585288	ob300	58°06'00"	C		12.84 C		Class B
UNMK 183 DP 585288	UNMK 133 DP 585288	ob301	70°56'00"	C		43.04 C		Class B

Mark Name	Mark Condition	Description
IS A SO 2989		Down 0.15 in grass berm
IS IF SO 3046		Down 0.2m in farm track
IS IIIA SO 2989		Down 0.15 in grass berm

# Mark and Vector

Survey Number DP 585288  
Meridional Circuit Hawkes Bay 2000

Mark Name	Mark Condition	Description
IS IV SO 3046		Down 0.3m in paddock on top of slope
IS V SO 2989		Down 0.15 in grass berm
IT 1 DP 585288		Down 0.3m in paddock
IT 2 DP 585288		Down 0.3m in paddock
IT III SO 3046		Down 0.3m in paddock
IT L SO 3046		Down 0.4m in grass berm
IT VII DP 21951		Down 0.3m in paddock on top of knob
PEG (3) DP 21951		Base of fence on top of knob
XIX A SO 4543		Down 0.15 in grass berm
XX SO 4543		Down 0.3m, set in conc, in grassed berm
XXII SO 4543		Down 0.6m, set in conc in road shoulder

**\*\*\* End of Report \*\*\***



THE SURVEYING COMPANY  
115E Avenue Road  
PO BOX 922 HASTINGS  
PH: 06 878 6349  
FAX: 06 878 6989

**SCHEDULE**

Land Registration District <b>Hawke's Bay</b>	Plan Number <b>DP 585288</b>
Territorial Authority (the Council) <b>Central Hawke's Bay District Council</b>	Council Reference <b>RM220027</b>

**SCHEDULE OF EASEMENTS**

PURPOSE	BURDENED LAND (Servient Tenement)	SHOWN	BENEFITED LAND (Dominant Tenement)
RIGHT TO CONVEY ELECTRICITY	LOT 1	C, D	LOTS 2 & 3
RIGHT TO CONVEY WATER		C, D, E, G	
	LOT 2	F	LOTS 1 & 3

**SCHEDULE OF EASEMENTS IN GROSS**

PURPOSE	BURDENED LAND (Servient Tenement)	SHOWN	BENEFITED LAND (Dominant Tenement)
RIGHT TO CONVEY ELECTRICITY RIGHT TO CONVEY TELECOMMUNICATIONS	LOT 1	B, D, H	CENTRALINES LIMITED
	LOT 2	A, I	
	LOT 3	J	

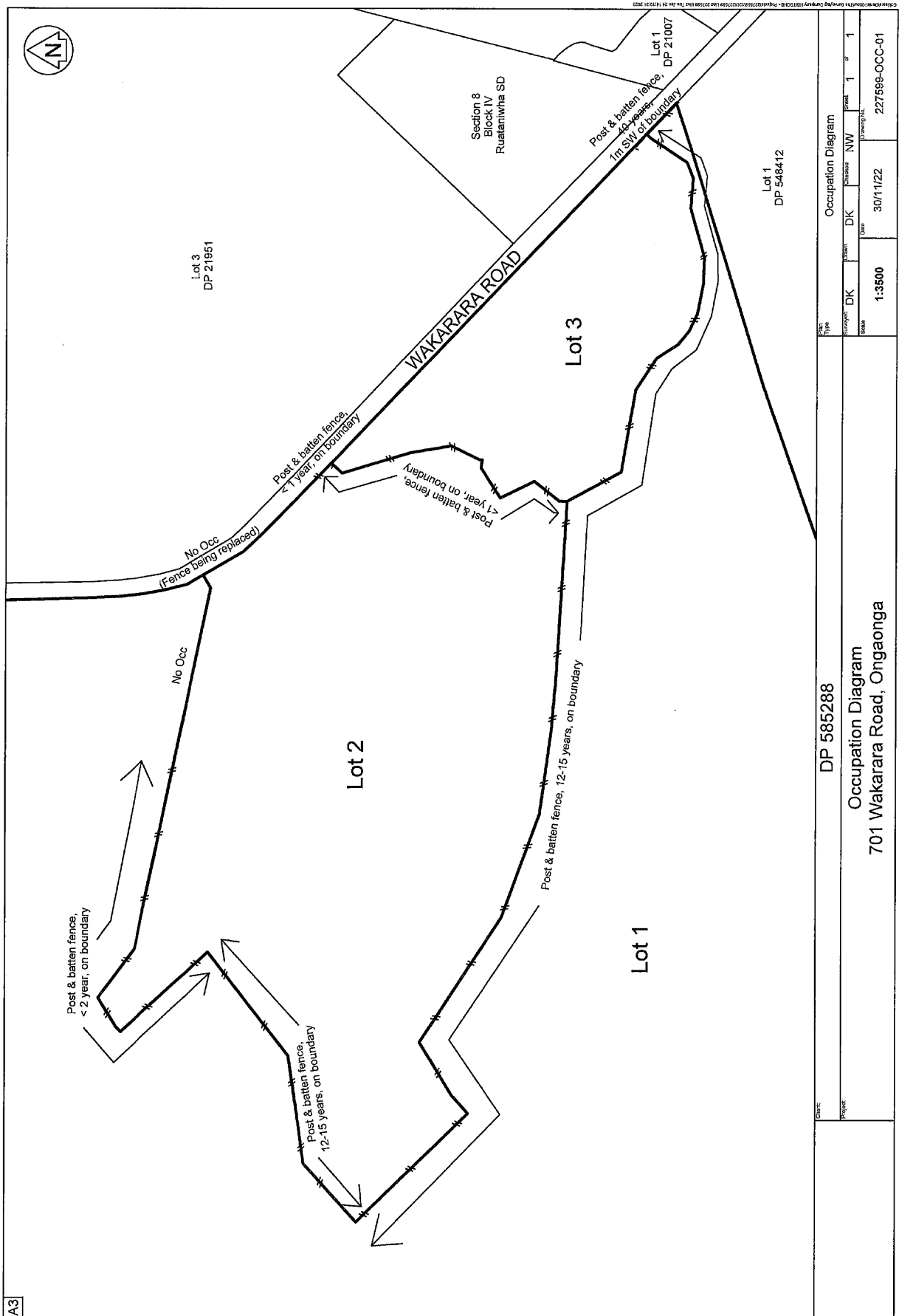
**SCHEDULE OF EXISTING EASEMENT**

PURPOSE	BURDENED LAND (Servient Tenement)	DOCUMENT
RIGHT TO CONVEY WATER	LOTS 1 - 3	EI.11357401.3



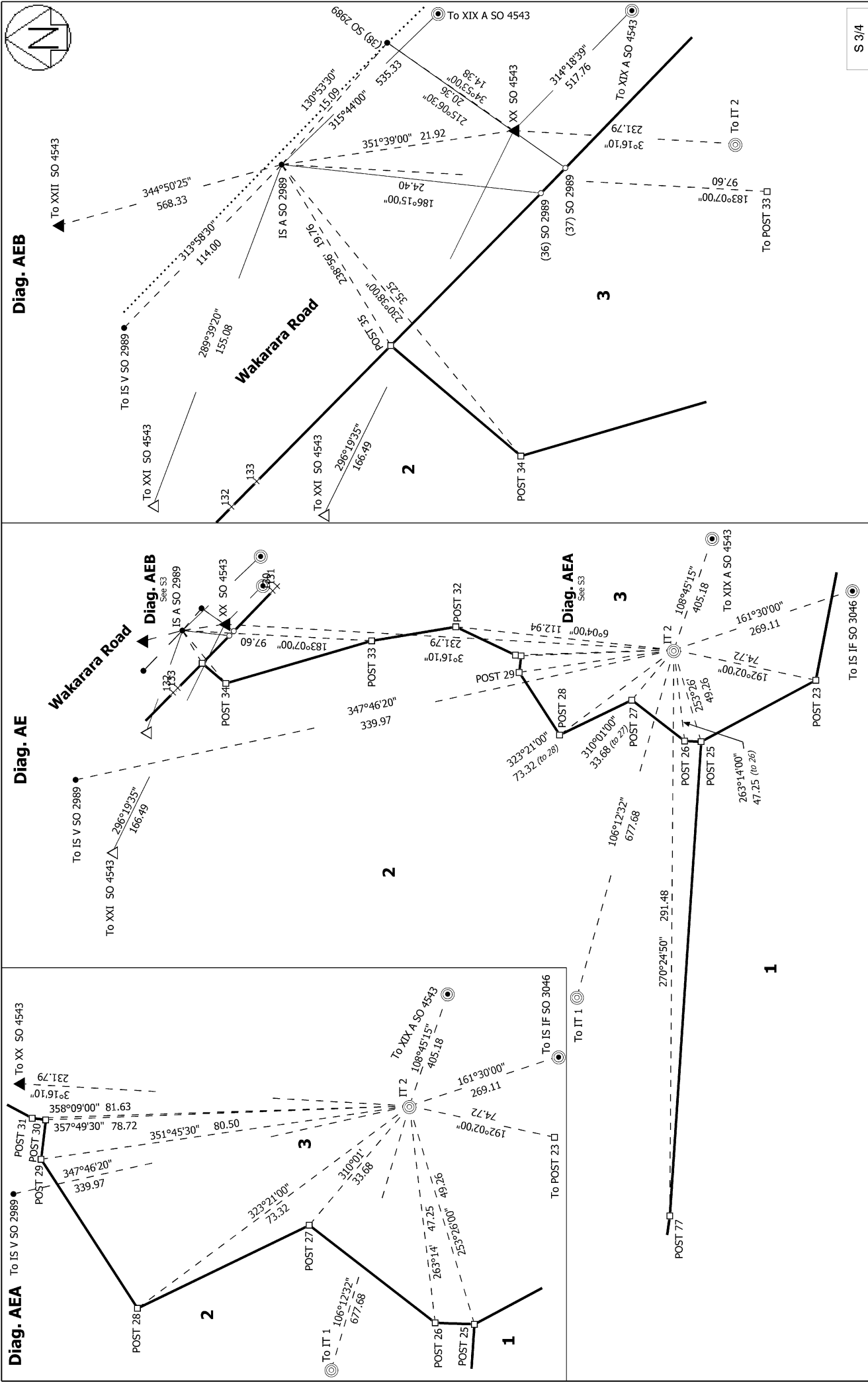
# Occupation Diagram

72









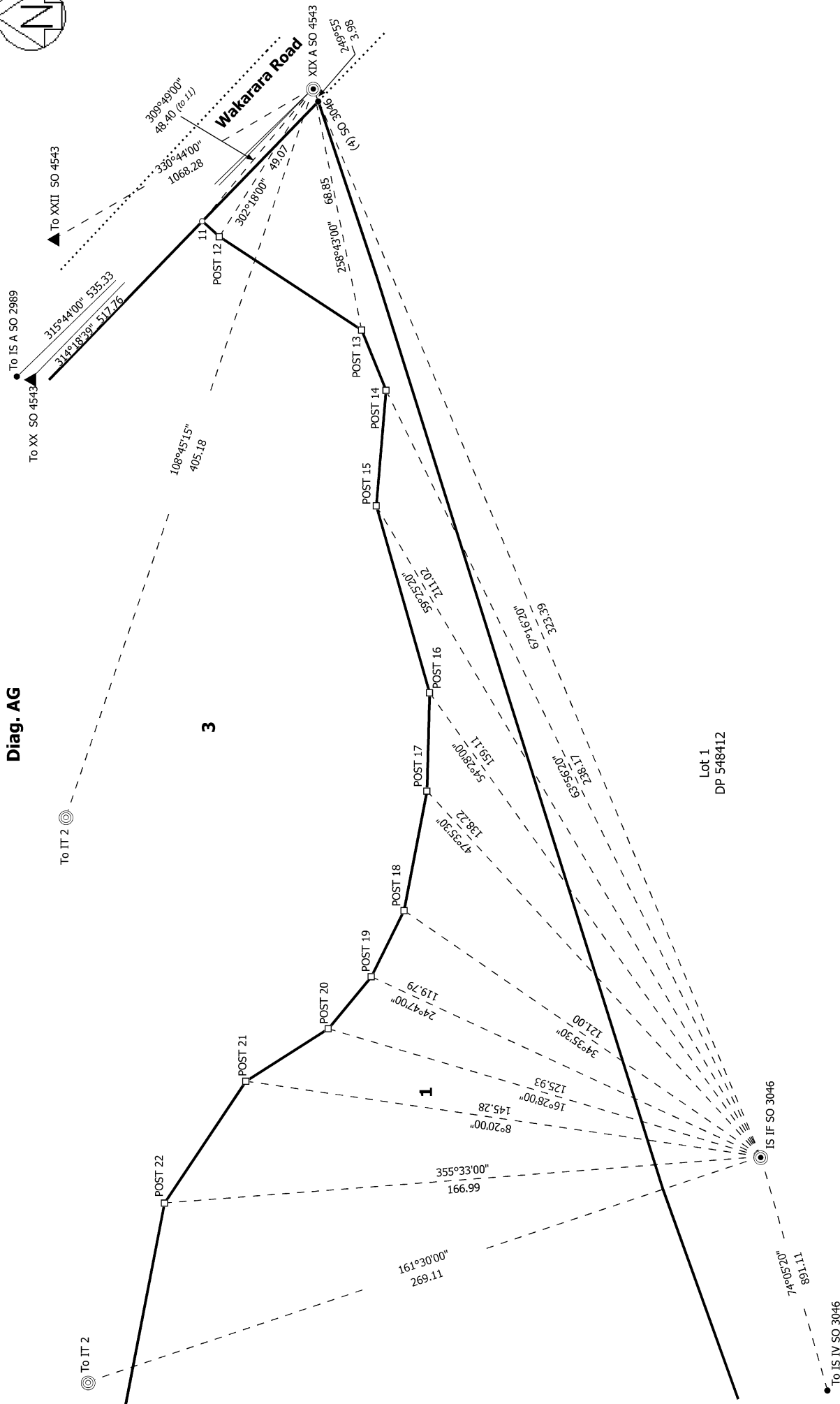
Record of Survey  
 DP 585288  
 Deposited on: 24/03/2023

Surveyor: Nicholas Roger Hope Wakefield  
 Firm: The Surveying Company (Hastings)  
 Date of Survey: 29/11/2022

Lots 1-3 being a subdivision of Lots 1 & 4 DP 21951



Diag. AG



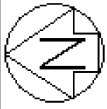
S 4/4

Record of Survey  
 DP 585288  
 Deposited on: 24/03/2023

Surveyor: Nicholas Roger Hope Wakefield  
 Firm: The Surveying Company (Hastings)  
 Date of Survey: 29/11/2022

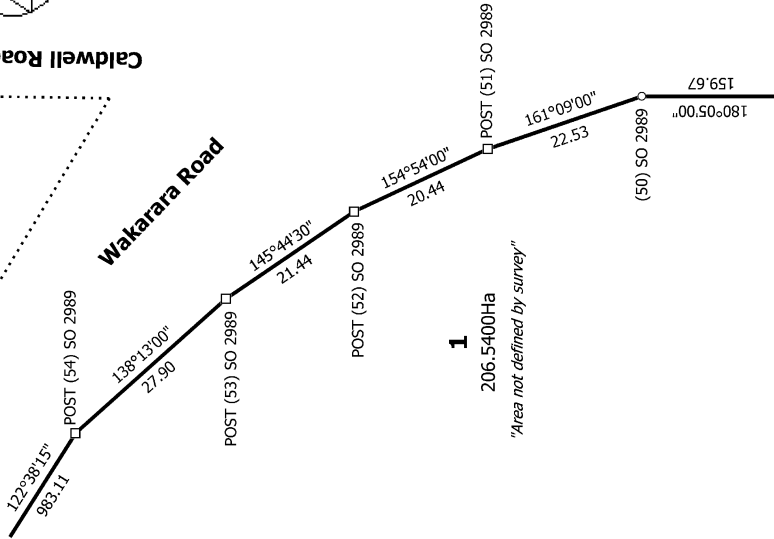
Lots 1-3 being a subdivision of Lots 1 & 4 DP 21951

Land District: Hawkes Bay  
 Digitally Generated Plan  
 Generated on: 24/05/2023 06:23:00 Page 21 of 26



Caldwell Road

Diag. AC  
Wakarara Road

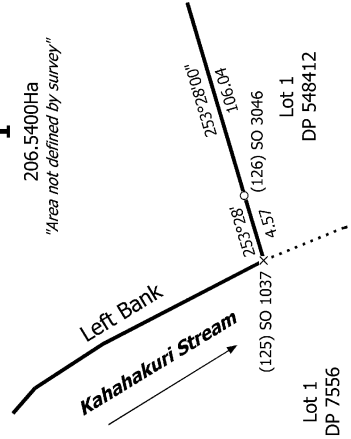


1  
206.5400Ha  
"Area not defined by survey"

Diag. AB

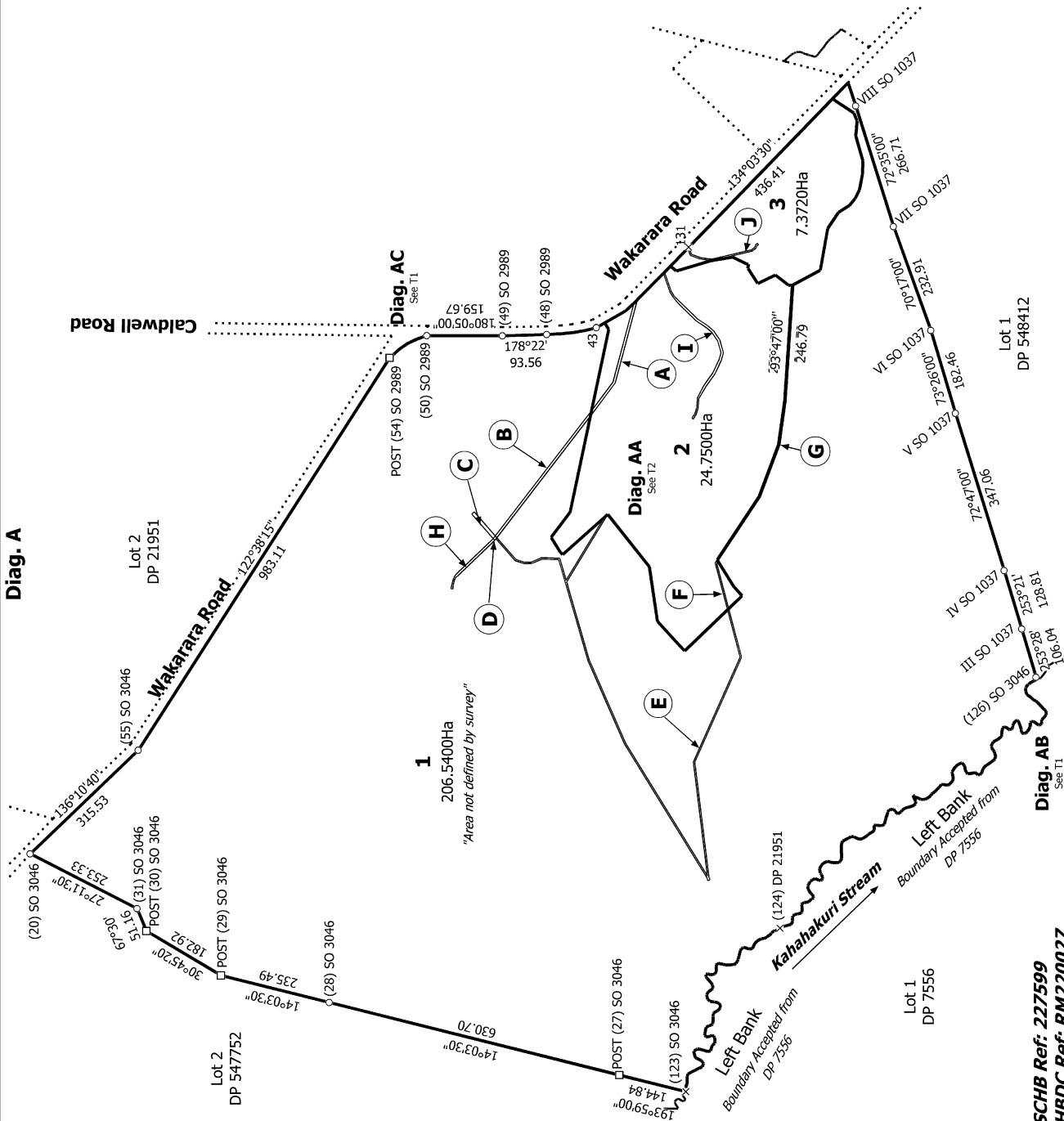
1

206.5400Ha  
"Area not defined by survey"



T 1/5

Diag. A



1  
206.5400Ha  
"Area not defined by survey"

Diag. AA  
See T2  
24.7500Ha

Wakarara Road

Diag. AB  
See T1

Lots 1 - 3 being a subdivision of Lots 1 & 4 DP 21951

TSCB Ref: 227599  
CHBDC Ref: RM220027

Land District: Hawkes Bay

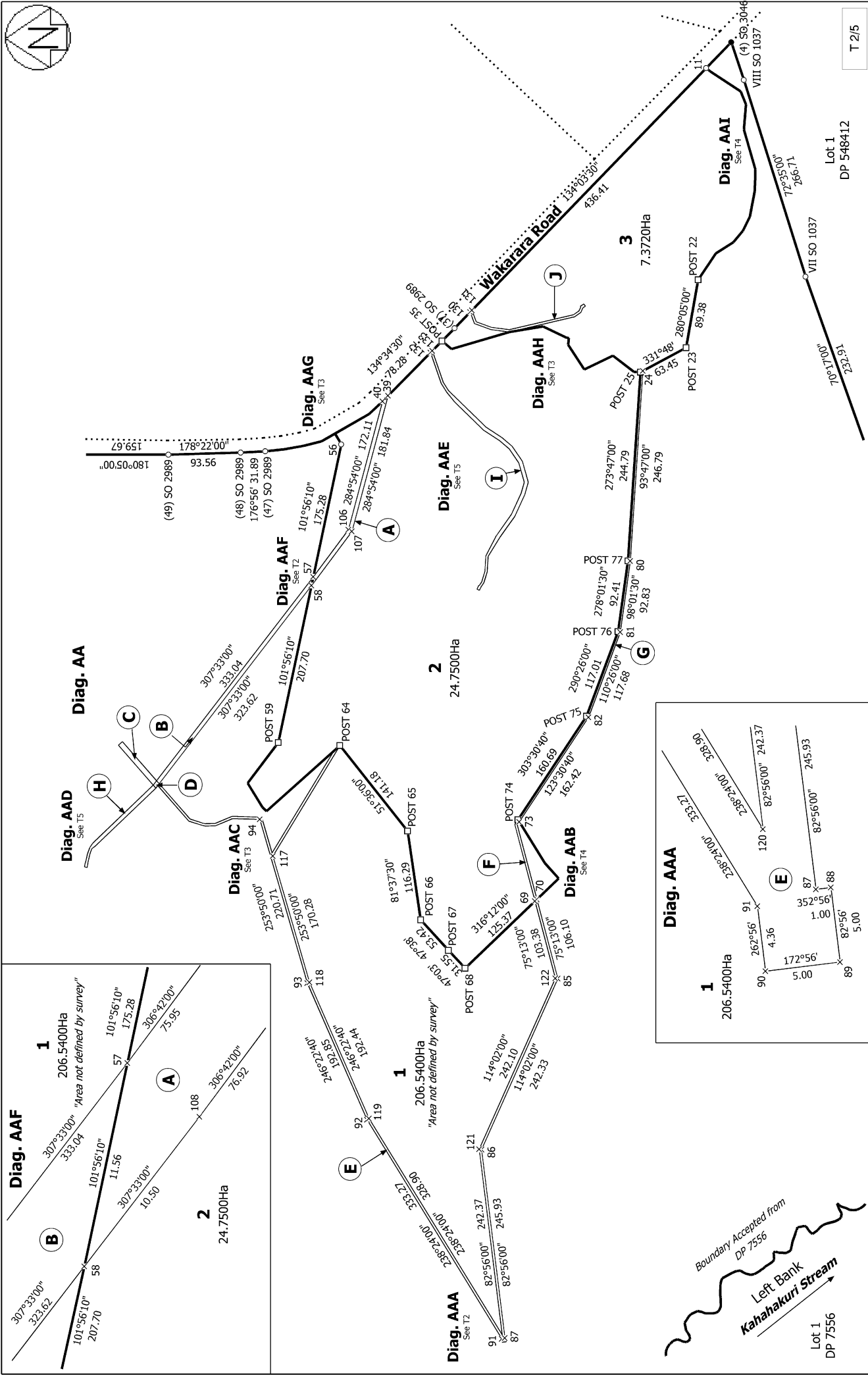
Digitally Generated Plan

Generated on: 24/05/2023 06:23:36 | Page 22 of 26

Surveyor: Nicholas Roger Hope Wakefield  
Firm: The Surveying Company (Hastings)  
Date of Survey: 29/11/2022

Record of Survey  
DP 585288

Deposited on: 24/03/2023



T 2/5

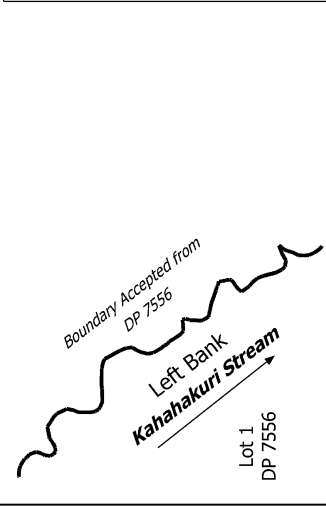
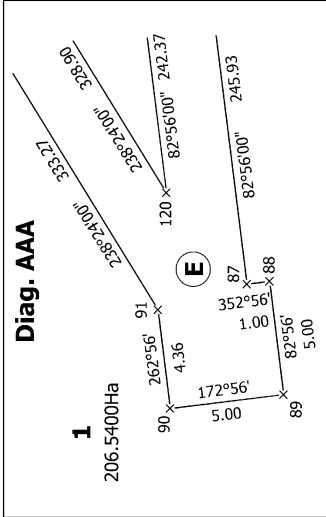
Surveyor: Nicholas Roger Hope Wakefield  
 Firm: The Surveying Company (Hastings)  
 Date of Survey: 29/11/2022

Record of Survey  
 DP 585288  
 Deposited on: 24/03/2023

Surveyor: Nicholas Roger Hope Wakefield  
 Firm: The Surveying Company (Hastings)  
 Date of Survey: 29/11/2022

Land District: Hawkes Bay  
 Digitally Generated Plan  
 Generated on: 24/05/2023 06:23:00 Page 23 of 26

Lot 1  
 DP 7556

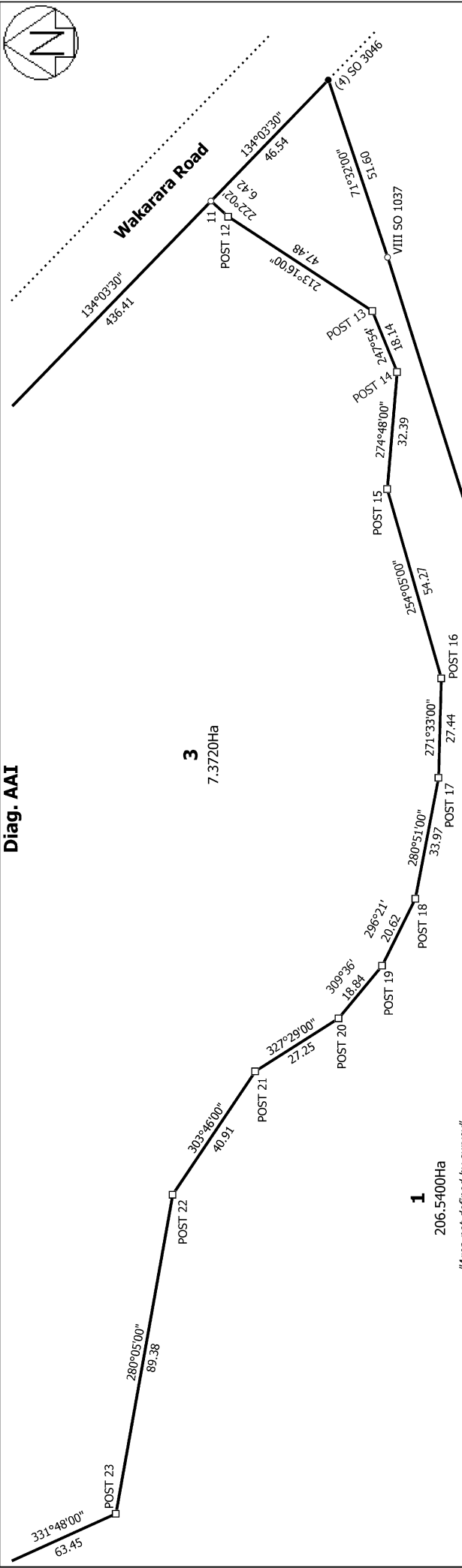


Lots 1 - 3 being a subdivision of Lots 1 & 4 DP 21951

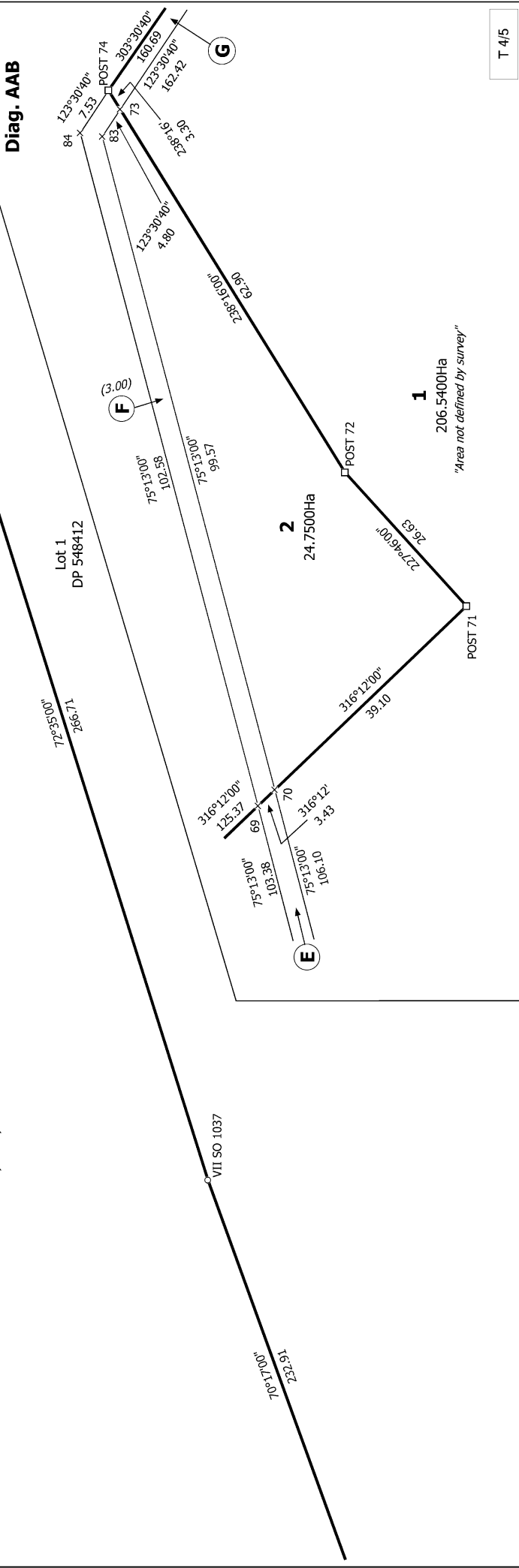




**Diag. AAI**



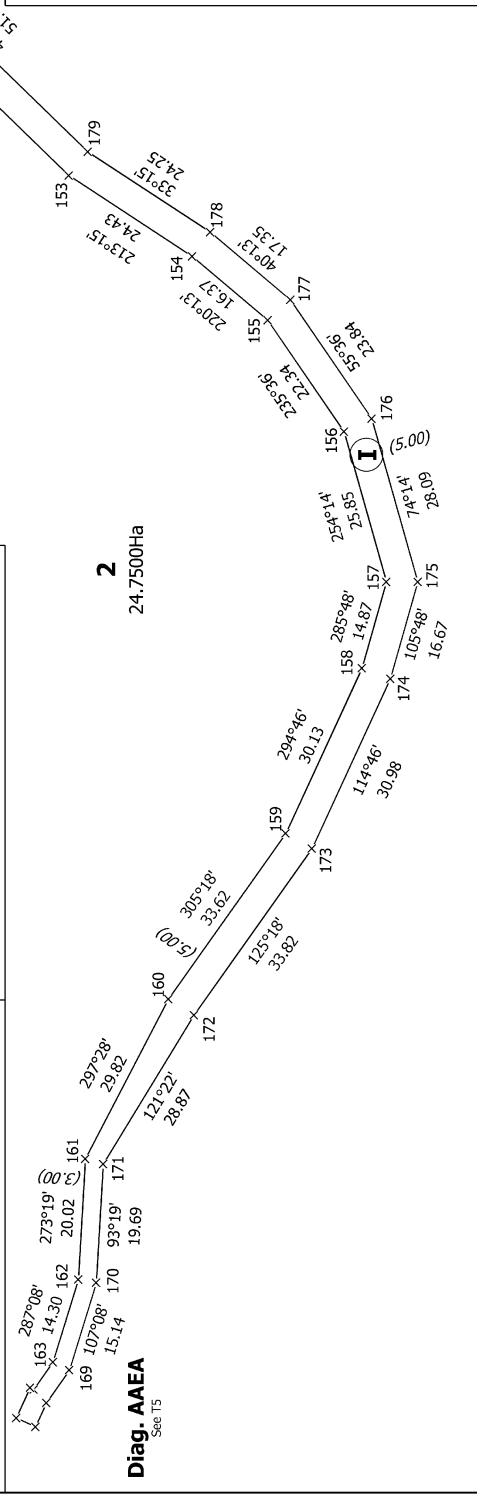
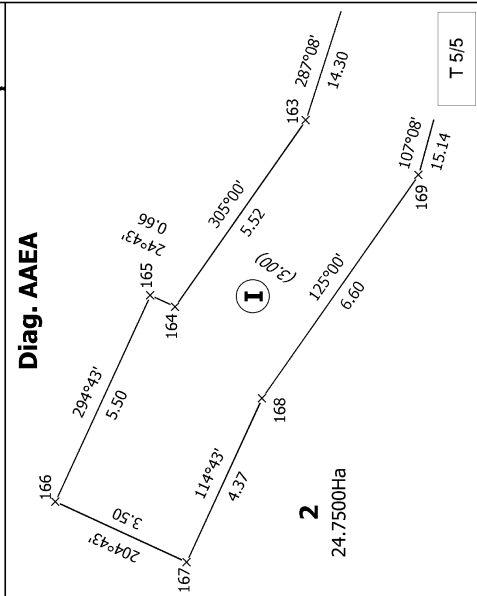
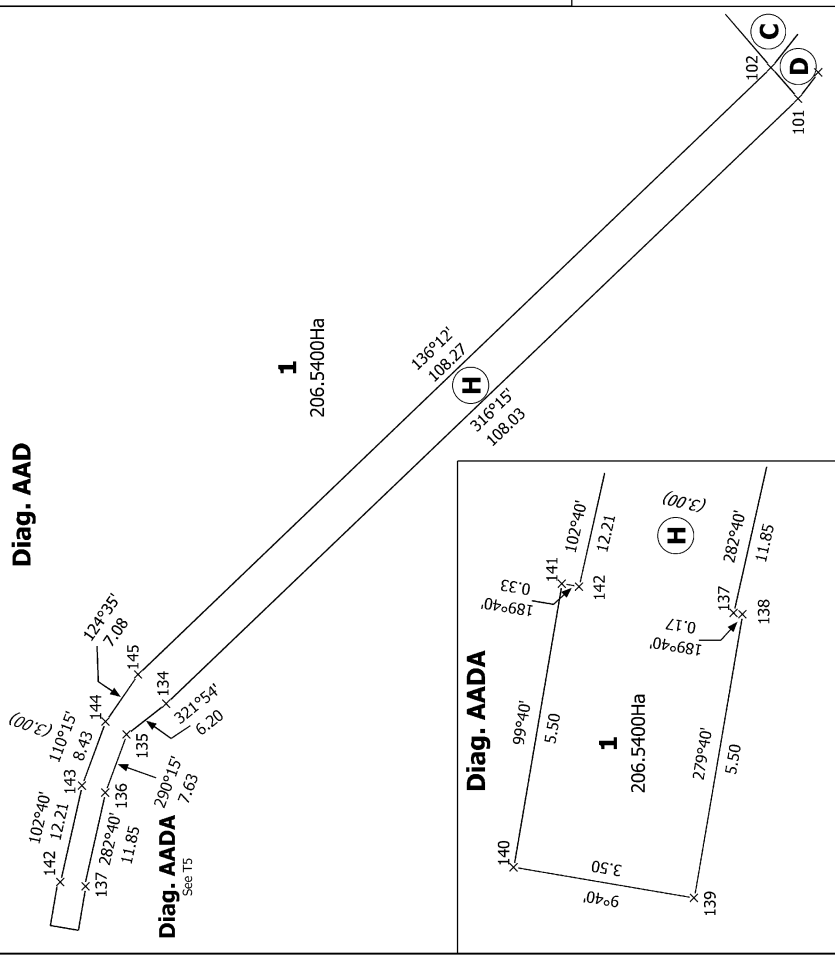
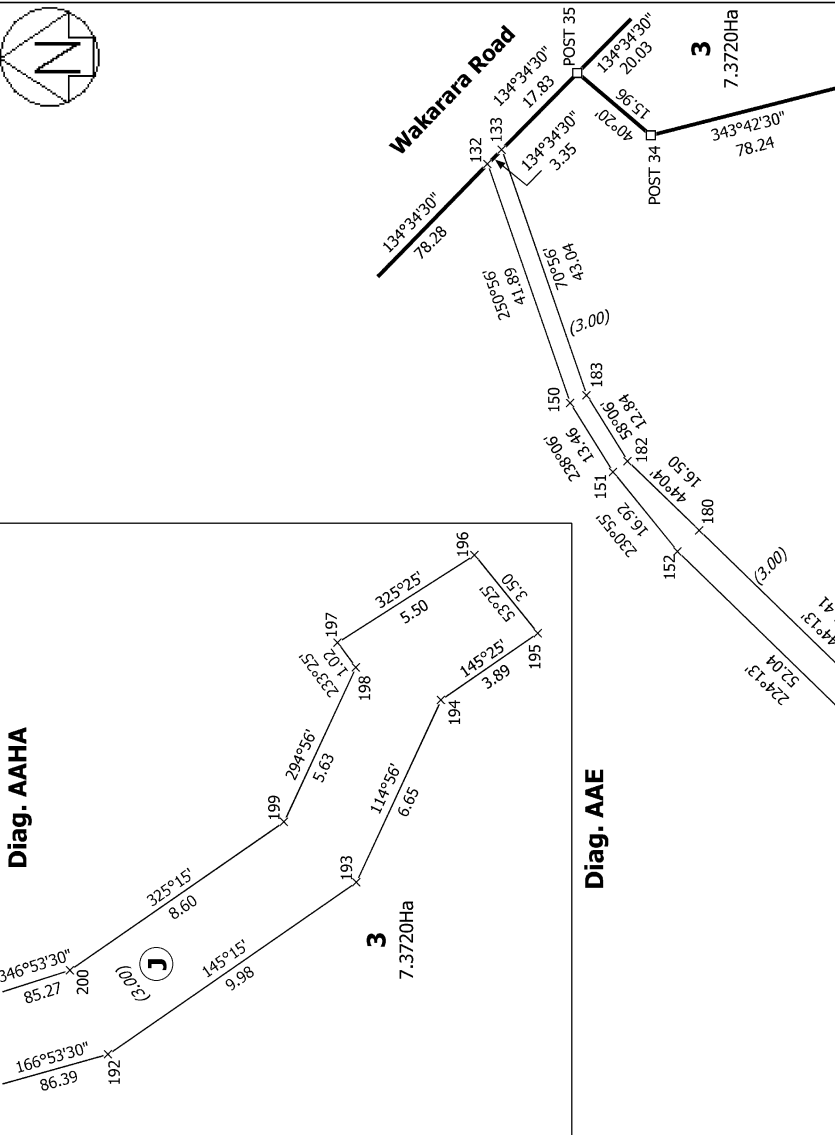
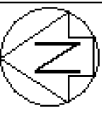
**Diag. AAB**



**Lots 1-3 being a subdivision of Lots 1 & 4 DP 21951**

Surveyor: Nicholas Roger Hope Wakefield  
 Firm: The Surveying Company (Hastings)  
 Date of Survey: 29/11/2022

**Record of Survey**  
 DP 585288  
 Deposited on: 24/03/2023



<p>Land District: Hawkes Bay</p>	<p>Lots 1-3 being a subdivision of Lots 1 &amp; 4 DP 21951</p>	<p>Record of Survey DP 585288</p>
<p>Digitally Generated Plan</p>	<p>Surveyor: Nicholas Roger Hope Wakefield Firm: The Surveying Company (Hastings) Date of Survey: 29/11/2022</p>	<p>Deposited on: 24/03/2023</p>