

Record of Survey - DP 585285

Survey Number DP 585285
Surveyor Reference 21203 - 30 Carole Crescent, Pakuranga
Surveyor James Thomas Winter
Survey Firm KW Consultants Limited
Surveyor Declaration I James Thomas Winter, being a licensed cadastral surveyor, certify that--
 (a) this dataset provided by me and its related survey are accurate, correct and in accordance with the Cadastral Survey Act 2002 and Cadastral Survey Rules 2021; and
 (b) the survey was undertaken by me or under my personal direction.
 Declared on 12 Sep 2023 11:14 AM

Survey Details

Dataset Description Lots 1-6 and Height-limited Lots 7-9 being a subdivision of Lot 65 DP 54478
Purpose LT Subdivision
Status Deposited **Type** Survey
Land District North Auckland **Survey Class** Class A
Meridional Circuit Mount Eden 2000 **Vertical Datum** Auckland 1946

Survey Dates

Surveyed Date 08/02/2022 **Certified Date** 12/09/2023
Submitted Date 12/09/2023 11:14:11 **Survey Approval Date** 12/09/2023
Deposit Date 09/11/2023

Referenced Surveys

Survey Number	Land District	Bearing Correction
DP 58761	North Auckland	0°00'00"
DP 54478	North Auckland	0°00'00"
DP 52408	North Auckland	0°00'00"

Territorial Authorities

Auckland Council

Comprised In

RT NA10D/626

Created Parcels

Parcels	Parcel Intent	Area	RT Reference
Lot 1 Deposited Plan 585285	Fee Simple Title	0.0085 Ha	1103291
Lot 2 Deposited Plan 585285	Fee Simple Title	0.0058 Ha	1103292
Lot 3 Deposited Plan 585285	Fee Simple Title	0.0058 Ha	1103293
Lot 4 Deposited Plan 585285	Fee Simple Title	0.0099 Ha	1103294
Lot 5 Deposited Plan 585285	Fee Simple Title	0.0087 Ha	1103295
Lot 6 Deposited Plan 585285	Fee Simple Title	0.0074 Ha	1103296
Height-Limited Lot 7 Deposited Plan 585285	Fee Simple Title	0.0077 Ha	1103297
Height-Limited Lot 8 Deposited Plan 585285	Fee Simple Title	0.0086 Ha	1103298
Height-Limited Lot 9 Deposited Plan 585285	Fee Simple Title	0.0140 Ha	Multiple



Record of Survey - DP 585285

Created Parcels

Parcels	Parcel Intent	Area	RT Reference
Height-Limited Area A Deposited Plan 585285	Easement		
Height-Limited Area B Deposited Plan 585285	Easement		
Height-Limited Area C Deposited Plan 585285	Easement		
Area D Deposited Plan 585285	Easement		
Area E Deposited Plan 585285	Easement		
Height-Limited Area F Deposited Plan 585285	Easement		
Height-Limited Area G Deposited Plan 585285	Easement		
Height-Limited Area H Deposited Plan 585285	Easement		
Height-Limited Area I Deposited Plan 585285	Easement		
Height-Limited Area J Deposited Plan 585285	Easement		
Height-Limited Area K Deposited Plan 585285	Easement		
Height-Limited Area L Deposited Plan 585285	Easement		
Height-Limited Area M Deposited Plan 585285	Easement		
Height-Limited Area N Deposited Plan 585285	Easement		
Total Area		0.0764 Ha	

Mark and Vector

Survey Number DP 585285

Meridional Circuit Mount Eden 2000

From	To	Code	Bearing	Adpt Surv	Bearing Correction	Distance	Adpt Surv	Class
ALP 3 DP 459176	AP 3 DP 585285	ob9	105°33'50"	M		64.57 M		
AP 3 DP 585285	ALP 4 DP 459176	ob98	105°33'50"	M		113.91 M		
ALP 3 DP 459176	RM A DP 54478	ob10	119°10'00"	M		42.08 M		
RM A DP 54478	LP VA DP 58761	ob0	99°34'20"	M		99.23 M		
LP VA DP 58761	ALP 4 DP 459176	ob24	106°13'00"	M		38.87 M		
RM A DP 54478	ALP 4 DP 459176	ob1	101°27'00"	M		137.91 M		
RM A DP 54478	IS VIII DP 54478	ob2	116°47'00"	A DP 54478	0°00'00"	24.77 A DP 54478		
IS VIII DP 54478	IS X DP 51777	ob20	6°58'00"	A DP 54478	0°00'00"	32.63 A DP 54478		
IS X DP 51777	ABD 27 DP 585285	ob13	146°33'00"	A DP 54478	0°00'00"	22.04 A DP 54478		
ABD 27 DP 585285	LP VA DP 58761	ob21	108°00'00"	A DP 58761	0°00'00"	62.71 A DP 58761		
ABD 27 DP 585285	ABD 29 DP 585285	ob22	288°00'00"	A DP 54478	0°00'00"	10.91 C		Class A
ABD 29 DP 585285	PEG 30 DP 585285	ob25	288°00'00"	A DP 54478	0°00'00"	7.80 C		Class A
PEG 30 DP 585285	PEG 25 DP 585285	ob27	288°00'00"	A DP 54478	0°00'00"	7.90 C		Class A
PEG 25 DP 585285	IS X DP 51777	ob19	52°18'00"	A DP 54478	0°00'00"	16.63 A DP 54478		
ABD 27 DP 585285	ABD 31 DP 585285	ob23	18°00'00"	A DP 54478	0°00'00"	6.93 C		Class A
ABD 31 DP 585285	ABD 32 DP 585285	ob29	18°00'00"	A DP 54478	0°00'00"	4.43 C		Class A
ABD 32 DP 585285	ABD 33 DP 585285	ob30	18°00'00"	A DP 54478	0°00'00"	4.43 C		Class A
ABD 33 DP 585285	ABD 24 DP 585285	ob31	18°00'00"	A DP 54478	0°00'00"	6.81 C		Class A
ABD 24 DP 585285	IS X DP 51777	ob17	260°48'00"	A DP 54478	0°00'00"	19.38 A DP 54478		
ABD 24 DP 585285	PEG 34 DP 585285	ob18	292°59'00"	A DP 52408	0°00'00"	13.98 C		Class A
PEG 34 DP 585285	ABD 35 DP 585285	ob32	292°59'00"	A DP 52408	0°00'00"	4.80 C		Class A
ABD 35 DP 585285	ABD 22 DP 585285	ob33	292°59'00"	A DP 52408	0°00'00"	9.74 C		Class A
ABD 22 DP 585285	IS X DP 51777	ob16	153°25'00"	A DP 54478	0°00'00"	15.92 A DP 54478		
PEG 18 DP 585285	IS X DP 51777	ob15	81°42'00"	A DP 54478	0°00'00"	17.25 A DP 54478		
ABD 29 DP 585285	PEG 36 DP 585285	ob26	18°00'00"	C		2.40 C		Class A

Mark and Vector

Survey Number DP 585285

Meridional Circuit Mount Eden 2000

From	To	Code	Bearing	Adpt Surv	Bearing Correction	Distance	Adpt Surv	Class
PEG 36 DP 585285	UNMK 37 DP 585285	ob34	288°00'00"	C		0.70 C		Class A
UNMK 37 DP 585285	ABD 38 DP 585285	ob35	288°00'00"	C		1.40 C		Class A
ABD 38 DP 585285	ABD 39 DP 585285	ob36	18°00'00"	C		4.53 C		Class A
ABD 39 DP 585285	ABD 40 DP 585285	ob37	18°00'00"	C		4.43 C		Class A
ABD 40 DP 585285	ABD 41 DP 585285	ob39	18°00'00"	C		4.43 C		Class A
ABD 41 DP 585285	ABD 42 DP 585285	ob41	18°00'00"	C		5.03 C		Class A
ABD 42 DP 585285	ABD 43 DP 585285	ob43	333°00'00"	C		1.27 C		Class A
ABD 43 DP 585285	PEG 34 DP 585285	ob44	17°33'00"	C		2.09 C		Class A
PEG 30 DP 585285	UNMK 55 DP 585285	ob28	18°00'00"	C		6.43 C		Class A
UNMK 55 DP 585285	PEG 44 DP 585285	ob66	18°00'00"	C		0.30 C		Class A
PEG 44 DP 585285	UNMK 56 DP 585285	ob45	18°00'00"	C		0.30 C		Class A
UNMK 56 DP 585285	ABD 45 DP 585285	ob67	18°00'00"	C		4.98 C		Class A
ABD 45 DP 585285	UNMK 59 DP 585285	ob47	18°00'00"	C		5.18 C		Class A
UNMK 59 DP 585285	ABD 48 DP 585285	ob68	18°00'00"	C		0.30 C		Class A
ABD 48 DP 585285	UNMK 60 DP 585285	ob51	18°00'00"	C		0.30 C		Class A
UNMK 60 DP 585285	ABD 35 DP 585285	ob69	18°00'00"	C		6.44 C		Class A
ABD 39 DP 585285	UNMK 52 DP 585285	ob38	108°00'00"	C		1.40 C		Class A
UNMK 52 DP 585285	UNMK 76 DP 585285	ob53	108°00'00"	C		8.71 C		Class A
UNMK 76 DP 585285	ABD 31 DP 585285	ob87	108°00'00"	C		2.90 C		Class A
ABD 40 DP 585285	UNMK 53 DP 585285	ob40	108°00'00"	C		1.40 C		Class A
UNMK 53 DP 585285	UNMK 75 DP 585285	ob56	108°00'00"	C		8.71 C		Class A
UNMK 75 DP 585285	ABD 32 DP 585285	ob86	108°00'00"	C		2.90 C		Class A
ABD 41 DP 585285	UNMK 46 DP 585285	ob42	108°00'00"	C		1.40 C		Class A
UNMK 74 DP 585285	ABD 33 DP 585285	ob85	108°00'00"	C		2.90 C		Class A

Mark and Vector

Survey Number DP 585285

Meridional Circuit Mount Eden 2000

From	To	Code	Bearing	Adpt Surv	Bearing Correction	Distance	Adpt Surv	Class
ABD 48 DP 585285	UNMK 72 DP 585285	ob52	288°00'00"	C		8.94 C		Class A
UNMK 72 DP 585285	ABD 23 DP 585285	ob79	288°00'00"	C		3.55 C		Class A
ABD 45 DP 585285	ABD 57 DP 585285	ob48	288°00'00"	C		13.59 C		Class A
PEG 44 DP 585285	UNMK 73 DP 585285	ob46	288°00'00"	C		10.44 C		Class A
UNMK 73 DP 585285	PEG 58 DP 585285	ob82	288°00'00"	C		3.55 C		Class A
UNMK 53 DP 585285	UNMK 69 DP 585285	ob57	198°00'00"	C		0.30 C		Class A
UNMK 70 DP 585285	UNMK 52 DP 585285	ob75	198°00'00"	C		0.30 C		Class A
UNMK 52 DP 585285	UNMK 71 DP 585285	ob54	198°00'00"	C		0.30 C		Class A
UNMK 71 DP 585285	UNMK 37 DP 585285	ob77	198°00'00"	C		4.23 C		Class A
UNMK 72 DP 585285	UNMK 77 DP 585285	ob80	18°00'00"	C		0.30 C		Class A
UNMK 77 DP 585285	UNMK 60 DP 585285	ob88	108°00'00"	C		8.94 C		Class A
UNMK 72 DP 585285	UNMK 78 DP 585285	ob81	198°00'00"	C		0.30 C		Class A
UNMK 78 DP 585285	UNMK 59 DP 585285	ob89	108°00'00"	C		8.94 C		Class A
UNMK 73 DP 585285	UNMK 79 DP 585285	ob83	18°00'00"	C		0.30 C		Class A
UNMK 79 DP 585285	UNMK 56 DP 585285	ob90	108°00'00"	C		10.44 C		Class A
UNMK 73 DP 585285	UNMK 80 DP 585285	ob84	198°00'00"	C		0.30 C		Class A
UNMK 80 DP 585285	UNMK 55 DP 585285	ob91	108°00'00"	C		10.44 C		Class A
UNMK 67 DP 585285	UNMK 81 DP 585285	ob72	108°00'00"	C		8.71 C		Class A
UNMK 81 DP 585285	UNMK 74 DP 585285	ob92	198°00'00"	C		0.30 C		Class A
UNMK 61 DP 585285	UNMK 82 DP 585285	ob71	108°00'00"	C		8.71 C		Class A
UNMK 82 DP 585285	UNMK 74 DP 585285	ob93	18°00'00"	C		0.30 C		Class A
UNMK 54 DP 585285	UNMK 83 DP 585285	ob65	108°00'00"	C		8.71 C		Class A
UNMK 83 DP 585285	UNMK 75 DP 585285	ob94	198°00'00"	C		0.30 C		Class A
UNMK 69 DP 585285	UNMK 84 DP 585285	ob74	108°00'00"	C		8.71 C		Class A

Mark and Vector

Survey Number DP 585285

Meridional Circuit Mount Eden 2000

From	To	Code	Bearing	Adpt Surv	Bearing Correction	Distance	Adpt Surv	Class
UNMK 84 DP 585285	UNMK 75 DP 585285	ob95	18°00'00"	C		0.30 C		Class A
UNMK 70 DP 585285	UNMK 85 DP 585285	ob76	108°00'00"	C		8.71 C		Class A
UNMK 85 DP 585285	UNMK 76 DP 585285	ob96	198°00'00"	C		0.30 C		Class A
UNMK 71 DP 585285	UNMK 86 DP 585285	ob78	108°00'00"	C		8.71 C		Class A
UNMK 86 DP 585285	UNMK 76 DP 585285	ob97	18°00'00"	C		0.30 C		Class A
RM A DP 54478	ABD 29 DP 585285	ob3	77°25'00"	M		28.54 M		
RM A DP 54478	PEG 30 DP 585285	ob4	67°07'00"	M		22.18 M		
RM A DP 54478	PEG 25 DP 585285	ob5	49°25'00"	M		17.01 M		
RM A DP 54478	PEG 18 DP 585285	ob6	25°41'00"	M		20.80 M		
RM A DP 54478	PEG 58 DP 585285	ob7	25°28'00"	M		21.43 M		
AP 3 DP 585285	ABD 48 DP 585285	ob99	1°01'00"	M		22.07 M		
AP 3 DP 585285	ABD 45 DP 585285	ob100	355°35'00"	M		16.91 M		
AP 3 DP 585285	PEG 44 DP 585285	ob101	346°04'00"	M		12.20 M		
AP 3 DP 585285	PEG 36 DP 585285	ob102	30°36'00"	M		6.17 M		
AP 3 DP 585285	ABD 38 DP 585285	ob103	10°52'00"	M		6.07 M		
AP 3 DP 585285	ABD 39 DP 585285	ob104	13°55'00"	M		10.58 M		
AP 3 DP 585285	ABD 40 DP 585285	ob105	15°07'00"	M		15.00 M		
AP 3 DP 585285	ABD 41 DP 585285	ob106	15°47'00"	M		19.43 M		
AP 3 DP 585285	ABD 42 DP 585285	ob107	16°14'00"	M		24.46 M		
AP 3 DP 585285	ABD 43 DP 585285	ob108	14°16'00"	M		25.40 M		
UNMK 46 DP 585285	UNMK 74 DP 585285	ob49	108°00'00"	C		8.71 C		Class A
UNMK 46 DP 585285	UNMK 67 DP 585285	ob50	18°00'00"	C		0.30 C		Class A
UNMK 61 DP 585285	UNMK 46 DP 585285	ob70	18°00'00"	C		0.30 C		Class A
UNMK 54 DP 585285	UNMK 61 DP 585285	ob64	18°00'00"	C		3.83 C		Class A

Mark and Vector

Survey Number DP 585285

Meridional Circuit Mount Eden 2000

From	To	Code	Bearing	Adpt Surv	Bearing Correction	Distance	Adpt Surv	Class
UNMK 53 DP 585285	UNMK 54 DP 585285	ob55	18°00'00"	C		0.30 C		Class A
UNMK 69 DP 585285	UNMK 70 DP 585285	ob73	198°00'00"	C		3.83 C		Class A
ALP 3 DP 459176	LP (1) DP 52408	ob11	70°41'30"	M		168.43 M		
LP (1) DP 52408	ALP 4 DP 459176	ob109	172°52'00"	M		104.38 M		
ALP 3 DP 459176	AP 1 DP 585285	ob12	65°39'00"	M		49.75 M		
AP 1 DP 585285	LP (1) DP 52408	ob58	72°48'00"	M		118.95 M		
RM A DP 54478	AP 2 DP 585285	ob8	111°16'00"	M		37.53 M		
AP 2 DP 585285	ALP 4 DP 459176	ob110	97°49'30"	M		101.13 M		
AP 2 DP 585285	LP VA DP 58761	ob111	92°38'30"	M		62.93 M		
IS X DP 51777	PEG (1) DP 52408	ob14	25°16'00"	A DP 52408	0°00'00"	28.86 A DP 52408		
PEG (1) DP 52408	PEG (14) DP 52408	ob117	73°30'00"	A DP 52408	0°00'00"	88.53 A DP 52408		
PEG (14) DP 52408	LP (1) DP 52408	ob118	343°30'00"	A DP 52408	0°00'00"	3.87 A DP 52408		
AP 1 DP 585285	PEG 34 DP 585285	ob59	115°18'00"	M		26.28 M		
AP 1 DP 585285	ABD 35 DP 585285	ob60	115°49'00"	M		21.49 M		
AP 1 DP 585285	ABD 22 DP 585285	ob61	118°09'00"	M		11.77 M		
AP 1 DP 585285	ABD 23 DP 585285	ob62	155°40'00"	M		13.06 M		
AP 1 DP 585285	ABD 57 DP 585285	ob63	171°02'00"	M		16.98 M		
AP 2 DP 585285	ABD 27 DP 585285	ob112	11°10'00"	M		16.78 M		
AP 2 DP 585285	ABD 31 DP 585285	ob113	13°10'00"	M		23.67 M		
AP 2 DP 585285	ABD 32 DP 585285	ob114	13°56'00"	M		28.09 M		
AP 2 DP 585285	ABD 33 DP 585285	ob115	14°29'00"	M		32.51 M		
AP 2 DP 585285	ABD 24 DP 585285	ob116	15°06'00"	M		39.30 M		

Mark and Vector

Survey Number DP 585285
Meridional Circuit Mount Eden 2000

From	To	Code	Chord Bearing	Arc Length	Radius	Adpt Surv
ABD 22 DP 585285	ABD 23 DP 585285	ob120	218°11'00"	8.09	44.10	C
ABD 23 DP 585285	ABD 57 DP 585285	ob121	209°21'00"	5.59	44.10	C
ABD 57 DP 585285	PEG 58 DP 585285	ob122	202°20'00"	5.30	44.10	C
PEG 58 DP 585285	PEG 18 DP 585285	ob123	198°11'00"	0.64	44.10	C
PEG 18 DP 585285	PEG 25 DP 585285	ob119	153°00'00"	9.57	6.10	A DP 54478

Mark Name	Mark Condition	Description
ALP 3 DP 459176		OALP flush in concrete channel.
ALP 4 DP 459176		OALP flush in concrete channel.
AP 2 DP 585285		Aluminium Plug flush in concrete footpath.
LP (1) DP 52408		OLP flush in concrete channel.
RM A DP 54478		ORM flush in concrete channel.
IS X DP 51777	Destroyed	
PEG (1) DP 52408	Destroyed	
PEG (14) DP 52408	Destroyed	

***** End of Report *****



**PLAN VIEW SHOWING HORIZONTAL EXTENTS
OF LOTS & EASEMENTS AT UPPER EXTENTS**

Lot 20
DP 52408



**N.B: REFER TO TITLE PLAN FOR
HORIZONTAL DIMENSIONS**

NOTES:
 DIAGRAMS ARE NOT TO SCALE
 BOUNDARIES ARE COINCIDENT WITH TITLE PLAN SHEETS
 UNLESS SHOWN OTHERWISE
 LEVELS ARE IN TERMS OF OFFICIAL VERTICAL DATUM:
 AUCKLAND VERTICAL DATUM 1946
 VERTICAL CONTROL MARK: RM 7268 SO 66882 (CAHW) RL: 16.32m
 SOURCE: LINZ GEODETIC DATABASE DATE: 30/06/2021



KWC
 SURVEYING &
 SUBDIVISIONS
 info@kwc.co.nz
 www.kwc.co.nz

Address:
 30 CAROLE CRESCENT
 PAKURANGA

Legal Description:
 DP 5852985

Drawing Name:
 HEIGHT LIMITED PARCELS

Revision: 0 **Date:** 23/11/2022

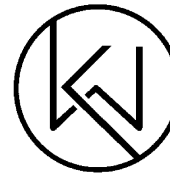
Description: **Date:**

Job Number: 21203

Drawn / Surveyed: ML

Checked:

Sheet: Scale @ A3: 1 of 1 **NITS**



Land Registration District

North Auckland

Plan Number

585285

Territorial Authority

Auckland Council

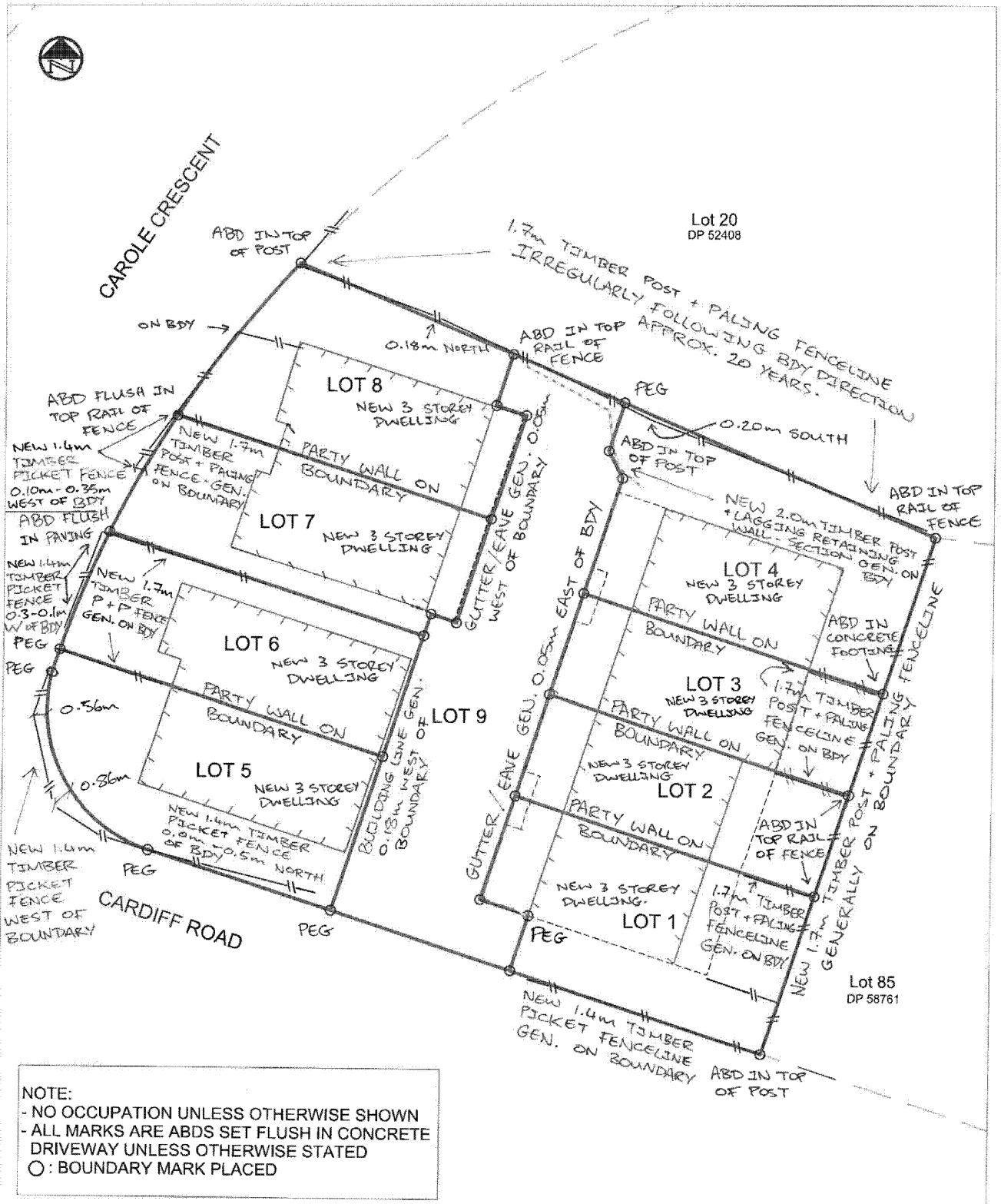
MEMORANDUM OF EASEMENTS				
PURPOSE	SHOWN	BURDENED LAND (SERVIENT TENEMENT)	BENEFITED LAND (DOMINANT TENEMENT)	UPPER HEIGHT LIMIT (AVD46)
RIGHT TO CONVEY ELECTRICITY RIGHT TO CONVEY WATER RIGHT TO CONVEY GAS RIGHT TO CONVEY TELECOMMUNICATIONS RIGHT TO DRAIN WATER RIGHT TO DRAIN SEWAGE MAINTENANCE	A	LOT 9	LOTS 1 - 8	REFER TO HEIGHT LIMITED BOUNDARY DIAGRAM
RIGHT OF WAY	A	LOT 9	LOTS 1 - 6	REFER TO HEIGHT LIMITED BOUNDARY DIAGRAM
	N	LOT 1	LOT 5 & 6	UPPER LIMIT: 20.80m
	M	LOT 2	LOT 5 & 6	UPPER LIMIT: 21.30m
	L	LOT 3	LOTS 2 & 6	UPPER LIMIT: 21.30m
PARTY WALL	B	LOT 8	LOT 7	REFER TO HEIGHT LIMITED BOUNDARY DIAGRAM
	C	LOT 7	LOT 8	
	D	LOT 6	LOT 5	
	E	LOT 5	LOT 6	
	F	LOT 4	LOT 3	
	G	LOT 3	LOT 4	
	H	LOT 3	LOT 2	
	I	LOT 2	LOT 3	

PARTY WALL	J	LOT 2	LOT 1	REFER TO HEIGHT LIMITED BOUNDARY DIAGRAM
	K	LOT 1	LOT 2	

SCHEDULE OF EASEMENTS IN GROSS			
PURPOSE	SHOWN	BURDENED LAND (SERVIENT TENEMENT)	GRANTEE
RIGHT TO CONVEY TELECOMMUNICATIONS	A	LOT 9	CHORUS NEW ZEALAND LTD

AMALGAMATION
THAT LOT 9 HEREON (LEGAL ACCESS) BE HELD AS TO SIX (6) UNDIVIDED ONE SIXTH (1/6) SHARES BY THE OWNERS OF LOTS 1 - 6 AS TENANTS IN COMMON IN THE SAID SHARES AND THAT INDIVIDUAL RECORDS OF TITLE BE ISSUED IN ACCORDANCE THEREWITH.

Occupation Diagram



Surveying + Subdivision Specialists

HELLO@KWCCONSULTANTS.CO.NZ
WWW.KWCCONSULTANTS.CO.NZ

Address:
**30 CAROLE CRESCENT
PAKURANGA**

Legal Description:
LT 585285

Drawing Name:
OCCUPATION DIAGRAM

Revision: Date:
Description: Date:

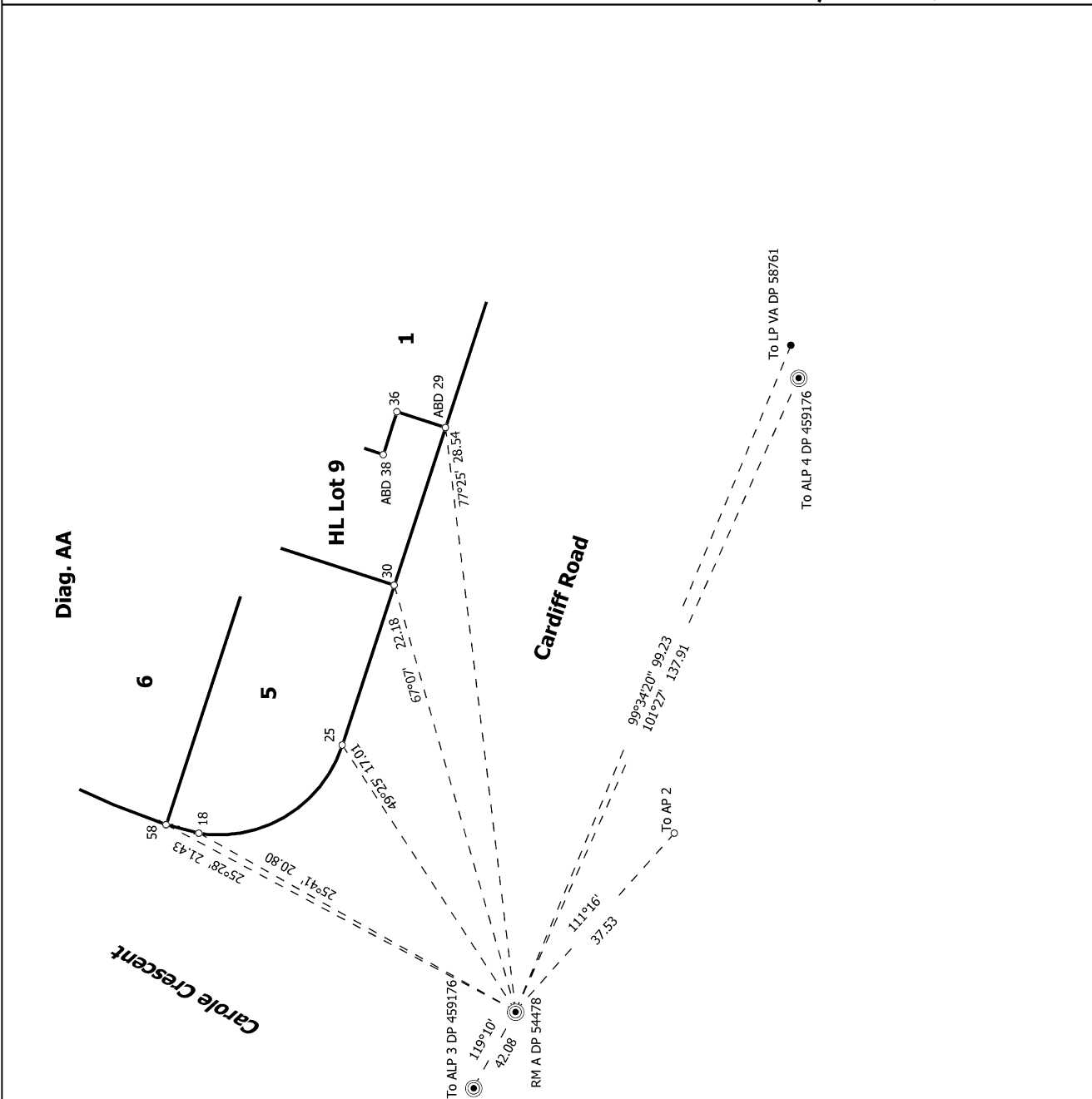
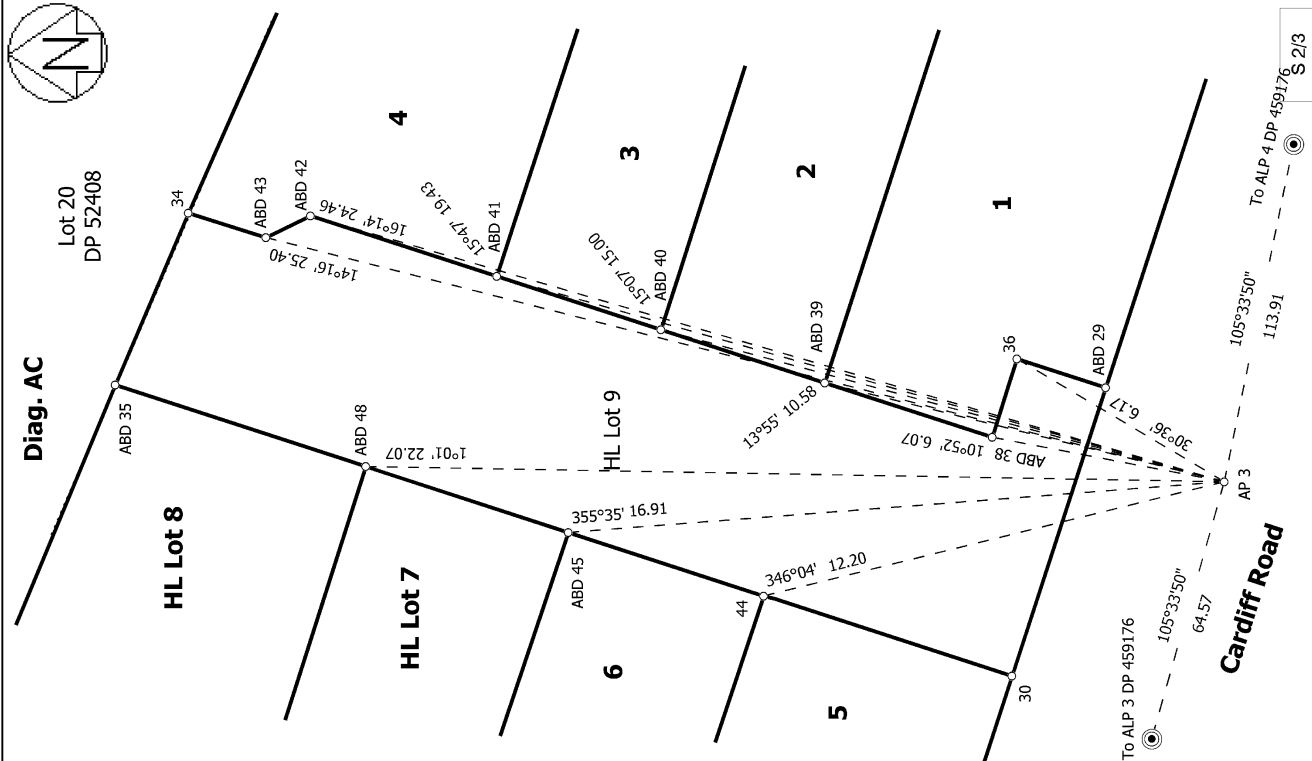
Job Number:
21203

Drawn / Surveyed: **ML**

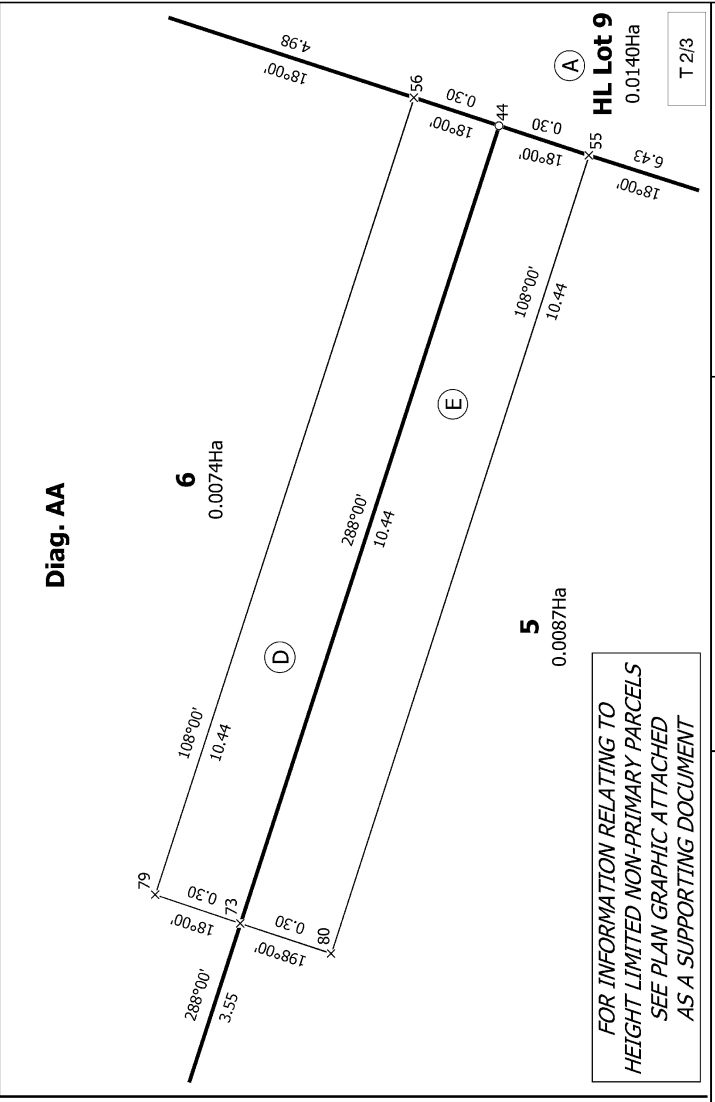
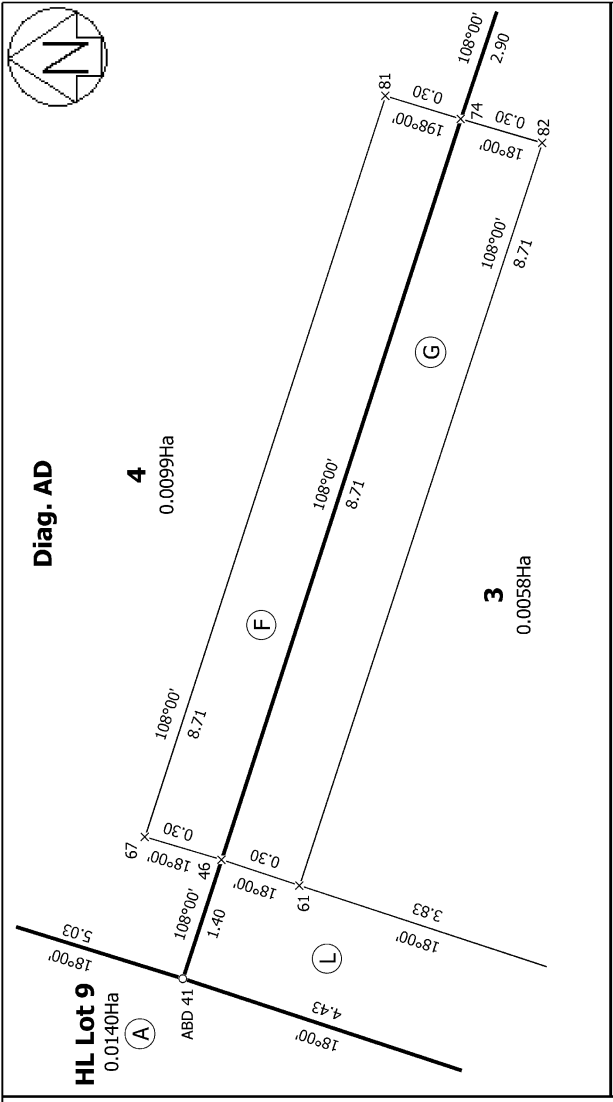
Checked:

Sheet: Scale @ A3:
1030 1:200

Plot File: D:\120 SYNERGY\data\DESKTOP\AF0B1D021203-30 Carole Crescent, Pakuranga, 2032493 Surveying\21203 WORKING\120model_PLOTTED: Thu Jul 13 09:16:40 2023

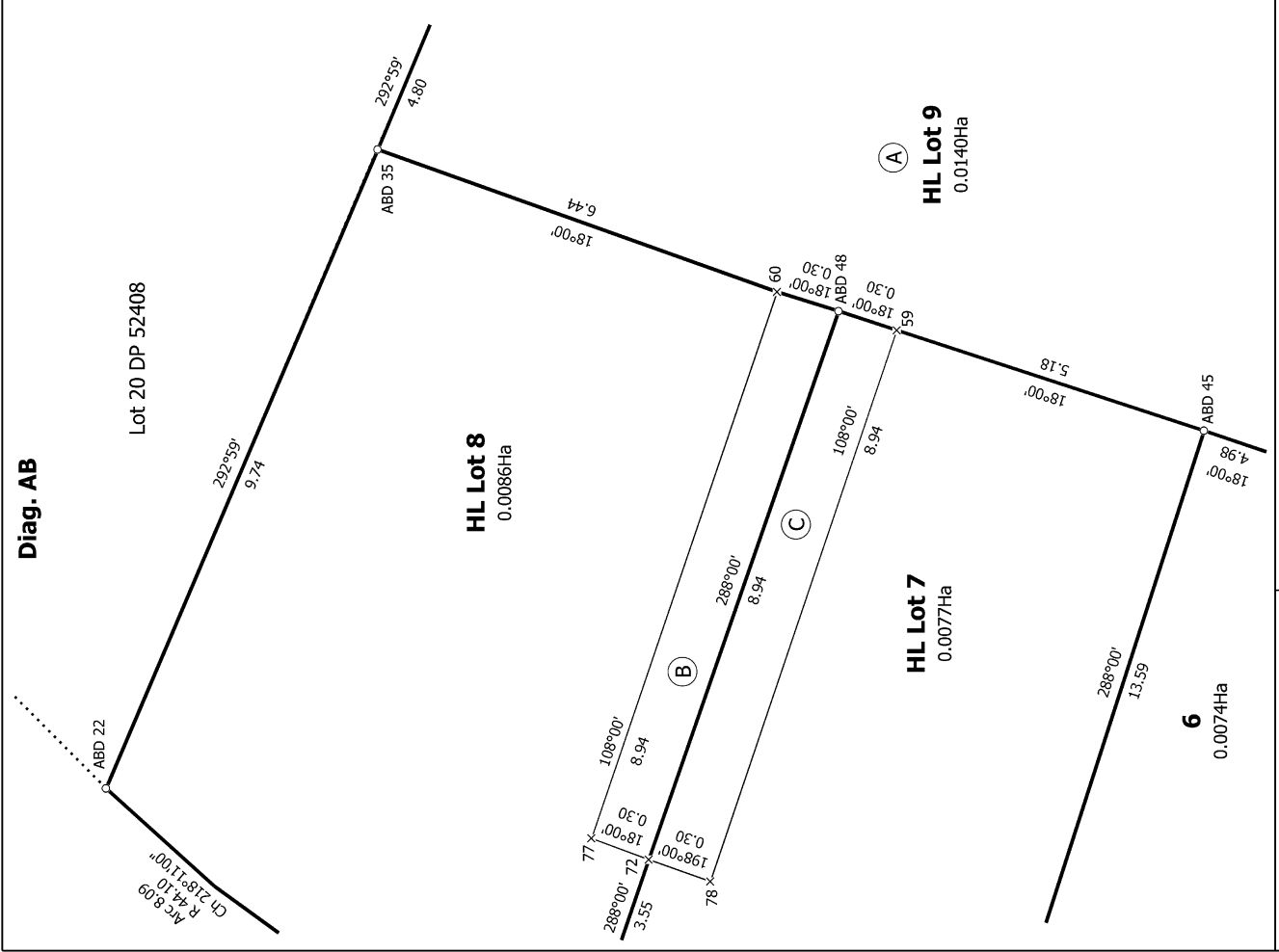


<p>Record of Survey DP 585285</p> <p>Deposited on: 9/11/2023</p>	<p>Surveyor: James Thomas Winter Firm: KW Consultants Limited Date of Survey: 8/02/2022</p>	<p>Lots 1-6 and Height-limited Lots 7-9 being a subdivision of Lot 65 DP 54478</p>	<p>Land District: North Auckland</p> <p>Digitally Generated Plan</p> <p>Generated on: 28/11/2023 12:42:00 Page 14 of 18</p>
--	---	--	--



FOR INFORMATION RELATING TO
HEIGHT LIMITED NON-PRIMARY PARCELS
SEE PLAN GRAPHIC ATTACHED
AS A SUPPORTING DOCUMENT

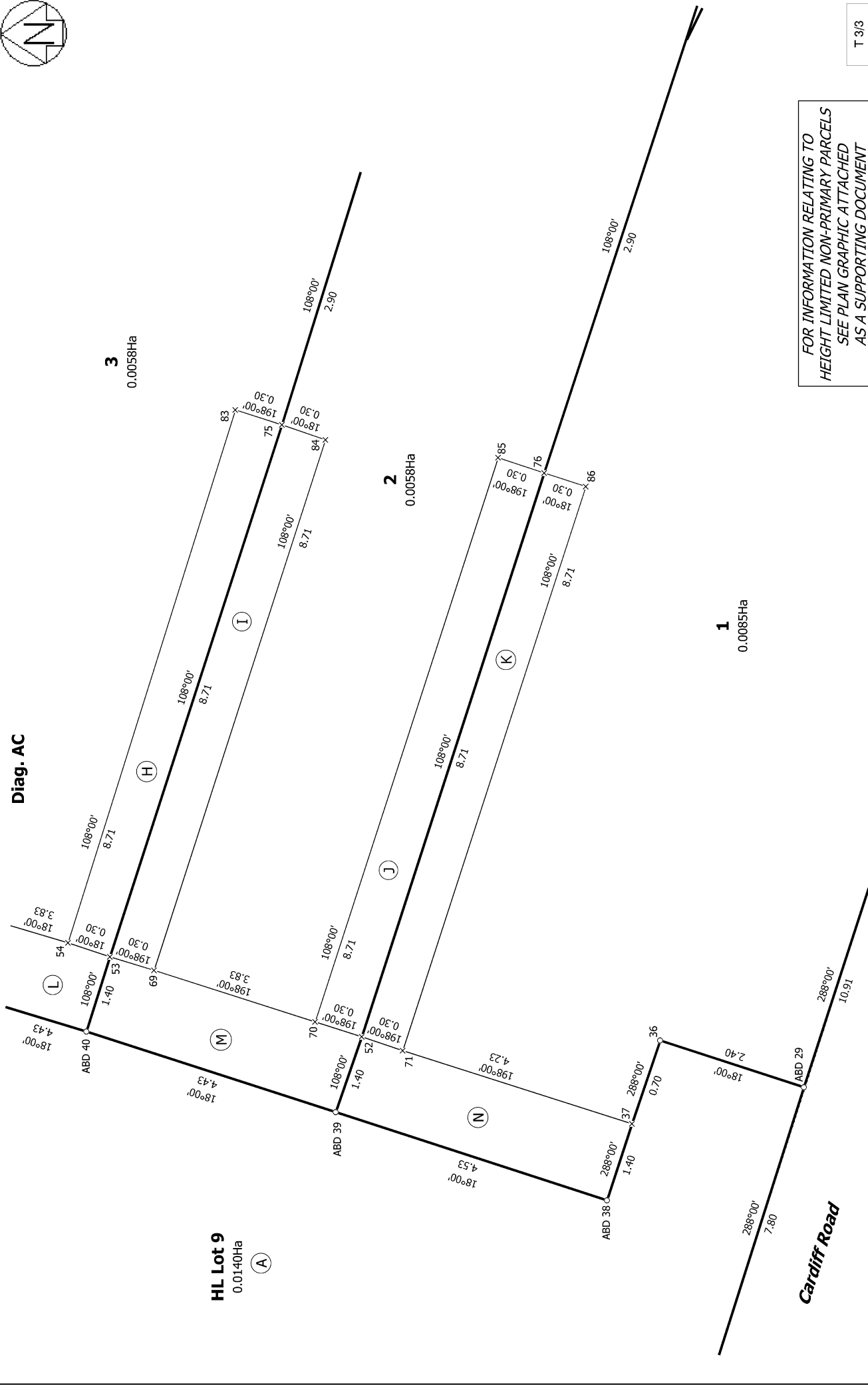
T 2/3



Land District: North Auckland	Surveyor: James Thomas Winter Firm: KW Consultants Limited Date of Survey: 8/02/2022	Record of Survey DP 585285
Digitally Generated Plan Generated on: 28/11/2023 12:42:00 PM Page 17 of 18	Lots 1-6 and Height-limited Lots 7-9 being a subdivision of Lot 65 DP 54478	
Deposited on: 9/11/2023		



Diag. AC



FOR INFORMATION RELATING TO
HEIGHT LIMITED NON-PRIMARY PARCELS
SEE PLAN GRAPHIC ATTACHED
AS A SUPPORTING DOCUMENT

T 3/3

Land District: North Auckland

Digitally Generated Plan

Generated on: 28/11/2023 12:42:00 PM Page 18 of 18

Lots 1-6 and Height-limited Lots 7-9 being a subdivision of Lot 65 DP 54478

Surveyor: James Thomas Winter

Firm: KW Consultants Limited

Date of Survey: 8/02/2022

Record of Survey

DP 585285

Deposited on: 9/11/2023